



*WEEKLY SALES SUMMARY*

Unaudited

**Week Ending: 04/18/2009**

Texas Lottery Commission  
Fiscal Year to Date Sales Comparison  
Unaudited

Through the week ending 04/18/2009 (33 weeks)

Sales by Game	FY 2007 *	FY 2008 **	FY 2009	\$ Change		% Change	
				FY 2009 to FY 2007	FY 2009 to FY 2008	FY 2009 to FY 2007	FY 2009 to FY 2008
Instant	\$ 1,818,845,084	\$ 1,803,466,861	\$ 1,763,272,624	\$ -55,572,460	\$ -40,194,237	-3.1%	-2.2%
Lotto Texas	159,212,986	132,589,528	121,354,681	-37,858,305	-11,234,847	-23.8%	-8.5%
Pick 3	200,090,558	183,637,349	183,015,666	-17,074,892	-621,683	-8.5%	-0.3%
Pick 3 Sum It Up	-	4,040,553	3,849,464	3,849,464	-191,089	-	-4.7%
Cash 5	56,140,891	48,941,199	45,488,775	-10,652,116	-3,452,424	-19.0%	-7.1%
Texas Two Step	33,306,097	28,916,145	32,664,277	-641,820	3,748,132	-1.9%	13.0%
Mega Millions	118,890,259	108,848,803	118,493,767	-396,493	9,644,964	-0.3%	8.9%
Megaplier	27,385,863	25,825,594	27,332,756	-53,107	1,507,162	-0.2%	5.8%
Daily 4	-	27,016,959	28,582,086	28,582,086	1,565,127	-	5.8%
Daily 4 Sum It Up	-	6,103,168	3,493,349	3,493,349	-2,609,819	-	-42.8%
<b>Total</b>	<b>\$ 2,413,871,738</b>	<b>\$ 2,369,386,158</b>	<b>\$ 2,327,547,444</b>	<b>\$ -86,324,294</b>	<b>\$ -41,838,714</b>	<b>-3.6%</b>	<b>-1.8%</b>

\* 3 extra days in 2007 \*\* 2 extra days in 2008

Texas Lottery Commission  
Fiscal Year Over Year Change in Sales  
Unaudited  
FY 2009 Compared to FY 2008

Week	FY 2009 Week Ending	INSTANT TICKETS				ON-LINE GAMES				TOTAL SALES			
		FY 2009	FY 2008	Difference	% change - Cumulative Sales	FY 2009	FY 2008	Difference	% change - Cumulative Sales	FY 2009	FY 2008	Difference	% change - Cumulative Sales
1	9/6/2008**	\$44,890,104	\$62,376,229	(\$17,486,125)	-28.0%	\$14,722,011	\$19,372,224	(\$4,650,213)	-24.0%	\$59,612,115	\$81,748,453	(\$22,136,338)	-27.1%
2	9/13/2008	\$46,309,551	\$52,458,866	(\$6,149,315)	-20.6%	\$13,704,860	\$16,926,163	(\$3,221,303)	-21.7%	\$60,014,411	\$69,385,029	(\$9,370,618)	-20.8%
3	9/20/2008	\$42,923,171	\$49,998,934	(\$7,075,763)	-18.6%	\$12,291,263	\$15,792,283	(\$3,501,020)	-21.8%	\$55,214,434	\$65,791,217	(\$10,576,783)	-19.4%
4	9/27/2008	\$47,042,801	\$49,894,175	(\$2,851,374)	-15.6%	\$14,222,339	\$14,800,514	(\$578,175)	-17.9%	\$61,265,140	\$64,694,689	(\$3,429,549)	-16.2%
5	10/4/2008	\$50,747,162	\$53,486,863	(\$2,739,701)	-13.5%	\$15,784,472	\$16,618,430	(\$833,958)	-15.3%	\$66,531,634	\$70,105,293	(\$3,573,659)	-14.0%
6	10/11/2008	\$49,763,789	\$50,918,020	(\$1,154,231)	-11.7%	\$15,622,498	\$15,601,410	\$21,088	-12.9%	\$65,386,287	\$66,519,430	(\$1,133,143)	-12.0%
7	10/18/2008	\$49,299,053	\$50,532,253	(\$1,233,200)	-10.5%	\$15,167,940	\$15,682,666	(\$514,726)	-11.6%	\$64,466,993	\$66,214,919	(\$1,747,926)	-10.7%
8	10/25/2008	\$49,977,581	\$50,347,450	(\$369,869)	-9.3%	\$14,525,843	\$15,586,516	(\$1,060,673)	-11.0%	\$64,503,424	\$65,933,966	(\$1,430,542)	-9.7%
9	11/1/2008	\$50,346,542	\$53,953,733	(\$3,607,191)	-9.0%	\$14,838,845	\$16,775,983	(\$1,937,139)	-11.1%	\$65,185,387	\$70,729,716	(\$5,544,330)	-9.5%
10	11/8/2008	\$54,860,087	\$53,635,090	\$1,224,997	-7.9%	\$16,057,069	\$15,912,791	\$144,278	-9.9%	\$70,917,156	\$69,547,881	\$1,369,275	-8.3%
11	11/15/2008	\$53,484,812	\$51,254,401	\$2,230,411	-6.8%	\$15,829,819	\$15,797,076	\$32,744	-9.0%	\$69,314,631	\$67,051,477	\$2,263,155	-7.3%
12	11/22/2008	\$52,806,511	\$50,897,817	\$1,908,694	-5.9%	\$16,460,748	\$15,801,720	\$659,028	-7.9%	\$69,267,259	\$66,699,537	\$2,567,722	-6.4%
13	11/29/2008	\$52,199,741	\$53,913,115	(\$1,713,374)	-5.7%	\$17,397,576	\$17,055,505	\$342,072	-7.1%	\$69,597,317	\$70,968,620	(\$1,371,303)	-6.0%
14	12/6/2008	\$56,731,851	\$55,702,697	\$1,029,154	-5.1%	\$20,363,789	\$17,900,717	\$2,463,073	-5.5%	\$77,095,640	\$73,603,414	\$3,492,227	-5.2%
15	12/13/2008	\$54,109,617	\$53,703,516	\$406,101	-4.7%	\$22,952,228	\$17,820,841	\$5,131,387	-3.0%	\$77,061,845	\$71,524,357	\$5,537,488	-4.3%
16	12/20/2008	\$55,777,328	\$57,592,769	(\$1,815,441)	-4.6%	\$15,833,517	\$17,436,233	(\$1,602,716)	-3.4%	\$71,610,845	\$75,029,002	(\$3,418,157)	-4.3%
17	12/27/2008	\$57,597,885	\$57,696,003	(\$98,118)	-4.3%	\$15,851,771	\$14,743,680	\$1,108,091	-2.9%	\$73,449,656	\$72,439,683	\$1,009,973	-4.0%
18	1/3/2009	\$57,582,115	\$57,935,952	(\$353,837)	-4.1%	\$16,900,028	\$15,704,450	\$1,195,578	-2.3%	\$74,482,143	\$73,640,402	\$841,741	-3.7%
19	1/10/2009	\$54,250,945	\$55,360,542	(\$1,109,597)	-4.0%	\$16,203,220	\$15,691,540	\$511,680	-2.0%	\$70,454,165	\$71,052,082	(\$597,917)	-3.5%
20	1/17/2009	\$51,625,339	\$54,920,166	(\$3,294,827)	-4.1%	\$15,701,605	\$16,259,669	(\$558,064)	-2.1%	\$67,326,944	\$71,179,835	(\$3,852,891)	-3.6%
21	1/24/2009	\$52,789,573	\$54,439,890	(\$1,650,317)	-4.1%	\$15,897,473	\$16,691,724	(\$794,251)	-2.2%	\$68,687,046	\$71,131,614	(\$2,444,568)	-3.6%
22	1/31/2009	\$55,453,471	\$57,464,382	(\$2,010,911)	-4.0%	\$16,908,272	\$17,968,227	(\$1,059,955)	-2.4%	\$72,361,743	\$75,432,609	(\$3,070,866)	-3.7%
23	2/7/2009	\$62,247,711	\$60,715,019	\$1,532,692	-3.7%	\$18,354,314	\$20,097,338	(\$1,743,025)	-2.7%	\$80,602,025	\$80,812,357	(\$210,333)	-3.5%
24	2/14/2009	\$60,509,056	\$57,093,143	\$3,415,913	-3.3%	\$19,218,078	\$22,179,908	(\$2,961,831)	-3.3%	\$79,727,134	\$79,273,051	\$454,083	-3.3%
25	2/21/2009	\$59,194,623	\$57,627,047	\$1,567,576	-3.0%	\$21,098,199	\$27,230,539	(\$6,132,340)	-4.5%	\$80,292,822	\$84,857,586	(\$4,564,764)	-3.4%
26	2/28/2009	\$58,857,216	\$55,591,667	\$3,265,549	-2.7%	\$24,116,924	\$17,016,118	\$7,100,806	-2.8%	\$82,974,140	\$72,607,785	\$10,366,355	-2.7%
27	3/7/2009	\$59,552,257	\$56,837,481	\$2,714,776	-2.4%	\$23,995,136	\$16,690,193	\$7,304,943	-1.1%	\$83,547,393	\$73,527,674	\$10,019,719	-2.1%
28	3/14/2009	\$53,754,084	\$54,587,112	(\$833,028)	-2.4%	\$18,769,831	\$16,448,165	\$2,321,667	-0.6%	\$72,523,915	\$71,035,277	\$1,488,639	-1.9%
29	3/21/2009	\$52,581,107	\$53,098,937	(\$517,830)	-2.3%	\$15,903,038	\$16,639,184	(\$736,146)	-0.7%	\$68,484,145	\$69,738,121	(\$1,253,976)	-1.9%
30	3/28/2009	\$52,560,961	\$53,933,689	(\$1,372,728)	-2.3%	\$16,094,933	\$17,698,625	(\$1,603,692)	-1.0%	\$68,655,894	\$71,632,314	(\$2,976,420)	-2.0%
31	4/4/2009	\$56,249,759	\$57,598,982	(\$1,349,223)	-2.3%	\$17,357,002	\$17,665,411	(\$308,409)	-1.0%	\$73,606,761	\$75,264,393	(\$1,657,632)	-2.0%
32	4/11/2009	\$54,440,987	\$53,954,185	\$486,802	-2.2%	\$17,660,600	\$15,860,784	\$1,799,816	-0.7%	\$72,101,587	\$69,814,969	\$2,286,618	-1.9%
33	4/18/2009	\$52,755,834	\$53,946,736	(\$1,190,902)	-2.2%	\$18,469,585	\$16,452,676	\$2,016,909	-0.3%	\$71,225,419	\$70,399,412	\$826,007	-1.8%
34	4/25/2009		\$51,533,006				\$16,873,949				\$68,406,955		
35	5/2/2009		\$53,250,568				\$18,202,103				\$71,452,671		
36	5/9/2009		\$54,060,849				\$18,422,562				\$72,483,411		
37	5/16/2009		\$54,010,641				\$20,728,360				\$74,739,001		
38	5/23/2009		\$50,377,032				\$15,461,384				\$65,838,416		
39	5/30/2009		\$49,545,080				\$15,175,370				\$64,720,450		
40	6/6/2009		\$53,702,986				\$15,982,166				\$69,685,152		

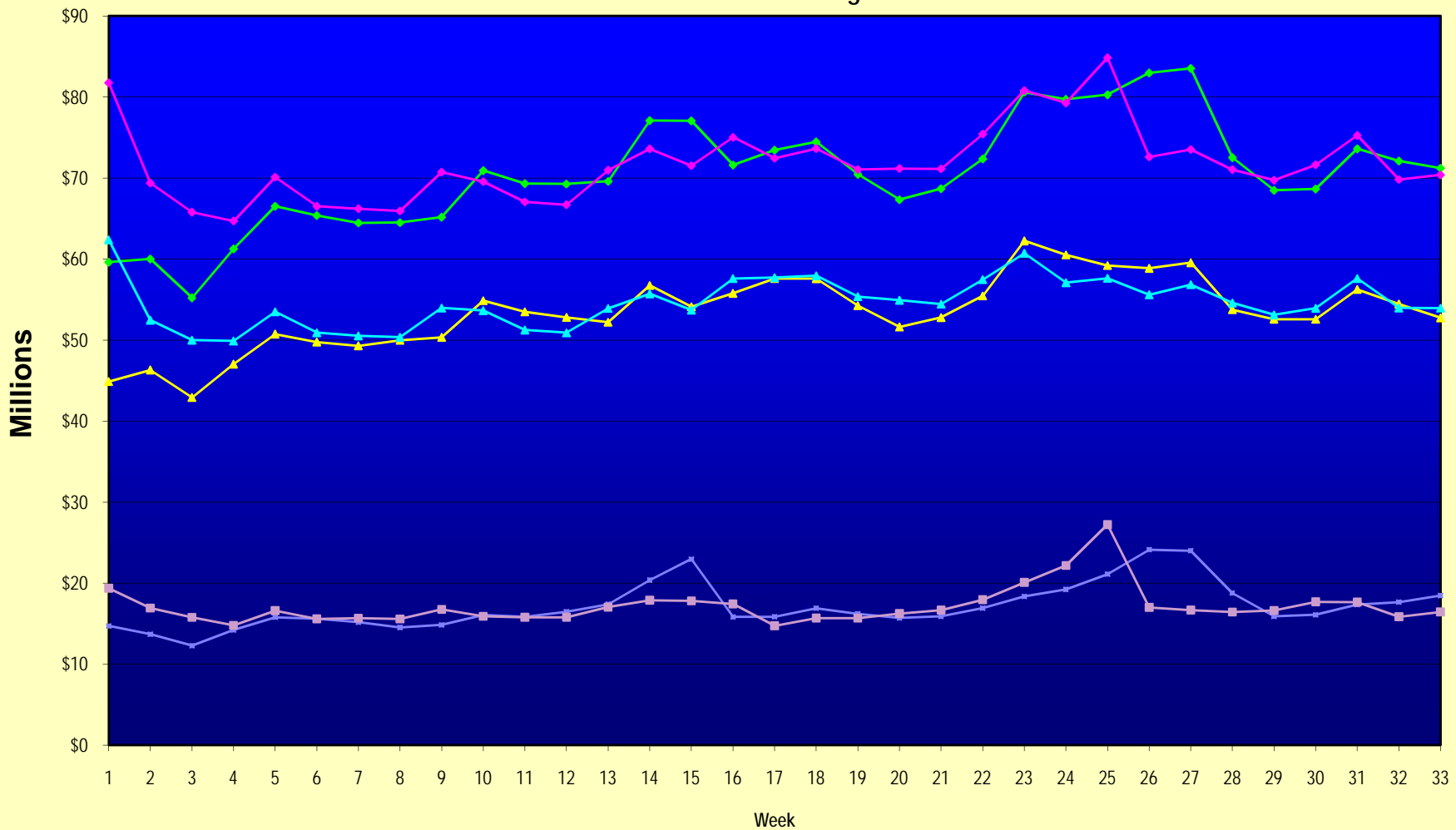
Note: Week 1 is not a full week of sales as this report is prepared on a Fiscal Year basis.

Texas Lottery Commission  
Fiscal Year Over Year Change in Sales  
Unaudited  
FY 2009 Compared to FY 2008

Week	FY 2009 Week Ending	INSTANT TICKETS				ON-LINE GAMES				TOTAL SALES			
		FY 2009	FY 2008	Difference	% change - Cumulative Sales	FY 2009	FY 2008	Difference	% change - Cumulative Sales	FY 2009	FY 2008	Difference	% change - Cumulative Sales
41	6/13/2009		\$51,171,483				\$16,589,087				\$67,760,570		
42	6/20/2009		\$50,650,362				\$15,728,484				\$66,378,846		
43	6/27/2009		\$49,258,266				\$15,250,905				\$64,509,171		
44	7/4/2009		\$53,393,355				\$16,270,619				\$69,663,974		
45	7/11/2009		\$53,127,756				\$16,914,922				\$70,042,678		
46	7/18/2009		\$51,593,146				\$17,752,738				\$69,345,884		
47	7/25/2009		\$49,902,181				\$16,706,145				\$66,608,326		
48	8/1/2009		\$49,605,420				\$16,254,383				\$65,859,803		
49	8/8/2009		\$50,961,907				\$16,770,496				\$67,732,403		
50	8/15/2009		\$49,452,511				\$16,749,487				\$66,201,998		
51	8/22/2009		\$49,249,518				\$17,286,302				\$66,535,820		
52	8/29/2009		\$49,468,928				\$18,109,997				\$67,578,925		
53	9/5/2009		\$6,054,239				\$493,109				\$6,547,348		
Total thru Current Week		\$1,763,272,624	\$1,803,466,861	(\$40,194,237)	-2.2%	\$564,274,820	\$565,919,297	(\$1,644,477)	-0.3%	\$2,327,547,444	\$2,369,386,158	(\$41,838,714)	-1.8%
Fiscal Year Total		\$1,763,272,624	\$2,783,836,095			\$564,274,820	\$887,641,858			\$2,327,547,444	\$3,671,477,953		

\*\* FY 2009 includes 6 days; FY 2008 includes 8 days  
FY 2009 average daily sales are \$9,242,258. Two days at average daily sales are \$18,484,516.

### Texas Lottery Commission Fiscal Year Over Year Change in Sales



◆ Total Sales 2009    
 ◆ Total Sales 2008    
 ▲ Instant Tickets 2009    
 ▲ Instant Tickets 2008    
 ■ On-Line Games 2009    
 ■ On-Line Games 2008

Note: Week 1 is not a full week of sales as this report is prepared on a Fiscal Year basis.

Texas Lottery Commission  
Instant Tickets by Price Point  
Sales, Prize Expense, Sales Contribution and Payout Percentage With Year Over Year Changes  
Unaudited

Fiscal Year	Price Point	# of Active Games	FY Sales	% of Instant Ticket Sales	Year over Year Change in Sales	FY Prize Expense	Year over Year Change in Prize Expense	FY Sales Contribution	Year over Year Change in Contribution	Average Prize Payout %	Year over Year Change in Payout %
2008	\$1.00	42	150,540,857	8.3%		90,502,309		60,038,548		60.1%	0.0%
thru	\$2.00	49	295,092,824	16.4%		192,039,832		103,052,992		65.1%	0.3%
4/19/2008	\$3.00	16	156,981,801	8.7%		103,164,333		53,817,468		65.7%	-0.2%
	\$5.00	43	502,320,855	27.9%		340,193,109		162,127,746		67.7%	-0.4%
	\$7.00	11	106,332,478	5.9%		72,315,746		34,016,732		68.0%	0.1%
	\$10.00	18	272,282,696	15.1%		189,297,468		82,985,228		69.5%	-1.4%
	\$20.00	8	124,455,480	6.9%		89,467,301		34,988,179		71.9%	-0.1%
	\$25.00	2	48,333,000	2.7%		35,092,851		13,240,149		72.6%	0.3%
	\$30.00	3	42,230,520	2.3%		30,568,452		11,662,068		72.4%	0.2%
	\$50.00	2	104,896,350	5.8%		75,679,963		29,216,387		72.1%	0.0%
<b>Total</b>		<b>194</b>	<b>\$1,803,466,861</b>			<b>\$1,218,321,365</b>		<b>\$585,145,496</b>		<b>67.6%</b>	<b>0.1%</b>
2009	\$1.00	41	154,299,938	8.8%		92,789,746		61,510,192		60.1%	0.1%
thru	\$2.00	38	303,849,666	17.3%		198,057,527		105,792,139		65.2%	-0.1%
4/18/2009	\$3.00	16	184,574,889	10.5%		121,195,615		63,379,274		65.7%	-0.1%
	\$5.00	41	541,266,999	30.7%		368,107,986		173,159,013		68.0%	0.1%
	\$7.00	7	87,615,367	5.0%		59,583,918		28,031,449		68.0%	0.0%
	\$10.00	18	251,151,000	14.2%		175,728,784		75,422,216		70.0%	0.0%
	\$20.00	8	156,000,160	8.9%		111,933,485		44,066,675		71.8%	0.0%
	\$25.00	1	2,372,325	0.1%		1,725,527		646,798		72.7%	0.2%
	\$30.00	3	10,024,230	0.6%		7,263,928		2,760,302		72.5%	0.1%
	\$50.00	4	72,118,050	4.0%		52,568,118		19,549,932		72.9%	1.0%
<b>Total</b>		<b>177</b>	<b>\$1,763,272,624</b>			<b>\$1,188,954,635</b>		<b>\$574,317,989</b>		<b>67.4%</b>	<b>-0.3%</b>
Variance	\$1.00	-1	3,759,081		2.5%	2,287,437	2.5%	1,471,644	2.5%	0.02%	
2009 to	\$2.00	-11	8,756,842		3.0%	6,017,695	3.1%	2,739,147	2.7%	0.10%	
2008	\$3.00	0	27,593,088		17.6%	18,031,282	17.5%	9,561,806	17.8%	-0.06%	
	\$5.00	-2	38,946,144		7.8%	27,914,878	8.2%	11,031,266	6.8%	0.28%	
	\$7.00	-4	-18,717,111		-17.6%	-12,731,829	-17.6%	-5,985,282	-17.6%	0.00%	
	\$10.00	0	-21,131,696		-7.8%	-13,568,684	-7.2%	-7,563,012	-9.1%	0.45%	
	\$20.00	0	31,544,680		25.3%	22,466,185	25.1%	9,078,496	25.9%	-0.13%	
	\$25.00	-1	-45,960,675		-95.1%	-33,367,324	-95.1%	-12,593,351	-95.1%	0.13%	
	\$30.00	0	-32,206,290		-76.3%	-23,304,524	-76.2%	-8,901,766	-76.3%	0.08%	
	\$50.00	2	-32,778,300		-31.2%	-23,111,845	-30.5%	-9,666,455	-33.1%	0.74%	
<b>Total</b>		<b>-17</b>	<b>-\$40,194,237</b>		<b>-2.2%</b>	<b>-\$29,366,729</b>	<b>-2.4%</b>	<b>-\$10,827,508</b>	<b>-1.9%</b>	<b>-0.13%</b>	

Texas Lottery Commission  
**Instant Tickets by Price Point**  
**Sales, Prize Expense, Sales Contribution and Payout Percentage With Year Over Year Changes**  
**Unaudited**

Notes - Instant Ticket Variances

		FY 2009		FY 2008		Difference
Sales	\$1 - \$7		\$1,271,606,859		\$1,211,268,815	\$60,338,044
Prize Exp.	\$1 - \$7		\$839,734,793		\$798,215,330	\$41,519,463
Sales Cont.	\$1 - \$7		\$431,872,066		\$413,053,485	\$18,818,581
Prize Exp. %	\$1 - \$7		66.0%		65.9%	0.1%
		FY 2009		FY 2008		Difference
Sales	\$10 - \$50		\$491,665,765		\$592,198,046	-\$100,532,281
Prize Exp.	\$10 - \$50		\$349,219,843		\$420,106,035	-\$70,886,192
Sales Cont.	\$10 - \$50		\$142,445,922		\$172,092,011	-\$29,646,089
Prize Exp. %	\$10 - \$50		71.0%		70.9%	0.1%
		FY 2009		FY 2008		Difference
Sales	Instant		\$1,763,272,624		\$1,803,466,861	-\$40,194,237
Prize Exp.	Instant		\$1,188,954,635		\$1,218,321,365	-\$29,366,729
Sales Cont.	Instant		\$574,317,989		\$585,145,496	-\$10,827,508
Prize Exp. %	Instant		67.4%		67.6%	-0.1%

		FY 2009		FY 2008		Difference
Sales	\$1 - \$10		\$1,522,757,859		\$1,483,551,511	\$39,206,348
Prize Exp.	\$1 - \$10		\$1,015,463,576		\$987,512,798	\$27,950,779
Sales Cont.	\$1 - \$10		\$507,294,283		\$496,038,713	\$11,255,569
Prize Exp. %	\$1 - \$10		66.7%		66.6%	0.1%
		FY 2009		FY 2008		Difference
Sales	\$20 - \$50		\$240,514,765		\$319,915,350	-\$79,400,585
Prize Exp.	\$20 - \$50		\$173,491,059		\$230,808,567	-\$57,317,508
Sales Cont.	\$20 - \$50		\$67,023,706		\$89,106,783	-\$22,083,077
Prize Exp. %	\$20 - \$50		72.1%		72.1%	0.0%
		FY 2009		FY 2008		Difference
Sales	Instant		\$1,763,272,624		\$1,803,466,861	-\$40,194,237
Prize Exp.	Instant		\$1,188,954,635		\$1,218,321,365	-\$29,366,729
Sales Cont.	Instant		\$574,317,989		\$585,145,496	-\$10,827,508
Prize Exp. %	Instant		67.4%		67.6%	-0.1%

Texas Lottery Commission  
 Weekly Sales Summary  
 & Comparison to Previous Week  
 Unaudited

	Week Ending 04/18/2009		Week Ending 04/11/2009			
	<u>THIS WEEK</u>	% of Sales	<u>LAST WEEK</u>	% of Sales	<u>\$ change</u>	<u>% change</u>
Total Sales	<u>\$71,225,419</u>		<u>\$72,101,587</u>		<u>-\$876,168</u>	-1.22%
Instant Tickets	<u>\$52,755,834</u>	74.1%	<u>\$54,440,987</u>	75.5%	<u>-\$1,685,153</u>	-3.10%
Lotto Texas	\$3,462,217	4.9%	\$3,594,176	5.0%	-\$131,959	-3.67%
Pick 3	\$5,627,572	7.9%	\$5,893,551	8.2%	-\$265,979	-4.51%
Pick 3 Sum It Up	\$117,124	0.2%	\$120,492	0.2%	-\$3,368	-2.80%
Cash 5	\$1,374,682	1.9%	\$1,394,879	1.9%	-\$20,197	-1.45%
Texas Two Step	\$829,493	1.2%	\$933,807	1.3%	-\$104,314	-11.17%
Mega Millions	\$4,960,982	7.0%	\$3,772,700	5.2%	\$1,188,282	31.50%
Megaplier	\$1,040,136	1.5%	\$857,890	1.2%	\$182,246	21.24%
Daily 4	\$957,161	1.3%	\$987,128	1.4%	-\$29,967	-3.04%
Daily 4 Sum It Up	\$100,219	0.1%	\$105,978	0.1%	-\$5,759	-5.43%
Total Online Sales	<u>\$18,469,585</u>		<u>\$17,660,600</u>		<u>\$808,986</u>	4.58%

\* Totals may not sum due to rounding.



Texas Lottery Commission  
Weekly Sales Summary  
Unaudited

INSTANT TICKETS  
TOP TEN SELLING GAMES

For the Week Ending : 04/18/2009

Rank	Price Point	Game	Sales (Millions)
1	\$ 5	SAPPHIRE BLUE 5'S	\$ 3.384
2	\$ 10	PRECIOUS JEWELS	\$ 2.969
3	\$ 50	\$140,000,000 EXTREME PAYOUT	\$ 2.956
4	\$ 5	EXTREME 8'S	\$ 2.739
5	\$ 3	BONUS CASHWORD	\$ 2.705
6	\$ 10	STACKS OF CASH	\$ 2.153
7	\$ 7	DAZZLIN' DIAMOND 7'S	\$ 2.049
8	\$ 20	SUPER SET FOR LIFE	\$ 1.709
9	\$ 5	BUST THE BANK	\$ 1.675
10	\$ 5	BONUS BREAK THE BANK	\$ 1.580

Texas Lottery Commission  
Prize Payout Tracking Report  
Unaudited

Through Week Ending 04/18/2009

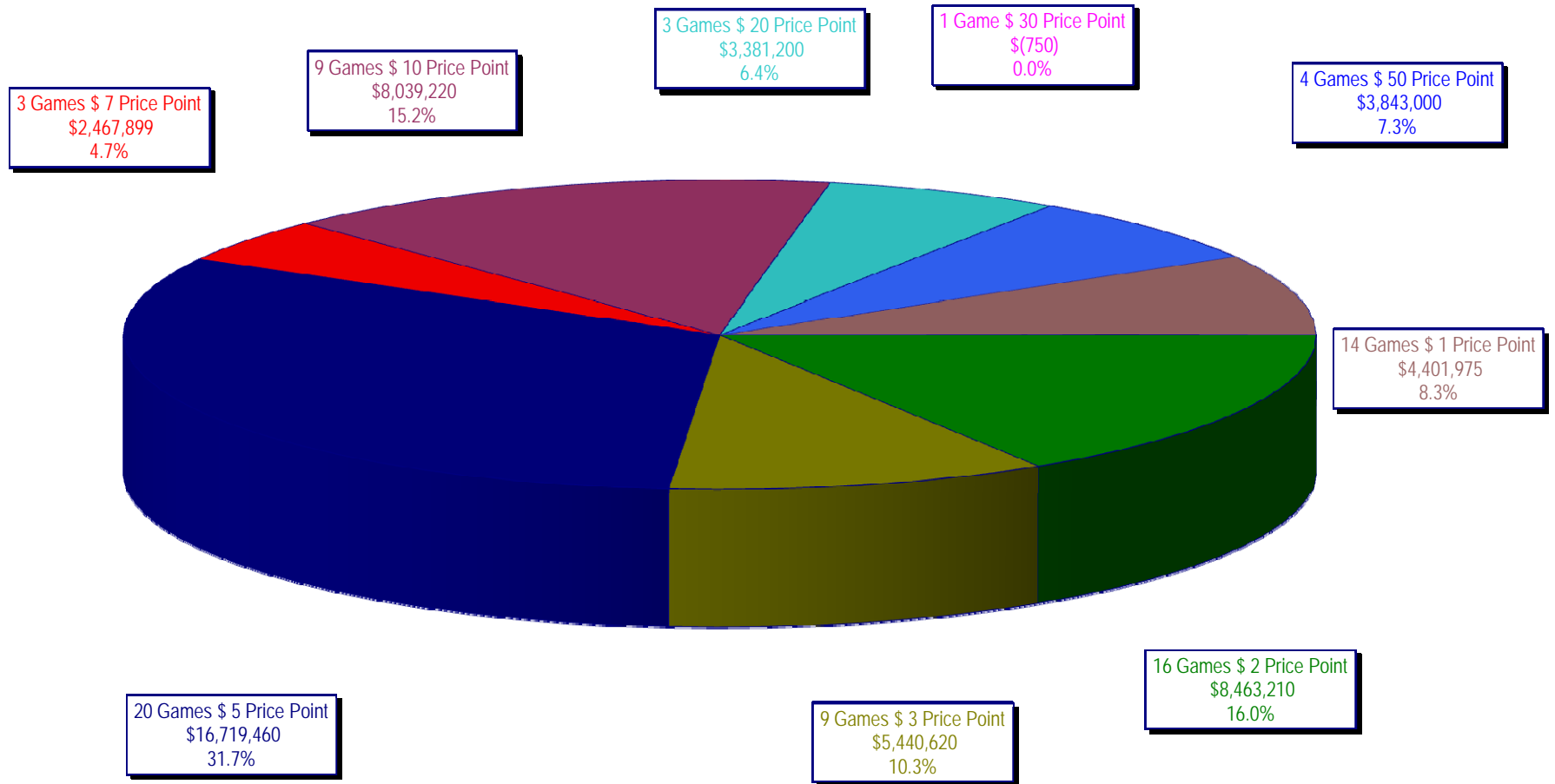
On-Line Sales

		FY Sales Through Week Ending 4/18/2009		FY Prize Expense Through Week Ending 4/18/2009	Actual* Prize Payout	Base Payout (Prize Pool)
Lotto	\$	121,354,681	\$	60,797,582	50.10%	50.00%
Pick 3		183,015,666		90,399,560	49.39%	50.00%
Pick 3 Sum It Up		3,849,464		1,748,293	45.42%	50.00%
Cash 5		45,488,775		22,848,043	50.23%	50.00%
Texas Two-Step		32,664,277		17,583,509	53.83%	50.00%
Mega Millions		118,493,767		58,027,506	48.97%	50.00%**
Megaplier		27,332,756		11,955,070	43.74%	N/A
Daily 4		28,582,086		14,057,650	49.18%	50.00%
Daily 4-Sum It Up		3,493,349		1,463,156	41.88%	50.00%
<b>Totals</b>	\$	<b>564,274,820</b>	\$	<b>278,880,369</b>	<b>49.42%</b>	

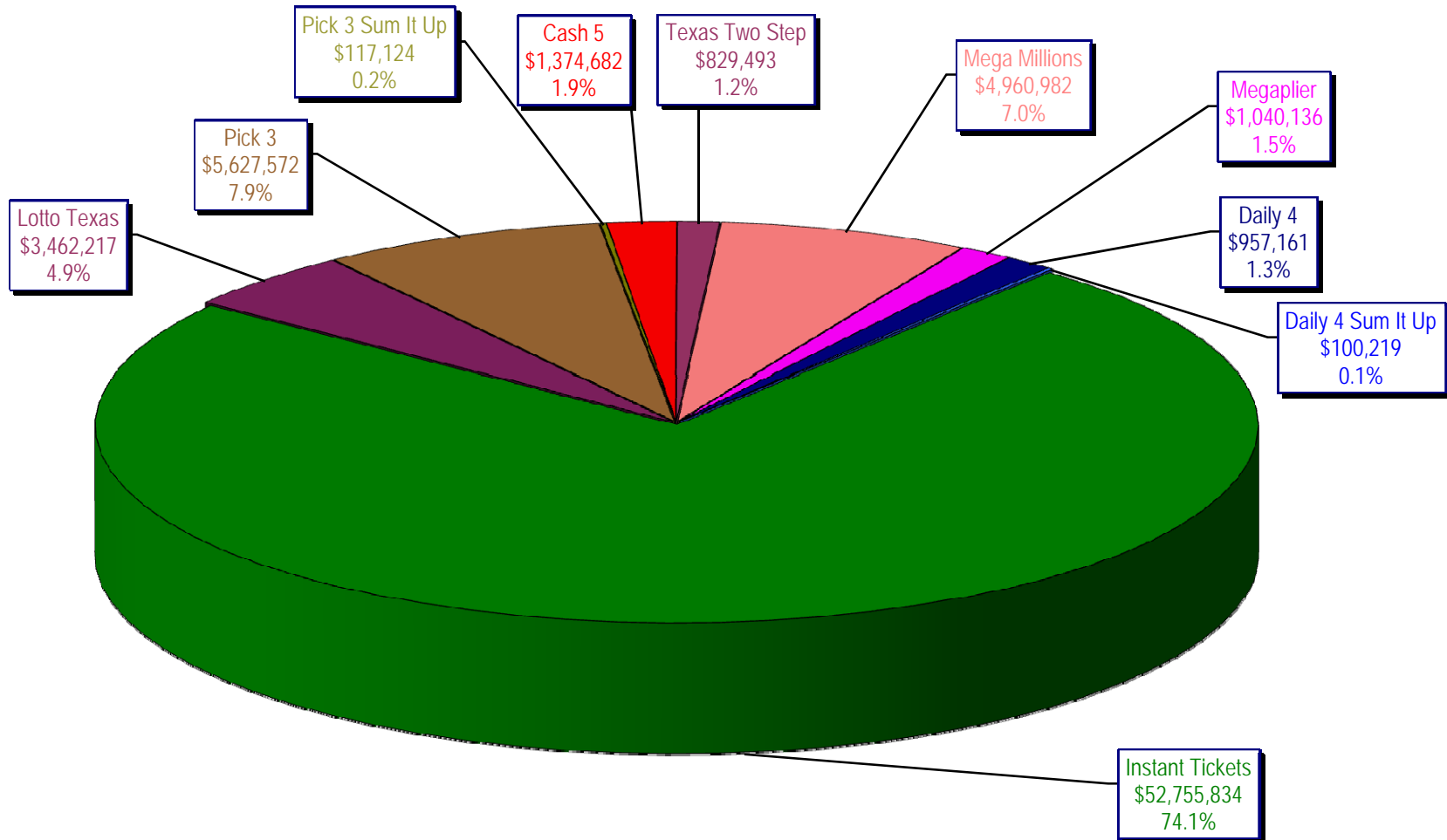
\* Before Unclaimed Prizes

\*\* Estimated; depends on # of guaranteed prizes won in Texas

Texas Lottery Commission  
Instant Ticket Sales  
For the Week Ending 04/18/2009  
(Unaudited)



Texas Lottery Commission  
**All Game Sales**  
For the Week Ending 04/18/2009  
(Unaudited)



Texas Lottery Commission - Weekly Sales Summary for FY 2009 (Unaudited)

Week Ended	Instant Games	New Games & Dates	Lotto Texas	Jackpot		Pick 3	Pick 3 Sum It Up	Cash 5	Texas Two Step	Jackpot		Mega Millions	Jackpot		Megaplier	Daily 4	Daily 4 Sum It Up	Total	Per Cap.
				W	S					M/T	TH/F		T	F					
9/6/2008	50,944,343.00	1108 (\$2,N), 1088 (\$3, N) - 9/01/08	3,378,718.00	5	6	5,436,414.00	122,123.00	1,396,622.00	890,346.00	350	450	2,445,490.00	12	16	649,090.00	786,482.50	109,834.00	66,159,462.50	2.77
9/13/2008	46,309,551.00	1109 (\$1,N), 1098 (\$5, N) - 9/08/08	3,020,089.00	7	8	4,705,585.50	105,899.00	1,279,412.00	856,199.00	600	200	2,327,214.00	24	12	617,672.00	696,633.00	96,156.50	60,014,411.00	2.51
9/20/2008	42,923,171.00	0	3,054,093.00	9	10	4,121,734.50	90,718.00	1,155,350.00	637,792.00	225	250	1,978,127.00	15	12	540,225.00	627,210.00	86,013.50	55,214,434.00	2.31
9/27/2008	47,042,801.00	1111 (\$2,N), 1099 (\$5, N) - 9/22/08	3,427,671.00	11	12	4,821,563.00	103,189.50	1,288,062.00	834,307.00	275	425	2,322,862.00	16	24	617,085.00	709,741.50	97,858.00	61,265,140.00	2.56
10/4/2008	50,747,162.00	1113 (\$1,N) 9/29/08	3,675,683.00	13	14	5,305,711.00	116,332.50	1,369,040.00	1,074,874.00	525	650	2,671,927.00	32	42	693,845.00	770,782.50	106,277.00	66,531,634.00	2.78
10/11/2008	49,763,789.00	0	3,732,365.00	15	16	5,287,094.00	114,665.50	1,370,334.00	1,305,250.00	800	975	2,306,070.00	12	16	622,120.00	778,204.00	106,395.00	65,386,286.50	2.74
10/18/2008	49,299,053.00	1117 (\$3,N), 1118 (\$20,N) - 10/13/08	3,780,438.00	17	18	5,149,258.00	109,530.00	1,355,601.00	741,849.00	200	200	2,500,644.00	23	32	652,198.00	776,366.00	102,056.00	64,466,993.00	2.70
10/25/2008	49,977,581.00	1119 (\$1,N), 1120 (\$5,N) - 10/20/08	3,210,762.00	4	5	5,099,671.00	107,104.50	1,339,079.00	789,649.00	225	275	2,456,965.00	42	12	641,206.00	778,434.00	102,972.50	64,503,424.00	2.70
11/1/2008	50,346,542.00	1121 (\$2,N), 1122 (\$10,N) - 10/27/08	3,325,641.00	6	7	5,234,124.00	109,983.00	1,339,046.00	946,035.00	375	475	2,347,596.00	16	23	626,235.00	805,572.00	104,612.50	65,185,386.50	2.73
11/8/2008	54,860,087.00	1123 (\$3,N), 1124 (\$7,N) - 11/03/08; 1103 (\$3,N) - 11/05/08; 1063 (\$3,N) - 11/07/08	3,290,417.00	4	5	5,686,701.00	118,495.00	1,397,985.00	1,158,101.00	625	750	2,729,302.50	31	42	692,662.00	871,230.00	112,175.50	70,917,156.00	2.97
11/15/2008	53,484,812.00	1125 (\$1, N), 1126 (\$5,N) - 11/10/08	3,336,934.00	6	7	5,459,984.00	112,884.00	1,366,024.00	766,955.00	200	225	3,102,251.00	51	62	749,736.00	830,957.00	104,094.00	69,314,631.00	2.90
11/22/2008	52,806,511.00	0	3,452,481.00	8	9	5,329,591.00	108,861.50	1,358,271.00	743,950.00	200	200	3,666,517.00	73	86	847,201.00	849,077.50	104,797.50	69,267,258.50	2.90
11/29/2008	52,199,741.00	1127 (\$2,N), 1128 (\$5,N) - 11/24/08	3,585,374.00	10	11	5,340,783.50	111,443.00	1,315,233.00	686,077.00	200	225	4,441,715.00	96	111	968,906.00	845,475.50	102,569.00	69,597,317.00	2.91
12/6/2008	56,731,851.00	0	3,794,991.00	12	13	5,752,593.00	121,663.50	1,416,446.00	780,328.00	250	200	6,238,355.00	128	146	1,270,214.00	881,841.50	107,357.00	77,095,640.00	3.23
12/13/2008	54,109,617.00	1129 (\$1, N) - 12/08/08	3,315,658.00	4	5	5,580,770.00	114,295.50	1,384,858.00	766,893.00	225	250	9,150,536.00	170	207	1,691,121.00	846,176.50	101,919.50	77,061,844.50	3.22
12/20/2008	55,777,328.00	1104 (\$2,N), 1105 (\$5,N), 1106 (\$10,N) - 12/15/08	3,432,340.00	6	7	5,741,120.00	116,075.50	1,401,805.00	741,945.00	200	200	2,736,234.00	12	16	687,875.00	871,579.50	104,543.00	71,610,845.00	3.00
12/27/2008	57,597,885.00	1077 (\$1,N), 1110 (\$1,N) - 12/22/08	3,582,169.00	8	4	5,628,081.50	115,323.00	1,340,590.00	708,906.00	225	250	2,842,167.00	22	29	706,042.00	828,346.00	100,146.00	73,449,655.50	3.07
1/3/2009	57,582,115.00	0	3,784,763.00	5	6	5,690,220.50	120,519.50	1,406,807.00	934,000.00	325	525	3,190,457.00	37	46	780,850.00	885,674.00	106,736.50	74,482,142.50	3.12
1/10/2009	54,250,945.00	1135 (\$2,N), 1136 (\$5,N) - 1/5/09	3,582,400.00	7	8	5,476,890.00	116,674.50	1,403,531.00	1,267,847.00	675	900	2,701,275.00	12	16	681,574.00	868,919.00	104,109.50	70,454,165.00	2.95
1/17/2009	51,625,339.00	1137 (\$1,N), 1138 (\$3,N) - 1/12/09	3,668,302.50	9	10	5,443,159.00	112,605.00	1,387,958.00	778,563.00	200	200	2,683,707.00	22	12	675,416.00	852,987.00	98,907.50	67,326,944.00	2.82
1/24/2009	52,789,573.00	1115 (\$2,N), 1116 (\$5,N) - 1/19/09	3,723,835.50	11	12	5,514,547.50	115,827.50	1,376,695.00	860,483.00	225	325	2,692,611.00	16	21	676,936.00	836,996.00	99,541.00	68,687,045.50	2.87
1/31/2009	55,453,471.00	1080 (\$1,N), 1024 (\$20,R) - 1/26/09; 1062 (\$5,N) - 1/28/09	3,837,299.00	13	14	5,700,714.50	121,794.50	1,403,756.00	1,070,879.00	450	600	3,002,883.00	30	40	731,253.00	925,937.50	113,755.50	72,361,743.00	3.03
2/7/2009	62,247,711.00	1035 (\$2,N), 1144 (\$5,N), 1058 (\$10, N) - 2/2/09	4,092,117.00	15	16	6,336,717.00	134,543.00	1,481,812.00	842,746.00	200	225	3,509,032.00	50	60	829,550.00	1,007,529.00	120,267.50	80,602,024.50	3.37
2/14/2009	60,509,056.00	1146 (\$7,N), 1089 (\$1,N) - 2/9/09	4,119,193.00	17	18	6,363,028.00	133,901.50	1,445,616.00	1,013,987.00	325	450	4,082,572.00	73	85	928,813.00	1,010,898.50	120,068.50	79,727,133.50	3.34
2/21/2009	59,194,623.00	1046 (\$2,N), 1140 (\$5,N) - 2/16/09	4,326,401.00	19	20	6,038,807.50	128,493.00	1,439,312.00	1,268,803.00	600	750	5,614,471.00	103	120	1,178,133.00	988,075.00	115,703.50	80,292,822.00	3.36
2/28/2009	58,857,216.00	1132 (\$10,N), 1149 (\$1,N) - 2/23/09	4,526,304.00	21	22	6,084,457.50	128,979.50	1,439,607.00	1,668,414.00	925	1,150	7,676,975.00	145	171	1,504,895.00	973,121.00	114,171.00	82,974,140.00	3.47

Texas Lottery Commission - Weekly Sales Summary for FY 2009 (Unaudited)

Week Ended	Instant Games	New Games & Dates	Lotto Texas	Jackpot		Pick 3	Pick 3 Sum It Up	Cash 5	Texas Two Step	Jackpot		Mega Millions	Jackpot		Megaplier	Daily 4	Daily 4 Sum It Up	Total	Per Cap.
				W	S					M/T	TH/F		T	F					
3/7/2009	59,552,257.00	0	4,928,440.00	23	25	6,133,789.00	128,599.00	1,487,185.00	1,984,358.00	1,350	1,600	6,898,457.00	212	12	1,349,427.00	971,644.50	113,236.00	83,547,392.50	3.50
3/14/2009	53,754,084.00	1139 (\$2.N), 1079 (\$5.N) - 3/09/09	4,752,592.00	26	28	5,850,166.00	120,684.50	1,418,127.00	2,112,571.00	1,900	2,150	2,782,204.00	16	26	698,214.00	925,615.00	109,657.50	72,523,915.00	3.03
3/21/2009	52,581,107.00	1107 (\$1.N), 1154 (\$3.N), 1057 (\$10.N) - 3/16/09; 1102 (\$2.N) - 3/19/09	3,437,818.00	4	5	5,776,041.50	117,294.00	1,399,720.00	880,620.00	200	225	2,595,785.00	12	16	653,517.00	934,185.00	108,057.50	68,484,145.00	2.87
3/28/2009	52,560,961.00	1130 (\$5.N), 1150 (\$10.N) - 3/23/09	3,486,731.00	6	7	5,633,454.50	114,269.50	1,381,550.00	901,673.00	300	200	2,845,499.00	24	34	701,971.00	925,093.50	104,691.50	68,655,894.00	2.87
4/4/2009	56,249,759.00	1151 (\$2.N), 1101 (\$50.N) - 3/30/09	3,746,083.00	8	9	5,893,043.50	122,332.00	1,429,598.00	940,614.00	225	300	3,321,274.00	43	54	794,282.00	998,042.00	111,733.50	73,606,761.00	3.08
4/11/2009	54,440,987.00	1153 (\$2.N) - 4/07/09; 1152 (\$3.N) - 4/08/09	3,594,176.00	10	4	5,893,551.00	120,491.50	1,394,879.00	933,807.00	425	200	3,772,700.00	65	78	857,890.00	987,127.50	105,977.50	72,101,586.50	3.02
4/18/2009	52,755,834.00	1145 (\$1.N), 1148 (\$5.N) - 4/13/09	3,462,217.00	5	6	5,627,572.00	117,123.50	1,374,682.00	829,493.00	225	200	4,960,982.00	92	109	1,040,136.00	957,161.00	100,218.50	71,225,419.00	2.98
weekly change	-3.10%		-3.67%			-4.51%	-2.80%	-1.45%	-11.17%			31.50%			21.24%	-3.04%	-5.43%	-1.22%	
<b>SALES</b>																			
	<b>SALES</b>		<b>SALES</b>			<b>SALES</b>	<b>SALES</b>	<b>SALES</b>	<b>SALES</b>			<b>SALES</b>			<b>SALES</b>	<b>SALES</b>	<b>SALES</b>	<b>SALES</b>	<b>% of Sales</b>
Startup to date	35,243,858,626.00		10,400,451,728.00			3,481,734,618.50	10,335,294.00	2,164,644,785.00	458,929,995.00			1,044,632,361.50			245,540,790.00	70,799,057.00	11,832,152.50	53,340,893,379.50	100.0%
Calendar Year to date	861,954,951.00		61,082,436.00			90,575,119.50	175,670.50	21,906,331.00	17,770,858.00			60,675,458.00			13,672,975.00	14,591,398.50	1,691,345.00	1,144,096,542.50	100.0%
Fiscal Year to date 2009	1,763,272,624.00		121,354,681.00			183,015,666.00	3,849,464.00	45,488,775.00	32,664,277.00			118,493,766.50			27,332,756.00	28,582,085.50	3,493,349.00	2,327,547,444.00	100.0%