



*WEEKLY SALES SUMMARY*

Unaudited

[Week Ending: 04/20/2013](#)

Texas Lottery Commission  
Fiscal Year to Date Sales Comparison  
Unaudited

Through the week ending 04/20/2013 (34 weeks)

Sales by Game	FY 2011 *	FY 2012 **	FY 2013	\$ Change		% Change	
				FY 2013 to FY 2011	FY 2013 to FY 2012	FY 2013 to FY 2011	FY 2013 to FY 2012
Instants	\$ 1,853,690,400	\$ 1,983,529,596	\$ 2,071,841,244	\$ 218,150,844	\$ 88,311,648	11.8%	4.5%
Lotto Texas	112,649,505	112,680,504	96,262,246	-16,387,259	-16,418,258	-14.5%	-14.6%
Lotto Extra	-	-	401,661	401,661	401,661	-	-
Pick 3	178,093,756	175,015,568	172,414,188	-5,679,569	-2,601,381	-3.2%	-1.5%
Pick 3 Sum It Up	3,609,117	3,627,706	3,240,406	-368,711	-387,300	-10.2%	-10.7%
Cash Five	42,010,636	42,453,758	36,063,190	-5,947,446	-6,390,568	-14.2%	-15.1%
Texas Two Step	30,603,338	42,933,612	37,680,512	7,077,174	-5,253,100	23.1%	-12.2%
Mega Millions	129,929,297	165,445,756	66,608,861	-63,320,436	-98,836,895	-48.7%	-59.7%
Megaplier	26,403,574	30,488,213	15,611,375	-10,792,199	-14,876,838	-40.9%	-48.8%
Daily 4	37,436,565	41,781,846	46,784,298	9,347,734	5,002,452	25.0%	12.0%
Daily 4 Sum It Up	2,886,630	3,061,065	3,048,882	162,253	-12,183	5.6%	-0.4%
Powerball	59,638,375	101,389,404	169,876,999	110,238,624	68,487,596	184.8%	67.5%
Power Play	14,029,289	17,666,570	17,999,057	3,969,768	332,488	28.3%	1.9%
All or Nothing	-	-	54,620,311	54,620,311	54,620,311	-	-
<b>Total</b>	<b>\$ 2,490,980,481</b>	<b>\$ 2,720,073,597</b>	<b>\$ 2,792,453,230</b>	<b>\$ 301,472,749</b>	<b>\$ 72,379,633</b>	<b>12.1%</b>	<b>2.7%</b>

\* 3 extra days

\*\* 2 extra days

Texas Lottery Commission  
 Fiscal Year to Date Cumulative Average Sales Comparison  
 Unaudited

Through the week ending 04/20/2013 (34 weeks)

Sales by Game	FY 2011	FY 2012	FY 2013
Instants	\$ 7,888,044	\$ 8,476,622	\$ 8,930,350
Lotto Texas	479,360	481,541	414,923
Lotto Extra	-	-	57,380 **
Pick 3	757,846	747,930	743,165
Pick 3 Sum It Up	15,358	15,503	13,967
Cash Five	178,769	181,426	155,445
Texas Two Step	130,227	183,477	162,416
Mega Millions	552,891	707,033	287,107
Megaplier	112,356	130,292	67,290
Daily 4	159,305	178,555	201,656
Daily 4 Sum It Up	12,284	13,081	13,142
Powerball	253,780	433,288	732,228
Power Play	59,699	75,498	77,582
All or Nothing	-	-	243,841 *
<b>Total</b>	<b>\$ 10,599,917</b>	<b>\$ 11,624,246</b>	<b>\$ 12,100,493</b>

thru 04/23/2011  
235 days

thru 04/21/2012  
234 days

thru 04/20/2013  
232 days  
\* 224 days  
\*\* 7 days

Texas Lottery Commission  
Fiscal Year Over Year Change in Sales  
Unaudited  
FY 2013 Compared to FY 2012

Week	FY 2013 Week Ending	INSTANT TICKETS				DRAW GAMES				TOTAL SALES			
		FY 2013	FY 2012	Difference	% change - Cumulative Sales	FY 2013	FY 2012	Difference	% change - Cumulative Sales	FY 2013	FY 2012	Difference	% change - Cumulative Sales
1	9/1/2012**	\$9,611,328	\$25,147,181	(\$15,535,853)	-61.8%	\$3,712,535	\$9,704,561	(\$5,992,026)	-61.7%	\$13,323,863	\$34,851,742	(\$21,527,879)	-61.8%
2	9/8/2012	\$56,941,761	\$50,591,068	\$6,350,693	12.6%	\$19,305,417	\$17,681,853	\$1,623,564	9.2%	\$76,247,178	\$68,272,921	\$7,974,257	11.7%
3	9/15/2012	\$56,302,875	\$49,835,063	\$6,467,812	13.0%	\$20,857,230	\$16,842,326	\$4,014,904	23.8%	\$77,160,105	\$66,677,389	\$10,482,716	15.7%
4	9/22/2012	\$54,974,438	\$49,777,138	\$5,197,300	10.4%	\$20,570,277	\$17,504,800	\$3,065,477	17.5%	\$75,544,715	\$67,281,938	\$8,262,777	12.3%
5	9/29/2012	\$54,606,674	\$51,040,274	\$3,566,400	7.0%	\$20,462,690	\$18,653,100	\$1,809,591	9.7%	\$75,069,364	\$69,693,374	\$5,375,991	7.7%
6	10/6/2012	\$59,223,327	\$53,715,157	\$5,508,170	10.3%	\$19,279,973	\$17,225,680	\$2,054,293	11.9%	\$78,503,300	\$70,940,837	\$7,562,463	10.7%
7	10/13/2012	\$57,075,606	\$51,942,121	\$5,133,485	9.9%	\$18,638,467	\$17,854,980	\$783,487	4.4%	\$75,714,073	\$69,797,101	\$5,916,972	8.5%
8	10/20/2012	\$56,630,134	\$52,837,769	\$3,792,365	7.2%	\$18,998,943	\$19,558,519	(\$559,577)	-2.9%	\$75,629,077	\$72,396,288	\$3,232,789	4.5%
9	10/27/2012	\$55,789,743	\$52,206,644	\$3,583,099	6.9%	\$20,130,190	\$21,504,565	(\$1,374,376)	-6.4%	\$75,919,933	\$73,711,209	\$2,208,724	3.0%
10	11/3/2012	\$58,142,777	\$56,265,310	\$1,877,467	3.3%	\$20,638,008	\$20,870,086	(\$232,079)	-1.1%	\$78,780,785	\$77,135,396	\$1,645,389	2.1%
11	11/10/2012	\$57,484,804	\$55,682,645	\$1,802,159	3.2%	\$20,862,872	\$20,862,404	\$3,000,468	16.8%	\$78,347,676	\$73,545,049	\$4,802,627	6.5%
12	11/17/2012	\$55,805,228	\$54,978,079	\$827,149	1.5%	\$21,660,705	\$17,879,985	\$3,780,721	21.1%	\$77,465,933	\$72,858,064	\$4,607,870	6.3%
13	11/24/2012	\$61,331,977	\$53,942,448	\$7,389,529	13.7%	\$27,172,853	\$16,877,145	\$10,295,708	61.0%	\$88,504,830	\$70,819,593	\$17,685,237	25.0%
14	12/1/2012	\$58,420,598	\$57,153,469	\$1,267,129	2.2%	\$62,797,943	\$18,298,636	\$44,499,307	243.2%	\$121,218,541	\$75,452,105	\$45,766,436	60.7%
15	12/8/2012	\$62,489,745	\$55,318,284	\$7,171,461	13.0%	\$19,630,155	\$19,033,326	\$596,829	3.1%	\$82,119,900	\$74,351,610	\$7,768,290	10.4%
16	12/15/2012	\$59,661,880	\$58,612,629	\$1,049,251	1.8%	\$20,064,982	\$20,045,279	\$19,704	0.1%	\$79,726,862	\$78,657,908	\$1,068,955	1.4%
17	12/22/2012	\$63,556,886	\$60,628,256	\$2,928,630	4.8%	\$19,084,653	\$22,572,986	(\$3,488,333)	-15.5%	\$82,641,539	\$83,201,242	(\$559,703)	-0.7%
18	12/29/2012	\$63,547,886	\$63,065,007	\$482,879	0.8%	\$17,359,874	\$19,948,521	(\$2,588,647)	-13.0%	\$80,907,760	\$83,013,528	(\$2,105,768)	-2.5%
19	1/5/2013	\$60,452,721	\$60,479,896	(\$27,175)	0.0%	\$18,833,047	\$17,331,888	\$1,501,159	8.7%	\$79,285,768	\$77,811,784	\$1,473,984	1.9%
20	1/12/2013	\$58,862,997	\$57,689,526	\$1,173,471	2.0%	\$18,879,167	\$17,568,732	\$1,310,435	7.5%	\$77,742,164	\$75,258,258	\$2,483,906	3.3%
21	1/19/2013	\$58,494,057	\$58,704,854	(\$210,797)	-0.4%	\$19,258,004	\$19,886,540	(\$628,537)	-3.2%	\$77,752,061	\$78,591,394	(\$839,334)	-1.1%
22	1/26/2013	\$57,871,744	\$57,611,325	\$260,419	0.5%	\$20,093,215	\$20,641,697	(\$548,483)	-2.7%	\$77,964,959	\$78,253,022	(\$288,064)	-0.4%
23	2/2/2013	\$61,846,715	\$65,553,366	(\$3,706,651)	-5.7%	\$21,032,335	\$23,689,855	(\$2,657,521)	-11.2%	\$82,879,050	\$89,243,221	(\$6,364,172)	-7.1%
24	2/9/2013	\$70,374,906	\$75,070,485	(\$4,695,579)	-6.3%	\$21,183,638	\$28,361,583	(\$7,177,945)	-25.3%	\$91,558,544	\$103,432,068	(\$11,873,524)	-11.5%
25	2/16/2013	\$71,002,438	\$66,679,947	\$4,322,491	6.5%	\$19,295,197	\$19,588,615	(\$293,418)	-1.5%	\$90,297,635	\$86,268,562	\$4,029,073	4.7%
26	2/23/2013	\$71,203,934	\$64,868,899	\$6,335,035	9.8%	\$19,729,989	\$19,965,388	(\$235,399)	-1.2%	\$90,933,923	\$84,834,287	\$6,099,636	7.2%
27	3/2/2013	\$74,551,567	\$67,135,065	\$7,416,502	11.0%	\$20,278,327	\$20,947,181	(\$668,854)	-3.2%	\$94,829,894	\$88,082,246	\$6,747,648	7.7%
28	3/9/2013	\$75,360,138	\$68,299,006	\$7,061,132	10.3%	\$21,447,763	\$22,152,639	(\$704,876)	-3.2%	\$96,807,901	\$90,451,645	\$6,356,256	7.0%
29	3/16/2013	\$70,065,528	\$65,013,692	\$5,051,836	7.8%	\$22,055,563	\$23,351,718	(\$1,296,155)	-5.6%	\$92,121,091	\$88,365,410	\$3,755,682	4.3%
30	3/23/2013	\$70,137,284	\$64,035,255	\$6,102,029	9.5%	\$28,709,024	\$27,416,609	\$1,292,415	4.7%	\$98,846,308	\$91,451,864	\$7,394,444	8.1%
31	3/30/2013	\$68,758,522	\$65,135,991	\$3,622,531	5.6%	\$18,597,091	\$84,628,987	(\$66,031,896)	-78.0%	\$87,355,613	\$149,764,978	(\$62,409,365)	-41.7%
32	4/6/2013	\$73,270,054	\$66,860,957	\$6,409,097	9.6%	\$20,048,992	\$19,899,400	\$149,592	0.8%	\$93,319,046	\$86,760,357	\$6,558,689	7.6%
33	4/13/2013	\$64,738,900	\$64,028,898	\$710,002	1.1%	\$19,697,793	\$20,220,141	(\$522,349)	-2.6%	\$84,436,693	\$84,249,039	\$187,654	0.2%
34	4/20/2013	\$63,252,072	\$63,623,892	(\$371,820)	-0.6%	\$20,245,083	\$20,974,282	(\$729,199)	-3.5%	\$83,497,155	\$84,598,174	(\$1,101,019)	-1.3%
35	4/27/2013		\$61,743,623				\$20,267,388				\$82,011,011		
36	5/4/2013		\$64,851,962				\$20,642,982				\$85,494,944		
37	5/11/2013		\$65,472,556				\$19,140,768				\$84,613,324		
38	5/18/2013		\$60,572,658				\$18,342,814				\$78,915,472		
39	5/25/2013		\$58,959,028				\$18,618,060				\$77,577,088		
40	6/1/2013		\$57,409,086				\$19,014,645				\$76,423,731		
41	6/8/2013		\$59,845,545				\$20,527,958				\$80,373,503		
42	6/15/2013		\$57,021,498				\$19,386,186				\$76,407,684		

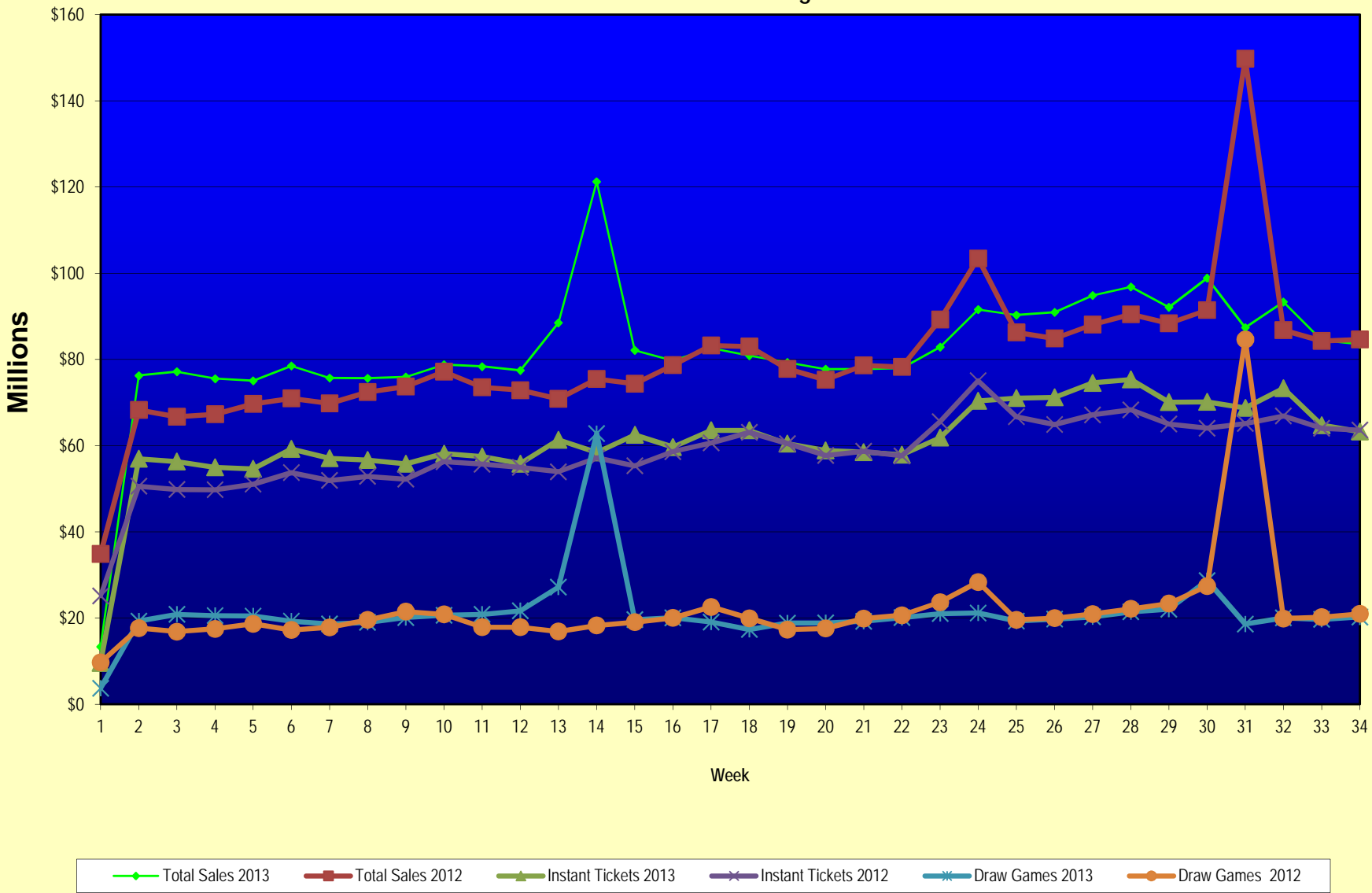
Note: Week 1 is not a full week of sales as this report is prepared on a Fiscal Year basis.

Texas Lottery Commission  
Fiscal Year Over Year Change in Sales  
Unaudited  
FY 2013 Compared to FY 2012

Week	FY 2013 Week Ending	INSTANT TICKETS				DRAW GAMES				TOTAL SALES			
		FY 2013	FY 2012	Difference	% change - Cumulative Sales	FY 2013	FY 2012	Difference	% change - Cumulative Sales	FY 2013	FY 2012	Difference	% change - Cumulative Sales
43	6/22/2013		\$57,892,076				\$17,594,154				\$75,486,230		
44	6/29/2013		\$57,497,435				\$18,153,658				\$75,651,093		
45	7/6/2013		\$60,345,000				\$19,059,152				\$79,404,152		
46	7/13/2013		\$57,683,321				\$18,751,043				\$76,434,364		
47	7/20/2013		\$57,083,343				\$18,769,201				\$75,852,544		
48	7/27/2013		\$54,006,781				\$18,934,103				\$72,940,884		
49	8/3/2013		\$56,557,409				\$20,206,705				\$76,764,114		
50	8/10/2013		\$57,799,452				\$22,832,120				\$80,631,572		
51	8/17/2013		\$54,845,724				\$25,435,624				\$80,281,348		
52	8/24/2013		\$55,661,277				\$17,524,474				\$73,185,751		
	8/31/2013		\$47,363,984				\$14,929,528				\$62,293,512		
Total thru Current Week		\$2,071,841,244	\$1,983,529,596	\$88,311,648	4.5%	\$720,611,986	\$736,544,001	(\$15,932,015)	-2.2%	\$2,792,453,230	\$2,720,073,597	\$72,379,633	2.7%
Fiscal Year Total		\$2,071,841,244	\$3,086,141,354			\$720,611,986	\$1,104,674,559			\$2,792,453,230	\$4,190,815,913		

\*\* FY 2012 includes 3 days; FY 2013 includes 1 day.

### Texas Lottery Commission Fiscal Year Over Year Change in Sales



Note: Week 1 is not a full week of sales as this report is prepared on a Fiscal Year basis.

Texas Lottery Commission  
Instant Tickets by Price Point  
Sales, Prize Expense, Sales Contribution and Payout Percentage With Year Over Year Changes  
Unaudited

Fiscal Year	Price Point	# of Active Games	FY Sales	% of Instant Ticket Sales	Year over Year Change in Sales	FY Prize Expense	Year over Year Change in Prize Expense	FY Sales Contribution	Year over Year Change in Contribution	Average Prize Payout %	Year over Year Change in Payout %
2012	\$1.00	33	144,655,823	7.3%		88,095,395		56,560,428		60.9%	0.2%
thru	\$2.00	33	267,966,328	13.5%		174,280,707		93,685,621		65.0%	-0.8%
4/21/2012	\$3.00	18	236,868,603	11.9%		155,273,242		81,595,361		65.6%	-0.1%
	\$5.00	44	648,182,805	32.7%		441,159,767		207,023,038		68.1%	0.2%
	\$7.00	4	18,186,427	0.9%		12,366,658		5,819,769		68.0%	0.0%
	\$10.00	17	324,947,780	16.4%		229,554,526		95,393,254		70.6%	-0.5%
	\$20.00	6	258,731,680	13.0%		193,243,511		65,488,169		74.7%	0.1%
	\$50.00	2	83,990,150	4.2%		65,222,212		18,767,938		77.7%	0.0%
<b>Total</b>		<b>157</b>	<b>\$1,983,529,596</b>			<b>\$1,359,196,019</b>		<b>\$624,333,577</b>		<b>68.5%</b>	<b>0.0%</b>
2013	\$1.00	31	125,326,285	6.0%		76,573,479		48,752,806		61.1%	0.8%
thru	\$2.00	35	265,370,142	12.8%		172,492,818		92,877,324		65.0%	-0.1%
4/20/2013	\$3.00	19	247,902,093	12.0%		162,452,890		85,449,203		65.5%	0.0%
	\$5.00	53	650,246,175	31.4%		442,365,820		207,880,355		68.0%	0.0%
	\$7.00	2	16,201,759	0.8%		11,011,789		5,189,970		68.0%	0.0%
	\$10.00	12	382,881,810	18.5%		272,035,683		110,846,127		71.0%	0.2%
	\$20.00	8	286,966,180	13.9%		214,842,157		72,124,023		74.9%	0.1%
	\$50.00	3	96,946,800	4.7%		75,267,082		21,679,718		77.6%	0.0%
<b>Total</b>		<b>163</b>	<b>\$2,071,841,244</b>			<b>\$1,427,041,719</b>		<b>\$644,799,525</b>		<b>68.9%</b>	<b>0.4%</b>
Variance	\$1.00	-2	-19,329,538		-13.4%	-11,521,916	-13.1%	-7,807,622	-13.8%	0.20%	
2013 to	\$2.00	2	-2,596,186		-1.0%	-1,787,888	-1.0%	-808,298	-0.9%	-0.04%	
2012	\$3.00	1	11,033,490		4.7%	7,179,648	4.6%	3,853,842	4.7%	-0.02%	
	\$5.00	9	2,063,370		0.3%	1,206,053	0.3%	857,317	0.4%	-0.03%	
	\$7.00	-2	-1,984,668		-10.9%	-1,354,869	-11.0%	-629,799	-10.8%	-0.03%	
	\$10.00	-5	57,934,030		17.8%	42,481,157	18.5%	15,452,873	16.2%	0.41%	
	\$20.00	2	28,234,500		10.9%	21,598,646	11.2%	6,635,854	10.1%	0.18%	
	\$50.00	1	12,956,650		15.4%	10,044,870	15.4%	2,911,780	15.5%	-0.02%	
<b>Total</b>		<b>6</b>	<b>\$88,311,648</b>		<b>4.5%</b>	<b>\$67,845,701</b>	<b>5.0%</b>	<b>\$20,465,947</b>	<b>3.3%</b>	<b>0.36%</b>	

Notes - Instant Ticket Variances

Texas Lottery Commission  
**Instant Tickets by Price Point**  
**Sales, Prize Expense, Sales Contribution and Payout Percentage With Year Over Year Changes**  
 Unaudited

			FY 2013		FY 2012	Difference
Sales	\$1 - \$7	1	\$1,305,046,454		\$1,315,859,986	-\$10,813,532
Prize Exp.	\$1 - \$7	1	\$864,896,797		\$871,175,770	-\$6,278,972
Sales Cont.	\$1 - \$7	1	\$440,149,657		\$444,684,216	-\$4,534,560
Prize Exp. %	\$1 - \$7	1	66.3%		66.2%	0.1%
			FY 2013		FY 2012	Difference
Sales	\$10 - \$50	2	\$766,794,790		\$667,669,610	\$99,125,180
Prize Exp.	\$10 - \$50	2	\$562,144,922		\$488,020,249	\$74,124,673
Sales Cont.	\$10 - \$50	1	\$204,649,868		\$179,649,361	\$25,000,507
Prize Exp. %	\$10 - \$50	2	73.3%		73.1%	0.2%
			FY 2013		FY 2012	Difference
Sales	Instant		\$2,071,841,244		\$1,983,529,596	\$88,311,648
Prize Exp.	Instant		\$1,427,041,719		\$1,359,196,019	\$67,845,701
Sales Cont.	Instant		\$644,799,525		\$624,333,577	\$20,465,947
Prize Exp. %	Instant		68.9%		68.5%	0.4%

			FY 2013		FY 2012	Difference
Sales	\$1 - \$10		\$1,687,928,264		\$1,640,807,766	\$47,120,498
Prize Exp.	\$1 - \$10		\$1,136,932,481		\$1,100,730,296	\$36,202,185
Sales Cont.	\$1 - \$10		\$550,995,783		\$540,077,470	\$10,918,313
Prize Exp. %	\$1 - \$10		67.4%		67.1%	0.3%
			FY 2013		FY 2012	Difference
Sales	\$20 - \$50		\$383,912,980		\$342,721,830	\$41,191,150
Prize Exp.	\$20 - \$50		\$290,109,239		\$258,465,723	\$31,643,516
Sales Cont.	\$20 - \$50		\$93,803,741		\$84,256,107	\$9,547,634
Prize Exp. %	\$20 - \$50		75.6%		75.4%	0.2%
			FY 2013		FY 2012	Difference
Sales	Instant		\$2,071,841,244		\$1,983,529,596	\$88,311,648
Prize Exp.	Instant		\$1,427,041,719		\$1,359,196,019	\$67,845,701
Sales Cont.	Instant		\$644,799,525		\$624,333,577	\$20,465,947
Prize Exp. %	Instant		68.9%		68.5%	0.4%



Texas Lottery Commission  
**Weekly Sales Summary**  
**& Comparison to Previous Week**  
 Unaudited

	Week Ending 04/20/2013	% of Sales	Week Ending 04/13/2013	% of Sales	\$ change	% change
	<u>THIS WEEK</u>		<u>LAST WEEK</u>			
Total Sales	<u>\$83,497,155</u>		<u>\$84,436,693</u>		<u>-\$939,538</u>	-1.11%
Instant Tickets	<u>\$63,252,072</u>	75.8%	<u>\$64,738,900</u>	76.7%	<u>-\$1,486,828</u>	-2.30%
Lotto	\$2,818,780	3.4%	\$2,446,701	2.9%	\$372,079	15.21%
Lotto Extra	\$401,661	0.5%	\$0	0.0%	\$401,661	0.00%
Pick 3	\$5,239,302	6.3%	\$5,338,308	6.3%	-\$99,006	-1.85%
Pick 3 Sum It Up	\$99,844	0.1%	\$100,575	0.1%	-\$731	-0.73%
Cash Five	\$1,060,275	1.3%	\$1,079,753	1.3%	-\$19,478	-1.80%
Texas Two Step	\$903,889	1.1%	\$1,245,341	1.5%	-\$341,452	-27.42%
Mega Millions	\$2,467,440	3.0%	\$2,326,285	2.8%	\$141,155	6.07%
Megaplier	\$541,931	0.6%	\$524,253	0.6%	\$17,678	3.37%
Daily 4	\$1,479,524	1.8%	\$1,550,435	1.8%	-\$70,911	-4.57%
Daily 4 Sum It Up	\$91,413	0.1%	\$92,346	0.1%	-\$933	-1.01%
Powerball	\$3,254,662	3.9%	\$3,014,428	3.6%	\$240,234	7.97%
Power Play	\$416,958	0.5%	\$401,719	0.5%	\$15,239	3.79%
All or Nothing	\$1,469,404	1.8%	\$1,577,650	1.9%	-\$108,246	-6.86%
Total Draw Game Sales	<u>\$20,245,083</u>		<u>\$19,697,793</u>		<u>\$547,291</u>	2.78%

\* Totals may not sum due to rounding.

Texas Lottery Commission  
Weekly Sales Summary  
Unaudited

INSTANT TICKETS  
TOP TEN SELLING GAMES

For the Week Ending: 04/20/13

Rank	Price Point	Game	Sales (Millions)
1	\$ 10	10X MEGA MONEY	\$ 5.305
2	\$ 20	CASH EXCITEMENT	\$ 3.008
3	\$ 5	\$75,000 CASHWORD-O-RAMA	\$ 2.607
4	\$ 5	GREAT 8'S	\$ 2.491
5	\$ 3	LOTERIA TEXAS	\$ 2.443
6	\$ 5	PLATINUM 10X	\$ 2.434
7	\$ 5	SIZZLIN' 7'S	\$ 2.382
8	\$ 20	\$500 MILLION EXTREME CASH BLAST	\$ 2.334
9	\$ 10	\$200 MILLION CASH SPECTACULAR	\$ 2.195
10	\$ 5	MAXIMUM JACKPOT	\$ 2.133

Texas Lottery Commission  
Prize Payout Tracking Report  
Unaudited

Through Week Ending 04/20/13

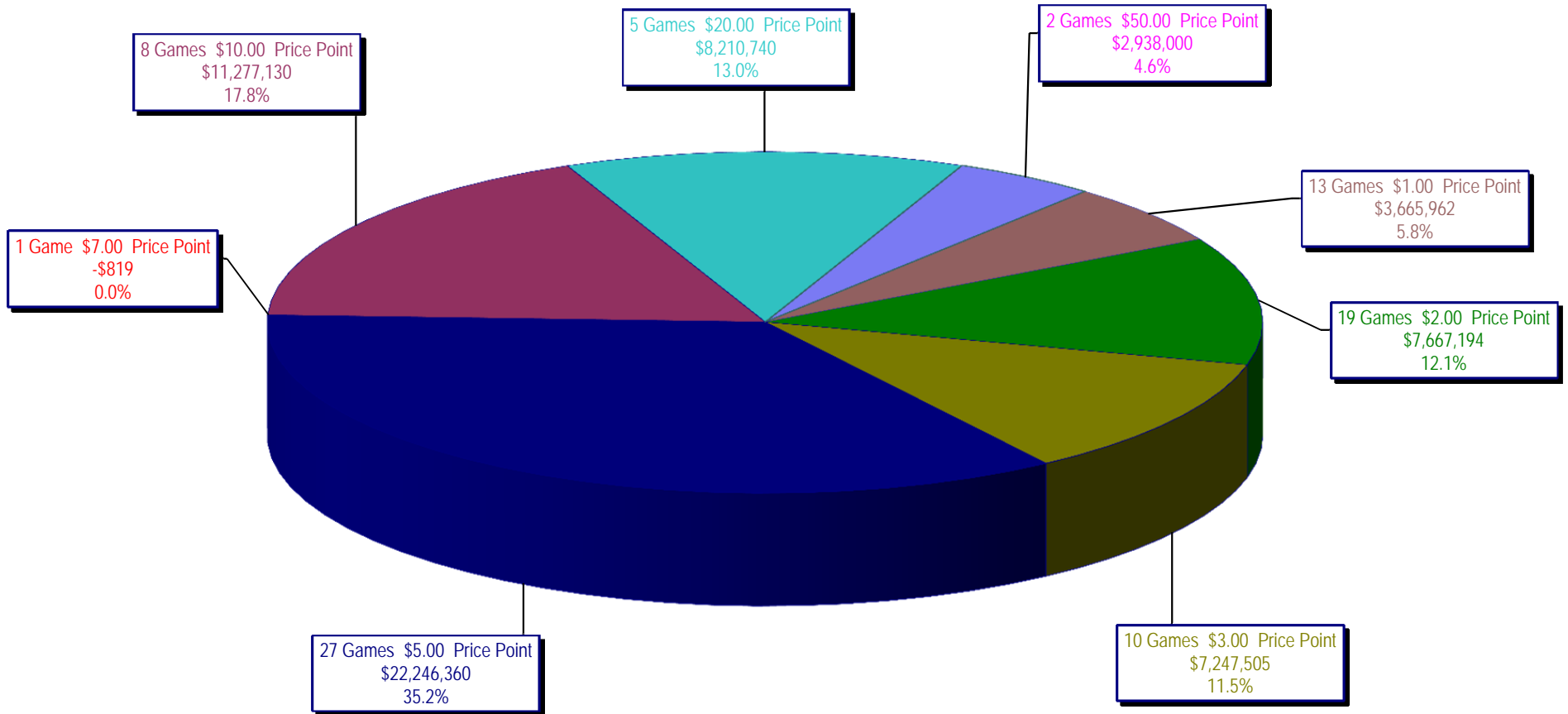
Draw Game Sales

		FY Sales Through Week Ending 4/20/2013		FY Prize Expense Through Week Ending 4/20/2013	Actual* Prize Payout	Base Payout (Prize Pool)
Lotto	\$	96,262,246	\$	76,917,054	79.90%	50.00%
Lotto Extra		401,661		201,860	50.26%	50.00%
Pick 3		172,414,188		86,972,720	50.44%	50.00%
Pick 3 Sum It Up		3,240,406		1,648,583	50.88%	50.00%
Cash Five		36,063,190		18,033,534	50.01%	50.00%
Texas Two Step		37,680,512		18,985,329	50.39%	50.00%
Mega Millions		66,608,861		32,755,218	49.18%	50.00%**
Megaplier		15,611,375		7,355,732	47.12%	N/A
Daily 4		46,784,298		23,380,250	49.97%	50.00%
Daily 4 Sum It Up		3,048,882		1,263,740	41.45%	50.00%
Powerball		169,876,999		88,031,906	51.82%	50.00%**
Power Play		17,999,057		10,291,565	57.18%	N/A
All or Nothing		54,620,311		31,927,652	58.45%	50.00%
<b>Totals</b>	\$	<b>720,611,986</b>	\$	<b>397,765,142</b>	<b>55.20%</b>	

\* Before Unclaimed Prizes

\*\* Estimated; depends on # of guaranteed prizes won in Texas

Texas Lottery Commission  
Instant Ticket Sales  
For the Week Ending 04/20/13  
(Unaudited)



**Texas Lottery Commission**  
**All Game Sales**  
**For the Week Ending 04/20/13**  
**(Unaudited)**

