



WEEKLY SALES SUMMARY

Unaudited

Week Ending: 04/25/2009

Texas Lottery Commission
Fiscal Year to Date Sales Comparison
Unaudited

Through the week ending 04/25/2009 (34 weeks)

Sales by Game	FY 2007 *	FY 2008 **	FY 2009	\$ Change		% Change	
				FY 2009 to FY 2007	FY 2009 to FY 2008	FY 2009 to FY 2007	FY 2009 to FY 2008
Instant	\$ 1,870,955,589	\$ 1,854,999,867	\$ 1,814,723,592	\$ -56,231,997	\$ -40,276,275	-3.0%	-2.2%
Lotto Texas	162,811,946	135,947,295	124,872,305	-37,939,641	-11,074,990	-23.3%	-8.1%
Pick 3	205,964,626	189,099,704	188,424,339	-17,540,288	-675,365	-8.5%	-0.4%
Pick 3 Sum It Up	-	4,183,579	3,966,779	3,966,779	-216,800	-	-5.2%
Cash 5	57,767,807	50,331,267	46,836,529	-10,931,278	-3,494,738	-18.9%	-6.9%
Texas Two Step	34,104,058	30,551,917	33,540,483	-563,575	2,988,566	-1.7%	9.8%
Mega Millions	121,551,349	112,037,416	125,107,887	3,556,538	13,070,471	2.9%	11.7%
Megaplier	28,089,202	26,591,495	28,630,777	541,575	2,039,282	1.9%	7.7%
Daily 4	-	27,821,466	29,519,863	29,519,863	1,698,397	-	6.1%
Daily 4 Sum It Up	-	6,229,108	3,592,758	3,592,758	-2,636,350	-	-42.3%
Total	\$ 2,481,244,577	\$ 2,437,793,113	\$ 2,399,215,310	\$ -82,029,267	\$ -38,577,802	-3.3%	-1.6%

* 3 extra days in 2007 ** 2 extra days in 2008

Texas Lottery Commission
Fiscal Year Over Year Change in Sales
Unaudited
FY 2009 Compared to FY 2008

Week	FY 2009 Week Ending	INSTANT TICKETS				ON-LINE GAMES				TOTAL SALES			
		FY 2009	FY 2008	Difference	% change - Cumulative Sales	FY 2009	FY 2008	Difference	% change - Cumulative Sales	FY 2009	FY 2008	Difference	% change - Cumulative Sales
1	9/6/2008**	\$44,890,104	\$62,376,229	(\$17,486,125)	-28.0%	\$14,722,011	\$19,372,224	(\$4,650,213)	-24.0%	\$59,612,115	\$81,748,453	(\$22,136,338)	-27.1%
2	9/13/2008	\$46,309,551	\$52,458,866	(\$6,149,315)	-20.6%	\$13,704,860	\$16,926,163	(\$3,221,303)	-21.7%	\$60,014,411	\$69,385,029	(\$9,370,618)	-20.8%
3	9/20/2008	\$42,923,171	\$49,998,934	(\$7,075,763)	-18.6%	\$12,291,263	\$15,792,283	(\$3,501,020)	-21.8%	\$55,214,434	\$65,791,217	(\$10,576,783)	-19.4%
4	9/27/2008	\$47,042,801	\$49,894,175	(\$2,851,374)	-15.6%	\$14,222,339	\$14,800,514	(\$578,175)	-17.9%	\$61,265,140	\$64,694,689	(\$3,429,549)	-16.2%
5	10/4/2008	\$50,747,162	\$53,486,863	(\$2,739,701)	-13.5%	\$15,784,472	\$16,618,430	(\$833,958)	-15.3%	\$66,531,634	\$70,105,293	(\$3,573,659)	-14.0%
6	10/11/2008	\$49,763,789	\$50,918,020	(\$1,154,231)	-11.7%	\$15,622,498	\$15,601,410	\$21,088	-12.9%	\$65,386,287	\$66,519,430	(\$1,133,143)	-12.0%
7	10/18/2008	\$49,299,053	\$50,532,253	(\$1,233,200)	-10.5%	\$15,167,940	\$15,682,666	(\$514,726)	-11.6%	\$64,466,993	\$66,214,919	(\$1,747,926)	-10.7%
8	10/25/2008	\$49,977,581	\$50,347,450	(\$369,869)	-9.3%	\$14,525,843	\$15,586,516	(\$1,060,673)	-11.0%	\$64,503,424	\$65,933,966	(\$1,430,542)	-9.7%
9	11/1/2008	\$50,346,542	\$53,953,733	(\$3,607,191)	-9.0%	\$14,838,845	\$16,775,983	(\$1,937,139)	-11.1%	\$65,185,387	\$70,729,716	(\$5,544,330)	-9.5%
10	11/8/2008	\$54,860,087	\$53,635,090	\$1,224,997	-7.9%	\$16,057,069	\$15,912,791	\$144,278	-9.9%	\$70,917,156	\$69,547,881	\$1,369,275	-8.3%
11	11/15/2008	\$53,484,812	\$51,254,401	\$2,230,411	-6.8%	\$15,829,819	\$15,797,076	\$32,744	-9.0%	\$69,314,631	\$67,051,477	\$2,263,155	-7.3%
12	11/22/2008	\$52,806,511	\$50,897,817	\$1,908,694	-5.9%	\$16,460,748	\$15,801,720	\$659,028	-7.9%	\$69,267,259	\$66,699,537	\$2,567,722	-6.4%
13	11/29/2008	\$52,199,741	\$53,913,115	(\$1,713,374)	-5.7%	\$17,397,576	\$17,055,505	\$342,072	-7.1%	\$69,597,317	\$70,968,620	(\$1,371,303)	-6.0%
14	12/6/2008	\$56,731,851	\$55,702,697	\$1,029,154	-5.1%	\$20,363,789	\$17,900,717	\$2,463,073	-5.5%	\$77,095,640	\$73,603,414	\$3,492,227	-5.2%
15	12/13/2008	\$54,109,617	\$53,703,516	\$406,101	-4.7%	\$22,952,228	\$17,820,841	\$5,131,387	-3.0%	\$77,061,845	\$71,524,357	\$5,537,488	-4.3%
16	12/20/2008	\$55,777,328	\$57,592,769	(\$1,815,441)	-4.6%	\$15,833,517	\$17,436,233	(\$1,602,716)	-3.4%	\$71,610,845	\$75,029,002	(\$3,418,157)	-4.3%
17	12/27/2008	\$57,597,885	\$57,696,003	(\$98,118)	-4.3%	\$15,851,771	\$14,743,680	\$1,108,091	-2.9%	\$73,449,656	\$72,439,683	\$1,009,973	-4.0%
18	1/3/2009	\$57,582,115	\$57,935,952	(\$353,837)	-4.1%	\$16,900,028	\$15,704,450	\$1,195,578	-2.3%	\$74,482,143	\$73,640,402	\$841,741	-3.7%
19	1/10/2009	\$54,250,945	\$55,360,542	(\$1,109,597)	-4.0%	\$16,203,220	\$15,691,540	\$511,680	-2.0%	\$70,454,165	\$71,052,082	(\$597,917)	-3.5%
20	1/17/2009	\$51,625,339	\$54,920,166	(\$3,294,827)	-4.1%	\$15,701,605	\$16,259,669	(\$558,064)	-2.1%	\$67,326,944	\$71,179,835	(\$3,852,891)	-3.6%
21	1/24/2009	\$52,789,573	\$54,439,890	(\$1,650,317)	-4.1%	\$15,897,473	\$16,691,724	(\$794,251)	-2.2%	\$68,687,046	\$71,131,614	(\$2,444,568)	-3.6%
22	1/31/2009	\$55,453,471	\$57,464,382	(\$2,010,911)	-4.0%	\$16,908,272	\$17,968,227	(\$1,059,955)	-2.4%	\$72,361,743	\$75,432,609	(\$3,070,866)	-3.7%
23	2/7/2009	\$62,247,711	\$60,715,019	\$1,532,692	-3.7%	\$18,354,314	\$20,097,338	(\$1,743,025)	-2.7%	\$80,602,025	\$80,812,357	(\$210,333)	-3.5%
24	2/14/2009	\$60,509,056	\$57,093,143	\$3,415,913	-3.3%	\$19,218,078	\$22,179,908	(\$2,961,831)	-3.3%	\$79,727,134	\$79,273,051	\$454,083	-3.3%
25	2/21/2009	\$59,194,623	\$57,627,047	\$1,567,576	-3.0%	\$21,098,199	\$27,230,539	(\$6,132,340)	-4.5%	\$80,292,822	\$84,857,586	(\$4,564,764)	-3.4%
26	2/28/2009	\$58,857,216	\$55,591,667	\$3,265,549	-2.7%	\$24,116,924	\$17,016,118	\$7,100,806	-2.8%	\$82,974,140	\$72,607,785	\$10,366,355	-2.7%
27	3/7/2009	\$59,552,257	\$56,837,481	\$2,714,776	-2.4%	\$23,995,136	\$16,690,193	\$7,304,943	-1.1%	\$83,547,393	\$73,527,674	\$10,019,719	-2.1%
28	3/14/2009	\$53,754,084	\$54,587,112	(\$833,028)	-2.4%	\$18,769,831	\$16,448,165	\$2,321,667	-0.6%	\$72,523,915	\$71,035,277	\$1,488,639	-1.9%
29	3/21/2009	\$52,581,107	\$53,098,937	(\$517,830)	-2.3%	\$15,903,038	\$16,639,184	(\$736,146)	-0.7%	\$68,484,145	\$69,738,121	(\$1,253,976)	-1.9%
30	3/28/2009	\$52,560,961	\$53,933,689	(\$1,372,728)	-2.3%	\$16,094,933	\$17,698,625	(\$1,603,692)	-1.0%	\$68,655,894	\$71,632,314	(\$2,976,420)	-2.0%
31	4/4/2009	\$56,249,759	\$57,598,982	(\$1,349,223)	-2.3%	\$17,357,002	\$17,665,411	(\$308,409)	-1.0%	\$73,606,761	\$75,264,393	(\$1,657,632)	-2.0%
32	4/11/2009	\$54,440,987	\$53,954,185	\$486,802	-2.2%	\$17,660,600	\$15,860,784	\$1,799,816	-0.7%	\$72,101,587	\$69,814,969	\$2,286,618	-1.9%
33	4/18/2009	\$52,755,834	\$53,946,736	(\$1,190,902)	-2.2%	\$18,469,585	\$16,452,676	\$2,016,909	-0.3%	\$71,225,419	\$70,399,412	\$826,007	-1.8%
34	4/25/2009	\$51,450,968	\$51,533,006	(\$82,038)	-2.2%	\$20,216,898	\$16,873,949	\$3,342,950	0.3%	\$71,667,866	\$68,406,955	\$3,260,912	-1.6%
35	5/2/2009		\$53,250,568				\$18,202,103				\$71,452,671		
36	5/9/2009		\$54,060,849				\$18,422,562				\$72,483,411		
37	5/16/2009		\$54,010,641				\$20,728,360				\$74,739,001		
38	5/23/2009		\$50,377,032				\$15,461,384				\$65,838,416		
39	5/30/2009		\$49,545,080				\$15,175,370				\$64,720,450		
40	6/6/2009		\$53,702,986				\$15,982,166				\$69,685,152		

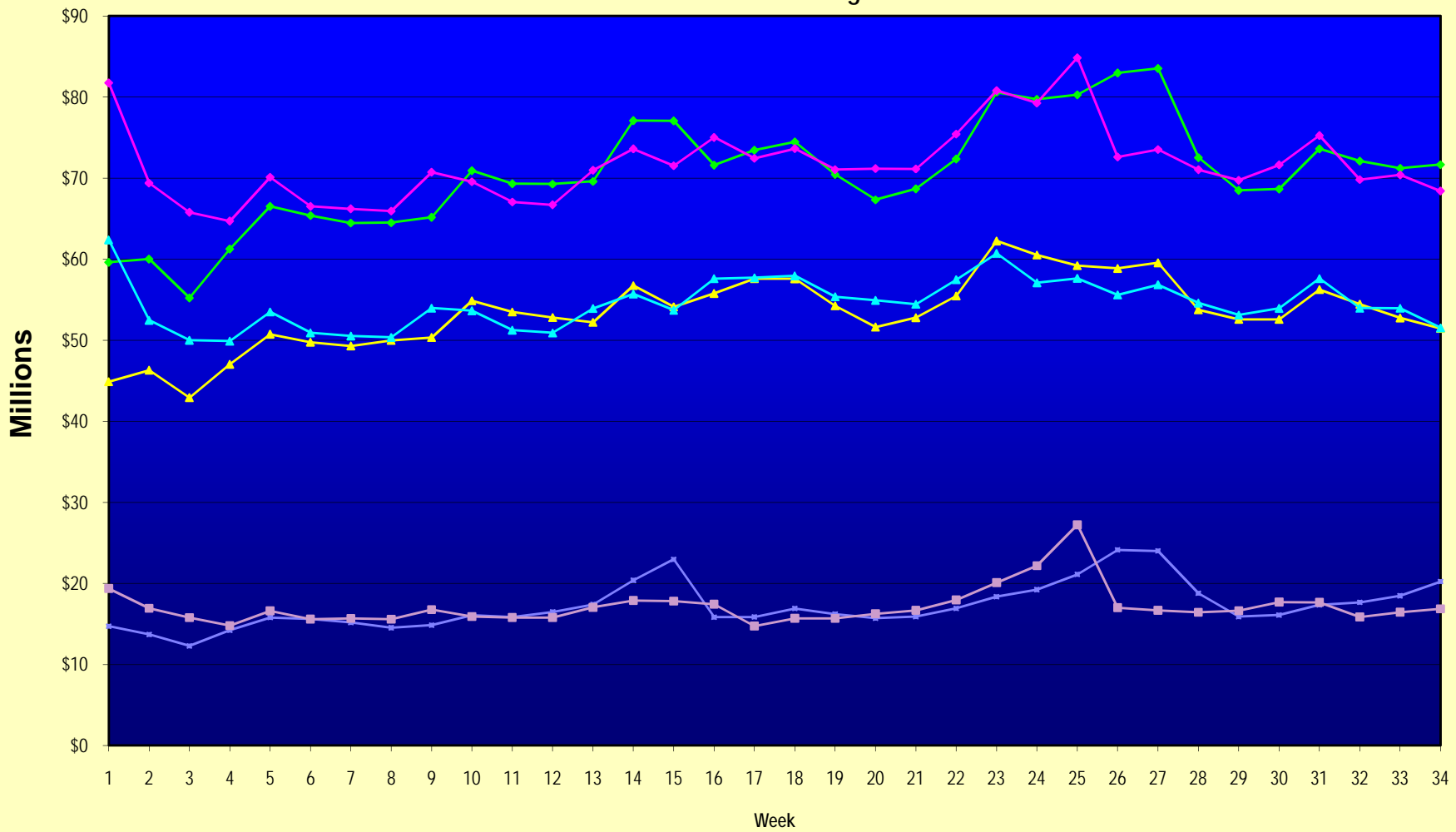
Note: Week 1 is not a full week of sales as this report is prepared on a Fiscal Year basis.

Texas Lottery Commission
Fiscal Year Over Year Change in Sales
Unaudited
FY 2009 Compared to FY 2008

Week	FY 2009 Week Ending	INSTANT TICKETS				ON-LINE GAMES				TOTAL SALES			
		FY 2009	FY 2008	Difference	% change - Cumulative Sales	FY 2009	FY 2008	Difference	% change - Cumulative Sales	FY 2009	FY 2008	Difference	% change - Cumulative Sales
41	6/13/2009		\$51,171,483				\$16,589,087				\$67,760,570		
42	6/20/2009		\$50,650,362				\$15,728,484				\$66,378,846		
43	6/27/2009		\$49,258,266				\$15,250,905				\$64,509,171		
44	7/4/2009		\$53,393,355				\$16,270,619				\$69,663,974		
45	7/11/2009		\$53,127,756				\$16,914,922				\$70,042,678		
46	7/18/2009		\$51,593,146				\$17,752,738				\$69,345,884		
47	7/25/2009		\$49,902,181				\$16,706,145				\$66,608,326		
48	8/1/2009		\$49,605,420				\$16,254,383				\$65,859,803		
49	8/8/2009		\$50,961,907				\$16,770,496				\$67,732,403		
50	8/15/2009		\$49,452,511				\$16,749,487				\$66,201,998		
51	8/22/2009		\$49,249,518				\$17,286,302				\$66,535,820		
52	8/29/2009		\$49,468,928				\$18,109,997				\$67,578,925		
53	9/5/2009		\$6,054,239				\$493,109				\$6,547,348		
Total thru Current Week		\$1,814,723,592	\$1,854,999,867	(\$40,276,275)	-2.2%	\$584,491,718	\$582,793,246	\$1,698,473	0.3%	\$2,399,215,310	\$2,437,793,113	(\$38,577,802)	-1.6%
Fiscal Year Total		\$1,814,723,592	\$2,783,836,095			\$584,491,718	\$887,641,858			\$2,399,215,310	\$3,671,477,953		

** FY 2009 includes 6 days; FY 2008 includes 8 days
FY 2009 average daily sales are \$9,242,258. Two days at average daily sales are \$18,484,516.

Texas Lottery Commission Fiscal Year Over Year Change in Sales



◆ Total Sales 2009
 ◆ Total Sales 2008
 ▲ Instant Tickets 2009
 ▲ Instant Tickets 2008
 ◆ On-Line Games 2009
 ■ On-Line Games 2008

Note: Week 1 is not a full week of sales as this report is prepared on a Fiscal Year basis.

Texas Lottery Commission
Instant Tickets by Price Point
Sales, Prize Expense, Sales Contribution and Payout Percentage With Year Over Year Changes
Unaudited

Fiscal Year	Price Point	# of Active Games	FY Sales	% of Instant Ticket Sales	Year over Year Change in Sales	FY Prize Expense	Year over Year Change in Prize Expense	FY Sales Contribution	Year over Year Change in Contribution	Average Prize Payout %	Year over Year Change in Payout %
2008	\$1.00	41	154,359,409	8.3%		92,795,604		61,563,805		60.1%	0.0%
thru	\$2.00	50	304,410,666	16.4%		198,100,923		106,309,743		65.1%	0.3%
4/26/2008	\$3.00	16	163,443,030	8.8%		107,413,694		56,029,336		65.7%	-0.2%
	\$5.00	44	515,689,410	27.8%		349,275,317		166,414,093		67.7%	-0.4%
	\$7.00	11	107,713,781	5.8%		73,255,664		34,458,117		68.0%	0.1%
	\$10.00	18	279,398,546	15.1%		194,272,134		85,126,412		69.5%	-1.4%
	\$20.00	8	130,584,920	7.0%		93,863,806		36,721,114		71.9%	-0.1%
	\$25.00	2	48,862,625	2.6%		35,477,391		13,385,234		72.6%	0.3%
	\$30.00	3	43,475,580	2.3%		31,470,141		12,005,439		72.4%	0.2%
	\$50.00	2	107,061,900	5.8%		77,242,618		29,819,282		72.1%	0.0%
Total		195	\$1,854,999,867			\$1,253,167,291		\$601,832,576		67.6%	0.1%
2009	\$1.00	40	158,851,053	8.8%		95,523,600		63,327,453		60.1%	0.1%
thru	\$2.00	38	311,976,772	17.3%		203,390,689		108,586,083		65.2%	-0.1%
4/25/2009	\$3.00	16	189,826,452	10.5%		124,625,863		65,200,589		65.7%	-0.1%
	\$5.00	42	557,144,494	30.7%		378,904,750		178,239,744		68.0%	0.1%
	\$7.00	8	91,528,416	5.0%		62,245,384		29,283,032		68.0%	0.0%
	\$10.00	18	258,387,300	14.2%		180,791,172		77,596,128		70.0%	0.0%
	\$20.00	8	159,048,600	8.9%		114,119,900		44,928,700		71.8%	0.0%
	\$25.00	1	2,372,325	0.1%		1,725,527		646,798		72.7%	0.2%
	\$30.00	3	10,024,230	0.6%		7,263,928		2,760,302		72.5%	0.1%
	\$50.00	4	75,563,950	4.0%		55,197,140		20,366,810		73.0%	1.2%
Total		178	\$1,814,723,592			\$1,223,787,952		\$590,935,640		67.4%	-0.3%
Variance	\$1.00	-1	4,491,644		2.9%	2,727,996	2.9%	1,763,648	2.9%	0.02%	
2009 to	\$2.00	-12	7,566,106		2.5%	5,289,766	2.7%	2,276,340	2.1%	0.12%	
2008	\$3.00	0	26,383,422		16.1%	17,212,169	16.0%	9,171,253	16.4%	-0.07%	
	\$5.00	-2	41,455,084		8.0%	29,629,433	8.5%	11,825,651	7.1%	0.28%	
	\$7.00	-3	-16,185,365		-15.0%	-11,010,280	-15.0%	-5,175,085	-15.0%	0.00%	
	\$10.00	0	-21,011,246		-7.5%	-13,480,962	-6.9%	-7,530,284	-8.8%	0.44%	
	\$20.00	0	28,463,680		21.8%	20,256,094	21.6%	8,207,586	22.4%	-0.13%	
	\$25.00	-1	-46,490,300		-95.1%	-33,751,864	-95.1%	-12,738,436	-95.2%	0.13%	
	\$30.00	0	-33,451,350		-76.9%	-24,206,213	-76.9%	-9,245,137	-77.0%	0.08%	
	\$50.00	2	-31,497,950		-29.4%	-22,045,478	-28.5%	-9,452,472	-31.7%	0.90%	
Total		-17	-\$40,276,275		-2.2%	-\$29,379,338	-2.3%	-\$10,896,937	-1.8%	-0.12%	

Texas Lottery Commission
Instant Tickets by Price Point
Sales, Prize Expense, Sales Contribution and Payout Percentage With Year Over Year Changes
Unaudited

Notes - Instant Ticket Variances

		FY 2009		FY 2008		Difference
Sales	\$1 - \$7	\$1,309,327,187		\$1,245,616,296		\$63,710,891
Prize Exp.	\$1 - \$7	\$864,690,285		\$820,841,201		\$43,849,084
Sales Cont.	\$1 - \$7	\$444,636,902		\$424,775,095		\$19,861,807
Prize Exp. %	\$1 - \$7	66.0%		65.9%		0.1%
		FY 2009		FY 2008		Difference
Sales	\$10 - \$50	\$505,396,405		\$609,383,571		-\$103,987,166
Prize Exp.	\$10 - \$50	\$359,097,667		\$432,326,090		-\$73,228,423
Sales Cont.	\$10 - \$50	\$146,298,738		\$177,057,481		-\$30,758,743
Prize Exp. %	\$10 - \$50	71.1%		70.9%		0.1%
		FY 2009		FY 2008		Difference
Sales	Instant	\$1,814,723,592		\$1,854,999,867		-\$40,276,275
Prize Exp.	Instant	\$1,223,787,952		\$1,253,167,291		-\$29,379,338
Sales Cont.	Instant	\$590,935,640		\$601,832,576		-\$10,896,937
Prize Exp. %	Instant	67.4%		67.6%		-0.1%

		FY 2009		FY 2008		Difference
Sales	\$1 - \$10	\$1,567,714,487		\$1,525,014,842		\$42,699,645
Prize Exp.	\$1 - \$10	\$1,045,481,456		\$1,015,113,335		\$30,368,122
Sales Cont.	\$1 - \$10	\$522,233,031		\$509,901,507		\$12,331,523
Prize Exp. %	\$1 - \$10	66.7%		66.6%		0.1%
		FY 2009		FY 2008		Difference
Sales	\$20 - \$50	\$247,009,105		\$329,985,025		-\$82,975,920
Prize Exp.	\$20 - \$50	\$178,306,496		\$238,053,956		-\$59,747,460
Sales Cont.	\$20 - \$50	\$68,702,609		\$91,931,069		-\$23,228,460
Prize Exp. %	\$20 - \$50	72.2%		72.1%		0.0%
		FY 2009		FY 2008		Difference
Sales	Instant	\$1,814,723,592		\$1,854,999,867		-\$40,276,275
Prize Exp.	Instant	\$1,223,787,952		\$1,253,167,291		-\$29,379,338
Sales Cont.	Instant	\$590,935,640		\$601,832,576		-\$10,896,937
Prize Exp. %	Instant	67.4%		67.6%		-0.1%

Texas Lottery Commission
Weekly Sales Summary
& Comparison to Previous Week
 Unaudited

	Week Ending 04/25/2009	% of Sales	Week Ending 04/18/2009	% of Sales	\$ change	% change
	<u>THIS WEEK</u>		<u>LAST WEEK</u>			
Total Sales	<u>\$71,667,866</u>		<u>\$71,225,419</u>		<u>\$442,447</u>	0.62%
Instant Tickets	<u>\$51,450,968</u>	71.8%	<u>\$52,755,834</u>	74.1%	<u>-\$1,304,866</u>	-2.47%
Lotto Texas	\$3,517,624	4.9%	\$3,462,217	4.9%	\$55,407	1.60%
Pick 3	\$5,408,673	7.5%	\$5,627,572	7.9%	-\$218,900	-3.89%
Pick 3 Sum It Up	\$117,315	0.2%	\$117,124	0.2%	\$191	0.16%
Cash 5	\$1,347,754	1.9%	\$1,374,682	1.9%	-\$26,928	-1.96%
Texas Two Step	\$876,206	1.2%	\$829,493	1.2%	\$46,713	5.63%
Mega Millions	\$6,614,121	9.2%	\$4,960,982	7.0%	\$1,653,139	33.32%
Megaplier	\$1,298,021	1.8%	\$1,040,136	1.5%	\$257,885	24.79%
Daily 4	\$937,777	1.3%	\$957,161	1.3%	-\$19,384	-2.03%
Daily 4 Sum It Up	\$99,409	0.1%	\$100,219	0.1%	-\$810	-0.81%
Total Online Sales	<u>\$20,216,898</u>		<u>\$18,469,585</u>		<u>\$1,747,313</u>	9.46%

* Totals may not sum due to rounding.

Texas Lottery Commission
Weekly Sales Summary
Unaudited

INSTANT TICKETS
TOP TEN SELLING GAMES

For the Week Ending : 04/25/2009

Rank	Price Point	Game	Sales (Millions)
1	\$ 5	SAPPHIRE BLUE 5'S	\$ 4.187
2	\$ 50	\$140,000,000 EXTREME PAYOUT	\$ 2.674
3	\$ 3	BONUS CASHWORD	\$ 2.654
4	\$ 10	PRECIOUS JEWELS	\$ 2.642
5	\$ 5	EXTREME 8'S	\$ 2.283
6	\$ 7	\$75,000 CASINO	\$ 1.911
7	\$ 10	STACKS OF CASH	\$ 1.900
8	\$ 7	DAZZLIN' DIAMOND 7'S	\$ 1.687
9	\$ 5	BONUS BREAK THE BANK	\$ 1.527
10	\$ 20	SUPER SET FOR LIFE	\$ 1.503

Texas Lottery Commission
Prize Payout Tracking Report
Unaudited

Through Week Ending 04/25/2009

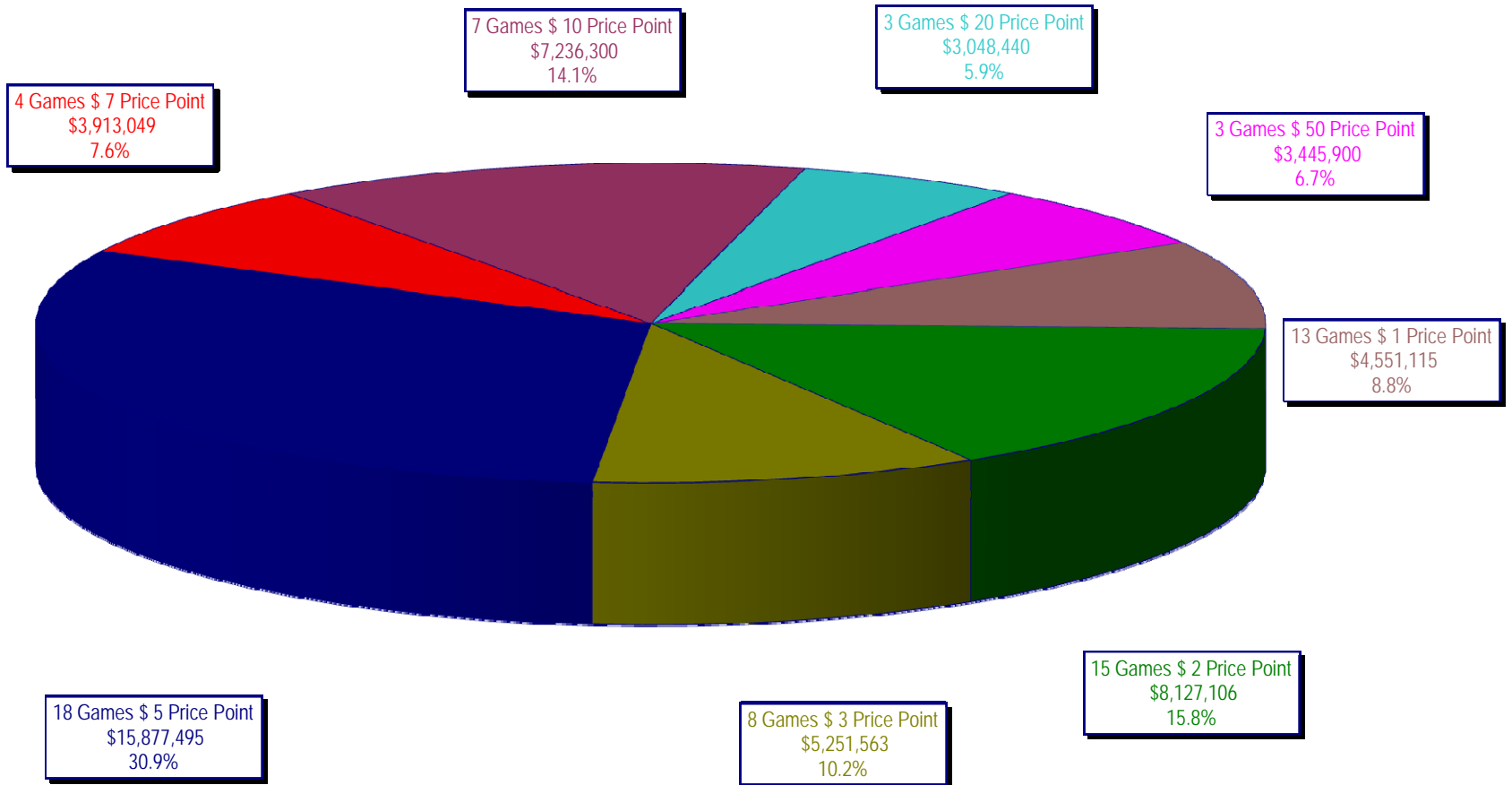
On-Line Sales

		FY Sales Through Week Ending 4/25/2009		FY Prize Expense Through Week Ending 4/25/2009	Actual* Prize Payout	Base Payout (Prize Pool)
Lotto	\$	124,872,305	\$	62,557,148	50.10%	50.00%
Pick 3		188,424,339		92,248,390	48.96%	50.00%
Pick 3 Sum It Up		3,966,779		1,791,966	45.17%	50.00%
Cash 5		46,836,529		23,522,121	50.22%	50.00%
Texas Two-Step		33,540,483		18,025,745	53.74%	50.00%
Mega Millions		125,107,887		60,626,051	48.46%	50.00%**
Megaplier		28,630,777		12,212,819	42.66%	N/A
Daily 4		29,519,863		14,547,400	49.28%	50.00%
Daily 4-Sum It Up		3,592,758		1,503,182	41.84%	50.00%
Totals	\$	584,491,718	\$	287,034,821	49.11%	

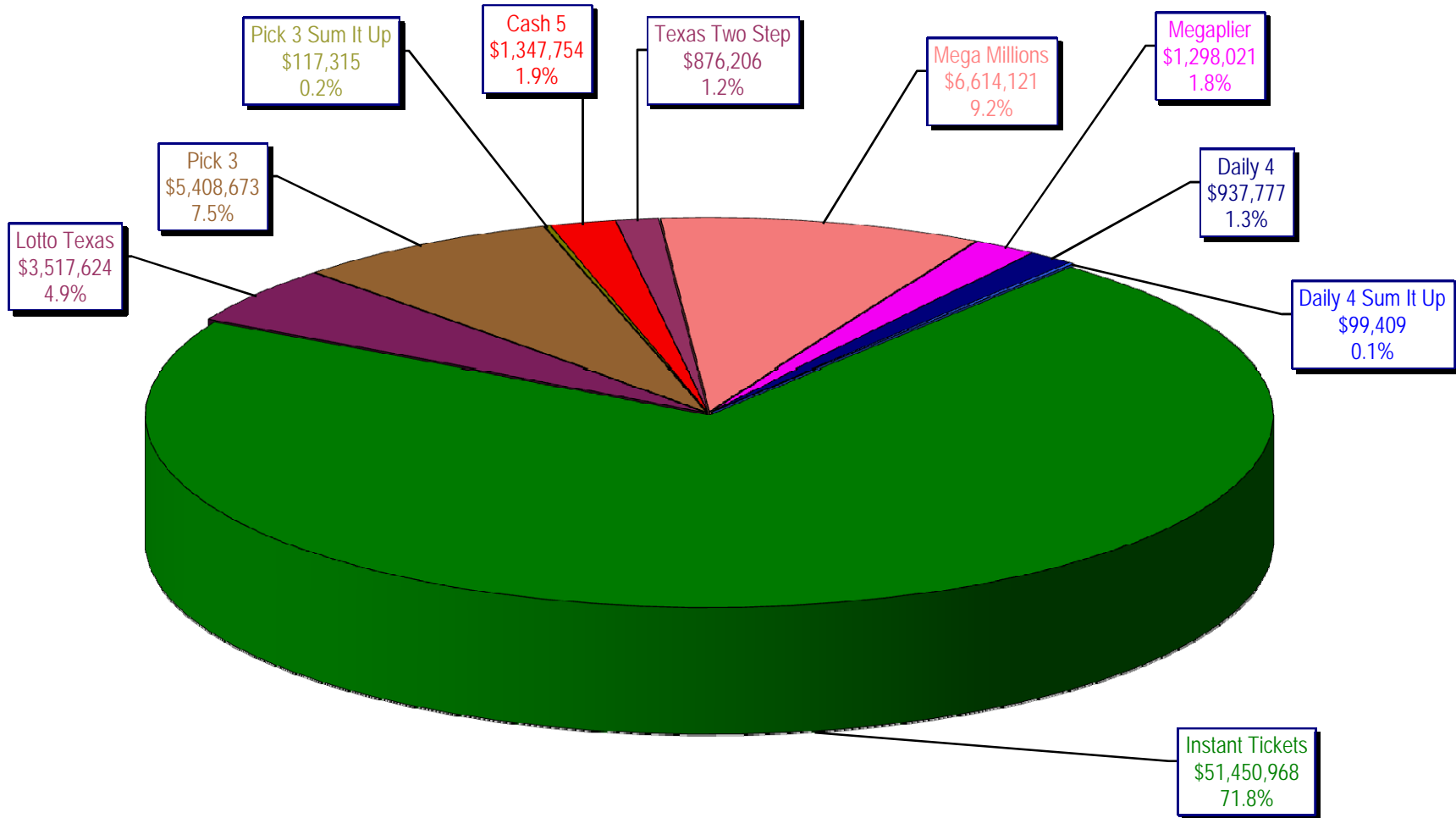
* Before Unclaimed Prizes

** Estimated; depends on # of guaranteed prizes won in Texas

Texas Lottery Commission
Instant Ticket Sales
For the Week Ending 04/25/2009
(Unaudited)



Texas Lottery Commission
All Game Sales
For the Week Ending 04/25/2009
(Unaudited)



Texas Lottery Commission - Weekly Sales Summary for FY 2009 (Unaudited)

Week Ended	Instant Games	New Games & Dates	Lotto Texas	Jackpot		Pick 3	Pick 3 Sum It Up	Cash 5	Texas Two Step	Jackpot		Mega Millions	Jackpot		Megaplier	Daily 4	Daily 4 Sum It Up	Total	Per Cap.
				W	S					M/T	TH/F		T	F					
9/6/2008	50,944,343.00	1108 (\$2,N), 1088 (\$3, N) - 9/01/08	3,378,718.00	5	6	5,436,414.00	122,123.00	1,396,622.00	890,346.00	350	450	2,445,490.00	12	16	649,090.00	786,482.50	109,834.00	66,159,462.50	2.77
9/13/2008	46,309,551.00	1109 (\$1,N), 1098 (\$5, N) - 9/08/08	3,020,089.00	7	8	4,705,585.50	105,899.00	1,279,412.00	856,199.00	600	200	2,327,214.00	24	12	617,672.00	696,633.00	96,156.50	60,014,411.00	2.51
9/20/2008	42,923,171.00	0	3,054,093.00	9	10	4,121,734.50	90,718.00	1,155,350.00	637,792.00	225	250	1,978,127.00	15	12	540,225.00	627,210.00	86,013.50	55,214,434.00	2.31
9/27/2008	47,042,801.00	1111 (\$2,N), 1099 (\$5, N) - 9/22/08	3,427,671.00	11	12	4,821,563.00	103,189.50	1,288,062.00	834,307.00	275	425	2,322,862.00	16	24	617,085.00	709,741.50	97,858.00	61,265,140.00	2.56
10/4/2008	50,747,162.00	1113 (\$1,N) 9/29/08	3,675,683.00	13	14	5,305,711.00	116,332.50	1,369,040.00	1,074,874.00	525	650	2,671,927.00	32	42	693,845.00	770,782.50	106,277.00	66,531,634.00	2.78
10/11/2008	49,763,789.00	0	3,732,365.00	15	16	5,287,094.00	114,665.50	1,370,334.00	1,305,250.00	800	975	2,306,070.00	12	16	622,120.00	778,204.00	106,395.00	65,386,286.50	2.74
10/18/2008	49,299,053.00	1117 (\$3,N), 1118 (\$20,N) - 10/13/08	3,780,438.00	17	18	5,149,258.00	109,530.00	1,355,601.00	741,849.00	200	200	2,500,644.00	23	32	652,198.00	776,366.00	102,056.00	64,466,993.00	2.70
10/25/2008	49,977,581.00	1119 (\$1,N), 1120 (\$5,N) - 10/20/08	3,210,762.00	4	5	5,099,671.00	107,104.50	1,339,079.00	789,649.00	225	275	2,456,965.00	42	12	641,206.00	778,434.00	102,972.50	64,503,424.00	2.70
11/1/2008	50,346,542.00	1121 (\$2,N), 1122 (\$10,N) - 10/27/08	3,325,641.00	6	7	5,234,124.00	109,983.00	1,339,046.00	946,035.00	375	475	2,347,596.00	16	23	626,235.00	805,572.00	104,612.50	65,185,386.50	2.73
11/8/2008	54,860,087.00	1123 (\$3,N), 1124 (\$7,N) - 11/03/08; 1103 (\$3,N) - 11/05/08; 1063 (\$3,N) - 11/07/08	3,290,417.00	4	5	5,686,701.00	118,495.00	1,397,985.00	1,158,101.00	625	750	2,729,302.50	31	42	692,662.00	871,230.00	112,175.50	70,917,156.00	2.97
11/15/2008	53,484,812.00	1125 (\$1, N), 1126 (\$5,N) - 11/10/08	3,336,934.00	6	7	5,459,984.00	112,884.00	1,366,024.00	766,955.00	200	225	3,102,251.00	51	62	749,736.00	830,957.00	104,094.00	69,314,631.00	2.90
11/22/2008	52,806,511.00	0	3,452,481.00	8	9	5,329,591.00	108,861.50	1,358,271.00	743,950.00	200	200	3,666,517.00	73	86	847,201.00	849,077.50	104,797.50	69,267,258.50	2.90
11/29/2008	52,199,741.00	1127 (\$2,N), 1128 (\$5,N) - 11/24/08	3,585,374.00	10	11	5,340,783.50	111,443.00	1,315,233.00	686,077.00	200	225	4,441,715.00	96	111	968,906.00	845,475.50	102,569.00	69,597,317.00	2.91
12/6/2008	56,731,851.00	0	3,794,991.00	12	13	5,752,593.00	121,663.50	1,416,446.00	780,328.00	250	200	6,238,355.00	128	146	1,270,214.00	881,841.50	107,357.00	77,095,640.00	3.23
12/13/2008	54,109,617.00	1129 (\$1, N) - 12/08/08	3,315,658.00	4	5	5,580,770.00	114,295.50	1,384,858.00	766,893.00	225	250	9,150,536.00	170	207	1,691,121.00	846,176.50	101,919.50	77,061,844.50	3.22
12/20/2008	55,777,328.00	1104 (\$2,N), 1105 (\$5,N), 1106 (\$10,N) - 12/15/08	3,432,340.00	6	7	5,741,120.00	116,075.50	1,401,805.00	741,945.00	200	200	2,736,234.00	12	16	687,875.00	871,579.50	104,543.00	71,610,845.00	3.00
12/27/2008	57,597,885.00	1077 (\$1,N), 1110 (\$1,N) - 12/22/08	3,582,169.00	8	4	5,628,081.50	115,323.00	1,340,590.00	708,906.00	225	250	2,842,167.00	22	29	706,042.00	828,346.00	100,146.00	73,449,655.50	3.07
1/3/2009	57,582,115.00	0	3,784,763.00	5	6	5,690,220.50	120,519.50	1,406,807.00	934,000.00	325	525	3,190,457.00	37	46	780,850.00	885,674.00	106,736.50	74,482,142.50	3.12
1/10/2009	54,250,945.00	1135 (\$2,N), 1136 (\$5,N) - 1/5/09	3,582,400.00	7	8	5,476,890.00	116,674.50	1,403,531.00	1,267,847.00	675	900	2,701,275.00	12	16	681,574.00	868,919.00	104,109.50	70,454,165.00	2.95
1/17/2009	51,625,339.00	1137 (\$1,N), 1138 (\$3,N) - 1/12/09	3,668,302.50	9	10	5,443,159.00	112,605.00	1,387,958.00	778,563.00	200	200	2,683,707.00	22	12	675,416.00	852,987.00	98,907.50	67,326,944.00	2.82
1/24/2009	52,789,573.00	1115 (\$2,N), 1116 (\$5,N) - 1/19/09	3,723,835.50	11	12	5,514,547.50	115,827.50	1,376,695.00	860,483.00	225	325	2,692,611.00	16	21	676,936.00	836,996.00	99,541.00	68,687,045.50	2.87
1/31/2009	55,453,471.00	1080 (\$1,N), 1024 (\$20,R) - 1/26/09; 1062 (\$5,N) - 1/28/09	3,837,299.00	13	14	5,700,714.50	121,794.50	1,403,756.00	1,070,879.00	450	600	3,002,883.00	30	40	731,253.00	925,937.50	113,755.50	72,361,743.00	3.03
2/7/2009	62,247,711.00	1035 (\$2,N), 1144 (\$5,N), 1058 (\$10, N) - 2/2/09	4,092,117.00	15	16	6,336,717.00	134,543.00	1,481,812.00	842,746.00	200	225	3,509,032.00	50	60	829,550.00	1,007,529.00	120,267.50	80,602,024.50	3.37
2/14/2009	60,509,056.00	1146 (\$7,N), 1089 (\$1,N) - 2/9/09	4,119,193.00	17	18	6,363,028.00	133,901.50	1,445,616.00	1,013,987.00	325	450	4,082,572.00	73	85	928,813.00	1,010,898.50	120,068.50	79,727,133.50	3.34
2/21/2009	59,194,623.00	1046 (\$2,N), 1140 (\$5,N) - 2/16/09	4,326,401.00	19	20	6,038,807.50	128,493.00	1,439,312.00	1,268,803.00	600	750	5,614,471.00	103	120	1,178,133.00	988,075.00	115,703.50	80,292,822.00	3.36
2/28/2009	58,857,216.00	1132 (\$10,N), 1149 (\$1,N) - 2/23/09	4,526,304.00	21	22	6,084,457.50	128,979.50	1,439,607.00	1,668,414.00	925	1,150	7,676,975.00	145	171	1,504,895.00	973,121.00	114,171.00	82,974,140.00	3.47

Texas Lottery Commission - Weekly Sales Summary for FY 2009 (Unaudited)

Week Ended	Instant Games	New Games & Dates	Lotto Texas	Jackpot		Pick 3	Pick 3 Sum It Up	Cash 5	Texas Two Step	Jackpot		Mega Millions	Jackpot		Megaplier	Daily 4	Daily 4 Sum It Up	Total	Per Cap.
				W	S					M/T	TH/F		T	F					
3/7/2009	59,552,257.00	0	4,928,440.00	23	25	6,133,789.00	128,599.00	1,487,185.00	1,984,358.00	1,350	1,600	6,898,457.00	212	12	1,349,427.00	971,644.50	113,236.00	83,547,392.50	3.50
3/14/2009	53,754,084.00	1139 (\$2.N), 1079 (\$5.N) - 3/09/09	4,752,592.00	26	28	5,850,166.00	120,684.50	1,418,127.00	2,112,571.00	1,900	2,150	2,782,204.00	16	26	698,214.00	925,615.00	109,657.50	72,523,915.00	3.03
3/21/2009	52,581,107.00	1107 (\$1.N), 1154 (\$3.N), 1057 (\$10.N) - 3/16/09; 1102 (\$2.N) - 3/19/09	3,437,818.00	4	5	5,776,041.50	117,294.00	1,399,720.00	880,620.00	200	225	2,595,785.00	12	16	653,517.00	934,185.00	108,057.50	68,484,145.00	2.87
3/28/2009	52,560,961.00	1130 (\$5.N), 1150 (\$10.N) - 3/23/09	3,486,731.00	6	7	5,633,454.50	114,269.50	1,381,550.00	901,673.00	300	200	2,845,499.00	24	34	701,971.00	925,093.50	104,691.50	68,655,894.00	2.87
4/4/2009	56,249,759.00	1151 (\$2.N), 1101 (\$50.N) - 3/30/09	3,746,083.00	8	9	5,893,043.50	122,332.00	1,429,598.00	940,614.00	225	300	3,321,274.00	43	54	794,282.00	998,042.00	111,733.50	73,606,761.00	3.08
4/11/2009	54,440,987.00	1153 (\$2.N) - 4/07/09; 1152 (\$3.N) - 4/08/09	3,594,176.00	10	4	5,893,551.00	120,491.50	1,394,879.00	933,807.00	425	200	3,772,700.00	65	78	857,890.00	987,127.50	105,977.50	72,101,586.50	3.02
4/18/2009	52,755,834.00	1145 (\$1.N), 1148 (\$5.N) - 4/13/09	3,462,217.00	5	6	5,627,572.00	117,123.50	1,374,682.00	829,493.00	225	200	4,960,982.00	92	109	1,040,136.00	957,161.00	100,218.50	71,225,419.00	2.98
4/25/2009	51,450,968.00	1051 (\$7.N) - 4/20/09	3,517,624.00	7	8	5,408,672.50	117,314.50	1,347,754.00	876,206.00	225	300	6,614,120.95	130	155	1,298,021.00	937,777.00	99,408.50	71,667,866.45	3.00
weekly change	-2.47%		1.60%			-3.89%	0.16%	-1.96%	5.63%			33.32%			24.79%	-2.03%	-0.81%	0.62%	
	SALES		SALES			SALES	SALES	SALES	SALES			SALES			SALES	SALES	SALES	SALES	% of Sales
Startup to date	35,295,309,594.00		10,403,969,352.00			3,487,143,291.00	10,452,608.50	2,165,992,539.00	459,806,201.00			1,051,246,482.45			246,838,811.00	71,736,834.00	11,931,561.00	53,412,561,245.95	100.0%
Calendar Year to date	913,405,919.00		64,600,060.00			95,983,792.00	175,670.50	23,254,085.00	18,647,064.00			67,289,578.95			14,970,996.00	15,529,175.50	1,790,753.50	1,215,647,094.45	100.0%
Fiscal Year to date 2009	1,814,723,592.00		124,872,305.00			188,424,338.50	3,966,778.50	46,836,529.00	33,540,483.00			125,107,887.45			28,630,777.00	29,519,862.50	3,592,757.50	2,399,215,310.45	100.0%