



*WEEKLY SALES SUMMARY*

Unaudited

**Week Ending: 4/28/2018**

**Texas Lottery Commission**  
**Fiscal Year to Date Sales Comparison**  
**Unaudited**

Through the Week Ending 4/28/2018 (35 Weeks)

Sales by Game	FY 2016 *	FY 2017 **	FY 2018	\$ Change		% Change	
				FY 2018 to FY 2016	FY 2018 to FY 2017	FY 2018 to FY 2016	FY 2018 to FY 2017
Scratch Tickets	\$ 2,484,338,086	\$ 2,596,617,745	\$ 2,903,361,939	\$ 419,023,853	\$ 306,744,194	16.9%	11.8%
Lotto Texas	83,494,715	76,009,302	77,270,428	-6,224,287	1,261,126	-7.5%	1.7%
Lotto Extra	14,558,670	14,844,906	16,997,436	2,438,766	2,152,530	16.8%	14.5%
Pick 3	171,445,785	166,943,157	169,190,404	-2,255,381	2,247,247	-1.3%	1.3%
Pick 3 Sum It Up	3,512,443	3,194,725	3,378,984	-133,459	184,260	-3.8%	5.8%
Cash Five	31,227,281	29,247,343	28,121,496	-3,105,785	-1,125,847	-9.9%	-3.8%
Texas Two Step	36,116,591	36,739,979	35,206,155	-910,436	-1,533,824	-2.5%	-4.2%
Mega Millions	83,579,816	75,441,285	141,815,461	58,235,645	66,374,176	69.7%	88.0%
Megaplier	21,311,359	20,485,986	23,053,824	1,742,465	2,567,838	8.2%	12.5%
MM Just the Jackpot	-	-	1,141,026	1,141,026	1,141,026	-	-
Daily 4	60,443,875	62,898,125	71,242,876	10,799,001	8,344,751	17.9%	13.3%
Daily 4 Sum It Up	3,195,849	3,396,767	3,843,842	647,993	447,075	20.3%	13.2%
Powerball	356,350,818	151,587,009	182,784,100	-173,566,718	31,197,091	-48.7%	20.6%
Power Play	39,530,427	21,489,448	27,059,092	-12,471,335	5,569,644	-31.5%	25.9%
All or Nothing	20,930,264	19,240,964	19,269,035	-1,661,229	28,071	-7.9%	0.1%
Texas Triple Chance	17,316,382	9,994,316	8,220,857	-9,095,525	-1,773,459	-52.5%	-17.7%
<b>Total</b>	<b>\$ 3,427,352,360</b>	<b>\$ 3,288,131,056</b>	<b>\$ 3,711,956,954</b>	<b>\$ 284,604,594</b>	<b>\$ 423,825,898</b>	<b>8.3%</b>	<b>12.9%</b>

\* 3 extra days

\*\* 1 extra day

**Texas Lottery Commission**  
**Fiscal Year to Date Cumulative Average Sales Comparison**  
**Unaudited**

Through the Week Ending 4/28/2018 (35 Weeks)

<b>Sales by Game</b>	<b>FY 2016</b>	<b>FY 2017</b>	<b>FY 2018</b>
Scratch Tickets	\$ 10,223,614	\$ 10,774,347	\$ 12,097,341
Lotto Texas	343,600	315,391	321,960
Lotto Extra	59,912	61,597	70,823
Pick 3	705,538	692,710	704,960
Pick 3 Sum It Up	14,454	13,256	14,079
Cash Five	128,507	121,358	117,173
Texas Two Step	148,628	152,448	146,692
Mega Millions	343,950	313,034	590,898
Megaplier	87,701	85,004	96,058
MM Just the Jackpot	-	- **	6,235
Daily 4	248,740	260,988	296,845
Daily 4 Sum It Up	13,152	14,094	16,016
Powerball	1,466,464	628,992	761,600
Power Play	162,677	89,168	112,746
All or Nothing	86,133	79,838	80,288
Texas Triple Chance	* 79,799	41,470	34,254
<b>Total</b>	<b>\$ 14,112,869</b>	<b>\$ 13,643,697</b>	<b>\$ 15,467,968</b>

	thru 4/30/2016	thru 4/29/2017	thru 4/28/2018
	243 days	241 days	240 days
*	217 days		** 183 days

**Texas Lottery Commission**  
**Fiscal Year Over Year Change in Sales**  
**Unaudited**  
**FY 2018 Compared to FY 2017**

			SCRATCH TICKETS				DRAW GAMES				TOTAL SALES			
FY 2018			FY 2018	FY 2017	Difference	% change - Cumulative Sales	FY 2018	FY 2017	Difference	% change - Cumulative Sales	FY 2018	FY 2017	Difference	% change - Cumulative Sales
Week	Week Ending													
1	9/2/2017 *		\$23,058,926	\$32,980,266	(\$9,921,340)	-30.1%	\$6,902,847	\$10,218,656	(\$3,315,809)	-32.4%	\$29,961,773	\$43,198,922	(\$13,237,149)	-30.6%
2	9/9/2017		\$71,784,232	\$65,952,418	\$5,831,814	8.8%	\$18,779,001	\$19,635,377	(\$856,376)	-4.4%	\$90,563,233	\$85,587,795	\$4,975,438	5.8%
3	9/16/2017		\$72,828,393	\$66,196,270	\$6,632,123	10.0%	\$19,679,292	\$20,915,290	(\$1,235,999)	-5.9%	\$92,507,685	\$87,111,560	\$5,396,125	6.2%
4	9/23/2017		\$71,147,147	\$64,383,005	\$6,764,142	10.5%	\$18,601,742	\$17,451,165	\$1,150,577	6.6%	\$89,748,889	\$81,834,170	\$7,914,719	9.7%
5	9/30/2017		\$74,749,619	\$67,349,951	\$7,399,668	11.0%	\$18,436,682	\$17,519,852	\$916,830	5.2%	\$93,186,301	\$84,869,803	\$8,316,498	9.8%
6	10/7/2017		\$78,134,381	\$71,598,690	\$6,535,691	9.1%	\$19,297,281	\$18,211,107	\$1,086,174	6.0%	\$97,431,662	\$89,809,797	\$7,621,865	8.5%
7	10/14/2017		\$74,084,207	\$69,444,762	\$4,639,445	6.7%	\$19,185,335	\$18,075,261	\$1,110,074	6.1%	\$93,269,542	\$87,520,023	\$5,749,519	6.6%
8	10/21/2017		\$77,631,892	\$69,317,066	\$8,314,826	12.0%	\$19,573,636	\$18,422,336	\$1,151,300	6.2%	\$97,205,528	\$87,739,402	\$9,466,126	10.8%
9	10/28/2017		\$76,385,130	\$69,729,599	\$6,655,531	9.5%	\$18,788,634	\$18,535,248	\$253,386	1.4%	\$95,173,764	\$88,264,847	\$6,908,917	7.8%
10	11/4/2017		\$78,814,323	\$73,451,702	\$5,362,621	7.3%	\$19,564,629	\$20,151,939	(\$587,310)	-2.9%	\$98,378,952	\$93,603,641	\$4,775,312	5.1%
11	11/11/2017		\$78,572,697	\$70,998,320	\$7,574,377	10.7%	\$19,317,440	\$19,925,460	(\$608,020)	-3.1%	\$97,890,137	\$90,923,780	\$6,966,358	7.7%
12	11/18/2017		\$81,674,704	\$75,265,196	\$6,409,508	8.5%	\$19,938,001	\$21,424,637	(\$1,486,636)	-6.9%	\$101,612,705	\$96,689,833	\$4,922,872	5.1%
13	11/25/2017		\$84,916,870	\$68,983,157	\$15,933,713	23.1%	\$19,968,524	\$24,223,331	(\$4,254,808)	-17.6%	\$104,885,393	\$93,206,488	\$11,678,905	12.5%
14	12/2/2017		\$81,453,005	\$72,688,514	\$8,764,491	12.1%	\$21,685,175	\$17,653,328	\$4,031,847	22.8%	\$103,138,180	\$90,341,842	\$12,796,338	14.2%
15	12/9/2017		\$81,251,421	\$71,676,549	\$9,574,872	13.4%	\$21,277,106	\$18,150,590	\$3,126,516	17.2%	\$102,528,526	\$89,827,139	\$12,701,388	14.1%
16	12/16/2017		\$83,850,250	\$73,909,726	\$9,940,524	13.4%	\$23,199,797	\$19,814,333	\$3,385,464	17.1%	\$107,050,047	\$93,724,059	\$13,325,988	14.2%
17	12/23/2017		\$87,941,872	\$77,369,179	\$10,572,693	13.7%	\$27,161,624	\$19,276,415	\$7,885,209	40.9%	\$115,103,496	\$96,645,594	\$18,457,902	19.1%
18	12/30/2017		\$88,089,746	\$80,868,854	\$7,220,892	8.9%	\$36,811,359	\$19,289,161	\$17,522,199	90.8%	\$124,901,105	\$100,158,015	\$24,743,091	24.7%
19	1/6/2018		\$85,627,935	\$73,328,624	\$12,299,311	16.8%	\$61,522,424	\$18,611,644	\$42,910,781	230.6%	\$147,150,359	\$91,940,268	\$55,210,091	60.0%
20	1/13/2018		\$84,788,310	\$73,471,643	\$11,316,667	15.4%	\$19,797,694	\$20,351,397	(\$553,703)	-2.7%	\$104,586,004	\$93,823,040	\$10,762,964	11.5%
21	1/20/2018		\$79,736,335	\$72,229,342	\$7,506,993	10.4%	\$18,928,359	\$20,349,310	(\$1,420,951)	-7.0%	\$98,664,694	\$92,578,652	\$6,086,042	6.6%
22	1/27/2018		\$84,274,095	\$72,056,793	\$12,217,302	17.0%	\$20,031,471	\$21,668,657	(\$1,637,186)	-7.6%	\$104,305,566	\$93,725,450	\$10,580,116	11.3%
23	2/3/2018		\$86,988,911	\$77,292,806	\$9,696,105	12.5%	\$21,857,656	\$22,161,789	(\$304,133)	-1.4%	\$108,846,566	\$99,454,595	\$9,391,972	9.4%
24	2/10/2018		\$89,937,200	\$78,699,192	\$11,238,008	14.3%	\$22,787,411	\$22,100,245	\$687,166	3.1%	\$112,724,611	\$100,799,437	\$11,925,174	11.8%
25	2/17/2018		\$87,786,021	\$77,864,124	\$9,921,897	12.7%	\$23,638,676	\$24,776,465	(\$1,137,789)	-4.6%	\$111,424,697	\$102,640,589	\$8,784,109	8.6%
26	2/24/2018		\$90,755,793	\$80,287,015	\$10,468,778	13.0%	\$23,457,390	\$28,133,116	(\$4,675,726)	-16.6%	\$114,213,183	\$108,420,131	\$5,793,052	5.3%
27	3/3/2018		\$98,824,633	\$87,500,184	\$11,324,449	12.9%	\$26,526,688	\$20,213,859	\$6,312,829	31.2%	\$125,351,321	\$107,714,043	\$17,637,278	16.4%
28	3/10/2018		\$94,905,657	\$84,966,053	\$9,939,604	11.7%	\$27,981,971	\$21,024,757	\$6,957,214	33.1%	\$122,887,628	\$105,990,810	\$16,896,818	15.9%
29	3/17/2018		\$91,348,015	\$82,972,977	\$8,375,038	10.1%	\$30,926,726	\$20,434,291	\$10,492,435	51.3%	\$122,274,741	\$103,407,268	\$18,867,473	18.2%
30	3/24/2018		\$93,810,063	\$82,217,628	\$11,592,435	14.1%	\$24,924,629	\$20,282,992	\$4,641,637	22.9%	\$118,734,692	\$102,500,620	\$16,234,072	15.8%
31	3/31/2018		\$99,679,358	\$86,271,920	\$13,407,438	15.5%	\$32,928,515	\$19,497,142	\$13,431,373	68.9%	\$132,607,872	\$105,769,062	\$26,838,810	25.4%
32	4/7/2018		\$94,700,487	\$81,499,404	\$13,201,083	16.2%	\$21,038,959	\$17,854,294	\$3,184,666	17.8%	\$115,739,446	\$99,353,698	\$16,385,749	16.5%
33	4/14/2018		\$92,913,454	\$81,831,134	\$11,082,320	13.5%	\$21,025,962	\$17,865,636	\$3,160,327	17.7%	\$113,939,416	\$99,696,770	\$14,242,647	14.3%
34	4/21/2018		\$91,480,306	\$80,531,863	\$10,948,443	13.6%	\$21,175,937	\$18,337,257	\$2,838,680	15.5%	\$112,656,242	\$98,869,120	\$13,787,122	13.9%
35	4/28/2018		\$89,436,552	\$81,433,819	\$8,002,733	9.8%	\$21,876,449	\$18,956,981	\$2,919,469	15.4%	\$111,313,001	\$100,390,800	\$10,922,201	10.9%
36	5/5/2018			\$84,857,262				\$19,489,624				\$104,346,886		
37	5/12/2018			\$81,090,824				\$19,420,237				\$100,511,061		
38	5/19/2018			\$80,557,866				\$20,939,291				\$101,497,157		
39	5/26/2018			\$78,141,293				\$21,072,651				\$99,213,944		
40	6/2/2018			\$78,991,820				\$23,569,252				\$102,561,072		
41	6/9/2018			\$77,859,970				\$29,337,930				\$107,197,900		
42	6/16/2018			\$75,964,093				\$18,618,777				\$94,582,870		

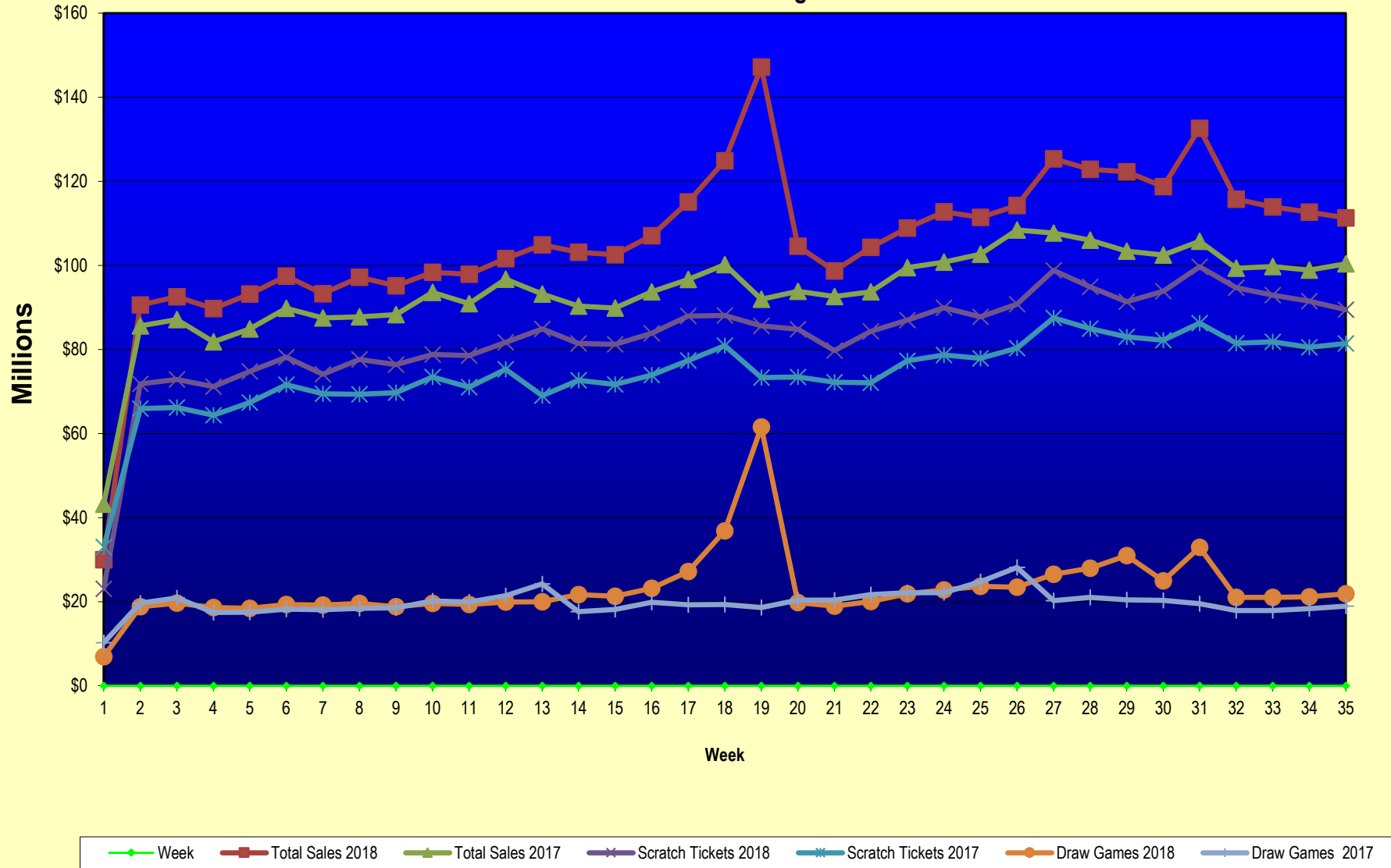
**Texas Lottery Commission**  
**Fiscal Year Over Year Change in Sales**  
**Unaudited**  
**FY 2018 Compared to FY 2017**

			SCRATCH TICKETS				DRAW GAMES				TOTAL SALES			
FY 2018			FY 2018	FY 2017	Difference	% change - Cumulative Sales	FY 2018	FY 2017	Difference	% change - Cumulative Sales	FY 2018	FY 2017	Difference	% change - Cumulative Sales
Week	Week	Ending												
43	6/23/2018			\$75,379,863				\$18,464,310				\$93,844,173		
44	6/30/2018			\$76,450,854				\$19,685,004				\$96,135,858		
45	7/7/2018			\$75,420,516				\$20,817,697				\$96,238,213		
46	7/14/2018			\$74,068,426				\$21,553,240				\$95,621,666		
47	7/21/2018			\$75,926,884				\$21,909,933				\$97,836,817		
48	7/28/2018			\$68,526,927				\$22,791,762				\$91,318,689		
49	8/4/2018			\$74,104,794				\$27,396,555				\$101,501,349		
50	8/11/2018			\$73,356,820				\$37,340,879				\$110,697,699		
51	8/18/2018			\$74,114,510				\$42,787,014				\$116,901,524		
52	8/25/2018			\$70,061,982				\$55,854,516				\$125,916,498		
	8/31/2018 **			\$43,727,573				\$9,679,652				\$53,407,225		
Total thru Current Week			\$2,903,361,939	\$2,596,617,745	\$306,744,194	11.8%	\$808,595,015	\$691,513,311	\$117,081,704	16.9%	\$3,711,956,954	\$3,288,131,056	\$423,825,898	12.9%
Fiscal Year Total			\$2,903,361,939	\$3,935,220,022			\$808,595,015	\$1,142,241,630			\$3,711,956,954	\$5,077,461,652		

\* FY 18 includes 2 days; FY 17 includes 3 days

\*\* FY 18 includes 6 days; FY 17 includes 5 days

### Texas Lottery Commission Fiscal Year Over Year Change in Sales



Note: Week 1 is not a full week of sales as this report is prepared on a Fiscal Year basis.

Texas Lottery Commission  
**Scratch Tickets by Price Point**  
**Sales, Prize Expense, Sales Contribution and Payout Percentage With Year Over Year Changes**  
 Unaudited

Fiscal Year	Price Point	# of Active Games	FY Sales	% of Scratch Ticket Sales	Year over Year Change in Sales	FY Prize Expense	Year over Year Change in Prize Expense	FY Sales Contribution	Year over Year Change in Contribution	Average Prize Payout %	Year over Year Change in Payout %
<b>2017</b>	<b>\$1.00</b>	22	100,426,688	3.9%		60,555,674		39,871,014		60.3%	0.1%
<b>Through</b>	<b>\$2.00</b>	26	219,440,148	8.5%		142,839,241		76,600,907		65.1%	-0.1%
<b>4/29/2017</b>	<b>\$3.00</b>	12	179,455,884	6.9%		118,329,899		61,125,986		65.9%	0.1%
	<b>\$5.00</b>	53	825,677,935	31.8%		561,093,768		264,584,167		68.0%	0.0%
	<b>\$10.00</b>	19	583,776,000	22.5%		410,762,770		173,013,230		70.4%	0.3%
	<b>\$20.00</b>	13	554,155,340	21.3%		415,255,797		138,899,543		74.9%	0.0%
	<b>\$30.00</b>	0	0	0.0%		0		0		0.0%	0.0%
	<b>\$50.00</b>	5	133,685,750	5.1%		104,040,051		29,645,699		77.8%	0.0%
<b>Total</b>		<b>150</b>	<b>\$2,596,617,745</b>			<b>\$1,812,877,200</b>		<b>\$783,740,545</b>		<b>69.8%</b>	<b>0.4%</b>
<b>2018</b>	<b>\$1.00</b>	21	107,764,493	3.7%		64,951,381		42,813,112		60.3%	0.0%
<b>Through</b>	<b>\$2.00</b>	23	198,313,294	6.8%		128,872,252		69,441,042		65.0%	-0.2%
<b>4/28/2018</b>	<b>\$3.00</b>	12	198,786,132	6.8%		131,156,522		67,629,610		66.0%	0.1%
	<b>\$5.00</b>	54	815,339,790	28.1%		554,454,815		260,884,975		68.0%	0.1%
	<b>\$10.00</b>	19	660,849,550	22.8%		463,217,007		197,632,543		70.1%	-0.3%
	<b>\$20.00</b>	17	648,550,120	22.3%		486,123,654		162,426,466		75.0%	0.0%
	<b>\$30.00</b>	1	38,844,960	1.3%		29,157,847		9,687,113		75.1%	0.0%
	<b>\$50.00</b>	5	234,913,600	8.1%		183,080,565		51,833,035		77.9%	0.0%
<b>Total</b>		<b>152</b>	<b>\$2,903,361,939</b>			<b>\$2,041,014,044</b>		<b>\$862,347,895</b>		<b>70.3%</b>	<b>0.6%</b>
<b>Variance</b>	<b>\$1.00</b>	-1	7,337,805		7.3%	4,395,707	7.3%	2,942,098	7.4%	-0.03%	
<b>2018 to</b>	<b>\$2.00</b>	-3	-21,126,854		-9.6%	-13,966,989	-9.8%	-7,159,865	-9.3%	-0.11%	
<b>2017</b>	<b>\$3.00</b>	0	19,330,248		10.8%	12,826,624	10.8%	6,503,624	10.6%	0.04%	
	<b>\$5.00</b>	1	-10,338,145		-1.3%	-6,638,953	-1.2%	-3,699,192	-1.4%	0.05%	
	<b>\$10.00</b>	0	77,073,550		13.2%	52,454,237	12.8%	24,619,313	14.2%	-0.27%	
	<b>\$20.00</b>	4	94,394,780		17.0%	70,867,857	17.1%	23,526,923	16.9%	0.02%	
	<b>\$30.00</b>	1	38,844,960		100.0%	29,157,847	100.0%	9,687,113	100.0%	75.06%	
	<b>\$50.00</b>	0	101,227,850		75.7%	79,040,514	76.0%	22,187,336	74.8%	0.11%	
<b>Total</b>		<b>2</b>	<b>\$306,744,194</b>		<b>11.8%</b>	<b>\$228,136,844</b>	<b>12.6%</b>	<b>\$78,607,350</b>	<b>10.0%</b>	<b>0.48%</b>	

Notes - Scratch Ticket Variances

**Texas Lottery Commission**  
**Scratch Tickets by Price Point**  
**Sales, Prize Expense, Sales Contribution and Payout Percentage With Year Over Year Changes**  
**Unaudited**

		FY 2018		FY 2017		Difference
Sales	\$1 - \$5		\$1,320,203,709		\$1,325,000,655	-\$4,796,946
Prize Exp.	\$1 - \$5		\$879,434,971		\$882,818,582	-\$3,383,611
Sales Cont.	\$1 - \$5		\$440,768,738		\$442,182,073	-\$1,413,335
Prize Exp. %	\$1 - \$5		66.6%		66.6%	0.0%
		FY 2018		FY 2017		Difference
Sales	\$10 - \$50		\$1,583,158,230		\$1,271,617,090	\$311,541,140
Prize Exp.	\$10 - \$50		\$1,161,579,073		\$930,058,618	\$231,520,455
Sales Cont.	\$10 - \$50		\$421,579,157		\$341,558,472	\$80,020,685
Prize Exp. %	\$10 - \$50		73.4%		73.1%	0.2%
		FY 2018		FY 2017		Difference
Sales	Scratch		\$2,903,361,939		\$2,596,617,745	\$306,744,194
Prize Exp.	Scratch		\$2,041,014,044		\$1,812,877,200	\$228,136,844
Sales Cont.	Scratch		\$862,347,895		\$783,740,545	\$78,607,350
Prize Exp. %	Scratch		70.3%		69.8%	0.5%

		FY 2018		FY 2017		Difference
Sales	\$1 - \$10		\$1,981,053,259		\$1,908,776,655	\$72,276,604
Prize Exp.	\$1 - \$10		\$1,342,651,978		\$1,293,581,352	\$49,070,626
Sales Cont.	\$1 - \$10		\$638,401,281		\$615,195,303	\$23,205,978
Prize Exp. %	\$1 - \$10		67.8%		67.8%	0.0%
		FY 2018		FY 2017		Difference
Sales	\$20 - \$50		\$922,308,680		\$687,841,090	\$234,467,590
Prize Exp.	\$20 - \$50		\$698,362,066		\$519,295,848	\$179,066,218
Sales Cont.	\$20 - \$50		\$223,946,614		\$168,545,242	\$55,401,372
Prize Exp. %	\$20 - \$50		75.7%		75.5%	0.2%
		FY 2018		FY 2017		Difference
Sales	Scratch		\$2,903,361,939		\$2,596,617,745	\$306,744,194
Prize Exp.	Scratch		\$2,041,014,044		\$1,812,877,200	\$228,136,844
Sales Cont.	Scratch		\$862,347,895		\$783,740,545	\$78,607,350
Prize Exp. %	Scratch		70.3%		69.8%	0.5%



**Texas Lottery Commission  
Weekly Sales Summary  
& Comparison to Previous Week  
Unaudited**

	<b>Week Ending 4/28/2018</b>	<b>% of Sales</b>	<b>Week Ending 4/21/2018</b>	<b>% of Sales</b>	<b>\$ change</b>	<b>% change</b>
	<b><u>THIS WEEK</u></b>		<b><u>LAST WEEK</u></b>			
Total Sales	<u>\$111,313,001</u>		<u>\$112,656,242</u>		<u>-\$1,343,241</u>	-1.19%
Scratch Tickets	<u>\$89,436,552</u>	80.3%	<u>\$91,480,306</u>	81.2%	<u>-\$2,043,754</u>	-2.23%
Lotto	\$2,527,306	2.3%	\$2,544,267	2.3%	-\$16,961	-0.67%
Lotto Extra	\$571,217	0.5%	\$576,593	0.5%	-\$5,376	-0.93%
Pick 3	\$5,065,622	4.6%	\$5,042,721	4.5%	\$22,901	0.45%
Pick 3 Sum It Up	\$97,731	0.1%	\$100,612	0.1%	-\$2,881	-2.86%
Cash Five	\$796,149	0.7%	\$809,462	0.7%	-\$13,313	-1.64%
Texas Two Step	\$1,154,601	1.0%	\$898,361	0.8%	\$256,240	28.52%
Mega Millions	\$3,256,120	2.9%	\$3,000,526	2.7%	\$255,594	8.52%
Megaplier	\$527,004	0.5%	\$498,419	0.4%	\$28,585	5.74%
MM Just the Jackpot	\$22,452	0.0%	\$21,834	0.0%	\$618	2.83%
Daily 4	\$2,093,575	1.9%	\$2,112,468	1.9%	-\$18,893	-0.89%
Daily 4 Sum It Up	\$107,072	0.1%	\$108,642	0.1%	-\$1,570	-1.45%
Powerball	\$4,252,487	3.8%	\$4,061,812	3.6%	\$190,675	4.69%
Power Play	\$661,592	0.6%	\$643,197	0.6%	\$18,395	2.86%
All or Nothing	\$542,776	0.5%	\$552,824	0.5%	-\$10,048	-1.82%
Texas Triple Chance	\$200,746	0.2%	\$204,200	0.2%	-\$3,454	-1.69%
Total Draw Game Sales	<u>\$21,876,449</u>		<u>\$21,175,937</u>		<u>\$700,513</u>	3.31%

\* Totals may not sum due to rounding.

**Texas Lottery Commission  
Weekly Sales Summary  
Unaudited**

**SCRATCH TICKETS  
TOP TEN SELLING GAMES**

**For the week ending: 4/28/2018**

<b>Rank</b>	<b>Price Point</b>	<b>Game</b>	<b>Sales (Millions)</b>
1	\$ 30	\$750 MILLION WINNER'S CIRCLE	\$ 5.676
2	\$ 20	100X THE CASH	\$ 4.943
3	\$ 10	MEGA LOTERIA	\$ 4.748
4	\$ 5	20X THE CASH	\$ 4.486
5	\$ 5	SUPER LOTERIA	\$ 3.850
6	\$ 50	ULTIMATE 7'S	\$ 3.775
7	\$ 20	MEGA 7'S	\$ 3.327
8	\$ 10	SUPER 7'S	\$ 3.296
9	\$ 10	\$250,000 CASH WINFALL	\$ 2.652
10	\$ 20	\$100 MILLION TEXAS RICHES	\$ 2.640

**Texas Lottery Commission  
Prize Payout Tracking Report  
Unaudited**

Through the week ending: 4/28/2018

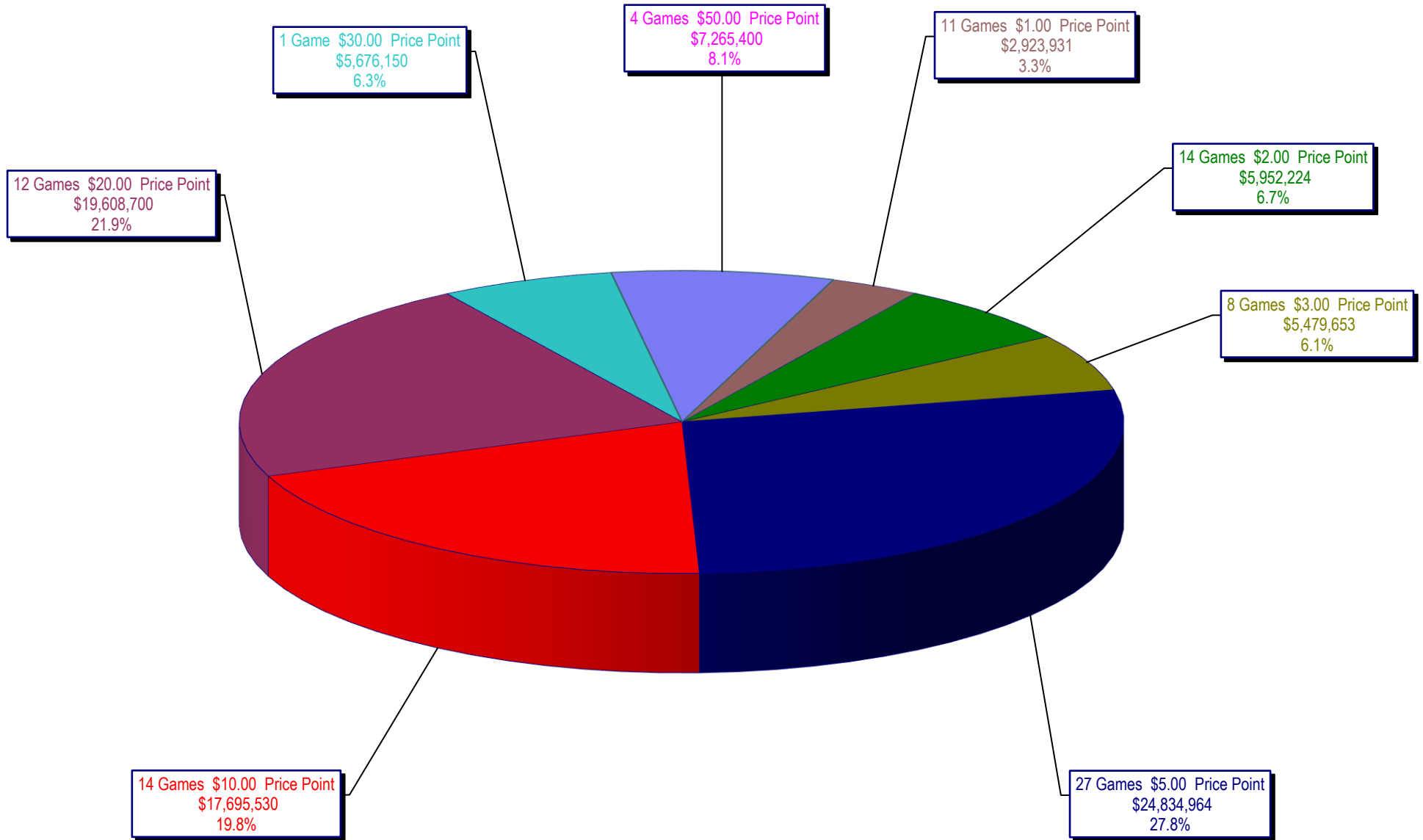
**Draw Game Sales**

		FY Sales Through Week Ending 4/28/2018		FY Prize Expense Through Week Ending 4/28/2018	Actual* Prize Payout	Base Payout (Prize Pool)
Lotto	\$	77,270,428	\$	44,262,754	57.28%	50.00%
Lotto Extra		16,997,436		9,496,320	55.87%	53.70%
Pick 3		169,190,404		83,607,640	49.42%	50.00%
Pick 3 Sum It Up		3,378,984		1,548,106	45.82%	50.00%
Cash Five		28,121,496		14,060,928	50.00%	50.00%
Texas Two Step		35,206,155		17,509,965	49.74%	50.00%
Mega Millions		141,815,461		74,276,889	52.38%	50.00%**
Megaplier		23,053,824		11,691,063	50.71%	N/A
MM Just the Jackpot		1,141,026		569,616	49.92%	50.00%**
Daily 4		71,242,876		37,197,250	52.21%	50.00%
Daily 4 Sum It Up		3,843,842		1,509,824	39.28%	50.00%
Powerball		182,784,100		91,561,583	50.09%	50.00%**
Power Play		27,059,092		13,559,091	50.11%	N/A
All or Nothing		19,269,035		11,483,326	59.59%	55.98%
Texas Triple Chance		8,220,857		4,033,779	49.07%	54.42%
<b>Totals</b>	<b>\$</b>	<b>808,595,015</b>	<b>\$</b>	<b>416,368,133</b>	<b>51.49%</b>	

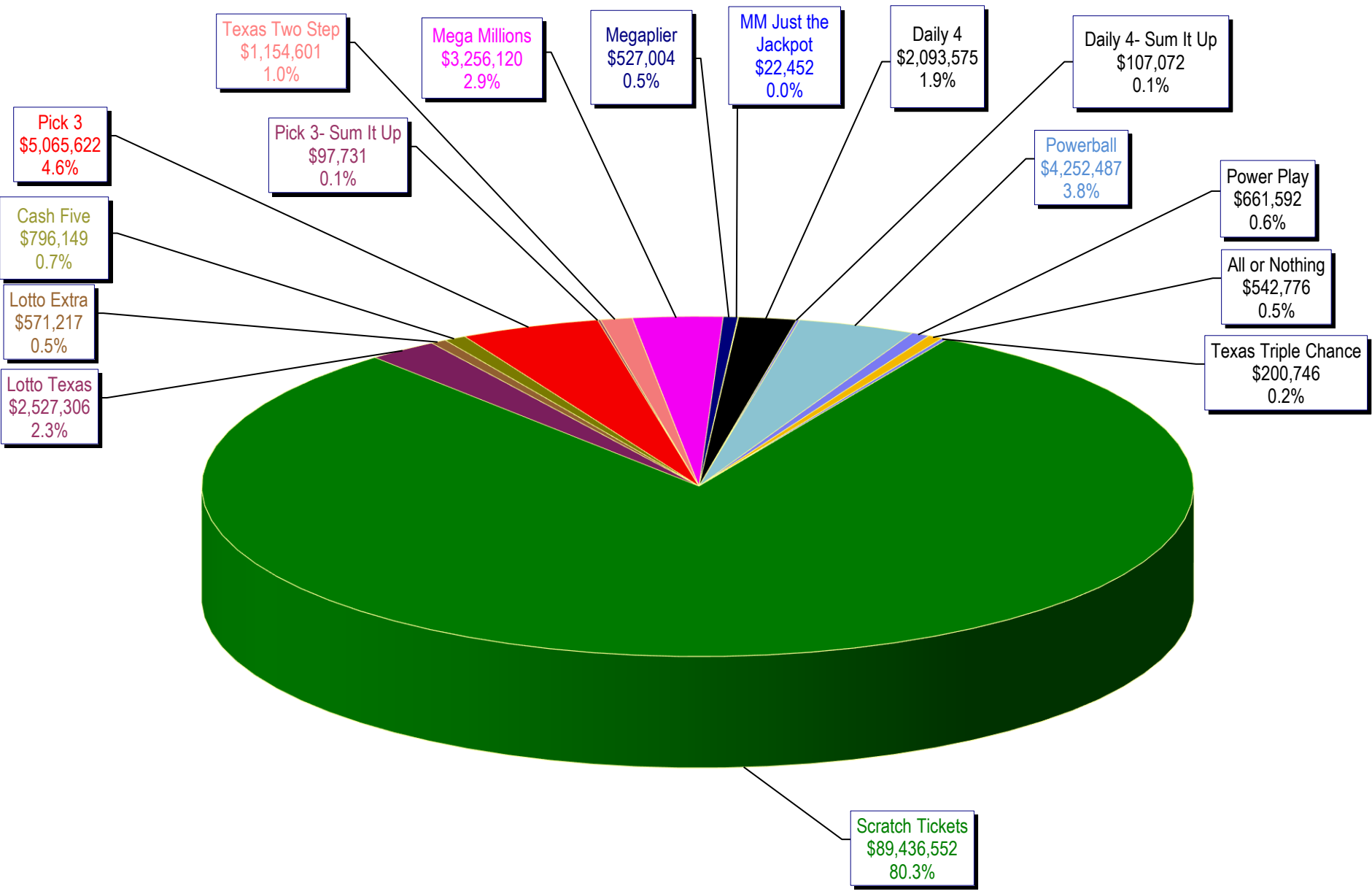
\* Before Unclaimed Prizes

\*\*Estimated; depends on # of guaranteed prizes won in Texas

Texas Lottery Commission  
Scratch Ticket Sales  
For the week ending 4/28/2018  
(Unaudited)



**Texas Lottery Commission**  
**All Game Sales**  
**For the week ending 4/28/2018**  
**(Unaudited)**



Week Ended	Scratch Tickets	New Games & Dates	Lotto Texas	Jackpot W	S	Lotto Extra	Pick 3	Pick 3 Sum It Up	Cash Five	Texas Two Step	Jackpot M	7H	Mega Millions	Jackpot F	Megaplier	MM Just the Jackpot	Daily 4	Daily 4 Sum It Up	Powerball	Jackpot W	S	Power Play	All or Nothing	Texas Triple Chance	Total	Per Cap.	
9/2/2017	66,786,499	0	1,882,138	7.75	8	407,969	4,127,448	87,462	745,315	757,964	225	250	1,839,333	45	53	546,532	1,675,002	88,460	3,160,562	53	68	527,201	510,296	226,818	83,368,998	2.99	
9/9/2017	71,784,232	1894 (\$1.N); 1895 (\$3.N); 1896 (\$5.N); 1897 (\$10.N); 1898 (\$20.N) - 9/05/17	2,030,456	8.25	9	434,404	4,673,693	94,976	810,225	814,157	200	225	2,116,454	61	70	610,101	1,864,288	98,842	3,815,824	83	102	614,504	550,992	250,086	90,563,233	3.25	
9/16/2017	72,828,393	0	2,072,973	9.5	10.25	441,815	4,761,239	95,825	803,128	1,009,847	275	400	2,218,181	76	86	632,423	1,969,938	107,496	4,120,318	115	132	647,273	549,860	248,976	92,507,685	3.32	
9/23/2017	71,147,147	2000 (\$5.N); 1885 (\$10.N) - 9/18/17	2,083,698	10.75	11.5	444,009	4,652,157	91,944	799,261	958,113	550	200	2,417,135	94	104	676,790	1,999,292	111,399	3,062,637	40	53	505,638	554,074	245,596	89,748,889	3.22	
9/30/2017	74,749,619	0	2,123,157	12	12.75	453,258	4,787,745	93,462	817,582	914,011	225	300	1,798,854	15	20	540,169	2,140,708	114,176	3,298,744	66	80	535,906	567,658	251,252	93,186,301	3.34	
10/7/2017	78,134,381	1857 (\$1.N); 1871 (\$5.N); 2002 (\$20.N) - 10/02/17	2,158,233	13.5	14	461,982	4,884,513	93,622	837,916	1,157,363	425	575	1,859,000	25	30	555,420	2,086,885	112,246	3,678,352	94	112	585,624	570,242	255,884	97,431,662	3.50	
10/14/2017	74,084,207	0	2,161,597	14.75	15.5	460,731	4,743,121	91,735	812,165	832,638	200	225	1,899,412	36	43	564,073	2,060,922	109,910	4,013,728	128	143	621,796	564,614	248,894	93,269,542	3.35	
10/21/2017	77,631,892	2003 (\$2.N); 2004 (\$5.N); 1899 (\$50.N) - 10/18/17	2,191,085	16	16.75	466,612	4,682,503	94,156	810,073	1,008,511	300	425	1,677,423	15	20	505,340	2,117,469	116,022	4,422,740	156	173	670,007	563,200	248,496	97,205,528	3.49	
10/28/2017	76,385,130	0	2,227,162	17.25	18.25	475,194	4,854,638	92,765	797,066	786,381	200	200	1,737,391	25	30	493,983	2,297,114	121,467	3,852,082	191	40	595,303	547,396	240,638	95,173,764	3.42	
11/4/2017	78,814,323	0	2,333,965	18.75	19.25	494,349	4,926,697	96,245	820,269	887,674	225	275	2,753,000	40	48	421,360	112,668	2,205,239	3,078,822	52	64	500,061	571,658	248,038	98,378,952	3.53	
11/11/2017	78,572,697	2005 (\$1.N); 2006 (\$3.N); 2007 (\$5.N); 2008 (\$10.N) - 11/06/17	2,315,922	19.75	20.5	490,024	4,901,274	94,521	817,975	894,972	400	200	2,652,012	59	71	410,066	62,832	2,069,360	3,183,712	75	90	507,890	563,738	242,264	97,890,137	3.51	
11/18/2017	81,674,704	2085 (\$2.N); 1891 (\$5.N); 2011 (\$10.N) - 11/15/17	2,379,541	21.25	21.75	504,693	4,782,395	93,156	818,168	882,520	225	275	2,820,440	82	95	433,282	53,445	2,053,707	3,638,718	103	119	564,829	562,306	242,322	101,612,705	3.65	
11/25/2017	84,916,870	0	2,353,671	22.5	23.25	504,985	4,590,443	87,556	779,967	1,056,541	400	525	2,980,136	106	119	452,693	45,225	1,908,926	3,780,406	134	149	582,194	522,808	223,942	104,885,393	3.76	
12/2/2017	81,453,005	1862 (\$5.N) - 11/29/17	2,485,060	24	24.75	527,939	4,873,294	92,503	822,515	1,037,952	700	200	3,461,973	132	145	516,938	45,540	2,057,256	4,218,618	163	177	638,061	556,758	239,766	103,138,180	3.70	
12/9/2017	81,251,421	2019 (\$1.N); 2010 (\$5.N); 2014 (\$20.N) - 12/04/17	1,889,914	5	5	412,797	4,711,132	88,700	815,769	867,201	225	275	3,625,922	160	176	538,523	45,915	2,019,801	4,674,778	193	212	693,130	546,064	235,350	102,528,526	3.68	
12/16/2017	83,850,250	1877 (\$5.N) - 12/11/17	1,956,432	5.25	5.5	429,971	4,788,793	92,152	818,587	899,138	400	200	4,204,546	191	208	610,115	45,642	2,099,981	5,539,284	229	250	809,986	551,440	237,436	107,050,047	3.84	
12/23/2017	87,941,872	1879 (\$2.N); 2013 (\$5.N) - 12/18/17	2,124,516	5	5.25	469,230	4,942,394	97,078	837,255	918,506	225	275	5,341,776	223	253	751,656	48,156	2,180,958	7,471,900	269	300	1,054,970	557,540	245,096	115,103,496	4.13	
12/30/2017	88,089,746	0	2,360,842	5.5	5.75	519,750	4,652,815	94,254	811,994	1,034,373	400	550	8,764,544	277	306	1,147,310	65,076	2,060,790	119,090	12,711,198	337	384	1,676,130	555,378	237,816	124,901,105	4.48
1/6/2018	85,627,935	2012 (\$1.N); 2016 (\$3.N); 2020 (\$5.N); 2018 (\$10.N); 2021 (\$20.N) - 1/02/18	2,549,259	6	6.25	569,992	4,638,623	101,857	819,523	806,400	200	225	17,181,579	361	450	2,125,075	99,750	1,971,281	118,574	26,448,160	460	570	3,306,119	536,082	250,152	147,150,359	5.28
1/13/2018	84,788,310	2078 (\$2.N) - 1/10/18	2,040,927	6.5	6.75	448,742	4,766,520	102,572	825,080	1,089,485	300	425	2,922,316	40	45	466,464	29,142	1,999,808	3,619,230	40	50	576,948	559,134	240,066	104,586,004	3.75	
1/20/2018	79,736,335	1874 (\$2.N); 2023 (\$5.N) - 01/15/18	1,966,838	7	7.25	435,886	4,577,006	94,097	795,104	1,022,928	600	200	2,755,698	50	55	444,651	27,351	1,874,998	3,508,516	62	78	562,582	531,264	231,646	98,664,694	3.54	
1/27/2018	84,274,095	0	2,035,827	7.5	7.75	453,370	4,700,198	94,322	814,607	930,734	225	300	3,019,030	63	76	484,896	26,847	2,022,100	3,921,400	92	112	620,657	563,096	238,566	104,305,566	3.74	
2/3/2018	86,988,911	0	2,109,623	8.25	9	472,504	5,142,594	103,765	837,769	1,260,482	425	575	3,268,918	89	104	523,436	28,656	2,142,446	5,349,986	127	145	683,141	575,884	242,220	108,846,566	3.91	
2/10/2018	89,937,200	1622 (\$1.N); 2025 (\$5.N); 1884 (\$20.N) - 02/05/18	2,111,426	9.5	10.25	471,879	5,202,565	103,949	834,193	1,760,463	750	975	3,471,268	120	136	548,853	28,242	2,104,711	5,169,909	4,522,707	165	184	701,337	568,804	240,106	112,724,611	4.05
2/17/2018	87,786,021	0	2,179,635	11	11.75	485,269	5,328,504	110,653	829,413	1,385,566	1,225	200	3,768,869	153	168	581,183	29,718	2,101,483	5,169,501	203	223	780,285	561,011	235,428	111,424,697	4.00	

Texas Lottery Commission - Weekly Sales Summary for FY 2018 (Unaudited)

Week Ended	Scratch Tickets	New Games & Dates	Lotto Texas	Jackpot W	S	Lotto Extra	Pick 3	Pick 3 Sum It Up	Cash Five	Texas Two Step	Jackpot M	7H	Mega Millions	Jackpot T	F	Megaplier	MM Just the Jackpot	Daily 4	Daily 4 Sum It Up	Powerball	Jackpot W	S	Power Play	All or Nothing	Texas Triple Chance	Total	Per Cap.	
2/24/2018	90,755,793	2029 (\$2.N); 2029 (\$5.N); 2030 (\$50.N) - 02/19/18	2,147,662	12.25	13	483,804	5,191,795	105,127	816,514	933,192	225	300	3,912,974	185	204	599,464	29,316	2,092,759	112,471	5,417,554	246	269	812,503	567,576	234,680	114,213,183	4.10	
3/3/2018	98,824,633	0	2,307,102	13.75	14.5	523,709	5,663,255	118,728	859,761	911,212	200	225	4,653,007	222	243	697,471	30,489	2,322,805	124,062	6,499,211	293	321	956,418	606,052	253,407	125,351,321	4.50	
3/10/2018	94,905,657	2024 (\$1.N); 2033 (\$5.N); 2026 (\$10.N) - 03/05/18	2,333,008	15	15.75	529,262	5,407,567	109,792	846,315	1,119,036	325	475	5,087,864	265	290	752,000	32,994	2,211,865	122,015	7,510,400	348	385	1,074,892	597,680	247,282	122,887,628	4.41	
3/17/2018	91,348,015	2081 (\$3.N) - 03/15/18	2,398,123	16.5	17.25	547,944	5,121,425	103,955	822,331	862,079	200	225	6,178,840	318	345	897,270	35,697	2,079,060	110,881	9,609,522	420	455	1,349,420	572,372	237,808	122,274,741	4.39	
3/24/2018	93,810,063	1893 (\$2.N); 2036 (\$5.N); 1847 (\$10.N); 2053 (\$30.N) - 03/19/18	2,326,950	17.75	18.75	528,957	5,073,987	101,683	821,240	1,109,203	300	450	7,088,125	377	421	1,017,710	42,654	2,060,642	106,556	3,298,651	40	54	546,955	569,704	231,612	118,734,692	4.26	
3/31/2018	99,679,358	0	2,472,349	19.25	19.75	565,392	5,112,207	101,418	819,005	1,577,706	600	775	13,236,122	458	521	1,801,269	66,543	2,085,613	107,238	3,594,448	40	50	590,385	566,564	232,256	132,607,872	4.76	
4/7/2018	94,700,487	2037 (\$1.N); 2038 (\$5.N); 2047 (\$20.N) - 04/02/18	2,531,649	20.5	21.5	572,972	5,314,222	105,741	845,930	1,364,381	1,025	200	2,912,015	40	45	489,021	20,670	2,151,945	114,547	3,250,710	60	74	540,670	583,668	240,820	115,739,446	4.15	
4/14/2018	92,913,454	0	2,554,459	22.25	23	576,862	5,171,368	103,450	827,885	999,156	225	325	2,972,975	50	55	498,501	21,201	2,119,256	109,968	3,670,466	89	106	597,000	570,640	232,776	113,939,416	4.09	
4/21/2018	91,480,306	2054 (\$2.N); 2045 (\$5.N) - 04/16/18	2,544,267	24	24.75	576,593	5,042,721	100,612	809,462	898,361	200	225	3,000,526	67	80	498,419	21,834	2,112,468	108,642	4,061,812	122	142	643,197	552,824	204,200	112,656,242	4.04	
4/28/2018	89,436,552	0	2,527,306	25.75	26.75	571,217	5,065,622	97,731	796,149	1,154,601	325	450	3,256,120	96	111	527,004	22,452	2,093,575	107,072	4,252,487	158	177	661,592	542,776	200,746	111,313,001	4.00	
weekly change	-2.2%		-0.7%			-0.9%	-0.5%	-2.9%	-1.6%	28.5%			8.5%			5.7%	2.8%	-0.9%	-1.4%	4.7%			2.9%	-1.8%	-1.7%	-1.2%		
	<b>SALES</b>		<b>SALES</b>	<b>SALES</b>	<b>SALES</b>	<b>SALES</b>	<b>SALES</b>	<b>SALES</b>	<b>SALES</b>	<b>SALES</b>	<b>SALES</b>	<b>SALES</b>	<b>SALES</b>	<b>SALES</b>	<b>SALES</b>	<b>SALES</b>	<b>SALES</b>	<b>SALES</b>	<b>SALES</b>	<b>SALES</b>	<b>SALES</b>	<b>SALES</b>	<b>SALES</b>	<b>SALES</b>	<b>SALES</b>	<b>SALES</b>	<b>SALES</b>	<b>% of Sales</b>
Calendar Year to date 2018	1,526,231,660		39,031,802			8,792,255	88,360,069	1,755,449	13,972,598	19,095,248			88,171,110			12,888,561	590,283	35,467,958	1,899,362	102,042,429			14,921,034	9,594,229	3,979,871	1,964,793,916	100.0%	
Fiscal Year to date 2018	2,903,361,939		77,270,428			16,997,436	169,190,404	3,378,984	28,121,496	35,206,155			141,815,461			23,053,824	1,141,026	71,242,876	3,843,842	182,784,100			27,059,092	19,269,035	8,220,857	3,711,956,954	100.0%	

\*Full week includes 5 days from FY17