



WEEKLY SALES SUMMARY

Unaudited

Week Ending: 4/29/2017

Texas Lottery Commission
Fiscal Year to Date Sales Comparison
Unaudited

Through the Week Ending 4/29/2017 (35 Weeks)

| Sales by Game | FY 2015 * | FY 2016 ** | FY 2017 | \$ Change | | % Change | |
|---------------------|-------------------------|-------------------------|-------------------------|-----------------------|------------------------|-----------------------|-----------------------|
| | | | | FY 2017 to FY 2015 | FY 2017 to FY 2016 | FY 2017 to FY 2015 | FY 2017 to FY 2016 |
| Scratch Tickets | \$ 2,335,677,176 | \$ 2,484,338,086 | \$ 2,596,617,745 | \$ 260,940,569 | \$ 112,279,659 | 11.2% | 4.5% |
| Lotto Texas | 82,498,612 | 83,494,715 | 76,009,302 | -6,489,310 | -7,485,413 | -7.9% | -9.0% |
| Lotto Extra | 12,797,706 | 14,558,670 | 14,844,906 | 2,047,200 | 286,236 | 16.0% | 2.0% |
| Pick 3 | 170,657,821 | 171,445,785 | 166,943,157 | -3,714,664 | -4,502,628 | -2.2% | -2.6% |
| Pick 3 Sum It Up | 3,435,500 | 3,512,443 | 3,194,725 | -240,776 | -317,718 | -7.0% | -9.0% |
| Cash Five | 33,946,961 | 31,227,281 | 29,247,343 | -4,699,618 | -1,979,938 | -13.8% | -6.3% |
| Texas Two Step | 35,682,758 | 36,116,591 | 36,739,979 | 1,057,221 | 623,388 | 3.0% | 1.7% |
| Mega Millions | 101,863,017 | 83,579,816 | 75,441,285 | -26,421,732 | -8,138,531 | -25.9% | -9.7% |
| Megaplier | 23,792,794 | 21,311,359 | 20,485,986 | -3,306,808 | -825,373 | -13.9% | -3.9% |
| Daily 4 | 58,529,880 | 60,443,875 | 62,898,125 | 4,368,245 | 2,454,250 | 7.5% | 4.1% |
| Daily 4 Sum It Up | 3,414,540 | 3,195,849 | 3,396,767 | -17,774 | 200,918 | -0.5% | 6.3% |
| Powerball | 152,433,352 | 356,350,818 | 151,587,009 | -846,343 | -204,763,809 | -0.6% | -57.5% |
| Power Play | 18,837,431 | 39,530,427 | 21,489,448 | 2,652,017 | -18,040,979 | 14.1% | -45.6% |
| All or Nothing | 26,175,822 | 20,930,264 | 19,240,964 | -6,934,858 | -1,689,300 | -26.5% | -8.1% |
| Monopoly | 1 2,656,370 | - | - | -2,656,370 | - | -100.0% | - |
| Texas Triple Chance | - | 17,316,382 | 9,994,316 | 9,994,316 | -7,322,066 | - | -42.3% |
| Total | \$ 3,062,399,740 | \$ 3,427,352,360 | \$ 3,288,131,056 | \$ 225,731,316 | \$ -139,221,305 | 7.4% | -4.1% |

* 3 extra days

** 2 extra days

1 Monopoly sales were suspended after draw on 12/12/14

Texas Lottery Commission
Fiscal Year to Date Cumulative Average Sales Comparison
Unaudited

Through the Week Ending 4/29/2017 (35 Weeks)

| Sales by Game | FY 2015 | FY 2016 | FY 2017 |
|---------------------|----------------------|----------------------|----------------------|
| Scratch Tickets | \$ 9,572,447 | \$ 10,223,614 | \$ 10,774,347 |
| Lotto Texas | 338,109 | 343,600 | 315,391 |
| Lotto Extra | 52,450 | 59,912 | 61,597 |
| Pick 3 | 699,417 | 705,538 | 692,710 |
| Pick 3 Sum It Up | 14,080 | 14,454 | 13,256 |
| Cash Five | 139,127 | 128,507 | 121,358 |
| Texas Two Step | 146,241 | 148,628 | 152,448 |
| Mega Millions | 417,471 | 343,950 | 313,034 |
| Megaplier | 97,511 | 87,701 | 85,004 |
| Daily 4 | 239,877 | 248,740 | 260,988 |
| Daily 4 Sum It Up | 13,994 | 13,152 | 14,094 |
| Powerball | 624,727 | 1,466,464 | 628,992 |
| Power Play | 77,203 | 162,677 | 89,168 |
| All or Nothing | 107,278 | 86,133 | 79,838 |
| Monopoly | ** 48,298 | - | - |
| Texas Triple Chance | - * | 79,799 | 41,470 |
| Total | \$ 12,588,229 | \$ 14,112,869 | \$ 13,643,697 |

thru 5/02/2015

thru 4/30/2016

thru 4/29/2017

244 days

243 days

241 days

** 55 days

* 217 days

Texas Lottery Commission
Fiscal Year Over Year Change in Sales
Unaudited
FY 2017 Compared to FY 2016

| | | | SCRATCH TICKETS | | | | DRAW GAMES | | | | TOTAL SALES | | | |
|---------|------------|--------|-----------------|--------------|----------------|------------------|--------------|---------------|-----------------|------------------|---------------|---------------|-----------------|------------------|
| FY 2017 | | | % change - | | | | % change - | | | | % change - | | | |
| Week | Week | Ending | FY 2017 | FY 2016 | Difference | Cumulative Sales | FY 2017 | FY 2016 | Difference | Cumulative Sales | FY 2017 | FY 2016 | Difference | Cumulative Sales |
| 1 | 9/3/2016 * | | \$32,980,266 | \$49,534,249 | (\$16,553,983) | -33.4% | \$10,218,656 | \$17,091,724 | (\$6,873,068) | -40.2% | \$43,198,922 | \$66,625,973 | (\$23,427,051) | -35.2% |
| 2 | 9/10/2016 | | \$65,952,418 | \$61,566,291 | \$4,386,127 | 7.1% | \$19,635,377 | \$20,630,922 | (\$995,545) | -4.8% | \$85,587,795 | \$82,197,213 | \$3,390,583 | 4.1% |
| 3 | 9/17/2016 | | \$66,196,270 | \$63,530,657 | \$2,665,613 | 4.2% | \$20,915,290 | \$20,327,253 | \$588,037 | 2.9% | \$87,111,560 | \$83,857,910 | \$3,253,650 | 3.9% |
| 4 | 9/24/2016 | | \$64,383,005 | \$61,731,400 | \$2,651,605 | 4.3% | \$17,451,165 | \$22,252,290 | (\$4,801,125) | -21.6% | \$81,834,170 | \$83,983,690 | (\$2,149,520) | -2.6% |
| 5 | 10/1/2016 | | \$67,349,951 | \$67,048,415 | \$301,536 | 0.4% | \$17,519,852 | \$25,436,791 | (\$7,916,939) | -31.1% | \$84,869,803 | \$92,485,206 | (\$7,615,403) | -8.2% |
| 6 | 10/8/2016 | | \$71,598,690 | \$66,049,706 | \$5,548,984 | 8.4% | \$18,211,107 | \$18,138,977 | \$72,130 | 0.4% | \$89,809,797 | \$84,188,683 | \$5,621,114 | 6.7% |
| 7 | 10/15/2016 | | \$69,444,762 | \$65,073,593 | \$4,371,169 | 6.7% | \$18,075,261 | \$17,776,414 | \$298,847 | 1.7% | \$87,520,023 | \$82,850,007 | \$4,670,016 | 5.6% |
| 8 | 10/22/2016 | | \$69,317,066 | \$64,087,437 | \$5,229,629 | 8.2% | \$18,422,336 | \$18,450,464 | (\$28,128) | -0.2% | \$87,739,402 | \$82,537,901 | \$5,201,501 | 6.3% |
| 9 | 10/29/2016 | | \$69,729,599 | \$66,025,374 | \$3,704,225 | 5.6% | \$18,535,248 | \$19,568,150 | (\$1,032,902) | -5.3% | \$88,264,847 | \$85,593,524 | \$2,671,324 | 3.1% |
| 10 | 11/5/2016 | | \$73,451,702 | \$68,137,192 | \$5,314,510 | 7.8% | \$20,151,939 | \$20,398,351 | (\$246,413) | -1.2% | \$93,603,641 | \$88,535,543 | \$5,068,098 | 5.7% |
| 11 | 11/12/2016 | | \$70,998,320 | \$65,449,428 | \$5,548,892 | 8.5% | \$19,925,460 | \$20,169,382 | (\$243,923) | -1.2% | \$90,923,780 | \$85,618,810 | \$5,304,970 | 6.2% |
| 12 | 11/19/2016 | | \$75,265,196 | \$68,364,421 | \$6,900,775 | 10.1% | \$21,424,637 | \$17,174,606 | \$4,250,031 | 24.7% | \$96,689,833 | \$85,539,027 | \$11,150,806 | 13.0% |
| 13 | 11/26/2016 | | \$68,983,157 | \$61,091,628 | \$7,891,529 | 12.9% | \$24,223,331 | \$17,168,993 | \$7,054,338 | 41.1% | \$93,206,488 | \$78,260,621 | \$14,945,867 | 19.1% |
| 14 | 12/3/2016 | | \$72,688,514 | \$67,830,827 | \$4,857,687 | 7.2% | \$17,653,328 | \$19,252,418 | (\$1,599,090) | -8.3% | \$90,341,842 | \$87,083,245 | \$3,258,597 | 3.7% |
| 15 | 12/10/2016 | | \$71,676,549 | \$68,324,452 | \$3,352,097 | 4.9% | \$18,150,590 | \$19,529,408 | (\$1,378,819) | -7.1% | \$89,827,139 | \$87,853,860 | \$1,973,279 | 2.2% |
| 16 | 12/17/2016 | | \$73,909,726 | \$71,041,258 | \$2,868,468 | 4.0% | \$19,814,333 | \$20,824,840 | (\$1,010,507) | -4.9% | \$93,724,059 | \$91,866,098 | \$1,857,962 | 2.0% |
| 17 | 12/24/2016 | | \$77,369,179 | \$78,125,965 | (\$756,786) | -1.0% | \$19,276,415 | \$22,586,417 | (\$3,310,002) | -14.7% | \$96,645,594 | \$100,712,382 | (\$4,066,788) | -4.0% |
| 18 | 12/31/2016 | | \$80,868,854 | \$76,712,975 | \$4,155,879 | 5.4% | \$19,289,161 | \$27,972,880 | (\$8,683,720) | -31.0% | \$100,158,015 | \$104,685,855 | (\$4,527,841) | -4.3% |
| 19 | 1/7/2017 | | \$73,328,624 | \$77,136,541 | (\$3,807,917) | -4.9% | \$18,611,644 | \$127,289,478 | (\$108,677,835) | -85.4% | \$91,940,268 | \$204,426,019 | (\$112,485,752) | -55.0% |
| 20 | 1/14/2017 | | \$73,471,643 | \$73,858,865 | (\$387,222) | -0.5% | \$20,351,397 | \$140,104,126 | (\$119,752,729) | -85.5% | \$93,823,040 | \$213,962,991 | (\$120,139,951) | -56.1% |
| 21 | 1/21/2017 | | \$72,229,342 | \$70,665,700 | \$1,563,642 | 2.2% | \$20,349,310 | \$20,781,745 | (\$432,435) | -2.1% | \$92,578,652 | \$91,447,445 | \$1,131,208 | 1.2% |
| 22 | 1/28/2017 | | \$72,056,793 | \$71,051,685 | \$1,005,108 | 1.4% | \$21,668,657 | \$20,433,401 | \$1,235,257 | 6.0% | \$93,725,450 | \$91,485,086 | \$2,240,365 | 2.4% |
| 23 | 2/4/2017 | | \$77,292,806 | \$78,458,428 | (\$1,165,622) | -1.5% | \$22,161,789 | \$21,274,800 | \$886,989 | 4.2% | \$99,454,595 | \$99,733,228 | (\$278,634) | -0.3% |
| 24 | 2/11/2017 | | \$78,699,192 | \$80,754,850 | (\$2,055,658) | -2.5% | \$22,100,245 | \$21,391,919 | \$708,326 | 3.3% | \$100,799,437 | \$102,146,769 | (\$1,347,332) | -1.3% |
| 25 | 2/18/2017 | | \$77,864,124 | \$80,078,271 | (\$2,214,147) | -2.8% | \$24,776,465 | \$21,911,382 | \$2,865,083 | 13.1% | \$102,640,589 | \$101,989,653 | \$650,936 | 0.6% |
| 26 | 2/25/2017 | | \$80,287,015 | \$78,832,217 | \$1,454,798 | 1.8% | \$28,133,116 | \$22,823,086 | \$5,310,031 | 23.3% | \$108,420,131 | \$101,655,303 | \$6,764,829 | 6.7% |
| 27 | 3/4/2017 | | \$87,500,184 | \$80,019,524 | \$7,480,660 | 9.3% | \$20,213,859 | \$23,146,906 | (\$2,933,047) | -12.7% | \$107,714,043 | \$103,166,430 | \$4,547,613 | 4.4% |
| 28 | 3/11/2017 | | \$84,966,053 | \$78,524,214 | \$6,441,839 | 8.2% | \$21,024,757 | \$19,311,625 | \$1,713,132 | 8.9% | \$105,990,810 | \$97,835,839 | \$8,154,971 | 8.3% |
| 29 | 3/18/2017 | | \$82,972,977 | \$75,446,960 | \$7,526,017 | 10.0% | \$20,434,291 | \$18,001,000 | \$2,433,292 | 13.5% | \$103,407,268 | \$93,447,960 | \$9,959,309 | 10.7% |
| 30 | 3/25/2017 | | \$82,217,628 | \$75,293,759 | \$6,923,869 | 9.2% | \$20,282,992 | \$18,553,964 | \$1,729,028 | 9.3% | \$102,500,620 | \$93,847,723 | \$8,652,897 | 9.2% |
| 31 | 4/1/2017 | | \$86,271,920 | \$79,316,221 | \$6,955,699 | 8.8% | \$19,497,142 | \$19,482,563 | \$14,580 | 0.1% | \$105,769,062 | \$98,798,784 | \$6,970,279 | 7.1% |
| 32 | 4/8/2017 | | \$81,499,404 | \$74,560,898 | \$6,938,506 | 9.3% | \$17,854,294 | \$20,100,629 | (\$2,246,336) | -11.2% | \$99,353,698 | \$94,661,527 | \$4,692,171 | 5.0% |
| 33 | 4/15/2017 | | \$81,831,134 | \$74,056,586 | \$7,774,548 | 10.5% | \$17,865,636 | \$20,677,413 | (\$2,811,777) | -13.6% | \$99,696,770 | \$94,733,999 | \$4,962,771 | 5.2% |
| 34 | 4/22/2017 | | \$80,531,863 | \$73,110,080 | \$7,421,783 | 10.2% | \$18,337,257 | \$20,313,339 | (\$1,976,082) | -9.7% | \$98,869,120 | \$93,423,419 | \$5,445,702 | 5.8% |
| 35 | 4/29/2017 | | \$81,433,819 | \$73,448,019 | \$7,985,800 | 10.9% | \$18,956,981 | \$22,666,626 | (\$3,709,646) | -16.4% | \$100,390,800 | \$96,114,645 | \$4,276,155 | 4.4% |
| 36 | 5/6/2017 | | | \$77,593,399 | | | | \$33,262,968 | | | | \$110,856,367 | | |
| 37 | 5/13/2017 | | | \$75,263,676 | | | | \$20,250,149 | | | | \$95,513,825 | | |
| 38 | 5/20/2017 | | | \$74,274,808 | | | | \$19,605,983 | | | | \$93,880,791 | | |
| 39 | 5/27/2017 | | | \$71,562,728 | | | | \$20,150,232 | | | | \$91,712,960 | | |
| 40 | 6/3/2017 | | | \$73,085,109 | | | | \$21,067,550 | | | | \$94,152,659 | | |
| 41 | 6/10/2017 | | | \$70,593,768 | | | | \$21,389,794 | | | | \$91,983,562 | | |
| 42 | 6/17/2017 | | | \$69,501,864 | | | | \$22,402,713 | | | | \$91,904,577 | | |

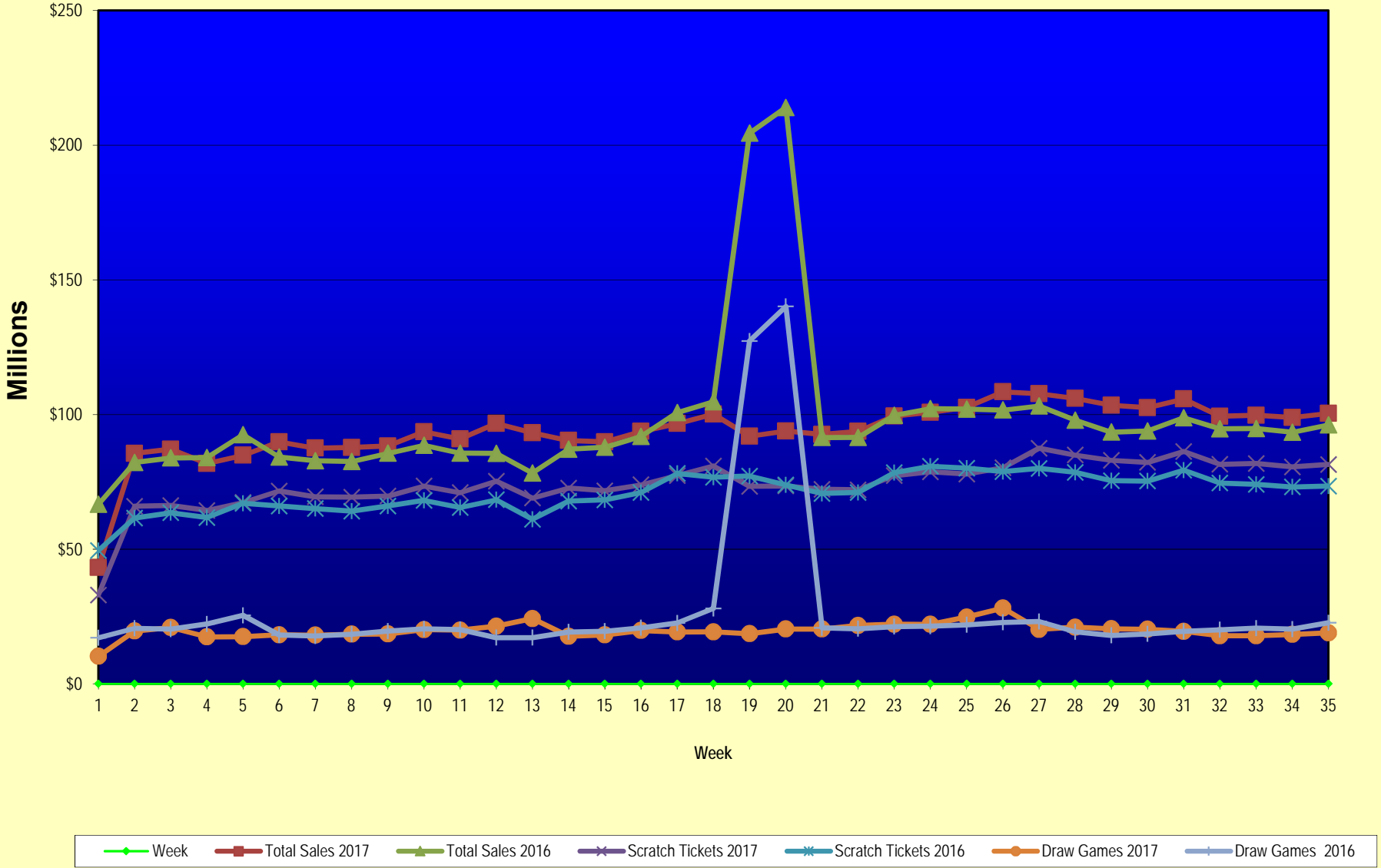
Texas Lottery Commission
Fiscal Year Over Year Change in Sales
Unaudited
FY 2017 Compared to FY 2016

| | | | SCRATCH TICKETS | | | | DRAW GAMES | | | | TOTAL SALES | | | |
|-------------------------|--------------|--------|-----------------|-----------------|---------------|--------------------------------|---------------|-----------------|-----------------|--------------------------------|-----------------|-----------------|-----------------|--------------------------------|
| FY 2017 | | | | | | | | | | | | | | |
| Week | Week | Ending | FY 2017 | FY 2016 | Difference | % change - Cumulative Sales | FY 2017 | FY 2016 | Difference | % change - Cumulative Sales | FY 2017 | FY 2016 | Difference | % change - Cumulative Sales |
| 43 | 6/24/2017 | | | \$69,243,660 | | | | \$24,290,311 | | | | \$93,533,971 | | |
| 44 | 7/1/2017 | | | \$70,782,313 | | | | \$29,331,406 | | | | \$100,113,719 | | |
| 45 | 7/8/2017 | | | \$67,636,625 | | | | \$38,673,314 | | | | \$106,309,939 | | |
| 46 | 7/15/2017 | | | \$68,064,720 | | | | \$21,311,938 | | | | \$89,376,658 | | |
| 47 | 7/22/2017 | | | \$69,509,821 | | | | \$21,982,689 | | | | \$91,492,510 | | |
| 48 | 7/29/2017 | | | \$64,486,970 | | | | \$30,699,953 | | | | \$95,186,923 | | |
| 49 | 8/5/2017 | | | \$69,206,183 | | | | \$18,277,075 | | | | \$87,483,258 | | |
| 50 | 8/12/2017 | | | \$67,165,060 | | | | \$18,101,640 | | | | \$85,266,700 | | |
| 51 | 8/19/2017 | | | \$69,067,938 | | | | \$18,981,681 | | | | \$88,049,619 | | |
| 52 | 8/26/2017 | | | \$67,821,162 | | | | \$19,606,571 | | | | \$87,427,733 | | |
| | 8/31/2017 ** | | | \$36,609,542 | | | | \$9,310,254 | | | | \$45,919,796 | | |
| Total thru Current Week | | | \$2,596,617,745 | \$2,484,338,086 | \$112,279,659 | 4.5% | \$691,513,311 | \$943,014,274 | (\$251,500,964) | -26.7% | \$3,288,131,056 | \$3,427,352,360 | (\$139,221,305) | -4.1% |
| Fiscal Year Total | | | \$2,596,617,745 | \$3,715,807,432 | | | \$691,513,311 | \$1,351,710,491 | | | \$3,288,131,056 | \$5,067,517,923 | | |

* FY 17 includes 3 days; FY 16 includes 5 days

** FY 17 includes 5 days; FY 16 includes 4 days

Texas Lottery Commission Fiscal Year Over Year Change in Sales



Note: Week 1 is not a full week of sales as this report is prepared on a Fiscal Year basis.

Texas Lottery Commission
Scratch Tickets by Price Point
Sales, Prize Expense, Sales Contribution and Payout Percentage With Year Over Year Changes
Unaudited

| Fiscal Year | Price Point | # of Active Games | FY Sales | % of Scratch Ticket Sales | Year over Year Change in Sales | FY Prize Expense | Year over Year Change in Prize Expense | FY Sales Contribution | Year over Year Change in Contribution | Average Prize Payout % | Year over Year Change in Payout % |
|--------------|-------------|-------------------|------------------------|---------------------------|--------------------------------|------------------------|--|-----------------------|---------------------------------------|------------------------|-----------------------------------|
| 2016 | \$1.00 | 18 | 111,173,288 | 4.5% | | 67,039,984 | | 44,133,304 | | 60.3% | -0.4% |
| Through | \$2.00 | 31 | 251,594,318 | 10.1% | | 164,082,044 | | 87,512,274 | | 65.2% | -0.4% |
| 4/30/2016 | \$3.00 | 12 | 187,039,665 | 7.5% | | 123,191,384 | | 63,848,281 | | 65.9% | -0.1% |
| | \$5.00 | 53 | 819,243,595 | 33.0% | | 556,598,024 | | 262,645,571 | | 67.9% | 0.0% |
| | \$10.00 | 17 | 489,981,820 | 19.7% | | 343,479,656 | | 146,502,164 | | 70.1% | -0.2% |
| | \$20.00 | 12 | 505,228,700 | 20.3% | | 378,647,654 | | 126,581,046 | | 74.9% | 0.0% |
| | \$50.00 | 4 | 120,076,700 | 4.8% | | 93,392,829 | | 26,683,871 | | 77.8% | 0.0% |
| Total | | 147 | \$2,484,338,086 | | | \$1,726,431,576 | | \$757,906,510 | | 69.5% | 0.1% |
| 2017 | \$1.00 | 22 | 100,426,688 | 3.9% | | 60,555,674 | | 39,871,014 | | 60.3% | 0.1% |
| Through | \$2.00 | 26 | 219,440,148 | 8.5% | | 142,839,241 | | 76,600,907 | | 65.1% | -0.1% |
| 4/29/2017 | \$3.00 | 12 | 179,455,884 | 6.9% | | 118,329,899 | | 61,125,986 | | 65.9% | 0.1% |
| | \$5.00 | 53 | 825,677,935 | 31.8% | | 561,093,768 | | 264,584,167 | | 68.0% | 0.0% |
| | \$10.00 | 19 | 583,776,000 | 22.5% | | 410,762,770 | | 173,013,230 | | 70.4% | 0.3% |
| | \$20.00 | 13 | 554,155,340 | 21.3% | | 415,255,797 | | 138,899,543 | | 74.9% | 0.0% |
| | \$50.00 | 5 | 133,685,750 | 5.1% | | 104,040,051 | | 29,645,699 | | 77.8% | 0.0% |
| Total | | 150 | \$2,596,617,745 | | | \$1,812,877,200 | | \$783,740,545 | | 69.8% | 0.4% |
| Variance | \$1.00 | 4 | -10,746,600 | | -9.7% | -6,484,310 | -9.7% | -4,262,290 | -9.7% | 0.00% | |
| 2017 to | \$2.00 | -5 | -32,154,170 | | -12.8% | -21,242,803 | -12.9% | -10,911,367 | -12.5% | -0.12% | |
| 2016 | \$3.00 | 0 | -7,583,781 | | -4.1% | -4,861,486 | -3.9% | -2,722,295 | -4.3% | 0.07% | |
| | \$5.00 | 0 | 6,434,340 | | 0.8% | 4,495,744 | 0.8% | 1,938,596 | 0.7% | 0.02% | |
| | \$10.00 | 2 | 93,794,180 | | 19.1% | 67,283,114 | 19.6% | 26,511,066 | 18.1% | 0.26% | |
| | \$20.00 | 1 | 48,926,640 | | 9.7% | 36,608,143 | 9.7% | 12,318,497 | 9.7% | -0.01% | |
| | \$50.00 | 1 | 13,609,050 | | 11.3% | 10,647,222 | 11.4% | 2,961,828 | 11.1% | 0.05% | |
| Total | | 3 | \$112,279,659 | | 4.5% | \$86,445,624 | 5.0% | \$25,834,035 | 3.4% | 0.32% | |

Notes - Scratch Ticket Variances

Texas Lottery Commission
Scratch Tickets by Price Point
Sales, Prize Expense, Sales Contribution and Payout Percentage With Year Over Year Changes
Unaudited

| | | | FY 2017 | | FY 2016 | Difference |
|--------------|-------------|--|-----------------|--|-----------------|---------------|
| Sales | \$1 - \$5 | | \$1,325,000,655 | | \$1,369,050,866 | -\$44,050,211 |
| Prize Exp. | \$1 - \$5 | | \$882,818,582 | | \$910,911,436 | -\$28,092,854 |
| Sales Cont. | \$1 - \$5 | | \$442,182,073 | | \$458,139,430 | -\$15,957,357 |
| Prize Exp. % | \$1 - \$5 | | 66.6% | | 66.5% | 0.1% |
| | | | FY 2017 | | FY 2016 | Difference |
| Sales | \$10 - \$50 | | \$1,271,617,090 | | \$1,115,287,220 | \$156,329,870 |
| Prize Exp. | \$10 - \$50 | | \$930,058,618 | | \$815,520,140 | \$114,538,478 |
| Sales Cont. | \$10 - \$50 | | \$341,558,472 | | \$299,767,080 | \$41,791,392 |
| Prize Exp. % | \$10 - \$50 | | 73.1% | | 73.1% | 0.0% |
| | | | FY 2017 | | FY 2016 | Difference |
| Sales | Scratch | | \$2,596,617,745 | | \$2,484,338,086 | \$112,279,659 |
| Prize Exp. | Scratch | | \$1,812,877,200 | | \$1,726,431,576 | \$86,445,624 |
| Sales Cont. | Scratch | | \$783,740,545 | | \$757,906,510 | \$25,834,035 |
| Prize Exp. % | Scratch | | 69.8% | | 69.5% | 0.3% |

| | | | FY 2017 | | FY 2016 | Difference |
|--------------|-------------|--|-----------------|--|-----------------|---------------|
| Sales | \$1 - \$10 | | \$1,908,776,655 | | \$1,859,032,686 | \$49,743,969 |
| Prize Exp. | \$1 - \$10 | | \$1,293,581,352 | | \$1,254,391,092 | \$39,190,260 |
| Sales Cont. | \$1 - \$10 | | \$615,195,303 | | \$604,641,594 | \$10,553,709 |
| Prize Exp. % | \$1 - \$10 | | 67.8% | | 67.5% | 0.3% |
| | | | FY 2017 | | FY 2016 | Difference |
| Sales | \$20 - \$50 | | \$687,841,090 | | \$625,305,400 | \$62,535,690 |
| Prize Exp. | \$20 - \$50 | | \$519,295,848 | | \$472,040,484 | \$47,255,365 |
| Sales Cont. | \$20 - \$50 | | \$168,545,242 | | \$153,264,916 | \$15,280,325 |
| Prize Exp. % | \$20 - \$50 | | 75.5% | | 75.5% | 0.0% |
| | | | FY 2017 | | FY 2016 | Difference |
| Sales | Scratch | | \$2,596,617,745 | | \$2,484,338,086 | \$112,279,659 |
| Prize Exp. | Scratch | | \$1,812,877,200 | | \$1,726,431,576 | \$86,445,624 |
| Sales Cont. | Scratch | | \$783,740,545 | | \$757,906,510 | \$25,834,035 |
| Prize Exp. % | Scratch | | 69.8% | | 69.5% | 0.3% |

Texas Lottery Commission
Weekly Sales Summary
& Comparison to Previous Week
 Unaudited

| | Week Ending 4/29/2017 | % of Sales | Week Ending 4/22/2017 | % of Sales | \$ change | % change |
|-----------------------|--------------------------|---------------|--------------------------|---------------|--------------------|----------|
| | <u>THIS WEEK</u> | | <u>LAST WEEK</u> | | | |
| Total Sales | <u>\$100,390,800</u> | | <u>\$98,869,120</u> | | <u>\$1,521,680</u> | 1.54% |
| Scratch Tickets | <u>\$81,433,819</u> | 81.1% | <u>\$80,531,863</u> | 81.5% | <u>\$901,956</u> | 1.12% |
| Lotto | \$2,051,812 | 2.0% | \$2,015,821 | 2.0% | \$35,991 | 1.79% |
| Lotto Extra | \$419,985 | 0.4% | \$410,500 | 0.4% | \$9,485 | 2.31% |
| Pick 3 | \$4,894,357 | 4.9% | \$4,874,889 | 4.9% | \$19,468 | 0.40% |
| Pick 3 Sum It Up | \$92,684 | 0.1% | \$93,304 | 0.1% | -\$620 | -0.66% |
| Cash Five | \$845,077 | 0.8% | \$841,820 | 0.9% | \$3,257 | 0.39% |
| Texas Two Step | \$849,146 | 0.8% | \$1,151,971 | 1.2% | -\$302,825 | -26.29% |
| Mega Millions | \$2,038,253 | 2.0% | \$1,921,222 | 1.9% | \$117,031 | 6.09% |
| Megaplier | \$572,946 | 0.6% | \$546,796 | 0.6% | \$26,150 | 4.78% |
| Daily 4 | \$1,946,857 | 1.9% | \$1,907,275 | 1.9% | \$39,582 | 2.08% |
| Daily 4 Sum It Up | \$101,948 | 0.1% | \$103,817 | 0.1% | -\$1,869 | -1.80% |
| Powerball | \$3,741,048 | 3.7% | \$3,157,754 | 3.2% | \$583,294 | 18.47% |
| Power Play | \$562,887 | 0.6% | \$489,659 | 0.5% | \$73,228 | 14.95% |
| All or Nothing | \$567,734 | 0.6% | \$557,346 | 0.6% | \$10,388 | 1.86% |
| Texas Triple Chance | \$272,248 | 0.3% | \$265,084 | 0.3% | \$7,164 | 2.70% |
| Total Draw Game Sales | <u>\$18,956,981</u> | | <u>\$18,337,257</u> | | <u>\$619,724</u> | 3.38% |

* Totals may not sum due to rounding.

Texas Lottery Commission
Weekly Sales Summary
Unaudited

SCRATCH TICKETS
TOP TEN SELLING GAMES

For the week ending: 4/29/2017

| Rank | Price Point | Game | Sales (Millions) |
|------|-------------|---------------------------|------------------|
| 1 | \$ 10 | WILLY WONKA GOLDEN TICKET | \$ 6.177 |
| 2 | \$ 10 | MEGA LOTERIA | \$ 4.685 |
| 3 | \$ 20 | 100X THE CASH | \$ 4.409 |
| 4 | \$ 50 | ULTIMATE MILLIONS | \$ 4.393 |
| 5 | \$ 20 | MONEY | \$ 4.284 |
| 6 | \$ 10 | 50X THE CASH | \$ 3.840 |
| 7 | \$ 10 | CASHWORD MULTIPLIER | \$ 3.658 |
| 8 | \$ 5 | SUPER LOTERIA | \$ 3.608 |
| 9 | \$ 5 | RICH | \$ 3.305 |
| 10 | \$ 3 | BONUS CASHWORD | \$ 2.431 |

Texas Lottery Commission
Prize Payout Tracking Report
Unaudited

Through the week ending: 4/29/2017

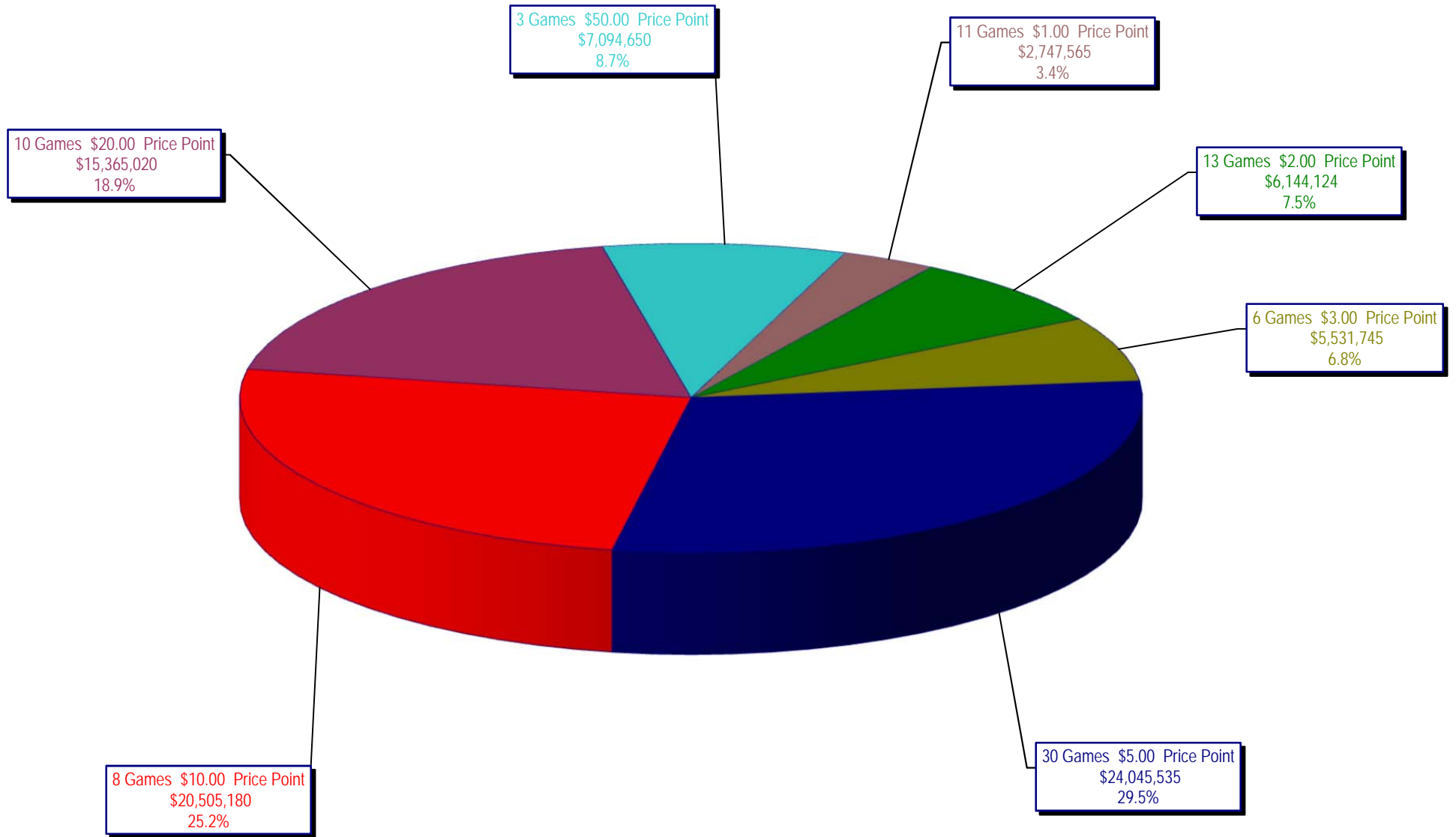
Draw Game Sales

| | | FY Sales Through Week Ending 4/29/2017 | | FY Prize Expense Through Week Ending 4/29/2017 | Actual* Prize Payout | Base Payout (Prize Pool) |
|---------------------|----|---|----|---|-------------------------|-----------------------------|
| Lotto | \$ | 76,009,302 | \$ | 38,104,796 | 50.13% | 50.00% |
| Lotto Extra | | 14,844,906 | | 7,958,330 | 53.61% | 53.70% |
| Pick 3 | | 166,943,157 | | 81,048,400 | 48.55% | 50.00% |
| Pick 3 Sum It Up | | 3,194,725 | | 1,425,809 | 44.63% | 50.00% |
| Cash Five | | 29,247,343 | | 14,623,793 | 50.00% | 50.00% |
| Texas Two Step | | 36,739,979 | | 18,772,070 | 51.09% | 50.00% |
| Mega Millions | | 75,441,285 | | 38,523,937 | 51.06% | 50.00%** |
| Megaplier | | 20,485,986 | | 10,252,306 | 50.05% | N/A |
| Daily 4 | | 62,898,125 | | 34,838,150 | 55.39% | 50.00% |
| Daily 4 Sum It Up | | 3,396,767 | | 2,957,404 | 87.07% | 50.00% |
| Powerball | | 151,587,009 | | 75,818,692 | 50.02% | 50.00%** |
| Power Play | | 21,489,448 | | 10,749,479 | 50.02% | N/A |
| All or Nothing | | 19,240,964 | | 10,497,086 | 54.56% | 55.98% |
| Texas Triple Chance | | 9,994,316 | | 5,548,824 | 55.52% | 54.42% |
| Totals | \$ | 691,513,311 | \$ | 351,119,076 | 50.78% | |

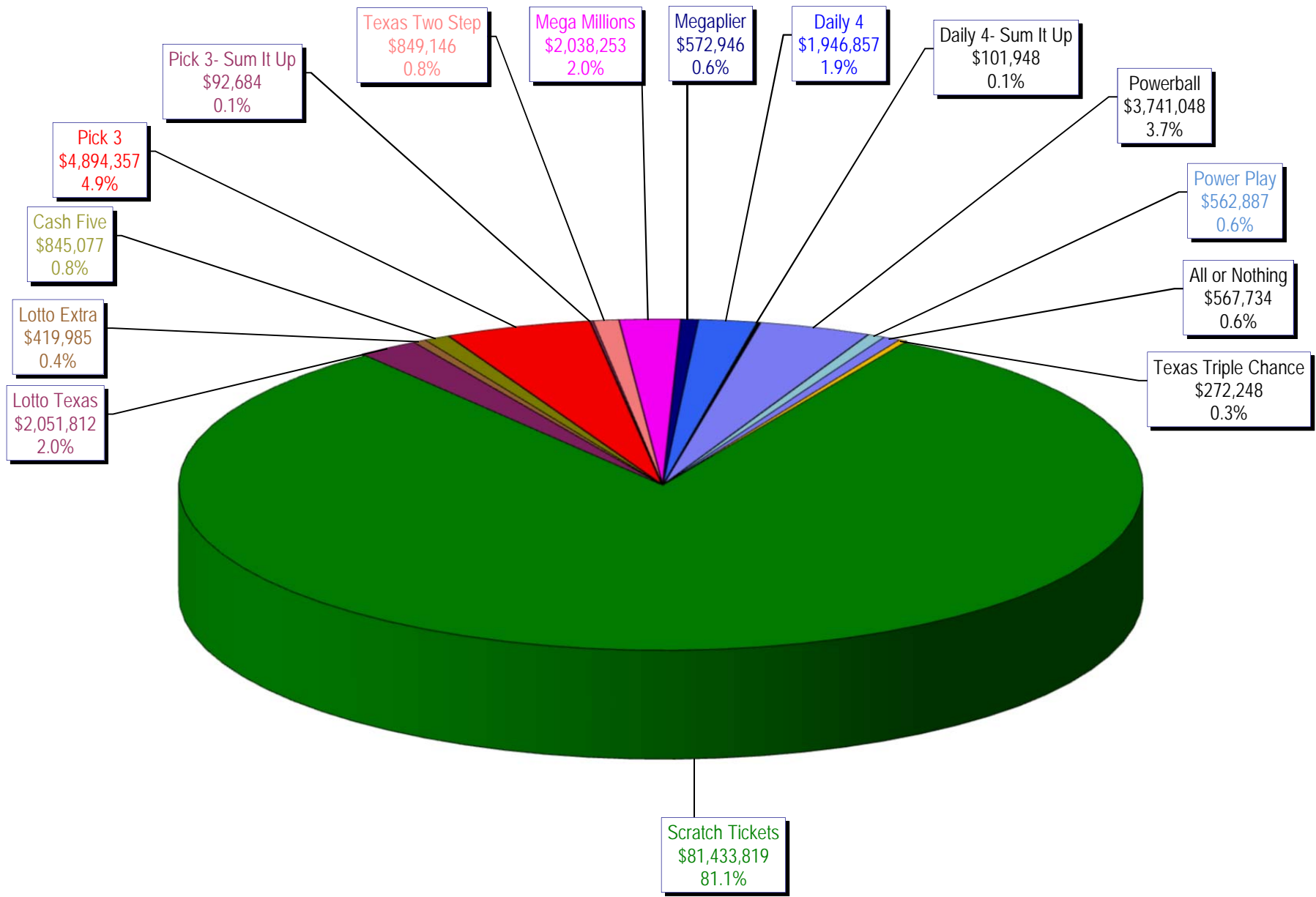
* Before Unclaimed Prizes

**Estimated; depends on # of guaranteed prizes won in Texas

Texas Lottery Commission
Scratch Ticket Sales
For the week ending 4/29/2017
(Unaudited)



Texas Lottery Commission
All Game Sales
For the week ending 4/29/2017
(Unaudited)



Texas Lottery Commission - Weekly Sales Summary for FY 2017 (Unaudited)

| Week Ended | Scratch Tickets | New Games & Dates | Lotto Texas | Jackpot W S | Lotto Extra | Pick 3 | Pick 3 Sum It Up | Cash Five | Texas Two Step | Jackpot M TH | Mega Millions | Jackpot T F | Megaplier | Daily 4 | Daily 4 Sum It Up | Powerball | Jackpot W S | Power Play | All or Nothing | Texas Triple Chance | Total | Per Cap. |
|------------|-----------------|--|-------------|----------------|-------------|-----------|---------------------|-----------|----------------|-----------------|---------------|----------------|-----------|-----------|----------------------|-----------|----------------|------------|----------------|------------------------|-------------|-------------|
| 9/3/2016* | 69,589,808 | 0 | 2,106,552 | 8.75 9.25 | 402,665 | 4,798,985 | 92,214 | 843,135 | 810,947 | 200 200 | 2,331,141 | 84 92 | 631,299 | 1,788,614 | 96,398 | 4,189,234 | 154 170 | 603,430 | 528,102 | 306,194 | 89,118,717 | 3.24 |
| 9/10/2016 | 65,952,418 | 1810 (\$1.N); 1809 (\$1.N); 1811 (\$5.N) - 9/06/16 | 2,095,828 | 9.75 10.25 | 399,944 | 4,590,651 | 86,697 | 818,614 | 862,148 | 225 275 | 2,490,552 | 101 111 | 655,066 | 1,647,119 | 87,455 | 4,473,836 | 186 205 | 628,810 | 506,718 | 291,940 | 85,587,795 | 3.12 |
| 9/17/2016 | 66,196,270 | 0 | 2,127,440 | 11 11.75 | 405,936 | 4,553,039 | 86,110 | 822,240 | 1,180,444 | 400 550 | 2,661,252 | 122 133 | 692,583 | 1,705,629 | 91,610 | 5,096,928 | 222 244 | 696,626 | 503,466 | 291,988 | 87,111,560 | 3.17 |
| 9/24/2016 | 64,383,005 | 1793 (\$2.N); 1782 (\$5.N); 1781 (\$10.N) - 9/19/16 | 2,141,721 | 12.25 13 | 404,127 | 4,551,066 | 83,958 | 811,604 | 1,465,789 | 700 900 | 1,733,288 | 15 20 | 489,347 | 1,680,793 | 90,386 | 2,790,676 | 40 50 | 429,512 | 503,041 | 275,858 | 81,834,170 | 2.98 |
| 10/1/2016 | 67,349,951 | 0 | 2,203,652 | 13.25 14 | 414,603 | 4,642,047 | 91,016 | 857,979 | 816,836 | 200 225 | 1,840,801 | 25 30 | 515,384 | 1,688,464 | 88,184 | 2,960,772 | 60 70 | 455,619 | 589,964 | 354,532 | 84,869,803 | 3.09 |
| 10/8/2016 | 71,598,690 | 1772 (\$1.N); 1770 (\$2.N); 1813 (\$5.N); 1779 (\$20.N) - 10/03/16 | 2,211,941 | 14.5 15.5 | 419,062 | 4,900,537 | 94,965 | 867,520 | 849,234 | 200 225 | 1,925,289 | 35 41 | 540,723 | 1,780,544 | 92,908 | 3,109,092 | 80 91 | 471,027 | 611,898 | 336,368 | 89,809,797 | 3.27 |
| 10/15/2016 | 69,444,762 | 0 | 2,207,002 | 16 16.75 | 416,802 | 4,549,017 | 89,171 | 836,548 | 1,024,493 | 300 425 | 1,780,458 | 49 15 | 496,567 | 1,679,519 | 87,007 | 3,499,528 | 107 122 | 510,617 | 577,343 | 321,190 | 87,520,023 | 3.19 |
| 10/22/2016 | 69,317,066 | 1814 (\$3.N); 1815 (\$5.N); 1832 (\$50.N) - 10/17/16 | 2,222,089 | 17 18 | 420,632 | 4,457,898 | 84,115 | 836,942 | 1,260,293 | 575 750 | 1,714,985 | 20 25 | 482,408 | 1,636,471 | 83,009 | 3,800,444 | 136 151 | 542,655 | 564,808 | 315,588 | 87,739,402 | 3.19 |
| 10/29/2016 | 69,729,599 | 0 | 2,269,908 | 18.5 19.25 | 430,487 | 4,511,234 | 86,114 | 833,125 | 779,029 | 200 200 | 1,781,093 | 30 35 | 500,203 | 1,711,520 | 88,083 | 4,097,116 | 164 180 | 575,614 | 565,102 | 306,622 | 88,264,847 | 3.21 |
| 11/5/2016 | 73,451,702 | 0 | 2,168,782 | 20 5 | 414,167 | 4,996,360 | 97,149 | 859,798 | 796,978 | 200 200 | 1,904,765 | 40 47 | 534,014 | 1,913,301 | 100,223 | 4,796,408 | 198 217 | 660,205 | 591,246 | 318,544 | 93,603,641 | 3.41 |
| 11/12/2016 | 70,998,320 | 1816 (\$2.N); 1808 (\$5.N); 1817 (\$5.N); 1818 (\$10.N) - 11/07/16 | 1,893,513 | 5.25 5.5 | 368,470 | 4,642,196 | 89,581 | 833,195 | 869,408 | 225 275 | 1,964,313 | 54 65 | 541,639 | 1,741,306 | 90,176 | 5,313,351 | 236 258 | 715,597 | 563,280 | 299,436 | 90,923,780 | 3.31 |
| 11/19/2016 | 75,265,196 | 1819 (\$1.N); 1820 (\$5.N); 1869 (\$10.N) - 11/16/16 | 1,924,291 | 5.75 6 | 376,977 | 4,595,331 | 87,939 | 830,211 | 1,078,765 | 400 550 | 2,072,033 | 73 82 | 567,597 | 1,715,227 | 91,335 | 6,391,094 | 293 320 | 836,372 | 557,058 | 300,408 | 96,689,833 | 3.52 |
| 11/26/2016 | 68,983,157 | 0 | 1,945,264 | 6.25 6.5 | 383,703 | 4,472,018 | 83,761 | 795,696 | 737,931 | 200 225 | 1,698,370 | 15 20 | 487,160 | 1,649,794 | 84,195 | 9,839,524 | 359 403 | 1,235,062 | 527,328 | 283,526 | 93,206,488 | 3.39 |
| 12/3/2016 | 72,688,514 | 0 | 1,989,472 | 6.75 7 | 386,573 | 4,901,443 | 91,365 | 857,900 | 1,002,319 | 275 375 | 1,761,923 | 25 30 | 499,193 | 1,823,528 | 94,278 | 2,932,322 | 40 54 | 444,551 | 569,036 | 299,426 | 90,341,842 | 3.29 |
| 12/10/2016 | 71,676,549 | 1807 (\$5.N); 1866 (\$10.N); 1822 (\$20.N) - 12/05/16 | 2,006,953 | 7.25 7.5 | 388,230 | 4,748,391 | 88,668 | 849,940 | 1,337,879 | 525 700 | 1,830,451 | 35 43 | 505,981 | 1,812,622 | 88,690 | 3,176,570 | 67 85 | 475,269 | 551,930 | 289,016 | 89,827,139 | 3.27 |
| 12/17/2016 | 73,909,726 | 0 | 2,048,592 | 7.75 8 | 398,632 | 4,778,144 | 88,676 | 854,061 | 1,906,792 | 900 1,125 | 1,966,377 | 51 59 | 539,946 | 1,844,818 | 94,354 | 3,892,738 | 100 119 | 561,900 | 551,086 | 288,218 | 93,724,059 | 3.41 |
| 12/24/2016 | 77,369,179 | 1823 (\$2.N); 1824 (\$5.N) - 12/19/16 | 2,210,042 | 8.25 8.75 | 421,128 | 4,973,874 | 91,323 | 861,510 | 1,331,122 | 1,375 200 | 2,200,791 | 67 76 | 590,601 | 2,035,860 | 117,672 | 3,119,154 | 40 50 | 473,229 | 558,224 | 291,886 | 96,645,594 | 3.52 |
| 12/31/2016 | 80,868,854 | 0 | 2,282,841 | 9.5 10.25 | 440,711 | 4,899,905 | 94,021 | 861,849 | 887,304 | 225 275 | 2,362,970 | 85 96 | 630,614 | 2,004,547 | 116,201 | 3,351,922 | 60 70 | 506,969 | 555,832 | 293,476 | 100,158,015 | 3.65 |
| 1/7/2017 | 73,328,624 | 1825 (\$1.N); 1826 (\$5.N); 1827 (\$10.N) - 01/03/17 | 2,097,687 | 10.75 11.5 | 408,605 | 4,745,822 | 91,405 | 842,694 | 819,153 | 200 200 | 2,524,889 | 105 117 | 654,478 | 1,898,406 | 110,548 | 3,107,618 | 80 94 | 474,348 | 550,422 | 285,570 | 91,940,268 | 3.35 |
| 1/14/2017 | 73,471,643 | 0 | 2,225,676 | 12 12.5 | 433,448 | 5,078,795 | 95,352 | 857,133 | 949,656 | 225 300 | 2,863,206 | 126 137 | 730,587 | 1,930,373 | 112,082 | 3,684,764 | 106 121 | 544,661 | 562,100 | 283,564 | 93,823,040 | 3.42 |
| 1/21/2017 | 72,229,342 | 1775 (\$2.N); 1760 (\$3.N); 1863 (\$5.N); 1864 (\$5.N); 1865 (\$5.N); 1829 (\$20.N) - 01/16/17 | 2,187,377 | 13.25 14 | 426,689 | 4,773,213 | 89,986 | 839,794 | 1,221,317 | 425 575 | 2,924,743 | 150 162 | 731,997 | 1,874,302 | 108,260 | 3,809,290 | 135 153 | 558,760 | 531,350 | 272,232 | 92,578,652 | 3.37 |
| 1/28/2017 | 72,056,793 | 0 | 2,265,574 | 14.75 15.5 | 435,796 | 4,784,366 | 89,015 | 836,675 | 1,639,149 | 750 950 | 3,196,084 | 177 188 | 786,375 | 1,799,122 | 97,940 | 4,327,764 | 170 187 | 608,152 | 532,502 | 270,144 | 93,725,450 | 3.41 |
| 2/4/2017 | 77,292,806 | 0 | 2,340,683 | 16.25 17 | 457,065 | 5,065,632 | 97,384 | 859,297 | 1,988,757 | 1,200 1,450 | 1,807,723 | 15 20 | 506,796 | 1,898,166 | 105,468 | 5,456,612 | 206 229 | 741,396 | 557,324 | 279,486 | 99,454,595 | 3.62 |
| 2/11/2017 | 78,699,192 | 1752 (\$5.N); 1867 (\$10.N) - 02/06/17 1767 (\$1.N) - 02/10/17 | 2,353,444 | 17.5 18 | 462,141 | 5,105,285 | 98,776 | 867,663 | 880,079 | 200 225 | 1,862,092 | 25 30 | 532,045 | 1,890,124 | 108,210 | 6,261,114 | 255 285 | 839,953 | 563,628 | 275,692 | 100,799,437 | 3.67 |
| 2/18/2017 | 77,864,124 | 0 | 2,407,222 | 18.75 19.75 | 478,558 | 4,833,590 | 93,535 | 844,013 | 908,531 | 300 200 | 1,973,451 | 38 46 | 561,783 | 1,826,773 | 108,517 | 8,780,642 | 310 349 | 1,133,132 | 550,644 | 276,074 | 102,640,589 | 3.74 |

Texas Lottery Commission - Weekly Sales Summary for FY 2017 (Unaudited)

| Week Ended | Scratch Tickets | New Games & Dates | Lotto Texas | Jackpot W S | Lotto Extra | Pick 3 | Pick 3 Sum It Up | Cash Five | Texas Two Step | Jackpot M TH | Mega Millions | Jackpot T F | Megaplier | Daily 4 | Daily 4 Sum It Up | Powerball | Jackpot W S | Power Play | All or Nothing | Texas Triple Chance | Total | Per Cap. |
|--------------------------------------|-----------------|---|--------------|----------------|--------------|--------------|---------------------|--------------|----------------|-----------------|---------------|----------------|--------------|--------------|----------------------|--------------|----------------|--------------|----------------|------------------------|---------------|-------------------|
| 2/25/2017 | 80,287,015 | 1876 (\$1.N); 1831 (\$5.N) - 02/20/17 | 2,606,244 | 20.25 21 | 520,379 | 4,914,612 | 95,213 | 850,348 | 848,140 | 200 225 | 2,219,616 | 55 64 | 617,739 | 1,832,600 | 100,683 | 11,293,438 | 403 40 | 1,395,663 | 556,882 | 281,560 | 108,420,131 | 3.95 |
| 3/4/2017 | 87,500,184 | 0 | 2,567,325 | 21.75 22.5 | 509,409 | 5,330,670 | 101,687 | 893,098 | 1,120,981 | 300 425 | 2,321,182 | 73 83 | 641,083 | 2,010,651 | 112,173 | 3,217,286 | 53 68 | 511,699 | 590,672 | 285,944 | 107,714,043 | 3.92 |
| 3/11/2017 | 84,966,053 | 1699 (\$2.N); 1868 (\$3.N); 1833 (\$5.N) - 03/06/17 1755 (\$5.N); 1853 (\$20.N) - 03/08/17 | 2,588,161 | 23.5 24.5 | 513,793 | 5,226,715 | 101,446 | 881,469 | 1,405,624 | 600 775 | 2,563,375 | 94 106 | 683,906 | 1,899,173 | 103,287 | 3,637,612 | 85 104 | 562,430 | 579,420 | 278,346 | 105,990,810 | 3.86 |
| 3/18/2017 | 82,972,977 | 1806 (\$3.N) - 03/14/17 | 2,592,069 | 25.5 26.25 | 513,061 | 4,875,639 | 93,232 | 851,969 | 854,304 | 200 225 | 2,652,325 | 119 131 | 701,405 | 1,772,646 | 94,333 | 4,006,212 | 123 141 | 601,813 | 550,726 | 274,558 | 103,407,268 | 3.76 |
| 3/25/2017 | 82,217,628 | 1836 (\$1.N); 1835 (\$5.N); 1834 (\$10.N) - 03/20/17 | 2,602,050 | 26.75 27.25 | 516,731 | 5,013,110 | 100,086 | 846,048 | 856,270 | 200 225 | 2,824,549 | 140 151 | 736,397 | 1,805,723 | 95,407 | 3,520,114 | 155 40 | 542,539 | 555,218 | 268,750 | 102,500,620 | 3.73 |
| 4/1/2017 | 86,271,920 | 0 | 2,020,314 | 5 5.25 | 408,799 | 5,070,719 | 101,350 | 863,130 | 886,811 | 300 200 | 3,145,112 | 162 174 | 818,473 | 1,853,296 | 97,814 | 2,918,488 | 50 60 | 468,058 | 573,072 | 271,708 | 105,769,062 | 3.85 |
| 4/8/2017 | 81,499,404 | 1695 (\$2.N); 1850 (\$3.N); 1821 (\$5.N) - 04/03/17 | 2,012,832 | 5.5 5.75 | 413,441 | 5,120,496 | 102,223 | 877,611 | 863,201 | 225 200 | 1,840,599 | 15 20 | 530,730 | 1,891,162 | 98,057 | 2,801,946 | 40 50 | 446,980 | 582,584 | 272,432 | 99,353,698 | 3.62 |
| 4/15/2017 | 81,831,134 | 0 | 2,025,065 | 6 6.25 | 418,151 | 4,887,655 | 93,845 | 848,027 | 931,230 | 225 300 | 1,870,081 | 25 30 | 541,020 | 1,849,252 | 101,095 | 2,996,096 | 60 70 | 470,454 | 564,516 | 269,150 | 99,696,770 | 3.63 |
| 4/22/2017 | 80,531,863 | 1875 (\$1.N); 1773 (\$5.N); 1870 (\$50.N) - 04/17/17 | 2,015,821 | 6.5 6.75 | 410,500 | 4,874,889 | 93,304 | 841,820 | 1,151,971 | 425 575 | 1,921,222 | 37 45 | 546,796 | 1,907,275 | 103,817 | 3,157,754 | 80 90 | 469,659 | 557,346 | 265,084 | 98,869,120 | 3.60 |
| 4/29/2017 | 81,433,819 | 0 | 2,051,812 | 7 7.25 | 419,985 | 4,894,357 | 92,684 | 845,077 | 849,146 | 200 225 | 2,038,253 | 52 61 | 572,946 | 1,946,857 | 101,948 | 3,741,048 | 100 113 | 562,887 | 567,734 | 272,248 | 100,390,800 | 3.65 |
| weekly change | 1.1% | | 1.8% | | 2.3% | 0.4% | -0.7% | 0.4% | -26.3% | | 6.1% | | 4.8% | 2.1% | -1.8% | 18.5% | | 15.0% | 1.9% | 2.7% | 1.5% | |
| | SALES | | SALES | | SALES | SALES | SALES | SALES | SALES | SALES | SALES | SALES | SALES | SALES | SALES | SALES | SALES | SALES | SALES | SALES | SALES | % of Sales |
| Calendar Year to date | 1,354,454,521 | | 38,959,356 | | 7,746,551 | 84,595,561 | 1,630,519 | 14,545,866 | 18,174,320 | | 40,548,502 | | 10,894,556 | 31,885,898 | 1,759,636 | 76,717,798 | | 10,952,584 | 9,526,140 | 4,682,542 | 1,707,074,349 | 100.0% |
| Fiscal Year to date 2017 | 2,596,617,745 | | 76,009,302 | | 14,844,906 | 166,943,157 | 3,194,725 | 29,247,343 | 36,739,979 | | 75,441,285 | | 20,485,986 | 62,898,125 | 3,396,767 | 151,587,009 | | 21,489,448 | 19,240,964 | 9,994,316 | 3,288,131,056 | 100.0% |
| *Full week includes 4 days from FY16 | | | | | | | | | | | | | | | | | | | | | | |