



WEEKLY SALES SUMMARY

Unaudited

Week Ending: 4/30/2016

Texas Lottery Commission
Fiscal Year to Date Sales Comparison
Unaudited

Through the Week Ending 4/30/2016 (35 Weeks)

Sales by Game	FY 2014 *	FY 2015 **	FY 2016	\$ Change		% Change	
				FY 2016 to FY 2014	FY 2016 to FY 2015	FY 2016 to FY 2014	FY 2016 to FY 2015
Scratch Tickets	\$ 2,241,400,810	\$ 2,335,677,176	\$ 2,484,338,086	\$ 242,937,276	\$ 148,660,910	10.8%	6.4%
Lotto Texas	92,507,149	82,498,612	83,494,715	-9,012,434	996,103	-9.7%	1.2%
Lotto Extra	12,433,992	12,797,706	14,558,670	2,124,678	1,760,964	17.1%	13.8%
Pick 3	171,532,446	170,657,821	171,445,785	-86,661	787,964	-0.1%	0.5%
Pick 3 Sum It Up	3,386,191	3,435,500	3,512,443	126,252	76,943	3.7%	2.2%
Cash Five	35,806,441	33,946,961	31,227,281	-4,579,160	-2,719,680	-12.8%	-8.0%
Texas Two Step	37,188,352	35,682,758	36,116,591	-1,071,761	433,833	-2.9%	1.2%
Mega Millions	145,008,826	101,863,017	83,579,816	-61,429,010	-18,283,201	-42.4%	-17.9%
Megaplier	30,898,477	23,792,794	21,311,359	-9,587,118	-2,481,435	-31.0%	-10.4%
Daily 4	56,421,912	58,529,880	60,443,875	4,021,963	1,913,995	7.1%	3.3%
Daily 4 Sum It Up	3,482,890	3,414,540	3,195,849	-287,041	-218,691	-8.2%	-6.4%
Powerball	145,808,632	152,433,352	356,350,818	210,542,186	203,917,466	144.4%	133.8%
Power Play	17,446,374	18,837,431	39,530,427	22,084,053	20,692,996	126.6%	109.9%
All or Nothing	32,591,829	26,175,822	20,930,264	-11,661,565	-5,245,558	-35.8%	-20.0%
Monopoly	- ¹	2,656,370	-	-	-2,656,370	-	-100.0%
Texas Triple Chance	-	-	17,316,382	17,316,382	17,316,382	-	-
Total	\$ 3,025,914,320	\$ 3,062,399,740	\$ 3,427,352,360	\$ 401,438,040	\$ 364,952,621	13.3%	11.9%

* 2 extra days

** 1 extra day

¹ Monopoly sales were suspended after draw on 12/12/14

Texas Lottery Commission
Fiscal Year to Date Cumulative Average Sales Comparison
Unaudited

Through the Week Ending 4/30/2016 (35 Weeks)

Sales by Game	FY 2014	FY 2015	FY 2016
Scratch Tickets	\$ 9,148,575	\$ 9,572,447	\$ 10,223,614
Lotto Texas	377,580	338,109	343,600
Lotto Extra	50,751	52,450	59,912
Pick 3	700,132	699,417	705,538
Pick 3 Sum It Up	13,821	14,080	14,454
Cash Five	146,149	139,127	128,507
Texas Two Step	151,789	146,241	148,628
Mega Millions	591,873	417,471	343,950
Megaplier	126,116	97,511	87,701
Daily 4	230,294	239,877	248,740
Daily 4 Sum It Up	14,216	13,994	13,152
Powerball	595,137	624,727	1,466,464
Power Play	71,210	77,203	162,677
All or Nothing	133,028	107,278	86,133
Monopoly	- **	48,298	-
Texas Triple Chance	-	- *	79,799
Total	\$ <u>12,350,671</u>	\$ <u>12,588,229</u>	\$ <u>14,112,869</u>

thru 5/03/2014
245 days

**

thru 5/02/2015
244 days
55 days

*

thru 4/30/2016
243 days
217 days

Texas Lottery Commission
Fiscal Year Over Year Change in Sales
Unaudited
FY 2016 Compared to FY 2015

			SCRATCH TICKETS				DRAW GAMES				TOTAL SALES			
FY 2016			% change -				% change -				% change -			
Week	Week	Ending	FY 2016	FY 2015	Difference	Cumulative Sales	FY 2016	FY 2015	Difference	Cumulative Sales	FY 2016	FY 2015	Difference	Cumulative Sales
1	9/5/2015 *		\$49,534,249	\$54,911,801	(\$5,377,552)	-9.8%	\$17,091,724	\$17,482,488	(\$390,765)	-2.2%	\$66,625,973	\$72,394,289	(\$5,768,317)	-8.0%
2	9/12/2015		\$61,566,291	\$61,436,533	\$129,758	0.2%	\$20,630,922	\$19,097,081	\$1,533,841	8.0%	\$82,197,213	\$80,533,614	\$1,663,599	2.1%
3	9/19/2015		\$63,530,657	\$60,959,234	\$2,571,423	4.2%	\$20,327,253	\$20,567,894	(\$240,641)	-1.2%	\$83,857,910	\$81,527,128	\$2,330,782	2.9%
4	9/26/2015		\$61,731,400	\$59,710,056	\$2,021,344	3.4%	\$22,252,290	\$19,920,828	\$2,331,462	11.7%	\$83,983,690	\$79,630,884	\$4,352,806	5.5%
5	10/3/2015		\$67,048,415	\$62,119,854	\$4,928,561	7.9%	\$25,436,791	\$18,531,421	\$6,905,370	37.3%	\$92,485,206	\$80,651,275	\$11,833,931	14.7%
6	10/10/2015		\$66,049,706	\$61,253,665	\$4,796,041	7.8%	\$18,138,977	\$18,985,332	(\$846,355)	-4.5%	\$84,188,683	\$80,238,997	\$3,949,687	4.9%
7	10/17/2015		\$65,073,593	\$60,230,048	\$4,843,545	8.0%	\$17,776,414	\$19,538,402	(\$1,761,988)	-9.0%	\$82,850,007	\$79,768,450	\$3,081,558	3.9%
8	10/24/2015		\$64,087,437	\$62,384,112	\$1,703,325	2.7%	\$18,450,464	\$21,475,643	(\$3,025,179)	-14.1%	\$82,537,901	\$83,859,755	(\$1,321,854)	-1.6%
9	10/31/2015		\$66,025,374	\$63,404,713	\$2,620,661	4.1%	\$19,568,150	\$23,568,817	(\$4,000,668)	-17.0%	\$85,593,524	\$86,973,530	(\$1,380,007)	-1.6%
10	11/7/2015		\$68,137,192	\$65,486,719	\$2,650,473	4.0%	\$20,398,351	\$23,749,032	(\$3,350,681)	-14.1%	\$88,535,543	\$89,235,751	(\$700,208)	-0.8%
11	11/14/2015		\$65,449,428	\$61,745,521	\$3,703,907	6.0%	\$20,169,382	\$17,449,604	\$2,719,779	15.6%	\$85,618,810	\$79,195,125	\$6,423,686	8.1%
12	11/21/2015		\$68,364,421	\$66,353,583	\$2,010,838	3.0%	\$17,174,606	\$17,108,084	\$66,522	0.4%	\$85,539,027	\$83,461,667	\$2,077,360	2.5%
13	11/28/2015		\$61,091,628	\$60,471,184	\$620,444	1.0%	\$17,168,993	\$17,303,129	(\$134,136)	-0.8%	\$78,260,621	\$77,774,313	\$486,309	0.6%
14	12/5/2015		\$67,830,827	\$66,648,696	\$1,182,131	1.8%	\$19,252,418	\$18,862,425	\$389,994	2.1%	\$87,083,245	\$85,511,121	\$1,572,125	1.8%
15	12/12/2015		\$68,324,452	\$65,708,630	\$2,615,822	4.0%	\$19,529,408	\$18,649,598	\$879,811	4.7%	\$87,853,860	\$84,358,228	\$3,495,633	4.1%
16	12/19/2015		\$71,041,258	\$68,551,298	\$2,489,960	3.6%	\$20,824,840	\$19,051,100	\$1,773,740	9.3%	\$91,866,098	\$87,602,398	\$4,263,700	4.9%
17	12/26/2015		\$78,125,965	\$73,858,618	\$4,267,347	5.8%	\$22,586,417	\$20,006,357	\$2,580,061	12.9%	\$100,712,382	\$93,864,975	\$6,847,408	7.3%
18	1/2/2016		\$76,712,975	\$67,733,268	\$8,979,707	13.3%	\$27,972,880	\$21,355,167	\$6,617,714	31.0%	\$104,685,855	\$89,088,435	\$15,597,421	17.5%
19	1/9/2016		\$77,136,541	\$64,745,641	\$12,390,900	19.1%	\$127,289,478	\$22,265,347	\$105,024,131	471.7%	\$204,426,019	\$87,010,988	\$117,415,031	134.9%
20	1/16/2016		\$73,858,865	\$64,015,166	\$9,843,699	15.4%	\$140,104,126	\$23,694,617	\$116,409,509	491.3%	\$213,962,991	\$87,709,783	\$126,253,208	143.9%
21	1/23/2016		\$70,665,700	\$62,569,156	\$8,096,544	12.9%	\$20,781,745	\$19,765,442	\$1,016,303	5.1%	\$91,447,445	\$82,334,598	\$9,112,847	11.1%
22	1/30/2016		\$71,051,685	\$68,001,588	\$3,050,097	4.5%	\$20,433,401	\$22,877,000	(\$2,443,600)	-10.7%	\$91,485,086	\$90,878,588	\$606,498	0.7%
23	2/6/2016		\$78,458,428	\$75,677,650	\$2,780,778	3.7%	\$21,274,800	\$31,662,209	(\$10,387,409)	-32.8%	\$99,733,228	\$107,339,859	(\$7,606,631)	-7.1%
24	2/13/2016		\$80,754,850	\$75,368,712	\$5,386,138	7.1%	\$21,391,919	\$46,091,747	(\$24,699,828)	-53.6%	\$102,146,769	\$121,460,459	(\$19,313,690)	-15.9%
25	2/20/2016		\$80,078,271	\$74,833,076	\$5,245,195	7.0%	\$21,911,382	\$19,865,172	\$2,046,211	10.3%	\$101,989,653	\$94,698,248	\$7,291,406	7.7%
26	2/27/2016		\$78,832,217	\$69,918,013	\$8,914,204	12.7%	\$22,823,086	\$19,735,352	\$3,087,734	15.6%	\$101,655,303	\$89,653,365	\$12,001,938	13.4%
27	3/5/2016		\$80,019,524	\$74,848,961	\$5,170,563	6.9%	\$23,146,906	\$19,946,068	\$3,200,838	16.0%	\$103,166,430	\$94,795,029	\$8,371,401	8.8%
28	3/12/2016		\$78,524,214	\$70,079,409	\$8,444,805	12.1%	\$19,311,625	\$20,044,562	(\$732,937)	-3.7%	\$97,835,839	\$90,123,971	\$7,711,868	8.6%
29	3/19/2016		\$75,446,960	\$70,368,686	\$5,078,274	7.2%	\$18,001,000	\$18,480,795	(\$479,795)	-2.6%	\$93,447,960	\$88,849,481	\$4,598,479	5.2%
30	3/26/2016		\$75,293,759	\$70,280,600	\$5,013,159	7.1%	\$18,553,964	\$17,595,205	\$958,760	5.4%	\$93,847,723	\$87,875,805	\$5,971,919	6.8%
31	4/2/2016		\$79,316,221	\$74,369,952	\$4,946,269	6.7%	\$19,482,563	\$18,378,917	\$1,103,646	6.0%	\$98,798,784	\$92,748,869	\$6,049,915	6.5%
32	4/9/2016		\$74,560,898	\$67,416,817	\$7,144,081	10.6%	\$20,100,629	\$18,594,844	\$1,505,785	8.1%	\$94,661,527	\$86,011,661	\$8,649,866	10.1%
33	4/16/2016		\$74,056,586	\$68,393,316	\$5,663,270	8.3%	\$20,677,413	\$18,104,632	\$2,572,781	14.2%	\$94,733,999	\$86,497,948	\$8,236,051	9.5%
34	4/23/2016		\$73,110,080	\$70,078,182	\$3,031,898	4.3%	\$20,313,339	\$17,957,150	\$2,356,189	13.1%	\$93,423,419	\$88,035,332	\$5,388,087	6.1%
35	4/30/2016		\$73,448,019	\$71,744,718	\$1,703,301	2.4%	\$22,666,626	\$18,961,113	\$3,705,513	19.5%	\$96,114,645	\$90,705,831	\$5,408,814	6.0%
36	5/7/2016			\$73,415,978				\$20,210,341				\$93,626,319		
37	5/14/2016			\$72,152,109				\$20,362,774				\$92,514,883		
38	5/21/2016			\$70,399,950				\$21,246,276				\$91,646,226		
39	5/28/2016			\$68,547,554				\$22,227,946				\$90,775,500		
40	6/4/2016			\$71,254,006				\$20,739,703				\$91,993,709		
41	6/11/2016			\$65,878,375				\$17,216,403				\$83,094,778		
42	6/18/2016			\$66,658,742				\$17,340,531				\$83,999,273		

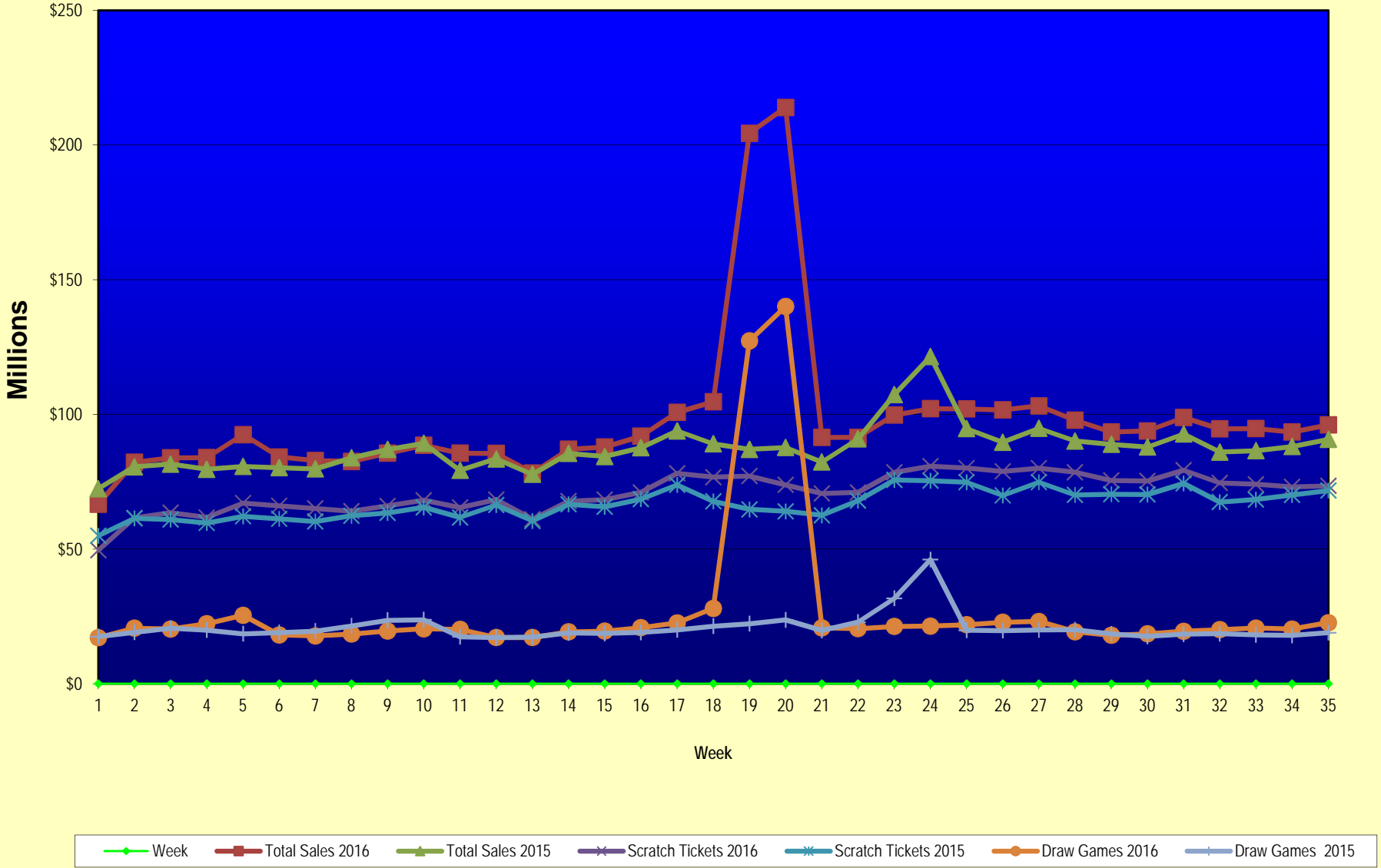
Texas Lottery Commission
Fiscal Year Over Year Change in Sales
Unaudited
FY 2016 Compared to FY 2015

			SCRATCH TICKETS				DRAW GAMES				TOTAL SALES			
FY 2016			FY 2016	FY 2015	Difference	% change - Cumulative Sales	FY 2016	FY 2015	Difference	% change - Cumulative Sales	FY 2016	FY 2015	Difference	% change - Cumulative Sales
Week	Week	Ending												
43	6/25/2016			\$65,282,276				\$16,873,368				\$82,155,644		
44	7/2/2016			\$67,757,752				\$18,007,540				\$85,765,292		
45	7/9/2016			\$64,718,254				\$18,203,985				\$82,922,239		
46	7/16/2016			\$64,957,977				\$18,792,785				\$83,750,762		
47	7/23/2016			\$62,541,241				\$18,229,965				\$80,771,206		
48	7/30/2016			\$66,468,460				\$17,742,489				\$84,210,949		
49	8/6/2016			\$62,412,598				\$17,331,374				\$79,743,972		
50	8/13/2016			\$62,089,389				\$17,501,599				\$79,590,988		
51	8/20/2016			\$62,437,148				\$17,779,458				\$80,216,606		
52	8/27/2016			\$61,403,206				\$18,529,560				\$79,932,766		
	8/31/2016 **			\$17,309,621				\$3,279,958				\$20,589,579		
Total thru Current Week			\$2,484,338,086	\$2,335,677,176	\$148,660,910	6.4%	\$943,014,274	\$726,722,564	\$216,291,711	29.8%	\$3,427,352,360	\$3,062,399,740	\$364,952,621	11.9%
Fiscal Year Total			\$2,484,338,086	\$3,481,361,812			\$943,014,274	\$1,048,338,613			\$3,427,352,360	\$4,529,700,425		

* FY 16 includes 5 days; FY 15 includes 6 days

** FY 16 includes 4 days; FY 15 includes 2 days

Texas Lottery Commission Fiscal Year Over Year Change in Sales



Note: Week 1 is not a full week of sales as this report is prepared on a Fiscal Year basis.

Texas Lottery Commission
Scratch Tickets by Price Point
Sales, Prize Expense, Sales Contribution and Payout Percentage With Year Over Year Changes
Unaudited

Fiscal Year	Price Point	# of Active Games	FY Sales	% of Scratch Ticket Sales	Year over Year Change in Sales	FY Prize Expense	Year over Year Change in Prize Expense	FY Sales Contribution	Year over Year Change in Contribution	Average Prize Payout %	Year over Year Change in Payout %
2015	\$1.00	21	116,948,458	5.0%		71,004,140		45,944,318		60.7%	1.3%
Through	\$2.00	32	242,331,312	10.4%		159,322,579		83,008,733		65.7%	1.4%
5/2/2015	\$3.00	14	243,110,991	10.4%		160,286,476		82,824,515		65.9%	0.5%
	\$5.00	45	728,490,565	31.2%		494,913,722		233,576,844		67.9%	0.0%
	\$10.00	17	474,696,330	20.3%		333,901,927		140,794,403		70.3%	0.0%
	\$20.00	10	422,575,020	18.1%		316,817,153		105,757,867		75.0%	0.1%
	\$50.00	3	107,524,500	4.6%		83,571,620		23,952,880		77.7%	0.1%
Total		142	\$2,335,677,176			\$1,619,817,617		\$715,859,559		69.4%	0.6%
2016	\$1.00	18	111,173,288	4.5%		67,039,984		44,133,304		60.3%	-0.4%
thru	\$2.00	31	251,594,318	10.1%		164,082,044		87,512,274		65.2%	-0.4%
4/30/2016	\$3.00	12	187,039,665	7.5%		123,191,384		63,848,281		65.9%	-0.1%
	\$5.00	53	819,243,595	33.0%		556,598,024		262,645,571		67.9%	0.0%
	\$10.00	17	489,981,820	19.7%		343,479,656		146,502,164		70.1%	-0.2%
	\$20.00	12	505,228,700	20.3%		378,647,654		126,581,046		74.9%	0.0%
	\$50.00	4	120,076,700	4.8%		93,392,829		26,683,871		77.8%	0.0%
Total		147	\$2,484,338,086			\$1,726,431,576		\$757,906,510		69.5%	0.1%
Variance	\$1.00	-3	-5,775,170		-4.9%	-3,964,156	-5.6%	-1,811,014	-3.9%	-0.41%	
2016 to	\$2.00	-1	9,263,006		3.8%	4,759,465	3.0%	4,503,541	5.4%	-0.53%	
2015	\$3.00	-2	-56,071,326		-23.1%	-37,095,091	-23.1%	-18,976,235	-22.9%	-0.07%	
	\$5.00	8	90,753,030		12.5%	61,684,302	12.5%	29,068,728	12.4%	0.00%	
	\$10.00	0	15,285,490		3.2%	9,577,729	2.9%	5,707,761	4.1%	-0.24%	
	\$20.00	2	82,653,680		19.6%	61,830,501	19.5%	20,823,179	19.7%	-0.03%	
	\$50.00	1	12,552,200		11.7%	9,821,209	11.8%	2,730,991	11.4%	0.05%	
Total		5	\$148,660,910		6.4%	\$106,613,959	6.6%	\$42,046,951	5.9%	0.14%	

Notes - Scratch Ticket Variances

Texas Lottery Commission
Scratch Tickets by Price Point
Sales, Prize Expense, Sales Contribution and Payout Percentage With Year Over Year Changes
Unaudited

			FY 2016		FY 2015	Difference
Sales	\$1 - \$5		\$1,369,050,866		\$1,330,881,326	\$38,169,540
Prize Exp.	\$1 - \$5		\$910,911,436		\$885,526,916	\$25,384,520
Sales Cont.	\$1 - \$5		\$458,139,430		\$445,354,410	\$12,785,020
Prize Exp. %	\$1 - \$5		66.5%		66.5%	0.0%
			FY 2016		FY 2015	Difference
Sales	\$10 - \$50		\$1,115,287,220		\$1,004,795,850	\$110,491,370
Prize Exp.	\$10 - \$50		\$815,520,140		\$734,290,700	\$81,229,439
Sales Cont.	\$10 - \$50		\$299,767,080		\$270,505,150	\$29,261,931
Prize Exp. %	\$10 - \$50		73.1%		73.1%	0.0%
			FY 2016		FY 2015	Difference
Sales	Scratch		\$2,484,338,086		\$2,335,677,176	\$148,660,910
Prize Exp.	Scratch		\$1,726,431,576		\$1,619,817,617	\$106,613,959
Sales Cont.	Scratch		\$757,906,510		\$715,859,559	\$42,046,951
Prize Exp. %	Scratch		69.5%		69.4%	0.1%

			FY 2016		FY 2015	Difference
Sales	\$1 - \$10		\$1,859,032,686		\$1,805,577,656	\$53,455,030
Prize Exp.	\$1 - \$10		\$1,254,391,092		\$1,219,428,843	\$34,962,249
Sales Cont.	\$1 - \$10		\$604,641,594		\$586,148,813	\$18,492,781
Prize Exp. %	\$1 - \$10		67.5%		67.5%	-0.1%
			FY 2016		FY 2015	Difference
Sales	\$20 - \$50		\$625,305,400		\$530,099,520	\$95,205,880
Prize Exp.	\$20 - \$50		\$472,040,484		\$400,388,773	\$71,651,710
Sales Cont.	\$20 - \$50		\$153,264,916		\$129,710,747	\$23,554,170
Prize Exp. %	\$20 - \$50		75.5%		75.5%	0.0%
			FY 2016		FY 2015	Difference
Sales	Scratch		\$2,484,338,086		\$2,335,677,176	\$148,660,910
Prize Exp.	Scratch		\$1,726,431,576		\$1,619,817,617	\$106,613,959
Sales Cont.	Scratch		\$757,906,510		\$715,859,559	\$42,046,951
Prize Exp. %	Scratch		69.5%		69.4%	0.1%

Texas Lottery Commission
Weekly Sales Summary
& Comparison to Previous Week
 Unaudited

	Week Ending 4/30/2016	% of Sales	Week Ending 4/23/2016	% of Sales	\$ change	% change
	<u>THIS WEEK</u>		<u>LAST WEEK</u>			
Total Sales	<u>\$96,114,645</u>		<u>\$93,423,419</u>		<u>\$2,691,227</u>	2.88%
Scratch Tickets	<u>\$73,448,019</u>	76.4%	<u>\$73,110,080</u>	78.3%	<u>\$337,939</u>	0.46%
Lotto	\$2,075,979	2.2%	\$2,019,157	2.2%	\$56,822	2.81%
Lotto Extra	\$394,302	0.4%	\$377,799	0.4%	\$16,503	4.37%
Pick 3	\$4,950,931	5.2%	\$4,803,711	5.1%	\$147,220	3.06%
Pick 3 Sum It Up	\$101,225	0.1%	\$100,291	0.1%	\$934	0.93%
Cash Five	\$861,322	0.9%	\$848,658	0.9%	\$12,664	1.49%
Texas Two Step	\$1,063,843	1.1%	\$817,309	0.9%	\$246,534	30.16%
Mega Millions	\$2,442,563	2.5%	\$2,109,430	2.3%	\$333,133	15.79%
Megaplier	\$642,063	0.7%	\$570,565	0.6%	\$71,498	12.53%
Daily 4	\$1,792,240	1.9%	\$1,717,521	1.8%	\$74,719	4.35%
Daily 4 Sum It Up	\$97,874	0.1%	\$90,147	0.1%	\$7,727	8.57%
Powerball	\$6,414,863	6.7%	\$5,191,116	5.6%	\$1,223,747	23.57%
Power Play	\$848,318	0.9%	\$705,295	0.8%	\$143,023	20.28%
All or Nothing	\$559,358	0.6%	\$548,786	0.6%	\$10,572	1.93%
Texas Triple Chance	\$421,746	0.4%	\$413,554	0.4%	\$8,192	1.98%
Total Draw Game Sales	<u>\$22,666,626</u>		<u>\$20,313,339</u>		<u>\$2,353,288</u>	11.58%

* Totals may not sum due to rounding.

Texas Lottery Commission
Weekly Sales Summary
Unaudited

SCRATCH TICKETS
TOP TEN SELLING GAMES

For the week ending: 4/30/2016

Rank	Price Point	Game	Sales (Millions)
1	\$ 20	100X THE CASH	\$ 5.214
2	\$ 10	THE BIG MONEY SUPER TICKET	\$ 4.947
3	\$ 5	SUPER LOTERIA	\$ 3.871
4	\$ 10	CASHWORD MULTIPLIER	\$ 3.650
5	\$ 20	HIT \$1,000,000	\$ 3.642
6	\$ 10	HIT \$500,000	\$ 3.275
7	\$ 50	HIGH ROLLER CASINO ACTION	\$ 3.209
8	\$ 3	BONUS CASHWORD	\$ 2.528
9	\$ 5	\$100,000 CASHWORD-O-RAMA	\$ 2.247
10	\$ 5	TEXA\$ CA\$H BLOWOUT	\$ 2.199

Texas Lottery Commission
Prize Payout Tracking Report
Unaudited

Through the week ending: 4/30/2016

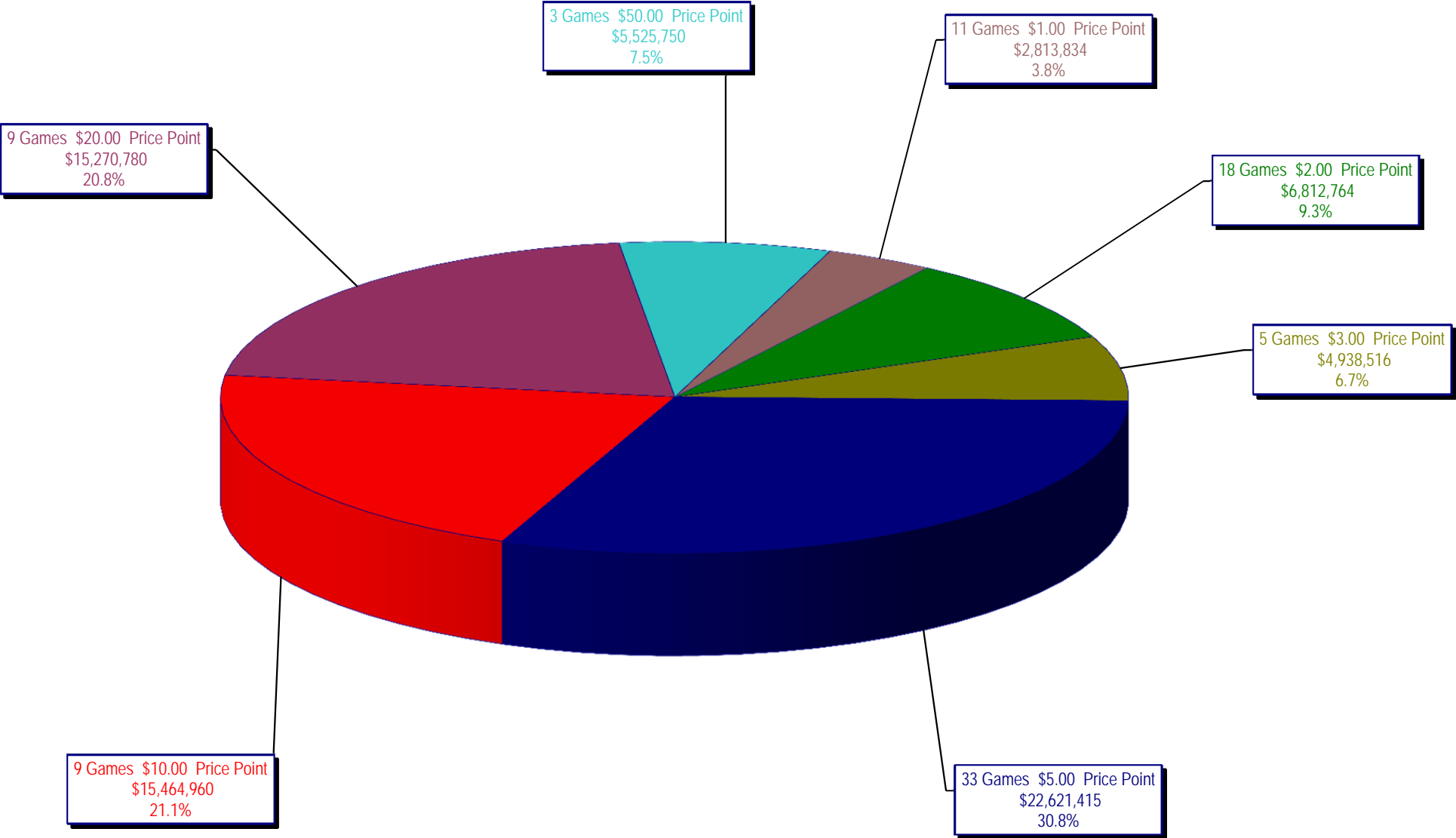
Draw Game Sales

		FY Sales Through Week Ending 4/30/2016		FY Prize Expense Through Week Ending 4/30/2016	Actual* Prize Payout	Base Payout (Prize Pool)
Lotto	\$	83,494,715	\$	47,699,098	57.13%	50.00%
Lotto Extra		14,558,670		7,734,236	53.12%	53.70%
Pick 3		171,445,785		85,891,010	50.10%	50.00%
Pick 3 Sum It Up		3,512,443		1,655,708	47.14%	50.00%
Cash Five		31,227,281		15,613,641	50.00%	50.00%
Texas Two Step		36,116,591		18,369,294	50.86%	50.00%
Mega Millions		83,579,816		42,780,248	51.18%	50.00%**
Megaplier		21,311,359		10,690,865	50.17%	N/A
Daily 4		60,443,875		29,553,675	48.89%	50.00%
Daily 4 Sum It Up		3,195,849		1,201,910	37.61%	50.00%
Powerball		356,350,818		178,384,127	50.06%	50.00%**
Power Play		39,530,427		19,793,160	50.07%	N/A
All or Nothing		20,930,264		11,236,280	53.68%	55.98%
Monopoly		0		(22,993)	0.00%	50.00%
Texas Triple Chance		17,316,382		10,242,212	59.15%	54.42%
Totals	\$	943,014,274	\$	480,822,470	50.99%	

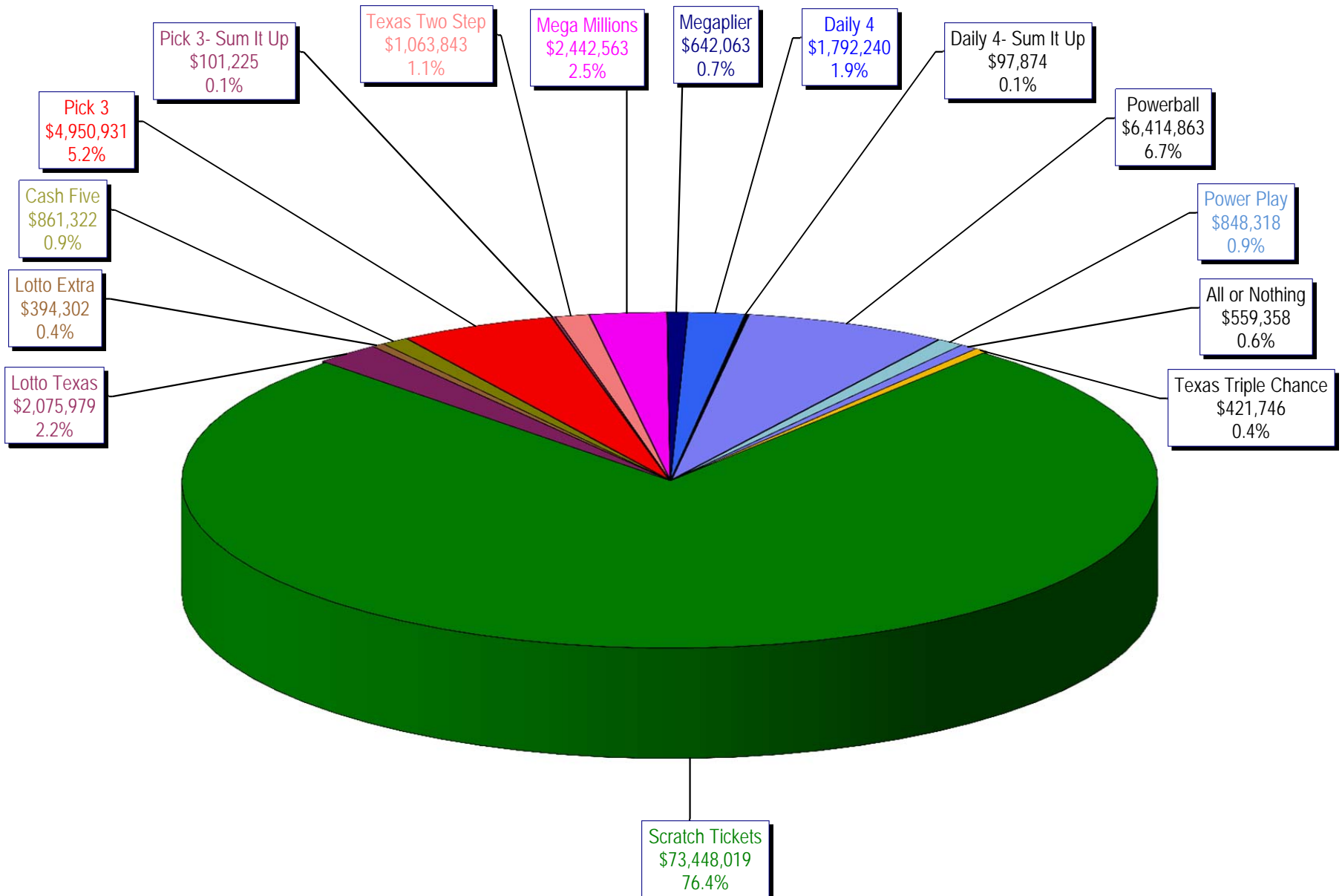
* Before Unclaimed Prizes

** Estimated; depends on # of guaranteed prizes won in Texas

Texas Lottery Commission
Scratch Ticket Sales
For the week ending 4/30/16
(Unaudited)



Texas Lottery Commission
All Game Sales
For the week ending 4/30/16
(Unaudited)



Texas Lottery Commission - Weekly Sales Summary for FY 2016 (Unaudited)

Week Ended	Scratch Tickets	New Games & Dates	Lotto Texas	Jackpot		Lotto Extra	Pick 3	Pick 3 Sum It Up	Cash Five	Texas Two Step	Jackpot		Mega Millions	Jackpot		MegaMillier	Daily 4	Daily 4 Sum It Up	Powerball	Jackpot		Power Play	All or Nothing	Texas Triple Chance	Total	Per Cap.
				W	S						M	TH		T	F					W	S					
9/5/2015*	66,843,870	0	2,788,509	25	26	466,121	5,249,348	117,979	956,126	1,253,100	425	575	2,366,640	74	85	608,901	1,725,027	93,067	3,586,482	120	133	484,769	675,614		87,215,551	3.24
9/12/2015	61,566,291	1717 (\$1.N); 1718 (\$5.N); 1748 (\$10.N); 1696 (\$3.N) - 9/08/15	2,793,428	26.5	27.75	465,451	4,974,238	103,203	919,536	1,423,604	725	950	2,511,039	95	106	629,091	1,641,226	86,539	3,927,126	149	167	518,060	638,384		82,197,213	3.05
9/19/2015	63,530,657	0	2,845,557	28.25	29.5	475,307	4,715,566	95,242	928,275	854,109	200	225	1,817,155	15	20	487,946	1,647,829	81,483	5,082,782	185	208	639,614	656,388		83,857,910	3.11
9/26/2015	61,731,400	1720 (\$2.N); 1721 (\$5.N); 1715 (\$5.N) - 9/21/15	2,815,638	30	30.75	468,584	4,735,629	97,118	924,334	1,048,752	300	450	1,860,438	25	31	499,201	1,628,350	82,200	6,648,092	235	267	790,427	653,528		83,983,690	3.12
10/3/2015	67,048,415	0	3,034,763	31.5	32.25	502,043	4,925,789	100,522	919,217	1,347,552	600	725	2,053,673	39	47	539,290	1,662,320	88,291	8,036,576	301	40	884,785	616,594	725,376	92,485,206	3.43
10/10/2015	66,049,706	1722 (\$1.N); 1723 (\$5.N); 1711 (\$20.N) - 10/05/15	2,175,801	5	5.25	366,506	4,803,855	97,005	899,614	1,141,865	925	200	2,113,720	55	65	535,411	1,636,542	86,150	2,572,748	50	60	372,480	593,616	743,664	84,188,683	3.12
10/17/2015	65,073,593	0	2,133,286	5	5	358,076	4,629,752	92,453	876,040	824,622	200	225	2,286,703	75	84	568,477	1,576,323	79,576	2,638,956	70	80	377,157	580,870	754,124	82,850,007	3.07
10/24/2015	64,087,437	1724 (\$2.N); 1769 (\$5.N); 1726 (\$10.N) - 10/19/15	2,099,176	5.25	5.5	358,217	4,515,381	92,071	860,960	991,931	300	425	2,600,946	93	105	626,019	1,553,788	80,225	2,946,077	90	100	411,192	562,378	752,104	82,537,901	3.06
10/31/2015	66,025,374	0	2,165,101	5.75	6	368,559	4,653,961	91,360	873,751	944,275	550	200	2,945,749	117	129	695,705	1,621,009	85,560	3,327,954	110	127	455,266	573,258	766,642	85,593,524	3.18
11/7/2015	68,137,192	1727 (\$1.N); 1728 (\$2.N); 1729 (\$5.N) - 11/02/15	2,232,267	6.25	6.5	379,508	4,977,693	96,887	891,111	911,796	225	300	3,416,380	144	164	795,028	1,688,298	86,418	3,071,581	142	40	425,312	599,980	826,093	88,535,543	3.28
11/14/2015	65,449,428	0	2,185,621	6.75	7	373,102	4,726,211	93,030	870,215	1,087,101	425	575	4,139,462	180	200	938,757	1,614,727	82,536	2,437,413	50	60	357,760	574,596	688,852	85,618,810	3.18
11/21/2015	68,364,421	1730 (\$2.N); 1783 (\$2.N); 1731 (\$5.N) - 11/16/15 1778 (\$2.N) - 11/18/15	2,173,857	7.25	7.5	369,519	4,674,293	88,988	862,630	825,054	200	225	1,830,909	15	20	489,485	1,632,096	82,077	2,553,907	70	80	370,594	586,348	634,850	85,539,027	3.17
11/28/2015	61,091,628	0	2,113,171	7.75	8.25	364,947	4,523,108	87,438	825,047	904,825	300	400	1,785,419	25	31	478,828	1,591,416	82,363	2,886,666	90	100	406,251	546,614	572,902	78,260,621	2.90
12/5/2015	67,830,827	1733 (\$5.N) - 12/5/15	2,245,481	8.75	9.5	385,346	5,020,926	94,445	898,598	957,116	525	200	2,073,099	39	47	545,451	1,789,318	94,198	3,432,248	110	127	467,917	603,222	645,054	87,083,245	3.23
12/12/2015	68,324,452	1751 (\$1.N); 1780 (\$2.N); 1784 (\$5.N) - 12/07/15	2,281,004	10.25	10.75	391,281	4,980,397	94,549	877,611	815,777	225	200	2,160,601	57	66	555,974	1,746,314	86,684	3,835,044	145	164	508,111	592,212	603,850	87,853,860	3.26
12/19/2015	71,041,258	0	2,326,771	11.5	12.25	400,223	4,980,685	95,154	879,423	888,674	225	300	2,322,855	74	85	592,792	1,796,682	92,401	4,707,013	180	202	600,420	573,754	567,994	91,866,098	3.41
12/26/2015	78,125,965	1736 (\$5.N); 1740 (\$20.N) - 12/21/15 1789 (\$3.N) - 12/22/15	2,422,285	12.75	13.5	417,003	4,863,405	91,522	860,361	1,106,519	400	550	2,624,875	94	104	637,157	1,725,445	87,146	5,941,638	227	255	728,720	548,978	531,364	100,712,382	3.74
1/2/2016	76,712,975	0	2,598,993	14.25	15.25	446,634	4,857,347	95,570	883,605	857,640	200	225	3,175,442	117	130	756,602	1,731,866	91,457	10,213,886	300	334	1,168,791	559,472	535,576	104,685,855	3.88
1/9/2016	77,136,541	1738 (\$1.N); 1735 (\$2.N); 1737 (\$10.N) - 1/04/16	3,569,884	16	17	580,778	4,782,398	102,725	899,480	1,029,458	300	425	4,896,815	145	165	1,100,345	1,668,434	91,670	98,440,136	500	900	8,915,982	589,972	621,402	204,426,019	7.58
1/16/2016	73,858,865	0	3,543,250	18	19	585,402	4,666,496	105,064	901,254	834,973	200	225	2,581,249	15	22	661,350	1,658,823	94,886	112,171,706	1.5	40	11,071,288	613,248	615,138	213,962,991	7.94
1/23/2016	70,665,700	1747 (\$5.N); 1790 (\$5.N); 1786 (\$3.N) - 1/18/16	2,864,110	19.5	20.25	492,400	4,696,016	104,467	945,128	846,809	200	225	2,033,849	30	39	535,675	1,742,249	90,096	4,651,362	50	60	646,626	622,838	510,120	91,447,445	3.39
1/30/2016	71,051,685	0	2,291,772	5	5.25	405,017	4,976,880	103,912	948,507	850,282	200	225	2,106,150	48	56	559,777	1,825,583	100,694	4,470,995	75	96	639,118	647,428	507,286	91,485,086	3.39
2/6/2016	78,458,428	1700 (\$1.N); 1702 (\$5.N); 1745 (\$20.N) - 2/01/16	2,298,351	5.5	5.75	412,187	5,095,888	106,149	980,363	1,020,644	300	425	2,198,934	63	71	579,927	1,833,296	99,283	4,823,108	112	136	683,319	650,426	492,926	99,733,228	3.70
2/13/2016	80,754,850	0	2,240,742	6	6.25	405,702	5,332,774	111,268	938,662	848,340	200	225	2,236,840	80	87	592,165	1,918,261	104,613	4,856,599	157	176	684,114	643,040	478,800	102,146,769	3.79
2/20/2016	80,078,271	1677 (\$2.N); 1625 (\$5.N) - 2/15/16	2,219,682	6.5	6.75	405,997	5,261,755	112,333	922,062	1,042,317	300	425	2,348,026	94	104	612,581	1,903,450	105,785	5,158,458	189	212	714,054	637,966	466,916	101,989,653	3.78

Texas Lottery Commission - Weekly Sales Summary for FY 2016 (Unaudited)

Week Ended	Scratch Tickets	New Games & Dates	Lotto Texas	Jackpot W S	Lotto Extra	Pick 3	Pick 3 Sum It Up	Cash Five	Texas Two Step	Jackpot M TH	Mega Millions	Jackpot T F	Megaplier	Daily 4	Daily 4 Sum It Up	Powerball	Jackpot W S	Power Play	All or Nothing	Texas Triple Chance	Total	Per Cap.
2/27/2016	78,832,217	0	2,219,240	7 7.25	408,736	5,046,436	106,701	906,814	1,388,361	575 750	2,482,721	114 125	639,604	1,848,625	96,548	5,807,303	236 266	793,600	624,106	454,291	101,655,303	3.77
3/5/2016	80,019,524	1798 (\$3.N); 1796 (\$5.N) - 2/29/16	2,269,811	7.5 7.75	419,311	5,370,371	115,581	944,505	1,944,339	950 1,175	2,720,417	135 144	706,160	1,962,847	105,379	4,803,055	292 40	675,939	647,306	461,886	103,166,430	3.83
3/12/2016	78,524,214	1746 (\$1.N); 1795 (\$2.N); 1744 (\$5.N); 1719 (\$10.N) - 3/7/16 1797 (\$10.N) - 3/9/16	2,170,297	8 8.75	403,101	5,053,423	109,902	910,388	1,366,495	1,450 200	2,226,025	157 15	593,134	1,852,906	98,700	3,014,836	50 60	463,740	613,990	434,688	97,835,839	3.63
3/19/2016	75,446,960	0	2,172,437	9.25 10	402,218	4,900,867	102,413	890,351	841,665	200 225	1,735,447	20 25	493,521	1,790,457	95,669	3,098,598	70 80	473,822	584,322	419,224	93,447,960	3.47
3/26/2016	75,293,759	1765 (\$2.N); 1739 (\$5.N); 1794 (\$5.N) - 3/21/16	2,203,026	10.5 11.25	407,953	4,968,753	103,551	877,783	824,560	200 200	1,791,339	30 35	505,992	1,802,025	95,644	3,463,026	90 101	517,781	581,954	410,578	93,847,723	3.48
4/2/2016	79,316,221	0	2,122,422	11.75 5	394,135	5,261,943	110,824	894,088	935,633	225 300	1,916,857	43 50	531,849	1,817,508	100,053	3,830,324	116 135	558,131	597,500	411,296	98,798,784	3.67
4/9/2016	74,560,898	1697 (\$1.N); 1791 (\$5.N); 1792 (\$5.N); 1753 (\$20.N) - 4/04/16	2,038,934	5.25 5.5	378,330	5,304,473	108,007	891,933	1,249,036	425 575	1,955,604	57 65	534,602	1,848,661	100,773	4,086,953	148 168	583,012	597,536	422,776	94,661,527	3.51
4/16/2016	74,056,586	0	2,040,155	5.75 6	379,360	5,049,570	103,794	871,898	1,516,463	750 950	2,033,797	72 80	550,669	1,750,927	95,758	4,646,599	184 205	644,230	568,884	425,310	94,733,999	3.51
4/23/2016	73,110,080	1754 (\$2.N); 1803 (\$5.N); 1756 (\$50.N) - 4/18/16	2,019,157	6.25 6.5	377,799	4,803,711	100,291	848,658	817,309	200 225	2,109,430	89 97	570,565	1,717,521	90,147	5,191,116	227 251	705,295	548,786	413,554	93,423,419	3.47
4/30/2016	73,448,019	0	2,075,979	6.75 7	394,302	4,950,931	101,225	861,322	1,063,843	300 425	2,442,563	108 118	642,063	1,792,240	97,874	6,414,863	282 314	848,318	559,358	421,746	96,114,645	3.57
weekly change	0.5%		2.8%		4.4%	3.1%	0.9%	1.5%	30.2%		15.8%		12.5%	4.4%	8.6%	23.6%		20.3%	1.9%	2.0%	2.9%	
	SALES		SALES		SALES	SALES	SALES	SALES	SALES		SALES		SALES	SALES	SALES	SALES		SALES	SALES	SALES	SALES	% of Sales
Calendar Year to date	1,316,778,298		41,473,657		7,442,040	87,104,299	1,838,610	15,702,404	18,500,441		40,927,576		10,678,278	31,280,134	1,693,892	283,789,683		30,168,397	10,499,548	8,134,051	1,906,011,307	100.0%
Fiscal Year to date 2016	2,484,338,086		83,494,715		14,558,670	171,445,785	3,512,443	31,227,281	36,116,591		83,579,816		21,311,359	60,443,875	3,195,849	356,350,818		39,530,427	20,930,264	17,316,382	3,427,352,360	100.0%
*Full week includes 2 days from FY15																						