



WEEKLY SALES SUMMARY

Unaudited

Week Ending: 05/02/2009

Texas Lottery Commission
Fiscal Year to Date Sales Comparison
Unaudited

Through the week ending 05/02/2009 (35 weeks)

Sales by Game	FY 2007 *	FY 2008 **	FY 2009	\$ Change		% Change	
				FY 2009 to FY 2007	FY 2009 to FY 2008	FY 2009 to FY 2007	FY 2009 to FY 2008
Instant	\$ 1,925,919,360	\$ 1,908,250,435	\$ 1,867,050,682	\$ -58,868,678	\$ -41,199,753	-3.1%	-2.2%
Lotto Texas	166,587,196	139,533,645	128,551,743	-38,035,453	-10,981,902	-22.8%	-7.9%
Pick 3	212,085,618	194,607,088	193,937,109	-18,148,509	-669,979	-8.6%	-0.3%
Pick 3 Sum It Up	-	4,324,906	4,080,534	4,080,534	-244,372	-	-5.7%
Cash 5	59,449,252	51,749,978	48,198,703	-11,250,549	-3,551,275	-18.9%	-6.9%
Texas Two Step	35,055,317	32,283,644	34,421,371	-633,946	2,137,727	-1.8%	6.6%
Mega Millions	124,656,469	115,994,381	134,385,573	9,729,104	18,391,192	7.8%	15.9%
Megaplier	28,879,512	27,493,316	30,283,884	1,404,372	2,790,568	4.9%	10.1%
Daily 4	-	28,647,033	30,457,737	30,457,737	1,810,704	-	6.3%
Daily 4 Sum It Up	-	6,361,358	3,695,638	3,695,638	-2,665,721	-	-41.9%
Total	\$ 2,552,632,724	\$ 2,509,245,783	\$ 2,475,062,973	\$ -77,569,751	\$ -34,182,810	-3.0%	-1.4%

* 3 extra days in 2007 ** 2 extra days in 2008

Texas Lottery Commission
Fiscal Year Over Year Change in Sales
Unaudited
FY 2009 Compared to FY 2008

Week	FY 2009 Week Ending	INSTANT TICKETS				ON-LINE GAMES				TOTAL SALES			
		FY 2009	FY 2008	Difference	% change - Cumulative Sales	FY 2009	FY 2008	Difference	% change - Cumulative Sales	FY 2009	FY 2008	Difference	% change - Cumulative Sales
1	9/6/2008**	\$44,890,104	\$62,376,229	(\$17,486,125)	-28.0%	\$14,722,011	\$19,372,224	(\$4,650,213)	-24.0%	\$59,612,115	\$81,748,453	(\$22,136,338)	-27.1%
2	9/13/2008	\$46,309,551	\$52,458,866	(\$6,149,315)	-20.6%	\$13,704,860	\$16,926,163	(\$3,221,303)	-21.7%	\$60,014,411	\$69,385,029	(\$9,370,618)	-20.8%
3	9/20/2008	\$42,923,171	\$49,998,934	(\$7,075,763)	-18.6%	\$12,291,263	\$15,792,283	(\$3,501,020)	-21.8%	\$55,214,434	\$65,791,217	(\$10,576,783)	-19.4%
4	9/27/2008	\$47,042,801	\$49,894,175	(\$2,851,374)	-15.6%	\$14,222,339	\$14,800,514	(\$578,175)	-17.9%	\$61,265,140	\$64,694,689	(\$3,429,549)	-16.2%
5	10/4/2008	\$50,747,162	\$53,486,863	(\$2,739,701)	-13.5%	\$15,784,472	\$16,618,430	(\$833,958)	-15.3%	\$66,531,634	\$70,105,293	(\$3,573,659)	-14.0%
6	10/11/2008	\$49,763,789	\$50,918,020	(\$1,154,231)	-11.7%	\$15,622,498	\$15,601,410	\$21,088	-12.9%	\$65,386,287	\$66,519,430	(\$1,133,143)	-12.0%
7	10/18/2008	\$49,299,053	\$50,532,253	(\$1,233,200)	-10.5%	\$15,167,940	\$15,682,666	(\$514,726)	-11.6%	\$64,466,993	\$66,214,919	(\$1,747,926)	-10.7%
8	10/25/2008	\$49,977,581	\$50,347,450	(\$369,869)	-9.3%	\$14,525,843	\$15,586,516	(\$1,060,673)	-11.0%	\$64,503,424	\$65,933,966	(\$1,430,542)	-9.7%
9	11/1/2008	\$50,346,542	\$53,953,733	(\$3,607,191)	-9.0%	\$14,838,845	\$16,775,983	(\$1,937,139)	-11.1%	\$65,185,387	\$70,729,716	(\$5,544,330)	-9.5%
10	11/8/2008	\$54,860,087	\$53,635,090	\$1,224,997	-7.9%	\$16,057,069	\$15,912,791	\$144,278	-9.9%	\$70,917,156	\$69,547,881	\$1,369,275	-8.3%
11	11/15/2008	\$53,484,812	\$51,254,401	\$2,230,411	-6.8%	\$15,829,819	\$15,797,076	\$32,744	-9.0%	\$69,314,631	\$67,051,477	\$2,263,155	-7.3%
12	11/22/2008	\$52,806,511	\$50,897,817	\$1,908,694	-5.9%	\$16,460,748	\$15,801,720	\$659,028	-7.9%	\$69,267,259	\$66,699,537	\$2,567,722	-6.4%
13	11/29/2008	\$52,199,741	\$53,913,115	(\$1,713,374)	-5.7%	\$17,397,576	\$17,055,505	\$342,072	-7.1%	\$69,597,317	\$70,968,620	(\$1,371,303)	-6.0%
14	12/6/2008	\$56,731,851	\$55,702,697	\$1,029,154	-5.1%	\$20,363,789	\$17,900,717	\$2,463,073	-5.5%	\$77,095,640	\$73,603,414	\$3,492,227	-5.2%
15	12/13/2008	\$54,109,617	\$53,703,516	\$406,101	-4.7%	\$22,952,228	\$17,820,841	\$5,131,387	-3.0%	\$77,061,845	\$71,524,357	\$5,537,488	-4.3%
16	12/20/2008	\$55,777,328	\$57,592,769	(\$1,815,441)	-4.6%	\$15,833,517	\$17,436,233	(\$1,602,716)	-3.4%	\$71,610,845	\$75,029,002	(\$3,418,157)	-4.3%
17	12/27/2008	\$57,597,885	\$57,696,003	(\$98,118)	-4.3%	\$15,851,771	\$14,743,680	\$1,108,091	-2.9%	\$73,449,656	\$72,439,683	\$1,009,973	-4.0%
18	1/3/2009	\$57,582,115	\$57,935,952	(\$353,837)	-4.1%	\$16,900,028	\$15,704,450	\$1,195,578	-2.3%	\$74,482,143	\$73,640,402	\$841,741	-3.7%
19	1/10/2009	\$54,250,945	\$55,360,542	(\$1,109,597)	-4.0%	\$16,203,220	\$15,691,540	\$511,680	-2.0%	\$70,454,165	\$71,052,082	(\$597,917)	-3.5%
20	1/17/2009	\$51,625,339	\$54,920,166	(\$3,294,827)	-4.1%	\$15,701,605	\$16,259,669	(\$558,064)	-2.1%	\$67,326,944	\$71,179,835	(\$3,852,891)	-3.6%
21	1/24/2009	\$52,789,573	\$54,439,890	(\$1,650,317)	-4.1%	\$15,897,473	\$16,691,724	(\$794,251)	-2.2%	\$68,687,046	\$71,131,614	(\$2,444,568)	-3.6%
22	1/31/2009	\$55,453,471	\$57,464,382	(\$2,010,911)	-4.0%	\$16,908,272	\$17,968,227	(\$1,059,955)	-2.4%	\$72,361,743	\$75,432,609	(\$3,070,866)	-3.7%
23	2/7/2009	\$62,247,711	\$60,715,019	\$1,532,692	-3.7%	\$18,354,314	\$20,097,338	(\$1,743,025)	-2.7%	\$80,602,025	\$80,812,357	(\$210,333)	-3.5%
24	2/14/2009	\$60,509,056	\$57,093,143	\$3,415,913	-3.3%	\$19,218,078	\$22,179,908	(\$2,961,831)	-3.3%	\$79,727,134	\$79,273,051	\$454,083	-3.3%
25	2/21/2009	\$59,194,623	\$57,627,047	\$1,567,576	-3.0%	\$21,098,199	\$27,230,539	(\$6,132,340)	-4.5%	\$80,292,822	\$84,857,586	(\$4,564,764)	-3.4%
26	2/28/2009	\$58,857,216	\$55,591,667	\$3,265,549	-2.7%	\$24,116,924	\$17,016,118	\$7,100,806	-2.8%	\$82,974,140	\$72,607,785	\$10,366,355	-2.7%
27	3/7/2009	\$59,552,257	\$56,837,481	\$2,714,776	-2.4%	\$23,995,136	\$16,690,193	\$7,304,943	-1.1%	\$83,547,393	\$73,527,674	\$10,019,719	-2.1%
28	3/14/2009	\$53,754,084	\$54,587,112	(\$833,028)	-2.4%	\$18,769,831	\$16,448,165	\$2,321,667	-0.6%	\$72,523,915	\$71,035,277	\$1,488,639	-1.9%
29	3/21/2009	\$52,581,107	\$53,098,937	(\$517,830)	-2.3%	\$15,903,038	\$16,639,184	(\$736,146)	-0.7%	\$68,484,145	\$69,738,121	(\$1,253,976)	-1.9%
30	3/28/2009	\$52,560,961	\$53,933,689	(\$1,372,728)	-2.3%	\$16,094,933	\$17,698,625	(\$1,603,692)	-1.0%	\$68,655,894	\$71,632,314	(\$2,976,420)	-2.0%
31	4/4/2009	\$56,249,759	\$57,598,982	(\$1,349,223)	-2.3%	\$17,357,002	\$17,665,411	(\$308,409)	-1.0%	\$73,606,761	\$75,264,393	(\$1,657,632)	-2.0%
32	4/11/2009	\$54,440,987	\$53,954,185	\$486,802	-2.2%	\$17,660,600	\$15,860,784	\$1,799,816	-0.7%	\$72,101,587	\$69,814,969	\$2,286,618	-1.9%
33	4/18/2009	\$52,755,834	\$53,946,736	(\$1,190,902)	-2.2%	\$18,469,585	\$16,452,676	\$2,016,909	-0.3%	\$71,225,419	\$70,399,412	\$826,007	-1.8%
34	4/25/2009	\$51,450,968	\$51,533,006	(\$82,038)	-2.2%	\$20,216,898	\$16,873,949	\$3,342,950	0.3%	\$71,667,866	\$68,406,955	\$3,260,912	-1.6%
35	5/2/2009	\$52,327,090	\$53,250,568	(\$923,478)	-2.2%	\$23,520,573	\$18,202,103	\$5,318,471	1.2%	\$75,847,663	\$71,452,671	\$4,394,993	-1.4%
36	5/9/2009		\$54,060,849				\$18,422,562				\$72,483,411		
37	5/16/2009		\$54,010,641				\$20,728,360				\$74,739,001		
38	5/23/2009		\$50,377,032				\$15,461,384				\$65,838,416		
39	5/30/2009		\$49,545,080				\$15,175,370				\$64,720,450		
40	6/6/2009		\$53,702,986				\$15,982,166				\$69,685,152		

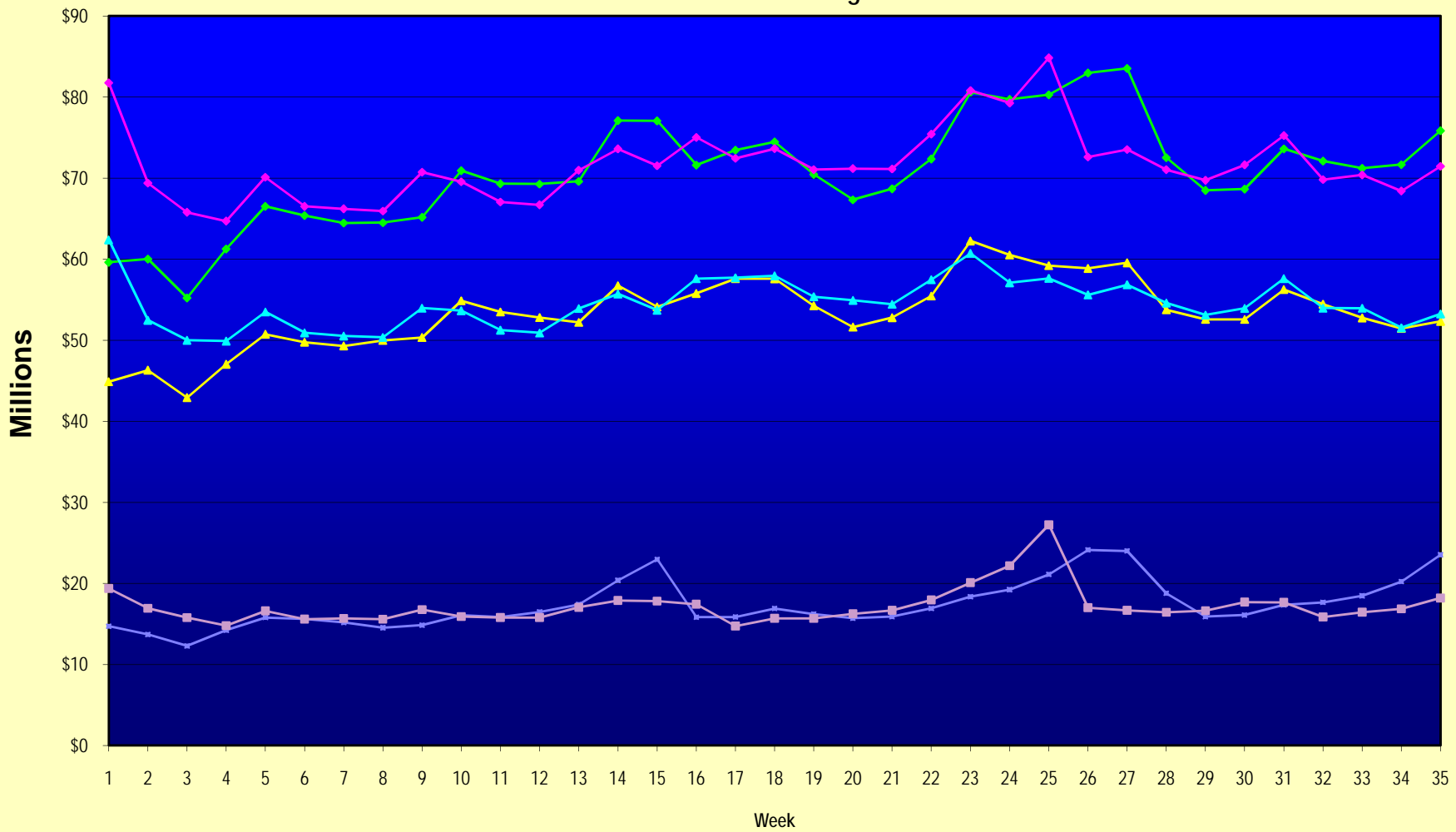
Note: Week 1 is not a full week of sales as this report is prepared on a Fiscal Year basis.

Texas Lottery Commission
Fiscal Year Over Year Change in Sales
Unaudited
FY 2009 Compared to FY 2008

Week	FY 2009 Week Ending	INSTANT TICKETS				ON-LINE GAMES				TOTAL SALES			
		FY 2009	FY 2008	Difference	% change - Cumulative Sales	FY 2009	FY 2008	Difference	% change - Cumulative Sales	FY 2009	FY 2008	Difference	% change - Cumulative Sales
41	6/13/2009		\$51,171,483				\$16,589,087				\$67,760,570		
42	6/20/2009		\$50,650,362				\$15,728,484				\$66,378,846		
43	6/27/2009		\$49,258,266				\$15,250,905				\$64,509,171		
44	7/4/2009		\$53,393,355				\$16,270,619				\$69,663,974		
45	7/11/2009		\$53,127,756				\$16,914,922				\$70,042,678		
46	7/18/2009		\$51,593,146				\$17,752,738				\$69,345,884		
47	7/25/2009		\$49,902,181				\$16,706,145				\$66,608,326		
48	8/1/2009		\$49,605,420				\$16,254,383				\$65,859,803		
49	8/8/2009		\$50,961,907				\$16,770,496				\$67,732,403		
50	8/15/2009		\$49,452,511				\$16,749,487				\$66,201,998		
51	8/22/2009		\$49,249,518				\$17,286,302				\$66,535,820		
52	8/29/2009		\$49,468,928				\$18,109,997				\$67,578,925		
53	9/5/2009		\$6,054,239				\$493,109				\$6,547,348		
Total thru Current Week		\$1,867,050,682	\$1,908,250,435	(\$41,199,753)	-2.2%	\$608,012,291	\$600,995,348	\$7,016,943	1.2%	\$2,475,062,973	\$2,509,245,783	(\$34,182,810)	-1.4%
Fiscal Year Total		\$1,867,050,682	\$2,783,836,095			\$608,012,291	\$887,641,858			\$2,475,062,973	\$3,671,477,953		

** FY 2009 includes 6 days; FY 2008 includes 8 days
FY 2009 average daily sales are \$9,242,258. Two days at average daily sales are \$18,484,516.

Texas Lottery Commission Fiscal Year Over Year Change in Sales



Note: Week 1 is not a full week of sales as this report is prepared on a Fiscal Year basis.

Texas Lottery Commission
Instant Tickets by Price Point
Sales, Prize Expense, Sales Contribution and Payout Percentage With Year Over Year Changes
Unaudited

Fiscal Year	Price Point	# of Active Games	FY Sales	% of Instant Ticket Sales	Year over Year Change in Sales	FY Prize Expense	Year over Year Change in Prize Expense	FY Sales Contribution	Year over Year Change in Contribution	Average Prize Payout %	Year over Year Change in Payout %
2008	\$1.00	43	158,478,132	8.3%		95,268,777		63,209,355		60.1%	0.0%
thru	\$2.00	50	313,806,456	16.4%		204,372,708		109,433,748		65.1%	0.4%
5/3/2008	\$3.00	16	169,445,037	8.9%		111,364,099		58,080,938		65.7%	-0.1%
	\$5.00	44	529,267,810	27.7%		359,308,371		169,959,439		67.9%	-0.1%
	\$7.00	12	110,668,089	5.8%		75,264,852		35,403,237		68.0%	0.1%
	\$10.00	18	286,484,116	15.0%		200,422,185		86,061,931		70.0%	-0.7%
	\$20.00	8	136,747,600	7.2%		98,285,259		38,462,341		71.9%	-0.1%
	\$25.00	2	49,413,025	2.6%		35,877,195		13,535,830		72.6%	0.3%
	\$30.00	3	44,670,570	2.3%		32,335,620		12,334,950		72.4%	0.2%
	\$50.00	2	109,269,600	5.7%		78,835,823		30,433,777		72.1%	0.0%
Total		198	\$1,908,250,435			\$1,291,334,888		\$616,915,547		67.7%	0.2%
2009	\$1.00	41	163,432,214	8.8%		98,280,583		65,151,631		60.1%	0.1%
thru	\$2.00	38	319,693,308	17.1%		208,403,237		111,290,071		65.2%	-0.1%
5/2/2009	\$3.00	16	195,357,012	10.5%		128,233,091		67,123,921		65.6%	-0.1%
	\$5.00	43	573,963,474	30.7%		390,342,556		183,620,918		68.0%	0.1%
	\$7.00	8	95,861,549	5.1%		65,192,121		30,669,428		68.0%	0.0%
	\$10.00	18	265,512,930	14.2%		185,774,640		79,738,290		70.0%	0.0%
	\$20.00	8	162,070,040	8.7%		116,286,498		45,783,542		71.8%	0.0%
	\$25.00	1	2,372,325	0.1%		1,725,527		646,798		72.7%	0.2%
	\$30.00	3	10,024,230	0.5%		7,263,928		2,760,302		72.5%	0.1%
	\$50.00	4	78,763,600	4.2%		57,641,121		21,122,479		73.2%	1.4%
Total		180	\$1,867,050,682			\$1,259,143,304		\$607,907,378		67.4%	-0.3%
Variance	\$1.00	-2	4,954,082		3.1%	3,011,806	3.2%	1,942,276	3.1%	0.02%	
2009 to	\$2.00	-12	5,886,852		1.9%	4,030,529	2.0%	1,856,323	1.7%	0.06%	
2008	\$3.00	0	25,911,975		15.3%	16,868,992	15.1%	9,042,983	15.6%	-0.08%	
	\$5.00	-1	44,695,664		8.4%	31,034,185	8.6%	13,661,479	8.0%	0.12%	
	\$7.00	-4	-14,806,540		-13.4%	-10,072,731	-13.4%	-4,733,809	-13.4%	0.00%	
	\$10.00	0	-20,971,186		-7.3%	-14,647,544	-7.3%	-6,323,642	-7.3%	0.01%	
	\$20.00	0	25,322,440		18.5%	18,001,239	18.3%	7,321,201	19.0%	-0.12%	
	\$25.00	-1	-47,040,700		-95.2%	-34,151,668	-95.2%	-12,889,032	-95.2%	0.13%	
	\$30.00	0	-34,646,340		-77.6%	-25,071,692	-77.5%	-9,574,648	-77.6%	0.08%	
	\$50.00	2	-30,506,000		-27.9%	-21,194,702	-26.9%	-9,311,298	-30.6%	1.03%	
Total		-18	-\$41,199,753		-2.2%	-\$32,191,584	-2.5%	-\$9,008,169	-1.5%	-0.23%	

Texas Lottery Commission
Instant Tickets by Price Point
Sales, Prize Expense, Sales Contribution and Payout Percentage With Year Over Year Changes
Unaudited

Notes - Instant Ticket Variances

		FY 2009		FY 2008		Difference
Sales	\$1 - \$7		\$1,348,307,557		\$1,281,665,524	\$66,642,033
Prize Exp.	\$1 - \$7		\$890,451,589		\$845,578,807	\$44,872,782
Sales Cont.	\$1 - \$7		\$457,855,968		\$436,086,717	\$21,769,251
Prize Exp. %	\$1 - \$7		66.0%		66.0%	0.1%
		FY 2009		FY 2008		Difference
Sales	\$10 - \$50		\$518,743,125		\$626,584,911	-\$107,841,786
Prize Exp.	\$10 - \$50		\$368,691,715		\$445,756,081	-\$77,064,366
Sales Cont.	\$10 - \$50		\$150,051,410		\$180,828,830	-\$30,777,420
Prize Exp. %	\$10 - \$50		71.1%		71.1%	-0.1%
		FY 2009		FY 2008		Difference
Sales	Instant		\$1,867,050,682		\$1,908,250,435	-\$41,199,753
Prize Exp.	Instant		\$1,259,143,304		\$1,291,334,888	-\$32,191,584
Sales Cont.	Instant		\$607,907,378		\$616,915,547	-\$9,008,169
Prize Exp. %	Instant		67.4%		67.7%	-0.2%

		FY 2009		FY 2008		Difference
Sales	\$1 - \$10		\$1,613,820,487		\$1,568,149,640	\$45,670,847
Prize Exp.	\$1 - \$10		\$1,076,226,229		\$1,046,000,991	\$30,225,238
Sales Cont.	\$1 - \$10		\$537,594,258		\$522,148,649	\$15,445,609
Prize Exp. %	\$1 - \$10		66.7%		66.7%	0.0%
		FY 2009		FY 2008		Difference
Sales	\$20 - \$50		\$253,230,195		\$340,100,795	-\$86,870,600
Prize Exp.	\$20 - \$50		\$182,917,074		\$245,333,897	-\$62,416,822
Sales Cont.	\$20 - \$50		\$70,313,121		\$94,766,898	-\$24,453,778
Prize Exp. %	\$20 - \$50		72.2%		72.1%	0.1%
		FY 2009		FY 2008		Difference
Sales	Instant		\$1,867,050,682		\$1,908,250,435	-\$41,199,753
Prize Exp.	Instant		\$1,259,143,304		\$1,291,334,888	-\$32,191,584
Sales Cont.	Instant		\$607,907,378		\$616,915,547	-\$9,008,169
Prize Exp. %	Instant		67.4%		67.7%	-0.2%

Texas Lottery Commission
Weekly Sales Summary
& Comparison to Previous Week
 Unaudited

	Week Ending 05/02/2009		Week Ending 04/25/2009			
	<u>THIS WEEK</u>	% of Sales	<u>LAST WEEK</u>	% of Sales	<u>\$ change</u>	<u>% change</u>
Total Sales	<u>\$75,847,663</u>		<u>\$71,667,866</u>		<u>\$4,179,797</u>	5.83%
Instant Tickets	<u>\$52,327,090</u>	69.0%	<u>\$51,450,968</u>	71.8%	<u>\$876,122</u>	1.70%
Lotto Texas	\$3,679,438	4.9%	\$3,517,624	4.9%	\$161,814	4.60%
Pick 3	\$5,512,771	7.3%	\$5,408,673	7.5%	\$104,098	1.92%
Pick 3 Sum It Up	\$113,756	0.1%	\$117,315	0.2%	-\$3,559	-3.03%
Cash 5	\$1,362,174	1.8%	\$1,347,754	1.9%	\$14,420	1.07%
Texas Two Step	\$880,888	1.2%	\$876,206	1.2%	\$4,682	0.53%
Mega Millions	\$9,277,686	12.2%	\$6,614,121	9.2%	\$2,663,565	40.27%
Megaplier	\$1,653,107	2.2%	\$1,298,021	1.8%	\$355,086	27.36%
Daily 4	\$937,874	1.2%	\$937,777	1.3%	\$97	0.01%
Daily 4 Sum It Up	<u>\$102,880</u>	0.1%	<u>\$99,409</u>	0.1%	<u>\$3,472</u>	3.49%
Total Online Sales	<u>\$23,520,573</u>		<u>\$20,216,898</u>		<u>\$3,303,675</u>	16.34%

* Totals may not sum due to rounding.

Texas Lottery Commission
Weekly Sales Summary
Unaudited

INSTANT TICKETS
TOP TEN SELLING GAMES

For the Week Ending : 05/02/2009

Rank	Price Point	Game	Sales (Millions)
1	\$ 5	SAPPHIRE BLUE 5'S	\$ 3.153
2	\$ 3	BONUS CASHWORD	\$ 2.755
3	\$ 5	KING OF CASH	\$ 2.732
4	\$ 7	\$75,000 CASINO	\$ 2.648
5	\$ 50	\$140,000,000 EXTREME PAYOUT	\$ 2.545
6	\$ 10	PRECIOUS JEWELS	\$ 2.534
7	\$ 5	EXTREME 8'S	\$ 2.084
8	\$ 10	STACKS OF CASH	\$ 1.830
9	\$ 20	SUPER SET FOR LIFE	\$ 1.596
10	\$ 10	SET FOR LIFE	\$ 1.581

Texas Lottery Commission
Prize Payout Tracking Report
Unaudited

Through Week Ending 05/02/2009

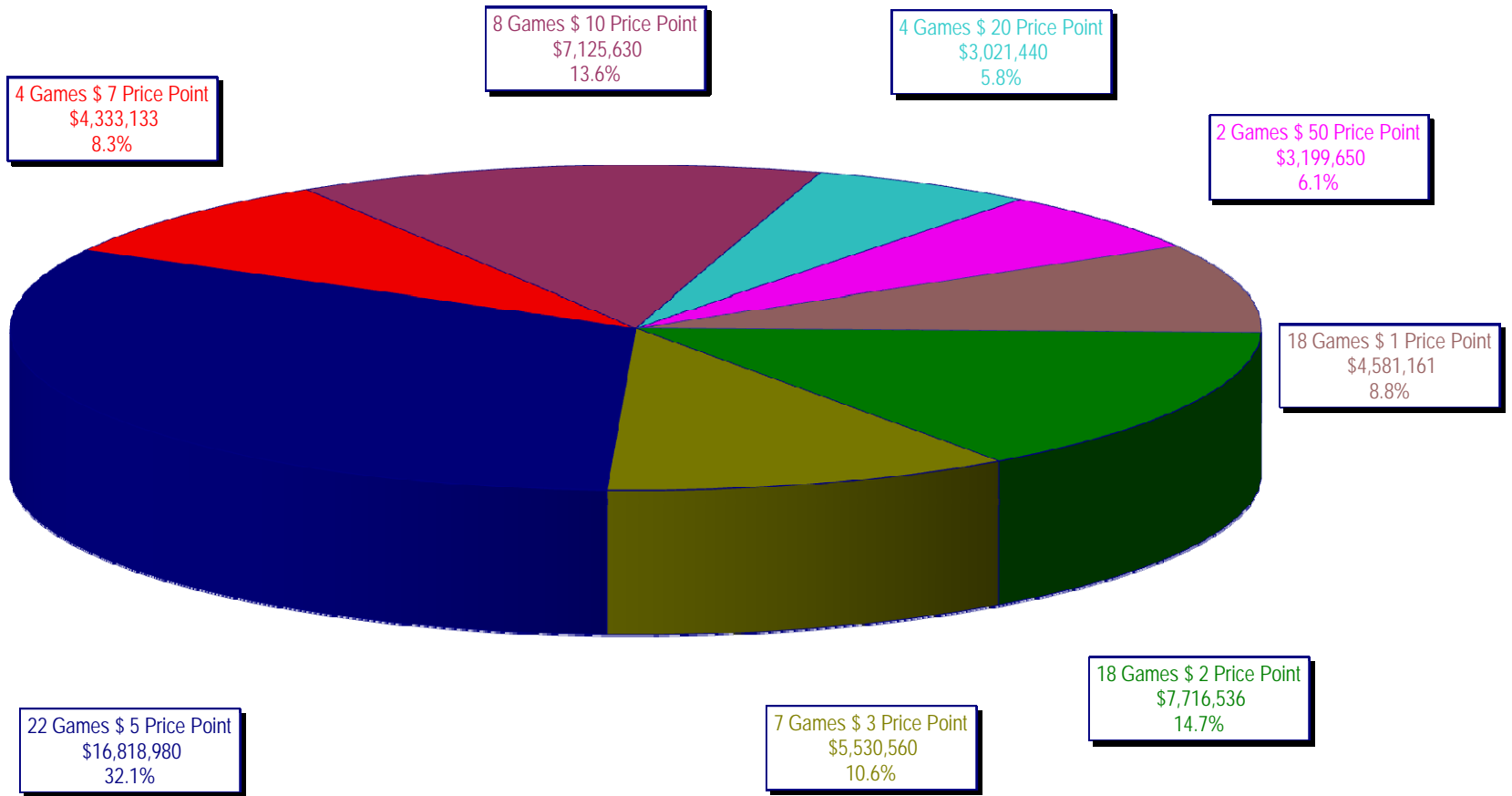
On-Line Sales

		FY Sales Through Week Ending 5/2/2009		FY Prize Expense Through Week Ending 5/2/2009	Actual* Prize Payout	Base Payout (Prize Pool)
Lotto	\$	128,551,743	\$	64,398,473	50.10%	50.00%
Pick 3		193,937,109		94,703,080	48.83%	50.00%
Pick 3 Sum It Up		4,080,534		1,860,304	45.59%	50.00%
Cash 5		48,198,703		24,203,424	50.22%	50.00%
Texas Two-Step		34,421,371		18,475,974	53.68%	50.00%
Mega Millions		134,385,573		65,493,303	48.74%	50.00%**
Megaplier		30,283,884		12,681,261	41.87%	N/A
Daily 4		30,457,737		14,818,200	48.65%	50.00%
Daily 4-Sum It Up		3,695,638		1,536,796	41.58%	50.00%
Totals	\$	608,012,291	\$	298,170,815	49.04%	

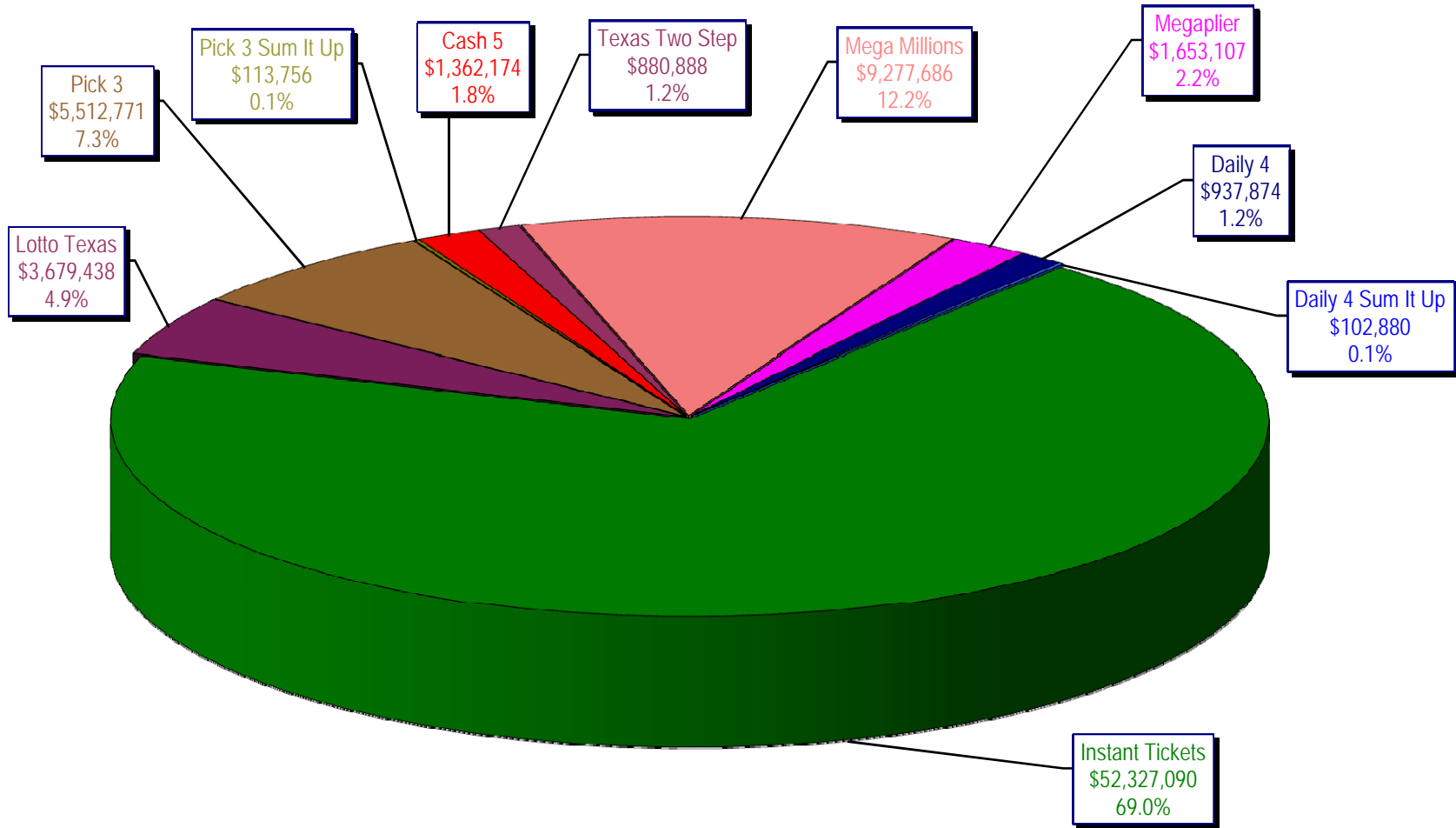
* Before Unclaimed Prizes

** Estimated; depends on # of guaranteed prizes won in Texas

Texas Lottery Commission
Instant Ticket Sales
For the Week Ending 05/02/2009
(Unaudited)



Texas Lottery Commission
All Game Sales
For the Week Ending 05/02/2009
(Unaudited)



Texas Lottery Commission - Weekly Sales Summary for FY 2009 (Unaudited)

Week Ended	Instant Games	New Games & Dates	Lotto Texas	Jackpot		Pick 3	Pick 3 Sum It Up	Cash 5	Texas Two Step	Jackpot		Mega Millions	Jackpot		Megaplier	Daily 4	Daily 4 Sum It Up	Total	Per Cap.
				W	S					M/T	TH/F		T	F					
9/6/2008	50,944,343.00	1108 (\$2,N), 1088 (\$3, N) - 9/01/08	3,378,718.00	5	6	5,436,414.00	122,123.00	1,396,622.00	890,346.00	350	450	2,445,490.00	12	16	649,090.00	786,482.50	109,834.00	66,159,462.50	2.77
9/13/2008	46,309,551.00	1109 (\$1,N), 1098 (\$5, N) - 9/08/08	3,020,089.00	7	8	4,705,585.50	105,899.00	1,279,412.00	856,199.00	600	200	2,327,214.00	24	12	617,672.00	696,633.00	96,156.50	60,014,411.00	2.51
9/20/2008	42,923,171.00	0	3,054,093.00	9	10	4,121,734.50	90,718.00	1,155,350.00	637,792.00	225	250	1,978,127.00	15	12	540,225.00	627,210.00	86,013.50	55,214,434.00	2.31
9/27/2008	47,042,801.00	1111 (\$2,N), 1099 (\$5, N) - 9/22/08	3,427,671.00	11	12	4,821,563.00	103,189.50	1,288,062.00	834,307.00	275	425	2,322,862.00	16	24	617,085.00	709,741.50	97,858.00	61,265,140.00	2.56
10/4/2008	50,747,162.00	1113 (\$1,N) 9/29/08	3,675,683.00	13	14	5,305,711.00	116,332.50	1,369,040.00	1,074,874.00	525	650	2,671,927.00	32	42	693,845.00	770,782.50	106,277.00	66,531,634.00	2.78
10/11/2008	49,763,789.00	0	3,732,365.00	15	16	5,287,094.00	114,665.50	1,370,334.00	1,305,250.00	800	975	2,306,070.00	12	16	622,120.00	778,204.00	106,395.00	65,386,286.50	2.74
10/18/2008	49,299,053.00	1117 (\$3,N), 1118 (\$20,N) - 10/13/08	3,780,438.00	17	18	5,149,258.00	109,530.00	1,355,601.00	741,849.00	200	200	2,500,644.00	23	32	652,198.00	776,366.00	102,056.00	64,466,993.00	2.70
10/25/2008	49,977,581.00	1119 (\$1,N), 1120 (\$5,N) - 10/20/08	3,210,762.00	4	5	5,099,671.00	107,104.50	1,339,079.00	789,649.00	225	275	2,456,965.00	42	12	641,206.00	778,434.00	102,972.50	64,503,424.00	2.70
11/1/2008	50,346,542.00	1121 (\$2,N), 1122 (\$10,N) - 10/27/08	3,325,641.00	6	7	5,234,124.00	109,983.00	1,339,046.00	946,035.00	375	475	2,347,596.00	16	23	626,235.00	805,572.00	104,612.50	65,185,386.50	2.73
11/8/2008	54,860,087.00	1123 (\$3,N), 1124 (\$7,N) - 11/03/08; 1103 (\$3,N) - 11/05/08; 1063 (\$3,N) - 11/07/08	3,290,417.00	4	5	5,686,701.00	118,495.00	1,397,985.00	1,158,101.00	625	750	2,729,302.50	31	42	692,662.00	871,230.00	112,175.50	70,917,156.00	2.97
11/15/2008	53,484,812.00	1125 (\$1, N), 1126 (\$5,N) - 11/10/08	3,336,934.00	6	7	5,459,984.00	112,884.00	1,366,024.00	766,955.00	200	225	3,102,251.00	51	62	749,736.00	830,957.00	104,094.00	69,314,631.00	2.90
11/22/2008	52,806,511.00	0	3,452,481.00	8	9	5,329,591.00	108,861.50	1,358,271.00	743,950.00	200	200	3,666,517.00	73	86	847,201.00	849,077.50	104,797.50	69,267,258.50	2.90
11/29/2008	52,199,741.00	1127 (\$2,N), 1128 (\$5,N) - 11/24/08	3,585,374.00	10	11	5,340,783.50	111,443.00	1,315,233.00	686,077.00	200	225	4,441,715.00	96	111	968,906.00	845,475.50	102,569.00	69,597,317.00	2.91
12/6/2008	56,731,851.00	0	3,794,991.00	12	13	5,752,593.00	121,663.50	1,416,446.00	780,328.00	250	200	6,238,355.00	128	146	1,270,214.00	881,841.50	107,357.00	77,095,640.00	3.23
12/13/2008	54,109,617.00	1129 (\$1, N) - 12/08/08	3,315,658.00	4	5	5,580,770.00	114,295.50	1,384,858.00	766,893.00	225	250	9,150,536.00	170	207	1,691,121.00	846,176.50	101,919.50	77,061,844.50	3.22
12/20/2008	55,777,328.00	1104 (\$2,N), 1105 (\$5,N), 1106 (\$10,N) - 12/15/08	3,432,340.00	6	7	5,741,120.00	116,075.50	1,401,805.00	741,945.00	200	200	2,736,234.00	12	16	687,875.00	871,579.50	104,543.00	71,610,845.00	3.00
12/27/2008	57,597,885.00	1077 (\$1,N), 1110 (\$1,N) - 12/22/08	3,582,169.00	8	4	5,628,081.50	115,323.00	1,340,590.00	708,906.00	225	250	2,842,167.00	22	29	706,042.00	828,346.00	100,146.00	73,449,655.50	3.07
1/3/2009	57,582,115.00	0	3,784,763.00	5	6	5,690,220.50	120,519.50	1,406,807.00	934,000.00	325	525	3,190,457.00	37	46	780,850.00	885,674.00	106,736.50	74,482,142.50	3.12
1/10/2009	54,250,945.00	1135 (\$2,N), 1136 (\$5,N) - 1/5/09	3,582,400.00	7	8	5,476,890.00	116,674.50	1,403,531.00	1,267,847.00	675	900	2,701,275.00	12	16	681,574.00	868,919.00	104,109.50	70,454,165.00	2.95
1/17/2009	51,625,339.00	1137 (\$1,N), 1138 (\$3,N) - 1/12/09	3,668,302.50	9	10	5,443,159.00	112,605.00	1,387,958.00	778,563.00	200	200	2,683,707.00	22	12	675,416.00	852,987.00	98,907.50	67,326,944.00	2.82
1/24/2009	52,789,573.00	1115 (\$2,N), 1116 (\$5,N) - 1/19/09	3,723,835.50	11	12	5,514,547.50	115,827.50	1,376,695.00	860,483.00	225	325	2,692,611.00	16	21	676,936.00	836,996.00	99,541.00	68,687,045.50	2.87
1/31/2009	55,453,471.00	1080 (\$1,N), 1024 (\$20,R) - 1/26/09; 1062 (\$5,N) - 1/28/09	3,837,299.00	13	14	5,700,714.50	121,794.50	1,403,756.00	1,070,879.00	450	600	3,002,883.00	30	40	731,253.00	925,937.50	113,755.50	72,361,743.00	3.03
2/7/2009	62,247,711.00	1035 (\$2,N), 1144 (\$5,N), 1058 (\$10, N) - 2/2/09	4,092,117.00	15	16	6,336,717.00	134,543.00	1,481,812.00	842,746.00	200	225	3,509,032.00	50	60	829,550.00	1,007,529.00	120,267.50	80,602,024.50	3.37
2/14/2009	60,509,056.00	1146 (\$7,N), 1089 (\$1,N) - 2/9/09	4,119,193.00	17	18	6,363,028.00	133,901.50	1,445,616.00	1,013,987.00	325	450	4,082,572.00	73	85	928,813.00	1,010,898.50	120,068.50	79,727,133.50	3.34
2/21/2009	59,194,623.00	1046 (\$2,N), 1140 (\$5,N) - 2/16/09	4,326,401.00	19	20	6,038,807.50	128,493.00	1,439,312.00	1,268,803.00	600	750	5,614,471.00	103	120	1,178,133.00	988,075.00	115,703.50	80,292,822.00	3.36
2/28/2009	58,857,216.00	1132 (\$10,N), 1149 (\$1,N) - 2/23/09	4,526,304.00	21	22	6,084,457.50	128,979.50	1,439,607.00	1,668,414.00	925	1,150	7,676,975.00	145	171	1,504,895.00	973,121.00	114,171.00	82,974,140.00	3.47

Texas Lottery Commission - Weekly Sales Summary for FY 2009 (Unaudited)

Week Ended	Instant Games	New Games & Dates	Lotto Texas	Jackpot		Pick 3	Pick 3 Sum It Up	Cash 5	Texas Two Step	Jackpot		Mega Millions	Jackpot		Megaplier	Daily 4	Daily 4 Sum It Up	Total	Per Cap.
				W	S					M/T	TH/F		T	F					
3/7/2009	59,552,257.00	0	4,928,440.00	23	25	6,133,789.00	128,599.00	1,487,185.00	1,984,358.00	1,350	1,600	6,898,457.00	212	12	1,349,427.00	971,644.50	113,236.00	83,547,392.50	3.50
3/14/2009	53,754,084.00	1139 (\$2.N), 1079 (\$5.N) - 3/09/09	4,752,592.00	26	28	5,850,166.00	120,684.50	1,418,127.00	2,112,571.00	1,900	2,150	2,782,204.00	16	26	698,214.00	925,615.00	109,657.50	72,523,915.00	3.03
3/21/2009	52,581,107.00	1107 (\$1.N), 1154 (\$3.N), 1057 (\$10.N) - 3/16/09; 1102 (\$2.N) - 3/19/09	3,437,818.00	4	5	5,776,041.50	117,294.00	1,399,720.00	880,620.00	200	225	2,595,785.00	12	16	653,517.00	934,185.00	108,057.50	68,484,145.00	2.87
3/28/2009	52,560,961.00	1130 (\$5.N), 1150 (\$10.N) - 3/23/09	3,486,731.00	6	7	5,633,454.50	114,269.50	1,381,550.00	901,673.00	300	200	2,845,499.00	24	34	701,971.00	925,093.50	104,691.50	68,655,894.00	2.87
4/4/2009	56,249,759.00	1151 (\$2.N), 1101 (\$50.N) - 3/30/09	3,746,083.00	8	9	5,893,043.50	122,332.00	1,429,598.00	940,614.00	225	300	3,321,274.00	43	54	794,282.00	998,042.00	111,733.50	73,606,761.00	3.08
4/11/2009	54,440,987.00	1153 (\$2.N) - 4/07/09; 1152 (\$3.N) - 4/08/09	3,594,176.00	10	4	5,893,551.00	120,491.50	1,394,879.00	933,807.00	425	200	3,772,700.00	65	78	857,890.00	987,127.50	105,977.50	72,101,586.50	3.02
4/18/2009	52,755,834.00	1145 (\$1.N), 1148 (\$5.N) - 4/13/09	3,462,217.00	5	6	5,627,572.00	117,123.50	1,374,682.00	829,493.00	225	200	4,960,982.00	92	109	1,040,136.00	957,161.00	100,218.50	71,225,419.00	2.98
4/25/2009	51,450,968.00	1051 (\$7.N) - 4/20/09	3,517,624.00	7	8	5,408,672.50	117,314.50	1,347,754.00	876,206.00	225	300	6,614,120.95	130	155	1,298,021.00	937,777.00	99,408.50	71,667,866.45	3.00
5/2/2009	52,327,090.00	1161 (\$1.N), 1081 (\$5.N) - 4/27/09	3,679,438.00	9	10	5,512,770.50	113,755.50	1,362,174.00	880,888.00	425	200	9,277,686.00	181	225	1,653,107.00	937,874.00	102,880.00	75,847,663.00	3.17
weekly change	1.70%		4.60%			1.92%	-3.03%	1.07%	0.53%			40.27%			27.36%	0.01%	3.49%	5.83%	
SALES																			
Startup to date	35,347,636,684.00		10,407,648,790.00			3,492,656,061.50	10,566,364.00	2,167,354,713.00	460,687,089.00			1,060,524,168.45			248,491,918.00	72,674,708.00	12,034,441.00	53,488,408,908.95	100.0%
Calendar Year to date	965,733,009.00		68,279,498.00			101,496,562.50	175,670.50	24,616,259.00	19,527,952.00			76,567,264.95			16,624,103.00	16,467,049.50	1,893,633.50	1,291,381,001.95	100.0%
Fiscal Year to date 2009	1,867,050,682.00		128,551,743.00			193,937,109.00	4,080,534.00	48,198,703.00	34,421,371.00			134,385,573.45			30,283,884.00	30,457,736.50	3,695,637.50	2,475,062,973.45	100.0%