



*WEEKLY SALES SUMMARY*

Unaudited

**Week Ending: 05/04/2013**

Texas Lottery Commission  
Fiscal Year to Date Sales Comparison  
Unaudited

Through the week ending 05/04/2013 (36 weeks)

Sales by Game	FY 2011 *	FY 2012 **	FY 2013	\$ Change		% Change	
				FY 2013 to FY 2011	FY 2013 to FY 2012	FY 2013 to FY 2011	FY 2013 to FY 2012
Instants	\$ 1,978,241,570	\$ 2,110,125,181	\$ 2,200,858,973	\$ 222,617,403	\$ 90,733,792	11.3%	4.3%
Lotto Texas	118,836,604	119,684,093	101,317,787	-17,518,817	-18,366,306	-14.7%	-15.3%
Lotto Extra	-	-	1,121,205	1,121,205	1,121,205	-	-
Pick 3	189,273,847	185,915,637	182,801,521	-6,472,326	-3,114,116	-3.4%	-1.7%
Pick 3 Sum It Up	3,844,475	3,862,023	3,437,842	-406,633	-424,181	-10.6%	-11.0%
Cash Five	44,573,164	45,051,780	38,165,058	-6,408,106	-6,886,722	-14.4%	-15.3%
Texas Two Step	32,452,005	45,331,493	40,398,414	7,946,409	-4,933,079	24.5%	-10.9%
Mega Millions	135,125,245	172,368,888	72,824,753	-62,300,492	-99,544,135	-46.1%	-57.8%
Megaplier	27,613,204	31,985,675	16,903,828	-10,709,376	-15,081,847	-38.8%	-47.2%
Daily 4	39,866,297	44,677,234	49,726,807	9,860,510	5,049,573	24.7%	11.3%
Daily 4 Sum It Up	3,063,160	3,262,835	3,235,043	171,883	-27,792	5.6%	-0.9%
Powerball	62,701,801	106,913,282	179,005,789	116,303,988	72,092,508	185.5%	67.4%
Power Play	14,789,661	18,401,432	19,070,867	4,281,206	669,436	28.9%	3.6%
All or Nothing	-	-	57,394,061	57,394,061	57,394,061	-	-
<b>Total</b>	<b>\$ 2,650,381,031</b>	<b>\$ 2,887,579,551</b>	<b>\$ 2,966,261,947</b>	<b>\$ 315,880,916</b>	<b>\$ 78,682,396</b>	<b>11.9%</b>	<b>2.7%</b>

\* 3 extra days

\*\* 2 extra days

Texas Lottery Commission  
Fiscal Year to Date Cumulative Average Sales Comparison  
Unaudited

Through the week ending 05/04/2013 (36 weeks)

Sales by Game	FY 2011	FY 2012	FY 2013
Instants	\$ 7,944,745	\$ 8,508,569	\$ 8,946,581
Lotto Texas	477,255	482,597	411,861
Lotto Extra	-	-	53,391 **
Pick 3	760,136	749,660	743,096
Pick 3 Sum It Up	15,440	15,573	13,975
Cash Five	179,009	181,660	155,143
Texas Two Step	130,329	182,788	164,221
Mega Millions	542,672	695,036	296,036
Megaplier	110,896	128,974	68,715
Daily 4	160,106	180,150	202,141
Daily 4 Sum It Up	12,302	13,157	13,151
Powerball	251,814	431,102	727,666
Power Play	59,396	74,199	77,524
All or Nothing	-	-	241,152 *
<b>Total</b>	<b>\$ <u>10,644,101</u></b>	<b>\$ <u>11,643,466</u></b>	<b>\$ <u>12,114,651</u></b>

thru 05/07/2011  
249 days

thru 05/05/2012  
248 days

thru 05/04/2013  
246 days  
\* 238 days  
\*\* 21 days

Texas Lottery Commission  
Fiscal Year Over Year Change in Sales  
Unaudited  
FY 2013 Compared to FY 2012

Week	FY 2013 Week Ending	INSTANT TICKETS				DRAW GAMES				TOTAL SALES			
		FY 2013	FY 2012	Difference	% change - Cumulative Sales	FY 2013	FY 2012	Difference	% change - Cumulative Sales	FY 2013	FY 2012	Difference	% change - Cumulative Sales
1	9/1/2012**	\$9,611,328	\$25,147,181	(\$15,535,853)	-61.8%	\$3,712,535	\$9,704,561	(\$5,992,026)	-61.7%	\$13,323,863	\$34,851,742	(\$21,527,879)	-61.8%
2	9/8/2012	\$56,941,761	\$50,591,068	\$6,350,693	12.6%	\$19,305,417	\$17,681,853	\$1,623,564	9.2%	\$76,247,178	\$68,272,921	\$7,974,257	11.7%
3	9/15/2012	\$56,302,875	\$49,835,063	\$6,467,812	13.0%	\$20,857,230	\$16,842,326	\$4,014,904	23.8%	\$77,160,105	\$66,677,389	\$10,482,716	15.7%
4	9/22/2012	\$54,974,438	\$49,777,138	\$5,197,300	10.4%	\$20,570,277	\$17,504,800	\$3,065,477	17.5%	\$75,544,715	\$67,281,938	\$8,262,777	12.3%
5	9/29/2012	\$54,606,674	\$51,040,274	\$3,566,400	7.0%	\$20,462,690	\$18,653,100	\$1,809,591	9.7%	\$75,069,364	\$69,693,374	\$5,375,991	7.7%
6	10/6/2012	\$59,223,327	\$53,715,157	\$5,508,170	10.3%	\$19,279,973	\$17,225,680	\$2,054,293	11.9%	\$78,503,300	\$70,940,837	\$7,562,463	10.7%
7	10/13/2012	\$57,075,606	\$51,942,121	\$5,133,485	9.9%	\$18,638,467	\$17,854,980	\$783,487	4.4%	\$75,714,073	\$69,797,101	\$5,916,972	8.5%
8	10/20/2012	\$56,630,134	\$52,837,769	\$3,792,365	7.2%	\$18,998,943	\$19,558,519	(\$559,577)	-2.9%	\$75,629,077	\$72,396,288	\$3,232,789	4.5%
9	10/27/2012	\$55,789,743	\$52,206,644	\$3,583,099	6.9%	\$20,130,190	\$21,504,565	(\$1,374,376)	-6.4%	\$75,919,933	\$73,711,209	\$2,208,724	3.0%
10	11/3/2012	\$58,142,777	\$56,265,310	\$1,877,467	3.3%	\$20,638,008	\$20,870,086	(\$232,079)	-1.1%	\$78,780,785	\$77,135,396	\$1,645,389	2.1%
11	11/10/2012	\$57,484,804	\$55,682,645	\$1,802,159	3.2%	\$20,862,872	\$20,876,404	\$3,000,468	16.8%	\$78,347,676	\$73,545,049	\$4,802,627	6.5%
12	11/17/2012	\$55,805,228	\$54,978,079	\$827,149	1.5%	\$21,660,705	\$17,879,985	\$3,780,721	21.1%	\$77,465,933	\$72,858,064	\$4,607,870	6.3%
13	11/24/2012	\$61,331,977	\$53,942,448	\$7,389,529	13.7%	\$27,172,853	\$16,877,145	\$10,295,708	61.0%	\$88,504,830	\$70,819,593	\$17,685,237	25.0%
14	12/1/2012	\$58,420,598	\$57,153,469	\$1,267,129	2.2%	\$62,797,943	\$18,298,636	\$44,499,307	243.2%	\$121,218,541	\$75,452,105	\$45,766,436	60.7%
15	12/8/2012	\$62,489,745	\$55,318,284	\$7,171,461	13.0%	\$19,630,155	\$19,033,326	\$596,829	3.1%	\$82,119,900	\$74,351,610	\$7,768,290	10.4%
16	12/15/2012	\$59,661,880	\$58,612,629	\$1,049,251	1.8%	\$20,064,982	\$20,045,279	\$19,704	0.1%	\$79,726,862	\$78,657,908	\$1,068,955	1.4%
17	12/22/2012	\$63,556,886	\$60,628,256	\$2,928,630	4.8%	\$19,084,653	\$22,572,986	(\$3,488,333)	-15.5%	\$82,641,539	\$83,201,242	(\$559,703)	-0.7%
18	12/29/2012	\$63,547,886	\$63,065,007	\$482,879	0.8%	\$17,359,874	\$19,948,521	(\$2,588,647)	-13.0%	\$80,907,760	\$83,013,528	(\$2,105,768)	-2.5%
19	1/5/2013	\$60,452,721	\$60,479,896	(\$27,175)	0.0%	\$18,833,047	\$17,331,888	\$1,501,159	8.7%	\$79,285,768	\$77,811,784	\$1,473,984	1.9%
20	1/12/2013	\$58,862,997	\$57,689,526	\$1,173,471	2.0%	\$18,879,167	\$17,568,732	\$1,310,435	7.5%	\$77,742,164	\$75,258,258	\$2,483,906	3.3%
21	1/19/2013	\$58,494,057	\$58,704,854	(\$210,797)	-0.4%	\$19,258,004	\$19,886,540	(\$628,537)	-3.2%	\$77,752,061	\$78,591,394	(\$839,334)	-1.1%
22	1/26/2013	\$57,871,744	\$57,611,325	\$260,419	0.5%	\$20,093,215	\$20,641,697	(\$548,483)	-2.7%	\$77,964,959	\$78,253,022	(\$288,064)	-0.4%
23	2/2/2013	\$61,846,715	\$65,553,366	(\$3,706,651)	-5.7%	\$21,032,335	\$23,689,855	(\$2,657,521)	-11.2%	\$82,879,050	\$89,243,221	(\$6,364,172)	-7.1%
24	2/9/2013	\$70,374,906	\$75,070,485	(\$4,695,579)	-6.3%	\$21,183,638	\$28,361,583	(\$7,177,945)	-25.3%	\$91,558,544	\$103,432,068	(\$11,873,524)	-11.5%
25	2/16/2013	\$71,002,438	\$66,679,947	\$4,322,491	6.5%	\$19,295,197	\$19,588,615	(\$293,418)	-1.5%	\$90,297,635	\$86,268,562	\$4,029,073	4.7%
26	2/23/2013	\$71,203,934	\$64,868,899	\$6,335,035	9.8%	\$19,729,989	\$19,965,388	(\$235,399)	-1.2%	\$90,933,923	\$84,834,287	\$6,099,636	7.2%
27	3/2/2013	\$74,551,567	\$67,135,065	\$7,416,502	11.0%	\$20,278,327	\$20,947,181	(\$668,854)	-3.2%	\$94,829,894	\$88,082,246	\$6,747,648	7.7%
28	3/9/2013	\$75,360,138	\$68,299,006	\$7,061,132	10.3%	\$21,447,763	\$22,152,639	(\$704,876)	-3.2%	\$96,807,901	\$90,451,645	\$6,356,256	7.0%
29	3/16/2013	\$70,065,528	\$65,013,692	\$5,051,836	7.8%	\$22,055,563	\$23,351,718	(\$1,296,155)	-5.6%	\$92,121,091	\$88,365,410	\$3,755,682	4.3%
30	3/23/2013	\$70,137,284	\$64,035,255	\$6,102,029	9.5%	\$28,709,024	\$27,416,609	\$1,292,415	4.7%	\$98,846,308	\$91,451,864	\$7,394,444	8.1%
31	3/30/2013	\$68,758,522	\$65,135,991	\$3,622,531	5.6%	\$18,597,091	\$84,628,987	(\$66,031,896)	-78.0%	\$87,355,613	\$149,764,978	(\$62,409,365)	-41.7%
32	4/6/2013	\$73,270,054	\$66,860,957	\$6,409,097	9.6%	\$20,048,992	\$19,899,400	\$149,592	0.8%	\$93,319,046	\$86,760,357	\$6,558,689	7.6%
33	4/13/2013	\$64,738,900	\$64,028,898	\$710,002	1.1%	\$19,697,793	\$20,220,141	(\$522,349)	-2.6%	\$84,436,693	\$84,249,039	\$187,654	0.2%
34	4/20/2013	\$63,252,072	\$63,623,892	(\$371,820)	-0.6%	\$20,245,083	\$20,974,282	(\$729,199)	-3.5%	\$83,497,155	\$84,598,174	(\$1,101,019)	-1.3%
35	4/27/2013	\$62,766,647	\$61,743,623	\$1,023,024	1.7%	\$21,162,888	\$20,267,388	\$895,500	4.4%	\$83,929,535	\$82,011,011	\$1,918,524	2.3%
36	5/4/2013	\$66,251,082	\$64,851,962	\$1,399,120	2.2%	\$23,628,101	\$20,642,982	\$2,985,119	14.5%	\$89,879,183	\$85,494,944	\$4,384,239	5.1%
37	5/11/2013		\$65,472,556				\$19,140,768				\$84,613,324		
38	5/18/2013		\$60,572,658				\$18,342,814				\$78,915,472		
39	5/25/2013		\$58,959,028				\$18,618,060				\$77,577,088		
40	6/1/2013		\$57,409,086				\$19,014,645				\$76,423,731		
41	6/8/2013		\$59,845,545				\$20,527,958				\$80,373,503		
42	6/15/2013		\$57,021,498				\$19,386,186				\$76,407,684		

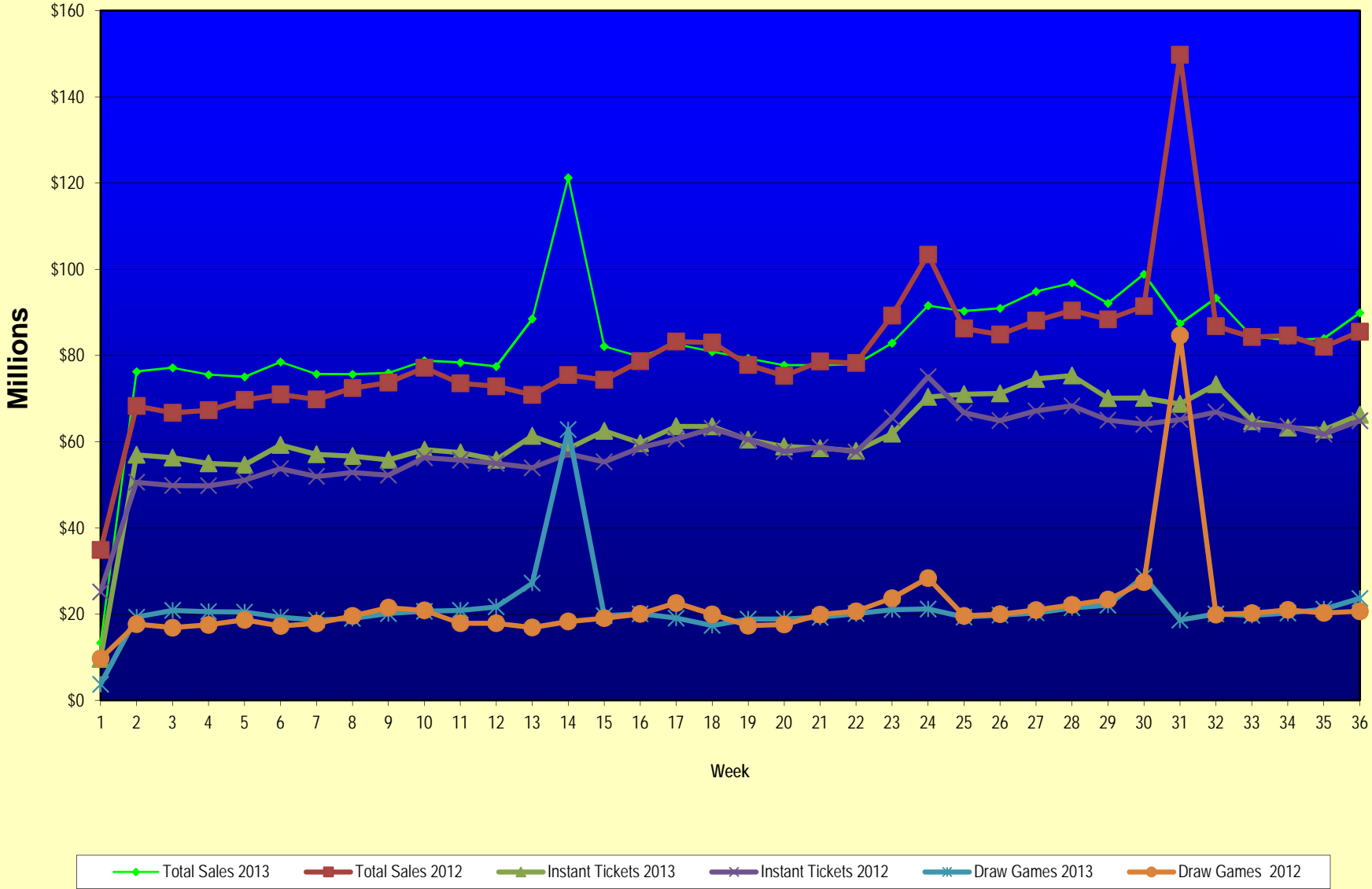
Note: Week 1 is not a full week of sales as this report is prepared on a Fiscal Year basis.

Texas Lottery Commission  
Fiscal Year Over Year Change in Sales  
Unaudited  
FY 2013 Compared to FY 2012

Week	FY 2013 Week Ending	INSTANT TICKETS				DRAW GAMES				TOTAL SALES			
		FY 2013	FY 2012	Difference	% change - Cumulative Sales	FY 2013	FY 2012	Difference	% change - Cumulative Sales	FY 2013	FY 2012	Difference	% change - Cumulative Sales
43	6/22/2013		\$57,892,076				\$17,594,154				\$75,486,230		
44	6/29/2013		\$57,497,435				\$18,153,658				\$75,651,093		
45	7/6/2013		\$60,345,000				\$19,059,152				\$79,404,152		
46	7/13/2013		\$57,683,321				\$18,751,043				\$76,434,364		
47	7/20/2013		\$57,083,343				\$18,769,201				\$75,852,544		
48	7/27/2013		\$54,006,781				\$18,934,103				\$72,940,884		
49	8/3/2013		\$56,557,409				\$20,206,705				\$76,764,114		
50	8/10/2013		\$57,799,452				\$22,832,120				\$80,631,572		
51	8/17/2013		\$54,845,724				\$25,435,624				\$80,281,348		
52	8/24/2013		\$55,661,277				\$17,524,474				\$73,185,751		
	8/31/2013		\$47,363,984				\$14,929,528				\$62,293,512		
Total thru Current Week		\$2,200,858,973	\$2,110,125,181	\$90,733,792	4.3%	\$765,402,974	\$777,454,370	(\$12,051,396)	-1.6%	\$2,966,261,947	\$2,887,579,551	\$78,682,396	2.7%
Fiscal Year Total		\$2,200,858,973	\$3,086,141,354			\$765,402,974	\$1,104,674,559			\$2,966,261,947	\$4,190,815,913		

\*\* FY 2012 includes 3 days; FY 2013 includes 1 day.

### Texas Lottery Commission Fiscal Year Over Year Change in Sales



Note: Week 1 is not a full week of sales as this report is prepared on a Fiscal Year basis.

Texas Lottery Commission  
Instant Tickets by Price Point  
Sales, Prize Expense, Sales Contribution and Payout Percentage With Year Over Year Changes  
Unaudited

Fiscal Year	Price Point	# of Active Games	FY Sales	% of Instant Ticket Sales	Year over Year Change in Sales	FY Prize Expense	Year over Year Change in Prize Expense	FY Sales Contribution	Year over Year Change in Contribution	Average Prize Payout %	Year over Year Change in Payout %
2012	\$1.00	34	153,043,145	7.3%		93,129,084		59,914,061		60.9%	0.2%
thru	\$2.00	35	285,485,702	13.5%		185,672,485		99,813,217		65.0%	-0.8%
5/5/2012	\$3.00	19	251,073,309	11.9%		164,565,401		86,507,908		65.5%	-0.1%
	\$5.00	45	690,679,500	32.7%		470,038,519		220,640,981		68.1%	0.2%
	\$7.00	4	18,186,035	0.9%		12,366,387		5,819,648		68.0%	0.0%
	\$10.00	17	347,737,010	16.5%		245,790,859		101,946,151		70.7%	-0.5%
	\$20.00	6	273,722,980	13.0%		204,477,423		69,245,557		74.7%	0.1%
	\$50.00	2	90,197,500	4.3%		70,041,897		20,155,603		77.7%	0.0%
<b>Total</b>		<b>162</b>	<b>\$2,110,125,181</b>			<b>\$1,446,082,055</b>		<b>\$664,043,126</b>		<b>68.5%</b>	<b>0.1%</b>
2013	\$1.00	31	132,914,688	6.0%		81,131,514		51,783,174		61.0%	0.7%
thru	\$2.00	36	280,128,652	12.7%		182,083,389		98,045,263		65.0%	-0.1%
5/4/2013	\$3.00	21	262,242,945	11.9%		171,837,592		90,405,353		65.5%	0.0%
	\$5.00	54	695,801,670	31.6%		473,428,444		222,373,226		68.0%	0.0%
	\$7.00	2	16,199,988	0.7%		11,010,585		5,189,403		68.0%	0.0%
	\$10.00	12	404,740,870	18.4%		287,653,561		117,087,309		71.1%	0.3%
	\$20.00	9	306,115,660	13.9%		229,180,287		76,935,373		74.9%	0.1%
	\$50.00	3	102,714,500	4.7%		79,744,830		22,969,670		77.6%	0.0%
<b>Total</b>		<b>168</b>	<b>\$2,200,858,973</b>			<b>\$1,516,070,202</b>		<b>\$684,788,771</b>		<b>68.9%</b>	<b>0.4%</b>
<b>Variance</b>	\$1.00	-3	-20,128,457		-13.2%	-11,997,571	-12.9%	-8,130,886	-13.6%	0.19%	
2013 to	\$2.00	1	-5,357,050		-1.9%	-3,589,096	-1.9%	-1,767,954	-1.8%	-0.04%	
2012	\$3.00	2	11,169,636		4.4%	7,272,191	4.4%	3,897,445	4.5%	-0.02%	
	\$5.00	9	5,122,170		0.7%	3,389,925	0.7%	1,732,245	0.8%	-0.01%	
	\$7.00	-2	-1,986,047		-10.9%	-1,355,801	-11.0%	-630,246	-10.8%	-0.03%	
	\$10.00	-5	57,003,860		16.4%	41,862,703	17.0%	15,141,157	14.9%	0.39%	
	\$20.00	3	32,392,680		11.8%	24,702,865	12.1%	7,689,815	11.1%	0.16%	
	\$50.00	1	12,517,000		13.9%	9,702,933	13.9%	2,814,067	14.0%	-0.02%	
<b>Total</b>		<b>6</b>	<b>\$90,733,792</b>		<b>4.3%</b>	<b>\$69,988,148</b>	<b>4.8%</b>	<b>\$20,745,644</b>	<b>3.1%</b>	<b>0.32%</b>	

Notes - Instant Ticket Variances

Texas Lottery Commission  
**Instant Tickets by Price Point**  
**Sales, Prize Expense, Sales Contribution and Payout Percentage With Year Over Year Changes**  
 Unaudited

			FY 2013		FY 2012	Difference
Sales	\$1 - \$7	1	\$1,387,287,943		\$1,398,467,691	-\$11,179,748
Prize Exp.	\$1 - \$7	1	\$919,491,524		\$925,771,877	-\$6,280,353
Sales Cont.	\$1 - \$7	1	\$467,796,419		\$472,695,814	-\$4,899,395
Prize Exp. %	\$1 - \$7	1	66.3%		66.2%	0.1%
			FY 2013		FY 2012	Difference
Sales	\$10 - \$50	2	\$813,571,030		\$711,657,490	\$101,913,540
Prize Exp.	\$10 - \$50	2	\$596,578,678		\$520,310,178	\$76,268,501
Sales Cont.	\$10 - \$50	1	\$216,992,352		\$191,347,312	\$25,645,039
Prize Exp. %	\$10 - \$50	2	73.3%		73.1%	0.2%
			FY 2013		FY 2012	Difference
Sales	Instant		\$2,200,858,973		\$2,110,125,181	\$90,733,792
Prize Exp.	Instant		\$1,516,070,202		\$1,446,082,055	\$69,988,148
Sales Cont.	Instant		\$684,788,771		\$664,043,126	\$20,745,644
Prize Exp. %	Instant		68.9%		68.5%	0.4%

			FY 2013		FY 2012	Difference
Sales	\$1 - \$10		\$1,792,028,813		\$1,746,204,701	\$45,824,112
Prize Exp.	\$1 - \$10		\$1,207,145,085		\$1,171,562,735	\$35,582,350
Sales Cont.	\$1 - \$10		\$584,883,728		\$574,641,966	\$10,241,762
Prize Exp. %	\$1 - \$10		67.4%		67.1%	0.3%
			FY 2013		FY 2012	Difference
Sales	\$20 - \$50		\$408,830,160		\$363,920,480	\$44,909,680
Prize Exp.	\$20 - \$50		\$308,925,117		\$274,519,319	\$34,405,798
Sales Cont.	\$20 - \$50		\$99,905,043		\$89,401,161	\$10,503,882
Prize Exp. %	\$20 - \$50		75.6%		75.4%	0.1%
			FY 2013		FY 2012	Difference
Sales	Instant		\$2,200,858,973		\$2,110,125,181	\$90,733,792
Prize Exp.	Instant		\$1,516,070,202		\$1,446,082,055	\$69,988,148
Sales Cont.	Instant		\$684,788,771		\$664,043,126	\$20,745,644
Prize Exp. %	Instant		68.9%		68.5%	0.4%



Texas Lottery Commission  
**Weekly Sales Summary**  
**& Comparison to Previous Week**  
 Unaudited

	Week Ending 05/04/2013	% of Sales	Week Ending 04/27/2013	% of Sales	\$ change	% change
	<u>THIS WEEK</u>		<u>LAST WEEK</u>			
Total Sales	<u>\$89,879,183</u>		<u>\$83,929,535</u>		<u>\$5,949,648</u>	7.09%
Instant Tickets	<u>\$66,251,082</u>	73.7%	<u>\$62,766,647</u>	74.8%	<u>\$3,484,435</u>	5.55%
Lotto	\$2,580,370	2.9%	\$2,475,171	2.9%	\$105,199	4.25%
Lotto Extra	\$370,834	0.4%	\$348,710	0.4%	\$22,124	0.00%
Pick 3	\$5,346,225	5.9%	\$5,041,109	6.0%	\$305,116	6.05%
Pick 3 Sum It Up	\$100,906	0.1%	\$96,530	0.1%	\$4,377	4.53%
Cash Five	\$1,069,045	1.2%	\$1,032,823	1.2%	\$36,222	3.51%
Texas Two Step	\$1,558,065	1.7%	\$1,159,837	1.4%	\$398,228	34.33%
Mega Millions	\$3,324,473	3.7%	\$2,891,419	3.4%	\$433,054	14.98%
Megaplier	\$685,861	0.8%	\$606,592	0.7%	\$79,269	13.07%
Daily 4	\$1,506,050	1.7%	\$1,436,459	1.7%	\$69,592	4.84%
Daily 4 Sum It Up	\$97,318	0.1%	\$88,843	0.1%	\$8,476	9.54%
Powerball	\$5,035,509	5.6%	\$4,093,281	4.9%	\$942,228	23.02%
Power Play	\$577,937	0.6%	\$493,873	0.6%	\$84,064	17.02%
All or Nothing	\$1,375,508	1.5%	\$1,398,242	1.7%	-\$22,734	-1.63%
Total Draw Game Sales	<u>\$23,628,101</u>		<u>\$21,162,888</u>		<u>\$2,465,213</u>	11.65%

\* Totals may not sum due to rounding.

Texas Lottery Commission  
Weekly Sales Summary  
Unaudited

INSTANT TICKETS  
TOP TEN SELLING GAMES

For the Week Ending: 05/04/13

Rank	Price Point	Game	Sales (Millions)
1	\$ 10	10X MEGA MONEY	\$ 5.002
2	\$ 20	20X CASH	\$ 3.981
3	\$ 5	PLATINUM 10X	\$ 3.498
4	\$ 3	LOTERIA TEXAS	\$ 2.482
5	\$ 5	\$75,000 CASHWORD-O-RAMA	\$ 2.431
6	\$ 5	MUCHO CASH FIESTA	\$ 2.377
7	\$ 20	\$500 MILLION EXTREME CASH BLAST	\$ 2.276
8	\$ 10	\$200 MILLION CASH SPECTACULAR	\$ 2.208
9	\$ 5	MONEY MANIA	\$ 2.182
10	\$ 5	SIZZLIN' 7'S	\$ 2.048

Texas Lottery Commission  
Prize Payout Tracking Report  
Unaudited

Through Week Ending 05/04/13

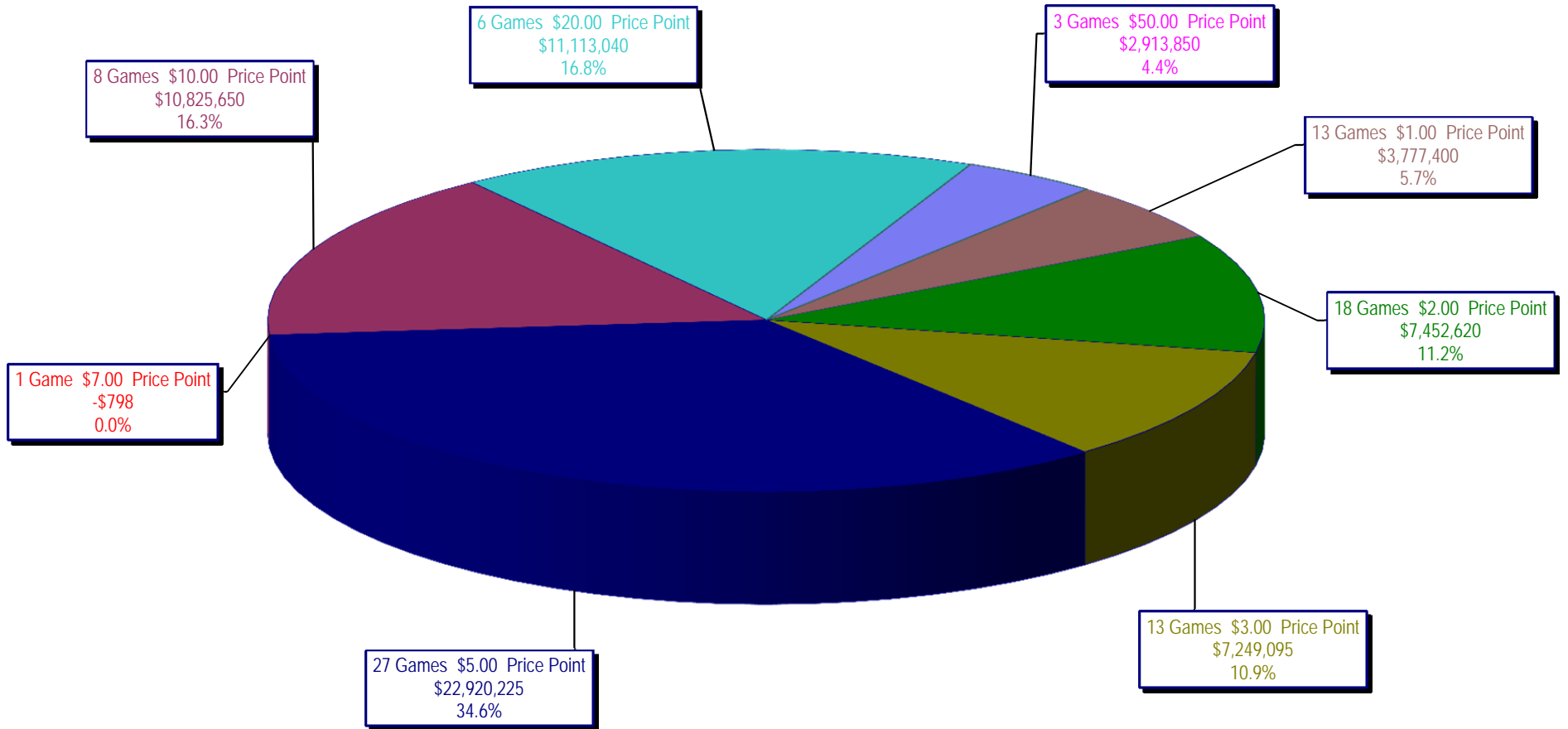
Draw Game Sales

		FY Sales Through Week Ending 5/4/2013		FY Prize Expense Through Week Ending 5/4/2013	Actual* Prize Payout	Base Payout (Prize Pool)
Lotto	\$	101,317,787	\$	79,560,890	78.53%	50.00%
Lotto Extra		1,121,205		579,804	51.71%	50.00%
Pick 3		182,801,521		91,248,100	49.92%	50.00%
Pick 3 Sum It Up		3,437,842		1,720,024	50.03%	50.00%
Cash Five		38,165,058		19,084,244	50.00%	50.00%
Texas Two Step		40,398,414		20,358,760	50.39%	50.00%
Mega Millions		72,824,753		35,733,343	49.07%	50.00%**
Megaplier		16,903,828		7,603,124	44.98%	N/A
Daily 4		49,726,807		24,504,275	49.28%	50.00%
Daily 4 Sum It Up		3,235,043		1,349,522	41.72%	50.00%
Powerball		179,005,789		92,263,109	51.54%	50.00%**
Power Play		19,070,867		10,612,625	55.65%	N/A
All or Nothing		57,394,061		33,223,112	57.89%	50.00%
<b>Totals</b>	\$	<b>765,402,974</b>	\$	<b>417,840,932</b>	<b>54.59%</b>	

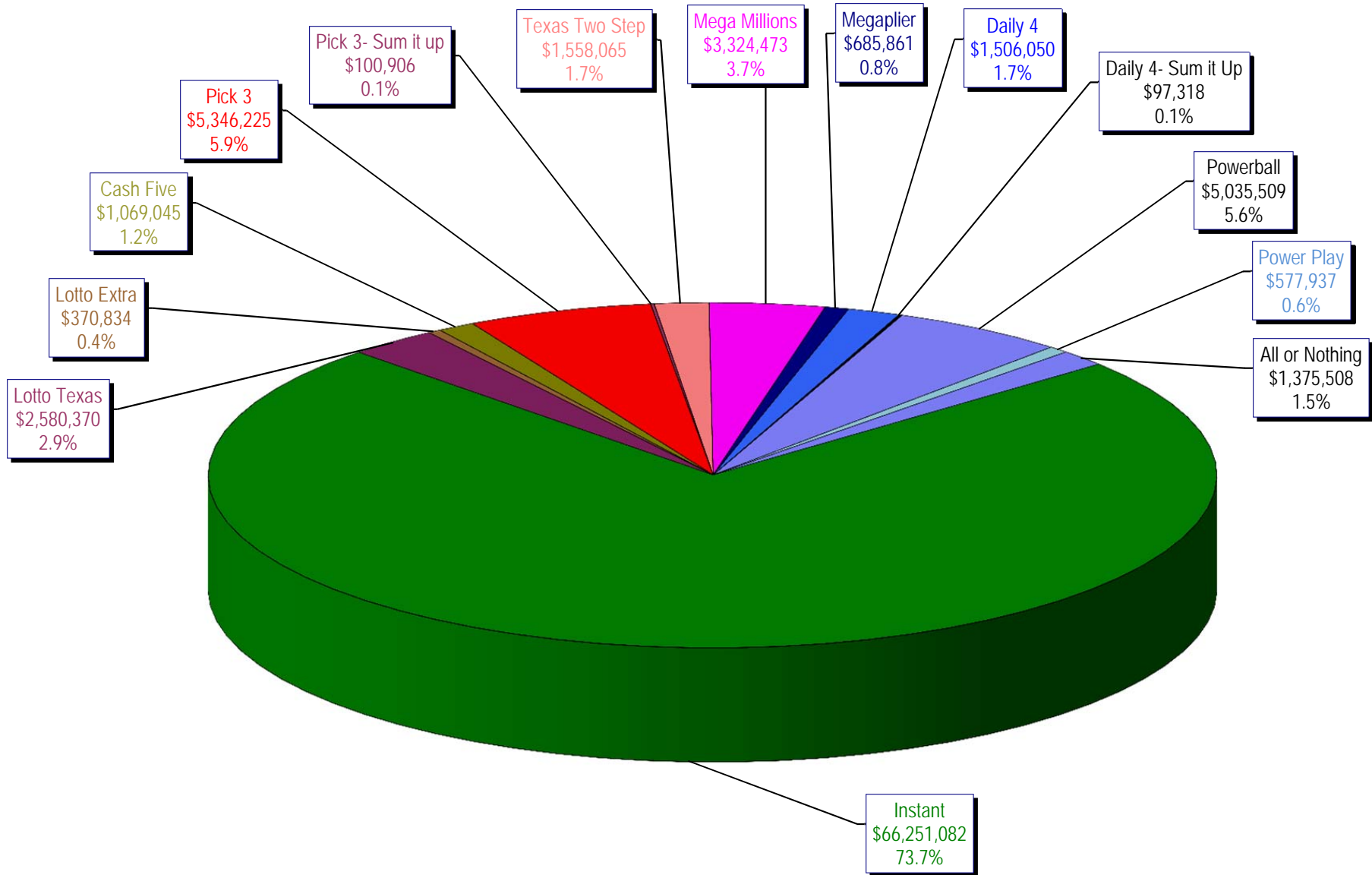
\* Before Unclaimed Prizes

\*\* Estimated; depends on # of guaranteed prizes won in Texas

Texas Lottery Commission  
Instant Ticket Sales  
For the Week Ending 05/04/13  
(Unaudited)



**Texas Lottery Commission**  
**All Game Sales**  
**For the Week Ending 05/04/13**  
**(Unaudited)**



Texas Lottery Commission - Weekly Sales Summary for FY 2013 (Unaudited)

Week Ended	Instant Games	New Games & Dates	Lotto Texas	Jackpot W	S	Lotto Extra	Pick 3	Pick 3 Sum It Up	Cash Five	Texas Two Step	Jackpot M	TH	Mega Millions	Jackpot T	F	Megaplier	Daily 4	Daily 4 Sum It Up	Powerball	Jackpot W	S	Power Play	All or Nothing	Total	Per Cap.
9/1/2012	56,975,312	1446 (\$1, N); 1444 (\$2, N) - 08/23/12	2,972,415	12	13		4,967,337	105,441	1,198,597	1,456,689	500	675	2,769,421	73	83	612,072	1,419,103	97,265	2,680,694	70	80	364,030		75,617,375	2.95
9/8/2012	56,941,761	1440 (\$2, N); 1458 (\$3, N); 1459 (\$5, N) - 09/03/12	3,005,564	14	15		5,112,132	106,959	1,185,494	1,179,003	875	200	3,140,536	93	105	665,392	1,412,279	99,861	3,002,910	90	100	395,287		76,247,178	2.97
9/15/2012	56,302,875	1452 (\$3, N) - 09/10/12	2,999,894	16	17		4,785,209	95,720	1,118,519	894,412	225	200	2,684,227	120	12	580,869	1,290,478	90,795	3,373,296	110	125	417,470	2,526,342	77,160,105	3.01
9/22/2012	54,974,438	1460 (\$1, N); 1461 (\$5, N) - 09/17/12	2,986,898	18	19		4,611,684	89,173	1,091,440	986,264	225	325	1,874,336	15	12	452,082	1,258,191	86,390	4,122,790	149	174	479,344	2,531,686	75,544,715	2.94
9/29/2012	54,606,674	1462 (\$2, N); 1472 (\$10, N) - 09/24/12	3,047,519	20	21		4,708,250	90,752	1,077,739	1,313,257	475	625	1,884,366	14	21	452,334	1,278,847	87,211	3,779,359	200	40	445,091	2,297,966	75,069,364	2.92
10/6/2012	59,223,327	1464 (\$5, N) - 10/01/12	3,164,231	22	23		4,947,571	96,251	1,121,146	1,188,386	800	200	2,055,918	28	36	482,303	1,310,612	89,270	2,266,428	50	40	312,877	2,244,980	78,503,300	3.06
10/13/2012	57,075,606	1465 (\$1, N); 1466 (\$20, N) - 10/08/2012	3,133,742	24	25		4,793,793	89,663	1,074,687	865,146	225	200	2,163,099	45	53	492,614	1,261,858	84,585	2,241,120	50	60	309,684	2,128,476	75,714,073	2.95
10/20/2012	56,630,134	1467 (\$1, N); 1468 (\$5, N) - 10/15/12	3,172,820	26	27		4,959,071	88,413	1,074,980	970,100	225	325	1,984,966	61	12	466,730	1,296,602	84,868	2,447,518	70	80	328,436	2,124,439	75,629,077	2.95
10/27/2012	55,789,743	1469 (\$2, N); 1470 (\$10, N) - 10/22/2012	3,204,694	28	29		5,550,567	96,242	1,063,201	1,226,578	450	600	1,778,725	13	21	430,528	1,381,019	91,618	2,914,062	90	100	371,273	2,021,684	75,919,933	2.96
11/3/2012	58,142,777	1503 (\$5, N) - 10/29/2012	3,392,650	30	31		5,501,964	101,742	1,078,593	860,073	200	225	1,950,117	27	32	462,385	1,393,099	93,773	3,466,242	110	124	424,170	1,913,200	78,780,785	3.07
11/10/2012	57,484,804	1475 (\$1, N); 1476 (\$3, N) - 11/05/2012	3,061,999	32	4		5,468,924	100,767	1,083,928	837,666	200	200	1,783,099	12	13	430,343	1,402,194	94,451	4,246,246	143	168	491,538	1,861,718	78,347,676	3.05
11/17/2012	55,805,228	1477 (\$2, N); 1478 (\$5, N) - 11/12/2012	2,599,190	5	6		5,248,059	91,989	1,059,723	920,319	225	300	1,841,571	19	26	440,783	1,345,121	88,391	5,638,425	185	214	615,323	1,771,812	77,465,933	3.02
11/24/2012	61,331,977	1394 (\$50, N) - 11/19/2012	2,768,876	7	8		5,086,879	91,409	1,021,878	883,407	425	200	2,003,365	33	41	472,723	1,300,693	85,037	10,768,045	250	325	1,053,006	1,637,536	88,504,830	3.45
12/1/2012	58,420,598	0	3,304,053	9	10		5,123,778	97,511	1,086,916	925,805	225	275	2,358,380	49	12	533,175	1,319,684	92,240	43,264,700	550	40	2,894,606	1,797,096	121,218,541	4.72
12/8/2012	62,489,745	1479 (\$1, N); 1485 (\$5, N) - 12/03/12	2,971,837	11	12		5,374,747	101,479	1,129,990	1,359,739	425	575	1,861,503	13	20	445,171	1,391,477	94,879	2,832,293	50	40	362,145	1,704,896	82,119,900	3.20
12/15/2012	59,661,880	0	3,087,087	13	14		5,221,374	98,173	1,104,769	1,928,422	775	1,000	1,933,357	27	35	456,193	1,398,647	88,811	2,808,938	50	40	364,704	1,574,508	79,726,862	3.11
12/22/2012	63,556,886	1481 (\$1, N); 1482 (\$2, N); 1483 (\$5, N) - 12/17/12	3,076,409	15	16		5,170,946	94,116	1,108,894	1,415,548	1,250	200	1,774,922	12	12	431,471	1,385,861	87,012	2,658,349	50	40	349,278	1,531,847	82,641,539	3.22
12/29/2012	63,547,886	0	2,869,329	17	18		4,868,470	90,224	1,041,264	922,869	200	225	1,670,747	18	25	400,587	1,289,758	79,651	2,413,294	50	40	324,222	1,389,460	80,907,760	3.15
1/5/2013	60,452,721	1484 (\$5, N) - 12/31/12	2,962,822	19	20		5,157,831	97,210	1,098,429	1,363,512	350	500	1,865,613	30	39	443,570	1,396,145	87,787	2,524,666	50	60	339,142	1,496,322	79,285,768	3.09
1/12/2013	58,862,997	1386 (\$2, N); 1536 (\$10, N) - 01/07/2013	2,588,023	4	5		4,974,232	92,872	1,079,444	1,622,926	700	900	2,036,427	47	55	471,998	1,345,510	81,625	2,755,940	70	80	349,383	1,480,788	77,742,164	3.03
1/19/2013	58,494,057	01/14/2013; 1538 (\$3, N) - 01/17/2013;	2,670,967	6	7		5,115,846	99,182	1,069,099	906,490	200	225	2,214,850	62	70	498,541	1,374,543	87,921	3,323,356	90	100	408,226	1,488,984	77,752,061	3.03
1/26/2013	57,871,744	0	2,733,016	8	9		4,936,726	91,918	1,047,379	1,178,148	325	475	2,367,780	80	89	526,051	1,401,635	87,842	3,808,150	110	130	454,194	1,460,376	77,964,959	3.04
2/2/2013	61,846,715	1489 (\$2, N); 1486 (\$20, N) - 01/28/2013	2,754,143	10	11		5,220,197	96,971	1,066,170	1,109,445	650	200	1,731,470	12	13	423,745	1,460,770	96,289	5,037,974	151	176	570,151	1,465,010	82,879,050	3.23
2/9/2013	70,374,906	(\$5, N) - 2/4/13; 1537 (\$3, N) - 2/5/13	2,893,143	12	13		5,374,541	101,860	1,110,298	1,053,776	225	325	1,785,080	19	12	435,112	1,483,017	96,782	4,830,224	208	40	551,530	1,468,476	91,558,544	3.57
2/16/2013	71,002,438	1451 (\$3, N); 1453 (\$5, N) - 2/11/13	2,910,257	14	15		5,397,708	99,470	1,091,337	1,430,815	475	650	1,770,362	13	20	431,516	1,502,480	92,250	2,752,192	50	60	366,358	1,450,452	90,297,635	3.52
2/23/2013	71,203,934	1496 (\$1, N); 1399 (\$2, N); 1495 (\$5, N) - 2/18/13; 1450 (\$2, N) - 2/22/13	2,716,839	16	4		5,343,246	99,957	1,083,596	1,849,824	850	1,100	1,759,469	26	12	429,347	1,473,358	91,116	3,067,388	70	80	394,142	1,421,708	90,933,923	3.54
3/2/2013	74,551,567	1474 (\$2, N) - 2/25/13	2,667,146	5	6		5,664,284	109,000	1,111,025	954,451	200	225	1,801,090	13	19	443,330	1,627,457	108,647	3,852,426	90	103	475,464	1,464,008	94,829,894	3.69
3/9/2013	75,360,138	1427 (\$1, N); 1497 (\$2, N); 1498 (\$5, N) - 3/4/13	2,711,613	7	8		5,687,827	106,680	1,111,266	1,024,080	325	200	1,914,669	26	33	465,588	1,592,687	105,438	4,739,852	123	150	558,580	1,429,484	96,807,901	3.77
3/16/2013	70,065,528	0	2,704,692	9	10		5,296,558	99,894	1,069,350	982,380	225	325	1,796,816	41	12	443,221	1,497,910	96,023	6,065,856	183	216	682,736	1,320,128	92,121,091	3.59
3/23/2013	70,137,284	1499 (\$1, N); 1500 (\$5, N) - 3/18/13	2,572,262	4	4		5,315,709	100,840	1,072,767	859,810	200	200	1,808,889	13	20	449,461	1,524,260	99,002	12,246,011	260	320	1,227,175	1,432,838	98,846,308	3.85
3/30/2013	68,758,522	0	2,606,382	5	6		5,301,324	99,384	1,075,802	995,045	225	300	1,902,475	26	34	458,139	1,499,789	95,154	2,681,422	40	50	363,584	1,518,592	87,355,613	3.40
4/6/2013	73,270,054	1501 (\$2, N); 1506 (\$3, N); 1471 (\$5, N) - 4/1/13	2,599,044	7	4		5,604,670	105,096	1,113,516	1,442,797	450	625	2,176,834	42	50	503,159	1,610,636	103,097	2,793,981	40	50	377,717	1,618,445	93,319,046	3.63
4/13/2013	64,738,900	0	2,446,701	5	6		5,338,308	100,575	1,079,753	1,245,341	825	200	2,326,285	56	66	524,253	1,550,435	92,346	3,014,428	60	70	401,719	1,577,650	84,436,693	3.29
4/20/2013	63,252,072	1491 (\$1, N); 1505 (\$5, N); 1473 (\$5, N) - 4/15/13	2,818,780	5	5.25	401.661	5,239,302	99,844	1,060,275	903,889	200	225	2,467,440	74	83	541,931	1,479,524	91,413	3,254,662	80	95	416,958	1,469,404	83,497,155	3.25
4/27/2013	62,766,647	0	2,475,171	6	5.75	348.710	5,041,109	96,530	1,032,823	1,159,837	325	475	2,891,419	92	103	606,592	1,436,459	88,843	4,093,281	116	140	493,873	1,398,242	83,929,535	3.27
5/4/2013	66,251,082	1457 (\$2, N); 1539 (\$3, N); 1508 (\$5, N); 1511 (\$20, N) - 4/29/13; 1540 (\$3, N) - 5/2/13; 1545 (\$5, N) - 5/3/13	2,580,370	6	6.25	370.834	5,346,225	100,906	1,069,045	1,558,065	625	825	3,324,473	114	126	685,861	1,506,050	97,318	5,035,509	1					