



WEEKLY SALES SUMMARY

Unaudited

Week Ending: 5/05/2018

Texas Lottery Commission
Fiscal Year to Date Sales Comparison
Unaudited

Through the Week Ending 5/05/2018 (36 Weeks)

Sales by Game	FY 2016 *	FY 2017 **	FY 2018	\$ Change		% Change	
				FY 2018 to FY 2016	FY 2018 to FY 2017	FY 2018 to FY 2016	FY 2018 to FY 2017
Scratch Tickets	\$ 2,561,931,485	\$ 2,681,475,007	\$ 2,996,797,302	\$ 434,865,817	\$ 315,322,295	17.0%	11.8%
Lotto Texas	85,787,792	78,089,471	79,888,361	-5,899,431	1,798,890	-6.9%	2.3%
Lotto Extra	14,994,685	15,268,121	17,592,528	2,597,843	2,324,407	17.3%	15.2%
Pick 3	176,573,626	172,079,399	174,582,481	-1,991,145	2,503,082	-1.1%	1.5%
Pick 3 Sum It Up	3,619,277	3,292,153	3,485,345	-133,932	193,192	-3.7%	5.9%
Cash Five	32,111,530	30,118,190	28,955,361	-3,156,169	-1,162,829	-9.8%	-3.9%
Texas Two Step	37,534,276	37,646,539	36,677,331	-856,945	-969,208	-2.3%	-2.6%
Mega Millions	86,499,491	77,200,198	145,354,167	58,854,676	68,153,969	68.0%	88.3%
Megaplier	22,061,878	20,999,086	23,626,755	1,564,877	2,627,669	7.1%	12.5%
MM Just the Jackpot	-	-	1,165,098	1,165,098	1,165,098	-	-
Daily 4	62,260,861	64,906,882	73,449,931	11,189,070	8,543,050	18.0%	13.2%
Daily 4 Sum It Up	3,295,390	3,500,332	3,963,369	667,979	463,037	20.3%	13.2%
Powerball	371,047,994	155,704,619	187,511,948	-183,536,046	31,807,329	-49.5%	20.4%
Power Play	41,253,475	22,092,909	27,788,878	-13,464,597	5,695,969	-32.6%	25.8%
All or Nothing	21,501,036	19,834,922	19,836,331	-1,664,705	1,409	-7.7%	0.0%
Texas Triple Chance	17,735,932	10,270,114	8,428,239	-9,307,693	-1,841,875	-52.5%	-17.9%
Total	\$ 3,538,208,727	\$ 3,392,477,942	\$ 3,829,103,424	\$ 290,894,697	\$ 436,625,482	8.2%	12.9%

* 3 extra days

** 1 extra day

Texas Lottery Commission
Fiscal Year to Date Cumulative Average Sales Comparison
Unaudited

Through the Week Ending 5/05/2018 (36 Weeks)

Sales by Game	FY 2016	FY 2017	FY 2018
Scratch Tickets	\$ 10,247,726	\$ 10,812,399	\$ 12,132,783
Lotto Texas	343,151	314,877	323,435
Lotto Extra	59,979	61,565	71,225
Pick 3	706,295	693,869	706,812
Pick 3 Sum It Up	14,477	13,275	14,111
Cash Five	128,446	121,444	117,228
Texas Two Step	150,137	151,801	148,491
Mega Millions	345,998	311,291	588,478
Megaplier	88,248	84,674	95,655
MM Just the Jackpot	-	-	6,132
Daily 4	249,043	261,721	297,368
Daily 4 Sum It Up	13,182	14,114	16,046
Powerball	1,484,192	627,841	759,158
Power Play	165,014	89,084	112,506
All or Nothing	86,004	79,980	80,309
Texas Triple Chance	* 79,178	41,412	34,122
Total	\$ 14,161,069	\$ 13,679,347	\$ 15,503,858

	thru 5/07/2016	thru 5/06/2017	thru 5/05/2018
	250 days	248 days	247 days
*	224 days	**	190 days

Texas Lottery Commission
Fiscal Year Over Year Change in Sales
Unaudited
FY 2018 Compared to FY 2017

			SCRATCH TICKETS				DRAW GAMES				TOTAL SALES			
FY 2018			FY 2018	FY 2017	Difference	% change - Cumulative Sales	FY 2018	FY 2017	Difference	% change - Cumulative Sales	FY 2018	FY 2017	Difference	% change - Cumulative Sales
Week	Week Ending													
1	9/2/2017 *		\$23,058,926	\$32,980,266	(\$9,921,340)	-30.1%	\$6,902,847	\$10,218,656	(\$3,315,809)	-32.4%	\$29,961,773	\$43,198,922	(\$13,237,149)	-30.6%
2	9/9/2017		\$71,784,232	\$65,952,418	\$5,831,814	8.8%	\$18,779,001	\$19,635,377	(\$856,376)	-4.4%	\$90,563,233	\$85,587,795	\$4,975,438	5.8%
3	9/16/2017		\$72,828,393	\$66,196,270	\$6,632,123	10.0%	\$19,679,292	\$20,915,290	(\$1,235,999)	-5.9%	\$92,507,685	\$87,111,560	\$5,396,125	6.2%
4	9/23/2017		\$71,147,147	\$64,383,005	\$6,764,142	10.5%	\$18,601,742	\$17,451,165	\$1,150,577	6.6%	\$89,748,889	\$81,834,170	\$7,914,719	9.7%
5	9/30/2017		\$74,749,619	\$67,349,951	\$7,399,668	11.0%	\$18,436,682	\$17,519,852	\$916,830	5.2%	\$93,186,301	\$84,869,803	\$8,316,498	9.8%
6	10/7/2017		\$78,134,381	\$71,598,690	\$6,535,691	9.1%	\$19,297,281	\$18,211,107	\$1,086,174	6.0%	\$97,431,662	\$89,809,797	\$7,621,865	8.5%
7	10/14/2017		\$74,084,207	\$69,444,762	\$4,639,445	6.7%	\$19,185,335	\$18,075,261	\$1,110,074	6.1%	\$93,269,542	\$87,520,023	\$5,749,519	6.6%
8	10/21/2017		\$77,631,892	\$69,317,066	\$8,314,826	12.0%	\$19,573,636	\$18,422,336	\$1,151,300	6.2%	\$97,205,528	\$87,739,402	\$9,466,126	10.8%
9	10/28/2017		\$76,385,130	\$69,729,599	\$6,655,531	9.5%	\$18,788,634	\$18,535,248	\$253,386	1.4%	\$95,173,764	\$88,264,847	\$6,908,917	7.8%
10	11/4/2017		\$78,814,323	\$73,451,702	\$5,362,621	7.3%	\$19,564,629	\$20,151,939	(\$587,310)	-2.9%	\$98,378,952	\$93,603,641	\$4,775,312	5.1%
11	11/11/2017		\$78,572,697	\$70,998,320	\$7,574,377	10.7%	\$19,317,440	\$19,925,460	(\$608,020)	-3.1%	\$97,890,137	\$90,923,780	\$6,966,358	7.7%
12	11/18/2017		\$81,674,704	\$75,265,196	\$6,409,508	8.5%	\$19,938,001	\$21,424,637	(\$1,486,636)	-6.9%	\$101,612,705	\$96,689,833	\$4,922,872	5.1%
13	11/25/2017		\$84,916,870	\$68,983,157	\$15,933,713	23.1%	\$19,968,524	\$24,223,331	(\$4,254,808)	-17.6%	\$104,885,393	\$93,206,488	\$11,678,905	12.5%
14	12/2/2017		\$81,453,005	\$72,688,514	\$8,764,491	12.1%	\$21,685,175	\$17,653,328	\$4,031,847	22.8%	\$103,138,180	\$90,341,842	\$12,796,338	14.2%
15	12/9/2017		\$81,251,421	\$71,676,549	\$9,574,872	13.4%	\$21,277,106	\$18,150,590	\$3,126,516	17.2%	\$102,528,526	\$89,827,139	\$12,701,388	14.1%
16	12/16/2017		\$83,850,250	\$73,909,726	\$9,940,524	13.4%	\$23,199,797	\$19,814,333	\$3,385,464	17.1%	\$107,050,047	\$93,724,059	\$13,325,988	14.2%
17	12/23/2017		\$87,941,872	\$77,369,179	\$10,572,693	13.7%	\$27,161,624	\$19,276,415	\$7,885,209	40.9%	\$115,103,496	\$96,645,594	\$18,457,902	19.1%
18	12/30/2017		\$88,089,746	\$80,868,854	\$7,220,892	8.9%	\$36,811,359	\$19,289,161	\$17,522,199	90.8%	\$124,901,105	\$100,158,015	\$24,743,091	24.7%
19	1/6/2018		\$85,627,935	\$73,328,624	\$12,299,311	16.8%	\$61,522,424	\$18,611,644	\$42,910,781	230.6%	\$147,150,359	\$91,940,268	\$55,210,091	60.0%
20	1/13/2018		\$84,788,310	\$73,471,643	\$11,316,667	15.4%	\$19,797,694	\$20,351,397	(\$553,703)	-2.7%	\$104,586,004	\$93,823,040	\$10,762,964	11.5%
21	1/20/2018		\$79,736,335	\$72,229,342	\$7,506,993	10.4%	\$18,928,359	\$20,349,310	(\$1,420,951)	-7.0%	\$98,664,694	\$92,578,652	\$6,086,042	6.6%
22	1/27/2018		\$84,274,095	\$72,056,793	\$12,217,302	17.0%	\$20,031,471	\$21,668,657	(\$1,637,186)	-7.6%	\$104,305,566	\$93,725,450	\$10,580,116	11.3%
23	2/3/2018		\$86,988,911	\$77,292,806	\$9,696,105	12.5%	\$21,857,656	\$22,161,789	(\$304,133)	-1.4%	\$108,846,566	\$99,454,595	\$9,391,972	9.4%
24	2/10/2018		\$89,937,200	\$78,699,192	\$11,238,008	14.3%	\$22,787,411	\$22,100,245	\$687,166	3.1%	\$112,724,611	\$100,799,437	\$11,925,174	11.8%
25	2/17/2018		\$87,786,021	\$77,864,124	\$9,921,897	12.7%	\$23,638,676	\$24,776,465	(\$1,137,789)	-4.6%	\$111,424,697	\$102,640,589	\$8,784,109	8.6%
26	2/24/2018		\$90,755,793	\$80,287,015	\$10,468,778	13.0%	\$23,457,390	\$28,133,116	(\$4,675,726)	-16.6%	\$114,213,183	\$108,420,131	\$5,793,052	5.3%
27	3/3/2018		\$98,824,633	\$87,500,184	\$11,324,449	12.9%	\$26,526,688	\$20,213,859	\$6,312,829	31.2%	\$125,351,321	\$107,714,043	\$17,637,278	16.4%
28	3/10/2018		\$94,905,657	\$84,966,053	\$9,939,604	11.7%	\$27,981,971	\$21,024,757	\$6,957,214	33.1%	\$122,887,628	\$105,990,810	\$16,896,818	15.9%
29	3/17/2018		\$91,348,015	\$82,972,977	\$8,375,038	10.1%	\$30,926,726	\$20,434,291	\$10,492,435	51.3%	\$122,274,741	\$103,407,268	\$18,867,473	18.2%
30	3/24/2018		\$93,810,063	\$82,217,628	\$11,592,435	14.1%	\$24,924,629	\$20,282,992	\$4,641,637	22.9%	\$118,734,692	\$102,500,620	\$16,234,072	15.8%
31	3/31/2018		\$99,679,358	\$86,271,920	\$13,407,438	15.5%	\$32,928,515	\$19,497,142	\$13,431,373	68.9%	\$132,607,872	\$105,769,062	\$26,838,810	25.4%
32	4/7/2018		\$94,700,487	\$81,499,404	\$13,201,083	16.2%	\$21,038,959	\$17,854,294	\$3,184,666	17.8%	\$115,739,446	\$99,353,698	\$16,385,749	16.5%
33	4/14/2018		\$92,913,454	\$81,831,134	\$11,082,320	13.5%	\$21,025,962	\$17,865,636	\$3,160,327	17.7%	\$113,939,416	\$99,696,770	\$14,242,647	14.3%
34	4/21/2018		\$91,480,306	\$80,531,863	\$10,948,443	13.6%	\$21,175,937	\$18,337,257	\$2,838,680	15.5%	\$112,656,242	\$98,869,120	\$13,787,122	13.9%
35	4/28/2018		\$89,436,552	\$81,433,819	\$8,002,733	9.8%	\$21,876,449	\$18,956,981	\$2,919,469	15.4%	\$111,313,001	\$100,390,800	\$10,922,201	10.9%
36	5/5/2018		\$93,435,363	\$84,857,262	\$8,578,101	10.1%	\$23,711,107	\$19,489,624	\$4,221,483	21.7%	\$117,146,470	\$104,346,886	\$12,799,584	12.3%
37	5/12/2018			\$81,090,824				\$19,420,237				\$100,511,061		
38	5/19/2018			\$80,557,866				\$20,939,291				\$101,497,157		
39	5/26/2018			\$78,141,293				\$21,072,651				\$99,213,944		
40	6/2/2018			\$78,991,820				\$23,569,252				\$102,561,072		
41	6/9/2018			\$77,859,970				\$29,337,930				\$107,197,900		
42	6/16/2018			\$75,964,093				\$18,618,777				\$94,582,870		

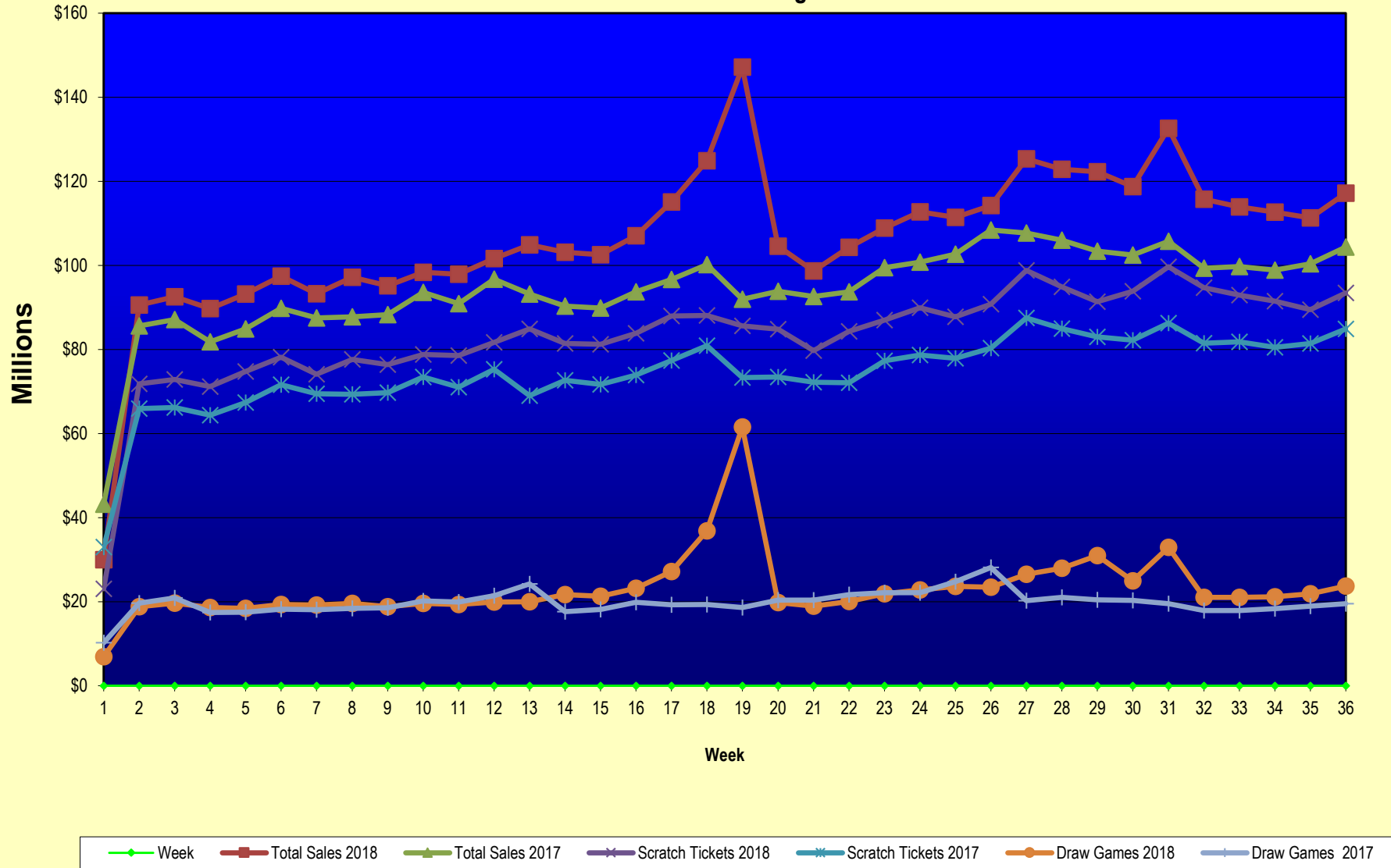
Texas Lottery Commission
Fiscal Year Over Year Change in Sales
Unaudited
FY 2018 Compared to FY 2017

			SCRATCH TICKETS				DRAW GAMES				TOTAL SALES			
FY 2018			FY 2018	FY 2017	Difference	% change - Cumulative Sales	FY 2018	FY 2017	Difference	% change - Cumulative Sales	FY 2018	FY 2017	Difference	% change - Cumulative Sales
Week	Week	Ending												
43	6/23/2018			\$75,379,863				\$18,464,310				\$93,844,173		
44	6/30/2018			\$76,450,854				\$19,685,004				\$96,135,858		
45	7/7/2018			\$75,420,516				\$20,817,697				\$96,238,213		
46	7/14/2018			\$74,068,426				\$21,553,240				\$95,621,666		
47	7/21/2018			\$75,926,884				\$21,909,933				\$97,836,817		
48	7/28/2018			\$68,526,927				\$22,791,762				\$91,318,689		
49	8/4/2018			\$74,104,794				\$27,396,555				\$101,501,349		
50	8/11/2018			\$73,356,820				\$37,340,879				\$110,697,699		
51	8/18/2018			\$74,114,510				\$42,787,014				\$116,901,524		
52	8/25/2018			\$70,061,982				\$55,854,516				\$125,916,498		
	8/31/2018 **			\$43,727,573				\$9,679,652				\$53,407,225		
Total thru Current Week			\$2,996,797,302	\$2,681,475,007	\$315,322,295	11.8%	\$832,306,122	\$711,002,935	\$121,303,187	17.1%	\$3,829,103,424	\$3,392,477,942	\$436,625,482	12.9%
Fiscal Year Total			\$2,996,797,302	\$3,935,220,022			\$832,306,122	\$1,142,241,630			\$3,829,103,424	\$5,077,461,652		

* FY 18 includes 2 days; FY 17 includes 3 days

** FY 18 includes 6 days; FY 17 includes 5 days

Texas Lottery Commission Fiscal Year Over Year Change in Sales



Note: Week 1 is not a full week of sales as this report is prepared on a Fiscal Year basis.

Texas Lottery Commission
Scratch Tickets by Price Point
Sales, Prize Expense, Sales Contribution and Payout Percentage With Year Over Year Changes
 Unaudited

Fiscal Year	Price Point	# of Active Games	FY Sales	% of Scratch Ticket Sales	Year over Year Change in Sales	FY Prize Expense	Year over Year Change in Prize Expense	FY Sales Contribution	Year over Year Change in Contribution	Average Prize Payout %	Year over Year Change in Payout %
2017	\$1.00	22	103,430,560	3.9%		62,363,768		41,066,792		60.3%	0.1%
Through	\$2.00	28	225,897,928	8.4%		147,039,215		78,858,713		65.1%	-0.1%
5/6/2017	\$3.00	12	185,000,784	6.9%		121,987,150		63,013,634		65.9%	0.1%
	\$5.00	53	850,656,365	31.7%		578,072,294		272,584,071		68.0%	0.0%
	\$10.00	20	606,589,660	22.6%		426,779,324		179,810,336		70.4%	0.3%
	\$20.00	13	569,310,060	21.2%		426,611,830		142,698,230		74.9%	0.0%
	\$30.00	0	0	0.0%		0		0		0.0%	0.0%
	\$50.00	5	140,589,650	5.2%		109,424,723		31,164,927		77.8%	0.1%
Total		153	\$2,681,475,007			\$1,872,278,304		\$809,196,703		69.8%	0.4%
2018	\$1.00	21	110,726,817	3.7%		66,742,472		43,984,345		60.3%	0.0%
Through	\$2.00	23	204,606,266	6.8%		132,962,869		71,643,397		65.0%	-0.2%
5/5/2018	\$3.00	12	204,598,632	6.8%		134,991,855		69,606,777		66.0%	0.1%
	\$5.00	54	840,710,027	28.1%		571,708,012		269,002,015		68.0%	0.1%
	\$10.00	19	679,633,930	22.7%		476,391,783		203,242,147		70.1%	-0.3%
	\$20.00	17	669,013,580	22.3%		501,461,272		167,552,308		75.0%	0.0%
	\$30.00	1	44,916,450	1.5%		33,712,333		11,204,117		75.1%	0.0%
	\$50.00	5	242,591,600	8.1%		189,060,962		53,530,638		77.9%	0.0%
Total		152	\$2,996,797,302			\$2,107,031,557		\$889,765,745		70.3%	0.6%
Variance	\$1.00	-1	7,296,257		7.1%	4,378,704	7.0%	2,917,553	7.1%	-0.02%	
2018 to	\$2.00	-5	-21,291,662		-9.4%	-14,076,346	-9.6%	-7,215,316	-9.1%	-0.11%	
2017	\$3.00	0	19,597,848		10.6%	13,004,705	10.7%	6,593,143	10.5%	0.04%	
	\$5.00	1	-9,946,338		-1.2%	-6,364,282	-1.1%	-3,582,056	-1.3%	0.05%	
	\$10.00	-1	73,044,270		12.0%	49,612,459	11.6%	23,431,811	13.0%	-0.26%	
	\$20.00	4	99,703,520		17.5%	74,849,442	17.5%	24,854,078	17.4%	0.02%	
	\$30.00	1	44,916,450		100.0%	33,712,333	100.0%	11,204,117	100.0%	75.06%	
	\$50.00	0	102,001,950		72.6%	79,636,239	72.8%	22,365,711	71.8%	0.10%	
Total		-1	\$315,322,295		11.8%	\$234,753,253	12.5%	\$80,569,042	10.0%	0.49%	
Notes - Scratch Ticket Variances											

Texas Lottery Commission
Scratch Tickets by Price Point
Sales, Prize Expense, Sales Contribution and Payout Percentage With Year Over Year Changes
Unaudited

		FY 2018		FY 2017		Difference
Sales	\$1 - \$5		\$1,360,641,742		\$1,364,985,637	-\$4,343,895
Prize Exp.	\$1 - \$5		\$906,405,208		\$909,462,427	-\$3,057,219
Sales Cont.	\$1 - \$5		\$454,236,534		\$455,523,210	-\$1,286,676
Prize Exp. %	\$1 - \$5		66.6%		66.6%	0.0%
		FY 2018		FY 2017		Difference
Sales	\$10 - \$50		\$1,636,155,560		\$1,316,489,370	\$319,666,190
Prize Exp.	\$10 - \$50		\$1,200,626,349		\$962,815,877	\$237,810,473
Sales Cont.	\$10 - \$50		\$435,529,211		\$353,673,493	\$81,855,717
Prize Exp. %	\$10 - \$50		73.4%		73.1%	0.2%
		FY 2018		FY 2017		Difference
Sales	Scratch		\$2,996,797,302		\$2,681,475,007	\$315,322,295
Prize Exp.	Scratch		\$2,107,031,557		\$1,872,278,304	\$234,753,253
Sales Cont.	Scratch		\$889,765,745		\$809,196,703	\$80,569,042
Prize Exp. %	Scratch		70.3%		69.8%	0.5%

		FY 2018		FY 2017		Difference
Sales	\$1 - \$10		\$2,040,275,672		\$1,971,575,297	\$68,700,375
Prize Exp.	\$1 - \$10		\$1,382,796,991		\$1,336,241,751	\$46,555,240
Sales Cont.	\$1 - \$10		\$657,478,681		\$635,333,546	\$22,145,135
Prize Exp. %	\$1 - \$10		67.8%		67.8%	0.0%
		FY 2018		FY 2017		Difference
Sales	\$20 - \$50		\$956,521,630		\$709,899,710	\$246,621,920
Prize Exp.	\$20 - \$50		\$724,234,567		\$536,036,553	\$188,198,013
Sales Cont.	\$20 - \$50		\$232,287,063		\$173,863,157	\$58,423,907
Prize Exp. %	\$20 - \$50		75.7%		75.5%	0.2%
		FY 2018		FY 2017		Difference
Sales	Scratch		\$2,996,797,302		\$2,681,475,007	\$315,322,295
Prize Exp.	Scratch		\$2,107,031,557		\$1,872,278,304	\$234,753,253
Sales Cont.	Scratch		\$889,765,745		\$809,196,703	\$80,569,042
Prize Exp. %	Scratch		70.3%		69.8%	0.5%

**Texas Lottery Commission
Weekly Sales Summary
& Comparison to Previous Week
Unaudited**

	Week Ending 5/05/2018	% of Sales	Week Ending 4/28/2018	% of Sales	\$ change	% change
	<u>THIS WEEK</u>		<u>LAST WEEK</u>			
Total Sales	<u>\$117,146,470</u>		<u>\$111,313,001</u>		<u>\$5,833,469</u>	5.24%
Scratch Tickets	<u>\$93,435,363</u>	79.8%	<u>\$89,436,552</u>	80.3%	<u>\$3,998,811</u>	4.47%
Lotto	\$2,617,933	2.2%	\$2,527,306	2.3%	\$90,627	3.59%
Lotto Extra	\$595,092	0.5%	\$571,217	0.5%	\$23,875	4.18%
Pick 3	\$5,392,077	4.6%	\$5,065,622	4.6%	\$326,455	6.44%
Pick 3 Sum It Up	\$106,361	0.1%	\$97,731	0.1%	\$8,631	8.83%
Cash Five	\$833,865	0.7%	\$796,149	0.7%	\$37,716	4.74%
Texas Two Step	\$1,471,176	1.3%	\$1,154,601	1.0%	\$316,575	27.42%
Mega Millions	\$3,538,706	3.0%	\$3,256,120	2.9%	\$282,586	8.68%
Megaplier	\$572,931	0.5%	\$527,004	0.5%	\$45,927	8.71%
MM Just the Jackpot	\$24,072	0.0%	\$22,452	0.0%	\$1,620	7.22%
Daily 4	\$2,207,056	1.9%	\$2,093,575	1.9%	\$113,481	5.42%
Daily 4 Sum It Up	\$119,527	0.1%	\$107,072	0.1%	\$12,456	11.63%
Powerball	\$4,727,848	4.0%	\$4,252,487	3.8%	\$475,361	11.18%
Power Play	\$729,786	0.6%	\$661,592	0.6%	\$68,194	10.31%
All or Nothing	\$567,296	0.5%	\$542,776	0.5%	\$24,520	4.52%
Texas Triple Chance	\$207,382	0.2%	\$200,746	0.2%	\$6,636	3.31%
Total Draw Game Sales	<u>\$23,711,107</u>		<u>\$21,876,449</u>		<u>\$1,834,658</u>	8.39%

* Totals may not sum due to rounding.

**Texas Lottery Commission
Weekly Sales Summary
Unaudited**

**SCRATCH TICKETS
TOP TEN SELLING GAMES**

For the week ending: 5/05/2018

Rank	Price Point	Game	Sales (Millions)
1	\$ 30	\$750 MILLION WINNER'S CIRCLE	\$ 6.071
2	\$ 20	100X THE CASH	\$ 5.224
3	\$ 10	MEGA LOTERIA	\$ 5.198
4	\$ 5	20X THE CASH	\$ 4.360
5	\$ 50	ULTIMATE 7'S	\$ 4.115
6	\$ 5	SUPER LOTERIA	\$ 4.080
7	\$ 10	SUPER 7'S	\$ 3.318
8	\$ 20	MEGA 7'S	\$ 3.208
9	\$ 10	\$250,000 CASH WINFALL	\$ 2.928
10	\$ 20	\$100 MILLION TEXAS RICHES	\$ 2.752

**Texas Lottery Commission
Prize Payout Tracking Report
Unaudited**

Through the week ending: 5/05/2018

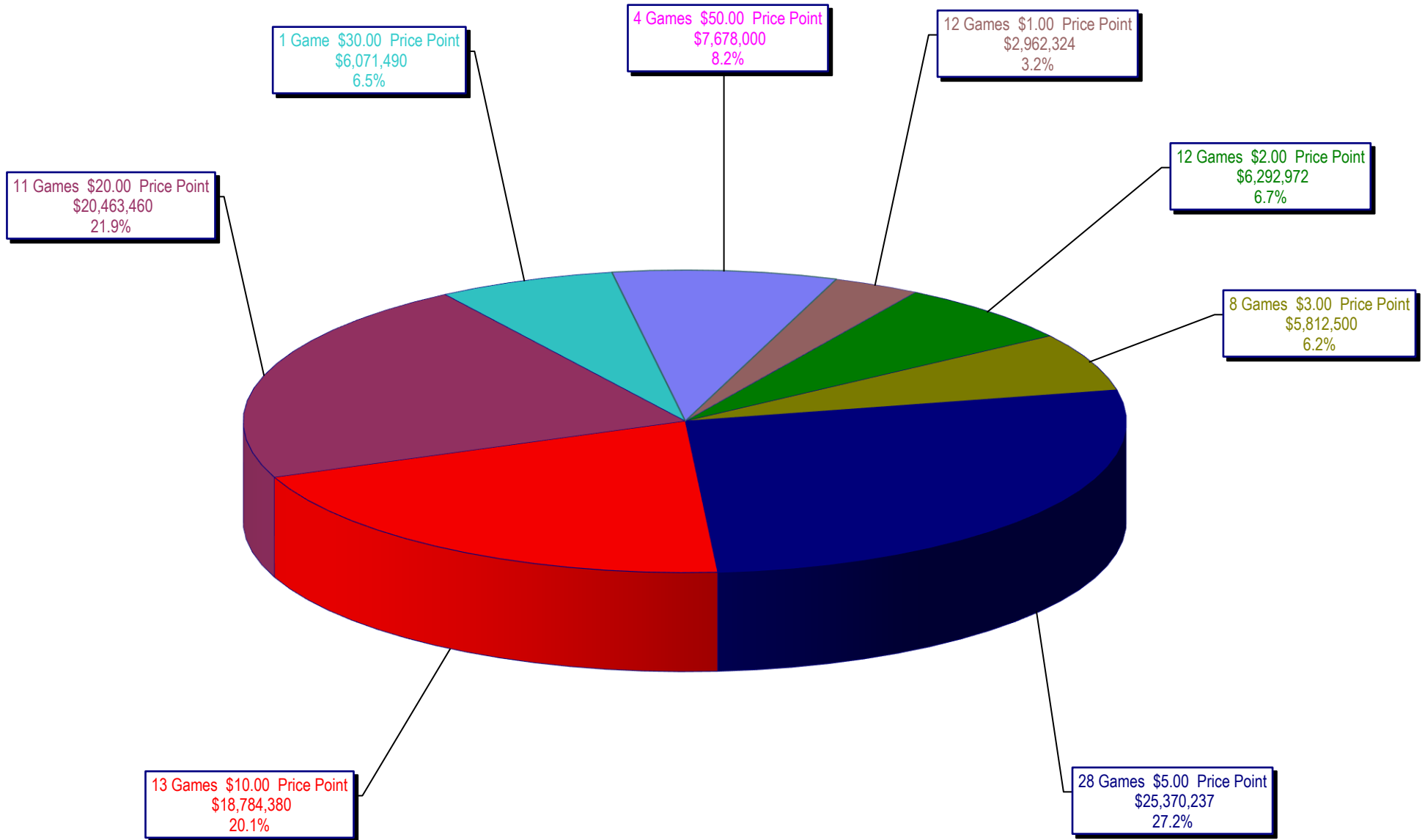
Draw Game Sales

		FY Sales Through Week Ending 5/5/2018		FY Prize Expense Through Week Ending 5/5/2018	Actual* Prize Payout	Base Payout (Prize Pool)
Lotto	\$	79,888,361	\$	45,581,010	57.06%	50.00%
Lotto Extra		17,592,528		9,798,278	55.70%	53.70%
Pick 3		174,582,481		86,286,090	49.42%	50.00%
Pick 3 Sum It Up		3,485,345		1,584,817	45.47%	50.00%
Cash Five		28,955,361		14,477,681	50.00%	50.00%
Texas Two Step		36,677,331		18,234,153	49.72%	50.00%
Mega Millions		145,354,167		76,135,592	52.38%	50.00%**
Megaplier		23,626,755		11,977,061	50.69%	N/A
MM Just the Jackpot		1,165,098		581,605	49.92%	50.00%**
Daily 4		73,449,931		38,153,475	51.94%	50.00%
Daily 4 Sum It Up		3,963,369		1,616,465	40.79%	50.00%
Powerball		187,511,948		93,917,141	50.09%	50.00%**
Power Play		27,788,878		13,922,232	50.10%	N/A
All or Nothing		19,836,331		11,865,352	59.82%	55.98%
Texas Triple Chance		8,428,239		4,128,403	48.98%	54.42%
Totals	\$	832,306,122	\$	428,259,355	51.45%	

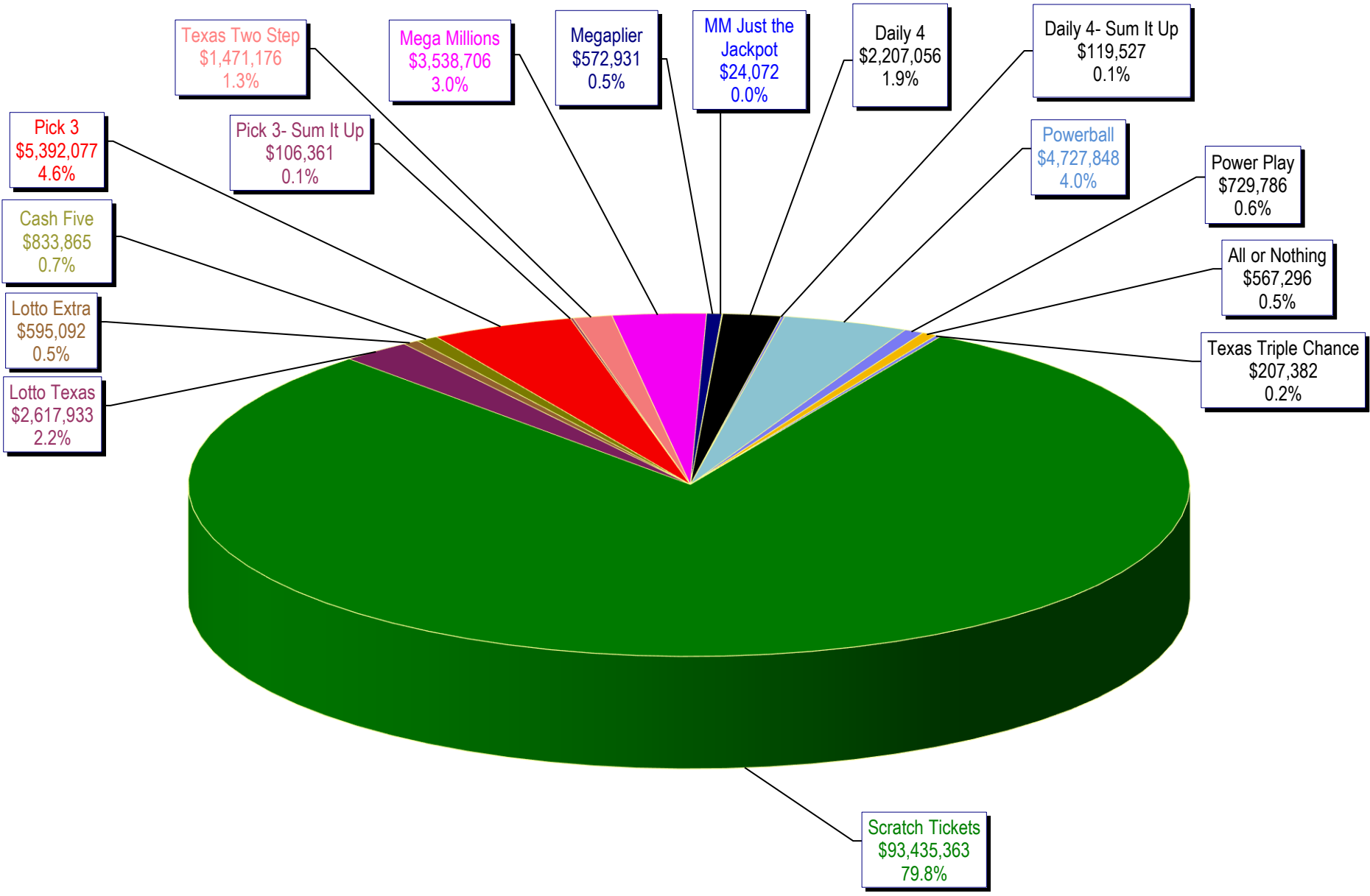
* Before Unclaimed Prizes

**Estimated; depends on # of guaranteed prizes won in Texas

Texas Lottery Commission
Scratch Ticket Sales
For the week ending 5/05/2018
(Unaudited)



Texas Lottery Commission
All Game Sales
For the week ending 5/05/2018
(Unaudited)



Texas Lottery Commission - Weekly Sales Summary for FY 2018 (Unaudited)

Week Ended	Scratch Tickets	New Games & Dates	Lotto Texas	Jackpot W S		Lotto Extra	Pick 3	Pick 3 Sum It Up	Cash Five	Texas Two Step	Jackpot M 7H		Mega Millions	Jackpot T F		Megaplier	MM Just the Jackpot	Daily 4	Daily 4 Sum It Up	Powerball	Jackpot W S		Power Play	All or Nothing	Texas Triple Chance	Total	Per Cap.
9/2/2017	66,786,499	0	1,882,138	7.75	8	407,969	4,127,448	87,462	745,315	757,964	225	250	1,839,333	45	53	546,532		1,675,002	88,460	3,160,562	53	68	527,201	510,296	226,818	83,368,998	2.99
9/9/2017	71,784,232	1894 (\$1.N); 1895 (\$3.N); 1896 (\$5.N); 1897 (\$10.N); 1898 (\$20.N) - 9/05/17	2,030,456	8.25	9	434,404	4,673,693	94,976	810,225	814,157	200	225	2,116,454	61	70	610,101		1,864,288	98,842	3,815,824	83	102	614,504	550,992	250,086	90,563,233	3.25
9/16/2017	72,828,393	0	2,072,973	9.5	10.25	441,815	4,761,239	95,825	803,128	1,009,847	275	400	2,218,181	76	86	632,423		1,969,938	107,496	4,120,318	115	132	647,273	549,860	248,976	92,507,685	3.32
9/23/2017	71,147,147	2000 (\$5.N); 1885 (\$10.N) - 9/18/17	2,083,698	10.75	11.5	444,009	4,652,157	91,944	799,261	958,113	550	200	2,417,135	94	104	676,790		1,999,292	111,399	3,062,637	40	53	505,638	554,074	245,596	89,748,889	3.22
9/30/2017	74,749,619	0	2,123,157	12	12.75	453,258	4,787,745	93,462	817,582	914,011	225	300	1,798,854	15	20	540,169		2,140,708	114,176	3,298,744	66	80	535,906	567,658	251,252	93,186,301	3.34
10/7/2017	78,134,381	1857 (\$1.N); 1871 (\$5.N); 2002 (\$20.N) - 10/02/17	2,158,233	13.5	14	461,982	4,884,513	93,622	837,916	1,157,363	425	575	1,859,000	25	30	555,420		2,086,885	112,246	3,678,352	94	112	585,624	570,242	255,884	97,431,662	3.50
10/14/2017	74,084,207	0	2,161,597	14.75	15.5	460,731	4,743,121	91,735	812,165	832,638	200	225	1,899,412	36	43	564,073		2,060,922	109,910	4,013,728	128	143	621,796	564,614	248,894	93,269,542	3.35
10/21/2017	77,631,892	2003 (\$2.N); 2004 (\$5.N); 1899 (\$50.N) - 10/16/17	2,191,085	16	16.75	466,612	4,682,503	94,156	810,073	1,008,511	300	425	1,677,423	15	20	505,340		2,117,469	116,022	4,422,740	156	173	670,007	563,200	248,496	97,205,528	3.49
10/28/2017	76,385,130	0	2,227,162	17.25	18.25	475,194	4,854,638	92,765	797,066	786,381	200	200	1,737,391	25	30	493,983	22,971	2,144,198	121,467	3,852,082	191	40	595,303	547,396	240,638	95,173,784	3.42
11/4/2017	78,814,323	0	2,333,965	18.75	19.25	494,349	4,926,697	96,245	820,269	887,674	225	275	2,753,000	40	48	421,360	112,668	2,205,239	114,585	3,078,822	52	64	500,061	571,658	248,038	98,378,952	3.53
11/11/2017	78,572,697	2005 (\$1.N); 2006 (\$3.N); 2007 (\$5.N); 2008 (\$10.N) - 11/06/17	2,315,922	19.75	20.5	490,024	4,901,274	94,521	817,975	894,972	400	200	2,652,012	59	71	410,066	62,832	2,069,360	110,879	3,183,712	75	90	507,890	563,738	242,264	97,890,137	3.51
11/18/2017	81,674,704	2085 (\$2.N); 1891 (\$5.N); 2011 (\$10.N) - 11/15/17	2,379,541	21.25	21.75	504,693	4,782,395	93,156	818,168	882,520	225	275	2,820,440	82	95	433,282	53,445	2,053,707	108,480	3,638,718	103	119	564,829	562,306	242,322	101,612,705	3.65
11/25/2017	84,916,870	0	2,353,671	22.5	23.25	504,985	4,590,443	87,556	779,967	1,056,541	400	525	2,980,136	106	119	452,693	45,225	1,908,926	99,032	3,780,406	134	149	582,194	522,808	223,942	104,885,393	3.76
12/2/2017	81,453,005	1862 (\$5.N) - 11/29/17	2,485,060	24	24.75	527,939	4,873,294	92,503	822,515	1,037,952	700	200	3,461,973	132	145	516,938	45,540	2,057,256	111,002	4,218,618	163	177	638,061	556,758	239,766	103,138,180	3.70
12/9/2017	81,251,421	2019 (\$1.N); 2010 (\$5.N); 2014 (\$20.N) - 12/04/17	1,889,914	5	5	412,797	4,711,132	88,700	815,769	867,201	225	275	3,625,922	160	176	538,523	45,915	2,019,801	112,110	4,674,778	193	212	693,130	546,064	235,350	102,528,526	3.68
12/16/2017	83,850,250	1877 (\$5.N) - 12/11/17	1,956,432	5.25	5.5	429,971	4,788,793	92,152	818,587	899,138	400	200	4,204,546	191	208	610,115	45,642	2,099,981	116,295	5,539,284	229	250	809,986	551,440	237,436	107,050,047	3.84
12/23/2017	87,941,872	1879 (\$2.N); 2013 (\$5.N) - 12/18/17	2,124,516	5	5.25	469,230	4,942,394	97,078	837,255	918,506	225	275	5,341,776	223	253	751,656	48,156	2,180,958	120,594	7,471,900	269	300	1,054,970	557,540	245,096	115,103,496	4.13
12/30/2017	88,089,746	0	2,360,842	5.5	5.75	519,750	4,652,815	94,254	811,994	1,034,373	400	550	8,764,544	277	306	1,147,310	65,076	2,060,790	119,090	12,711,198	337	384	1,676,130	555,378	237,816	124,901,105	4.48
1/6/2018	85,627,935	2012 (\$1.N); 2016 (\$3.N); 2020 (\$5.N); 2018 (\$10.N); 2021 (\$20.N) - 1/02/18	2,549,259	6	6.25	569,992	4,638,623	101,857	819,523	806,400	200	225	17,181,579	361	450	2,125,075	99,750	1,971,281	118,574	26,448,160	460	570	3,306,119	536,082	250,152	147,150,359	5.28
1/13/2018	84,788,310	2078 (\$2.N) - 1/10/18	2,040,927	6.5	6.75	448,742	4,766,520	102,572	825,080	1,089,485	300	425	2,922,316	40	45	466,464	29,142	1,999,808	111,260	3,619,230	40	50	576,948	559,134	240,066	104,586,004	3.75
1/20/2018	79,736,335	1874 (\$2.N); 2023 (\$5.N) - 01/15/18	1,966,838	7	7.25	435,886	4,577,006	94,097	795,104	1,022,928	600	200	2,755,698	50	55	444,651	27,351	1,874,998	99,795	3,508,516	62	78	562,582	531,264	231,646	98,664,694	3.54
1/27/2018	84,274,095	0	2,035,827	7.5	7.75	453,370	4,700,198	94,322	814,607	930,734	225	300	3,019,030	63	76	484,896	26,847	2,022,100	105,822	3,921,400	92	112	620,657	563,096	238,566	104,305,566	3.74
2/3/2018	86,988,911	0	2,109,623	8.25	9	472,504	5,142,594	103,765	837,769	1,260,482	425	575	3,268,918	89	104	523,436	28,656	2,142,446	116,232	4,349,986	127	145	683,141	575,884	242,220	108,846,566	3.91
2/10/2018	89,937,200	1622 (\$1.N); 2025 (\$5.N); 1884 (\$20.N) - 02/05/18	2,111,426	9.5	10.25	471,879	5,202,565	103,949	834,193	1,760,463	750	975	3,471,268	120	136	548,853	28,242	2,104,711	116,909	4,522,707	165	184	701,337	568,804	240,106	112,724,611	4.05
2/17/2018	87,786,021	0	2,179,635	11	11.75	485,269	5,328,504	110,653	829,413	1,385,566	1,225	200	3,788,869	153	168	581,183	29,718	2,101,483	112,159	5,169,501	203	223	780,285	561,011	235,428	111,424,697	4.00

Texas Lottery Commission - Weekly Sales Summary for FY 2018 (Unaudited)

Week Ended	Scratch Tickets	New Games & Dates	Lotto Texas	Jackpot W	S	Lotto Extra	Pick 3	Pick 3 Sum It Up	Cash Five	Texas Two Step	Jackpot M	7H	Mega Millions	Jackpot T	F	Megaplier	MM Just the Jackpot	Daily 4	Daily 4 Sum It Up	Powerball	Jackpot W	S	Power Play	All or Nothing	Texas Triple Chance	Total	Per Cap.
2/24/2018	90,755,793	2029 (\$2.N); 2029 (\$5.N); 2030 (\$50.N) - 02/19/18	2,147,662	12.25	13	483,804	5,191,795	105,127	816,514	933,192	225	300	3,912,974	185	204	599,464	29,316	2,092,759	112,471	5,417,554	246	269	812,503	567,576	234,680	114,213,183	4.10
3/3/2018	98,824,633	0	2,307,102	13.75	14.5	523,709	5,663,255	118,728	859,761	911,212	200	225	4,653,007	222	243	697,471	30,489	2,322,805	124,062	6,499,211	293	321	956,418	606,052	253,407	125,351,321	4.50
3/10/2018	94,905,657	2024 (\$1.N); 2033 (\$5.N); 2026 (\$10.N) - 03/05/18	2,333,008	15	15.75	529,262	5,407,567	109,792	846,315	1,119,036	325	475	5,087,864	265	290	752,000	32,994	2,211,865	122,015	7,510,400	348	385	1,074,892	597,680	247,282	122,887,628	4.41
3/17/2018	91,348,015	2081 (\$3.N) - 03/15/18	2,398,123	16.5	17.25	547,944	5,121,425	103,955	822,331	862,079	200	225	6,178,840	318	345	897,270	35,697	2,079,060	110,881	9,609,522	420	455	1,349,420	572,372	237,808	122,274,741	4.39
3/24/2018	93,810,063	1893 (\$2.N); 2036 (\$5.N); 1847 (\$10.N); 2053 (\$30.N) - 03/19/18	2,326,950	17.75	18.75	528,957	5,073,987	101,683	821,240	1,109,203	300	450	7,088,125	377	421	1,017,710	42,654	2,060,642	106,556	3,298,651	40	54	546,955	569,704	231,612	118,734,692	4.26
3/31/2018	99,679,358	0	2,472,349	19.25	19.75	565,392	5,112,207	101,418	819,005	1,577,706	600	775	13,236,122	458	521	1,801,269	66,543	2,085,613	107,238	3,594,448	40	50	590,385	566,564	232,256	132,607,872	4.76
4/7/2018	94,700,487	2037 (\$1.N); 2038 (\$5.N); 2047 (\$20.N) - 04/02/18	2,531,649	20.5	21.5	572,972	5,314,222	105,741	845,930	1,364,381	1,025	200	2,912,015	40	45	489,021	20,670	2,151,945	114,547	3,250,710	60	74	540,670	583,668	240,820	115,739,446	4.15
4/14/2018	92,913,454	0	2,554,459	22.25	23	576,862	5,171,368	103,450	827,885	999,156	225	325	2,972,975	50	55	498,501	21,201	2,119,256	109,968	3,670,466	89	106	597,000	570,640	232,776	113,939,416	4.09
4/21/2018	91,480,306	2054 (\$2.N); 2045 (\$5.N) - 04/16/18	2,544,267	24	24.75	576,593	5,042,721	100,612	809,462	898,361	200	225	3,000,526	67	80	498,419	21,834	2,112,468	108,642	4,061,812	122	142	643,197	552,824	204,200	112,656,242	4.04
4/28/2018	89,436,552	0	2,527,306	25.75	26.75	571,217	5,065,622	97,731	796,149	1,154,601	325	450	3,256,120	96	111	527,004	22,452	2,093,575	107,072	4,252,487	158	177	661,592	542,776	200,746	111,313,001	4.00
5/5/2018	93,435,363	0	2,617,933	27.25	28	595,092	5,392,077	106,361	833,865	1,471,176	625	825	3,538,706	126	143	572,931	24,072	2,207,056	119,527	4,727,848	195	215	729,786	567,296	207,382	117,146,470	4.20
weekly change	4.5%		3.6%			4.2%	6.4%	8.8%	4.7%	27.4%			8.7%			8.7%	7.2%	5.4%	11.6%	11.2%			10.3%	4.5%	3.3%	5.2%	
SALES			SALES			SALES	SALES	SALES	SALES	SALES			SALES			SALES	SALES	SALES	SALES	SALES			SALES	SALES	SALES	SALES	% of Sales
Calendar Year to date 2018	1,619,667,023		41,649,735			9,387,347	91,752,145	1,861,810	14,806,463	20,566,424			91,709,816			13,461,492	614,355	37,675,013	2,018,889	106,770,277			15,650,620	10,161,525	4,187,253	2,081,840,386	100.0%
Fiscal Year to date 2018	2,996,797,302		79,888,361			17,592,528	174,582,481	3,485,345	28,955,361	36,677,331			145,354,167			23,626,755	1,165,098	73,449,931	3,963,369	187,511,948			27,788,878	19,836,331	8,428,239	3,829,103,424	100.0%

*Full week includes 5 days from FY17