



WEEKLY SALES SUMMARY

Unaudited

Week Ending: 05/09/2009

Texas Lottery Commission
Fiscal Year to Date Sales Comparison
Unaudited

Through the week ending 05/09/2009 (36 weeks)

Sales by Game	FY 2007 *	FY 2008 **	FY 2009	\$ Change		% Change	
				FY 2009 to FY 2007	FY 2009 to FY 2008	FY 2009 to FY 2007	FY 2009 to FY 2008
Instant	\$ 1,986,316,394	\$ 1,962,311,284	\$ 1,920,265,094	\$ -66,051,300	\$ -42,046,190	-3.3%	-2.1%
Lotto Texas	170,320,956	143,181,638	132,106,378	-38,214,578	-11,075,260	-22.4%	-7.7%
Pick 3	218,014,890	200,006,156	199,540,215	-18,474,675	-465,941	-8.5%	-0.2%
Pick 3 Sum It Up	-	4,461,261	4,198,720	4,198,720	-262,542	-	-5.9%
Cash 5	61,058,272	53,156,315	49,588,157	-11,470,115	-3,568,158	-18.8%	-6.7%
Texas Two Step	35,944,615	33,063,848	35,244,807	-699,808	2,180,959	-1.9%	6.6%
Mega Millions	128,333,816	121,034,391	137,347,321	9,013,505	16,312,930	7.0%	13.5%
Megaplier	29,759,096	28,560,129	31,002,053	1,242,957	2,441,924	4.2%	8.6%
Daily 4	-	29,465,396	31,425,329	31,425,329	1,959,933	-	6.7%
Daily 4 Sum It Up	-	6,488,776	3,800,519	3,800,519	-2,688,257	-	-41.4%
Total	\$ 2,629,748,039	\$ 2,581,729,194	\$ 2,544,518,592	\$ -85,229,447	\$ -37,210,602	-3.2%	-1.4%

* 3 extra days in 2007 ** 2 extra days in 2008

Texas Lottery Commission
Fiscal Year Over Year Change in Sales
Unaudited
FY 2009 Compared to FY 2008

Week	FY 2009 Week Ending	INSTANT TICKETS				ON-LINE GAMES				TOTAL SALES			
		FY 2009	FY 2008	Difference	% change - Cumulative Sales	FY 2009	FY 2008	Difference	% change - Cumulative Sales	FY 2009	FY 2008	Difference	% change - Cumulative Sales
1	9/6/2008**	\$44,890,104	\$62,376,229	(\$17,486,125)	-28.0%	\$14,722,011	\$19,372,224	(\$4,650,213)	-24.0%	\$59,612,115	\$81,748,453	(\$22,136,338)	-27.1%
2	9/13/2008	\$46,309,551	\$52,458,866	(\$6,149,315)	-20.6%	\$13,704,860	\$16,926,163	(\$3,221,303)	-21.7%	\$60,014,411	\$69,385,029	(\$9,370,618)	-20.8%
3	9/20/2008	\$42,923,171	\$49,998,934	(\$7,075,763)	-18.6%	\$12,291,263	\$15,792,283	(\$3,501,020)	-21.8%	\$55,214,434	\$65,791,217	(\$10,576,783)	-19.4%
4	9/27/2008	\$47,042,801	\$49,894,175	(\$2,851,374)	-15.6%	\$14,222,339	\$14,800,514	(\$578,175)	-17.9%	\$61,265,140	\$64,694,689	(\$3,429,549)	-16.2%
5	10/4/2008	\$50,747,162	\$53,486,863	(\$2,739,701)	-13.5%	\$15,784,472	\$16,618,430	(\$833,958)	-15.3%	\$66,531,634	\$70,105,293	(\$3,573,659)	-14.0%
6	10/11/2008	\$49,763,789	\$50,918,020	(\$1,154,231)	-11.7%	\$15,622,498	\$15,601,410	\$21,088	-12.9%	\$65,386,287	\$66,519,430	(\$1,133,143)	-12.0%
7	10/18/2008	\$49,299,053	\$50,532,253	(\$1,233,200)	-10.5%	\$15,167,940	\$15,682,666	(\$514,726)	-11.6%	\$64,466,993	\$66,214,919	(\$1,747,926)	-10.7%
8	10/25/2008	\$49,977,581	\$50,347,450	(\$369,869)	-9.3%	\$14,525,843	\$15,586,516	(\$1,060,673)	-11.0%	\$64,503,424	\$65,933,966	(\$1,430,542)	-9.7%
9	11/1/2008	\$50,346,542	\$53,953,733	(\$3,607,191)	-9.0%	\$14,838,845	\$16,775,983	(\$1,937,139)	-11.1%	\$65,185,387	\$70,729,716	(\$5,544,330)	-9.5%
10	11/8/2008	\$54,860,087	\$53,635,090	\$1,224,997	-7.9%	\$16,057,069	\$15,912,791	\$144,278	-9.9%	\$70,917,156	\$69,547,881	\$1,369,275	-8.3%
11	11/15/2008	\$53,484,812	\$51,254,401	\$2,230,411	-6.8%	\$15,829,819	\$15,797,076	\$32,744	-9.0%	\$69,314,631	\$67,051,477	\$2,263,155	-7.3%
12	11/22/2008	\$52,806,511	\$50,897,817	\$1,908,694	-5.9%	\$16,460,748	\$15,801,720	\$659,028	-7.9%	\$69,267,259	\$66,699,537	\$2,567,722	-6.4%
13	11/29/2008	\$52,199,741	\$53,913,115	(\$1,713,374)	-5.7%	\$17,397,576	\$17,055,505	\$342,072	-7.1%	\$69,597,317	\$70,968,620	(\$1,371,303)	-6.0%
14	12/6/2008	\$56,731,851	\$55,702,697	\$1,029,154	-5.1%	\$20,363,789	\$17,900,717	\$2,463,073	-5.5%	\$77,095,640	\$73,603,414	\$3,492,227	-5.2%
15	12/13/2008	\$54,109,617	\$53,703,516	\$406,101	-4.7%	\$22,952,228	\$17,820,841	\$5,131,387	-3.0%	\$77,061,845	\$71,524,357	\$5,537,488	-4.3%
16	12/20/2008	\$55,777,328	\$57,592,769	(\$1,815,441)	-4.6%	\$15,833,517	\$17,436,233	(\$1,602,716)	-3.4%	\$71,610,845	\$75,029,002	(\$3,418,157)	-4.3%
17	12/27/2008	\$57,597,885	\$57,696,003	(\$98,118)	-4.3%	\$15,851,771	\$14,743,680	\$1,108,091	-2.9%	\$73,449,656	\$72,439,683	\$1,009,973	-4.0%
18	1/3/2009	\$57,582,115	\$57,935,952	(\$353,837)	-4.1%	\$16,900,028	\$15,704,450	\$1,195,578	-2.3%	\$74,482,143	\$73,640,402	\$841,741	-3.7%
19	1/10/2009	\$54,250,945	\$55,360,542	(\$1,109,597)	-4.0%	\$16,203,220	\$15,691,540	\$511,680	-2.0%	\$70,454,165	\$71,052,082	(\$597,917)	-3.5%
20	1/17/2009	\$51,625,339	\$54,920,166	(\$3,294,827)	-4.1%	\$15,701,605	\$16,259,669	(\$558,064)	-2.1%	\$67,326,944	\$71,179,835	(\$3,852,891)	-3.6%
21	1/24/2009	\$52,789,573	\$54,439,890	(\$1,650,317)	-4.1%	\$15,897,473	\$16,691,724	(\$794,251)	-2.2%	\$68,687,046	\$71,131,614	(\$2,444,568)	-3.6%
22	1/31/2009	\$55,453,471	\$57,464,382	(\$2,010,911)	-4.0%	\$16,908,272	\$17,968,227	(\$1,059,955)	-2.4%	\$72,361,743	\$75,432,609	(\$3,070,866)	-3.7%
23	2/7/2009	\$62,247,711	\$60,715,019	\$1,532,692	-3.7%	\$18,354,314	\$20,097,338	(\$1,743,025)	-2.7%	\$80,602,025	\$80,812,357	(\$210,333)	-3.5%
24	2/14/2009	\$60,509,056	\$57,093,143	\$3,415,913	-3.3%	\$19,218,078	\$22,179,908	(\$2,961,831)	-3.3%	\$79,727,134	\$79,273,051	\$454,083	-3.3%
25	2/21/2009	\$59,194,623	\$57,627,047	\$1,567,576	-3.0%	\$21,098,199	\$27,230,539	(\$6,132,340)	-4.5%	\$80,292,822	\$84,857,586	(\$4,564,764)	-3.4%
26	2/28/2009	\$58,857,216	\$55,591,667	\$3,265,549	-2.7%	\$24,116,924	\$17,016,118	\$7,100,806	-2.8%	\$82,974,140	\$72,607,785	\$10,366,355	-2.7%
27	3/7/2009	\$59,552,257	\$56,837,481	\$2,714,776	-2.4%	\$23,995,136	\$16,690,193	\$7,304,943	-1.1%	\$83,547,393	\$73,527,674	\$10,019,719	-2.1%
28	3/14/2009	\$53,754,084	\$54,587,112	(\$833,028)	-2.4%	\$18,769,831	\$16,448,165	\$2,321,667	-0.6%	\$72,523,915	\$71,035,277	\$1,488,639	-1.9%
29	3/21/2009	\$52,581,107	\$53,098,937	(\$517,830)	-2.3%	\$15,903,038	\$16,639,184	(\$736,146)	-0.7%	\$68,484,145	\$69,738,121	(\$1,253,976)	-1.9%
30	3/28/2009	\$52,560,961	\$53,933,689	(\$1,372,728)	-2.3%	\$16,094,933	\$17,698,625	(\$1,603,692)	-1.0%	\$68,655,894	\$71,632,314	(\$2,976,420)	-2.0%
31	4/4/2009	\$56,249,759	\$57,598,982	(\$1,349,223)	-2.3%	\$17,357,002	\$17,665,411	(\$308,409)	-1.0%	\$73,606,761	\$75,264,393	(\$1,657,632)	-2.0%
32	4/11/2009	\$54,440,987	\$53,954,185	\$486,802	-2.2%	\$17,660,600	\$15,860,784	\$1,799,816	-0.7%	\$72,101,587	\$69,814,969	\$2,286,618	-1.9%
33	4/18/2009	\$52,755,834	\$53,946,736	(\$1,190,902)	-2.2%	\$18,469,585	\$16,452,676	\$2,016,909	-0.3%	\$71,225,419	\$70,399,412	\$826,007	-1.8%
34	4/25/2009	\$51,450,968	\$51,533,006	(\$82,038)	-2.2%	\$20,216,898	\$16,873,949	\$3,342,950	0.3%	\$71,667,866	\$68,406,955	\$3,260,912	-1.6%
35	5/2/2009	\$52,327,090	\$53,250,568	(\$923,478)	-2.2%	\$23,520,573	\$18,202,103	\$5,318,471	1.2%	\$75,847,663	\$71,452,671	\$4,394,993	-1.4%
36	5/9/2009	\$53,214,412	\$54,060,849	(\$846,437)	-2.1%	\$16,241,207	\$18,422,562	(\$2,181,355)	0.8%	\$69,455,619	\$72,483,411	(\$3,027,792)	-1.4%
37	5/16/2009		\$54,010,641				\$20,728,360				\$74,739,001		
38	5/23/2009		\$50,377,032				\$15,461,384				\$65,838,416		
39	5/30/2009		\$49,545,080				\$15,175,370				\$64,720,450		
40	6/6/2009		\$53,702,986				\$15,982,166				\$69,685,152		

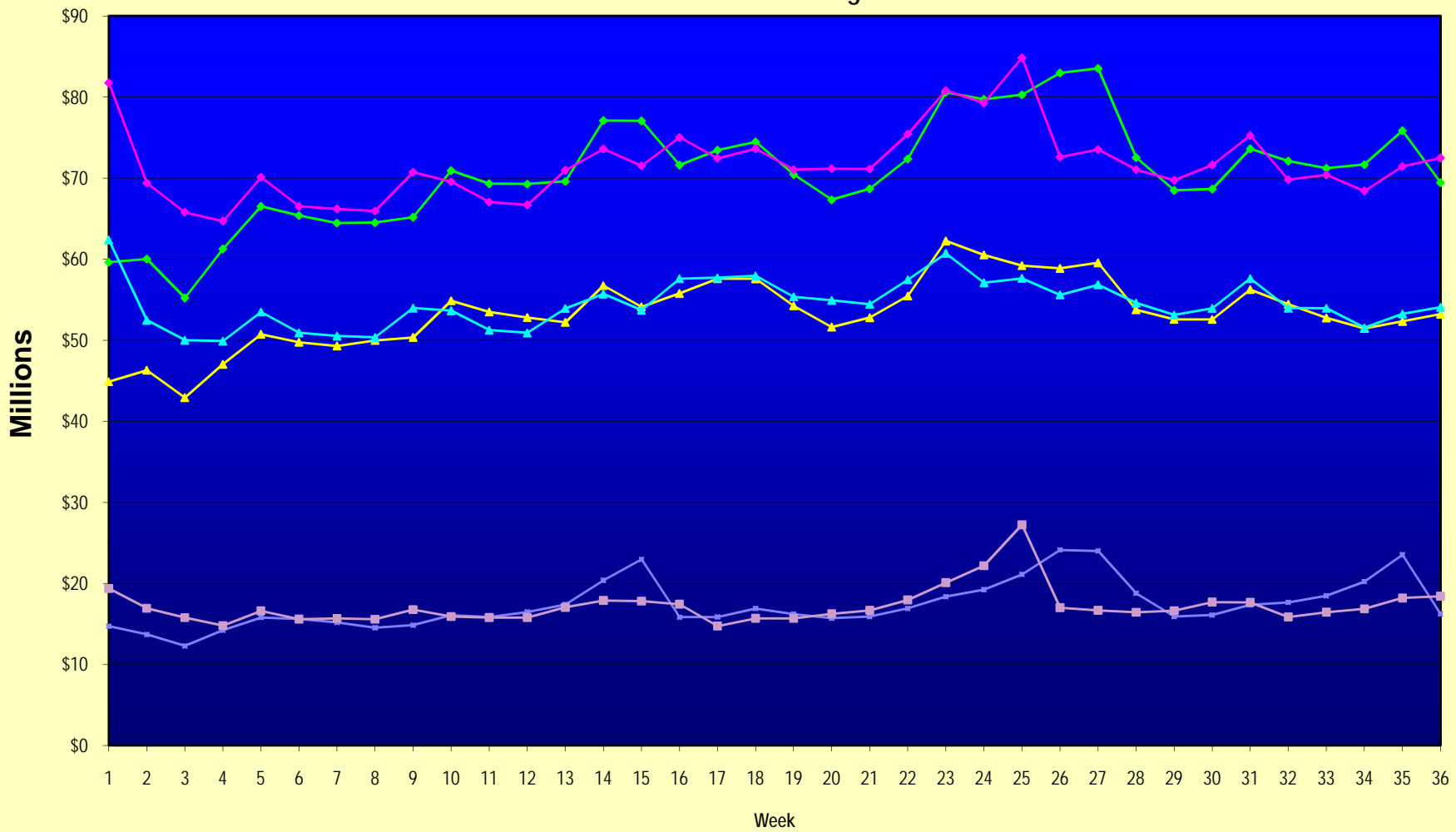
Note: Week 1 is not a full week of sales as this report is prepared on a Fiscal Year basis.

Texas Lottery Commission
Fiscal Year Over Year Change in Sales
Unaudited
FY 2009 Compared to FY 2008

Week	FY 2009 Week Ending	INSTANT TICKETS				ON-LINE GAMES				TOTAL SALES			
		FY 2009	FY 2008	Difference	% change - Cumulative Sales	FY 2009	FY 2008	Difference	% change - Cumulative Sales	FY 2009	FY 2008	Difference	% change - Cumulative Sales
41	6/13/2009		\$51,171,483				\$16,589,087				\$67,760,570		
42	6/20/2009		\$50,650,362				\$15,728,484				\$66,378,846		
43	6/27/2009		\$49,258,266				\$15,250,905				\$64,509,171		
44	7/4/2009		\$53,393,355				\$16,270,619				\$69,663,974		
45	7/11/2009		\$53,127,756				\$16,914,922				\$70,042,678		
46	7/18/2009		\$51,593,146				\$17,752,738				\$69,345,884		
47	7/25/2009		\$49,902,181				\$16,706,145				\$66,608,326		
48	8/1/2009		\$49,605,420				\$16,254,383				\$65,859,803		
49	8/8/2009		\$50,961,907				\$16,770,496				\$67,732,403		
50	8/15/2009		\$49,452,511				\$16,749,487				\$66,201,998		
51	8/22/2009		\$49,249,518				\$17,286,302				\$66,535,820		
52	8/29/2009		\$49,468,928				\$18,109,997				\$67,578,925		
53	9/5/2009		\$6,054,239				\$493,109				\$6,547,348		
Total thru Current Week		\$1,920,265,094	\$1,962,311,284	(\$42,046,190)	-2.1%	\$624,253,498	\$619,417,910	\$4,835,588	0.8%	\$2,544,518,592	\$2,581,729,194	(\$37,210,602)	-1.4%
Fiscal Year Total		\$1,920,265,094	\$2,783,836,095			\$624,253,498	\$887,641,858			\$2,544,518,592	\$3,671,477,953		

** FY 2009 includes 6 days; FY 2008 includes 8 days
FY 2009 average daily sales are \$9,242,258. Two days at average daily sales are \$18,484,516.

Texas Lottery Commission Fiscal Year Over Year Change in Sales



◆ Total Sales 2009
 ◆ Total Sales 2008
 ▲ Instant Tickets 2009
 ▲ Instant Tickets 2008
 ◆ On-Line Games 2009
 ■ On-Line Games 2008

Note: Week 1 is not a full week of sales as this report is prepared on a Fiscal Year basis.

Texas Lottery Commission
Instant Tickets by Price Point
Sales, Prize Expense, Sales Contribution and Payout Percentage With Year Over Year Changes
Unaudited

Fiscal Year	Price Point	# of Active Games	FY Sales	% of Instant Ticket Sales	Year over Year Change in Sales	FY Prize Expense	Year over Year Change in Prize Expense	FY Sales Contribution	Year over Year Change in Contribution	Average Prize Payout %	Year over Year Change in Payout %
2008	\$1.00	43	162,916,738	8.3%		98,196,652		64,720,086		60.3%	0.3%
thru	\$2.00	52	323,484,978	16.5%		210,668,753		112,816,225		65.1%	0.4%
5/10/2008	\$3.00	16	174,741,207	8.9%		114,852,008		59,889,199		65.7%	-0.1%
	\$5.00	45	543,201,870	27.7%		368,942,103		174,259,767		67.9%	-0.1%
	\$7.00	12	114,053,905	5.8%		77,567,155		36,486,750		68.0%	0.1%
	\$10.00	19	294,687,976	15.0%		206,160,532		88,527,444		70.0%	-0.8%
	\$20.00	8	142,179,640	7.2%		102,182,211		39,997,429		71.9%	-0.1%
	\$25.00	2	49,914,700	2.5%		36,241,533		13,673,167		72.6%	0.3%
	\$30.00	3	45,817,470	2.3%		33,166,041		12,651,429		72.4%	0.2%
	\$50.00	2	111,312,800	5.7%		80,310,507		31,002,293		72.1%	0.0%
Total		202	\$1,962,311,284			\$1,328,287,495		\$634,023,789		67.7%	0.3%
2009	\$1.00	41	168,333,024	8.8%		101,223,902		67,109,122		60.1%	0.1%
thru	\$2.00	38	327,455,912	17.1%		213,446,012		114,009,900		65.2%	-0.1%
5/9/2009	\$3.00	16	200,934,777	10.5%		131,870,690		69,064,087		65.6%	-0.1%
	\$5.00	43	591,283,499	30.7%		402,124,404		189,159,095		68.0%	0.1%
	\$7.00	8	99,756,167	5.1%		67,840,663		31,915,504		68.0%	0.0%
	\$10.00	18	273,117,750	14.2%		191,094,074		82,023,676		70.0%	0.0%
	\$20.00	9	164,995,060	8.7%		118,392,327		46,602,733		71.8%	0.0%
	\$25.00	1	2,372,325	0.1%		1,725,527		646,798		72.7%	0.2%
	\$30.00	3	10,024,230	0.5%		7,263,928		2,760,302		72.5%	0.1%
	\$50.00	4	81,992,350	4.2%		60,121,492		21,870,858		73.3%	1.6%
Total		181	\$1,920,265,094			\$1,295,103,019		\$625,162,075		67.4%	-0.3%
Variance	\$1.00	-2	5,416,286		3.3%	3,027,250	3.1%	2,389,036	3.7%	-0.14%	
2009 to	\$2.00	-14	3,970,934		1.2%	2,777,260	1.3%	1,193,674	1.1%	0.06%	
2008	\$3.00	0	26,193,570		15.0%	17,018,682	14.8%	9,174,888	15.3%	-0.10%	
	\$5.00	-2	48,081,629		8.9%	33,182,300	9.0%	14,899,329	8.6%	0.09%	
	\$7.00	-4	-14,297,738		-12.5%	-9,726,492	-12.5%	-4,571,246	-12.5%	0.00%	
	\$10.00	-1	-21,570,226		-7.3%	-15,066,458	-7.3%	-6,503,768	-7.3%	0.01%	
	\$20.00	1	22,815,420		16.0%	16,210,116	15.9%	6,605,304	16.5%	-0.11%	
	\$25.00	-1	-47,542,375		-95.2%	-34,516,006	-95.2%	-13,026,369	-95.3%	0.13%	
	\$30.00	0	-35,793,240		-78.1%	-25,902,113	-78.1%	-9,891,127	-78.2%	0.08%	
	\$50.00	2	-29,320,450		-26.3%	-20,189,016	-25.1%	-9,131,434	-29.5%	1.18%	
Total		-21	-\$42,046,190		-2.1%	-\$33,184,477	-2.5%	-\$8,861,713	-1.4%	-0.25%	

Texas Lottery Commission
Instant Tickets by Price Point
Sales, Prize Expense, Sales Contribution and Payout Percentage With Year Over Year Changes
 Unaudited

Notes - Instant Ticket Variances

		FY 2009		FY 2008		Difference
Sales	\$1 - \$7		\$1,387,763,379		\$1,318,398,698	\$69,364,681
Prize Exp.	\$1 - \$7		\$916,505,671		\$870,226,671	\$46,279,000
Sales Cont.	\$1 - \$7		\$471,257,708		\$448,172,027	\$23,085,681
Prize Exp. %	\$1 - \$7		66.0%		66.0%	0.0%
		FY 2009		FY 2008		Difference
Sales	\$10 - \$50		\$532,501,715		\$643,912,586	-\$111,410,871
Prize Exp.	\$10 - \$50		\$378,597,348		\$458,060,824	-\$79,463,477
Sales Cont.	\$10 - \$50		\$153,904,367		\$185,851,762	-\$31,947,394
Prize Exp. %	\$10 - \$50		71.1%		71.1%	0.0%
		FY 2009		FY 2008		Difference
Sales	Instant		\$1,920,265,094		\$1,962,311,284	-\$42,046,190
Prize Exp.	Instant		\$1,295,103,019		\$1,328,287,495	-\$33,184,477
Sales Cont.	Instant		\$625,162,075		\$634,023,789	-\$8,861,713
Prize Exp. %	Instant		67.4%		67.7%	-0.2%

		FY 2009		FY 2008		Difference
Sales	\$1 - \$10		\$1,660,881,129		\$1,613,086,674	\$47,794,455
Prize Exp.	\$1 - \$10		\$1,107,599,745		\$1,076,387,203	\$31,212,542
Sales Cont.	\$1 - \$10		\$553,281,384		\$536,699,471	\$16,581,913
Prize Exp. %	\$1 - \$10		66.7%		66.7%	0.0%
		FY 2009		FY 2008		Difference
Sales	\$20 - \$50		\$259,383,965		\$349,224,610	-\$89,840,645
Prize Exp.	\$20 - \$50		\$187,503,274		\$251,900,292	-\$64,397,018
Sales Cont.	\$20 - \$50		\$71,880,691		\$97,324,318	-\$25,443,627
Prize Exp. %	\$20 - \$50		72.3%		72.1%	0.2%
		FY 2009		FY 2008		Difference
Sales	Instant		\$1,920,265,094		\$1,962,311,284	-\$42,046,190
Prize Exp.	Instant		\$1,295,103,019		\$1,328,287,495	-\$33,184,477
Sales Cont.	Instant		\$625,162,075		\$634,023,789	-\$8,861,713
Prize Exp. %	Instant		67.4%		67.7%	-0.2%

Texas Lottery Commission
 Weekly Sales Summary
 & Comparison to Previous Week
 Unaudited

	Week Ending 05/09/2009		Week Ending 05/02/2009			
	<u>THIS WEEK</u>	% of Sales	<u>LAST WEEK</u>	% of Sales	<u>\$ change</u>	<u>% change</u>
Total Sales	<u>\$69,455,619</u>		<u>\$75,847,663</u>		<u>-\$6,392,045</u>	-8.43%
Instant Tickets	<u>\$53,214,412</u>	76.6%	<u>\$52,327,090</u>	69.0%	<u>\$887,322</u>	1.70%
Lotto Texas	\$3,554,635	5.1%	\$3,679,438	4.9%	-\$124,803	-3.39%
Pick 3	\$5,603,106	8.1%	\$5,512,771	7.3%	\$90,336	1.64%
Pick 3 Sum It Up	\$118,186	0.2%	\$113,756	0.1%	\$4,430	3.89%
Cash 5	\$1,389,454	2.0%	\$1,362,174	1.8%	\$27,280	2.00%
Texas Two Step	\$823,436	1.2%	\$880,888	1.2%	-\$57,452	-6.52%
Mega Millions	\$2,961,748	4.3%	\$9,277,686	12.2%	-\$6,315,938	-68.08%
Megaplier	\$718,169	1.0%	\$1,653,107	2.2%	-\$934,938	-56.56%
Daily 4	\$967,592	1.4%	\$937,874	1.2%	\$29,718	3.17%
Daily 4 Sum It Up	\$104,881	0.2%	\$102,880	0.1%	\$2,001	1.94%
Total Online Sales	<u>\$16,241,207</u>		<u>\$23,520,573</u>		<u>-\$7,279,367</u>	-30.95%

* Totals may not sum due to rounding.

Texas Lottery Commission
Weekly Sales Summary
Unaudited

INSTANT TICKETS
TOP TEN SELLING GAMES

For the Week Ending : 05/09/2009

Rank	Price Point	Game	Sales (Millions)
1	\$ 5	KING OF CASH	\$ 3.806
2	\$ 50	\$140,000,000 EXTREME PAYOUT	\$ 2.828
3	\$ 3	BONUS CASHWORD	\$ 2.763
4	\$ 5	SAPPHIRE BLUE 5'S	\$ 2.746
5	\$ 10	PRECIOUS JEWELS	\$ 2.741
6	\$ 7	\$75,000 CASINO	\$ 2.415
7	\$ 5	EXTREME 8'S	\$ 1.934
8	\$ 10	STACKS OF CASH	\$ 1.892
9	\$ 10	SET FOR LIFE	\$ 1.846
10	\$ 5	MONTHLY BONUS	\$ 1.678

Texas Lottery Commission
Prize Payout Tracking Report
Unaudited

Through Week Ending 05/09/2009

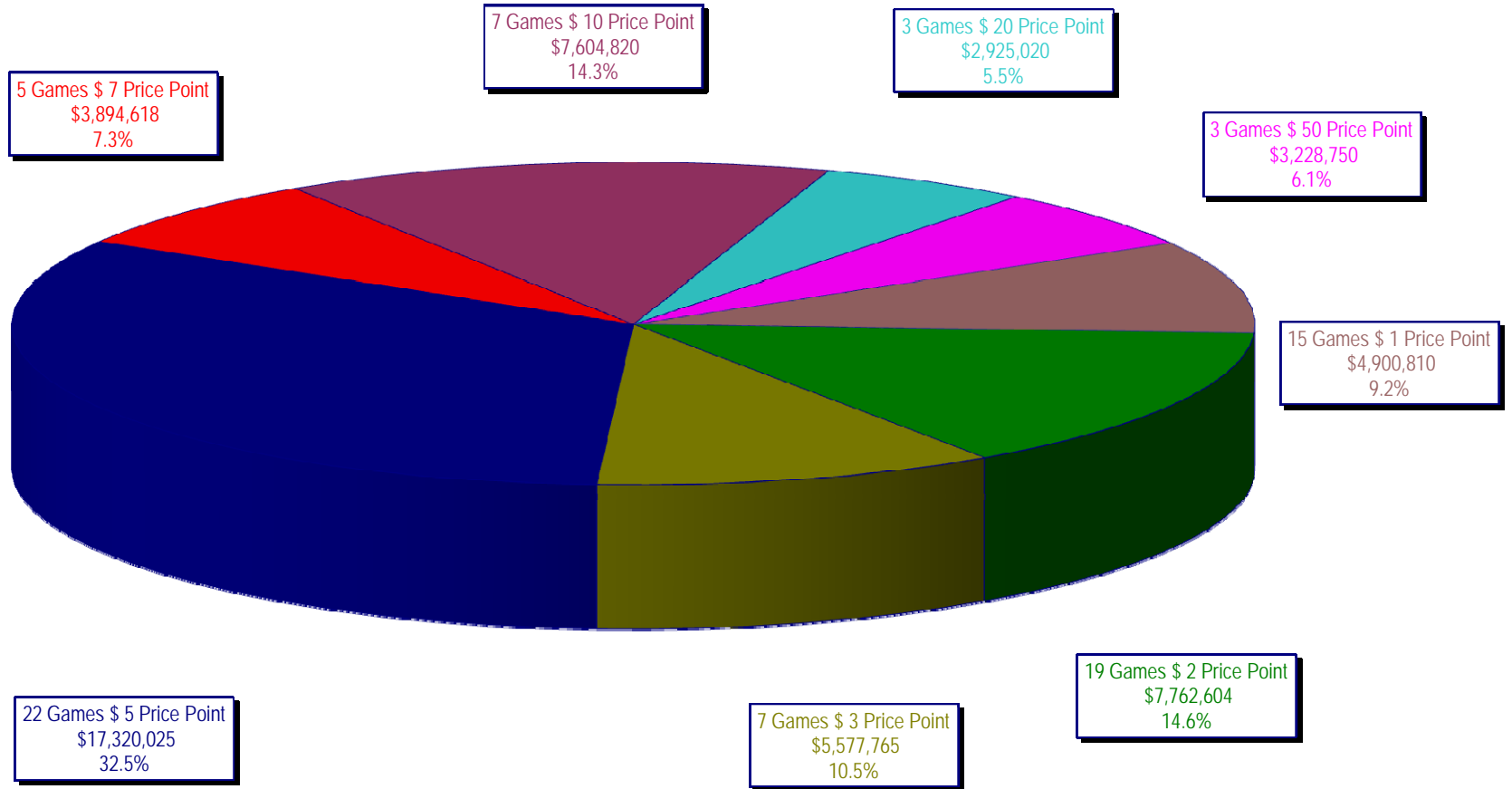
On-Line Sales

		FY Sales Through Week Ending 5/9/2009		FY Prize Expense Through Week Ending 5/9/2009	Actual* Prize Payout	Base Payout (Prize Pool)
Lotto	\$	132,106,378	\$	66,621,660	50.43%	50.00%
Pick 3		199,540,215		96,930,260	48.58%	50.00%
Pick 3 Sum It Up		4,198,720		1,901,386	45.28%	50.00%
Cash 5		49,588,157		24,898,312	50.21%	50.00%
Texas Two-Step		35,244,807		18,897,761	53.62%	50.00%
Mega Millions		137,347,321		67,689,375	49.28%	50.00%**
Megaplier		31,002,053		12,753,281	41.14%	N/A
Daily 4		31,425,329		15,647,450	49.79%	50.00%
Daily 4-Sum It Up		3,800,519		1,612,822	42.44%	50.00%
Totals	\$	624,253,498	\$	306,952,307	49.17%	

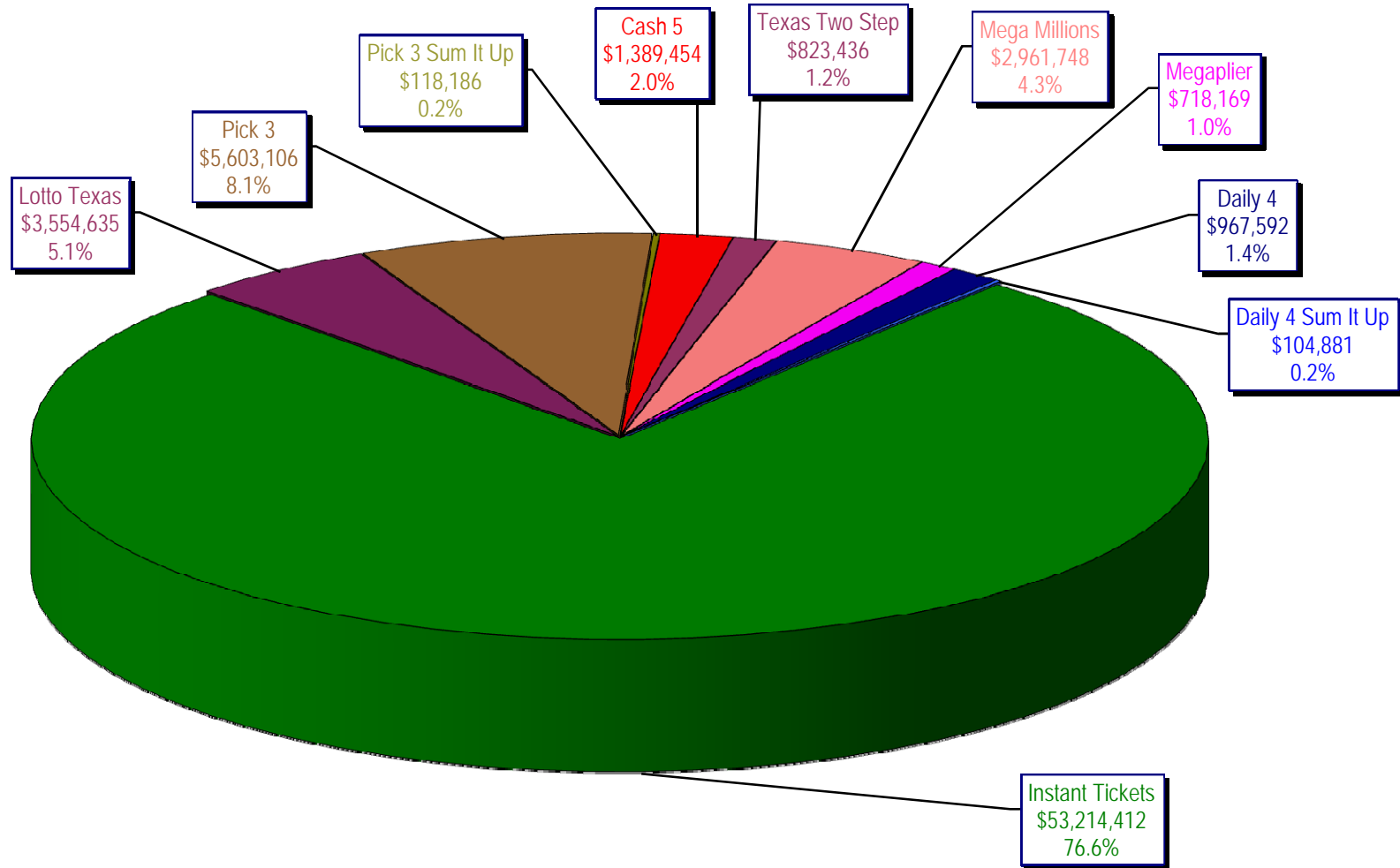
* Before Unclaimed Prizes

** Estimated; depends on # of guaranteed prizes won in Texas

Texas Lottery Commission
Instant Ticket Sales
For the Week Ending 05/09/2009
(Unaudited)



Texas Lottery Commission
All Game Sales
For the Week Ending 05/09/2009
(Unaudited)



Texas Lottery Commission - Weekly Sales Summary for FY 2009 (Unaudited)

Week Ended	Instant Games	New Games & Dates	Lotto Texas	Jackpot		Pick 3	Pick 3 Sum It Up	Cash 5	Texas Two Step	Jackpot		Mega Millions	Jackpot		Megaplier	Daily 4	Daily 4 Sum It Up	Total	Per Cap.
				W	S					M/T	TH/F		T	F					
9/6/2008	50,944,343.00	1108 (\$2,N), 1088 (\$3, N) - 9/01/08	3,378,718.00	5	6	5,436,414.00	122,123.00	1,396,622.00	890,346.00	350	450	2,445,490.00	12	16	649,090.00	786,482.50	109,834.00	66,159,462.50	2.77
9/13/2008	46,309,551.00	1109 (\$1,N), 1098 (\$5, N) - 9/08/08	3,020,089.00	7	8	4,705,585.50	105,899.00	1,279,412.00	856,199.00	600	200	2,327,214.00	24	12	617,672.00	696,633.00	96,156.50	60,014,411.00	2.51
9/20/2008	42,923,171.00	0	3,054,093.00	9	10	4,121,734.50	90,718.00	1,155,350.00	637,792.00	225	250	1,978,127.00	15	12	540,225.00	627,210.00	86,013.50	55,214,434.00	2.31
9/27/2008	47,042,801.00	1111 (\$2,N), 1099 (\$5, N) - 9/22/08	3,427,671.00	11	12	4,821,563.00	103,189.50	1,288,062.00	834,307.00	275	425	2,322,862.00	16	24	617,085.00	709,741.50	97,858.00	61,265,140.00	2.56
10/4/2008	50,747,162.00	1113 (\$1,N) 9/29/08	3,675,683.00	13	14	5,305,711.00	116,332.50	1,369,040.00	1,074,874.00	525	650	2,671,927.00	32	42	693,845.00	770,782.50	106,277.00	66,531,634.00	2.78
10/11/2008	49,763,789.00	0	3,732,365.00	15	16	5,287,094.00	114,665.50	1,370,334.00	1,305,250.00	800	975	2,306,070.00	12	16	622,120.00	778,204.00	106,395.00	65,386,286.50	2.74
10/18/2008	49,299,053.00	1117 (\$3,N), 1118 (\$20,N) - 10/13/08	3,780,438.00	17	18	5,149,258.00	109,530.00	1,355,601.00	741,849.00	200	200	2,500,644.00	23	32	652,198.00	776,366.00	102,056.00	64,466,993.00	2.70
10/25/2008	49,977,581.00	1119 (\$1,N), 1120 (\$5,N) - 10/20/08	3,210,762.00	4	5	5,099,671.00	107,104.50	1,339,079.00	789,649.00	225	275	2,456,965.00	42	12	641,206.00	778,434.00	102,972.50	64,503,424.00	2.70
11/1/2008	50,346,542.00	1121 (\$2,N), 1122 (\$10,N) - 10/27/08	3,325,641.00	6	7	5,234,124.00	109,983.00	1,339,046.00	946,035.00	375	475	2,347,596.00	16	23	626,235.00	805,572.00	104,612.50	65,185,386.50	2.73
11/8/2008	54,860,087.00	1123 (\$3,N), 1124 (\$7,N) - 11/03/08; 1103 (\$3,N) - 11/05/08; 1063 (\$3,N) - 11/07/08	3,290,417.00	4	5	5,686,701.00	118,495.00	1,397,985.00	1,158,101.00	625	750	2,729,302.50	31	42	692,662.00	871,230.00	112,175.50	70,917,156.00	2.97
11/15/2008	53,484,812.00	1125 (\$1, N), 1126 (\$5,N) - 11/10/08	3,336,934.00	6	7	5,459,984.00	112,884.00	1,366,024.00	766,955.00	200	225	3,102,251.00	51	62	749,736.00	830,957.00	104,094.00	69,314,631.00	2.90
11/22/2008	52,806,511.00	0	3,452,481.00	8	9	5,329,591.00	108,861.50	1,358,271.00	743,950.00	200	200	3,666,517.00	73	86	847,201.00	849,077.50	104,797.50	69,267,258.50	2.90
11/29/2008	52,199,741.00	1127 (\$2,N), 1128 (\$5,N) - 11/24/08	3,585,374.00	10	11	5,340,783.50	111,443.00	1,315,233.00	686,077.00	200	225	4,441,715.00	96	111	968,906.00	845,475.50	102,569.00	69,597,317.00	2.91
12/6/2008	56,731,851.00	0	3,794,991.00	12	13	5,752,593.00	121,663.50	1,416,446.00	780,328.00	250	200	6,238,355.00	128	146	1,270,214.00	881,841.50	107,357.00	77,095,640.00	3.23
12/13/2008	54,109,617.00	1129 (\$1, N) - 12/08/08	3,315,658.00	4	5	5,580,770.00	114,295.50	1,384,858.00	766,893.00	225	250	9,150,536.00	170	207	1,691,121.00	846,176.50	101,919.50	77,061,844.50	3.22
12/20/2008	55,777,328.00	1104 (\$2,N), 1105 (\$5,N), 1106 (\$10,N) - 12/15/08	3,432,340.00	6	7	5,741,120.00	116,075.50	1,401,805.00	741,945.00	200	200	2,736,234.00	12	16	687,875.00	871,579.50	104,543.00	71,610,845.00	3.00
12/27/2008	57,597,885.00	1077 (\$1,N), 1110 (\$1,N) - 12/22/08	3,582,169.00	8	4	5,628,081.50	115,323.00	1,340,590.00	708,906.00	225	250	2,842,167.00	22	29	706,042.00	828,346.00	100,146.00	73,449,655.50	3.07
1/3/2009	57,582,115.00	0	3,784,763.00	5	6	5,690,220.50	120,519.50	1,406,807.00	934,000.00	325	525	3,190,457.00	37	46	780,850.00	885,674.00	106,736.50	74,482,142.50	3.12
1/10/2009	54,250,945.00	1135 (\$2,N), 1136 (\$5,N) - 1/5/09	3,582,400.00	7	8	5,476,890.00	116,674.50	1,403,531.00	1,267,847.00	675	900	2,701,275.00	12	16	681,574.00	868,919.00	104,109.50	70,454,165.00	2.95
1/17/2009	51,625,339.00	1137 (\$1,N), 1138 (\$3,N) - 1/12/09	3,668,302.50	9	10	5,443,159.00	112,605.00	1,387,958.00	778,563.00	200	200	2,683,707.00	22	12	675,416.00	852,987.00	98,907.50	67,326,944.00	2.82
1/24/2009	52,789,573.00	1115 (\$2,N), 1116 (\$5,N) - 1/19/09	3,723,835.50	11	12	5,514,547.50	115,827.50	1,376,695.00	860,483.00	225	325	2,692,611.00	16	21	676,936.00	836,996.00	99,541.00	68,687,045.50	2.87
1/31/2009	55,453,471.00	1080 (\$1,N), 1024 (\$20,R) - 1/26/09; 1062 (\$5,N) - 1/28/09	3,837,299.00	13	14	5,700,714.50	121,794.50	1,403,756.00	1,070,879.00	450	600	3,002,883.00	30	40	731,253.00	925,937.50	113,755.50	72,361,743.00	3.03
2/7/2009	62,247,711.00	1035 (\$2,N), 1144 (\$5,N), 1058 (\$10, N) - 2/2/09	4,092,117.00	15	16	6,336,717.00	134,543.00	1,481,812.00	842,746.00	200	225	3,509,032.00	50	60	829,550.00	1,007,529.00	120,267.50	80,602,024.50	3.37
2/14/2009	60,509,056.00	1146 (\$7,N), 1089 (\$1,N) - 2/9/09	4,119,193.00	17	18	6,363,028.00	133,901.50	1,445,616.00	1,013,987.00	325	450	4,082,572.00	73	85	928,813.00	1,010,898.50	120,068.50	79,727,133.50	3.34
2/21/2009	59,194,623.00	1046 (\$2,N), 1140 (\$5,N) - 2/16/09	4,326,401.00	19	20	6,038,807.50	128,493.00	1,439,312.00	1,268,803.00	600	750	5,614,471.00	103	120	1,178,133.00	988,075.00	115,703.50	80,292,822.00	3.36
2/28/2009	58,857,216.00	1132 (\$10,N), 1149 (\$1,N) - 2/23/09	4,526,304.00	21	22	6,084,457.50	128,979.50	1,439,607.00	1,668,414.00	925	1,150	7,676,975.00	145	171	1,504,895.00	973,121.00	114,171.00	82,974,140.00	3.47

Texas Lottery Commission - Weekly Sales Summary for FY 2009 (Unaudited)

Week Ended	Instant Games	New Games & Dates	Lotto Texas	Jackpot		Pick 3	Pick 3 Sum It Up	Cash 5	Texas Two Step	Jackpot		Mega Millions	Jackpot		Megaplier	Daily 4	Daily 4 Sum It Up	Total	Per Cap.
				W	S					M/T	TH/F		T	F					
3/7/2009	59,552,257.00	0	4,928,440.00	23	25	6,133,789.00	128,599.00	1,487,185.00	1,984,358.00	1,350	1,600	6,898,457.00	212	12	1,349,427.00	971,644.50	113,236.00	83,547,392.50	3.50
3/14/2009	53,754,084.00	1139 (\$2.N), 1079 (\$5.N) - 3/09/09	4,752,592.00	26	28	5,850,166.00	120,684.50	1,418,127.00	2,112,571.00	1,900	2,150	2,782,204.00	16	26	698,214.00	925,615.00	109,657.50	72,523,915.00	3.03
3/21/2009	52,581,107.00	1107 (\$1.N), 1154 (\$3.N), 1057 (\$10.N) - 3/16/09; 1102 (\$2.N) - 3/19/09	3,437,818.00	4	5	5,776,041.50	117,294.00	1,399,720.00	880,620.00	200	225	2,595,785.00	12	16	653,517.00	934,185.00	108,057.50	68,484,145.00	2.87
3/28/2009	52,560,961.00	1130 (\$5.N), 1150 (\$10.N) - 3/23/09	3,486,731.00	6	7	5,633,454.50	114,269.50	1,381,550.00	901,673.00	300	200	2,845,499.00	24	34	701,971.00	925,093.50	104,691.50	68,655,894.00	2.87
4/4/2009	56,249,759.00	1151 (\$2.N), 1101 (\$50.N) - 3/30/09	3,746,083.00	8	9	5,893,043.50	122,332.00	1,429,598.00	940,614.00	225	300	3,321,274.00	43	54	794,282.00	998,042.00	111,733.50	73,606,761.00	3.08
4/11/2009	54,440,987.00	1153 (\$2.N) - 4/07/09; 1152 (\$3.N) - 4/08/09	3,594,176.00	10	4	5,893,551.00	120,491.50	1,394,879.00	933,807.00	425	200	3,772,700.00	65	78	857,890.00	987,127.50	105,977.50	72,101,586.50	3.02
4/18/2009	52,755,834.00	1145 (\$1.N), 1148 (\$5.N) - 4/13/09	3,462,217.00	5	6	5,627,572.00	117,123.50	1,374,682.00	829,493.00	225	200	4,960,982.00	92	109	1,040,136.00	957,161.00	100,218.50	71,225,419.00	2.98
4/25/2009	51,450,968.00	1051 (\$7.N) - 4/20/09	3,517,624.00	7	8	5,408,672.50	117,314.50	1,347,754.00	876,206.00	225	300	6,614,120.95	130	155	1,298,021.00	937,777.00	99,408.50	71,667,866.45	3.00
5/2/2009	52,327,090.00	1161 (\$1.N), 1081 (\$5.N) - 4/27/09	3,679,438.00	9	10	5,512,770.50	113,755.50	1,362,174.00	880,888.00	425	200	9,277,686.00	181	225	1,653,107.00	937,874.00	102,880.00	75,847,663.00	3.17
5/9/2009	53,214,412.00	0	3,554,635.00	11	4	5,603,106.00	118,185.50	1,389,454.00	823,436.00	225	200	2,961,748.00	12	17	718,169.00	967,592.00	104,881.00	69,455,618.50	2.91
weekly change	1.70%		-3.39%			1.64%	3.89%	2.00%	-6.52%			-68.08%			-56.56%	3.17%	1.94%	-8.43%	
	SALES		SALES			SALES	SALES	SALES	SALES			SALES			SALES	SALES	SALES	SALES	% of Sales
Startup to date	35,400,851,096.00		10,411,203,425.00			3,498,259,167.50	10,684,549.50	2,168,744,167.00	461,510,525.00			1,063,485,916.45			249,210,087.00	73,642,300.00	12,139,322.00	53,557,864,527.45	100.0%
Calendar Year to date	1,018,947,421.00		71,834,133.00			107,099,668.50	175,670.50	26,005,713.00	20,351,388.00			79,529,012.95			17,342,272.00	17,434,641.50	1,998,514.50	1,360,718,434.95	100.0%
Fiscal Year to date 2009	1,920,265,094.00		132,106,378.00			199,540,215.00	4,198,719.50	49,588,157.00	35,244,807.00			137,347,321.45			31,002,053.00	31,425,328.50	3,800,518.50	2,544,518,591.95	100.0%