



*WEEKLY SALES SUMMARY*

Unaudited

**Week Ending: 5/14/2016**

Texas Lottery Commission  
Fiscal Year to Date Sales Comparison  
Unaudited

Through the Week Ending 5/14/2016 (37 Weeks)

Sales by Game	FY 2014 *	FY 2015 **	FY 2016	\$ Change		% Change	
				FY 2016 to FY 2014	FY 2016 to FY 2015	FY 2016 to FY 2014	FY 2016 to FY 2015
Scratch Tickets	\$ 2,370,707,810	\$ 2,481,245,263	\$ 2,637,195,161	\$ 266,487,351	\$ 155,949,898	11.2%	6.3%
Lotto Texas	98,623,714	86,888,650	87,886,806	-10,736,908	998,156	-10.9%	1.1%
Lotto Extra	13,315,394	13,523,454	15,387,708	2,072,314	1,864,254	15.6%	13.8%
Pick 3	181,390,761	180,728,138	181,705,122	314,362	976,984	0.2%	0.5%
Pick 3 Sum It Up	3,569,134	3,667,919	3,727,111	157,977	59,193	4.4%	1.6%
Cash Five	37,790,949	35,901,102	32,976,944	-4,814,005	-2,924,158	-12.7%	-8.1%
Texas Two Step	39,137,723	38,758,506	39,302,024	164,301	543,518	0.4%	1.4%
Mega Millions	150,597,381	108,453,682	89,418,222	-61,179,159	-19,035,460	-40.6%	-17.6%
Megaplier	32,190,586	25,328,987	22,801,758	-9,388,828	-2,527,229	-29.2%	-10.0%
Daily 4	59,623,768	62,007,048	64,098,686	4,474,918	2,091,638	7.5%	3.4%
Daily 4 Sum It Up	3,684,187	3,619,059	3,401,246	-282,941	-217,813	-7.7%	-6.0%
Powerball	151,290,152	158,485,596	373,926,639	222,636,487	215,441,043	147.2%	135.9%
Power Play	18,199,498	19,694,264	41,692,185	23,492,687	21,997,921	129.1%	111.7%
All or Nothing	34,316,351	27,582,904	22,061,420	-12,254,931	-5,521,484	-35.7%	-20.0%
Monopoly	- <sup>1</sup>	2,656,370	-	-	-2,656,370	-	-100.0%
Texas Triple Chance	-	-	18,141,520	18,141,520	18,141,520	-	-
<b>Total</b>	<b>\$ 3,194,437,407</b>	<b>\$ 3,248,540,941</b>	<b>\$ 3,633,722,552</b>	<b>\$ 439,285,145</b>	<b>\$ 385,181,611</b>	<b>13.8%</b>	<b>11.9%</b>

\* 2 extra days

\*\* 1 extra day

<sup>1</sup> Monopoly sales were suspended after draw on 12/12/14

Texas Lottery Commission  
Fiscal Year to Date Cumulative Average Sales Comparison  
Unaudited

Through the Week Ending 5/14/2016 (37 Weeks)

Sales by Game	FY 2014	FY 2015	FY 2016
Scratch Tickets	\$ 9,153,312	\$ 9,617,230	\$ 10,261,460
Lotto Texas	380,787	336,778	341,972
Lotto Extra	51,411	52,416	59,874
Pick 3	700,350	700,497	707,024
Pick 3 Sum It Up	13,780	14,217	14,502
Cash Five	145,911	139,152	128,315
Texas Two Step	151,111	150,227	152,926
Mega Millions	581,457	420,363	347,931
Megaplier	124,288	98,174	88,723
Daily 4	230,208	240,337	249,411
Daily 4 Sum It Up	14,225	14,027	13,234
Powerball	584,132	614,285	1,454,967
Power Play	70,268	76,334	162,226
All or Nothing	132,496	106,910	85,842
Monopoly	- **	48,298	-
Texas Triple Chance	- *	-	78,535
<b>Total</b>	<b>\$ <u>12,333,735</u></b>	<b>\$ <u>12,629,246</u></b>	<b>\$ <u>14,146,943</u></b>

thru 5/17/2014  
259 days

\*\*

thru 5/16/2015  
258 days  
55 days

\*

thru 5/14/2016  
257 days  
231 days

Texas Lottery Commission  
Fiscal Year Over Year Change in Sales  
Unaudited  
FY 2016 Compared to FY 2015

			SCRATCH TICKETS				DRAW GAMES				TOTAL SALES			
FY 2016			% change -				% change -				% change -			
Week	Week	Ending	FY 2016	FY 2015	Difference	Cumulative Sales	FY 2016	FY 2015	Difference	Cumulative Sales	FY 2016	FY 2015	Difference	Cumulative Sales
1	9/5/2015 *		\$49,534,249	\$54,911,801	(\$5,377,552)	-9.8%	\$17,091,724	\$17,482,488	(\$390,765)	-2.2%	\$66,625,973	\$72,394,289	(\$5,768,317)	-8.0%
2	9/12/2015		\$61,566,291	\$61,436,533	\$129,758	0.2%	\$20,630,922	\$19,097,081	\$1,533,841	8.0%	\$82,197,213	\$80,533,614	\$1,663,599	2.1%
3	9/19/2015		\$63,530,657	\$60,959,234	\$2,571,423	4.2%	\$20,327,253	\$20,567,894	(\$240,641)	-1.2%	\$83,857,910	\$81,527,128	\$2,330,782	2.9%
4	9/26/2015		\$61,731,400	\$59,710,056	\$2,021,344	3.4%	\$22,252,290	\$19,920,828	\$2,331,462	11.7%	\$83,983,690	\$79,630,884	\$4,352,806	5.5%
5	10/3/2015		\$67,048,415	\$62,119,854	\$4,928,561	7.9%	\$25,436,791	\$18,531,421	\$6,905,370	37.3%	\$92,485,206	\$80,651,275	\$11,833,931	14.7%
6	10/10/2015		\$66,049,706	\$61,253,665	\$4,796,041	7.8%	\$18,138,977	\$18,985,332	(\$846,355)	-4.5%	\$84,188,683	\$80,238,997	\$3,949,687	4.9%
7	10/17/2015		\$65,073,593	\$60,230,048	\$4,843,545	8.0%	\$17,776,414	\$19,538,402	(\$1,761,988)	-9.0%	\$82,850,007	\$79,768,450	\$3,081,558	3.9%
8	10/24/2015		\$64,087,437	\$62,384,112	\$1,703,325	2.7%	\$18,450,464	\$21,475,643	(\$3,025,179)	-14.1%	\$82,537,901	\$83,859,755	(\$1,321,854)	-1.6%
9	10/31/2015		\$66,025,374	\$63,404,713	\$2,620,661	4.1%	\$19,568,150	\$23,568,817	(\$4,000,668)	-17.0%	\$85,593,524	\$86,973,530	(\$1,380,007)	-1.6%
10	11/7/2015		\$68,137,192	\$65,486,719	\$2,650,473	4.0%	\$20,398,351	\$23,749,032	(\$3,350,681)	-14.1%	\$88,535,543	\$89,235,751	(\$700,208)	-0.8%
11	11/14/2015		\$65,449,428	\$61,745,521	\$3,703,907	6.0%	\$20,169,382	\$17,449,604	\$2,719,779	15.6%	\$85,618,810	\$79,195,125	\$6,423,686	8.1%
12	11/21/2015		\$68,364,421	\$66,353,583	\$2,010,838	3.0%	\$17,174,606	\$17,108,084	\$66,522	0.4%	\$85,539,027	\$83,461,667	\$2,077,360	2.5%
13	11/28/2015		\$61,091,628	\$60,471,184	\$620,444	1.0%	\$17,168,993	\$17,303,129	(\$134,136)	-0.8%	\$78,260,621	\$77,774,313	\$486,309	0.6%
14	12/5/2015		\$67,830,827	\$66,648,696	\$1,182,131	1.8%	\$19,252,418	\$18,862,425	\$389,994	2.1%	\$87,083,245	\$85,511,121	\$1,572,125	1.8%
15	12/12/2015		\$68,324,452	\$65,708,630	\$2,615,822	4.0%	\$19,529,408	\$18,649,598	\$879,811	4.7%	\$87,853,860	\$84,358,228	\$3,495,633	4.1%
16	12/19/2015		\$71,041,258	\$68,551,298	\$2,489,960	3.6%	\$20,824,840	\$19,051,100	\$1,773,740	9.3%	\$91,866,098	\$87,602,398	\$4,263,700	4.9%
17	12/26/2015		\$78,125,965	\$73,858,618	\$4,267,347	5.8%	\$22,586,417	\$20,006,357	\$2,580,061	12.9%	\$100,712,382	\$93,864,975	\$6,847,408	7.3%
18	1/2/2016		\$76,712,975	\$67,733,268	\$8,979,707	13.3%	\$27,972,880	\$21,355,167	\$6,617,714	31.0%	\$104,685,855	\$89,088,435	\$15,597,421	17.5%
19	1/9/2016		\$77,136,541	\$64,745,641	\$12,390,900	19.1%	\$127,289,478	\$22,265,347	\$105,024,131	471.7%	\$204,426,019	\$87,010,988	\$117,415,031	134.9%
20	1/16/2016		\$73,858,865	\$64,015,166	\$9,843,699	15.4%	\$140,104,126	\$23,694,617	\$116,409,509	491.3%	\$213,962,991	\$87,709,783	\$126,253,208	143.9%
21	1/23/2016		\$70,665,700	\$62,569,156	\$8,096,544	12.9%	\$20,781,745	\$19,765,442	\$1,016,303	5.1%	\$91,447,445	\$82,334,598	\$9,112,847	11.1%
22	1/30/2016		\$71,051,685	\$68,001,588	\$3,050,097	4.5%	\$20,433,401	\$22,877,000	(\$2,443,600)	-10.7%	\$91,485,086	\$90,878,588	\$606,498	0.7%
23	2/6/2016		\$78,458,428	\$75,677,650	\$2,780,778	3.7%	\$21,274,800	\$31,662,209	(\$10,387,409)	-32.8%	\$99,733,228	\$107,339,859	(\$7,606,631)	-7.1%
24	2/13/2016		\$80,754,850	\$75,368,712	\$5,386,138	7.1%	\$21,391,919	\$46,091,747	(\$24,699,828)	-53.6%	\$102,146,769	\$121,460,459	(\$19,313,690)	-15.9%
25	2/20/2016		\$80,078,271	\$74,833,076	\$5,245,195	7.0%	\$21,911,382	\$19,865,172	\$2,046,211	10.3%	\$101,989,653	\$94,698,248	\$7,291,406	7.7%
26	2/27/2016		\$78,832,217	\$69,918,013	\$8,914,204	12.7%	\$22,823,086	\$19,735,352	\$3,087,734	15.6%	\$101,655,303	\$89,653,365	\$12,001,938	13.4%
27	3/5/2016		\$80,019,524	\$74,848,961	\$5,170,563	6.9%	\$23,146,906	\$19,946,068	\$3,200,838	16.0%	\$103,166,430	\$94,795,029	\$8,371,401	8.8%
28	3/12/2016		\$78,524,214	\$70,079,409	\$8,444,805	12.1%	\$19,311,625	\$20,044,562	(\$732,937)	-3.7%	\$97,835,839	\$90,123,971	\$7,711,868	8.6%
29	3/19/2016		\$75,446,960	\$70,368,686	\$5,078,274	7.2%	\$18,001,000	\$18,480,795	(\$479,795)	-2.6%	\$93,447,960	\$88,849,481	\$4,598,479	5.2%
30	3/26/2016		\$75,293,759	\$70,280,600	\$5,013,159	7.1%	\$18,553,964	\$17,595,205	\$958,760	5.4%	\$93,847,723	\$87,875,805	\$5,971,919	6.8%
31	4/2/2016		\$79,316,221	\$74,369,952	\$4,946,269	6.7%	\$19,482,563	\$18,378,917	\$1,103,646	6.0%	\$98,798,784	\$92,748,869	\$6,049,915	6.5%
32	4/9/2016		\$74,560,898	\$67,416,817	\$7,144,081	10.6%	\$20,100,629	\$18,594,844	\$1,505,785	8.1%	\$94,661,527	\$86,011,661	\$8,649,866	10.1%
33	4/16/2016		\$74,056,586	\$68,393,316	\$5,663,270	8.3%	\$20,677,413	\$18,104,632	\$2,572,781	14.2%	\$94,733,999	\$86,497,948	\$8,236,051	9.5%
34	4/23/2016		\$73,110,080	\$70,078,182	\$3,031,898	4.3%	\$20,313,339	\$17,957,150	\$2,356,189	13.1%	\$93,423,419	\$88,035,332	\$5,388,087	6.1%
35	4/30/2016		\$73,448,019	\$71,744,718	\$1,703,301	2.4%	\$22,666,626	\$18,961,113	\$3,705,513	19.5%	\$96,114,645	\$90,705,831	\$5,408,814	6.0%
36	5/7/2016		\$77,593,399	\$73,415,978	\$4,177,421	5.7%	\$33,262,968	\$20,210,341	\$13,052,628	64.6%	\$110,856,367	\$93,626,319	\$17,230,049	18.4%
37	5/14/2016		\$75,263,676	\$72,152,109	\$3,111,567	4.3%	\$20,250,149	\$20,362,774	(\$112,626)	-0.6%	\$95,513,825	\$92,514,883	\$2,998,942	3.2%
38	5/21/2016			\$70,399,950				\$21,246,276				\$91,646,226		
39	5/28/2016			\$68,547,554				\$22,227,946				\$90,775,500		
40	6/4/2016			\$71,254,006				\$20,739,703				\$91,993,709		
41	6/11/2016			\$65,878,375				\$17,216,403				\$83,094,778		
42	6/18/2016			\$66,658,742				\$17,340,531				\$83,999,273		

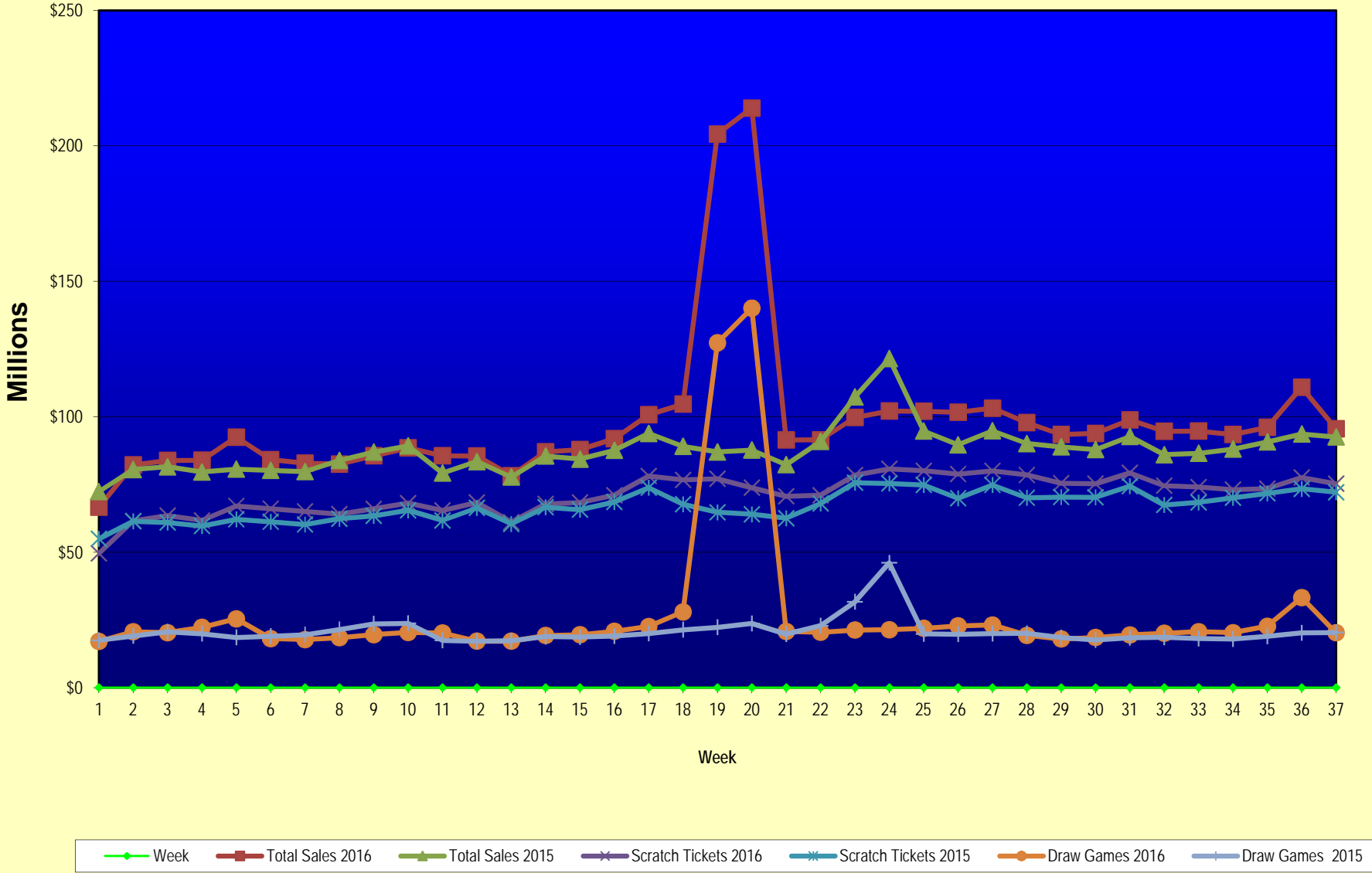
Texas Lottery Commission  
Fiscal Year Over Year Change in Sales  
Unaudited  
FY 2016 Compared to FY 2015

			SCRATCH TICKETS				DRAW GAMES				TOTAL SALES			
FY 2016			FY 2016	FY 2015	Difference	% change - Cumulative Sales	FY 2016	FY 2015	Difference	% change - Cumulative Sales	FY 2016	FY 2015	Difference	% change - Cumulative Sales
Week	Week	Ending												
43	6/25/2016			\$65,282,276				\$16,873,368				\$82,155,644		
44	7/2/2016			\$67,757,752				\$18,007,540				\$85,765,292		
45	7/9/2016			\$64,718,254				\$18,203,985				\$82,922,239		
46	7/16/2016			\$64,957,977				\$18,792,785				\$83,750,762		
47	7/23/2016			\$62,541,241				\$18,229,965				\$80,771,206		
48	7/30/2016			\$66,468,460				\$17,742,489				\$84,210,949		
49	8/6/2016			\$62,412,598				\$17,331,374				\$79,743,972		
50	8/13/2016			\$62,089,389				\$17,501,599				\$79,590,988		
51	8/20/2016			\$62,437,148				\$17,779,458				\$80,216,606		
52	8/27/2016			\$61,403,206				\$18,529,560				\$79,932,766		
	8/31/2016 **			\$17,309,621				\$3,279,958				\$20,589,579		
Total thru Current Week			\$2,637,195,161	\$2,481,245,263	\$155,949,898	6.3%	\$996,527,391	\$767,295,678	\$229,231,713	29.9%	\$3,633,722,552	\$3,248,540,941	\$385,181,611	11.9%
Fiscal Year Total			\$2,637,195,161	\$3,481,361,812			\$996,527,391	\$1,048,338,613			\$3,633,722,552	\$4,529,700,425		

\* FY 16 includes 5 days; FY 15 includes 6 days

\*\* FY 16 includes 4 days; FY 15 includes 2 days

### Texas Lottery Commission Fiscal Year Over Year Change in Sales



Note: Week 1 is not a full week of sales as this report is prepared on a Fiscal Year basis.

Texas Lottery Commission  
Scratch Tickets by Price Point  
Sales, Prize Expense, Sales Contribution and Payout Percentage With Year Over Year Changes  
Unaudited

Fiscal Year	Price Point	# of Active Games	FY Sales	% of Scratch Ticket Sales	Year over Year Change in Sales	FY Prize Expense	Year over Year Change in Prize Expense	FY Sales Contribution	Year over Year Change in Contribution	Average Prize Payout %	Year over Year Change in Payout %
2015	\$1.00	22	123,046,004	5.0%		74,667,398		48,378,606		60.7%	1.3%
Through	\$2.00	32	254,658,910	10.3%		167,374,123		87,284,787		65.7%	1.4%
5/16/2015	\$3.00	14	256,721,079	10.3%		169,260,986		87,460,093		65.9%	0.5%
	\$5.00	46	769,035,060	31.0%		522,461,593		246,573,467		67.9%	0.0%
	\$10.00	17	514,652,640	20.7%		361,912,182		152,740,458		70.3%	0.0%
	\$20.00	10	445,079,320	17.9%		333,701,100		111,378,220		75.0%	0.1%
	\$50.00	4	118,052,250	4.8%		91,758,252		26,293,998		77.7%	0.1%
<b>Total</b>		<b>145</b>	<b>\$2,481,245,263</b>			<b>\$1,721,135,636</b>		<b>\$760,109,627</b>		<b>69.4%</b>	<b>0.7%</b>
2016	\$1.00	19	117,260,776	4.4%		70,698,496		46,562,280		60.3%	-0.4%
thru	\$2.00	32	264,653,564	10.0%		172,581,527		92,072,037		65.2%	-0.4%
5/14/2016	\$3.00	12	197,030,091	7.5%		129,777,021		67,253,070		65.9%	-0.1%
	\$5.00	54	868,362,040	32.9%		589,969,663		278,392,377		67.9%	0.0%
	\$10.00	18	525,204,900	19.9%		368,155,582		157,049,318		70.1%	-0.2%
	\$20.00	12	534,163,740	20.3%		400,322,722		133,841,018		74.9%	0.0%
	\$50.00	4	130,520,050	4.9%		101,519,519		29,000,531		77.8%	0.0%
<b>Total</b>		<b>151</b>	<b>\$2,637,195,161</b>			<b>\$1,833,024,530</b>		<b>\$804,170,631</b>		<b>69.5%</b>	<b>0.1%</b>
Variance	\$1.00	-3	-5,785,228		-4.7%	-3,968,902	-5.3%	-1,816,326	-3.8%	-0.39%	
2016 to	\$2.00	0	9,994,654		3.9%	5,207,403	3.1%	4,787,251	5.5%	-0.51%	
2015	\$3.00	-2	-59,690,988		-23.3%	-39,483,965	-23.3%	-20,207,023	-23.1%	-0.07%	
	\$5.00	8	99,326,980		12.9%	67,508,070	12.9%	31,818,910	12.9%	0.00%	
	\$10.00	1	10,552,260		2.1%	6,243,399	1.7%	4,308,861	2.8%	-0.22%	
	\$20.00	2	89,084,420		20.0%	66,621,622	20.0%	22,462,798	20.2%	-0.03%	
	\$50.00	0	12,467,800		10.6%	9,761,267	10.6%	2,706,533	10.3%	0.05%	
<b>Total</b>		<b>6</b>	<b>\$155,949,898</b>		<b>6.3%</b>	<b>\$111,888,894</b>	<b>6.5%</b>	<b>\$44,061,004</b>	<b>5.8%</b>	<b>0.14%</b>	

Notes - Scratch Ticket Variances

Texas Lottery Commission  
Scratch Tickets by Price Point  
Sales, Prize Expense, Sales Contribution and Payout Percentage With Year Over Year Changes  
Unaudited

			FY 2016		FY 2015	Difference
Sales	\$1 - \$5		\$1,447,306,471		\$1,403,461,053	\$43,845,418
Prize Exp.	\$1 - \$5		\$963,026,707		\$933,764,101	\$29,262,606
Sales Cont.	\$1 - \$5		\$484,279,764		\$469,696,952	\$14,582,812
Prize Exp. %	\$1 - \$5		66.5%		66.5%	0.0%
			FY 2016		FY 2015	Difference
Sales	\$10 - \$50		\$1,189,888,690		\$1,077,784,210	\$112,104,480
Prize Exp.	\$10 - \$50		\$869,997,823		\$787,371,535	\$82,626,288
Sales Cont.	\$10 - \$50		\$319,890,867		\$290,412,675	\$29,478,192
Prize Exp. %	\$10 - \$50		73.1%		73.1%	0.1%
			FY 2016		FY 2015	Difference
Sales	Scratch		\$2,637,195,161		\$2,481,245,263	\$155,949,898
Prize Exp.	Scratch		\$1,833,024,530		\$1,721,135,636	\$111,888,894
Sales Cont.	Scratch		\$804,170,631		\$760,109,627	\$44,061,004
Prize Exp. %	Scratch		69.5%		69.4%	0.1%

			FY 2016		FY 2015	Difference
Sales	\$1 - \$10		\$1,972,511,371		\$1,918,113,693	\$54,397,678
Prize Exp.	\$1 - \$10		\$1,331,182,289		\$1,295,676,283	\$35,506,005
Sales Cont.	\$1 - \$10		\$641,329,082		\$622,437,410	\$18,891,673
Prize Exp. %	\$1 - \$10		67.5%		67.5%	-0.1%
			FY 2016		FY 2015	Difference
Sales	\$20 - \$50		\$664,683,790		\$563,131,570	\$101,552,220
Prize Exp.	\$20 - \$50		\$501,842,242		\$425,459,353	\$76,382,889
Sales Cont.	\$20 - \$50		\$162,841,548		\$137,672,217	\$25,169,331
Prize Exp. %	\$20 - \$50		75.5%		75.6%	-0.1%
			FY 2016		FY 2015	Difference
Sales	Scratch		\$2,637,195,161		\$2,481,245,263	\$155,949,898
Prize Exp.	Scratch		\$1,833,024,530		\$1,721,135,636	\$111,888,894
Sales Cont.	Scratch		\$804,170,631		\$760,109,627	\$44,061,004
Prize Exp. %	Scratch		69.5%		69.4%	0.1%



Texas Lottery Commission  
**Weekly Sales Summary**  
**& Comparison to Previous Week**  
 Unaudited

	Week Ending 5/14/2016	% of Sales	Week Ending 5/07/2016	% of Sales	\$ change	% change
	<u>THIS WEEK</u>		<u>LAST WEEK</u>			
Total Sales	<u>\$95,513,825</u>		<u>\$110,856,367</u>		<u>-\$15,342,543</u>	-13.84%
Scratch Tickets	<u>\$75,263,676</u>	78.8%	<u>\$77,593,399</u>	70.0%	<u>-\$2,329,723</u>	-3.00%
Lotto	\$2,099,014	2.2%	\$2,293,077	2.1%	-\$194,063	-8.46%
Lotto Extra	\$393,023	0.4%	\$436,015	0.4%	-\$42,992	-9.86%
Pick 3	\$5,131,497	5.4%	\$5,127,841	4.6%	\$3,656	0.07%
Pick 3 Sum It Up	\$107,835	0.1%	\$106,834	0.1%	\$1,001	0.94%
Cash Five	\$865,414	0.9%	\$884,249	0.8%	-\$18,835	-2.13%
Texas Two Step	\$1,767,748	1.9%	\$1,417,685	1.3%	\$350,063	24.69%
Mega Millions	\$2,918,731	3.1%	\$2,919,675	2.6%	-\$944	-0.03%
Megaplier	\$739,880	0.8%	\$750,519	0.7%	-\$10,639	-1.42%
Daily 4	\$1,837,825	1.9%	\$1,816,986	1.6%	\$20,839	1.15%
Daily 4 Sum It Up	\$105,856	0.1%	\$99,541	0.1%	\$6,315	6.34%
Powerball	\$2,878,645	3.0%	\$14,697,176	13.3%	-\$11,818,531	-80.41%
Power Play	\$438,710	0.5%	\$1,723,048	1.6%	-\$1,284,338	-74.54%
All or Nothing	\$560,384	0.6%	\$570,772	0.5%	-\$10,388	-1.82%
Texas Triple Chance	\$405,588	0.4%	\$419,550	0.4%	-\$13,962	-3.33%
Total Draw Game Sales	<u>\$20,250,149</u>		<u>\$33,262,968</u>		<u>-\$13,012,820</u>	-39.12%

\* Totals may not sum due to rounding.

Texas Lottery Commission  
Weekly Sales Summary  
Unaudited

SCRATCH TICKETS  
TOP TEN SELLING GAMES

For the week ending: 5/14/2016

Rank	Price Point	Game	Sales (Millions)
1	\$ 20	100X THE CASH	\$ 4.905
2	\$ 10	\$250,000 CASH CRAZE	\$ 4.641
3	\$ 5	TEXAS WILD 7'S	\$ 4.281
4	\$ 10	THE BIG MONEY SUPER TICKET	\$ 4.133
5	\$ 5	SUPER LOTERIA	\$ 3.837
6	\$ 10	CASHWORD MULTIPLIER	\$ 3.488
7	\$ 20	HIT \$1,000,000	\$ 3.357
8	\$ 50	HIGH ROLLER CASINO ACTION	\$ 3.180
9	\$ 10	HIT \$500,000	\$ 2.646
10	\$ 3	BONUS CASHWORD	\$ 2.594

Texas Lottery Commission  
Prize Payout Tracking Report  
Unaudited

Through the week ending: 5/14/2016

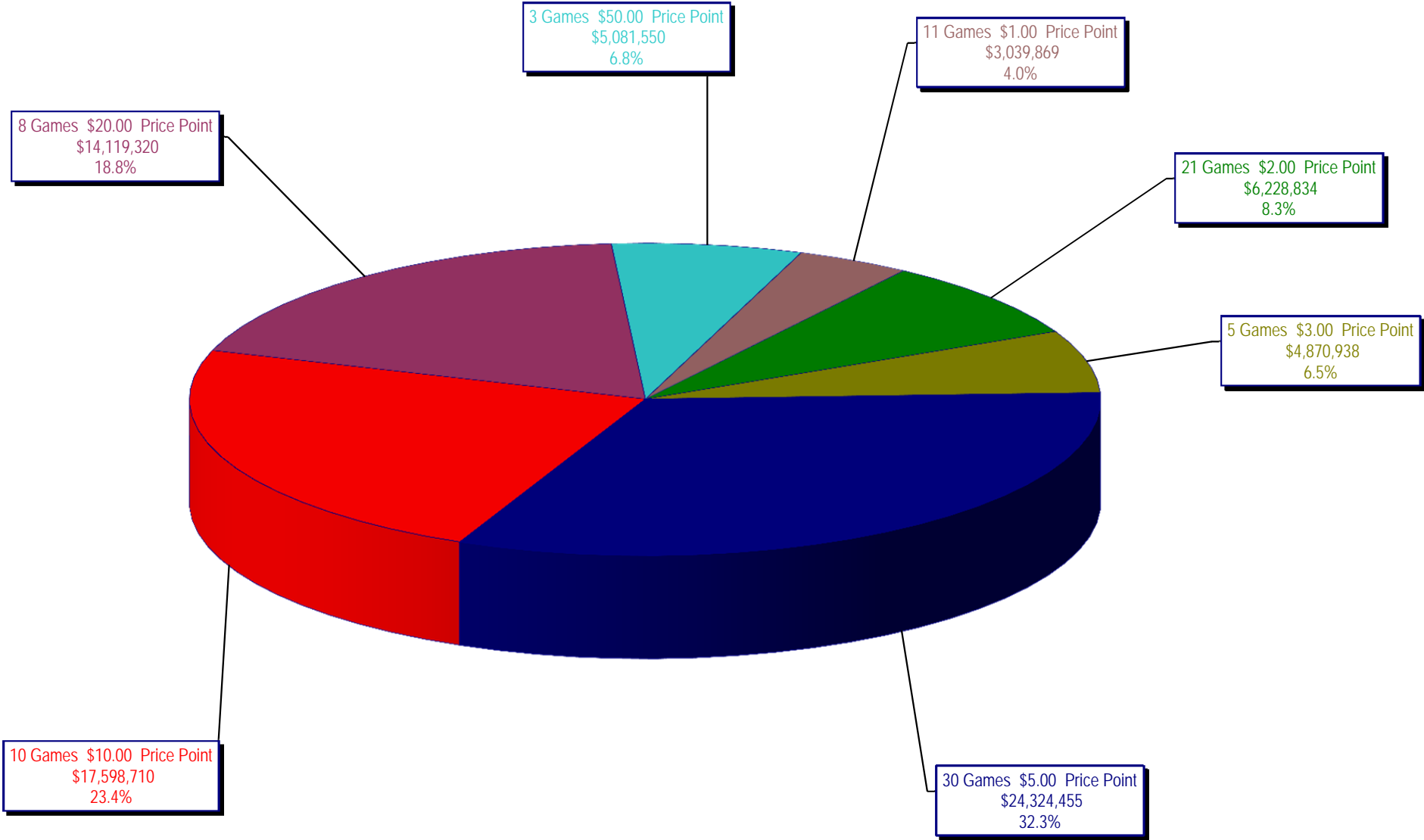
Draw Game Sales

		FY Sales Through Week Ending 5/14/2016		FY Prize Expense Through Week Ending 5/14/2016	Actual* Prize Payout	Base Payout (Prize Pool)
Lotto	\$	87,886,806	\$	49,896,101	56.77%	50.00%
Lotto Extra		15,387,708		8,171,478	53.10%	53.70%
Pick 3		181,705,122		91,475,480	50.34%	50.00%
Pick 3 Sum It Up		3,727,111		1,772,260	47.55%	50.00%
Cash Five		32,976,944		16,488,505	50.00%	50.00%
Texas Two Step		39,302,024		19,958,814	50.78%	50.00%
Mega Millions		89,418,222		45,740,296	51.15%	50.00%**
Megaplier		22,801,758		11,433,384	50.14%	N/A
Daily 4		64,098,686		31,397,325	48.98%	50.00%
Daily 4 Sum It Up		3,401,246		1,302,345	38.29%	50.00%
Powerball		373,926,639		187,166,005	50.05%	50.00%**
Power Play		41,692,185		20,872,832	50.06%	N/A
All or Nothing		22,061,420		12,029,460	54.53%	55.98%
Monopoly		0		(22,993)	0.00%	50.00%
Texas Triple Chance		18,141,520		10,942,027	60.31%	54.42%
<b>Totals</b>	\$	<b>996,527,391</b>	\$	<b>508,623,317</b>	<b>51.04%</b>	

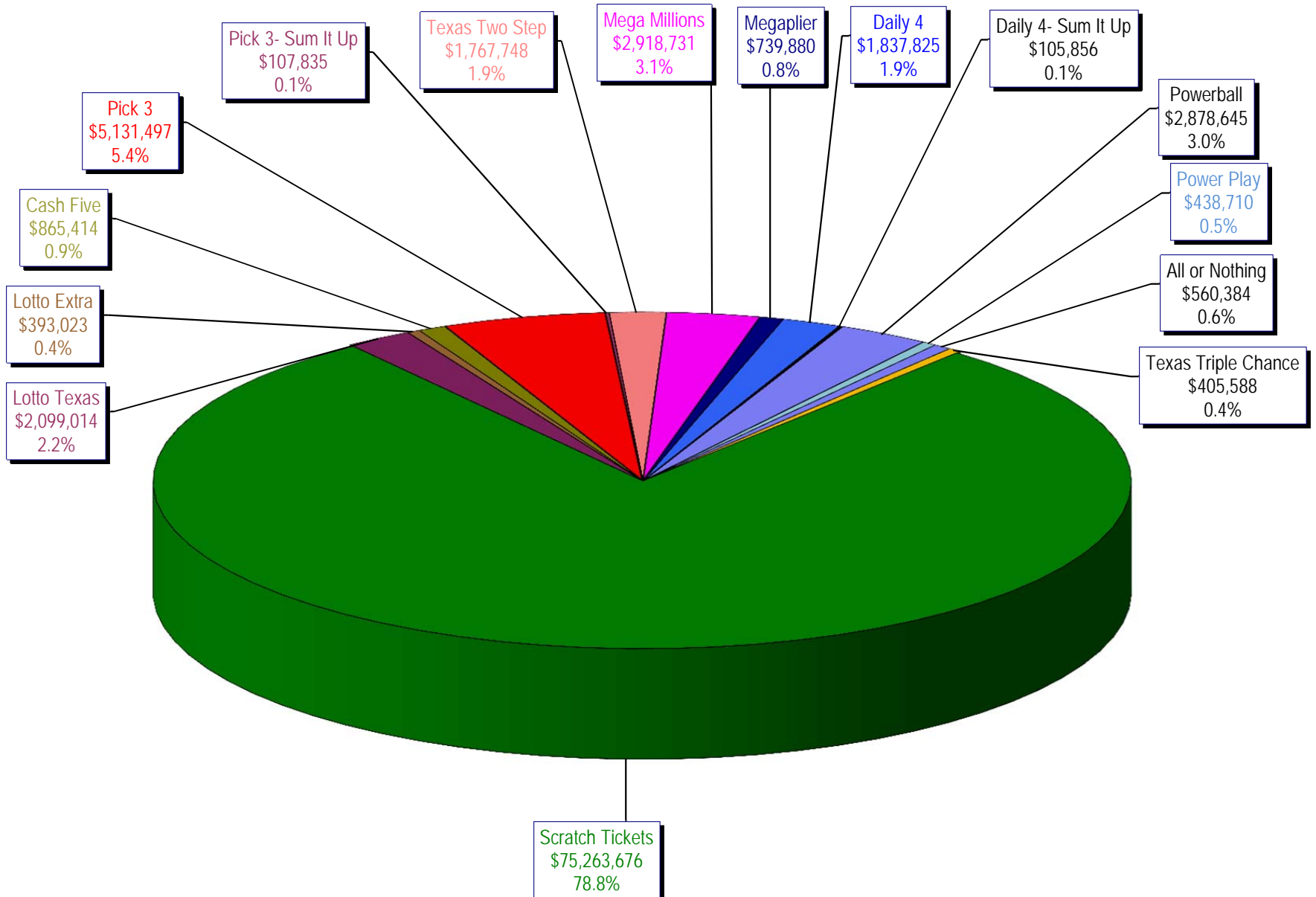
\* Before Unclaimed Prizes

\*\* Estimated; depends on # of guaranteed prizes won in Texas

Texas Lottery Commission  
Scratch Ticket Sales  
For the week ending 5/14/16  
(Unaudited)



**Texas Lottery Commission**  
**All Game Sales**  
**For the week ending 5/14/16**  
**(Unaudited)**



Texas Lottery Commission - Weekly Sales Summary for FY 2016 (Unaudited)

Week Ended	Scratch Tickets	New Games & Dates	Lotto Texas	Jackpot		Lotto Extra	Pick 3	Pick 3 Sum It Up	Cash Five	Texas Two Step	Jackpot		Mega Millions	Jackpot		Megaplier	Daily 4	Daily 4 Sum It Up	Powerball	Jackpot		Power Play	All or Nothing	Texas Triple Chance	Total	Per Cap.
				W	S						M	TH		T	F					W	S					
9/5/2015*	66,843,870	0	2,788,509	25	26	466,121	5,249,348	117,979	956,126	1,253,100	425	575	2,366,640	74	85	608,901	1,725,027	93,067	3,586,482	120	133	484,769	675,614		87,215,551	3.24
9/12/2015	61,566,291	1717 (\$1.N); 1718 (\$5.N); 1748 (\$10.N); 1696 (\$3.N) - 9/08/15	2,793,428	26.5	27.75	465,451	4,974,238	103,203	919,536	1,423,604	725	950	2,511,039	95	106	629,091	1,641,226	86,539	3,927,126	149	167	518,060	638,384		82,197,213	3.05
9/19/2015	63,530,657	0	2,845,557	28.25	29.5	475,307	4,715,566	95,242	928,275	854,109	200	225	1,817,155	15	20	487,946	1,647,829	81,483	5,082,782	185	208	639,614	656,388		83,857,910	3.11
9/26/2015	61,731,400	1720 (\$2.N); 1721 (\$5.N); 1715 (\$5.N) - 9/21/15	2,815,638	30	30.75	468,584	4,735,629	97,118	924,334	1,048,752	300	450	1,860,438	25	31	499,201	1,628,350	82,200	6,648,092	235	267	790,427	653,528		83,983,690	3.12
10/3/2015	67,048,415	0	3,034,763	31.5	32.25	502,043	4,925,789	100,522	919,217	1,347,552	600	725	2,053,673	39	47	539,290	1,662,320	88,291	8,036,576	301	40	884,785	616,594	725,376	92,485,206	3.43
10/10/2015	66,049,706	1722 (\$1.N); 1723 (\$5.N); 1711 (\$20.N) - 10/05/15	2,175,801	5	5.25	366,506	4,803,855	97,005	899,614	1,141,865	925	200	2,113,720	55	65	535,411	1,636,542	86,150	2,572,748	50	60	372,480	593,616	743,664	84,188,683	3.12
10/17/2015	65,073,593	0	2,133,286	5	5	358,076	4,629,752	92,453	876,040	824,622	200	225	2,286,703	75	84	568,477	1,576,323	79,576	2,638,956	70	80	377,157	580,870	754,124	82,850,007	3.07
10/24/2015	64,087,437	1724 (\$2.N); 1769 (\$5.N); 1726 (\$10.N) - 10/19/15	2,099,176	5.25	5.5	358,217	4,515,381	92,071	860,960	991,931	300	425	2,600,946	93	105	626,019	1,553,788	80,225	2,946,077	90	100	411,192	562,378	752,104	82,537,901	3.06
10/31/2015	66,025,374	0	2,165,101	5.75	6	368,559	4,653,961	91,360	873,751	944,275	550	200	2,945,749	117	129	695,705	1,621,009	85,560	3,327,954	110	127	455,266	573,258	766,642	85,593,524	3.18
11/7/2015	68,137,192	1727 (\$1.N); 1728 (\$2.N); 1729 (\$5.N) - 11/02/15	2,232,267	6.25	6.5	379,508	4,977,693	96,887	891,111	911,796	225	300	3,416,380	144	164	795,028	1,688,298	86,418	3,071,581	142	40	425,312	599,980	826,093	88,535,543	3.28
11/14/2015	65,449,428	0	2,185,621	6.75	7	373,102	4,726,211	93,030	870,215	1,087,101	425	575	4,139,462	180	200	938,757	1,614,727	82,536	2,437,413	50	60	357,760	574,596	688,852	85,618,810	3.18
11/21/2015	68,364,421	1730 (\$2.N); 1783 (\$2.N); 1731 (\$5.N) - 11/16/15 1778 (\$2.N) - 11/18/15	2,173,857	7.25	7.5	369,519	4,674,293	88,988	862,630	825,054	200	225	1,830,909	15	20	489,485	1,632,096	82,077	2,553,907	70	80	370,594	586,348	634,850	85,539,027	3.17
11/28/2015	61,091,628	0	2,113,171	7.75	8.25	364,947	4,523,108	87,438	825,047	904,825	300	400	1,785,419	25	31	478,828	1,591,416	82,363	2,886,666	90	100	406,251	546,614	572,902	78,260,621	2.90
12/5/2015	67,830,827	1733 (\$5.N) - 12/5/15	2,245,481	8.75	9.5	385,346	5,020,926	94,445	898,598	957,116	525	200	2,073,099	39	47	545,451	1,789,318	94,198	3,432,248	110	127	467,917	603,222	645,054	87,083,245	3.23
12/12/2015	68,324,452	1751 (\$1.N); 1780 (\$2.N); 1784 (\$5.N) - 12/07/15	2,281,004	10.25	10.75	391,281	4,980,397	94,549	877,611	815,777	225	200	2,160,601	57	66	555,974	1,746,314	86,684	3,835,044	145	164	508,111	592,212	603,850	87,853,860	3.26
12/19/2015	71,041,258	0	2,326,771	11.5	12.25	400,223	4,980,685	95,154	879,423	888,674	225	300	2,322,855	74	85	592,792	1,796,682	92,401	4,707,013	180	202	600,420	573,754	567,994	91,866,098	3.41
12/26/2015	78,125,965	1736 (\$5.N); 1740 (\$20.N) - 12/21/15 1789 (\$3.N) - 12/22/15	2,422,285	12.75	13.5	417,003	4,863,405	91,522	860,361	1,106,519	400	550	2,624,875	94	104	637,157	1,725,445	87,146	5,941,638	227	255	728,720	548,978	531,364	100,712,382	3.74
1/2/2016	76,712,975	0	2,598,993	14.25	15.25	446,634	4,857,347	95,570	883,605	857,640	200	225	3,175,442	117	130	756,602	1,731,866	91,457	10,213,886	300	334	1,168,791	559,472	535,576	104,685,855	3.88
1/9/2016	77,136,541	1738 (\$1.N); 1735 (\$2.N); 1737 (\$10.N) - 1/04/16	3,569,884	16	17	580,778	4,782,398	102,725	899,480	1,029,458	300	425	4,896,815	145	165	1,100,345	1,668,434	91,670	98,440,136	500	900	8,915,982	589,972	621,402	204,426,019	7.58
1/16/2016	73,858,865	0	3,543,250	18	19	585,402	4,666,496	105,064	901,254	834,973	200	225	2,581,249	15	22	661,350	1,658,823	94,886	112,171,706	1.5	40	11,071,288	613,248	615,138	213,962,991	7.94
1/23/2016	70,665,700	1747 (\$5.N); 1790 (\$5.N); 1786 (\$3.N) - 1/18/16	2,864,110	19.5	20.25	492,400	4,696,016	104,467	945,128	846,809	200	225	2,033,849	30	39	535,675	1,742,249	90,096	4,651,362	50	60	646,626	622,838	510,120	91,447,445	3.39
1/30/2016	71,051,685	0	2,291,772	5	5.25	405,017	4,976,880	103,912	948,507	850,282	200	225	2,106,150	48	56	559,777	1,825,583	100,694	4,470,995	75	96	639,118	647,428	507,286	91,485,086	3.39
2/6/2016	78,458,428	1700 (\$1.N); 1702 (\$5.N); 1745 (\$20.N) - 2/01/16	2,298,351	5.5	5.75	412,187	5,095,888	106,149	980,363	1,020,644	300	425	2,198,934	63	71	579,927	1,833,296	99,283	4,823,108	112	136	683,319	650,426	492,926	99,733,228	3.70
2/13/2016	80,754,850	0	2,240,742	6	6.25	405,702	5,332,774	111,268	938,662	848,340	200	225	2,236,840	80	87	592,165	1,918,261	104,613	4,856,599	157	176	684,114	643,040	478,800	102,146,769	3.79
2/20/2016	80,078,271	1677 (\$2.N); 1625 (\$5.N) - 2/15/16	2,219,682	6.5	6.75	405,997	5,261,755	112,333	922,062	1,042,317	300	425	2,348,026	94	104	612,581	1,903,450	105,785	5,158,458	189	212	714,054	637,966	466,916	101,989,653	3.78

Texas Lottery Commission - Weekly Sales Summary for FY 2016 (Unaudited)

Week Ended	Scratch Tickets	New Games & Dates	Lotto Texas	Jackpot W S	Lotto Extra	Pick 3	Pick 3 Sum It Up	Cash Five	Texas Two Step	Jackpot M TH	Mega Millions	Jackpot T F	Megaplier	Daily 4	Daily 4 Sum It Up	Powerball	Jackpot W S	Power Play	All or Nothing	Texas Triple Chance	Total	Per Cap.
2/27/2016	78,832,217	0	2,219,240	7 7.25	408,736	5,046,436	106,701	906,814	1,388,361	575 750	2,482,721	114 125	639,604	1,848,625	96,548	5,807,303	236 266	793,600	624,106	454,291	101,655,303	3.77
3/5/2016	80,019,524	1798 (\$3.N); 1796 (\$5.N) - 2/29/16	2,269,811	7.5 7.75	419,311	5,370,371	115,581	944,505	1,944,339	950 1,175	2,720,417	135 144	706,160	1,962,847	105,379	4,803,055	292 40	675,939	647,306	461,886	103,166,430	3.83
3/12/2016	78,524,214	1746 (\$1.N); 1795 (\$2.N); 1744 (\$5.N); 1719 (\$10.N) - 3/7/16 1797 (\$10.N) - 3/9/16	2,170,297	8 8.75	403,101	5,053,423	109,902	910,388	1,366,495	1,450 200	2,226,025	157 15	593,134	1,852,906	98,700	3,014,836	50 60	463,740	613,990	434,688	97,835,839	3.63
3/19/2016	75,446,960	0	2,172,437	9.25 10	402,218	4,900,867	102,413	890,351	841,665	200 225	1,735,447	20 25	493,521	1,790,457	95,669	3,098,598	70 80	473,822	584,322	419,224	93,447,960	3.47
3/26/2016	75,293,759	1765 (\$2.N); 1739 (\$5.N); 1794 (\$5.N) - 3/21/16	2,203,026	10.5 11.25	407,953	4,968,753	103,551	877,783	824,560	200 200	1,791,339	30 35	505,992	1,802,025	95,644	3,463,026	90 101	517,781	581,954	410,578	93,847,723	3.48
4/2/2016	79,316,221	0	2,122,422	11.75 5	394,135	5,261,943	110,824	894,088	935,633	225 300	1,916,857	43 50	531,849	1,817,508	100,053	3,830,324	116 135	558,131	597,500	411,296	98,798,784	3.67
4/9/2016	74,560,898	1697 (\$1.N); 1791 (\$5.N); 1792 (\$5.N); 1753 (\$20.N) - 4/04/16	2,038,934	5.25 5.5	378,330	5,304,473	108,007	891,933	1,249,036	425 575	1,955,604	57 65	534,602	1,848,661	100,773	4,086,953	148 168	583,012	597,536	422,776	94,661,527	3.51
4/16/2016	74,056,586	0	2,040,155	5.75 6	379,360	5,049,570	103,794	871,898	1,516,463	750 950	2,033,797	72 80	550,669	1,750,927	95,758	4,646,599	184 205	644,230	568,884	425,310	94,733,999	3.51
4/23/2016	73,110,080	1754 (\$2.N); 1803 (\$5.N); 1756 (\$50.N) - 4/18/16	2,019,157	6.25 6.5	377,799	4,803,711	100,291	848,658	817,309	200 225	2,109,430	89 97	570,565	1,717,521	90,147	5,191,116	227 251	705,295	548,786	413,554	93,423,419	3.47
4/30/2016	73,448,019	0	2,075,979	6.75 7	394,302	4,950,931	101,225	861,322	1,063,843	300 425	2,442,563	108 118	642,063	1,792,240	97,874	6,414,863	282 314	848,318	559,358	421,746	96,114,645	3.57
5/7/2016	77,593,399	1689 (\$1.N); 1750 (\$5.N); 1743 (\$10.N) - 5/02/16	2,293,077	7.25 7.5	436,015	5,127,841	106,834	884,249	1,417,685	575 750	2,919,675	128 138	750,519	1,816,986	99,541	14,697,176	348 415	1,723,048	570,772	419,550	110,856,367	4.11
5/14/2016	75,263,676	1788 (\$2.N) - 5/09/16	2,099,014	7.75 8	393,023	5,131,497	107,835	865,414	1,767,748	950 1,200	2,918,731	150 161	739,880	1,837,825	105,856	2,878,645	40 50	438,710	560,384	405,588	95,513,825	3.54
weekly change	-3.0%		-8.5%		-9.9%	0.1%	0.9%	-2.1%	24.7%		0.0%		-1.4%	1.1%	6.3%	-80.4%		-74.5%	-1.8%	-3.3%	-13.8%	
<b>SALES</b>			<b>SALES</b>		<b>SALES</b>	<b>SALES</b>	<b>SALES</b>	<b>SALES</b>	<b>SALES</b>		<b>SALES</b>		<b>SALES</b>	<b>SALES</b>	<b>SALES</b>	<b>SALES</b>		<b>SALES</b>	<b>SALES</b>	<b>SALES</b>	<b>SALES</b>	<b>% of Sales</b>
Calendar Year to date	1,469,635,373		45,865,748		8,271,078	97,363,636	2,053,278	17,452,067	21,685,874		46,765,982		12,168,677	34,934,945	1,899,289	301,365,504		32,330,155	11,630,704	8,959,189	2,112,381,498	100.0%
Fiscal Year to date 2016	2,637,195,161		87,886,806		15,387,708	181,705,122	3,727,111	32,976,944	39,302,024		89,418,222		22,801,758	64,098,686	3,401,246	373,926,639		41,692,185	22,061,420	18,141,520	3,633,722,552	100.0%
*Full week includes 2 days from FY15																						