



WEEKLY SALES SUMMARY

Unaudited

[Week Ending: 05/18/2013](#)

Texas Lottery Commission
Fiscal Year to Date Sales Comparison
Unaudited

Through the week ending 05/18/2013 (38 weeks)

Sales by Game	FY 2011 *	FY 2012 **	FY 2013	\$ Change		% Change	
				FY 2013 to FY 2011	FY 2013 to FY 2012	FY 2013 to FY 2011	FY 2013 to FY 2012
Instants	\$ 2,085,715,514	\$ 2,236,170,395	\$ 2,329,956,159	\$ 244,240,645	\$ 93,785,764	11.7%	4.2%
Lotto Texas	125,150,026	126,073,327	107,005,471	-18,144,555	-19,067,856	-14.5%	-15.1%
Lotto Extra	-	-	1,762,513	1,762,513	1,762,513	-	-
Pick 3	200,075,041	196,760,073	193,229,951	-6,845,090	-3,530,123	-3.4%	-1.8%
Pick 3 Sum It Up	4,068,464	4,088,852	3,635,582	-432,883	-453,270	-10.6%	-11.1%
Cash Five	47,098,354	47,607,015	40,265,216	-6,833,138	-7,341,799	-14.5%	-15.4%
Texas Two Step	35,412,172	47,755,097	43,180,983	7,768,811	-4,574,114	21.9%	-9.6%
Mega Millions	139,656,829	176,947,948	82,375,497	-57,281,332	-94,572,451	-41.0%	-53.4%
Megaplier	28,706,200	33,081,144	18,742,123	-9,964,077	-14,339,021	-34.7%	-43.3%
Daily 4	42,186,361	47,550,784	52,712,833	10,526,472	5,162,050	25.0%	10.9%
Daily 4 Sum It Up	3,229,343	3,456,896	3,426,065	196,722	-30,831	6.1%	-0.9%
Powerball	67,190,896	112,485,740	224,071,985	156,881,089	111,586,246	233.5%	99.2%
Power Play	15,773,600	19,131,077	22,821,017	7,047,417	3,689,941	44.7%	19.3%
All or Nothing	-	-	60,033,823	60,033,823	60,033,823	-	-
Total	\$ 2,794,262,799	\$ 3,051,108,346	\$ 3,183,219,217	\$ 388,956,418	\$ 132,110,871	13.9%	4.3%

* 3 extra days

** 2 extra days

Texas Lottery Commission
Fiscal Year to Date Cumulative Average Sales Comparison
Unaudited

Through the week ending 05/18/2013 (38 weeks)

Sales by Game	FY 2011	FY 2012	FY 2013
Instants	\$ 7,930,477	\$ 8,535,002	\$ 8,961,370
Lotto Texas	475,856	481,196	411,560
Lotto Extra	-	-	50,358 **
Pick 3	760,742	750,993	743,192
Pick 3 Sum It Up	15,469	15,606	13,983
Cash Five	179,081	181,706	154,866
Texas Two Step	134,647	182,271	166,081
Mega Millions	531,015	675,374	316,829
Megaplier	109,149	126,264	72,085
Daily 4	160,404	181,492	202,742
Daily 4 Sum It Up	12,279	13,194	13,177
Powerball	255,479	429,335	861,815
Power Play	59,976	73,019	87,773
All or Nothing	-	-	238,229 *
Total	\$ <u>10,624,573</u>	\$ <u>11,645,452</u>	\$ <u>12,294,060</u>

thru 05/21/2011
263 days

thru 05/19/2012
262 days

thru 05/18/2013
260 days
* 252 days
** 35 days

Texas Lottery Commission
Fiscal Year Over Year Change in Sales
Unaudited
FY 2013 Compared to FY 2012

Week	FY 2013 Week Ending	INSTANT TICKETS				DRAW GAMES				TOTAL SALES			
		FY 2013	FY 2012	Difference	% change - Cumulative Sales	FY 2013	FY 2012	Difference	% change - Cumulative Sales	FY 2013	FY 2012	Difference	% change - Cumulative Sales
1	9/1/2012**	\$9,611,328	\$25,147,181	(\$15,535,853)	-61.8%	\$3,712,535	\$9,704,561	(\$5,992,026)	-61.7%	\$13,323,863	\$34,851,742	(\$21,527,879)	-61.8%
2	9/8/2012	\$56,941,761	\$50,591,068	\$6,350,693	12.6%	\$19,305,417	\$17,681,853	\$1,623,564	9.2%	\$76,247,178	\$68,272,921	\$7,974,257	11.7%
3	9/15/2012	\$56,302,875	\$49,835,063	\$6,467,812	13.0%	\$20,857,230	\$16,842,326	\$4,014,904	23.8%	\$77,160,105	\$66,677,389	\$10,482,716	15.7%
4	9/22/2012	\$54,974,438	\$49,777,138	\$5,197,300	10.4%	\$20,570,277	\$17,504,800	\$3,065,477	17.5%	\$75,544,715	\$67,281,938	\$8,262,777	12.3%
5	9/29/2012	\$54,606,674	\$51,040,274	\$3,566,400	7.0%	\$20,462,690	\$18,653,100	\$1,809,591	9.7%	\$75,069,364	\$69,693,374	\$5,375,991	7.7%
6	10/6/2012	\$59,223,327	\$53,715,157	\$5,508,170	10.3%	\$19,279,973	\$17,225,680	\$2,054,293	11.9%	\$78,503,300	\$70,940,837	\$7,562,463	10.7%
7	10/13/2012	\$57,075,606	\$51,942,121	\$5,133,485	9.9%	\$18,638,467	\$17,854,980	\$783,487	4.4%	\$75,714,073	\$69,797,101	\$5,916,972	8.5%
8	10/20/2012	\$56,630,134	\$52,837,769	\$3,792,365	7.2%	\$18,998,943	\$19,558,519	(\$559,577)	-2.9%	\$75,629,077	\$72,396,288	\$3,232,789	4.5%
9	10/27/2012	\$55,789,743	\$52,206,644	\$3,583,099	6.9%	\$20,130,190	\$21,504,565	(\$1,374,376)	-6.4%	\$75,919,933	\$73,711,209	\$2,208,724	3.0%
10	11/3/2012	\$58,142,777	\$56,265,310	\$1,877,467	3.3%	\$20,638,008	\$20,870,086	(\$232,079)	-1.1%	\$78,780,785	\$77,135,396	\$1,645,389	2.1%
11	11/10/2012	\$57,484,804	\$55,682,645	\$1,802,159	3.2%	\$20,862,872	\$18,622,404	\$3,000,468	16.8%	\$78,347,676	\$73,545,049	\$4,802,627	6.5%
12	11/17/2012	\$55,805,228	\$54,978,079	\$827,149	1.5%	\$21,660,705	\$17,879,985	\$3,780,721	21.1%	\$77,465,933	\$72,858,064	\$4,607,870	6.3%
13	11/24/2012	\$61,331,977	\$53,942,448	\$7,389,529	13.7%	\$27,172,853	\$16,877,145	\$10,295,708	61.0%	\$88,504,830	\$70,819,593	\$17,685,237	25.0%
14	12/1/2012	\$58,420,598	\$57,153,469	\$1,267,129	2.2%	\$62,797,943	\$18,298,636	\$44,499,307	243.2%	\$121,218,541	\$75,452,105	\$45,766,436	60.7%
15	12/8/2012	\$62,489,745	\$55,318,284	\$7,171,461	13.0%	\$19,630,155	\$19,033,326	\$596,829	3.1%	\$82,119,900	\$74,351,610	\$7,768,290	10.4%
16	12/15/2012	\$59,661,880	\$58,612,629	\$1,049,251	1.8%	\$20,064,982	\$20,045,279	\$19,704	0.1%	\$79,726,862	\$78,657,908	\$1,068,955	1.4%
17	12/22/2012	\$63,556,886	\$60,628,256	\$2,928,630	4.8%	\$19,084,653	\$22,572,986	(\$3,488,333)	-15.5%	\$82,641,539	\$83,201,242	(\$559,703)	-0.7%
18	12/29/2012	\$63,547,886	\$63,065,007	\$482,879	0.8%	\$17,359,874	\$19,948,521	(\$2,588,647)	-13.0%	\$80,907,760	\$83,013,528	(\$2,105,768)	-2.5%
19	1/5/2013	\$60,452,721	\$60,479,896	(\$27,175)	0.0%	\$18,833,047	\$17,331,888	\$1,501,159	8.7%	\$79,285,768	\$77,811,784	\$1,473,984	1.9%
20	1/12/2013	\$58,862,997	\$57,689,526	\$1,173,471	2.0%	\$18,879,167	\$17,568,732	\$1,310,435	7.5%	\$77,742,164	\$75,258,258	\$2,483,906	3.3%
21	1/19/2013	\$58,494,057	\$58,704,854	(\$210,797)	-0.4%	\$19,258,004	\$19,886,540	(\$628,537)	-3.2%	\$77,752,061	\$78,591,394	(\$839,334)	-1.1%
22	1/26/2013	\$57,871,744	\$57,611,325	\$260,419	0.5%	\$20,093,215	\$20,641,697	(\$548,483)	-2.7%	\$77,964,959	\$78,253,022	(\$288,064)	-0.4%
23	2/2/2013	\$61,846,715	\$65,553,366	(\$3,706,651)	-5.7%	\$21,032,335	\$23,689,855	(\$2,657,521)	-11.2%	\$82,879,050	\$89,243,221	(\$6,364,172)	-7.1%
24	2/9/2013	\$70,374,906	\$75,070,485	(\$4,695,579)	-6.3%	\$21,183,638	\$28,361,583	(\$7,177,945)	-25.3%	\$91,558,544	\$103,432,068	(\$11,873,524)	-11.5%
25	2/16/2013	\$71,002,438	\$66,679,947	\$4,322,491	6.5%	\$19,295,197	\$19,588,615	(\$293,418)	-1.5%	\$90,297,635	\$86,268,562	\$4,029,073	4.7%
26	2/23/2013	\$71,203,934	\$64,868,899	\$6,335,035	9.8%	\$19,729,989	\$19,965,388	(\$235,399)	-1.2%	\$90,933,923	\$84,834,287	\$6,099,636	7.2%
27	3/2/2013	\$74,551,567	\$67,135,065	\$7,416,502	11.0%	\$20,278,327	\$20,947,181	(\$668,854)	-3.2%	\$94,829,894	\$88,082,246	\$6,747,648	7.7%
28	3/9/2013	\$75,360,138	\$68,299,006	\$7,061,132	10.3%	\$21,447,763	\$22,152,639	(\$704,876)	-3.2%	\$96,807,901	\$90,451,645	\$6,356,256	7.0%
29	3/16/2013	\$70,065,528	\$65,013,692	\$5,051,836	7.8%	\$22,055,563	\$23,351,718	(\$1,296,155)	-5.6%	\$92,121,091	\$88,365,410	\$3,755,682	4.3%
30	3/23/2013	\$70,137,284	\$64,035,255	\$6,102,029	9.5%	\$28,709,024	\$27,416,609	\$1,292,415	4.7%	\$98,846,308	\$91,451,864	\$7,394,444	8.1%
31	3/30/2013	\$68,758,522	\$65,135,991	\$3,622,531	5.6%	\$18,597,091	\$84,628,987	(\$66,031,896)	-78.0%	\$87,355,613	\$149,764,978	(\$62,409,365)	-41.7%
32	4/6/2013	\$73,270,054	\$66,860,957	\$6,409,097	9.6%	\$20,048,992	\$19,899,400	\$149,592	0.8%	\$93,319,046	\$86,760,357	\$6,558,689	7.6%
33	4/13/2013	\$64,738,900	\$64,028,898	\$710,002	1.1%	\$19,697,793	\$20,220,141	(\$522,349)	-2.6%	\$84,436,693	\$84,249,039	\$187,654	0.2%
34	4/20/2013	\$63,252,072	\$63,623,892	(\$371,820)	-0.6%	\$20,245,083	\$20,974,282	(\$729,199)	-3.5%	\$83,497,155	\$84,598,174	(\$1,101,019)	-1.3%
35	4/27/2013	\$62,766,647	\$61,743,623	\$1,023,024	1.7%	\$21,162,888	\$20,267,388	\$895,500	4.4%	\$83,929,535	\$82,011,011	\$1,918,524	2.3%
36	5/4/2013	\$66,251,082	\$64,851,962	\$1,399,120	2.2%	\$23,628,101	\$20,642,982	\$2,985,119	14.5%	\$89,879,183	\$85,494,944	\$4,384,239	5.1%
37	5/11/2013	\$65,748,723	\$65,472,556	\$276,167	0.4%	\$26,735,480	\$19,140,768	\$7,594,713	39.7%	\$82,484,203	\$84,613,324	(\$2,129,121)	-2.5%
38	5/18/2013	\$63,348,463	\$60,572,658	\$2,775,805	4.6%	\$61,124,604	\$18,342,814	\$42,781,791	233.2%	\$124,473,067	\$78,915,472	\$45,557,596	57.7%
39	5/25/2013		\$58,959,028				\$18,618,060				\$77,577,088		
40	6/1/2013		\$57,409,086				\$19,014,645				\$76,423,731		
41	6/8/2013		\$59,845,545				\$20,527,958				\$80,373,503		
42	6/15/2013		\$57,021,498				\$19,386,186				\$76,407,684		

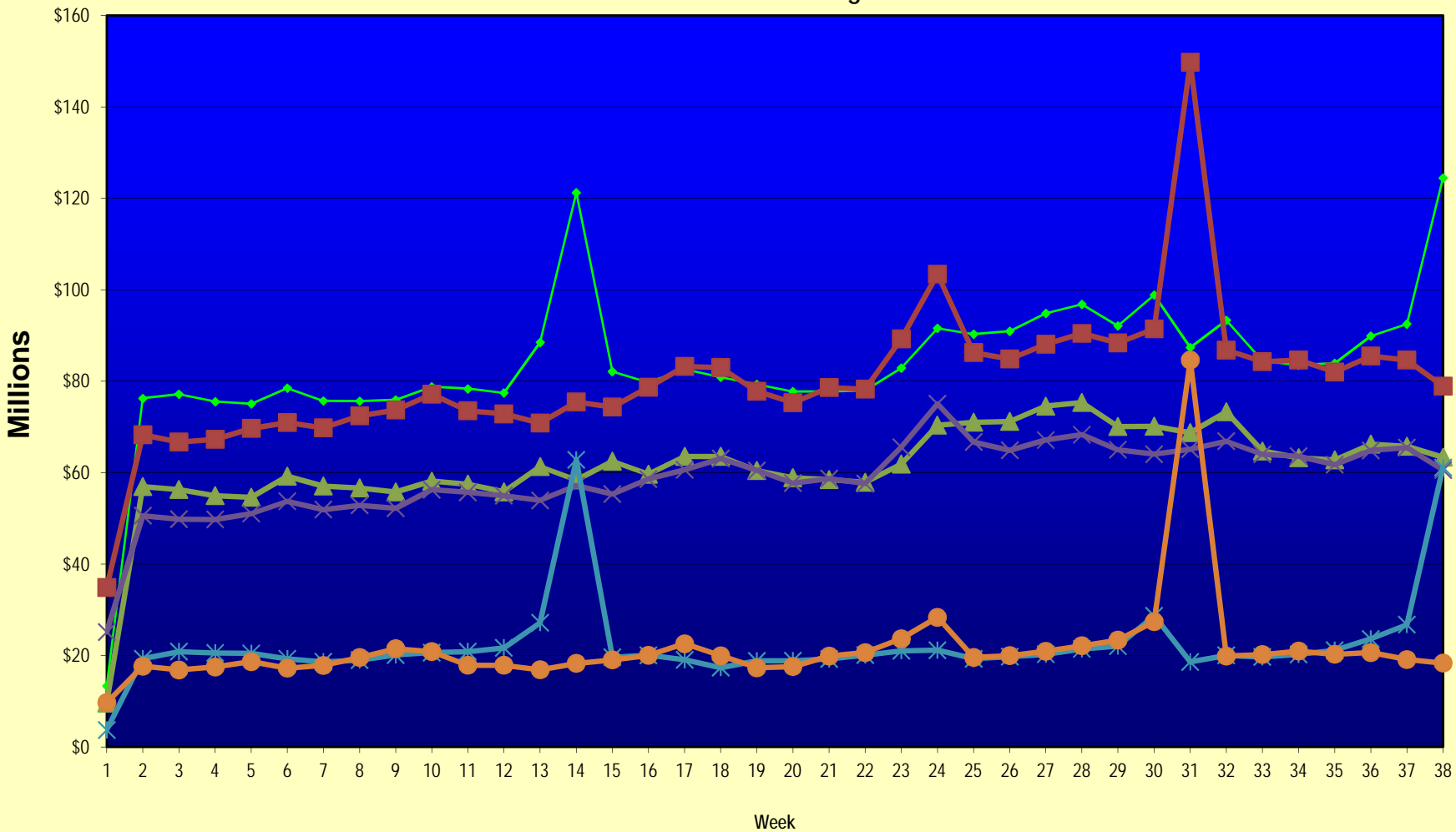
Note: Week 1 is not a full week of sales as this report is prepared on a Fiscal Year basis.

Texas Lottery Commission
Fiscal Year Over Year Change in Sales
Unaudited
FY 2013 Compared to FY 2012

Week	FY 2013 Week Ending	INSTANT TICKETS				DRAW GAMES				TOTAL SALES			
		FY 2013	FY 2012	Difference	% change - Cumulative Sales	FY 2013	FY 2012	Difference	% change - Cumulative Sales	FY 2013	FY 2012	Difference	% change - Cumulative Sales
43	6/22/2013		\$57,892,076				\$17,594,154				\$75,486,230		
44	6/29/2013		\$57,497,435				\$18,153,658				\$75,651,093		
45	7/6/2013		\$60,345,000				\$19,059,152				\$79,404,152		
46	7/13/2013		\$57,683,321				\$18,751,043				\$76,434,364		
47	7/20/2013		\$57,083,343				\$18,769,201				\$75,852,544		
48	7/27/2013		\$54,006,781				\$18,934,103				\$72,940,884		
49	8/3/2013		\$56,557,409				\$20,206,705				\$76,764,114		
50	8/10/2013		\$57,799,452				\$22,832,120				\$80,631,572		
51	8/17/2013		\$54,845,724				\$25,435,624				\$80,281,348		
52	8/24/2013		\$55,661,277				\$17,524,474				\$73,185,751		
	8/31/2013		\$47,363,984				\$14,929,528				\$62,293,512		
Total thru Current Week		\$2,329,956,159	\$2,236,170,395	\$93,785,764	4.2%	\$853,263,058	\$814,937,951	\$38,325,107	4.7%	\$3,183,219,217	\$3,051,108,346	\$132,110,871	4.3%
Fiscal Year Total		\$2,329,956,159	\$3,086,141,354			\$853,263,058	\$1,104,674,559			\$3,183,219,217	\$4,190,815,913		

** FY 2012 includes 3 days; FY 2013 includes 1 day.

Texas Lottery Commission Fiscal Year Over Year Change in Sales



◆ Total Sales 2013
 ■ Total Sales 2012
 ▲ Instant Tickets 2013
 × Instant Tickets 2012
 ✱ Draw Games 2013
 ● Draw Games 2012

Note: Week 1 is not a full week of sales as this report is prepared on a Fiscal Year basis.

Texas Lottery Commission
Instant Tickets by Price Point
Sales, Prize Expense, Sales Contribution and Payout Percentage With Year Over Year Changes
Unaudited

Fiscal Year	Price Point	# of Active Games	FY Sales	% of Instant Ticket Sales	Year over Year Change in Sales	FY Prize Expense	Year over Year Change in Prize Expense	FY Sales Contribution	Year over Year Change in Contribution	Average Prize Payout %	Year over Year Change in Payout %
2012	\$1.00	34	161,184,829	7.2%		98,018,122		63,166,707		60.8%	0.1%
thru	\$2.00	35	302,418,698	13.5%		196,682,489		105,736,209		65.0%	-0.8%
5/19/2012	\$3.00	19	266,082,558	11.9%		174,394,953		91,687,605		65.5%	-0.1%
	\$5.00	46	732,443,510	32.8%		498,497,472		233,946,038		68.1%	0.2%
	\$7.00	4	18,185,510	0.8%		12,366,030		5,819,480		68.0%	0.0%
	\$10.00	17	368,954,810	16.5%		260,920,138		108,034,672		70.7%	-0.4%
	\$20.00	7	290,810,680	13.0%		217,279,939		73,530,741		74.7%	0.1%
	\$50.00	2	96,089,800	4.3%		74,616,930		21,472,870		77.7%	0.0%
Total		164	\$2,236,170,395			\$1,532,776,074		\$703,394,321		68.5%	0.1%
2013	\$1.00	32	140,226,682	6.0%		85,523,296		54,703,386		61.0%	0.6%
thru	\$2.00	36	294,627,862	12.6%		191,504,091		103,123,771		65.0%	-0.1%
5/18/2013	\$3.00	21	277,255,293	11.9%		181,664,292		95,591,001		65.5%	0.0%
	\$5.00	56	739,730,545	31.7%		503,372,261		236,358,284		68.0%	0.1%
	\$7.00	2	16,199,547	0.7%		11,010,286		5,189,261		68.0%	0.0%
	\$10.00	12	425,145,490	18.2%		302,230,928		122,914,562		71.1%	0.3%
	\$20.00	9	328,452,040	14.1%		245,906,615		82,545,425		74.9%	0.1%
	\$50.00	3	108,318,700	4.6%		84,095,684		24,223,016		77.6%	0.0%
Total		171	\$2,329,956,159			\$1,605,307,453		\$724,648,706		68.9%	0.4%
Variance	\$1.00	-2	-20,958,147		-13.0%	-12,494,827	-12.7%	-8,463,320	-13.4%	0.18%	
2013 to	\$2.00	1	-7,790,836		-2.6%	-5,178,398	-2.6%	-2,612,438	-2.5%	-0.04%	
2012	\$3.00	2	11,172,735		4.2%	7,269,340	4.2%	3,903,395	4.3%	-0.02%	
	\$5.00	10	7,287,035		1.0%	4,874,789	1.0%	2,412,246	1.0%	-0.01%	
	\$7.00	-2	-1,985,963		-10.9%	-1,355,744	-11.0%	-630,219	-10.8%	-0.03%	
	\$10.00	-5	56,190,680		15.2%	41,310,790	15.8%	14,879,890	13.8%	0.37%	
	\$20.00	2	37,641,360		12.9%	28,626,676	13.2%	9,014,684	12.3%	0.15%	
	\$50.00	1	12,228,900		12.7%	9,478,754	12.7%	2,750,146	12.8%	-0.02%	
Total		7	\$93,785,764		4.2%	\$72,531,380	4.7%	\$21,254,384	3.0%	0.32%	

Notes - Instant Ticket Variances

Texas Lottery Commission
Instant Tickets by Price Point
Sales, Prize Expense, Sales Contribution and Payout Percentage With Year Over Year Changes
 Unaudited

			FY 2013		FY 2012	Difference
Sales	\$1 - \$7	1	\$1,468,039,929		\$1,480,315,105	-\$12,275,176
Prize Exp.	\$1 - \$7	1	\$973,074,226		\$979,959,066	-\$6,884,841
Sales Cont.	\$1 - \$7	1	\$494,965,703		\$500,356,039	-\$5,390,335
Prize Exp. %	\$1 - \$7	1	66.3%		66.2%	0.1%
			FY 2013		FY 2012	Difference
Sales	\$10 - \$50	2	\$861,916,230		\$755,855,290	\$106,060,940
Prize Exp.	\$10 - \$50	2	\$632,233,227		\$552,817,007	\$79,416,220
Sales Cont.	\$10 - \$50	1	\$229,683,003		\$203,038,283	\$26,644,720
Prize Exp. %	\$10 - \$50	2	73.4%		73.1%	0.2%
			FY 2013		FY 2012	Difference
Sales	Instant		\$2,329,956,159		\$2,236,170,395	\$93,785,764
Prize Exp.	Instant		\$1,605,307,453		\$1,532,776,074	\$72,531,380
Sales Cont.	Instant		\$724,648,706		\$703,394,321	\$21,254,384
Prize Exp. %	Instant		68.9%		68.5%	0.4%

			FY 2013		FY 2012	Difference
Sales	\$1 - \$10		\$1,893,185,419		\$1,849,269,915	\$43,915,504
Prize Exp.	\$1 - \$10		\$1,275,305,154		\$1,240,879,205	\$34,425,949
Sales Cont.	\$1 - \$10		\$617,880,265		\$608,390,710	\$9,489,555
Prize Exp. %	\$1 - \$10		67.4%		67.1%	0.3%
			FY 2013		FY 2012	Difference
Sales	\$20 - \$50		\$436,770,740		\$386,900,480	\$49,870,260
Prize Exp.	\$20 - \$50		\$330,002,300		\$291,896,869	\$38,105,430
Sales Cont.	\$20 - \$50		\$106,768,441		\$95,003,611	\$11,764,830
Prize Exp. %	\$20 - \$50		75.6%		75.4%	0.1%
			FY 2013		FY 2012	Difference
Sales	Instant		\$2,329,956,159		\$2,236,170,395	\$93,785,764
Prize Exp.	Instant		\$1,605,307,453		\$1,532,776,074	\$72,531,380
Sales Cont.	Instant		\$724,648,706		\$703,394,321	\$21,254,384
Prize Exp. %	Instant		68.9%		68.5%	0.4%

Texas Lottery Commission
Weekly Sales Summary
& Comparison to Previous Week
 Unaudited

	Week Ending 05/18/2013		Week Ending 05/11/2013			
	<u>THIS WEEK</u>	% of Sales	<u>LAST WEEK</u>	% of Sales	<u>\$ change</u>	<u>% change</u>
Total Sales	<u>\$124,473,067</u>		<u>\$92,484,203</u>		<u>\$31,988,864</u>	34.59%
Instant Tickets	<u>\$63,348,463</u>	50.9%	<u>\$65,748,723</u>	71.1%	<u>-\$2,400,260</u>	-3.65%
Lotto	\$3,068,986	2.5%	\$2,618,698	2.8%	\$450,288	17.20%
Lotto Extra	\$336,607	0.3%	\$304,701	0.3%	\$31,906	0.00%
Pick 3	\$5,145,781	4.1%	\$5,282,649	5.7%	-\$136,869	-2.59%
Pick 3 Sum It Up	\$96,884	0.1%	\$100,856	0.1%	-\$3,972	-3.94%
Cash Five	\$1,049,188	0.8%	\$1,050,970	1.1%	-\$1,782	-0.17%
Texas Two Step	\$903,399	0.7%	\$1,879,170	2.0%	-\$975,771	-51.93%
Mega Millions	\$5,709,992	4.6%	\$3,840,752	4.2%	\$1,869,240	48.67%
Megaplier	\$1,071,819	0.9%	\$766,476	0.8%	\$305,343	39.84%
Daily 4	\$1,471,426	1.2%	\$1,514,601	1.6%	-\$43,176	-2.85%
Daily 4 Sum It Up	\$95,206	0.1%	\$95,816	0.1%	-\$610	-0.64%
Powerball	\$37,843,274	30.4%	\$7,222,922	7.8%	\$30,620,352	423.93%
Power Play	\$2,982,779	2.4%	\$767,371	0.8%	\$2,215,408	288.70%
All or Nothing	\$1,349,264	1.1%	\$1,290,498	1.4%	\$58,766	4.55%
Total Draw Game Sales	<u>\$61,124,604</u>		<u>\$26,735,480</u>		<u>\$34,389,124</u>	128.63%

* Totals may not sum due to rounding.

Texas Lottery Commission
Weekly Sales Summary
Unaudited

INSTANT TICKETS
TOP TEN SELLING GAMES

For the Week Ending: 05/18/13

Rank	Price Point	Game	Sales (Millions)
1	\$ 20	20X CASH	\$ 4.980
2	\$ 10	10X MEGA MONEY	\$ 4.409
3	\$ 5	MONEY MANIA	\$ 2.547
4	\$ 5	PLATINUM 10X	\$ 2.508
5	\$ 10	\$200 MILLION CASH SPECTACULAR	\$ 2.173
6	\$ 20	\$500 MILLION EXTREME CASH BLAST	\$ 1.997
7	\$ 3	LOTERIA TEXAS	\$ 1.986
8	\$ 50	\$7,500,000 FORTUNE	\$ 1.939
9	\$ 5	DIAMONDS & GOLD	\$ 1.884
10	\$ 5	\$75,000 CASHWORD-O-RAMA	\$ 1.834

Texas Lottery Commission
Prize Payout Tracking Report
Unaudited

Through Week Ending 05/18/13

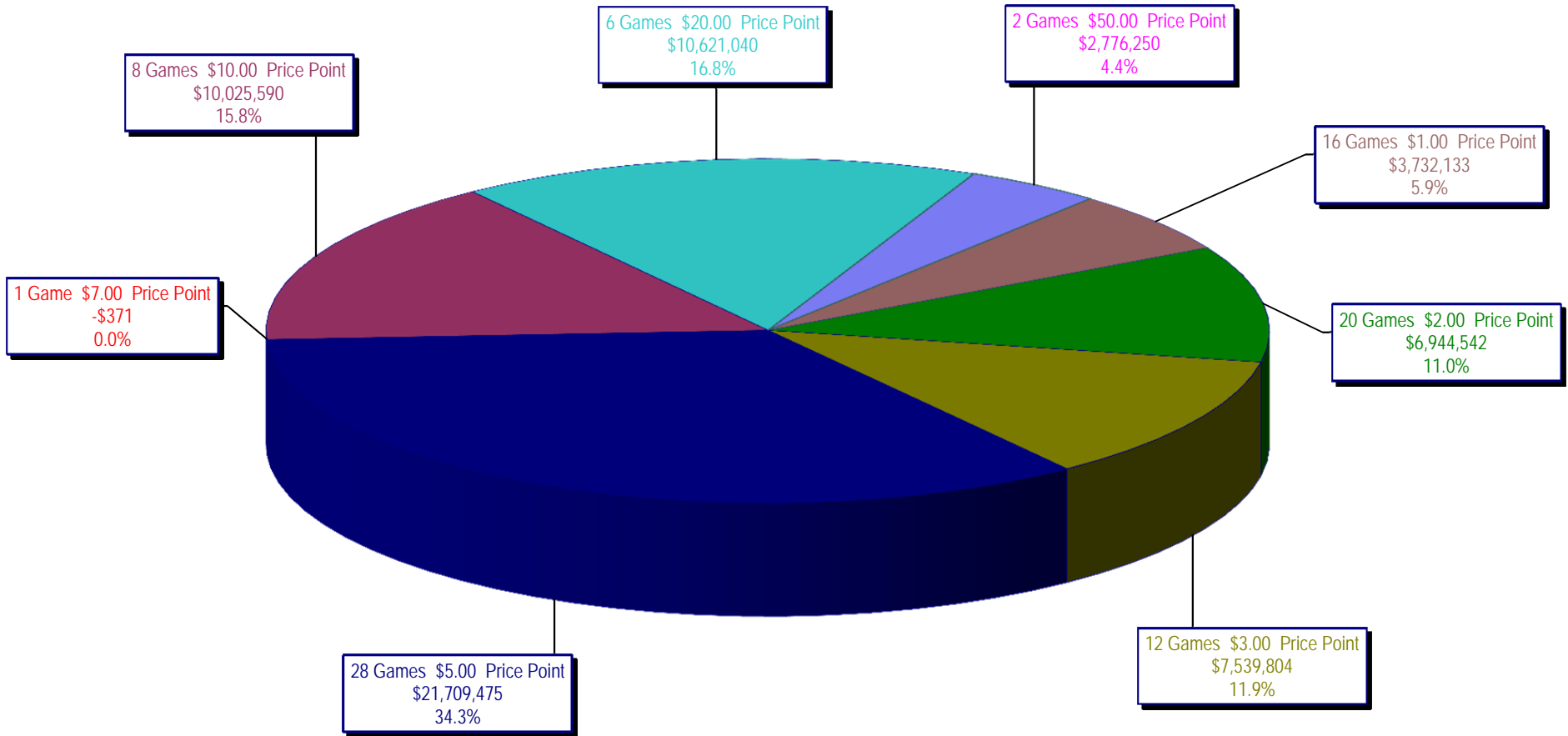
Draw Game Sales

		FY Sales Through Week Ending 5/18/2013		FY Prize Expense Through Week Ending 5/18/2013	Actual* Prize Payout	Base Payout (Prize Pool)
Lotto	\$	107,005,471	\$	82,830,556	77.41%	50.00%
Lotto Extra		1,762,513		936,038	53.11%	50.00%
Pick 3		193,229,951		96,116,780	49.74%	50.00%
Pick 3 Sum It Up		3,635,582		1,804,855	49.64%	50.00%
Cash Five		40,265,216		20,134,396	50.00%	50.00%
Texas Two Step		43,180,983		21,742,372	50.35%	50.00%
Mega Millions		82,375,497		40,473,238	49.13%	50.00%**
Megaplier		18,742,123		8,435,715	45.01%	N/A
Daily 4		52,712,833		26,913,450	51.06%	50.00%
Daily 4 Sum It Up		3,426,065		1,581,237	46.15%	50.00%
Powerball		224,071,985		114,680,480	51.18%	50.00%**
Power Play		22,821,017		12,378,070	54.24%	N/A
All or Nothing		60,033,823		34,696,106	57.79%	50.00%
Totals	\$	853,263,058	\$	462,723,293	54.23%	

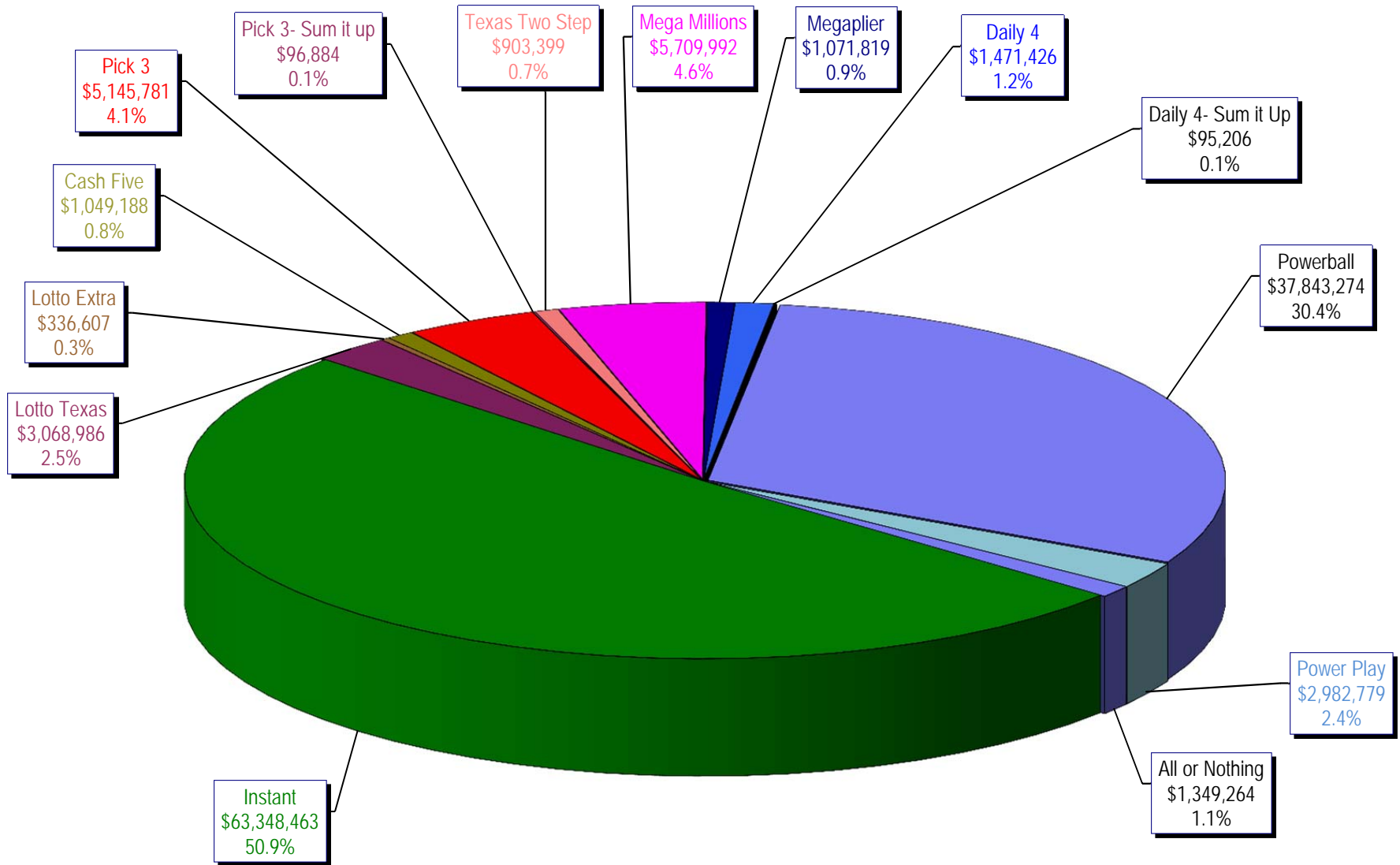
* Before Unclaimed Prizes

** Estimated; depends on # of guaranteed prizes won in Texas

Texas Lottery Commission
Instant Ticket Sales
For the Week Ending 05/18/13
(Unaudited)



Texas Lottery Commission
All Game Sales
For the Week Ending 05/18/13
(Unaudited)



Texas Lottery Commission - Weekly Sales Summary for FY 2013 (Unaudited)

Week Ended	Instant Games	New Games & Dates	Lotto Texas	Jackpot W	Jackpot S	Lotto Extra	Pick 3	Pick 3 Sum It Up	Cash Five	Texas Two Step	Jackpot M	Jackpot TH	Mega Millions	Jackpot T	Jackpot F	Megaplier	Daily 4	Daily 4 Sum It Up	Powerball	Jackpot W	Jackpot S	Power Play	All or Nothing	Total	Per Cap.
9/1/2012	56,975,312	1446 (\$1, N); 1444 (\$2, N) - 08/27/12	2,972,415	12	13		4,967,337	105,441	1,198,597	1,455,689	500	675	2,769,421	73	83	612,072	1,419,103	97,265	2,680,694	70	80	364,030		75,617,375	2.95
9/8/2012	56,941,761	1440 (\$2, N); 1458 (\$3, N); 1459 (\$5, N) - 09/03/12	3,005,564	14	15		5,112,132	106,959	1,185,494	1,179,003	875	200	3,140,536	93	105	665,392	1,412,279	99,861	3,002,910	90	100	395,287		76,247,178	2.97
9/15/2012	56,302,875	1452 (\$3, N) - 09/10/12	2,999,894	16	17		4,785,209	95,720	1,118,519	894,412	225	200	2,684,227	120	12	580,869	1,290,478	90,795	3,373,296	110	125	417,470	2,526,342	77,160,105	3.01
9/22/2012	54,974,438	1460 (\$1, N); 1461 (\$5, N) - 09/17/12	2,986,898	18	19		4,611,684	89,173	1,091,440	986,264	225	325	1,874,336	15	12	452,082	1,258,191	86,390	4,122,790	149	174	479,344	2,531,686	75,544,715	2.94
9/29/2012	54,606,674	1462 (\$2, N); 1472 (\$10, N) - 09/24/12	3,047,519	20	21		4,708,250	90,752	1,077,739	1,313,257	475	625	1,884,366	14	21	452,334	1,278,847	87,211	3,779,359	200	40	445,091	2,297,966	75,069,364	2.92
10/6/2012	59,223,327	1464 (\$5, N) - 10/01/12	3,164,231	22	23		4,947,571	96,251	1,121,146	1,188,986	800	200	2,055,918	28	36	482,303	1,310,612	89,270	2,266,428	50	40	445,091	2,297,966	75,069,364	3.06
10/13/2012	57,075,606	1465 (\$1, N); 1466 (\$20, N) - 10/08/2012	3,133,742	24	25		4,793,793	89,663	1,074,687	865,146	225	200	2,163,099	45	53	492,614	1,261,858	84,585	2,241,120	50	60	309,684	2,128,476	75,714,073	2.95
10/20/2012	56,630,134	1467 (\$1, N); 1468 (\$5, N) - 10/15/12	3,172,820	26	27		4,959,071	88,413	1,074,980	970,100	225	325	1,984,966	61	12	466,730	1,296,602	84,868	2,447,518	70	80	328,436	2,124,439	75,629,077	2.95
10/27/2012	55,789,743	1469 (\$2, N); 1470 (\$10, N) - 10/22/2012	3,204,694	28	29		5,550,567	96,242	1,063,201	1,226,578	450	600	1,778,725	13	21	430,528	1,381,019	91,618	2,914,062	90	100	371,273	2,021,684	75,919,933	2.96
11/3/2012	58,142,777	1503 (\$5, N) - 10/29/2012	3,392,650	30	31		5,501,964	101,742	1,078,593	860,073	200	225	1,950,117	27	32	462,385	1,393,099	93,773	3,466,242	110	124	424,170	1,913,200	78,780,785	3.07
11/10/2012	57,484,804	1475 (\$1, N); 1476 (\$3, N) - 11/05/2012	3,061,999	32	4		5,466,924	100,767	1,083,928	837,666	200	200	1,783,099	12	13	430,343	1,402,194	94,451	4,246,246	143	168	491,538	1,861,718	78,347,676	3.05
11/17/2012	55,805,228	1477 (\$2, N); 1478 (\$5, N) - 11/12/2012	2,599,190	5	6		5,248,059	91,989	1,059,723	920,319	225	300	1,841,571	19	26	440,783	1,345,121	88,391	5,638,425	185	214	615,323	1,771,812	77,465,933	3.02
11/24/2012	61,331,977	1394 (\$50, N) - 11/19/2012	2,768,876	7	8		5,086,879	91,989	1,021,878	883,407	425	200	2,003,365	33	41	472,723	1,300,693	85,037	10,768,045	250	325	1,053,006	1,637,536	88,504,830	3.45
12/1/2012	58,420,598	0	3,304,053	9	10		5,123,778	97,511	1,086,916	925,805	225	275	2,358,380	49	12	533,175	1,319,684	92,240	43,264,700	550	40	2,894,606	1,797,096	121,218,541	4.72
12/8/2012	62,489,745	1479 (\$1, N); 1485 (\$5, N) - 12/03/12	2,971,837	11	12		5,374,747	101,479	1,129,990	1,359,739	425	575	1,861,503	13	20	445,171	1,391,477	94,879	2,832,293	50	40	362,145	1,704,896	82,119,900	3.20
12/15/2012	59,661,880	0	3,087,087	13	14		5,221,374	98,173	1,104,769	1,928,422	775	1,000	1,933,357	27	35	456,193	1,398,647	88,811	2,808,938	50	40	364,704	1,574,508	79,726,862	3.11
12/22/2012	63,556,886	1481 (\$1, N); 1482 (\$2, N); 1483 (\$5, N) - 12/17/12	3,076,409	15	16		5,170,946	94,116	1,108,894	1,415,548	1,250	200	1,774,922	12	12	431,471	1,385,861	87,012	2,658,349	50	40	349,278	1,531,847	82,641,539	3.22
12/29/2012	63,547,886	0	2,869,329	17	18		4,868,470	90,224	1,041,264	922,869	200	225	1,670,747	18	25	400,587	1,289,758	79,651	2,413,294	50	40	324,222	1,389,460	80,907,760	3.15
1/5/2013	60,452,721	1484 (\$5, N) - 12/31/12	2,962,822	19	20		5,157,831	97,210	1,098,429	1,363,512	350	500	1,865,613	30	39	443,570	1,396,145	87,787	2,524,666	50	60	339,142	1,496,322	79,285,768	3.09
1/12/2013	58,862,997	1386 (\$2, N); 1536 (\$10, N) - 01/07/2013	2,588,023	4	5		4,474,232	92,872	1,079,444	1,622,926	700	900	2,036,427	47	55	471,998	1,345,510	81,625	2,755,940	70	80	349,383	1,480,788	77,742,164	3.03
1/19/2013	58,494,057	01/14/2013; 1538 (\$3, N) - 01/17/2013;	2,670,967	6	7		5,115,846	99,182	1,069,099	906,490	200	225	2,214,850	62	70	498,541	1,374,543	87,921	3,323,356	90	100	408,226	1,488,984	77,752,061	3.03
1/26/2013	57,871,744	0	2,733,016	8	9		4,936,726	91,918	1,047,379	1,178,148	325	475	2,367,780	80	89	526,051	1,401,635	87,842	3,808,150	110	130	454,194	1,460,376	77,964,959	3.04
2/2/2013	61,846,715	1489 (\$2, N); 1486 (\$20, N) - 01/28/2013	2,754,143	10	11		5,220,197	96,971	1,066,170	1,109,445	650	200	1,731,470	12	13	423,745	1,460,770	96,289	5,037,974	151	176	570,151	1,465,010	82,879,050	3.23
2/9/2013	70,374,906	1510 (\$5, N) - 2/4/13; 1537 (\$3, N) - 2/5/13	2,893,143	12	13		5,374,541	101,660	1,110,298	1,053,776	225	325	1,785,080	19	12	435,112	1,483,017	96,782	4,830,224	208	40	551,530	1,468,476	91,558,544	3.57
2/16/2013	71,002,438	1451 (\$3, N); 1453 (\$5, N) - 2/11/13	2,910,257	14	15		5,397,708	99,470	1,091,337	1,430,815	475	650	1,770,362	13	20	431,516	1,502,480	92,250	2,752,192	50	60	366,358	1,450,452	90,297,635	3.52
2/23/2013	71,203,934	1496 (\$1, N); 1399 (\$2, N); 1495 (\$5, N) - 2/18/13; 1450 (\$2, N) - 2/22/13	2,716,839	16	4		5,343,246	99,957	1,083,596	1,849,824	850	1,100	1,759,469	26	12	429,347	1,473,358	91,116	3,067,388	70	80	394,142	1,421,708	90,933,923	3.54
3/2/2013	74,551,567	1474 (\$2, N) - 2/25/13	2,667,146	5	6		5,664,284	109,000	1,111,025	954,451	200	225	1,801,090	19	19	443,330	1,627,457	108,647	3,852,426	90	103	475,464	1,464,008	94,829,894	3.69
3/9/2013	75,360,138	1427 (\$1, N); 1497 (\$2, N); 1498 (\$5, N) - 3/4/13	2,711,613	7	8		5,687,827	106,680	1,111,266	1,024,080	325	200	1,914,669	26	33	465,588	1,592,687	105,438	4,739,852	123	150	558,580	1,429,484	96,807,901	3.77
3/16/2013	70,065,528	0	2,704,692	9	10		5,296,558	99,894	1,069,350	982,380	225	325	1,796,816	41	12	443,221	1,497,910	96,023	6,065,856	183	216	682,736	1,320,128	92,121,091	3.59
3/23/2013	70,137,284	1499 (\$1, N); 1500 (\$5, N) - 3/18/13	2,572,262	4	4		5,315,709	100,840	1,072,767	859,810	200	200	1,808,889	13	20	449,461	1,524,260	99,002	12,246,011	260	320	1,227,175	1,432,838	98,846,308	3.85
3/30/2013	68,758,522	0	2,606,382	5	6		5,301,324	99,384	1,075,802	995,045	225	300	1,902,475	26	34	458,139	1,499,789	95,154	2,681,422	40	50	363,584	1,518,592	87,355,613	3.40
4/6/2013	73,270,054	1501 (\$2, N); 1506 (\$3, N); 1471 (\$5, N) - 4/1/13	2,599,044	7	4		5,604,670	105,096	1,113,516	1,442,797	450	625	2,176,834	42	50	503,159	1,610,636	103,097	2,793,981	40	50	377,717	1,618,445	93,319,046	3.63
4/13/2013	64,738,900	0	2,446,701	5	6		5,338,308	100,575	1,079,753	1,245,341	825	200	2,326,285	56	66	524,253	1,550,435	92,346	3,014,428	60	70	401,719	1,577,650	84,436,693	3.29
4/20/2013	63,252,072	1491 (\$1, N); 1505 (\$5, N); 1473 (\$5, N) - 4/15/13	2,818,780	5	5.25	401.661	5,239,302	99,844	1,060,275	903,889	200	225	2,467,440	74	83	541,931	1,479,524	91,413	3,254,662	80	95	416,958	1,469,404	83,497,155	3.25
4/27/2013	62,766,647	0	2,475,171	6	5.75	348.710	5,041,109	96,530	1,032,823	1,159,837	325	475	2,891,419	92	103	606,592	1,436,459	88,843	4,093,281	116	140	493,873	1,398,242	83,929,535	3.27
5/4/2013	66,251,082	1457 (\$2, N); 1539 (\$3, N); 1508 (\$5, N); 1511 (\$20, N) - 4/29/13; 1540 (\$3, N) - 5/2/13; 1545 (\$5, N) - 5/3/13	2,580,370	6	6.25	370.834	5,346,225	100,906	1,069,045	1,558,065	625	825	3,324,473	114	126	685,861	1,506,050	97,318							