



*WEEKLY SALES SUMMARY*

Unaudited

**Week Ending: 5/21/2016**

Texas Lottery Commission  
Fiscal Year to Date Sales Comparison  
Unaudited

Through the Week Ending 5/21/2016 (38 Weeks)

Sales by Game	FY 2014 *	FY 2015 **	FY 2016	\$ Change		% Change	
				FY 2016 to FY 2014	FY 2016 to FY 2015	FY 2016 to FY 2014	FY 2016 to FY 2015
Scratch Tickets	\$ 2,432,610,261	\$ 2,551,645,213	\$ 2,711,469,969	\$ 278,859,708	\$ 159,824,756	11.5%	6.3%
Lotto Texas	101,669,775	89,113,958	90,011,205	-11,658,570	897,247	-11.5%	1.0%
Lotto Extra	13,753,493	13,892,970	15,787,891	2,034,398	1,894,921	14.8%	13.6%
Pick 3	186,201,761	185,510,463	186,603,323	401,562	1,092,860	0.2%	0.6%
Pick 3 Sum It Up	3,661,521	3,773,937	3,830,077	168,557	56,140	4.6%	1.5%
Cash Five	38,775,101	36,869,010	33,833,495	-4,941,606	-3,035,515	-12.7%	-8.2%
Texas Two Step	40,371,596	39,729,942	40,161,754	-209,842	431,812	-0.5%	1.1%
Mega Millions	153,044,806	112,660,289	92,642,619	-60,402,187	-20,017,670	-39.5%	-17.8%
Megaplier	32,769,909	26,276,590	23,610,075	-9,159,834	-2,666,515	-28.0%	-10.1%
Daily 4	61,197,107	63,684,623	65,896,402	4,699,295	2,211,779	7.7%	3.5%
Daily 4 Sum It Up	3,782,189	3,715,551	3,501,246	-280,943	-214,305	-7.4%	-5.8%
Powerball	154,606,994	162,182,915	376,923,113	222,316,119	214,740,198	143.8%	132.4%
Power Play	18,629,642	20,195,085	42,154,398	23,524,756	21,959,313	126.3%	108.7%
All or Nothing	35,158,549	28,280,252	22,631,954	-12,526,595	-5,648,298	-35.6%	-20.0%
Monopoly	- <sup>1</sup>	2,656,370	-	-	-2,656,370	-	-100.0%
Texas Triple Chance	-	-	18,545,822	18,545,822	18,545,822	-	-
<b>Total</b>	<b>\$ 3,276,232,704</b>	<b>\$ 3,340,187,167</b>	<b>\$ 3,727,603,342</b>	<b>\$ 451,370,639</b>	<b>\$ 387,416,175</b>	<b>13.8%</b>	<b>11.6%</b>

\* 2 extra days

\*\* 1 extra day

<sup>1</sup> Monopoly sales were suspended after draw on 12/12/14

Texas Lottery Commission  
Fiscal Year to Date Cumulative Average Sales Comparison  
Unaudited

Through the Week Ending 5/21/2016 (38 Weeks)

Sales by Game	FY 2014	FY 2015	FY 2016
Scratch Tickets	\$ 9,145,151	\$ 9,628,850	\$ 10,270,720
Lotto Texas	382,217	336,279	340,952
Lotto Extra	51,705	52,426	59,803
Pick 3	700,007	700,039	706,831
Pick 3 Sum It Up	13,765	14,241	14,508
Cash Five	145,771	139,128	128,157
Texas Two Step	151,773	149,924	152,128
Mega Millions	575,356	425,133	350,919
Megaplier	123,195	99,157	89,432
Daily 4	230,064	240,319	249,608
Daily 4 Sum It Up	14,219	14,021	13,262
Powerball	581,229	612,011	1,427,739
Power Play	70,036	76,208	159,676
All or Nothing	132,175	106,718	85,727
Monopoly	- **	48,298	-
Texas Triple Chance	-	- *	77,924
<b>Total</b>	<b>\$ <u>12,316,664</u></b>	<b>\$ <u>12,642,753</u></b>	<b>\$ <u>14,127,384</u></b>

thru 5/24/2014  
266 days

\*\*

thru 5/23/2015  
265 days  
55 days

\*

thru 5/21/2016  
264 days  
238 days

Texas Lottery Commission  
Fiscal Year Over Year Change in Sales  
Unaudited  
FY 2016 Compared to FY 2015

			SCRATCH TICKETS				DRAW GAMES				TOTAL SALES			
FY 2016			% change -				% change -				% change -			
Week	Week	Ending	FY 2016	FY 2015	Difference	Cumulative Sales	FY 2016	FY 2015	Difference	Cumulative Sales	FY 2016	FY 2015	Difference	Cumulative Sales
1	9/5/2015 *		\$49,534,249	\$54,911,801	(\$5,377,552)	-9.8%	\$17,091,724	\$17,482,488	(\$390,765)	-2.2%	\$66,625,973	\$72,394,289	(\$5,768,317)	-8.0%
2	9/12/2015		\$61,566,291	\$61,436,533	\$129,758	0.2%	\$20,630,922	\$19,097,081	\$1,533,841	8.0%	\$82,197,213	\$80,533,614	\$1,663,599	2.1%
3	9/19/2015		\$63,530,657	\$60,959,234	\$2,571,423	4.2%	\$20,327,253	\$20,567,894	(\$240,641)	-1.2%	\$83,857,910	\$81,527,128	\$2,330,782	2.9%
4	9/26/2015		\$61,731,400	\$59,710,056	\$2,021,344	3.4%	\$22,252,290	\$19,920,828	\$2,331,462	11.7%	\$83,983,690	\$79,630,884	\$4,352,806	5.5%
5	10/3/2015		\$67,048,415	\$62,119,854	\$4,928,561	7.9%	\$25,436,791	\$18,531,421	\$6,905,370	37.3%	\$92,485,206	\$80,651,275	\$11,833,931	14.7%
6	10/10/2015		\$66,049,706	\$61,253,665	\$4,796,041	7.8%	\$18,138,977	\$18,985,332	(\$846,355)	-4.5%	\$84,188,683	\$80,238,997	\$3,949,687	4.9%
7	10/17/2015		\$65,073,593	\$60,230,048	\$4,843,545	8.0%	\$17,776,414	\$19,538,402	(\$1,761,988)	-9.0%	\$82,850,007	\$79,768,450	\$3,081,558	3.9%
8	10/24/2015		\$64,087,437	\$62,384,112	\$1,703,325	2.7%	\$18,450,464	\$21,475,643	(\$3,025,179)	-14.1%	\$82,537,901	\$83,859,755	(\$1,321,854)	-1.6%
9	10/31/2015		\$66,025,374	\$63,404,713	\$2,620,661	4.1%	\$19,568,150	\$23,568,817	(\$4,000,668)	-17.0%	\$85,593,524	\$86,973,530	(\$1,380,007)	-1.6%
10	11/7/2015		\$68,137,192	\$65,486,719	\$2,650,473	4.0%	\$20,398,351	\$23,749,032	(\$3,350,681)	-14.1%	\$88,535,543	\$89,235,751	(\$700,208)	-0.8%
11	11/14/2015		\$65,449,428	\$61,745,521	\$3,703,907	6.0%	\$20,169,382	\$17,449,604	\$2,719,779	15.6%	\$85,618,810	\$79,195,125	\$6,423,686	8.1%
12	11/21/2015		\$68,364,421	\$66,353,583	\$2,010,838	3.0%	\$17,174,606	\$17,108,084	\$66,522	0.4%	\$85,539,027	\$83,461,667	\$2,077,360	2.5%
13	11/28/2015		\$61,091,628	\$60,471,184	\$620,444	1.0%	\$17,168,993	\$17,303,129	(\$134,136)	-0.8%	\$78,260,621	\$77,774,313	\$486,309	0.6%
14	12/5/2015		\$67,830,827	\$66,648,696	\$1,182,131	1.8%	\$19,252,418	\$18,862,425	\$389,994	2.1%	\$87,083,245	\$85,511,121	\$1,572,125	1.8%
15	12/12/2015		\$68,324,452	\$65,708,630	\$2,615,822	4.0%	\$19,529,408	\$18,649,598	\$879,811	4.7%	\$87,853,860	\$84,358,228	\$3,495,633	4.1%
16	12/19/2015		\$71,041,258	\$68,551,298	\$2,489,960	3.6%	\$20,824,840	\$19,051,100	\$1,773,740	9.3%	\$91,866,098	\$87,602,398	\$4,263,700	4.9%
17	12/26/2015		\$78,125,965	\$73,858,618	\$4,267,347	5.8%	\$22,586,417	\$20,006,357	\$2,580,061	12.9%	\$100,712,382	\$93,864,975	\$6,847,408	7.3%
18	1/2/2016		\$76,712,975	\$67,733,268	\$8,979,707	13.3%	\$27,972,880	\$21,355,167	\$6,617,714	31.0%	\$104,685,855	\$89,088,435	\$15,597,421	17.5%
19	1/9/2016		\$77,136,541	\$64,745,641	\$12,390,900	19.1%	\$127,289,478	\$22,265,347	\$105,024,131	471.7%	\$204,426,019	\$87,010,988	\$117,415,031	134.9%
20	1/16/2016		\$73,858,865	\$64,015,166	\$9,843,699	15.4%	\$140,104,126	\$23,694,617	\$116,409,509	491.3%	\$213,962,991	\$87,709,783	\$126,253,208	143.9%
21	1/23/2016		\$70,665,700	\$62,569,156	\$8,096,544	12.9%	\$20,781,745	\$19,765,442	\$1,016,303	5.1%	\$91,447,445	\$82,334,598	\$9,112,847	11.1%
22	1/30/2016		\$71,051,685	\$68,001,588	\$3,050,097	4.5%	\$20,433,401	\$22,877,000	(\$2,443,600)	-10.7%	\$91,485,086	\$90,878,588	\$606,498	0.7%
23	2/6/2016		\$78,458,428	\$75,677,650	\$2,780,778	3.7%	\$21,274,800	\$31,662,209	(\$10,387,409)	-32.8%	\$99,733,228	\$107,339,859	(\$7,606,631)	-7.1%
24	2/13/2016		\$80,754,850	\$75,368,712	\$5,386,138	7.1%	\$21,391,919	\$46,091,747	(\$24,699,828)	-53.6%	\$102,146,769	\$121,460,459	(\$19,313,690)	-15.9%
25	2/20/2016		\$80,078,271	\$74,833,076	\$5,245,195	7.0%	\$21,911,382	\$19,865,172	\$2,046,211	10.3%	\$101,989,653	\$94,698,248	\$7,291,406	7.7%
26	2/27/2016		\$78,832,217	\$69,918,013	\$8,914,204	12.7%	\$22,823,086	\$19,735,352	\$3,087,734	15.6%	\$101,655,303	\$89,653,365	\$12,001,938	13.4%
27	3/5/2016		\$80,019,524	\$74,848,961	\$5,170,563	6.9%	\$23,146,906	\$19,946,068	\$3,200,838	16.0%	\$103,166,430	\$94,795,029	\$8,371,401	8.8%
28	3/12/2016		\$78,524,214	\$70,079,409	\$8,444,805	12.1%	\$19,311,625	\$20,044,562	(\$732,937)	-3.7%	\$97,835,839	\$90,123,971	\$7,711,868	8.6%
29	3/19/2016		\$75,446,960	\$70,368,686	\$5,078,274	7.2%	\$18,001,000	\$18,480,795	(\$479,795)	-2.6%	\$93,447,960	\$88,849,481	\$4,598,479	5.2%
30	3/26/2016		\$75,293,759	\$70,280,600	\$5,013,159	7.1%	\$18,553,964	\$17,595,205	\$958,760	5.4%	\$93,847,723	\$87,875,805	\$5,971,919	6.8%
31	4/2/2016		\$79,316,221	\$74,369,952	\$4,946,269	6.7%	\$19,482,563	\$18,378,917	\$1,103,646	6.0%	\$98,798,784	\$92,748,869	\$6,049,915	6.5%
32	4/9/2016		\$74,560,898	\$67,416,817	\$7,144,081	10.6%	\$20,100,629	\$18,594,844	\$1,505,785	8.1%	\$94,661,527	\$86,011,661	\$8,649,866	10.1%
33	4/16/2016		\$74,056,586	\$68,393,316	\$5,663,270	8.3%	\$20,677,413	\$18,104,632	\$2,572,781	14.2%	\$94,733,999	\$86,497,948	\$8,236,051	9.5%
34	4/23/2016		\$73,110,080	\$70,078,182	\$3,031,898	4.3%	\$20,313,339	\$17,957,150	\$2,356,189	13.1%	\$93,423,419	\$88,035,332	\$5,388,087	6.1%
35	4/30/2016		\$73,448,019	\$71,744,718	\$1,703,301	2.4%	\$22,666,626	\$18,961,113	\$3,705,513	19.5%	\$96,114,645	\$90,705,831	\$5,408,814	6.0%
36	5/7/2016		\$77,593,399	\$73,415,978	\$4,177,421	5.7%	\$33,262,968	\$20,210,341	\$13,052,628	64.6%	\$110,856,367	\$93,626,319	\$17,230,049	18.4%
37	5/14/2016		\$75,263,676	\$72,152,109	\$3,111,567	4.3%	\$20,250,149	\$20,362,774	(\$112,626)	-0.6%	\$95,513,825	\$92,514,883	\$2,998,942	3.2%
38	5/21/2016		\$74,274,808	\$70,399,950	\$3,874,858	5.5%	\$19,605,983	\$21,246,276	(\$1,640,294)	-7.7%	\$93,880,791	\$91,646,226	\$2,234,565	2.4%
39	5/28/2016			\$68,547,554				\$22,227,946				\$90,775,500		
40	6/4/2016			\$71,254,006				\$20,739,703				\$91,993,709		
41	6/11/2016			\$65,878,375				\$17,216,403				\$83,094,778		
42	6/18/2016			\$66,658,742				\$17,340,531				\$83,999,273		

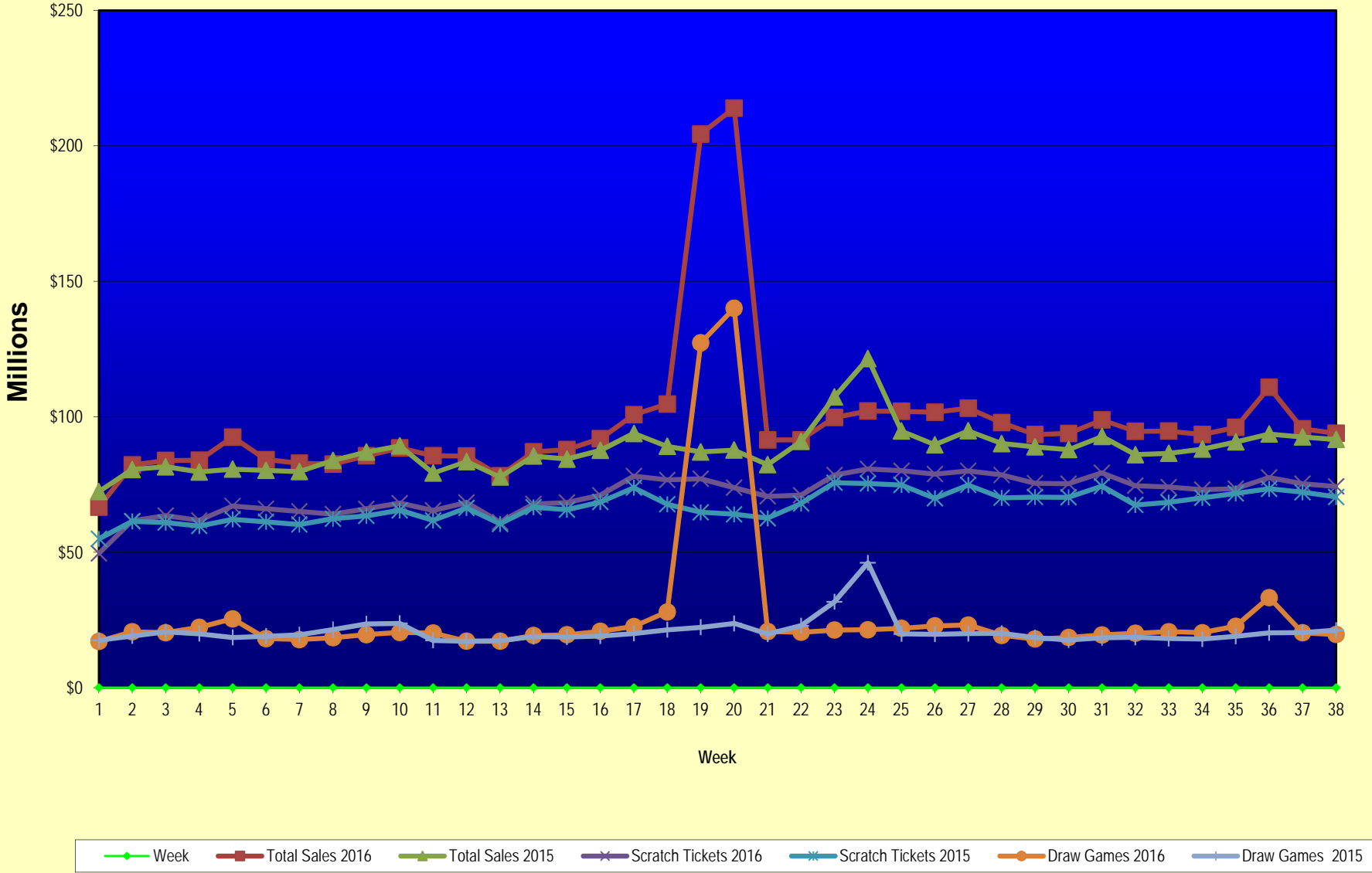
Texas Lottery Commission  
Fiscal Year Over Year Change in Sales  
Unaudited  
FY 2016 Compared to FY 2015

			SCRATCH TICKETS				DRAW GAMES				TOTAL SALES			
FY 2016			FY 2016	FY 2015	Difference	% change - Cumulative Sales	FY 2016	FY 2015	Difference	% change - Cumulative Sales	FY 2016	FY 2015	Difference	% change - Cumulative Sales
Week	Week	Ending												
43	6/25/2016			\$65,282,276				\$16,873,368				\$82,155,644		
44	7/2/2016			\$67,757,752				\$18,007,540				\$85,765,292		
45	7/9/2016			\$64,718,254				\$18,203,985				\$82,922,239		
46	7/16/2016			\$64,957,977				\$18,792,785				\$83,750,762		
47	7/23/2016			\$62,541,241				\$18,229,965				\$80,771,206		
48	7/30/2016			\$66,468,460				\$17,742,489				\$84,210,949		
49	8/6/2016			\$62,412,598				\$17,331,374				\$79,743,972		
50	8/13/2016			\$62,089,389				\$17,501,599				\$79,590,988		
51	8/20/2016			\$62,437,148				\$17,779,458				\$80,216,606		
52	8/27/2016			\$61,403,206				\$18,529,560				\$79,932,766		
	8/31/2016 **			\$17,309,621				\$3,279,958				\$20,589,579		
Total thru Current Week			\$2,711,469,969	\$2,551,645,213	\$159,824,756	6.3%	\$1,016,133,373	\$788,541,954	\$227,591,419	28.9%	\$3,727,603,342	\$3,340,187,167	\$387,416,175	11.6%
Fiscal Year Total			\$2,711,469,969	\$3,481,361,812			\$1,016,133,373	\$1,048,338,613			\$3,727,603,342	\$4,529,700,425		

\* FY 16 includes 5 days; FY 15 includes 6 days

\*\* FY 16 includes 4 days; FY 15 includes 2 days

### Texas Lottery Commission Fiscal Year Over Year Change in Sales



Note: Week 1 is not a full week of sales as this report is prepared on a Fiscal Year basis.

Texas Lottery Commission  
Scratch Tickets by Price Point  
Sales, Prize Expense, Sales Contribution and Payout Percentage With Year Over Year Changes  
Unaudited

Fiscal Year	Price Point	# of Active Games	FY Sales	% of Scratch Ticket Sales	Year over Year Change in Sales	FY Prize Expense	Year over Year Change in Prize Expense	FY Sales Contribution	Year over Year Change in Contribution	Average Prize Payout %	Year over Year Change in Payout %
2015	\$1.00	22	126,037,119	4.9%		76,463,797		49,573,322		60.7%	1.3%
Through	\$2.00	33	260,770,052	10.2%		171,339,462		89,430,590		65.7%	1.3%
5/23/2015	\$3.00	14	263,068,467	10.3%		173,446,526		89,621,941		65.9%	0.5%
	\$5.00	48	788,629,885	30.9%		535,776,028		252,853,857		67.9%	0.0%
	\$10.00	17	531,933,320	20.8%		374,028,767		157,904,553		70.3%	0.0%
	\$20.00	11	458,345,620	18.0%		343,649,242		114,696,378		75.0%	0.1%
	\$50.00	4	122,860,750	4.8%		95,497,702		27,363,048		77.7%	0.1%
<b>Total</b>		<b>149</b>	<b>\$2,551,645,213</b>			<b>\$1,770,201,524</b>		<b>\$781,443,689</b>		<b>69.4%</b>	<b>0.7%</b>
2016	\$1.00	19	120,108,165	4.4%		72,418,270		47,689,895		60.3%	-0.4%
thru	\$2.00	33	270,898,672	10.0%		176,640,177		94,258,495		65.2%	-0.4%
5/21/2016	\$3.00	13	202,454,307	7.5%		133,353,417		69,100,890		65.9%	-0.1%
	\$5.00	55	893,040,815	32.9%		606,737,070		286,303,745		67.9%	0.0%
	\$10.00	18	541,634,100	20.0%		379,665,821		161,968,279		70.1%	-0.2%
	\$20.00	12	548,081,760	20.2%		410,748,058		137,333,702		74.9%	0.0%
	\$50.00	4	135,252,150	5.0%		105,201,182		30,050,968		77.8%	0.0%
<b>Total</b>		<b>154</b>	<b>\$2,711,469,969</b>			<b>\$1,884,763,994</b>		<b>\$826,705,975</b>		<b>69.5%</b>	<b>0.1%</b>
Variance	\$1.00	-3	-5,928,954		-4.7%	-4,045,527	-5.3%	-1,883,427	-3.8%	-0.37%	
2016 to	\$2.00	0	10,128,620		3.9%	5,300,715	3.1%	4,827,905	5.4%	-0.50%	
2015	\$3.00	-1	-60,614,160		-23.0%	-40,093,110	-23.1%	-20,521,050	-22.9%	-0.06%	
	\$5.00	7	104,410,930		13.2%	70,961,041	13.2%	33,449,889	13.2%	0.00%	
	\$10.00	1	9,700,780		1.8%	5,637,055	1.5%	4,063,725	2.6%	-0.22%	
	\$20.00	1	89,736,140		19.6%	67,098,816	19.5%	22,637,324	19.7%	-0.03%	
	\$50.00	0	12,391,400		10.1%	9,703,480	10.2%	2,687,920	9.8%	0.05%	
<b>Total</b>		<b>5</b>	<b>\$159,824,756</b>		<b>6.3%</b>	<b>\$114,562,469</b>	<b>6.5%</b>	<b>\$45,262,287</b>	<b>5.8%</b>	<b>0.14%</b>	

Notes - Scratch Ticket Variances

Texas Lottery Commission  
Scratch Tickets by Price Point  
Sales, Prize Expense, Sales Contribution and Payout Percentage With Year Over Year Changes  
Unaudited

			FY 2016		FY 2015	Difference
Sales	\$1 - \$5		\$1,486,501,959		\$1,438,505,523	\$47,996,436
Prize Exp.	\$1 - \$5		\$989,148,933		\$957,025,814	\$32,123,119
Sales Cont.	\$1 - \$5		\$497,353,026		\$481,479,709	\$15,873,317
Prize Exp. %	\$1 - \$5		66.5%		66.5%	0.0%
			FY 2016		FY 2015	Difference
Sales	\$10 - \$50		\$1,224,968,010		\$1,113,139,690	\$111,828,320
Prize Exp.	\$10 - \$50		\$895,615,061		\$813,175,711	\$82,439,350
Sales Cont.	\$10 - \$50		\$329,352,949		\$299,963,979	\$29,388,970
Prize Exp. %	\$10 - \$50		73.1%		73.1%	0.1%
			FY 2016		FY 2015	Difference
Sales	Scratch		\$2,711,469,969		\$2,551,645,213	\$159,824,756
Prize Exp.	Scratch		\$1,884,763,994		\$1,770,201,524	\$114,562,469
Sales Cont.	Scratch		\$826,705,975		\$781,443,689	\$45,262,287
Prize Exp. %	Scratch		69.5%		69.4%	0.1%

			FY 2016		FY 2015	Difference
Sales	\$1 - \$10		\$2,028,136,059		\$1,970,438,843	\$57,697,216
Prize Exp.	\$1 - \$10		\$1,368,814,754		\$1,331,054,580	\$37,760,174
Sales Cont.	\$1 - \$10		\$659,321,305		\$639,384,263	\$19,937,042
Prize Exp. %	\$1 - \$10		67.5%		67.6%	-0.1%
			FY 2016		FY 2015	Difference
Sales	\$20 - \$50		\$683,333,910		\$581,206,370	\$102,127,540
Prize Exp.	\$20 - \$50		\$515,949,240		\$439,146,944	\$76,802,296
Sales Cont.	\$20 - \$50		\$167,384,670		\$142,059,426	\$25,325,244
Prize Exp. %	\$20 - \$50		75.5%		75.6%	-0.1%
			FY 2016		FY 2015	Difference
Sales	Scratch		\$2,711,469,969		\$2,551,645,213	\$159,824,756
Prize Exp.	Scratch		\$1,884,763,994		\$1,770,201,524	\$114,562,469
Sales Cont.	Scratch		\$826,705,975		\$781,443,689	\$45,262,287
Prize Exp. %	Scratch		69.5%		69.4%	0.1%



Texas Lottery Commission  
**Weekly Sales Summary**  
**& Comparison to Previous Week**  
 Unaudited

	Week Ending 5/21/2016	% of Sales	Week Ending 5/14/2016	% of Sales	\$ change	% change
	<u>THIS WEEK</u>		<u>LAST WEEK</u>			
Total Sales	<u>\$93,880,791</u>		<u>\$95,513,825</u>		<u>-\$1,633,034</u>	-1.71%
Scratch Tickets	<u>\$74,274,808</u>	79.1%	<u>\$75,263,676</u>	78.8%	<u>-\$988,868</u>	-1.31%
Lotto	\$2,124,399	2.3%	\$2,099,014	2.2%	\$25,385	1.21%
Lotto Extra	\$400,183	0.4%	\$393,023	0.4%	\$7,160	1.82%
Pick 3	\$4,898,201	5.2%	\$5,131,497	5.4%	-\$233,296	-4.55%
Pick 3 Sum It Up	\$102,966	0.1%	\$107,835	0.1%	-\$4,869	-4.51%
Cash Five	\$856,551	0.9%	\$865,414	0.9%	-\$8,863	-1.02%
Texas Two Step	\$859,730	0.9%	\$1,767,748	1.9%	-\$908,018	-51.37%
Mega Millions	\$3,224,397	3.4%	\$2,918,731	3.1%	\$305,666	10.47%
Megaplier	\$808,317	0.9%	\$739,880	0.8%	\$68,437	9.25%
Daily 4	\$1,797,716	1.9%	\$1,837,825	1.9%	-\$40,109	-2.18%
Daily 4 Sum It Up	\$100,000	0.1%	\$105,856	0.1%	-\$5,856	-5.53%
Powerball	\$2,996,474	3.2%	\$2,878,645	3.0%	\$117,829	4.09%
Power Play	\$462,213	0.5%	\$438,710	0.5%	\$23,503	5.36%
All or Nothing	\$570,534	0.6%	\$560,384	0.6%	\$10,150	1.81%
Texas Triple Chance	\$404,302	0.4%	\$405,588	0.4%	-\$1,286	-0.32%
Total Draw Game Sales	<u>\$19,605,983</u>		<u>\$20,250,149</u>		<u>-\$644,166</u>	-3.18%

\* Totals may not sum due to rounding.

Texas Lottery Commission  
Weekly Sales Summary  
Unaudited

SCRATCH TICKETS  
TOP TEN SELLING GAMES

For the week ending: 5/21/2016

Rank	Price Point	Game	Sales (Millions)
1	\$ 20	100X THE CASH	\$ 4.986
2	\$ 10	\$250,000 CASH CRAZE	\$ 4.124
3	\$ 10	THE BIG MONEY SUPER TICKET	\$ 3.974
4	\$ 5	SUPER LOTERIA	\$ 3.815
5	\$ 10	CASHWORD MULTIPLIER	\$ 3.409
6	\$ 20	HIT \$1,000,000	\$ 3.322
7	\$ 5	TEXAS WILD 7'S	\$ 3.144
8	\$ 50	HIGH ROLLER CASINO ACTION	\$ 3.041
9	\$ 5	TRIPLE WINNING 7'S	\$ 2.977
10	\$ 3	BONUS CASHWORD	\$ 2.559

Texas Lottery Commission  
Prize Payout Tracking Report  
Unaudited

Through the week ending: 5/21/2016

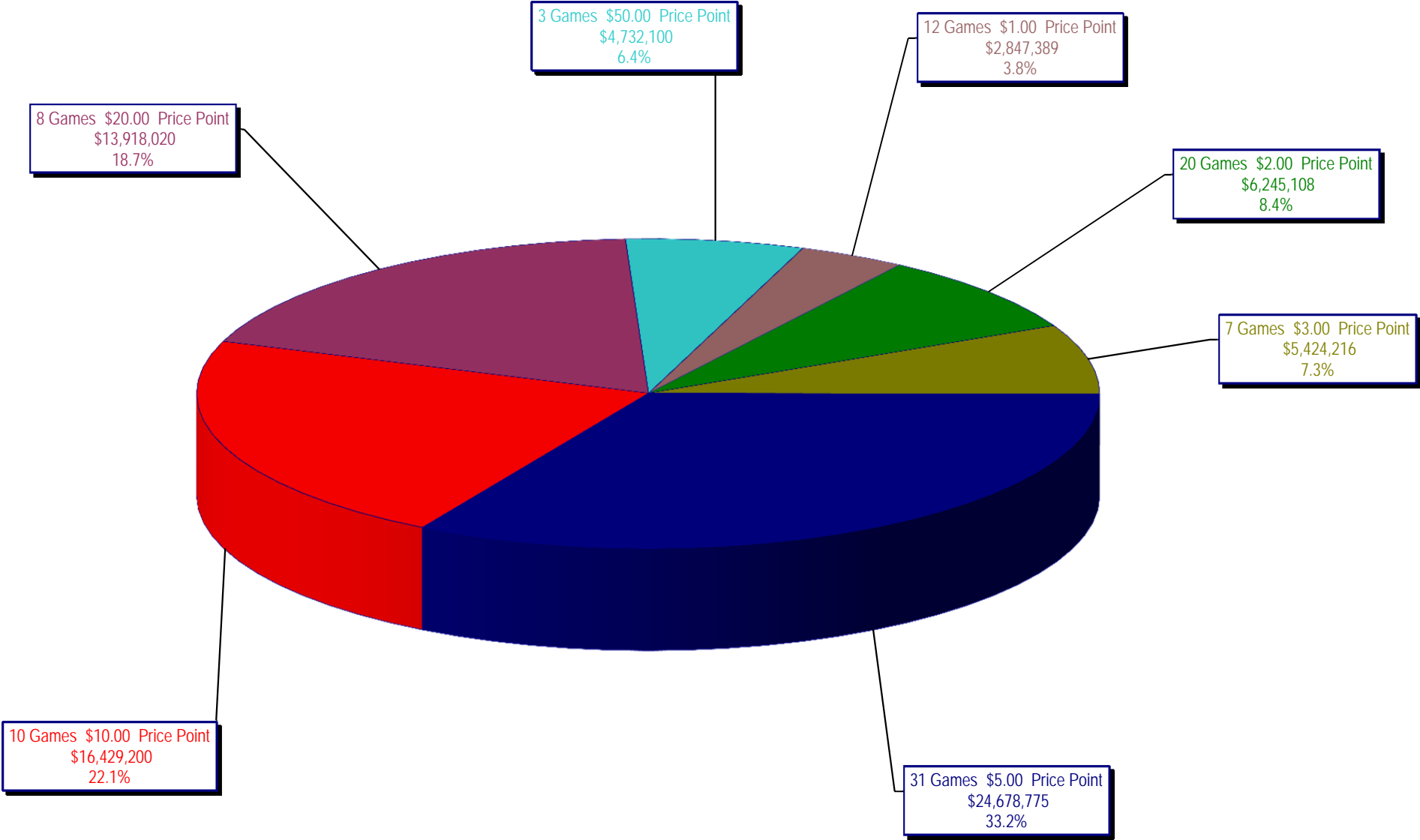
Draw Game Sales

	FY Sales Through Week Ending 5/21/2016	FY Prize Expense Through Week Ending 5/21/2016	Actual* Prize Payout	Base Payout (Prize Pool)
Lotto	\$ 90,011,205	\$ 50,958,389	56.61%	50.00%
Lotto Extra	15,787,891	8,341,322	52.83%	53.70%
Pick 3	186,603,323	93,524,410	50.12%	50.00%
Pick 3 Sum It Up	3,830,077	1,828,313	47.74%	50.00%
Cash Five	33,833,495	16,916,800	50.00%	50.00%
Texas Two Step	40,161,754	20,389,065	50.77%	50.00%
Mega Millions	92,642,619	47,362,905	51.12%	50.00%**
Megaplier	23,610,075	11,833,817	50.12%	N/A
Daily 4	65,896,402	32,054,375	48.64%	50.00%
Daily 4 Sum It Up	3,501,246	1,346,917	38.47%	50.00%
Powerball	376,923,113	188,678,421	50.06%	50.00%**
Power Play	42,154,398	21,105,840	50.07%	N/A
All or Nothing	22,631,954	12,311,434	54.40%	55.98%
Monopoly	0	(22,993)	0.00%	50.00%
Texas Triple Chance	18,545,822	11,230,710	60.56%	54.42%
<b>Totals</b>	<b>\$ 1,016,133,373</b>	<b>\$ 517,859,724</b>	<b>50.96%</b>	

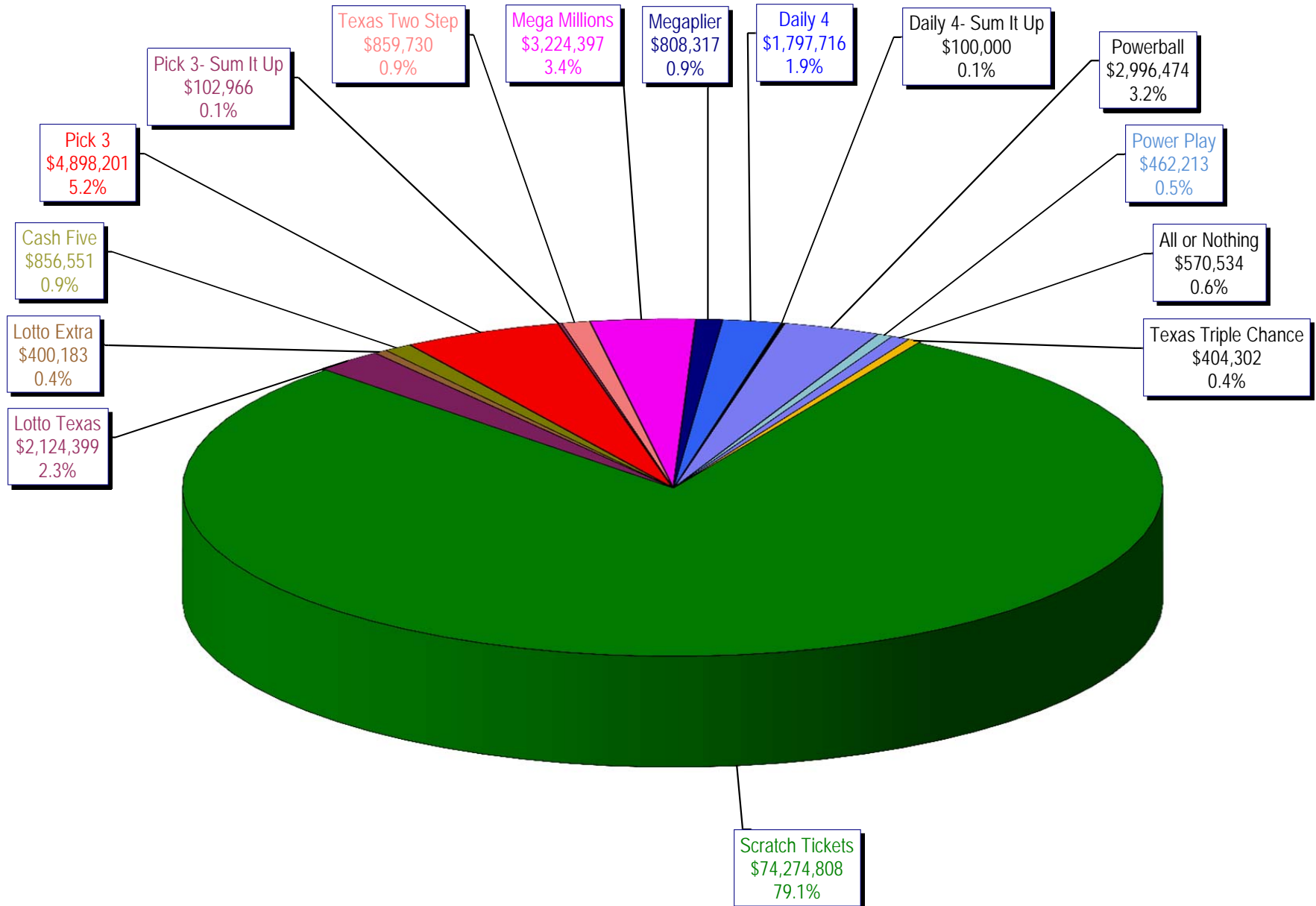
\* Before Unclaimed Prizes

\*\* Estimated; depends on # of guaranteed prizes won in Texas

Texas Lottery Commission  
Scratch Ticket Sales  
For the week ending 5/21/16  
(Unaudited)



**Texas Lottery Commission**  
**All Game Sales**  
**For the week ending 5/21/16**  
**(Unaudited)**



Texas Lottery Commission - Weekly Sales Summary for FY 2016 (Unaudited)

Week Ended	Scratch Tickets	New Games & Dates	Lotto Texas	Jackpot		Lotto Extra	Pick 3	Pick 3 Sum It Up	Cash Five	Texas Two Step	Jackpot		Mega Millions	Jackpot		Megaplier	Daily 4	Daily 4 Sum It Up	Powerball	Jackpot		Power Play	All or Nothing	Texas Triple Chance	Total	Per Cap.
				W	S						M	TH		T	F					W	S					
9/5/2015*	66,843,870	0	2,788,509	25	26	466,121	5,249,348	117,979	956,126	1,253,100	425	575	2,366,640	74	85	608,901	1,725,027	93,067	3,586,482	120	133	484,769	675,614		87,215,551	3.24
9/12/2015	61,566,291	1717 (\$1.N); 1718 (\$5.N); 1748 (\$10.N); 1696 (\$3.N) - 9/08/15	2,793,428	26.5	27.75	465,451	4,974,238	103,203	919,536	1,423,604	725	950	2,511,039	95	106	629,091	1,641,226	86,539	3,927,126	149	167	518,060	638,384		82,197,213	3.05
9/19/2015	63,530,657	0	2,845,557	28.25	29.5	475,307	4,715,566	95,242	928,275	854,109	200	225	1,817,155	15	20	487,946	1,647,829	81,483	5,082,782	185	208	639,614	656,388		83,857,910	3.11
9/26/2015	61,731,400	1720 (\$2.N); 1721 (\$5.N); 1715 (\$5.N) - 9/21/15	2,815,638	30	30.75	468,584	4,735,629	97,118	924,334	1,048,752	300	450	1,860,438	25	31	499,201	1,628,350	82,200	6,648,092	235	267	790,427	653,528		83,983,690	3.12
10/3/2015	67,048,415	0	3,034,763	31.5	32.25	502,043	4,925,789	100,522	919,217	1,347,552	600	725	2,053,673	39	47	539,290	1,662,320	88,291	8,036,576	301	40	884,785	616,594	725,376	92,485,206	3.43
10/10/2015	66,049,706	1722 (\$1.N); 1723 (\$5.N); 1711 (\$20.N) - 10/05/15	2,175,801	5	5.25	366,506	4,803,855	97,005	899,614	1,141,865	925	200	2,113,720	55	65	535,411	1,636,542	86,150	2,572,748	50	60	372,480	593,616	743,664	84,188,683	3.12
10/17/2015	65,073,593	0	2,133,286	5	5	358,076	4,629,752	92,453	876,040	824,622	200	225	2,286,703	75	84	568,477	1,576,323	79,576	2,638,956	70	80	377,157	580,870	754,124	82,850,007	3.07
10/24/2015	64,087,437	1724 (\$2.N); 1769 (\$5.N); 1726 (\$10.N) - 10/19/15	2,099,176	5.25	5.5	358,217	4,515,381	92,071	860,960	991,931	300	425	2,600,946	93	105	626,019	1,553,788	80,225	2,946,077	90	100	411,192	562,378	752,104	82,537,901	3.06
10/31/2015	66,025,374	0	2,165,101	5.75	6	368,559	4,653,961	91,360	873,751	944,275	550	200	2,945,749	117	129	695,705	1,621,009	85,560	3,327,954	110	127	455,266	573,258	766,642	85,593,524	3.18
11/7/2015	68,137,192	1727 (\$1.N); 1728 (\$2.N); 1729 (\$5.N) - 11/02/15	2,232,267	6.25	6.5	379,508	4,977,693	96,887	891,111	911,796	225	300	3,416,380	144	164	795,028	1,688,298	86,418	3,071,581	142	40	425,312	599,980	826,093	88,535,543	3.28
11/14/2015	65,449,428	0	2,185,621	6.75	7	373,102	4,726,211	93,030	870,215	1,087,101	425	575	4,139,462	180	200	938,757	1,614,727	82,536	2,437,413	50	60	357,760	574,596	688,852	85,618,810	3.18
11/21/2015	68,364,421	1730 (\$2.N); 1783 (\$2.N); 1731 (\$5.N) - 11/16/15 1778 (\$2.N) - 11/18/15	2,173,857	7.25	7.5	369,519	4,674,293	88,988	862,630	825,054	200	225	1,830,909	15	20	489,485	1,632,096	82,077	2,553,907	70	80	370,594	586,348	634,850	85,539,027	3.17
11/28/2015	61,091,628	0	2,113,171	7.75	8.25	364,947	4,523,108	87,438	825,047	904,825	300	400	1,785,419	25	31	478,828	1,591,416	82,363	2,886,666	90	100	406,251	546,614	572,902	78,260,621	2.90
12/5/2015	67,830,827	1733 (\$5.N) - 12/5/15	2,245,481	8.75	9.5	385,346	5,020,926	94,445	898,598	957,116	525	200	2,073,099	39	47	545,451	1,789,318	94,198	3,432,248	110	127	467,917	603,222	645,054	87,083,245	3.23
12/12/2015	68,324,452	1751 (\$1.N); 1780 (\$2.N); 1784 (\$5.N) - 12/07/15	2,281,004	10.25	10.75	391,281	4,980,397	94,549	877,611	815,777	225	200	2,160,601	57	66	555,974	1,746,314	86,684	3,835,044	145	164	508,111	592,212	603,850	87,853,860	3.26
12/19/2015	71,041,258	0	2,326,771	11.5	12.25	400,223	4,980,685	95,154	879,423	888,674	225	300	2,322,855	74	85	592,792	1,796,682	92,401	4,707,013	180	202	600,420	573,754	567,994	91,866,098	3.41
12/26/2015	78,125,965	1736 (\$5.N); 1740 (\$20.N) - 12/21/15 1789 (\$3.N) - 12/22/15	2,422,285	12.75	13.5	417,003	4,863,405	91,522	860,361	1,106,519	400	550	2,624,875	94	104	637,157	1,725,445	87,146	5,941,638	227	255	728,720	548,978	531,364	100,712,382	3.74
1/2/2016	76,712,975	0	2,598,993	14.25	15.25	446,634	4,857,347	95,570	883,605	857,640	200	225	3,175,442	117	130	756,602	1,731,866	91,457	10,213,886	300	334	1,168,791	559,472	535,576	104,685,855	3.88
1/9/2016	77,136,541	1738 (\$1.N); 1735 (\$2.N); 1737 (\$10.N) - 1/04/16	3,569,884	16	17	580,778	4,782,398	102,725	899,480	1,029,458	300	425	4,896,815	145	165	1,100,345	1,668,434	91,670	98,440,136	500	900	8,915,982	589,972	621,402	204,426,019	7.58
1/16/2016	73,858,865	0	3,543,250	18	19	585,402	4,666,496	105,064	901,254	834,973	200	225	2,581,249	15	22	661,350	1,658,823	94,886	112,171,706	1.5	40	11,071,288	613,248	615,138	213,962,991	7.94
1/23/2016	70,665,700	1747 (\$5.N); 1790 (\$5.N); 1786 (\$3.N) - 1/18/16	2,864,110	19.5	20.25	492,400	4,696,016	104,467	945,128	846,809	200	225	2,033,849	30	39	535,675	1,742,249	90,096	4,651,362	50	60	646,626	622,838	510,120	91,447,445	3.39
1/30/2016	71,051,685	0	2,291,772	5	5.25	405,017	4,976,880	103,912	948,507	850,282	200	225	2,106,150	48	56	559,777	1,825,583	100,694	4,470,995	75	96	639,118	647,428	507,286	91,485,086	3.39
2/6/2016	78,458,428	1700 (\$1.N); 1702 (\$5.N); 1745 (\$20.N) - 2/01/16	2,298,351	5.5	5.75	412,187	5,095,888	106,149	980,363	1,020,644	300	425	2,198,934	63	71	579,927	1,833,296	99,283	4,823,108	112	136	683,319	650,426	492,926	99,733,228	3.70
2/13/2016	80,754,850	0	2,240,742	6	6.25	405,702	5,332,774	111,268	938,662	848,340	200	225	2,236,840	80	87	592,165	1,918,261	104,613	4,856,599	157	176	684,114	643,040	478,800	102,146,769	3.79
2/20/2016	80,078,271	1677 (\$2.N); 1625 (\$5.N) - 2/15/16	2,219,682	6.5	6.75	405,997	5,261,755	112,333	922,062	1,042,317	300	425	2,348,026	94	104	612,581	1,903,450	105,785	5,158,458	189	212	714,054	637,966	466,916	101,989,653	3.78

Texas Lottery Commission - Weekly Sales Summary for FY 2016 (Unaudited)

Week Ended	Scratch Tickets	New Games & Dates	Lotto Texas	Jackpot		Lotto Extra	Pick 3	Pick 3 Sum It Up	Cash Five	Texas Two Step	Jackpot		Mega Millions	Jackpot		Megaplier	Daily 4	Daily 4 Sum It Up	Powerball	Jackpot		Power Play	All or Nothing	Texas Triple Chance	Total	Per Cap.	
				W	S						M	TH		T	F					W	S						
2/27/2016	78,832,217	0	2,219,240	7	7.25	408,736	5,046,436	106,701	906,814	1,388,361	575	750	2,482,721	114	125	639,604	1,848,625	96,548	5,807,303	236	266	793,600	624,106	454,291	101,655,303	3.77	
3/5/2016	80,019,524	1798 (\$3.N); 1796 (\$5.N) - 2/29/16	2,269,811	7.5	7.75	419,311	5,370,371	115,581	944,505	1,944,339	950	1,175	2,720,417	135	144	706,160	1,962,847	105,379	4,803,055	292	40	675,939	647,306	461,886	103,166,430	3.83	
3/12/2016	78,524,214	1746 (\$1.N); 1795 (\$2.N); 1744 (\$5.N); 1719 (\$10.N) - 3/7/16 1797 (\$10.N) - 3/9/16	2,170,297	8	8.75	403,101	5,053,423	109,902	910,388	1,366,495	1,450	200	2,226,025	157	15	593,134	1,852,906	98,700	3,014,836	50	60	463,740	613,990	434,688	97,835,839	3.63	
3/19/2016	75,446,960	0	2,172,437	9.25	10	402,218	4,900,867	102,413	890,351	841,665	200	225	1,735,447	20	25	493,521	1,790,457	95,659	3,098,598	70	80	473,822	584,322	419,224	93,447,960	3.47	
3/26/2016	75,293,759	1765 (\$2.N); 1739 (\$5.N); 1794 (\$5.N) - 3/21/16	2,203,026	10.5	11.25	407,953	4,968,753	103,551	877,783	824,560	200	200	1,791,339	30	35	505,992	1,802,025	95,644	3,463,026	90	101	517,781	581,954	410,578	93,847,723	3.48	
4/2/2016	79,316,221	0	2,122,422	11.75	5	394,135	5,261,943	110,824	894,088	935,633	225	300	1,916,857	43	50	531,849	1,817,508	100,053	3,830,324	116	135	558,131	597,500	411,296	98,798,784	3.67	
4/9/2016	74,560,898	1697 (\$1.N); 1791 (\$5.N); 1792 (\$5.N); 1753 (\$20.N) - 4/04/16	2,038,934	5.25	5.5	378,330	5,304,473	108,007	891,933	1,249,036	425	575	1,955,604	57	65	534,602	1,848,661	100,773	4,086,953	148	168	583,012	597,536	422,776	94,661,527	3.51	
4/16/2016	74,056,586	0	2,040,155	5.75	6	379,360	5,049,570	103,794	871,898	1,516,463	750	950	2,033,797	72	80	550,669	1,750,927	95,758	4,646,599	184	205	644,230	568,884	425,310	94,733,999	3.51	
4/23/2016	73,110,080	1754 (\$2.N); 1803 (\$5.N); 1756 (\$50.N) - 4/18/16	2,019,157	6.25	6.5	377,799	4,803,711	100,291	848,658	817,309	200	225	2,109,430	89	97	570,565	1,717,521	90,147	5,191,116	227	251	705,295	548,786	413,554	93,423,419	3.47	
4/30/2016	73,448,019	0	2,075,979	6.75	7	394,302	4,950,931	101,225	861,322	1,063,843	300	425	2,442,563	108	118	642,063	1,792,240	97,874	6,414,863	282	314	848,318	559,358	421,746	96,114,645	3.57	
5/7/2016	77,593,399	1689 (\$1.N); 1750 (\$5.N); 1743 (\$10.N) - 5/02/16	2,293,077	7.25	7.5	436,015	5,127,841	106,834	884,249	1,417,685	575	750	2,919,675	128	138	750,519	1,816,986	99,541	14,697,176	348	415	1,723,048	570,772	419,550	110,856,367	4.11	
5/14/2016	75,263,676	1788 (\$2.N) - 5/09/16	2,099,014	7.75	8	393,023	5,131,497	107,835	865,414	1,767,748	950	1,200	2,918,731	150	161	739,880	1,837,825	105,856	2,878,645	40	50	438,710	560,384	405,588	95,513,825	3.54	
5/21/2016	74,274,808	1708 (\$2.N); 1725 (\$3.N); 1761 (\$5.N) - 5/16/16	2,124,399	8.25	8.5	400,183	4,898,201	102,966	856,551	859,730	200	225	3,224,397	174	187	808,317	1,797,716	100,000	2,996,474	60	70	462,213	570,534	404,302	93,880,791	3.48	
weekly change	-1.3%		1.2%			1.8%	-4.5%	-4.5%	-1.0%	-51.4%			10.5%			9.2%	-2.2%	-5.5%	4.1%			5.4%	1.8%	-0.3%	-1.7%		
<b>SALES</b>			<b>SALES</b>			<b>SALES</b>	<b>SALES</b>	<b>SALES</b>	<b>SALES</b>	<b>SALES</b>			<b>SALES</b>			<b>SALES</b>	<b>SALES</b>	<b>SALES</b>	<b>SALES</b>			<b>SALES</b>	<b>SALES</b>	<b>SALES</b>	<b>SALES</b>	<b>% of Sales</b>	
Calendar Year to date	1,543,910,181		47,990,147			8,671,261	102,261,837	2,156,244	18,308,618	22,545,604			49,990,379			12,976,994	36,732,661	1,999,289	304,361,978			32,792,368	12,201,238	9,363,491	2,206,262,289	100.0%	
Fiscal Year to date 2016	2,711,469,969		90,011,205			15,787,891	186,603,323	3,830,077	33,833,495	40,161,754			92,642,619			23,610,075	65,896,402	3,501,246	376,923,113			42,154,398	22,631,954	18,545,822	3,727,603,342	100.0%	
*Full week includes 2 days from FY15																											