



WEEKLY SALES SUMMARY

Unaudited

Week Ending: 5/27/2017

Texas Lottery Commission
Fiscal Year to Date Sales Comparison
Unaudited

Through the Week Ending 5/27/2017 (39 Weeks)

Sales by Game	FY 2015 *	FY 2016 **	FY 2017	\$ Change		% Change	
				FY 2017 to FY 2015	FY 2017 to FY 2016	FY 2017 to FY 2015	FY 2017 to FY 2016
Scratch Tickets	\$ 2,620,192,767	\$ 2,783,032,697	\$ 2,921,264,990	\$ 301,072,223	\$ 138,232,293	11.5%	5.0%
Lotto Texas	91,336,585	92,117,103	84,235,446	-7,101,139	-7,881,657	-7.8%	-8.6%
Lotto Extra	14,267,132	16,183,037	16,531,309	2,264,177	348,272	15.9%	2.2%
Pick 3	190,077,580	191,377,693	186,455,473	-3,622,107	-4,922,220	-1.9%	-2.6%
Pick 3 Sum It Up	3,876,849	3,933,352	3,558,725	-318,124	-374,627	-8.2%	-9.5%
Cash Five	37,793,329	34,673,333	32,618,070	-5,175,259	-2,055,263	-13.7%	-5.9%
Texas Two Step	40,886,790	41,240,237	40,867,531	-19,259	-372,706	0.0%	-0.9%
Mega Millions	117,507,424	96,307,706	82,742,223	-34,765,201	-13,565,483	-29.6%	-14.1%
Megaplier	27,352,988	24,502,852	22,605,189	-4,747,799	-1,897,663	-17.4%	-7.7%
Daily 4	65,285,753	67,639,970	70,637,385	5,351,632	2,997,416	8.2%	4.4%
Daily 4 Sum It Up	3,807,496	3,602,352	3,795,737	-11,759	193,385	-0.3%	5.4%
Powerball	166,236,055	379,967,041	171,493,051	5,256,996	-208,473,990	3.2%	-54.9%
Power Play	20,739,787	42,624,388	24,304,386	3,564,599	-18,320,002	17.2%	-43.0%
All or Nothing	28,945,762	23,180,526	21,529,914	-7,415,848	-1,650,612	-25.6%	-7.1%
Monopoly	1 2,656,370	-	-	-2,656,370	-	-100.0%	-
Texas Triple Chance	-	18,934,016	11,060,674	11,060,674	-7,873,342	-	-41.6%
Total	\$ 3,430,962,667	\$ 3,819,316,302	\$ 3,693,700,103	\$ 262,737,436	\$ -125,616,199	7.7%	-3.3%

* 3 extra days

** 2 extra days

1 Monopoly sales were suspended after draw on 12/12/14

Texas Lottery Commission
Fiscal Year to Date Cumulative Average Sales Comparison
Unaudited

Through the Week Ending 5/27/2017 (39 Weeks)

Sales by Game	FY 2015	FY 2016	FY 2017
Scratch Tickets	\$ 9,633,062	\$ 10,269,493	\$ 10,859,721
Lotto Texas	335,796	339,916	313,143
Lotto Extra	52,453	59,716	61,455
Pick 3	698,815	706,191	693,143
Pick 3 Sum It Up	14,253	14,514	13,229
Cash Five	138,946	127,946	121,257
Texas Two Step	150,319	152,178	151,924
Mega Millions	432,013	355,379	307,592
Megaplier	100,562	90,416	84,034
Daily 4	240,021	249,594	262,593
Daily 4 Sum It Up	13,998	13,293	14,111
Powerball	611,162	1,402,092	637,521
Power Play	76,249	157,286	90,351
All or Nothing	106,418	85,537	80,037
Monopoly	** 48,298	-	-
Texas Triple Chance	- *	77,282	41,118
Total	\$ <u>12,652,365</u>	\$ <u>14,100,833</u>	\$ <u>13,731,227</u>

thru 5/30/2015

thru 5/28/2016

thru 5/27/2017

272 days

271 days

269 days

** 55 days

* 245 days

Texas Lottery Commission
Fiscal Year Over Year Change in Sales
Unaudited
FY 2017 Compared to FY 2016

			SCRATCH TICKETS				DRAW GAMES				TOTAL SALES			
FY 2017			% change -				% change -				% change -			
Week	Week	Ending	FY 2017	FY 2016	Difference	Cumulative Sales	FY 2017	FY 2016	Difference	Cumulative Sales	FY 2017	FY 2016	Difference	Cumulative Sales
1	9/3/2016 *		\$32,980,266	\$49,534,249	(\$16,553,983)	-33.4%	\$10,218,656	\$17,091,724	(\$6,873,068)	-40.2%	\$43,198,922	\$66,625,973	(\$23,427,051)	-35.2%
2	9/10/2016		\$65,952,418	\$61,566,291	\$4,386,127	7.1%	\$19,635,377	\$20,630,922	(\$995,545)	-4.8%	\$85,587,795	\$82,197,213	\$3,390,583	4.1%
3	9/17/2016		\$66,196,270	\$63,530,657	\$2,665,613	4.2%	\$20,915,290	\$20,327,253	\$588,037	2.9%	\$87,111,560	\$83,857,910	\$3,253,650	3.9%
4	9/24/2016		\$64,383,005	\$61,731,400	\$2,651,605	4.3%	\$17,451,165	\$22,252,290	(\$4,801,125)	-21.6%	\$81,834,170	\$83,983,690	(\$2,149,520)	-2.6%
5	10/1/2016		\$67,349,951	\$67,048,415	\$301,536	0.4%	\$17,519,852	\$25,436,791	(\$7,916,939)	-31.1%	\$84,869,803	\$92,485,206	(\$7,615,403)	-8.2%
6	10/8/2016		\$71,598,690	\$66,049,706	\$5,548,984	8.4%	\$18,211,107	\$18,138,977	\$72,130	0.4%	\$89,809,797	\$84,188,683	\$5,621,114	6.7%
7	10/15/2016		\$69,444,762	\$65,073,593	\$4,371,169	6.7%	\$18,075,261	\$17,776,414	\$298,847	1.7%	\$87,520,023	\$82,850,007	\$4,670,016	5.6%
8	10/22/2016		\$69,317,066	\$64,087,437	\$5,229,629	8.2%	\$18,422,336	\$18,450,464	(\$28,128)	-0.2%	\$87,739,402	\$82,537,901	\$5,201,501	6.3%
9	10/29/2016		\$69,729,599	\$66,025,374	\$3,704,225	5.6%	\$18,535,248	\$19,568,150	(\$1,032,902)	-5.3%	\$88,264,847	\$85,593,524	\$2,671,324	3.1%
10	11/5/2016		\$73,451,702	\$68,137,192	\$5,314,510	7.8%	\$20,151,939	\$20,398,351	(\$246,413)	-1.2%	\$93,603,641	\$88,535,543	\$5,068,098	5.7%
11	11/12/2016		\$70,998,320	\$65,449,428	\$5,548,892	8.5%	\$19,925,460	\$20,169,382	(\$243,923)	-1.2%	\$90,923,780	\$85,618,810	\$5,304,970	6.2%
12	11/19/2016		\$75,265,196	\$68,364,421	\$6,900,775	10.1%	\$21,424,637	\$17,174,606	\$4,250,031	24.7%	\$96,689,833	\$85,539,027	\$11,150,806	13.0%
13	11/26/2016		\$68,983,157	\$61,091,628	\$7,891,529	12.9%	\$24,223,331	\$17,168,993	\$7,054,338	41.1%	\$93,206,488	\$78,260,621	\$14,945,867	19.1%
14	12/3/2016		\$72,688,514	\$67,830,827	\$4,857,687	7.2%	\$17,653,328	\$19,252,418	(\$1,599,090)	-8.3%	\$90,341,842	\$87,083,245	\$3,258,597	3.7%
15	12/10/2016		\$71,676,549	\$68,324,452	\$3,352,097	4.9%	\$18,150,590	\$19,529,408	(\$1,378,819)	-7.1%	\$89,827,139	\$87,853,860	\$1,973,279	2.2%
16	12/17/2016		\$73,909,726	\$71,041,258	\$2,868,468	4.0%	\$19,814,333	\$20,824,840	(\$1,010,507)	-4.9%	\$93,724,059	\$91,866,098	\$1,857,962	2.0%
17	12/24/2016		\$77,369,179	\$78,125,965	(\$756,786)	-1.0%	\$19,276,415	\$22,586,417	(\$3,310,002)	-14.7%	\$96,645,594	\$100,712,382	(\$4,066,788)	-4.0%
18	12/31/2016		\$80,868,854	\$76,712,975	\$4,155,879	5.4%	\$19,289,161	\$27,972,880	(\$8,683,720)	-31.0%	\$100,158,015	\$104,685,855	(\$4,527,841)	-4.3%
19	1/7/2017		\$73,328,624	\$77,136,541	(\$3,807,917)	-4.9%	\$18,611,644	\$127,289,478	(\$108,677,835)	-85.4%	\$91,940,268	\$204,426,019	(\$112,485,752)	-55.0%
20	1/14/2017		\$73,471,643	\$73,858,865	(\$387,222)	-0.5%	\$20,351,397	\$140,104,126	(\$119,752,729)	-85.5%	\$93,823,040	\$213,962,991	(\$120,139,951)	-56.1%
21	1/21/2017		\$72,229,342	\$70,665,700	\$1,563,642	2.2%	\$20,349,310	\$20,781,745	(\$432,435)	-2.1%	\$92,578,652	\$91,447,445	\$1,131,208	1.2%
22	1/28/2017		\$72,056,793	\$71,051,685	\$1,005,108	1.4%	\$21,668,657	\$20,433,401	\$1,235,257	6.0%	\$93,725,450	\$91,485,086	\$2,240,365	2.4%
23	2/4/2017		\$77,292,806	\$78,458,428	(\$1,165,622)	-1.5%	\$22,161,789	\$21,274,800	\$886,989	4.2%	\$99,454,595	\$99,733,228	(\$278,634)	-0.3%
24	2/11/2017		\$78,699,192	\$80,754,850	(\$2,055,658)	-2.5%	\$22,100,245	\$21,391,919	\$708,326	3.3%	\$100,799,437	\$102,146,769	(\$1,347,332)	-1.3%
25	2/18/2017		\$77,864,124	\$80,078,271	(\$2,214,147)	-2.8%	\$24,776,465	\$21,911,382	\$2,865,083	13.1%	\$102,640,589	\$101,989,653	\$650,936	0.6%
26	2/25/2017		\$80,287,015	\$78,832,217	\$1,454,798	1.8%	\$28,133,116	\$22,823,086	\$5,310,031	23.3%	\$108,420,131	\$101,655,303	\$6,764,829	6.7%
27	3/4/2017		\$87,500,184	\$80,019,524	\$7,480,660	9.3%	\$20,213,859	\$23,146,906	(\$2,933,047)	-12.7%	\$107,714,043	\$103,166,430	\$4,547,613	4.4%
28	3/11/2017		\$84,966,053	\$78,524,214	\$6,441,839	8.2%	\$21,024,757	\$19,311,625	\$1,713,132	8.9%	\$105,990,810	\$97,835,839	\$8,154,971	8.3%
29	3/18/2017		\$82,972,977	\$75,446,960	\$7,526,017	10.0%	\$20,434,291	\$18,001,000	\$2,433,292	13.5%	\$103,407,268	\$93,447,960	\$9,959,309	10.7%
30	3/25/2017		\$82,217,628	\$75,293,759	\$6,923,869	9.2%	\$20,282,992	\$18,553,964	\$1,729,028	9.3%	\$102,500,620	\$93,847,723	\$8,652,897	9.2%
31	4/1/2017		\$86,271,920	\$79,316,221	\$6,955,699	8.8%	\$19,497,142	\$19,482,563	\$14,580	0.1%	\$105,769,062	\$98,798,784	\$6,970,279	7.1%
32	4/8/2017		\$81,499,404	\$74,560,898	\$6,938,506	9.3%	\$17,854,294	\$20,100,629	(\$2,246,336)	-11.2%	\$99,353,698	\$94,661,527	\$4,692,171	5.0%
33	4/15/2017		\$81,831,134	\$74,056,586	\$7,774,548	10.5%	\$17,865,636	\$20,677,413	(\$2,811,777)	-13.6%	\$99,696,770	\$94,733,999	\$4,962,771	5.2%
34	4/22/2017		\$80,531,863	\$73,110,080	\$7,421,783	10.2%	\$18,337,257	\$20,313,339	(\$1,976,082)	-9.7%	\$98,869,120	\$93,423,419	\$5,445,702	5.8%
35	4/29/2017		\$81,433,819	\$73,448,019	\$7,985,800	10.9%	\$18,956,981	\$22,666,626	(\$3,709,646)	-16.4%	\$100,390,800	\$96,114,645	\$4,276,155	4.4%
36	5/6/2017		\$84,857,262	\$77,593,399	\$7,263,863	9.4%	\$19,489,624	\$33,262,968	(\$13,773,344)	-41.4%	\$104,346,886	\$110,856,367	(\$6,509,481)	-5.9%
37	5/13/2017		\$81,090,824	\$75,263,676	\$5,827,148	7.7%	\$19,420,237	\$20,250,149	(\$829,912)	-4.1%	\$100,511,061	\$95,513,825	\$4,997,236	5.2%
38	5/20/2017		\$80,557,866	\$74,274,808	\$6,283,058	8.5%	\$20,939,291	\$19,605,983	\$1,333,308	6.8%	\$101,497,157	\$93,880,791	\$7,616,366	8.1%
39	5/27/2017		\$78,141,293	\$71,562,728	\$6,578,565	9.2%	\$21,072,651	\$20,150,232	\$922,420	4.6%	\$99,213,944	\$91,712,960	\$7,500,985	8.2%
40	6/3/2017			\$73,085,109				\$21,067,550				\$94,152,659		
41	6/10/2017			\$70,593,768				\$21,389,794				\$91,983,562		
42	6/17/2017			\$69,501,864				\$22,402,713				\$91,904,577		

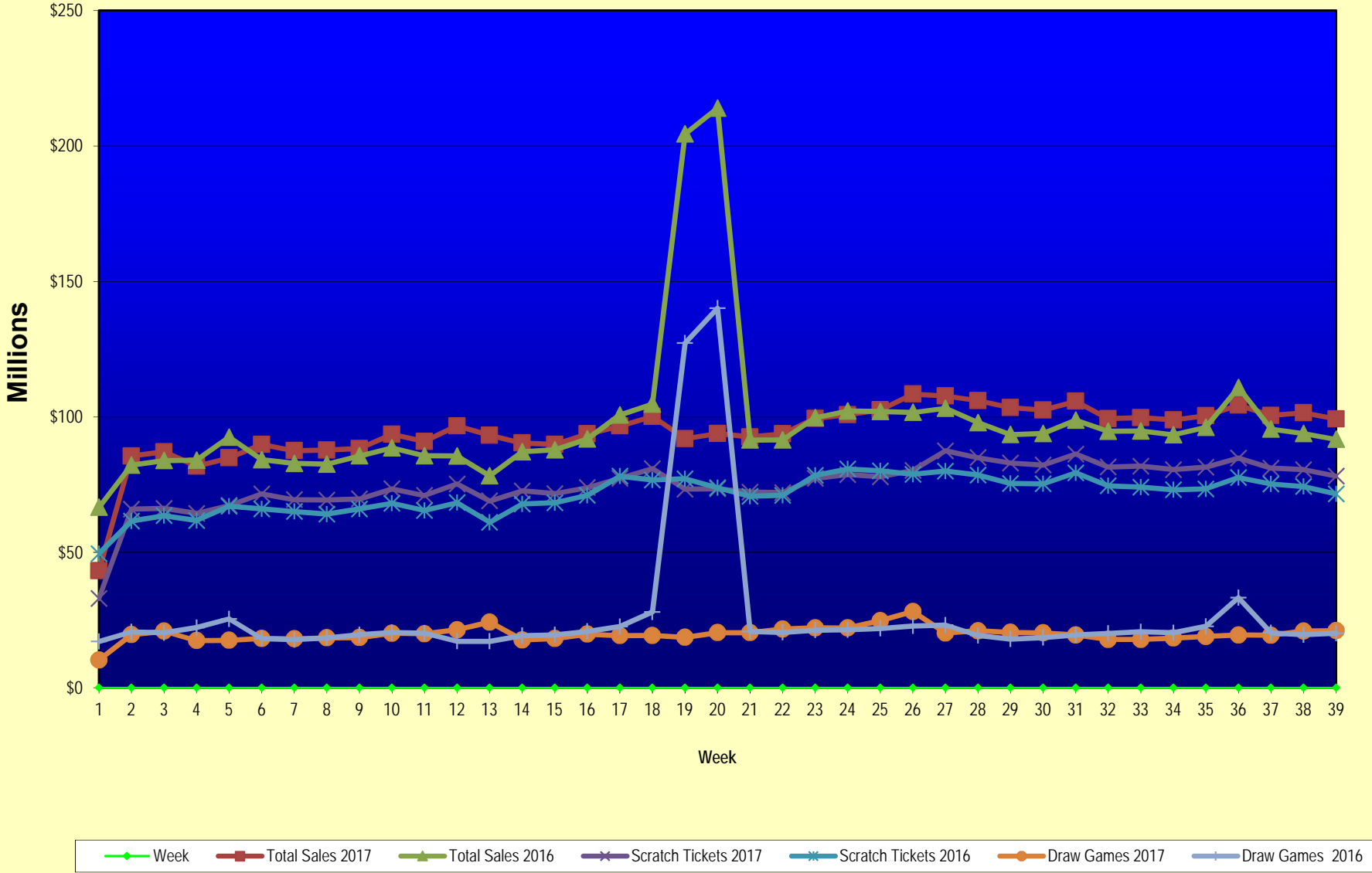
Texas Lottery Commission
Fiscal Year Over Year Change in Sales
Unaudited
FY 2017 Compared to FY 2016

			SCRATCH TICKETS				DRAW GAMES				TOTAL SALES			
FY 2017			FY 2017	FY 2016	Difference	% change - Cumulative Sales	FY 2017	FY 2016	Difference	% change - Cumulative Sales	FY 2017	FY 2016	Difference	% change - Cumulative Sales
Week	Week Ending													
43	6/24/2017			\$69,243,660				\$24,290,311				\$93,533,971		
44	7/1/2017			\$70,782,313				\$29,331,406				\$100,113,719		
45	7/8/2017			\$67,636,625				\$38,673,314				\$106,309,939		
46	7/15/2017			\$68,064,720				\$21,311,938				\$89,376,658		
47	7/22/2017			\$69,509,821				\$21,982,689				\$91,492,510		
48	7/29/2017			\$64,486,970				\$30,699,953				\$95,186,923		
49	8/5/2017			\$69,206,183				\$18,277,075				\$87,483,258		
50	8/12/2017			\$67,165,060				\$18,101,640				\$85,266,700		
51	8/19/2017			\$69,067,938				\$18,981,681				\$88,049,619		
52	8/26/2017			\$67,821,162				\$19,606,571				\$87,427,733		
	8/31/2017 **			\$36,609,542				\$9,310,254				\$45,919,796		
Total thru Current Week			\$2,921,264,990	\$2,783,032,697	\$138,232,293	5.0%	\$772,435,113	\$1,036,283,605	(\$263,848,492)	-25.5%	\$3,693,700,103	\$3,819,316,302	(\$125,616,199)	-3.3%
Fiscal Year Total			\$2,921,264,990	\$3,715,807,432			\$772,435,113	\$1,351,710,491			\$3,693,700,103	\$5,067,517,923		

* FY 17 includes 3 days; FY 16 includes 5 days

** FY 17 includes 5 days; FY 16 includes 4 days

Texas Lottery Commission Fiscal Year Over Year Change in Sales



Note: Week 1 is not a full week of sales as this report is prepared on a Fiscal Year basis.

Texas Lottery Commission
Scratch Tickets by Price Point
Sales, Prize Expense, Sales Contribution and Payout Percentage With Year Over Year Changes
Unaudited

Fiscal Year	Price Point	# of Active Games	FY Sales	% of Scratch Ticket Sales	Year over Year Change in Sales	FY Prize Expense	Year over Year Change in Prize Expense	FY Sales Contribution	Year over Year Change in Contribution	Average Prize Payout %	Year over Year Change in Payout %
2016	\$1.00	19	122,737,663	4.4%		73,997,141		48,740,522		60.3%	-0.4%
Through	\$2.00	33	277,296,394	10.0%		180,798,437		96,497,957		65.2%	-0.5%
5/28/2016	\$3.00	13	207,994,200	7.5%		137,006,603		70,987,597		65.9%	-0.1%
	\$5.00	55	916,996,010	32.9%		623,013,452		293,982,558		67.9%	0.0%
	\$10.00	18	556,817,380	20.0%		390,304,272		166,513,108		70.1%	-0.2%
	\$20.00	12	561,507,200	20.2%		420,804,284		140,702,916		74.9%	0.0%
	\$50.00	4	139,683,850	5.0%		108,649,614		31,034,236		77.8%	0.1%
Total		154	\$2,783,032,697			\$1,934,573,803		\$848,458,894		69.5%	0.1%
2017	\$1.00	23	111,558,121	3.8%		67,274,265		44,283,856		60.3%	0.1%
Through	\$2.00	29	245,380,172	8.4%		159,895,746		85,484,426		65.2%	0.0%
5/27/2017	\$3.00	12	200,435,007	6.9%		132,167,073		68,267,934		65.9%	0.1%
	\$5.00	55	921,010,050	31.5%		625,895,445		295,114,605		68.0%	0.0%
	\$10.00	20	667,813,710	22.9%		469,750,582		198,063,128		70.3%	0.3%
	\$20.00	14	615,969,080	21.1%		461,564,713		154,404,367		74.9%	0.0%
	\$50.00	5	159,098,850	5.4%		123,860,207		35,238,643		77.9%	0.1%
Total		158	\$2,921,264,990			\$2,040,408,031		\$880,856,959		69.8%	0.4%
Variance	\$1.00	4	-11,179,542		-9.1%	-6,722,876	-9.1%	-4,456,666	-9.1%	0.02%	
2017 to	\$2.00	-4	-31,916,222		-11.5%	-20,902,691	-11.6%	-11,013,531	-11.4%	-0.04%	
2016	\$3.00	-1	-7,559,193		-3.6%	-4,839,530	-3.5%	-2,719,663	-3.8%	0.07%	
	\$5.00	0	4,014,040		0.4%	2,881,993	0.5%	1,132,047	0.4%	0.02%	
	\$10.00	2	110,996,330		19.9%	79,446,310	20.4%	31,550,020	18.9%	0.25%	
	\$20.00	2	54,461,880		9.7%	40,760,429	9.7%	13,701,451	9.7%	-0.01%	
	\$50.00	1	19,415,000		13.9%	15,210,593	14.0%	4,204,407	13.5%	0.07%	
Total		4	\$138,232,293		5.0%	\$105,834,228	5.5%	\$32,398,065	3.8%	0.33%	

Notes - Scratch Ticket Variances

Texas Lottery Commission
Scratch Tickets by Price Point
Sales, Prize Expense, Sales Contribution and Payout Percentage With Year Over Year Changes
Unaudited

		FY 2017	FY 2016	Difference
Sales	\$1 - \$5	\$1,478,383,350	\$1,525,024,267	-\$46,640,917
Prize Exp.	\$1 - \$5	\$985,232,529	\$1,014,815,633	-\$29,583,104
Sales Cont.	\$1 - \$5	\$493,150,821	\$510,208,634	-\$17,057,813
Prize Exp. %	\$1 - \$5	66.6%	66.5%	0.1%
		FY 2017	FY 2016	Difference
Sales	\$10 - \$50	\$1,442,881,640	\$1,258,008,430	\$184,873,210
Prize Exp.	\$10 - \$50	\$1,055,175,502	\$919,758,170	\$135,417,332
Sales Cont.	\$10 - \$50	\$387,706,138	\$338,250,260	\$49,455,878
Prize Exp. %	\$10 - \$50	73.1%	73.1%	0.0%
		FY 2017	FY 2016	Difference
Sales	Scratch	\$2,921,264,990	\$2,783,032,697	\$138,232,293
Prize Exp.	Scratch	\$2,040,408,031	\$1,934,573,803	\$105,834,228
Sales Cont.	Scratch	\$880,856,959	\$848,458,894	\$32,398,065
Prize Exp. %	Scratch	69.8%	69.5%	0.3%

		FY 2017	FY 2016	Difference
Sales	\$1 - \$10	\$2,146,197,060	\$2,081,841,647	\$64,355,413
Prize Exp.	\$1 - \$10	\$1,454,983,111	\$1,405,119,906	\$49,863,206
Sales Cont.	\$1 - \$10	\$691,213,949	\$676,721,741	\$14,492,207
Prize Exp. %	\$1 - \$10	67.8%	67.5%	0.3%
		FY 2017	FY 2016	Difference
Sales	\$20 - \$50	\$775,067,930	\$701,191,050	\$73,876,880
Prize Exp.	\$20 - \$50	\$585,424,920	\$529,453,898	\$55,971,022
Sales Cont.	\$20 - \$50	\$189,643,010	\$171,737,152	\$17,905,858
Prize Exp. %	\$20 - \$50	75.5%	75.5%	0.0%
		FY 2017	FY 2016	Difference
Sales	Scratch	\$2,921,264,990	\$2,783,032,697	\$138,232,293
Prize Exp.	Scratch	\$2,040,408,031	\$1,934,573,803	\$105,834,228
Sales Cont.	Scratch	\$880,856,959	\$848,458,894	\$32,398,065
Prize Exp. %	Scratch	69.8%	69.5%	0.3%

Texas Lottery Commission
Weekly Sales Summary
& Comparison to Previous Week
 Unaudited

	Week Ending 5/27/2017	% of Sales	Week Ending 5/20/2017	% of Sales	\$ change	% change
	<u>THIS WEEK</u>		<u>LAST WEEK</u>			
Total Sales	<u>\$99,213,944</u>		<u>\$101,497,157</u>		<u>-\$2,283,213</u>	-2.25%
Scratch Tickets	<u>\$78,141,293</u>	78.8%	<u>\$80,557,866</u>	79.4%	<u>-\$2,416,573</u>	-3.00%
Lotto	\$2,068,201	2.1%	\$2,046,176	2.0%	\$22,025	1.08%
Lotto Extra	\$424,434	0.4%	\$422,286	0.4%	\$2,148	0.51%
Pick 3	\$4,638,929	4.7%	\$4,859,686	4.8%	-\$220,757	-4.54%
Pick 3 Sum It Up	\$86,608	0.1%	\$89,511	0.1%	-\$2,904	-3.24%
Cash Five	\$816,272	0.8%	\$838,373	0.8%	-\$22,101	-2.64%
Texas Two Step	\$1,056,270	1.1%	\$1,235,658	1.2%	-\$179,388	-14.52%
Mega Millions	\$1,908,726	1.9%	\$1,855,685	1.8%	\$53,041	2.86%
Megaplier	\$547,000	0.6%	\$540,286	0.5%	\$6,714	1.24%
Daily 4	\$1,882,240	1.9%	\$1,973,043	1.9%	-\$90,804	-4.60%
Daily 4 Sum It Up	\$98,574	0.1%	\$100,812	0.1%	-\$2,238	-2.22%
Powerball	\$5,930,262	6.0%	\$5,394,186	5.3%	\$536,076	9.94%
Power Play	\$807,672	0.8%	\$758,351	0.7%	\$49,321	6.50%
All or Nothing	\$551,164	0.6%	\$561,972	0.6%	-\$10,808	-1.92%
Texas Triple Chance	\$256,300	0.3%	\$263,266	0.3%	-\$6,966	-2.65%
Total Draw Game Sales	<u>\$21,072,651</u>		<u>\$20,939,291</u>		<u>\$133,361</u>	0.64%

* Totals may not sum due to rounding.

Texas Lottery Commission
Weekly Sales Summary
Unaudited

SCRATCH TICKETS
TOP TEN SELLING GAMES

For the week ending: 5/27/2017

Rank	Price Point	Game	Sales (Millions)
1	\$ 20	INSTANT MILLIONAIRE	\$ 4.908
2	\$ 10	WILLY WONKA GOLDEN TICKET	\$ 4.143
3	\$ 10	MEGA LOTERIA	\$ 4.138
4	\$ 50	ULTIMATE MILLIONS	\$ 3.879
5	\$ 5	SUPER LOTERIA	\$ 3.410
6	\$ 10	CASHWORD MULTIPLIER	\$ 3.345
7	\$ 20	100X THE CASH	\$ 3.291
8	\$ 20	MONEY	\$ 2.922
9	\$ 10	50X THE CASH	\$ 2.811
10	\$ 5	INSTANT RICHES	\$ 2.751

Texas Lottery Commission
Prize Payout Tracking Report
Unaudited

Through the week ending: 5/27/2017

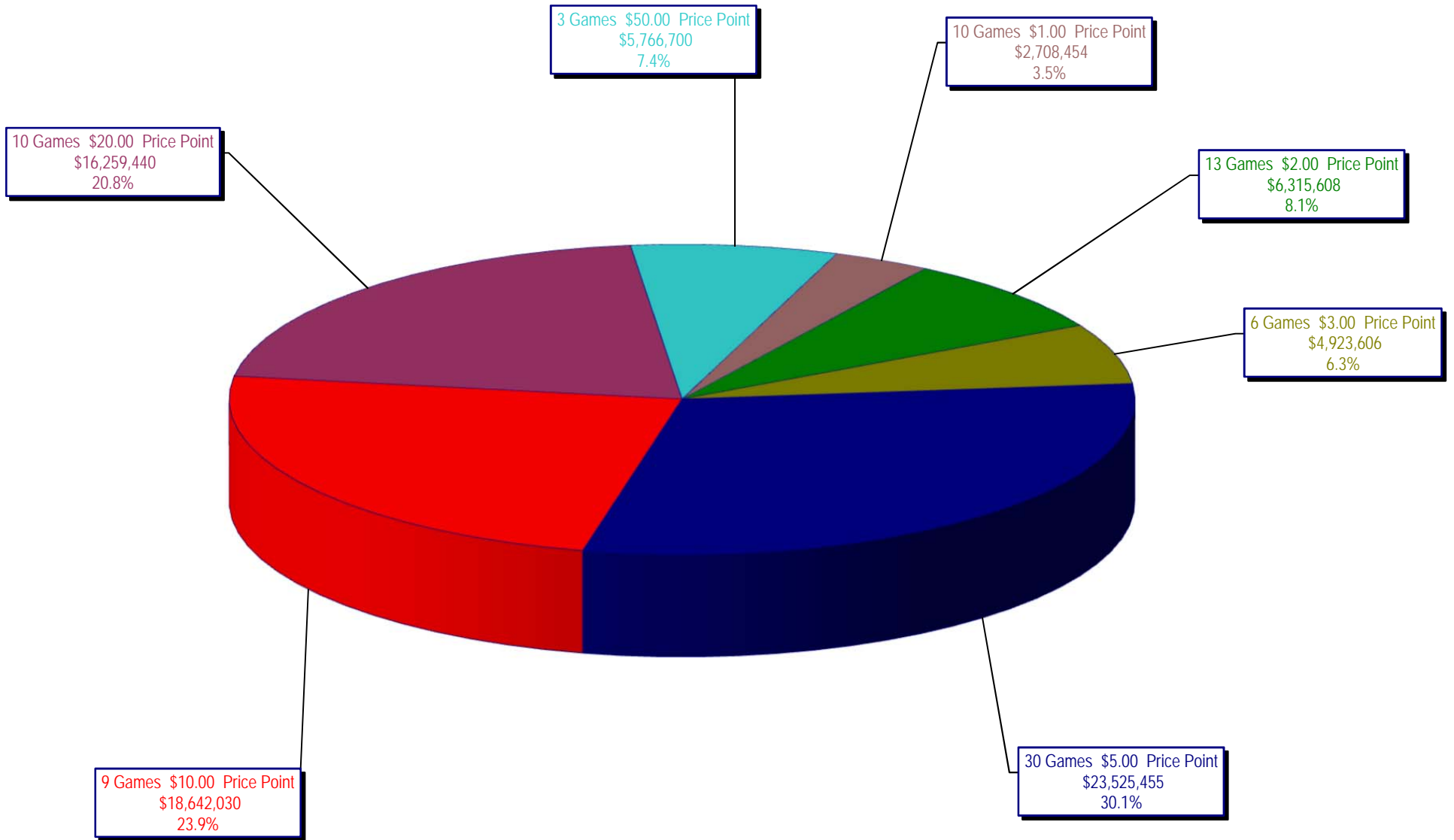
Draw Game Sales

		FY Sales Through Week Ending 5/27/2017		FY Prize Expense Through Week Ending 5/27/2017	Actual* Prize Payout	Base Payout (Prize Pool)
Lotto	\$	84,235,446	\$	42,218,429	50.12%	50.00%
Lotto Extra		16,531,309		8,755,700	52.96%	53.70%
Pick 3		186,455,473		89,914,840	48.22%	50.00%
Pick 3 Sum It Up		3,558,725		1,584,771	44.53%	50.00%
Cash Five		32,618,070		16,309,105	50.00%	50.00%
Texas Two Step		40,867,531		20,797,641	50.89%	50.00%
Mega Millions		82,742,223		42,242,655	51.05%	50.00%**
Megaplier		22,605,189		11,310,866	50.04%	N/A
Daily 4		70,637,385		39,780,100	56.32%	50.00%
Daily 4 Sum It Up		3,795,737		3,099,571	81.66%	50.00%
Powerball		171,493,051		85,759,035	50.01%	50.00%**
Power Play		24,304,386		12,155,519	50.01%	N/A
All or Nothing		21,529,914		11,811,754	54.86%	55.98%
Texas Triple Chance		11,060,674		6,032,501	54.54%	54.42%
Totals	\$	772,435,113	\$	391,772,487	50.72%	

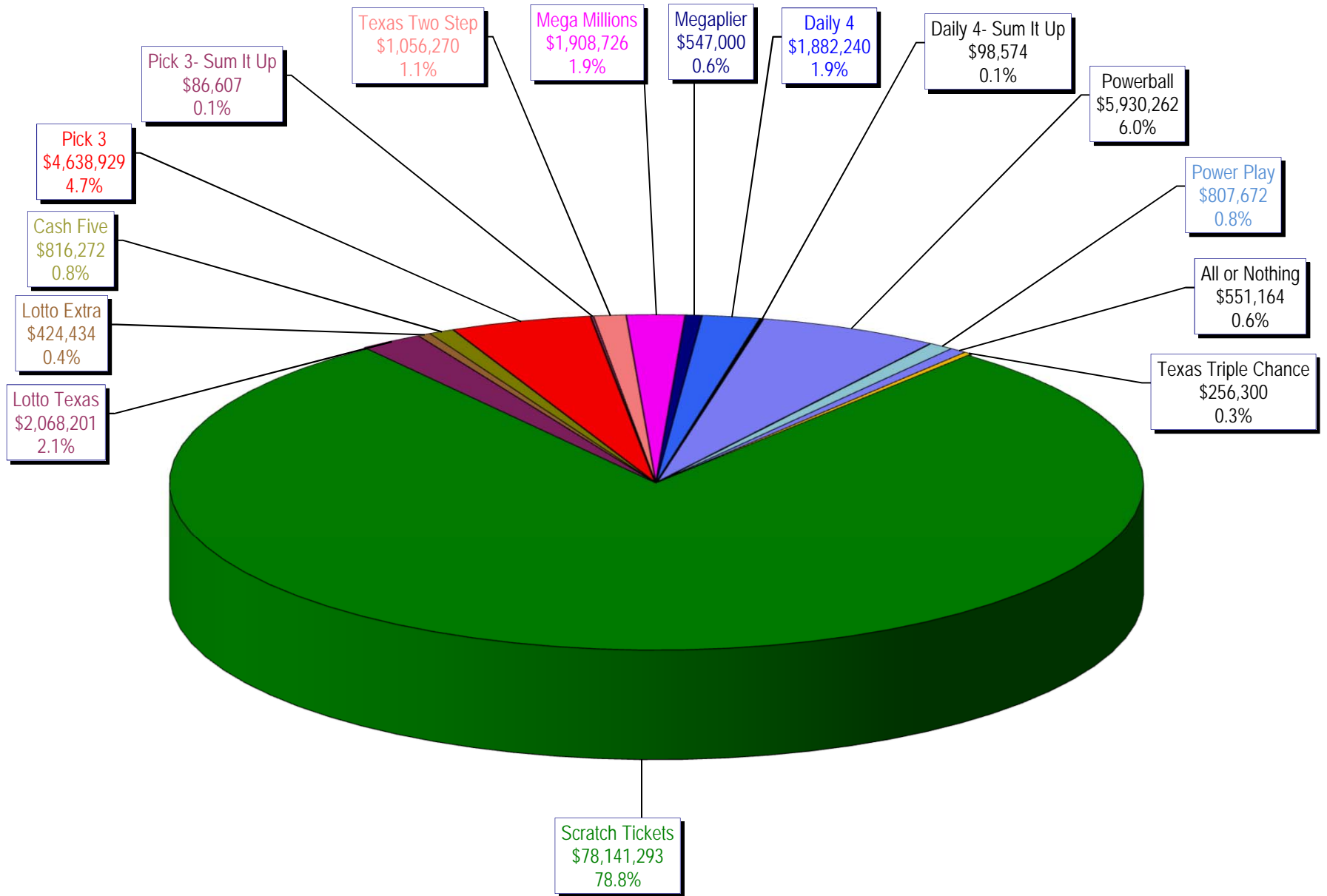
* Before Unclaimed Prizes

**Estimated; depends on # of guaranteed prizes won in Texas

Texas Lottery Commission
Scratch Ticket Sales
For the week ending 5/27/2017
(Unaudited)



Texas Lottery Commission
All Game Sales
For the week ending 5/27/2017
(Unaudited)



Texas Lottery Commission - Weekly Sales Summary for FY 2017 (Unaudited)

Week Ended	Scratch Tickets	New Games & Dates	Lotto Texas	Jackpot W S	Lotto Extra	Pick 3	Pick 3 Sum It Up	Cash Five	Texas Two Step	Jackpot M TH	Mega Millions	Jackpot T F	Megaplier	Daily 4	Daily 4 Sum It Up	Powerball	Jackpot W S	Power Play	All or Nothing	Texas Triple Chance	Total	Per Cap.
9/3/2016*	69,589,808	0	2,106,552	8.75 9.25	402,665	4,798,985	92,214	843,135	810,947	200 200	2,331,141	84 92	631,299	1,788,614	96,398	4,189,234	154 170	603,430	528,102	306,194	89,118,717	3.24
9/10/2016	65,952,418	1810 (\$1.N); 1809 (\$1.N); 1811 (\$5.N) - 9/06/16	2,095,828	9.75 10.25	399,944	4,590,651	86,697	818,614	862,148	225 275	2,490,552	101 111	655,066	1,647,119	87,455	4,473,836	186 205	628,810	506,718	291,940	85,587,795	3.12
9/17/2016	66,196,270	0	2,127,440	11 11.75	405,936	4,553,039	86,110	822,240	1,180,444	400 550	2,661,252	122 133	692,583	1,705,629	91,610	5,096,928	222 244	696,626	503,466	291,988	87,111,560	3.17
9/24/2016	64,383,005	1793 (\$2.N); 1782 (\$5.N); 1781 (\$10.N) - 9/19/16	2,141,721	12.25 13	404,127	4,551,066	83,958	811,604	1,465,789	700 900	1,733,288	15 20	489,347	1,680,793	90,386	2,790,676	40 50	429,512	503,041	275,858	81,834,170	2.98
10/1/2016	67,349,951	0	2,203,652	13.25 14	414,603	4,642,047	91,016	857,979	816,836	200 225	1,840,801	25 30	515,384	1,688,464	88,184	2,960,772	60 70	455,619	589,964	354,532	84,869,803	3.09
10/8/2016	71,598,690	1772 (\$1.N); 1770 (\$2.N); 1813 (\$5.N); 1779 (\$20.N) - 10/03/16	2,211,941	14.5 15.5	419,062	4,900,537	94,965	867,520	849,234	200 225	1,925,289	35 41	540,723	1,780,544	92,908	3,109,092	80 91	471,027	611,898	336,368	89,809,797	3.27
10/15/2016	69,444,762	0	2,207,002	16 16.75	416,802	4,549,017	89,171	836,548	1,024,493	300 425	1,780,458	49 15	496,567	1,679,519	87,007	3,499,528	107 122	510,617	577,343	321,190	87,520,023	3.19
10/22/2016	69,317,066	1814 (\$3.N); 1815 (\$5.N); 1832 (\$50.N) - 10/17/16	2,222,089	17 18	420,632	4,457,898	84,115	836,942	1,260,293	575 750	1,714,985	20 25	482,408	1,636,471	83,009	3,800,444	136 151	542,655	564,808	315,588	87,739,402	3.19
10/29/2016	69,729,599	0	2,269,908	18.5 19.25	430,487	4,511,234	86,114	833,125	779,029	200 200	1,781,093	30 35	500,203	1,711,520	88,083	4,097,116	164 180	575,614	565,102	306,622	88,264,847	3.21
11/5/2016	73,451,702	0	2,168,782	20 5	414,167	4,996,360	97,149	859,798	796,978	200 200	1,904,765	40 47	534,014	1,913,301	100,223	4,796,408	198 217	660,205	591,246	318,544	93,603,641	3.41
11/12/2016	70,998,320	1816 (\$2.N); 1808 (\$5.N); 1817 (\$5.N); 1818 (\$10.N) - 11/07/16	1,893,513	5.25 5.5	368,470	4,642,196	89,581	833,195	869,408	225 275	1,964,313	54 65	541,639	1,741,306	90,176	5,313,351	236 258	715,597	563,280	299,436	90,923,780	3.31
11/19/2016	75,265,196	1819 (\$1.N); 1820 (\$5.N); 1869 (\$10.N) - 11/16/16	1,924,291	5.75 6	376,977	4,595,331	87,939	830,211	1,078,765	400 550	2,072,033	73 82	567,597	1,715,227	91,335	6,391,094	293 320	836,372	557,058	300,408	96,689,833	3.52
11/26/2016	68,983,157	0	1,945,264	6.25 6.5	383,703	4,472,018	83,761	795,696	737,931	200 225	1,698,370	15 20	487,160	1,649,794	84,195	9,839,524	359 403	1,235,062	527,328	283,526	93,206,488	3.39
12/3/2016	72,688,514	0	1,989,472	6.75 7	386,573	4,901,443	91,365	857,900	1,002,319	275 375	1,761,923	25 30	499,193	1,823,528	94,278	2,932,322	40 54	444,551	569,036	299,426	90,341,842	3.29
12/10/2016	71,676,549	1807 (\$5.N); 1866 (\$10.N); 1822 (\$20.N) - 12/05/16	2,006,953	7.25 7.5	388,230	4,748,391	88,668	849,940	1,337,879	525 700	1,830,451	35 43	505,981	1,812,622	88,690	3,176,570	67 85	475,269	551,930	289,016	89,827,139	3.27
12/17/2016	73,909,726	0	2,048,592	7.75 8	398,632	4,778,144	88,676	854,061	1,906,792	900 1,125	1,966,377	51 59	539,946	1,844,818	94,354	3,892,738	100 119	561,900	551,086	288,218	93,724,059	3.41
12/24/2016	77,369,179	1823 (\$2.N); 1824 (\$5.N) - 12/19/16	2,210,042	8.25 8.75	421,128	4,973,874	91,323	861,510	1,331,122	1,375 200	2,200,791	67 76	590,601	2,035,860	117,672	3,119,154	40 50	473,229	558,224	291,886	96,645,594	3.52
12/31/2016	80,868,854	0	2,282,841	9.5 10.25	440,711	4,899,905	94,021	861,849	887,304	225 275	2,362,970	85 96	630,614	2,004,547	116,201	3,351,922	60 70	506,969	555,832	293,476	100,158,015	3.65
1/7/2017	73,328,624	1825 (\$1.N); 1826 (\$5.N); 1827 (\$10.N) - 01/03/17	2,097,687	10.75 11.5	408,605	4,745,822	91,405	842,694	819,153	200 200	2,524,889	105 117	654,478	1,898,406	110,548	3,107,618	80 94	474,348	550,422	285,570	91,940,268	3.35
1/14/2017	73,471,643	0	2,225,676	12 12.5	433,448	5,078,795	95,352	857,133	949,656	225 300	2,863,206	126 137	730,587	1,930,373	112,082	3,684,764	106 121	544,661	562,100	283,564	93,823,040	3.42
1/21/2017	72,229,342	1775 (\$2.N); 1760 (\$3.N); 1863 (\$5.N); 1864 (\$5.N); 1865 (\$5.N); 1829 (\$20.N) - 01/16/17	2,187,377	13.25 14	426,689	4,773,213	89,986	839,794	1,221,317	425 575	2,924,743	150 162	731,997	1,874,302	108,260	3,809,290	135 153	558,760	531,350	272,232	92,578,652	3.37
1/28/2017	72,056,793	0	2,265,574	14.75 15.5	435,796	4,784,366	89,015	836,675	1,639,149	750 950	3,196,084	177 188	786,375	1,799,122	97,940	4,327,764	170 187	608,152	532,502	270,144	93,725,450	3.41
2/4/2017	77,292,806	0	2,340,683	16.25 17	457,065	5,065,632	97,384	859,297	1,988,757	1,200 1,450	1,807,723	15 20	506,796	1,898,166	105,468	5,456,612	206 229	741,396	557,324	279,486	99,454,595	3.62
2/11/2017	78,699,192	1752 (\$5.N); 1867 (\$10.N) - 02/06/17 1767 (\$1.N) - 02/10/17	2,353,444	17.5 18	462,141	5,105,285	98,776	867,663	880,079	200 225	1,862,092	25 30	532,045	1,890,124	108,210	6,261,114	255 285	839,953	563,628	275,692	100,799,437	3.67
2/18/2017	77,864,124	0	2,407,222	18.75 19.75	478,558	4,833,590	93,535	844,013	908,531	300 200	1,973,451	38 46	561,783	1,826,773	108,517	8,780,642	310 349	1,133,132	550,644	276,074	102,640,589	3.74

Texas Lottery Commission - Weekly Sales Summary for FY 2017 (Unaudited)

Week Ended	Scratch Tickets	New Games & Dates	Lotto Texas	Jackpot W S	Lotto Extra	Pick 3	Pick 3 Sum It Up	Cash Five	Texas Two Step	Jackpot M TH	Mega Millions	Jackpot T F	Megaplier	Daily 4	Daily 4 Sum It Up	Powerball	Jackpot W S	Power Play	All or Nothing	Texas Triple Chance	Total	Per Cap.
2/25/2017	80,287,015	1876 (\$1.N); 1831 (\$5.N) - 02/20/17	2,606,244	20.25 21	520,379	4,914,612	95,213	850,348	848,140	200 225	2,219,616	55 64	617,739	1,832,600	100,683	11,293,438	403 40	1,395,663	556,882	281,560	108,420,131	3.95
3/4/2017	87,500,184	0	2,567,325	21.75 22.5	509,409	5,330,670	101,687	893,098	1,120,981	300 425	2,321,182	73 83	641,083	2,010,651	112,173	3,217,286	53 68	511,699	590,672	285,944	107,714,043	3.92
3/11/2017	84,966,053	1699 (\$2.N); 1868 (\$3.N); 1833 (\$5.N) - 03/06/17 1755 (\$5.N); 1853 (\$20.N) - 03/08/17	2,588,161	23.5 24.5	513,793	5,226,715	101,446	881,469	1,405,624	600 775	2,563,375	94 106	683,906	1,899,173	103,287	3,637,612	85 104	562,430	579,420	278,346	105,990,810	3.86
3/18/2017	82,972,977	1806 (\$3.N) - 03/14/17	2,592,069	25.5 26.25	513,061	4,875,639	93,232	851,969	854,304	200 225	2,652,325	119 131	701,405	1,772,646	94,333	4,006,212	123 141	601,813	550,726	274,558	103,407,268	3.76
3/25/2017	82,217,628	1836 (\$1.N); 1835 (\$5.N); 1834 (\$10.N) - 03/20/17	2,602,050	26.75 27.25	516,731	5,013,110	100,086	846,048	856,270	200 225	2,824,549	140 151	736,397	1,805,723	95,407	3,520,114	155 40	542,539	555,218	268,750	102,500,620	3.73
4/1/2017	86,271,920	0	2,020,314	5 5.25	408,799	5,070,719	101,350	863,130	886,811	300 200	3,145,112	162 174	818,473	1,853,296	97,814	2,918,488	50 60	468,058	573,072	271,708	105,769,062	3.85
4/8/2017	81,499,404	1695 (\$2.N); 1850 (\$3.N); 1821 (\$5.N) - 04/03/17	2,012,832	5.5 5.75	413,441	5,120,496	102,223	877,611	863,201	225 200	1,840,599	15 20	530,730	1,891,162	98,057	2,801,946	40 50	446,980	582,584	272,432	99,353,698	3.62
4/15/2017	81,831,134	0	2,025,065	6 6.25	418,151	4,887,655	93,845	848,027	931,230	225 300	1,870,081	25 30	541,020	1,849,252	101,095	2,996,096	60 70	470,454	564,516	269,150	99,696,770	3.63
4/22/2017	80,531,863	1875 (\$1.N); 1773 (\$5.N); 1870 (\$50.N) - 04/17/17	2,015,821	6.5 6.75	410,500	4,874,889	93,304	841,820	1,151,971	425 575	1,921,222	37 45	546,796	1,907,275	103,817	3,157,754	80 90	469,659	557,346	265,084	98,869,120	3.60
4/29/2017	81,433,819	0	2,051,812	7 7.25	419,985	4,894,357	92,684	845,077	849,146	200 225	2,038,253	52 61	572,946	1,946,857	101,948	3,741,048	100 113	562,887	567,734	272,248	100,390,800	3.65
5/6/2017	84,857,262	1872 (\$2.N); 1861 (\$2.N); 1841 (\$5.N); 1842 (\$10.N) - 05/01/17	2,080,169	7.5 7.75	423,215	5,136,242	97,429	870,847	906,560	300 200	1,758,913	15 20	513,100	2,008,757	103,566	4,117,610	130 147	603,461	593,958	275,798	104,346,886	3.80
5/13/2017	81,090,824	1858 (\$2.N) - 05/11/17	2,031,598	8 8.25	416,468	4,877,459	90,453	845,235	929,064	225 300	1,777,614	25 30	518,817	1,875,221	96,020	4,463,984	165 184	645,454	581,856	270,994	100,511,061	3.66
5/20/2017	80,557,866	1843 (\$1.N); 1851 (\$5.N); 1838 (\$20.N) - 05/15/17	2,046,176	8.75 9.5	422,286	4,859,686	89,511	838,373	1,235,658	425 575	1,855,665	36 43	540,286	1,973,043	100,812	5,394,186	204 228	758,351	561,972	263,266	101,497,157	3.69
5/27/2017	78,141,293	1886 (\$5.N) - 05/22/17	2,068,201	10 10.5	424,434	4,638,929	86,608	816,272	1,056,270	750 200	1,908,726	50 58	547,000	1,882,240	98,574	5,930,262	250 275	807,672	551,164	256,300	99,213,944	3.61
weekly change	-3.0%		1.1%		0.5%	-4.5%	-3.2%	-2.6%	-14.5%		2.9%		1.2%	-4.6%	-2.2%	9.9%		6.5%	-1.9%	-2.6%	-2.2%	
	SALES		SALES		SALES	SALES	SALES	SALES	SALES		SALES		SALES	SALES	SALES	SALES		SALES	SALES	SALES	SALES	% of Sales
Calendar Year to date	1,679,101,766		47,185,500		9,432,954	104,107,877	1,994,519	17,916,593	22,301,872		47,849,440		13,013,759	39,625,158	2,158,606	96,623,840		13,767,522	11,815,090	5,748,900	2,112,643,396	100.0%
Fiscal Year to date 2017	2,921,264,990		84,235,446		16,531,309	186,455,473	3,558,725	32,618,070	40,867,531		82,742,223		22,605,189	70,637,385	3,795,737	171,493,051		24,304,386	21,529,914	11,060,674	3,693,700,103	100.0%
*Full week includes 4 days from FY16																						