



WEEKLY SALES SUMMARY

Unaudited

Week Ending: 6/04/2016

Texas Lottery Commission
Fiscal Year to Date Sales Comparison
Unaudited

Through the Week Ending 6/04/2016 (40 Weeks)

Sales by Game	FY 2014 *	FY 2015 **	FY 2016	\$ Change		% Change	
				FY 2016 to FY 2014	FY 2016 to FY 2015	FY 2016 to FY 2014	FY 2016 to FY 2015
Scratch Tickets	\$ 2,557,895,162	\$ 2,691,446,773	\$ 2,856,117,806	\$ 298,222,644	\$ 164,671,033	11.7%	6.1%
Lotto Texas	107,034,982	93,620,832	94,285,902	-12,749,080	665,070	-11.9%	0.7%
Lotto Extra	14,530,510	14,646,860	16,596,103	2,065,593	1,949,243	14.2%	13.3%
Pick 3	196,111,222	195,045,923	196,338,322	227,101	1,292,399	0.1%	0.7%
Pick 3 Sum It Up	3,856,283	3,986,440	4,036,773	180,491	50,334	4.7%	1.3%
Cash Five	40,752,370	38,775,648	35,531,815	-5,220,555	-3,243,833	-12.8%	-8.4%
Texas Two Step	43,894,071	41,773,537	42,196,113	-1,697,958	422,576	-3.9%	1.0%
Mega Millions	156,757,558	121,228,225	100,181,341	-56,576,217	-21,046,884	-36.1%	-17.4%
Megaplier	33,710,012	28,222,367	25,448,246	-8,261,766	-2,774,121	-24.5%	-9.8%
Daily 4	64,513,399	67,018,513	69,445,051	4,931,653	2,426,539	7.6%	3.6%
Daily 4 Sum It Up	3,991,900	3,904,971	3,701,504	-290,396	-203,467	-7.3%	-5.2%
Powerball	163,743,426	169,760,408	383,415,419	219,671,993	213,655,011	134.2%	125.9%
Power Play	19,732,446	21,218,661	43,148,039	23,415,593	21,929,378	118.7%	103.3%
All or Nothing	36,791,787	29,650,848	23,741,372	-13,050,415	-5,909,476	-35.5%	-19.9%
Monopoly	- ¹	2,656,370	-	-	-2,656,370	-	-100.0%
Texas Triple Chance	-	-	19,285,154	19,285,154	19,285,154	-	-
Total	\$ 3,443,315,126	\$ 3,522,956,375	\$ 3,913,468,960	\$ 470,153,834	\$ 390,512,585	13.7%	11.1%

* 2 extra days

** 1 extra day

¹ Monopoly sales were suspended after draw on 12/12/14

Texas Lottery Commission
Fiscal Year to Date Cumulative Average Sales Comparison
Unaudited

Through the Week Ending 6/04/2016 (40 Weeks)

Sales by Game	FY 2014	FY 2015	FY 2016
Scratch Tickets	\$ 9,135,340	\$ 9,646,763	\$ 10,273,805
Lotto Texas	382,268	335,559	339,158
Lotto Extra	51,895	52,498	59,698
Pick 3	700,397	699,089	706,253
Pick 3 Sum It Up	13,772	14,288	14,521
Cash Five	145,544	138,981	127,812
Texas Two Step	156,765	149,726	151,785
Mega Millions	559,848	434,510	360,365
Megaplier	120,393	101,155	91,540
Daily 4	230,405	240,210	249,802
Daily 4 Sum It Up	14,257	13,996	13,315
Powerball	584,798	608,460	1,379,192
Power Play	70,473	76,053	155,209
All or Nothing	131,399	106,275	85,401
Monopoly	- **	48,298	-
Texas Triple Chance	-	- *	76,528
Total	\$ <u>12,297,554</u>	\$ <u>12,665,860</u>	\$ <u>14,084,384</u>

thru 6/07/2014
280 days

**

thru 6/06/2015
279 days
55 days

*

thru 6/04/2016
278 days
252 days

Texas Lottery Commission
Fiscal Year Over Year Change in Sales
Unaudited
FY 2016 Compared to FY 2015

			SCRATCH TICKETS				DRAW GAMES				TOTAL SALES			
FY 2016			% change -				% change -				% change -			
Week	Week	Ending	FY 2016	FY 2015	Difference	Cumulative Sales	FY 2016	FY 2015	Difference	Cumulative Sales	FY 2016	FY 2015	Difference	Cumulative Sales
1	9/5/2015 *		\$49,534,249	\$54,911,801	(\$5,377,552)	-9.8%	\$17,091,724	\$17,482,488	(\$390,765)	-2.2%	\$66,625,973	\$72,394,289	(\$5,768,317)	-8.0%
2	9/12/2015		\$61,566,291	\$61,436,533	\$129,758	0.2%	\$20,630,922	\$19,097,081	\$1,533,841	8.0%	\$82,197,213	\$80,533,614	\$1,663,599	2.1%
3	9/19/2015		\$63,530,657	\$60,959,234	\$2,571,423	4.2%	\$20,327,253	\$20,567,894	(\$240,641)	-1.2%	\$83,857,910	\$81,527,128	\$2,330,782	2.9%
4	9/26/2015		\$61,731,400	\$59,710,056	\$2,021,344	3.4%	\$22,252,290	\$19,920,828	\$2,331,462	11.7%	\$83,983,690	\$79,630,884	\$4,352,806	5.5%
5	10/3/2015		\$67,048,415	\$62,119,854	\$4,928,561	7.9%	\$25,436,791	\$18,531,421	\$6,905,370	37.3%	\$92,485,206	\$80,651,275	\$11,833,931	14.7%
6	10/10/2015		\$66,049,706	\$61,253,665	\$4,796,041	7.8%	\$18,138,977	\$18,985,332	(\$846,355)	-4.5%	\$84,188,683	\$80,238,997	\$3,949,687	4.9%
7	10/17/2015		\$65,073,593	\$60,230,048	\$4,843,545	8.0%	\$17,776,414	\$19,538,402	(\$1,761,988)	-9.0%	\$82,850,007	\$79,768,450	\$3,081,558	3.9%
8	10/24/2015		\$64,087,437	\$62,384,112	\$1,703,325	2.7%	\$18,450,464	\$21,475,643	(\$3,025,179)	-14.1%	\$82,537,901	\$83,859,755	(\$1,321,854)	-1.6%
9	10/31/2015		\$66,025,374	\$63,404,713	\$2,620,661	4.1%	\$19,568,150	\$23,568,817	(\$4,000,668)	-17.0%	\$85,593,524	\$86,973,530	(\$1,380,007)	-1.6%
10	11/7/2015		\$68,137,192	\$65,486,719	\$2,650,473	4.0%	\$20,398,351	\$23,749,032	(\$3,350,681)	-14.1%	\$88,535,543	\$89,235,751	(\$700,208)	-0.8%
11	11/14/2015		\$65,449,428	\$61,745,521	\$3,703,907	6.0%	\$20,169,382	\$17,449,604	\$2,719,779	15.6%	\$85,618,810	\$79,195,125	\$6,423,686	8.1%
12	11/21/2015		\$68,364,421	\$66,353,583	\$2,010,838	3.0%	\$17,174,606	\$17,108,084	\$66,522	0.4%	\$85,539,027	\$83,461,667	\$2,077,360	2.5%
13	11/28/2015		\$61,091,628	\$60,471,184	\$620,444	1.0%	\$17,168,993	\$17,303,129	(\$134,136)	-0.8%	\$78,260,621	\$77,774,313	\$486,309	0.6%
14	12/5/2015		\$67,830,827	\$66,648,696	\$1,182,131	1.8%	\$19,252,418	\$18,862,425	\$389,994	2.1%	\$87,083,245	\$85,511,121	\$1,572,125	1.8%
15	12/12/2015		\$68,324,452	\$65,708,630	\$2,615,822	4.0%	\$19,529,408	\$18,649,598	\$879,811	4.7%	\$87,853,860	\$84,358,228	\$3,495,633	4.1%
16	12/19/2015		\$71,041,258	\$68,551,298	\$2,489,960	3.6%	\$20,824,840	\$19,051,100	\$1,773,740	9.3%	\$91,866,098	\$87,602,398	\$4,263,700	4.9%
17	12/26/2015		\$78,125,965	\$73,858,618	\$4,267,347	5.8%	\$22,586,417	\$20,006,357	\$2,580,061	12.9%	\$100,712,382	\$93,864,975	\$6,847,408	7.3%
18	1/2/2016		\$76,712,975	\$67,733,268	\$8,979,707	13.3%	\$27,972,880	\$21,355,167	\$6,617,714	31.0%	\$104,685,855	\$89,088,435	\$15,597,421	17.5%
19	1/9/2016		\$77,136,541	\$64,745,641	\$12,390,900	19.1%	\$127,289,478	\$22,265,347	\$105,024,131	471.7%	\$204,426,019	\$87,010,988	\$117,415,031	134.9%
20	1/16/2016		\$73,858,865	\$64,015,166	\$9,843,699	15.4%	\$140,104,126	\$23,694,617	\$116,409,509	491.3%	\$213,962,991	\$87,709,783	\$126,253,208	143.9%
21	1/23/2016		\$70,665,700	\$62,569,156	\$8,096,544	12.9%	\$20,781,745	\$19,765,442	\$1,016,303	5.1%	\$91,447,445	\$82,334,598	\$9,112,847	11.1%
22	1/30/2016		\$71,051,685	\$68,001,588	\$3,050,097	4.5%	\$20,433,401	\$22,877,000	(\$2,443,600)	-10.7%	\$91,485,086	\$90,878,588	\$606,498	0.7%
23	2/6/2016		\$78,458,428	\$75,677,650	\$2,780,778	3.7%	\$21,274,800	\$31,662,209	(\$10,387,409)	-32.8%	\$99,733,228	\$107,339,859	(\$7,606,631)	-7.1%
24	2/13/2016		\$80,754,850	\$75,368,712	\$5,386,138	7.1%	\$21,391,919	\$46,091,747	(\$24,699,828)	-53.6%	\$102,146,769	\$121,460,459	(\$19,313,690)	-15.9%
25	2/20/2016		\$80,078,271	\$74,833,076	\$5,245,195	7.0%	\$21,911,382	\$19,865,172	\$2,046,211	10.3%	\$101,989,653	\$94,698,248	\$7,291,406	7.7%
26	2/27/2016		\$78,832,217	\$69,918,013	\$8,914,204	12.7%	\$22,823,086	\$19,735,352	\$3,087,734	15.6%	\$101,655,303	\$89,653,365	\$12,001,938	13.4%
27	3/5/2016		\$80,019,524	\$74,848,961	\$5,170,563	6.9%	\$23,146,906	\$19,946,068	\$3,200,838	16.0%	\$103,166,430	\$94,795,029	\$8,371,401	8.8%
28	3/12/2016		\$78,524,214	\$70,079,409	\$8,444,805	12.1%	\$19,311,625	\$20,044,562	(\$732,937)	-3.7%	\$97,835,839	\$90,123,971	\$7,711,868	8.6%
29	3/19/2016		\$75,446,960	\$70,368,686	\$5,078,274	7.2%	\$18,001,000	\$18,480,795	(\$479,795)	-2.6%	\$93,447,960	\$88,849,481	\$4,598,479	5.2%
30	3/26/2016		\$75,293,759	\$70,280,600	\$5,013,159	7.1%	\$18,553,964	\$17,595,205	\$958,760	5.4%	\$93,847,723	\$87,875,805	\$5,971,919	6.8%
31	4/2/2016		\$79,316,221	\$74,369,952	\$4,946,269	6.7%	\$19,482,563	\$18,378,917	\$1,103,646	6.0%	\$98,798,784	\$92,748,869	\$6,049,915	6.5%
32	4/9/2016		\$74,560,898	\$67,416,817	\$7,144,081	10.6%	\$20,100,629	\$18,594,844	\$1,505,785	8.1%	\$94,661,527	\$86,011,661	\$8,649,866	10.1%
33	4/16/2016		\$74,056,586	\$68,393,316	\$5,663,270	8.3%	\$20,677,413	\$18,104,632	\$2,572,781	14.2%	\$94,733,999	\$86,497,948	\$8,236,051	9.5%
34	4/23/2016		\$73,110,080	\$70,078,182	\$3,031,898	4.3%	\$20,313,339	\$17,957,150	\$2,356,189	13.1%	\$93,423,419	\$88,035,332	\$5,388,087	6.1%
35	4/30/2016		\$73,448,019	\$71,744,718	\$1,703,301	2.4%	\$22,666,626	\$18,961,113	\$3,705,513	19.5%	\$96,114,645	\$90,705,831	\$5,408,814	6.0%
36	5/7/2016		\$77,593,399	\$73,415,978	\$4,177,421	5.7%	\$33,262,968	\$20,210,341	\$13,052,628	64.6%	\$110,856,367	\$93,626,319	\$17,230,049	18.4%
37	5/14/2016		\$75,263,676	\$72,152,109	\$3,111,567	4.3%	\$20,250,149	\$20,362,774	(\$112,626)	-0.6%	\$95,513,825	\$92,514,883	\$2,998,942	3.2%
38	5/21/2016		\$74,274,808	\$70,399,950	\$3,874,858	5.5%	\$19,605,983	\$21,246,276	(\$1,640,294)	-7.7%	\$93,880,791	\$91,646,226	\$2,234,565	2.4%
39	5/28/2016		\$71,562,728	\$68,547,554	\$3,015,174	4.4%	\$20,150,232	\$22,227,946	(\$2,077,714)	-9.3%	\$91,712,960	\$90,775,500	\$937,460	1.0%
40	6/4/2016		\$73,085,109	\$71,254,006	\$1,831,103	2.6%	\$21,067,550	\$20,739,703	\$327,847	1.6%	\$94,152,659	\$91,993,709	\$2,158,950	2.3%
41	6/11/2016			\$65,878,375				\$17,216,403				\$83,094,778		
42	6/18/2016			\$66,658,742				\$17,340,531				\$83,999,273		

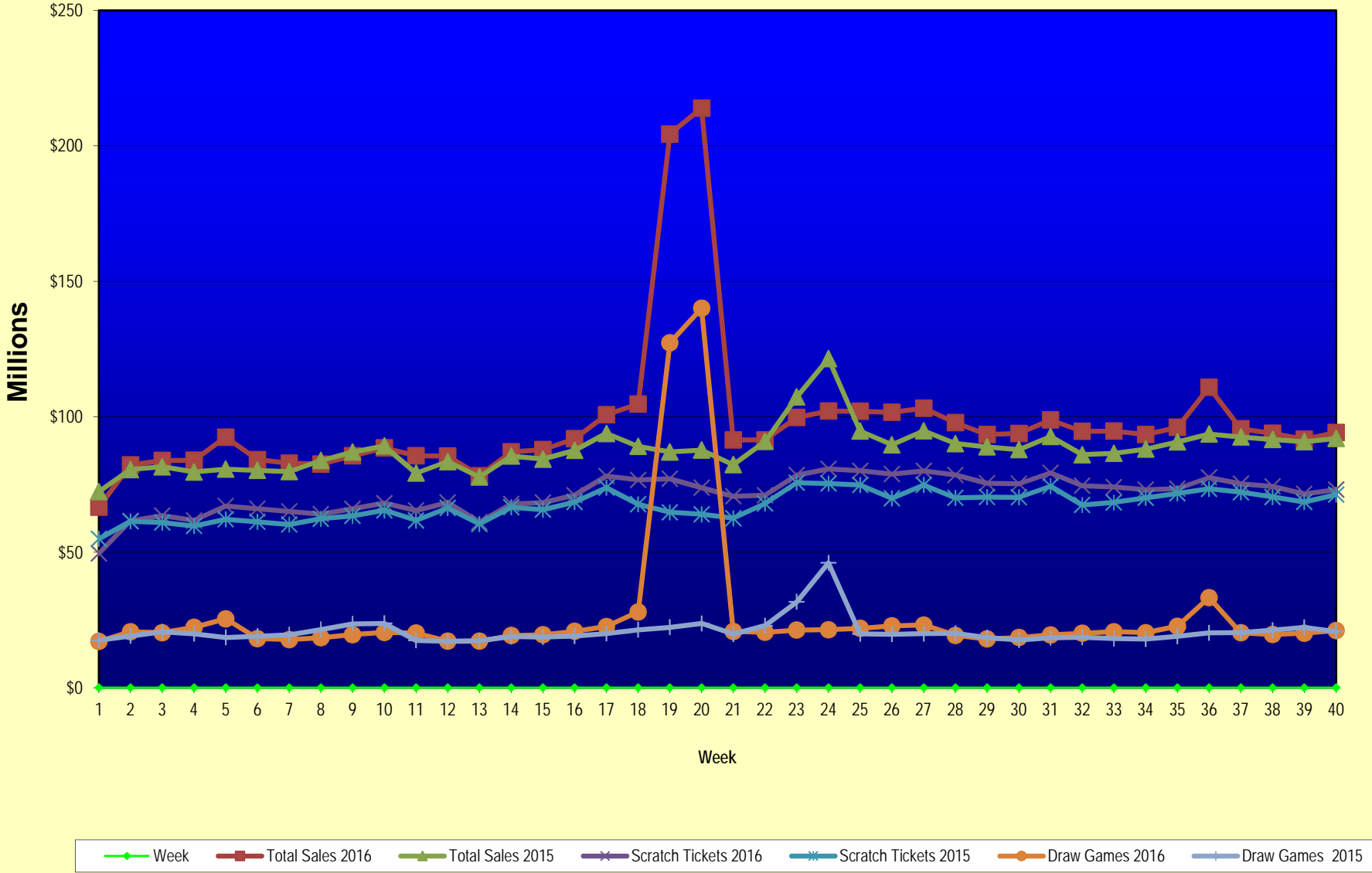
Texas Lottery Commission
Fiscal Year Over Year Change in Sales
Unaudited
FY 2016 Compared to FY 2015

			SCRATCH TICKETS				DRAW GAMES				TOTAL SALES			
FY 2016			FY 2016	FY 2015	Difference	% change - Cumulative Sales	FY 2016	FY 2015	Difference	% change - Cumulative Sales	FY 2016	FY 2015	Difference	% change - Cumulative Sales
Week	Week	Ending												
43	6/25/2016			\$65,282,276				\$16,873,368				\$82,155,644		
44	7/2/2016			\$67,757,752				\$18,007,540				\$85,765,292		
45	7/9/2016			\$64,718,254				\$18,203,985				\$82,922,239		
46	7/16/2016			\$64,957,977				\$18,792,785				\$83,750,762		
47	7/23/2016			\$62,541,241				\$18,229,965				\$80,771,206		
48	7/30/2016			\$66,468,460				\$17,742,489				\$84,210,949		
49	8/6/2016			\$62,412,598				\$17,331,374				\$79,743,972		
50	8/13/2016			\$62,089,389				\$17,501,599				\$79,590,988		
51	8/20/2016			\$62,437,148				\$17,779,458				\$80,216,606		
52	8/27/2016			\$61,403,206				\$18,529,560				\$79,932,766		
	8/31/2016 **			\$17,309,621				\$3,279,958				\$20,589,579		
Total thru Current Week			\$2,856,117,806	\$2,691,446,773	\$164,671,033	6.1%	\$1,057,351,154	\$831,509,602	\$225,841,552	27.2%	\$3,913,468,960	\$3,522,956,375	\$390,512,585	11.1%
Fiscal Year Total			\$2,856,117,806	\$3,481,361,812			\$1,057,351,154	\$1,048,338,613			\$3,913,468,960	\$4,529,700,425		

* FY 16 includes 5 days; FY 15 includes 6 days

** FY 16 includes 4 days; FY 15 includes 2 days

Texas Lottery Commission Fiscal Year Over Year Change in Sales



Note: Week 1 is not a full week of sales as this report is prepared on a Fiscal Year basis.

Texas Lottery Commission
Scratch Tickets by Price Point
Sales, Prize Expense, Sales Contribution and Payout Percentage With Year Over Year Changes
Unaudited

Fiscal Year	Price Point	# of Active Games	FY Sales	% of Scratch Ticket Sales	Year over Year Change in Sales	FY Prize Expense	Year over Year Change in Prize Expense	FY Sales Contribution	Year over Year Change in Contribution	Average Prize Payout %	Year over Year Change in Payout %
2015	\$1.00	22	131,705,422	4.9%		79,869,630		51,835,792		60.6%	1.2%
Through	\$2.00	33	273,626,790	10.2%		179,681,170		93,945,620		65.7%	1.3%
6/6/2015	\$3.00	15	275,547,051	10.2%		181,673,512		93,873,539		65.9%	0.5%
	\$5.00	49	828,254,160	30.8%		562,699,942		265,554,218		67.9%	0.0%
	\$10.00	17	564,492,840	21.0%		396,865,621		167,627,219		70.3%	0.0%
	\$20.00	11	486,206,260	18.1%		364,543,521		121,662,739		75.0%	0.1%
	\$50.00	4	131,614,250	4.9%		102,305,355		29,308,895		77.7%	0.1%
Total		151	\$2,691,446,773			\$1,867,638,750		\$823,808,023		69.4%	0.7%
2016	\$1.00	19	125,369,904	4.4%		75,583,822		49,786,082		60.3%	-0.4%
thru	\$2.00	33	284,102,070	9.9%		185,221,245		98,880,825		65.2%	-0.5%
6/4/2016	\$3.00	13	213,796,002	7.5%		140,832,772		72,963,230		65.9%	-0.1%
	\$5.00	55	940,739,860	32.9%		639,145,967		301,593,893		67.9%	0.0%
	\$10.00	18	572,531,920	20.0%		401,314,883		171,217,037		70.1%	-0.2%
	\$20.00	12	575,293,400	20.1%		431,130,881		144,162,519		74.9%	0.0%
	\$50.00	4	144,284,650	5.1%		112,229,733		32,054,917		77.8%	0.1%
Total		154	\$2,856,117,806			\$1,985,459,303		\$870,658,503		69.5%	0.1%
Variance	\$1.00	-3	-6,335,518		-4.8%	-4,285,809	-5.4%	-2,049,709	-4.0%	-0.35%	
2016 to	\$2.00	0	10,475,280		3.8%	5,540,075	3.1%	4,935,205	5.3%	-0.47%	
2015	\$3.00	-2	-61,751,049		-22.4%	-40,840,740	-22.5%	-20,910,309	-22.3%	-0.06%	
	\$5.00	6	112,485,700		13.6%	76,446,025	13.6%	36,039,675	13.6%	0.00%	
	\$10.00	1	8,039,080		1.4%	4,449,262	1.1%	3,589,818	2.1%	-0.21%	
	\$20.00	1	89,087,140		18.3%	66,587,360	18.3%	22,499,780	18.5%	-0.04%	
	\$50.00	0	12,670,400		9.6%	9,924,379	9.7%	2,746,022	9.4%	0.05%	
Total		3	\$164,671,033		6.1%	\$117,820,553	6.3%	\$46,850,480	5.7%	0.12%	

Notes - Scratch Ticket Variances

Texas Lottery Commission
Scratch Tickets by Price Point
Sales, Prize Expense, Sales Contribution and Payout Percentage With Year Over Year Changes
Unaudited

		FY 2016	FY 2015	Difference
Sales	\$1 - \$5	\$1,564,007,836	\$1,509,133,423	\$54,874,413
Prize Exp.	\$1 - \$5	\$1,040,783,806	\$1,003,924,254	\$36,859,552
Sales Cont.	\$1 - \$5	\$523,224,030	\$505,209,169	\$18,014,861
Prize Exp. %	\$1 - \$5	66.5%	66.5%	0.0%
		FY 2016	FY 2015	Difference
Sales	\$10 - \$50	\$1,292,109,970	\$1,182,313,350	\$109,796,620
Prize Exp.	\$10 - \$50	\$944,675,497	\$863,714,497	\$80,961,000
Sales Cont.	\$10 - \$50	\$347,434,473	\$318,598,853	\$28,835,620
Prize Exp. %	\$10 - \$50	73.1%	73.1%	0.1%
		FY 2016	FY 2015	Difference
Sales	Scratch	\$2,856,117,806	\$2,691,446,773	\$164,671,033
Prize Exp.	Scratch	\$1,985,459,303	\$1,867,638,750	\$117,820,553
Sales Cont.	Scratch	\$870,658,503	\$823,808,023	\$46,850,480
Prize Exp. %	Scratch	69.5%	69.4%	0.1%

		FY 2016	FY 2015	Difference
Sales	\$1 - \$10	\$2,136,539,756	\$2,073,626,263	\$62,913,493
Prize Exp.	\$1 - \$10	\$1,442,098,689	\$1,400,789,875	\$41,308,814
Sales Cont.	\$1 - \$10	\$694,441,067	\$672,836,388	\$21,604,679
Prize Exp. %	\$1 - \$10	67.5%	67.6%	-0.1%
		FY 2016	FY 2015	Difference
Sales	\$20 - \$50	\$719,578,050	\$617,820,510	\$101,757,540
Prize Exp.	\$20 - \$50	\$543,360,614	\$466,848,875	\$76,511,739
Sales Cont.	\$20 - \$50	\$176,217,436	\$150,971,635	\$25,245,801
Prize Exp. %	\$20 - \$50	75.5%	75.6%	-0.1%
		FY 2016	FY 2015	Difference
Sales	Scratch	\$2,856,117,806	\$2,691,446,773	\$164,671,033
Prize Exp.	Scratch	\$1,985,459,303	\$1,867,638,750	\$117,820,553
Sales Cont.	Scratch	\$870,658,503	\$823,808,023	\$46,850,480
Prize Exp. %	Scratch	69.5%	69.4%	0.1%

Texas Lottery Commission
Weekly Sales Summary
& Comparison to Previous Week
 Unaudited

	Week Ending 6/04/2016	% of Sales	Week Ending 5/28/2016	% of Sales	\$ change	% change
	<u>THIS WEEK</u>		<u>LAST WEEK</u>			
Total Sales	<u>\$94,152,659</u>		<u>\$91,712,960</u>		<u>\$2,439,699</u>	2.66%
Scratch Tickets	<u>\$73,085,109</u>	77.6%	<u>\$71,562,728</u>	78.0%	<u>\$1,522,381</u>	2.13%
Lotto	\$2,168,799	2.3%	\$2,105,898	2.3%	\$62,901	2.99%
Lotto Extra	\$413,066	0.4%	\$395,146	0.4%	\$17,920	4.54%
Pick 3	\$4,960,630	5.3%	\$4,774,370	5.2%	\$186,260	3.90%
Pick 3 Sum It Up	\$103,422	0.1%	\$103,275	0.1%	\$147	0.14%
Cash Five	\$858,482	0.9%	\$839,838	0.9%	\$18,644	2.22%
Texas Two Step	\$955,876	1.0%	\$1,078,483	1.2%	-\$122,607	-11.37%
Mega Millions	\$3,873,635	4.1%	\$3,665,087	4.0%	\$208,548	5.69%
Megaplier	\$945,394	1.0%	\$892,777	1.0%	\$52,617	5.89%
Daily 4	\$1,805,082	1.9%	\$1,743,568	1.9%	\$61,514	3.53%
Daily 4 Sum It Up	\$99,152	0.1%	\$101,106	0.1%	-\$1,954	-1.93%
Powerball	\$3,448,378	3.7%	\$3,043,928	3.3%	\$404,450	13.29%
Power Play	\$523,651	0.6%	\$469,990	0.5%	\$53,661	11.42%
All or Nothing	\$560,846	0.6%	\$548,572	0.6%	\$12,274	2.24%
Texas Triple Chance	\$351,138	0.4%	\$388,194	0.4%	-\$37,056	-9.55%
Total Draw Game Sales	<u>\$21,067,550</u>		<u>\$20,150,232</u>		<u>\$917,318</u>	4.55%

* Totals may not sum due to rounding.

Texas Lottery Commission
Weekly Sales Summary
Unaudited

SCRATCH TICKETS
TOP TEN SELLING GAMES

For the week ending: 6/04/2016

Rank	Price Point	Game	Sales (Millions)
1	\$ 20	100X THE CASH	\$ 5.040
2	\$ 5	SUPER LOTERIA	\$ 3.831
3	\$ 10	THE BIG MONEY SUPER TICKET	\$ 3.807
4	\$ 10	\$250,000 CASH CRAZE	\$ 3.764
5	\$ 5	TRIPLE WINNING 7'S	\$ 3.697
6	\$ 10	CASHWORD MULTIPLIER	\$ 3.400
7	\$ 20	HIT \$1,000,000	\$ 3.305
8	\$ 50	HIGH ROLLER CASINO ACTION	\$ 3.231
9	\$ 5	TEXAS WILD 7'S	\$ 2.658
10	\$ 10	HIT \$500,000	\$ 2.542

Texas Lottery Commission
Prize Payout Tracking Report
Unaudited

Through the week ending: 6/04/2016

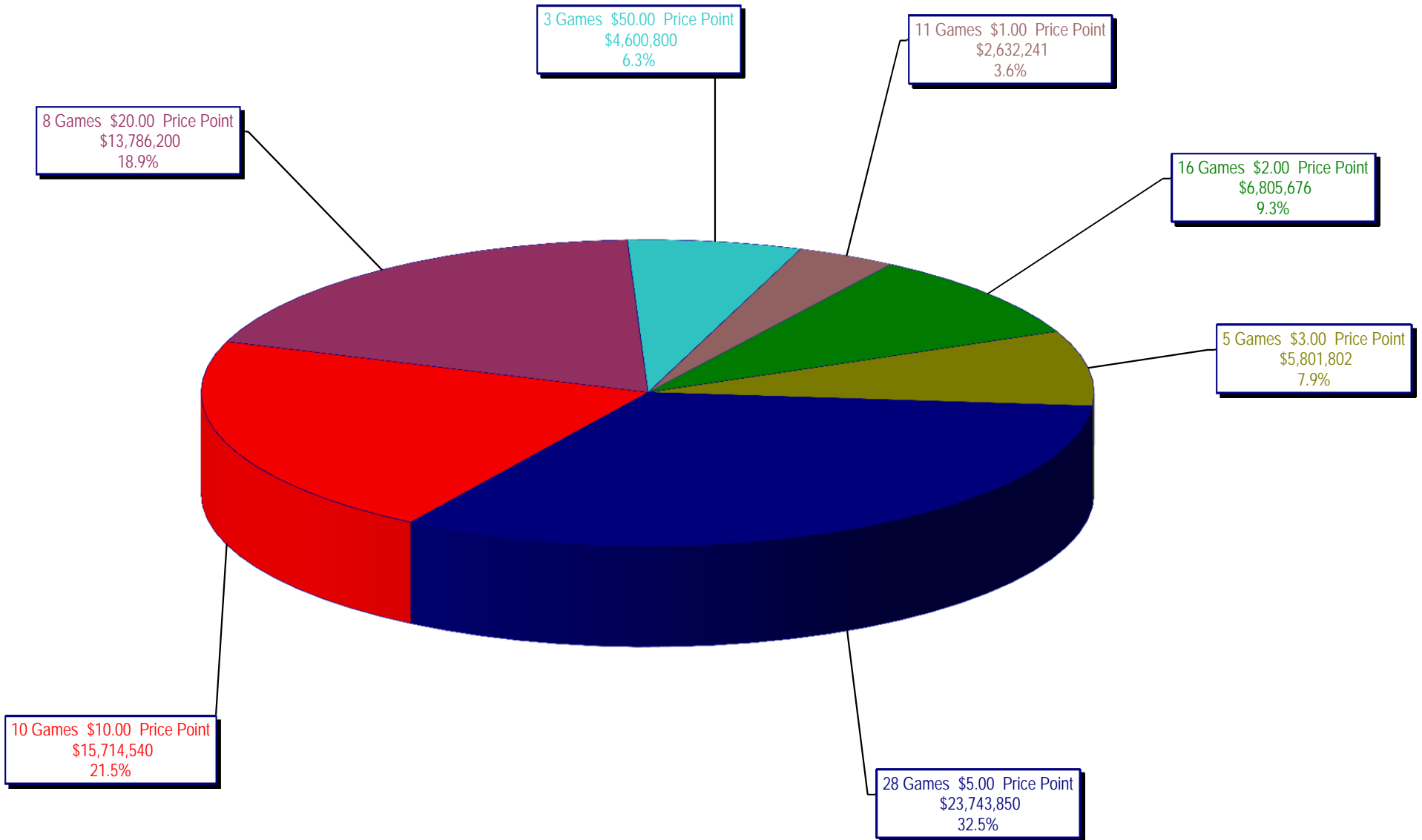
Draw Game Sales

	FY Sales Through Week Ending 6/4/2016	FY Prize Expense Through Week Ending 6/4/2016	Actual* Prize Payout	Base Payout (Prize Pool)
Lotto	\$ 94,285,902	\$ 53,095,159	56.31%	50.00%
Lotto Extra	16,596,103	8,753,478	52.74%	53.70%
Pick 3	196,338,322	98,417,730	50.13%	50.00%
Pick 3 Sum It Up	4,036,773	1,911,113	47.34%	50.00%
Cash Five	35,531,815	17,765,908	50.00%	50.00%
Texas Two Step	42,196,113	21,516,914	50.99%	50.00%
Mega Millions	100,181,341	51,182,647	51.09%	50.00%**
Megaplier	25,448,246	12,748,320	50.10%	N/A
Daily 4	69,445,051	33,318,425	47.98%	50.00%
Daily 4 Sum It Up	3,701,504	1,445,917	39.06%	50.00%
Powerball	383,415,419	191,930,995	50.06%	50.00%**
Power Play	43,148,039	21,603,743	50.07%	N/A
All or Nothing	23,741,372	12,812,488	53.97%	55.98%
Monopoly	0	(22,993)	0.00%	50.00%
Texas Triple Chance	19,285,154	11,679,591	60.56%	54.42%
Totals	\$ 1,057,351,154	\$ 538,159,434	50.90%	

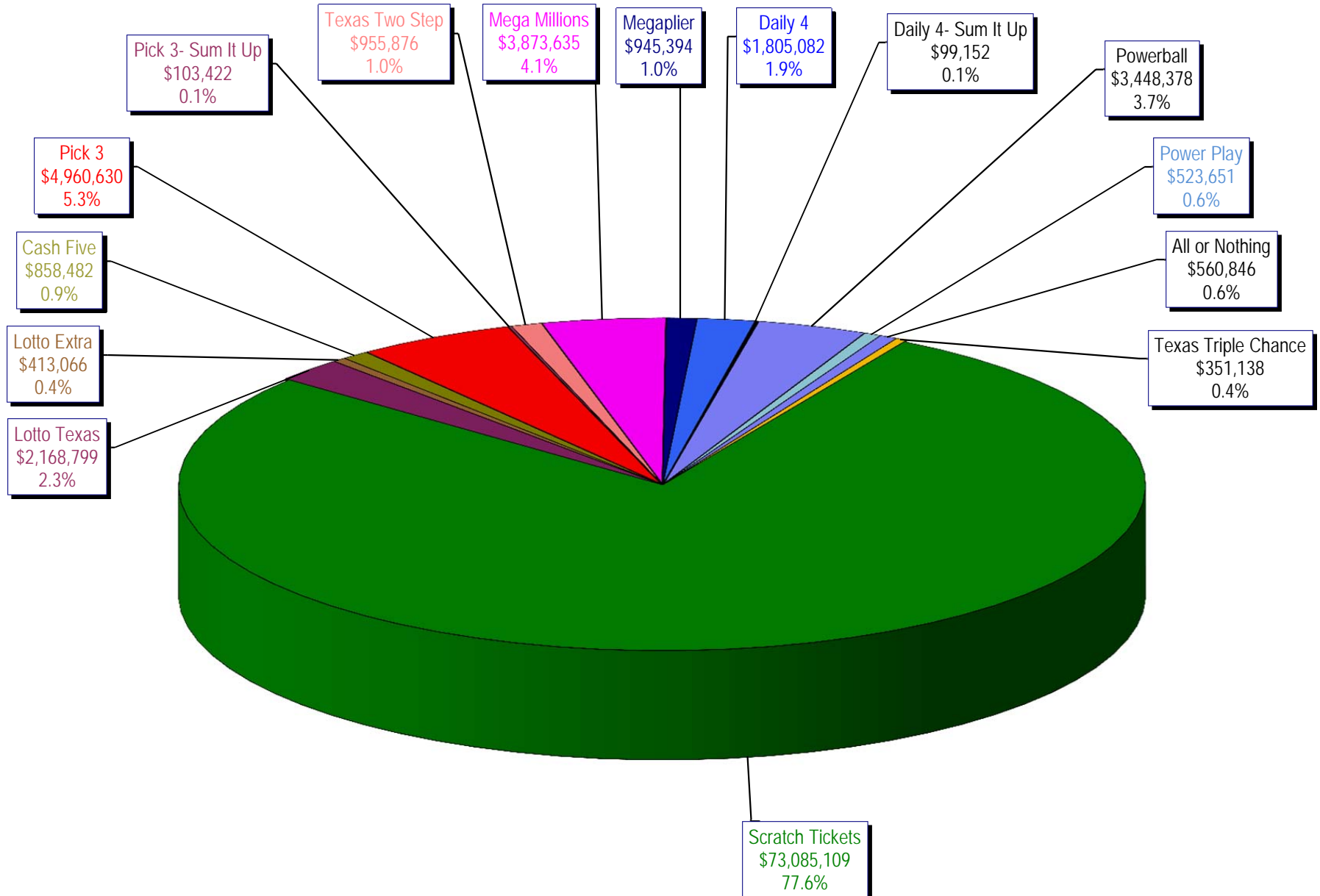
* Before Unclaimed Prizes

** Estimated; depends on # of guaranteed prizes won in Texas

Texas Lottery Commission
Scratch Ticket Sales
For the week ending 6/04/16
(Unaudited)



Texas Lottery Commission
All Game Sales
For the week ending 6/04/16
(Unaudited)



Texas Lottery Commission - Weekly Sales Summary for FY 2016 (Unaudited)

Week Ended	Scratch Tickets	New Games & Dates	Lotto Texas	Jackpot		Lotto Extra	Pick 3	Pick 3 Sum It Up	Cash Five	Texas Two Step	Jackpot		Mega Millions	Jackpot		Megaplier	Daily 4	Daily 4 Sum It Up	Powerball	Jackpot		Power Play	All or Nothing	Texas Triple Chance	Total	Per Cap.
				W	S						M	TH		T	F					W	S					
9/5/2015*	66,843,870	0	2,788,509	25	26	466,121	5,249,348	117,979	956,126	1,253,100	425	575	2,366,640	74	85	608,901	1,725,027	93,067	3,586,482	120	133	484,769	675,614		87,215,551	3.24
9/12/2015	61,566,291	1717 (\$1.N); 1718 (\$5.N); 1748 (\$10.N); 1696 (\$3.N) - 9/08/15	2,793,428	26.5	27.75	465,451	4,974,238	103,203	919,536	1,423,604	725	950	2,511,039	95	106	629,091	1,641,226	86,539	3,927,126	149	167	518,060	638,384		82,197,213	3.05
9/19/2015	63,530,657	0	2,845,557	28.25	29.5	475,307	4,715,566	95,242	928,275	854,109	200	225	1,817,155	15	20	487,946	1,647,829	81,483	5,082,782	185	208	639,614	656,388		83,857,910	3.11
9/26/2015	61,731,400	1720 (\$2.N); 1721 (\$5.N); 1715 (\$5.N) - 9/21/15	2,815,638	30	30.75	468,584	4,735,629	97,118	924,334	1,048,752	300	450	1,860,438	25	31	499,201	1,628,350	82,200	6,648,092	235	267	790,427	653,528		83,983,690	3.12
10/3/2015	67,048,415	0	3,034,763	31.5	32.25	502,043	4,925,789	100,522	919,217	1,347,552	600	725	2,053,673	39	47	539,290	1,662,320	88,291	8,036,576	301	40	884,785	616,594	725,376	92,485,206	3.43
10/10/2015	66,049,706	1722 (\$1.N); 1723 (\$5.N); 1711 (\$20.N) - 10/05/15	2,175,801	5	5.25	366,506	4,803,855	97,005	899,614	1,141,865	925	200	2,113,720	55	65	535,411	1,636,542	86,150	2,572,748	50	60	372,480	593,616	743,664	84,188,683	3.12
10/17/2015	65,073,593	0	2,133,286	5	5	358,076	4,629,752	92,453	876,040	824,622	200	225	2,286,703	75	84	568,477	1,576,323	79,576	2,638,956	70	80	377,157	580,870	754,124	82,850,007	3.07
10/24/2015	64,087,437	1724 (\$2.N); 1769 (\$5.N); 1726 (\$10.N) - 10/19/15	2,099,176	5.25	5.5	358,217	4,515,381	92,071	860,960	991,931	300	425	2,600,946	93	105	626,019	1,553,788	80,225	2,946,077	90	100	411,192	562,378	752,104	82,537,901	3.06
10/31/2015	66,025,374	0	2,165,101	5.75	6	368,559	4,653,961	91,360	873,751	944,275	550	200	2,945,749	117	129	695,705	1,621,009	85,560	3,327,954	110	127	455,266	573,258	766,642	85,593,524	3.18
11/7/2015	68,137,192	1727 (\$1.N); 1728 (\$2.N); 1729 (\$5.N) - 11/02/15	2,232,267	6.25	6.5	379,508	4,977,693	96,887	891,111	911,796	225	300	3,416,380	144	164	795,028	1,688,298	86,418	3,071,581	142	40	425,312	599,980	826,093	88,535,543	3.28
11/14/2015	65,449,428	0	2,185,621	6.75	7	373,102	4,726,211	93,030	870,215	1,087,101	425	575	4,139,462	180	200	938,757	1,614,727	82,536	2,437,413	50	60	357,760	574,596	688,852	85,618,810	3.18
11/21/2015	68,364,421	1730 (\$2.N); 1783 (\$2.N); 1731 (\$5.N) - 11/16/15 1778 (\$2.N) - 11/18/15	2,173,857	7.25	7.5	369,519	4,674,293	88,988	862,630	825,054	200	225	1,830,909	15	20	489,485	1,632,096	82,077	2,553,907	70	80	370,594	586,348	634,850	85,539,027	3.17
11/28/2015	61,091,628	0	2,113,171	7.75	8.25	364,947	4,523,108	87,438	825,047	904,825	300	400	1,785,419	25	31	478,828	1,591,416	82,363	2,886,666	90	100	406,251	546,614	572,902	78,260,621	2.90
12/5/2015	67,830,827	1733 (\$5.N) - 12/5/15	2,245,481	8.75	9.5	385,346	5,020,926	94,445	898,598	957,116	525	200	2,073,099	39	47	545,451	1,789,318	94,198	3,432,248	110	127	467,917	603,222	645,054	87,083,245	3.23
12/12/2015	68,324,452	1751 (\$1.N); 1780 (\$2.N); 1784 (\$5.N) - 12/07/15	2,281,004	10.25	10.75	391,281	4,980,397	94,549	877,611	815,777	225	200	2,160,601	57	66	555,974	1,746,314	86,684	3,835,044	145	164	508,111	592,212	603,850	87,853,860	3.26
12/19/2015	71,041,258	0	2,326,771	11.5	12.25	400,223	4,980,685	95,154	879,423	888,674	225	300	2,322,855	74	85	592,792	1,796,682	92,401	4,707,013	180	202	600,420	573,754	567,994	91,866,098	3.41
12/26/2015	78,125,965	1736 (\$5.N); 1740 (\$20.N) - 12/21/15 1789 (\$3.N) - 12/22/15	2,422,285	12.75	13.5	417,003	4,863,405	91,522	860,361	1,106,519	400	550	2,624,875	94	104	637,157	1,725,445	87,146	5,941,638	227	255	728,720	548,978	531,364	100,712,382	3.74
1/2/2016	76,712,975	0	2,598,993	14.25	15.25	446,634	4,857,347	95,570	883,605	857,640	200	225	3,175,442	117	130	756,602	1,731,866	91,457	10,213,886	300	334	1,168,791	559,472	535,576	104,685,855	3.88
1/9/2016	77,136,541	1738 (\$1.N); 1735 (\$2.N); 1737 (\$10.N) - 1/04/16	3,569,884	16	17	580,778	4,782,398	102,725	899,480	1,029,458	300	425	4,896,815	145	165	1,100,345	1,668,434	91,670	98,440,136	500	900	8,915,982	589,972	621,402	204,426,019	7.58
1/16/2016	73,858,865	0	3,543,250	18	19	585,402	4,666,496	105,064	901,254	834,973	200	225	2,581,249	15	22	661,350	1,658,823	94,886	112,171,706	1.5	40	11,071,288	613,248	615,138	213,962,991	7.94
1/23/2016	70,665,700	1747 (\$5.N); 1790 (\$5.N); 1786 (\$3.N) - 1/18/16	2,864,110	19.5	20.25	492,400	4,696,016	104,467	945,128	846,809	200	225	2,033,849	30	39	535,675	1,742,249	90,096	4,651,362	50	60	646,626	622,838	510,120	91,447,445	3.39
1/30/2016	71,051,685	0	2,291,772	5	5.25	405,017	4,976,880	103,912	948,507	850,282	200	225	2,106,150	48	56	559,777	1,825,583	100,694	4,470,995	75	96	639,118	647,428	507,286	91,485,086	3.39
2/6/2016	78,458,428	1700 (\$1.N); 1702 (\$5.N); 1745 (\$20.N) - 2/01/16	2,298,351	5.5	5.75	412,187	5,095,888	106,149	980,363	1,020,644	300	425	2,198,934	63	71	579,927	1,833,296	99,283	4,823,108	112	136	683,319	650,426	492,926	99,733,228	3.70
2/13/2016	80,754,850	0	2,240,742	6	6.25	405,702	5,332,774	111,268	938,662	848,340	200	225	2,236,840	80	87	592,165	1,918,261	104,613	4,856,599	157	176	684,114	643,040	478,800	102,146,769	3.79
2/20/2016	80,078,271	1677 (\$2.N); 1625 (\$5.N) - 2/15/16	2,219,682	6.5	6.75	405,997	5,261,755	112,333	922,062	1,042,317	300	425	2,348,026	94	104	612,581	1,903,450	105,785	5,158,458	189	212	714,054	637,966	466,916	101,989,653	3.78

