



*WEEKLY SALES SUMMARY*

Unaudited

**Week Ending: 06/06/2009**

Texas Lottery Commission  
Fiscal Year to Date Sales Comparison  
Unaudited

Through the week ending 06/06/2009 (40 weeks)

Sales by Game	FY 2007 *	FY 2008 **	FY 2009	\$ Change		% Change	
				FY 2009 to FY 2007	FY 2009 to FY 2008	FY 2009 to FY 2007	FY 2009 to FY 2008
Instant	\$ 2,223,190,372	\$ 2,169,947,023	\$ 2,143,226,762	\$ -79,963,610	\$ -26,720,261	-3.6%	-1.2%
Lotto Texas	184,915,503	157,991,791	146,000,505	-38,914,998	-11,991,286	-21.0%	-7.6%
Pick 3	241,868,020	221,328,623	221,456,596	-20,411,424	127,974	-8.4%	0.1%
Pick 3 Sum It Up	-	4,976,333	4,648,279	4,648,279	-328,054	-	-6.6%
Cash 5	67,455,010	58,750,442	54,996,417	-12,458,593	-3,754,025	-18.5%	-6.4%
Texas Two Step	38,905,878	36,538,797	39,155,842	249,964	2,617,045	0.6%	7.2%
Mega Millions	137,458,137	135,574,134	148,823,237	11,365,100	13,249,103	8.3%	9.8%
Megaplier	32,280,551	31,928,306	33,835,035	1,554,484	1,906,729	4.8%	6.0%
Daily 4	-	32,706,543	35,330,591	35,330,591	2,624,048	-	8.0%
Daily 4 Sum It Up	-	6,970,220	4,213,781	4,213,781	-2,756,439	-	-39.5%
<b>Total</b>	<b>\$ 2,926,073,471</b>	<b>\$ 2,856,712,211</b>	<b>\$ 2,831,687,044</b>	<b>\$ -94,386,427</b>	<b>\$ -25,025,167</b>	<b>-3.2%</b>	<b>-0.9%</b>

\* 3 extra days in 2007 \*\* 2 extra days in 2008

Texas Lottery Commission  
Fiscal Year Over Year Change in Sales  
Unaudited  
FY 2009 Compared to FY 2008

Week	FY 2009 Week Ending	INSTANT TICKETS				ON-LINE GAMES				TOTAL SALES			
		FY 2009	FY 2008	Difference	% change - Cumulative Sales	FY 2009	FY 2008	Difference	% change - Cumulative Sales	FY 2009	FY 2008	Difference	% change - Cumulative Sales
1	9/6/2008**	\$44,890,104	\$62,376,229	(\$17,486,125)	-28.0%	\$14,722,011	\$19,372,224	(\$4,650,213)	-24.0%	\$59,612,115	\$81,748,453	(\$22,136,338)	-27.1%
2	9/13/2008	\$46,309,551	\$52,458,866	(\$6,149,315)	-20.6%	\$13,704,860	\$16,926,163	(\$3,221,303)	-21.7%	\$60,014,411	\$69,385,029	(\$9,370,618)	-20.8%
3	9/20/2008	\$42,923,171	\$49,998,934	(\$7,075,763)	-18.6%	\$12,291,263	\$15,792,283	(\$3,501,020)	-21.8%	\$55,214,434	\$65,791,217	(\$10,576,783)	-19.4%
4	9/27/2008	\$47,042,801	\$49,894,175	(\$2,851,374)	-15.6%	\$14,222,339	\$14,800,514	(\$578,175)	-17.9%	\$61,265,140	\$64,694,689	(\$3,429,549)	-16.2%
5	10/4/2008	\$50,747,162	\$53,486,863	(\$2,739,701)	-13.5%	\$15,784,472	\$16,618,430	(\$833,958)	-15.3%	\$66,531,634	\$70,105,293	(\$3,573,659)	-14.0%
6	10/11/2008	\$49,763,789	\$50,918,020	(\$1,154,231)	-11.7%	\$15,622,498	\$15,601,410	\$21,088	-12.9%	\$65,386,287	\$66,519,430	(\$1,133,143)	-12.0%
7	10/18/2008	\$49,299,053	\$50,532,253	(\$1,233,200)	-10.5%	\$15,167,940	\$15,682,666	(\$514,726)	-11.6%	\$64,466,993	\$66,214,919	(\$1,747,926)	-10.7%
8	10/25/2008	\$49,977,581	\$50,347,450	(\$369,869)	-9.3%	\$14,525,843	\$15,586,516	(\$1,060,673)	-11.0%	\$64,503,424	\$65,933,966	(\$1,430,542)	-9.7%
9	11/1/2008	\$50,346,542	\$53,953,733	(\$3,607,191)	-9.0%	\$14,838,845	\$16,775,983	(\$1,937,139)	-11.1%	\$65,185,387	\$70,729,716	(\$5,544,330)	-9.5%
10	11/8/2008	\$54,860,087	\$53,635,090	\$1,224,997	-7.9%	\$16,057,069	\$15,912,791	\$144,278	-9.9%	\$70,917,156	\$69,547,881	\$1,369,275	-8.3%
11	11/15/2008	\$53,484,812	\$51,254,401	\$2,230,411	-6.8%	\$15,829,819	\$15,797,076	\$32,744	-9.0%	\$69,314,631	\$67,051,477	\$2,263,155	-7.3%
12	11/22/2008	\$52,806,511	\$50,897,817	\$1,908,694	-5.9%	\$16,460,748	\$15,801,720	\$659,028	-7.9%	\$69,267,259	\$66,699,537	\$2,567,722	-6.4%
13	11/29/2008	\$52,199,741	\$53,913,115	(\$1,713,374)	-5.7%	\$17,397,576	\$17,055,505	\$342,072	-7.1%	\$69,597,317	\$70,968,620	(\$1,371,303)	-6.0%
14	12/6/2008	\$56,731,851	\$55,702,697	\$1,029,154	-5.1%	\$20,363,789	\$17,900,717	\$2,463,073	-5.5%	\$77,095,640	\$73,603,414	\$3,492,227	-5.2%
15	12/13/2008	\$54,109,617	\$53,703,516	\$406,101	-4.7%	\$22,952,228	\$17,820,841	\$5,131,387	-3.0%	\$77,061,845	\$71,524,357	\$5,537,488	-4.3%
16	12/20/2008	\$55,777,328	\$57,592,769	(\$1,815,441)	-4.6%	\$15,833,517	\$17,436,233	(\$1,602,716)	-3.4%	\$71,610,845	\$75,029,002	(\$3,418,157)	-4.3%
17	12/27/2008	\$57,597,885	\$57,696,003	(\$98,118)	-4.3%	\$15,851,771	\$14,743,680	\$1,108,091	-2.9%	\$73,449,656	\$72,439,683	\$1,009,973	-4.0%
18	1/3/2009	\$57,582,115	\$57,935,952	(\$353,837)	-4.1%	\$16,900,028	\$15,704,450	\$1,195,578	-2.3%	\$74,482,143	\$73,640,402	\$841,741	-3.7%
19	1/10/2009	\$54,250,945	\$55,360,542	(\$1,109,597)	-4.0%	\$16,203,220	\$15,691,540	\$511,680	-2.0%	\$70,454,165	\$71,052,082	(\$597,917)	-3.5%
20	1/17/2009	\$51,625,339	\$54,920,166	(\$3,294,827)	-4.1%	\$15,701,605	\$16,259,669	(\$558,064)	-2.1%	\$67,326,944	\$71,179,835	(\$3,852,891)	-3.6%
21	1/24/2009	\$52,789,573	\$54,439,890	(\$1,650,317)	-4.1%	\$15,897,473	\$16,691,724	(\$794,251)	-2.2%	\$68,687,046	\$71,131,614	(\$2,444,568)	-3.6%
22	1/31/2009	\$55,453,471	\$57,464,382	(\$2,010,911)	-4.0%	\$16,908,272	\$17,968,227	(\$1,059,955)	-2.4%	\$72,361,743	\$75,432,609	(\$3,070,866)	-3.7%
23	2/7/2009	\$62,247,711	\$60,715,019	\$1,532,692	-3.7%	\$18,354,314	\$20,097,338	(\$1,743,025)	-2.7%	\$80,602,025	\$80,812,357	(\$210,333)	-3.5%
24	2/14/2009	\$60,509,056	\$57,093,143	\$3,415,913	-3.3%	\$19,218,078	\$22,179,908	(\$2,961,831)	-3.3%	\$79,727,134	\$79,273,051	\$454,083	-3.3%
25	2/21/2009	\$59,194,623	\$57,627,047	\$1,567,576	-3.0%	\$21,098,199	\$27,230,539	(\$6,132,340)	-4.5%	\$80,292,822	\$84,857,586	(\$4,564,764)	-3.4%
26	2/28/2009	\$58,857,216	\$55,591,667	\$3,265,549	-2.7%	\$24,116,924	\$17,016,118	\$7,100,806	-2.8%	\$82,974,140	\$72,607,785	\$10,366,355	-2.7%
27	3/7/2009	\$59,552,257	\$56,837,481	\$2,714,776	-2.4%	\$23,995,136	\$16,690,193	\$7,304,943	-1.1%	\$83,547,393	\$73,527,674	\$10,019,719	-2.1%
28	3/14/2009	\$53,754,084	\$54,587,112	(\$833,028)	-2.4%	\$18,769,831	\$16,448,165	\$2,321,667	-0.6%	\$72,523,915	\$71,035,277	\$1,488,639	-1.9%
29	3/21/2009	\$52,581,107	\$53,098,937	(\$517,830)	-2.3%	\$15,903,038	\$16,639,184	(\$736,146)	-0.7%	\$68,484,145	\$69,738,121	(\$1,253,976)	-1.9%
30	3/28/2009	\$52,560,961	\$53,933,689	(\$1,372,728)	-2.3%	\$16,094,933	\$17,698,625	(\$1,603,692)	-1.0%	\$68,655,894	\$71,632,314	(\$2,976,420)	-2.0%
31	4/4/2009	\$56,249,759	\$57,598,982	(\$1,349,223)	-2.3%	\$17,357,002	\$17,665,411	(\$308,409)	-1.0%	\$73,606,761	\$75,264,393	(\$1,657,632)	-2.0%
32	4/11/2009	\$54,440,987	\$53,954,185	\$486,802	-2.2%	\$17,660,600	\$15,860,784	\$1,799,816	-0.7%	\$72,101,587	\$69,814,969	\$2,286,618	-1.9%
33	4/18/2009	\$52,755,834	\$53,946,736	(\$1,190,902)	-2.2%	\$18,469,585	\$16,452,676	\$2,016,909	-0.3%	\$71,225,419	\$70,399,412	\$826,007	-1.8%
34	4/25/2009	\$51,450,968	\$51,533,006	(\$82,038)	-2.2%	\$20,216,898	\$16,873,949	\$3,342,950	0.3%	\$71,667,866	\$68,406,955	\$3,260,912	-1.6%
35	5/2/2009	\$52,327,090	\$53,250,568	(\$923,478)	-2.2%	\$23,520,573	\$18,202,103	\$5,318,471	1.2%	\$75,847,663	\$71,452,671	\$4,394,993	-1.4%
36	5/9/2009	\$53,214,412	\$54,060,849	(\$846,437)	-2.1%	\$16,241,207	\$18,422,562	(\$2,181,355)	0.8%	\$69,455,619	\$72,483,411	(\$3,027,792)	-1.4%
37	5/16/2009	\$50,785,227	\$54,010,641	(\$3,225,414)	-2.2%	\$15,990,544	\$20,728,360	(\$4,737,816)	0.0%	\$66,775,771	\$74,739,001	(\$7,963,230)	-1.7%
38	5/23/2009	\$56,567,077	\$50,377,032	\$6,190,045	-1.9%	\$15,874,447	\$15,461,384	\$413,063	0.1%	\$72,441,524	\$65,838,416	\$6,603,108	-1.4%
39	5/30/2009	\$55,359,239	\$49,545,080	\$5,814,159	-1.6%	\$16,040,196	\$15,175,370	\$864,826	0.2%	\$71,399,435	\$64,720,450	\$6,678,985	-1.1%
40	6/6/2009	\$60,250,125	\$53,702,986	\$6,547,139	-1.2%	\$16,301,599	\$15,982,166	\$319,434	0.2%	\$76,551,724	\$69,685,152	\$6,866,573	-0.9%

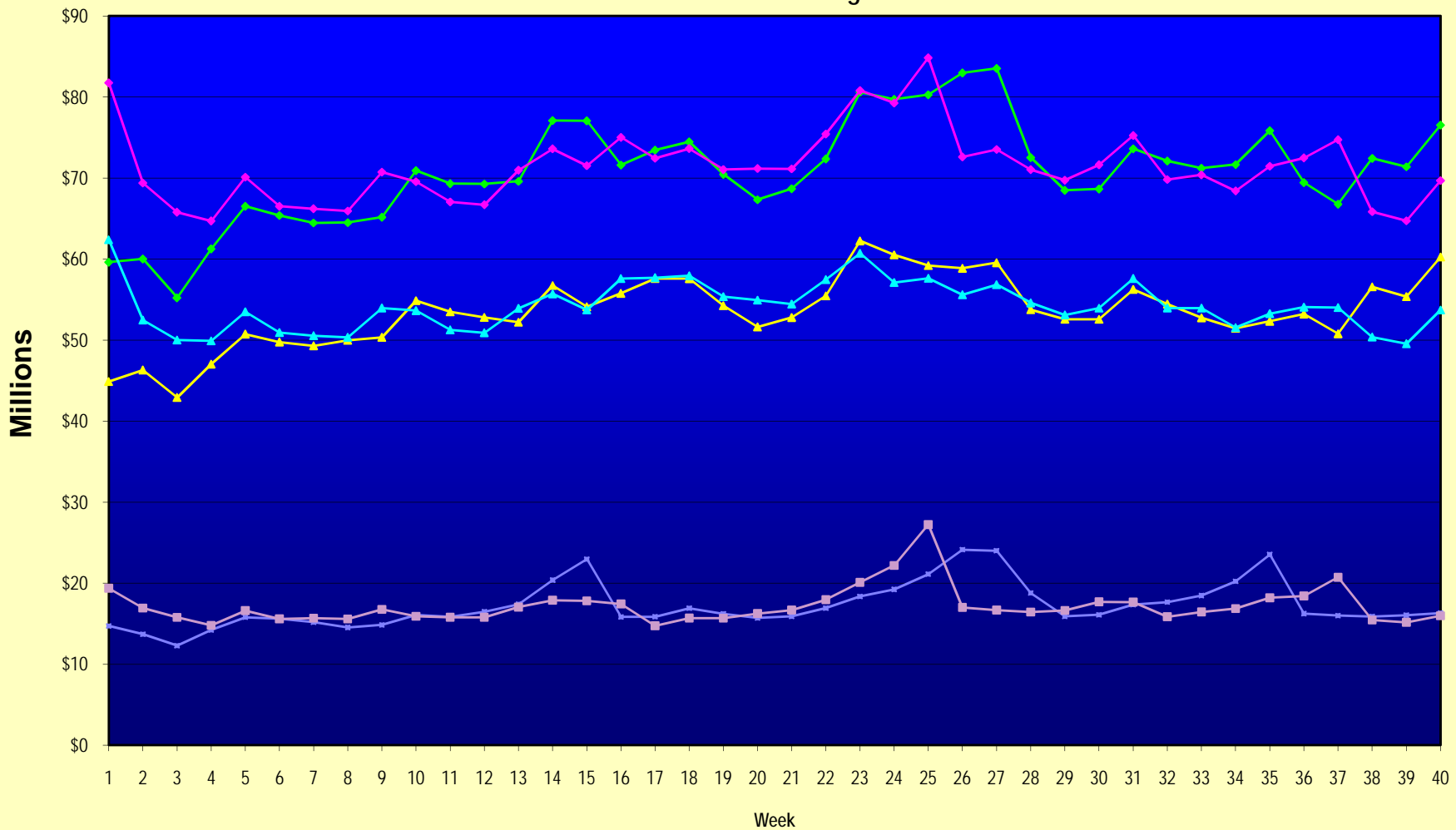
Note: Week 1 is not a full week of sales as this report is prepared on a Fiscal Year basis.

Texas Lottery Commission  
Fiscal Year Over Year Change in Sales  
Unaudited  
FY 2009 Compared to FY 2008

Week	FY 2009 Week Ending	INSTANT TICKETS				ON-LINE GAMES				TOTAL SALES			
		FY 2009	FY 2008	Difference	% change - Cumulative Sales	FY 2009	FY 2008	Difference	% change - Cumulative Sales	FY 2009	FY 2008	Difference	% change - Cumulative Sales
41	6/13/2009		\$51,171,483				\$16,589,087				\$67,760,570		
42	6/20/2009		\$50,650,362				\$15,728,484				\$66,378,846		
43	6/27/2009		\$49,258,266				\$15,250,905				\$64,509,171		
44	7/4/2009		\$53,393,355				\$16,270,619				\$69,663,974		
45	7/11/2009		\$53,127,756				\$16,914,922				\$70,042,678		
46	7/18/2009		\$51,593,146				\$17,752,738				\$69,345,884		
47	7/25/2009		\$49,902,181				\$16,706,145				\$66,608,326		
48	8/1/2009		\$49,605,420				\$16,254,383				\$65,859,803		
49	8/8/2009		\$50,961,907				\$16,770,496				\$67,732,403		
50	8/15/2009		\$49,452,511				\$16,749,487				\$66,201,998		
51	8/22/2009		\$49,249,518				\$17,286,302				\$66,535,820		
52	8/29/2009		\$49,468,928				\$18,109,997				\$67,578,925		
53	9/5/2009		\$6,054,239				\$493,109				\$6,547,348		
Total thru Current Week		\$2,143,226,762	\$2,169,947,023	(\$26,720,261)	-1.2%	\$688,460,282	\$686,765,188	\$1,695,094	0.2%	\$2,831,687,044	\$2,856,712,211	(\$25,025,167)	-0.9%
Fiscal Year Total		\$2,143,226,762	\$2,783,836,095			\$688,460,282	\$887,641,858			\$2,831,687,044	\$3,671,477,953		

\*\* FY 2009 includes 6 days; FY 2008 includes 8 days  
FY 2009 average daily sales are \$9,242,258. Two days at average daily sales are \$18,484,516.

### Texas Lottery Commission Fiscal Year Over Year Change in Sales



◆ Total Sales 2009    
 ◆ Total Sales 2008    
 ▲ Instant Tickets 2009    
 ▲ Instant Tickets 2008    
 ■ On-Line Games 2009    
 ■ On-Line Games 2008

Note: Week 1 is not a full week of sales as this report is prepared on a Fiscal Year basis.

Texas Lottery Commission  
Instant Tickets by Price Point  
Sales, Prize Expense, Sales Contribution and Payout Percentage With Year Over Year Changes  
Unaudited

Fiscal Year	Price Point	# of Active Games	FY Sales	% of Instant Ticket Sales	Year over Year Change in Sales	FY Prize Expense	Year over Year Change in Prize Expense	FY Sales Contribution	Year over Year Change in Contribution	Average Prize Payout %	Year over Year Change in Payout %
2008	\$1.00	44	179,471,127	8.3%		108,611,264		70,859,863		60.5%	0.7%
thru	\$2.00	53	361,921,920	16.7%		235,681,241		126,240,679		65.1%	0.4%
6/7/2008	\$3.00	17	193,429,998	8.9%		127,174,041		66,255,957		65.7%	-0.1%
	\$5.00	47	600,488,986	27.7%		407,884,274		192,604,712		67.9%	-0.1%
	\$7.00	12	123,665,171	5.7%		84,103,175		39,561,996		68.0%	0.1%
	\$10.00	19	325,664,236	15.0%		227,829,944		97,834,292		70.0%	-0.8%
	\$20.00	9	164,883,280	7.6%		118,462,979		46,420,301		71.8%	-0.2%
	\$25.00	2	51,800,625	2.4%		37,610,762		14,189,863		72.6%	0.3%
	\$30.00	3	49,801,180	2.3%		36,038,955		13,762,225		72.4%	0.1%
	\$50.00	2	118,820,500	5.5%		85,727,011		33,093,489		72.1%	0.0%
<b>Total</b>		<b>208</b>	<b>\$2,169,947,023</b>			<b>\$1,469,123,647</b>		<b>\$700,823,376</b>		<b>67.7%</b>	<b>0.3%</b>
2009	\$1.00	43	186,349,141	8.7%		112,045,449		74,303,692		60.1%	0.0%
thru	\$2.00	40	360,379,270	16.8%		234,839,115		125,540,155		65.2%	-0.2%
6/6/2009	\$3.00	17	223,520,934	10.4%		146,637,170		76,883,764		65.6%	-0.2%
	\$5.00	45	657,474,314	30.7%		447,144,060		210,330,254		68.0%	0.1%
	\$7.00	8	110,474,448	5.2%		75,130,548		35,343,900		68.0%	0.0%
	\$10.00	18	299,787,440	14.0%		209,745,560		90,041,880		70.0%	0.0%
	\$20.00	9	199,455,160	9.3%		143,981,842		55,473,318		72.2%	0.6%
	\$25.00	1	2,372,325	0.1%		1,725,527		646,798		72.7%	0.2%
	\$30.00	3	10,023,630	0.5%		7,263,494		2,760,136		72.5%	0.1%
	\$50.00	4	93,390,100	4.4%		68,923,481		24,466,619		73.8%	2.3%
<b>Total</b>		<b>188</b>	<b>\$2,143,226,762</b>			<b>\$1,447,436,245</b>		<b>\$695,790,517</b>		<b>67.5%</b>	<b>-0.2%</b>
Variance	\$1.00	-1	6,878,014		3.8%	3,434,185	3.2%	3,443,829	4.9%	-0.39%	
2009 to	\$2.00	-13	-1,542,650		-0.4%	-842,126	-0.4%	-700,524	-0.6%	0.05%	
2008	\$3.00	0	30,090,936		15.6%	19,463,129	15.3%	10,627,807	16.0%	-0.14%	
	\$5.00	-2	56,985,328		9.5%	39,259,785	9.6%	17,725,543	9.2%	0.08%	
	\$7.00	-4	-13,190,723		-10.7%	-8,972,627	-10.7%	-4,218,096	-10.7%	0.00%	
	\$10.00	-1	-25,876,796		-7.9%	-18,084,384	-7.9%	-7,792,412	-8.0%	0.01%	
	\$20.00	0	34,571,880		21.0%	25,518,862	21.5%	9,053,018	19.5%	0.34%	
	\$25.00	-1	-49,428,300		-95.4%	-35,885,235	-95.4%	-13,543,065	-95.4%	0.13%	
	\$30.00	0	-39,777,550		-79.9%	-28,775,461	-79.8%	-11,002,089	-79.9%	0.10%	
	\$50.00	2	-25,430,400		-21.4%	-16,803,530	-19.6%	-8,626,870	-26.1%	1.65%	
<b>Total</b>		<b>-20</b>	<b>-\$26,720,261</b>		<b>-1.2%</b>	<b>-\$21,687,402</b>	<b>-1.5%</b>	<b>-\$5,032,855</b>	<b>-0.7%</b>	<b>-0.17%</b>	

Texas Lottery Commission  
**Instant Tickets by Price Point**  
**Sales, Prize Expense, Sales Contribution and Payout Percentage With Year Over Year Changes**  
 Unaudited

Notes - Instant Ticket Variances

		FY 2009		FY 2008		Difference
Sales	\$1 - \$7		\$1,538,198,107		\$1,458,977,202	\$79,220,905
Prize Exp.	\$1 - \$7		\$1,015,796,342		\$963,453,995	\$52,342,346
Sales Cont.	\$1 - \$7		\$522,401,765		\$495,523,207	\$26,878,559
Prize Exp. %	\$1 - \$7		66.0%		66.0%	0.0%
		FY 2009		FY 2008		Difference
Sales	\$10 - \$50		\$605,028,655		\$710,969,821	-\$105,941,166
Prize Exp.	\$10 - \$50		\$431,639,903		\$505,669,651	-\$74,029,748
Sales Cont.	\$10 - \$50		\$173,388,752		\$205,300,170	-\$31,911,418
Prize Exp. %	\$10 - \$50		71.3%		71.1%	0.2%
		FY 2009		FY 2008		Difference
Sales	Instant		\$2,143,226,762		\$2,169,947,023	-\$26,720,261
Prize Exp.	Instant		\$1,447,436,245		\$1,469,123,647	-\$21,687,402
Sales Cont.	Instant		\$695,790,517		\$700,823,376	-\$5,032,859
Prize Exp. %	Instant		67.5%		67.7%	-0.2%

		FY 2009		FY 2008		Difference
Sales	\$1 - \$10		\$1,837,985,547		\$1,784,641,438	\$53,344,109
Prize Exp.	\$1 - \$10		\$1,225,541,902		\$1,191,283,939	\$34,257,963
Sales Cont.	\$1 - \$10		\$612,443,645		\$593,357,499	\$19,086,146
Prize Exp. %	\$1 - \$10		66.7%		66.8%	-0.1%
		FY 2009		FY 2008		Difference
Sales	\$20 - \$50		\$305,241,215		\$385,305,585	-\$80,064,370
Prize Exp.	\$20 - \$50		\$221,894,343		\$277,839,708	-\$55,945,365
Sales Cont.	\$20 - \$50		\$83,346,872		\$107,465,877	-\$24,119,005
Prize Exp. %	\$20 - \$50		72.7%		72.1%	0.6%
		FY 2009		FY 2008		Difference
Sales	Instant		\$2,143,226,762		\$2,169,947,023	-\$26,720,261
Prize Exp.	Instant		\$1,447,436,245		\$1,469,123,647	-\$21,687,402
Sales Cont.	Instant		\$695,790,517		\$700,823,376	-\$5,032,859
Prize Exp. %	Instant		67.5%		67.7%	-0.2%

Texas Lottery Commission  
**Weekly Sales Summary**  
**& Comparison to Previous Week**  
 Unaudited

	Week Ending 06/06/2009		Week Ending 05/30/2009			
	<u>THIS WEEK</u>	% of Sales	<u>LAST WEEK</u>	% of Sales	<u>\$ change</u>	<u>% change</u>
Total Sales	<u>\$76,551,724</u>		<u>\$71,399,435</u>		<u>\$5,152,290</u>	7.22%
Instant Tickets	<u>\$60,250,125</u>	78.7%	<u>\$55,359,239</u>	77.5%	<u>\$4,890,886</u>	8.83%
Lotto Texas	\$3,656,108	4.8%	\$3,480,479	4.9%	\$175,629	5.05%
Pick 3	\$5,806,294	7.6%	\$5,329,740	7.5%	\$476,555	8.94%
Pick 3 Sum It Up	\$117,692	0.2%	\$108,223	0.2%	\$9,470	8.75%
Cash 5	\$1,379,840	1.8%	\$1,314,598	1.8%	\$65,242	4.96%
Texas Two Step	\$833,645	1.1%	\$1,173,008	1.6%	-\$339,363	-28.93%
Mega Millions	\$2,696,889	3.5%	\$2,871,590	4.0%	-\$174,701	-6.08%
Megaplier	\$684,660	0.9%	\$705,366	1.0%	-\$20,706	-2.94%
Daily 4	\$1,020,541	1.3%	\$957,424	1.3%	\$63,117	6.59%
Daily 4 Sum It Up	<u>\$105,931</u>	0.1%	<u>\$99,769</u>	0.1%	<u>\$6,162</u>	6.18%
Total Online Sales	<u>\$16,301,599</u>		<u>\$16,040,196</u>		<u>\$261,404</u>	1.63%

\* Totals may not sum due to rounding.



Texas Lottery Commission  
Weekly Sales Summary  
Unaudited

INSTANT TICKETS  
TOP TEN SELLING GAMES

For the Week Ending : 06/06/2009

Rank	Price Point	Game	Sales (Millions)
1	\$ 20	\$500,000,000 BLOCKBUSTER	\$ 10.533
2	\$ 5	CASH VAULT	\$ 3.351
3	\$ 3	BONUS CASHWORD	\$ 2.649
4	\$ 50	\$140,000,000 EXTREME PAYOUT	\$ 2.517
5	\$ 5	\$50,000 TREASURES	\$ 2.516
6	\$ 10	PRECIOUS JEWELS	\$ 2.334
7	\$ 5	KING OF CASH	\$ 2.064
8	\$ 10	SET FOR LIFE	\$ 2.058
9	\$ 7	\$75,000 CASINO	\$ 2.007
10	\$ 5	SAPPHIRE BLUE 5'S	\$ 1.954

Texas Lottery Commission  
Prize Payout Tracking Report  
Unaudited

Through Week Ending 06/06/2009

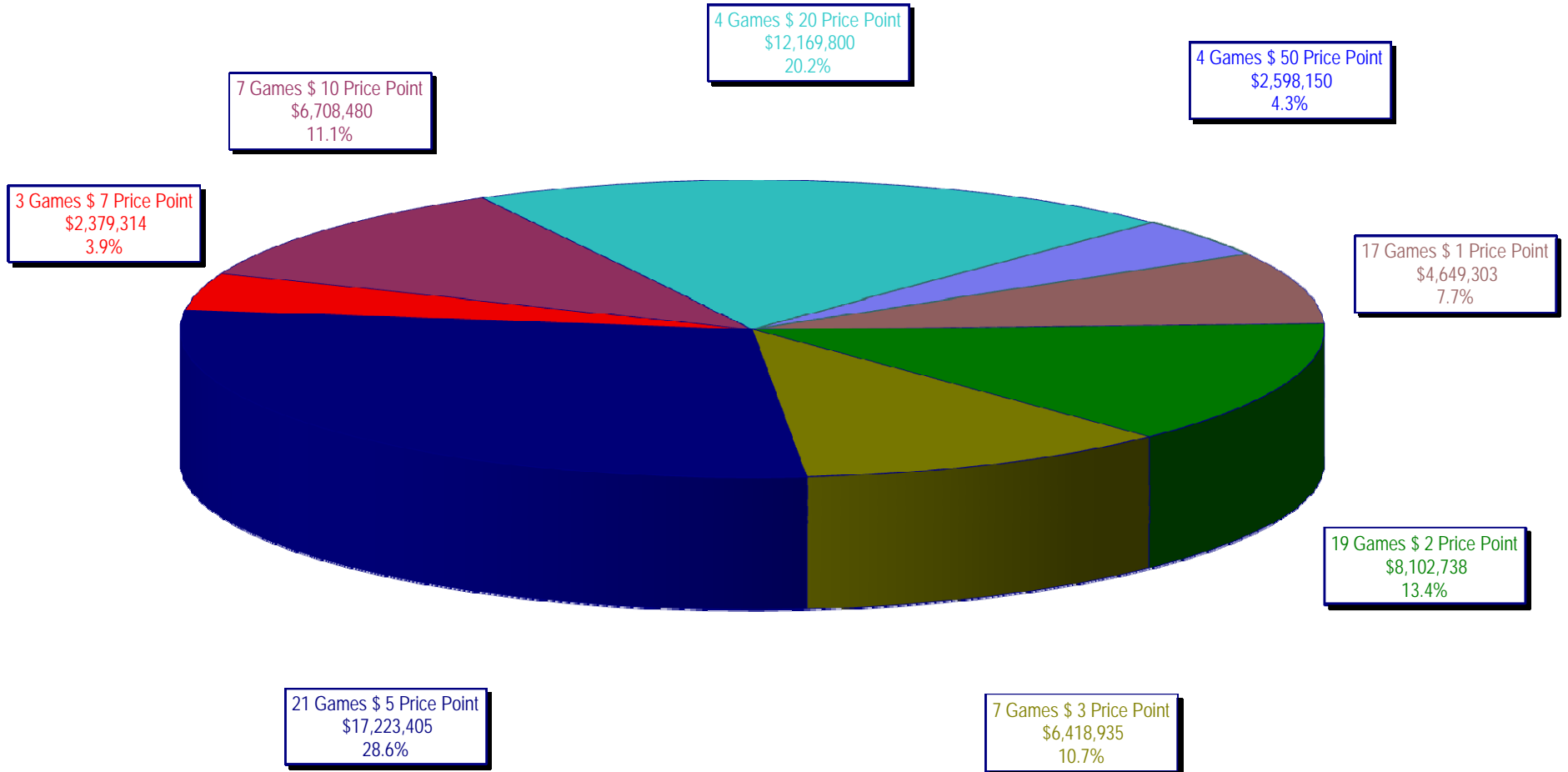
On-Line Sales

		FY Sales Through Week Ending 6/6/2009		FY Prize Expense Through Week Ending 6/6/2009	Actual* Prize Payout	Base Payout (Prize Pool)
Lotto	\$	146,000,505	\$	73,572,118	50.39%	50.00%
Pick 3		221,456,596		107,328,020	48.46%	50.00%
Pick 3 Sum It Up		4,648,279		2,126,857	45.76%	50.00%
Cash 5		54,996,417		27,602,885	50.19%	50.00%
Texas Two-Step		39,155,842		20,780,217	53.07%	50.00%
Mega Millions		148,823,237		74,100,699	49.79%	50.00%**
Megaplier		33,835,035		16,675,899	49.29%	N/A
Daily 4		35,330,591		17,898,075	50.66%	50.00%
Daily 4-Sum It Up		4,213,781		1,775,670	42.14%	50.00%
<b>Totals</b>	\$	<b>688,460,282</b>	\$	<b>341,860,440</b>	<b>49.66%</b>	

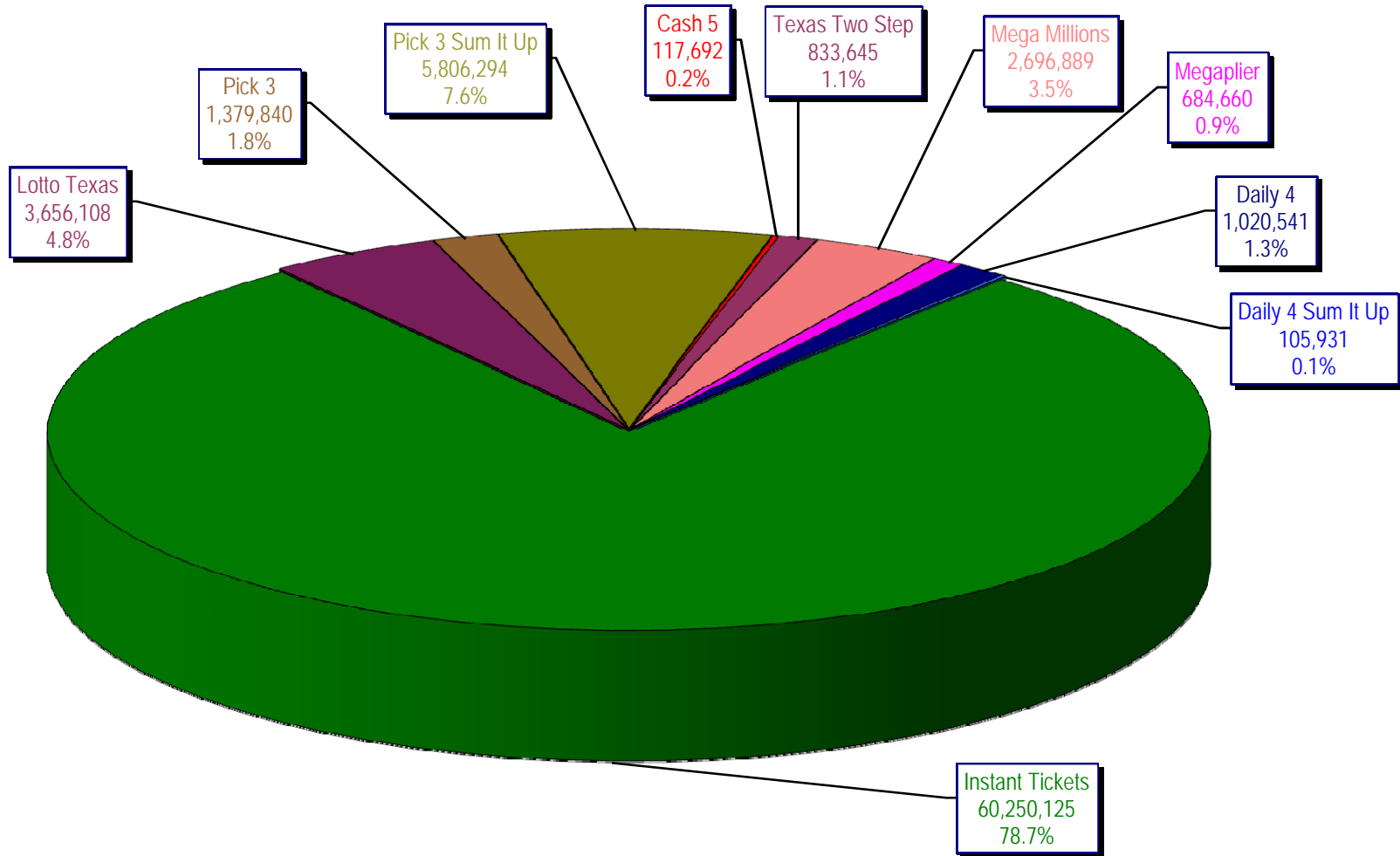
\* Before Unclaimed Prizes

\*\* Estimated; depends on # of guaranteed prizes won in Texas

Texas Lottery Commission  
Instant Ticket Sales  
For the Week Ending 06/06/2009  
(Unaudited)



Texas Lottery Commission  
**All Game Sales**  
For the Week Ending 06/06/2009  
(Unaudited)



Texas Lottery Commission - Weekly Sales Summary for FY 2009 (Unaudited)

Week Ended	Instant Games	New Games & Dates	Lotto Texas	Jackpot		Pick 3	Pick 3 Sum It Up	Cash 5	Texas Two Step	Jackpot		Mega Millions	Jackpot		Megaplier	Daily 4	Daily 4 Sum It Up	Total	Per Cap.
				W	S					M/T	TH/F		T	F					
9/6/2008	50,944,343.00	1108 (\$2,N), 1088 (\$3, N) - 9/01/08	3,378,718.00	5	6	5,436,414.00	122,123.00	1,396,622.00	890,346.00	350	450	2,445,490.00	12	16	649,090.00	786,482.50	109,834.00	66,159,462.50	2.77
9/13/2008	46,309,551.00	1109 (\$1,N), 1098 (\$5, N) - 9/08/08	3,020,089.00	7	8	4,705,585.50	105,899.00	1,279,412.00	856,199.00	600	200	2,327,214.00	24	12	617,672.00	696,633.00	96,156.50	60,014,411.00	2.51
9/20/2008	42,923,171.00	0	3,054,093.00	9	10	4,121,734.50	90,718.00	1,155,350.00	637,792.00	225	250	1,978,127.00	15	12	540,225.00	627,210.00	86,013.50	55,214,434.00	2.31
9/27/2008	47,042,801.00	1111 (\$2,N), 1099 (\$5, N) - 9/22/08	3,427,671.00	11	12	4,821,563.00	103,189.50	1,288,062.00	834,307.00	275	425	2,322,862.00	16	24	617,085.00	709,741.50	97,858.00	61,265,140.00	2.56
10/4/2008	50,747,162.00	1113 (\$1,N) 9/29/08	3,675,683.00	13	14	5,305,711.00	116,332.50	1,369,040.00	1,074,874.00	525	650	2,671,927.00	32	42	693,845.00	770,782.50	106,277.00	66,531,634.00	2.78
10/11/2008	49,763,789.00	0	3,732,365.00	15	16	5,287,094.00	114,665.50	1,370,334.00	1,305,250.00	800	975	2,306,070.00	12	16	622,120.00	778,204.00	106,395.00	65,386,286.50	2.74
10/18/2008	49,299,053.00	1117 (\$3,N), 1118 (\$20,N) - 10/13/08	3,780,438.00	17	18	5,149,258.00	109,530.00	1,355,601.00	741,849.00	200	200	2,500,644.00	23	32	652,198.00	776,366.00	102,056.00	64,466,993.00	2.70
10/25/2008	49,977,581.00	1119 (\$1,N), 1120 (\$5,N) - 10/20/08	3,210,762.00	4	5	5,099,671.00	107,104.50	1,339,079.00	789,649.00	225	275	2,456,965.00	42	12	641,206.00	778,434.00	102,972.50	64,503,424.00	2.70
11/1/2008	50,346,542.00	1121 (\$2,N), 1122 (\$10,N) - 10/27/08	3,325,641.00	6	7	5,234,124.00	109,983.00	1,339,046.00	946,035.00	375	475	2,347,596.00	16	23	626,235.00	805,572.00	104,612.50	65,185,386.50	2.73
11/8/2008	54,860,087.00	1123 (\$3,N), 1124 (\$7,N) - 11/03/08; 1103 (\$3,N) - 11/05/08; 1063 (\$3,N) - 11/07/08	3,290,417.00	4	5	5,686,701.00	118,495.00	1,397,985.00	1,158,101.00	625	750	2,729,302.50	31	42	692,662.00	871,230.00	112,175.50	70,917,156.00	2.97
11/15/2008	53,484,812.00	1125 (\$1, N), 1126 (\$5,N) - 11/10/08	3,336,934.00	6	7	5,459,984.00	112,884.00	1,366,024.00	766,955.00	200	225	3,102,251.00	51	62	749,736.00	830,957.00	104,094.00	69,314,631.00	2.90
11/22/2008	52,806,511.00	0	3,452,481.00	8	9	5,329,591.00	108,861.50	1,358,271.00	743,950.00	200	200	3,666,517.00	73	86	847,201.00	849,077.50	104,797.50	69,267,258.50	2.90
11/29/2008	52,199,741.00	1127 (\$2,N), 1128 (\$5,N) - 11/24/08	3,585,374.00	10	11	5,340,783.50	111,443.00	1,315,233.00	686,077.00	200	225	4,441,715.00	96	111	968,906.00	845,475.50	102,569.00	69,597,317.00	2.91
12/6/2008	56,731,851.00	0	3,794,991.00	12	13	5,752,593.00	121,663.50	1,416,446.00	780,328.00	250	200	6,238,355.00	128	146	1,270,214.00	881,841.50	107,357.00	77,095,640.00	3.23
12/13/2008	54,109,617.00	1129 (\$1, N) - 12/08/08	3,315,658.00	4	5	5,580,770.00	114,295.50	1,384,858.00	766,893.00	225	250	9,150,536.00	170	207	1,691,121.00	846,176.50	101,919.50	77,061,844.50	3.22
12/20/2008	55,777,328.00	1104 (\$2,N), 1105 (\$5,N), 1106 (\$10,N) - 12/15/08	3,432,340.00	6	7	5,741,120.00	116,075.50	1,401,805.00	741,945.00	200	200	2,736,234.00	12	16	687,875.00	871,579.50	104,543.00	71,610,845.00	3.00
12/27/2008	57,597,885.00	1077 (\$1,N), 1110 (\$1,N) - 12/22/08	3,582,169.00	8	4	5,628,081.50	115,323.00	1,340,590.00	708,906.00	225	250	2,842,167.00	22	29	706,042.00	828,346.00	100,146.00	73,449,655.50	3.07
1/3/2009	57,582,115.00	0	3,784,763.00	5	6	5,690,220.50	120,519.50	1,406,807.00	934,000.00	325	525	3,190,457.00	37	46	780,850.00	885,674.00	106,736.50	74,482,142.50	3.12
1/10/2009	54,250,945.00	1135 (\$2,N), 1136 (\$5,N) - 1/5/09	3,582,400.00	7	8	5,476,890.00	116,674.50	1,403,531.00	1,267,847.00	675	900	2,701,275.00	12	16	681,574.00	868,919.00	104,109.50	70,454,165.00	2.95
1/17/2009	51,625,339.00	1137 (\$1,N), 1138 (\$3,N) - 1/12/09	3,668,302.50	9	10	5,443,159.00	112,605.00	1,387,958.00	778,563.00	200	200	2,683,707.00	22	12	675,416.00	852,987.00	98,907.50	67,326,944.00	2.82
1/24/2009	52,789,573.00	1115 (\$2,N), 1116 (\$5,N) - 1/19/09	3,723,835.50	11	12	5,514,547.50	115,827.50	1,376,695.00	860,483.00	225	325	2,692,611.00	16	21	676,936.00	836,996.00	99,541.00	68,687,045.50	2.87
1/31/2009	55,453,471.00	1080 (\$1,N), 1024 (\$20,R) - 1/26/09; 1062 (\$5,N) - 1/28/09	3,837,299.00	13	14	5,700,714.50	121,794.50	1,403,756.00	1,070,879.00	450	600	3,002,883.00	30	40	731,253.00	925,937.50	113,755.50	72,361,743.00	3.03
2/7/2009	62,247,711.00	1035 (\$2,N), 1144 (\$5,N), 1058 (\$10, N) - 2/2/09	4,092,117.00	15	16	6,336,717.00	134,543.00	1,481,812.00	842,746.00	200	225	3,509,032.00	50	60	829,550.00	1,007,529.00	120,267.50	80,602,024.50	3.37
2/14/2009	60,509,056.00	1146 (\$7,N), 1089 (\$1,N) - 2/9/09	4,119,193.00	17	18	6,363,028.00	133,901.50	1,445,616.00	1,013,987.00	325	450	4,082,572.00	73	85	928,813.00	1,010,898.50	120,068.50	79,727,133.50	3.34
2/21/2009	59,194,623.00	1046 (\$2,N), 1140 (\$5,N) - 2/16/09	4,326,401.00	19	20	6,038,807.50	128,493.00	1,439,312.00	1,268,803.00	600	750	5,614,471.00	103	120	1,178,133.00	988,075.00	115,703.50	80,292,822.00	3.36
2/28/2009	58,857,216.00	1132 (\$10,N), 1149 (\$1,N) - 2/23/09	4,526,304.00	21	22	6,084,457.50	128,979.50	1,439,607.00	1,668,414.00	925	1,150	7,676,975.00	145	171	1,504,895.00	973,121.00	114,171.00	82,974,140.00	3.47

Texas Lottery Commission - Weekly Sales Summary for FY 2009 (Unaudited)

Week Ended	Instant Games	New Games & Dates	Lotto Texas	Jackpot		Pick 3	Pick 3 Sum It Up	Cash 5	Texas Two Step	Jackpot		Mega Millions	Jackpot		Megaplier	Daily 4	Daily 4 Sum It Up	Total	Per Cap.
				W	S					M/T	TH/F		T	F					
3/7/2009	59,552,257.00	0	4,928,440.00	23	25	6,133,789.00	128,599.00	1,487,185.00	1,984,358.00	1,350	1,600	6,898,457.00	212	12	1,349,427.00	971,644.50	113,236.00	83,547,392.50	3.50
3/14/2009	53,754,084.00	1139 (\$2.N), 1079 (\$5.N) - 3/09/09	4,752,592.00	26	28	5,850,166.00	120,684.50	1,418,127.00	2,112,571.00	1,900	2,150	2,782,204.00	16	26	698,214.00	925,615.00	109,657.50	72,523,915.00	3.03
3/21/2009	52,581,107.00	1107 (\$1.N), 1154 (\$3.N), 1057 (\$10.N) - 3/16/09; 1102 (\$2.N) - 3/19/09	3,437,818.00	4	5	5,776,041.50	117,294.00	1,399,720.00	880,620.00	200	225	2,595,785.00	12	16	653,517.00	934,185.00	108,057.50	68,484,145.00	2.87
3/28/2009	52,560,961.00	1130 (\$5.N), 1150 (\$10.N) - 3/23/09	3,486,731.00	6	7	5,633,454.50	114,269.50	1,381,550.00	901,673.00	300	200	2,845,499.00	24	34	701,971.00	925,093.50	104,691.50	68,655,894.00	2.87
4/4/2009	56,249,759.00	1151 (\$2.N), 1101 (\$50.N) - 3/30/09	3,746,083.00	8	9	5,893,043.50	122,332.00	1,429,598.00	940,614.00	225	300	3,321,274.00	43	54	794,282.00	998,042.00	111,733.50	73,606,761.00	3.08
4/11/2009	54,440,987.00	1153 (\$2.N) - 4/07/09; 1152 (\$3.N) - 4/08/09	3,594,176.00	10	4	5,893,551.00	120,491.50	1,394,879.00	933,807.00	425	200	3,772,700.00	65	78	857,890.00	987,127.50	105,977.50	72,101,586.50	3.02
4/18/2009	52,755,834.00	1145 (\$1.N), 1148 (\$5.N) - 4/13/09	3,462,217.00	5	6	5,627,572.00	117,123.50	1,374,682.00	829,493.00	225	200	4,960,982.00	92	109	1,040,136.00	957,161.00	100,218.50	71,225,419.00	2.98
4/25/2009	51,450,968.00	1051 (\$7.N) - 4/20/09	3,517,624.00	7	8	5,408,672.50	117,314.50	1,347,754.00	876,206.00	225	300	6,614,120.95	130	155	1,298,021.00	937,777.00	99,408.50	71,667,866.45	3.00
5/2/2009	52,327,090.00	1161 (\$1.N), 1081 (\$5.N) - 4/27/09	3,679,438.00	9	10	5,512,770.50	113,755.50	1,362,174.00	880,888.00	425	200	9,277,686.00	181	225	1,653,107.00	937,874.00	102,880.00	75,847,663.00	3.17
5/9/2009	53,214,412.00	0	3,554,635.00	11	4	5,603,106.00	118,185.50	1,389,454.00	823,436.00	225	200	2,961,748.00	12	17	718,169.00	967,592.00	104,881.00	69,455,618.50	2.91
5/16/2009	50,785,227.00	1131 (\$2.N), 1134 (\$5.N) - 5/11/09; 1165 (\$1.N), 1114 (\$20.N) - 5/18/09; 1156 (\$1.N) - 5/19/09; 1153 (\$2.N) - 5/20/09	3,332,475.00	5	6	5,417,197.00	112,501.00	1,356,843.00	842,436.00	225	275	3,116,696.00	28	38	748,141.00	959,922.50	104,332.00	66,775,770.50	2.79
5/23/2009	56,567,077.00		3,425,065.00	7	8	5,363,150.50	111,143.50	1,356,979.00	1,061,946.00	400	525	2,790,741.00	12	16	694,815.00	967,375.50	103,231.00	72,441,523.50	3.03
5/30/2009	55,359,239.00	1049 (\$3.N) - 5/25/09	3,480,479.00	9	10	5,329,739.50	108,222.50	1,314,598.00	1,173,008.00	650	800	2,871,590.00	25	35	705,366.00	957,423.50	99,769.00	71,399,434.50	2.99
6/6/2009	60,250,125.00	1112 (\$5.N) - 6/1/09	3,656,108.00	11	12	5,806,294.00	117,692.00	1,379,840.00	833,645.00	200	225	2,696,889.00	12	17	684,660.00	1,020,540.50	105,930.50	76,551,724.00	3.20
weekly change	8.83%		5.05%			8.94%	8.75%	4.96%	-28.93%			-6.08%			-2.94%	6.59%	6.18%	7.22%	
	<b>SALES</b>		<b>SALES</b>			<b>SALES</b>	<b>SALES</b>	<b>SALES</b>	<b>SALES</b>			<b>SALES</b>			<b>SALES</b>	<b>SALES</b>	<b>SALES</b>	<b>SALES</b>	<b>% of Sales</b>
Startup to date	35,623,812,764.00		10,425,097,552.00			3,520,175,548.50	11,134,108.50	2,174,152,427.00	465,421,560.00			1,074,961,832.45			252,043,069.00	77,547,562.00	12,552,584.50	53,845,032,979.95	100.0%
Calendar Year to date	1,241,909,089.00		85,728,260.00			129,016,049.50	175,670.50	31,413,973.00	24,262,423.00			91,004,928.95			20,175,254.00	21,339,903.50	2,411,777.00	1,647,437,328.45	100.0%
Fiscal Year to date 2009	2,143,226,762.00		146,000,505.00			221,456,596.00	4,648,278.50	54,996,417.00	39,155,842.00			148,823,237.45			33,835,035.00	35,330,590.50	4,213,781.00	2,831,687,044.45	100.0%