



WEEKLY SALES SUMMARY

Unaudited

[Week Ending: 06/13/2009](#)

Texas Lottery Commission
Fiscal Year to Date Sales Comparison
Unaudited

Through the week ending 06/13/2009 (41 weeks)

Sales by Game	FY 2007 *	FY 2008 **	FY 2009	\$ Change		% Change	
				FY 2009 to FY 2007	FY 2009 to FY 2008	FY 2009 to FY 2007	FY 2009 to FY 2008
Instants	\$ 2,279,217,165	\$ 2,221,118,506	\$ 2,198,206,279	\$ -81,010,886	\$ -22,912,227	-3.6%	-1.0%
Lotto Texas	188,602,370	161,412,755	149,639,569	-38,962,801	-11,773,186	-20.7%	-7.3%
Pick 3	247,786,815	226,937,622	226,890,912	-20,895,903	-46,710	-8.4%	0.0%
Pick 3 Sum It Up	-	5,114,362	4,757,760	4,757,760	-356,602	-	-7.0%
Cash 5	69,036,070	60,146,242	56,320,228	-12,715,842	-3,826,014	-18.4%	-6.4%
Texas Two Step	39,653,453	37,873,945	40,116,163	462,710	2,242,218	1.2%	5.9%
Mega Millions	139,887,611	138,599,220	151,715,640	11,828,029	13,116,420	8.5%	9.5%
Megaplier	32,934,882	32,682,312	34,547,971	1,613,089	1,865,659	4.9%	5.7%
Daily 4	-	33,500,990	36,298,038	36,298,038	2,797,048	-	8.3%
Daily 4 Sum It Up	-	7,086,828	4,317,216	4,317,216	-2,769,612	-	-39.1%
Total	\$ 2,997,118,366	\$ 2,924,472,781	\$ 2,902,809,776	\$ -94,308,590	\$ -21,663,005	-3.1%	-0.7%

* 3 extra days in 2007 ** 2 extra days in 2008

Texas Lottery Commission
Fiscal Year Over Year Change in Sales
Unaudited
FY 2009 Compared to FY 2008

Week	FY 2009 Week Ending	INSTANT TICKETS				ON-LINE GAMES				TOTAL SALES			
		FY 2009	FY 2008	Difference	% change - Cumulative Sales	FY 2009	FY 2008	Difference	% change - Cumulative Sales	FY 2009	FY 2008	Difference	% change - Cumulative Sales
1	9/6/2008**	\$44,890,104	\$62,376,229	(\$17,486,125)	-28.0%	\$14,722,011	\$19,372,224	(\$4,650,213)	-24.0%	\$59,612,115	\$81,748,453	(\$22,136,338)	-27.1%
2	9/13/2008	\$46,309,551	\$52,458,866	(\$6,149,315)	-20.6%	\$13,704,860	\$16,926,163	(\$3,221,303)	-21.7%	\$60,014,411	\$69,385,029	(\$9,370,618)	-20.8%
3	9/20/2008	\$42,923,171	\$49,998,934	(\$7,075,763)	-18.6%	\$12,291,263	\$15,792,283	(\$3,501,020)	-21.8%	\$55,214,434	\$65,791,217	(\$10,576,783)	-19.4%
4	9/27/2008	\$47,042,801	\$49,894,175	(\$2,851,374)	-15.6%	\$14,222,339	\$14,800,514	(\$578,175)	-17.9%	\$61,265,140	\$64,694,689	(\$3,429,549)	-16.2%
5	10/4/2008	\$50,747,162	\$53,486,863	(\$2,739,701)	-13.5%	\$15,784,472	\$16,618,430	(\$833,958)	-15.3%	\$66,531,634	\$70,105,293	(\$3,573,659)	-14.0%
6	10/11/2008	\$49,763,789	\$50,918,020	(\$1,154,231)	-11.7%	\$15,622,498	\$15,601,410	\$21,088	-12.9%	\$65,386,287	\$66,519,430	(\$1,133,143)	-12.0%
7	10/18/2008	\$49,299,053	\$50,532,253	(\$1,233,200)	-10.5%	\$15,167,940	\$15,682,666	(\$514,726)	-11.6%	\$64,466,993	\$66,214,919	(\$1,747,926)	-10.7%
8	10/25/2008	\$49,977,581	\$50,347,450	(\$369,869)	-9.3%	\$14,525,843	\$15,586,516	(\$1,060,673)	-11.0%	\$64,503,424	\$65,933,966	(\$1,430,542)	-9.7%
9	11/1/2008	\$50,346,542	\$53,953,733	(\$3,607,191)	-9.0%	\$14,838,845	\$16,775,983	(\$1,937,139)	-11.1%	\$65,185,387	\$70,729,716	(\$5,544,330)	-9.5%
10	11/8/2008	\$54,860,087	\$53,635,090	\$1,224,997	-7.9%	\$16,057,069	\$15,912,791	\$144,278	-9.9%	\$70,917,156	\$69,547,881	\$1,369,275	-8.3%
11	11/15/2008	\$53,484,812	\$51,254,401	\$2,230,411	-6.8%	\$15,829,819	\$15,797,076	\$32,744	-9.0%	\$69,314,631	\$67,051,477	\$2,263,155	-7.3%
12	11/22/2008	\$52,806,511	\$50,897,817	\$1,908,694	-5.9%	\$16,460,748	\$15,801,720	\$659,028	-7.9%	\$69,267,259	\$66,699,537	\$2,567,722	-6.4%
13	11/29/2008	\$52,199,741	\$53,913,115	(\$1,713,374)	-5.7%	\$17,397,576	\$17,055,505	\$342,072	-7.1%	\$69,597,317	\$70,968,620	(\$1,371,303)	-6.0%
14	12/6/2008	\$56,731,851	\$55,702,697	\$1,029,154	-5.1%	\$20,363,789	\$17,900,717	\$2,463,073	-5.5%	\$77,095,640	\$73,603,414	\$3,492,227	-5.2%
15	12/13/2008	\$54,109,617	\$53,703,516	\$406,101	-4.7%	\$22,952,228	\$17,820,841	\$5,131,387	-3.0%	\$77,061,845	\$71,524,357	\$5,537,488	-4.3%
16	12/20/2008	\$55,777,328	\$57,592,769	(\$1,815,441)	-4.6%	\$15,833,517	\$17,436,233	(\$1,602,716)	-3.4%	\$71,610,845	\$75,029,002	(\$3,418,157)	-4.3%
17	12/27/2008	\$57,597,885	\$57,696,003	(\$98,118)	-4.3%	\$15,851,771	\$14,743,680	\$1,108,091	-2.9%	\$73,449,656	\$72,439,683	\$1,009,973	-4.0%
18	1/3/2009	\$57,582,115	\$57,935,952	(\$353,837)	-4.1%	\$16,900,028	\$15,704,450	\$1,195,578	-2.3%	\$74,482,143	\$73,640,402	\$841,741	-3.7%
19	1/10/2009	\$54,250,945	\$55,360,542	(\$1,109,597)	-4.0%	\$16,203,220	\$15,691,540	\$511,680	-2.0%	\$70,454,165	\$71,052,082	(\$597,917)	-3.5%
20	1/17/2009	\$51,625,339	\$54,920,166	(\$3,294,827)	-4.1%	\$15,701,605	\$16,259,669	(\$558,064)	-2.1%	\$67,326,944	\$71,179,835	(\$3,852,891)	-3.6%
21	1/24/2009	\$52,789,573	\$54,439,890	(\$1,650,317)	-4.1%	\$15,897,473	\$16,691,724	(\$794,251)	-2.2%	\$68,687,046	\$71,131,614	(\$2,444,568)	-3.6%
22	1/31/2009	\$55,453,471	\$57,464,382	(\$2,010,911)	-4.0%	\$16,908,272	\$17,968,227	(\$1,059,955)	-2.4%	\$72,361,743	\$75,432,609	(\$3,070,866)	-3.7%
23	2/7/2009	\$62,247,711	\$60,715,019	\$1,532,692	-3.7%	\$18,354,314	\$20,097,338	(\$1,743,025)	-2.7%	\$80,602,025	\$80,812,357	(\$210,333)	-3.5%
24	2/14/2009	\$60,509,056	\$57,093,143	\$3,415,913	-3.3%	\$19,218,078	\$22,179,908	(\$2,961,831)	-3.3%	\$79,727,134	\$79,273,051	\$454,083	-3.3%
25	2/21/2009	\$59,194,623	\$57,627,047	\$1,567,576	-3.0%	\$21,098,199	\$27,230,539	(\$6,132,340)	-4.5%	\$80,292,822	\$84,857,586	(\$4,564,764)	-3.4%
26	2/28/2009	\$58,857,216	\$55,591,667	\$3,265,549	-2.7%	\$24,116,924	\$17,016,118	\$7,100,806	-2.8%	\$82,974,140	\$72,607,785	\$10,366,355	-2.7%
27	3/7/2009	\$59,552,257	\$56,837,481	\$2,714,776	-2.4%	\$23,995,136	\$16,690,193	\$7,304,943	-1.1%	\$83,547,393	\$73,527,674	\$10,019,719	-2.1%
28	3/14/2009	\$53,754,084	\$54,587,112	(\$833,028)	-2.4%	\$18,769,831	\$16,448,165	\$2,321,667	-0.6%	\$72,523,915	\$71,035,277	\$1,488,639	-1.9%
29	3/21/2009	\$52,581,107	\$53,098,937	(\$517,830)	-2.3%	\$15,903,038	\$16,639,184	(\$736,146)	-0.7%	\$68,484,145	\$69,738,121	(\$1,253,976)	-1.9%
30	3/28/2009	\$52,560,961	\$53,933,689	(\$1,372,728)	-2.3%	\$16,094,933	\$17,698,625	(\$1,603,692)	-1.0%	\$68,655,894	\$71,632,314	(\$2,976,420)	-2.0%
31	4/4/2009	\$56,249,759	\$57,598,982	(\$1,349,223)	-2.3%	\$17,357,002	\$17,665,411	(\$308,409)	-1.0%	\$73,606,761	\$75,264,393	(\$1,657,632)	-2.0%
32	4/11/2009	\$54,440,987	\$53,954,185	\$486,802	-2.2%	\$17,660,600	\$15,860,784	\$1,799,816	-0.7%	\$72,101,587	\$69,814,969	\$2,286,618	-1.9%
33	4/18/2009	\$52,755,834	\$53,946,736	(\$1,190,902)	-2.2%	\$18,469,585	\$16,452,676	\$2,016,909	-0.3%	\$71,225,419	\$70,399,412	\$826,007	-1.8%
34	4/25/2009	\$51,450,968	\$51,533,006	(\$82,038)	-2.2%	\$20,216,898	\$16,873,949	\$3,342,950	0.3%	\$71,667,866	\$68,406,955	\$3,260,912	-1.6%
35	5/2/2009	\$52,327,090	\$53,250,568	(\$923,478)	-2.2%	\$23,520,573	\$18,202,103	\$5,318,471	1.2%	\$75,847,663	\$71,452,671	\$4,394,993	-1.4%
36	5/9/2009	\$53,214,412	\$54,060,849	(\$846,437)	-2.1%	\$16,241,207	\$18,422,562	(\$2,181,355)	0.8%	\$69,455,619	\$72,483,411	(\$3,027,792)	-1.4%
37	5/16/2009	\$50,785,227	\$54,010,641	(\$3,225,414)	-2.2%	\$15,990,544	\$20,728,360	(\$4,737,816)	0.0%	\$66,775,771	\$74,739,001	(\$7,963,230)	-1.7%
38	5/23/2009	\$56,567,077	\$50,377,032	\$6,190,045	-1.9%	\$15,874,447	\$15,461,384	\$413,063	0.1%	\$72,441,524	\$65,838,416	\$6,603,108	-1.4%
39	5/30/2009	\$55,359,239	\$49,545,080	\$5,814,159	-1.6%	\$16,040,196	\$15,175,370	\$864,826	0.2%	\$71,399,435	\$64,720,450	\$6,678,985	-1.1%
40	6/6/2009	\$60,250,125	\$53,702,986	\$6,547,139	-1.2%	\$16,301,599	\$15,982,166	\$319,434	0.2%	\$76,551,724	\$69,685,152	\$6,866,573	-0.9%

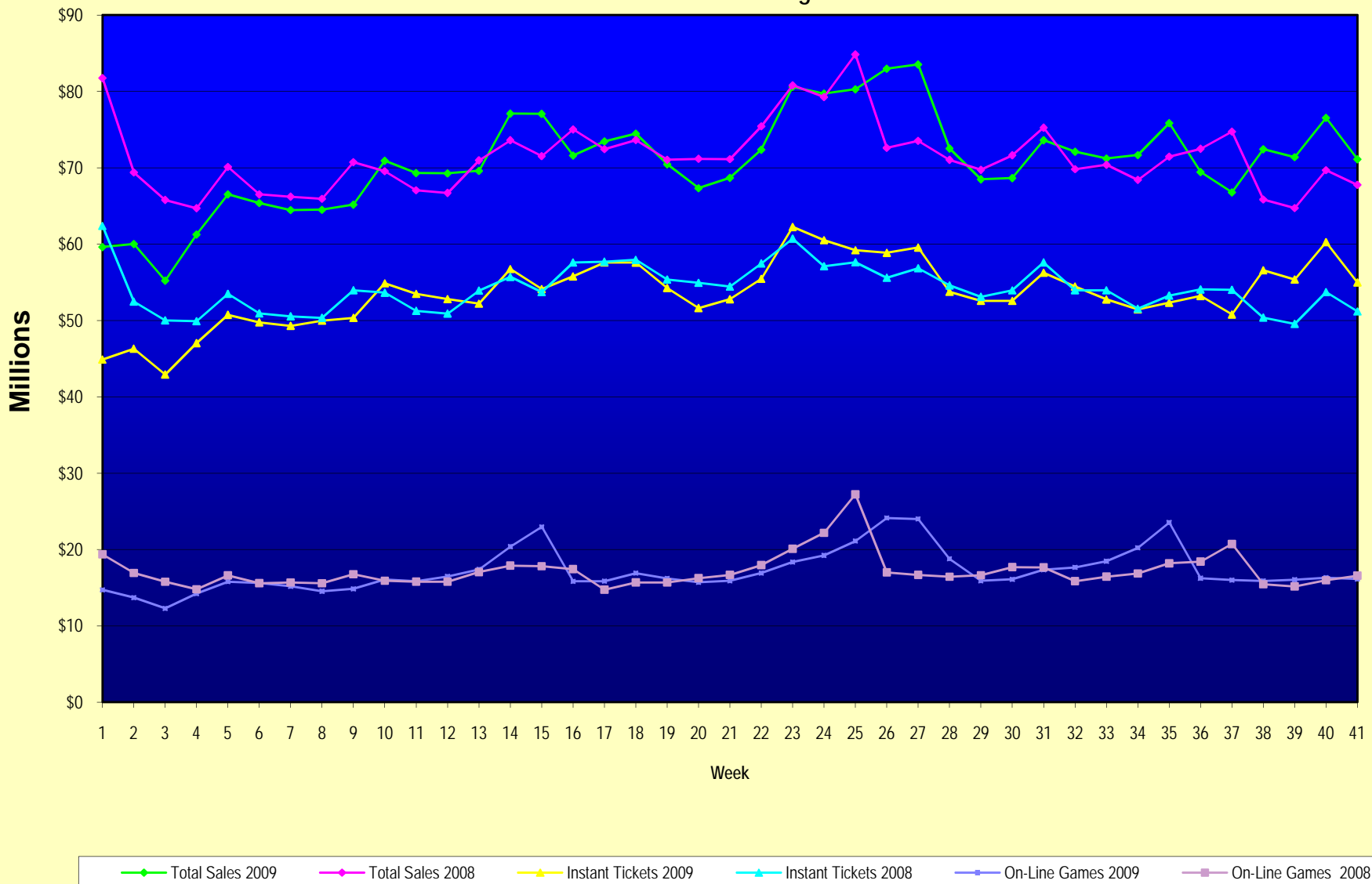
Note: Week 1 is not a full week of sales as this report is prepared on a Fiscal Year basis.

Texas Lottery Commission
Fiscal Year Over Year Change in Sales
Unaudited
FY 2009 Compared to FY 2008

Week	FY 2009 Week Ending	INSTANT TICKETS				ON-LINE GAMES				TOTAL SALES			
		FY 2009	FY 2008	Difference	% change - Cumulative Sales	FY 2009	FY 2008	Difference	% change - Cumulative Sales	FY 2009	FY 2008	Difference	% change - Cumulative Sales
41	6/13/2009	\$54,979,517	\$51,171,483	\$3,808,034	-1.0%	\$16,143,215	\$16,589,087	(\$445,872)	0.2%	\$71,122,732	\$67,760,570	\$3,362,162	-0.7%
42	6/20/2009		\$50,650,362				\$15,728,484				\$66,378,846		
43	6/27/2009		\$49,258,266				\$15,250,905				\$64,509,171		
44	7/4/2009		\$53,393,355				\$16,270,619				\$69,663,974		
45	7/11/2009		\$53,127,756				\$16,914,922				\$70,042,678		
46	7/18/2009		\$51,593,146				\$17,752,738				\$69,345,884		
47	7/25/2009		\$49,902,181				\$16,706,145				\$66,608,326		
48	8/1/2009		\$49,605,420				\$16,254,383				\$65,859,803		
49	8/8/2009		\$50,961,907				\$16,770,496				\$67,732,403		
50	8/15/2009		\$49,452,511				\$16,749,487				\$66,201,998		
51	8/22/2009		\$49,249,518				\$17,286,302				\$66,535,820		
52	8/29/2009		\$49,468,928				\$18,109,997				\$67,578,925		
53	9/5/2009		\$6,054,239				\$493,109				\$6,547,348		
Total thru Current Week		\$2,198,206,279	\$2,221,118,506	(\$22,912,227)	-1.0%	\$704,603,497	\$703,354,275	\$1,249,222	0.2%	\$2,902,809,776	\$2,924,472,781	(\$21,663,005)	-0.7%
Fiscal Year Total		\$2,198,206,279	\$2,783,836,095			\$704,603,497	\$887,641,858			\$2,902,809,776	\$3,671,477,953		

** FY 2009 includes 6 days; FY 2008 includes 8 days
FY 2009 average daily sales are \$9,242,258. Two days at average daily sales are \$18,484,516.

Texas Lottery Commission Fiscal Year Over Year Change in Sales



Note: Week 1 is not a full week of sales as this report is prepared on a Fiscal Year basis.

Texas Lottery Commission
Instant Tickets by Price Point
Sales, Prize Expense, Sales Contribution and Payout Percentage With Year Over Year Changes
Unaudited

Fiscal Year	Price Point	# of Active Games	FY Sales	% of Instant Ticket Sales	Year over Year Change in Sales	FY Prize Expense	Year over Year Change in Prize Expense	FY Sales Contribution	Year over Year Change in Contribution	Average Prize Payout %	Year over Year Change in Payout %
2008	\$1.00	45	\$183,355,431	8.3%		\$110,934,897		\$72,420,534		60.5%	0.7%
thru	\$2.00	53	\$371,181,602	16.7%		\$241,723,108		\$129,458,494		65.1%	0.4%
6/14/2008	\$3.00	17	\$198,910,713	9.0%		\$130,789,737		\$68,120,976		65.8%	-0.1%
	\$5.00	47	\$614,330,221	27.7%		\$417,294,856		\$197,035,365		67.9%	-0.1%
	\$7.00	12	\$125,692,483	5.7%		\$85,482,272		\$40,210,211		68.0%	0.1%
	\$10.00	20	\$333,752,496	15.0%		\$233,486,752		\$100,265,744		70.0%	-0.8%
	\$20.00	9	\$170,607,760	7.7%		\$122,566,792		\$48,040,968		71.8%	-0.2%
	\$25.00	2	\$52,189,850	2.3%		\$37,893,404		\$14,296,446		72.6%	0.3%
	\$30.00	3	\$50,606,400	2.3%		\$36,633,695		\$13,972,705		72.4%	0.2%
	\$50.00	2	\$120,491,550	5.4%		\$86,933,405		\$33,558,145		72.1%	0.0%
Total		210	\$2,221,118,506			\$1,503,738,917		\$717,379,589		67.7%	0.3%
2009	\$1.00	44	190,730,272	8.7%		114,678,861		76,051,411		60.1%	0.0%
thru	\$2.00	40	367,619,000	16.7%		239,545,375		128,073,625		65.2%	-0.2%
6/13/2009	\$3.00	17	229,308,708	10.4%		150,427,619		78,881,089		65.6%	-0.2%
	\$5.00	46	674,278,169	30.7%		458,572,464		215,705,705		68.0%	0.1%
	\$7.00	8	112,395,605	5.1%		76,437,583		35,958,022		68.0%	0.0%
	\$10.00	18	305,527,510	13.9%		213,760,779		91,766,731		70.0%	0.0%
	\$20.00	9	210,291,060	9.6%		152,057,771		58,233,290		72.3%	0.8%
	\$25.00	1	2,372,325	0.1%		1,725,527		646,798		72.7%	0.2%
	\$30.00	3	10,023,630	0.5%		7,263,494		2,760,136		72.5%	0.1%
	\$50.00	4	95,660,000	4.4%		70,680,248		24,979,752		73.9%	2.4%
Total		190	\$2,198,206,279			\$1,485,149,719		\$713,056,560		67.6%	-0.2%
Variance	\$1.00	-1	7,374,841		4.0%	3,743,964	3.4%	3,630,877	5.0%	-0.38%	
2009 to	\$2.00	-13	-3,562,602		-1.0%	-2,177,733	-0.9%	-1,384,869	-1.1%	0.04%	
2008	\$3.00	0	30,397,995		15.3%	19,637,882	15.0%	10,760,113	15.8%	-0.15%	
	\$5.00	-1	59,947,948		9.8%	41,277,607	9.9%	18,670,341	9.5%	0.08%	
	\$7.00	-4	-13,296,878		-10.6%	-9,044,689	-10.6%	-4,252,189	-10.6%	0.00%	
	\$10.00	-2	-28,224,986		-8.5%	-19,725,973	-8.4%	-8,499,013	-8.5%	0.01%	
	\$20.00	0	39,683,300		23.3%	29,490,979	24.1%	10,192,321	21.2%	0.47%	
	\$25.00	-1	-49,817,525		-95.5%	-36,167,877	-95.4%	-13,649,648	-95.5%	0.13%	
	\$30.00	0	-40,582,770		-80.2%	-29,370,201	-80.2%	-11,212,569	-80.2%	0.07%	
	\$50.00	2	-24,831,550		-20.6%	-16,253,157	-18.7%	-8,578,393	-25.6%	1.74%	
Total		-20	-\$22,912,227		-1.0%	-\$18,589,195	-1.2%	-\$4,323,026	-0.6%	-0.14%	

Texas Lottery Commission
Instant Tickets by Price Point
Sales, Prize Expense, Sales Contribution and Payout Percentage With Year Over Year Changes
 Unaudited

Notes - Instant Ticket Variances

		FY 2009		FY 2008		Difference
Sales	\$1 - \$7		\$1,574,331,754		\$1,493,470,450	\$80,861,304
Prize Exp.	\$1 - \$7		\$1,039,661,901		\$986,224,870	\$53,437,030
Sales Cont.	\$1 - \$7		\$534,669,853		\$507,245,580	\$27,424,274
Prize Exp. %	\$1 - \$7		66.0%		66.0%	0.0%
		FY 2009		FY 2008		Difference
Sales	\$10 - \$50		\$623,874,525		\$727,648,056	-\$103,773,531
Prize Exp.	\$10 - \$50		\$445,487,818		\$517,514,047	-\$72,026,229
Sales Cont.	\$10 - \$50		\$178,386,707		\$210,134,009	-\$31,747,302
Prize Exp. %	\$10 - \$50		71.4%		71.1%	0.3%
		FY 2009		FY 2008		Difference
Sales	Instant		\$2,198,206,279		\$2,221,118,506	-\$22,912,227
Prize Exp.	Instant		\$1,485,149,719		\$1,503,738,917	-\$18,589,199
Sales Cont.	Instant		\$713,056,560		\$717,379,589	-\$4,323,028
Prize Exp. %	Instant		67.6%		67.7%	-0.1%

		FY 2009		FY 2008		Difference
Sales	\$1 - \$10		\$1,879,859,264		\$1,827,222,946	\$52,636,318
Prize Exp.	\$1 - \$10		\$1,253,422,680		\$1,219,711,622	\$33,711,058
Sales Cont.	\$1 - \$10		\$626,436,584		\$607,511,324	\$18,925,260
Prize Exp. %	\$1 - \$10		66.7%		66.8%	-0.1%
		FY 2009		FY 2008		Difference
Sales	\$20 - \$50		\$318,347,015		\$393,895,560	-\$75,548,545
Prize Exp.	\$20 - \$50		\$231,727,039		\$284,027,295	-\$52,300,256
Sales Cont.	\$20 - \$50		\$86,619,976		\$109,868,265	-\$23,248,289
Prize Exp. %	\$20 - \$50		72.8%		72.1%	0.7%
		FY 2009		FY 2008		Difference
Sales	Instant		\$2,198,206,279		\$2,221,118,506	-\$22,912,227
Prize Exp.	Instant		\$1,485,149,719		\$1,503,738,917	-\$18,589,199
Sales Cont.	Instant		\$713,056,560		\$717,379,589	-\$4,323,028
Prize Exp. %	Instant		67.6%		67.7%	-0.1%

Texas Lottery Commission
Weekly Sales Summary
& Comparison to Previous Week
 Unaudited

	Week Ending 06/13/2009	% of Sales	Week Ending 06/06/2009	% of Sales	\$ change	% change
	<u>THIS WEEK</u>		<u>LAST WEEK</u>			
Total Sales	<u>\$71,122,732</u>		<u>\$76,551,724</u>		<u>-\$5,428,993</u>	-7.09%
Instant Tickets	<u>\$54,979,517</u>	77.3%	<u>\$60,250,125</u>	78.7%	<u>-\$5,270,608</u>	-8.75%
Lotto Texas	\$3,639,064	5.1%	\$3,656,108	4.8%	-\$17,044	-0.47%
Pick 3	\$5,434,316	7.6%	\$5,806,294	7.6%	-\$371,978	-6.41%
Pick 3 Sum It Up	\$109,482	0.2%	\$117,692	0.2%	-\$8,211	-6.98%
Cash 5	\$1,323,811	1.9%	\$1,379,840	1.8%	-\$56,029	-4.06%
Texas Two Step	\$960,321	1.4%	\$833,645	1.1%	\$126,676	15.20%
Mega Millions	\$2,892,403	4.1%	\$2,696,889	3.5%	\$195,514	7.25%
Megaplier	\$712,936	1.0%	\$684,660	0.9%	\$28,276	4.13%
Daily 4	\$967,448	1.4%	\$1,020,541	1.3%	-\$53,093	-5.20%
Daily 4 Sum It Up	<u>\$103,435</u>	0.1%	<u>\$105,931</u>	0.1%	<u>-\$2,496</u>	-2.36%
Total Online Sales	<u>\$16,143,215</u>		<u>\$16,301,599</u>		<u>-\$158,385</u>	-0.97%

* Totals may not sum due to rounding.

Texas Lottery Commission
Weekly Sales Summary
Unaudited

INSTANT TICKETS
TOP TEN SELLING GAMES

For the Week Ending : 06/13/2009

Rank	Price Point	Game	Sales (Millions)
1	\$ 20	\$500,000,000 BLOCKBUSTER	\$ 9.415
2	\$ 5	CASH VAULT	\$ 3.750
3	\$ 3	BONUS CASHWORD	\$ 2.460
4	\$ 50	\$140,000,000 EXTREME PAYOUT	\$ 2.244
5	\$ 5	CASH FRENZY	\$ 2.213
6	\$ 10	PRECIOUS JEWELS	\$ 1.960
7	\$ 10	SET FOR LIFE	\$ 1.904
8	\$ 5	\$50,000 TREASURES	\$ 1.833
9	\$ 7	\$75,000 CASINO	\$ 1.730
10	\$ 5	KING OF CASH	\$ 1.599

Texas Lottery Commission
Prize Payout Tracking Report
Unaudited

Through Week Ending 06/13/2009

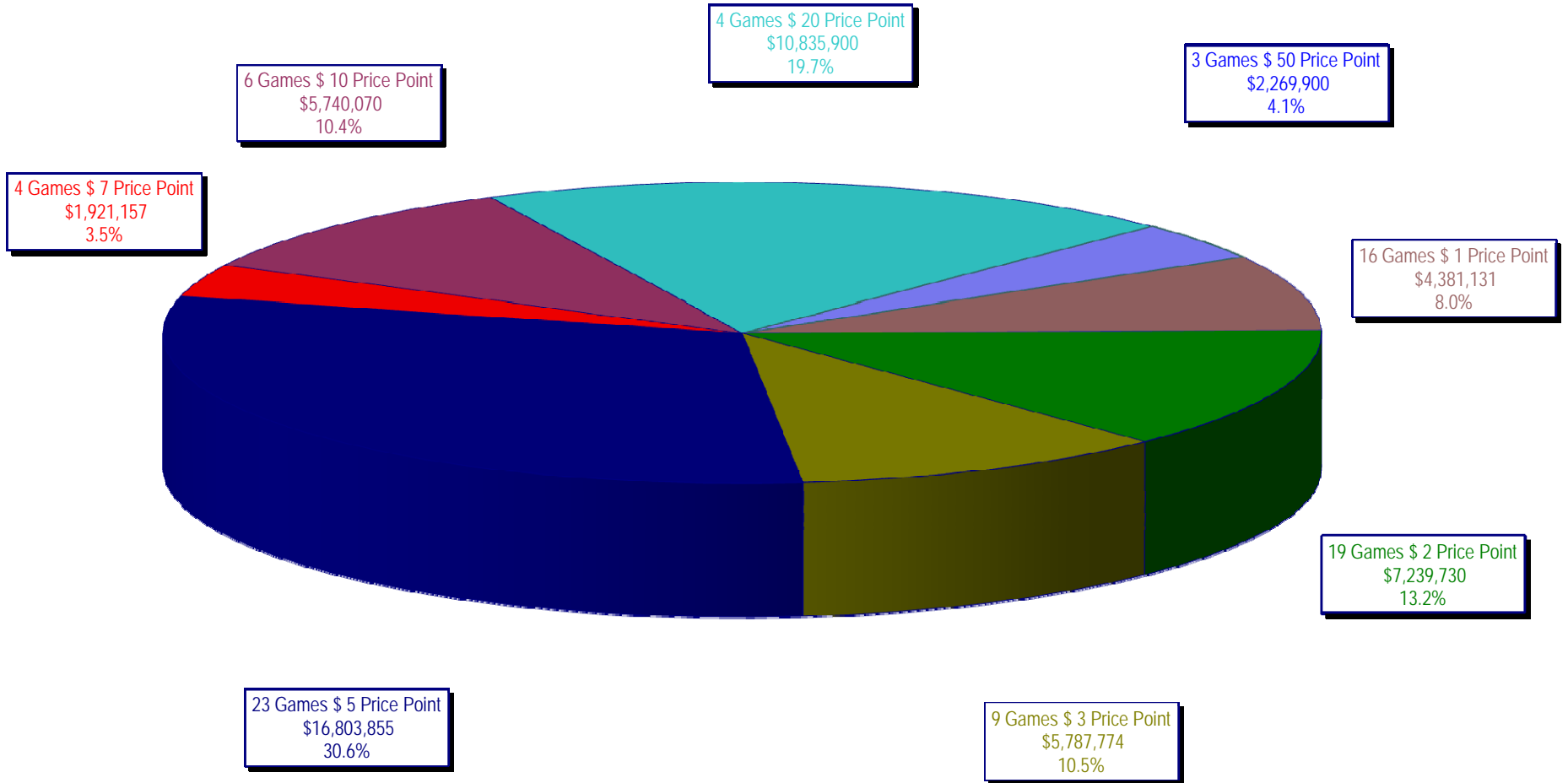
On-Line Sales

		FY Sales Through Week Ending 6/13/2009		FY Prize Expense Through Week Ending 6/13/2009	Actual* Prize Payout	Base Payout (Prize Pool)
Lotto	\$	149,639,569	\$	75,392,772	50.38%	50.00%
Pick 3		226,890,912		109,792,840	48.39%	50.00%
Pick 3 Sum It Up		4,757,760		2,169,825	45.61%	50.00%
Cash 5		56,320,228		28,264,989	50.19%	50.00%
Texas Two-Step		40,116,163		21,261,318	53.00%	50.00%
Mega Millions		151,715,640		76,097,301	50.16%	50.00%**
Megaplier		34,547,971		17,292,907	50.05%	N/A
Daily 4		36,298,038		18,330,125	50.50%	50.00%
Daily 4-Sum It Up		4,317,216		1,847,559	42.80%	50.00%
Totals	\$	704,603,497	\$	350,449,636	49.74%	

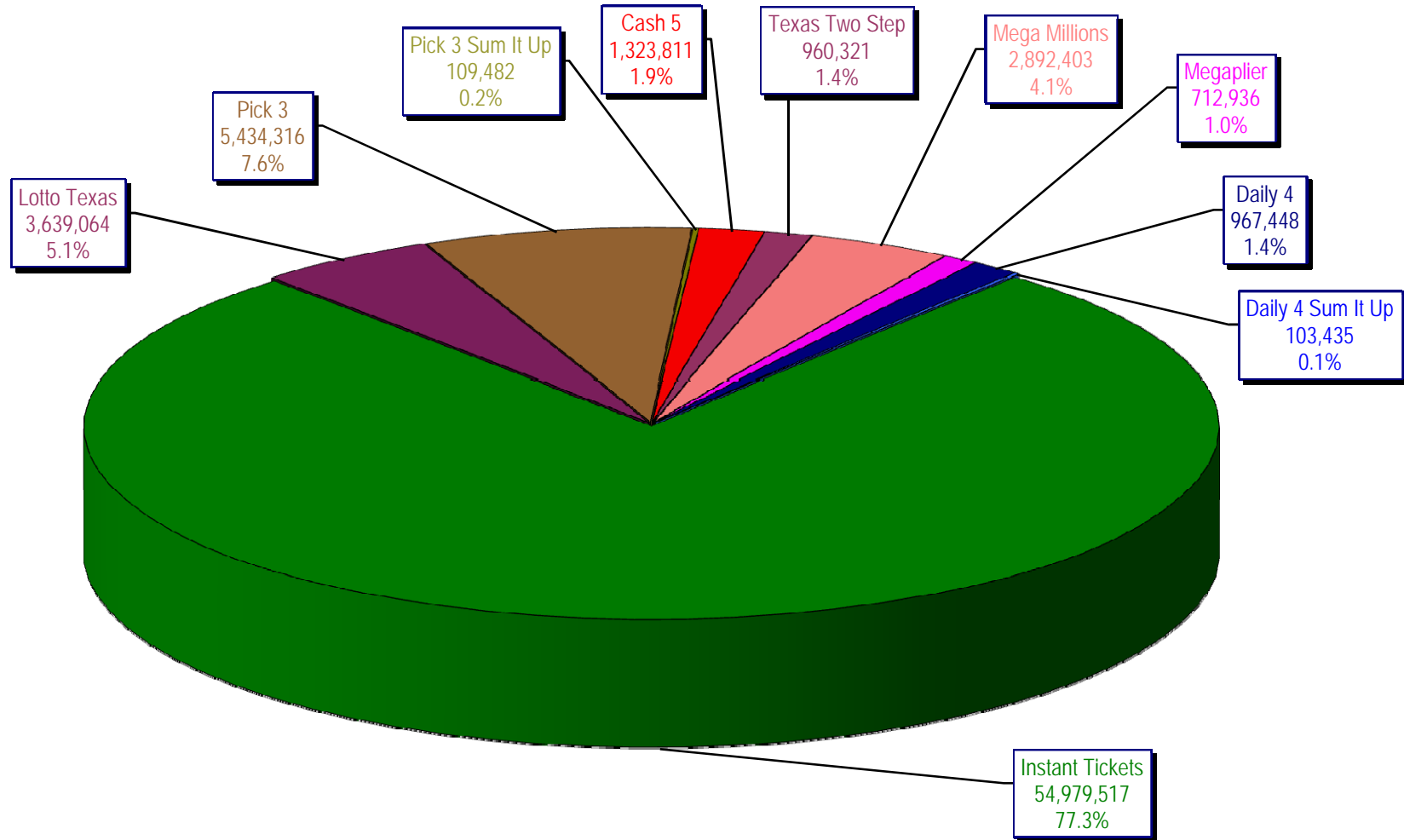
* Before Unclaimed Prizes

** Estimated; depends on # of guaranteed prizes won in Texas

Texas Lottery Commission
Instant Ticket Sales
For the Week Ending 06/13/2009
(Unaudited)



Texas Lottery Commission
All Game Sales
For the Week Ending 06/13/2009
(Unaudited)



Texas Lottery Commission - Weekly Sales Summary for FY 2009 (Unaudited)

Week Ended	Instant Games	New Games & Dates	Lotto Texas	Jackpot		Pick 3	Pick 3 Sum It Up	Cash 5	Texas Two Step	Jackpot		Mega Millions	Jackpot		Megaplier	Daily 4	Daily 4 Sum It Up	Total	Per Cap.
				W	S					M/T	TH/F		T	F					
9/6/2008	50,944,343.00	1108 (\$2,N), 1088 (\$3, N) - 9/01/08	3,378,718.00	5	6	5,436,414.00	122,123.00	1,396,622.00	890,346.00	350	450	2,445,490.00	12	16	649,090.00	786,482.50	109,834.00	66,159,462.50	2.77
9/13/2008	46,309,551.00	1109 (\$1,N), 1098 (\$5, N) - 9/08/08	3,020,089.00	7	8	4,705,585.50	105,899.00	1,279,412.00	856,199.00	600	200	2,327,214.00	24	12	617,672.00	696,633.00	96,156.50	60,014,411.00	2.51
9/20/2008	42,923,171.00	0	3,054,093.00	9	10	4,121,734.50	90,718.00	1,155,350.00	637,792.00	225	250	1,978,127.00	15	12	540,225.00	627,210.00	86,013.50	55,214,434.00	2.31
9/27/2008	47,042,801.00	1111 (\$2,N), 1099 (\$5, N) - 9/22/08	3,427,671.00	11	12	4,821,563.00	103,189.50	1,288,062.00	834,307.00	275	425	2,322,862.00	16	24	617,085.00	709,741.50	97,858.00	61,265,140.00	2.56
10/4/2008	50,747,162.00	1113 (\$1,N) 9/29/08	3,675,683.00	13	14	5,305,711.00	116,332.50	1,369,040.00	1,074,874.00	525	650	2,671,927.00	32	42	693,845.00	770,782.50	106,277.00	66,531,634.00	2.78
10/11/2008	49,763,789.00	0	3,732,365.00	15	16	5,287,094.00	114,665.50	1,370,334.00	1,305,250.00	800	975	2,306,070.00	12	16	622,120.00	778,204.00	106,395.00	65,386,286.50	2.74
10/18/2008	49,299,053.00	1117 (\$3,N), 1118 (\$20,N) - 10/13/08	3,780,438.00	17	18	5,149,258.00	109,530.00	1,355,601.00	741,849.00	200	200	2,500,644.00	23	32	652,198.00	776,366.00	102,056.00	64,466,993.00	2.70
10/25/2008	49,977,581.00	1119 (\$1,N), 1120 (\$5,N) - 10/20/08	3,210,762.00	4	5	5,099,671.00	107,104.50	1,339,079.00	789,649.00	225	275	2,456,965.00	42	12	641,206.00	778,434.00	102,972.50	64,503,424.00	2.70
11/1/2008	50,346,542.00	1121 (\$2,N), 1122 (\$10,N) - 10/27/08	3,325,641.00	6	7	5,234,124.00	109,983.00	1,339,046.00	946,035.00	375	475	2,347,596.00	16	23	626,235.00	805,572.00	104,612.50	65,185,386.50	2.73
11/8/2008	54,860,087.00	1123 (\$3,N), 1124 (\$7,N) - 11/03/08; 1103 (\$3,N) - 11/05/08; 1063 (\$3,N) - 11/07/08	3,290,417.00	4	5	5,686,701.00	118,495.00	1,397,985.00	1,158,101.00	625	750	2,729,302.50	31	42	692,662.00	871,230.00	112,175.50	70,917,156.00	2.97
11/15/2008	53,484,812.00	1125 (\$1, N), 1126 (\$5,N) - 11/10/08	3,336,934.00	6	7	5,459,984.00	112,884.00	1,366,024.00	766,955.00	200	225	3,102,251.00	51	62	749,736.00	830,957.00	104,094.00	69,314,631.00	2.90
11/22/2008	52,806,511.00	0	3,452,481.00	8	9	5,329,591.00	108,861.50	1,358,271.00	743,950.00	200	200	3,666,517.00	73	86	847,201.00	849,077.50	104,797.50	69,267,258.50	2.90
11/29/2008	52,199,741.00	1127 (\$2,N), 1128 (\$5,N) - 11/24/08	3,585,374.00	10	11	5,340,783.50	111,443.00	1,315,233.00	686,077.00	200	225	4,441,715.00	96	111	968,906.00	845,475.50	102,569.00	69,597,317.00	2.91
12/6/2008	56,731,851.00	0	3,794,991.00	12	13	5,752,593.00	121,663.50	1,416,446.00	780,328.00	250	200	6,238,355.00	128	146	1,270,214.00	881,841.50	107,357.00	77,095,640.00	3.23
12/13/2008	54,109,617.00	1129 (\$1, N) - 12/08/08	3,315,658.00	4	5	5,580,770.00	114,295.50	1,384,858.00	766,893.00	225	250	9,150,536.00	170	207	1,691,121.00	846,176.50	101,919.50	77,061,844.50	3.22
12/20/2008	55,777,328.00	1104 (\$2,N), 1105 (\$5,N), 1106 (\$10,N) - 12/15/08	3,432,340.00	6	7	5,741,120.00	116,075.50	1,401,805.00	741,945.00	200	200	2,736,234.00	12	16	687,875.00	871,579.50	104,543.00	71,610,845.00	3.00
12/27/2008	57,597,885.00	1077 (\$1,N), 1110 (\$1,N) - 12/22/08	3,582,169.00	8	4	5,628,081.50	115,323.00	1,340,590.00	708,906.00	225	250	2,842,167.00	22	29	706,042.00	828,346.00	100,146.00	73,449,655.50	3.07
1/3/2009	57,582,115.00	0	3,784,763.00	5	6	5,690,220.50	120,519.50	1,406,807.00	934,000.00	325	525	3,190,457.00	37	46	780,850.00	885,674.00	106,736.50	74,482,142.50	3.12
1/10/2009	54,250,945.00	1135 (\$2,N), 1136 (\$5,N) - 1/5/09	3,582,400.00	7	8	5,476,890.00	116,674.50	1,403,531.00	1,267,847.00	675	900	2,701,275.00	12	16	681,574.00	868,919.00	104,109.50	70,454,165.00	2.95
1/17/2009	51,625,339.00	1137 (\$1,N), 1138 (\$3,N) - 1/12/09	3,668,302.50	9	10	5,443,159.00	112,605.00	1,387,958.00	778,563.00	200	200	2,683,707.00	22	12	675,416.00	852,987.00	98,907.50	67,326,944.00	2.82
1/24/2009	52,789,573.00	1115 (\$2,N), 1116 (\$5,N) - 1/19/09	3,723,835.50	11	12	5,514,547.50	115,827.50	1,376,695.00	860,483.00	225	325	2,692,611.00	16	21	676,936.00	836,996.00	99,541.00	68,687,045.50	2.87
1/31/2009	55,453,471.00	1080 (\$1,N), 1024 (\$20,R) - 1/26/09; 1062 (\$5,N) - 1/28/09	3,837,299.00	13	14	5,700,714.50	121,794.50	1,403,756.00	1,070,879.00	450	600	3,002,883.00	30	40	731,253.00	925,937.50	113,755.50	72,361,743.00	3.03
2/7/2009	62,247,711.00	1035 (\$2,N), 1144 (\$5,N), 1058 (\$10, N) - 2/2/09	4,092,117.00	15	16	6,336,717.00	134,543.00	1,481,812.00	842,746.00	200	225	3,509,032.00	50	60	829,550.00	1,007,529.00	120,267.50	80,602,024.50	3.37
2/14/2009	60,509,056.00	1146 (\$7,N), 1089 (\$1,N) - 2/9/09	4,119,193.00	17	18	6,363,028.00	133,901.50	1,445,616.00	1,013,987.00	325	450	4,082,572.00	73	85	928,813.00	1,010,898.50	120,068.50	79,727,133.50	3.34
2/21/2009	59,194,623.00	1046 (\$2,N), 1140 (\$5,N) - 2/16/09	4,326,401.00	19	20	6,038,807.50	128,493.00	1,439,312.00	1,268,803.00	600	750	5,614,471.00	103	120	1,178,133.00	988,075.00	115,703.50	80,292,822.00	3.36
2/28/2009	58,857,216.00	1132 (\$10,N), 1149 (\$1,N) - 2/23/09	4,526,304.00	21	22	6,084,457.50	128,979.50	1,439,607.00	1,668,414.00	925	1,150	7,676,975.00	145	171	1,504,895.00	973,121.00	114,171.00	82,974,140.00	3.47

Texas Lottery Commission - Weekly Sales Summary for FY 2009 (Unaudited)

Week Ended	Instant Games	New Games & Dates	Lotto Texas	Jackpot		Pick 3	Pick 3 Sum It Up	Cash 5	Texas Two Step	Jackpot		Mega Millions	Jackpot		Megaplier	Daily 4	Daily 4 Sum It Up	Total	Per Cap.
				W	S					M/T	TH/F		T	F					
3/7/2009	59,552,257.00	0	4,928,440.00	23	25	6,133,789.00	128,599.00	1,487,185.00	1,984,358.00	1,350	1,600	6,898,457.00	212	12	1,349,427.00	971,644.50	113,236.00	83,547,392.50	3.50
3/14/2009	53,754,084.00	1139 (\$2.N), 1079 (\$5.N) - 3/09/09	4,752,592.00	26	28	5,850,166.00	120,684.50	1,418,127.00	2,112,571.00	1,900	2,150	2,782,204.00	16	26	698,214.00	925,615.00	109,657.50	72,523,915.00	3.03
3/21/2009	52,581,107.00	1107 (\$1.N), 1154 (\$3.N), 1057 (\$10.N) - 3/16/09; 1102 (\$2.N) - 3/19/09	3,437,818.00	4	5	5,776,041.50	117,294.00	1,399,720.00	880,620.00	200	225	2,595,785.00	12	16	653,517.00	934,185.00	108,057.50	68,484,145.00	2.87
3/28/2009	52,560,961.00	1130 (\$5.N), 1150 (\$10.N) - 3/23/09	3,486,731.00	6	7	5,633,454.50	114,269.50	1,381,550.00	901,673.00	300	200	2,845,499.00	24	34	701,971.00	925,093.50	104,691.50	68,655,894.00	2.87
4/4/2009	56,249,759.00	1151 (\$2.N), 1101 (\$50.N) - 3/30/09	3,746,083.00	8	9	5,893,043.50	122,332.00	1,429,598.00	940,614.00	225	300	3,321,274.00	43	54	794,282.00	998,042.00	111,733.50	73,606,761.00	3.08
4/11/2009	54,440,987.00	1153 (\$2.N) - 4/07/09; 1152 (\$3.N) - 4/08/09	3,594,176.00	10	4	5,893,551.00	120,491.50	1,394,879.00	933,807.00	425	200	3,772,700.00	65	78	857,890.00	987,127.50	105,977.50	72,101,586.50	3.02
4/18/2009	52,755,834.00	1145 (\$1.N), 1148 (\$5.N) - 4/13/09	3,462,217.00	5	6	5,627,572.00	117,123.50	1,374,682.00	829,493.00	225	200	4,960,982.00	92	109	1,040,136.00	957,161.00	100,218.50	71,225,419.00	2.98
4/25/2009	51,450,968.00	1051 (\$7.N) - 4/20/09	3,517,624.00	7	8	5,408,672.50	117,314.50	1,347,754.00	876,206.00	225	300	6,614,120.95	130	155	1,298,021.00	937,777.00	99,408.50	71,667,866.45	3.00
5/2/2009	52,327,090.00	1161 (\$1.N), 1081 (\$5.N) - 4/27/09	3,679,438.00	9	10	5,512,770.50	113,755.50	1,362,174.00	880,888.00	425	200	9,277,686.00	181	225	1,653,107.00	937,874.00	102,880.00	75,847,663.00	3.17
5/9/2009	53,214,412.00	0	3,554,635.00	11	4	5,603,106.00	118,185.50	1,389,454.00	823,436.00	225	200	2,961,748.00	12	17	718,169.00	967,592.00	104,881.00	69,455,618.50	2.91
5/16/2009	50,785,227.00	1131 (\$2.N), 1134 (\$5.N) - 5/11/09; 1165 (\$1.N), 1114 (\$20.N) - 5/18/09; 1156 (\$1.N) - 5/19/09; 1153 (\$2.N) - 5/20/09	3,332,475.00	5	6	5,417,197.00	112,501.00	1,356,843.00	842,436.00	225	275	3,116,696.00	28	38	748,141.00	959,922.50	104,332.00	66,775,770.50	2.79
5/23/2009	56,567,077.00	1049 (\$3.N) - 5/25/09	3,425,065.00	7	8	5,363,150.50	111,143.50	1,356,979.00	1,061,946.00	400	525	2,790,741.00	12	16	694,815.00	967,375.50	103,231.00	72,441,523.50	3.03
5/30/2009	55,359,239.00	1112 (\$5.N) - 6/1/09	3,480,479.00	9	10	5,329,739.50	108,222.50	1,314,598.00	1,173,008.00	650	800	2,871,590.00	25	35	705,366.00	957,423.50	99,769.00	71,399,434.50	2.99
6/6/2009	60,250,125.00	1133 (\$1.N), 1162 (\$5.N) - 6/8/09	3,656,108.00	11	12	5,806,294.00	117,692.00	1,379,840.00	833,645.00	200	225	2,696,889.00	12	17	684,660.00	1,020,540.50	105,930.50	76,551,724.00	3.20
6/13/2009	54,979,517.00		3,639,064.00	13	14	5,434,316.00	109,481.50	1,323,811.00	960,321.00	300	400	2,892,403.00	25	36	712,936.00	967,447.50	103,434.50	71,122,731.50	2.98
weekly change	-8.75%		-0.47%			-6.41%	-6.98%	-4.06%	15.20%			7.25%			4.13%	-5.20%	-2.36%	-7.09%	
	SALES		SALES			SALES	SALES	SALES	SALES			SALES			SALES	SALES	SALES	SALES	% of Sales
Startup to date	35,678,792,281.00		10,428,736,616.00			3,525,609,864.50	11,243,590.00	2,175,476,238.00	466,381,881.00			1,077,854,235.45			252,756,005.00	78,515,009.50	12,656,019.00	53,916,155,711.45	100.0%
Calendar Year to date	1,296,888,606.00		89,367,324.00			134,450,365.50	175,670.50	32,737,784.00	25,222,744.00			93,897,331.95			20,888,190.00	22,307,351.00	2,515,211.50	1,718,450,578.45	100.0%
Fiscal Year to date 2009	2,198,206,279.00		149,639,569.00			226,890,912.00	4,757,760.00	56,320,228.00	40,116,163.00			151,715,640.45			34,547,971.00	36,298,038.00	4,317,215.50	2,902,809,775.95	100.0%