



WEEKLY SALES SUMMARY

Unaudited

[Week Ending: 06/28/2014](#)

Texas Lottery Commission
Fiscal Year to Date Sales Comparison
Unaudited

Through the Week Ending 06/28/2014 (43 Weeks)

| Sales by Game | FY 2012 * | FY 2013 ** | FY 2014 | \$ Change | | % Change | |
|-------------------|-------------------------|-------------------------|-------------------------|-----------------------|-----------------------|-----------------------|-----------------------|
| | | | | FY 2014 to FY 2012 | FY 2014 to FY 2013 | FY 2014 to FY 2012 | FY 2014 to FY 2013 |
| Instants | \$ 2,584,795,063 | \$ 2,690,777,403 | \$ 2,734,750,814 | \$ 149,955,751 | \$ 43,973,411 | 5.8% | 1.6% |
| Lotto Texas | 143,766,521 | 122,611,514 | 113,885,966 | -29,880,555 | -8,725,548 | -20.8% | -7.1% |
| Lotto Extra | - | 3,555,223 | 15,534,245 | 15,534,245 | 11,979,022 | - | - |
| Pick 3 | 228,010,319 | 224,089,065 | 210,710,379 | -17,299,940 | -13,378,686 | -7.6% | -6.0% |
| Pick 3 Sum It Up | 4,716,335 | 4,213,457 | 4,179,375 | -536,960 | -34,082 | -11.4% | -0.8% |
| Cash Five | 54,945,365 | 46,612,421 | 43,649,383 | -11,295,982 | -2,963,038 | -20.6% | -6.4% |
| Texas Two Step | 53,716,190 | 49,856,591 | 47,335,575 | -6,380,615 | -2,521,016 | -11.9% | -5.1% |
| Mega Millions | 190,931,579 | 94,207,320 | 162,366,558 | -28,565,021 | 68,159,238 | -15.0% | 72.4% |
| Megaplier | 36,363,199 | 21,528,981 | 35,132,715 | -1,230,484 | 13,603,734 | -3.4% | 63.2% |
| Daily 4 | 55,825,031 | 61,575,301 | 69,088,449 | 13,263,418 | 7,513,149 | 23.8% | 12.2% |
| Daily 4 Sum It Up | 4,014,873 | 3,993,091 | 4,272,618 | 257,746 | 279,528 | 6.4% | 7.0% |
| Powerball | 134,161,703 | 243,335,410 | 173,563,893 | 39,402,191 | -69,771,517 | 29.4% | -28.7% |
| Power Play | 21,781,498 | 25,245,874 | 21,007,364 | -774,134 | -4,238,510 | -3.6% | -16.8% |
| All or Nothing | - | 62,666,685 | 39,161,263 | 39,161,263 | -23,505,422 | - | -37.5% |
| Total | \$ 3,513,027,674 | \$ 3,654,268,335 | \$ 3,674,638,597 | \$ 161,610,924 | \$ 20,370,262 | 4.6% | 0.6% |

* 3 extra days

** 1 extra day

Texas Lottery Commission
Fiscal Year to Date Cumulative Average Sales Comparison
Unaudited

Through the Week Ending 06/28/2014 (43 Weeks)

| Sales by Game | FY 2012 | FY 2013 | FY 2014 |
|-------------------|----------------------|----------------------|----------------------|
| Instants | \$ 8,502,615 | \$ 8,909,859 | \$ 9,085,551 |
| Lotto Texas | 472,916 | 405,998 | 378,359 |
| Lotto Extra | - ** | 46,172 | 51,609 |
| Pick 3 | 750,034 | 742,017 | 700,034 |
| Pick 3 Sum It Up | 15,514 | 13,952 | 13,885 |
| Cash Five | 180,741 | 154,346 | 145,015 |
| Texas Two Step | 176,698 | 165,088 | 157,261 |
| Mega Millions | 628,064 | 311,945 | 539,424 |
| Megaplier | 119,616 | 71,288 | 116,720 |
| Daily 4 | 183,635 | 203,892 | 229,530 |
| Daily 4 Sum It Up | 13,207 | 13,222 | 14,195 |
| Powerball | 441,321 | 805,746 | 576,624 |
| Power Play | 71,650 | 83,596 | 69,792 |
| All or Nothing | - * | 233,831 | 130,104 |
| | <hr/> | <hr/> | <hr/> |
| Total | \$ 11,556,012 | \$ 12,160,951 | \$ 12,208,102 |
| | <hr/> <hr/> | <hr/> <hr/> | <hr/> <hr/> |

thru 06/30/2012
304 days

thru 06/29/2013
302 days

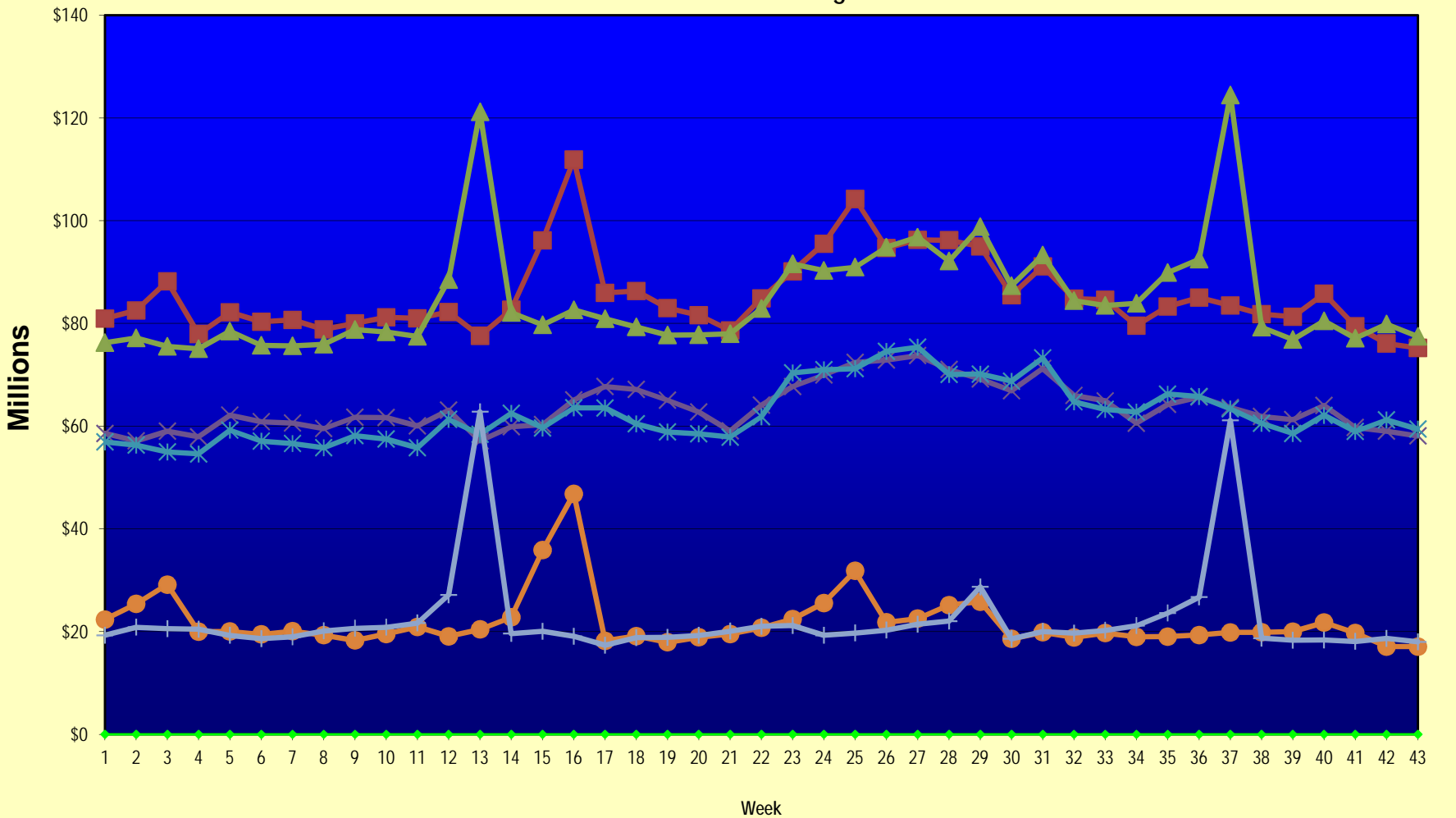
thru 06/28/2014
301 days

* 268 days
** 77 days

Texas Lottery Commission
Fiscal Year Over Year Change in Sales
Unaudited
FY 2014 Compared to FY 2013

| | | | INSTANT TICKETS | | | | DRAW GAMES | | | | TOTAL SALES | | | |
|---------|------------|--------|-----------------|--------------|---------------|--------------------------------|--------------|--------------|----------------|--------------------------------|---------------|---------------|----------------|--------------------------------|
| FY 2014 | | | FY 2014 | FY 2013 | Difference | % change - Cumulative Sales | FY 2014 | FY 2013 | Difference | % change - Cumulative Sales | FY 2014 | FY 2013 | Difference | % change - Cumulative Sales |
| Week | Week | Ending | | | | | | | | | | | | |
| 0 | 9/1/2013 * | | \$0 | \$9,611,328 | (\$9,611,328) | -100.0% | \$0 | \$3,712,535 | (\$3,712,535) | -100.0% | \$0 | \$13,323,863 | (\$13,323,863) | -100.0% |
| 1 | 9/7/2013 | | \$58,587,757 | \$56,941,761 | \$1,645,996 | 2.9% | \$22,369,499 | \$19,305,417 | \$3,064,082 | 15.9% | \$80,957,256 | \$76,247,178 | \$4,710,078 | 6.2% |
| 2 | 9/14/2013 | | \$57,135,931 | \$56,302,875 | \$833,056 | 1.5% | \$25,412,980 | \$20,857,230 | \$4,555,750 | 21.8% | \$82,548,911 | \$77,160,105 | \$5,388,806 | 7.0% |
| 3 | 9/21/2013 | | \$59,018,194 | \$54,974,438 | \$4,043,756 | 7.4% | \$29,161,241 | \$20,570,277 | \$8,590,964 | 41.8% | \$88,179,435 | \$75,544,715 | \$12,634,720 | 16.7% |
| 4 | 9/28/2013 | | \$57,927,984 | \$54,606,674 | \$3,321,310 | 6.1% | \$20,012,313 | \$20,462,690 | (\$450,378) | -2.2% | \$77,940,297 | \$75,069,364 | \$2,870,933 | 3.8% |
| 5 | 10/5/2013 | | \$62,146,816 | \$59,223,327 | \$2,923,489 | 4.9% | \$20,043,557 | \$19,279,973 | \$763,584 | 4.0% | \$82,190,373 | \$78,503,300 | \$3,687,073 | 4.7% |
| 6 | 10/12/2013 | | \$60,867,582 | \$57,075,606 | \$3,791,976 | 6.6% | \$19,480,962 | \$18,638,467 | \$842,496 | 4.5% | \$80,348,544 | \$75,714,073 | \$4,634,472 | 6.1% |
| 7 | 10/19/2013 | | \$60,612,193 | \$56,630,134 | \$3,982,059 | 7.0% | \$20,079,610 | \$18,998,943 | \$1,080,668 | 5.7% | \$80,691,803 | \$75,629,077 | \$5,062,727 | 6.7% |
| 8 | 10/26/2013 | | \$59,548,277 | \$55,789,743 | \$3,758,534 | 6.7% | \$19,319,928 | \$20,130,190 | (\$810,262) | -4.0% | \$78,868,205 | \$75,919,933 | \$2,948,273 | 3.9% |
| 9 | 11/2/2013 | | \$61,710,236 | \$58,142,777 | \$3,567,459 | 6.1% | \$18,308,976 | \$20,638,008 | (\$2,329,032) | -11.3% | \$80,019,212 | \$78,780,785 | \$1,238,427 | 1.6% |
| 10 | 11/9/2013 | | \$61,668,594 | \$57,484,804 | \$4,183,790 | 7.3% | \$19,555,070 | \$20,862,872 | (\$1,307,802) | -6.3% | \$81,223,664 | \$78,347,676 | \$2,875,988 | 3.7% |
| 11 | 11/16/2013 | | \$60,057,025 | \$55,805,228 | \$4,251,797 | 7.6% | \$20,930,071 | \$21,660,705 | (\$730,634) | -3.4% | \$80,987,096 | \$77,465,933 | \$3,521,163 | 4.5% |
| 12 | 11/23/2013 | | \$63,118,266 | \$61,331,977 | \$1,786,289 | 2.9% | \$19,086,770 | \$27,172,853 | (\$8,086,083) | -29.8% | \$82,205,036 | \$88,504,830 | (\$6,299,794) | -7.1% |
| 13 | 11/30/2013 | | \$57,145,294 | \$58,420,598 | (\$1,275,304) | -2.2% | \$20,434,618 | \$62,797,943 | (\$42,363,326) | -67.5% | \$77,579,912 | \$121,218,541 | (\$43,638,630) | -36.0% |
| 14 | 12/7/2013 | | \$59,883,783 | \$62,489,745 | (\$2,605,962) | -4.2% | \$22,791,842 | \$19,630,155 | \$3,161,687 | 16.1% | \$82,675,625 | \$82,119,900 | \$555,725 | 0.7% |
| 15 | 12/14/2013 | | \$60,310,298 | \$59,661,880 | \$648,418 | 1.1% | \$35,859,153 | \$20,064,982 | \$15,794,171 | 78.7% | \$96,169,451 | \$79,726,862 | \$16,442,589 | 20.6% |
| 16 | 12/21/2013 | | \$65,088,999 | \$63,556,886 | \$1,532,113 | 2.4% | \$46,832,745 | \$19,084,653 | \$27,748,093 | 145.4% | \$111,921,744 | \$82,641,539 | \$29,280,206 | 35.4% |
| 17 | 12/28/2013 | | \$67,721,619 | \$63,547,886 | \$4,173,733 | 6.6% | \$18,218,091 | \$17,359,874 | \$858,217 | 4.9% | \$85,939,710 | \$80,907,760 | \$5,031,950 | 6.2% |
| 18 | 1/4/2014 | | \$67,162,991 | \$60,452,721 | \$6,710,270 | 11.1% | \$19,140,745 | \$18,833,047 | \$307,698 | 1.6% | \$86,303,736 | \$79,285,768 | \$7,017,968 | 8.9% |
| 19 | 1/11/2014 | | \$65,049,914 | \$58,862,997 | \$6,186,917 | 10.5% | \$17,954,333 | \$18,879,167 | (\$924,835) | -4.9% | \$83,004,247 | \$77,742,164 | \$5,262,083 | 6.8% |
| 20 | 1/18/2014 | | \$62,731,830 | \$58,494,057 | \$4,237,773 | 7.2% | \$18,900,213 | \$19,258,004 | (\$357,791) | -1.9% | \$81,632,043 | \$77,752,061 | \$3,879,982 | 5.0% |
| 21 | 1/25/2014 | | \$59,085,886 | \$57,871,744 | \$1,214,142 | 2.1% | \$19,558,830 | \$20,093,215 | (\$534,385) | -2.7% | \$78,644,716 | \$77,964,959 | \$679,758 | 0.9% |
| 22 | 2/1/2014 | | \$64,099,096 | \$61,846,715 | \$2,252,381 | 3.6% | \$20,764,006 | \$21,032,335 | (\$268,329) | -1.3% | \$84,863,102 | \$82,879,050 | \$1,984,052 | 2.4% |
| 23 | 2/8/2014 | | \$67,717,353 | \$70,374,906 | (\$2,657,553) | -3.8% | \$22,433,672 | \$21,183,638 | \$1,250,034 | 5.9% | \$90,151,025 | \$91,558,544 | (\$1,407,520) | -1.5% |
| 24 | 2/15/2014 | | \$69,949,998 | \$71,002,438 | (\$1,052,440) | -1.5% | \$25,572,367 | \$19,295,197 | \$6,277,171 | 32.5% | \$95,522,365 | \$90,297,635 | \$5,224,731 | 5.8% |
| 25 | 2/22/2014 | | \$72,422,148 | \$71,203,934 | \$1,218,214 | 1.7% | \$31,832,665 | \$19,729,989 | \$12,102,676 | 61.3% | \$104,254,813 | \$90,933,923 | \$13,320,890 | 14.6% |
| 26 | 3/1/2014 | | \$72,883,830 | \$74,551,567 | (\$1,667,737) | -2.2% | \$21,827,140 | \$20,278,327 | \$1,548,814 | 7.6% | \$94,710,970 | \$94,829,894 | (\$118,924) | -0.1% |
| 27 | 3/8/2014 | | \$73,726,744 | \$75,360,138 | (\$1,633,394) | -2.2% | \$22,528,352 | \$21,447,763 | \$1,080,589 | 5.0% | \$96,255,096 | \$96,807,901 | (\$552,805) | -0.6% |
| 28 | 3/15/2014 | | \$71,026,808 | \$70,065,528 | \$961,280 | 1.4% | \$25,171,358 | \$22,055,563 | \$3,115,795 | 14.1% | \$96,198,166 | \$92,121,901 | \$4,077,075 | 4.4% |
| 29 | 3/22/2014 | | \$69,174,125 | \$70,137,284 | (\$963,159) | -1.4% | \$25,837,564 | \$28,709,024 | (\$2,871,460) | -10.0% | \$95,011,689 | \$98,846,308 | (\$3,834,619) | -3.9% |
| 30 | 3/29/2014 | | \$66,886,917 | \$68,758,522 | (\$1,871,605) | -2.7% | \$18,604,870 | \$18,597,091 | \$7,779 | 0.0% | \$85,491,787 | \$87,355,613 | (\$1,863,827) | -2.1% |
| 31 | 4/5/2014 | | \$71,218,020 | \$73,270,054 | (\$2,052,034) | -2.8% | \$19,883,667 | \$20,048,992 | (\$165,325) | -0.8% | \$91,101,687 | \$93,319,046 | (\$2,217,359) | -2.4% |
| 32 | 4/12/2014 | | \$65,970,648 | \$64,738,900 | \$1,231,748 | 1.9% | \$18,875,485 | \$19,697,793 | (\$822,308) | -4.2% | \$84,846,133 | \$84,436,693 | \$409,440 | 0.5% |
| 33 | 4/19/2014 | | \$64,922,280 | \$63,252,072 | \$1,670,208 | 2.6% | \$19,723,048 | \$20,245,083 | (\$522,036) | -2.6% | \$84,645,328 | \$83,497,155 | \$1,148,173 | 1.4% |
| 34 | 4/26/2014 | | \$60,578,829 | \$62,766,647 | (\$2,187,818) | -3.5% | \$18,978,148 | \$21,162,888 | (\$2,184,740) | -10.3% | \$79,556,977 | \$83,929,535 | (\$4,372,558) | -5.2% |
| 35 | 5/3/2014 | | \$64,244,545 | \$66,251,082 | (\$2,006,537) | -3.0% | \$19,029,632 | \$23,628,101 | (\$4,598,469) | -19.5% | \$83,274,177 | \$89,879,183 | (\$6,605,006) | -7.3% |
| 36 | 5/10/2014 | | \$65,679,029 | \$65,748,723 | (\$69,694) | -0.1% | \$19,350,478 | \$26,735,480 | (\$7,385,003) | -27.6% | \$85,029,507 | \$92,484,203 | (\$7,454,697) | -8.1% |
| 37 | 5/17/2014 | | \$63,627,971 | \$63,348,463 | \$279,508 | 0.4% | \$19,865,609 | \$61,124,604 | (\$41,258,995) | -67.5% | \$83,493,580 | \$124,473,067 | (\$40,979,487) | -32.9% |
| 38 | 5/24/2014 | | \$61,902,451 | \$60,537,133 | \$1,365,318 | 2.3% | \$19,892,846 | \$18,730,138 | \$1,162,709 | 6.2% | \$81,795,297 | \$79,267,271 | \$2,528,027 | 3.2% |
| 39 | 5/31/2014 | | \$61,264,953 | \$58,547,555 | \$2,717,398 | 4.6% | \$20,014,636 | \$18,317,891 | \$1,696,745 | 9.3% | \$81,279,589 | \$76,865,446 | \$4,414,143 | 5.7% |
| 40 | 6/7/2014 | | \$64,019,948 | \$62,113,508 | \$1,906,440 | 3.1% | \$21,782,886 | \$18,374,935 | \$3,407,951 | 18.5% | \$85,802,834 | \$80,488,443 | \$5,314,391 | 6.6% |

Texas Lottery Commission Fiscal Year Over Year Change in Sales



◆ Week
 ■ Total Sales 2014
 ▲ Total Sales 2013
 × Instant Tickets 2014
 ✱ Instant Tickets 2013
 ● Draw Games 2014
 + Draw Games 2013

Note: Week 1 is not a full week of sales as this report is prepared on a Fiscal Year basis.

Texas Lottery Commission
Instant Tickets by Price Point
Sales, Prize Expense, Sales Contribution and Payout Percentage With Year Over Year Changes
Unaudited

| Fiscal Year | Price Point | # of Active Games | FY Sales | % of Instant Ticket Sales | Year over Year Change in Sales | FY Prize Expense | Year over Year Change in Prize Expense | FY Sales Contribution | Year over Year Change in Contribution | Average Prize Payout % | Year over Year Change in Payout % |
|--------------|-------------|-------------------|------------------------|---------------------------|--------------------------------|------------------------|--|-----------------------|---------------------------------------|------------------------|-----------------------------------|
| 2013 | \$1.00 | 33 | 162,145,108 | 6.0% | | 98,656,981 | | 63,488,127 | | 60.8% | 0.4% |
| Through | \$2.00 | 39 | 333,314,358 | 12.4% | | 216,665,369 | | 116,648,989 | | 65.0% | -0.1% |
| 6/29/2013 | \$3.00 | 22 | 321,250,914 | 11.9% | | 210,472,470 | | 110,778,444 | | 65.5% | 0.0% |
| | \$5.00 | 59 | 858,870,770 | 31.9% | | 584,384,773 | | 274,485,997 | | 68.0% | 0.1% |
| | \$7.00 | 2 | 16,198,063 | 0.6% | | 11,009,277 | | 5,188,786 | | 68.0% | 0.0% |
| | \$10.00 | 14 | 489,709,720 | 18.2% | | 348,178,286 | | 141,531,434 | | 71.1% | 0.3% |
| | \$20.00 | 9 | 384,550,620 | 14.3% | | 287,906,094 | | 96,644,526 | | 74.9% | 0.1% |
| | \$50.00 | 3 | 124,737,850 | 4.6% | | 96,842,675 | | 27,895,175 | | 77.6% | 0.0% |
| Total | | 181 | \$2,690,777,403 | | | \$1,854,115,925 | | \$836,661,478 | | 68.9% | 0.4% |
| 2014 | \$1.00 | 31 | 153,993,482 | 5.6% | | 92,276,407 | | 61,717,075 | | 59.9% | -1.3% |
| thru | \$2.00 | 39 | 313,738,962 | 11.5% | | 203,689,859 | | 110,049,103 | | 64.9% | -0.1% |
| 6/28/2014 | \$3.00 | 18 | 295,747,950 | 10.8% | | 193,904,213 | | 101,843,737 | | 65.6% | 0.1% |
| | \$5.00 | 54 | 892,958,770 | 32.7% | | 606,511,985 | | 286,446,785 | | 67.9% | -0.2% |
| | \$7.00 | 0 | 0 | 0.0% | | 0 | | 0 | | 0.0% | 0.0% |
| | \$10.00 | 16 | 510,056,150 | 18.7% | | 358,424,264 | | 151,631,886 | | 70.3% | -1.1% |
| | \$20.00 | 10 | 453,559,600 | 16.6% | | 339,577,178 | | 113,982,422 | | 74.9% | 0.0% |
| | \$50.00 | 3 | 114,695,900 | 4.2% | | 89,071,323 | | 25,624,577 | | 77.7% | 0.0% |
| Total | | 171 | \$2,734,750,814 | | | \$1,883,455,228 | | \$851,295,586 | | 68.9% | -0.1% |
| Variance | \$1.00 | -2 | -8,151,626 | | -5.0% | -6,380,574 | -6.5% | -1,771,052 | -2.8% | -0.92% | |
| 2014 to | \$2.00 | 0 | -19,575,396 | | -5.9% | -12,975,510 | -6.0% | -6,599,886 | -5.7% | -0.08% | |
| 2013 | \$3.00 | -4 | -25,502,964 | | -7.9% | -16,568,257 | -7.9% | -8,934,707 | -8.1% | 0.05% | |
| | \$5.00 | -5 | 34,088,000 | | 4.0% | 22,127,212 | 3.8% | 11,960,788 | 4.4% | -0.12% | |
| | \$7.00 | -2 | -16,198,063 | | -100.0% | -11,009,277 | -100.0% | -5,188,786 | -100.0% | -67.97% | |
| | \$10.00 | 2 | 20,346,430 | | 4.2% | 10,245,978 | 2.9% | 10,100,452 | 7.1% | -0.83% | |
| | \$20.00 | 1 | 69,008,980 | | 17.9% | 51,671,084 | 17.9% | 17,337,896 | 17.9% | 0.00% | |
| | \$50.00 | 0 | -10,041,950 | | -8.1% | -7,771,352 | -8.0% | -2,270,598 | -8.1% | 0.02% | |
| Total | | -10 | \$43,973,411 | | 1.6% | \$29,339,303 | 1.6% | \$14,634,108 | 1.7% | 0.00% | |

Notes - Instant Ticket Variances

Texas Lottery Commission
Instant Tickets by Price Point
Sales, Prize Expense, Sales Contribution and Payout Percentage With Year Over Year Changes
 Unaudited

| | | | FY 2014 | | FY 2013 | Difference |
|--------------|-------------|---|-----------------|--|-----------------|---------------|
| Sales | \$1 - \$7 | 1 | \$1,656,439,164 | | \$1,691,779,213 | -\$35,340,049 |
| Prize Exp. | \$1 - \$7 | 1 | \$1,096,382,464 | | \$1,121,188,870 | -\$24,806,406 |
| Sales Cont. | \$1 - \$7 | 1 | \$560,056,700 | | \$570,590,343 | -\$10,533,643 |
| Prize Exp. % | \$1 - \$7 | 1 | 66.2% | | 66.3% | -0.1% |
| | | | | | | |
| | | | FY 2014 | | FY 2013 | Difference |
| Sales | \$10 - \$50 | 2 | \$1,078,311,650 | | \$998,998,190 | \$79,313,460 |
| Prize Exp. | \$10 - \$50 | 2 | \$787,072,765 | | \$732,927,056 | \$54,145,709 |
| Sales Cont. | \$10 - \$50 | 1 | \$291,238,885 | | \$266,071,134 | \$25,167,751 |
| Prize Exp. % | \$10 - \$50 | 2 | 73.0% | | 73.4% | -0.4% |
| | | | | | | |
| | | | FY 2014 | | FY 2013 | Difference |
| Sales | Instant | | \$2,734,750,814 | | \$2,690,777,403 | \$43,973,411 |
| Prize Exp. | Instant | | \$1,883,455,228 | | \$1,854,115,925 | \$29,339,303 |
| Sales Cont. | Instant | | \$851,295,586 | | \$836,661,478 | \$14,634,108 |
| Prize Exp. % | Instant | | 68.9% | | 68.9% | 0.0% |

| | | | FY 2014 | | FY 2013 | Difference |
|--------------|-------------|--|-----------------|--|-----------------|---------------|
| Sales | \$1 - \$10 | | \$2,166,495,314 | | \$2,181,488,933 | -\$14,993,619 |
| Prize Exp. | \$1 - \$10 | | \$1,454,806,727 | | \$1,469,367,156 | -\$14,560,429 |
| Sales Cont. | \$1 - \$10 | | \$711,688,587 | | \$712,121,777 | -\$433,190 |
| Prize Exp. % | \$1 - \$10 | | 67.2% | | 67.4% | -0.2% |
| | | | | | | |
| | | | FY 2014 | | FY 2013 | Difference |
| Sales | \$20 - \$50 | | \$568,255,500 | | \$509,288,470 | \$58,967,030 |
| Prize Exp. | \$20 - \$50 | | \$428,648,501 | | \$384,748,769 | \$43,899,732 |
| Sales Cont. | \$20 - \$50 | | \$139,606,999 | | \$124,539,701 | \$15,067,298 |
| Prize Exp. % | \$20 - \$50 | | 75.4% | | 75.5% | -0.1% |
| | | | | | | |
| | | | FY 2014 | | FY 2013 | Difference |
| Sales | Instant | | \$2,734,750,814 | | \$2,690,777,403 | \$43,973,411 |
| Prize Exp. | Instant | | \$1,883,455,228 | | \$1,854,115,925 | \$29,339,303 |
| Sales Cont. | Instant | | \$851,295,586 | | \$836,661,478 | \$14,634,108 |
| Prize Exp. % | Instant | | 68.9% | | 68.9% | 0.0% |

Texas Lottery Commission
 Weekly Sales Summary
 & Comparison to Previous Week
 Unaudited

| | Week Ending 06/28/2014 | | Week Ending 06/21/2014 | | | |
|-----------------------|---------------------------|---------------|---------------------------|---------------|-------------------|-----------------|
| | <u>THIS WEEK</u> | % of Sales | <u>LAST WEEK</u> | % of Sales | <u>\$ change</u> | <u>% change</u> |
| Total Sales | <u>\$75,737,927</u> | | <u>\$76,106,199</u> | | <u>-\$368,272</u> | -0.48% |
| Instant Tickets | <u>\$58,102,191</u> | 76.7% | <u>\$59,010,863</u> | 77.5% | <u>-\$908,672</u> | -1.54% |
| Lotto | \$2,270,573 | 3.0% | \$2,267,120 | 3.0% | \$3,453 | 0.15% |
| Lotto Extra | \$334,231 | 0.4% | \$331,927 | 0.4% | \$2,304 | 0.69% |
| Pick 3 | \$4,769,467 | 6.3% | \$4,833,500 | 6.4% | -\$64,033 | -1.32% |
| Pick 3 Sum It Up | \$107,619 | 0.1% | \$110,287 | 0.1% | -\$2,668 | -2.42% |
| Cash Five | \$959,228 | 1.3% | \$968,542 | 1.3% | -\$9,314 | -0.96% |
| Texas Two Step | \$1,465,555 | 1.9% | \$1,111,405 | 1.5% | \$354,150 | 31.87% |
| Mega Millions | \$1,785,377 | 2.4% | \$1,726,321 | 2.3% | \$59,056 | 3.42% |
| Megaplier | \$458,307 | 0.6% | \$445,076 | 0.6% | \$13,231 | 2.97% |
| Daily 4 | \$1,486,906 | 2.0% | \$1,512,466 | 2.0% | -\$25,560 | -1.69% |
| Daily 4 Sum It Up | \$89,032 | 0.1% | \$93,886 | 0.1% | -\$4,854 | -5.17% |
| Powerball | \$2,759,703 | 3.6% | \$2,546,032 | 3.3% | \$213,671 | 8.39% |
| Power Play | \$375,911 | 0.5% | \$353,483 | 0.5% | \$22,428 | 6.34% |
| All or Nothing | \$773,828 | 1.0% | \$795,292 | 1.0% | -\$21,464 | -2.70% |
| Total Draw Game Sales | <u>\$17,635,736</u> | | <u>\$17,095,336</u> | | <u>\$540,401</u> | 3.16% |

* Totals may not sum due to rounding.

Texas Lottery Commission
Weekly Sales Summary
Unaudited

INSTANT TICKETS
TOP TEN SELLING GAMES

For the Week Ending: 06/28/14

| Rank | Price Point | Game | Sales (Millions) |
|------|-------------|---------------------------|------------------|
| 1 | \$ 20 | INSTANT MILLIONS | \$ 3.419 |
| 2 | \$ 20 | 100X THE CASH | \$ 2.918 |
| 3 | \$ 50 | MILLIONNAIRE'S CLUB | \$ 2.798 |
| 4 | \$ 10 | PLATINUM PAYOUT | \$ 2.414 |
| 5 | \$ 10 | 50X THE CASH | \$ 2.348 |
| 6 | \$ 5 | \$100,000 CASHWORD-O-RAMA | \$ 2.044 |
| 7 | \$ 3 | LOTERIA | \$ 1.953 |
| 8 | \$ 10 | ULTIMATE CROSSWORD | \$ 1.942 |
| 9 | \$ 3 | BONUS CASHWORD | \$ 1.855 |
| 10 | \$ 10 | JUMBO CASH DOUBLER | \$ 1.637 |

Texas Lottery Commission
Prize Payout Tracking Report
Unaudited

Through the Week Ending 06/28/14

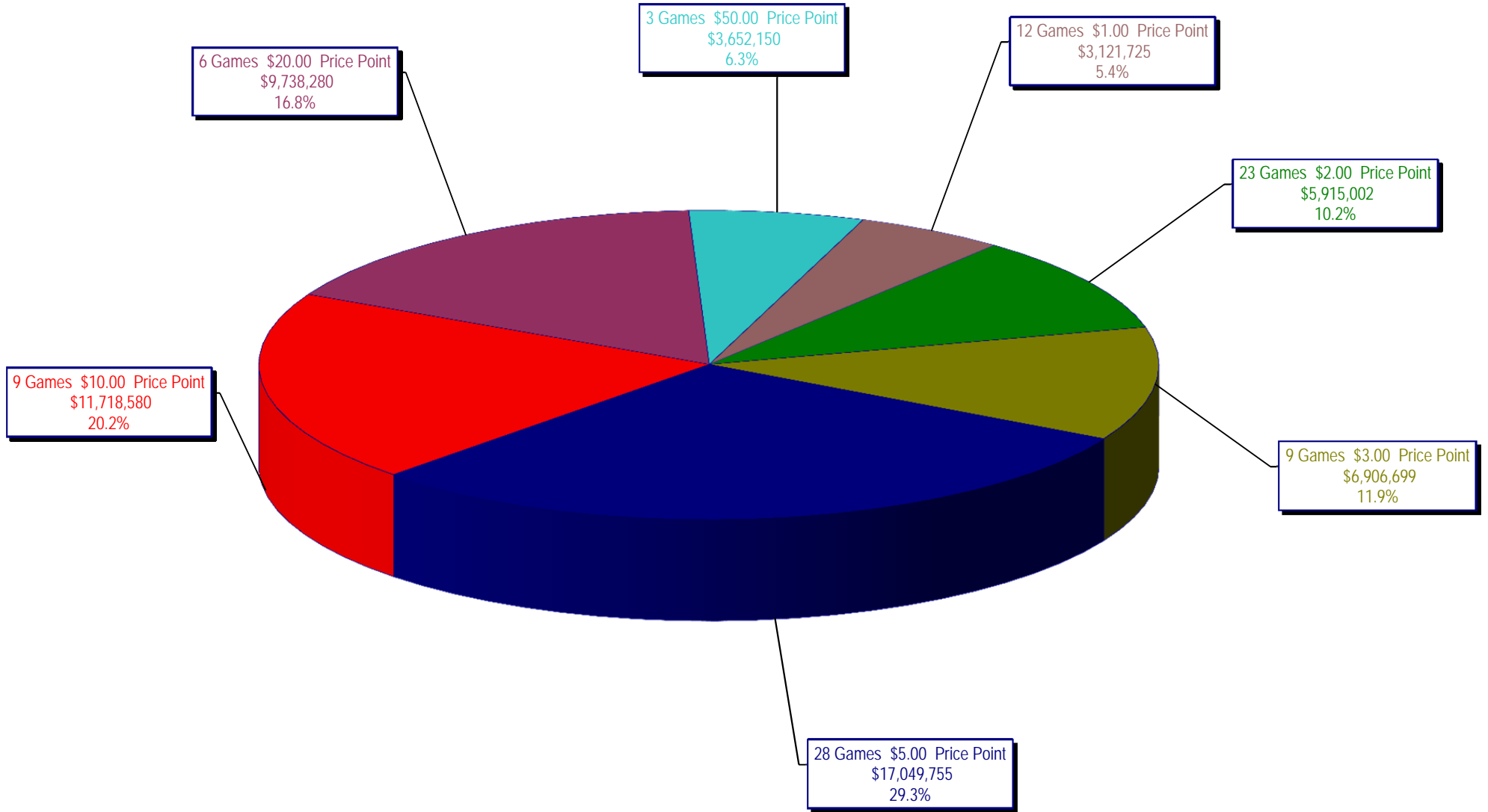
Draw Game Sales

| | | FY Sales Through Week Ending 6/28/2014 | | FY Prize Expense Through Week Ending 6/28/2014 | Actual* Prize Payout | Base Payout (Prize Pool) |
|-------------------|----|---|----|---|-------------------------|-----------------------------|
| Lotto | \$ | 113,885,966 | \$ | 58,123,804 | 51.04% | 54.00% |
| Lotto Extra | | 15,534,245 | | 8,257,454 | 53.16% | 53.70% |
| Pick 3 | | 210,710,379 | | 102,127,690 | 48.47% | 50.00% |
| Pick 3 Sum It Up | | 4,179,375 | | 1,918,954 | 45.91% | 50.00% |
| Cash Five | | 43,649,383 | | 21,824,832 | 50.00% | 50.00% |
| Texas Two Step | | 47,335,575 | | 23,767,294 | 50.21% | 50.00% |
| Mega Millions | | 162,366,558 | | 83,018,992 | 51.13% | 50.00%** |
| Megaplier | | 35,132,715 | | 16,738,432 | 47.64% | N/A |
| Daily 4 | | 69,088,449 | | 35,227,225 | 50.99% | 50.00% |
| Daily 4 Sum It Up | | 4,272,618 | | 3,524,779 | 82.50% | 50.00% |
| Powerball | | 173,563,893 | | 86,461,664 | 49.82% | 50.00%** |
| Power Play | | 21,007,364 | | 9,866,065 | 46.96% | N/A |
| All or Nothing | | 39,161,263 | | 23,382,498 | 59.71% | 55.98% |
| Totals | \$ | 939,887,783 | \$ | 474,239,682 | 50.46% | |

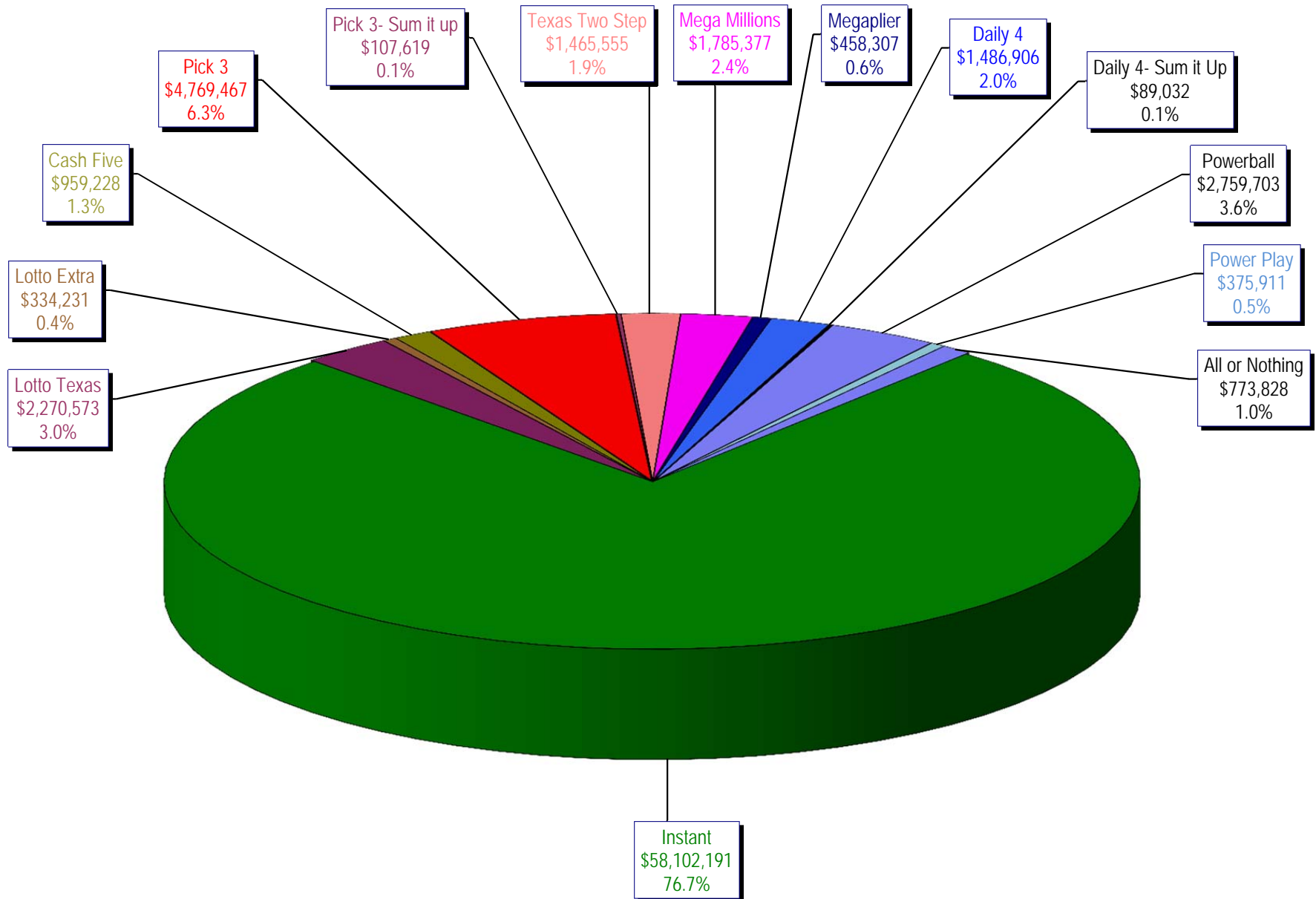
* Before Unclaimed Prizes

** Estimated; depends on # of guaranteed prizes won in Texas

Texas Lottery Commission
Instant Ticket Sales
For the Week Ending 06/28/14
(Unaudited)



Texas Lottery Commission
All Game Sales
For the Week Ending 06/28/14
(Unaudited)



Texas Lottery Commission - Weekly Sales Summary for FY 2014 (Unaudited)

| Week Ended | Instant Games | New Games & Dates | Lotto Texas | Jackpot W | S | Lotto Extra | Pick 3 | Pick 3 Sum It Up | Cash Five | Texas Two Step | Jackpot M | TH | Mega Millions | Jackpot T | F | Megaplier | Daily 4 | Daily 4 Sum It Up | Powerball | Jackpot W | S | Power Play | All or Nothing | Total | Per Cap. |
|------------|---------------|---|-------------|-----------|-------|-------------|-----------|------------------|-----------|----------------|-----------|-------|---------------|-----------|-----|-----------|-----------|-------------------|------------|-----------|-----|------------|----------------|-------------|----------|
| 9/7/2013 | 58,587,757 | 0 | 2,677,829 | 8 | 9 | 329,933 | 4,945,500 | 89,456 | 1,036,149 | 1,417,992 | 600 | 775 | 2,409,195 | 85 | 95 | 540,148 | 1,453,721 | 84,220 | 5,730,736 | 169 | 203 | 650,070 | 1,004,550 | 80,957,256 | 3.11 |
| 9/14/2013 | 57,135,931 | 1554 (\$1.N); 1555 (\$2.N); 1556 (\$5.N); 1557 (\$10.N) - 09/09/13 | 2,667,851 | 9.75 | 10.75 | 331,113 | 4,795,787 | 98,347 | 1,011,617 | 1,209,874 | 1,000 | 200 | 2,942,905 | 106 | 119 | 623,938 | 1,431,261 | 87,188 | 8,313,548 | 245 | 317 | 861,842 | 1,037,710 | 82,548,911 | 3.17 |
| 9/21/2013 | 59,018,194 | 0 | 2,793,973 | 11.50 | 12.50 | 346,650 | 4,806,820 | 94,670 | 1,008,752 | 908,904 | 225 | 300 | 3,395,333 | 130 | 145 | 704,431 | 1,513,941 | 92,441 | 11,449,786 | 400 | 40 | 1,072,426 | 973,114 | 88,179,435 | 3.38 |
| 9/28/2013 | 57,927,984 | 1558 (\$2.N); 1523 (\$5.N) - 09/23/13 | 2,653,111 | 13.25 | 14 | 329,426 | 4,679,375 | 95,344 | 994,775 | 852,100 | 200 | 225 | 3,688,920 | 160 | 173 | 744,933 | 1,523,950 | 94,444 | 3,041,612 | 50 | 60 | 392,576 | 921,748 | 77,940,297 | 2.99 |
| 10/5/2013 | 62,146,816 | 0 | 2,758,867 | 15 | 15.75 | 341,320 | 5,022,201 | 105,398 | 1,038,159 | 842,921 | 200 | 200 | 2,878,147 | 189 | 12 | 615,856 | 1,694,849 | 108,583 | 3,263,494 | 70 | 86 | 416,767 | 956,996 | 82,190,373 | 3.15 |
| 10/12/2013 | 60,867,582 | 1560 (\$1.N); 1561 (\$5.N); 1562 (\$20.N) - 10/7/13 | 2,820,574 | 16.5 | 17.75 | 348,512 | 4,834,261 | 97,324 | 1,011,724 | 926,156 | 225 | 300 | 1,819,995 | 14 | 22 | 440,456 | 1,607,225 | 100,756 | 4,066,595 | 108 | 133 | 489,491 | 917,894 | 80,348,544 | 3.08 |
| 10/19/2013 | 60,612,193 | 0 | 2,709,127 | 18.5 | 19.5 | 339,742 | 4,805,913 | 93,251 | 998,546 | 1,120,862 | 425 | 575 | 1,852,326 | 29 | 37 | 442,957 | 1,595,838 | 97,700 | 4,606,577 | 156 | 186 | 533,660 | 883,112 | 80,691,803 | 3.10 |
| 10/26/2013 | 59,548,277 | 1563 (\$2.N); 1564 (\$5.N); 1571 (\$10.N) - 10/21/13 | 2,318,924 | 5 | 5.25 | 297,319 | 4,702,074 | 92,890 | 991,912 | 830,330 | 200 | 225 | 2,138,960 | 55 | 65 | 514,665 | 1,635,640 | 102,731 | 4,306,600 | 216 | 40 | 503,870 | 884,014 | 78,868,205 | 3.03 |
| 11/2/2013 | 61,710,236 | 0 | 2,370,679 | 5.5 | 5.75 | 307,933 | 4,842,493 | 96,454 | 1,006,508 | 1,034,914 | 300 | 425 | 2,200,241 | 75 | 87 | 518,514 | 1,660,955 | 106,051 | 2,890,169 | 50 | 60 | 385,390 | 888,676 | 80,019,212 | 3.07 |
| 11/9/2013 | 61,668,594 | 1572 (\$1.N); 1565 (\$2.N); 1524 (\$3.N); 1568 (\$5.N) - 11/4/13 | 2,396,719 | 6 | 6.25 | 311,322 | 4,959,973 | 98,589 | 1,019,624 | 1,380,347 | 550 | 750 | 2,599,262 | 99 | 115 | 596,031 | 1,673,137 | 105,122 | 3,109,692 | 70 | 87 | 407,994 | 897,258 | 81,223,664 | 3.12 |
| 11/16/2013 | 60,057,025 | 0 | 2,449,602 | 5 | 5.25 | 316,977 | 4,845,025 | 95,215 | 1,003,854 | 1,690,863 | 925 | 1,150 | 2,988,792 | 132 | 149 | 652,956 | 1,660,309 | 102,225 | 3,786,446 | 110 | 130 | 477,532 | 860,276 | 80,987,096 | 3.11 |
| 11/23/2013 | 63,118,266 | 1570 (\$5.N); 1534 (\$10.N) - 11/18/13 | 2,325,678 | 5.5 | 5.75 | 307,020 | 4,702,460 | 91,204 | 1,007,524 | 839,877 | 200 | 200 | 3,473,057 | 165 | 181 | 764,548 | 1,628,437 | 98,799 | 2,637,760 | 40 | 50 | 349,338 | 861,068 | 82,205,036 | 3.15 |
| 11/30/2013 | 57,145,294 | 0 | 2,347,756 | 6 | 6.25 | 316,771 | 4,679,492 | 88,857 | 973,403 | 776,086 | 200 | 225 | 4,569,734 | 205 | 230 | 1,000,837 | 1,608,510 | 94,189 | 2,810,754 | 60 | 70 | 382,022 | 786,208 | 77,579,912 | 2.98 |
| 12/7/2013 | 59,883,783 | 1566 (\$1.N); 1569 (\$2.N); 1573 (\$5.N) - 12/2/13 | 2,331,362 | 6.5 | 6.75 | 316,270 | 4,952,771 | 96,865 | 1,015,927 | 1,020,004 | 275 | 400 | 5,741,567 | 257 | 297 | 1,198,980 | 1,631,318 | 101,968 | 3,155,910 | 81 | 100 | 414,551 | 814,350 | 82,675,625 | 3.17 |
| 12/14/2013 | 60,310,298 | 0 | 2,603,406 | 7 | 7.5 | 350,906 | 4,822,366 | 97,730 | 1,030,204 | 871,221 | 200 | 225 | 16,197,376 | 344 | 425 | 3,066,851 | 1,589,967 | 97,081 | 3,822,338 | 122 | 40 | 474,169 | 835,538 | 96,169,451 | 3.69 |
| 12/21/2013 | 65,088,999 | 1574 (\$2.N); 1553 (\$5.N); 1575 (\$5.N); 1527 (\$5.N) - 12/16/13 | 2,815,414 | 8.25 | 9.25 | 368,182 | 4,892,286 | 95,782 | 1,050,520 | 1,116,072 | 300 | 425 | 25,841,595 | 636 | 15 | 4,595,950 | 1,585,576 | 97,477 | 3,131,858 | 50 | 60 | 400,544 | 841,490 | 111,921,744 | 4.29 |
| 12/28/2013 | 67,721,619 | 0 | 2,596,331 | 10.25 | 11 | 341,585 | 4,690,135 | 90,390 | 1,003,520 | 1,411,162 | 575 | 750 | 2,285,066 | 22 | 35 | 548,074 | 1,499,570 | 86,959 | 2,535,486 | 74 | 40 | 336,624 | 793,190 | 85,939,710 | 3.30 |
| 1/4/2014 | 67,162,991 | 1576 (\$1.N); 1578 (\$2.N); 1577 (\$5.N); 1583 (\$20.N) - 12/30/13 | 2,629,992 | 12 | 5 | 358,813 | 4,919,345 | 99,929 | 1,058,257 | 1,214,919 | 925 | 200 | 2,672,673 | 47 | 61 | 638,195 | 1,606,323 | 97,833 | 2,637,100 | 50 | 60 | 354,730 | 852,636 | 86,303,736 | 3.31 |
| 1/11/2014 | 65,049,914 | 0 | 2,402,438 | 5.25 | 5.5 | 322,712 | 4,723,459 | 101,599 | 1,033,400 | 892,832 | 200 | 225 | 2,057,530 | 15 | 20 | 512,659 | 1,602,758 | 101,833 | 2,840,522 | 70 | 80 | 372,135 | 990,456 | 83,004,247 | 3.19 |
| 1/18/2014 | 62,731,830 | 0 | 2,416,331 | 5.75 | 6 | 328,188 | 4,874,532 | 103,886 | 1,032,448 | 901,651 | 200 | 225 | 2,144,988 | 30 | 41 | 527,525 | 1,674,177 | 109,721 | 3,279,015 | 93 | 113 | 413,436 | 1,094,315 | 81,632,043 | 3.13 |
| 1/25/2014 | 59,085,886 | 1624 (\$1.N); 1579 (\$5.N); 1582 (\$5.N); 1580 (\$10.N) - 1/20/14 | 2,443,279 | 6.25 | 6.5 | 330,291 | 4,687,896 | 96,394 | 1,004,790 | 1,092,856 | 325 | 450 | 2,142,276 | 51 | 62 | 524,248 | 1,582,601 | 100,004 | 3,971,399 | 131 | 152 | 494,325 | 1,088,472 | 78,644,716 | 3.02 |
| 2/1/2014 | 64,099,096 | 0 | 2,415,768 | 6.75 | 7 | 326,816 | 4,679,783 | 93,543 | 1,000,539 | 1,428,989 | 600 | 775 | 2,351,465 | 71 | 84 | 559,791 | 1,587,672 | 100,970 | 4,626,436 | 171 | 194 | 545,304 | 1,046,930 | 84,863,102 | 3.26 |
| 2/8/2014 | 67,717,353 | 0 | 2,424,777 | 7.5 | 8.25 | 333,468 | 4,946,622 | 96,619 | 1,027,094 | 1,178,237 | 975 | 200 | 2,637,046 | 94 | 107 | 620,960 | 1,605,517 | 98,812 | 5,776,124 | 215 | 247 | 656,441 | 1,031,956 | 90,151,025 | 3.46 |
| 2/15/2014 | 69,949,998 | 1586 (\$1.N); 1585 (\$5.N); 1514 (\$5.N) - 2/10/14 | 2,533,488 | 9 | 10 | 351,303 | 5,055,980 | 100,904 | 1,032,811 | 975,226 | 225 | 300 | 3,060,766 | 122 | 139 | 694,915 | 1,680,432 | 106,042 | 8,080,522 | 284 | 330 | 872,628 | 1,027,352 | 95,522,365 | 3.67 |
| 2/22/2014 | 72,422,148 | 1634 (\$3.N) - 2/14/14 | 2,768,255 | 10.75 | 11.75 | 380,632 | 5,048,030 | 99,913 | 1,043,143 | 994,476 | 425 | 200 | 3,835,706 | 154 | 172 | 848,812 | 1,645,407 | 100,415 | 12,813,758 | 400 | 40 | 1,231,417 | 1,022,702 | 104,254,813 | 4.00 |
| 3/1/2014 | 72,883,830 | 0 | 2,718,848 | 12.5 | 13.5 | 380,343 | 5,253,349 | 103,034 | 1,066,598 | 971,167 | 225 | 300 | 4,270,929 | 195 | 216 | 950,183 | 1,704,205 | 107,640 | 2,886,022 | 50 | 60 | 403,556 | 1,011,268 | 94,710,970 | 3.63 |
| 3/8/2014 | 73,726,744 | 1614 (\$2.N); 1588 (\$5.N); 1490 (\$10.N) - 3/3/14 | 2,650,294 | 14 | 15 | 372,782 | 5,281,129 | 102,990 | 1,076,711 | 903,269 | 200 | 225 | 5,112,925 | 240 | 270 | 1,113,131 | 1,721,547 | 109,954 | 2,723,748 | 40 | 50 | 381,087 | 978,786 | 96,255,096 | 3.69 |
| 3/15/2014 | 71,026,808 | 1627 (\$1.N) - 3/10/14 | 2,664,772 | 16 | 16.75 | 377,917 | 4,978,603 | 96,135 | 1,036,335 | 1,121,612 | 325 | 450 | 7,445,090 | 309 | 353 | 1,562,488 | 1,630,709 | 99,844 | 2,855,025 | 60 | 70 | 396,181 | 906,848 | 96,198,166 | 3.69 |
| 3/22/2014 | 69,174,125 | 0 | 2,812,622 | 17.25 | 18.5 | 395,521 | 4,935,006 | 95,517 | 1,040,486 | 1,074,356 | 600 | 200 | 7,690,227 | 400 | 15 | 1,602,290 | 1,614,173 | 96,650 | 3,132,271 | 80 | 96 | 420,743 | 927,702 | 95,011,689 | 3.65 |
| 3/29/2014 | 66,886,917 | 0 | 2,870,677 | 19.25 | 20.25 | 401,476 | 5,067,908 | 98,075 | 1,031,410 | 996,888 | 225 | 325 | 2,049,072 | 20 | 15 | 524,470 | 1,624,579 | 95,370 | 2,564,845 | 40 | 50 | 355,139 | 924,962 | 85,491,787 | 3.28 |
| 4/5/2014 | 71,218,020 | 1521 (\$1.N); 1587 (\$2.N); 1530 (\$3.N); 1623 (\$5.N); 1567 (\$10.N) - 3/31/14 | 3,065,195 | 21 | 22.25 | 430,041 | 5,211,400 | 103,070 | 1,076,215 | 1,284,908 | 475 | 625 | 2,153,503 | 20 | 30 | 548,883 | 1,671,500 | 101,607 | 2,893,248 | 60 | 70 | 394,326 | 949,772 | 91,101,687 | 3.50 |
| 4/12/2014 | 65,970,648 | 1640 (\$2.N) - 4/9/14 | 2,990,194 | 23.25 | 24 | 427,127 | 4,964,333 | 96,168 | 1,028,028 | 895,914 | 200 | 225 | 1,948,201 | 15 | 20 | 500,655 | 1,605,874 | 98,173 | 2,999,826 | 80 | 94 | 401,909 | 919,084 | 84,846,133 | 3.26 |
| 4/19/2014 | 64,922,280 | 1633 (\$3.N) - 4/14/14 1632 (\$5.N) - 4/16/14 | 3,025,239 | 24.75 | 25.75 | 437,231 | 4,958,005 | 92,645 | 1,011,760 | 1,073,679 | 325 | 450 | 2,033,055 | 28 | 38 | 516,959 | 1,601,703 | 95,679 | 3,537,027 | 110 | 128 | 452,491 | 887,576 | 84,645,328 | 3.25 |
| 4/26/2014 | 60,578,829 | 1596 (\$2.N) - 4/22/14 | 3,023,690 | 26.75 | 27.5 | 442,889 | 4,890,971 | 91,628 | 990,768 | 857,660 | 200 | 225 | 2,091,990 | 48 | 59 | 524,193 | 1,598,483 | 101,126 | 3,087,053 | 150 | 40 | 405,658 | 872,040 | 79,556,977 | 3.05 |

Texas Lottery Commission - Weekly Sales Summary for FY 2014 (Unaudited)

| Week Ended | Instant Games | New Games & Dates | Lotto Texas | Jackpot W S | | Lotto Extra | Pick 3 | Pick 3 Sum It Up | Cash Five | Texas Two Step | Jackpot M TH | | Mega Millions | Jackpot T F | | Megaplier | Daily 4 | Daily 4 Sum It Up | Powerball | Jackpot W S | | Power Play | All or Nothing | Total | Per Cap. |
|--------------------------|---------------|--|--------------|----------------|-------|--------------|--------------|---------------------|--------------|----------------|-----------------|-------|---------------|----------------|-----|--------------|--------------|----------------------|--------------|----------------|-----|--------------|----------------|---------------|-------------------|
| 5/3/2014 | 64,244,545 | 1509 (\$2.N); 1635 (\$3.N); 1636 (\$5.N); 1629 (\$5.N); 1492 (\$50.N) - 4/28/14 1639 (\$1.N) - 5/2/14 | 3,014,087 | 28.5 | 29.5 | 435,461 | 5,077,172 | 96,387 | 1,012,930 | 1,080,028 | 300 | 425 | 2,288,913 | 68 | 81 | 557,995 | 1,670,055 | 103,492 | 2,445,330 | 50 | 60 | 346,002 | 901,780 | 83,274,177 | 3.20 |
| 5/10/2014 | 65,679,029 | 0 | 3,084,650 | 30.25 | 31.25 | 443,023 | 4,918,905 | 91,413 | 997,396 | 1,019,749 | 575 | 200 | 2,627,097 | 92 | 105 | 620,855 | 1,602,995 | 100,432 | 2,607,234 | 70 | 80 | 364,286 | 872,444 | 85,029,507 | 3.26 |
| 5/17/2014 | 63,627,971 | 0 | 3,031,915 | 32 | 33 | 438,379 | 4,939,410 | 91,531 | 987,112 | 929,622 | 225 | 300 | 2,961,458 | 121 | 136 | 671,254 | 1,598,861 | 100,866 | 2,874,286 | 90 | 100 | 388,838 | 852,078 | 83,493,580 | 3.20 |
| 5/24/2014 | 61,902,451 | 0 | 3,046,061 | 33.5 | 34.75 | 438,099 | 4,811,001 | 92,387 | 984,152 | 1,233,873 | 425 | 575 | 2,447,425 | 149 | 15 | 579,323 | 1,573,340 | 98,003 | 3,316,842 | 114 | 132 | 430,144 | 842,198 | 81,795,297 | 3.14 |
| 5/31/2014 | 61,264,953 | 1581 (\$1.N); 1526 (\$2.N); 1621 (\$20.N) - 5/27/14 | 3,060,434 | 35.75 | 36.25 | 441,137 | 4,755,554 | 93,682 | 971,978 | 1,576,080 | 750 | 925 | 1,754,318 | 20 | 26 | 449,059 | 1,609,835 | 104,556 | 3,898,106 | 152 | 173 | 488,193 | 811,704 | 81,279,589 | 3.12 |
| 6/7/2014 | 64,019,948 | 1628 (\$2.N) - 6/2/14 1641 (\$5.N) - 6/6/14 | 2,304,773 | 5 | 5.25 | 335,880 | 5,153,907 | 101,081 | 1,005,291 | 1,946,395 | 1,150 | 1,400 | 1,958,434 | 34 | 45 | 491,044 | 1,706,457 | 105,155 | 5,238,326 | 192 | 221 | 614,611 | 821,534 | 85,802,834 | 3.29 |
| 6/14/2014 | 59,742,598 | 1594 (\$1.N); 1604 (\$5.N) - 6/9/14 | 2,313,291 | 5.5 | 5.75 | 337,577 | 4,996,192 | 105,188 | 969,243 | 864,544 | 200 | 225 | 2,097,302 | 55 | 66 | 519,320 | 1,575,679 | 97,801 | 4,514,732 | 257 | 40 | 545,524 | 800,356 | 79,479,346 | 3.05 |
| 6/21/2014 | 59,010,863 | 0 | 2,267,120 | 6 | 6.25 | 331,927 | 4,833,500 | 110,287 | 968,542 | 1,111,405 | 300 | 450 | 1,726,321 | 15 | 20 | 445,076 | 1,512,466 | 93,886 | 2,546,032 | 50 | 60 | 353,483 | 795,292 | 76,106,199 | 2.92 |
| 6/28/2014 | 58,102,191 | 1522 (\$2.N); 1605 (\$2.N); 1599 (\$5.N); 1552 (\$10.N) - 6/23/14 | 2,270,573 | 6.5 | 6.75 | 334,231 | 4,769,467 | 107,619 | 959,228 | 1,465,555 | 600 | 775 | 1,785,377 | 25 | 33 | 458,307 | 1,486,906 | 89,032 | 2,759,703 | 70 | 80 | 375,911 | 773,828 | 75,737,927 | 2.91 |
| weekly change | -1.5% | | 0.2% | | | 0.7% | -1.3% | -2.4% | -1.0% | 31.9% | | | 3.4% | | | 3.0% | -1.7% | -5.2% | 8.4% | | | 6.3% | -2.7% | -0.5% | |
| SALES | | | SALES | | | SALES | SALES | SALES | SALES | SALES | | | SALES | | | SALES | SALES | SALES | SALES | | | SALES | SALES | SALES | % of Sales |
| Calendar Year to date | 1,674,623,920 | | 69,536,623 | | | 9,835,598 | 127,021,881 | 2,526,901 | 26,033,042 | 28,317,166 | | | 74,028,177 | | | 17,245,723 | 41,530,099 | 2,580,931 | 100,184,158 | | | 12,365,308 | 23,686,451 | 2,209,515,977 | 100.0% |
| Fiscal Year to date 2014 | 2,734,750,814 | | 113,885,966 | | | 15,534,245 | 210,710,379 | 4,179,375 | 43,649,383 | 47,335,575 | | | 162,366,558 | | | 35,132,715 | 69,088,449 | 4,272,618 | 173,563,893 | | | 21,007,364 | 39,161,263 | 3,674,638,597 | 100.0% |