



WEEKLY SALES SUMMARY

Unaudited

Week Ending: 7/16/2016

Texas Lottery Commission
Fiscal Year to Date Sales Comparison
Unaudited

Through the Week Ending 7/16/2016 (46 Weeks)

Sales by Game	FY 2014 *	FY 2015 **	FY 2016	\$ Change		% Change	
				FY 2016 to FY 2014	FY 2016 to FY 2015	FY 2016 to FY 2014	FY 2016 to FY 2015
Scratch Tickets	\$ 2,913,248,594	\$ 3,086,700,149	\$ 3,271,940,756	\$ 358,692,162	\$ 185,240,607	12.3%	6.0%
Lotto Texas	121,024,148	107,484,671	106,918,935	-14,105,213	-565,736	-11.7%	-0.5%
Lotto Extra	16,581,255	16,960,209	19,004,620	2,423,365	2,044,411	14.6%	12.1%
Pick 3	225,461,546	223,209,286	224,991,535	-470,011	1,782,249	-0.2%	0.8%
Pick 3 Sum It Up	4,485,232	4,588,587	4,620,607	135,375	32,020	3.0%	0.7%
Cash Five	46,588,275	44,479,524	40,560,254	-6,028,021	-3,919,270	-12.9%	-8.8%
Texas Two Step	50,847,387	47,818,583	47,189,547	-3,657,840	-629,036	-7.2%	-1.3%
Mega Millions	167,788,184	136,090,951	142,736,565	-25,051,619	6,645,614	-14.9%	4.9%
Megaplier	36,509,903	31,992,226	35,503,603	-1,006,300	3,511,377	-2.8%	11.0%
Daily 4	73,736,285	76,763,076	79,453,115	5,716,830	2,690,039	7.8%	3.5%
Daily 4 Sum It Up	4,556,805	4,441,057	4,250,053	-306,752	-191,004	-6.7%	-4.3%
Powerball	182,555,859	184,382,846	413,902,979	231,347,120	229,520,133	126.7%	124.5%
Power Play	22,213,197	23,384,444	47,455,377	25,242,180	24,070,933	113.6%	102.9%
All or Nothing	41,576,656	33,692,444	26,953,708	-14,622,948	-6,738,736	-35.2%	-20.0%
Monopoly	- ¹	2,656,310	-	-	-2,656,310	-	-100.0%
Texas Triple Chance	-	-	21,209,732	21,209,732	21,209,732	-	-
Total	\$ 3,907,173,324	\$ 4,024,644,362	\$ 4,486,691,385	\$ 579,518,061	\$ 462,047,023	14.8%	11.5%

* 2 extra days

** 1 extra day

¹ Monopoly sales were suspended after draw on 12/12/14

Texas Lottery Commission
 Fiscal Year to Date Cumulative Average Sales Comparison
 Unaudited

Through the Week Ending 7/16/2016 (46 Weeks)

Sales by Game	FY 2014	FY 2015	FY 2016
Scratch Tickets	\$ 9,047,356	\$ 9,615,888	\$ 10,224,815
Lotto Texas	375,851	334,843	334,122
Lotto Extra	51,495	52,836	59,389
Pick 3	700,191	695,356	703,099
Pick 3 Sum It Up	13,929	14,295	14,439
Cash Five	144,684	138,565	126,751
Texas Two Step	157,911	148,968	147,467
Mega Millions	521,081	423,959	446,052
Megaplier	113,385	99,664	110,949
Daily 4	228,995	239,137	248,291
Daily 4 Sum It Up	14,152	13,835	13,281
Powerball	566,944	574,401	1,293,447
Power Play	68,985	72,849	148,298
All or Nothing	129,120	104,961	84,230
Monopoly	- **	48,297	-
Texas Triple Chance	-	- *	72,142
Total	\$ <u>12,134,079</u>	\$ <u>12,577,854</u>	\$ <u>14,026,772</u>

thru 7/19/2014
322 days

**

thru 7/18/2015
321 days
55 days

*

thru 7/16/2016
320 days
294 days

Texas Lottery Commission
Fiscal Year Over Year Change in Sales
Unaudited
FY 2016 Compared to FY 2015

			SCRATCH TICKETS				DRAW GAMES				TOTAL SALES			
FY 2016			% change -				% change -				% change -			
Week	Week	Ending	FY 2016	FY 2015	Difference	Cumulative Sales	FY 2016	FY 2015	Difference	Cumulative Sales	FY 2016	FY 2015	Difference	Cumulative Sales
1	9/5/2015 *		\$49,534,249	\$54,911,801	(\$5,377,552)	-9.8%	\$17,091,724	\$17,482,488	(\$390,765)	-2.2%	\$66,625,973	\$72,394,289	(\$5,768,317)	-8.0%
2	9/12/2015		\$61,566,291	\$61,436,533	\$129,758	0.2%	\$20,630,922	\$19,097,081	\$1,533,841	8.0%	\$82,197,213	\$80,533,614	\$1,663,599	2.1%
3	9/19/2015		\$63,530,657	\$60,959,234	\$2,571,423	4.2%	\$20,327,253	\$20,567,894	(\$240,641)	-1.2%	\$83,857,910	\$81,527,128	\$2,330,782	2.9%
4	9/26/2015		\$61,731,400	\$59,710,056	\$2,021,344	3.4%	\$22,252,290	\$19,920,828	\$2,331,462	11.7%	\$83,983,690	\$79,630,884	\$4,352,806	5.5%
5	10/3/2015		\$67,048,415	\$62,119,854	\$4,928,561	7.9%	\$25,436,791	\$18,531,421	\$6,905,370	37.3%	\$92,485,206	\$80,651,275	\$11,833,931	14.7%
6	10/10/2015		\$66,049,706	\$61,253,665	\$4,796,041	7.8%	\$18,138,977	\$18,985,332	(\$846,355)	-4.5%	\$84,188,683	\$80,238,997	\$3,949,687	4.9%
7	10/17/2015		\$65,073,593	\$60,230,048	\$4,843,545	8.0%	\$17,776,414	\$19,538,402	(\$1,761,988)	-9.0%	\$82,850,007	\$79,768,450	\$3,081,558	3.9%
8	10/24/2015		\$64,087,437	\$62,384,112	\$1,703,325	2.7%	\$18,450,464	\$21,475,643	(\$3,025,179)	-14.1%	\$82,537,901	\$83,859,755	(\$1,321,854)	-1.6%
9	10/31/2015		\$66,025,374	\$63,404,713	\$2,620,661	4.1%	\$19,568,150	\$23,568,817	(\$4,000,668)	-17.0%	\$85,593,524	\$86,973,530	(\$1,380,007)	-1.6%
10	11/7/2015		\$68,137,192	\$65,486,719	\$2,650,473	4.0%	\$20,398,351	\$23,749,032	(\$3,350,681)	-14.1%	\$88,535,543	\$89,235,751	(\$700,208)	-0.8%
11	11/14/2015		\$65,449,428	\$61,745,521	\$3,703,907	6.0%	\$20,169,382	\$17,449,604	\$2,719,779	15.6%	\$85,618,810	\$79,195,125	\$6,423,686	8.1%
12	11/21/2015		\$68,364,421	\$66,353,583	\$2,010,838	3.0%	\$17,174,606	\$17,108,084	\$66,522	0.4%	\$85,539,027	\$83,461,667	\$2,077,360	2.5%
13	11/28/2015		\$61,091,628	\$60,471,184	\$620,444	1.0%	\$17,168,993	\$17,303,129	(\$134,136)	-0.8%	\$78,260,621	\$77,774,313	\$486,309	0.6%
14	12/5/2015		\$67,830,827	\$66,648,696	\$1,182,131	1.8%	\$19,252,418	\$18,862,425	\$389,994	2.1%	\$87,083,245	\$85,511,121	\$1,572,125	1.8%
15	12/12/2015		\$68,324,452	\$65,708,630	\$2,615,822	4.0%	\$19,529,408	\$18,649,598	\$879,811	4.7%	\$87,853,860	\$84,358,228	\$3,495,633	4.1%
16	12/19/2015		\$71,041,258	\$68,551,298	\$2,489,960	3.6%	\$20,824,840	\$19,051,100	\$1,773,740	9.3%	\$91,866,098	\$87,602,398	\$4,263,700	4.9%
17	12/26/2015		\$78,125,965	\$73,858,618	\$4,267,347	5.8%	\$22,586,417	\$20,006,357	\$2,580,061	12.9%	\$100,712,382	\$93,864,975	\$6,847,408	7.3%
18	1/2/2016		\$76,712,975	\$67,733,268	\$8,979,707	13.3%	\$27,972,880	\$21,355,167	\$6,617,714	31.0%	\$104,685,855	\$89,088,435	\$15,597,421	17.5%
19	1/9/2016		\$77,136,541	\$64,745,641	\$12,390,900	19.1%	\$127,289,478	\$22,265,347	\$105,024,131	471.7%	\$204,426,019	\$87,010,988	\$117,415,031	134.9%
20	1/16/2016		\$73,858,865	\$64,015,166	\$9,843,699	15.4%	\$140,104,126	\$23,694,617	\$116,409,509	491.3%	\$213,962,991	\$87,709,783	\$126,253,208	143.9%
21	1/23/2016		\$70,665,700	\$62,569,156	\$8,096,544	12.9%	\$20,781,745	\$19,765,442	\$1,016,303	5.1%	\$91,447,445	\$82,334,598	\$9,112,847	11.1%
22	1/30/2016		\$71,051,685	\$68,001,588	\$3,050,097	4.5%	\$20,433,401	\$22,877,000	(\$2,443,600)	-10.7%	\$91,485,086	\$90,878,588	\$606,498	0.7%
23	2/6/2016		\$78,458,428	\$75,677,650	\$2,780,778	3.7%	\$21,274,800	\$31,662,209	(\$10,387,409)	-32.8%	\$99,733,228	\$107,339,859	(\$7,606,631)	-7.1%
24	2/13/2016		\$80,754,850	\$75,368,712	\$5,386,138	7.1%	\$21,391,919	\$46,091,747	(\$24,699,828)	-53.6%	\$102,146,769	\$121,460,459	(\$19,313,690)	-15.9%
25	2/20/2016		\$80,078,271	\$74,833,076	\$5,245,195	7.0%	\$21,911,382	\$19,865,172	\$2,046,211	10.3%	\$101,989,653	\$94,698,248	\$7,291,406	7.7%
26	2/27/2016		\$78,832,217	\$69,918,013	\$8,914,204	12.7%	\$22,823,086	\$19,735,352	\$3,087,734	15.6%	\$101,655,303	\$89,653,365	\$12,001,938	13.4%
27	3/5/2016		\$80,019,524	\$74,848,961	\$5,170,563	6.9%	\$23,146,906	\$19,946,068	\$3,200,838	16.0%	\$103,166,430	\$94,795,029	\$8,371,401	8.8%
28	3/12/2016		\$78,524,214	\$70,079,409	\$8,444,805	12.1%	\$19,311,625	\$20,044,562	(\$732,937)	-3.7%	\$97,835,839	\$90,123,971	\$7,711,868	8.6%
29	3/19/2016		\$75,446,960	\$70,368,686	\$5,078,274	7.2%	\$18,001,000	\$18,480,795	(\$479,795)	-2.6%	\$93,447,960	\$88,849,481	\$4,598,479	5.2%
30	3/26/2016		\$75,293,759	\$70,280,600	\$5,013,159	7.1%	\$18,553,964	\$17,595,205	\$958,760	5.4%	\$93,847,723	\$87,875,805	\$5,971,919	6.8%
31	4/2/2016		\$79,316,221	\$74,369,952	\$4,946,269	6.7%	\$19,482,563	\$18,378,917	\$1,103,646	6.0%	\$98,798,784	\$92,748,869	\$6,049,915	6.5%
32	4/9/2016		\$74,560,898	\$67,416,817	\$7,144,081	10.6%	\$20,100,629	\$18,594,844	\$1,505,785	8.1%	\$94,661,527	\$86,011,661	\$8,649,866	10.1%
33	4/16/2016		\$74,056,586	\$68,393,316	\$5,663,270	8.3%	\$20,677,413	\$18,104,632	\$2,572,781	14.2%	\$94,733,999	\$86,497,948	\$8,236,051	9.5%
34	4/23/2016		\$73,110,080	\$70,078,182	\$3,031,898	4.3%	\$20,313,339	\$17,957,150	\$2,356,189	13.1%	\$93,423,419	\$88,035,332	\$5,388,087	6.1%
35	4/30/2016		\$73,448,019	\$71,744,718	\$1,703,301	2.4%	\$22,666,626	\$18,961,113	\$3,705,513	19.5%	\$96,114,645	\$90,705,831	\$5,408,814	6.0%
36	5/7/2016		\$77,593,399	\$73,415,978	\$4,177,421	5.7%	\$33,262,968	\$20,210,341	\$13,052,628	64.6%	\$110,856,367	\$93,626,319	\$17,230,049	18.4%
37	5/14/2016		\$75,263,676	\$72,152,109	\$3,111,567	4.3%	\$20,250,149	\$20,362,774	(\$112,626)	-0.6%	\$95,513,825	\$92,514,883	\$2,998,942	3.2%
38	5/21/2016		\$74,274,808	\$70,399,950	\$3,874,858	5.5%	\$19,605,983	\$21,246,276	(\$1,640,294)	-7.7%	\$93,880,791	\$91,646,226	\$2,234,565	2.4%
39	5/28/2016		\$71,562,728	\$68,547,554	\$3,015,174	4.4%	\$20,150,232	\$22,227,946	(\$2,077,714)	-9.3%	\$91,712,960	\$90,775,500	\$937,460	1.0%
40	6/4/2016		\$73,085,109	\$71,254,006	\$1,831,103	2.6%	\$21,067,550	\$20,739,703	\$327,847	1.6%	\$94,152,659	\$91,993,709	\$2,158,950	2.3%
41	6/11/2016		\$70,593,768	\$65,878,375	\$4,715,393	7.2%	\$21,389,794	\$17,216,403	\$4,173,391	24.2%	\$91,983,562	\$83,094,778	\$8,888,784	10.7%
42	6/18/2016		\$69,501,864	\$66,658,742	\$2,843,122	4.3%	\$22,402,713	\$17,340,531	\$5,062,183	29.2%	\$91,904,577	\$83,999,273	\$7,905,305	9.4%

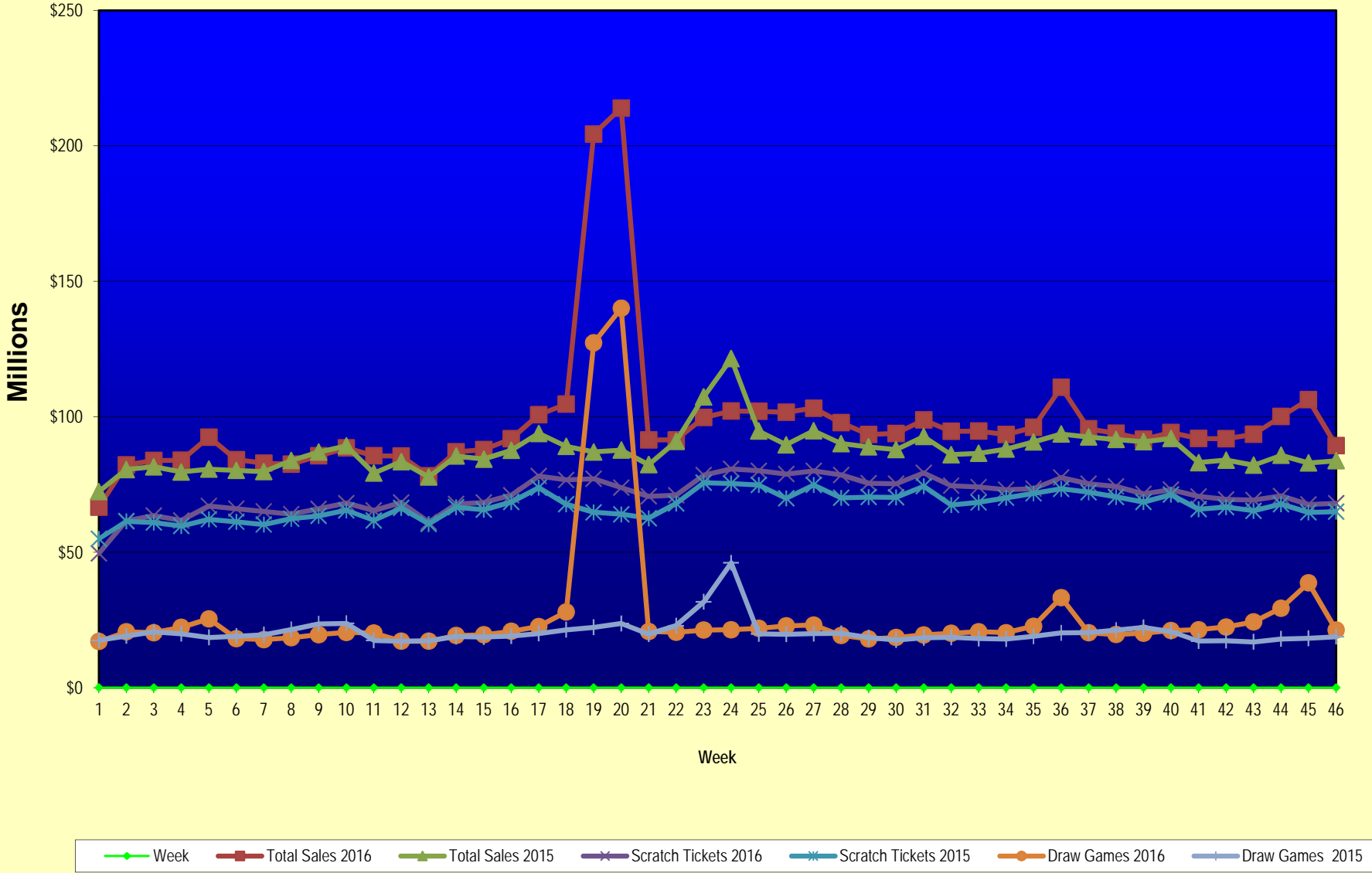
Texas Lottery Commission
Fiscal Year Over Year Change in Sales
Unaudited
FY 2016 Compared to FY 2015

			SCRATCH TICKETS				DRAW GAMES				TOTAL SALES			
FY 2016			FY 2016	FY 2015	Difference	% change - Cumulative Sales	FY 2016	FY 2015	Difference	% change - Cumulative Sales	FY 2016	FY 2015	Difference	% change - Cumulative Sales
Week	Week	Ending												
43	6/25/2016		\$69,243,660	\$65,282,276	\$3,961,384	6.1%	\$24,290,311	\$16,873,368	\$7,416,943	44.0%	\$93,533,971	\$82,155,644	\$11,378,327	13.8%
44	7/2/2016		\$70,782,313	\$67,757,752	\$3,024,561	4.5%	\$29,331,406	\$18,007,540	\$11,323,866	62.9%	\$100,113,719	\$85,765,292	\$14,348,427	16.7%
45	7/9/2016		\$67,636,625	\$64,718,254	\$2,918,371	4.5%	\$38,673,314	\$18,203,985	\$20,469,329	112.4%	\$106,309,939	\$82,922,239	\$23,387,700	28.2%
46	7/16/2016		\$68,064,720	\$64,957,977	\$3,106,743	4.8%	\$21,311,938	\$18,792,785	\$2,519,153	13.4%	\$89,376,658	\$83,750,762	\$5,625,896	6.7%
47	7/23/2016			\$62,541,241				\$18,229,965				\$80,771,206		
48	7/30/2016			\$66,468,460				\$17,742,489				\$84,210,949		
49	8/6/2016			\$62,412,598				\$17,331,374				\$79,743,972		
50	8/13/2016			\$62,089,389				\$17,501,599				\$79,590,988		
51	8/20/2016			\$62,437,148				\$17,779,458				\$80,216,606		
52	8/27/2016			\$61,403,206				\$18,529,560				\$79,932,766		
	8/31/2016 **			\$17,309,621				\$3,279,958				\$20,589,579		
Total thru Current Week			\$3,271,940,756	\$3,086,700,149	\$185,240,607	6.0%	\$1,214,750,629	\$937,944,213	\$276,806,416	29.5%	\$4,486,691,385	\$4,024,644,362	\$462,047,023	11.5%
Fiscal Year Total			\$3,271,940,756	\$3,481,361,812			\$1,214,750,629	\$1,048,338,613			\$4,486,691,385	\$4,529,700,425		

* FY 16 includes 5 days; FY 15 includes 6 days

** FY 16 includes 4 days; FY 15 includes 2 days

Texas Lottery Commission Fiscal Year Over Year Change in Sales



Note: Week 1 is not a full week of sales as this report is prepared on a Fiscal Year basis.

Texas Lottery Commission
Scratch Tickets by Price Point
Sales, Prize Expense, Sales Contribution and Payout Percentage With Year Over Year Changes
Unaudited

Fiscal Year	Price Point	# of Active Games	FY Sales	% of Scratch Ticket Sales	Year over Year Change in Sales	FY Prize Expense	Year over Year Change in Prize Expense	FY Sales Contribution	Year over Year Change in Contribution	Average Prize Payout %	Year over Year Change in Payout %
2015	\$1.00	23	147,284,431	4.8%		89,220,694		58,063,737		60.6%	1.1%
Through	\$2.00	35	310,586,990	10.1%		203,662,077		106,924,913		65.6%	1.1%
7/18/2015	\$3.00	15	311,766,063	10.1%		205,529,690		106,236,373		65.9%	0.5%
	\$5.00	52	941,420,555	30.5%		639,598,269		301,822,286		67.9%	0.0%
	\$10.00	18	654,163,980	21.2%		459,785,642		194,378,338		70.3%	0.0%
	\$20.00	11	565,076,180	18.3%		423,674,050		141,402,130		75.0%	0.1%
	\$50.00	4	156,401,950	5.1%		121,583,755		34,818,195		77.7%	0.1%
Total		158	\$3,086,700,149			\$2,143,054,177		\$943,645,972		69.4%	0.7%
2016	\$1.00	21	143,484,241	4.4%		86,462,873		57,021,368		60.3%	-0.4%
thru	\$2.00	34	319,855,708	9.8%		208,546,733		111,308,976		65.2%	-0.5%
7/16/2016	\$3.00	15	245,445,762	7.5%		161,703,174		83,742,588		65.9%	-0.1%
	\$5.00	58	1,078,143,955	33.0%		732,492,042		345,651,913		67.9%	0.0%
	\$10.00	19	652,274,900	19.9%		457,194,513		195,080,387		70.1%	-0.3%
	\$20.00	13	666,850,040	20.4%		499,746,354		167,103,686		74.9%	0.0%
	\$50.00	4	165,886,150	5.1%		129,039,328		36,846,822		77.8%	0.1%
Total		164	\$3,271,940,756			\$2,275,185,017		\$996,755,739		69.5%	0.1%
Variance	\$1.00	-2	-3,800,190		-2.6%	-2,757,821	-3.1%	-1,042,369	-1.8%	-0.32%	
2016 to	\$2.00	-1	9,268,718		3.0%	4,884,656	2.4%	4,384,062	4.1%	-0.37%	
2015	\$3.00	0	-66,320,301		-21.3%	-43,826,516	-21.3%	-22,493,785	-21.2%	-0.04%	
	\$5.00	6	136,723,400		14.5%	92,893,773	14.5%	43,829,627	14.5%	0.00%	
	\$10.00	1	-1,889,080		-0.3%	-2,591,129	-0.6%	702,049	0.4%	-0.19%	
	\$20.00	2	101,773,860		18.0%	76,072,304	18.0%	25,701,556	18.2%	-0.04%	
	\$50.00	0	9,484,200		6.1%	7,455,573	6.1%	2,028,627	5.8%	0.05%	
Total		6	\$185,240,607		6.0%	\$132,130,840	6.2%	\$53,109,767	5.6%	0.11%	

Notes - Scratch Ticket Variances

Texas Lottery Commission
Scratch Tickets by Price Point
Sales, Prize Expense, Sales Contribution and Payout Percentage With Year Over Year Changes
Unaudited

		FY 2016		FY 2015		Difference
Sales	\$1 - \$5	\$1,786,929,666	\$1,711,058,039			\$75,871,627
Prize Exp.	\$1 - \$5	\$1,189,204,821	\$1,138,010,730			\$51,194,091
Sales Cont.	\$1 - \$5	\$597,724,845	\$573,047,309			\$24,677,536
Prize Exp. %	\$1 - \$5	66.6%	66.5%			0.0%
		FY 2016		FY 2015		Difference
Sales	\$10 - \$50	\$1,485,011,090	\$1,375,642,110			\$109,368,980
Prize Exp.	\$10 - \$50	\$1,085,980,196	\$1,005,043,447			\$80,936,749
Sales Cont.	\$10 - \$50	\$399,030,894	\$370,598,663			\$28,432,231
Prize Exp. %	\$10 - \$50	73.1%	73.1%			0.1%
		FY 2016		FY 2015		Difference
Sales	Scratch	\$3,271,940,756	\$3,086,700,149			\$185,240,607
Prize Exp.	Scratch	\$2,275,185,017	\$2,143,054,177			\$132,130,840
Sales Cont.	Scratch	\$996,755,739	\$943,645,972			\$53,109,767
Prize Exp. %	Scratch	69.5%	69.4%			0.1%

		FY 2016		FY 2015		Difference
Sales	\$1 - \$10	\$2,439,204,566	\$2,365,222,019			\$73,982,547
Prize Exp.	\$1 - \$10	\$1,646,399,334	\$1,597,796,372			\$48,602,962
Sales Cont.	\$1 - \$10	\$792,805,232	\$767,425,647			\$25,379,585
Prize Exp. %	\$1 - \$10	67.5%	67.6%			-0.1%
		FY 2016		FY 2015		Difference
Sales	\$20 - \$50	\$832,736,190	\$721,478,130			\$111,258,060
Prize Exp.	\$20 - \$50	\$628,785,683	\$545,257,805			\$83,527,877
Sales Cont.	\$20 - \$50	\$203,950,507	\$176,220,325			\$27,730,183
Prize Exp. %	\$20 - \$50	75.5%	75.6%			-0.1%
		FY 2016		FY 2015		Difference
Sales	Scratch	\$3,271,940,756	\$3,086,700,149			\$185,240,607
Prize Exp.	Scratch	\$2,275,185,017	\$2,143,054,177			\$132,130,840
Sales Cont.	Scratch	\$996,755,739	\$943,645,972			\$53,109,767
Prize Exp. %	Scratch	69.5%	69.4%			0.1%

Texas Lottery Commission
 Weekly Sales Summary
 & Comparison to Previous Week
 Unaudited

	Week Ending 7/16/2016		Week Ending 7/09/2016			
	<u>THIS WEEK</u>	% of Sales	<u>LAST WEEK</u>	% of Sales	<u>\$ change</u>	<u>% change</u>
Total Sales	<u>\$89,376,658</u>		<u>\$106,309,939</u>		<u>-\$16,933,281</u>	-15.93%
Scratch Tickets	<u>\$68,064,720</u>	76.2%	<u>\$67,636,625</u>	63.6%	<u>\$428,095</u>	0.63%
Lotto	\$1,993,580	2.2%	\$2,135,139	2.0%	-\$141,559	-6.63%
Lotto Extra	\$380,884	0.4%	\$410,294	0.4%	-\$29,410	-7.17%
Pick 3	\$4,660,054	5.2%	\$4,653,385	4.4%	\$6,669	0.14%
Pick 3 Sum It Up	\$91,288	0.1%	\$95,381	0.1%	-\$4,094	-4.29%
Cash Five	\$835,104	0.9%	\$826,639	0.8%	\$8,465	1.02%
Texas Two Step	\$837,939	0.9%	\$816,979	0.8%	\$20,960	2.57%
Mega Millions	\$2,116,570	2.4%	\$15,973,862	15.0%	-\$13,857,292	-86.75%
Megaplier	\$593,562	0.7%	\$3,658,732	3.4%	-\$3,065,170	-83.78%
Daily 4	\$1,616,795	1.8%	\$1,631,605	1.5%	-\$14,810	-0.91%
Daily 4 Sum It Up	\$87,798	0.1%	\$92,411	0.1%	-\$4,613	-4.99%
Powerball	\$6,389,154	7.1%	\$6,658,992	6.3%	-\$269,838	-4.05%
Power Play	\$870,953	1.0%	\$906,338	0.9%	-\$35,385	-3.90%
All or Nothing	\$527,068	0.6%	\$509,290	0.5%	\$17,778	3.49%
Texas Triple Chance	\$311,190	0.3%	\$304,268	0.3%	\$6,922	2.27%
Total Draw Game Sales	<u>\$21,311,938</u>		<u>\$38,673,314</u>		<u>-\$17,361,376</u>	-44.89%

* Totals may not sum due to rounding.

Texas Lottery Commission
Weekly Sales Summary
Unaudited

SCRATCH TICKETS
TOP TEN SELLING GAMES

For the week ending: 7/16/2016

Rank	Price Point	Game	Sales (Millions)
1	\$ 20	100X THE CASH	\$ 3.956
2	\$ 20	MILLIONAIRE'S CLUB	\$ 3.632
3	\$ 10	\$250,000 EXTREME GREEN	\$ 3.496
4	\$ 5	SUPER LOTERIA	\$ 3.263
5	\$ 10	CASHWORD MULTIPLIER	\$ 2.978
6	\$ 50	HIGH ROLLER CASINO ACTION	\$ 2.763
7	\$ 5	LUCKY NUMBERS	\$ 2.631
8	\$ 20	HIT \$1,000,000	\$ 2.613
9	\$ 10	\$250,000 CASH CRAZE	\$ 2.586
10	\$ 10	THE BIG MONEY SUPER TICKET	\$ 2.507

Texas Lottery Commission
Prize Payout Tracking Report
Unaudited

Through the week ending: 7/16/2016

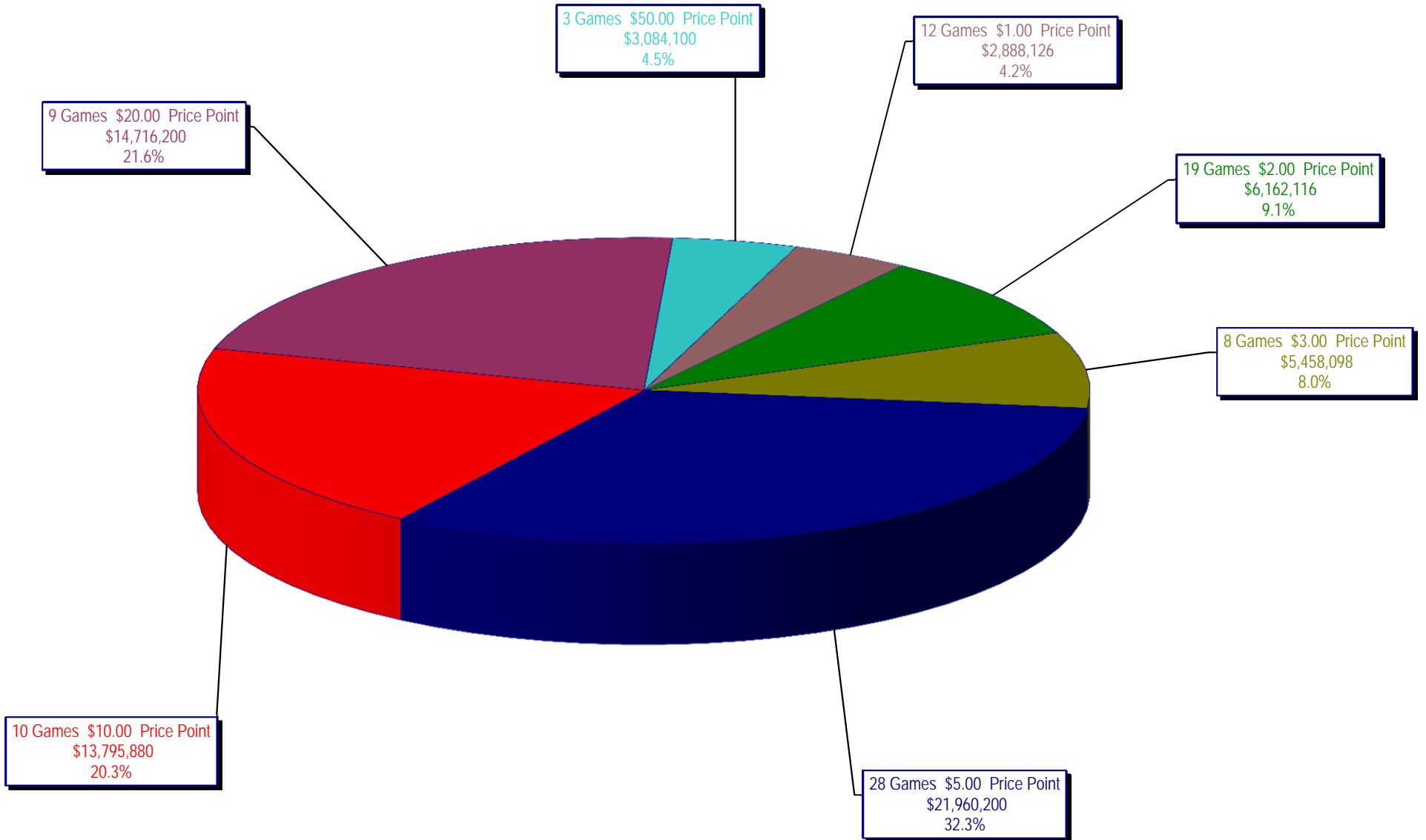
Draw Game Sales

	FY Sales Through Week Ending 7/16/2016	FY Prize Expense Through Week Ending 7/16/2016	Actual* Prize Payout	Base Payout (Prize Pool)
Lotto	\$ 106,918,935	\$ 61,949,008	57.94%	50.00%
Lotto Extra	19,004,620	10,110,302	53.20%	53.70%
Pick 3	224,991,535	111,598,000	49.60%	50.00%
Pick 3 Sum It Up	4,620,607	2,258,766	48.88%	50.00%
Cash Five	40,560,254	20,280,167	50.00%	50.00%
Texas Two Step	47,189,547	23,999,814	50.86%	50.00%
Mega Millions	142,736,565	72,952,047	51.11%	50.00%**
Megaplier	35,503,603	17,782,135	50.09%	N/A
Daily 4	79,453,115	37,407,600	47.08%	50.00%
Daily 4 Sum It Up	4,250,053	1,932,034	45.46%	50.00%
Powerball	413,902,979	207,151,785	50.05%	50.00%**
Power Play	47,455,377	23,753,691	50.05%	N/A
All or Nothing	26,953,708	14,289,306	53.01%	55.98%
Monopoly	0	(22,993)	0.00%	50.00%
Texas Triple Chance	21,209,732	12,763,525	60.18%	54.42%
Totals	\$ 1,214,750,629	\$ 618,205,185	50.89%	

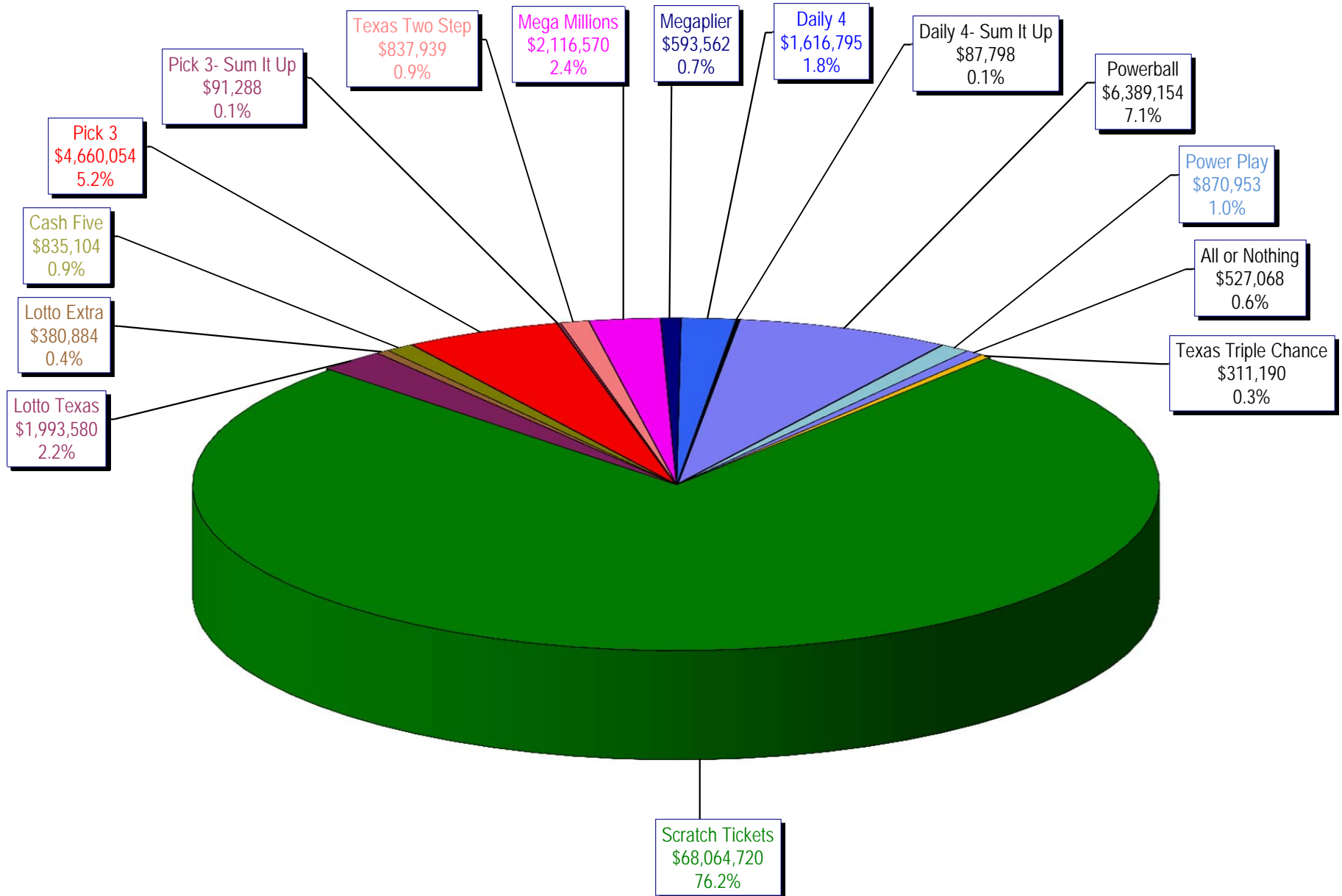
* Before Unclaimed Prizes

** Estimated; depends on # of guaranteed prizes won in Texas

Texas Lottery Commission
Scratch Ticket Sales
For the week ending 7/16/16
(Unaudited)



Texas Lottery Commission
All Game Sales
For the week ending 7/16/16
(Unaudited)



Texas Lottery Commission - Weekly Sales Summary for FY 2016 (Unaudited)

Week Ended	Scratch Tickets	New Games & Dates	Lotto Texas	Jackpot		Lotto Extra	Pick 3	Pick 3 Sum It Up	Cash Five	Texas Two Step	Jackpot		Mega Millions	Jackpot		MegaMillier	Daily 4	Daily 4 Sum It Up	Powerball	Jackpot		Power Play	All or Nothing	Texas Triple Chance	Total	Per Cap.
				W	S						M	TH		T	F					W	S					
9/5/2015*	66,843,870	0	2,788,509	25	26	466,121	5,249,348	117,979	956,126	1,253,100	425	575	2,366,640	74	85	608,901	1,725,027	93,067	3,586,482	120	133	484,769	675,614		87,215,551	3.24
9/12/2015	61,566,291	1717 (\$1.N); 1718 (\$5.N); 1748 (\$10.N); 1696 (\$3.N) - 9/08/15	2,793,428	26.5	27.75	465,451	4,974,238	103,203	919,536	1,423,604	725	950	2,511,039	95	106	629,091	1,641,226	86,539	3,927,126	149	167	518,060	638,384		82,197,213	3.05
9/19/2015	63,530,657	0	2,845,557	28.25	29.5	475,307	4,715,566	95,242	928,275	854,109	200	225	1,817,155	15	20	487,946	1,647,829	81,483	5,082,782	185	208	639,614	656,388		83,857,910	3.11
9/26/2015	61,731,400	1720 (\$2.N); 1721 (\$5.N); 1715 (\$5.N) - 9/21/15	2,815,638	30	30.75	468,584	4,735,629	97,118	924,334	1,048,752	300	450	1,860,438	25	31	499,201	1,628,350	82,200	6,648,092	235	267	790,427	653,528		83,983,690	3.12
10/3/2015	67,048,415	0	3,034,763	31.5	32.25	502,043	4,925,789	100,522	919,217	1,347,552	600	725	2,053,673	39	47	539,290	1,662,320	88,291	8,036,576	301	40	884,785	616,594	725,376	92,485,206	3.43
10/10/2015	66,049,706	1722 (\$1.N); 1723 (\$5.N); 1711 (\$20.N) - 10/05/15	2,175,801	5	5.25	366,506	4,803,855	97,005	899,614	1,141,865	925	200	2,113,720	55	65	535,411	1,636,542	86,150	2,572,748	50	60	372,480	593,616	743,664	84,188,683	3.12
10/17/2015	65,073,593	0	2,133,286	5	5	358,076	4,629,752	92,453	876,040	824,622	200	225	2,286,703	75	84	568,477	1,576,323	79,576	2,638,956	70	80	377,157	580,870	754,124	82,850,007	3.07
10/24/2015	64,087,437	1724 (\$2.N); 1768 (\$5.N); 1726 (\$10.N) - 10/19/15	2,099,176	5.25	5.5	358,217	4,515,381	92,071	860,960	991,931	300	425	2,600,946	93	105	626,019	1,553,788	80,225	2,946,077	90	100	411,192	562,378	752,104	82,537,901	3.06
10/31/2015	66,025,374	0	2,165,101	5.75	6	368,559	4,653,961	91,360	873,751	944,275	550	200	2,945,749	117	129	695,705	1,621,009	85,560	3,327,954	110	127	455,266	573,258	766,642	85,593,524	3.18
11/7/2015	68,137,192	1727 (\$1.N); 1728 (\$2.N); 1729 (\$5.N) - 11/02/15	2,232,267	6.25	6.5	379,508	4,977,693	96,887	891,111	911,796	225	300	3,416,380	144	164	795,028	1,688,298	86,418	3,071,581	142	40	425,312	599,980	826,093	88,535,543	3.28
11/14/2015	65,449,428	0	2,185,621	6.75	7	373,102	4,726,211	93,030	870,215	1,087,101	425	575	4,139,462	180	200	938,757	1,614,727	82,536	2,437,413	50	60	357,760	574,596	688,852	85,618,810	3.18
11/21/2015	68,364,421	1730 (\$2.N); 1783 (\$2.N); 1731 (\$5.N) - 11/16/15 1778 (\$2.N) - 11/18/15	2,173,857	7.25	7.5	369,519	4,674,293	88,988	862,630	825,054	200	225	1,830,909	15	20	489,485	1,632,096	82,077	2,553,907	70	80	370,594	586,348	634,850	85,539,027	3.17
11/28/2015	61,091,628	0	2,113,171	7.75	8.25	364,947	4,523,108	87,438	825,047	904,825	300	400	1,785,419	25	31	478,828	1,591,416	82,363	2,886,666	90	100	406,251	546,614	572,902	78,260,621	2.90
12/5/2015	67,830,827	1733 (\$5.N) - 12/5/15	2,245,481	8.75	9.5	385,346	5,020,926	94,445	898,598	957,116	525	200	2,073,099	39	47	545,451	1,789,318	94,198	3,432,248	110	127	467,917	603,222	645,054	87,083,245	3.23
12/12/2015	68,324,452	1751 (\$1.N); 1780 (\$2.N); 1784 (\$5.N) - 12/07/15	2,281,004	10.25	10.75	391,281	4,980,397	94,549	877,611	815,777	225	200	2,160,601	57	66	555,974	1,746,314	86,684	3,835,044	145	164	508,111	592,212	603,850	87,853,860	3.26
12/19/2015	71,041,258	0	2,326,771	11.5	12.25	400,223	4,980,685	95,154	879,423	888,674	225	300	2,322,855	74	85	592,792	1,796,682	92,401	4,707,013	180	202	600,420	573,754	567,994	91,866,098	3.41
12/26/2015	78,125,965	1736 (\$5.N); 1740 (\$20.N) - 12/21/15 1789 (\$3.N) - 12/22/15	2,422,285	12.75	13.5	417,003	4,863,405	91,522	860,361	1,106,519	400	550	2,624,875	94	104	637,157	1,725,445	87,146	5,941,638	227	255	728,720	548,978	531,364	100,712,382	3.74
1/2/2016	76,712,975	0	2,598,993	14.25	15.25	446,634	4,857,347	95,570	883,605	857,640	200	225	3,175,442	117	130	756,602	1,731,866	91,457	10,213,886	300	334	1,168,791	559,472	535,576	104,685,855	3.88
1/9/2016	77,136,541	1738 (\$1.N); 1735 (\$2.N); 1737 (\$10.N) - 1/04/16	3,569,884	16	17	580,778	4,782,398	102,725	899,480	1,029,458	300	425	4,896,815	145	165	1,100,345	1,668,434	91,670	98,440,136	500	900	8,915,982	589,972	621,402	204,426,019	7.58
1/16/2016	73,858,865	0	3,543,250	18	19	585,402	4,666,496	105,064	901,254	834,973	200	225	2,581,249	15	22	661,350	1,658,823	94,886	112,171,706	1.5	40	11,071,288	613,248	615,138	213,962,991	7.94
1/23/2016	70,665,700	1747 (\$5.N); 1790 (\$5.N); 1786 (\$3.N) - 1/18/16	2,864,110	19.5	20.25	492,400	4,696,016	104,467	945,128	846,809	200	225	2,033,849	30	39	535,675	1,742,249	90,096	4,651,362	50	60	646,626	622,838	510,120	91,447,445	3.39
1/30/2016	71,051,685	0	2,291,772	5	5.25	405,017	4,976,880	103,912	948,507	850,282	200	225	2,106,150	48	56	559,777	1,825,583	100,694	4,470,995	75	96	639,118	647,428	507,286	91,485,086	3.39
2/6/2016	78,458,428	1700 (\$1.N); 1702 (\$5.N); 1745 (\$20.N) - 2/01/16	2,298,351	5.5	5.75	412,187	5,095,888	106,149	980,363	1,020,644	300	425	2,198,934	63	71	579,927	1,833,296	99,283	4,823,108	112	136	683,319	650,426	492,926	99,733,228	3.70
2/13/2016	80,754,850	0	2,240,742	6	6.25	405,702	5,332,774	111,268	938,662	848,340	200	225	2,236,840	80	87	592,165	1,918,261	104,613	4,856,599	157	176	684,114	643,040	478,800	102,146,769	3.79
2/20/2016	80,078,271	1677 (\$2.N); 1625 (\$5.N) - 2/15/16	2,219,682	6.5	6.75	405,997	5,261,755	112,333	922,062	1,042,317	300	425	2,348,026	94	104	612,581	1,903,450	105,785	5,158,458	189	212	714,054	637,966	466,916	101,989,653	3.78
2/27/2016	78,832,217	0	2,219,240	7	7.25	408,736	5,046,436	106,701	906,814	1,388,361	575	750	2,482,721	114	125	639,604	1,848,625	96,548	5,807,303	236	266	793,600	624,106	454,291	101,655,303	3.77

Texas Lottery Commission - Weekly Sales Summary for FY 2016 (Unaudited)

Week Ended	Scratch Tickets	New Games & Dates	Lotto Texas	Jackpot		Lotto Extra	Pick 3	Pick 3 Sum It Up	Cash Five	Texas Two Step	Jackpot		Mega Millions	Jackpot		MegaMillier	Daily 4	Daily 4 Sum It Up	Powerball	Jackpot		Power Play	All or Nothing	Texas Triple Chance	Total	Per Cap.
				W	S						M	TH		T	F					W	S					
3/5/2016	80,019,524	1798 (\$3.N); 1796 (\$5.N) - 2/29/16	2,269,811	7.5	7.75	419,311	5,370,371	115,581	944,505	1,944,339	950	1,175	2,720,417	135	144	706,160	1,962,847	105,379	4,803,055	292	40	675,939	647,306	461,886	103,166,430	3.83
3/12/2016	78,524,214	1746 (\$1.N); 1795 (\$2.N); 1744 (\$5.N); 1719 (\$10.N) - 3/7/16 1797 (\$10.N) - 3/9/16	2,170,297	8	8.75	403,101	5,053,423	109,902	910,388	1,366,495	1,450	200	2,226,025	157	15	593,134	1,852,906	98,700	3,014,836	50	60	463,740	613,990	434,688	97,835,839	3.63
3/19/2016	75,446,960	0	2,172,437	9.25	10	402,218	4,900,867	102,413	890,351	841,665	200	225	1,735,447	20	25	493,521	1,790,457	95,659	3,098,598	70	80	473,822	584,322	419,224	93,447,960	3.47
3/26/2016	75,293,759	1765 (\$2.N); 1739 (\$5.N); 1794 (\$5.N) - 3/21/16	2,203,026	10.5	11.25	407,953	4,968,753	103,551	877,783	824,560	200	200	1,791,339	30	35	505,992	1,802,025	95,644	3,463,026	90	101	517,781	581,954	410,578	93,847,723	3.48
4/2/2016	79,316,221	0	2,122,422	11.75	5	394,135	5,261,943	110,824	894,088	935,633	225	300	1,916,857	43	50	531,849	1,817,508	100,053	3,830,324	116	135	558,131	597,500	411,296	98,798,784	3.67
4/9/2016	74,560,898	1697 (\$1.N); 1791 (\$5.N); 1792 (\$5.N); 1753 (\$20.N) - 4/04/16	2,038,934	5.25	5.5	378,330	5,304,473	108,007	891,933	1,249,036	425	575	1,955,604	57	65	534,602	1,848,661	100,773	4,086,953	148	168	583,012	597,536	422,776	94,661,527	3.51
4/16/2016	74,056,586	0	2,040,155	5.75	6	379,360	5,049,570	103,794	871,898	1,516,463	750	950	2,033,797	72	80	550,669	1,750,927	95,758	4,646,599	184	205	644,230	568,884	425,310	94,733,999	3.51
4/23/2016	73,110,080	1754 (\$2.N); 1803 (\$5.N); 1756 (\$50.N) - 4/18/16	2,019,157	6.25	6.5	377,799	4,803,711	100,291	848,658	817,309	200	225	2,109,430	89	97	570,565	1,717,521	90,147	5,191,116	227	251	705,295	548,786	413,554	93,423,419	3.47
4/30/2016	73,448,019	0	2,075,979	6.75	7	394,302	4,950,931	101,225	861,322	1,063,843	300	425	2,442,563	108	118	642,063	1,792,240	97,874	6,414,863	282	314	848,318	559,358	421,746	96,114,645	3.57
5/7/2016	77,593,399	1689 (\$1.N); 1750 (\$5.N); 1743 (\$10.N) - 5/02/16	2,293,077	7.25	7.5	436,015	5,127,841	106,834	884,249	1,417,685	575	750	2,919,675	128	138	750,519	1,816,986	99,541	14,697,176	348	415	1,723,048	570,772	419,550	110,856,367	4.11
5/14/2016	75,263,676	1788 (\$2.N) - 5/09/16	2,099,014	7.75	8	393,023	5,131,497	107,835	865,414	1,767,748	950	1,200	2,918,731	150	161	739,880	1,837,825	105,856	2,878,645	40	50	438,710	560,384	405,588	95,513,825	3.54
5/21/2016	74,274,808	1708 (\$2.N); 1725 (\$3.N); 1761 (\$5.N) - 5/16/16	2,124,399	8.25	8.5	400,183	4,898,201	102,966	856,551	859,730	200	225	3,224,397	174	187	808,317	1,797,716	100,000	2,996,474	60	70	462,213	570,534	404,302	93,880,791	3.48
5/28/2016	71,562,728	0	2,105,898	9.25	10	395,146	4,774,370	103,275	839,838	1,078,483	300	425	3,665,087	203	218	892,777	1,743,568	101,106	3,043,928	80	90	469,990	548,572	388,194	91,712,960	3.40
6/4/2016	73,085,109	0	2,168,799	10.5	11	413,066	4,960,630	103,422	858,482	955,876	600	200	3,873,635	235	251	945,394	1,805,082	99,152	3,448,378	100	110	523,651	560,846	351,138	94,152,659	3.49
6/11/2016	70,593,768	1762 (\$1.N); 1763 (\$5.N); 1734 (\$20.N) - 6/06/16	2,179,971	11.5	12	411,560	4,847,478	104,333	852,366	839,710	200	225	4,233,184	260	280	1,018,754	1,745,262	97,477	3,632,196	123	141	542,899	546,568	338,036	91,983,562	3.41
6/18/2016	69,501,864	0	2,204,927	12.5	13	418,426	4,831,537	96,045	834,113	850,281	300	200	4,946,277	293	310	1,179,954	1,653,616	87,687	3,861,004	153	169	573,597	538,032	327,218	91,904,577	3.41
6/25/2016	69,243,660	1800 (\$1.N); 1766 (\$5.N) - 06/20/16	1,989,146	5	5.25	379,429	4,768,113	97,241	835,308	791,688	225	200	6,331,884	333	363	1,510,757	1,648,047	90,404	4,367,758	184	203	633,783	526,378	320,376	93,533,971	3.47
7/2/2016	70,782,313	1801 (\$3.N) - 6/27/16	2,130,270	5.5	5.75	407,924	4,892,646	99,547	844,909	856,837	225	275	8,953,447	390	415	2,093,598	1,712,740	92,774	5,578,456	222	243	779,768	565,000	323,490	100,113,719	3.71
7/9/2016	67,636,625	1749 (\$2.N); 1785 (\$3.N); 1597 (\$5.N); 1769 (\$10.N) - 7/05/16	2,135,139	6	5	410,294	4,653,385	95,381	826,639	816,979	375	200	15,973,862	454	540	3,658,732	1,631,605	92,411	6,658,992	257	288	906,338	509,290	304,268	106,309,939	3.87
7/16/2016	68,064,720	0	1,993,580	5.25	5.5	380,884	4,660,054	91,288	835,104	837,939	225	275	2,116,570	15	20	593,562	1,616,795	87,798	6,389,154	311	333	870,953	527,068	311,190	89,376,658	3.25
weekly change	0.6%		-6.6%			-7.2%	0.1%	-4.3%	1.0%	2.6%			-86.7%			-83.8%	-0.9%	-5.0%	-4.1%			-3.9%	3.5%	2.3%		-15.9%
SALES	SALES	SALES	SALES	SALES	SALES	SALES	SALES	SALES	SALES	SALES	SALES	SALES	SALES	SALES	SALES	SALES	SALES	SALES	SALES	SALES	SALES	SALES	SALES	SALES	SALES	% of Sales
Calendar Year to date	2,104,380,968		64,897,877			11,887,990	140,650,049	2,946,774	25,035,377	29,573,397			100,084,325			24,870,522	50,289,374	2,748,096	341,341,844			38,093,347	16,522,992	12,027,401	2,965,350,331	100.0%
Fiscal Year to date 2016	3,271,940,756		106,918,935			19,004,620	224,991,535	4,620,607	40,560,254	47,189,547			142,736,565			35,503,603	79,453,115	4,250,053	413,902,979			47,455,377	26,963,708	21,209,732	4,486,691,385	100.0%

*Full week includes 2 days from FY15