



WEEKLY SALES SUMMARY

Unaudited

Week Ending: 7/18/2015

Texas Lottery Commission
Fiscal Year to Date Sales Comparison
Unaudited

Through the Week Ending 7/18/2015 (46 Weeks)

Sales by Game	FY 2013 *	FY 2014 **	FY 2015	\$ Change		% Change	
				FY 2015 to FY 2013	FY 2015 to FY 2014	FY 2015 to FY 2013	FY 2015 to FY 2014
Instants	\$ 2,876,232,906	\$ 2,913,248,594	\$ 3,086,700,149	\$ 210,467,243	\$ 173,451,555	7.3%	6.0%
Lotto Texas	130,706,101	121,024,148	107,484,671	-23,221,430	-13,539,477	-17.8%	-11.2%
Lotto Extra	4,520,342	16,581,255	16,960,209	12,439,867	378,954	-	2.3%
Pick 3	239,671,723	225,461,546	223,209,286	-16,462,437	-2,252,260	-6.9%	-1.0%
Pick 3 Sum It Up	4,506,274	4,485,232	4,588,587	82,314	103,356	1.8%	2.3%
Cash Five	49,824,735	46,588,275	44,479,524	-5,345,211	-2,108,751	-10.7%	-4.5%
Texas Two Step	53,096,898	50,847,387	47,818,583	-5,278,315	-3,028,804	-9.9%	-6.0%
Mega Millions	99,949,456	167,788,184	136,090,951	36,141,495	-31,697,233	36.2%	-18.9%
Megaplier	22,896,000	36,509,903	31,992,226	9,096,226	-4,517,677	39.7%	-12.4%
Daily 4	66,219,891	73,736,285	76,763,076	10,543,185	3,026,791	15.9%	4.1%
Daily 4 Sum It Up	4,279,102	4,556,805	4,441,057	161,955	-115,748	3.8%	-2.5%
Powerball	253,840,753	182,555,859	184,382,846	-69,457,907	1,826,987	-27.4%	1.0%
Power Play	26,541,390	22,213,197	23,384,444	-3,156,946	1,171,247	-11.9%	5.3%
All or Nothing	62,666,413	41,576,656	33,692,444	-28,973,969	-7,884,212	-46.2%	-19.0%
Monopoly	-	- ¹	2,656,310	2,656,310	2,656,310	-	-
Total	\$ 3,894,951,983	\$ 3,907,173,324	\$ 4,024,644,362	\$ 129,692,379	\$ 117,471,038	3.3%	3.0%

* 2 extra days

** 1 extra day

¹ Monopoly sales were suspended after draw on 12/12/14

Texas Lottery Commission
Fiscal Year to Date Cumulative Average Sales Comparison
Unaudited

Through the Week Ending 7/18/2015 (46 Weeks)

Sales by Game	FY 2013	FY 2014	FY 2015
Instant	\$ 8,904,746	\$ 9,047,356	\$ 9,615,888
Lotto Texas	404,663	375,851	334,843
Lotto Extra	*** 46,126	51,495	52,836
Pick 3	742,018	700,191	695,356
Pick 3 Sum It Up	13,951	13,929	14,295
Cash Five	154,256	144,684	138,565
Texas Two Step	164,387	157,911	148,968
Mega Millions	309,441	521,081	423,959
Megaplier	70,885	113,385	99,664
Daily 4	205,015	228,995	239,137
Daily 4 Sum It Up	13,248	14,152	13,835
Powerball	785,885	566,944	574,401
Power Play	82,171	68,985	72,849
All or Nothing	* 233,830	129,120	104,961
Monopoly	-	- **	48,297
Total	\$ 12,130,622	\$ 12,134,079	\$ 12,577,854

thru 7/20/2013
323 days

thru 7/19/2014
322 days

thru 7/18/2015
321 days

* 268 days

** 55 days

*** 98 days

Texas Lottery Commission
Fiscal Year Over Year Change in Sales
Unaudited
FY 2015 Compared to FY 2014

			INSTANT TICKETS				DRAW GAMES				TOTAL SALES			
Week	FY 2015 Week	FY 2015 Ending	FY 2015	FY 2014	Difference	% change - Cumulative Sales	FY 2015	FY 2014	Difference	% change - Cumulative Sales	FY 2015	FY 2014	Difference	% change - Cumulative Sales
1		9/6/2014 *	\$54,911,801	\$58,587,757	(\$3,675,956)	-6.3%	\$17,482,488	\$22,369,499	(\$4,887,011)	-21.8%	\$72,394,289	\$80,957,256	(\$8,562,967)	-10.6%
2		9/13/2014	\$61,436,533	\$57,135,931	\$4,300,602	7.5%	\$19,097,081	\$25,412,980	(\$6,315,899)	-24.9%	\$80,533,614	\$82,548,911	(\$2,015,297)	-2.4%
3		9/20/2014	\$60,959,234	\$59,018,194	\$1,941,040	3.3%	\$20,567,894	\$29,161,241	(\$8,593,347)	-29.5%	\$81,527,128	\$88,179,435	(\$6,652,307)	-7.5%
4		9/27/2014	\$59,710,056	\$57,927,984	\$1,782,072	3.1%	\$19,920,828	\$20,012,313	(\$91,485)	-0.5%	\$79,630,884	\$77,940,297	\$1,690,588	2.2%
5		10/4/2014	\$62,119,854	\$62,146,816	(\$26,962)	0.0%	\$18,531,421	\$20,043,557	(\$1,512,136)	-7.5%	\$80,651,275	\$82,190,373	(\$1,539,098)	-1.9%
6		10/11/2014	\$61,253,665	\$60,867,582	\$386,083	0.6%	\$18,985,332	\$19,480,962	(\$495,631)	-2.5%	\$80,238,997	\$80,348,544	(\$109,548)	-0.1%
7		10/18/2014	\$60,230,048	\$60,612,193	(\$382,145)	-0.6%	\$19,538,402	\$20,079,610	(\$541,209)	-2.7%	\$79,768,450	\$80,691,803	(\$923,354)	-1.1%
8		10/25/2014	\$62,384,112	\$59,548,277	\$2,835,835	4.8%	\$21,475,643	\$19,319,928	\$2,155,715	11.2%	\$83,859,755	\$78,868,205	\$4,991,550	6.3%
9		11/1/2014	\$63,404,713	\$61,710,236	\$1,694,477	2.7%	\$23,568,817	\$18,308,976	\$5,259,842	28.7%	\$86,973,530	\$80,019,212	\$6,954,319	8.7%
10		11/8/2014	\$65,486,719	\$61,668,594	\$3,818,125	6.2%	\$23,749,032	\$19,555,070	\$4,193,963	21.4%	\$89,235,751	\$81,223,664	\$8,012,088	9.9%
11		11/15/2014	\$61,745,521	\$60,057,025	\$1,688,496	2.8%	\$17,449,604	\$20,930,071	(\$3,480,468)	-16.6%	\$79,195,125	\$80,987,096	(\$1,791,972)	-2.2%
12		11/22/2014	\$66,353,583	\$63,118,266	\$3,235,317	5.1%	\$17,108,084	\$19,086,770	(\$1,978,687)	-10.4%	\$83,461,667	\$82,205,036	\$1,256,631	1.5%
13		11/29/2014	\$60,471,184	\$57,145,294	\$3,325,890	5.8%	\$17,303,129	\$20,434,618	(\$3,131,489)	-15.3%	\$77,774,313	\$77,579,912	\$194,401	0.3%
14		12/6/2014	\$66,648,696	\$59,883,783	\$6,764,913	11.3%	\$18,862,425	\$22,791,842	(\$3,929,417)	-17.2%	\$85,511,121	\$82,675,625	\$2,835,496	3.4%
15		12/13/2014	\$65,708,630	\$60,310,298	\$5,398,332	9.0%	\$18,649,598	\$35,859,153	(\$17,209,555)	-48.0%	\$84,358,228	\$96,169,451	(\$11,811,223)	-12.3%
16		12/20/2014	\$68,551,298	\$65,088,999	\$3,462,299	5.3%	\$19,051,100	\$46,832,745	(\$27,781,646)	-59.3%	\$87,602,398	\$111,921,744	(\$24,319,347)	-21.7%
17		12/27/2014	\$73,858,618	\$67,721,619	\$6,136,999	9.1%	\$20,006,357	\$18,218,091	\$1,788,266	9.8%	\$93,864,975	\$85,939,710	\$7,925,265	9.2%
18		1/3/2015	\$67,733,268	\$67,162,991	\$570,277	0.8%	\$21,355,167	\$19,140,745	\$2,214,422	11.6%	\$89,088,435	\$86,303,736	\$2,784,699	3.2%
19		1/10/2015	\$64,745,641	\$65,049,914	(\$304,273)	-0.5%	\$22,265,347	\$17,954,333	\$4,311,015	24.0%	\$87,010,988	\$83,004,247	\$4,006,742	4.8%
20		1/17/2015	\$64,015,166	\$62,731,830	\$1,283,336	2.0%	\$23,694,617	\$18,900,213	\$4,794,405	25.4%	\$87,709,783	\$81,632,043	\$6,077,741	7.4%
21		1/24/2015	\$62,569,156	\$59,085,886	\$3,483,270	5.9%	\$19,765,442	\$19,558,830	\$206,612	1.1%	\$82,334,598	\$78,644,716	\$3,689,882	4.7%
22		1/31/2015	\$68,001,588	\$64,099,096	\$3,902,492	6.1%	\$22,877,000	\$20,764,006	\$2,112,995	10.2%	\$90,878,588	\$84,863,102	\$6,015,487	7.1%
23		2/7/2015	\$75,677,650	\$67,717,353	\$7,960,297	11.8%	\$31,662,209	\$22,433,672	\$9,228,537	41.1%	\$107,339,859	\$90,151,025	\$17,188,834	19.1%
24		2/14/2015	\$75,368,712	\$69,949,998	\$5,418,714	7.7%	\$46,091,747	\$25,572,367	\$20,519,380	80.2%	\$121,460,459	\$95,522,365	\$25,938,094	27.2%
25		2/21/2015	\$74,833,076	\$72,422,148	\$2,410,928	3.3%	\$19,865,172	\$31,832,665	(\$11,967,493)	-37.6%	\$94,698,248	\$104,254,813	(\$9,556,565)	-9.2%
26		2/28/2015	\$69,918,013	\$72,883,830	(\$2,965,817)	-4.1%	\$19,735,352	\$21,827,140	(\$2,091,789)	-9.6%	\$89,653,365	\$94,710,970	(\$5,057,606)	-5.3%
27		3/7/2015	\$74,848,961	\$73,726,744	\$1,122,217	1.5%	\$19,946,068	\$22,528,352	(\$2,582,284)	-11.5%	\$94,795,029	\$96,255,096	(\$1,460,067)	-1.5%
28		3/14/2015	\$70,079,409	\$71,026,808	(\$947,399)	-1.3%	\$20,044,562	\$25,171,358	(\$5,126,797)	-20.4%	\$90,123,971	\$96,198,166	(\$6,074,196)	-6.3%
29		3/21/2015	\$70,368,686	\$69,174,125	\$1,194,561	1.7%	\$18,480,795	\$25,837,564	(\$7,356,769)	-28.5%	\$88,849,481	\$95,011,689	(\$6,162,208)	-6.5%
30		3/28/2015	\$70,280,600	\$66,886,917	\$3,393,683	5.1%	\$17,595,205	\$18,604,870	(\$1,009,665)	-5.4%	\$87,875,805	\$85,491,787	\$2,384,018	2.8%
31		4/4/2015	\$74,369,952	\$71,218,020	\$3,151,932	4.4%	\$18,378,917	\$19,883,667	(\$1,504,750)	-7.6%	\$92,748,869	\$91,101,687	\$1,647,182	1.8%
32		4/11/2015	\$67,416,817	\$65,970,648	\$1,446,169	2.2%	\$18,594,844	\$18,875,485	(\$280,641)	-1.5%	\$86,011,661	\$84,846,133	\$1,165,529	1.4%
33		4/18/2015	\$68,393,316	\$64,922,280	\$3,471,036	5.3%	\$18,104,632	\$19,723,048	(\$1,618,416)	-8.2%	\$86,497,948	\$84,645,328	\$1,852,620	2.2%
34		4/25/2015	\$70,078,182	\$60,578,829	\$9,499,353	15.7%	\$17,957,150	\$18,978,148	(\$1,020,998)	-5.4%	\$88,035,332	\$79,556,977	\$8,478,355	10.7%
35		5/2/2015	\$71,744,718	\$64,244,545	\$7,500,173	11.7%	\$18,961,113	\$19,029,632	(\$68,519)	-0.4%	\$90,705,831	\$83,274,177	\$7,431,655	8.9%
36		5/9/2015	\$73,415,978	\$65,679,029	\$7,736,949	11.8%	\$20,210,341	\$19,350,478	\$859,863	4.4%	\$93,626,319	\$85,029,507	\$8,596,812	10.1%
37		5/16/2015	\$72,152,109	\$63,627,971	\$8,524,138	13.4%	\$20,362,774	\$19,865,609	\$497,165	2.5%	\$92,514,883	\$83,493,580	\$9,021,303	10.8%
38		5/23/2015	\$70,399,950	\$61,902,451	\$8,497,499	13.7%	\$21,246,276	\$19,892,846	\$1,353,430	6.8%	\$91,646,226	\$81,795,297	\$9,850,929	12.0%
39		5/30/2015	\$68,547,554	\$61,264,953	\$7,282,601	11.9%	\$22,227,946	\$20,014,636	\$2,213,310	11.1%	\$90,775,500	\$81,279,589	\$9,495,911	11.7%
40		6/6/2015	\$71,254,006	\$64,019,948	\$7,234,058	11.3%	\$20,739,703	\$21,782,886	(\$1,043,184)	-4.8%	\$91,993,709	\$85,802,834	\$6,190,875	7.2%
41		6/13/2015	\$65,878,375	\$59,742,598	\$6,135,777	10.3%	\$17,216,403	\$19,736,748	(\$2,520,345)	-12.8%	\$83,094,778	\$79,479,346	\$3,615,432	4.5%
42		6/20/2015	\$66,658,742	\$59,010,863	\$7,647,879	13.0%	\$17,340,531	\$17,095,336	\$245,195	1.4%	\$83,999,273	\$76,106,199	\$7,893,074	10.4%

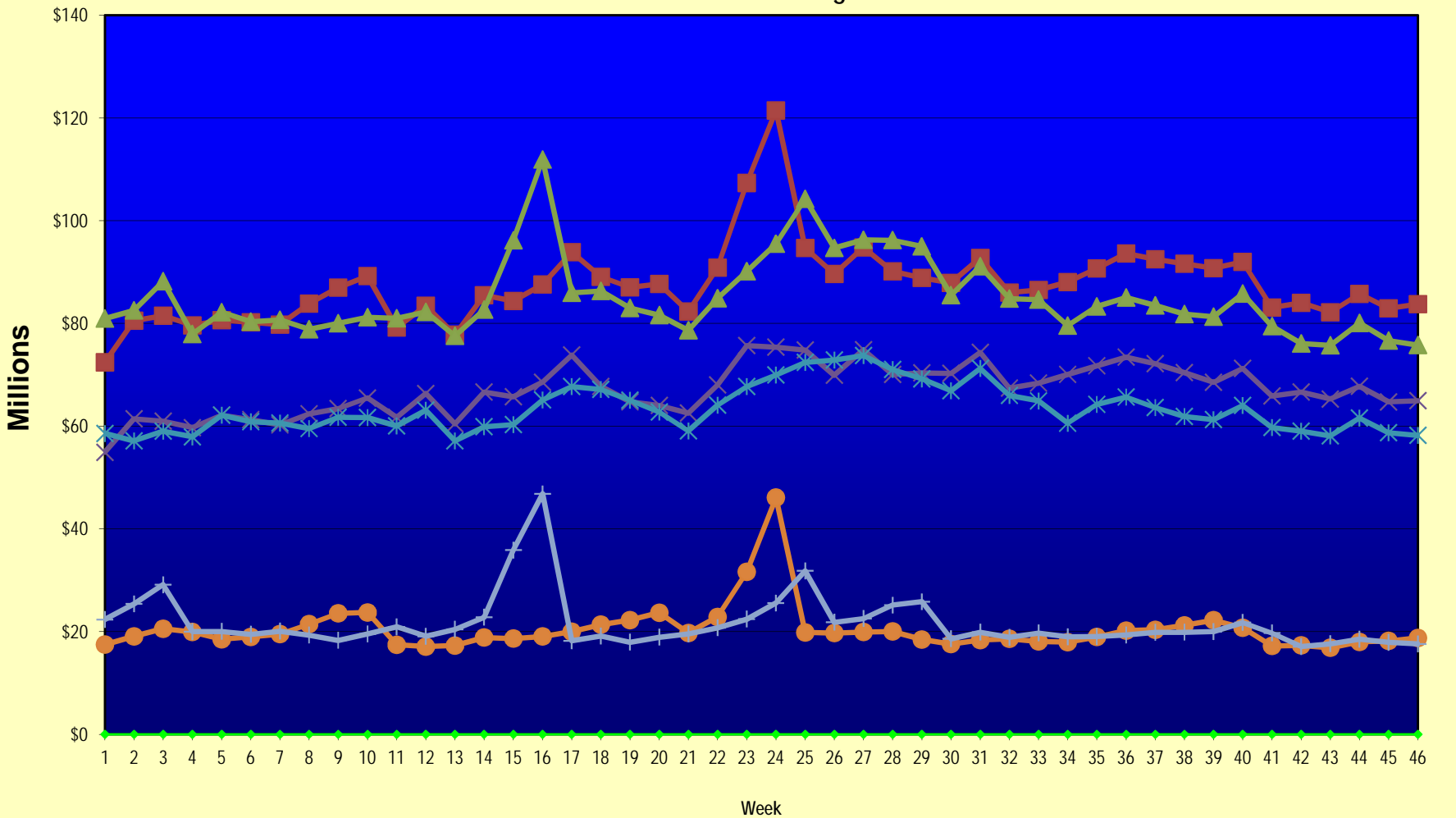
Texas Lottery Commission
Fiscal Year Over Year Change in Sales
Unaudited
FY 2015 Compared to FY 2014

			INSTANT TICKETS				DRAW GAMES				TOTAL SALES			
FY 2015			FY 2015	FY 2014	Difference	% change - Cumulative Sales	FY 2015	FY 2014	Difference	% change - Cumulative Sales	FY 2015	FY 2014	Difference	% change - Cumulative Sales
Week	Week	Ending												
43	6/27/2015		\$65,282,276	\$58,102,191	\$7,180,085	12.4%	\$16,873,368	\$17,635,736	(\$762,368)	-4.3%	\$82,155,644	\$75,737,927	\$6,417,717	8.5%
44	7/4/2015		\$67,757,752	\$61,566,071	\$6,191,681	10.1%	\$18,007,540	\$18,521,529	(\$513,990)	-2.8%	\$85,765,292	\$80,087,600	\$5,677,692	7.1%
45	7/11/2015		\$64,718,254	\$58,729,674	\$5,988,580	10.2%	\$18,203,985	\$17,913,387	\$290,599	1.6%	\$82,922,239	\$76,643,061	\$6,279,179	8.2%
46	7/18/2015		\$64,957,977	\$58,202,035	\$6,755,942	11.6%	\$18,792,785	\$17,602,032	\$1,190,754	6.8%	\$83,750,762	\$75,804,067	\$7,946,696	10.5%
47	7/25/2015			\$57,220,932				\$17,736,889				\$74,957,821		
48	8/1/2015			\$64,207,294				\$18,208,743				\$82,416,037		
49	8/8/2015			\$60,066,007				\$19,022,945				\$79,088,952		
50	8/15/2015			\$58,374,809				\$18,567,246				\$76,942,055		
51	8/22/2015			\$57,277,475				\$18,916,460				\$76,193,935		
52	8/29/2015			\$61,884,256				\$17,283,925				\$79,168,181		
	8/31/2015 **			\$7,949,803				\$706,956				\$8,656,759		
Total thru Current Week			\$3,086,700,149	\$2,913,248,594	\$173,451,555	6.0%	\$937,944,213	\$993,924,730	(\$55,980,518)	-5.6%	\$4,024,644,362	\$3,907,173,324	\$117,471,038	3.0%
Fiscal Year Total			\$3,086,700,149	\$3,280,229,170			\$937,944,213	\$1,104,367,893			\$4,024,644,362	\$4,384,597,063		

* FY 15 includes 6 days

** FY 15 includes 2 days; FY 14 includes 1 day

Texas Lottery Commission Fiscal Year Over Year Change in Sales



◆ Week
 ■ Total Sales 2015
 ▲ Total Sales 2014
 × Instant Tickets 2015
 ✱ Instant Tickets 2014
 ● Draw Games 2015
 + Draw Games 2014

Note: Week 1 is not a full week of sales as this report is prepared on a Fiscal Year basis.

Texas Lottery Commission
Instant Tickets by Price Point
Sales, Prize Expense, Sales Contribution and Payout Percentage With Year Over Year Changes
Unaudited

Fiscal Year	Price Point	# of Active Games	FY Sales	% of Instant Ticket Sales	Year over Year Change in Sales	FY Prize Expense	Year over Year Change in Prize Expense	FY Sales Contribution	Year over Year Change in Contribution	Average Prize Payout %	Year over Year Change in Payout %
2014	\$1.00	31	163,073,835	5.6%		97,711,950		65,361,885		59.9%	-1.3%
Through	\$2.00	39	333,598,086	11.5%		216,573,764		117,024,322		64.9%	-0.1%
7/19/2014	\$3.00	18	316,729,158	10.9%		207,730,119		108,999,039		65.6%	0.1%
	\$5.00	54	944,698,305	32.4%		641,650,828		303,047,477		67.9%	-0.2%
	\$10.00	17	548,363,660	18.8%		385,256,147		163,107,513		70.3%	-1.1%
	\$20.00	10	482,252,500	16.6%		361,056,855		121,195,645		74.9%	0.0%
	\$50.00	3	124,533,050	4.3%		96,716,793		27,816,257		77.7%	0.0%
Total		172	\$2,913,248,594			\$2,006,696,456		\$906,552,138		68.9%	-0.1%
2015	\$1.00	23	147,284,431	4.8%		89,220,694		58,063,737		60.6%	1.1%
thru	\$2.00	35	310,586,990	10.1%		203,662,077		106,924,913		65.6%	1.1%
7/18/2015	\$3.00	15	311,766,063	10.1%		205,529,690		106,236,373		65.9%	0.5%
	\$5.00	52	941,420,555	30.5%		639,598,269		301,822,286		67.9%	0.0%
	\$10.00	18	654,163,980	21.2%		459,785,642		194,378,338		70.3%	0.0%
	\$20.00	11	565,076,180	18.3%		423,674,050		141,402,130		75.0%	0.1%
	\$50.00	4	156,401,950	5.1%		121,583,755		34,818,195		77.7%	0.1%
Total		158	\$3,086,700,149			\$2,143,054,177		\$943,645,972		69.4%	0.7%
Variance	\$1.00	-8	-15,789,404		-9.7%	-8,491,256	-8.7%	-7,298,148	-11.2%	0.66%	
2015 to	\$2.00	-4	-23,011,096		-6.9%	-12,911,688	-6.0%	-10,099,408	-8.6%	0.65%	
2014	\$3.00	-3	-4,963,095		-1.6%	-2,200,429	-1.1%	-2,762,666	-2.5%	0.34%	
	\$5.00	-2	-3,277,750		-0.3%	-2,052,558	-0.3%	-1,225,192	-0.4%	0.02%	
	\$10.00	1	105,800,320		19.3%	74,529,495	19.3%	31,270,825	19.2%	0.03%	
	\$20.00	1	82,823,680		17.2%	62,617,195	17.3%	20,206,485	16.7%	0.11%	
	\$50.00	1	31,868,900		25.6%	24,866,963	25.7%	7,001,937	25.2%	0.07%	
Total		-14	\$173,451,555		6.0%	\$136,357,722	6.8%	\$37,093,833	4.1%	0.55%	

Notes - Instant Ticket Variances

Texas Lottery Commission
Instant Tickets by Price Point
Sales, Prize Expense, Sales Contribution and Payout Percentage With Year Over Year Changes
 Unaudited

		FY 2015		FY 2014		Difference
Sales	\$1 - \$5	\$1,711,058,039		\$1,758,099,384		-\$47,041,345
Prize Exp.	\$1 - \$5	\$1,138,010,730		\$1,163,666,661		-\$25,655,931
Sales Cont.	\$1 - \$5	\$573,047,309		\$594,432,723		-\$21,385,414
Prize Exp. %	\$1 - \$5	66.5%		66.2%		0.3%
		FY 2015		FY 2014		Difference
Sales	\$10 - \$50	\$1,375,642,110		\$1,155,149,210		\$220,492,900
Prize Exp.	\$10 - \$50	\$1,005,043,447		\$843,029,795		\$162,013,653
Sales Cont.	\$10 - \$50	\$370,598,663		\$312,119,415		\$58,479,247
Prize Exp. %	\$10 - \$50	73.1%		73.0%		0.1%
		FY 2015		FY 2014		Difference
Sales	Instant	\$3,086,700,149		\$2,913,248,594		\$173,451,555
Prize Exp.	Instant	\$2,143,054,177		\$2,006,696,456		\$136,357,722
Sales Cont.	Instant	\$943,645,972		\$906,552,138		\$37,093,833
Prize Exp. %	Instant	69.4%		68.9%		0.5%

		FY 2015		FY 2014		Difference
Sales	\$1 - \$10	\$2,365,222,019		\$2,306,463,044		\$58,758,975
Prize Exp.	\$1 - \$10	\$1,597,796,372		\$1,548,922,808		\$48,873,564
Sales Cont.	\$1 - \$10	\$767,425,647		\$757,540,236		\$9,885,411
Prize Exp. %	\$1 - \$10	67.6%		67.2%		0.4%
		FY 2015		FY 2014		Difference
Sales	\$20 - \$50	\$721,478,130		\$606,785,550		\$114,692,580
Prize Exp.	\$20 - \$50	\$545,257,805		\$457,773,647		\$87,484,158
Sales Cont.	\$20 - \$50	\$176,220,325		\$149,011,903		\$27,208,422
Prize Exp. %	\$20 - \$50	75.6%		75.4%		0.1%
		FY 2015		FY 2014		Difference
Sales	Instant	\$3,086,700,149		\$2,913,248,594		\$173,451,555
Prize Exp.	Instant	\$2,143,054,177		\$2,006,696,456		\$136,357,722
Sales Cont.	Instant	\$943,645,972		\$906,552,138		\$37,093,833
Prize Exp. %	Instant	69.4%		68.9%		0.5%

Texas Lottery Commission
Weekly Sales Summary
& Comparison to Previous Week
 Unaudited

	Week Ending 7/18/2015	% of Sales	Week Ending 7/11/2015	% of Sales	\$ change	% change
	<u>THIS WEEK</u>		<u>LAST WEEK</u>			
Total Sales	<u>\$83,750,762</u>		<u>\$82,922,239</u>		<u>\$828,523</u>	1.00%
Instant Tickets	<u>\$64,957,977</u>	77.6%	<u>\$64,718,254</u>	78.0%	<u>\$239,723</u>	0.37%
Lotto	\$2,392,139	2.9%	\$2,385,635	2.9%	\$6,504	0.27%
Lotto Extra	\$398,625	0.5%	\$398,273	0.5%	\$352	0.09%
Pick 3	\$4,667,390	5.6%	\$4,781,949	5.8%	-\$114,559	-2.40%
Pick 3 Sum It Up	\$97,419	0.1%	\$102,113	0.1%	-\$4,694	-4.60%
Cash Five	\$939,029	1.1%	\$960,531	1.2%	-\$21,502	-2.24%
Texas Two Step	\$1,222,930	1.5%	\$937,800	1.1%	\$285,130	30.40%
Mega Millions	\$3,222,371	3.8%	\$2,859,381	3.4%	\$362,990	12.69%
Megaplier	\$767,643	0.9%	\$706,608	0.9%	\$61,035	8.64%
Daily 4	\$1,612,165	1.9%	\$1,664,674	2.0%	-\$52,509	-3.15%
Daily 4 Sum It Up	\$85,167	0.1%	\$90,614	0.1%	-\$5,447	-6.01%
Powerball	\$2,371,064	2.8%	\$2,293,500	2.8%	\$77,564	3.38%
Power Play	\$351,688	0.4%	\$346,375	0.4%	\$5,313	1.53%
All or Nothing	\$665,156	0.8%	\$676,594	0.8%	-\$11,438	-1.69%
Monopoly	\$0	0.0%	-\$60	0.0%	\$60	-100.00%
Total Draw Game Sales	<u>\$18,792,785</u>		<u>\$18,203,985</u>		<u>\$588,800</u>	3.23%

* Totals may not sum due to rounding.

Texas Lottery Commission
Weekly Sales Summary
Unaudited

INSTANT TICKETS
TOP TEN SELLING GAMES

For the Week Ending: 7/18/15

Rank	Price Point	Game	Sales (Millions)
1	\$ 10	TEXAS GOLD	\$ 4.622
2	\$ 20	\$500,000,000 CASH	\$ 4.581
3	\$ 20	100X THE CASH	\$ 3.758
4	\$ 5	WIN IT ALL	\$ 3.639
5	\$ 10	50X THE CASH	\$ 3.099
6	\$ 10	CASHWORD MULTIPLIER	\$ 2.789
7	\$ 50	DIAMOND DOLLARS	\$ 2.755
8	\$ 20	MONEY MONEY MILLIONAIRE	\$ 2.250
9	\$ 3	TEXAS LOTERIA	\$ 2.195
10	\$ 3	BONUS CASHWORD	\$ 2.072

Texas Lottery Commission
Prize Payout Tracking Report
Unaudited

Through the Week Ending: 7/18/15

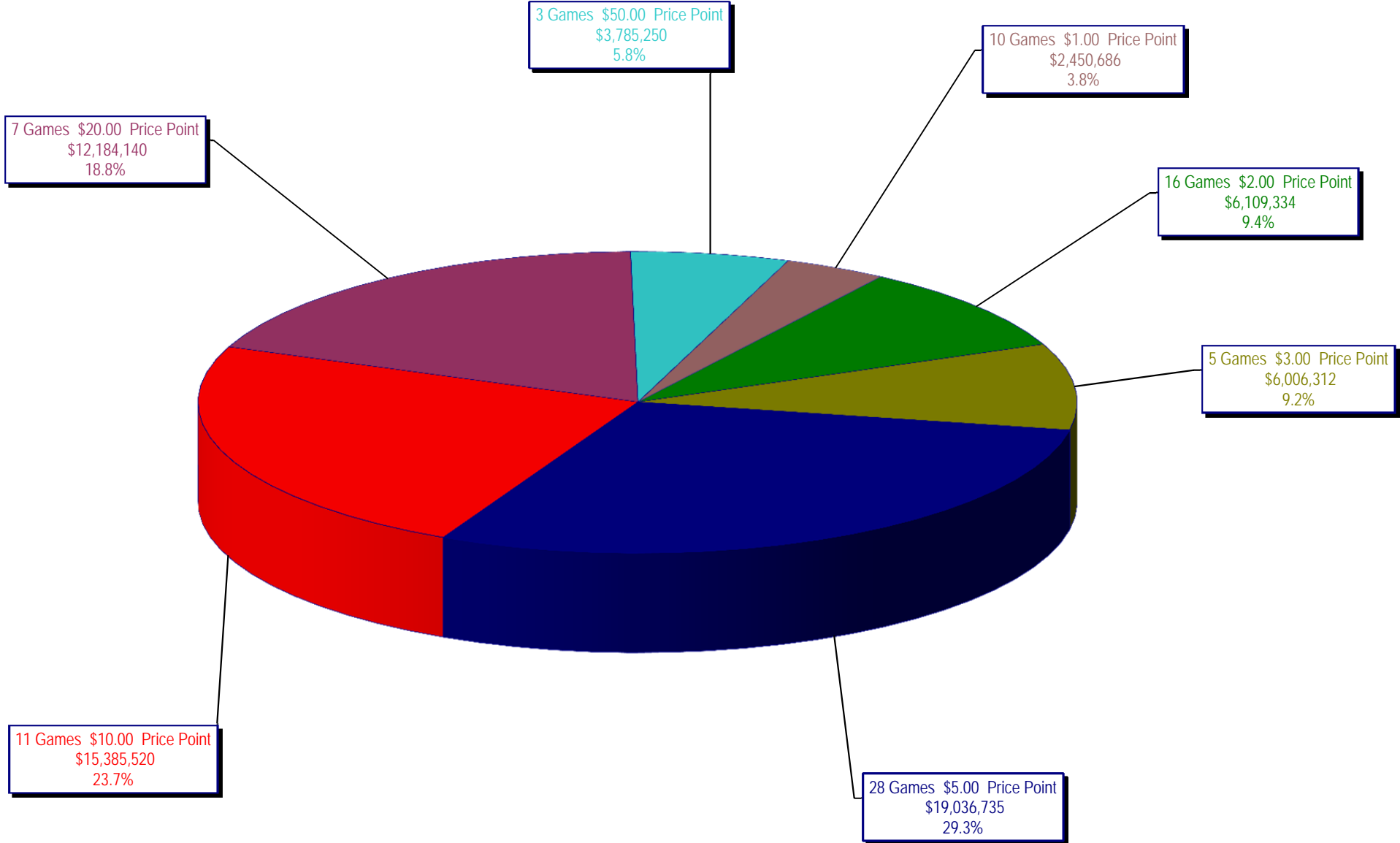
Draw Game Sales

		FY Sales Through Week Ending 7/18/2015		FY Prize Expense Through Week Ending 7/18/2015	Actual* Prize Payout	Base Payout (Prize Pool)
Lotto	\$	107,484,671	\$	54,359,308	50.57%	54.00%
Lotto Extra		16,960,209		9,382,604	55.32%	53.70%
Pick 3		223,209,286		104,963,370	47.02%	50.00%
Pick 3 Sum It Up		4,588,587		2,347,127	51.15%	50.00%
Cash Five		44,479,524		22,239,781	50.00%	50.00%
Texas Two Step		47,818,583		24,379,069	50.98%	50.00%
Mega Millions		136,090,951		69,407,131	51.00%	50.00%**
Megaplier		31,992,226		15,994,931	50.00%	N/A
Daily 4		76,763,076		34,194,875	44.55%	50.00%
Daily 4 Sum It Up		4,441,057		1,684,368	37.93%	50.00%
Powerball		184,382,846		92,277,534	50.05%	50.00%**
Power Play		23,384,444		11,703,966	50.05%	N/A
All or Nothing		33,692,444		19,001,016	56.40%	55.98%
Monopoly		2,656,310		3,617,028	136.17%	50.00%
Totals	\$	937,944,213	\$	465,552,107	49.64%	

* Before Unclaimed Prizes

** Estimated; depends on # of guaranteed prizes won in Texas

Texas Lottery Commission
Instant Ticket Sales
For the Week Ending 7/18/15
(Unaudited)



Texas Lottery Commission
All Game Sales
For the Week Ending 7/18/15
(Unaudited)

