



WEEKLY SALES SUMMARY

Unaudited

[Week Ending: 08/06/2011](#)

Texas Lottery Commission
Fiscal Year to Date Sales Comparison
Unaudited

Through the week ending 08/06/2011 (49 weeks)

Sales by Game	FY 2009 *	FY 2010 **	FY 2011	\$ Change		% Change	
				FY 2011 to FY 2009	FY 2011 to FY 2010 to	FY 2011 to FY 2009	FY 2011 to FY 2010
Instants	\$ 2,623,719,843	\$ 2,598,402,419	\$ 2,664,747,714	\$ 41,027,871	\$ 66,345,295	1.6%	2.6%
Lotto Texas	183,532,002	245,561,852	159,962,171	-23,569,831	-85,599,681	-12.8%	-34.9%
Pick 3	268,987,462	253,011,682	257,023,560	-11,963,903	4,011,878	-4.4%	1.6%
Pick 3 Sum It Up	5,601,629	5,048,752	5,202,650	-398,980	153,898	-7.1%	3.0%
Cash Five	66,642,234	62,187,028	60,472,978	-6,169,257	-1,714,051	-9.3%	-2.8%
Texas Two Step	47,201,571	46,254,538	47,123,564	-78,007	869,026	-0.2%	1.9%
Mega Millions	181,428,018	156,341,855	168,894,008	-12,534,010	12,552,153	-6.9%	8.0%
Megaplier	41,603,214	35,015,071	35,409,954	-6,193,260	394,883	-14.9%	1.1%
Daily 4	43,973,786	49,850,931	54,693,094	10,719,309	4,842,163	24.4%	9.7%
Daily 4 Sum It Up	5,122,431	4,510,727	4,142,757	-979,674	-367,970	-19.1%	-8.2%
Powerball	-	50,604,176	92,457,249	92,457,249	41,853,073	-	-
Power Play	-	11,968,650	21,297,710	21,297,710	9,329,060	-	-
Total	\$ 3,467,812,190	\$ 3,518,757,681	\$ 3,571,427,408	\$ 103,615,218	\$ 52,669,727	3.0%	1.5%

* 2 extra days ** 1 extra day

Texas Lottery Commission
Fiscal Year to Date Cumulative Average Sales Comparison
Unaudited

Through the week ending 08/06/2011 (49 weeks)

Sales by Game	FY 2009	FY 2010	FY 2011
Instant	\$ 7,671,695	\$ 7,619,948	\$ 7,837,493
Lotto Texas	536,643	720,123	470,477
Pick 3	786,513	741,970	755,952
Pick 3 Sum It Up	16,379	14,806	15,302
Cash Five	194,860	182,367	177,862
Texas Two Step	138,016	135,644	138,599
Mega Millions	530,491	458,481	496,747
Megaplier	121,647	102,683	104,147
Daily 4	128,578	146,190	160,862
Daily 4 Sum It Up	14,978	13,228	12,185
Powerball	-	267,747 *	271,933
Power Play	-	63,326 *	62,640
Total	\$ 10,139,802	\$ 10,466,513	\$ 10,504,198

thru 08/08/2009
342 days

thru 08/07/2010
341 days
*189 days

thru 08/06/11
340 days

Texas Lottery Commission
Fiscal Year Over Year Change in Sales
Unaudited
FY 2011 Compared to FY 2010

Week	FY 2011 Week Ending	INSTANT TICKETS				ON-LINE GAMES				TOTAL SALES			
		FY 2011	FY 2010	Difference	% change - Cumulative Sales	FY 2011	FY 2010	Difference	% change - Cumulative Sales	FY 2011	FY 2010	Difference	% change - Cumulative Sales
1	9/4/2010**	\$31,659,033	\$40,148,241	(\$8,489,208)	-21.1%	\$11,430,717	\$15,859,194	(\$4,428,478)	-27.9%	\$43,089,750	\$56,007,435	(\$12,917,686)	-23.1%
2	9/11/2010	\$48,912,598	\$49,896,100	(\$983,502)	-2.0%	\$16,398,160	\$18,206,315	(\$1,808,155)	-9.9%	\$65,310,758	\$68,102,415	(\$2,791,657)	-4.1%
3	9/18/2010	\$48,988,241	\$50,971,937	(\$1,983,696)	-3.9%	\$17,166,827	\$18,859,622	(\$1,692,795)	-9.0%	\$66,155,068	\$69,831,559	(\$3,676,491)	-5.3%
4	9/25/2010	\$48,471,310	\$49,975,243	(\$1,503,933)	-3.0%	\$15,623,813	\$19,345,435	(\$3,721,622)	-19.2%	\$64,095,123	\$69,320,678	(\$5,225,555)	-7.5%
5	10/2/2010	\$50,145,138	\$52,283,569	(\$2,138,431)	-4.1%	\$16,453,939	\$20,991,695	(\$4,537,756)	-21.6%	\$66,599,077	\$73,275,264	(\$6,676,187)	-9.1%
6	10/9/2010	\$50,918,591	\$52,238,261	(\$1,319,670)	-2.5%	\$16,974,963	\$21,547,439	(\$4,572,476)	-21.2%	\$67,893,554	\$73,785,700	(\$5,892,146)	-8.0%
7	10/16/2010	\$49,096,011	\$50,806,599	(\$1,710,588)	-3.4%	\$16,661,904	\$23,114,594	(\$6,452,690)	-27.9%	\$65,757,915	\$73,921,193	(\$8,163,278)	-11.0%
8	10/23/2010	\$50,158,946	\$50,731,592	(\$572,646)	-1.1%	\$17,374,460	\$17,274,411	\$100,049	0.6%	\$67,533,406	\$68,006,003	(\$472,598)	-0.7%
9	10/30/2010	\$49,775,287	\$50,684,853	(\$909,566)	-1.8%	\$18,402,209	\$15,710,720	\$2,691,489	17.1%	\$68,177,496	\$66,395,573	\$1,781,923	2.7%
10	11/6/2010	\$53,337,848	\$54,633,928	(\$1,296,080)	-2.4%	\$17,321,908	\$16,961,611	\$360,297	2.1%	\$70,659,756	\$71,595,539	(\$935,784)	-1.3%
11	11/13/2010	\$52,285,479	\$52,109,218	\$176,261	0.3%	\$16,388,690	\$16,407,349	(\$18,660)	-0.1%	\$68,674,169	\$68,516,567	\$157,602	0.2%
12	11/20/2010	\$52,424,036	\$52,427,881	(\$3,845)	0.0%	\$16,138,022	\$15,829,561	\$308,461	1.9%	\$68,562,058	\$68,257,442	\$304,616	0.4%
13	11/27/2010	\$51,262,518	\$50,519,477	\$743,041	1.5%	\$15,967,075	\$15,710,447	\$256,628	1.6%	\$67,229,593	\$66,229,924	\$999,669	1.5%
14	12/4/2010	\$56,385,259	\$54,376,448	\$2,008,811	3.7%	\$17,553,175	\$16,905,341	\$647,835	3.8%	\$73,938,434	\$71,281,789	\$2,656,646	3.7%
15	12/11/2010	\$56,540,048	\$52,654,632	\$3,885,416	7.4%	\$17,703,352	\$17,726,695	(\$23,343)	-0.1%	\$74,243,400	\$70,381,327	\$3,862,073	5.5%
16	12/18/2010	\$57,699,991	\$54,542,793	\$3,157,198	5.8%	\$18,465,282	\$19,379,751	(\$914,469)	-4.7%	\$76,165,273	\$73,922,544	\$2,242,730	3.0%
17	12/25/2010	\$59,800,480	\$56,482,042	\$3,318,438	5.9%	\$19,635,771	\$17,582,779	\$2,052,992	11.7%	\$79,436,251	\$74,064,821	\$5,371,430	7.3%
18	1/1/2011	\$61,423,121	\$57,952,304	\$3,470,817	6.0%	\$26,122,257	\$16,542,885	\$9,579,372	57.9%	\$87,545,378	\$74,495,189	\$13,050,189	17.5%
19	1/8/2011	\$60,976,653	\$53,471,476	\$7,505,177	14.0%	\$33,521,570	\$17,025,616	\$16,495,954	96.9%	\$94,498,223	\$70,497,092	\$24,001,131	34.0%
20	1/15/2011	\$50,099,433	\$50,524,929	(\$425,496)	-0.8%	\$17,114,637	\$17,489,048	(\$374,411)	-2.1%	\$67,214,070	\$68,013,977	(\$799,907)	-1.2%
21	1/22/2011	\$53,143,646	\$51,372,320	\$1,771,326	3.4%	\$18,091,208	\$17,908,259	\$182,949	1.0%	\$71,234,854	\$69,280,579	\$1,954,275	2.8%
22	1/29/2011	\$54,096,128	\$51,826,337	\$2,269,791	4.4%	\$17,446,156	\$19,026,658	(\$1,580,502)	-8.3%	\$71,542,284	\$70,852,995	\$689,289	1.0%
23	2/5/2011	\$53,433,592	\$61,705,135	(\$8,271,543)	-13.4%	\$17,388,581	\$20,262,181	(\$2,873,600)	-14.2%	\$70,822,173	\$81,967,316	(\$11,145,143)	-13.6%
24	2/12/2011	\$60,277,094	\$57,505,343	\$2,771,751	4.8%	\$18,233,038	\$18,530,781	(\$297,743)	-1.6%	\$78,510,132	\$76,036,124	\$2,474,008	3.3%
25	2/19/2011	\$61,536,763	\$58,716,226	\$2,820,537	4.8%	\$19,387,518	\$19,257,668	\$129,850	0.7%	\$80,924,281	\$77,973,894	\$2,950,387	3.8%
26	2/26/2011	\$59,046,203	\$57,442,427	\$1,603,776	2.8%	\$20,054,404	\$20,116,011	(\$61,607)	-0.3%	\$79,100,607	\$77,558,438	\$1,542,170	2.0%
27	3/5/2011	\$60,537,060	\$61,437,946	(\$900,886)	-1.5%	\$19,478,807	\$21,859,136	(\$2,380,329)	-10.9%	\$80,015,867	\$83,297,082	(\$3,281,215)	-3.9%
28	3/12/2011	\$59,997,361	\$57,400,063	\$2,597,298	4.5%	\$19,601,658	\$19,979,112	(\$377,455)	-1.9%	\$79,599,019	\$77,379,175	\$2,219,844	2.9%
29	3/19/2011	\$57,835,554	\$54,714,545	\$3,121,009	5.7%	\$21,189,563	\$18,159,358	\$3,030,206	16.7%	\$79,025,117	\$72,873,903	\$6,151,215	8.4%
30	3/26/2011	\$57,911,940	\$54,229,797	\$3,682,143	6.8%	\$29,729,651	\$18,841,604	\$10,888,047	57.8%	\$87,641,591	\$73,071,401	\$14,570,190	19.9%
31	4/2/2011	\$60,407,139	\$56,585,236	\$3,821,903	6.8%	\$19,519,264	\$20,062,318	(\$543,055)	-2.7%	\$79,926,403	\$76,647,554	\$3,278,849	4.3%
32	4/9/2011	\$60,704,285	\$54,933,349	\$5,770,936	10.5%	\$19,455,317	\$21,849,425	(\$2,394,108)	-11.0%	\$80,159,602	\$76,782,774	\$3,376,829	4.4%
33	4/16/2011	\$57,663,398	\$54,850,820	\$2,812,578	5.1%	\$17,866,867	\$22,579,780	(\$4,712,913)	-20.9%	\$75,530,265	\$77,430,600	(\$1,900,335)	-2.5%
34	4/23/2011	\$56,740,216	\$53,419,824	\$3,320,392	6.2%	\$17,429,326	\$23,249,268	(\$5,819,942)	-25.0%	\$74,169,542	\$76,669,092	(\$2,499,550)	-3.3%
35	4/30/2011	\$58,042,011	\$53,739,981	\$4,302,030	8.0%	\$17,104,548	\$23,389,542	(\$6,284,995)	-26.9%	\$75,146,559	\$77,129,523	(\$1,982,965)	-2.6%
36	5/7/2011	\$66,509,159	\$55,268,772	\$11,240,387	20.3%	\$17,744,833	\$23,228,705	(\$5,483,872)	-23.6%	\$84,253,992	\$78,497,477	\$5,756,515	7.3%
37	5/14/2011	\$53,769,716	\$52,953,124	\$816,592	1.5%	\$17,783,942	\$20,813,409	(\$3,029,467)	-14.6%	\$71,553,658	\$73,766,533	(\$2,212,875)	-3.0%
38	5/21/2011	\$53,704,228	\$51,514,826	\$2,189,402	4.3%	\$18,623,882	\$21,691,660	(\$3,067,778)	-14.1%	\$72,328,110	\$73,206,486	(\$878,376)	-1.2%
39	5/28/2011	\$52,310,134	\$50,850,956	\$1,459,178	2.9%	\$19,115,921	\$22,028,914	(\$2,912,994)	-13.2%	\$71,426,055	\$72,879,870	(\$1,453,816)	-2.0%
40	6/4/2011	\$53,256,725	\$52,241,131	\$1,015,594	1.9%	\$18,462,603	\$17,819,550	\$643,053	3.6%	\$71,719,328	\$70,060,681	\$1,658,647	2.4%
41	6/11/2011	\$54,293,614	\$50,772,479	\$3,521,135	6.9%	\$17,213,019	\$16,820,362	\$392,658	2.3%	\$71,506,633	\$67,592,841	\$3,913,793	5.8%
42	6/18/2011	\$52,688,230	\$49,726,112	\$2,962,118	6.0%	\$17,534,413	\$16,959,981	\$574,433	3.4%	\$70,222,643	\$66,686,093	\$3,536,551	5.3%

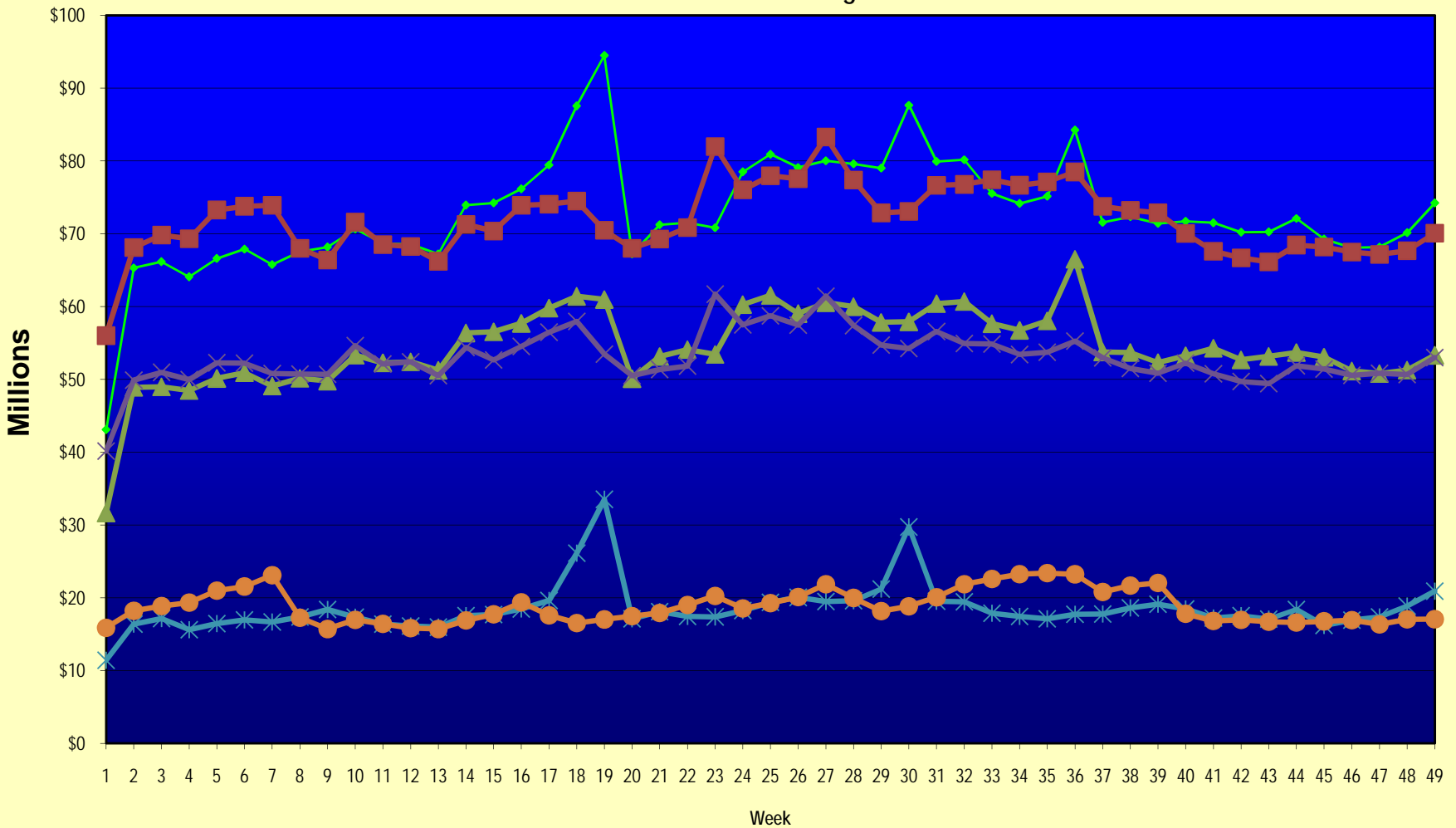
Note: Week 1 is not a full week of sales as this report is prepared on a Fiscal Year basis.

Texas Lottery Commission
Fiscal Year Over Year Change in Sales
Unaudited
FY 2011 Compared to FY 2010

Week	FY 2011 Week Ending	INSTANT TICKETS				ON-LINE GAMES				TOTAL SALES			
		FY 2011	FY 2010	Difference	% change - Cumulative Sales	FY 2011	FY 2010	Difference	% change - Cumulative Sales	FY 2011	FY 2010	Difference	% change - Cumulative Sales
43	6/25/2011	\$53,174,595	\$49,418,265	\$3,756,330	7.6%	\$17,086,937	\$16,721,308	\$365,630	2.2%	\$70,261,532	\$66,139,573	\$4,121,960	6.2%
44	7/2/2011	\$53,687,509	\$51,856,978	\$1,830,531	3.5%	\$18,406,785	\$16,599,581	\$1,807,204	10.9%	\$72,094,294	\$68,456,559	\$3,637,735	5.3%
45	7/9/2011	\$53,054,685	\$51,424,550	\$1,630,135	3.2%	\$16,211,989	\$16,765,950	(\$553,962)	-3.3%	\$69,266,674	\$68,190,500	\$1,076,174	1.6%
46	7/16/2011	\$51,161,290	\$50,568,531	\$592,759	1.2%	\$16,945,733	\$16,932,672	\$13,062	0.1%	\$68,107,023	\$67,501,203	\$605,821	0.9%
47	7/23/2011	\$50,807,750	\$50,839,051	(\$31,301)	-0.1%	\$17,362,213	\$16,336,723	\$1,025,491	6.3%	\$68,169,963	\$67,175,774	\$994,190	1.5%
48	7/30/2011	\$51,277,179	\$50,649,830	\$627,349	1.2%	\$18,870,764	\$17,033,288	\$1,837,477	10.8%	\$70,147,943	\$67,683,118	\$2,464,826	3.6%
49	8/6/2011	\$53,320,489	\$53,006,942	\$313,547	0.6%	\$20,922,034	\$17,061,563	\$3,860,472	22.6%	\$74,242,523	\$70,068,505	\$4,174,019	6.0%
50	8/13/2011		\$48,763,084				\$16,795,782				\$65,558,866		
51	8/20/2011		\$47,378,934				\$17,566,052				\$64,944,986		
52	8/27/2011		\$47,200,948				\$17,646,347				\$64,847,295		
53	8/31/2011		\$19,227,838				\$5,032,822				\$24,260,660		
Total thru Current Week		\$2,664,747,714	\$2,598,402,419	\$66,345,295	2.6%	\$906,679,694	\$920,355,262	(\$13,675,568)	-1.5%	\$3,571,427,408	\$3,518,757,681	\$52,669,727	1.5%
Fiscal Year Total		\$2,664,747,714	\$2,760,973,223			\$906,679,694	\$977,396,264			\$3,571,427,408	\$3,738,369,487		

** FY 2011 includes 4 days; FY 2010 includes 5 days

Texas Lottery Commission Fiscal Year Over Year Change in Sales



◆ Total Sales 2011
 ■ Total Sales 2010
 ▲ Instant Tickets 2011
 × Instant Tickets 2010
 ✱ On-Line Games 2011
 ● On-Line Games 2010

Note: Week 1 is not a full week of sales as this report is prepared on a Fiscal Year basis.

Texas Lottery Commission
Instant Tickets by Price Point
Sales, Prize Expense, Sales Contribution and Payout Percentage With Year Over Year Changes
Unaudited

Fiscal Year	Price Point	# of Active Games	FY Sales	% of Instant Ticket Sales	Year over Year Change in Sales	FY Prize Expense	Year over Year Change in Prize Expense	FY Sales Contribution	Year over Year Change in Contribution	Average Prize Payout %	Year over Year Change in Payout %
2010	\$1.00	41	215,116,248	8.3%		128,821,810		86,294,438		59.9%	-0.3%
thru	\$2.00	41	361,275,519	13.9%		236,605,293		124,670,226		65.5%	0.5%
8/7/2010	\$3.00	21	319,824,004	12.3%		210,309,252		109,514,752		65.8%	0.3%
	\$5.00	48	791,827,380	30.5%		538,593,944		253,233,436		68.0%	0.0%
	\$7.00	8	113,339,618	4.4%		77,063,105		36,276,513		68.0%	0.0%
	\$10.00	18	366,332,720	14.1%		257,119,069		109,213,651		70.2%	0.4%
	\$20.00	7	340,533,080	13.1%		252,564,434		87,968,646		74.2%	1.4%
	\$50.00	3	90,153,850	3.5%		69,928,026		20,225,824		77.6%	4.1%
Total		187	\$2,598,402,419			\$1,771,004,931		\$827,397,488		68.2%	0.6%
2011	\$1.00	37	194,851,301	7.3%		118,449,606		76,401,695		60.8%	1.5%
thru	\$2.00	37	370,502,744	13.9%		242,279,156		128,223,588		65.4%	-0.1%
8/6/2011	\$3.00	23	318,696,174	12.0%		209,041,617		109,654,557		65.6%	-0.2%
	\$5.00	50	827,947,995	31.1%		562,352,621		265,595,374		67.9%	-0.2%
	\$7.00	9	120,995,210	4.5%		82,265,786		38,729,424		68.0%	0.0%
	\$10.00	16	363,767,340	13.7%		258,296,719		105,470,621		71.0%	1.1%
	\$20.00	6	382,807,300	14.4%		285,116,269		97,691,031		74.5%	0.5%
	\$50.00	2	85,179,650	3.2%		66,159,103		19,020,547		77.7%	0.1%
Total		180	\$2,664,747,714			\$1,823,960,877		\$840,786,837		68.4%	0.4%
Variance	\$1.00	-4	-20,264,947		-9.4%	-10,372,204	-8.1%	-9,892,743	-11.5%	0.91%	
2011 to	\$2.00	-4	9,227,225		2.6%	5,673,863	2.4%	3,553,362	2.9%	-0.10%	
2010	\$3.00	2	-1,127,830		-0.4%	-1,267,635	-0.6%	139,805	0.1%	-0.17%	
	\$5.00	2	36,120,615		4.6%	23,758,678	4.4%	12,361,937	4.9%	-0.10%	
	\$7.00	1	7,655,592		6.8%	5,202,682	6.8%	2,452,910	6.8%	0.00%	
	\$10.00	-2	-2,565,380		-0.7%	1,177,649	0.5%	-3,743,029	-3.4%	0.82%	
	\$20.00	-1	42,274,220		12.4%	32,551,836	12.9%	9,722,384	11.1%	0.31%	
	\$50.00	-1	-4,974,200		-5.5%	-3,768,923	-5.4%	-1,205,277	-6.0%	0.10%	
Total		-7	\$66,345,295		2.6%	\$52,955,946	3.0%	\$13,389,349	1.6%	0.29%	

Texas Lottery Commission
Instant Tickets by Price Point
Sales, Prize Expense, Sales Contribution and Payout Percentage With Year Over Year Changes
 Unaudited

Notes - Instant Ticket Variances

		FY 2011		FY 2010		Difference
Sales	\$1 - \$7		\$1,832,993,424		\$1,801,382,769	\$31,610,655
Prize Exp.	\$1 - \$7		\$1,214,388,786		\$1,191,393,402	\$22,995,384
Sales Cont.	\$1 - \$7		\$618,604,638		\$609,989,367	\$8,615,271
Prize Exp. %	\$1 - \$7		66.3%		66.1%	0.1%
		FY 2011		FY 2010		Difference
Sales	\$10 - \$50		\$831,754,290		\$797,019,650	\$34,734,640
Prize Exp.	\$10 - \$50		\$609,572,091		\$579,611,529	\$29,960,562
Sales Cont.	\$10 - \$50		\$222,182,199		\$217,408,121	\$4,774,078
Prize Exp. %	\$10 - \$50		73.3%		72.7%	0.6%
		FY 2011		FY 2010		Difference
Sales	Instant		\$2,664,747,714		\$2,598,402,419	\$66,345,295
Prize Exp.	Instant		\$1,823,960,877		\$1,771,004,931	\$52,955,946
Sales Cont.	Instant		\$840,786,837		\$827,397,488	\$13,389,349
Prize Exp. %	Instant		68.4%		68.2%	0.3%

		FY 2011		FY 2010		Difference
Sales	\$1 - \$10		\$2,196,760,764		\$2,167,715,489	\$29,045,275
Prize Exp.	\$1 - \$10		\$1,472,685,505		\$1,448,512,472	\$24,173,033
Sales Cont.	\$1 - \$10		\$724,075,259		\$719,203,017	\$4,872,242
Prize Exp. %	\$1 - \$10		67.0%		66.8%	0.2%
		FY 2011		FY 2010		Difference
Sales	\$20 - \$50		\$467,986,950		\$430,686,930	\$37,300,020
Prize Exp.	\$20 - \$50		\$351,275,373		\$322,492,460	\$28,782,913
Sales Cont.	\$20 - \$50		\$116,711,577		\$108,194,470	\$8,517,107
Prize Exp. %	\$20 - \$50		75.1%		74.9%	0.2%
		FY 2011		FY 2010		Difference
Sales	Instant		\$2,664,747,714		\$2,598,402,419	\$66,345,295
Prize Exp.	Instant		\$1,823,960,877		\$1,771,004,931	\$52,955,946
Sales Cont.	Instant		\$840,786,837		\$827,397,488	\$13,389,349
Prize Exp. %	Instant		68.4%		68.2%	0.3%

Texas Lottery Commission
 Weekly Sales Summary
 & Comparison to Previous Week
 Unaudited

	Week Ending 08/06/2011		Week Ending 07/30/2011			
	<u>THIS WEEK</u>	% of Sales	<u>LAST WEEK</u>	% of Sales	<u>\$ change</u>	<u>% change</u>
Total Sales	<u>\$74,242,523</u>		<u>\$70,147,943</u>		<u>\$4,094,580</u>	5.84%
Instant Tickets	<u>\$53,320,489</u>	71.8%	<u>\$51,277,179</u>	73.1%	<u>\$2,043,310</u>	3.98%
Lotto	\$3,435,644	4.6%	\$3,253,912	4.6%	\$181,732	5.59%
Pick 3	\$5,293,699	7.1%	\$4,997,311	7.1%	\$296,388	5.93%
Pick 3 Sum It Up	\$103,615	0.1%	\$99,455	0.1%	\$4,160	4.18%
Cash Five	\$1,234,944	1.7%	\$1,199,135	1.7%	\$35,809	2.99%
Texas Two Step	\$957,327	1.3%	\$959,399	1.4%	-\$2,072	-0.22%
Mega Millions	\$3,271,611	4.4%	\$2,880,999	4.1%	\$390,612	13.56%
Megaplier	\$720,692	1.0%	\$646,988	0.9%	\$73,704	11.39%
Daily 4	\$1,163,787	1.6%	\$1,114,005	1.6%	\$49,782	4.47%
Daily 4 Sum It Up	\$85,076	0.1%	\$79,759	0.1%	\$5,317	6.67%
Powerball	\$3,902,193	5.3%	\$3,018,849	4.3%	\$883,344	29.26%
Power Play	\$753,448	1.0%	\$620,952	0.9%	\$132,496	21.34%
Total Online Sales	<u>\$20,922,034</u>		<u>\$18,870,764</u>		<u>\$2,051,270</u>	10.87%

* Totals may not sum due to rounding.

Texas Lottery Commission
Weekly Sales Summary
Unaudited

INSTANT TICKETS
TOP TEN SELLING GAMES

For the Week Ending : 08/06/11

Rank	Price Point	Game	Sales (Millions)
1	\$ 20	\$500,000,000 FRENZY	\$ 4.439
2	\$ 10	TEXAS LOTTERY BLACK, SERIES 3	\$ 3.191
3	\$ 5	20X THE MONEY	\$ 2.611
4	\$ 5	\$50,000 PLAYER'S CLUB	\$ 2.564
5	\$ 20	\$500,000,000 BLOCKBUSTER	\$ 2.356
6	\$ 5	\$100,000 FORTUNE	\$ 2.009
7	\$ 5	CASH EXTRAVAGANZA	\$ 1.723
8	\$ 3	BONUS CASHWORD	\$ 1.706
9	\$ 7	SCORCHING 7'S	\$ 1.514
10	\$ 50	ULTIMATE CASINO JACKPOT	\$ 1.504

Texas Lottery Commission
Prize Payout Tracking Report
Unaudited

Through Week Ending 08/06/11

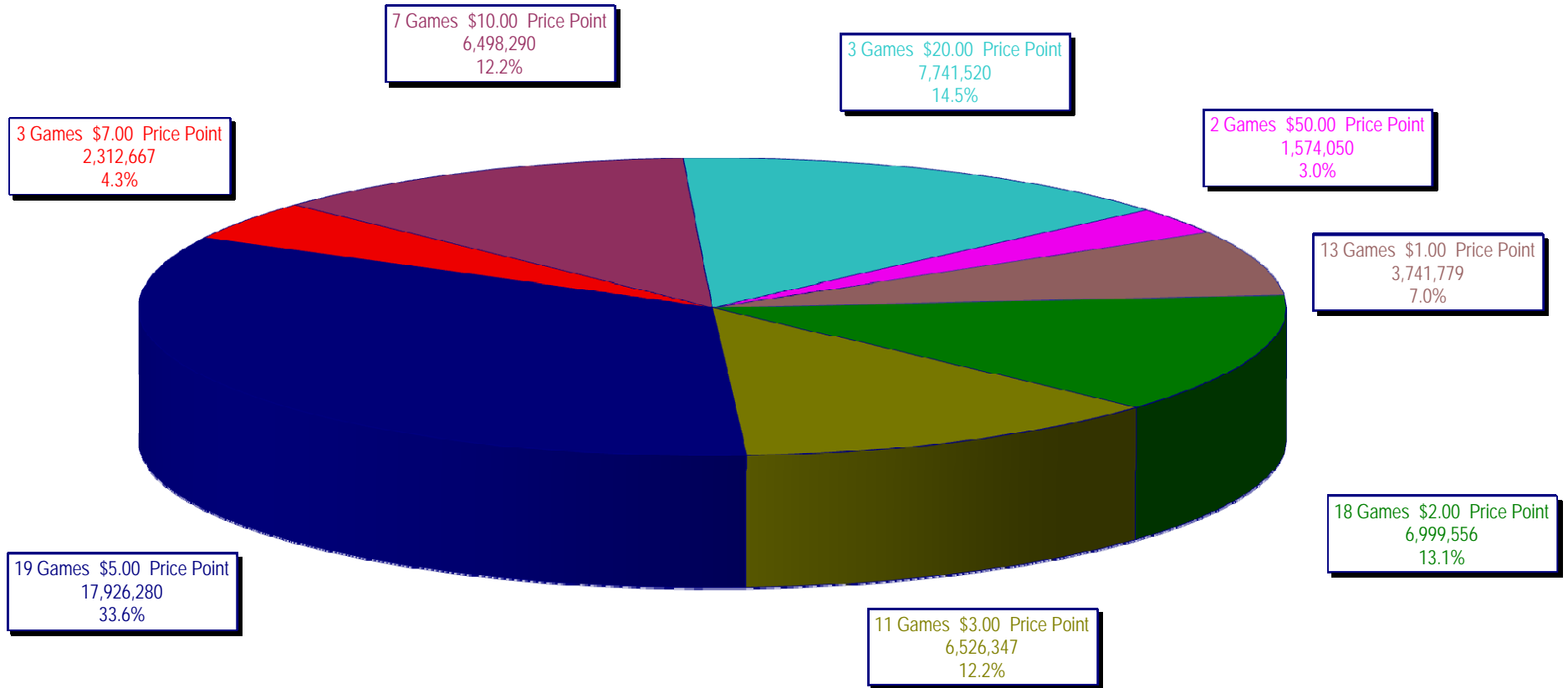
On-Line Sales

		FY Sales Through Week Ending 8/6/2011		FY Prize Expense Through Week Ending 8/6/2011	Actual* Prize Payout	Base Payout (Prize Pool)
Lotto	\$	159,962,171	\$	95,637,869	59.79%	50.00%
Pick 3		257,023,560		124,550,894	48.46%	50.00%
Pick 3 Sum It Up		5,202,650		2,346,862	45.11%	50.00%
Cash Five		60,472,978		30,236,527	50.00%	50.00%
Texas Two Step		47,123,564		23,890,413	50.70%	50.00%
Mega Millions		168,894,008		83,597,773	49.50%	50.00%**
Megaplier		35,409,954		16,849,436	47.58%	N/A
Daily 4		54,693,094		26,103,850	47.73%	50.00%
Daily 4 Sum It Up		4,142,757		1,874,298	45.24%	50.00%
Powerball		92,457,249		48,006,425	51.92%	50.00%**
Power Play		21,297,710		10,888,657	51.13%	N/A
Totals	\$	906,679,694	\$	463,983,003	51.17%	

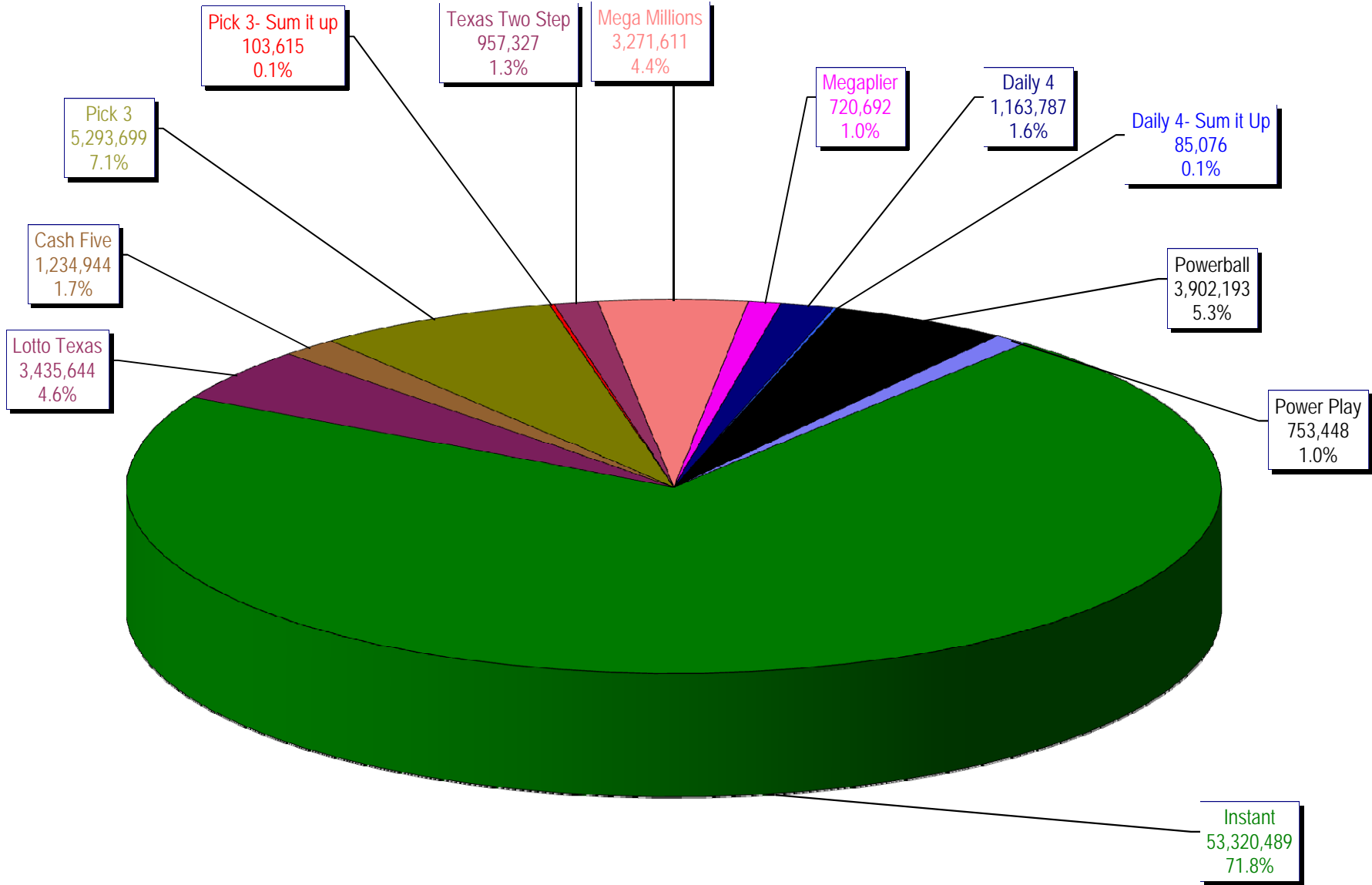
* Before Unclaimed Prizes

** Estimated; depends on # of guaranteed prizes won in Texas

Texas Lottery Commission
Instant Ticket Sales
For the Week Ending 08/06/2011
(Unaudited)



Texas Lottery Commission
All Game Sales
For the Week Ending 08/06/2011
(Unaudited)



Texas Lottery Commission - Weekly Sales Summary for FY 2011 (Unaudited)

Week Ended	Instant Games	New Games & Dates	Lotto Texas	Jackpot W S		Pick 3	Pick 3 Sum It Up	Cash Five	Texas Two Step	Jackpot M TH		Mega Millions	Jackpot T F		Megaplier	Daily 4	Daily 4 Sum It Up	Powerball	Jackpot W S		Power Play	Total	Per Cap.
9/4/2010	50,886,871	1251 (\$3,N); 1248 (\$5,N) - 08/30/10	3,238,939	4	5	5,133,180	99,799	1,255,137	907,736	275	375	2,216,782	12	16	525,380	1,081,186	85,150	1,543,448	34	47	376,802	67,350,410	2.72
9/11/2010	48,912,598	1147 (\$2,N) - 09/06/10 1346 (\$10,N) - 09/09/10	3,154,833	6	7	5,202,514	97,823	1,211,276	762,324	200	225	2,195,801	25	34	519,467	1,065,276	82,080	1,709,056	62	79	397,711	65,310,758	2.64
9/18/2010	48,988,241	1281 (\$1,N); 1246 (\$5,N) - 09/13/10	3,172,150	8	4	5,124,056	99,166	1,220,135	791,490	275	200	2,434,917	44	54	561,933	1,057,398	82,257	2,156,491	94	112	466,834	66,155,068	2.67
9/25/2010	48,471,310	1313 (\$2,N) - 09/20/10	3,103,083	5	6	4,971,566	95,270	1,212,530	772,370	225	200	2,067,112	12	16	496,860	1,036,994	79,412	1,430,615	20	25	358,001	64,095,123	2.59
10/2/2010	50,145,138	1234 (\$5,N) - 09/27/10	3,222,746	7	8	5,204,986	104,577	1,234,899	823,382	225	275	2,240,144	23	32	528,413	1,076,154	86,262	1,552,770	35	48	379,608	66,599,077	2.69
10/9/2010	50,918,591	0.00	3,280,138	9	10	5,314,323	117,023	1,225,735	1,029,730	375	500	2,412,454	41	51	555,007	1,071,718	84,446	1,512,464	60	20	371,925	67,893,554	2.74
10/16/2010	49,096,011	1284 (\$7,N); 1285 (\$20,N) - 10/11/10	3,296,700	11	12	5,063,257	106,357	1,194,375	925,090	650	200	2,715,784	61	72	594,908	1,018,024	78,845	1,326,299	25	34	342,265	65,757,915	2.65
10/23/2010	50,158,946	1286 (\$1,N); 1287 (\$5,N) - 10/18/10 1344 (\$1,N) - 10/20/10	3,335,547	13	14	5,032,655	106,948	1,199,133	825,573	225	275	3,316,557	86	101	682,142	1,012,732	78,498	1,428,095	46	59	356,580	67,533,406	2.73
10/30/2010	49,775,287	1243 (\$2,N) - 10/25/10 1345 (\$3,N) - 10/27/10	3,381,643	15	16	5,024,213	106,782	1,187,956	823,604	375	200	3,953,547	118	140	780,698	1,060,330	83,556	1,609,281	72	87	390,600	68,177,496	2.75
11/6/2010	53,337,848	1237 (\$1,N); 1290 (\$10,N) - 11/01/10	3,077,378	4	5	5,272,446	108,946	1,236,736	834,465	225	275	2,115,522	12	16	503,490	1,113,528	89,447	2,450,557	104	123	519,393	70,659,756	2.85
11/13/2010	52,285,479	1289 (\$3,N); 1291 (\$5,N) - 11/08/10	3,119,350	6	7	5,326,172	109,316	1,235,631	1,019,783	375	500	2,123,118	25	12	506,225	1,099,192	87,965	1,407,333	20	25	354,606	68,674,169	2.77
11/20/2010	52,424,036	1288 (\$2,N) - 11/15/10	3,162,292	8	9	5,124,861	104,372	1,234,396	795,125	200	225	2,132,040	16	25	513,725	1,064,835	84,612	1,543,690	35	50	378,075	68,562,058	2.77
11/27/2010	51,262,518	1280 (\$1,N); 1292 (\$5,N) - 11/22/10	3,149,608	10	11	4,923,209	98,827	1,167,907	823,798	275	375	2,138,067	34	42	504,292	1,022,779	81,580	1,659,305	64	79	397,704	67,229,593	2.71
12/4/2010	56,385,259	0	3,209,886	12	4	5,363,547	109,244	1,253,990	1,186,124	475	625	2,557,727	52	62	583,255	1,122,484	89,338	1,676,877	95	20	400,704	73,938,434	2.98
12/11/2010	56,540,048	1294 (\$1,N); 1282 (\$5,N) - 12/06/10	3,017,170	4	5	5,249,891	105,120	1,247,150	1,610,514	775	1,000	2,939,445	74	88	635,353	1,112,322	86,776	1,349,316	25	37	350,296	74,243,400	3.00
12/18/2010	57,699,991	1296 (\$3,N) - 12/13/10	3,109,357	6	7	5,252,987	103,488	1,245,192	1,210,115	1,200	200	3,933,829	104	123	784,466	1,102,301	86,146	1,297,373	20	25	340,030	76,165,273	3.07
12/25/2010	59,800,480	1299 (\$1,N); 1229 (\$5,N) - 12/20/10	3,068,654	8	9	5,231,226	107,702	1,204,856	868,156	225	275	5,351,969	145	168	985,293	1,104,373	87,086	1,295,059	35	46	331,397	79,436,251	3.21
1/1/2011	61,423,121	0	3,359,890	10	11	5,077,612	102,834	1,237,160	811,499	200	225	10,941,746	200	242	1,800,536	1,071,712	84,683	1,300,553	20	25	334,032	87,545,378	3.53
1/8/2011	60,976,653	1235 (\$2,N); 1244 (\$7,N) - 01/03/11	3,707,467	12	13	5,293,334	108,360	1,318,987	819,622	200	200	16,790,680	355	12	2,368,323	1,072,909	85,890	1,576,046	34	51	379,953	94,498,223	3.81
1/15/2011	50,099,433	1347 (\$1,N); 1295 (\$5,N) - 01/10/11	3,452,519	14	15	5,106,627	103,731	1,257,272	812,492	200	225	2,482,466	20	30	586,636	1,050,658	83,033	1,763,215	67	82	415,988	67,214,070	2.71
1/22/2011	53,143,646	1301 (\$2,N); 1276 (\$10,N) - 01/17/11	3,556,243	16	17	5,117,082	103,758	1,256,776	930,899	275	400	2,718,720	40	51	634,744	1,034,584	79,578	2,175,063	96	118	483,762	71,234,854	2.87
1/29/2011	54,096,128	0	3,571,489	18	19	5,146,945	107,882	1,247,311	785,350	200	200	3,092,586	63	77	693,500	1,048,424	80,444	1,327,163	20	25	345,062	71,542,284	2.89
2/5/2011	53,433,592	1306 (\$1,N); 1283 (\$5,N); 1343 (\$5,N) - 01/31/11	3,385,152	20	21	5,603,353	109,006	1,244,065	813,277	200	225	2,640,105	91	12	607,698	1,173,019	91,003	1,369,001	35	50	352,903	70,822,173	2.86
2/12/2011	60,277,094	1304 (\$1,N); 1305 (\$3,N) - 02/07/11	3,582,855	22	23	5,763,866	112,625	1,297,205	987,718	275	400	2,425,191	19	30	694,650	1,202,906	92,669	1,667,284	63	82	406,069	78,510,132	3.17
2/19/2011	61,536,763	1225 (\$2,N); 1307 (\$5,N) - 02/14/11	3,751,031	24	25	5,688,758	113,341	1,298,336	969,766	525	200	2,626,037	40	52	738,866	1,213,075	91,579	2,378,242	101	126	518,488	80,924,281	3.27
2/26/2011	59,046,203	1242 (\$2,N) - 02/24/11	3,765,647	26	27	5,524,278	111,516	1,280,405	820,818	200	225	2,850,877	64	76	801,464	1,168,816	88,186	3,027,283	155	184	615,115	79,100,607	3.19
3/5/2011	60,537,060	1308 (\$1,N); 1309 (\$5,N) - 02/28/11	3,823,961	28	29	5,818,485	112,110	1,320,942	984,506	275	400	3,533,405	88	105	781,530	1,243,800	95,453	1,397,856	20	25	366,759	80,015,867	3.23
3/12/2011	59,997,361	1143 (\$2,N); 1354 (\$20,N) - 03/07/11	3,462,888	30	4	5,481,752	105,643	1,306,146	838,723	200	225	4,418,415	127	151	913,343	1,166,246	87,860	1,447,580	40	54	373,062	79,599,019	3.21
3/19/2011	57,835,554	1311 (\$1,N); 1324 (\$10,N) - 03/14/11 1316 (\$3,N) - 03/16/11	3,074,648	5	6	5,425,746	105,298	1,260,180	832,212	300	200	6,109,530	172	201	1,166,150	1,137,789	88,670	1,592,883	67	85	396,458	79,025,117	3.19

Texas Lottery Commission - Weekly Sales Summary for FY 2011 (Unaudited)

Week Ended	Instant Games	New Games & Dates	Lotto Texas	Jackpot		Pick 3	Pick 3 Sum It Up	Cash Five	Texas Two Step	Jackpot		Mega Millions	Jackpot		Megaplier	Daily 4	Daily 4 Sum It Up	Powerball	Jackpot		Power Play	Total	Per Cap.
				W	S					M	TH		T	F					W	S			
3/26/2011	57,911,940	1314 (\$2,N); 1312 (\$5,N) - 03/21/11 1352 (\$10,N) - 03/23/11	3,312,554	7	8	5,315,680	105,979	1,259,070	852,479	225	275	12,687,665	244	312	2,117,764	1,148,054	85,066	2,330,335	101	125	515,006	87,641,591	3.54
4/2/2011	60,407,139	0	3,353,449	9	10	5,411,628	112,617	1,289,273	1,115,125	400	525	2,466,832	12	19	586,258	1,226,298	88,533	3,208,778	153	187	660,474	79,926,403	3.23
4/9/2011	60,704,285	1318 (\$5,N) - 4/04/11	3,398,173	11	12	5,422,068	116,376	1,296,927	857,484	200	225	2,805,743	30	44	641,656	1,222,047	87,737	3,002,564	218	20	604,543	80,159,602	3.23
4/16/2011	57,663,398	1239 (\$2,N); 1279 (\$7, N) - 4/11/11	3,329,910	13	14	5,351,959	113,810	1,263,310	868,052	300	200	3,080,722	58	72	681,897	1,195,501	84,770	1,518,994	27	43	377,943	75,530,265	3.05
4/23/2011	56,740,216	1319 (\$1,N); 1320 (\$3,N) - 4/18/11	3,232,781	15	4	5,335,212	114,532	1,256,394	910,919	225	300	2,384,544	12	19	566,256	1,179,656	85,193	1,920,964	56	72	442,876	74,169,542	2.99
4/30/2011	58,042,011	1298 (\$2,N); 1303 (\$5,N) - 4/25/11	3,053,156	5	6	5,442,397	116,872	1,260,947	924,301	425	200	2,623,478	29	40	606,891	1,185,364	84,929	1,440,233	20	25	365,981	75,146,559	3.03
5/7/2011	66,509,159	1323 (\$1, N) - 5/02/11	3,133,943	7	8	5,737,694	118,486	1,301,581	924,366	225	300	2,572,470	51	12	602,739	1,244,369	91,602	1,623,193	36	50	394,391	84,253,992	3.40
5/14/2011	53,769,716	1353 (\$1, N) - 5/09/11	3,124,023	9	10	5,459,652	111,766	1,267,026	1,240,350	425	575	2,354,524	18	27	568,704	1,174,400	83,938	1,952,228	65	81	447,332	71,553,658	2.89
5/21/2011	53,704,228	1321 (\$2, N); 1325 (\$5,N) - 5/16/11	3,189,399	11	12	5,341,542	112,224	1,258,164	1,719,817	750	975	2,177,060	12	16	524,292	1,145,665	82,245	2,536,867	97	120	536,607	72,328,110	2.92
5/28/2011	52,310,134	1351 (\$3, N) - 5/23/11	3,186,227	13	14	5,274,150	106,061	1,221,492	1,302,083	1,200	200	2,284,433	26	35	546,062	1,112,624	78,942	3,345,803	144	171	658,045	71,426,055	2.88
6/4/2011	53,256,725	1326 (\$1, N); 1327 (\$5, N) - 5/31/11	3,337,151	15	16	5,301,253	106,833	1,218,284	911,514	225	300	2,090,110	12	15	508,676	1,147,723	82,375	3,129,760	200	20	628,925	71,719,328	2.89
6/11/2011	54,293,614	0	3,353,656	17	18	5,264,262	104,514	1,232,635	1,305,311	425	600	2,316,616	24	33	555,266	1,140,748	83,185	1,480,740	25	20	376,087	71,506,633	2.89
6/18/2011	52,688,230	1328 (\$2, N); 1329 (\$7, N) - 06/13/11	3,135,852	19	4	5,155,370	104,041	1,210,913	1,609,298	775	1,000	2,614,322	42	53	599,817	1,157,158	88,417	1,483,683	25	36	375,542	70,222,643	2.83
6/25/2011	53,174,595	1330 (\$1, N); 1331 (\$5, N) - 06/20/11 1350 (\$5, N) - 06/22/11	2,861,974	5	4	5,072,083	102,299	1,200,371	877,099	200	225	2,990,575	64	76	659,570	1,122,363	82,900	1,706,532	48	63	411,172	70,261,532	2.84
7/2/2011	53,687,509	1315 (\$5, N) - 06/27/11	2,999,185	5	6	5,324,632	103,060	1,231,041	926,807	300	200	3,678,005	88	105	775,659	1,162,672	86,678	1,706,736	76	20	412,311	72,094,294	2.91
7/9/2011	53,054,685	1341 (\$3, N); 1332 (\$3, N); 1356 (10, N) - 07/05/11; 1355 (\$2, N) - 07/08/11	2,985,902	7	8	5,200,640	101,958	1,207,983	926,541	225	300	2,136,106	12	16	520,584	1,133,657	84,996	1,536,255	25	36	377,368	69,266,674	2.75
7/16/2011	51,161,290	1217 (\$3, N) - 07/14/11	3,111,449	9	10	5,093,820	102,289	1,221,365	990,008	450	200	2,389,432	24	33	568,950	1,146,964	81,984	1,811,914	48	61	427,559	68,107,023	2.70
7/23/2011	50,807,750	1334 (\$5, N); 1335(1, N) - 07/18/11	3,151,193	11	12	4,971,302	100,064	1,196,461	946,005	225	300	2,584,970	43	53	601,490	1,105,034	79,106	2,143,888	76	92	482,701	68,169,963	2.70
7/30/2011	51,277,179	0	3,253,912	13	14	4,997,311	99,455	1,199,135	959,399	450	200	2,880,999	63	74	646,988	1,114,005	79,759	3,018,849	111	133	620,952	70,147,943	2.78
8/6/2011	53,320,489	1293 (\$2, N); 1337 (\$5, N) - 08/01/11	3,435,644	15	16	5,293,699	103,615	1,234,944	957,327	225	300	3,271,611	85	99	720,692	1,163,787	85,076	3,902,193	160	180	753,448	74,242,523	2.94
weekly change	4.0%		5.6%			5.9%	4.2%	3.0%	-0.2%			13.6%			11.4%	4.5%	6.7%	29.3%			21.3%	5.8%	
	SALES		SALES			SALES	SALES	SALES	SALES			SALES			SALES	SALES	SALES	SALES			SALES	SALES	% of Sales
Startup to date	41,697,839,236		10,895,468,966			4,110,159,153	22,961,586	2,316,657,464	573,975,065			1,477,786,850			338,315,141	197,051,379	22,680,607	147,794,697			34,432,426	62,043,256,540	100.0%
Calendar Year to date	1,742,942,569		104,022,440			166,527,468	123,957	39,082,142	30,742,349			112,563,962			23,661,371	35,904,038	2,664,801	64,853,205			14,616,156	2,337,704,457	100.0%
Fiscal Year to date 2011	2,664,747,714		159,962,171			257,023,560	5,202,650	60,472,978	47,123,564			168,894,008			35,409,954	54,693,094	4,142,757	92,457,249			21,297,710	3,571,427,408	100.0%