



*WEEKLY SALES SUMMARY*

Unaudited

**Week Ending: 8/22/2015**

Texas Lottery Commission  
Fiscal Year to Date Sales Comparison  
Unaudited

Through the Week Ending 8/22/2015 (51 Weeks)

Sales by Game	FY 2013 *	FY 2014 **	FY 2015	\$ Change		% Change	
				FY 2015 to FY 2013	FY 2015 to FY 2014	FY 2015 to FY 2013	FY 2015 to FY 2014
Scratch Tickets	\$ 3,166,534,688	\$ 3,210,395,111	\$ 3,402,648,985	\$ 236,114,297	\$ 192,253,874	7.5%	6.0%
Lotto Texas	144,038,356	133,269,535	120,385,765	-23,652,591	-12,883,770	-16.4%	-9.7%
Lotto Extra	6,146,188	18,381,987	19,111,518	12,965,330	729,531	-	4.0%
Pick 3	264,128,731	249,516,530	246,027,670	-18,101,061	-3,488,861	-6.9%	-1.4%
Pick 3 Sum It Up	4,969,445	4,945,090	5,072,027	102,583	126,938	2.1%	2.6%
Cash Five	55,105,471	51,405,907	49,124,815	-5,980,656	-2,281,092	-10.9%	-4.4%
Texas Two Step	58,602,424	56,221,138	53,904,774	-4,697,650	-2,316,364	-8.0%	-4.1%
Mega Millions	109,503,210	181,980,298	146,217,695	36,714,485	-35,762,603	33.5%	-19.7%
Megaplier	25,165,887	39,779,641	34,654,076	9,488,189	-5,125,565	37.7%	-12.9%
Daily 4	73,574,224	81,668,531	84,727,733	11,153,509	3,059,202	15.2%	3.7%
Daily 4 Sum It Up	4,729,466	5,038,534	4,861,054	131,589	-177,480	2.8%	-3.5%
Powerball	294,133,763	194,801,410	197,553,840	-96,579,923	2,752,430	-32.8%	1.4%
Power Play	30,635,160	23,938,120	25,279,966	-5,355,194	1,341,846	-17.5%	5.6%
All or Nothing	62,666,393	45,430,292	36,951,854	-25,714,539	-8,478,438	-41.0%	-18.7%
Monopoly	-	-	1 2,656,310	2,656,310	2,656,310	-	-
<b>Total</b>	<b>\$ 4,299,933,404</b>	<b>\$ 4,296,772,123</b>	<b>\$ 4,429,178,081</b>	<b>\$ 129,244,677</b>	<b>\$ 132,405,958</b>	<b>3.0%</b>	<b>3.1%</b>

\* 2 extra days

\*\* 1 extra day

1 Monopoly sales were suspended after draw on 12/12/14

Texas Lottery Commission  
Fiscal Year to Date Cumulative Average Sales Comparison  
Unaudited

Through the Week Ending 8/22/2015 (51 Weeks)

Sales by Game	FY 2013	FY 2014	FY 2015
Scratch Tickets	\$ 8,845,069	\$ 8,992,703	\$ 9,558,003
Lotto Texas	402,342	373,304	338,162
Lotto Extra	*** 46,212	51,490	53,684
Pick 3	737,790	698,926	691,089
Pick 3 Sum It Up	13,881	13,852	14,247
Cash Five	153,926	143,994	137,991
Texas Two Step	163,694	157,482	151,418
Mega Millions	305,875	509,749	410,724
Megaplier	70,296	111,428	97,343
Daily 4	205,515	228,763	237,999
Daily 4 Sum It Up	13,211	14,114	13,655
Powerball	821,603	545,662	554,927
Power Play	85,573	67,054	71,011
All or Nothing	* 233,830	127,256	103,797
Monopoly	-	- **	48,297
<b>Total</b>	<b>\$ 12,098,815</b>	<b>\$ 12,035,776</b>	<b>\$ 12,482,346</b>

	thru 8/24/2013	thru 8/23/2014	thru 8/22/2015
	358 days	357 days	356 days
*	268 days		** 55 days
***	133 days		

Texas Lottery Commission  
Fiscal Year Over Year Change in Sales  
Unaudited  
FY 2015 Compared to FY 2014

			SCRATCH TICKETS				DRAW GAMES				TOTAL SALES			
FY 2015			% change -				% change -				% change -			
Week	Week	Ending	FY 2015	FY 2014	Difference	Cumulative Sales	FY 2015	FY 2014	Difference	Cumulative Sales	FY 2015	FY 2014	Difference	Cumulative Sales
1	9/6/2014 *		\$54,911,801	\$58,587,757	(\$3,675,956)	-6.3%	\$17,482,488	\$22,369,499	(\$4,887,011)	-21.8%	\$72,394,289	\$80,957,256	(\$8,562,967)	-10.6%
2	9/13/2014		\$61,436,533	\$57,135,931	\$4,300,602	7.5%	\$19,097,081	\$25,412,980	(\$6,315,899)	-24.9%	\$80,533,614	\$82,548,911	(\$2,015,297)	-2.4%
3	9/20/2014		\$60,959,234	\$59,018,194	\$1,941,040	3.3%	\$20,567,894	\$29,161,241	(\$8,593,347)	-29.5%	\$81,527,128	\$88,179,435	(\$6,652,307)	-7.5%
4	9/27/2014		\$59,710,056	\$57,927,984	\$1,782,072	3.1%	\$19,920,828	\$20,012,313	(\$91,485)	-0.5%	\$79,630,884	\$77,940,297	\$1,690,588	2.2%
5	10/4/2014		\$62,119,854	\$62,146,816	(\$26,962)	0.0%	\$18,531,421	\$20,043,557	(\$1,512,136)	-7.5%	\$80,651,275	\$82,190,373	(\$1,539,098)	-1.9%
6	10/11/2014		\$61,253,665	\$60,867,582	\$386,083	0.6%	\$18,985,332	\$19,480,962	(\$495,631)	-2.5%	\$80,238,997	\$80,348,544	(\$109,548)	-0.1%
7	10/18/2014		\$60,230,048	\$60,612,193	(\$382,145)	-0.6%	\$19,538,402	\$20,079,610	(\$541,209)	-2.7%	\$79,768,450	\$80,691,803	(\$923,354)	-1.1%
8	10/25/2014		\$62,384,112	\$59,548,277	\$2,835,835	4.8%	\$21,475,643	\$19,319,928	\$2,155,715	11.2%	\$83,859,755	\$78,868,205	\$4,991,550	6.3%
9	11/1/2014		\$63,404,713	\$61,710,236	\$1,694,477	2.7%	\$23,568,817	\$18,308,976	\$5,259,842	28.7%	\$86,973,530	\$80,019,212	\$6,954,319	8.7%
10	11/8/2014		\$65,486,719	\$61,668,594	\$3,818,125	6.2%	\$23,749,032	\$19,555,070	\$4,193,963	21.4%	\$89,235,751	\$81,223,664	\$8,012,088	9.9%
11	11/15/2014		\$61,745,521	\$60,057,025	\$1,688,496	2.8%	\$17,449,604	\$20,930,071	(\$3,480,468)	-16.6%	\$79,195,125	\$80,987,096	(\$1,791,972)	-2.2%
12	11/22/2014		\$66,353,583	\$63,118,266	\$3,235,317	5.1%	\$17,108,084	\$19,086,770	(\$1,978,687)	-10.4%	\$83,461,667	\$82,205,036	\$1,256,631	1.5%
13	11/29/2014		\$60,471,184	\$57,145,294	\$3,325,890	5.8%	\$17,303,129	\$20,434,618	(\$3,131,489)	-15.3%	\$77,774,313	\$77,579,912	\$194,401	0.3%
14	12/6/2014		\$66,648,696	\$59,883,783	\$6,764,913	11.3%	\$18,862,425	\$22,791,842	(\$3,929,417)	-17.2%	\$85,511,121	\$82,675,625	\$2,835,496	3.4%
15	12/13/2014		\$65,708,630	\$60,310,298	\$5,398,332	9.0%	\$18,649,598	\$35,859,153	(\$17,209,555)	-48.0%	\$84,358,228	\$96,169,451	(\$11,811,223)	-12.3%
16	12/20/2014		\$68,551,298	\$65,088,999	\$3,462,299	5.3%	\$19,051,100	\$46,832,745	(\$27,781,646)	-59.3%	\$87,602,398	\$111,921,744	(\$24,319,347)	-21.7%
17	12/27/2014		\$73,858,618	\$67,721,619	\$6,136,999	9.1%	\$20,006,357	\$18,218,091	\$1,788,266	9.8%	\$93,864,975	\$85,939,710	\$7,925,265	9.2%
18	1/3/2015		\$67,733,268	\$67,162,991	\$570,277	0.8%	\$21,355,167	\$19,140,745	\$2,214,422	11.6%	\$89,088,435	\$86,303,736	\$2,784,699	3.2%
19	1/10/2015		\$64,745,641	\$65,049,914	(\$304,273)	-0.5%	\$22,265,347	\$17,954,333	\$4,311,015	24.0%	\$87,010,988	\$83,004,247	\$4,006,742	4.8%
20	1/17/2015		\$64,015,166	\$62,731,830	\$1,283,336	2.0%	\$23,694,617	\$18,900,213	\$4,794,405	25.4%	\$87,709,783	\$81,632,043	\$6,077,741	7.4%
21	1/24/2015		\$62,569,156	\$59,085,886	\$3,483,270	5.9%	\$19,765,442	\$19,558,830	\$206,612	1.1%	\$82,334,598	\$78,644,716	\$3,689,882	4.7%
22	1/31/2015		\$68,001,588	\$64,099,096	\$3,902,492	6.1%	\$22,877,000	\$20,764,006	\$2,112,995	10.2%	\$90,878,588	\$84,863,102	\$6,015,487	7.1%
23	2/7/2015		\$75,677,650	\$67,717,353	\$7,960,297	11.8%	\$31,662,209	\$22,433,672	\$9,228,537	41.1%	\$107,339,859	\$90,151,025	\$17,188,834	19.1%
24	2/14/2015		\$75,368,712	\$69,949,998	\$5,418,714	7.7%	\$46,091,747	\$25,572,367	\$20,519,380	80.2%	\$121,460,459	\$95,522,365	\$25,938,094	27.2%
25	2/21/2015		\$74,833,076	\$72,422,148	\$2,410,928	3.3%	\$19,865,172	\$31,832,665	(\$11,967,493)	-37.6%	\$94,698,248	\$104,254,813	(\$9,556,565)	-9.2%
26	2/28/2015		\$69,918,013	\$72,883,830	(\$2,965,817)	-4.1%	\$19,735,352	\$21,827,140	(\$2,091,789)	-9.6%	\$89,653,365	\$94,710,970	(\$5,057,606)	-5.3%
27	3/7/2015		\$74,848,961	\$73,726,744	\$1,122,217	1.5%	\$19,946,068	\$22,528,352	(\$2,582,284)	-11.5%	\$94,795,029	\$96,255,096	(\$1,460,067)	-1.5%
28	3/14/2015		\$70,079,409	\$71,026,808	(\$947,399)	-1.3%	\$20,044,562	\$25,171,358	(\$5,126,797)	-20.4%	\$90,123,971	\$96,198,166	(\$6,074,196)	-6.3%
29	3/21/2015		\$70,368,686	\$69,174,125	\$1,194,561	1.7%	\$18,480,795	\$25,837,564	(\$7,356,769)	-28.5%	\$88,849,481	\$95,011,689	(\$6,162,208)	-6.5%
30	3/28/2015		\$70,280,600	\$66,886,917	\$3,393,683	5.1%	\$17,595,205	\$18,604,870	(\$1,009,665)	-5.4%	\$87,875,805	\$85,491,787	\$2,384,018	2.8%
31	4/4/2015		\$74,369,952	\$71,218,020	\$3,151,932	4.4%	\$18,378,917	\$19,883,667	(\$1,504,750)	-7.6%	\$92,748,869	\$91,101,687	\$1,647,182	1.8%
32	4/11/2015		\$67,416,817	\$65,970,648	\$1,446,169	2.2%	\$18,594,844	\$18,875,485	(\$280,641)	-1.5%	\$86,011,661	\$84,846,133	\$1,165,529	1.4%
33	4/18/2015		\$68,393,316	\$64,922,280	\$3,471,036	5.3%	\$18,104,632	\$19,723,048	(\$1,618,416)	-8.2%	\$86,497,948	\$84,645,328	\$1,852,620	2.2%
34	4/25/2015		\$70,078,182	\$60,578,829	\$9,499,353	15.7%	\$17,957,150	\$18,978,148	(\$1,020,998)	-5.4%	\$88,035,332	\$79,556,977	\$8,478,355	10.7%
35	5/2/2015		\$71,744,718	\$64,244,545	\$7,500,173	11.7%	\$18,961,113	\$19,029,632	(\$68,519)	-0.4%	\$90,705,831	\$83,274,177	\$7,431,655	8.9%
36	5/9/2015		\$73,415,978	\$65,679,029	\$7,736,949	11.8%	\$20,210,341	\$19,350,478	\$859,863	4.4%	\$93,626,319	\$85,029,507	\$8,596,812	10.1%
37	5/16/2015		\$72,152,109	\$63,627,971	\$8,524,138	13.4%	\$20,362,774	\$19,865,609	\$497,165	2.5%	\$92,514,883	\$83,493,580	\$9,021,303	10.8%
38	5/23/2015		\$70,399,950	\$61,902,451	\$8,497,499	13.7%	\$21,246,276	\$19,892,846	\$1,353,430	6.8%	\$91,646,226	\$81,795,297	\$9,850,929	12.0%
39	5/30/2015		\$68,547,554	\$61,264,953	\$7,282,601	11.9%	\$22,227,946	\$20,014,636	\$2,213,310	11.1%	\$90,775,500	\$81,279,589	\$9,495,911	11.7%
40	6/6/2015		\$71,254,006	\$64,019,948	\$7,234,058	11.3%	\$20,739,703	\$21,782,886	(\$1,043,184)	-4.8%	\$91,993,709	\$85,802,834	\$6,190,875	7.2%
41	6/13/2015		\$65,878,375	\$59,742,598	\$6,135,777	10.3%	\$17,216,403	\$19,736,748	(\$2,520,345)	-12.8%	\$83,094,778	\$79,479,346	\$3,615,432	4.5%
42	6/20/2015		\$66,658,742	\$59,010,863	\$7,647,879	13.0%	\$17,340,531	\$17,095,336	\$245,195	1.4%	\$83,999,273	\$76,106,199	\$7,893,074	10.4%

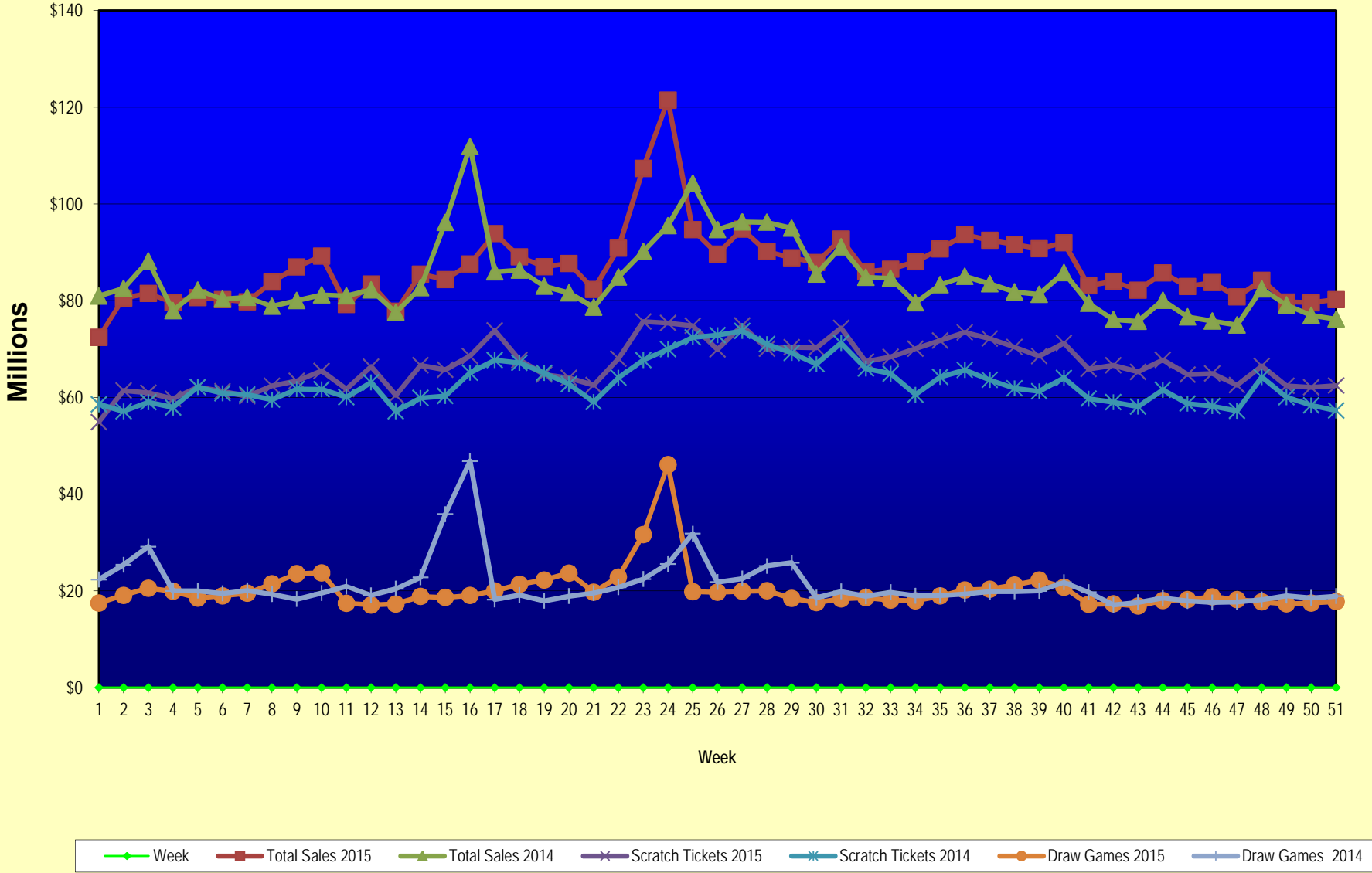
Texas Lottery Commission  
Fiscal Year Over Year Change in Sales  
Unaudited  
FY 2015 Compared to FY 2014

			SCRATCH TICKETS				DRAW GAMES				TOTAL SALES			
FY 2015			% change -				% change -				% change -			
Week	Week	Ending	FY 2015	FY 2014	Difference	Cumulative Sales	FY 2015	FY 2014	Difference	Cumulative Sales	FY 2015	FY 2014	Difference	Cumulative Sales
43	6/27/2015		\$65,282,276	\$58,102,191	\$7,180,085	12.4%	\$16,873,368	\$17,635,736	(\$762,368)	-4.3%	\$82,155,644	\$75,737,927	\$6,417,717	8.5%
44	7/4/2015		\$67,757,752	\$61,566,071	\$6,191,681	10.1%	\$18,007,540	\$18,521,529	(\$513,990)	-2.8%	\$85,765,292	\$80,087,600	\$5,677,692	7.1%
45	7/11/2015		\$64,718,254	\$58,729,674	\$5,988,580	10.2%	\$18,203,985	\$17,913,387	\$290,599	1.6%	\$82,922,239	\$76,643,061	\$6,279,179	8.2%
46	7/18/2015		\$64,957,977	\$58,202,035	\$6,755,942	11.6%	\$18,792,785	\$17,602,032	\$1,190,754	6.8%	\$83,750,762	\$75,804,067	\$7,946,696	10.5%
47	7/25/2015		\$62,541,241	\$57,220,932	\$5,320,309	9.3%	\$18,229,965	\$17,736,889	\$493,076	2.8%	\$80,771,206	\$74,957,821	\$5,813,385	7.8%
48	8/1/2015		\$66,468,460	\$64,207,294	\$2,261,166	3.5%	\$17,742,489	\$18,208,743	(\$466,255)	-2.6%	\$84,210,949	\$82,416,037	\$1,794,912	2.2%
49	8/8/2015		\$62,412,598	\$60,066,007	\$2,346,591	3.9%	\$17,331,374	\$19,022,945	(\$1,691,571)	-8.9%	\$79,743,972	\$79,088,952	\$655,020	0.8%
50	8/15/2015		\$62,089,389	\$58,374,809	\$3,714,580	6.4%	\$17,501,599	\$18,567,246	(\$1,065,647)	-5.7%	\$79,590,988	\$76,942,055	\$2,648,934	3.4%
51	8/22/2015		\$62,437,148	\$57,277,475	\$5,159,673	9.0%	\$17,779,458	\$18,916,460	(\$1,137,003)	-6.0%	\$80,216,606	\$76,193,935	\$4,022,671	5.3%
52	8/29/2015			\$61,884,256				\$17,283,925				\$79,168,181		
	8/31/2015 **			\$7,949,803				\$706,956				\$8,656,759		
Total thru Current Week			\$3,402,648,985	\$3,210,395,111	\$192,253,874	6.0%	\$1,026,529,096	\$1,086,377,012	(\$59,847,916)	-5.5%	\$4,429,178,081	\$4,296,772,123	\$132,405,958	3.1%
Fiscal Year Total			\$3,402,648,985	\$3,280,229,170			\$1,026,529,096	\$1,104,367,893			\$4,429,178,081	\$4,384,597,063		

\* FY 15 includes 6 days

\*\* FY 15 includes 2 days; FY 14 includes 1 day

### Texas Lottery Commission Fiscal Year Over Year Change in Sales



Note: Week 1 is not a full week of sales as this report is prepared on a Fiscal Year basis.

Texas Lottery Commission  
Scratch Tickets by Price Point  
Sales, Prize Expense, Sales Contribution and Payout Percentage With Year Over Year Changes  
Unaudited

Fiscal Year	Price Point	# of Active Games	FY Sales	% of Scratch Ticket Sales	Year over Year Change in Sales	FY Prize Expense	Year over Year Change in Prize Expense	FY Sales Contribution	Year over Year Change in Contribution	Average Prize Payout %	Year over Year Change in Payout %
2014	\$1.00	32	177,436,098	5.5%		106,308,370		71,127,728		59.9%	-1.3%
Through	\$2.00	41	364,698,122	11.4%		236,746,764		127,951,358		64.9%	-0.1%
8/23/2014	\$3.00	18	349,833,426	10.9%		229,548,496		120,284,930		65.6%	0.2%
	\$5.00	58	1,028,199,895	32.0%		698,363,185		329,836,710		67.9%	-0.2%
	\$10.00	18	620,047,410	19.3%		435,904,238		184,143,172		70.3%	-1.1%
	\$20.00	11	530,405,560	16.5%		397,127,114		133,278,446		74.9%	0.0%
	\$50.00	3	139,774,600	4.4%		108,562,792		31,211,808		77.7%	0.0%
<b>Total</b>		<b>181</b>	<b>\$3,210,395,111</b>			<b>\$2,212,560,960</b>		<b>\$997,834,151</b>		<b>68.9%</b>	<b>0.0%</b>
2015	\$1.00	25	160,839,847	4.7%		97,351,594		63,488,253		60.5%	1.0%
thru	\$2.00	37	340,875,674	10.0%		223,316,710		117,558,965		65.5%	1.0%
8/22/2015	\$3.00	16	340,493,769	10.0%		224,441,181		116,052,588		65.9%	0.4%
	\$5.00	56	1,038,408,605	30.5%		705,501,185		332,907,420		67.9%	0.0%
	\$10.00	20	722,682,780	21.2%		507,843,585		214,839,195		70.3%	-0.1%
	\$20.00	12	624,777,760	18.4%		468,423,366		156,354,394		75.0%	0.1%
	\$50.00	4	174,570,550	5.1%		135,715,204		38,855,346		77.7%	0.1%
<b>Total</b>		<b>170</b>	<b>\$3,402,648,985</b>			<b>\$2,362,592,824</b>		<b>\$1,040,056,161</b>		<b>69.4%</b>	<b>0.8%</b>
Variance	\$1.00	-7	-16,596,251		-9.4%	-8,956,777	-8.4%	-7,639,474	-10.7%	0.61%	
2015 to	\$2.00	-4	-23,822,448		-6.5%	-13,430,055	-5.7%	-10,392,393	-8.1%	0.60%	
2014	\$3.00	-2	-9,339,657		-2.7%	-5,107,316	-2.2%	-4,232,341	-3.5%	0.30%	
	\$5.00	-2	10,208,710		1.0%	7,138,000	1.0%	3,070,710	0.9%	0.02%	
	\$10.00	2	102,635,370		16.6%	71,939,347	16.5%	30,696,023	16.7%	-0.03%	
	\$20.00	1	94,372,200		17.8%	71,296,252	18.0%	23,075,948	17.3%	0.10%	
	\$50.00	1	34,795,950		24.9%	27,152,411	25.0%	7,643,539	24.5%	0.07%	
<b>Total</b>		<b>-11</b>	<b>\$192,253,874</b>		<b>6.0%</b>	<b>\$150,031,864</b>	<b>6.8%</b>	<b>\$42,222,010</b>	<b>4.2%</b>	<b>0.52%</b>	

Notes - Scratch Ticket Variances

Texas Lottery Commission  
Scratch Tickets by Price Point  
Sales, Prize Expense, Sales Contribution and Payout Percentage With Year Over Year Changes  
Unaudited

		FY 2015		FY 2014		Difference
Sales	\$1 - \$5	\$1,880,617,895		\$1,920,167,541		-\$39,549,646
Prize Exp.	\$1 - \$5	\$1,250,610,669		\$1,270,966,816		-\$20,356,147
Sales Cont.	\$1 - \$5	\$630,007,226		\$649,200,725		-\$19,193,499
Prize Exp. %	\$1 - \$5	66.5%		66.2%		0.3%
		FY 2015		FY 2014		Difference
Sales	\$10 - \$50	\$1,522,031,090		\$1,290,227,570		\$231,803,520
Prize Exp.	\$10 - \$50	\$1,111,982,155		\$941,594,144		\$170,388,011
Sales Cont.	\$10 - \$50	\$410,048,935		\$348,633,426		\$61,415,509
Prize Exp. %	\$10 - \$50	73.1%		73.0%		0.1%
		FY 2015		FY 2014		Difference
Sales	Scratch	\$3,402,648,985		\$3,210,395,111		\$192,253,874
Prize Exp.	Scratch	\$2,362,592,824		\$2,212,560,960		\$150,031,864
Sales Cont.	Scratch	\$1,040,056,161		\$997,834,151		\$42,222,010
Prize Exp. %	Scratch	69.4%		68.9%		0.5%

		FY 2015		FY 2014		Difference
Sales	\$1 - \$10	\$2,603,300,675		\$2,540,214,951		\$63,085,724
Prize Exp.	\$1 - \$10	\$1,758,454,255		\$1,706,871,054		\$51,583,200
Sales Cont.	\$1 - \$10	\$844,846,420		\$833,343,897		\$11,502,524
Prize Exp. %	\$1 - \$10	67.5%		67.2%		0.4%
		FY 2015		FY 2014		Difference
Sales	\$20 - \$50	\$799,348,310		\$670,180,160		\$129,168,150
Prize Exp.	\$20 - \$50	\$604,138,569		\$505,689,906		\$98,448,664
Sales Cont.	\$20 - \$50	\$195,209,741		\$164,490,254		\$30,719,486
Prize Exp. %	\$20 - \$50	75.6%		75.5%		0.1%
		FY 2015		FY 2014		Difference
Sales	Scratch	\$3,402,648,985		\$3,210,395,111		\$192,253,874
Prize Exp.	Scratch	\$2,362,592,824		\$2,212,560,960		\$150,031,864
Sales Cont.	Scratch	\$1,040,056,161		\$997,834,151		\$42,222,010
Prize Exp. %	Scratch	69.4%		68.9%		0.5%



Texas Lottery Commission  
**Weekly Sales Summary**  
**& Comparison to Previous Week**  
 Unaudited

	Week Ending 8/22/2015	% of Sales	Week Ending 8/15/2015	% of Sales	\$ change	% change
	<u>THIS WEEK</u>		<u>LAST WEEK</u>			
Total Sales	<u>\$80,216,606</u>		<u>\$79,590,988</u>		<u>\$625,618</u>	0.79%
Scratch Tickets	<u>\$62,437,148</u>	77.8%	<u>\$62,089,389</u>	78.0%	<u>\$347,759</u>	0.56%
Lotto	\$2,673,773	3.3%	\$2,659,034	3.3%	\$14,739	0.55%
Lotto Extra	\$444,367	0.6%	\$442,004	0.6%	\$2,363	0.53%
Pick 3	\$4,613,737	5.8%	\$4,463,481	5.6%	\$150,256	3.37%
Pick 3 Sum It Up	\$102,028	0.1%	\$93,825	0.1%	\$8,203	8.74%
Cash Five	\$916,043	1.1%	\$921,946	1.2%	-\$5,903	-0.64%
Texas Two Step	\$1,172,352	1.5%	\$1,433,091	1.8%	-\$260,739	-18.19%
Mega Millions	\$1,969,306	2.5%	\$1,871,484	2.4%	\$97,822	5.23%
Megaplier	\$518,453	0.6%	\$498,629	0.6%	\$19,824	3.98%
Daily 4	\$1,599,029	2.0%	\$1,576,953	2.0%	\$22,077	1.40%
Daily 4 Sum It Up	\$84,311	0.1%	\$82,479	0.1%	\$1,832	2.22%
Powerball	\$2,655,140	3.3%	\$2,453,406	3.1%	\$201,734	8.22%
Power Play	\$379,899	0.5%	\$356,910	0.4%	\$22,989	6.44%
All or Nothing	\$651,020	0.8%	\$648,358	0.8%	\$2,662	0.41%
Monopoly	\$0	0.0%	\$0	0.0%	\$0	0.00%
Total Draw Game Sales	<u>\$17,779,458</u>		<u>\$17,501,599</u>		<u>\$277,859</u>	1.59%

\* Totals may not sum due to rounding.

Texas Lottery Commission  
Weekly Sales Summary  
Unaudited

SCRATCH TICKETS  
TOP TEN SELLING GAMES

For the Week Ending: 8/22/15

Rank	Price Point	Game	Sales (Millions)
1	\$ 10	\$10 SET FOR LIFE	\$ 4.574
2	\$ 5	\$5 SET FOR LIFE	\$ 3.743
3	\$ 20	100X THE CASH	\$ 3.503
4	\$ 20	\$500,000,000 CASH	\$ 3.269
5	\$ 10	TEXAS GOLD	\$ 2.696
6	\$ 50	DIAMOND DOLLARS	\$ 2.530
7	\$ 20	\$1,000,000 INSTANT CASHOUT	\$ 2.293
8	\$ 5	20X THE CASH	\$ 2.213
9	\$ 3	TEXAS LOTERIA	\$ 2.118
10	\$ 5	WIN IT ALL	\$ 1.920

Texas Lottery Commission  
Prize Payout Tracking Report  
Unaudited

Through the Week Ending: 8/22/15

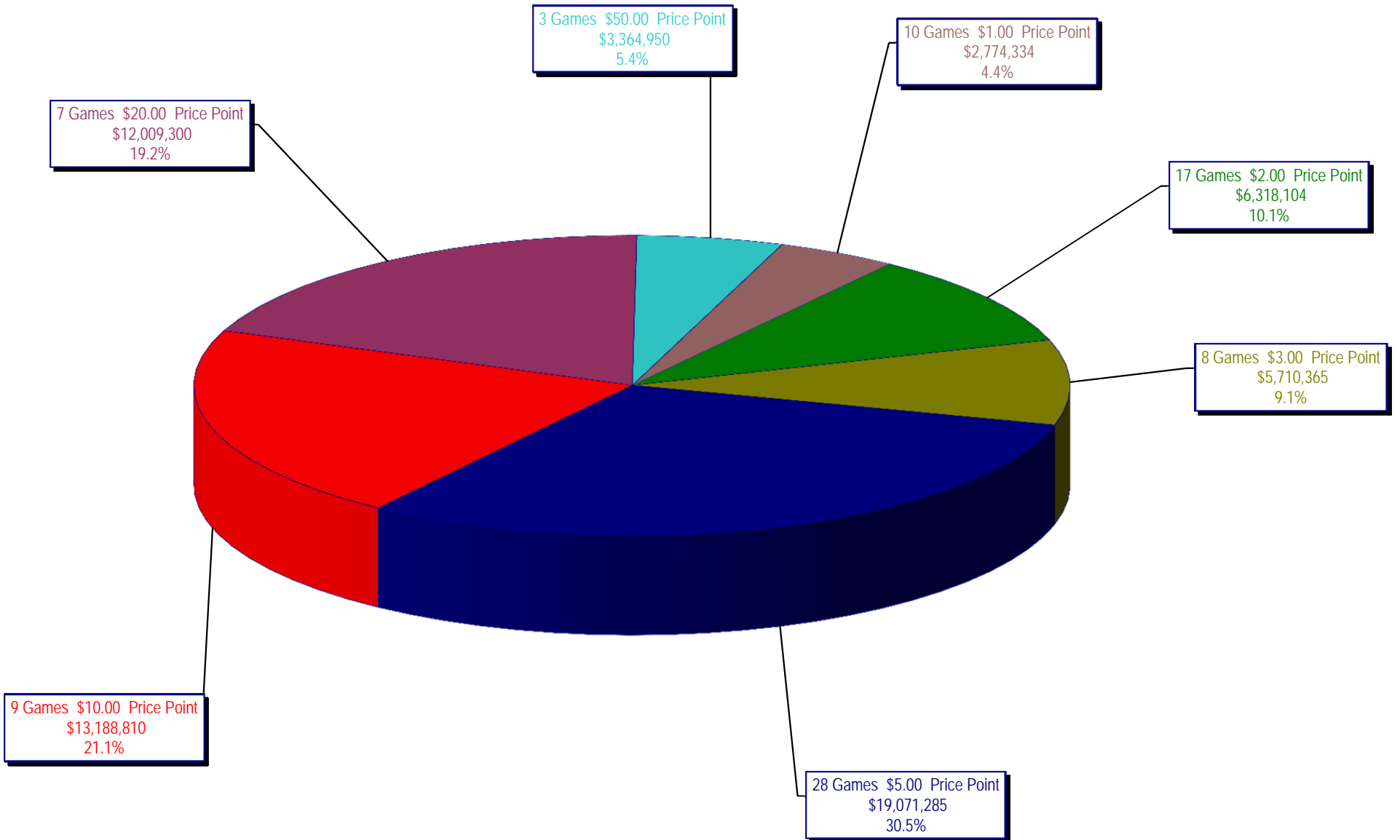
Draw Game Sales

	FY Sales Through Week Ending 8/22/2015	FY Prize Expense Through Week Ending 8/22/2015	Actual* Prize Payout	Base Payout (Prize Pool)
Lotto	\$ 120,385,765	\$ 60,819,259	50.52%	54.00%
Lotto Extra	19,111,518	10,532,212	55.11%	53.70%
Pick 3	246,027,670	114,386,320	46.49%	50.00%
Pick 3 Sum It Up	5,072,027	2,637,777	52.01%	50.00%
Cash Five	49,124,815	24,562,429	50.00%	50.00%
Texas Two Step	53,904,774	27,398,326	50.83%	50.00%
Mega Millions	146,217,695	74,632,127	51.04%	50.00%**
Megaplier	34,654,076	17,336,515	50.03%	N/A
Daily 4	84,727,733	37,846,900	44.67%	50.00%
Daily 4 Sum It Up	4,861,054	1,870,159	38.47%	50.00%
Powerball	197,553,840	98,864,935	50.04%	50.00%**
Power Play	25,279,966	12,651,928	50.05%	N/A
All or Nothing	36,951,854	20,783,648	56.25%	55.98%
Monopoly	2,656,310	3,617,028	136.17%	50.00%
<b>Totals</b>	<b>\$ 1,026,529,096</b>	<b>\$ 507,939,561</b>	<b>49.48%</b>	

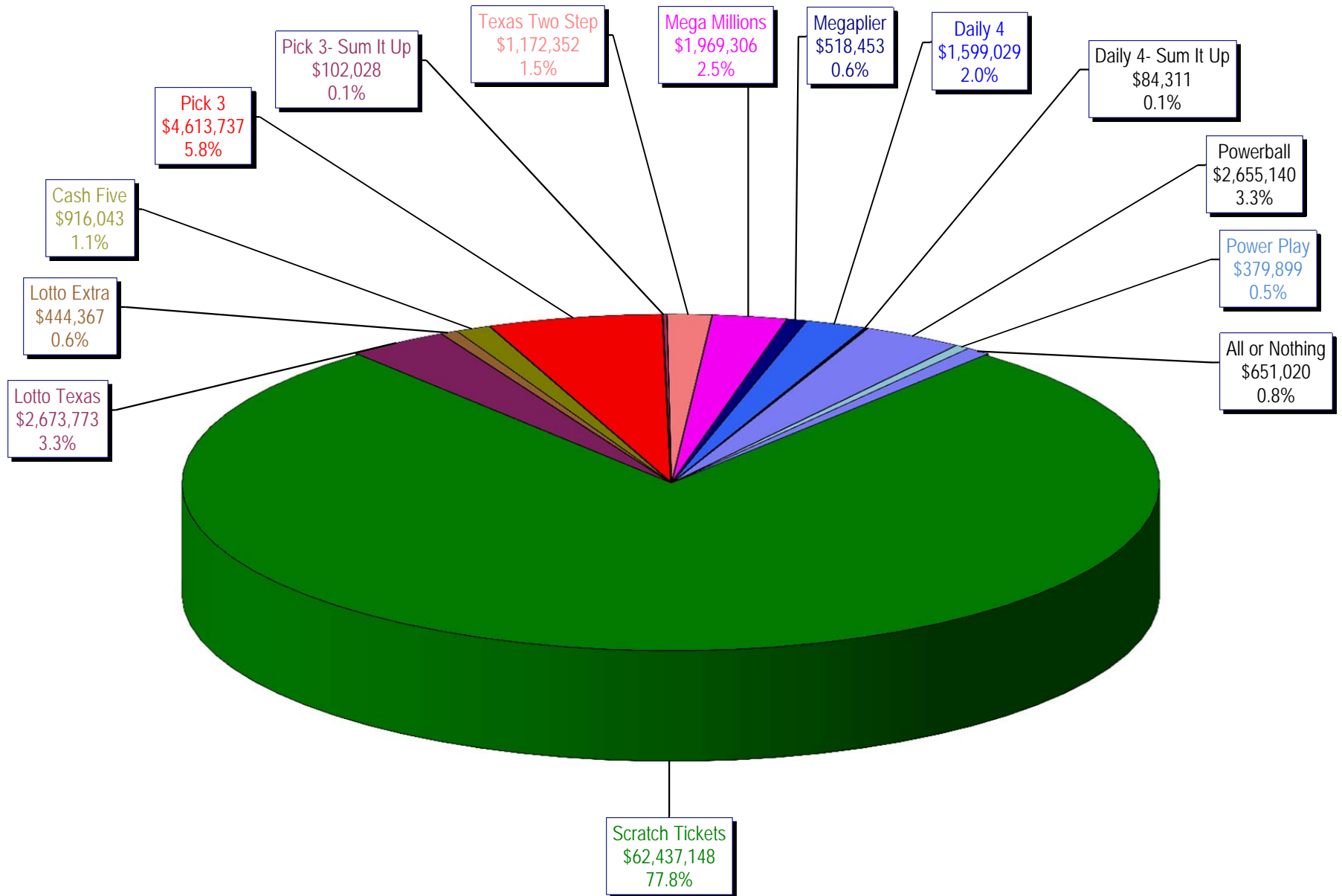
\* Before Unclaimed Prizes

\*\* Estimated; depends on # of guaranteed prizes won in Texas

Texas Lottery Commission  
Scratch Ticket Sales  
For the Week Ending 8/22/15  
(Unaudited)



**Texas Lottery Commission**  
**All Game Sales**  
**For the Week Ending 8/22/15**  
**(Unaudited)**



Texas Lottery Commission - Weekly Sales Summary for FY 2015 (Unaudited)

Week Ended	Scratch Tickets	New Games & Dates	Lotto Texas	Jackpot W	S	Lotto Extra	Pick 3	Pick 3 Sum It Up	Cash Five	Texas Two Step	Jackpot M	TH	Mega Millions	Jackpot T	F	Megaplier	Daily 4	Daily 4 Sum It Up	Powerball	Jackpot W	S	Power Play	All or Nothing	Monopoly	Jackpot F	Total	Per Cap.
9/06/2014	62,861,604	1589 (\$1.N); 1592 (\$5.N) - 9/1/14	2,281,237	6	6.25	341,232	4,827,600	92,305	958,777	918,635	225	300	1,847,432	25	33	475,313	1,640,023	104,626	3,465,202	100	110	450,723	786,340			81,051,048	3.11
9/13/2014	61,436,533	0	2,299,834	6.5	6.75	344,225	4,787,666	91,850	960,067	1,214,553	425	575	1,992,737	41	52	501,468	1,571,433	97,036	3,957,407	127	149	497,718	781,088			80,533,614	3.09
9/20/2014	60,959,234	1647 (\$2.N); 1619 (\$5.N) - 9/15/14	2,307,003	7	7.25	347,119	4,624,949	89,960	952,214	1,582,291	750	925	2,149,120	62	72	528,733	1,536,913	95,355	4,985,548	171	196	597,868	770,822			81,527,128	3.13
9/27/2014	59,710,056	0	2,357,199	7.5	8.25	353,734	4,540,964	89,289	938,745	1,244,640	1,175	200	2,417,365	83	93	579,889	1,512,957	91,998	4,478,698	225	40	544,723	770,628			79,630,884	3.06
10/4/2014	62,119,854	0	2,385,322	9	9.5	360,937	4,942,321	94,197	971,047	854,141	200	200	2,966,004	105	120	692,825	1,588,795	98,392	2,443,237	50	60	348,166	786,038			80,651,275	3.09
10/11/2014	61,253,665	1608 (\$1.N); 1653 (\$5.N); 1651 (\$10.N) - 10/6/14	2,363,624	10.25	11	355,219	4,893,634	94,926	959,659	935,385	225	300	3,310,874	136	150	748,248	1,580,735	94,717	2,522,774	70	80	356,145	769,392			80,238,997	3.08
10/18/2014	60,230,048	0	2,267,582	11.5	5	343,643	4,664,420	92,081	946,399	842,255	200	225	3,839,669	166	180	841,086	1,522,939	90,307	2,937,145	90	100	398,723	752,154			79,768,450	3.06
10/25/2014	62,384,112	1655 (\$1.N); 1652 (\$2.N); 1638 (\$10.N); 1637 (\$20.N) - 10/20/14	2,201,043	5.25	5.5	330,460	4,585,640	89,676	933,854	823,726	200	225	4,755,898	200	224	990,074	1,560,894	96,697	3,449,128	110	125	444,897	746,246	467,410	15	83,859,755	3.22
11/1/2014	63,404,713	1648 (\$3.N) - 10/31/14	2,289,864	5.75	6	346,139	4,620,420	87,141	925,312	993,957	300	425	5,950,540	252	284	1,199,010	1,554,893	93,945	3,903,664	142	159	494,803	733,770	375,360	18	86,973,530	3.34
11/8/2014	65,486,719	1600 (\$2.N); 1656 (\$5.N) - 11/3/14	2,269,671	6.25	6.5	345,144	4,823,896	92,098	958,406	1,336,742	550	700	4,908,320	321	15	1,013,337	1,669,728	97,535	4,560,744	178	203	561,387	753,046	358,980	21	89,235,751	3.42
11/15/2014	61,745,521	1649 (\$5.N) - 11/13/14	2,172,758	6.75	7	326,413	4,582,139	86,975	936,682	1,604,425	900	1,100	1,863,118	20	26	471,023	1,587,677	91,661	2,341,252	40	50	329,995	730,482	325,005	15	79,195,125	3.04
11/22/2014	66,353,583	1591 (\$2.N); 1659 (\$5.N); 1650 (\$5.N) - 11/17/14	2,199,718	7.25	7.5	334,361	4,639,564	87,768	933,490	851,281	200	225	2,013,021	35	43	503,022	1,588,603	91,235	2,470,536	60	70	341,955	728,436	325,095	18	83,461,667	3.20
11/29/2014	60,471,184	0	2,214,747	7.75	8.5	337,671	4,624,896	88,080	912,039	955,695	300	400	2,040,181	52	61	503,117	1,577,411	90,692	2,632,388	80	90	362,091	681,192	282,930	21	77,774,313	2.98
12/6/2014	66,648,696	1603 (\$1.N); 1646 (\$2.N); 1645 (\$5.N) - 12/01/14	2,368,094	9	9.75	359,684	5,203,649	97,575	987,770	1,292,696	550	725	2,397,206	70	80	577,206	1,786,014	106,986	2,312,972	40	50	333,011	759,472	280,090	25	85,511,121	3.28
12/13/2014	65,708,630	1613 (\$3.N) - 12/10/14	2,390,912	10.25	11	360,296	4,965,326	90,906	968,380	860,861	200	225	2,763,671	91	102	644,993	1,730,629	100,850	2,441,310	60	70	346,197	743,438	241,830	25	84,358,228	3.24
12/20/2014	68,551,298	1664 (\$2.N); 1665 (\$5.N); 1663 (\$10.N) - 12/15/14	2,403,956	11.5	12.25	365,207	4,980,735	94,034	972,605	840,763	200	200	3,150,078	113	125	726,548	1,722,159	99,838	2,593,858	80	90	364,498	736,822	0		87,602,398	3.36
12/27/2014	73,858,618	0	2,569,741	13	13.75	386,983	4,792,061	87,561	939,518	839,204	225	300	3,523,976	142	156	786,676	1,640,658	93,236	3,244,628	100	110	431,074	671,042	0		93,864,975	3.60
1/3/2015	67,733,268	0	2,579,932	14.5	5	391,775	4,873,207	92,090	972,634	794,716	200	225	4,061,330	172	188	895,771	1,677,541	97,009	3,730,196	120	131	487,253	701,714	0		89,088,435	3.42
1/10/2015	64,745,641	1661 (\$1.N); 1609 (\$3.N); 1666 (\$20.N) - 1/5/15	2,269,384	5.25	5.5	353,334	4,633,563	89,809	965,014	839,722	200	225	5,160,810	206	221	1,101,434	1,574,307	92,418	3,969,588	146	162	507,993	708,082	(110)		87,010,988	3.34
1/17/2015	64,015,166	0	2,321,110	5.75	6	362,124	4,713,502	94,319	961,349	870,940	300	200	5,796,919	246	270	1,219,766	1,636,351	95,924	4,374,663	176	194	557,630	690,082	(60)		87,709,783	3.37
1/24/2015	62,569,156	1657 (\$2.N); 1662 (\$5.N) - 1/19/15	2,172,603	6.25	6.5	340,335	4,515,824	94,602	932,895	880,883	225	300	2,000,036	15	20	513,701	1,607,911	97,318	5,280,704	208	230	641,822	686,808	0		82,334,598	3.16
1/31/2015	68,001,588	0	2,305,997	6.75	7	365,475	4,719,942	97,954	969,989	1,217,761	425	575	2,127,914	25	32	545,728	1,700,632	97,176	7,153,312	261	289	841,856	733,290	(25)		90,878,588	3.49
2/7/2015	75,677,650	1701 (\$1.N); 1670 (\$5.N); 1620 (\$10.N) - 2/2/15	2,493,246	7.25	7.5	392,502	5,114,958	105,675	1,009,912	1,511,180	725	925	2,378,853	40	49	604,450	1,791,305	103,366	13,888,215	317	380	1,485,755	782,868	(75)		107,339,859	4.12
2/14/2015	75,368,712	0	2,732,167	7.75	8.5	422,012	5,014,682	102,578	1,010,709	874,297	200	225	2,863,303	61	74	697,827	1,735,161	98,225	27,170,708	500	40	2,547,539	822,540	0		121,460,459	4.66
2/21/2015	74,833,076	1660 (\$2.N); 1612 (\$2.N); 1676 (\$5.N) - 2/16/15	2,500,395	9.25	10	391,610	5,114,765	110,692	1,011,829	942,295	300	200	3,027,808	88	100	721,729	1,782,129	104,637	2,964,066	50	60	418,243	774,980	(5)		94,698,248	3.63
2/28/2015	69,918,013	0	2,414,393	10.75	11.25	389,658	5,048,249	107,098	982,637	840,025	225	200	3,147,289	112	127	747,651	1,771,057	100,883	2,985,120	70	80	423,838	777,470	(15)		89,653,365	3.44
3/7/2015	74,848,961	1681 (\$1.N); 1658 (\$5.N) - 3/2/15	2,604,415	12	13	416,225	5,299,039	112,941	1,049,413	906,224	225	200	2,073,964	15	20	538,327	1,832,333	103,971	3,678,412	90	100	503,040	827,806	(40)		94,795,029	3.64
3/14/2015	70,079,409	0	2,547,123	13.8	14.5	407,021	5,156,740	109,709	1,024,207	955,233	225	300	2,077,720	25	33	536,912	1,798,910	100,491	4,017,992	119	137	535,845	776,660	0		90,123,971	3.46
3/21/2015	70,368,686	1667 (\$2.N); 1683 (\$3.N); 1703 (\$5.N); 1617 (\$20.N) - 3/16/15	2,587,215	15	15.75	410,628	4,927,739	105,711	1,003,124	988,911	450	200	2,194,003	42	51	557,110	1,726,997	95,151	2,723,788	40	50	394,888	765,530	0		88,849,481	3.41
3/28/2015	70,280,600	0	2,386,826	16.25	5	380,219	4,844,148	102,062	985,160	868,267	200	225	2,032,743	59	15	524,442	1,714,476	94,175	2,535,547	40	40	367,154	759,986	0		87,875,805	3.37

Texas Lottery Commission - Weekly Sales Summary for FY 2015 (Unaudited)

Week Ended	Scratch Tickets	New Games & Dates	Lotto Texas	Jackpot W	Jackpot S	Lotto Extra	Pick 3	Pick 3 Sum It Up	Cash Five	Texas Two Step	Jackpot M	Jackpot TH	Mega Millions	Jackpot T	Jackpot F	Megaplier	Daily 4	Daily 4 Sum It Up	Powerball	Jackpot W	Jackpot S	Power Play	All or Nothing	Monopoly	Jackpot F	Total	Per Cap.
4/4/2015	74,369,952	0	2,308,753	5.25	5.5	373,694	5,203,500	109,951	1,017,291	890,722	200	225	1,986,722	20	25	522,905	1,818,512	107,313	2,837,713	50	60	408,741	793,102	0		92,748,869	3.56
4/11/2015	67,416,817	1669 (\$1.N); 1674 (\$2.N); 1685 (\$5.N); 1707 (\$10.N) - 4/8/15	2,260,648	5.75	6	368,785	5,199,419	109,490	1,001,842	1,091,966	300	425	2,006,312	30	39	525,064	1,776,045	100,599	2,976,801	70	80	421,254	756,620	0		86,011,661	3.30
4/18/2015	68,393,316	0	2,277,281	6.25	6.5	374,417	5,070,797	107,974	990,790	1,052,087	600	200	2,169,304	47	55	555,180	1,754,350	97,212	2,539,428	40	50	374,938	740,874	0		86,497,948	3.32
4/25/2015	70,078,182	1684 (\$5.N); 1706 (\$10.N) - 4/20/15	2,262,087	6.75	7	370,876	5,028,724	118,227	968,731	962,012	225	300	2,346,852	65	74	585,227	1,726,601	92,983	2,424,825	40	50	358,519	711,486	0		88,035,332	3.38
5/2/2015	71,744,718	0	2,222,040	7.25	5	362,649	5,199,900	121,258	982,424	1,270,609	450	600	2,606,191	85	96	637,620	1,775,745	103,432	2,595,143	60	70	376,355	707,748	0		90,705,831	3.48
5/9/2015	73,415,978	1675 (\$1.N); 1686 (\$5.N); 1593 (\$50.N) - 5/4/15	2,190,666	5.25	5.5	358,908	5,207,575	123,165	982,347	1,770,599	775	1,000	3,094,898	110	126	728,892	1,759,116	103,250	2,782,676	80	90	399,302	708,948	0		93,626,319	3.59
5/16/2015	72,152,109	0	2,199,372	5.75	6	366,840	4,862,743	109,254	971,794	1,305,149	1,250	200	3,495,767	140	159	807,301	1,718,053	101,269	3,269,568	100	110	457,531	698,134	0		92,514,883	3.55
5/23/2015	70,399,950	1672 (\$2.N); 1688 (\$5.N); 1704 (\$5.N); 1671 (\$20.N) - 5/18/15	2,225,308	6.25	6.5	369,516	4,782,325	106,019	967,908	971,436	225	300	4,206,607	173	194	947,603	1,677,575	96,493	3,697,319	121	138	500,821	697,348	0		91,646,226	3.52
5/30/2015	68,547,554	0	2,222,627	6.75	7	374,162	4,567,118	102,912	924,319	1,156,848	425	600	4,847,135	214	233	1,076,398	1,601,131	91,945	4,053,140	154	171	544,702	665,510	0		90,775,500	3.48
6/6/2015	71,254,006	1698 (\$3.N); 1709 (\$5.N) - 6/01/15	2,284,247	7.25	7.5	379,728	4,968,343	109,591	982,319	886,747	200	225	3,720,801	253	15	869,379	1,732,760	97,475	3,524,353	188	40	478,874	705,086	0		91,993,709	3.53
6/13/2015	65,878,375	0	2,208,028	7.75	8.75	365,228	4,720,171	103,425	953,573	1,093,289	300	450	1,978,921	20	26	527,753	1,621,376	90,873	2,504,581	50	60	367,387	681,798	0		83,094,778	3.19
6/20/2015	66,658,742	1680(\$1.N); 1705(\$2.N); 1673(\$5.N); 1690(\$5.N) - 6/15/15	2,242,113	9.25	9.75	375,741	4,608,173	100,196	945,710	1,027,125	600	200	2,083,633	35	44	553,303	1,602,123	90,709	2,657,366	70	80	382,712	671,628	0		83,999,273	3.22
6/27/2015	65,282,276	0	2,282,481	10.25	11.25	381,246	4,509,601	95,019	941,407	859,887	200	225	2,245,714	52	64	578,079	1,575,489	87,244	2,306,870	40	50	345,308	665,024	0		82,155,644	3.15
7/4/2015	67,757,752	0	2,353,443	12.00	12.75	394,236	4,876,081	103,977	963,626	904,015	300	200	2,472,706	74	84	636,473	1,668,738	91,480	2,489,057	60	70	372,313	681,396	0		85,765,292	3.29
7/11/2015	64,718,254	1710 (\$2.N); 1668 (\$5.N); 1607 (\$10.N) - 7/6/15	2,385,635	13.5	13.75	398,273	4,781,949	102,113	960,531	937,800	225	300	2,859,381	96	106	706,608	1,664,674	90,614	2,293,500	40	50	346,375	676,594	(60)		82,922,239	3.08
7/18/2015	64,957,977	0	2,392,139	14.75	15.75	398,625	4,667,390	97,419	939,029	1,222,930	450	600	3,222,371	123	140	767,643	1,612,165	85,167	2,371,064	60	70	351,688	665,156	0		83,750,762	3.11
7/25/2015	62,541,241	1712 (\$1.N); 1682 (\$2.N); 1687 (\$5.N) - 7/20/15 1714 (\$3.N) - 7/21/15	2,423,998	16	16.75	411,009	4,422,996	92,150	931,092	1,513,511	750	950	2,576,749	152	15	641,592	1,563,274	82,145	2,560,657	80	90	372,674	638,118	0		80,771,206	3.00
8/1/2015	66,468,460	0	2,523,821	17.25	18	419,755	4,567,453	96,120	927,014	853,334	200	225	1,894,596	20	25	512,136	1,577,517	83,570	3,190,531	100	110	442,667	653,976	0		84,210,949	3.12
8/8/2015	62,412,598	1691 (\$1.N); 1692 (\$2.N); 1693 (\$5.N); 1694 (\$10.N) - 8/3/15	2,620,468	18.75	19.5	434,174	4,750,719	99,318	949,196	1,113,903	300	450	1,814,609	15	20	491,040	1,647,885	87,493	2,311,260	40	50	343,372	667,938	0		79,743,972	2.96
8/15/2015	62,089,389	0	2,659,034	20.25	20.75	442,004	4,463,481	93,825	921,946	1,433,091	600	775	1,871,484	25	30	498,629	1,576,953	82,479	2,453,406	60	70	356,910	648,358	0		79,590,988	2.95
8/22/2015	62,437,148	1678 (\$5.N); 1679 (\$5.N); 1716 (\$10.N); 1713 (\$20.N) - 8/17/15	2,673,773	21.75	22.5	444,367	4,613,737	102,028	916,043	1,172,352	975	200	1,969,306	39	47	518,453	1,599,029	84,311	2,655,140	80	90	379,899	651,020	0		80,216,606	2.98
weekly change	0.6%		0.6%	0.5%	3.4%	8.7%			-0.6%	-18.2%			5.2%			4.0%	1.4%	2.2%	8.2%			6.4%	0.4%	0.0%		0.8%	
<b>SALES</b>			<b>SALES</b>			<b>SALES</b>	<b>SALES</b>	<b>SALES</b>	<b>SALES</b>	<b>SALES</b>	<b>SALES</b>	<b>SALES</b>	<b>SALES</b>	<b>SALES</b>	<b>SALES</b>	<b>SALES</b>	<b>SALES</b>	<b>SALES</b>	<b>SALES</b>	<b>SALES</b>	<b>SALES</b>	<b>SALES</b>	<b>SALES</b>	<b>SALES</b>	<b>SALES</b>	<b>SALES</b>	<b>% of Sales</b>
Calendar Year to date	2,289,326,910		79,667,839			12,964,761	162,566,204	3,482,056	32,490,307	35,502,322	32,490,307	35,502,322	92,263,557			22,421,886	56,513,795	3,178,104	140,997,627			17,837,996	23,919,088	(390)		2,973,132,062	100.0%
Fiscal Year to date 2015	3,402,648,985		120,385,765			19,111,518	246,027,670	5,072,027	49,124,815	53,904,774	49,124,815	53,904,774	146,217,695			34,654,076	84,727,733	4,861,054	197,553,840			25,279,966	36,951,854	2,656,310		4,429,178,081	100.0%
*Full week includes 1 day from FY14																											