



WEEKLY SALES SUMMARY

Unaudited

[Week Ending: 08/27/2011](#)

Texas Lottery Commission
Fiscal Year to Date Sales Comparison
Unaudited

Through the week ending 08/27/2011 (52 weeks)

Sales by Game	FY 2009 *	FY 2010 **	FY 2011	\$ Change		% Change	
				FY 2011 to FY 2009	FY 2011 to FY 2010 to	FY 2011 to FY 2009	FY 2011 to FY 2010
Instants	\$ 2,778,243,930	\$ 2,741,745,385	\$ 2,814,991,876	\$ 36,747,946	\$ 73,246,491	1.3%	2.7%
Lotto Texas	199,977,312	255,322,622	170,749,192	-29,228,120	-84,573,430	-14.6%	-33.1%
Pick 3	283,990,643	267,932,124	271,800,672	-12,189,971	3,868,549	-4.3%	1.4%
Pick 3 Sum It Up	5,897,576	5,326,808	5,496,827	-400,749	170,019	-6.8%	3.2%
Cash Five	70,464,724	65,834,189	64,101,208	-6,363,517	-1,732,982	-9.0%	-2.6%
Texas Two Step	50,798,204	48,646,588	50,489,957	-308,247	1,843,369	-0.6%	3.8%
Mega Millions	215,023,775	166,391,461	175,477,803	-39,545,972	9,086,342	-18.4%	5.5%
Megaplier	47,276,053	37,098,296	36,970,034	-10,306,019	-128,262	-21.8%	-0.3%
Daily 4	46,668,679	52,967,525	58,074,086	11,405,407	5,106,561	24.4%	9.6%
Daily 4 Sum It Up	5,398,632	4,756,859	4,388,079	-1,010,554	-368,780	-18.7%	-7.8%
Powerball	-	55,023,990	99,971,388	99,971,388	44,947,398	-	-
Power Play	-	13,062,981	22,884,092	22,884,092	9,821,111	-	-
Total	\$ 3,703,739,528	\$ 3,714,108,827	\$ 3,775,395,213	\$ 71,655,685	\$ 61,286,386	1.9%	1.7%

* 2 extra days ** 1 extra day

Texas Lottery Commission
 Fiscal Year to Date Cumulative Average Sales Comparison
 Unaudited

Through the week ending 08/27/2011 (52 weeks)

Sales by Game	FY 2009	FY 2010	FY 2011
Instant	\$ 7,653,565	\$ 7,573,882	\$ 7,797,761
Lotto Texas	550,902	705,311	472,989
Pick 3	782,343	740,144	752,910
Pick 3 Sum It Up	16,247	14,715	15,227
Cash Five	194,118	181,862	177,566
Texas Two Step	139,940	134,383	139,861
Mega Millions	592,352	459,645	486,088
Megaplier	130,237	102,481	102,410
Daily 4	128,564	146,319	160,870
Daily 4 Sum It Up	14,872	13,140	12,155
Powerball	-	262,019 *	276,929
Power Play	-	62,205 *	63,391
Total	\$ 10,203,139	\$ 10,396,107	\$ 10,458,158

thru 08/29/2009
363 days

thru 08/28/2010
362 days
*210 days

thru 08/27/11
361 days

Texas Lottery Commission
Fiscal Year Over Year Change in Sales
Unaudited
FY 2011 Compared to FY 2010

Week	FY 2011 Week Ending	INSTANT TICKETS				ON-LINE GAMES				TOTAL SALES			
		FY 2011	FY 2010	Difference	% change - Cumulative Sales	FY 2011	FY 2010	Difference	% change - Cumulative Sales	FY 2011	FY 2010	Difference	% change - Cumulative Sales
1	9/4/2010**	\$31,659,033	\$40,148,241	(\$8,489,208)	-21.1%	\$11,430,717	\$15,859,194	(\$4,428,478)	-27.9%	\$43,089,750	\$56,007,435	(\$12,917,686)	-23.1%
2	9/11/2010	\$48,912,598	\$49,896,100	(\$983,502)	-2.0%	\$16,398,160	\$18,206,315	(\$1,808,155)	-9.9%	\$65,310,758	\$68,102,415	(\$2,791,657)	-4.1%
3	9/18/2010	\$48,988,241	\$50,971,937	(\$1,983,696)	-3.9%	\$17,166,827	\$18,859,622	(\$1,692,795)	-9.0%	\$66,155,068	\$69,831,559	(\$3,676,491)	-5.3%
4	9/25/2010	\$48,471,310	\$49,975,243	(\$1,503,933)	-3.0%	\$15,623,813	\$19,345,435	(\$3,721,622)	-19.2%	\$64,095,123	\$69,320,678	(\$5,225,555)	-7.5%
5	10/2/2010	\$50,145,138	\$52,283,569	(\$2,138,431)	-4.1%	\$16,453,939	\$20,991,695	(\$4,537,756)	-21.6%	\$66,599,077	\$73,275,264	(\$6,676,187)	-9.1%
6	10/9/2010	\$50,918,591	\$52,238,261	(\$1,319,670)	-2.5%	\$16,974,963	\$21,547,439	(\$4,572,476)	-21.2%	\$67,893,554	\$73,785,700	(\$5,892,146)	-8.0%
7	10/16/2010	\$49,096,011	\$50,806,599	(\$1,710,588)	-3.4%	\$16,661,904	\$23,114,594	(\$6,452,690)	-27.9%	\$65,757,915	\$73,921,193	(\$8,163,278)	-11.0%
8	10/23/2010	\$50,158,946	\$50,731,592	(\$572,646)	-1.1%	\$17,374,460	\$17,274,411	\$100,049	0.6%	\$67,533,406	\$68,006,003	(\$472,598)	-0.7%
9	10/30/2010	\$49,775,287	\$50,684,853	(\$909,566)	-1.8%	\$18,402,209	\$15,710,720	\$2,691,489	17.1%	\$68,177,496	\$66,395,573	\$1,781,923	2.7%
10	11/6/2010	\$53,337,848	\$54,633,928	(\$1,296,080)	-2.4%	\$17,321,908	\$16,961,611	\$360,297	2.1%	\$70,659,756	\$71,595,539	(\$935,784)	-1.3%
11	11/13/2010	\$52,285,479	\$52,109,218	\$176,261	0.3%	\$16,388,690	\$16,407,349	(\$18,660)	-0.1%	\$68,674,169	\$68,516,567	\$157,602	0.2%
12	11/20/2010	\$52,424,036	\$52,427,881	(\$3,845)	0.0%	\$16,138,022	\$15,829,561	\$308,461	1.9%	\$68,562,058	\$68,257,442	\$304,616	0.4%
13	11/27/2010	\$51,262,518	\$50,519,477	\$743,041	1.5%	\$15,967,075	\$15,710,447	\$256,628	1.6%	\$67,229,593	\$66,229,924	\$999,669	1.5%
14	12/4/2010	\$56,385,259	\$54,376,448	\$2,008,811	3.7%	\$17,553,175	\$16,905,341	\$647,835	3.8%	\$73,938,434	\$71,281,789	\$2,656,646	3.7%
15	12/11/2010	\$56,540,048	\$52,654,632	\$3,885,416	7.4%	\$17,703,352	\$17,726,695	(\$23,343)	-0.1%	\$74,243,400	\$70,381,327	\$3,862,073	5.5%
16	12/18/2010	\$57,699,991	\$54,542,793	\$3,157,198	5.8%	\$18,465,282	\$19,379,751	(\$914,469)	-4.7%	\$76,165,273	\$73,922,544	\$2,242,730	3.0%
17	12/25/2010	\$59,800,480	\$56,482,042	\$3,318,438	5.9%	\$19,635,771	\$17,582,779	\$2,052,992	11.7%	\$79,436,251	\$74,064,821	\$5,371,430	7.3%
18	1/1/2011	\$61,423,121	\$57,952,304	\$3,470,817	6.0%	\$26,122,257	\$16,542,885	\$9,579,372	57.9%	\$87,545,378	\$74,495,189	\$13,050,189	17.5%
19	1/8/2011	\$60,976,653	\$53,471,476	\$7,505,177	14.0%	\$33,521,570	\$17,025,616	\$16,495,954	96.9%	\$94,498,223	\$70,497,092	\$24,001,131	34.0%
20	1/15/2011	\$50,099,433	\$50,524,929	(\$425,496)	-0.8%	\$17,114,637	\$17,489,048	(\$374,411)	-2.1%	\$67,214,070	\$68,013,977	(\$799,907)	-1.2%
21	1/22/2011	\$53,143,646	\$51,372,320	\$1,771,326	3.4%	\$18,091,208	\$17,908,259	\$182,949	1.0%	\$71,234,854	\$69,280,579	\$1,954,275	2.8%
22	1/29/2011	\$54,096,128	\$51,826,337	\$2,269,791	4.4%	\$17,446,156	\$19,026,658	(\$1,580,502)	-8.3%	\$71,542,284	\$70,852,995	\$689,289	1.0%
23	2/5/2011	\$53,433,592	\$61,705,135	(\$8,271,543)	-13.4%	\$17,388,581	\$20,262,181	(\$2,873,600)	-14.2%	\$70,822,173	\$81,967,316	(\$11,145,143)	-13.6%
24	2/12/2011	\$60,277,094	\$57,505,343	\$2,771,751	4.8%	\$18,233,038	\$18,530,781	(\$297,743)	-1.6%	\$78,510,132	\$76,036,124	\$2,474,008	3.3%
25	2/19/2011	\$61,536,763	\$58,716,226	\$2,820,537	4.8%	\$19,387,518	\$19,257,668	\$129,850	0.7%	\$80,924,281	\$77,973,894	\$2,950,387	3.8%
26	2/26/2011	\$59,046,203	\$57,442,427	\$1,603,776	2.8%	\$20,054,404	\$20,116,011	(\$61,607)	-0.3%	\$79,100,607	\$77,558,438	\$1,542,170	2.0%
27	3/5/2011	\$60,537,060	\$61,437,946	(\$900,886)	-1.5%	\$19,478,807	\$21,859,136	(\$2,380,329)	-10.9%	\$80,015,867	\$83,297,082	(\$3,281,215)	-3.9%
28	3/12/2011	\$59,997,361	\$57,400,063	\$2,597,298	4.5%	\$19,601,658	\$19,979,112	(\$377,455)	-1.9%	\$79,599,019	\$77,379,175	\$2,219,844	2.9%
29	3/19/2011	\$57,835,554	\$54,714,545	\$3,121,009	5.7%	\$21,189,563	\$18,159,358	\$3,030,206	16.7%	\$79,025,117	\$72,873,903	\$6,151,215	8.4%
30	3/26/2011	\$57,911,940	\$54,229,797	\$3,682,143	6.8%	\$29,729,651	\$18,841,604	\$10,888,047	57.8%	\$87,641,591	\$73,071,401	\$14,570,190	19.9%
31	4/2/2011	\$60,407,139	\$56,585,236	\$3,821,903	6.8%	\$19,519,264	\$20,062,318	(\$543,055)	-2.7%	\$79,926,403	\$76,647,554	\$3,278,849	4.3%
32	4/9/2011	\$60,704,285	\$54,933,349	\$5,770,936	10.5%	\$19,455,317	\$21,849,425	(\$2,394,108)	-11.0%	\$80,159,602	\$76,782,774	\$3,376,829	4.4%
33	4/16/2011	\$57,663,398	\$54,850,820	\$2,812,578	5.1%	\$17,866,867	\$22,579,780	(\$4,712,913)	-20.9%	\$75,530,265	\$77,430,600	(\$1,900,335)	-2.5%
34	4/23/2011	\$56,740,216	\$53,419,824	\$3,320,392	6.2%	\$17,429,326	\$23,249,268	(\$5,819,942)	-25.0%	\$74,169,542	\$76,669,092	(\$2,499,550)	-3.3%
35	4/30/2011	\$58,042,011	\$53,739,981	\$4,302,030	8.0%	\$17,104,548	\$23,389,542	(\$6,284,995)	-26.9%	\$75,146,559	\$77,129,523	(\$1,982,965)	-2.6%
36	5/7/2011	\$66,509,159	\$55,268,772	\$11,240,387	20.3%	\$17,744,833	\$23,228,705	(\$5,483,872)	-23.6%	\$84,253,992	\$78,497,477	\$5,756,515	7.3%
37	5/14/2011	\$53,763,976	\$52,953,124	\$816,852	1.5%	\$17,783,942	\$20,813,409	(\$3,029,467)	-14.6%	\$71,553,658	\$73,766,533	(\$2,212,875)	-3.0%
38	5/21/2011	\$53,704,228	\$51,514,826	\$2,189,402	4.3%	\$18,623,882	\$21,691,660	(\$3,067,778)	-14.1%	\$72,328,110	\$73,206,486	(\$878,376)	-1.2%
39	5/28/2011	\$52,310,134	\$50,850,956	\$1,459,178	2.9%	\$19,115,921	\$22,028,914	(\$2,912,994)	-13.2%	\$71,426,055	\$72,879,870	(\$1,453,816)	-2.0%
40	6/4/2011	\$53,256,725	\$52,241,131	\$1,015,594	1.9%	\$18,462,603	\$17,819,550	\$643,053	3.6%	\$71,719,328	\$70,060,681	\$1,658,647	2.4%
41	6/11/2011	\$54,293,614	\$50,772,479	\$3,521,135	6.9%	\$17,213,019	\$16,820,362	\$392,658	2.3%	\$71,506,633	\$67,592,841	\$3,913,793	5.8%
42	6/18/2011	\$52,688,230	\$49,726,112	\$2,962,118	6.0%	\$17,534,413	\$16,959,981	\$574,433	3.4%	\$70,222,643	\$66,686,093	\$3,536,551	5.3%

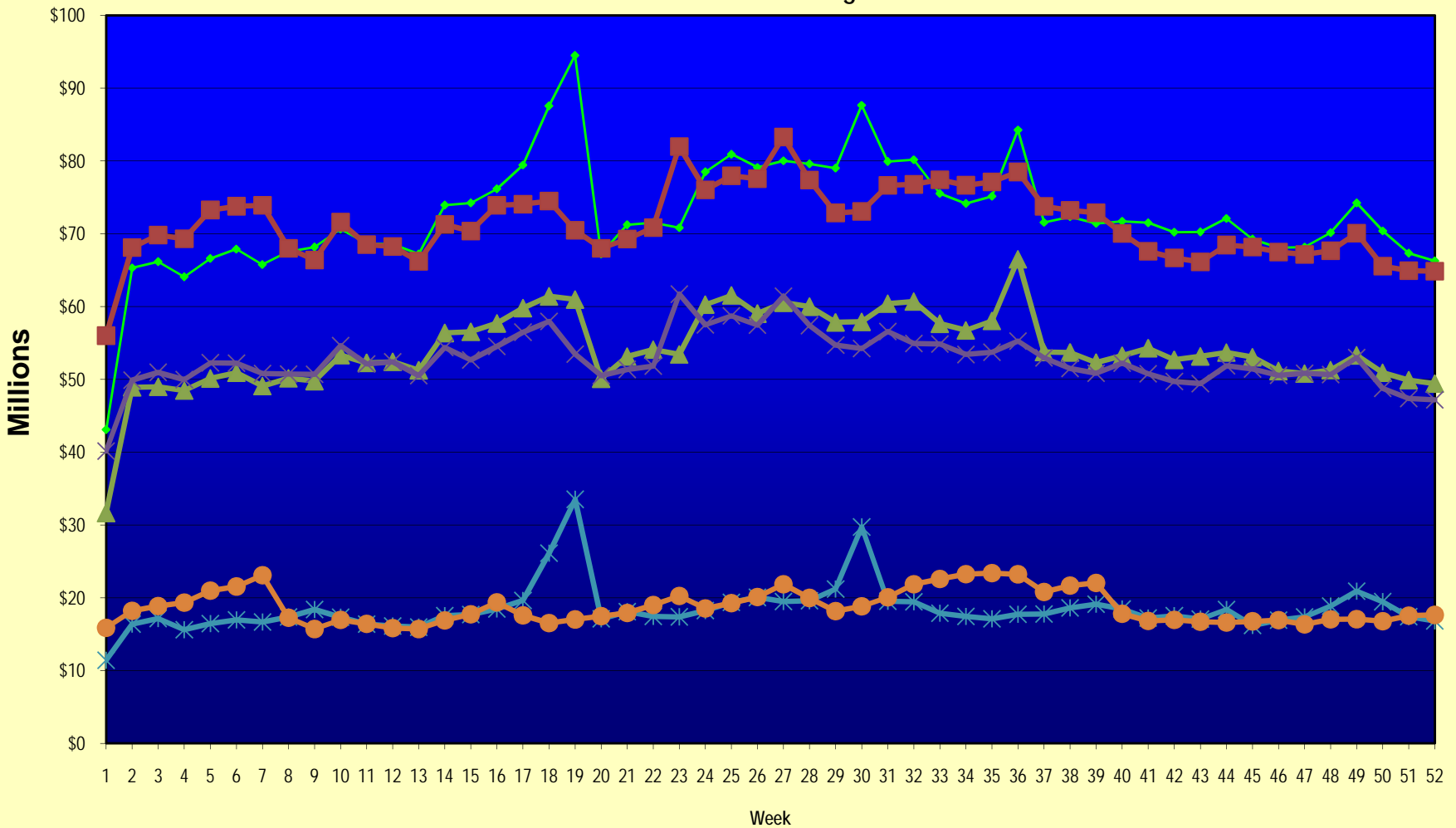
Note: Week 1 is not a full week of sales as this report is prepared on a Fiscal Year basis.

Texas Lottery Commission
Fiscal Year Over Year Change in Sales
Unaudited
FY 2011 Compared to FY 2010

Week	FY 2011 Week Ending	INSTANT TICKETS				ON-LINE GAMES				TOTAL SALES			
		FY 2011	FY 2010	Difference	% change - Cumulative Sales	FY 2011	FY 2010	Difference	% change - Cumulative Sales	FY 2011	FY 2010	Difference	% change - Cumulative Sales
43	6/25/2011	\$53,174,595	\$49,418,265	\$3,756,330	7.6%	\$17,086,937	\$16,721,308	\$365,630	2.2%	\$70,261,532	\$66,139,573	\$4,121,960	6.2%
44	7/2/2011	\$53,687,509	\$51,856,978	\$1,830,531	3.5%	\$18,406,785	\$16,599,581	\$1,807,204	10.9%	\$72,094,294	\$68,456,559	\$3,637,735	5.3%
45	7/9/2011	\$53,054,685	\$51,424,550	\$1,630,135	3.2%	\$16,211,989	\$16,765,950	(\$553,962)	-3.3%	\$69,266,674	\$68,190,500	\$1,076,174	1.6%
46	7/16/2011	\$51,161,290	\$50,568,531	\$592,759	1.2%	\$16,945,733	\$16,932,672	\$13,062	0.1%	\$68,107,023	\$67,501,203	\$605,821	0.9%
47	7/23/2011	\$50,807,750	\$50,839,051	(\$31,301)	-0.1%	\$17,362,213	\$16,336,723	\$1,025,491	6.3%	\$68,169,963	\$67,175,774	\$994,190	1.5%
48	7/30/2011	\$51,277,179	\$50,649,830	\$627,349	1.2%	\$18,870,764	\$17,033,288	\$1,837,477	10.8%	\$70,147,943	\$67,683,118	\$2,464,826	3.6%
49	8/6/2011	\$53,320,489	\$53,006,942	\$313,547	0.6%	\$20,922,034	\$17,061,563	\$3,860,472	22.6%	\$74,242,523	\$70,068,505	\$4,174,019	6.0%
50	8/13/2011	\$50,914,022	\$48,763,084	\$2,150,938	4.4%	\$19,467,124	\$16,795,782	\$2,671,342	15.9%	\$70,381,146	\$65,558,866	\$4,822,280	7.4%
51	8/20/2011	\$49,905,898	\$47,378,934	\$2,526,964	5.3%	\$17,419,045	\$17,566,052	(\$147,007)	-0.8%	\$67,324,943	\$64,944,986	\$2,379,958	3.7%
52	8/27/2011	\$49,424,242	\$47,200,948	\$2,223,294	4.7%	\$16,837,474	\$17,646,347	(\$808,873)	-4.6%	\$66,261,716	\$64,847,295	\$1,414,422	2.2%
53	8/31/2011		\$19,227,838				\$5,032,822				\$24,260,660		
Total thru Current Week		\$2,814,991,876	\$2,741,745,385	\$73,246,491	2.7%	\$960,403,337	\$972,363,442	(\$11,960,105)	-1.2%	\$3,775,395,213	\$3,714,108,827	\$61,286,386	1.7%
Fiscal Year Total		\$2,814,991,876	\$2,760,973,223			\$960,403,337	\$977,396,264			\$3,775,395,213	\$3,738,369,487		

** FY 2011 includes 4 days; FY 2010 includes 5 days

Texas Lottery Commission Fiscal Year Over Year Change in Sales



◆ Total Sales 2011
 ■ Total Sales 2010
 ▲ Instant Tickets 2011
 × Instant Tickets 2010
 ✱ On-Line Games 2011
 ● On-Line Games 2010

Note: Week 1 is not a full week of sales as this report is prepared on a Fiscal Year basis.

Texas Lottery Commission
Instant Tickets by Price Point
Sales, Prize Expense, Sales Contribution and Payout Percentage With Year Over Year Changes
Unaudited

Fiscal Year	Price Point	# of Active Games	FY Sales	% of Instant Ticket Sales	Year over Year Change in Sales	FY Prize Expense	Year over Year Change in Prize Expense	FY Sales Contribution	Year over Year Change in Contribution	Average Prize Payout %	Year over Year Change in Payout %
2010	\$1.00	42	224,691,791	8.2%		134,575,145		90,116,646		59.9%	-0.3%
thru	\$2.00	42	383,088,455	14.0%		250,872,972		132,215,483		65.5%	0.5%
8/28/2010	\$3.00	21	336,057,103	12.3%		220,973,877		115,083,226		65.8%	0.2%
	\$5.00	49	838,112,360	30.6%		570,178,322		267,934,038		68.0%	0.0%
	\$7.00	8	119,475,006	4.4%		81,235,248		38,239,758		68.0%	0.0%
	\$10.00	18	387,343,920	14.1%		272,131,965		115,211,955		70.3%	0.5%
	\$20.00	7	357,247,000	13.0%		264,859,684		92,387,316		74.1%	1.4%
	\$50.00	3	95,729,750	3.5%		74,257,239		21,472,511		77.6%	4.1%
Total		190	\$2,741,745,385			\$1,869,084,453		\$872,660,932		68.2%	0.6%
2011	\$1.00	38	205,411,703	7.3%		124,913,761		80,497,943		60.8%	1.5%
thru	\$2.00	37	390,765,780	13.9%		256,191,373		134,574,407		65.6%	0.1%
8/27/2011	\$3.00	23	337,092,825	12.0%		221,107,780		115,985,045		65.6%	-0.2%
	\$5.00	52	877,663,610	31.2%		596,159,818		281,503,792		67.9%	-0.2%
	\$7.00	9	126,963,438	4.5%		86,325,011		40,638,427		68.0%	0.0%
	\$10.00	17	383,535,320	13.6%		272,383,877		111,151,443		71.0%	1.1%
	\$20.00	7	403,974,100	14.4%		301,547,903		102,426,197		74.6%	0.7%
	\$50.00	2	89,585,100	3.2%		69,581,505		20,003,595		77.7%	0.1%
Total		185	\$2,814,991,876			\$1,928,211,027		\$886,780,849		68.5%	0.5%
Variance	\$1.00	-4	-19,280,088		-8.6%	-9,661,384	-7.2%	-9,618,704	-10.7%	0.92%	
2011 to	\$2.00	-5	7,677,325		2.0%	5,318,401	2.1%	2,358,924	1.8%	0.07%	
2010	\$3.00	2	1,035,722		0.3%	133,904	0.1%	901,818	0.8%	-0.16%	
	\$5.00	3	39,551,250		4.7%	25,981,496	4.6%	13,569,754	5.1%	-0.11%	
	\$7.00	1	7,488,432		6.3%	5,089,762	6.3%	2,398,670	6.3%	0.00%	
	\$10.00	-1	-3,808,600		-1.0%	251,912	0.1%	-4,060,512	-3.5%	0.76%	
	\$20.00	0	46,727,100		13.1%	36,688,218	13.9%	10,038,882	10.9%	0.51%	
	\$50.00	-1	-6,144,650		-6.4%	-4,675,734	-6.3%	-1,468,916	-6.8%	0.10%	
Total		-5	\$73,246,491		2.7%	\$59,126,574	3.2%	\$14,119,917	1.6%	0.33%	

Texas Lottery Commission
Instant Tickets by Price Point
Sales, Prize Expense, Sales Contribution and Payout Percentage With Year Over Year Changes
 Unaudited

Notes - Instant Ticket Variances

		FY 2011		FY 2010		Difference
Sales	\$1 - \$7		\$1,937,897,356		\$1,901,424,715	\$36,472,641
Prize Exp.	\$1 - \$7		\$1,284,697,743		\$1,257,835,565	\$26,862,178
Sales Cont.	\$1 - \$7		\$653,199,613		\$643,589,150	\$9,610,463
Prize Exp. %	\$1 - \$7		66.3%		66.2%	0.1%
		FY 2011		FY 2010		Difference
Sales	\$10 - \$50		\$877,094,520		\$840,320,670	\$36,773,850
Prize Exp.	\$10 - \$50		\$643,513,285		\$611,248,888	\$32,264,396
Sales Cont.	\$10 - \$50		\$233,581,235		\$229,071,782	\$4,509,454
Prize Exp. %	\$10 - \$50		73.4%		72.7%	0.6%
		FY 2011		FY 2010		Difference
Sales	Instant		\$2,814,991,876		\$2,741,745,385	\$73,246,491
Prize Exp.	Instant		\$1,928,211,027		\$1,869,084,453	\$59,126,574
Sales Cont.	Instant		\$886,780,849		\$872,660,932	\$14,119,917
Prize Exp. %	Instant		68.5%		68.2%	0.3%

		FY 2011		FY 2010		Difference
Sales	\$1 - \$10		\$2,321,432,676		\$2,288,768,635	\$32,664,041
Prize Exp.	\$1 - \$10		\$1,557,081,619		\$1,529,967,529	\$27,114,090
Sales Cont.	\$1 - \$10		\$764,351,057		\$758,801,106	\$5,549,951
Prize Exp. %	\$1 - \$10		67.1%		66.8%	0.2%
		FY 2011		FY 2010		Difference
Sales	\$20 - \$50		\$493,559,200		\$452,976,750	\$40,582,450
Prize Exp.	\$20 - \$50		\$371,129,408		\$339,116,924	\$32,012,484
Sales Cont.	\$20 - \$50		\$122,429,792		\$113,859,826	\$8,569,966
Prize Exp. %	\$20 - \$50		75.2%		74.9%	0.3%
		FY 2011		FY 2010		Difference
Sales	Instant		\$2,814,991,876		\$2,741,745,385	\$73,246,491
Prize Exp.	Instant		\$1,928,211,027		\$1,869,084,453	\$59,126,574
Sales Cont.	Instant		\$886,780,849		\$872,660,932	\$14,119,917
Prize Exp. %	Instant		68.5%		68.2%	0.3%

Texas Lottery Commission
Weekly Sales Summary
& Comparison to Previous Week
 Unaudited

	Week Ending 08/27/2011	% of Sales	Week Ending 08/20/2011	% of Sales	\$ change	% change
	<u>THIS WEEK</u>		<u>LAST WEEK</u>			
Total Sales	<u>\$66,261,716</u>		<u>\$67,324,943</u>		<u>-\$1,063,227</u>	-1.58%
Instant Tickets	<u>\$49,424,242</u>	74.6%	<u>\$49,905,898</u>	74.1%	<u>-\$481,656</u>	-0.97%
Lotto	\$3,652,754	5.5%	\$3,677,254	5.5%	-\$24,500	-0.67%
Pick 3	\$4,780,458	7.2%	\$4,967,886	7.4%	-\$187,428	-3.77%
Pick 3 Sum It Up	\$94,675	0.1%	\$99,123	0.1%	-\$4,448	-4.49%
Cash Five	\$1,197,779	1.8%	\$1,218,010	1.8%	-\$20,231	-1.66%
Texas Two Step	\$886,775	1.3%	\$1,178,480	1.8%	-\$291,705	-24.75%
Mega Millions	\$2,070,483	3.1%	\$2,353,286	3.5%	-\$282,803	-12.02%
Megaplier	\$497,455	0.8%	\$548,833	0.8%	-\$51,378	-9.36%
Daily 4	\$1,101,596	1.7%	\$1,142,730	1.7%	-\$41,135	-3.60%
Daily 4 Sum It Up	\$79,834	0.1%	\$82,266	0.1%	-\$2,433	-2.96%
Powerball	\$2,018,167	3.0%	\$1,737,216	2.6%	\$280,951	16.17%
Power Play	\$457,500	0.7%	\$413,962	0.6%	\$43,538	10.52%
Total Online Sales	<u>\$16,837,474</u>		<u>\$17,419,045</u>		<u>-\$581,571</u>	-3.34%

* Totals may not sum due to rounding.

Texas Lottery Commission
Weekly Sales Summary
Unaudited

INSTANT TICKETS
TOP TEN SELLING GAMES

For the Week Ending : 08/27/11

Rank	Price Point	Game	Sales (Millions)
1	\$ 20	\$500,000,000 FRENZY	3.898
2	\$ 5	GREEN & GOLD	3.220
3	\$ 10	SOLID GOLD	2.651
4	\$ 10	TEXAS LOTTERY BLACK, SERIES 3	2.317
5	\$ 20	\$500,000,000 BLOCKBUSTER	2.132
6	\$ 5	\$100,000 FORTUNE	2.108
7	\$ 3	BONUS CASHWORD	1.712
8	\$ 5	\$50,000 PLAYER'S CLUB	1.522
9	\$ 50	ULTIMATE CASINO JACKPOT	1.442
10	\$ 3	LOTERIA	1.381

Texas Lottery Commission
Prize Payout Tracking Report
Unaudited

Through Week Ending 08/27/11

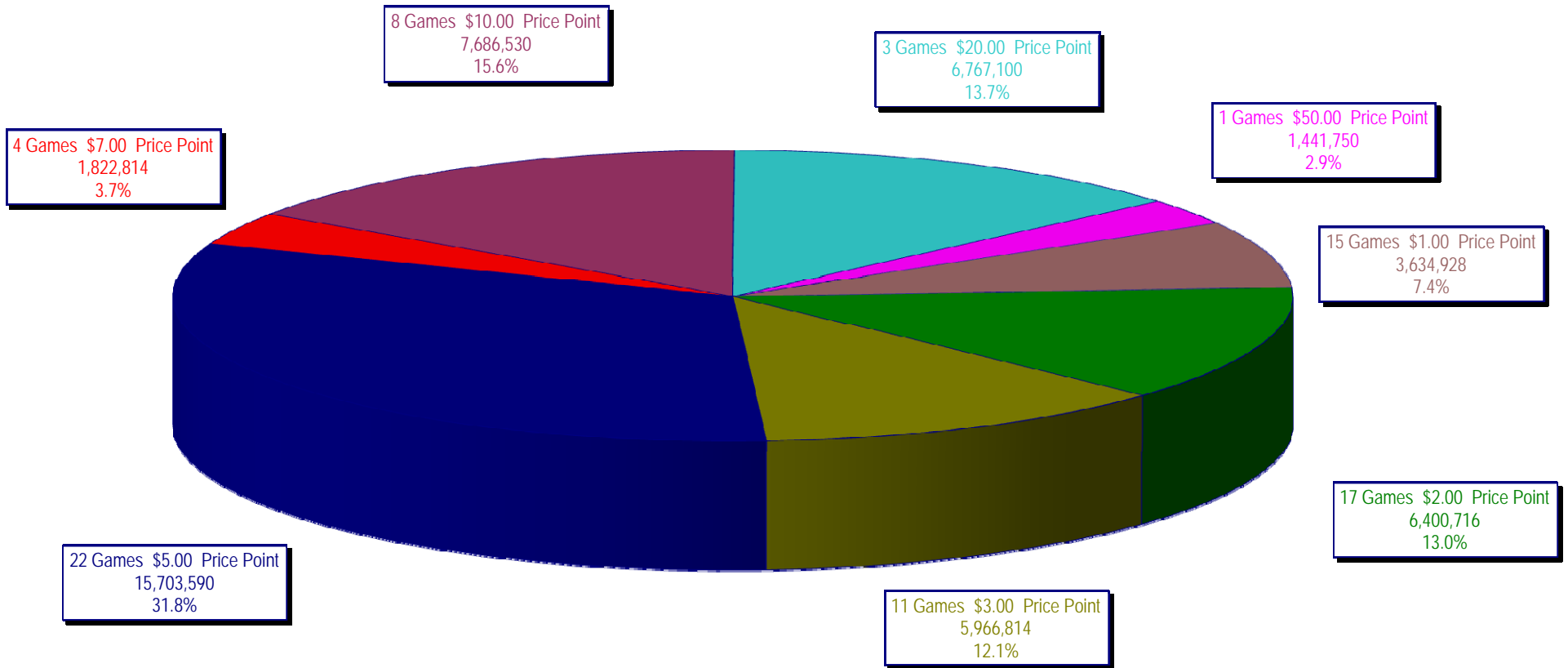
On-Line Sales

		FY Sales Through Week Ending 8/27/2011		FY Prize Expense Through Week Ending 8/27/2011	Actual* Prize Payout	Base Payout (Prize Pool)
Lotto	\$	170,749,192	\$	101,032,947	59.17%	50.00%
Pick 3		271,800,672		130,768,534	48.11%	50.00%
Pick 3 Sum It Up		5,496,827		2,472,672	44.98%	50.00%
Cash Five		64,101,208		32,049,642	50.00%	50.00%
Texas Two Step		50,489,957		25,552,006	50.61%	50.00%
Mega Millions		175,477,803		86,828,111	49.48%	50.00%**
Megaplier		36,970,034		17,241,287	46.64%	N/A
Daily 4		58,074,086		27,837,800	47.93%	50.00%
Daily 4 Sum It Up		4,388,079		1,980,413	45.13%	50.00%
Powerball		99,971,388		51,795,240	51.81%	50.00%**
Power Play		22,884,092		11,396,221	49.80%	N/A
Totals	\$	960,403,337	\$	488,954,872	50.91%	

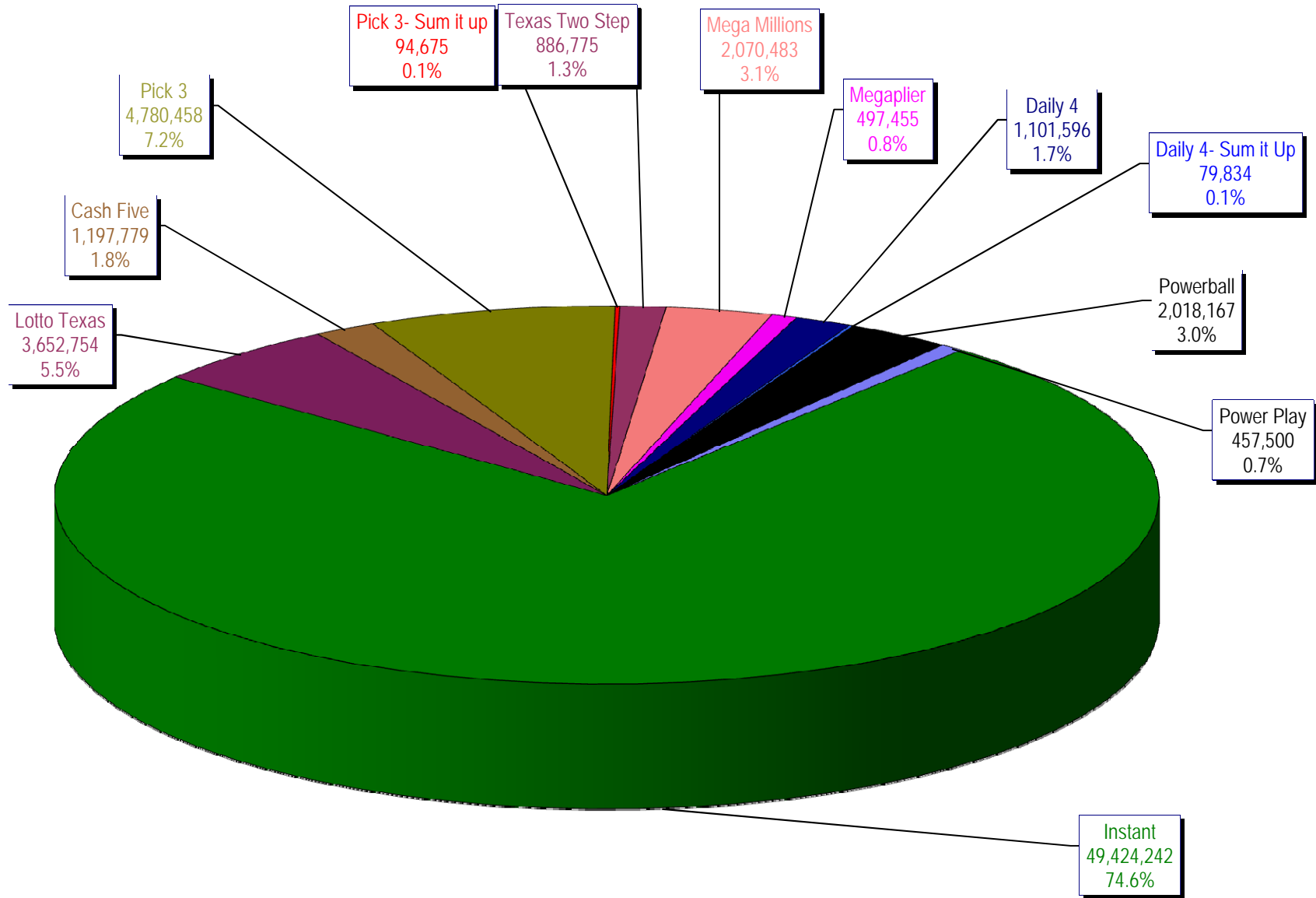
* Before Unclaimed Prizes

** Estimated; depends on # of guaranteed prizes won in Texas

Texas Lottery Commission
Instant Ticket Sales
For the Week Ending 08/27/2011
(Unaudited)



**Texas Lottery Commission
All Game Sales
For the Week Ending 08/27/2011
(Unaudited)**



Texas Lottery Commission - Weekly Sales Summary for FY 2011 (Unaudited)

Week Ended	Instant Games	New Games & Dates	Lotto Texas	Jackpot W	S	Pick 3	Pick 3 Sum It Up	Cash Five	Texas Two Step	Jackpot M	TH	Mega Millions	Jackpot T	F	Megaplier	Daily 4	Daily 4 Sum It Up	Powerball	Jackpot W	S	Power Play	Total	Per Cap.
9/4/2010	50,886,871	1251 (\$3,N); 1248 (\$5,N) - 08/30/10	3,238,939	4	5	5,133,180	99,799	1,255,137	907,736	275	375	2,216,782	12	16	525,380	1,081,186	85,150	1,543,448	34	47	376,802	67,350,410	2.72
9/11/2010	48,912,598	1147 (\$2,N) - 09/06/10 1346 (\$10,N) - 09/09/10	3,154,833	6	7	5,202,514	97,823	1,211,276	762,324	200	225	2,195,801	25	34	519,467	1,065,276	82,080	1,709,056	62	79	397,711	65,310,758	2.64
9/18/2010	48,988,241	1281 (\$1,N); 1246 (\$5,N) - 09/13/10	3,172,150	8	4	5,124,056	99,166	1,220,135	791,490	275	200	2,434,917	44	54	561,933	1,057,398	82,257	2,156,491	94	112	466,834	66,155,068	2.67
9/25/2010	48,471,310	1313 (\$2,N) - 09/20/10	3,103,083	5	6	4,971,566	95,270	1,212,530	772,370	225	200	2,067,112	12	16	496,860	1,036,994	79,412	1,430,615	20	25	358,001	64,095,123	2.59
10/2/2010	50,145,138	1234 (\$5,N) - 09/27/10	3,222,746	7	8	5,204,986	104,577	1,234,899	823,382	225	275	2,240,144	23	32	528,413	1,076,154	86,262	1,552,770	35	48	379,608	66,599,077	2.69
10/9/2010	50,918,591	0.00	3,280,138	9	10	5,314,323	117,023	1,225,735	1,029,730	375	500	2,412,454	41	51	555,007	1,071,718	84,446	1,512,464	60	20	371,925	67,893,554	2.74
10/16/2010	49,096,011	1284 (\$7,N); 1285 (\$20,N) - 10/11/10	3,296,700	11	12	5,063,257	106,357	1,194,375	925,090	650	200	2,715,784	61	72	594,908	1,018,024	78,845	1,326,299	25	34	342,265	65,757,915	2.65
10/23/2010	50,158,946	1286 (\$1,N); 1287 (\$5,N) - 10/18/10 1344 (\$1,N) - 10/20/10	3,335,547	13	14	5,032,655	106,948	1,199,133	825,573	225	275	3,316,557	86	101	682,142	1,012,732	78,498	1,428,095	46	59	356,580	67,533,406	2.73
10/30/2010	49,775,287	1243 (\$2,N) - 10/25/10 1345 (\$3,N) - 10/27/10	3,381,643	15	16	5,024,213	106,782	1,187,956	823,604	375	200	3,953,547	118	140	780,698	1,060,330	83,556	1,609,281	72	87	390,600	68,177,496	2.75
11/6/2010	53,337,848	1237 (\$1,N); 1290 (\$10,N) - 11/01/10	3,077,378	4	5	5,272,446	108,946	1,236,736	834,465	225	275	2,115,522	12	16	503,490	1,113,528	89,447	2,450,557	104	123	519,393	70,659,756	2.85
11/13/2010	52,285,479	1289 (\$3,N); 1291 (\$5,N) - 11/08/10	3,119,350	6	7	5,326,172	109,316	1,235,631	1,019,783	375	500	2,123,118	25	12	506,225	1,099,192	87,965	1,407,333	20	25	354,606	68,674,169	2.77
11/20/2010	52,424,036	1288 (\$2,N) - 11/15/10	3,162,292	8	9	5,124,861	104,372	1,234,396	795,125	200	225	2,132,040	16	25	513,725	1,064,835	84,612	1,543,690	35	50	378,075	68,562,058	2.77
11/27/2010	51,262,518	1280 (\$1,N); 1292 (\$5,N) - 11/22/10	3,149,608	10	11	4,923,209	98,827	1,167,907	823,798	275	375	2,138,067	34	42	504,292	1,022,779	81,580	1,659,305	64	79	397,704	67,229,593	2.71
12/4/2010	56,385,259	0	3,209,886	12	4	5,363,547	109,244	1,253,990	1,186,124	475	625	2,557,727	52	62	583,255	1,122,484	89,338	1,676,877	95	20	400,704	73,938,434	2.98
12/11/2010	56,540,048	1294 (\$1,N); 1282 (\$5,N) - 12/06/10	3,017,170	4	5	5,249,891	105,120	1,247,150	1,610,514	775	1,000	2,939,445	74	88	635,353	1,112,322	86,776	1,349,316	25	37	350,296	74,243,400	3.00
12/18/2010	57,699,991	1296 (\$3,N) - 12/13/10	3,109,357	6	7	5,252,987	103,488	1,245,192	1,210,115	1,200	200	3,933,829	104	123	784,466	1,102,301	86,146	1,297,373	20	25	340,030	76,165,273	3.07
12/25/2010	59,800,480	1299 (\$1,N); 1229 (\$5,N) - 12/20/10	3,068,654	8	9	5,231,226	107,702	1,204,856	868,156	225	275	5,351,969	145	168	985,293	1,104,373	87,086	1,295,059	35	46	331,397	79,436,251	3.21
1/1/2011	61,423,121	0	3,359,890	10	11	5,077,612	102,834	1,237,160	811,499	200	225	10,941,746	200	242	1,800,536	1,071,712	84,683	1,300,553	20	25	334,032	87,545,378	3.53
1/8/2011	60,976,653	1235 (\$2,N); 1244 (\$7,N) - 01/03/11	3,707,467	12	13	5,293,334	108,360	1,318,987	819,622	200	200	16,790,680	355	12	2,368,323	1,072,909	85,890	1,576,046	34	51	379,953	94,498,223	3.81
1/15/2011	50,099,433	1347 (\$1,N); 1295 (\$5,N) - 01/10/11	3,452,519	14	15	5,106,627	103,731	1,257,272	812,492	200	225	2,482,466	20	30	586,636	1,050,658	83,033	1,763,215	67	82	415,988	67,214,070	2.71
1/22/2011	53,143,646	1301 (\$2,N); 1276 (\$10,N) - 01/17/11	3,556,243	16	17	5,117,082	103,758	1,256,776	930,899	275	400	2,718,720	40	51	634,744	1,034,584	79,578	2,175,063	96	118	483,762	71,234,854	2.87
1/29/2011	54,096,128	0	3,571,489	18	19	5,146,945	107,882	1,247,311	785,350	200	200	3,092,586	63	77	693,500	1,048,424	80,444	1,327,163	20	25	345,062	71,542,284	2.89
2/5/2011	53,433,592	1306 (\$1,N); 1283 (\$5,N); 1343 (\$5,N) - 01/31/11	3,385,152	20	21	5,603,353	109,006	1,244,065	813,277	200	225	2,640,105	91	12	607,698	1,173,019	91,003	1,369,001	35	50	352,903	70,822,173	2.86
2/12/2011	60,277,094	1304 (\$1,N); 1305 (\$3,N) - 02/07/11	3,582,855	22	23	5,763,866	112,625	1,297,205	987,718	275	400	2,425,191	19	30	694,650	1,202,906	92,669	1,667,284	63	82	406,069	78,510,132	3.17
2/19/2011	61,536,763	1225 (\$2,N); 1307 (\$5,N) - 02/14/11	3,751,031	24	25	5,688,758	113,341	1,298,336	969,766	525	200	2,626,037	40	52	738,866	1,213,075	91,579	2,378,242	101	126	518,488	80,924,281	3.27
2/26/2011	59,046,203	1242 (\$2,N) - 02/24/11	3,765,647	26	27	5,524,278	111,516	1,280,405	820,818	200	225	2,850,877	64	76	801,464	1,168,816	88,186	3,027,283	155	184	615,115	79,100,607	3.19
3/5/2011	60,537,060	1308 (\$1,N); 1309 (\$5,N) - 02/28/11	3,823,961	28	29	5,818,485	112,110	1,320,942	984,506	275	400	3,533,405	88	105	781,530	1,243,800	95,453	1,397,856	20	25	366,759	80,015,867	3.23
3/12/2011	59,997,361	1143 (\$2,N); 1354 (\$20,N) - 03/07/11	3,462,888	30	4	5,481,752	105,643	1,306,146	838,723	200	225	4,418,415	127	151	913,343	1,166,246	87,860	1,447,580	40	54	373,062	79,599,019	3.21
3/19/2011	57,835,554	1311 (\$1,N); 1324 (\$10,N) - 03/14/11 1316 (\$3,N) - 03/16/11	3,074,648	5	6	5,425,746	105,298	1,260,180	832,212	300	200	6,109,530	172	201	1,166,150	1,137,789	88,670	1,592,883	67	85	396,458	79,025,117	3.19

Texas Lottery Commission - Weekly Sales Summary for FY 2011 (Unaudited)

Week Ended	Instant Games	New Games & Dates	Lotto Texas	Jackpot		Pick 3	Pick 3 Sum It Up	Cash Five	Texas Two Step	Jackpot		Mega Millions	Jackpot		Megaplier	Daily 4	Daily 4 Sum It Up	Powerball	Jackpot			Total	Per Cap.
				W	S					M	TH		T	F					W	S	Power Play		
3/26/2011	57,911,940	1314 (\$2,N); 1312 (\$5,N) - 03/21/11 1352 (\$10,N) - 03/23/11	3,312,554	7	8	5,315,680	105,979	1,259,070	852,479	225	275	12,687,665	244	312	2,117,764	1,148,054	85,066	2,330,335	101	125	515,006	87,641,591	3.54
4/2/2011	60,407,139	0	3,353,449	9	10	5,411,628	112,617	1,289,273	1,115,125	400	525	2,466,832	12	19	586,258	1,226,298	88,533	3,208,778	153	187	660,474	79,926,403	3.23
4/9/2011	60,704,285	1318 (\$5,N) - 4/04/11	3,398,173	11	12	5,422,068	116,376	1,296,927	857,484	200	225	2,805,743	30	44	641,656	1,222,047	87,737	3,002,564	218	20	604,543	80,159,602	3.23
4/16/2011	57,663,398	1239 (\$2,N); 1279 (\$7, N) - 4/11/11	3,329,910	13	14	5,351,959	113,810	1,263,310	868,052	300	200	3,080,722	58	72	681,897	1,195,501	84,770	1,518,994	27	43	377,943	75,530,265	3.05
4/23/2011	56,740,216	1319 (\$1,N); 1320 (\$3,N) - 4/18/11	3,232,781	15	4	5,335,212	114,532	1,256,394	910,919	225	300	2,384,544	12	19	566,256	1,179,656	85,193	1,920,964	56	72	442,876	74,169,542	2.99
4/30/2011	58,042,011	1298 (\$2,N); 1303 (\$5,N) - 4/25/11	3,053,156	5	6	5,442,397	116,872	1,260,947	924,301	425	200	2,623,478	29	40	606,891	1,185,364	84,929	1,440,233	20	25	365,981	75,146,559	3.03
5/7/2011	66,509,159	1323 (\$1, N) - 5/02/11	3,133,943	7	8	5,737,694	118,486	1,301,581	924,366	225	300	2,572,470	51	12	602,739	1,244,369	91,602	1,623,193	36	50	394,391	84,253,992	3.40
5/14/2011	53,769,716	1353 (\$1, N) - 5/09/11	3,124,023	9	10	5,459,652	111,766	1,267,026	1,240,350	425	575	2,354,524	18	27	568,704	1,174,400	83,938	1,952,228	65	81	447,332	71,553,658	2.89
5/21/2011	53,704,228	1321 (\$2, N); 1325 (\$5,N) - 5/16/11	3,189,399	11	12	5,341,542	112,224	1,258,164	1,719,817	750	975	2,177,060	12	16	524,292	1,145,665	82,245	2,536,867	97	120	536,607	72,328,110	2.92
5/28/2011	52,310,134	1351 (\$3, N) - 5/23/11	3,186,227	13	14	5,274,150	106,061	1,221,492	1,302,083	1,200	200	2,284,433	26	35	546,062	1,112,624	78,942	3,345,803	144	171	658,045	71,426,055	2.88
6/4/2011	53,256,725	1326 (\$1, N); 1327 (\$5, N) - 5/31/11	3,337,151	15	16	5,301,253	106,833	1,218,284	911,514	225	300	2,090,110	12	15	508,676	1,147,723	82,375	3,129,760	200	20	628,925	71,719,328	2.89
6/11/2011	54,293,614	0	3,353,656	17	18	5,264,262	104,514	1,232,635	1,305,311	425	600	2,316,616	24	33	555,266	1,140,748	83,185	1,480,740	25	20	376,087	71,506,633	2.89
6/18/2011	52,688,230	1328 (\$2, N); 1329 (\$7, N) - 06/13/11	3,135,852	19	4	5,155,370	104,041	1,210,913	1,609,298	775	1,000	2,614,322	42	53	599,817	1,157,158	88,417	1,483,683	25	36	375,542	70,222,643	2.83
6/25/2011	53,174,595	1330 (\$1, N); 1331 (\$5, N) - 06/20/11 1350 (\$5, N) - 06/22/11	2,861,974	5	4	5,072,083	102,299	1,200,371	877,099	200	225	2,990,575	64	76	659,570	1,122,363	82,900	1,706,532	48	63	411,172	70,261,532	2.84
7/2/2011	53,687,509	1315 (\$5, N) - 06/27/11	2,999,185	5	6	5,324,632	103,060	1,231,041	926,807	300	200	3,678,005	88	105	775,659	1,162,672	86,678	1,706,736	76	20	412,311	72,094,294	2.91
7/9/2011	53,054,685	1341 (\$3, N); 1332 (\$3, N); 1356 (10, N) - 07/05/11; 1355 (\$2, N) - 07/08/11	2,985,902	7	8	5,200,640	101,958	1,207,983	926,541	225	300	2,136,106	12	16	520,584	1,133,657	84,996	1,536,255	25	36	377,368	69,266,674	2.75
7/16/2011	51,161,290	1217 (\$3, N) - 07/14/11	3,111,449	9	10	5,093,820	102,289	1,221,365	990,008	450	200	2,389,432	24	33	568,950	1,146,964	81,984	1,811,914	48	61	427,559	68,107,023	2.70
7/23/2011	50,807,750	1334 (\$5, N); 1335(1, N) - 07/18/11	3,151,193	11	12	4,971,302	100,064	1,196,461	946,005	225	300	2,584,970	43	53	601,490	1,105,034	79,106	2,143,888	76	92	482,701	68,169,963	2.70
7/30/2011	51,277,179	0	3,253,912	13	14	4,997,311	99,455	1,199,135	959,399	450	200	2,880,999	63	74	646,988	1,114,005	79,759	3,018,849	111	133	620,952	70,147,943	2.78
8/6/2011	53,320,489	1293 (\$2, N); 1337 (\$5, N) - 08/01/11	3,435,644	15	16	5,293,699	103,615	1,234,944	957,327	225	300	3,271,611	85	99	720,692	1,163,787	85,076	3,902,193	160	180	753,448	74,242,523	2.94
8/13/2011	50,914,022	0	3,457,013	17	18	5,028,770	100,381	1,212,441	1,301,138	450	600	2,160,026	12	16	513,792	1,136,666	83,222	3,758,756	220	20	714,920	70,381,146	2.79
8/20/2011	49,905,898	1338 (\$1, N); 1339 (\$5, N) - 08/15/11	3,677,254	19	20	4,967,886	99,123	1,218,010	1,178,480	775	200	2,353,286	24	32	548,833	1,142,730	82,266	1,737,216	25	37	413,962	67,324,943	2.67
8/27/2011	49,424,242	1238 (\$10, N) - 08/22/11	3,652,754	21	22	4,780,458	94,675	1,197,779	886,775	225	200	2,070,483	12	14	497,455	1,101,596	79,834	2,018,167	47	61	457,500	66,261,716	2.63
weekly change	-1.0%		-0.7%			-3.8%	-4.5%	-1.7%	-24.8%			-12.0%			-9.4%	-3.6%	-3.0%	16.2%			10.5%	-1.6%	
	SALES		SALES			SALES	SALES	SALES	SALES			SALES	SALES	SALES	SALES	SALES	SALES	SALES	SALES	SALES	SALES	SALES	% of Sales
Startup to date	41,848,083,398		10,906,255,987			4,124,936,265	23,255,763	2,320,285,694	577,341,458			1,484,370,645	339,875,221	200,432,371	22,925,928	155,308,836					36,018,808	62,247,224,345	100.0%
Calendar Year to date	1,893,186,731		114,809,461			181,304,580	123,957	42,710,372	34,108,742			119,147,757	25,221,451	39,285,030	2,910,122	72,367,344					16,202,538	2,541,378,084	100.0%
Fiscal Year to date 2011	2,814,991,876		170,749,192			271,800,672	5,496,827	64,101,208	50,489,957			175,477,803	36,970,034	58,074,086	4,388,079	99,971,388					22,884,092	3,775,395,213	100.0%