



WEEKLY SALES SUMMARY

Unaudited

Week Ending: 08/29/2009

Texas Lottery Commission
Fiscal Year to Date Sales Comparison
Unaudited

Through the week ending 08/29/2009 (52 weeks)

Sales by Game	FY 2007 *	FY 2008 **	FY 2009	\$ Change		% Change	
				FY 2009 to FY 2007	FY 2009 to FY 2008	FY 2009 to FY 2007	FY 2009 to FY 2008
Instants	\$ 2,857,495,929	\$ 2,777,781,856	\$ 2,778,243,930	\$ -79,251,999	\$ 462,074	-2.8%	0.0%
Lotto Texas	232,508,254	204,506,876	199,977,312	-32,530,942	-4,529,564	-14.0%	-2.2%
Pick 3	312,676,112	286,288,963	283,990,643	-28,685,469	-2,298,320	-9.2%	-0.8%
Pick 3 Sum It Up	-	6,482,576	5,897,576	5,897,576	-585,001	-	-9.0%
Cash 5	86,297,272	75,718,495	70,464,724	-15,832,548	-5,253,771	-18.3%	-6.9%
Texas Two Step	48,411,807	47,872,520	50,798,204	2,386,397	2,925,684	4.9%	6.1%
Mega Millions	192,462,125	174,393,262	215,023,775	22,561,650	40,630,513	11.7%	23.3%
Megaplier	44,327,303	41,354,571	47,276,053	2,948,750	5,921,482	6.7%	14.3%
Daily 4	-	42,195,943	46,668,679	46,668,679	4,472,737	-	10.6%
Daily 4 Sum It Up	-	8,335,544	5,398,632	5,398,632	-2,936,912	-	-35.2%
Total	\$ 3,774,178,802	\$ 3,664,930,605	\$ 3,703,739,528	\$ -70,439,274	\$ 38,808,923	-1.9%	1.1%

* 3 extra days in 2007 ** 2 extra days in 2008

Texas Lottery Commission
Fiscal Year Over Year Change in Sales
Unaudited
FY 2009 Compared to FY 2008

Week	FY 2009 Week Ending	INSTANT TICKETS				ON-LINE GAMES				TOTAL SALES			
		FY 2009	FY 2008	Difference	% change - Cumulative Sales	FY 2009	FY 2008	Difference	% change - Cumulative Sales	FY 2009	FY 2008	Difference	% change - Cumulative Sales
1	9/6/2008**	\$44,890,104	\$62,376,229	(\$17,486,125)	-28.0%	\$14,722,011	\$19,372,224	(\$4,650,213)	-24.0%	\$59,612,115	\$81,748,453	(\$22,136,338)	-27.1%
2	9/13/2008	\$46,309,551	\$52,458,866	(\$6,149,315)	-20.6%	\$13,704,860	\$16,926,163	(\$3,221,303)	-21.7%	\$60,014,411	\$69,385,029	(\$9,370,618)	-20.8%
3	9/20/2008	\$42,923,171	\$49,998,934	(\$7,075,763)	-18.6%	\$12,291,263	\$15,792,283	(\$3,501,020)	-21.8%	\$55,214,434	\$65,791,217	(\$10,576,783)	-19.4%
4	9/27/2008	\$47,042,801	\$49,894,175	(\$2,851,374)	-15.6%	\$14,222,339	\$14,800,514	(\$578,175)	-17.9%	\$61,265,140	\$64,694,689	(\$3,429,549)	-16.2%
5	10/4/2008	\$50,747,162	\$53,486,863	(\$2,739,701)	-13.5%	\$15,784,472	\$16,618,430	(\$833,958)	-15.3%	\$66,531,634	\$70,105,293	(\$3,573,659)	-14.0%
6	10/11/2008	\$49,763,789	\$50,918,020	(\$1,154,231)	-11.7%	\$15,622,498	\$15,601,410	\$21,088	-12.9%	\$65,386,287	\$66,519,430	(\$1,133,143)	-12.0%
7	10/18/2008	\$49,299,053	\$50,532,253	(\$1,233,200)	-10.5%	\$15,167,940	\$15,682,666	(\$514,726)	-11.6%	\$64,466,993	\$66,214,919	(\$1,747,926)	-10.7%
8	10/25/2008	\$49,977,581	\$50,347,450	(\$369,869)	-9.3%	\$14,525,843	\$15,586,516	(\$1,060,673)	-11.0%	\$64,503,424	\$65,933,966	(\$1,430,542)	-9.7%
9	11/1/2008	\$50,346,542	\$53,953,733	(\$3,607,191)	-9.0%	\$14,838,845	\$16,775,983	(\$1,937,139)	-11.1%	\$65,185,387	\$70,729,716	(\$5,544,330)	-9.5%
10	11/8/2008	\$54,860,087	\$53,635,090	\$1,224,997	-7.9%	\$16,057,069	\$15,912,791	\$144,278	-9.9%	\$70,917,156	\$69,547,881	\$1,369,275	-8.3%
11	11/15/2008	\$53,484,812	\$51,254,401	\$2,230,411	-6.8%	\$15,829,819	\$15,797,076	\$32,744	-9.0%	\$69,314,631	\$67,051,477	\$2,263,155	-7.3%
12	11/22/2008	\$52,806,511	\$50,897,817	\$1,908,694	-5.9%	\$16,460,748	\$15,801,720	\$659,028	-7.9%	\$69,267,259	\$66,699,537	\$2,567,722	-6.4%
13	11/29/2008	\$52,199,741	\$53,913,115	(\$1,713,374)	-5.7%	\$17,397,576	\$17,055,505	\$342,072	-7.1%	\$69,597,317	\$70,968,620	(\$1,371,303)	-6.0%
14	12/6/2008	\$56,731,851	\$55,702,697	\$1,029,154	-5.1%	\$20,363,789	\$17,900,717	\$2,463,073	-5.5%	\$77,095,640	\$73,603,414	\$3,492,227	-5.2%
15	12/13/2008	\$54,109,617	\$53,703,516	\$406,101	-4.7%	\$22,952,228	\$17,820,841	\$5,131,387	-3.0%	\$77,061,845	\$71,524,357	\$5,537,488	-4.3%
16	12/20/2008	\$55,777,328	\$57,592,769	(\$1,815,441)	-4.6%	\$15,833,517	\$17,436,233	(\$1,602,716)	-3.4%	\$71,610,845	\$75,029,002	(\$3,418,157)	-4.3%
17	12/27/2008	\$57,597,885	\$57,696,003	(\$98,118)	-4.3%	\$15,851,771	\$14,743,680	\$1,108,091	-2.9%	\$73,449,656	\$72,439,683	\$1,009,973	-4.0%
18	1/3/2009	\$57,582,115	\$57,935,952	(\$353,837)	-4.1%	\$16,900,028	\$15,704,450	\$1,195,578	-2.3%	\$74,482,143	\$73,640,402	\$841,741	-3.7%
19	1/10/2009	\$54,250,945	\$55,360,542	(\$1,109,597)	-4.0%	\$16,203,220	\$15,691,540	\$511,680	-2.0%	\$70,454,165	\$71,052,082	(\$597,917)	-3.5%
20	1/17/2009	\$51,625,339	\$54,920,166	(\$3,294,827)	-4.1%	\$15,701,605	\$16,259,669	(\$558,064)	-2.1%	\$67,326,944	\$71,179,835	(\$3,852,891)	-3.6%
21	1/24/2009	\$52,789,573	\$54,439,890	(\$1,650,317)	-4.1%	\$15,897,473	\$16,691,724	(\$794,251)	-2.2%	\$68,687,046	\$71,131,614	(\$2,444,568)	-3.6%
22	1/31/2009	\$55,453,471	\$57,464,382	(\$2,010,911)	-4.0%	\$16,908,272	\$17,968,227	(\$1,059,955)	-2.4%	\$72,361,743	\$75,432,609	(\$3,070,866)	-3.7%
23	2/7/2009	\$62,247,711	\$60,715,019	\$1,532,692	-3.7%	\$18,354,314	\$20,097,338	(\$1,743,025)	-2.7%	\$80,602,025	\$80,812,357	(\$210,333)	-3.5%
24	2/14/2009	\$60,509,056	\$57,093,143	\$3,415,913	-3.3%	\$19,218,078	\$22,179,908	(\$2,961,831)	-3.3%	\$79,727,134	\$79,273,051	\$454,083	-3.3%
25	2/21/2009	\$59,194,623	\$57,627,047	\$1,567,576	-3.0%	\$21,098,199	\$27,230,539	(\$6,132,340)	-4.5%	\$80,292,822	\$84,857,586	(\$4,564,764)	-3.4%
26	2/28/2009	\$58,857,216	\$55,591,667	\$3,265,549	-2.7%	\$24,116,924	\$17,016,118	\$7,100,806	-2.8%	\$82,974,140	\$72,607,785	\$10,366,355	-2.7%
27	3/7/2009	\$59,552,257	\$56,837,481	\$2,714,776	-2.4%	\$23,995,136	\$16,690,193	\$7,304,943	-1.1%	\$83,547,393	\$73,527,674	\$10,019,719	-2.1%
28	3/14/2009	\$53,754,084	\$54,587,112	(\$833,028)	-2.4%	\$18,769,831	\$16,448,165	\$2,321,667	-0.6%	\$72,523,915	\$71,035,277	\$1,488,639	-1.9%
29	3/21/2009	\$52,581,107	\$53,098,937	(\$517,830)	-2.3%	\$15,903,038	\$16,639,184	(\$736,146)	-0.7%	\$68,484,145	\$69,738,121	(\$1,253,976)	-1.9%
30	3/28/2009	\$52,560,961	\$53,933,689	(\$1,372,728)	-2.3%	\$16,094,933	\$17,698,625	(\$1,603,692)	-1.0%	\$68,655,894	\$71,632,314	(\$2,976,420)	-2.0%
31	4/4/2009	\$56,249,759	\$57,598,982	(\$1,349,223)	-2.3%	\$17,357,002	\$17,665,411	(\$308,409)	-1.0%	\$73,606,761	\$75,264,393	(\$1,657,632)	-2.0%
32	4/11/2009	\$54,440,987	\$53,954,185	\$486,802	-2.2%	\$17,660,600	\$15,860,784	\$1,799,816	-0.7%	\$72,101,587	\$69,814,969	\$2,286,618	-1.9%
33	4/18/2009	\$52,755,834	\$53,946,736	(\$1,190,902)	-2.2%	\$18,469,585	\$16,452,676	\$2,016,909	-0.3%	\$71,225,419	\$70,399,412	\$826,007	-1.8%
34	4/25/2009	\$51,450,968	\$51,533,006	(\$82,038)	-2.2%	\$20,216,898	\$16,873,949	\$3,342,950	0.3%	\$71,667,866	\$68,406,955	\$3,260,912	-1.6%
35	5/2/2009	\$52,327,090	\$53,250,568	(\$923,478)	-2.2%	\$23,520,573	\$18,202,103	\$5,318,471	1.2%	\$75,847,663	\$71,452,671	\$4,394,993	-1.4%
36	5/9/2009	\$53,214,412	\$54,060,849	(\$846,437)	-2.1%	\$16,241,207	\$18,422,562	(\$2,181,355)	0.8%	\$69,455,619	\$72,483,411	(\$3,027,792)	-1.4%
37	5/16/2009	\$50,785,227	\$54,010,641	(\$3,225,414)	-2.2%	\$15,990,544	\$20,728,360	(\$4,737,816)	0.0%	\$66,775,771	\$74,739,001	(\$7,963,230)	-1.7%
38	5/23/2009	\$56,567,077	\$50,377,032	\$6,190,045	-1.9%	\$15,874,447	\$15,461,384	\$413,063	0.1%	\$72,441,524	\$65,838,416	\$6,603,108	-1.4%
39	5/30/2009	\$55,359,239	\$49,545,080	\$5,814,159	-1.6%	\$16,040,196	\$15,175,370	\$864,826	0.2%	\$71,399,435	\$64,720,450	\$6,678,985	-1.1%
40	6/6/2009	\$60,250,125	\$53,702,986	\$6,547,139	-1.2%	\$16,301,599	\$15,982,166	\$319,434	0.2%	\$76,551,724	\$69,685,152	\$6,866,573	-0.9%

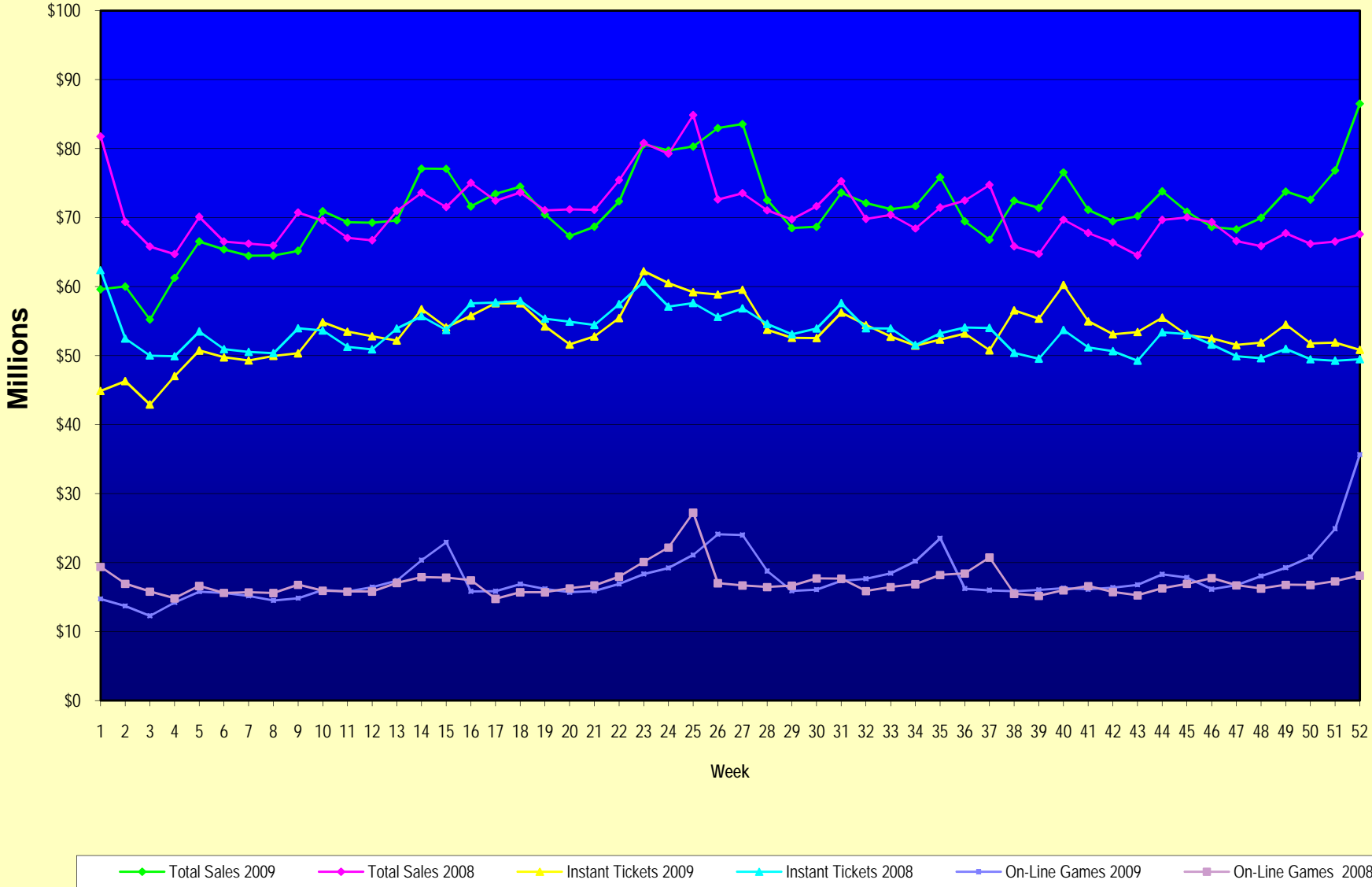
Note: Week 1 is not a full week of sales as this report is prepared on a Fiscal Year basis.

Texas Lottery Commission
Fiscal Year Over Year Change in Sales
Unaudited
FY 2009 Compared to FY 2008

Week	FY 2009 Week Ending	INSTANT TICKETS				ON-LINE GAMES				TOTAL SALES			
		FY 2009	FY 2008	Difference	% change - Cumulative Sales	FY 2009	FY 2008	Difference	% change - Cumulative Sales	FY 2009	FY 2008	Difference	% change - Cumulative Sales
41	6/13/2009	\$54,979,517	\$51,171,483	\$3,808,034	-1.0%	\$16,143,215	\$16,589,087	(\$445,872)	0.2%	\$71,122,732	\$67,760,570	\$3,362,162	-0.7%
42	6/20/2009	\$53,109,433	\$50,650,362	\$2,459,071	-0.9%	\$16,357,924	\$15,728,484	\$629,440	0.3%	\$69,467,357	\$66,378,846	\$3,088,511	-0.6%
43	6/27/2009	\$53,431,083	\$49,258,266	\$4,172,817	-0.7%	\$16,786,203	\$15,250,905	\$1,535,298	0.5%	\$70,217,286	\$64,509,171	\$5,708,115	-0.4%
44	7/4/2009	\$55,518,615	\$53,393,355	\$2,125,260	-0.6%	\$18,292,421	\$16,270,619	\$2,021,802	0.7%	\$73,811,036	\$69,663,974	\$4,147,062	-0.3%
45	7/11/2009	\$53,004,390	\$53,127,756	(\$123,366)	-0.6%	\$17,842,530	\$16,914,922	\$927,608	0.8%	\$70,846,920	\$70,042,678	\$804,242	-0.2%
46	7/18/2009	\$52,498,940	\$51,593,146	\$905,794	-0.5%	\$16,138,341	\$17,752,738	(\$1,614,397)	0.6%	\$68,637,281	\$69,345,884	(\$708,603)	-0.3%
47	7/25/2009	\$51,550,731	\$49,902,181	\$1,648,550	-0.5%	\$16,748,137	\$16,706,145	\$41,992	0.6%	\$68,298,868	\$66,608,326	\$1,690,542	-0.2%
48	8/1/2009	\$51,893,977	\$49,605,420	\$2,288,557	-0.4%	\$18,065,180	\$16,254,383	\$1,810,797	0.8%	\$69,959,157	\$65,859,803	\$4,099,354	-0.1%
49	8/8/2009	\$54,506,395	\$50,961,907	\$3,544,488	-0.2%	\$19,258,117	\$16,770,496	\$2,487,621	1.1%	\$73,764,512	\$67,732,403	\$6,032,109	0.1%
50	8/15/2009	\$51,766,530	\$49,452,511	\$2,314,019	-0.1%	\$20,828,293	\$16,749,487	\$4,078,807	1.5%	\$72,594,823	\$66,201,998	\$6,392,826	0.3%
51	8/22/2009	\$51,909,040	\$49,249,518	\$2,659,522	0.0%	\$24,913,396	\$17,286,302	\$7,627,094	2.4%	\$76,822,436	\$66,535,820	\$10,286,616	0.6%
52	8/29/2009	\$50,848,517	\$49,468,928	\$1,379,589	0.0%	\$35,661,563	\$18,109,997	\$17,551,566	4.3%	\$86,510,080	\$67,578,925	\$18,931,155	1.1%
53	9/5/2009		\$6,054,239				\$493,109				\$6,547,348		
Total thru Current Week		\$2,778,243,930	\$2,777,781,856	\$462,074	0.0%	\$925,495,598	\$887,148,749	\$38,346,849	4.3%	\$3,703,739,528	\$3,664,930,605	\$38,808,923	1.1%
Fiscal Year Total		\$2,778,243,930	\$2,783,836,095			\$925,495,598	\$887,641,858			\$3,703,739,528	\$3,671,477,953		

** FY 2009 includes 6 days; FY 2008 includes 8 days
FY 2009 average daily sales are \$9,242,258. Two days at average daily sales are \$18,484,516.

Texas Lottery Commission Fiscal Year Over Year Change in Sales



Note: Week 1 is not a full week of sales as this report is prepared on a Fiscal Year basis.

Texas Lottery Commission
Instant Tickets by Price Point
Sales, Prize Expense, Sales Contribution and Payout Percentage With Year Over Year Changes
Unaudited

Fiscal Year	Price Point	# of Active Games	FY Sales	% of Instant Ticket Sales	Year over Year Change in Sales	FY Prize Expense	Year over Year Change in Prize Expense	FY Sales Contribution	Year over Year Change in Contribution	Average Prize Payout %	Year over Year Change in Payout %
2008	\$1.00	49	229,541,085	8.3%		137,953,930		\$91,587,155		60.1%	0.0%
thru	\$2.00	58	471,214,890	17.0%		307,603,256		\$163,611,634		65.3%	0.7%
8/30/2008	\$3.00	18	254,469,801	9.2%		167,221,241		\$87,248,560		65.7%	-0.2%
	\$5.00	52	769,297,441	27.7%		522,667,888		\$246,629,553		67.9%	-0.1%
	\$7.00	13	153,679,253	5.5%		104,509,258		\$49,169,995		68.0%	0.1%
	\$10.00	21	407,794,346	14.7%		285,343,186		\$122,451,160		70.0%	-0.7%
	\$20.00	10	225,616,240	8.1%		161,863,873		\$63,752,367		71.7%	-0.3%
	\$25.00	1	56,127,550	2.0%		40,752,674		\$15,374,876		72.6%	0.3%
	\$30.00	3	58,048,950	2.1%		42,023,956		\$16,024,994		72.4%	0.2%
	\$50.00	3	151,992,300	5.5%		109,685,664		\$42,306,636		72.2%	0.0%
Total		228	\$2,777,781,856			\$1,879,624,927		\$898,156,929		67.7%	0.2%
2009	\$1.00	47	236,619,109	8.5%		142,193,535		94,425,574		60.1%	0.0%
thru	\$2.00	43	447,969,646	16.1%		291,801,370		156,168,276		65.1%	-0.2%
8/29/2009	\$3.00	19	292,179,546	10.5%		191,649,971		100,529,575		65.6%	-0.2%
	\$5.00	51	841,975,730	30.3%		572,711,864		269,263,866		68.0%	0.1%
	\$7.00	9	136,435,404	4.9%		92,782,664		43,652,740		68.0%	0.0%
	\$10.00	21	382,113,160	13.8%		267,250,941		114,862,219		69.9%	0.0%
	\$20.00	9	311,877,480	11.2%		228,083,827		83,793,653		73.1%	1.9%
	\$25.00	1	2,372,325	0.1%		1,725,527		646,798		72.7%	0.2%
	\$30.00	3	10,023,630	0.4%		7,263,494		2,760,136		72.5%	0.1%
	\$50.00	4	116,677,900	4.2%		86,965,674		29,712,226		74.5%	3.3%
Total		207	\$2,778,243,930			\$1,882,428,867		\$895,815,063		67.8%	0.1%
Variance	\$1.00	-2	7,078,024		3.1%	4,239,605	3.1%	2,838,419	3.1%	-0.01%	
2009 to	\$2.00	-15	-23,245,244		-4.9%	-15,801,886	-5.1%	-7,443,358	-4.5%	-0.14%	
2008	\$3.00	1	37,709,745		14.8%	24,428,730	14.6%	13,281,015	15.2%	-0.12%	
	\$5.00	-1	72,678,289		9.4%	50,043,977	9.6%	22,634,312	9.2%	0.08%	
	\$7.00	-4	-17,243,849		-11.2%	-11,726,594	-11.2%	-5,517,255	-11.2%	0.00%	
	\$10.00	0	-25,681,186		-6.3%	-18,092,245	-6.3%	-7,588,941	-6.2%	-0.03%	
	\$20.00	-1	86,261,240		38.2%	66,219,955	40.9%	20,041,285	31.4%	1.39%	
	\$25.00	0	-53,755,225		-95.8%	-39,027,147	-95.8%	-14,728,078	-95.8%	0.13%	
	\$30.00	0	-48,025,320		-82.7%	-34,760,462	-82.7%	-13,264,858	-82.8%	0.07%	
	\$50.00	1	-35,314,400		-23.2%	-22,719,990	-20.7%	-12,594,410	-29.8%	2.37%	
Total		-21	\$462,074		0.0%	\$2,803,941	0.1%	-\$2,341,867	-0.3%	0.09%	

Texas Lottery Commission
Instant Tickets by Price Point
Sales, Prize Expense, Sales Contribution and Payout Percentage With Year Over Year Changes
 Unaudited

Notes - Instant Ticket Variances

		FY 2009		FY 2008		Difference
Sales	\$1 - \$7		\$1,955,179,435		\$1,878,202,470	\$76,976,965
Prize Exp.	\$1 - \$7		\$1,291,139,405		\$1,239,955,573	\$51,183,831
Sales Cont.	\$1 - \$7		\$664,040,030		\$638,246,897	\$25,793,134
Prize Exp. %	\$1 - \$7		66.0%		66.0%	0.0%
		FY 2009		FY 2008		Difference
Sales	\$10 - \$50		\$823,064,495		\$899,579,386	-\$76,514,891
Prize Exp.	\$10 - \$50		\$591,289,463		\$639,669,353	-\$48,379,891
Sales Cont.	\$10 - \$50		\$231,775,032		\$259,910,033	-\$28,135,000
Prize Exp. %	\$10 - \$50		71.8%		71.1%	0.7%
		FY 2009		FY 2008		Difference
Sales	Instant		\$2,778,243,930		\$2,777,781,856	\$462,074
Prize Exp.	Instant		\$1,882,428,867		\$1,879,624,927	\$2,803,941
Sales Cont.	Instant		\$895,815,063		\$898,156,929	-\$2,341,867
Prize Exp. %	Instant		67.8%		67.7%	0.1%

		FY 2009		FY 2008		Difference
Sales	\$1 - \$10		\$2,337,292,595		\$2,285,996,816	\$51,295,779
Prize Exp.	\$1 - \$10		\$1,558,390,345		\$1,525,298,759	\$33,091,586
Sales Cont.	\$1 - \$10		\$778,902,250		\$760,698,057	\$18,204,193
Prize Exp. %	\$1 - \$10		66.7%		66.7%	0.0%
		FY 2009		FY 2008		Difference
Sales	\$20 - \$50		\$440,951,335		\$491,785,040	-\$50,833,705
Prize Exp.	\$20 - \$50		\$324,038,522		\$354,326,167	-\$30,287,645
Sales Cont.	\$20 - \$50		\$116,912,813		\$137,458,873	-\$20,546,060
Prize Exp. %	\$20 - \$50		73.5%		72.0%	1.4%
		FY 2009		FY 2008		Difference
Sales	Instant		\$2,778,243,930		\$2,777,781,856	\$462,074
Prize Exp.	Instant		\$1,882,428,867		\$1,879,624,927	\$2,803,941
Sales Cont.	Instant		\$895,815,063		\$898,156,929	-\$2,341,867
Prize Exp. %	Instant		67.8%		67.7%	0.1%

Texas Lottery Commission
Weekly Sales Summary
& Comparison to Previous Week
 Unaudited

	Week Ending 08/29/2009		Week Ending 08/22/2009			
	<u>THIS WEEK</u>	% of Sales	<u>LAST WEEK</u>	% of Sales	<u>\$ change</u>	<u>% change</u>
Total Sales	<u>\$86,510,080</u>		<u>\$76,822,436</u>		<u>\$9,687,644</u>	12.61%
Instant Tickets	<u>\$50,848,517</u>	58.8%	<u>\$51,909,040</u>	67.6%	<u>-\$1,060,523</u>	-2.04%
Lotto Texas	\$6,018,675	7.0%	\$5,387,632	7.0%	\$631,043	11.71%
Pick 3	\$4,886,552	5.6%	\$5,056,346	6.6%	-\$169,794	-3.36%
Pick 3 Sum It Up	\$97,330	0.1%	\$100,390	0.1%	-\$3,060	-3.05%
Cash 5	\$1,271,389	1.5%	\$1,274,632	1.7%	-\$3,243	-0.25%
Texas Two Step	\$1,517,857	1.8%	\$1,159,385	1.5%	\$358,472	30.92%
Mega Millions	\$18,112,186	20.9%	\$9,274,052	12.1%	\$8,838,134	95.30%
Megaplier	\$2,789,289	3.2%	\$1,660,026	2.2%	\$1,129,263	68.03%
Daily 4	\$879,072	1.0%	\$908,473	1.2%	-\$29,401	-3.24%
Daily 4 Sum It Up	<u>\$89,213</u>	0.1%	<u>\$92,460</u>	0.1%	<u>-\$3,248</u>	-3.51%
Total Online Sales	<u>\$35,661,563</u>		<u>\$24,913,396</u>		<u>\$10,748,167</u>	43.14%

* Totals may not sum due to rounding.

Texas Lottery Commission
Weekly Sales Summary
Unaudited

INSTANT TICKETS
TOP TEN SELLING GAMES

For the Week Ending : 08/29/2009

Rank	Price Point	Game	Sales (Millions)
1	\$ 20	\$500,000,000 BLOCKBUSTER	\$ 7.707
2	\$ 5	DALLAS COWBOYS	\$ 3.994
3	\$ 3	BONUS CASHWORD	\$ 2.289
4	\$ 10	WILD 10'S	\$ 2.241
5	\$ 5	HOUSTON TEXANS	\$ 2.094
6	\$ 5	TAKE 5	\$ 1.636
7	\$ 50	\$140,000,000 EXTREME PAYOUT	\$ 1.615
8	\$ 7	BEST OF 7'S	\$ 1.571
9	\$ 10	SET FOR LIFE	\$ 1.532
10	\$ 2	BREAK THE BANK	\$ 1.515

Texas Lottery Commission
Prize Payout Tracking Report
Unaudited

Through Week Ending 08/29/2009

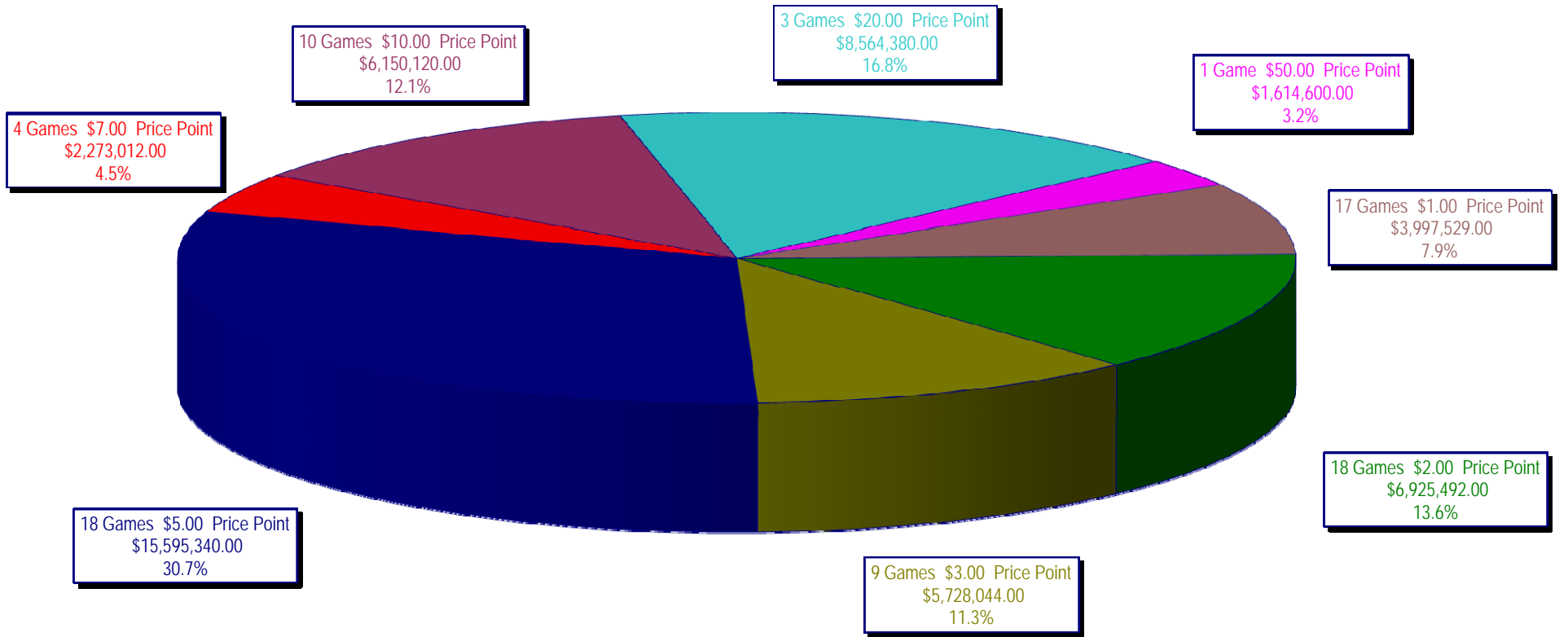
On-Line Sales

		FY Sales Through Week Ending 8/29/2009		FY Prize Expense Through Week Ending 8/29/2009	Actual* Prize Payout	Base Payout (Prize Pool)
Lotto	\$	199,977,312	\$	100,624,766	50.32%	50.00%
Pick 3		283,990,643		137,506,190	48.42%	50.00%
Pick 3 Sum It Up		5,897,576		2,657,030	45.05%	50.00%
Cash 5		70,464,724		35,337,817	50.15%	50.00%
Texas Two-Step		50,798,204		26,546,005	52.26%	50.00%
Mega Millions		215,023,775		108,052,748	50.25%	50.00%**
Megaplier		47,276,053		24,847,292	52.56%	N/A
Daily 4		46,668,679		23,119,300	49.54%	50.00%
Daily 4-Sum It Up		5,398,632		2,302,089	42.64%	50.00%
Totals	\$	925,495,598	\$	460,993,237	49.81%	

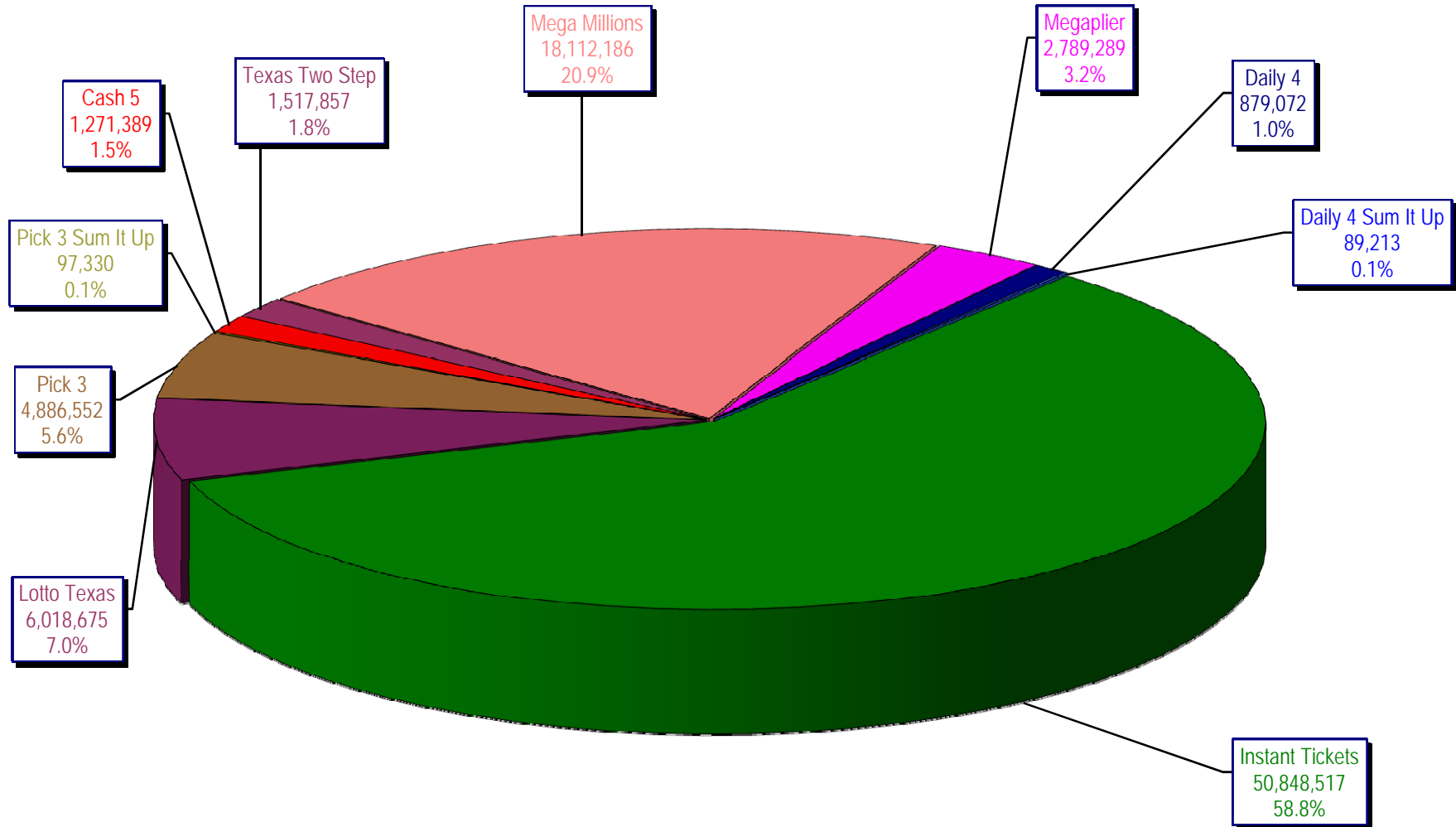
* Before Unclaimed Prizes

** Estimated; depends on # of guaranteed prizes won in Texas

Texas Lottery Commission
Instant Ticket Sales
For the Week Ending 08/29/2009
(Unaudited)



Texas Lottery Commission
All Game Sales
For the Week Ending 08/29/2009
(Unaudited)



Texas Lottery Commission - Weekly Sales Summary for FY 2009 (Unaudited)

Week Ended	Instant Games	New Games & Dates	Lotto Texas	Jackpot		Pick 3	Pick 3 Sum It Up	Cash 5	Texas Two Step	Jackpot		Mega Millions	Jackpot		Megaplier	Daily 4	Daily 4 Sum It Up	Total	Per Cap.
				W	S					M/T	TH/F		T	F					
9/6/2008	50,944,343.00	1108 (\$2,N), 1088 (\$3, N) - 9/01/08	3,378,718.00	5	6	5,436,414.00	122,123.00	1,396,622.00	890,346.00	350	450	2,445,490.00	12	16	649,090.00	786,482.50	109,834.00	66,159,462.50	2.77
9/13/2008	46,309,551.00	1109 (\$1,N), 1098 (\$5, N) - 9/08/08	3,020,089.00	7	8	4,705,585.50	105,899.00	1,279,412.00	856,199.00	600	200	2,327,214.00	24	12	617,672.00	696,633.00	96,156.50	60,014,411.00	2.51
9/20/2008	42,923,171.00	0	3,054,093.00	9	10	4,121,734.50	90,718.00	1,155,350.00	637,792.00	225	250	1,978,127.00	15	12	540,225.00	627,210.00	86,013.50	55,214,434.00	2.31
9/27/2008	47,042,801.00	1111 (\$2,N), 1099 (\$5, N) - 9/22/08	3,427,671.00	11	12	4,821,563.00	103,189.50	1,288,062.00	834,307.00	275	425	2,322,862.00	16	24	617,085.00	709,741.50	97,858.00	61,265,140.00	2.56
10/4/2008	50,747,162.00	1113 (\$1,N) 9/29/08	3,675,683.00	13	14	5,305,711.00	116,332.50	1,369,040.00	1,074,874.00	525	650	2,671,927.00	32	42	693,845.00	770,782.50	106,277.00	66,531,634.00	2.78
10/11/2008	49,763,789.00	0	3,732,365.00	15	16	5,287,094.00	114,665.50	1,370,334.00	1,305,250.00	800	975	2,306,070.00	12	16	622,120.00	778,204.00	106,395.00	65,386,286.50	2.74
10/18/2008	49,299,053.00	1117 (\$3,N), 1118 (\$20,N) - 10/13/08	3,780,438.00	17	18	5,149,258.00	109,530.00	1,355,601.00	741,849.00	200	200	2,500,644.00	23	32	652,198.00	776,366.00	102,056.00	64,466,993.00	2.70
10/25/2008	49,977,581.00	1119 (\$1,N), 1120 (\$5,N) - 10/20/08	3,210,762.00	4	5	5,099,671.00	107,104.50	1,339,079.00	789,649.00	225	275	2,456,965.00	42	12	641,206.00	778,434.00	102,972.50	64,503,424.00	2.70
11/1/2008	50,346,542.00	1121 (\$2,N), 1122 (\$10,N) - 10/27/08	3,325,641.00	6	7	5,234,124.00	109,983.00	1,339,046.00	946,035.00	375	475	2,347,596.00	16	23	626,235.00	805,572.00	104,612.50	65,185,386.50	2.73
11/8/2008	54,860,087.00	1123 (\$3,N), 1124 (\$7,N) - 11/03/08; 1103 (\$3,N) - 11/05/08; 1063 (\$3,N) - 11/07/08	3,290,417.00	4	5	5,686,701.00	118,495.00	1,397,985.00	1,158,101.00	625	750	2,729,302.50	31	42	692,662.00	871,230.00	112,175.50	70,917,156.00	2.97
11/15/2008	53,484,812.00	1125 (\$1, N), 1126 (\$5,N) - 11/10/08	3,336,934.00	6	7	5,459,984.00	112,884.00	1,366,024.00	766,955.00	200	225	3,102,251.00	51	62	749,736.00	830,957.00	104,094.00	69,314,631.00	2.90
11/22/2008	52,806,511.00	0	3,452,481.00	8	9	5,329,591.00	108,861.50	1,358,271.00	743,950.00	200	200	3,666,517.00	73	86	847,201.00	849,077.50	104,797.50	69,267,258.50	2.90
11/29/2008	52,199,741.00	1127 (\$2,N), 1128 (\$5,N) - 11/24/08	3,585,374.00	10	11	5,340,783.50	111,443.00	1,315,233.00	686,077.00	200	225	4,441,715.00	96	111	968,906.00	845,475.50	102,569.00	69,597,317.00	2.91
12/6/2008	56,731,851.00	0	3,794,991.00	12	13	5,752,593.00	121,663.50	1,416,446.00	780,328.00	250	200	6,238,355.00	128	146	1,270,214.00	881,841.50	107,357.00	77,095,640.00	3.23
12/13/2008	54,109,617.00	1129 (\$1, N) - 12/08/08	3,315,658.00	4	5	5,580,770.00	114,295.50	1,384,858.00	766,893.00	225	250	9,150,536.00	170	207	1,691,121.00	846,176.50	101,919.50	77,061,844.50	3.22
12/20/2008	55,777,328.00	1104 (\$2,N), 1105 (\$5,N), 1106 (\$10,N) - 12/15/08	3,432,340.00	6	7	5,741,120.00	116,075.50	1,401,805.00	741,945.00	200	200	2,736,234.00	12	16	687,875.00	871,579.50	104,543.00	71,610,845.00	3.00
12/27/2008	57,597,885.00	1077 (\$1,N), 1110 (\$1,N) - 12/22/08	3,582,169.00	8	4	5,628,081.50	115,323.00	1,340,590.00	708,906.00	225	250	2,842,167.00	22	29	706,042.00	828,346.00	100,146.00	73,449,655.50	3.07
1/3/2009	57,582,115.00	0	3,784,763.00	5	6	5,690,220.50	120,519.50	1,406,807.00	934,000.00	325	525	3,190,457.00	37	46	780,850.00	885,674.00	106,736.50	74,482,142.50	3.12
1/10/2009	54,250,945.00	1135 (\$2,N), 1136 (\$5,N) - 1/5/09	3,582,400.00	7	8	5,476,890.00	116,674.50	1,403,531.00	1,267,847.00	675	900	2,701,275.00	12	16	681,574.00	868,919.00	104,109.50	70,454,165.00	2.95
1/17/2009	51,625,339.00	1137 (\$1,N), 1138 (\$3,N) - 1/12/09	3,668,302.50	9	10	5,443,159.00	112,605.00	1,387,958.00	778,563.00	200	200	2,683,707.00	22	12	675,416.00	852,987.00	98,907.50	67,326,944.00	2.82
1/24/2009	52,789,573.00	1115 (\$2,N), 1116 (\$5,N) - 1/19/09	3,723,835.50	11	12	5,514,547.50	115,827.50	1,376,695.00	860,483.00	225	325	2,692,611.00	16	21	676,936.00	836,996.00	99,541.00	68,687,045.50	2.87
1/31/2009	55,453,471.00	1080 (\$1,N), 1024 (\$20,R) - 1/26/09; 1062 (\$5,N) - 1/28/09	3,837,299.00	13	14	5,700,714.50	121,794.50	1,403,756.00	1,070,879.00	450	600	3,002,883.00	30	40	731,253.00	925,937.50	113,755.50	72,361,743.00	3.03
2/7/2009	62,247,711.00	1035 (\$2,N), 1144 (\$5,N), 1058 (\$10, N) - 2/2/09	4,092,117.00	15	16	6,336,717.00	134,543.00	1,481,812.00	842,746.00	200	225	3,509,032.00	50	60	829,550.00	1,007,529.00	120,267.50	80,602,024.50	3.37
2/14/2009	60,509,056.00	1146 (\$7,N), 1089 (\$1,N) - 2/9/09	4,119,193.00	17	18	6,363,028.00	133,901.50	1,445,616.00	1,013,987.00	325	450	4,082,572.00	73	85	928,813.00	1,010,898.50	120,068.50	79,727,133.50	3.34
2/21/2009	59,194,623.00	1046 (\$2,N), 1140 (\$5,N) - 2/16/09	4,326,401.00	19	20	6,038,807.50	128,493.00	1,439,312.00	1,268,803.00	600	750	5,614,471.00	103	120	1,178,133.00	988,075.00	115,703.50	80,292,822.00	3.36
2/28/2009	58,857,216.00	1132 (\$10,N), 1149 (\$1,N) - 2/23/09	4,526,304.00	21	22	6,084,457.50	128,979.50	1,439,607.00	1,668,414.00	925	1,150	7,676,975.00	145	171	1,504,895.00	973,121.00	114,171.00	82,974,140.00	3.47

Texas Lottery Commission - Weekly Sales Summary for FY 2009 (Unaudited)

Week Ended	Instant Games	New Games & Dates	Lotto Texas	Jackpot		Pick 3	Pick 3 Sum It Up	Cash 5	Texas Two Step	Jackpot		Mega Millions	Jackpot		Megaplier	Daily 4	Daily 4 Sum It Up	Total	Per Cap.
				W	S					M/T	TH/F		T	F					
3/7/2009	59,552,257.00	0	4,928,440.00	23	25	6,133,789.00	128,599.00	1,487,185.00	1,984,358.00	1,350	1,600	6,898,457.00	212	12	1,349,427.00	971,644.50	113,236.00	83,547,392.50	3.50
3/14/2009	53,754,084.00	1139 (\$2.N), 1079 (\$5.N) - 3/09/09	4,752,592.00	26	28	5,850,166.00	120,684.50	1,418,127.00	2,112,571.00	1,900	2,150	2,782,204.00	16	26	698,214.00	925,615.00	109,657.50	72,523,915.00	3.03
3/21/2009	52,581,107.00	1107 (\$1.N), 1154 (\$3.N), 1057 (\$10.N) - 3/16/09; 1102 (\$2.N) - 3/19/09	3,437,818.00	4	5	5,776,041.50	117,294.00	1,399,720.00	880,620.00	200	225	2,595,785.00	12	16	653,517.00	934,185.00	108,057.50	68,484,145.00	2.87
3/28/2009	52,560,961.00	1130 (\$5.N), 1150 (\$10.N) - 3/23/09	3,486,731.00	6	7	5,633,454.50	114,269.50	1,381,550.00	901,673.00	300	200	2,845,499.00	24	34	701,971.00	925,093.50	104,691.50	68,655,894.00	2.87
4/4/2009	56,249,759.00	1151 (\$2.N), 1101 (\$50.N) - 3/30/09	3,746,083.00	8	9	5,893,043.50	122,332.00	1,429,598.00	940,614.00	225	300	3,321,274.00	43	54	794,282.00	998,042.00	111,733.50	73,606,761.00	3.08
4/11/2009	54,440,987.00	1153 (\$2.N) - 4/07/09; 1152 (\$3.N) - 4/08/09	3,594,176.00	10	4	5,893,551.00	120,491.50	1,394,879.00	933,807.00	425	200	3,772,700.00	65	78	857,890.00	987,127.50	105,977.50	72,101,586.50	3.02
4/18/2009	52,755,834.00	1145 (\$1.N), 1148 (\$5.N) - 4/13/09	3,462,217.00	5	6	5,627,572.00	117,123.50	1,374,682.00	829,493.00	225	200	4,960,982.00	92	109	1,040,136.00	957,161.00	100,218.50	71,225,419.00	2.98
4/25/2009	51,450,968.00	1051 (\$7.N) - 4/20/09	3,517,624.00	7	8	5,408,672.50	117,314.50	1,347,754.00	876,206.00	225	300	6,614,120.95	130	155	1,298,021.00	937,777.00	99,408.50	71,667,866.45	3.00
5/2/2009	52,327,090.00	1161 (\$1.N), 1081 (\$5.N) - 4/27/09	3,679,438.00	9	10	5,512,770.50	113,755.50	1,362,174.00	880,888.00	425	200	9,277,686.00	181	225	1,653,107.00	937,874.00	102,880.00	75,847,663.00	3.17
5/9/2009	53,214,412.00	0	3,554,635.00	11	4	5,603,106.00	118,185.50	1,389,454.00	823,436.00	225	200	2,961,748.00	12	17	718,169.00	967,592.00	104,881.00	69,455,618.50	2.91
5/16/2009	50,785,227.00	1131 (\$2.N), 1134 (\$5.N) - 5/11/09 1165 (\$1.N), 1114 (\$20.N) - 5/18/09; 1156 (\$1.N) - 5/19/09; 1153 (\$2.N) - 5/20/09	3,332,475.00	5	6	5,417,197.00	112,501.00	1,356,843.00	842,436.00	225	275	3,116,696.00	28	38	748,141.00	959,922.50	104,332.00	66,775,770.50	2.79
5/23/2009	56,567,077.00	1049 (\$3.N) - 5/25/09	3,425,065.00	7	8	5,363,150.50	111,143.50	1,356,979.00	1,061,946.00	400	525	2,790,741.00	12	16	694,815.00	967,375.50	103,231.00	72,441,523.50	3.03
5/30/2009	55,359,239.00	1112 (\$5.N) - 6/1/09	3,480,479.00	9	10	5,329,739.50	108,222.50	1,314,598.00	1,173,008.00	650	800	2,871,590.00	25	35	705,366.00	957,423.50	99,769.00	71,399,434.50	2.99
6/6/2009	60,250,125.00	1173 (\$1.N), 1090 (\$10.N) - 06/29/09	3,656,108.00	11	12	5,806,294.00	117,692.00	1,379,840.00	833,645.00	200	225	2,696,889.00	12	17	684,660.00	1,020,540.50	105,930.50	76,551,724.00	3.20
6/13/2009	54,979,517.00	1155 (\$3.N), 1158 (\$5.N) - 07/06/09	3,639,064.00	13	14	5,434,316.00	109,481.50	1,323,811.00	960,321.00	300	400	2,892,403.00	25	36	712,936.00	967,447.50	103,434.50	71,122,731.50	2.98
6/20/2009	53,109,433.00	1177 (\$1.N), 1083 (\$7.N) - 07/20/09	3,722,083.00	15	16	5,298,164.50	106,370.50	1,295,187.00	914,417.00	525	200	3,203,712.00	46	57	763,056.00	955,438.50	99,495.00	69,467,356.50	2.91
6/27/2009	53,431,083.00	1171 (\$2.N), 1260 (\$10.N) - 07/13/09	3,826,811.00	17	18	5,294,301.50	105,363.00	1,280,460.00	779,414.00	225	200	3,619,796.00	68	81	829,739.00	951,028.50	99,289.50	70,217,285.50	2.94
7/4/2009	55,518,615.00	1171 (\$2.N), 1260 (\$10.N) - 07/13/09	3,978,976.00	19	20	5,365,381.00	109,234.50	1,301,272.00	834,396.00	225	275	4,619,366.00	94	113	987,368.00	990,473.50	105,953.50	73,811,035.50	3.09
7/11/2009	53,004,390.00	1177 (\$1.N), 1083 (\$7.N) - 07/20/09	4,220,775.00	21	22	5,261,293.50	108,423.50	1,309,778.00	997,751.00	375	500	3,994,574.00	133	12	883,721.00	964,339.00	101,874.50	70,846,919.50	2.96
7/18/2009	52,498,940.00	1167 (\$3.N), 1178 (\$5.N) - 07/27/09	4,285,057.00	23	25	5,041,176.00	104,049.00	1,284,914.00	785,813.00	200	225	2,831,976.00	16	27	760,753.00	944,560.50	100,042.00	68,637,280.50	2.87
7/25/2009	51,550,731.00	1179 (\$2.N) - 08/03/09	4,330,422.00	26	27	5,093,324.00	102,837.50	1,265,233.00	893,643.00	275	375	3,157,506.00	37	48	841,070.00	964,018.00	100,083.50	68,298,868.00	2.86
8/1/2009	51,893,977.00	1157 (\$1.N) - 08/10/09	4,656,337.00	30	31	5,243,296.50	101,341.00	1,269,573.00	1,072,219.00	500	625	3,702,912.00	60	73	972,993.00	947,498.00	99,010.00	69,959,156.50	2.93
8/8/2009	54,506,395.00	1261 (\$5.N), 1262 (\$5.N) - 08/17/09	4,871,972.00	32	34	5,499,613.00	106,250.00	1,315,589.00	807,755.00	200	225	4,582,536.00	84	102	1,016,543.00	958,391.50	99,467.50	73,764,512.00	3.03
8/15/2009	51,766,530.00	0	5,039,003.00	36	37	5,060,283.50	98,226.50	1,276,469.00	919,391.00	275	400	6,209,519.00	124	146	1,223,524.00	907,348.50	94,528.50	72,594,823.00	2.98
8/22/2009	51,909,040.00	0	5,387,632.00	38	39	5,056,345.50	100,390.00	1,274,632.00	1,159,385.00	525	650	9,274,052.00	170	207	1,660,026.00	908,473.00	92,460.00	76,822,435.50	3.16
8/29/2009	50,848,517.00	0	6,018,675.00	41	43	4,886,552.00	97,330.00	1,271,389.00	1,517,857.00	825	1	18,112,186.00	252	333	2,789,289.00	879,072.00	89,212.50	86,510,079.50	3.56
weekly change	-2.04%		11.71%			-3.36%	-3.05%	-0.25%	30.92%			95.30%			68.03%	-3.24%	-3.51%	12.61%	
	SALES		SALES			SALES	SALES	SALES	SALES			SALES			SALES	SALES	SALES	SALES	% of Sales
Startup to date	36,258,829,932.00		10,479,074,359.00			3,582,709,595.50	12,383,405.50	2,189,620,734.00	477,063,922.00			1,141,162,370.45			265,484,087.00	88,885,650.50	13,737,435.50	54,717,085,463.45	100.0%
Calendar Year to date	1,876,926,257.00		139,705,067.00			191,550,096.50	175,670.50	46,882,280.00	35,904,785.00			157,205,466.95			33,616,272.00	32,677,992.00	3,596,628.00	2,518,240,514.95	100.0%
Fiscal Year to date 2009	2,778,243,930.00		199,977,312.00			283,990,643.00	5,897,575.50	70,464,724.00	50,798,204.00			215,023,775.45			47,276,053.00	46,668,679.00	5,398,632.00	3,703,739,527.95	100.0%