



WEEKLY SALES SUMMARY

Unaudited

Week Ending: 8/29/2015

Texas Lottery Commission
Fiscal Year to Date Sales Comparison
Unaudited

Through the Week Ending 8/29/2015 (52 Weeks)

Sales by Game	FY 2013 *	FY 2014 **	FY 2015	\$ Change		% Change	
				FY 2015 to FY 2013	FY 2015 to FY 2014	FY 2015 to FY 2013	FY 2015 to FY 2014
Scratch Tickets	\$ 3,222,593,714	\$ 3,272,279,367	\$ 3,464,052,191	\$ 241,458,477	\$ 191,772,824	7.5%	5.9%
Lotto Texas	146,550,658	135,519,549	123,078,304	-23,472,354	-12,441,245	-16.0%	-9.2%
Lotto Extra	6,459,905	18,718,111	19,559,137	13,099,232	841,026	-	4.5%
Pick 3	268,973,152	254,277,033	250,757,664	-18,215,488	-3,519,370	-6.8%	-1.4%
Pick 3 Sum It Up	5,059,234	5,035,999	5,176,934	117,700	140,935	2.3%	2.8%
Cash Five	56,137,265	52,367,269	50,033,472	-6,103,793	-2,333,797	-10.9%	-4.5%
Texas Two Step	59,719,618	57,186,612	54,835,736	-4,883,882	-2,350,876	-8.2%	-4.1%
Mega Millions	111,760,879	183,770,149	148,344,020	36,583,141	-35,426,129	32.7%	-19.3%
Megaplier	25,680,900	40,243,940	35,208,873	9,527,973	-5,035,067	37.1%	-12.5%
Daily 4	74,995,090	83,297,587	86,317,062	11,321,973	3,019,476	15.1%	3.6%
Daily 4 Sum It Up	4,813,982	5,141,034	4,943,949	129,967	-197,086	2.7%	-3.8%
Powerball	298,791,599	197,560,491	200,806,614	-97,984,985	3,246,123	-32.8%	1.6%
Power Play	31,189,726	24,332,787	25,726,740	-5,462,986	1,393,953	-17.5%	5.7%
All or Nothing	63,560,735	46,210,377	37,613,842	-25,946,893	-8,596,535	-40.8%	-18.6%
Monopoly	-	-	¹ 2,656,310	2,656,310	2,656,310	-	-
Total	\$ <u>4,376,286,456</u>	\$ <u>4,375,940,304</u>	\$ <u>4,509,110,847</u>	\$ <u>132,824,391</u>	\$ <u>133,170,543</u>	3.0%	3.0%

* 2 extra days

** 1 extra day

¹ Monopoly sales were suspended after draw on 12/12/14

Texas Lottery Commission
Fiscal Year to Date Cumulative Average Sales Comparison
Unaudited

Through the Week Ending 8/29/2015 (52 Weeks)

Sales by Game	FY 2013	FY 2014	FY 2015
Scratch Tickets	\$ 8,829,024	\$ 8,989,778	\$ 9,542,844
Lotto Texas	401,509	372,306	339,059
Lotto Extra	*** 46,142	51,423	53,882
Pick 3	736,913	698,563	690,792
Pick 3 Sum It Up	13,861	13,835	14,262
Cash Five	153,801	143,866	137,833
Texas Two Step	163,615	157,106	151,063
Mega Millions	306,194	504,863	408,661
Megaplier	70,359	110,560	96,994
Daily 4	205,466	228,840	237,788
Daily 4 Sum It Up	13,189	14,124	13,620
Powerball	818,607	542,749	553,186
Power Play	85,451	66,848	70,873
All or Nothing	* 231,130	126,952	103,619
Monopoly	-	- **	48,297
Total	\$ <u>12,075,261</u>	\$ <u>12,021,814</u>	\$ <u>12,462,772</u>

	thru 8/31/2013	thru 8/30/2014	thru 8/29/2015
	365 days	364 days	363 days
*	275 days		** 55 days
***	140 days		

Texas Lottery Commission
Fiscal Year Over Year Change in Sales
Unaudited
FY 2015 Compared to FY 2014

			SCRATCH TICKETS				DRAW GAMES				TOTAL SALES			
FY 2015			% change -				% change -				% change -			
Week	Week	Ending	FY 2015	FY 2014	Difference	Cumulative Sales	FY 2015	FY 2014	Difference	Cumulative Sales	FY 2015	FY 2014	Difference	Cumulative Sales
1	9/6/2014 *		\$54,911,801	\$58,587,757	(\$3,675,956)	-6.3%	\$17,482,488	\$22,369,499	(\$4,887,011)	-21.8%	\$72,394,289	\$80,957,256	(\$8,562,967)	-10.6%
2	9/13/2014		\$61,436,533	\$57,135,931	\$4,300,602	7.5%	\$19,097,081	\$25,412,980	(\$6,315,899)	-24.9%	\$80,533,614	\$82,548,911	(\$2,015,297)	-2.4%
3	9/20/2014		\$60,959,234	\$59,018,194	\$1,941,040	3.3%	\$20,567,894	\$29,161,241	(\$8,593,347)	-29.5%	\$81,527,128	\$88,179,435	(\$6,652,307)	-7.5%
4	9/27/2014		\$59,710,056	\$57,927,984	\$1,782,072	3.1%	\$19,920,828	\$20,012,313	(\$91,485)	-0.5%	\$79,630,884	\$77,940,297	\$1,690,588	2.2%
5	10/4/2014		\$62,119,854	\$62,146,816	(\$26,962)	0.0%	\$18,531,421	\$20,043,557	(\$1,512,136)	-7.5%	\$80,651,275	\$82,190,373	(\$1,539,098)	-1.9%
6	10/11/2014		\$61,253,665	\$60,867,582	\$386,083	0.6%	\$18,985,332	\$19,480,962	(\$495,631)	-2.5%	\$80,238,997	\$80,348,544	(\$109,548)	-0.1%
7	10/18/2014		\$60,230,048	\$60,612,193	(\$382,145)	-0.6%	\$19,538,402	\$20,079,610	(\$541,209)	-2.7%	\$79,768,450	\$80,691,803	(\$923,354)	-1.1%
8	10/25/2014		\$62,384,112	\$59,548,277	\$2,835,835	4.8%	\$21,475,643	\$19,319,928	\$2,155,715	11.2%	\$83,859,755	\$78,868,205	\$4,991,550	6.3%
9	11/1/2014		\$63,404,713	\$61,710,236	\$1,694,477	2.7%	\$23,568,817	\$18,308,976	\$5,259,842	28.7%	\$86,973,530	\$80,019,212	\$6,954,319	8.7%
10	11/8/2014		\$65,486,719	\$61,668,594	\$3,818,125	6.2%	\$23,749,032	\$19,555,070	\$4,193,963	21.4%	\$89,235,751	\$81,223,664	\$8,012,088	9.9%
11	11/15/2014		\$61,745,521	\$60,057,025	\$1,688,496	2.8%	\$17,449,604	\$20,930,071	(\$3,480,468)	-16.6%	\$79,195,125	\$80,987,096	(\$1,791,972)	-2.2%
12	11/22/2014		\$66,353,583	\$63,118,266	\$3,235,317	5.1%	\$17,108,084	\$19,086,770	(\$1,978,687)	-10.4%	\$83,461,667	\$82,205,036	\$1,256,631	1.5%
13	11/29/2014		\$60,471,184	\$57,145,294	\$3,325,890	5.8%	\$17,303,129	\$20,434,618	(\$3,131,489)	-15.3%	\$77,774,313	\$77,579,912	\$194,401	0.3%
14	12/6/2014		\$66,648,696	\$59,883,783	\$6,764,913	11.3%	\$18,862,425	\$22,791,842	(\$3,929,417)	-17.2%	\$85,511,121	\$82,675,625	\$2,835,496	3.4%
15	12/13/2014		\$65,708,630	\$60,310,298	\$5,398,332	9.0%	\$18,649,598	\$35,859,153	(\$17,209,555)	-48.0%	\$84,358,228	\$96,169,451	(\$11,811,223)	-12.3%
16	12/20/2014		\$68,551,298	\$65,088,999	\$3,462,299	5.3%	\$19,051,100	\$46,832,745	(\$27,781,646)	-59.3%	\$87,602,398	\$111,921,744	(\$24,319,347)	-21.7%
17	12/27/2014		\$73,858,618	\$67,721,619	\$6,136,999	9.1%	\$20,006,357	\$18,218,091	\$1,788,266	9.8%	\$93,864,975	\$85,939,710	\$7,925,265	9.2%
18	1/3/2015		\$67,733,268	\$67,162,991	\$570,277	0.8%	\$21,355,167	\$19,140,745	\$2,214,422	11.6%	\$89,088,435	\$86,303,736	\$2,784,699	3.2%
19	1/10/2015		\$64,745,641	\$65,049,914	(\$304,273)	-0.5%	\$22,265,347	\$17,954,333	\$4,311,015	24.0%	\$87,010,988	\$83,004,247	\$4,006,742	4.8%
20	1/17/2015		\$64,015,166	\$62,731,830	\$1,283,336	2.0%	\$23,694,617	\$18,900,213	\$4,794,405	25.4%	\$87,709,783	\$81,632,043	\$6,077,741	7.4%
21	1/24/2015		\$62,569,156	\$59,085,886	\$3,483,270	5.9%	\$19,765,442	\$19,558,830	\$206,612	1.1%	\$82,334,598	\$78,644,716	\$3,689,882	4.7%
22	1/31/2015		\$68,001,588	\$64,099,096	\$3,902,492	6.1%	\$22,877,000	\$20,764,006	\$2,112,995	10.2%	\$90,878,588	\$84,863,102	\$6,015,487	7.1%
23	2/7/2015		\$75,677,650	\$67,717,353	\$7,960,297	11.8%	\$31,662,209	\$22,433,672	\$9,228,537	41.1%	\$107,339,859	\$90,151,025	\$17,188,834	19.1%
24	2/14/2015		\$75,368,712	\$69,949,998	\$5,418,714	7.7%	\$46,091,747	\$25,572,367	\$20,519,380	80.2%	\$121,460,459	\$95,522,365	\$25,938,094	27.2%
25	2/21/2015		\$74,833,076	\$72,422,148	\$2,410,928	3.3%	\$19,865,172	\$31,832,665	(\$11,967,493)	-37.6%	\$94,698,248	\$104,254,813	(\$9,556,565)	-9.2%
26	2/28/2015		\$69,918,013	\$72,883,830	(\$2,965,817)	-4.1%	\$19,735,352	\$21,827,140	(\$2,091,789)	-9.6%	\$89,653,365	\$94,710,970	(\$5,057,606)	-5.3%
27	3/7/2015		\$74,848,961	\$73,726,744	\$1,122,217	1.5%	\$19,946,068	\$22,528,352	(\$2,582,284)	-11.5%	\$94,795,029	\$96,255,096	(\$1,460,067)	-1.5%
28	3/14/2015		\$70,079,409	\$71,026,808	(\$947,399)	-1.3%	\$20,044,562	\$25,171,358	(\$5,126,797)	-20.4%	\$90,123,971	\$96,198,166	(\$6,074,196)	-6.3%
29	3/21/2015		\$70,368,686	\$69,174,125	\$1,194,561	1.7%	\$18,480,795	\$25,837,564	(\$7,356,769)	-28.5%	\$88,849,481	\$95,011,689	(\$6,162,208)	-6.5%
30	3/28/2015		\$70,280,600	\$66,886,917	\$3,393,683	5.1%	\$17,595,205	\$18,604,870	(\$1,009,665)	-5.4%	\$87,875,805	\$85,491,787	\$2,384,018	2.8%
31	4/4/2015		\$74,369,952	\$71,218,020	\$3,151,932	4.4%	\$18,378,917	\$19,883,667	(\$1,504,750)	-7.6%	\$92,748,869	\$91,101,687	\$1,647,182	1.8%
32	4/11/2015		\$67,416,817	\$65,970,648	\$1,446,169	2.2%	\$18,594,844	\$18,875,485	(\$280,641)	-1.5%	\$86,011,661	\$84,846,133	\$1,165,529	1.4%
33	4/18/2015		\$68,393,316	\$64,922,280	\$3,471,036	5.3%	\$18,104,632	\$19,723,048	(\$1,618,416)	-8.2%	\$86,497,948	\$84,645,328	\$1,852,620	2.2%
34	4/25/2015		\$70,078,182	\$60,578,829	\$9,499,353	15.7%	\$17,957,150	\$18,978,148	(\$1,020,998)	-5.4%	\$88,035,332	\$79,556,977	\$8,478,355	10.7%
35	5/2/2015		\$71,744,718	\$64,244,545	\$7,500,173	11.7%	\$18,961,113	\$19,029,632	(\$68,519)	-0.4%	\$90,705,831	\$83,274,177	\$7,431,655	8.9%
36	5/9/2015		\$73,415,978	\$65,679,029	\$7,736,949	11.8%	\$20,210,341	\$19,350,478	\$859,863	4.4%	\$93,626,319	\$85,029,507	\$8,596,812	10.1%
37	5/16/2015		\$72,152,109	\$63,627,971	\$8,524,138	13.4%	\$20,362,774	\$19,865,609	\$497,165	2.5%	\$92,514,883	\$83,493,580	\$9,021,303	10.8%
38	5/23/2015		\$70,399,950	\$61,902,451	\$8,497,499	13.7%	\$21,246,276	\$19,892,846	\$1,353,430	6.8%	\$91,646,226	\$81,795,297	\$9,850,929	12.0%
39	5/30/2015		\$68,547,554	\$61,264,953	\$7,282,601	11.9%	\$22,227,946	\$20,014,636	\$2,213,310	11.1%	\$90,775,500	\$81,279,589	\$9,495,911	11.7%
40	6/6/2015		\$71,254,006	\$64,019,948	\$7,234,058	11.3%	\$20,739,703	\$21,782,886	(\$1,043,184)	-4.8%	\$91,993,709	\$85,802,834	\$6,190,875	7.2%
41	6/13/2015		\$65,878,375	\$59,742,598	\$6,135,777	10.3%	\$17,216,403	\$19,736,748	(\$2,520,345)	-12.8%	\$83,094,778	\$79,479,346	\$3,615,432	4.5%
42	6/20/2015		\$66,658,742	\$59,010,863	\$7,647,879	13.0%	\$17,340,531	\$17,095,336	\$245,195	1.4%	\$83,999,273	\$76,106,199	\$7,893,074	10.4%

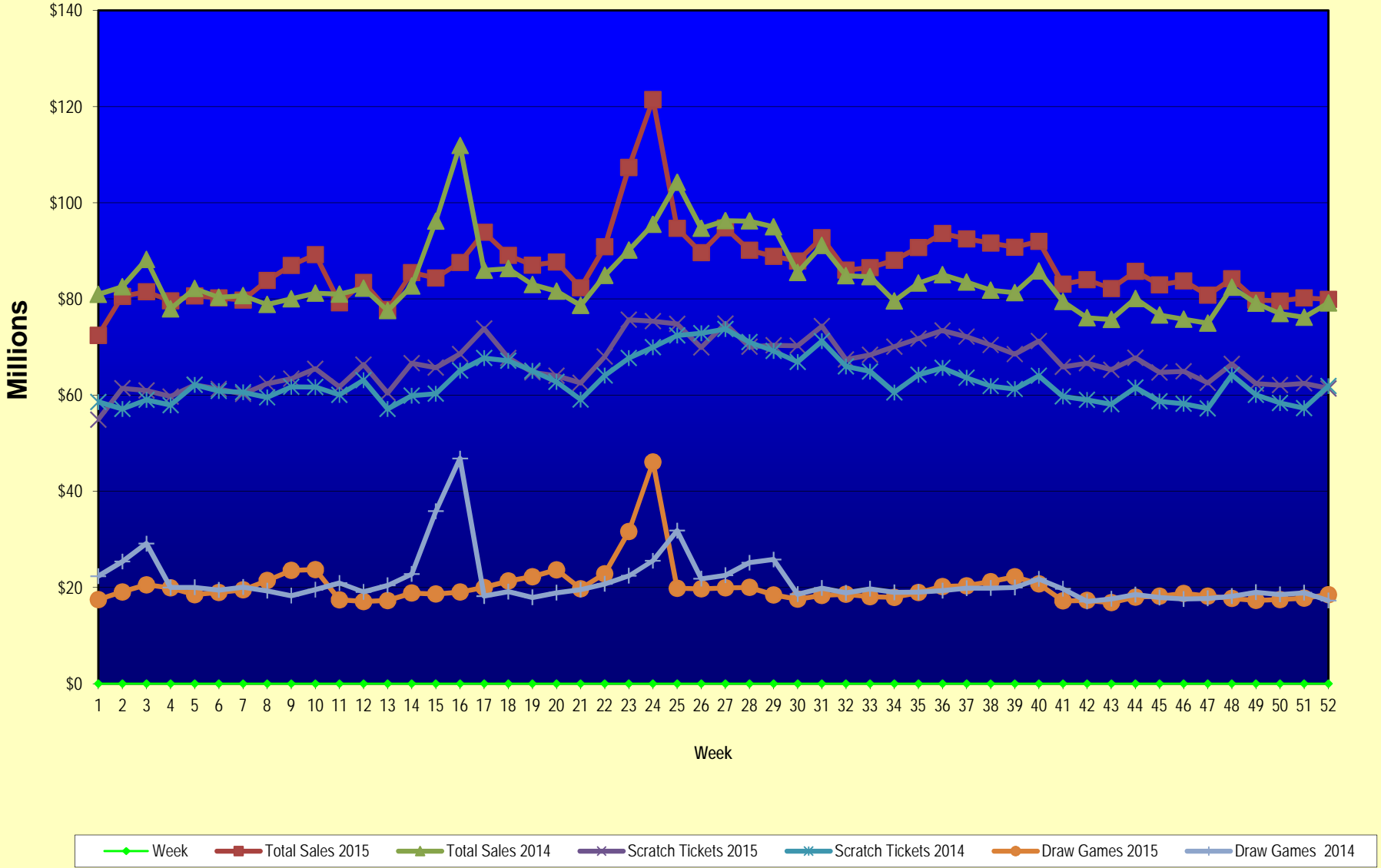
Texas Lottery Commission
Fiscal Year Over Year Change in Sales
Unaudited
FY 2015 Compared to FY 2014

			SCRATCH TICKETS				DRAW GAMES				TOTAL SALES			
FY 2015			FY 2015	FY 2014	Difference	% change - Cumulative Sales	FY 2015	FY 2014	Difference	% change - Cumulative Sales	FY 2015	FY 2014	Difference	% change - Cumulative Sales
Week	Week Ending													
43	6/27/2015		\$65,282,276	\$58,102,191	\$7,180,085	12.4%	\$16,873,368	\$17,635,736	(\$762,368)	-4.3%	\$82,155,644	\$75,737,927	\$6,417,717	8.5%
44	7/4/2015		\$67,757,752	\$61,566,071	\$6,191,681	10.1%	\$18,007,540	\$18,521,529	(\$513,990)	-2.8%	\$85,765,292	\$80,087,600	\$5,677,692	7.1%
45	7/11/2015		\$64,718,254	\$58,729,674	\$5,988,580	10.2%	\$18,203,985	\$17,913,387	\$290,599	1.6%	\$82,922,239	\$76,643,061	\$6,279,179	8.2%
46	7/18/2015		\$64,957,977	\$58,202,035	\$6,755,942	11.6%	\$18,792,785	\$17,602,032	\$1,190,754	6.8%	\$83,750,762	\$75,804,067	\$7,946,696	10.5%
47	7/25/2015		\$62,541,241	\$57,220,932	\$5,320,309	9.3%	\$18,229,965	\$17,736,889	\$493,076	2.8%	\$80,771,206	\$74,957,821	\$5,813,385	7.8%
48	8/1/2015		\$66,468,460	\$64,207,294	\$2,261,166	3.5%	\$17,742,489	\$18,208,743	(\$466,255)	-2.6%	\$84,210,949	\$82,416,037	\$1,794,912	2.2%
49	8/8/2015		\$62,412,598	\$60,066,007	\$2,346,591	3.9%	\$17,331,374	\$19,022,945	(\$1,691,571)	-8.9%	\$79,743,972	\$79,088,952	\$655,020	0.8%
50	8/15/2015		\$62,089,389	\$58,374,809	\$3,714,580	6.4%	\$17,501,599	\$18,567,246	(\$1,065,647)	-5.7%	\$79,590,988	\$76,942,055	\$2,648,934	3.4%
51	8/22/2015		\$62,437,148	\$57,277,475	\$5,159,673	9.0%	\$17,779,458	\$18,916,460	(\$1,137,003)	-6.0%	\$80,216,606	\$76,193,935	\$4,022,671	5.3%
52	8/29/2015		\$61,403,206	\$61,884,256	(\$481,050)	-0.8%	\$18,529,560	\$17,283,925	\$1,245,635	7.2%	\$79,932,766	\$79,168,181	\$764,585	1.0%
	8/31/2015 **			\$7,949,803				\$706,956				\$8,656,759		
Total thru Current Week			\$3,464,052,191	\$3,272,279,367	\$191,772,824	5.9%	\$1,045,058,656	\$1,103,660,937	(\$58,602,282)	-5.3%	\$4,509,110,847	\$4,375,940,304	\$133,170,543	3.0%
Fiscal Year Total			\$3,464,052,191	\$3,280,229,170			\$1,045,058,656	\$1,104,367,893			\$4,509,110,847	\$4,384,597,063		

* FY 15 includes 6 days

** FY 15 includes 2 days; FY 14 includes 1 day

Texas Lottery Commission Fiscal Year Over Year Change in Sales



Note: Week 1 is not a full week of sales as this report is prepared on a Fiscal Year basis.

Texas Lottery Commission
Scratch Tickets by Price Point
Sales, Prize Expense, Sales Contribution and Payout Percentage With Year Over Year Changes
Unaudited

Fiscal Year	Price Point	# of Active Games	FY Sales	% of Scratch Ticket Sales	Year over Year Change in Sales	FY Prize Expense	Year over Year Change in Prize Expense	FY Sales Contribution	Year over Year Change in Contribution	Average Prize Payout %	Year over Year Change in Payout %
2014	\$1.00	32	180,165,876	5.5%		107,942,445		72,223,431		59.9%	-1.3%
Through	\$2.00	40	371,417,434	11.4%		240,813,891		130,603,543		64.8%	-0.2%
8/30/2014	\$3.00	18	356,236,482	10.9%		233,769,047		122,467,435		65.6%	0.2%
	\$5.00	58	1,046,922,175	32.0%		710,967,817		335,954,358		67.9%	-0.2%
	\$10.00	18	634,128,410	19.4%		445,856,540		188,271,870		70.3%	-1.1%
	\$20.00	11	540,530,040	16.5%		404,714,326		135,815,714		74.9%	0.0%
	\$50.00	3	142,878,950	4.4%		110,975,425		31,903,525		77.7%	0.0%
Total		180	\$3,272,279,367			\$2,255,039,491		\$1,017,239,876		68.9%	0.0%
2015	\$1.00	25	163,549,315	4.7%		98,980,573		64,568,742		60.5%	1.0%
thru	\$2.00	37	346,995,254	10.0%		227,287,490		119,707,764		65.5%	1.0%
8/29/2015	\$3.00	16	346,073,667	10.0%		228,114,015		117,959,652		65.9%	0.4%
	\$5.00	56	1,056,613,975	30.5%		717,898,102		338,715,873		67.9%	0.0%
	\$10.00	20	735,582,050	21.2%		516,885,296		218,696,754		70.3%	-0.1%
	\$20.00	12	637,444,980	18.4%		477,916,673		159,528,307		75.0%	0.1%
	\$50.00	4	177,792,950	5.1%		138,221,456		39,571,494		77.7%	0.1%
Total		170	\$3,464,052,191			\$2,405,303,606		\$1,058,748,585		69.4%	0.8%
Variance	\$1.00	-7	-16,616,561		-9.2%	-8,961,873	-8.3%	-7,654,688	-10.6%	0.61%	
2015 to	\$2.00	-3	-24,422,180		-6.6%	-13,526,401	-5.6%	-10,895,779	-8.3%	0.67%	
2014	\$3.00	-2	-10,162,815		-2.9%	-5,655,032	-2.4%	-4,507,783	-3.7%	0.29%	
	\$5.00	-2	9,691,800		0.9%	6,930,286	1.0%	2,761,514	0.8%	0.03%	
	\$10.00	2	101,453,640		16.0%	71,028,756	15.9%	30,424,884	16.2%	-0.04%	
	\$20.00	1	96,914,940		17.9%	73,202,347	18.1%	23,712,593	17.5%	0.10%	
	\$50.00	1	34,914,000		24.4%	27,246,031	24.6%	7,667,969	24.0%	0.07%	
Total		-10	\$191,772,824		5.9%	\$150,264,114	6.7%	\$41,508,710	4.1%	0.52%	

Notes - Scratch Ticket Variances

Texas Lottery Commission
Scratch Tickets by Price Point
Sales, Prize Expense, Sales Contribution and Payout Percentage With Year Over Year Changes
Unaudited

		FY 2015	FY 2014	Difference
Sales	\$1 - \$5	\$1,913,232,211	\$1,954,741,967	-\$41,509,756
Prize Exp.	\$1 - \$5	\$1,272,280,180	\$1,293,493,200	-\$21,213,019
Sales Cont.	\$1 - \$5	\$640,952,031	\$661,248,767	-\$20,296,737
Prize Exp. %	\$1 - \$5	66.5%	66.2%	0.3%
		FY 2015	FY 2014	Difference
Sales	\$10 - \$50	\$1,550,819,980	\$1,317,537,400	\$233,282,580
Prize Exp.	\$10 - \$50	\$1,133,023,425	\$961,546,292	\$171,477,134
Sales Cont.	\$10 - \$50	\$417,796,555	\$355,991,108	\$61,805,446
Prize Exp. %	\$10 - \$50	73.1%	73.0%	0.1%
		FY 2015	FY 2014	Difference
Sales	Scratch	\$3,464,052,191	\$3,272,279,367	\$191,772,824
Prize Exp.	Scratch	\$2,405,303,606	\$2,255,039,491	\$150,264,114
Sales Cont.	Scratch	\$1,058,748,585	\$1,017,239,876	\$41,508,710
Prize Exp. %	Scratch	69.4%	68.9%	0.5%

		FY 2015	FY 2014	Difference
Sales	\$1 - \$10	\$2,648,814,261	\$2,588,870,377	\$59,943,884
Prize Exp.	\$1 - \$10	\$1,789,165,476	\$1,739,349,740	\$49,815,736
Sales Cont.	\$1 - \$10	\$859,648,785	\$849,520,637	\$10,128,148
Prize Exp. %	\$1 - \$10	67.5%	67.2%	0.4%
		FY 2015	FY 2014	Difference
Sales	\$20 - \$50	\$815,237,930	\$683,408,990	\$131,828,940
Prize Exp.	\$20 - \$50	\$616,138,130	\$515,689,752	\$100,448,378
Sales Cont.	\$20 - \$50	\$199,099,800	\$167,719,238	\$31,380,562
Prize Exp. %	\$20 - \$50	75.6%	75.5%	0.1%
		FY 2015	FY 2014	Difference
Sales	Scratch	\$3,464,052,191	\$3,272,279,367	\$191,772,824
Prize Exp.	Scratch	\$2,405,303,606	\$2,255,039,491	\$150,264,114
Sales Cont.	Scratch	\$1,058,748,585	\$1,017,239,876	\$41,508,710
Prize Exp. %	Scratch	69.4%	68.9%	0.5%

Texas Lottery Commission
Weekly Sales Summary
& Comparison to Previous Week
 Unaudited

	Week Ending 8/29/2015		Week Ending 8/22/2015			
	<u>THIS WEEK</u>	% of Sales	<u>LAST WEEK</u>	% of Sales	<u>\$ change</u>	<u>% change</u>
Total Sales	<u>\$79,932,766</u>		<u>\$80,216,606</u>		<u>-\$283,840</u>	-0.35%
Scratch Tickets	<u>\$61,403,206</u>	76.8%	<u>\$62,437,148</u>	77.8%	<u>-\$1,033,942</u>	-1.66%
Lotto	\$2,692,539	3.4%	\$2,673,773	3.3%	\$18,766	0.70%
Lotto Extra	\$447,619	0.6%	\$444,367	0.6%	\$3,252	0.73%
Pick 3	\$4,729,994	5.9%	\$4,613,737	5.8%	\$116,258	2.52%
Pick 3 Sum It Up	\$104,907	0.1%	\$102,028	0.1%	\$2,879	2.82%
Cash Five	\$908,657	1.1%	\$916,043	1.1%	-\$7,386	-0.81%
Texas Two Step	\$930,962	1.2%	\$1,172,352	1.5%	-\$241,390	-20.59%
Mega Millions	\$2,126,325	2.7%	\$1,969,306	2.5%	\$157,019	7.97%
Megaplier	\$554,797	0.7%	\$518,453	0.6%	\$36,344	7.01%
Daily 4	\$1,589,330	2.0%	\$1,599,029	2.0%	-\$9,700	-0.61%
Daily 4 Sum It Up	\$82,895	0.1%	\$84,311	0.1%	-\$1,417	-1.68%
Powerball	\$3,252,774	4.1%	\$2,655,140	3.3%	\$597,634	22.51%
Power Play	\$446,774	0.6%	\$379,899	0.5%	\$66,875	17.60%
All or Nothing	\$661,988	0.8%	\$651,020	0.8%	\$10,968	1.68%
Monopoly	\$0	0.0%	\$0	0.0%	\$0	0.00%
Total Draw Game Sales	<u>\$18,529,560</u>		<u>\$17,779,458</u>		<u>\$750,102</u>	4.22%

* Totals may not sum due to rounding.

Texas Lottery Commission
Weekly Sales Summary
Unaudited

SCRATCH TICKETS
TOP TEN SELLING GAMES

For the Week Ending: 8/29/15

Rank	Price Point	Game	Sales (Millions)
1	\$ 10	\$10 SET FOR LIFE	\$ 4.234
2	\$ 20	\$1,000,000 INSTANT CASHOUT	\$ 3.733
3	\$ 5	\$5 SET FOR LIFE	\$ 3.338
4	\$ 20	100X THE CASH	\$ 3.251
5	\$ 20	\$500,000,000 CASH	\$ 2.912
6	\$ 10	TEXAS GOLD	\$ 2.594
7	\$ 50	DIAMOND DOLLARS	\$ 2.463
8	\$ 10	CASHWORD MULTIPLIER	\$ 2.204
9	\$ 3	TEXAS LOTERIA	\$ 2.067
10	\$ 5	20X THE CASH	\$ 2.061

Texas Lottery Commission
Prize Payout Tracking Report
Unaudited

Through the Week Ending: 8/29/15

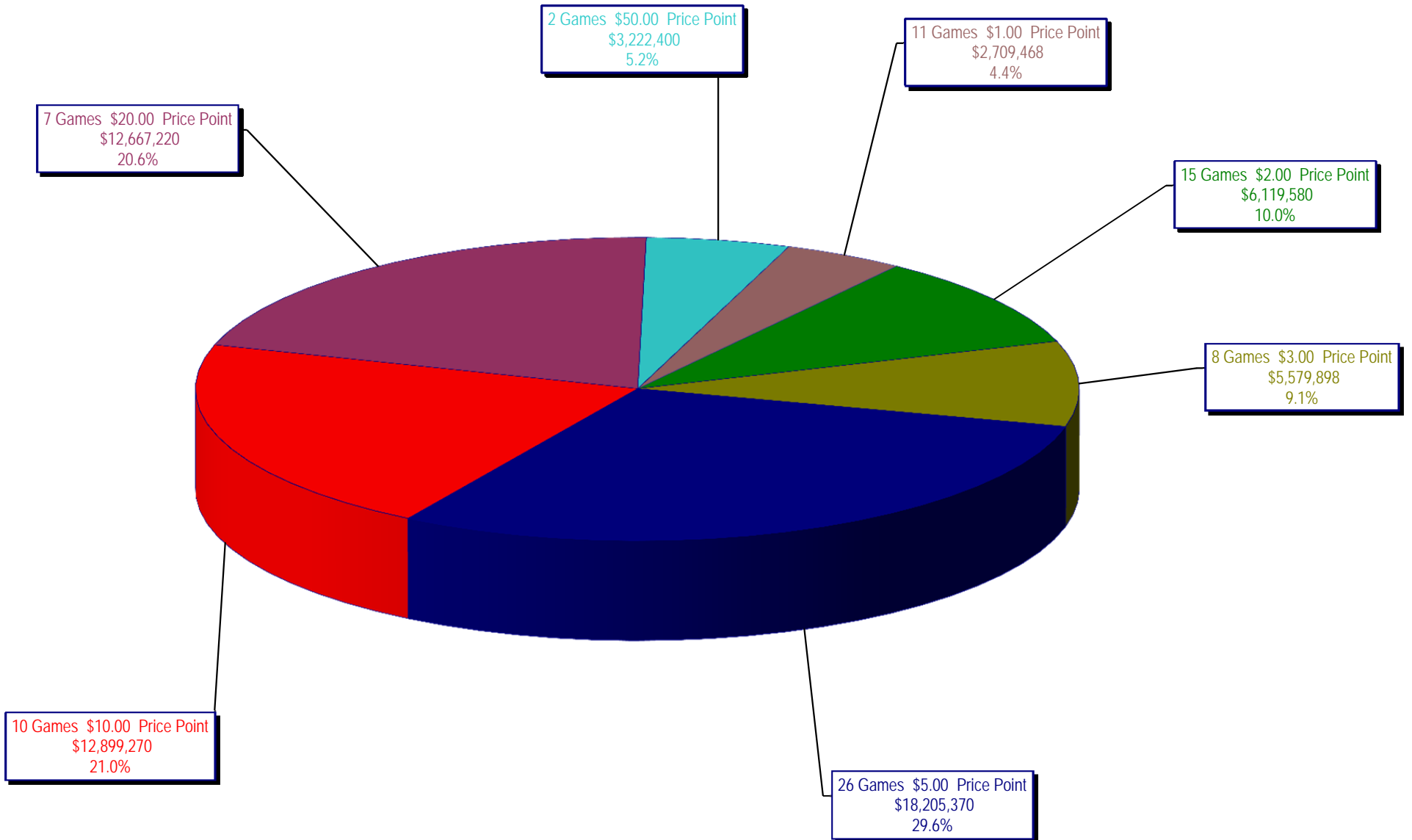
Draw Game Sales

		FY Sales Through Week Ending 8/29/2015		FY Prize Expense Through Week Ending 8/29/2015	Actual* Prize Payout	Base Payout (Prize Pool)
Lotto	\$	123,078,304	\$	62,165,635	50.51%	54.00%
Lotto Extra		19,559,137		10,782,738	55.13%	53.70%
Pick 3		250,757,664		117,275,900	46.77%	50.00%
Pick 3 Sum It Up		5,176,934		2,776,331	53.63%	50.00%
Cash Five		50,033,472		25,016,764	50.00%	50.00%
Texas Two Step		54,835,736		27,864,294	50.81%	50.00%
Mega Millions		148,344,020		75,713,187	51.04%	50.00%**
Megaplier		35,208,873		17,613,336	50.03%	N/A
Daily 4		86,317,062		38,325,675	44.40%	50.00%
Daily 4 Sum It Up		4,943,949		1,893,242	38.29%	50.00%
Powerball		200,806,614		100,492,356	50.04%	50.00%**
Power Play		25,726,740		12,875,858	50.05%	N/A
All or Nothing		37,613,842		21,098,804	56.09%	55.98%
Monopoly		2,656,310		3,617,028	136.17%	50.00%
Totals	\$	1,045,058,656	\$	517,511,148	49.52%	

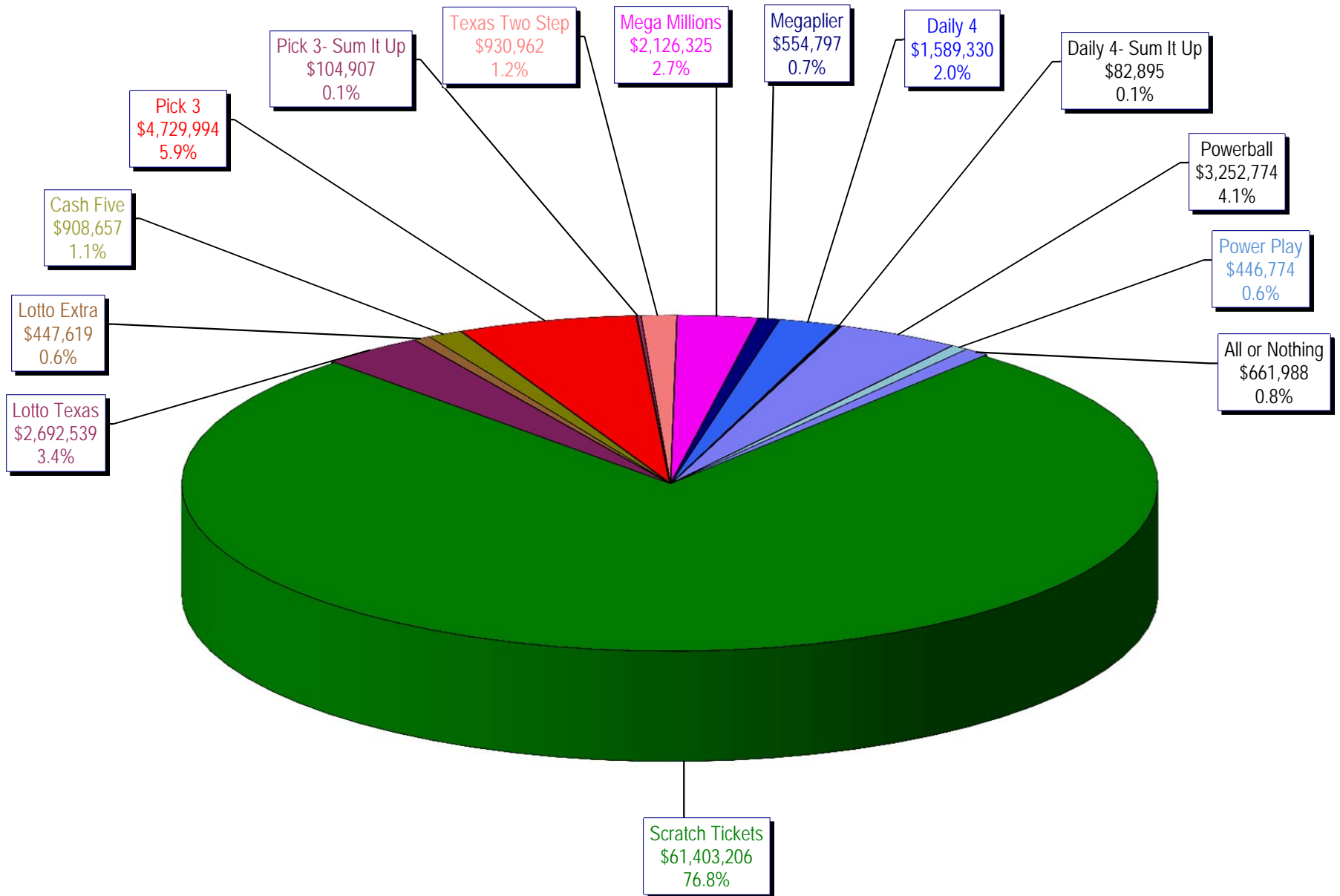
* Before Unclaimed Prizes

** Estimated; depends on # of guaranteed prizes won in Texas

Texas Lottery Commission
Scratch Ticket Sales
For the Week Ending 8/29/15
(Unaudited)



Texas Lottery Commission
All Game Sales
For the Week Ending 8/29/15
(Unaudited)



Texas Lottery Commission - Weekly Sales Summary for FY 2015 (Unaudited)

Week Ended	Scratch Tickets	New Games & Dates	Lotto Texas	Jackpot W	S	Lotto Extra	Pick 3	Pick 3 Sum It Up	Cash Five	Texas Two Step	Jackpot M	TH	Mega Millions	Jackpot T	F	Megaplier	Daily 4	Daily 4 Sum It Up	Powerball	Jackpot W	S	Power Play	All or Nothing	Monopoly	Jackpot F	Total	Per Cap.
9/06/2014*	62,861,604	1589 (\$1.N); 1592 (\$5.N) - 9/1/14	2,281,237	6	6.25	341,232	4,827,600	92,305	958,777	918,635	225	300	1,847,432	25	33	475,313	1,640,023	104,626	3,465,202	100	110	450,723	786,340			81,051,048	3.11
9/13/2014	61,436,533	0	2,299,834	6.5	6.75	344,225	4,787,666	91,850	960,067	1,214,553	425	575	1,992,737	41	52	501,468	1,571,433	97,036	3,957,407	127	149	497,718	781,088			80,533,614	3.09
9/20/2014	60,959,234	1647 (\$2.N); 1619 (\$5.N) - 9/15/14	2,307,003	7	7.25	347,119	4,624,949	89,960	952,214	1,582,291	750	925	2,149,120	62	72	528,733	1,536,913	95,355	4,985,548	171	196	597,868	770,822			81,527,128	3.13
9/27/2014	59,710,056	0	2,357,199	7.5	8.25	353,734	4,540,964	89,289	938,745	1,244,640	1,175	200	2,417,365	83	93	579,889	1,512,957	91,998	4,478,698	225	40	544,723	770,628			79,630,884	3.06
10/4/2014	62,119,854	0	2,385,322	9	9.5	360,937	4,942,321	94,197	971,047	854,141	200	200	2,966,004	105	120	692,825	1,588,795	98,392	2,443,237	50	60	348,166	786,038			80,651,275	3.09
10/11/2014	61,253,665	1608 (\$1.N); 1653 (\$5.N); 1651 (\$10.N) - 10/6/14	2,363,624	10.25	11	355,219	4,893,634	94,926	959,659	935,385	225	300	3,310,874	136	150	748,248	1,580,735	94,717	2,522,774	70	80	356,145	769,392			80,238,997	3.08
10/18/2014	60,230,048	0	2,267,582	11.5	5	343,643	4,664,420	92,081	946,399	842,255	200	225	3,839,669	166	180	841,086	1,522,939	90,307	2,937,145	90	100	398,723	752,154			79,768,450	3.06
10/25/2014	62,384,112	1655 (\$1.N); 1652 (\$2.N); 1638 (\$10.N); 1637 (\$20.N) - 10/20/14	2,201,043	5.25	5.5	330,460	4,585,640	89,676	933,854	823,726	200	225	4,755,898	200	224	990,074	1,560,894	96,697	3,449,128	110	125	444,897	746,246	467,410	15	83,859,755	3.22
11/1/2014	63,404,713	1648 (\$3.N) - 10/31/14	2,289,864	5.75	6	346,139	4,620,420	87,141	925,312	993,957	300	425	5,950,540	252	284	1,199,010	1,554,893	93,945	3,903,664	142	159	494,803	733,770	375,360	18	86,973,530	3.34
11/8/2014	65,486,719	1600 (\$2.N); 1656 (\$5.N) - 11/3/14	2,269,671	6.25	6.5	345,144	4,823,896	92,098	958,406	1,336,742	550	700	4,908,320	321	15	1,013,337	1,669,728	97,535	4,560,744	178	203	561,387	753,046	358,980	21	89,235,751	3.42
11/15/2014	61,745,521	1649 (\$5.N) - 11/13/14	2,172,758	6.75	7	326,413	4,582,139	86,975	936,682	1,604,425	900	1,100	1,863,118	20	26	471,023	1,587,677	91,661	2,341,252	40	50	329,995	730,482	325,005	15	79,195,125	3.04
11/22/2014	66,353,583	1591 (\$2.N); 1659 (\$5.N); 1650 (\$5.N) - 11/17/14	2,199,718	7.25	7.5	334,361	4,639,564	87,768	933,490	851,281	200	225	2,013,021	35	43	503,022	1,588,603	91,235	2,470,536	60	70	341,955	728,436	325,095	18	83,461,667	3.20
11/29/2014	60,471,184	0	2,214,747	7.75	8.5	337,671	4,624,896	88,080	912,039	955,695	300	400	2,040,181	52	61	503,117	1,577,411	90,692	2,632,388	80	90	362,091	681,192	282,930	21	77,774,313	2.98
12/6/2014	66,648,696	1603 (\$1.N); 1646 (\$2.N); 1645 (\$5.N) - 12/01/14	2,368,094	9	9.75	359,684	5,203,649	97,575	987,770	1,292,696	550	725	2,397,206	70	80	577,206	1,786,014	106,986	2,312,972	40	50	333,011	759,472	280,090	25	85,511,121	3.28
12/13/2014	65,708,630	1613 (\$3.N) - 12/10/14	2,390,912	10.25	11	360,296	4,965,326	90,906	968,380	860,861	200	225	2,763,671	91	102	644,993	1,730,629	100,850	2,441,310	60	70	346,197	743,438	241,830	25	84,358,228	3.24
12/20/2014	68,551,298	1664 (\$2.N); 1665 (\$5.N); 1663 (\$10.N) - 12/15/14	2,403,956	11.5	12.25	365,207	4,980,735	94,034	972,605	840,763	200	200	3,150,078	113	125	726,548	1,722,159	99,838	2,593,858	80	90	364,498	736,822	0		87,602,398	3.36
12/27/2014	73,858,618	0	2,569,741	13	13.75	386,983	4,792,061	87,561	939,518	839,204	225	300	3,523,976	142	156	786,676	1,640,658	93,236	3,244,628	100	110	431,074	671,042	0		93,864,975	3.60
1/3/2015	67,733,268	0	2,579,932	14.5	5	391,775	4,873,207	92,090	972,634	794,716	200	225	4,061,330	172	188	895,771	1,677,541	97,009	3,730,196	120	131	487,253	701,714	0		89,088,435	3.42
1/10/2015	64,745,641	1661 (\$1.N); 1609 (\$3.N); 1666 (\$20.N) - 1/5/15	2,269,384	5.25	5.5	353,334	4,633,563	89,809	965,014	839,722	200	225	5,160,810	206	221	1,101,434	1,574,307	92,418	3,969,588	146	162	507,993	708,082	(110)		87,010,988	3.34
1/17/2015	64,015,166	0	2,321,110	5.75	6	362,124	4,713,502	94,319	961,349	870,940	300	200	5,796,919	246	270	1,219,766	1,636,351	95,924	4,374,663	176	194	557,630	690,082	(60)		87,709,783	3.37
1/24/2015	62,569,156	1657 (\$2.N); 1662 (\$5.N) - 1/19/15	2,172,603	6.25	6.5	340,335	4,515,824	94,602	932,895	880,883	225	300	2,000,036	15	20	513,701	1,607,911	97,318	5,280,704	208	230	641,822	686,808	0		82,334,598	3.16
1/31/2015	68,001,588	0	2,305,997	6.75	7	365,475	4,719,942	97,954	969,989	1,217,761	425	575	2,127,914	25	32	545,728	1,700,632	97,176	7,153,312	261	289	841,856	733,290	(25)		90,878,588	3.49
2/7/2015	75,677,650	1701 (\$1.N); 1670 (\$5.N); 1620 (\$10.N) - 2/2/15	2,493,246	7.25	7.5	392,502	5,114,958	105,675	1,009,912	1,511,180	725	925	2,378,853	40	49	604,450	1,791,305	103,366	13,888,215	317	380	1,485,755	782,868	(75)		107,339,859	4.12
2/14/2015	75,368,712	0	2,732,167	7.75	8.5	422,012	5,014,682	102,578	1,010,709	874,297	200	225	2,863,303	61	74	697,827	1,735,161	98,225	27,170,708	500	40	2,547,539	822,540	0		121,460,459	4.66
2/21/2015	74,833,076	1660 (\$2.N); 1612 (\$2.N); 1676 (\$5.N) - 2/16/15	2,500,395	9.25	10	391,610	5,114,765	110,692	1,011,829	942,295	300	200	3,027,808	88	100	721,729	1,782,129	104,637	2,964,066	50	60	418,243	774,980	(5)		94,698,248	3.63
2/28/2015	69,918,013	0	2,414,393	10.75	11.25	389,658	5,048,249	107,098	982,637	840,025	225	200	3,147,289	112	127	747,651	1,771,057	100,883	2,985,120	70	80	423,838	777,470	(15)		89,653,365	3.44
3/7/2015	74,848,961	1681 (\$1.N); 1658 (\$5.N) - 3/2/15	2,604,415	12	13	416,225	5,299,039	112,941	1,049,413	906,224	225	200	2,073,964	15	20	538,327	1,832,333	103,971	3,678,412	90	100	503,040	827,806	(40)		94,795,029	3.64
3/14/2015	70,079,409	0	2,547,123	13.8	14.5	407,021	5,156,740	109,709	1,024,207	955,233	225	300	2,077,720	25	33	536,912	1,798,910	100,491	4,017,992	119	137	535,845	776,660	0		90,123,971	3.46
3/21/2015	70,368,686	1667 (\$2.N); 1683 (\$3.N); 1703 (\$5.N); 1617 (\$20.N) - 3/16/15	2,587,215	15	15.75	410,628	4,927,739	105,711	1,003,124	988,911	450	200	2,194,003	42	51	557,110	1,726,997	95,151	2,723,788	40	50	394,888	765,530	0		88,849,481	3.41
3/28/2015	70,280,600	0	2,386,826	16.25	5	380,219	4,844,148	102,062	985,160	868,267	200	225	2,032,743	59	15	524,442	1,714,476	94,175	2,535,547	40	40	367,154	759,986	0		87,875,805	3.37

