



*WEEKLY SALES SUMMARY*

Unaudited

**Week Ending: 10/11/08**

Texas Lottery Commission  
Fiscal Year to Date Sales Comparison  
Unaudited

Through the week ending 10/11/2008 (6 weeks)

Sales by Game	FY 2007 *	FY 2008 **	FY 2009	\$ Change		% Change	
				FY 2009 to FY 2007	FY 2009 to FY 2008	FY 2009 to FY 2007	FY 2009 to FY 2008
Instants	\$ 317,572,453	\$ 319,133,087	\$ 281,676,578	\$ -35,895,875	\$ -37,456,509	-11.3%	-11.7%
Lotto Texas	24,157,527	26,165,335	20,178,804	-3,978,723	-5,986,531	-16.5%	-22.9%
Pick 3	36,074,854	34,693,474	29,556,830	-6,518,024	-5,136,644	-18.1%	-14.8%
Pick 3 Sum It Up	-	-	649,674	649,674	649,674	-	-
Cash 5	10,369,148	9,555,328	7,803,002	-2,566,146	-1,752,326	-24.7%	-18.3%
Texas Two Step	8,568,834	5,717,924	5,544,731	-3,024,103	-173,193	-35.3%	-3.0%
Mega Millions	19,608,966	15,303,994	13,950,600	-5,658,366	-1,353,394	-28.9%	-8.8%
Megaplier	4,636,305	4,031,007	3,716,503	-919,802	-314,504	-19.8%	-7.8%
Daily 4	-	2,818,000	4,348,025	4,348,025	1,530,025	-	-
Daily 4 Sum It Up	-	825,961	599,274	599,274	-226,687	-	-
<b>Total</b>	<b>\$ 420,988,086</b>	<b>\$ 418,244,110</b>	<b>\$ 368,024,020</b>	<b>\$ -52,964,066</b>	<b>\$ -50,220,090</b>	<b>-12.6%</b>	<b>-12.0%</b>

\* 3 extra days in 2007 \*\* 2 extra days in 2008

Texas Lottery Commission  
Fiscal Year Over Year Change in Sales  
Unaudited  
FY 2009 Compared to FY 2008

Week	FY 2009 Week Ending	INSTANT TICKETS				ON-LINE GAMES				TOTAL SALES			
		FY 2009	FY 2008	Difference	% change - Cumulative Sales	FY 2009	FY 2008	Difference	% change - Cumulative Sales	FY 2009	FY 2008	Difference	% change - Cumulative Sales
1	9/6/2008**	\$44,890,104	\$62,376,229	(\$17,486,125)	-28.0%	\$14,722,011	\$19,372,224	(\$4,650,213)	-24.0%	\$59,612,115	\$81,748,453	(\$22,136,338)	-27.1%
2	9/13/2008	\$46,309,551	\$52,458,866	(\$6,149,315)	-20.6%	\$13,704,860	\$16,926,163	(\$3,221,303)	-21.7%	\$60,014,411	\$69,385,029	(\$9,370,618)	-20.8%
3	9/20/2008	\$42,923,171	\$49,998,934	(\$7,075,763)	-18.6%	\$12,291,263	\$15,792,283	(\$3,501,020)	-21.8%	\$55,214,434	\$65,791,217	(\$10,576,783)	-19.4%
4	9/27/2008	\$47,042,801	\$49,894,175	(\$2,851,374)	-15.6%	\$14,222,339	\$14,800,514	(\$578,175)	-17.9%	\$61,265,140	\$64,694,689	(\$3,429,549)	-16.2%
5	10/4/2008	\$50,747,162	\$53,486,863	(\$2,739,701)	-13.5%	\$15,784,472	\$16,618,430	(\$833,958)	-15.3%	\$66,531,634	\$70,105,293	(\$3,573,659)	-14.0%
6	10/11/2008	\$49,763,789	\$50,918,020	(\$1,154,231)	-11.7%	\$15,622,498	\$15,601,410	\$21,088	-12.9%	\$65,386,287	\$66,519,430	(\$1,133,143)	-12.0%
7	10/18/2008		\$50,532,253				\$15,682,666				\$66,214,919		
8	10/25/2008		\$50,347,450				\$15,586,516				\$65,933,966		
9	11/1/2008		\$53,953,733				\$16,775,983				\$70,729,716		
10	11/8/2008		\$53,635,090				\$15,912,791				\$69,547,881		
11	11/15/2008		\$51,254,401				\$15,797,076				\$67,051,477		
12	11/22/2008		\$50,897,817				\$15,801,720				\$66,699,537		
13	11/29/2008		\$53,913,115				\$17,055,505				\$70,968,620		
14	12/6/2008		\$55,702,697				\$17,900,717				\$73,603,414		
15	12/13/2008		\$53,703,516				\$17,820,841				\$71,524,357		
16	12/20/2008		\$57,592,769				\$17,436,233				\$75,029,002		
17	12/27/2008		\$57,696,003				\$14,743,680				\$72,439,683		
18	1/3/2009		\$57,935,952				\$15,704,450				\$73,640,402		
19	1/10/2009		\$55,360,542				\$15,691,540				\$71,052,082		
20	1/17/2009		\$54,920,166				\$16,259,669				\$71,179,835		
21	1/24/2009		\$54,439,890				\$16,691,724				\$71,131,614		
22	1/31/2009		\$57,464,382				\$17,968,227				\$75,432,609		
23	2/7/2009		\$60,715,019				\$20,097,338				\$80,812,357		
24	2/14/2009		\$57,093,143				\$22,179,908				\$79,273,051		
25	2/21/2009		\$57,627,047				\$27,230,539				\$84,857,586		
26	2/28/2009		\$55,591,667				\$17,016,118				\$72,607,785		
27	3/7/2009		\$56,837,481				\$16,690,193				\$73,527,674		
28	3/14/2009		\$54,587,112				\$16,448,165				\$71,035,277		
29	3/21/2009		\$53,098,937				\$16,639,184				\$69,738,121		
30	3/28/2009		\$53,933,689				\$17,698,625				\$71,632,314		
31	4/4/2009		\$57,598,982				\$17,665,411				\$75,264,393		
32	4/11/2009		\$53,954,185				\$15,860,784				\$69,814,969		
33	4/18/2009		\$53,946,736				\$16,452,676				\$70,399,412		
34	4/25/2009		\$51,533,006				\$16,873,949				\$68,406,955		
35	5/2/2009		\$53,250,568				\$18,202,103				\$71,452,671		
36	5/9/2009		\$54,060,849				\$18,422,562				\$72,483,411		
37	5/16/2009		\$54,010,641				\$20,728,360				\$74,739,001		
38	5/23/2009		\$50,377,032				\$15,461,384				\$65,838,416		
39	5/30/2009		\$49,545,080				\$15,175,370				\$64,720,450		
40	6/6/2009		\$53,702,986				\$15,982,166				\$69,685,152		

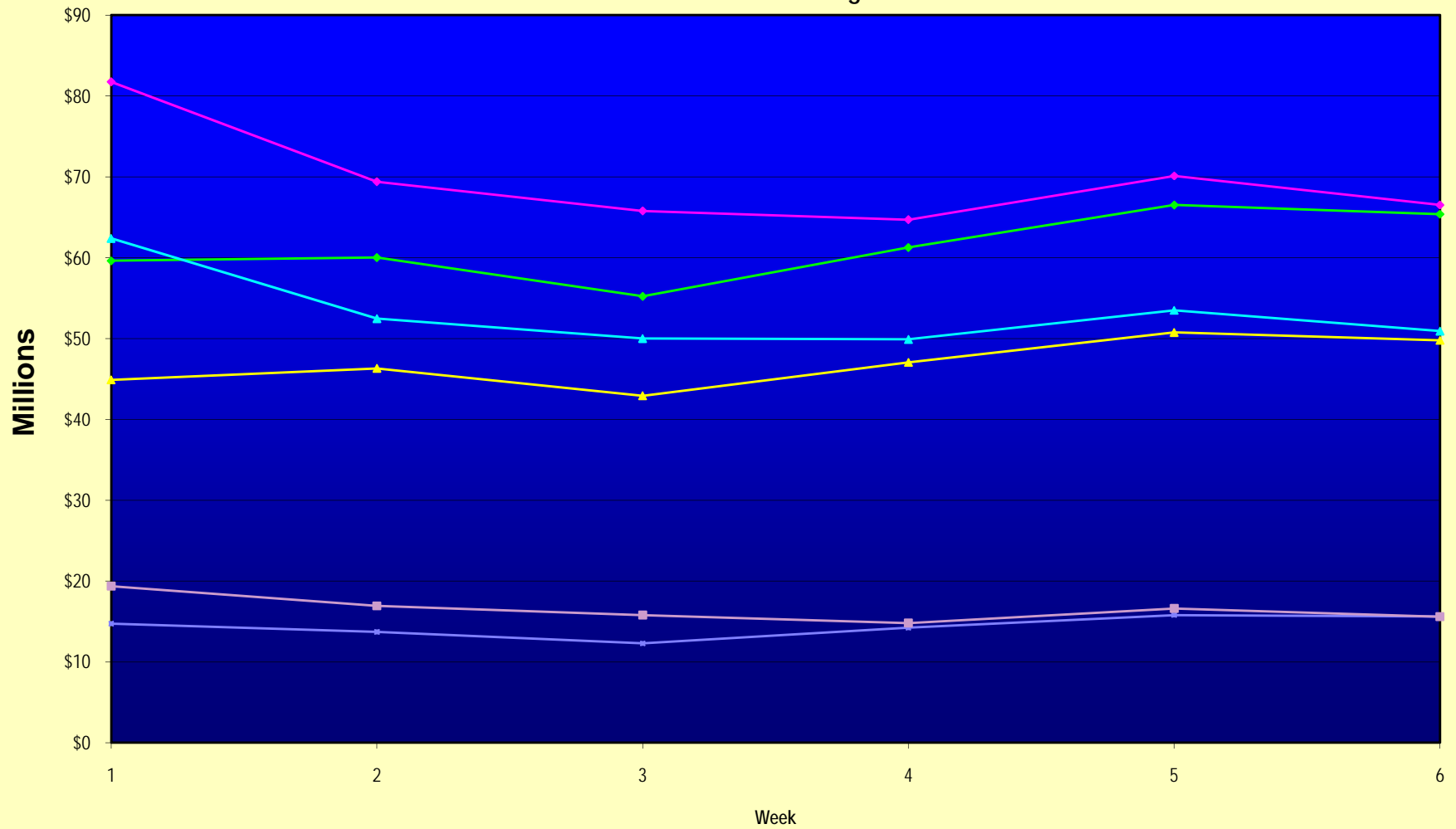
Note: Week 1 is not a full week of sales as this report is prepared on a Fiscal Year basis.

Texas Lottery Commission  
Fiscal Year Over Year Change in Sales  
Unaudited  
FY 2009 Compared to FY 2008

Week	FY 2009 Week Ending	INSTANT TICKETS				ON-LINE GAMES				TOTAL SALES			
		FY 2009	FY 2008	Difference	% change - Cumulative Sales	FY 2009	FY 2008	Difference	% change - Cumulative Sales	FY 2009	FY 2008	Difference	% change - Cumulative Sales
41	6/13/2009		\$51,171,483				\$16,589,087				\$67,760,570		
42	6/20/2009		\$50,650,362				\$15,728,484				\$66,378,846		
43	6/27/2009		\$49,258,266				\$15,250,905				\$64,509,171		
44	7/4/2009		\$53,393,355				\$16,270,619				\$69,663,974		
45	7/11/2009		\$53,127,756				\$16,914,922				\$70,042,678		
46	7/18/2009		\$51,593,146				\$17,752,738				\$69,345,884		
47	7/25/2009		\$49,902,181				\$16,706,145				\$66,608,326		
48	8/1/2009		\$49,605,420				\$16,254,383				\$65,859,803		
49	8/8/2009		\$50,961,907				\$16,770,496				\$67,732,403		
50	8/15/2009		\$49,452,511				\$16,749,487				\$66,201,998		
51	8/22/2009		\$49,249,518				\$17,286,302				\$66,535,820		
52	8/29/2009		\$49,468,928				\$18,109,997				\$67,578,925		
53	9/5/2009		\$6,054,239				\$493,109				\$6,547,348		
Total thru Current Week		\$281,676,578	\$319,133,087	(\$37,456,509)	-11.7%	\$86,347,442	\$99,111,023	(\$12,763,581)	-12.9%	\$368,024,020	\$418,244,110	(\$50,220,090)	-12.0%
Fiscal Year Total		\$281,676,578	\$2,783,836,095			\$86,347,442	\$887,641,858			\$368,024,020	\$3,671,477,953		

\*\* FY 2009 includes 6 days; FY 2008 includes 8 days

### Texas Lottery Commission Fiscal Year Over Year Change in Sales



◆ Total Sales 2009   
 ◆ Total Sales 2008   
 ▲ Instant Tickets 2009   
 ▲ Instant Tickets 2008   
 ■ On-Line Games 2009   
 ■ On-Line Games 2008

Note: Week 1 is not a full week of sales as this report is prepared on a Fiscal Year basis.

Texas Lottery Commission  
Instant Tickets by Price Point  
Sales, Prize Expense, Sales Contribution and Payout Percentage With Year Over Year Changes  
Unaudited

Fiscal Year	Price Point	# of Active Games	FY Sales	Year over Year Change in Sales	FY Prize Expense	Year over Year Change in Prize Expense	FY Sales Contribution	Year over Year Change in Contribution	Average Prize Payout %
2008	\$1.00	27	\$29,452,768		\$17,702,552		\$11,750,216		60.1%
thru	\$2.00	27	\$54,529,482		\$35,456,464		\$19,073,018		65.0%
10/13/2007	\$3.00	8	\$25,887,552		\$17,046,949		\$8,840,603		65.8%
	\$5.00	24	\$86,362,175		\$58,499,509		\$27,862,666		67.7%
	\$7.00	8	\$20,203,554		\$13,729,361		\$6,474,193		68.0%
	\$10.00	11	\$47,451,826		\$33,215,184		\$14,236,642		70.0%
	\$20.00	4	\$13,561,660		\$9,761,587		\$3,800,073		72.0%
	\$25.00	2	\$18,483,450		\$13,415,426		\$5,068,024		72.6%
	\$30.00	2	\$4,952,070		\$3,579,005		\$1,373,065		72.3%
	\$50.00	1	\$18,248,550		\$13,160,780		\$5,087,770		72.1%
<b>Total</b>		<b>114</b>	<b>\$319,133,087</b>		<b>\$215,566,817</b>		<b>\$103,566,270</b>		<b>67.5%</b>
2009	\$1.00	19	23,416,245		14,133,388		\$9,282,857		60.4%
thru	\$2.00	19	51,568,034		33,433,774		\$18,134,260		64.8%
10/11/2008	\$3.00	9	30,834,627		20,246,390		\$10,588,237		65.7%
	\$5.00	23	85,972,895		58,482,316		\$27,490,579		68.0%
	\$7.00	4	9,222,647		6,275,224		\$2,947,423		68.0%
	\$10.00	11	36,470,340		25,524,607		\$10,945,733		70.0%
	\$20.00	5	25,880,400		18,572,649		\$7,307,751		71.8%
	\$25.00	1	1,702,850		1,237,746		\$465,104		72.7%
	\$30.00	2	2,906,190		2,105,961		\$800,229		72.5%
	\$50.00	3	13,702,350		9,907,636		\$3,794,714		72.3%
<b>Total</b>		<b>96</b>	<b>\$281,676,578</b>		<b>\$189,919,692</b>		<b>\$91,756,886</b>		<b>67.4%</b>
Variance	\$1.00	-8	-\$6,036,523	-20.5%	-\$3,569,165	-20.2%	-\$2,467,358	-21.0%	0.25%
2009 to 2008	\$2.00	-8	-\$2,961,448	-5.4%	-\$2,022,691	-5.7%	-\$938,757	-4.9%	-0.19%
	\$3.00	1	\$4,947,075	19.1%	\$3,199,441	18.8%	\$1,747,634	19.8%	-0.19%
	\$5.00	-1	-\$389,280	-0.5%	-\$17,192	0.0%	-\$372,088	-1.3%	0.29%
	\$7.00	-4	-\$10,980,907	-54.4%	-\$7,454,137	-54.3%	-\$3,526,770	-54.5%	0.09%
	\$10.00	0	-\$10,981,486	-23.1%	-\$7,690,576	-23.2%	-\$3,290,910	-23.1%	-0.01%
	\$20.00	1	\$12,318,740	90.8%	\$8,811,062	90.3%	\$3,507,678	92.3%	-0.22%
	\$25.00	-1	-\$16,780,600	-90.8%	-\$12,177,679	-90.8%	-\$4,602,921	-90.8%	0.11%
	\$30.00	0	-\$2,045,880	-41.3%	-\$1,473,043	-41.2%	-\$572,837	-41.7%	0.19%
	\$50.00	2	-\$4,546,200	n/a	-\$3,253,144	n/a	-\$1,293,056	n/a	0.19%
<b>Total</b>		<b>-18</b>	<b>-\$37,456,509</b>	<b>-11.7%</b>	<b>-\$25,647,125</b>	<b>-11.9%</b>	<b>-\$11,809,384</b>	<b>-11.4%</b>	<b>-0.08%</b>

Texas Lottery Commission  
Instant Tickets by Price Point  
Sales, Prize Expense, Sales Contribution and Payout Percentage With Year Over Year Changes  
Unaudited

Notes - Instant Ticket Variances

		FY 2009	FY 2008	Difference
Sales	\$1 - \$7	\$201,014,448	\$216,435,531	-\$15,421,083
Prize Exp.	\$1 - \$7	\$132,571,091	\$142,434,836	-\$9,863,745
Sales Cont.	\$1 - \$7	\$68,443,357	\$74,000,695	-\$5,557,338
Prize Exp. %	\$1 - \$7	66.0%	65.8%	0.1%
		FY 2009	FY 2008	Difference
Sales	\$10 - \$50	\$80,662,130	\$102,697,556	-\$22,035,426
Prize Exp.	\$10 - \$50	\$57,348,601	\$73,131,981	-\$15,783,381
Sales Cont.	\$10 - \$50	\$23,313,529	\$29,565,575	-\$6,252,045
Prize Exp. %	\$10 - \$50	71.1%	71.2%	-0.1%
		FY 2009	FY 2008	Difference
Sales	Instant	\$281,676,578	\$319,133,087	-\$37,456,509
Prize Exp.	Instant	\$189,919,692	\$215,566,817	-\$25,647,125
Sales Cont.	Instant	\$91,756,886	\$103,566,270	-\$11,809,384
Prize Exp. %	Instant	67.4%	67.5%	-0.1%

		FY 2009	FY 2008	Difference
Sales	\$1 - \$10	\$237,484,788	\$263,887,357	-\$26,402,569
Prize Exp.	\$1 - \$10	\$158,095,699	\$175,650,020	-\$17,554,321
Sales Cont.	\$1 - \$10	\$79,389,089	\$88,237,337	-\$8,848,248
Prize Exp. %	\$1 - \$10	66.6%	66.6%	0.0%
		FY 2009	FY 2008	Difference
Sales	\$20 - \$50	\$44,191,790	\$55,245,730	-\$11,053,940
Prize Exp.	\$20 - \$50	\$31,823,993	\$39,916,798	-\$8,092,804
Sales Cont.	\$20 - \$50	\$12,367,797	\$15,328,932	-\$2,961,136
Prize Exp. %	\$20 - \$50	72.0%	72.3%	-0.2%
		FY 2009	FY 2008	Difference
Sales	Instant	\$281,676,578	\$319,133,087	-\$37,456,509
Prize Exp.	Instant	\$189,919,692	\$215,566,817	-\$25,647,125
Sales Cont.	Instant	\$91,756,886	\$103,566,270	-\$11,809,384
Prize Exp. %	Instant	67.4%	67.5%	-0.1%

Texas Lottery Commission  
**Weekly Sales Summary**  
**& Comparison to Previous Week**  
 Unaudited

	Week Ending 10/11/08		Week Ending 10/04/08			
	<u>THIS WEEK</u>	% of Sales	<u>LAST WEEK</u>	% of Sales	<u>\$ change</u>	<u>% change</u>
Total Sales	<u>\$65,386,287</u>		<u>\$66,531,634</u>		<u>-\$1,145,348</u>	-1.72%
Instant Tickets	<u>\$49,763,789</u>	76.1%	<u>\$50,747,162</u>	76.3%	<u>-\$983,373</u>	-1.94%
Lotto Texas	\$3,732,365	5.7%	\$3,675,683	5.5%	\$56,682	1.54%
Pick 3	\$5,287,094	8.1%	\$5,305,711	8.0%	-\$18,617	-0.35%
Pick 3 Sum It Up	\$114,666	0.2%	\$116,333	0.2%	-\$1,667	-1.43%
Cash 5	\$1,370,334	2.1%	\$1,369,040	2.1%	\$1,294	0.09%
Texas Two Step	\$1,305,250	2.0%	\$1,074,874	1.6%	\$230,376	21.43%
Mega Millions	\$2,306,070	3.5%	\$2,671,927	4.0%	-\$365,857	-13.69%
Megaplier	\$622,120	1.0%	\$693,845	1.0%	-\$71,725	-10.34%
Daily 4	\$778,204	1.2%	\$770,783	1.2%	\$7,422	0.96%
Daily 4 Sum It Up	\$106,395	0.2%	\$106,277	0.2%	\$118	0.11%
Total Online Sales	<u>\$15,622,498</u>		<u>\$15,784,472</u>		<u>-\$161,975</u>	-1.03%

\* Totals may not sum due to rounding.



Texas Lottery Commission  
Weekly Sales Summary  
Unaudited

INSTANT TICKETS  
TOP TEN SELLING GAMES

For the Week Ending : 10/11/08

Rank	Price Point	Game	Sales (Millions)
1	\$ 10	MATCH FOR CASH	\$ 2.623
2	\$ 3	BONUS CASHWORD	\$ 2.544
3	\$ 5	THE TEXAS RANGERS LIMITED EDITION SILVER	\$ 2.544
4	\$ 20	\$1 MILLION DOUBLE ACTION	\$ 2.367
5	\$ 5	JEWELS OF THE NILE	\$ 2.225
6	\$ 10	SET FOR LIFE	\$ 2.032
7	\$ 50	\$130,000,000 PLATINUM PAYOUT	\$ 2.004
8	\$ 5	2008 STATE FAIR OF TEXAS	\$ 1.971
9	\$ 2	BREAK THE BANK	\$ 1.596
10	\$ 2	MONSTER MONEY	\$ 1.545

Texas Lottery Commission  
Prize Payout Tracking Report  
Unaudited

Through Week Ending 10/11/08

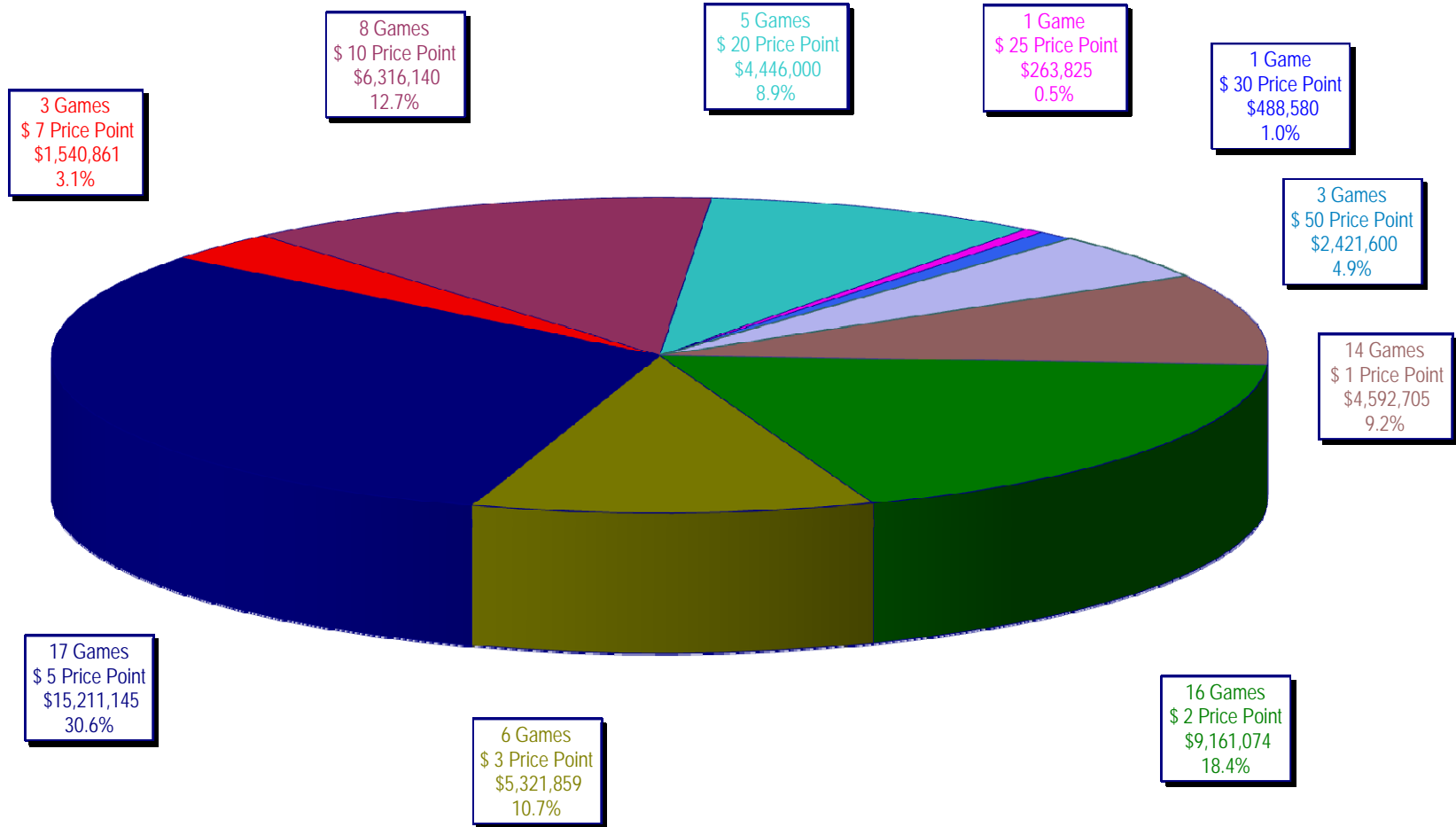
On-Line Sales

		FY Sales Through Week Ending 10/11/2008		FY Prize Expense Through Week Ending 10/11/2008	Actual* Prize Payout	Base Payout (Prize Pool)
Lotto	\$	20,178,804	\$	10,091,355	50.01%	50.00%
Pick 3		29,556,830		13,919,200	47.09%	50.00%
Pick 3 Sum It Up		649,674		296,604	45.65%	50.00%
Cash 5		7,803,002		3,971,175	50.89%	50.00%
Texas Two-Step		5,544,731		2,786,916	50.26%	50.00%
Mega Millions		13,950,600		6,741,626	48.32%	50.00%**
Megaplier		3,716,503		1,012,583	27.25%	N/A
Daily 4		4,348,025		1,765,775	40.61%	50.00%
Daily 4-Sum It Up		599,274		216,890	36.19%	50.00%
<b>Totals</b>	\$	<b>86,347,442</b>	\$	<b>40,802,125</b>	<b>47.25%</b>	

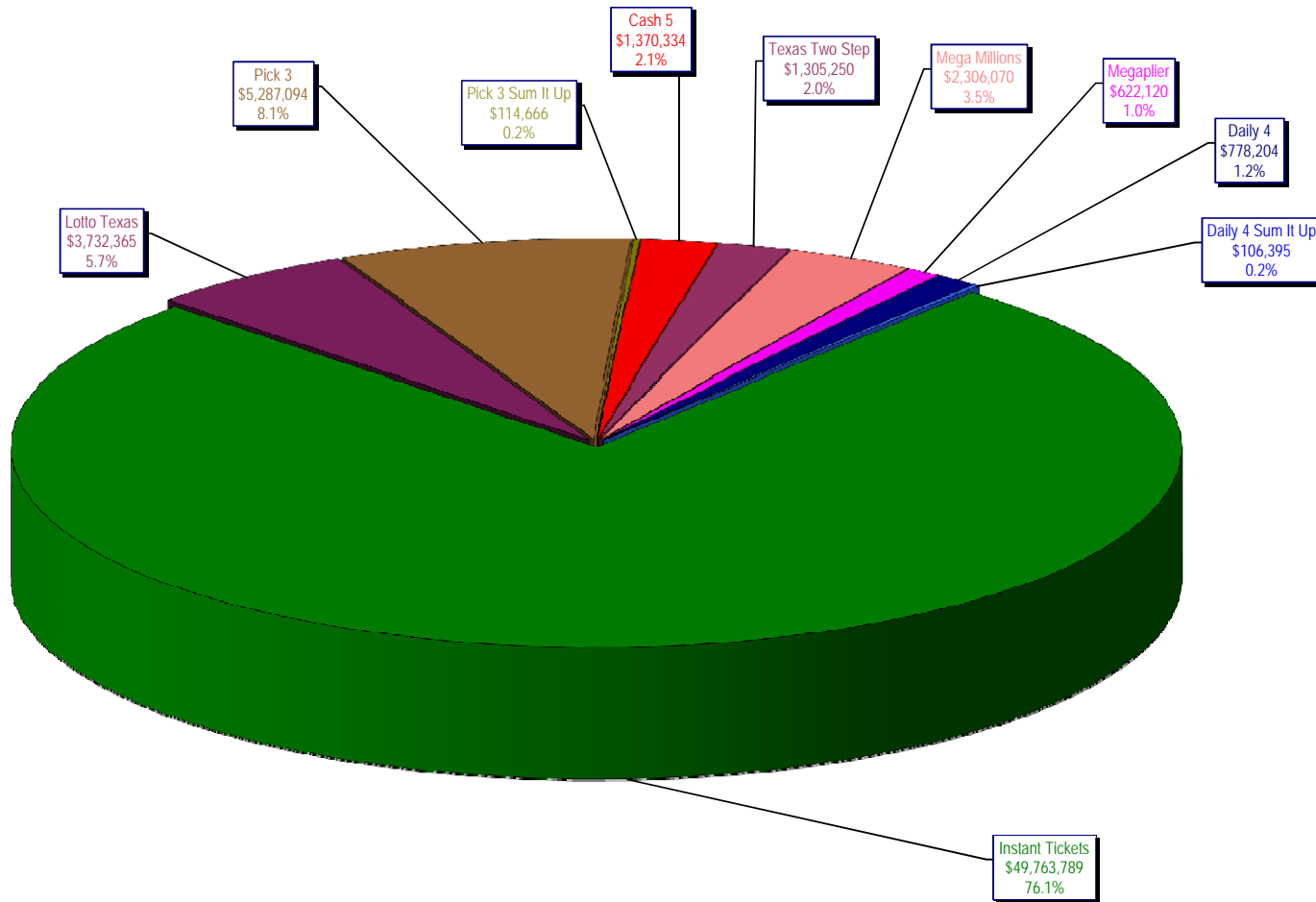
\* Before Unclaimed Prizes

\*\* Estimated; depends on # of guaranteed prizes won in Texas

Texas Lottery Commission  
Instant Ticket Sales  
For the Week Ending 10/11/2008  
(Unaudited)



Texas Lottery Commission  
**All Game Sales**  
For the Week Ending 10/11/2008  
(Unaudited)



\* Totals may not sum due to rounding.

