



*WEEKLY SALES SUMMARY*

Unaudited

**Week Ending: 10/18/08**

Texas Lottery Commission  
Fiscal Year to Date Sales Comparison  
Unaudited

Through the week ending 10/18/2008 (7 weeks)

Sales by Game	FY 2007 *	FY 2008 **	FY 2009	\$ Change		% Change	
				FY 2009 to FY 2007	FY 2009 to FY 2008	FY 2009 to FY 2007	FY 2009 to FY 2008
Instants	\$ 367,199,413	\$ 369,665,340	\$ 330,975,631	\$ -36,223,782	\$ -38,689,709	-9.9%	-10.5%
Lotto Texas	28,108,561	29,967,320	23,959,242	-4,149,319	-6,008,078	-14.8%	-20.0%
Pick 3	41,679,962	39,753,869	34,706,088	-6,973,874	-5,047,781	-16.7%	-12.7%
Pick 3 Sum It Up	-	-	759,204	759,204	759,204	-	-
Cash 5	12,039,682	11,005,886	9,158,603	-2,881,079	-1,847,283	-23.9%	-16.8%
Texas Two Step	9,571,894	6,405,281	6,286,580	-3,285,314	-118,701	-34.3%	-1.9%
Mega Millions	21,933,192	17,728,333	16,451,244	-5,481,948	-1,277,089	-25.0%	-7.2%
Megaplier	5,231,837	4,665,838	4,368,701	-863,136	-297,137	-16.5%	-6.4%
Daily 4	-	4,048,918	5,124,391	5,124,391	1,075,473	-	-
Daily 4 Sum It Up	-	1,218,244	701,330	701,330	-516,914	-	-
<b>Total</b>	<b>\$ 485,764,541</b>	<b>\$ 484,459,029</b>	<b>\$ 432,491,013</b>	<b>\$ -53,273,528</b>	<b>\$ -51,968,016</b>	<b>-11.0%</b>	<b>-10.7%</b>

\* 3 extra days in 2007    \*\* 2 extra days in 2008

Texas Lottery Commission  
Fiscal Year Over Year Change in Sales  
Unaudited  
FY 2009 Compared to FY 2008

Week	FY 2009 Week Ending	INSTANT TICKETS				ON-LINE GAMES				TOTAL SALES			
		FY 2009	FY 2008	Difference	% change - Cumulative Sales	FY 2009	FY 2008	Difference	% change - Cumulative Sales	FY 2009	FY 2008	Difference	% change - Cumulative Sales
1	9/6/2008**	\$44,890,104	\$62,376,229	(\$17,486,125)	-28.0%	\$14,722,011	\$19,372,224	(\$4,650,213)	-24.0%	\$59,612,115	\$81,748,453	(\$22,136,338)	-27.1%
2	9/13/2008	\$46,309,551	\$52,458,866	(\$6,149,315)	-20.6%	\$13,704,860	\$16,926,163	(\$3,221,303)	-21.7%	\$60,014,411	\$69,385,029	(\$9,370,618)	-20.8%
3	9/20/2008	\$42,923,171	\$49,998,934	(\$7,075,763)	-18.6%	\$12,291,263	\$15,792,283	(\$3,501,020)	-21.8%	\$55,214,434	\$65,791,217	(\$10,576,783)	-19.4%
4	9/27/2008	\$47,042,801	\$49,894,175	(\$2,851,374)	-15.6%	\$14,222,339	\$14,800,514	(\$578,175)	-17.9%	\$61,265,140	\$64,694,689	(\$3,429,549)	-16.2%
5	10/4/2008	\$50,747,162	\$53,486,863	(\$2,739,701)	-13.5%	\$15,784,472	\$16,618,430	(\$833,958)	-15.3%	\$66,531,634	\$70,105,293	(\$3,573,659)	-14.0%
6	10/11/2008	\$49,763,789	\$50,918,020	(\$1,154,231)	-11.7%	\$15,622,498	\$15,601,410	\$21,088	-12.9%	\$65,386,287	\$66,519,430	(\$1,133,143)	-12.0%
7	10/18/2008	\$49,299,053	\$50,532,253	(\$1,233,200)	-10.5%	\$15,167,940	\$15,682,666	(\$514,726)	-11.6%	\$64,466,993	\$66,214,919	(\$1,747,926)	-10.7%
8	10/25/2008		\$50,347,450				\$15,586,516				\$65,933,966		
9	11/1/2008		\$53,953,733				\$16,775,983				\$70,729,716		
10	11/8/2008		\$53,635,090				\$15,912,791				\$69,547,881		
11	11/15/2008		\$51,254,401				\$15,797,076				\$67,051,477		
12	11/22/2008		\$50,897,817				\$15,801,720				\$66,699,537		
13	11/29/2008		\$53,913,115				\$17,055,505				\$70,968,620		
14	12/6/2008		\$55,702,697				\$17,900,717				\$73,603,414		
15	12/13/2008		\$53,703,516				\$17,820,841				\$71,524,357		
16	12/20/2008		\$57,592,769				\$17,436,233				\$75,029,002		
17	12/27/2008		\$57,696,003				\$14,743,680				\$72,439,683		
18	1/3/2009		\$57,935,952				\$15,704,450				\$73,640,402		
19	1/10/2009		\$55,360,542				\$15,691,540				\$71,052,082		
20	1/17/2009		\$54,920,166				\$16,259,669				\$71,179,835		
21	1/24/2009		\$54,439,890				\$16,691,724				\$71,131,614		
22	1/31/2009		\$57,464,382				\$17,968,227				\$75,432,609		
23	2/7/2009		\$60,715,019				\$20,097,338				\$80,812,357		
24	2/14/2009		\$57,093,143				\$22,179,908				\$79,273,051		
25	2/21/2009		\$57,627,047				\$27,230,539				\$84,857,586		
26	2/28/2009		\$55,591,667				\$17,016,118				\$72,607,785		
27	3/7/2009		\$56,837,481				\$16,690,193				\$73,527,674		
28	3/14/2009		\$54,587,112				\$16,448,165				\$71,035,277		
29	3/21/2009		\$53,098,937				\$16,639,184				\$69,738,121		
30	3/28/2009		\$53,933,689				\$17,698,625				\$71,632,314		
31	4/4/2009		\$57,598,982				\$17,665,411				\$75,264,393		
32	4/11/2009		\$53,954,185				\$15,860,784				\$69,814,969		
33	4/18/2009		\$53,946,736				\$16,452,676				\$70,399,412		
34	4/25/2009		\$51,533,006				\$16,873,949				\$68,406,955		
35	5/2/2009		\$53,250,568				\$18,202,103				\$71,452,671		
36	5/9/2009		\$54,060,849				\$18,422,562				\$72,483,411		
37	5/16/2009		\$54,010,641				\$20,728,360				\$74,739,001		
38	5/23/2009		\$50,377,032				\$15,461,384				\$65,838,416		
39	5/30/2009		\$49,545,080				\$15,175,370				\$64,720,450		
40	6/6/2009		\$53,702,986				\$15,982,166				\$69,685,152		

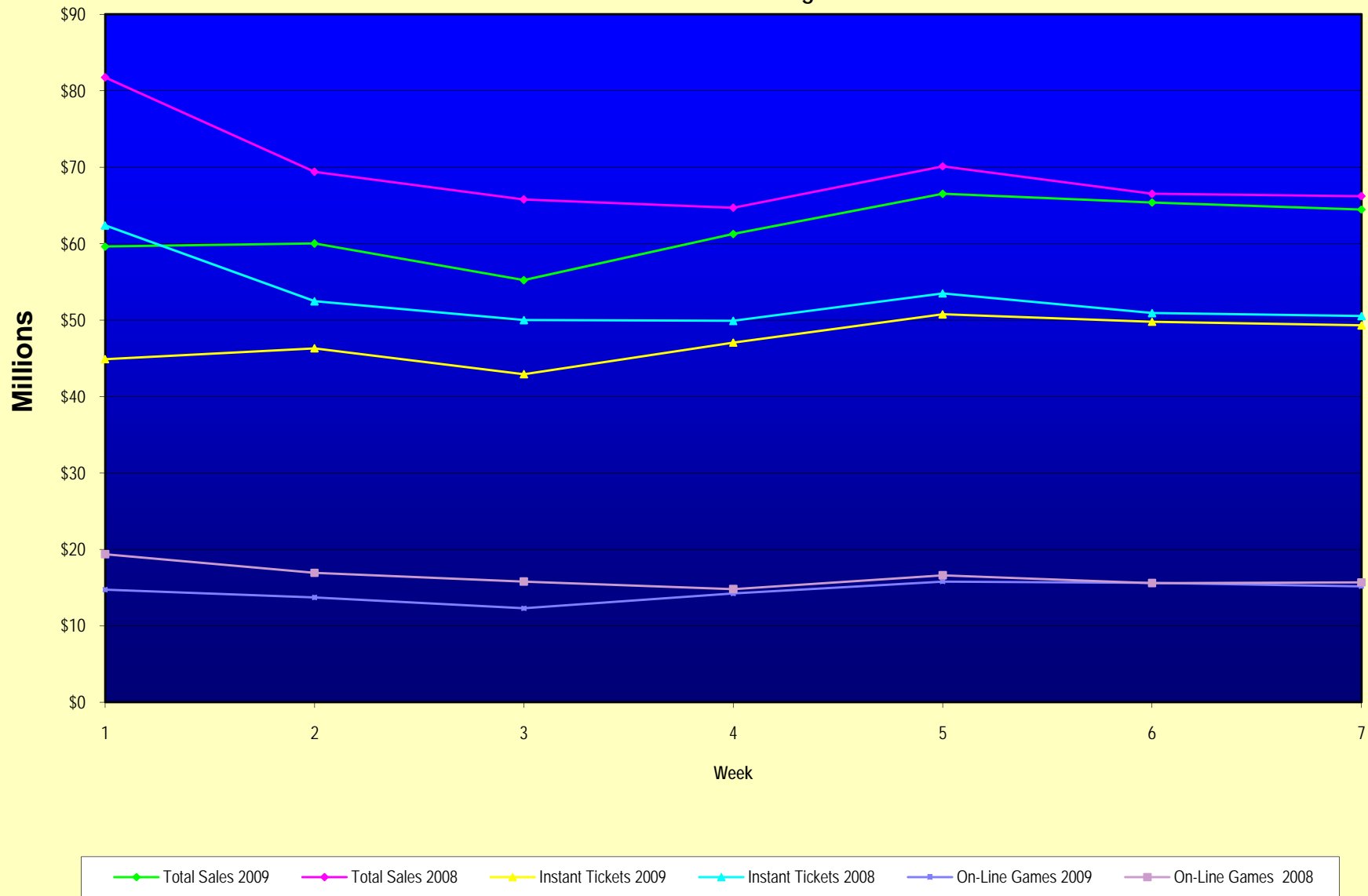
Note: Week 1 is not a full week of sales as this report is prepared on a Fiscal Year basis.

Texas Lottery Commission  
Fiscal Year Over Year Change in Sales  
Unaudited  
FY 2009 Compared to FY 2008

Week	FY 2009 Week Ending	INSTANT TICKETS				ON-LINE GAMES				TOTAL SALES			
		FY 2009	FY 2008	Difference	% change - Cumulative Sales	FY 2009	FY 2008	Difference	% change - Cumulative Sales	FY 2009	FY 2008	Difference	% change - Cumulative Sales
41	6/13/2009		\$51,171,483				\$16,589,087				\$67,760,570		
42	6/20/2009		\$50,650,362				\$15,728,484				\$66,378,846		
43	6/27/2009		\$49,258,266				\$15,250,905				\$64,509,171		
44	7/4/2009		\$53,393,355				\$16,270,619				\$69,663,974		
45	7/11/2009		\$53,127,756				\$16,914,922				\$70,042,678		
46	7/18/2009		\$51,593,146				\$17,752,738				\$69,345,884		
47	7/25/2009		\$49,902,181				\$16,706,145				\$66,608,326		
48	8/1/2009		\$49,605,420				\$16,254,383				\$65,859,803		
49	8/8/2009		\$50,961,907				\$16,770,496				\$67,732,403		
50	8/15/2009		\$49,452,511				\$16,749,487				\$66,201,998		
51	8/22/2009		\$49,249,518				\$17,286,302				\$66,535,820		
52	8/29/2009		\$49,468,928				\$18,109,997				\$67,578,925		
53	9/5/2009		\$6,054,239				\$493,109				\$6,547,348		
Total thru Current Week		\$330,975,631	\$369,665,340	(\$38,689,709)	-10.5%	\$101,515,382	\$114,793,689	(\$13,278,307)	-11.6%	\$432,491,013	\$484,459,029	(\$51,968,016)	-10.7%
Fiscal Year Total		\$330,975,631	\$2,783,836,095			\$101,515,382	\$887,641,858			\$432,491,013	\$3,671,477,953		

\*\* FY 2009 includes 6 days; FY 2008 includes 8 days

### Texas Lottery Commission Fiscal Year Over Year Change in Sales



Note: Week 1 is not a full week of sales as this report is prepared on a Fiscal Year basis.

Texas Lottery Commission  
Instant Tickets by Price Point  
Sales, Prize Expense, Sales Contribution and Payout Percentage With Year Over Year Changes  
Unaudited

Fiscal Year	Price Point	# of Active Games	FY Sales	Year over Year Change in Sales	FY Prize Expense	Year over Year Change in Prize Expense	FY Sales Contribution	Year over Year Change in Contribution	Average Prize Payout %
2008	\$1.00	29	\$33,902,601		\$20,393,263		\$13,509,338		60.2%
thru	\$2.00	29	\$63,227,872		\$41,110,965		\$22,116,907		65.0%
10/20/2007	\$3.00	8	\$30,357,777		\$19,995,675		\$10,362,102		65.9%
	\$5.00	24	\$99,677,540		\$67,517,528		\$32,160,012		67.7%
	\$7.00	8	\$24,208,114		\$16,451,030		\$7,757,084		68.0%
	\$10.00	11	\$54,912,086		\$38,436,912		\$16,475,174		70.0%
	\$20.00	4	\$15,584,320		\$11,217,474		\$4,366,846		72.0%
	\$25.00	2	\$21,182,950		\$15,374,850		\$5,808,100		72.6%
	\$30.00	2	\$5,687,130		\$4,110,470		\$1,576,660		72.3%
	\$50.00	1	\$20,924,950		\$15,091,098		\$5,833,852		72.1%
<b>Total</b>		<b>118</b>	<b>\$369,665,340</b>		<b>\$249,699,263</b>		<b>\$119,966,077</b>		<b>67.5%</b>
2009	\$1.00	19	27,530,063		16,616,624		\$10,913,439		60.4%
thru	\$2.00	19	60,253,956		39,068,581		\$21,185,375		64.8%
10/18/2008	\$3.00	10	36,757,341		24,138,550		\$12,618,791		65.7%
	\$5.00	23	100,185,394		68,147,481		\$32,037,913		68.0%
	\$7.00	5	10,637,802		7,238,165		\$3,399,637		68.0%
	\$10.00	11	42,251,140		29,571,916		\$12,679,224		70.0%
	\$20.00	6	32,155,820		23,077,264		\$9,078,556		71.8%
	\$25.00	1	1,973,425		1,435,135		\$538,290		72.7%
	\$30.00	2	3,344,640		2,424,770		\$919,870		72.5%
	\$50.00	3	15,886,050		11,486,715		\$4,399,335		72.3%
<b>Total</b>		<b>99</b>	<b>\$330,975,631</b>		<b>\$223,205,201</b>		<b>\$107,770,430</b>		<b>67.4%</b>
Variance	\$1.00	-10	-\$6,372,538	-18.8%	-\$3,776,638	-18.5%	-\$2,595,900	-19.2%	0.21%
2009 to 2008	\$2.00	-10	-\$2,973,916	-4.7%	-\$2,042,384	-5.0%	-\$931,532	-4.2%	-0.18%
	\$3.00	2	\$6,399,564	21.1%	\$4,142,875	20.7%	\$2,256,689	21.8%	-0.20%
	\$5.00	-1	\$507,854	0.5%	\$629,954	0.9%	-\$122,100	-0.4%	0.29%
	\$7.00	-3	-\$13,570,312	-56.1%	-\$9,212,865	-56.0%	-\$4,357,447	-56.2%	0.09%
	\$10.00	0	-\$12,660,946	-23.1%	-\$8,864,996	-23.1%	-\$3,795,950	-23.0%	-0.01%
	\$20.00	2	\$16,571,500	106.3%	\$11,859,790	105.7%	\$4,711,710	107.9%	-0.21%
	\$25.00	-1	-\$19,209,525	-90.7%	-\$13,939,716	-90.7%	-\$5,269,809	-90.7%	0.14%
	\$30.00	0	-\$2,342,490	-41.2%	-\$1,685,699	-41.0%	-\$656,791	-41.7%	0.22%
	\$50.00	2	-\$5,038,900	n/a	-\$3,604,382	n/a	-\$1,434,518	n/a	0.19%
<b>Total</b>		<b>-19</b>	<b>-\$38,689,709</b>	<b>-10.5%</b>	<b>-\$26,494,062</b>	<b>-10.6%</b>	<b>-\$12,195,647</b>	<b>-10.2%</b>	<b>-0.11%</b>

Texas Lottery Commission  
Instant Tickets by Price Point  
Sales, Prize Expense, Sales Contribution and Payout Percentage With Year Over Year Changes  
Unaudited

Notes - Instant Ticket Variances

		FY 2009	FY 2008	Difference
Sales	\$1 - \$7	\$235,364,556	\$251,373,904	-\$16,009,348
Prize Exp.	\$1 - \$7	\$155,209,401	\$165,468,460	-\$10,259,059
Sales Cont.	\$1 - \$7	\$80,155,155	\$85,905,444	-\$5,750,289
Prize Exp. %	\$1 - \$7	65.9%	65.8%	0.1%
		FY 2009	FY 2008	Difference
Sales	\$10 - \$50	\$95,611,075	\$118,291,436	-\$22,680,361
Prize Exp.	\$10 - \$50	\$67,995,801	\$84,230,804	-\$16,235,003
Sales Cont.	\$10 - \$50	\$27,615,274	\$34,060,632	-\$6,445,358
Prize Exp. %	\$10 - \$50	71.1%	71.2%	-0.1%
		FY 2009	FY 2008	Difference
Sales	Instant	\$330,975,631	\$369,665,340	-\$38,689,709
Prize Exp.	Instant	\$223,205,201	\$249,699,263	-\$26,494,062
Sales Cont.	Instant	\$107,770,430	\$119,966,077	-\$12,195,647
Prize Exp. %	Instant	67.4%	67.5%	-0.1%

		FY 2009	FY 2008	Difference
Sales	\$1 - \$10	\$277,615,696	\$306,285,990	-\$28,670,294
Prize Exp.	\$1 - \$10	\$184,781,317	\$203,905,371	-\$19,124,055
Sales Cont.	\$1 - \$10	\$92,834,379	\$102,380,619	-\$9,546,239
Prize Exp. %	\$1 - \$10	66.6%	66.6%	0.0%
		FY 2009	FY 2008	Difference
Sales	\$20 - \$50	\$53,359,935	\$63,379,350	-\$10,019,415
Prize Exp.	\$20 - \$50	\$38,423,885	\$45,793,892	-\$7,370,007
Sales Cont.	\$20 - \$50	\$14,936,050	\$17,585,458	-\$2,649,408
Prize Exp. %	\$20 - \$50	72.0%	72.3%	-0.2%
		FY 2009	FY 2008	Difference
Sales	Instant	\$330,975,631	\$369,665,340	-\$38,689,709
Prize Exp.	Instant	\$223,205,201	\$249,699,263	-\$26,494,062
Sales Cont.	Instant	\$107,770,430	\$119,966,077	-\$12,195,647
Prize Exp. %	Instant	67.4%	67.5%	-0.1%

Texas Lottery Commission  
 Weekly Sales Summary  
 & Comparison to Previous Week  
 Unaudited

	Week Ending 10/18/08		Week Ending 10/11/08			
	<u>THIS WEEK</u>	% of Sales	<u>LAST WEEK</u>	% of Sales	<u>\$ change</u>	<u>% change</u>
Total Sales	<u>\$64,466,993</u>		<u>\$65,386,287</u>		<u>-\$919,294</u>	-1.41%
Instant Tickets	<u>\$49,299,053</u>	76.5%	<u>\$49,763,789</u>	76.1%	<u>-\$464,736</u>	-0.93%
Lotto Texas	\$3,780,438	5.9%	\$3,732,365	5.7%	\$48,073	1.29%
Pick 3	\$5,149,258	8.0%	\$5,287,094	8.1%	-\$137,836	-2.61%
Pick 3 Sum It Up	\$109,530	0.2%	\$114,666	0.2%	-\$5,136	-4.48%
Cash 5	\$1,355,601	2.1%	\$1,370,334	2.1%	-\$14,733	-1.08%
Texas Two Step	\$741,849	1.2%	\$1,305,250	2.0%	-\$563,401	-43.16%
Mega Millions	\$2,500,644	3.9%	\$2,306,070	3.5%	\$194,574	8.44%
Megaplier	\$652,198	1.0%	\$622,120	1.0%	\$30,078	4.83%
Daily 4	\$776,366	1.2%	\$778,204	1.2%	-\$1,838	-0.24%
Daily 4 Sum It Up	<u>\$102,056</u>	0.2%	<u>\$106,395</u>	0.2%	<u>-\$4,339</u>	-4.08%
Total Online Sales	<u>\$15,167,940</u>		<u>\$15,622,498</u>		<u>-\$454,558</u>	-2.91%

\* Totals may not sum due to rounding.



Texas Lottery Commission  
Weekly Sales Summary  
Unaudited

INSTANT TICKETS  
TOP TEN SELLING GAMES

For the Week Ending : 10/18/08

Rank	Price Point	Game	Sales (Millions)
1	\$ 20	TEXAS \$50 MILLION CLUB	\$ 2.597
2	\$ 3	BONUS CASHWORD	\$ 2.480
3	\$ 10	MATCH FOR CASH	\$ 2.392
4	\$ 5	THE TEXAS RANGERS LIMITED EDITION SILVER SERIES	\$ 2.304
5	\$ 5	JEWELS OF THE NILE	\$ 2.107
6	\$ 20	\$1 MILLION DOUBLE ACTION	\$ 2.000
7	\$ 10	SET FOR LIFE	\$ 1.982
8	\$ 5	2008 STATE FAIR OF TEXAS	\$ 1.835
9	\$ 50	\$130,000,000 PLATINUM PAYOUT	\$ 1.773
10	\$ 2	BREAK THE BANK	\$ 1.594

Texas Lottery Commission  
Prize Payout Tracking Report  
Unaudited

Through Week Ending 10/18/08

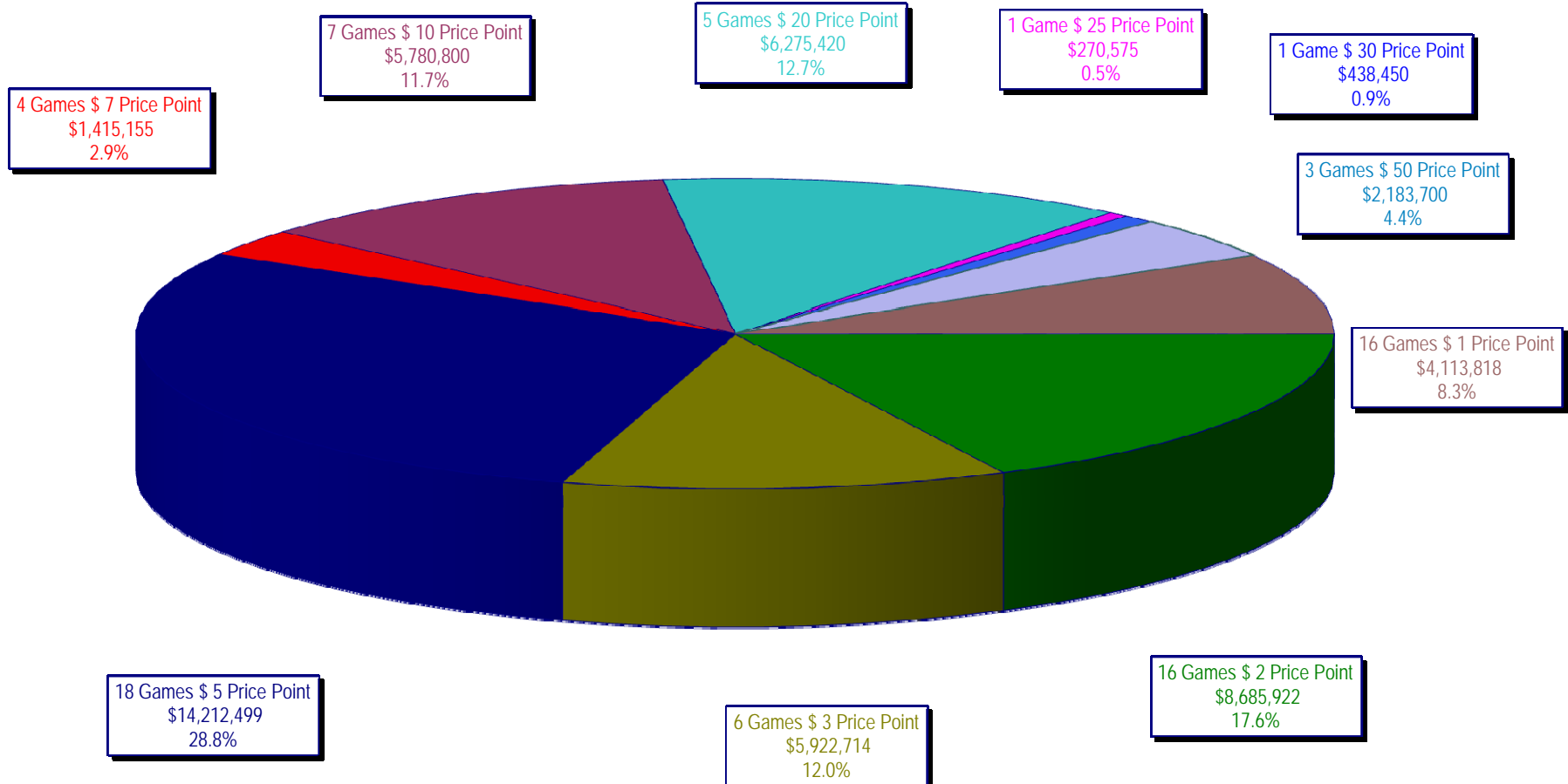
On-Line Sales

		FY Sales Through Week Ending 10/18/2008		FY Prize Expense Through Week Ending 10/18/2008	Actual* Prize Payout	Base Payout (Prize Pool)
Lotto	\$	23,959,242	\$	11,981,884	50.01%	50.00%
Pick 3		34,706,088		16,181,650	46.62%	50.00%
Pick 3 Sum It Up		759,204		343,008	45.18%	50.00%
Cash 5		9,158,603		4,655,285	50.83%	50.00%
Texas Two-Step		6,286,580		3,161,007	50.28%	50.00%
Mega Millions		16,451,244		7,841,284	47.66%	50.00%**
Megaplier		4,368,701		1,692,347	38.74%	N/A
Daily 4		5,124,391		2,055,025	40.10%	50.00%
Daily 4-Sum It Up		701,330		250,209	35.68%	50.00%
<b>Totals</b>	\$	<b>101,515,382</b>	\$	<b>48,161,699</b>	<b>47.44%</b>	

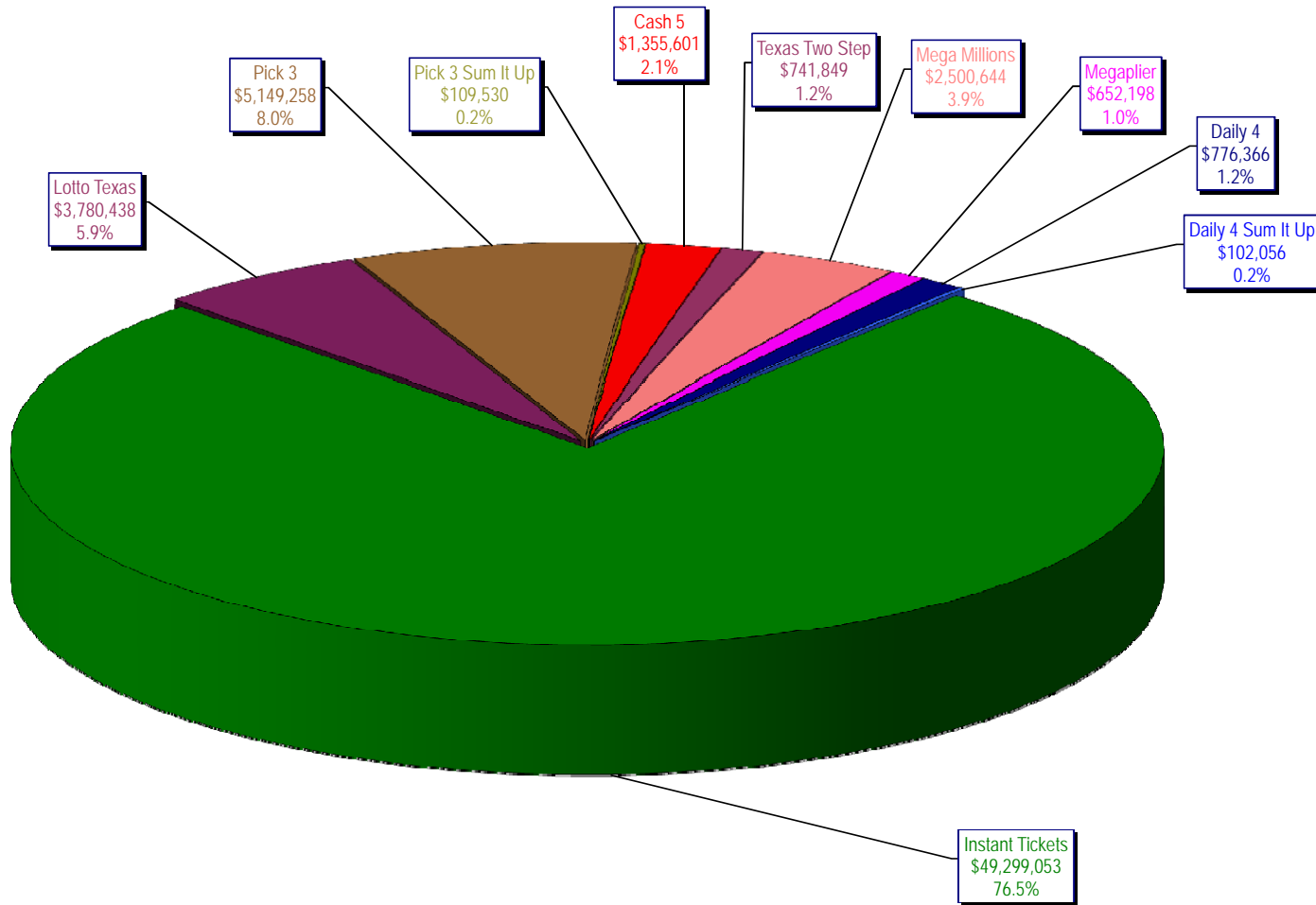
\* Before Unclaimed Prizes

\*\* Estimated; depends on # of guaranteed prizes won in Texas

Texas Lottery Commission  
Instant Ticket Sales  
For the Week Ending 10/18/2008  
(Unaudited)



Texas Lottery Commission  
**All Game Sales**  
For the Week Ending 10/18/2008  
(Unaudited)



\* Totals may not sum due to rounding.

