



WEEKLY SALES SUMMARY

Unaudited

[Week Ending: 10/20/2012](#)

Texas Lottery Commission
Fiscal Year to Date Sales Comparison
Unaudited

Through the week ending 10/20/2012 (8 weeks)

Sales by Game	FY 2011 *	FY 2012 **	FY 2013	\$ Change		% Change	
				FY 2013 to FY 2011	FY 2013 to FY 2012	FY 2013 to FY 2011	FY 2013 to FY 2012
Instants	\$ 378,349,868	\$ 384,885,771	\$ 405,366,143	\$ 27,016,275	\$ 20,480,372	7.1%	5.3%
Lotto Texas	25,233,510	24,315,887	22,570,292	-2,663,218	-1,745,595	-10.6%	-7.2%
Pick 3	39,440,825	37,153,293	34,830,177	-4,610,648	-2,323,116	-11.7%	-6.3%
Pick 3 Sum It Up	795,908	748,932	676,208	-119,701	-72,724	-15.0%	-9.7%
Cash Five	9,307,063	9,111,337	7,944,528	-1,362,535	-1,166,809	-14.6%	-12.8%
Texas Two Step	6,420,713	9,053,416	7,477,357	1,056,644	-1,576,059	16.5%	-17.4%
Mega Millions	18,628,769	20,439,203	15,927,526	-2,701,243	-4,511,677	-14.5%	-22.1%
Megaplier	4,225,506	4,618,818	3,619,054	-606,452	-999,764	-14.4%	-21.6%
Daily 4	8,078,932	8,596,561	9,356,595	1,277,663	760,034	15.8%	8.8%
Daily 4 Sum It Up	629,785	649,290	640,294	10,510	-8,996	1.7%	-1.4%
Powerball	12,345,780	16,623,924	22,117,877	9,772,097	5,493,953	79.2%	33.0%
Power Play	2,977,991	3,715,158	2,811,733	-166,258	-903,425	-5.6%	-24.3%
All or Nothing	-	-	13,853,889	13,853,889	13,853,889	-	-
Total	\$ 506,434,649	\$ 519,911,589	\$ 547,191,673	\$ 40,757,024	\$ 27,280,084	8.0%	5.2%

* 3 extra days

** 2 extra days

Texas Lottery Commission
 Fiscal Year to Date Cumulative Average Sales Comparison
 Unaudited

Through the week ending 10/20/2012 (8 weeks)

Sales by Game	FY 2011	FY 2012	FY 2013
Instants	\$ 7,138,677	\$ 7,401,649	\$ 8,107,323
Lotto Texas	476,104	467,613	451,406
Pick 3	744,167	714,486	696,604
Pick 3 Sum It Up	15,017	14,403	13,524
Cash Five	175,605	175,218	158,891
Texas Two Step	121,146	174,104	149,547
Mega Millions	351,486	393,062	318,551
Megaplier	79,727	88,823	72,381
Daily 4	152,433	165,318	187,132
Daily 4 Sum It Up	11,883	12,486	12,806
Powerball	232,939	319,691	442,358
Power Play	56,189	71,445	56,235
All or Nothing	-	-	329,855 *
Total	\$ <u>9,555,371</u>	\$ <u>9,998,300</u>	\$ <u>10,996,610</u>
	thru 10/23/2010 53 days	thru 10/22/2011 52 days	thru 10/20/2012 50 days * 42 days

Texas Lottery Commission
Fiscal Year Over Year Change in Sales
Unaudited
FY 2013 Compared to FY 2012

Week	FY 2013 Week Ending	INSTANT TICKETS				DRAW GAMES				TOTAL SALES			
		FY 2013	FY 2012	Difference	% change - Cumulative Sales	FY 2013	FY 2012	Difference	% change - Cumulative Sales	FY 2013	FY 2012	Difference	% change - Cumulative Sales
1	9/1/2012**	\$9,611,328	\$25,147,181	(\$15,535,853)	-61.8%	\$3,712,535	\$9,704,561	(\$5,992,026)	-61.7%	\$13,323,863	\$34,851,742	(\$21,527,879)	-61.8%
2	9/8/2012	\$56,941,761	\$50,591,068	\$6,350,693	12.6%	\$19,305,417	\$17,681,853	\$1,623,564	9.2%	\$76,247,178	\$68,272,921	\$7,974,257	11.7%
3	9/15/2012	\$56,302,875	\$49,835,063	\$6,467,812	13.0%	\$20,857,230	\$16,842,326	\$4,014,904	23.8%	\$77,160,105	\$66,677,389	\$10,482,716	15.7%
4	9/22/2012	\$54,974,438	\$49,777,138	\$5,197,300	10.4%	\$20,570,277	\$17,504,800	\$3,065,477	17.5%	\$75,544,715	\$67,281,938	\$8,262,777	12.3%
5	9/29/2012	\$54,606,674	\$51,040,274	\$3,566,400	7.0%	\$20,462,690	\$18,653,100	\$1,809,591	9.7%	\$75,069,364	\$69,693,374	\$5,375,991	7.7%
6	10/6/2012	\$59,223,327	\$53,715,157	\$5,508,170	10.3%	\$19,279,973	\$17,225,680	\$2,054,293	11.9%	\$78,503,300	\$70,940,837	\$7,562,463	10.7%
7	10/13/2012	\$57,075,606	\$51,942,121	\$5,133,485	9.9%	\$18,638,467	\$17,854,980	\$783,487	4.4%	\$75,714,073	\$69,797,101	\$5,916,972	8.5%
8	10/20/2012	\$56,630,134	\$52,837,769	\$3,792,365	7.2%	\$18,998,943	\$19,558,519	(\$559,577)	-2.9%	\$75,629,077	\$72,396,288	\$3,232,789	4.5%
9	10/27/2012		\$52,206,644				\$21,504,565				\$73,711,209		
10	11/3/2012		\$56,265,310				\$20,870,086				\$77,135,396		
11	11/10/2012		\$55,682,645				\$17,862,404				\$73,545,049		
12	11/17/2012		\$54,978,079				\$17,879,985				\$72,858,064		
13	11/24/2012		\$53,942,448				\$16,877,145				\$70,819,593		
14	12/1/2012		\$57,153,469				\$18,298,636				\$75,452,105		
15	12/8/2012		\$55,318,284				\$19,033,326				\$74,351,610		
16	12/15/2012		\$58,612,629				\$20,045,279				\$78,657,908		
17	12/22/2012		\$60,628,256				\$22,572,986				\$83,201,242		
18	12/29/2012		\$63,065,007				\$19,948,521				\$83,013,528		
19	1/5/2013		\$60,479,896				\$17,331,888				\$77,811,784		
20	1/12/2013		\$57,689,526				\$17,568,732				\$75,258,258		
21	1/19/2013		\$58,704,854				\$19,886,540				\$78,591,394		
22	1/26/2013		\$57,611,325				\$20,641,697				\$78,253,022		
23	2/2/2013		\$65,553,366				\$23,689,855				\$89,243,221		
24	2/9/2013		\$75,070,485				\$28,361,583				\$103,432,068		
25	2/16/2013		\$66,679,947				\$19,588,615				\$86,268,562		
26	2/23/2013		\$64,868,899				\$19,965,388				\$84,834,287		
27	3/2/2013		\$67,135,065				\$20,947,181				\$88,082,246		
28	3/9/2013		\$68,299,006				\$22,152,639				\$90,451,645		
29	3/16/2013		\$65,013,692				\$23,351,718				\$88,365,410		
30	3/23/2013		\$64,035,255				\$27,416,609				\$91,451,864		
31	3/30/2013		\$65,135,991				\$84,628,987				\$149,764,978		
32	4/6/2013		\$66,860,957				\$19,899,400				\$86,760,357		
33	4/13/2013		\$64,028,898				\$20,220,141				\$84,249,039		
34	4/20/2013		\$63,623,892				\$20,974,282				\$84,598,174		
35	4/27/2013		\$61,743,623				\$20,267,388				\$82,011,011		
36	5/4/2013		\$64,851,962				\$20,642,982				\$85,494,944		
37	5/11/2013		\$65,472,556				\$19,140,768				\$84,613,324		
38	5/18/2013		\$60,572,658				\$18,342,814				\$78,915,472		
39	5/25/2013		\$58,959,028				\$18,618,060				\$77,577,088		
40	6/1/2013		\$57,409,086				\$19,014,645				\$76,423,731		
41	6/8/2013		\$59,845,545				\$20,527,958				\$80,373,503		
42	6/15/2013		\$57,021,498				\$19,386,186				\$76,407,684		

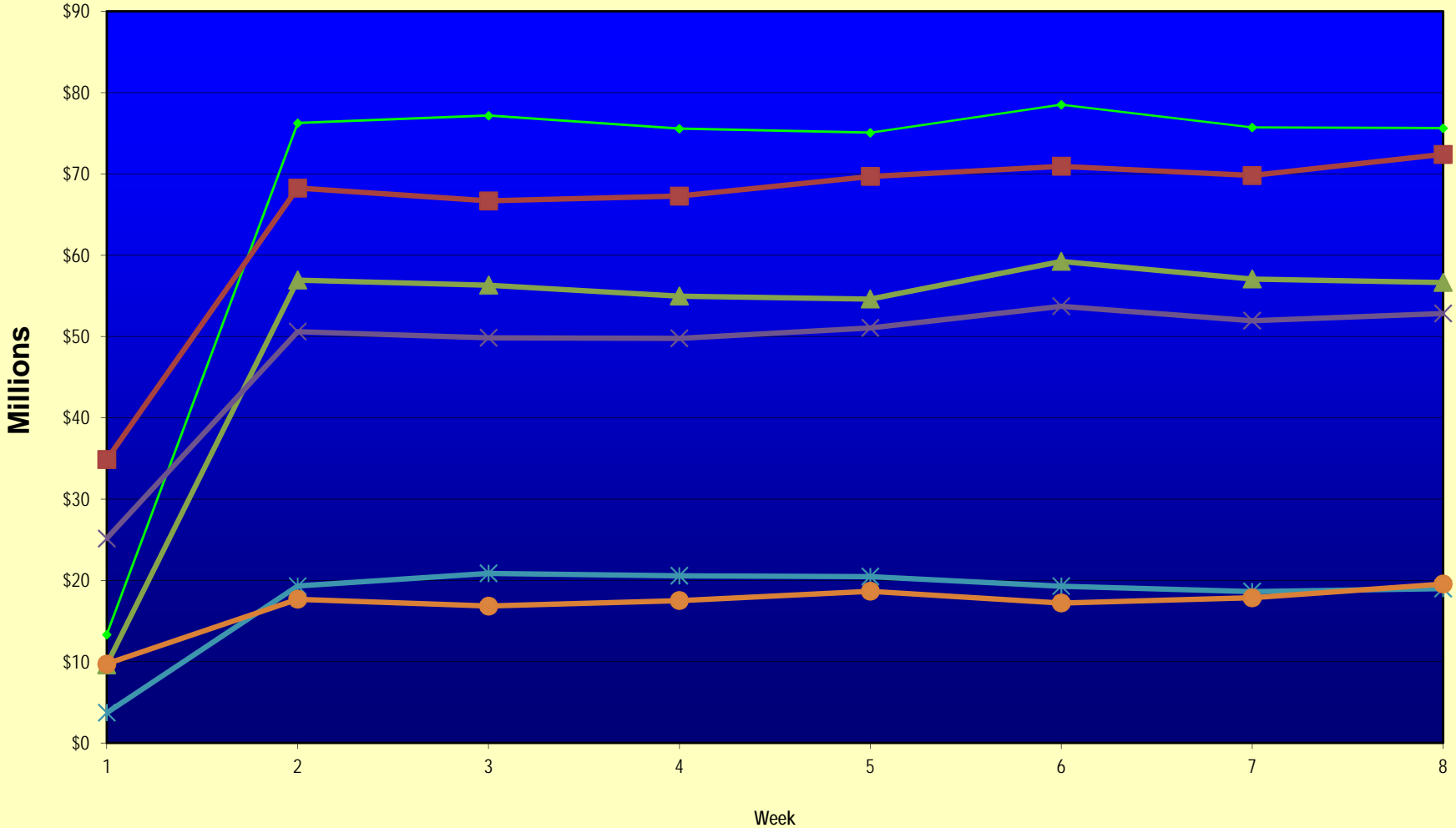
Note: Week 1 is not a full week of sales as this report is prepared on a Fiscal Year basis.

Texas Lottery Commission
Fiscal Year Over Year Change in Sales
Unaudited
FY 2013 Compared to FY 2012

Week	FY 2013 Week Ending	INSTANT TICKETS				DRAW GAMES				TOTAL SALES			
		FY 2013	FY 2012	Difference	% change - Cumulative Sales	FY 2013	FY 2012	Difference	% change - Cumulative Sales	FY 2013	FY 2012	Difference	% change - Cumulative Sales
43	6/22/2013		\$57,892,076				\$17,594,154				\$75,486,230		
44	6/29/2013		\$57,497,435				\$18,153,658				\$75,651,093		
45	7/6/2013		\$60,345,000				\$19,059,152				\$79,404,152		
46	7/13/2013		\$57,683,321				\$18,751,043				\$76,434,364		
47	7/20/2013		\$57,083,343				\$18,769,201				\$75,852,544		
48	7/27/2013		\$54,006,781				\$18,934,103				\$72,940,884		
49	8/3/2013		\$56,557,409				\$20,206,705				\$76,764,114		
50	8/10/2013		\$57,799,452				\$22,832,120				\$80,631,572		
51	8/17/2013		\$54,845,724				\$25,435,624				\$80,281,348		
52	8/24/2013		\$55,661,277				\$17,524,474				\$73,185,751		
	8/31/2013		\$47,363,984				\$14,929,528				\$62,293,512		
Total thru Current Week		\$405,366,143	\$384,885,771	\$20,480,372	5.3%	\$141,825,530	\$135,025,818	\$6,799,712	5.0%	\$547,191,673	\$519,911,589	\$27,280,084	5.2%
Fiscal Year Total		\$405,366,143	\$3,086,141,354			\$141,825,530	\$1,104,674,559			\$547,191,673	\$4,190,815,913		

** FY 2012 includes 3 days; FY 2013 includes 1 day.

Texas Lottery Commission Fiscal Year Over Year Change in Sales



◆ Total Sales 2013
 ■ Total Sales 2012
 ▲ Instant Tickets 2013
 × Instant Tickets 2012
 ✱ Draw Games 2013
 ● Draw Games 2012

Note: Week 1 is not a full week of sales as this report is prepared on a Fiscal Year basis.

Texas Lottery Commission
Instant Tickets by Price Point
Sales, Prize Expense, Sales Contribution and Payout Percentage With Year Over Year Changes
Unaudited

Fiscal Year	Price Point	# of Active Games	FY Sales	% of Instant Ticket Sales	Year over Year Change in Sales	FY Prize Expense	Year over Year Change in Prize Expense	FY Sales Contribution	Year over Year Change in Contribution	Average Prize Payout %	Year over Year Change in Payout %
2012	\$1.00	24	34,719,522	9.0%		21,627,892		13,091,630		62.3%	2.5%
thru	\$2.00	23	52,731,214	13.7%		34,304,440		18,426,774		65.1%	-0.8%
10/22/2011	\$3.00	13	48,936,789	12.7%		32,116,511		16,820,278		65.6%	0.1%
	\$5.00	28	118,248,880	30.7%		80,413,347		37,835,533		68.0%	0.1%
	\$7.00	4	11,749,556	3.1%		7,989,603		3,759,953		68.0%	0.0%
	\$10.00	11	54,533,210	14.2%		38,535,020		15,998,190		70.7%	-0.5%
	\$20.00	5	53,016,200	13.8%		39,526,571		13,489,629		74.6%	-0.1%
	\$50.00	1	10,950,400	2.8%		8,505,098		2,445,302		77.7%	0.1%
Total		109	\$384,885,771			\$263,018,482		\$121,867,289		68.3%	-0.2%
2013	\$1.00	23	23,683,607	5.8%		14,247,646		9,435,961		60.2%	-0.8%
thru	\$2.00	24	50,607,526	12.5%		32,907,649		17,699,877		65.0%	-0.1%
10/20/2012	\$3.00	13	53,963,970	13.3%		35,397,488		18,566,482		65.6%	0.1%
	\$5.00	38	125,573,955	31.0%		85,232,588		40,341,367		67.9%	-0.2%
	\$7.00	2	8,103,795	2.0%		5,507,876		2,595,919		68.0%	0.0%
	\$10.00	10	64,159,440	15.8%		45,417,134		18,742,306		70.8%	-0.1%
	\$20.00	7	63,395,000	15.6%		47,443,872		15,951,128		74.8%	0.1%
	\$50.00	2	15,878,850	3.9%		12,329,148		3,549,702		77.6%	0.0%
Total		119	\$405,366,143			\$278,483,400		\$126,882,743		68.7%	0.1%
Variance	\$1.00	-1	-11,035,915		-31.8%	-7,380,246	-34.1%	-3,655,669	-27.9%	-2.13%	
2013 to	\$2.00	1	-2,123,688		-4.0%	-1,396,791	-4.1%	-726,897	-3.9%	-0.03%	
2012	\$3.00	0	5,027,181		10.3%	3,280,977	10.2%	1,746,205	10.4%	-0.03%	
	\$5.00	10	7,325,075		6.2%	4,819,241	6.0%	2,505,834	6.6%	-0.13%	
	\$7.00	-2	-3,645,761		-31.0%	-2,481,727	-31.1%	-1,164,034	-31.0%	-0.03%	
	\$10.00	-1	9,626,230		17.7%	6,882,113	17.9%	2,744,117	17.2%	0.12%	
	\$20.00	2	10,378,800		19.6%	7,917,301	20.0%	2,461,499	18.2%	0.28%	
	\$50.00	1	4,928,450		45.0%	3,824,049	45.0%	1,104,401	45.2%	-0.02%	
Total		10	\$20,480,372		5.3%	\$15,464,918	5.9%	\$5,015,454	4.1%	0.36%	

Notes - Instant Ticket Variances

Texas Lottery Commission
Instant Tickets by Price Point
Sales, Prize Expense, Sales Contribution and Payout Percentage With Year Over Year Changes
 Unaudited

			FY 2013		FY 2012	Difference
Sales	\$1 - \$7		\$261,932,853		\$266,385,961	-\$4,453,108
Prize Exp.	\$1 - \$7		\$173,293,247		\$176,451,793	-\$3,158,546
Sales Cont.	\$1 - \$7		\$88,639,606		\$89,934,168	-\$1,294,562
Prize Exp. %	\$1 - \$7		66.2%		66.2%	-0.1%
			FY 2013		FY 2012	Difference
Sales	\$10 - \$50		\$143,433,290		\$118,499,810	\$24,933,480
Prize Exp.	\$10 - \$50		\$105,190,153		\$86,566,689	\$18,623,464
Sales Cont.	\$10 - \$50		\$38,243,137		\$31,933,121	\$6,310,016
Prize Exp. %	\$10 - \$50		73.3%		73.1%	0.3%
			FY 2013		FY 2012	Difference
Sales	Instant		\$405,366,143		\$384,885,771	\$20,480,372
Prize Exp.	Instant		\$278,483,400		\$263,018,482	\$15,464,918
Sales Cont.	Instant		\$126,882,743		\$121,867,289	\$5,015,454
Prize Exp. %	Instant		68.7%		68.3%	0.4%

			FY 2013		FY 2012	Difference
Sales	\$1 - \$10		\$326,092,293		\$320,919,171	\$5,173,122
Prize Exp.	\$1 - \$10		\$218,710,381		\$214,986,813	\$3,723,568
Sales Cont.	\$1 - \$10		\$107,381,912		\$105,932,358	\$1,449,554
Prize Exp. %	\$1 - \$10		67.1%		67.0%	0.1%
			FY 2013		FY 2012	Difference
Sales	\$20 - \$50		\$79,273,850		\$63,966,600	\$15,307,250
Prize Exp.	\$20 - \$50		\$59,773,019		\$48,031,669	\$11,741,350
Sales Cont.	\$20 - \$50		\$19,500,831		\$15,934,931	\$3,565,900
Prize Exp. %	\$20 - \$50		75.4%		75.1%	0.3%
			FY 2013		FY 2012	Difference
Sales	Instant		\$405,366,143		\$384,885,771	\$20,480,372
Prize Exp.	Instant		\$278,483,400		\$263,018,482	\$15,464,918
Sales Cont.	Instant		\$126,882,743		\$121,867,289	\$5,015,454
Prize Exp. %	Instant		68.7%		68.3%	0.4%

Texas Lottery Commission
Weekly Sales Summary
& Comparison to Previous Week
 Unaudited

	Week Ending 10/20/2012	% of Sales	Week Ending 10/13/2012	% of Sales	\$ change	% change
	<u>THIS WEEK</u>		<u>LAST WEEK</u>			
Total Sales	<u>\$75,629,077</u>		<u>\$75,714,073</u>		<u>-\$84,996</u>	-0.11%
Instant Tickets	<u>\$56,630,134</u>	74.9%	<u>\$57,075,606</u>	75.4%	<u>-\$445,472</u>	-0.78%
Lotto	\$3,172,820	4.2%	\$3,133,742	4.1%	\$39,078	1.25%
Pick 3	\$4,959,071	6.6%	\$4,793,793	6.3%	\$165,278	3.45%
Pick 3 Sum It Up	\$88,413	0.1%	\$89,663	0.1%	-\$1,250	-1.39%
Cash Five	\$1,074,980	1.4%	\$1,074,687	1.4%	\$293	0.03%
Texas Two Step	\$970,100	1.3%	\$865,146	1.1%	\$104,954	12.13%
Mega Millions	\$1,984,966	2.6%	\$2,163,099	2.9%	-\$178,133	-8.24%
Megaplier	\$466,730	0.6%	\$492,614	0.7%	-\$25,884	-5.25%
Daily 4	\$1,296,602	1.7%	\$1,261,858	1.7%	\$34,744	2.75%
Daily 4 Sum It Up	\$84,868	0.1%	\$84,585	0.1%	\$283	0.33%
Powerball	\$2,447,518	3.2%	\$2,241,120	3.0%	\$206,398	9.21%
Power Play	\$328,436	0.4%	\$309,684	0.4%	\$18,752	6.06%
All or Nothing	\$2,124,439	2.8%	\$2,128,476	2.8%	-\$4,037	-0.19%
Total Draw Game Sales	<u>\$18,998,943</u>		<u>\$18,638,467</u>		<u>\$360,476</u>	1.93%

* Totals may not sum due to rounding.

Texas Lottery Commission
Weekly Sales Summary
Unaudited

INSTANT TICKETS
TOP TEN SELLING GAMES

For the Week Ending: 10/20/12

Rank	Price Point	Game	Sales (Millions)
1	\$ 20	\$500 MILLION EXTREME CASH BLAST	\$ 3.558
2	\$ 20	MERRY MILLIONS	\$ 3.423
3	\$ 5	RUBY 7'S	\$ 2.660
4	\$ 10	\$200 MILLION CASH SPECTACULAR	\$ 2.306
5	\$ 10	DOUBLE ACTION	\$ 2.210
6	\$ 5	10X THE MONEY	\$ 2.152
7	\$ 3	BONUS CASHWORD	\$ 2.016
8	\$ 3	LOTERIA	\$ 1.868
9	\$ 5	NUTCRACKER CASH	\$ 1.812
10	\$ 5	DIAMOND MINE	\$ 1.713

Texas Lottery Commission
Prize Payout Tracking Report
Unaudited

Through Week Ending 10/20/12

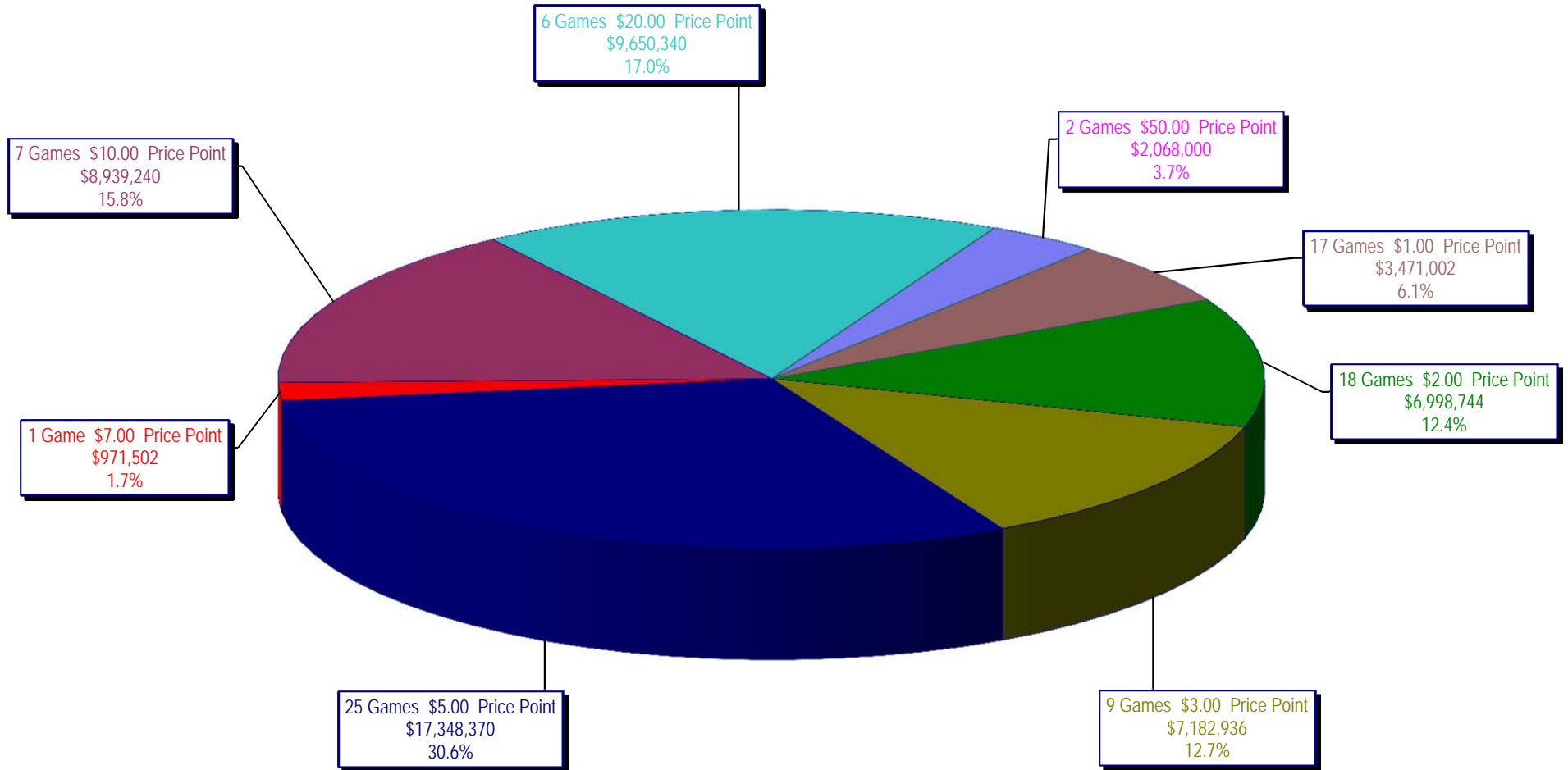
Draw Game Sales

		FY Sales Through Week Ending 10/20/2012		FY Prize Expense Through Week Ending 10/20/2012	Actual* Prize Payout	Base Payout (Prize Pool)
Lotto	\$	22,570,292	\$	11,287,115	50.01%	50.00%
Pick 3		34,830,177		21,482,030	61.68%	50.00%
Pick 3 Sum It Up		676,208		355,227	52.53%	50.00%
Cash Five		7,944,528		3,973,441	50.01%	50.00%
Texas Two Step		7,477,357		3,729,368	49.88%	50.00%
Mega Millions		15,927,526		7,609,356	47.77%	50.00%**
Megaplier		3,619,054		1,601,172	44.24%	N/A
Daily 4		9,356,595		3,938,725	42.10%	50.00%
Daily 4 Sum It Up		640,294		248,766	38.85%	50.00%
Powerball		22,117,877		11,799,249	53.35%	50.00%**
Power Play		2,811,733		1,405,204	49.98%	N/A
All or Nothing		13,853,889		8,071,570	58.26%	50.00%
Totals	\$	141,825,530	\$	75,501,223	53.24%	

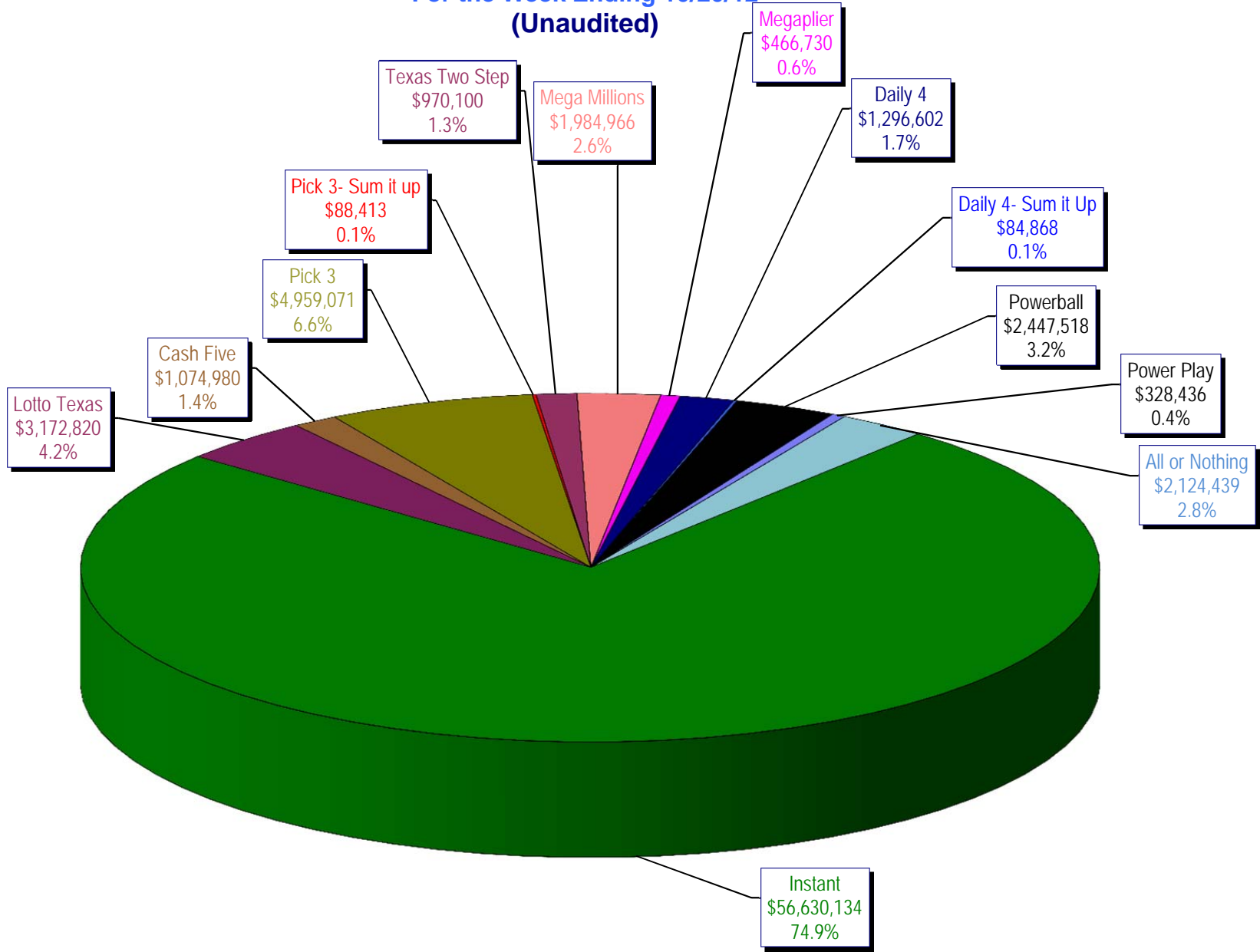
* Before Unclaimed Prizes

** Estimated; depends on # of guaranteed prizes won in Texas

Texas Lottery Commission
Instant Ticket Sales
For the Week Ending 10/20/12
(Unaudited)



Texas Lottery Commission
All Game Sales
For the Week Ending 10/20/12
(Unaudited)



Texas Lottery Commission - Weekly Sales Summary for FY 2013 (Unaudited)

Week Ended	Instant Games	New Games & Dates	Lotto Texas	Jackpot W S	Pick 3	Pick 3 Sum It Up	Cash Five	Texas Two Step	Jackpot M TH	Mega Millions	Jackpot T F	Megaplier	Daily 4	Daily 4 Sum It Up	Powerball	Jackpot W S	Power Play	All or Nothing	Total	Per Cap.
9/1/2012	56,975,312	1446 (\$1, N); 1444 (\$2, N) - 08/27/12	2,972,415	12 13	4,967,337	105,441	1,198,597	1,455,689	500 675	2,769,421	73 83	612,072	1,419,103	97,265	2,680,694	70 80	364,030		75,617,375	2.95
9/8/2012	56,941,761	1440 (\$2, N); 1458 (\$3, N); 1459 (\$5, N) - 09/03/12	3,005,564	14 15	5,112,132	106,959	1,185,494	1,179,003	875 200	3,140,536	93 105	665,392	1,412,279	99,861	3,002,910	90 100	395,287		76,247,178	2.97
9/15/2012	56,302,875	1452 (\$3, N) - 09/10/12	2,999,894	16 17	4,785,209	95,720	1,118,519	894,412	225 200	2,684,227	120 12	580,869	1,290,478	90,795	3,373,296	110 125	417,470	2,526,342	77,160,105	3.01
9/22/2012	54,974,438	1460 (\$1, N); 1461 (\$5, N) - 09/17/12	2,986,898	18 19	4,611,684	89,173	1,091,440	986,264	225 325	1,874,336	15 12	452,082	1,258,191	86,390	4,122,790	149 174	479,344	2,531,686	75,544,715	2.94
9/29/2012	54,606,674	1462 (\$2, N); 1472 (\$10, N) - 09/24/12	3,047,519	20 21	4,708,250	90,752	1,077,739	1,313,257	475 625	1,884,366	14 21	452,334	1,278,847	87,211	3,779,359	200 40	445,091	2,297,966	75,069,364	2.92
10/6/2012	59,223,327	1464 (\$5, N) - 10/01/12	3,164,231	22 23	4,947,571	96,251	1,121,146	1,188,386	800 200	2,055,918	28 36	482,303	1,310,612	89,270	2,266,428	50 40	312,877	2,244,980	78,503,300	3.06
10/13/2012	57,075,606	1465 (\$1, N); 1466 (\$20, N) - 10/08/2012	3,133,742	24 25	4,793,793	89,663	1,074,687	865,146	225 200	2,163,099	45 53	492,614	1,261,858	84,585	2,241,120	50 60	309,684	2,128,476	75,714,073	2.95
10/20/2012	56,630,134	1467 (\$1, N); 1468 (\$5, N) - 10/15/12	3,172,820	26 27	4,959,071	88,413	1,074,980	970,100	225 325	1,984,966	61 12	466,730	1,296,602	84,868	2,447,518	70 80	328,436	2,124,439	75,629,077	2.95
weekly change	-0.8%		1.2%		3.4%	-1.4%	0.0%	12.1%		-8.2%		-5.3%	2.8%	0.3%	9.2%		6.1%	-0.2%		-0.1%
	SALES		SALES		SALES	SALES	SALES	SALES		SALES		SALES	SALES	SALES	SALES		SALES		SALES	% of Sales
Calendar Year to date	2,538,768,955		133,316,129		220,312,785	4,565,142	52,012,647	51,957,179		174,051,968		33,128,402	56,997,279	3,995,121	152,580,969		19,809,832	13,853,889	3,455,350,295	100.0%
Fiscal Year to date 2013	405,366,143		22,570,292		34,830,177	676,208	7,944,528	7,477,357		15,927,526		3,619,054	9,356,595	640,294	22,117,877		2,811,733	13,853,889	547,191,673	100.0%