



*WEEKLY SALES SUMMARY*

Unaudited

**Week Ending: 10/25/08**

Texas Lottery Commission  
Fiscal Year to Date Sales Comparison  
Unaudited

Through the week ending 10/25/2008 (8 weeks)

Sales by Game	FY 2007 *	FY 2008 **	FY 2009	\$ Change		% Change	
				FY 2009 to FY 2007	FY 2009 to FY 2008	FY 2009 to FY 2007	FY 2009 to FY 2008
Instants	\$ 417,257,967	\$ 420,012,790	\$ 380,953,212	\$ -36,304,755	\$ -39,059,578	-8.7%	-9.3%
Lotto Texas	31,973,932	33,736,773	27,170,004	-4,803,928	-6,566,769	-15.0%	-19.5%
Pick 3	47,256,491	44,708,800	39,805,759	-7,450,732	-4,903,041	-15.8%	-11.0%
Pick 3 Sum It Up	-	-	866,308	866,308	866,308	-	-
Cash 5	13,698,983	12,423,334	10,497,682	-3,201,301	-1,925,652	-23.4%	-15.5%
Texas Two Step	10,495,601	7,077,451	7,076,229	-3,419,372	-1,222	-32.6%	0.0%
Mega Millions	24,025,726	20,370,861	18,908,209	-5,117,517	-1,462,652	-21.3%	-7.2%
Megaplier	5,785,825	5,336,505	5,009,907	-775,918	-326,598	-13.4%	-6.1%
Daily 4	-	5,158,354	5,902,825	5,902,825	744,471	-	-
Daily 4 Sum It Up	-	1,568,127	804,303	804,303	-763,825	-	-
<b>Total</b>	<b>\$ 550,494,525</b>	<b>\$ 550,392,994</b>	<b>\$ 496,994,437</b>	<b>\$ -53,500,088</b>	<b>\$ -53,398,557</b>	<b>-9.7%</b>	<b>-9.7%</b>

\* 3 extra days in 2007 \*\* 2 extra days in 2008

Texas Lottery Commission  
Fiscal Year Over Year Change in Sales  
Unaudited  
FY 2009 Compared to FY 2008

Week	FY 2009 Week Ending	INSTANT TICKETS				ON-LINE GAMES				TOTAL SALES			
		FY 2009	FY 2008	Difference	% change - Cumulative Sales	FY 2009	FY 2008	Difference	% change - Cumulative Sales	FY 2009	FY 2008	Difference	% change - Cumulative Sales
1	9/6/2008**	\$44,890,104	\$62,376,229	(\$17,486,125)	-28.0%	\$14,722,011	\$19,372,224	(\$4,650,213)	-24.0%	\$59,612,115	\$81,748,453	(\$22,136,338)	-27.1%
2	9/13/2008	\$46,309,551	\$52,458,866	(\$6,149,315)	-20.6%	\$13,704,860	\$16,926,163	(\$3,221,303)	-21.7%	\$60,014,411	\$69,385,029	(\$9,370,618)	-20.8%
3	9/20/2008	\$42,923,171	\$49,998,934	(\$7,075,763)	-18.6%	\$12,291,263	\$15,792,283	(\$3,501,020)	-21.8%	\$55,214,434	\$65,791,217	(\$10,576,783)	-19.4%
4	9/27/2008	\$47,042,801	\$49,894,175	(\$2,851,374)	-15.6%	\$14,222,339	\$14,800,514	(\$578,175)	-17.9%	\$61,265,140	\$64,694,689	(\$3,429,549)	-16.2%
5	10/4/2008	\$50,747,162	\$53,486,863	(\$2,739,701)	-13.5%	\$15,784,472	\$16,618,430	(\$833,958)	-15.3%	\$66,531,634	\$70,105,293	(\$3,573,659)	-14.0%
6	10/11/2008	\$49,763,789	\$50,918,020	(\$1,154,231)	-11.7%	\$15,622,498	\$15,601,410	\$21,088	-12.9%	\$65,386,287	\$66,519,430	(\$1,133,143)	-12.0%
7	10/18/2008	\$49,299,053	\$50,532,253	(\$1,233,200)	-10.5%	\$15,167,940	\$15,682,666	(\$514,726)	-11.6%	\$64,466,993	\$66,214,919	(\$1,747,926)	-10.7%
8	10/25/2008	\$49,977,581	\$50,347,450	(\$369,869)	-9.3%	\$14,525,843	\$15,586,516	(\$1,060,673)	-11.0%	\$64,503,424	\$65,933,966	(\$1,430,542)	-9.7%
9	11/1/2008		\$53,953,733				\$16,775,983				\$70,729,716		
10	11/8/2008		\$53,635,090				\$15,912,791				\$69,547,881		
11	11/15/2008		\$51,254,401				\$15,797,076				\$67,051,477		
12	11/22/2008		\$50,897,817				\$15,801,720				\$66,699,537		
13	11/29/2008		\$53,913,115				\$17,055,505				\$70,968,620		
14	12/6/2008		\$55,702,697				\$17,900,717				\$73,603,414		
15	12/13/2008		\$53,703,516				\$17,820,841				\$71,524,357		
16	12/20/2008		\$57,592,769				\$17,436,233				\$75,029,002		
17	12/27/2008		\$57,696,003				\$14,743,680				\$72,439,683		
18	1/3/2009		\$57,935,952				\$15,704,450				\$73,640,402		
19	1/10/2009		\$55,360,542				\$15,691,540				\$71,052,082		
20	1/17/2009		\$54,920,166				\$16,259,669				\$71,179,835		
21	1/24/2009		\$54,439,890				\$16,691,724				\$71,131,614		
22	1/31/2009		\$57,464,382				\$17,968,227				\$75,432,609		
23	2/7/2009		\$60,715,019				\$20,097,338				\$80,812,357		
24	2/14/2009		\$57,093,143				\$22,179,908				\$79,273,051		
25	2/21/2009		\$57,627,047				\$27,230,539				\$84,857,586		
26	2/28/2009		\$55,591,667				\$17,016,118				\$72,607,785		
27	3/7/2009		\$56,837,481				\$16,690,193				\$73,527,674		
28	3/14/2009		\$54,587,112				\$16,448,165				\$71,035,277		
29	3/21/2009		\$53,098,937				\$16,639,184				\$69,738,121		
30	3/28/2009		\$53,933,689				\$17,698,625				\$71,632,314		
31	4/4/2009		\$57,598,982				\$17,665,411				\$75,264,393		
32	4/11/2009		\$53,954,185				\$15,860,784				\$69,814,969		
33	4/18/2009		\$53,946,736				\$16,452,676				\$70,399,412		
34	4/25/2009		\$51,533,006				\$16,873,949				\$68,406,955		
35	5/2/2009		\$53,250,568				\$18,202,103				\$71,452,671		
36	5/9/2009		\$54,060,849				\$18,422,562				\$72,483,411		
37	5/16/2009		\$54,010,641				\$20,728,360				\$74,739,001		
38	5/23/2009		\$50,377,032				\$15,461,384				\$65,838,416		
39	5/30/2009		\$49,545,080				\$15,175,370				\$64,720,450		
40	6/6/2009		\$53,702,986				\$15,982,166				\$69,685,152		

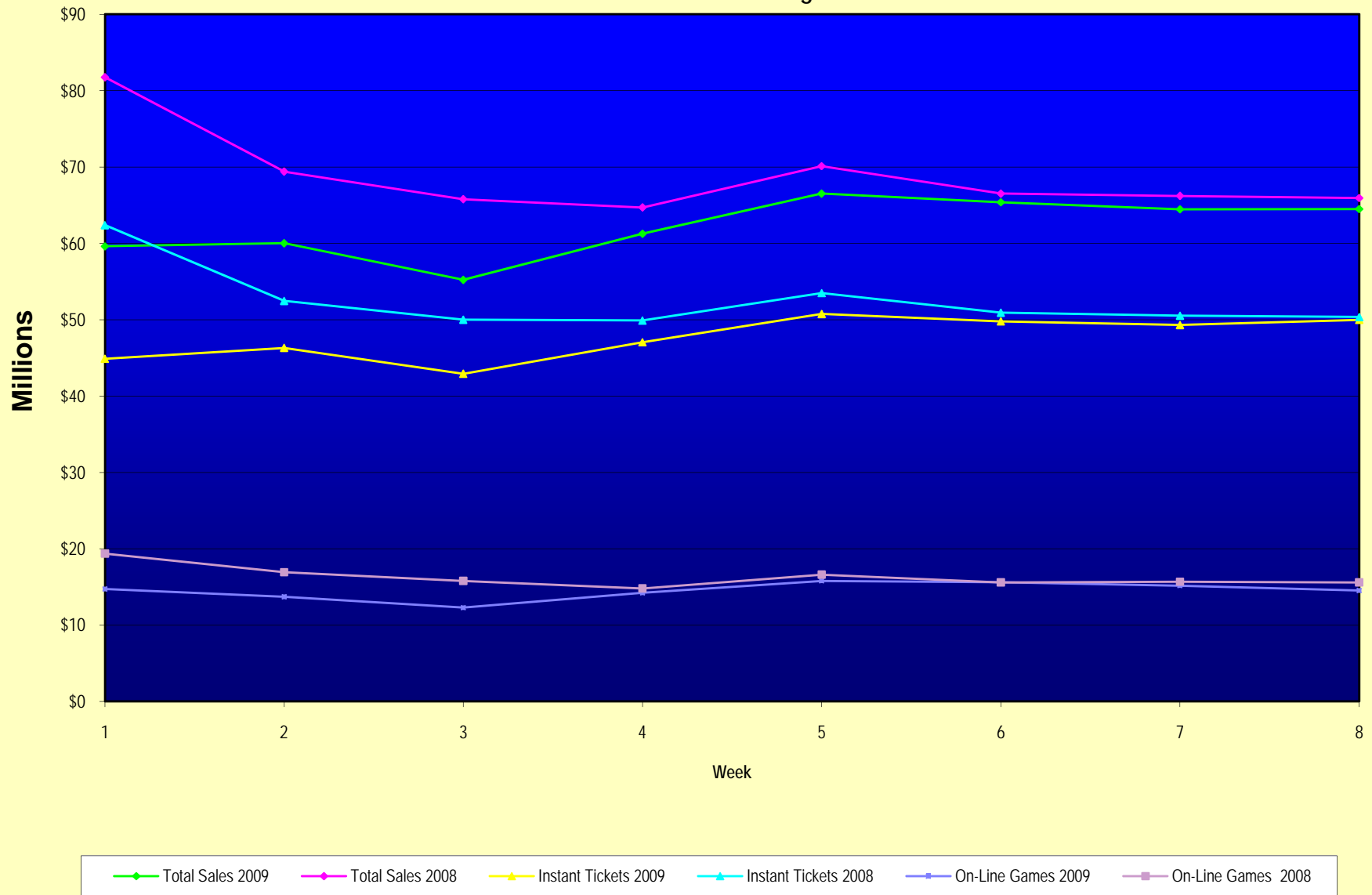
Note: Week 1 is not a full week of sales as this report is prepared on a Fiscal Year basis.

Texas Lottery Commission  
Fiscal Year Over Year Change in Sales  
Unaudited  
FY 2009 Compared to FY 2008

Week	FY 2009 Week Ending	INSTANT TICKETS				ON-LINE GAMES				TOTAL SALES			
		FY 2009	FY 2008	Difference	% change - Cumulative Sales	FY 2009	FY 2008	Difference	% change - Cumulative Sales	FY 2009	FY 2008	Difference	% change - Cumulative Sales
41	6/13/2009		\$51,171,483				\$16,589,087				\$67,760,570		
42	6/20/2009		\$50,650,362				\$15,728,484				\$66,378,846		
43	6/27/2009		\$49,258,266				\$15,250,905				\$64,509,171		
44	7/4/2009		\$53,393,355				\$16,270,619				\$69,663,974		
45	7/11/2009		\$53,127,756				\$16,914,922				\$70,042,678		
46	7/18/2009		\$51,593,146				\$17,752,738				\$69,345,884		
47	7/25/2009		\$49,902,181				\$16,706,145				\$66,608,326		
48	8/1/2009		\$49,605,420				\$16,254,383				\$65,859,803		
49	8/8/2009		\$50,961,907				\$16,770,496				\$67,732,403		
50	8/15/2009		\$49,452,511				\$16,749,487				\$66,201,998		
51	8/22/2009		\$49,249,518				\$17,286,302				\$66,535,820		
52	8/29/2009		\$49,468,928				\$18,109,997				\$67,578,925		
53	9/5/2009		\$6,054,239				\$493,109				\$6,547,348		
Total thru Current Week		\$380,953,212	\$420,012,790	(\$39,059,578)	-9.3%	\$116,041,225	\$130,380,204	(\$14,338,979)	-11.0%	\$496,994,437	\$550,392,994	(\$53,398,557)	-9.7%
Fiscal Year Total		\$380,953,212	\$2,783,836,095			\$116,041,225	\$887,641,858			\$496,994,437	\$3,671,477,953		

\*\* FY 2009 includes 6 days; FY 2008 includes 8 days

### Texas Lottery Commission Fiscal Year Over Year Change in Sales



Note: Week 1 is not a full week of sales as this report is prepared on a Fiscal Year basis.

Texas Lottery Commission  
Instant Tickets by Price Point  
Sales, Prize Expense, Sales Contribution and Payout Percentage With Year Over Year Changes  
Unaudited

Fiscal Year	Price Point	# of Active Games	FY Sales	Year over Year Change in Sales	FY Prize Expense	Year over Year Change in Prize Expense	FY Sales Contribution	Year over Year Change in Contribution	Average Prize Payout %	Year over Year Change in Payout %
2008	\$1.00	30	\$38,227,158		\$22,992,382		\$15,234,776		60.1%	0.1%
thru	\$2.00	29	\$71,881,478		\$46,735,923		\$25,145,555		65.0%	0.3%
10/27/2007	\$3.00	8	\$34,398,342		\$22,661,859		\$11,736,483		65.9%	0.1%
	\$5.00	25	\$113,574,905		\$76,937,103		\$36,637,802		67.7%	-0.4%
	\$7.00	8	\$27,572,636		\$18,737,950		\$8,834,686		68.0%	0.0%
	\$10.00	11	\$61,523,566		\$43,065,244		\$18,458,322		70.0%	-0.7%
	\$20.00	5	\$19,643,760		\$14,136,023		\$5,507,737		72.0%	0.0%
	\$25.00	2	\$23,483,675		\$17,045,619		\$6,438,056		72.6%	0.2%
	\$30.00	2	\$6,277,320		\$4,537,605		\$1,739,715		72.3%	0.0%
	\$50.00	1	\$23,429,950		\$16,897,525		\$6,532,425		72.1%	0.0%
<b>Total</b>		<b>121</b>	<b>\$420,012,790</b>		<b>\$283,747,233</b>		<b>\$136,265,557</b>		<b>67.6%</b>	<b>0.1%</b>
2009	\$1.00	20	\$31,848,094		\$19,238,943		\$12,609,151		60.4%	0.5%
thru	\$2.00	19	\$68,477,166		\$44,403,829		\$24,073,337		64.8%	-0.7%
10/25/2008	\$3.00	10	\$42,869,832		\$28,156,936		\$14,712,896		65.7%	0.0%
	\$5.00	25	\$115,843,164		\$78,794,037		\$37,049,127		68.0%	0.1%
	\$7.00	5	\$11,992,106		\$8,159,499		\$3,832,607		68.0%	0.1%
	\$10.00	11	\$47,571,940		\$33,294,507		\$14,277,433		70.0%	0.0%
	\$20.00	7	\$38,453,420		\$27,597,400		\$10,856,020		71.8%	0.0%
	\$25.00	1	\$2,140,200		\$1,556,218		\$583,982		72.7%	0.1%
	\$30.00	2	\$3,802,290		\$2,756,135		\$1,046,155		72.5%	0.1%
	\$50.00	3	\$17,955,000		\$12,984,034		\$4,970,966		72.3%	0.2%
<b>Total</b>		<b>103</b>	<b>\$380,953,212</b>		<b>\$256,941,537</b>		<b>\$124,011,675</b>		<b>67.4%</b>	<b>-0.3%</b>
Variance	\$1.00	-10	-\$6,379,064	-16.7%	-\$3,753,440	-16.3%	-\$2,625,624	-17.2%	0.26%	
2009 to	\$2.00	-10	-\$3,404,312	-4.7%	-\$2,332,094	-5.0%	-\$1,072,218	-4.3%	-0.17%	
2008	\$3.00	2	\$8,471,490	24.6%	\$5,495,078	24.2%	\$2,976,412	25.4%	-0.20%	
	\$5.00	0	\$2,268,259	2.0%	\$1,856,934	2.4%	\$411,325	1.1%	0.28%	
	\$7.00	-3	-\$15,580,530	-56.5%	-\$10,578,451	-56.5%	-\$5,002,079	-56.6%	0.08%	
	\$10.00	0	-\$13,951,626	-22.7%	-\$9,770,737	-22.7%	-\$4,180,889	-22.7%	-0.01%	
	\$20.00	2	\$18,809,660	95.8%	\$13,461,377	95.2%	\$5,348,283	97.1%	-0.19%	
	\$25.00	-1	-\$21,343,475	-90.9%	-\$15,489,401	-90.9%	-\$5,854,074	-90.9%	0.13%	
	\$30.00	0	-\$2,475,030	-39.4%	-\$1,781,470	-39.3%	-\$693,560	-39.9%	0.20%	
	\$50.00	2	-\$5,474,950	n/a	-\$3,913,492	n/a	-\$1,561,458	n/a	0.19%	
<b>Total</b>		<b>-18</b>	<b>-\$39,059,578</b>	<b>-9.3%</b>	<b>-\$26,805,696</b>	<b>-9.4%</b>	<b>-\$12,253,882</b>	<b>-9.0%</b>	<b>-0.11%</b>	

Texas Lottery Commission  
**Instant Tickets by Price Point**  
 Sales, Prize Expense, Sales Contribution and Payout Percentage With Year Over Year Changes  
 Unaudited

Notes - Instant Ticket Variances

		FY 2009	FY 2008	Difference
Sales	\$1 - \$7	\$271,030,362	\$285,654,519	-\$14,624,157
Prize Exp.	\$1 - \$7	\$178,753,244	\$188,065,217	-\$9,311,973
Sales Cont.	\$1 - \$7	\$92,277,118	\$97,589,302	-\$5,312,184
Prize Exp. %	\$1 - \$7	66.0%	65.8%	0.1%
		FY 2009	FY 2008	Difference
Sales	\$10 - \$50	\$109,922,850	\$134,358,271	-\$24,435,421
Prize Exp.	\$10 - \$50	\$78,188,293	\$95,682,016	-\$17,493,723
Sales Cont.	\$10 - \$50	\$31,734,557	\$38,676,255	-\$6,941,698
Prize Exp. %	\$10 - \$50	71.1%	71.2%	-0.1%
		FY 2009	FY 2008	Difference
Sales	Instant	\$380,953,212	\$420,012,790	-\$39,059,578
Prize Exp.	Instant	\$256,941,537	\$283,747,233	-\$26,805,696
Sales Cont.	Instant	\$124,011,675	\$136,265,557	-\$12,253,882
Prize Exp. %	Instant	67.4%	67.6%	-0.1%

		FY 2009	FY 2008	Difference
Sales	\$1 - \$10	\$318,602,302	\$347,178,085	-\$28,575,783
Prize Exp.	\$1 - \$10	\$212,047,751	\$231,130,461	-\$19,082,710
Sales Cont.	\$1 - \$10	\$106,554,551	\$116,047,624	-\$9,493,073
Prize Exp. %	\$1 - \$10	66.6%	66.6%	0.0%
		FY 2009	FY 2008	Difference
Sales	\$20 - \$50	\$62,350,910	\$72,834,705	-\$10,483,795
Prize Exp.	\$20 - \$50	\$44,893,786	\$52,616,772	-\$7,722,986
Sales Cont.	\$20 - \$50	\$17,457,124	\$20,217,933	-\$2,760,809
Prize Exp. %	\$20 - \$50	72.0%	72.2%	-0.2%
		FY 2009	FY 2008	Difference
Sales	Instant	\$380,953,212	\$420,012,790	-\$39,059,578
Prize Exp.	Instant	\$256,941,537	\$283,747,233	-\$26,805,696
Sales Cont.	Instant	\$124,011,675	\$136,265,557	-\$12,253,882
Prize Exp. %	Instant	67.4%	67.6%	-0.1%

Texas Lottery Commission  
**Weekly Sales Summary**  
**& Comparison to Previous Week**  
 Unaudited

	Week Ending 10/25/08		Week Ending 10/18/08			
	<u>THIS WEEK</u>	% of Sales	<u>LAST WEEK</u>	% of Sales	<u>\$ change</u>	<u>% change</u>
Total Sales	<u>\$64,503,424</u>		<u>\$64,466,993</u>		<u>\$36,431</u>	0.06%
Instant Tickets	<u>\$49,977,581</u>	77.5%	<u>\$49,299,053</u>	76.5%	<u>\$678,528</u>	1.38%
Lotto Texas	\$3,210,762	5.0%	\$3,780,438	5.9%	-\$569,676	-15.07%
Pick 3	\$5,099,671	7.9%	\$5,149,258	8.0%	-\$49,587	-0.96%
Pick 3 Sum It Up	\$107,105	0.2%	\$109,530	0.2%	-\$2,426	-2.21%
Cash 5	\$1,339,079	2.1%	\$1,355,601	2.1%	-\$16,522	-1.22%
Texas Two Step	\$789,649	1.2%	\$741,849	1.2%	\$47,800	6.44%
Mega Millions	\$2,456,965	3.8%	\$2,500,644	3.9%	-\$43,679	-1.75%
Megaplier	\$641,206	1.0%	\$652,198	1.0%	-\$10,992	-1.69%
Daily 4	\$778,434	1.2%	\$776,366	1.2%	\$2,068	0.27%
Daily 4 Sum It Up	<u>\$102,973</u>	0.2%	<u>\$102,056</u>	0.2%	<u>\$917</u>	0.90%
Total Online Sales	<u>\$14,525,843</u>		<u>\$15,167,940</u>		<u>-\$642,097</u>	-4.23%

\* Totals may not sum due to rounding.



Texas Lottery Commission  
Weekly Sales Summary  
Unaudited

INSTANT TICKETS  
TOP TEN SELLING GAMES

For the Week Ending : 10/25/08

Rank	Price Point	Game	Sales (Millions)
1	\$ 20	TEXAS \$50 MILLION CLUB	\$ 3.125
2	\$ 5	MERRY MONEY	\$ 2.964
3	\$ 3	BONUS CASHWORD	\$ 2.444
4	\$ 5	THE TEXAS RANGERS LIMITED EDITION SILVER SERIES	\$ 2.052
5	\$ 10	MATCH FOR CASH	\$ 2.038
6	\$ 10	SET FOR LIFE	\$ 1.975
7	\$ 5	JEWELS OF THE NILE	\$ 1.911
8	\$ 50	\$130,000,000 PLATINUM PAYOUT	\$ 1.702
9	\$ 20	\$1 MILLION DOUBLE ACTION	\$ 1.696
10	\$ 3	HOLIDAY PACKAGE	\$ 1.631

Texas Lottery Commission  
Prize Payout Tracking Report  
Unaudited

Through Week Ending 10/25/08

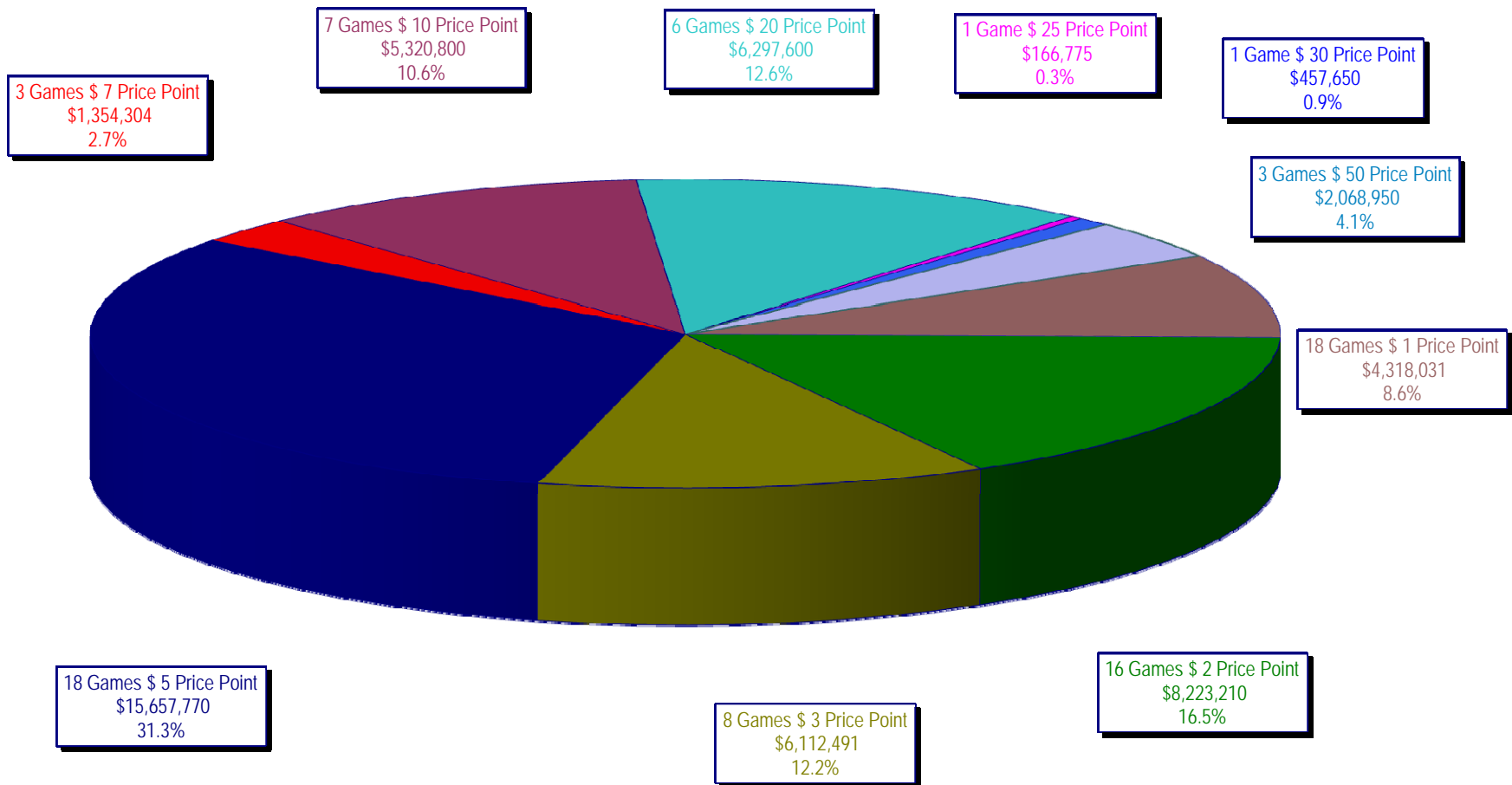
On-Line Sales

		FY Sales Through Week Ending 10/25/2008		FY Prize Expense Through Week Ending 10/25/2008	Actual* Prize Payout	Base Payout (Prize Pool)
Lotto	\$	27,170,004	\$	13,587,551	50.01%	50.00%
Pick 3		39,805,759		18,183,740	45.68%	50.00%
Pick 3 Sum It Up		866,308		386,889	44.66%	50.00%
Cash 5		10,497,682		5,329,573	50.77%	50.00%
Texas Two-Step		7,076,229		3,647,096	51.54%	50.00%
Mega Millions		18,908,209		9,047,375	47.85%	50.00%**
Megaplier		5,009,907		1,841,146	36.75%	N/A
Daily 4		5,902,825		2,414,475	40.90%	50.00%
Daily 4-Sum It Up		804,303		284,308	35.35%	50.00%
<b>Totals</b>	\$	<b>116,041,225</b>	\$	<b>54,722,153</b>	<b>47.16%</b>	

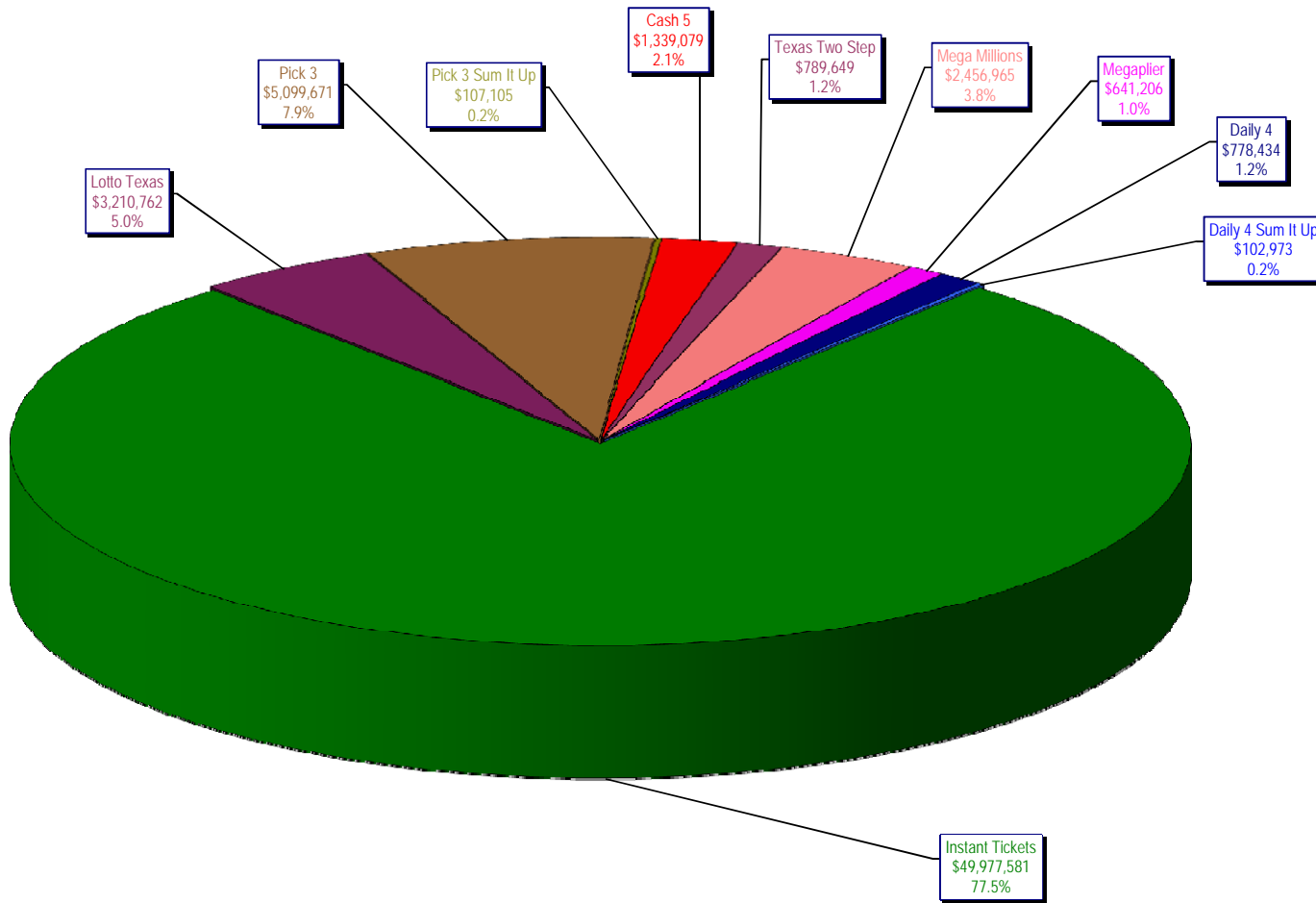
\* Before Unclaimed Prizes

\*\* Estimated; depends on # of guaranteed prizes won in Texas

Texas Lottery Commission  
Instant Ticket Sales  
For the Week Ending 10/25/2008  
(Unaudited)



Texas Lottery Commission  
**All Game Sales**  
For the Week Ending 10/25/2008  
(Unaudited)



\* Totals may not sum due to rounding.

