



WEEKLY SALES SUMMARY

Unaudited

Week Ending: 10/29/2016

Texas Lottery Commission
Fiscal Year to Date Sales Comparison
Unaudited

Through the Week Ending 10/29/2016 (9 Weeks)

Sales by Game	FY 2015 *	FY 2016 **	FY 2017	\$ Change		% Change	
				FY 2017 to FY 2015	FY 2017 to FY 2016	FY 2017 to FY 2015	FY 2017 to FY 2016
Scratch Tickets	\$ 546,410,016	\$ 564,647,122	\$ 576,952,027	\$ 30,542,011	\$ 12,304,905	5.6%	2.2%
Lotto Texas	20,663,401	22,556,016	18,580,196	-2,083,205	-3,975,820	-10.1%	-17.6%
Lotto Extra	3,108,609	3,778,379	3,519,764	411,155	-258,615	13.2%	-6.8%
Pick 3	42,366,863	42,319,041	39,339,937	-3,026,926	-2,979,104	-7.1%	-7.0%
Pick 3 Sum It Up	818,370	866,659	751,725	-66,645	-114,935	-8.1%	-13.3%
Cash Five	8,498,121	7,945,484	7,097,317	-1,400,804	-848,167	-16.5%	-10.7%
Texas Two Step	9,343,241	9,341,562	8,617,161	-726,080	-724,401	-7.8%	-7.8%
Mega Millions	29,145,373	20,234,711	17,130,790	-12,014,583	-3,103,921	-41.2%	-15.3%
Megaplier	6,536,028	5,111,306	4,694,685	-1,841,343	-416,621	-28.2%	-8.2%
Daily 4	14,026,646	14,393,905	14,471,227	444,582	77,323	3.2%	0.5%
Daily 4 Sum It Up	860,235	747,015	760,010	-100,225	12,995	-11.7%	1.7%
Powerball	31,989,443	38,342,385	32,056,128	66,685	-6,286,257	0.2%	-16.4%
Power Play	4,114,560	4,878,182	4,627,710	513,150	-250,472	12.5%	-5.1%
All or Nothing	6,854,246	5,416,428	4,689,804	-2,164,442	-726,624	-31.6%	-13.4%
Monopoly	842,770	-	-	-842,770	-	-100.0%	-
Texas Triple Chance	-	3,741,910	2,647,838	2,647,838	-1,094,072	-	-29.2%
Total	\$ 725,577,921	\$ 744,320,105	\$ 735,936,319	\$ 10,358,398	\$ -8,383,786	1.4%	-1.1%

* 3 extra days

** 2 extra days

Texas Lottery Commission
Fiscal Year to Date Cumulative Average Sales Comparison
Unaudited

Through the Week Ending 10/29/2016 (9 Weeks)

Sales by Game	FY 2015	FY 2016	FY 2017
Scratch Tickets	\$ 8,813,065	\$ 9,256,510	\$ 9,778,848
Lotto Texas	333,281	369,771	314,919
Lotto Extra	50,139	61,941	59,657
Pick 3	683,336	693,755	666,779
Pick 3 Sum It Up	13,200	14,208	12,741
Cash Five	137,066	130,254	120,294
Texas Two Step	150,697	153,140	146,054
Mega Millions	470,087	331,717	290,352
Megaplier	105,420	83,792	79,571
Daily 4	226,236	235,966	245,275
Daily 4 Sum It Up	13,875	12,246	12,882
Powerball	515,959	628,564	543,324
Power Play	66,364	79,970	78,436
All or Nothing	110,552	88,794	79,488
Monopoly	** 60,198	-	-
Texas Triple Chance	- *	106,912	44,879
Total	\$ <u>11,749,474</u>	\$ <u>12,247,538</u>	\$ <u>12,473,497</u>

thru 11/01/2014

62 days

** 14 days

thru 10/31/2015

61 days

* 35 days

thru 10/29/2016

59 days

Texas Lottery Commission
Fiscal Year Over Year Change in Sales
Unaudited
FY 2017 Compared to FY 2016

			SCRATCH TICKETS				DRAW GAMES				TOTAL SALES			
Week	FY 17 Week Ending		FY 2017	FY 2016	Difference	% change - Cumulative Sales	FY 2017	FY 2016	Difference	% change - Cumulative Sales	FY 2017	FY 2016	Difference	% change - Cumulative Sales
2	9/10/2016		\$65,952,418	\$61,566,291	\$4,386,127	7.1%	\$19,635,377	\$20,630,922	(\$995,545)	-4.8%	\$85,587,795	\$82,197,213	\$3,390,583	4.1%
3	9/17/2016		\$66,196,270	\$63,530,657	\$2,665,613	4.2%	\$20,915,290	\$20,327,253	\$588,037	2.9%	\$87,111,560	\$83,857,910	\$3,253,650	3.9%
4	9/24/2016		\$64,383,005	\$61,731,400	\$2,651,605	4.3%	\$17,451,165	\$22,252,290	(\$4,801,125)	-21.6%	\$81,834,170	\$83,983,690	(\$2,149,520)	-2.6%
5	10/1/2016		\$67,349,951	\$67,048,415	\$301,536	0.4%	\$17,519,852	\$25,436,791	(\$7,916,939)	-31.1%	\$84,869,803	\$92,485,206	(\$7,615,403)	-8.2%
6	10/8/2016		\$71,598,690	\$66,049,706	\$5,548,984	8.4%	\$18,211,107	\$18,138,977	\$72,130	0.4%	\$89,809,797	\$84,188,683	\$5,621,114	6.7%
7	10/15/2016		\$69,444,762	\$65,073,593	\$4,371,169	6.7%	\$18,075,261	\$17,776,414	\$298,847	1.7%	\$87,520,023	\$82,850,007	\$4,670,016	5.6%
8	10/22/2016		\$69,317,066	\$64,087,437	\$5,229,629	8.2%	\$18,422,336	\$18,450,464	(\$28,128)	-0.2%	\$87,739,402	\$82,537,901	\$5,201,501	6.3%
9	10/29/2016		\$69,729,599	\$66,025,374	\$3,704,225	5.6%	\$18,535,248	\$19,568,150	(\$1,032,902)	-5.3%	\$88,264,847	\$85,593,524	\$2,671,324	3.1%
10	11/5/2016			\$68,137,192				\$20,398,351				\$88,535,543		
11	11/12/2016			\$65,449,428				\$20,169,382				\$85,618,810		
12	11/19/2016			\$68,364,421				\$17,174,606				\$85,539,027		
13	11/26/2016			\$61,091,628				\$17,168,993				\$78,260,621		
14	12/3/2016			\$67,830,827				\$19,252,418				\$87,083,245		
15	12/10/2016			\$68,324,452				\$19,529,408				\$87,853,860		
16	12/17/2016			\$71,041,258				\$20,824,840				\$91,866,098		
17	12/24/2016			\$78,125,965				\$22,586,417				\$100,712,382		
18	12/31/2016			\$76,712,975				\$27,972,880				\$104,685,855		
19	1/7/2017			\$77,136,541				\$127,289,478				\$204,426,019		
20	1/14/2017			\$73,858,865				\$140,104,126				\$213,962,991		
21	1/21/2017			\$70,665,700				\$20,781,745				\$91,447,445		
22	1/28/2017			\$71,051,685				\$20,433,401				\$91,485,086		
23	2/4/2017			\$78,458,428				\$21,274,800				\$99,733,228		
24	2/11/2017			\$80,754,850				\$21,391,919				\$102,146,769		
25	2/18/2017			\$80,078,271				\$21,911,382				\$101,989,653		
26	2/25/2017			\$78,832,217				\$22,823,086				\$101,655,303		
27	3/4/2017			\$80,019,524				\$23,146,906				\$103,166,430		
28	3/11/2017			\$78,524,214				\$19,311,625				\$97,835,839		
29	3/18/2017			\$75,446,960				\$18,001,000				\$93,447,960		
30	3/25/2017			\$75,293,759				\$18,553,964				\$93,847,723		
31	4/1/2017			\$79,316,221				\$19,482,563				\$98,798,784		
32	4/8/2017			\$74,560,898				\$20,100,629				\$94,661,527		
33	4/15/2017			\$74,056,586				\$20,677,413				\$94,733,999		
34	4/22/2017			\$73,110,080				\$20,313,339				\$93,423,419		
35	4/29/2017			\$73,448,019				\$22,666,626				\$96,114,645		
36	5/6/2017			\$77,593,399				\$33,262,968				\$110,856,367		
37	5/13/2017			\$75,263,676				\$20,250,149				\$95,513,825		
38	5/20/2017			\$74,274,808				\$19,605,983				\$93,880,791		
39	5/27/2017			\$71,562,728				\$20,150,232				\$91,712,960		
40	6/3/2017			\$73,085,109				\$21,067,550				\$94,152,659		
41	6/10/2017			\$70,593,768				\$21,389,794				\$91,983,562		
42	6/17/2017			\$69,501,864				\$22,402,713				\$91,904,577		

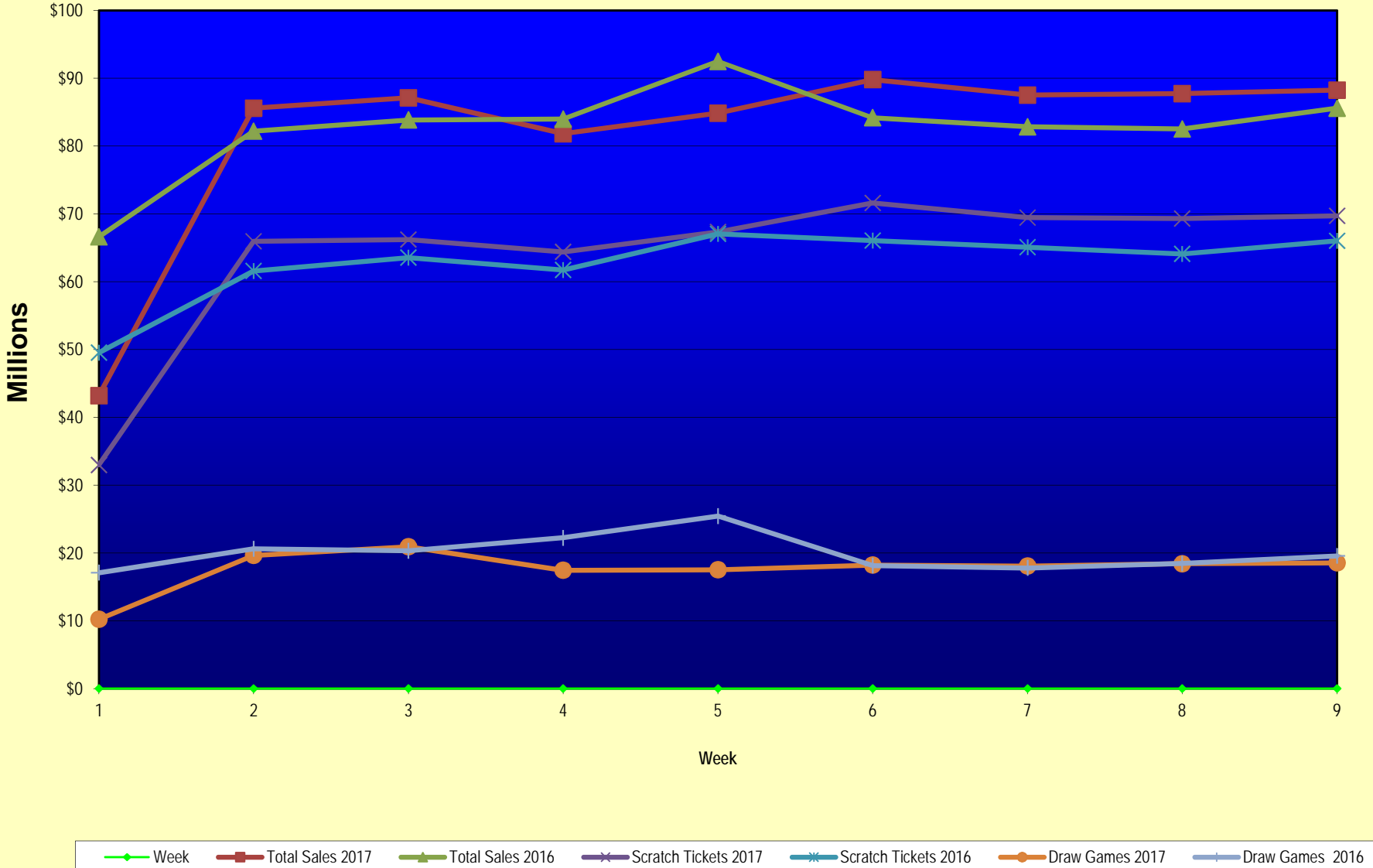
Texas Lottery Commission
Fiscal Year Over Year Change in Sales
Unaudited
FY 2017 Compared to FY 2016

			SCRATCH TICKETS				DRAW GAMES				TOTAL SALES			
FY 2017														
Week	Week Ending		FY 2017	FY 2016	Difference	% change - Cumulative Sales	FY 2017	FY 2016	Difference	% change - Cumulative Sales	FY 2017	FY 2016	Difference	% change - Cumulative Sales
43	6/24/2017			\$69,243,660				\$24,290,311				\$93,533,971		
44	7/1/2017			\$70,782,313				\$29,331,406				\$100,113,719		
45	7/8/2017			\$67,636,625				\$38,673,314				\$106,309,939		
46	7/15/2017			\$68,064,720				\$21,311,938				\$89,376,658		
47	7/22/2017			\$69,509,821				\$21,982,689				\$91,492,510		
48	7/29/2017			\$64,486,970				\$30,699,953				\$95,186,923		
49	8/5/2017			\$69,206,183				\$18,277,075				\$87,483,258		
50	8/12/2017			\$67,165,060				\$18,101,640				\$85,266,700		
51	8/19/2017			\$69,067,938				\$18,981,681				\$88,049,619		
52	8/26/2017			\$67,821,162				\$19,606,571				\$87,427,733		
	8/31/2017 **			\$36,609,542				\$9,310,254				\$45,919,796		
Total thru Current Week			\$576,952,027	\$564,647,122	\$12,304,905	2.2%	\$158,984,292	\$179,672,983	(\$20,688,691)	-11.5%	\$735,936,319	\$744,320,105	(\$8,383,786)	-1.1%
Fiscal Year Total			\$576,952,027	\$3,715,807,432			\$158,984,292	\$1,351,710,491			\$735,936,319	\$5,067,517,923		

* FY 17 includes 3 days; FY 16 includes 5 days

** FY 17 includes 5 days; FY 16 includes 4 days

Texas Lottery Commission Fiscal Year Over Year Change in Sales



Note: Week 1 is not a full week of sales as this report is prepared on a Fiscal Year basis.

Texas Lottery Commission
Scratch Tickets by Price Point
Sales, Prize Expense, Sales Contribution and Payout Percentage With Year Over Year Changes
Unaudited

Fiscal Year	Price Point	# of Active Games	FY Sales	% of Scratch Ticket Sales	Year over Year Change in Sales	FY Prize Expense	Year over Year Change in Prize Expense	FY Sales Contribution	Year over Year Change in Contribution	Average Prize Payout %	Year over Year Change in Payout %
2016	\$1.00	13	25,167,699	4.5%		15,301,852		9,865,847		60.8%	0.5%
Through	\$2.00	21	55,092,304	9.8%		35,874,344		19,217,960		65.1%	-0.6%
10/31/2015	\$3.00	9	50,447,529	8.9%		33,191,316		17,256,213		65.8%	-0.2%
	\$5.00	37	179,239,080	31.7%		121,772,040		57,467,040		67.9%	0.0%
	\$10.00	14	115,200,470	20.4%		80,728,413		34,472,057		70.1%	-0.3%
	\$20.00	9	111,255,340	19.7%		83,377,324		27,878,016		74.9%	0.0%
	\$50.00	3	28,244,700	5.0%		21,966,446		6,278,254		77.8%	0.0%
Total		106	\$564,647,122			\$392,211,735		\$172,435,387		69.5%	0.0%
2017	\$1.00	16	23,808,790	4.1%		14,486,892		9,321,898		60.8%	1.0%
Through	\$2.00	21	49,338,064	8.6%		32,140,893		17,197,171		65.1%	-0.1%
10/29/2016	\$3.00	8	39,122,793	6.8%		25,793,767		13,329,027		65.9%	0.1%
	\$5.00	35	183,402,590	31.8%		124,588,082		58,814,508		67.9%	0.0%
	\$10.00	13	114,517,090	19.8%		81,012,639		33,504,451		70.7%	0.8%
	\$20.00	10	141,571,800	24.5%		106,080,279		35,491,521		74.9%	0.0%
	\$50.00	4	25,190,900	4.4%		19,603,932		5,586,968		77.8%	0.0%
Total		107	\$576,952,027			\$403,706,484		\$173,245,543		70.0%	0.6%
Variance	\$1.00	3	-1,358,909		-5.4%	-814,959	-5.3%	-543,950	-5.5%	0.05%	
2017 to	\$2.00	0	-5,754,240		-10.4%	-3,733,451	-10.4%	-2,020,789	-10.5%	0.03%	
2016	\$3.00	-1	-11,324,736		-22.4%	-7,397,549	-22.3%	-3,927,187	-22.8%	0.14%	
	\$5.00	-2	4,163,510		2.3%	2,816,042	2.3%	1,347,468	2.3%	-0.01%	
	\$10.00	-1	-683,380		-0.6%	284,226	0.4%	-967,606	-2.8%	0.67%	
	\$20.00	1	30,316,460		27.2%	22,702,955	27.2%	7,613,505	27.3%	-0.01%	
	\$50.00	1	-3,053,800		-10.8%	-2,362,514	-10.8%	-691,286	-11.0%	0.05%	
Total		1	\$12,304,905		2.2%	\$11,494,750	2.9%	\$810,155	0.5%	0.51%	

Notes - Scratch Ticket Variances

Texas Lottery Commission
Scratch Tickets by Price Point
Sales, Prize Expense, Sales Contribution and Payout Percentage With Year Over Year Changes
Unaudited

			FY 2017		FY 2016	Difference
Sales	\$1 - \$5		\$295,672,237		\$309,946,612	-\$14,274,375
Prize Exp.	\$1 - \$5		\$197,009,634		\$206,139,552	-\$9,129,917
Sales Cont.	\$1 - \$5		\$98,662,603		\$103,807,060	-\$5,144,458
Prize Exp. %	\$1 - \$5		66.6%		66.5%	0.1%
			FY 2017		FY 2016	Difference
Sales	\$10 - \$50		\$281,279,790		\$254,700,510	\$26,579,280
Prize Exp.	\$10 - \$50		\$206,696,850		\$186,072,183	\$20,624,667
Sales Cont.	\$10 - \$50		\$74,582,940		\$68,628,327	\$5,954,613
Prize Exp. %	\$10 - \$50		73.5%		73.1%	0.4%
			FY 2017		FY 2016	Difference
Sales	Scratch		\$576,952,027		\$564,647,122	\$12,304,905
Prize Exp.	Scratch		\$403,706,484		\$392,211,735	\$11,494,750
Sales Cont.	Scratch		\$173,245,543		\$172,435,387	\$810,155
Prize Exp. %	Scratch		70.0%		69.5%	0.5%

			FY 2017		FY 2016	Difference
Sales	\$1 - \$10		\$410,189,327		\$425,147,082	-\$14,957,755
Prize Exp.	\$1 - \$10		\$278,022,273		\$286,867,965	-\$8,845,692
Sales Cont.	\$1 - \$10		\$132,167,054		\$138,279,117	-\$6,112,063
Prize Exp. %	\$1 - \$10		67.8%		67.5%	0.3%
			FY 2017		FY 2016	Difference
Sales	\$20 - \$50		\$166,762,700		\$139,500,040	\$27,262,660
Prize Exp.	\$20 - \$50		\$125,684,211		\$105,343,770	\$20,340,441
Sales Cont.	\$20 - \$50		\$41,078,489		\$34,156,270	\$6,922,219
Prize Exp. %	\$20 - \$50		75.4%		75.5%	-0.1%
			FY 2017		FY 2016	Difference
Sales	Scratch		\$576,952,027		\$564,647,122	\$12,304,905
Prize Exp.	Scratch		\$403,706,484		\$392,211,735	\$11,494,750
Sales Cont.	Scratch		\$173,245,543		\$172,435,387	\$810,155
Prize Exp. %	Scratch		70.0%		69.5%	0.5%

Texas Lottery Commission
Weekly Sales Summary
& Comparison to Previous Week
 Unaudited

	Week Ending 10/29/2016	% of Sales	Week Ending 10/22/2016	% of Sales	\$ change	% change
	<u>THIS WEEK</u>		<u>LAST WEEK</u>			
Total Sales	<u>\$88,264,847</u>		<u>\$87,739,402</u>		<u>\$525,445</u>	0.60%
Scratch Tickets	<u>\$69,729,599</u>	79.0%	<u>\$69,317,066</u>	79.0%	<u>\$412,533</u>	0.60%
Lotto	\$2,269,908	2.6%	\$2,222,089	2.5%	\$47,819	2.15%
Lotto Extra	\$430,487	0.5%	\$420,632	0.5%	\$9,855	2.34%
Pick 3	\$4,511,234	5.1%	\$4,457,898	5.1%	\$53,336	1.20%
Pick 3 Sum It Up	\$86,114	0.1%	\$84,115	0.1%	\$1,999	2.38%
Cash Five	\$833,125	0.9%	\$836,942	1.0%	-\$3,817	-0.46%
Texas Two Step	\$779,029	0.9%	\$1,260,293	1.4%	-\$481,264	-38.19%
Mega Millions	\$1,781,093	2.0%	\$1,714,985	2.0%	\$66,108	3.85%
Megaplier	\$500,203	0.6%	\$482,408	0.5%	\$17,795	3.69%
Daily 4	\$1,711,520	1.9%	\$1,636,471	1.9%	\$75,049	4.59%
Daily 4 Sum It Up	\$88,083	0.1%	\$83,009	0.1%	\$5,074	6.11%
Powerball	\$4,097,116	4.6%	\$3,800,444	4.3%	\$296,672	7.81%
Power Play	\$575,614	0.7%	\$542,655	0.6%	\$32,959	6.07%
All or Nothing	\$565,102	0.6%	\$564,808	0.6%	\$294	0.05%
Texas Triple Chance	\$306,622	0.3%	\$315,588	0.4%	-\$8,966	-2.84%
Total Draw Game Sales	<u>\$18,535,248</u>		<u>\$18,422,336</u>		<u>\$112,912</u>	0.61%

* Totals may not sum due to rounding.

Texas Lottery Commission
Weekly Sales Summary
Unaudited

SCRATCH TICKETS
TOP TEN SELLING GAMES

For the week ending: 10/29/2016

Rank	Price Point	Game	Sales (Millions)
1	\$ 20	SUPER BREAK THE BANK	\$ 5.691
2	\$ 10	\$200 MILLION PAYOUT	\$ 3.901
3	\$ 20	100X THE CASH	\$ 3.351
4	\$ 5	SUPER LOTERIA	\$ 3.284
5	\$ 5	GARLAND RICHES	\$ 3.106
6	\$ 50	\$7,500,000 ULTIMATE CASH	\$ 2.966
7	\$ 10	CASHWORD MULTIPLIER	\$ 2.841
8	\$ 10	CASINO CASH	\$ 2.731
9	\$ 20	\$1,000,000 RICHES	\$ 2.274
10	\$ 20	HIT \$1,000,000	\$ 2.132

Texas Lottery Commission
Prize Payout Tracking Report
Unaudited

Through the week ending: 10/29/16

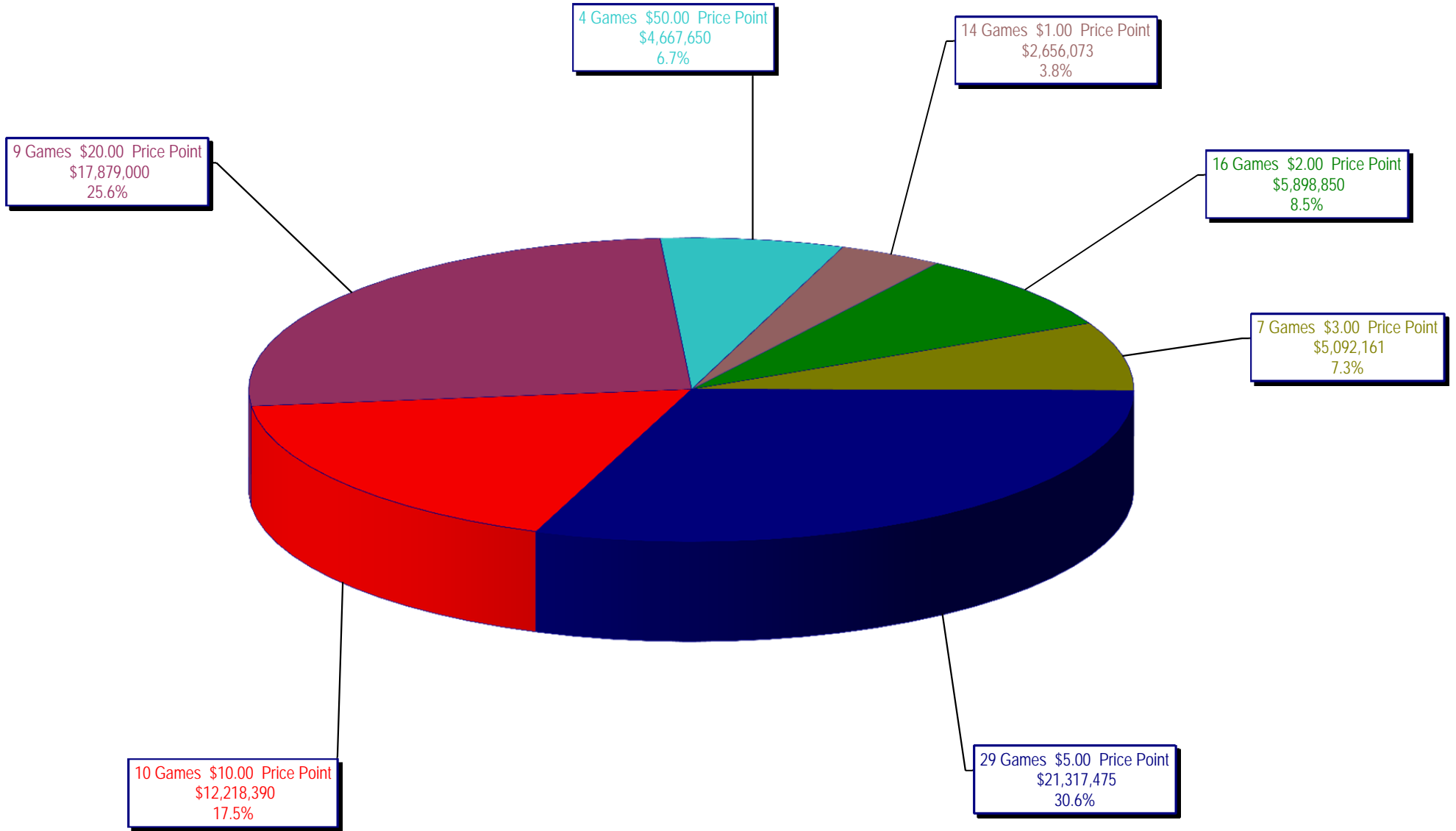
Draw Game Sales

		FY Sales Through Week Ending 10/29/2016		FY Prize Expense Through Week Ending 10/29/2016	Actual* Prize Payout	Base Payout (Prize Pool)
Lotto	\$	18,580,196	\$	9,291,071	50.01%	50.00%
Lotto Extra		3,519,764		1,862,498	52.92%	53.70%
Pick 3		39,339,937		19,944,150	50.70%	50.00%
Pick 3 Sum It Up		751,725		371,653	49.44%	50.00%
Cash Five		7,097,317		3,548,784	50.00%	50.00%
Texas Two Step		8,617,161		4,530,711	52.58%	50.00%
Mega Millions		17,130,790		8,779,108	51.25%	50.00%**
Megaplier		4,694,685		2,357,516	50.22%	N/A
Daily 4		14,471,227		6,221,575	42.99%	50.00%
Daily 4 Sum It Up		760,010		332,799	43.79%	50.00%
Powerball		32,056,128		16,048,453	50.06%	50.00%**
Power Play		4,627,710		2,318,298	50.10%	N/A
All or Nothing		4,689,804		2,768,326	59.03%	55.98%
Texas Triple Chance		2,647,838		1,408,493	53.19%	54.42%
Totals	\$	158,984,292	\$	79,783,435	50.18%	

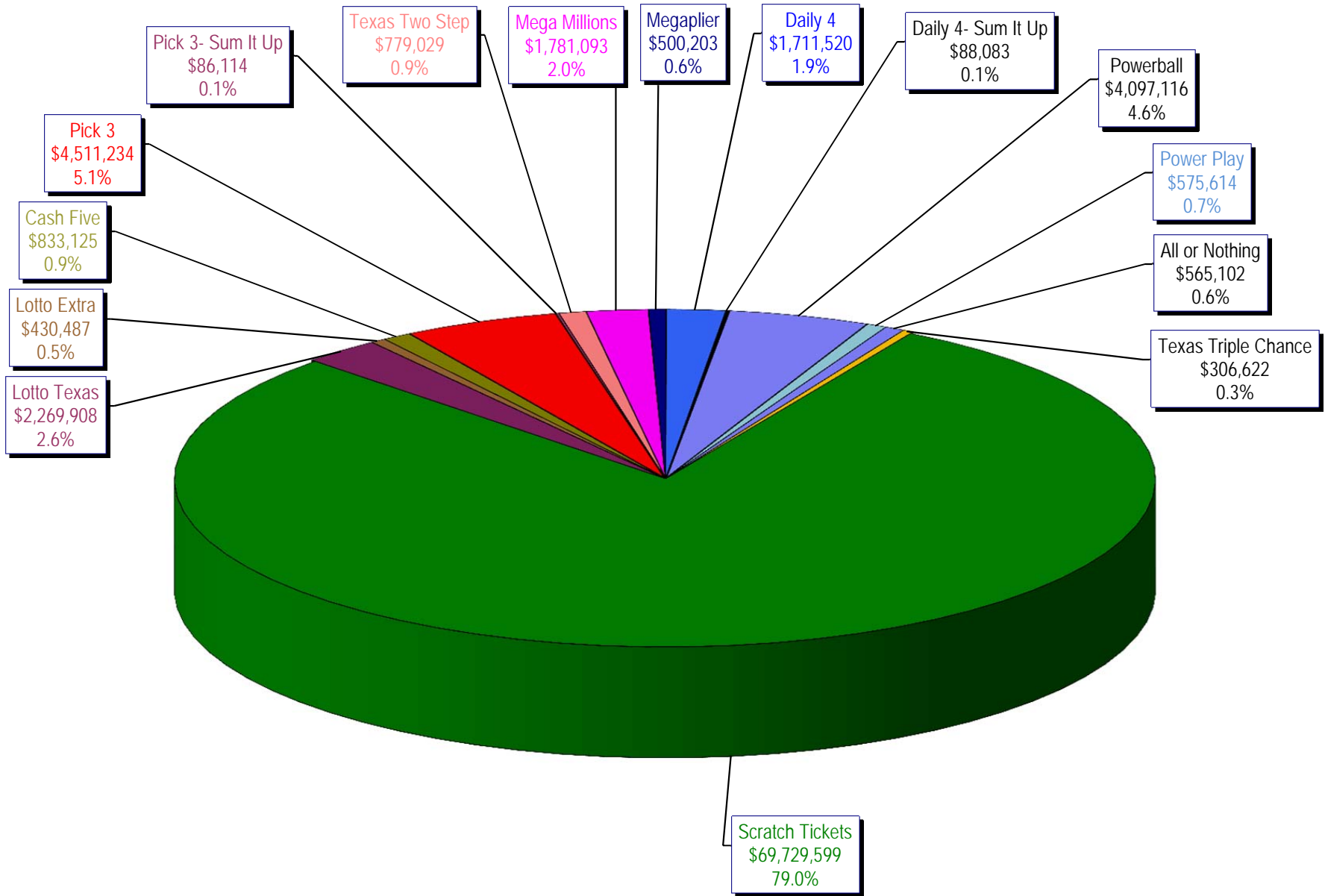
* Before Unclaimed Prizes

**Estimated; depends on # of guaranteed prizes won in Texas

Texas Lottery Commission
Scratch Ticket Sales
For the week ending 10/29/16
(Unaudited)



Texas Lottery Commission
All Game Sales
For the week ending 10/29/16
(Unaudited)



Texas Lottery Commission - Weekly Sales Summary for FY 2017 (Unaudited)

Week Ended	Scratch Tickets	New Games & Dates	Lotto Texas	Jackpot		Lotto Extra	Pick 3	Pick 3 Sum It Up	Cash Five	Texas Two Step	Jackpot		Mega Millions	Jackpot		Megaplier	Daily 4	Daily 4 Sum It Up	Powerball	Jackpot		Power Play	All or Nothing	Texas Triple Chance	Total	Per Cap.	
				W	S						M	TH		T	F					W	S						
9/3/2016*	69,589,808	0	2,106,552	8.75	9.25	402,665	4,798,985	92,214	843,135	810,947	200	200	2,331,141	84	92	631,299	1,788,614	96,398	4,189,234	154	170	603,430	528,102	306,194	89,118,717	3.24	
9/10/2016	65,952,418	1810 (\$1.N); 1809 (\$1.N); 1811 (\$5.N) - 9/06/16	2,095,828	9.75	10.25	399,944	4,590,651	86,697	818,614	862,148	225	275	2,490,552	101	111	655,066	1,647,119	87,455	4,473,836	186	205	628,810	506,718	291,940	85,587,795	3.12	
9/17/2016	66,196,270	0	2,127,440	11	11.75	405,936	4,553,039	86,110	822,240	1,180,444	400	550	2,661,252	122	133	692,583	1,705,629	91,610	5,096,928	222	244	696,626	503,466	291,988	87,111,560	3.17	
9/24/2016	64,383,005	1793 (\$2.N); 1782 (\$5.N); 1781 (\$10.N) - 9/19/16	2,141,721	12.25	13	404,127	4,551,066	83,958	811,604	1,465,789	700	900	1,733,288	15	20	489,347	1,680,793	90,386	2,790,676	40	50	429,512	503,041	275,858	81,834,170	2.98	
10/1/2016	67,349,951	0	2,203,652	13.25	14	414,603	4,642,047	91,016	857,979	816,836	200	225	1,840,801	25	30	515,384	1,688,464	88,184	2,960,772	60	70	455,619	589,964	354,532	84,869,803	3.09	
10/8/2016	71,598,690	1772 (\$1.N); 1770 (\$2.N); 1813 (\$5.N); 1779 (\$20.N) - 10/03/16	2,211,941	14.5	15.5	419,062	4,900,537	94,965	867,520	849,234	200	225	1,925,289	35	41	540,723	1,780,544	92,908	3,109,092	80	91	471,027	611,898	336,368	89,809,797	3.27	
10/15/2016	69,444,762	0	2,207,002	16	16.75	416,802	4,549,017	89,171	836,548	1,024,493	300	425	1,780,458	49	15	496,567	1,679,519	87,007	3,499,528	107	122	510,617	577,343	321,190	87,520,023	3.19	
10/22/2016	69,317,066	1814 (\$3.N); 1815 (\$5.N); 1832 (\$50.N) - 10/17/16	2,222,089	17	18	420,632	4,457,898	84,115	836,942	1,260,293	575	750	1,714,985	20	25	482,408	1,636,471	83,009	3,800,444	136	151	542,655	564,808	315,588	87,739,402	3.19	
10/29/2016	69,729,599	0	2,269,908	18.5	19.25	430,487	4,511,234	86,114	833,125	779,029	200	200	1,781,093	30	35	500,203	1,711,520	88,083	4,097,116	164	180	575,614	565,102	306,622	88,264,847	3.21	
weekly change	0.6%		2.2%			2.3%	1.2%	2.4%	-0.5%	-38.2%			3.9%			3.7%	4.6%	6.1%	7.8%		6.1%	0.1%	-2.8%		0.6%		
	SALES		SALES			SALES	SALES	SALES	SALES	SALES			SALES			SALES	SALES	SALES	SALES		SALES	SALES	SALES	SALES	SALES	% of Sales	
Calendar Year to date	3,125,199,671		96,856,026			17,965,974	209,962,685	4,274,905	37,574,295	45,582,676			130,904,020			33,395,181	75,585,341	4,091,694	411,568,267		47,900,302	24,620,060	16,632,091	4,282,113,188	100.0%		
Fiscal Year to date 2017	576,952,027		18,580,196			3,519,764	39,339,937	751,725	7,097,317	8,617,161			17,130,790			4,694,685	14,471,227	760,010	32,056,128		4,627,710	4,689,804	2,647,838	735,936,319	100.0%		
*Full week includes 4 days from FY16																											