



*WEEKLY SALES SUMMARY*

Unaudited

[Week Ending: 10/31/2015](#)

Texas Lottery Commission  
Fiscal Year to Date Sales Comparison  
Unaudited

Through the Week Ending 10/31/2015 (9 Weeks)

Sales by Game	FY 2014 *	FY 2015 **	FY 2016	\$ Change		% Change	
				FY 2016 to FY 2014	FY 2016 to FY 2015	FY 2016 to FY 2014	FY 2016 to FY 2015
Scratch Tickets	\$ 537,554,970	\$ 546,410,016	\$ 564,647,122	\$ 27,092,152	\$ 18,237,106	5.0%	3.3%
Lotto Texas	23,770,935	20,663,401	22,556,016	-1,214,919	1,892,615	-5.1%	9.2%
Lotto Extra	2,971,948	3,108,609	3,778,379	806,431	669,770	27.1%	21.5%
Pick 3	43,434,421	42,366,863	42,319,041	-1,115,380	-47,822	-2.6%	-0.1%
Pick 3 Sum It Up	863,132	818,370	866,659	3,528	48,290	0.4%	5.9%
Cash Five	9,098,142	8,498,121	7,945,484	-1,152,658	-552,637	-12.7%	-6.5%
Texas Two Step	9,144,053	9,343,241	9,341,562	197,509	-1,679	2.2%	0.0%
Mega Millions	23,326,022	29,145,373	20,234,711	-3,091,311	-8,910,662	-13.3%	-30.6%
Megaplier	5,145,898	6,536,028	5,111,306	-34,592	-1,424,722	-0.7%	-21.8%
Daily 4	14,117,379	14,026,646	14,393,905	276,526	367,259	2.0%	2.6%
Daily 4 Sum It Up	874,112	860,235	747,015	-127,097	-113,220	-14.5%	-13.2%
Powerball	47,669,117	31,989,443	38,342,385	-9,326,732	6,352,942	-19.6%	19.9%
Power Play	5,306,092	4,114,560	4,878,182	-427,910	763,622	-8.1%	18.6%
All or Nothing	8,467,814	6,854,246	5,416,428	-3,051,386	-1,437,818	-36.0%	-21.0%
Monopoly	-	842,770	-	-	-842,770	-	-100.0%
Texas Triple Chance	-	-	3,741,910	3,741,910	3,741,910	-	-
<b>Total</b>	<b>\$ 731,744,033</b>	<b>\$ 725,577,921</b>	<b>\$ 744,320,105</b>	<b>\$ 12,576,072</b>	<b>\$ 18,742,184</b>	<b>1.7%</b>	<b>2.6%</b>

\* 2 extra days

\*\* 1 extra day

Texas Lottery Commission  
Fiscal Year to Date Cumulative Average Sales Comparison  
Unaudited

Through the Week Ending 10/31/2015 (9 Weeks)

Sales by Game	FY 2014	FY 2015	FY 2016
Scratch Tickets	\$ 8,532,619	\$ 8,813,065	\$ 9,256,510
Lotto Texas	377,316	333,281	369,771
Lotto Extra	47,174	50,139	61,941
Pick 3	689,435	683,336	693,755
Pick 3 Sum It Up	13,701	13,200	14,208
Cash Five	144,415	137,066	130,254
Texas Two Step	145,144	150,697	153,140
Mega Millions	370,254	470,087	331,717
Megaplier	81,681	105,420	83,792
Daily 4	224,085	226,236	235,966
Daily 4 Sum It Up	13,875	13,875	12,246
Powerball	756,653	515,959	628,564
Power Play	84,224	66,364	79,970
All or Nothing	134,410	110,552	88,794
Monopoly	- **	60,198	-
Texas Triple Chance	- *	-	106,912
<b>Total</b>	<b>\$ <u>11,614,985</u></b>	<b>\$ <u>11,749,474</u></b>	<b>\$ <u>12,247,538</u></b>

thru 11/02/2013  
63 days

\*\*

thru 11/01/2014  
62 days  
14 days

\*

thru 10/31/2015  
61 days  
35 days

Texas Lottery Commission  
Fiscal Year Over Year Change in Sales  
Unaudited  
FY 2016 Compared to FY 2015

			SCRATCH TICKETS				DRAW GAMES				TOTAL SALES			
Week	FY 2016		FY 2015	Difference	% change - Cumulative Sales	FY 2016	FY 2015	Difference	% change - Cumulative Sales	FY 2016	FY 2015	Difference	% change - Cumulative Sales	
	Week	Ending												
1	9/5/2015	*	\$49,534,249	\$54,911,801	(\$5,377,552)	-9.8%	\$17,091,724	\$17,482,488	(\$390,765)	-2.2%	\$66,625,973	\$72,394,289	(\$5,768,317)	-8.0%
2	9/12/2015		\$61,566,291	\$61,436,533	\$129,758	0.2%	\$20,630,922	\$19,097,081	\$1,533,841	8.0%	\$82,197,213	\$80,533,614	\$1,663,599	2.1%
3	9/19/2015		\$63,530,657	\$60,959,234	\$2,571,423	4.2%	\$20,327,253	\$20,567,894	(\$240,641)	-1.2%	\$83,857,910	\$81,527,128	\$2,330,782	2.9%
4	9/26/2015		\$61,731,400	\$59,710,056	\$2,021,344	3.4%	\$22,252,290	\$19,920,828	\$2,331,462	11.7%	\$83,983,690	\$79,630,884	\$4,352,806	5.5%
5	10/3/2015		\$67,048,415	\$62,119,854	\$4,928,561	7.9%	\$25,436,791	\$18,531,421	\$6,905,370	37.3%	\$92,485,206	\$80,651,275	\$11,833,931	14.7%
6	10/10/2015		\$66,049,706	\$61,253,665	\$4,796,041	7.8%	\$18,138,977	\$18,985,332	(\$846,355)	-4.5%	\$84,188,683	\$80,238,997	\$3,949,687	4.9%
7	10/17/2015		\$65,073,593	\$60,230,048	\$4,843,545	8.0%	\$17,776,414	\$19,538,402	(\$1,761,988)	-9.0%	\$82,850,007	\$79,768,450	\$3,081,558	3.9%
8	10/24/2015		\$64,087,437	\$62,384,112	\$1,703,325	2.7%	\$18,450,464	\$21,475,643	(\$3,025,179)	-14.1%	\$82,537,901	\$83,859,755	(\$1,321,854)	-1.6%
9	10/31/2015		\$66,025,374	\$63,404,713	\$2,620,661	4.1%	\$19,568,150	\$23,568,817	(\$4,000,668)	-17.0%	\$85,593,524	\$86,973,530	(\$1,380,007)	-1.6%
10	11/7/2015			\$65,486,719				\$23,749,032				\$89,235,751		
11	11/14/2015			\$61,745,521				\$17,449,604				\$79,195,125		
12	11/21/2015			\$66,353,583				\$17,108,084				\$83,461,667		
13	11/28/2015			\$60,471,184				\$17,303,129				\$77,774,313		
14	12/5/2015			\$66,648,696				\$18,862,425				\$85,511,121		
15	12/12/2015			\$65,708,630				\$18,649,598				\$84,358,228		
16	12/19/2015			\$68,551,298				\$19,051,100				\$87,602,398		
17	12/26/2015			\$73,858,618				\$20,006,357				\$93,864,975		
18	1/2/2016			\$67,733,268				\$21,355,167				\$89,088,435		
19	1/9/2016			\$64,745,641				\$22,265,347				\$87,010,988		
20	1/16/2016			\$64,015,166				\$23,694,617				\$87,709,783		
21	1/23/2016			\$62,569,156				\$19,765,442				\$82,334,598		
22	1/30/2016			\$68,001,588				\$22,877,000				\$90,878,588		
23	2/6/2016			\$75,677,650				\$31,662,209				\$107,339,859		
24	2/13/2016			\$75,368,712				\$46,091,747				\$121,460,459		
25	2/20/2016			\$74,833,076				\$19,865,172				\$94,698,248		
26	2/27/2016			\$69,918,013				\$19,735,352				\$89,653,365		
27	3/5/2016			\$74,848,961				\$19,946,068				\$94,795,029		
28	3/12/2016			\$70,079,409				\$20,044,562				\$90,123,971		
29	3/19/2016			\$70,368,686				\$18,480,795				\$88,849,481		
30	3/26/2016			\$70,280,600				\$17,595,205				\$87,875,805		
31	4/2/2016			\$74,369,952				\$18,378,917				\$92,748,869		
32	4/9/2016			\$67,416,817				\$18,594,844				\$86,011,661		
33	4/16/2016			\$68,393,316				\$18,104,632				\$86,497,948		
34	4/23/2016			\$70,078,182				\$17,957,150				\$88,035,332		
35	4/30/2016			\$71,744,718				\$18,961,113				\$90,705,831		
36	5/7/2016			\$73,415,978				\$20,210,341				\$93,626,319		
37	5/14/2016			\$72,152,109				\$20,362,774				\$92,514,883		
38	5/21/2016			\$70,399,950				\$21,246,276				\$91,646,226		
39	5/28/2016			\$68,547,554				\$22,227,946				\$90,775,500		
40	6/4/2016			\$71,254,006				\$20,739,703				\$91,993,709		
41	6/11/2016			\$65,878,375				\$17,216,403				\$83,094,778		
42	6/18/2016			\$66,658,742				\$17,340,531				\$83,999,273		

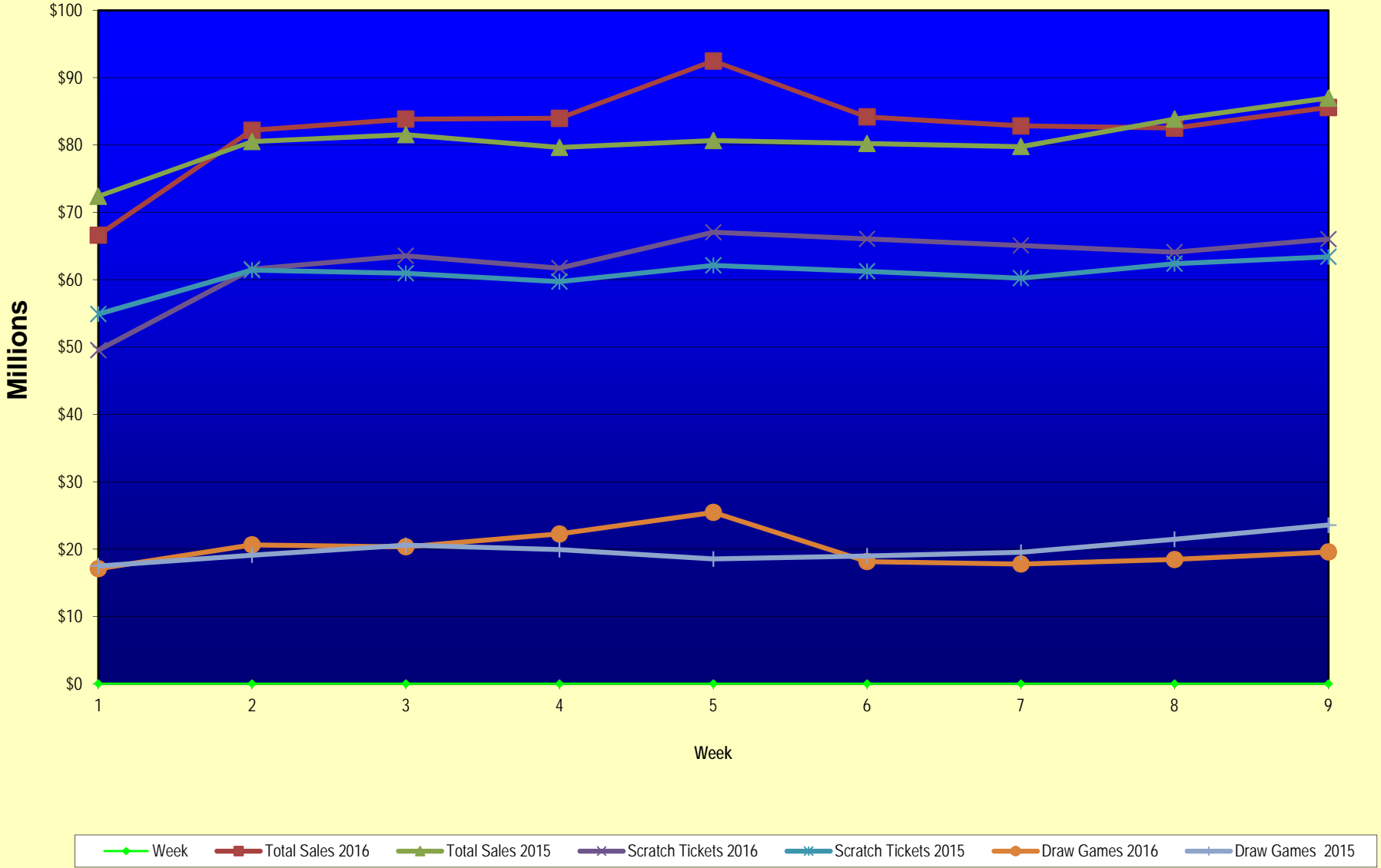
Texas Lottery Commission  
Fiscal Year Over Year Change in Sales  
Unaudited  
FY 2016 Compared to FY 2015

			SCRATCH TICKETS				DRAW GAMES				TOTAL SALES			
FY 2016			FY 2016	FY 2015	Difference	% change - Cumulative Sales	FY 2016	FY 2015	Difference	% change - Cumulative Sales	FY 2016	FY 2015	Difference	% change - Cumulative Sales
Week	Week	Ending												
43	6/25/2016			\$65,282,276				\$16,873,368				\$82,155,644		
44	7/2/2016			\$67,757,752				\$18,007,540				\$85,765,292		
45	7/9/2016			\$64,718,254				\$18,203,985				\$82,922,239		
46	7/16/2016			\$64,957,977				\$18,792,785				\$83,750,762		
47	7/23/2016			\$62,541,241				\$18,229,965				\$80,771,206		
48	7/30/2016			\$66,468,460				\$17,742,489				\$84,210,949		
49	8/6/2016			\$62,412,598				\$17,331,374				\$79,743,972		
50	8/13/2016			\$62,089,389				\$17,501,599				\$79,590,988		
51	8/20/2016			\$62,437,148				\$17,779,458				\$80,216,606		
52	8/27/2016			\$61,403,206				\$18,529,560				\$79,932,766		
	8/31/2016 **			\$17,309,621				\$3,279,958				\$20,589,579		
Total thru Current Week			\$564,647,122	\$546,410,016	\$18,237,106	3.3%	\$179,672,983	\$179,167,905	\$505,078	0.3%	\$744,320,105	\$725,577,921	\$18,742,184	2.6%
Fiscal Year Total			\$564,647,122	\$3,481,361,812			\$179,672,983	\$1,048,338,613			\$744,320,105	\$4,529,700,425		

\* FY 16 includes 5 days; FY 15 includes 6 days

\*\* FY 16 includes 4 days; FY 15 includes 2 days

### Texas Lottery Commission Fiscal Year Over Year Change in Sales



Note: Week 1 is not a full week of sales as this report is prepared on a Fiscal Year basis.

Texas Lottery Commission  
Scratch Tickets by Price Point  
Sales, Prize Expense, Sales Contribution and Payout Percentage With Year Over Year Changes  
Unaudited

Fiscal Year	Price Point	# of Active Games	FY Sales	% of Scratch Ticket Sales	Year over Year Change in Sales	FY Prize Expense	Year over Year Change in Prize Expense	FY Sales Contribution	Year over Year Change in Contribution	Average Prize Payout %	Year over Year Change in Payout %
2015	\$1.00	16	27,620,589	5.1%		16,544,375		11,076,214		59.9%	0.0%
Through	\$2.00	23	57,479,872	10.5%		37,288,043		20,191,829		64.9%	0.1%
11/1/2014	\$3.00	10	54,858,270	10.0%		36,157,873		18,700,397		65.9%	0.4%
	\$5.00	32	176,466,755	32.3%		119,862,445		56,604,310		67.9%	0.0%
	\$10.00	13	112,456,500	20.6%		79,458,780		32,997,720		70.7%	0.5%
	\$20.00	8	92,004,680	16.8%		68,949,456		23,055,224		74.9%	0.1%
	\$50.00	3	25,523,350	4.7%		19,833,560		5,689,790		77.7%	0.0%
<b>Total</b>		<b>105</b>	<b>\$546,410,016</b>			<b>\$378,094,532</b>		<b>\$168,315,484</b>		<b>69.2%</b>	<b>0.4%</b>
2016	\$1.00	13	25,167,699	4.5%		15,301,852		9,865,847		60.8%	0.5%
thru	\$2.00	21	55,092,304	9.8%		35,874,344		19,217,960		65.1%	-0.6%
10/31/2015	\$3.00	9	50,447,529	8.9%		33,191,316		17,256,213		65.8%	-0.2%
	\$5.00	37	179,239,080	31.7%		121,772,040		57,467,040		67.9%	0.0%
	\$10.00	14	115,200,470	20.4%		80,728,413		34,472,057		70.1%	-0.3%
	\$20.00	9	111,255,340	19.7%		83,377,324		27,878,016		74.9%	0.0%
	\$50.00	3	28,244,700	5.0%		21,966,446		6,278,254		77.8%	0.0%
<b>Total</b>		<b>106</b>	<b>\$564,647,122</b>			<b>\$392,211,735</b>		<b>\$172,435,387</b>		<b>69.5%</b>	<b>0.0%</b>
Variance	\$1.00	-3	-2,452,890		-8.9%	-1,242,523	-7.5%	-1,210,367	-10.9%	0.90%	
2015 to	\$2.00	-2	-2,387,568		-4.2%	-1,413,699	-3.8%	-973,869	-4.8%	0.25%	
2014	\$3.00	-1	-4,410,741		-8.0%	-2,966,557	-8.2%	-1,444,184	-7.7%	-0.12%	
	\$5.00	5	2,772,325		1.6%	1,909,595	1.6%	862,730	1.5%	0.01%	
	\$10.00	1	2,743,970		2.4%	1,269,632	1.6%	1,474,338	4.5%	-0.58%	
	\$20.00	1	19,250,660		20.9%	14,427,869	20.9%	4,822,791	20.9%	0.00%	
	\$50.00	0	2,721,350		10.7%	2,132,886	10.8%	588,464	10.3%	0.06%	
<b>Total</b>		<b>1</b>	<b>\$18,237,106</b>		<b>3.3%</b>	<b>\$14,117,203</b>	<b>3.7%</b>	<b>\$4,119,903</b>	<b>2.4%</b>	<b>0.27%</b>	

Notes - Scratch Ticket Variances

Texas Lottery Commission  
Scratch Tickets by Price Point  
Sales, Prize Expense, Sales Contribution and Payout Percentage With Year Over Year Changes  
Unaudited

		FY 2016		FY 2015		Difference
Sales	\$1 - \$5	\$309,946,612		\$316,425,486		-\$6,478,874
Prize Exp.	\$1 - \$5	\$206,139,552		\$209,852,736		-\$3,713,184
Sales Cont.	\$1 - \$5	\$103,807,060		\$106,572,750		-\$2,765,690
Prize Exp. %	\$1 - \$5	66.5%		66.3%		0.2%
		FY 2016		FY 2015		Difference
Sales	\$10 - \$50	\$254,700,510		\$229,984,530		\$24,715,980
Prize Exp.	\$10 - \$50	\$186,072,183		\$168,241,796		\$17,830,387
Sales Cont.	\$10 - \$50	\$68,628,327		\$61,742,734		\$6,885,593
Prize Exp. %	\$10 - \$50	73.1%		73.2%		-0.1%
		FY 2016		FY 2015		Difference
Sales	Scratch	\$564,647,122		\$546,410,016		\$18,237,106
Prize Exp.	Scratch	\$392,211,735		\$378,094,532		\$14,117,203
Sales Cont.	Scratch	\$172,435,387		\$168,315,484		\$4,119,903
Prize Exp. %	Scratch	69.5%		69.2%		0.3%

		FY 2016		FY 2015		Difference
Sales	\$1 - \$10	\$425,147,082		\$428,881,986		-\$3,734,904
Prize Exp.	\$1 - \$10	\$286,867,965		\$289,311,516		-\$2,443,552
Sales Cont.	\$1 - \$10	\$138,279,117		\$139,570,470		-\$1,291,352
Prize Exp. %	\$1 - \$10	67.5%		67.5%		0.0%
		FY 2016		FY 2015		Difference
Sales	\$20 - \$50	\$139,500,040		\$117,528,030		\$21,972,010
Prize Exp.	\$20 - \$50	\$105,343,770		\$88,783,016		\$16,560,755
Sales Cont.	\$20 - \$50	\$34,156,270		\$28,745,014		\$5,411,255
Prize Exp. %	\$20 - \$50	75.5%		75.5%		0.0%
		FY 2016		FY 2015		Difference
Sales	Scratch	\$564,647,122		\$546,410,016		\$18,237,106
Prize Exp.	Scratch	\$392,211,735		\$378,094,532		\$14,117,203
Sales Cont.	Scratch	\$172,435,387		\$168,315,484		\$4,119,903
Prize Exp. %	Scratch	69.5%		69.2%		0.3%



Texas Lottery Commission  
**Weekly Sales Summary**  
**& Comparison to Previous Week**  
 Unaudited

	Week Ending 10/31/2015	% of Sales	Week Ending 10/24/2015	% of Sales	\$ change	% change
	<u>THIS WEEK</u>		<u>LAST WEEK</u>			
Total Sales	<u>\$85,593,524</u>		<u>\$82,537,901</u>		<u>\$3,055,623</u>	3.70%
Scratch Tickets	<u>\$66,025,374</u>	77.1%	<u>\$64,087,437</u>	77.6%	<u>\$1,937,937</u>	3.02%
Lotto	\$2,165,101	2.5%	\$2,099,176	2.5%	\$65,925	3.14%
Lotto Extra	\$368,559	0.4%	\$358,217	0.4%	\$10,342	2.89%
Pick 3	\$4,653,961	5.4%	\$4,515,381	5.5%	\$138,581	3.07%
Pick 3 Sum It Up	\$91,360	0.1%	\$92,071	0.1%	-\$711	-0.77%
Cash Five	\$873,751	1.0%	\$860,960	1.0%	\$12,791	1.49%
Texas Two Step	\$944,275	1.1%	\$991,931	1.2%	-\$47,656	-4.80%
Mega Millions	\$2,945,749	3.4%	\$2,600,946	3.2%	\$344,803	13.26%
Megaplier	\$695,705	0.8%	\$626,019	0.8%	\$69,686	11.13%
Daily 4	\$1,621,009	1.9%	\$1,553,788	1.9%	\$67,221	4.33%
Daily 4 Sum It Up	\$85,560	0.1%	\$80,225	0.1%	\$5,335	6.65%
Powerball	\$3,327,954	3.9%	\$2,946,077	3.6%	\$381,877	12.96%
Power Play	\$455,266	0.5%	\$411,192	0.5%	\$44,074	10.72%
All or Nothing	\$573,258	0.7%	\$562,378	0.7%	\$10,880	1.93%
Texas Triple Chance	\$766,642	0.9%	\$752,104	0.9%	\$14,538	1.93%
Total Draw Game Sales	<u>\$19,568,150</u>		<u>\$18,450,464</u>		<u>\$1,117,686</u>	6.06%

\* Totals may not sum due to rounding.

Texas Lottery Commission  
Weekly Sales Summary  
Unaudited

SCRATCH TICKETS  
TOP TEN SELLING GAMES

For the week ending: 10/31/15

Rank	Price Point	Game	Sales (Millions)
1	\$ 20	HOLIDAY GAME BOOK	\$ 3.385
2	\$ 10	HAPPY HOLIDAYS	\$ 3.175
3	\$ 5	HIGH ROLLER	\$ 3.121
4	\$ 20	100X THE CASH	\$ 3.056
5	\$ 10	CASHWORD MULTIPLIER	\$ 2.608
6	\$ 10	\$10 SET FOR LIFE	\$ 2.537
7	\$ 20	\$1,000,000 INSTANT CASHOUT	\$ 2.477
8	\$ 50	DIAMOND DOLLARS	\$ 2.442
9	\$ 5	777 SEVENS	\$ 2.350
10	\$ 5	\$5 SET FOR LIFE	\$ 2.341

Texas Lottery Commission  
Prize Payout Tracking Report  
Unaudited

Through the week ending: 10/31/15

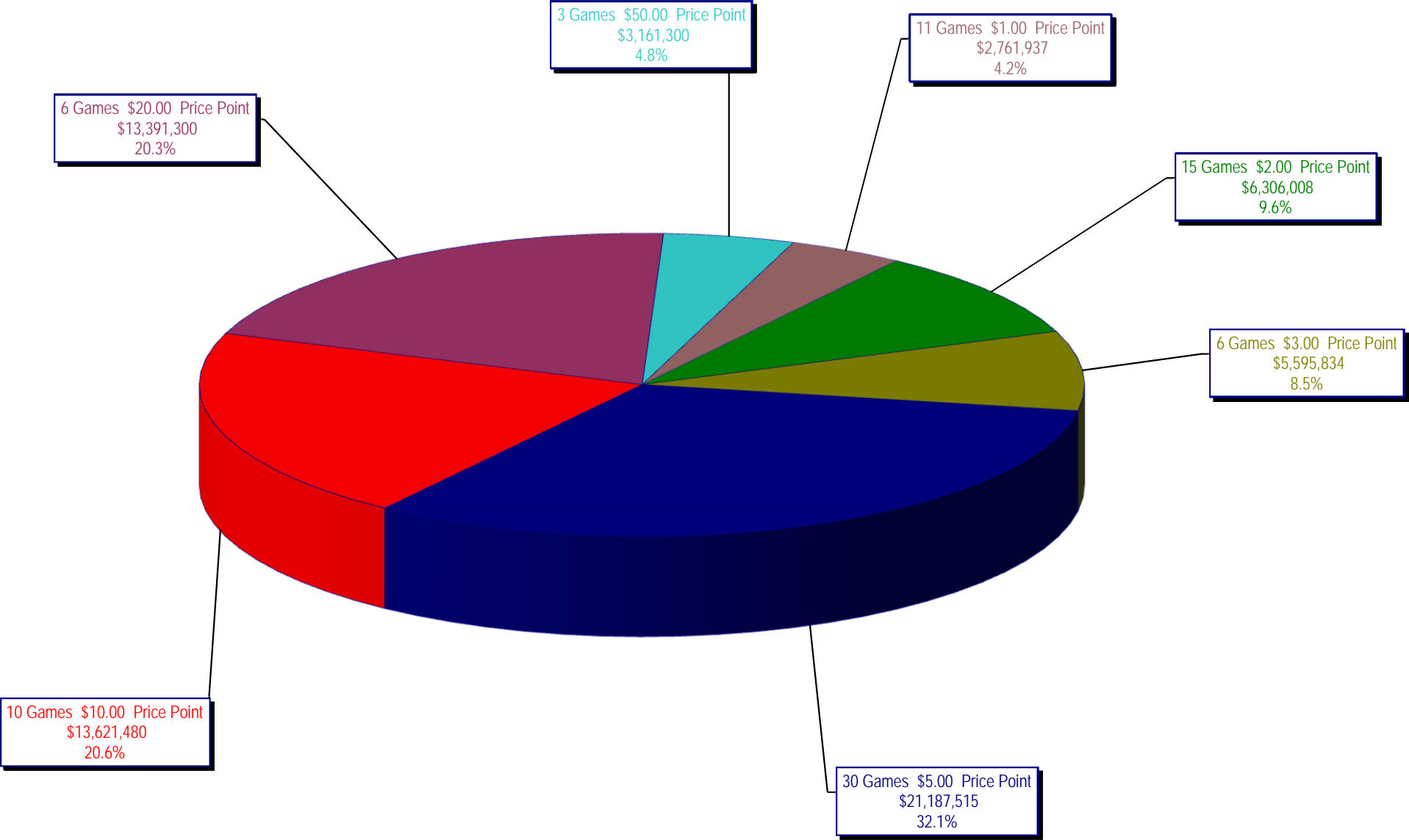
Draw Game Sales

		FY Sales Through Week Ending 10/31/2015		FY Prize Expense Through Week Ending 10/31/2015	Actual* Prize Payout	Base Payout (Prize Pool)
Lotto	\$	22,556,016	\$	17,188,884	76.21%	54.00%
Lotto Extra		3,778,379		1,925,536	50.96%	53.70%
Pick 3		42,319,041		21,668,520	51.20%	50.00%
Pick 3 Sum It Up		866,659		481,229	55.53%	50.00%
Cash Five		7,945,484		3,972,742	50.00%	50.00%
Texas Two Step		9,341,562		4,767,417	51.03%	50.00%
Mega Millions		20,234,711		10,450,102	51.64%	50.00%**
Megaplier		5,111,306		2,589,873	50.67%	N/A
Daily 4		14,393,905		6,491,400	45.10%	50.00%
Daily 4 Sum It Up		747,015		247,793	33.17%	50.00%
Powerball		38,342,385		19,392,579	50.58%	50.00%**
Power Play		4,878,182		2,467,960	50.59%	N/A
All or Nothing		5,416,428		2,782,244	51.37%	55.98%
Texas Triple Chance		3,741,910		2,351,437	62.84%	50.00%
<b>Totals</b>	\$	<b>179,672,983</b>	\$	<b>96,777,716</b>	<b>53.86%</b>	

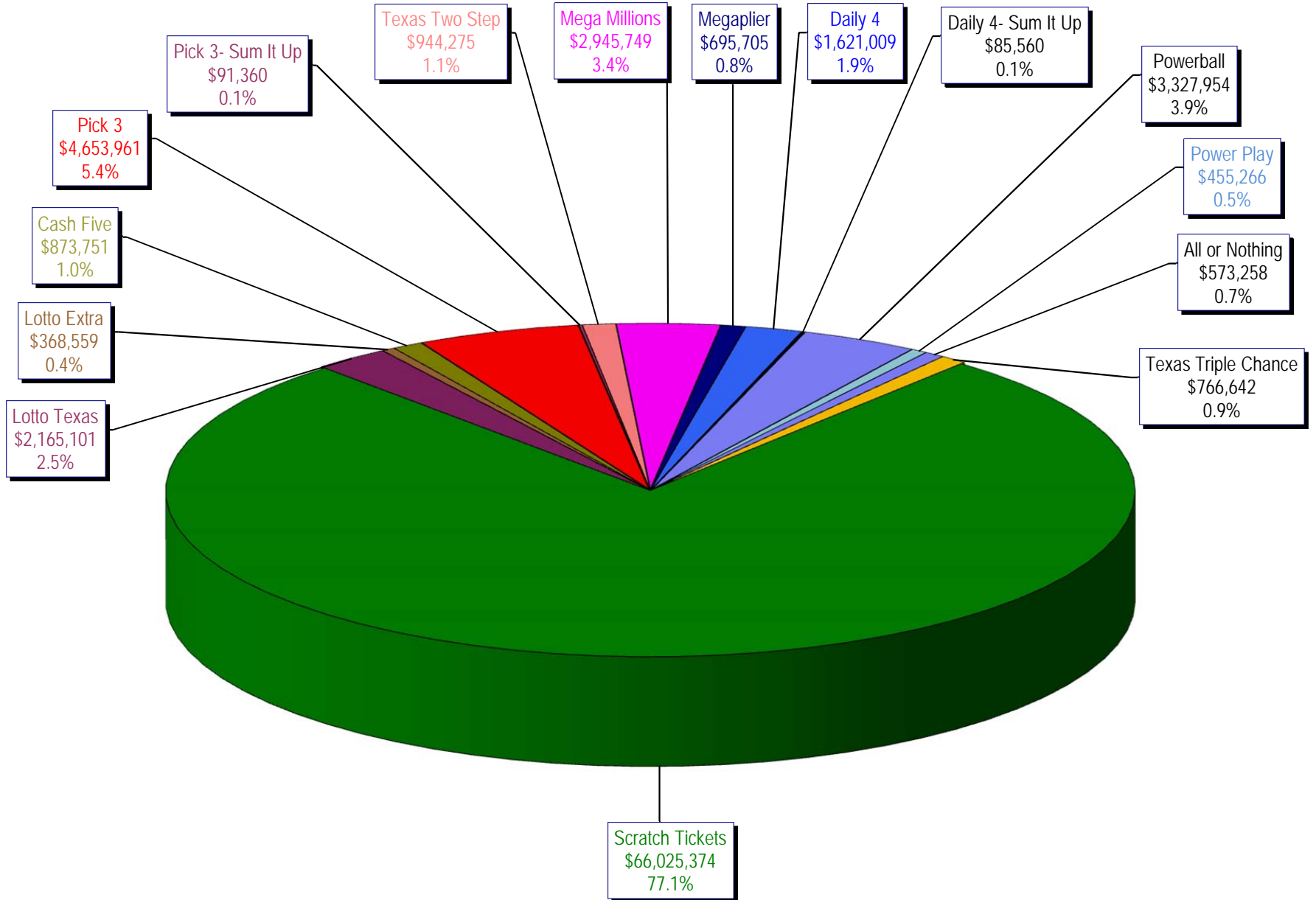
\* Before Unclaimed Prizes

\*\* Estimated; depends on # of guaranteed prizes won in Texas

Texas Lottery Commission  
Scratch Ticket Sales  
For the week ending 10/31/15  
(Unaudited)



**Texas Lottery Commission**  
**All Game Sales**  
**For the week ending 10/31/15**  
**(Unaudited)**



Texas Lottery Commission - Weekly Sales Summary for FY 2016 (Unaudited)

Week Ended	Scratch Tickets	New Games & Dates	Lotto Texas	Jackpot W	S	Lotto Extra	Pick 3	Pick 3 Sum It Up	Cash Five	Texas Two Step	Jackpot M	TH	Mega Millions	Jackpot T	F	Megaplier	Daily 4	Daily 4 Sum It Up	Powerball	Jackpot W	S	Power Play	All or Nothing	Monopoly	Jackpot F	Texas Triple Chance	Total	Per Cap.
9/5/2015*	66,843,870	0	2,788,509	25	26	466,121	5,249,348	117,979	956,126	1,253,100	425	575	2,366,640	74	85	608,901	1,725,027	93,067	3,586,482	120	133	484,769	675,614	0			87,215,551	3.24
9/12/2015	61,566,291	1717 (\$1.N); 1718 (\$5.N); 1748 (\$10.N); 1696 (\$3.N) - 9/08/15	2,793,426	26.5	27.75	465,451	4,974,238	103,203	919,536	1,423,604	725	950	2,511,039	95	106	629,091	1,641,226	86,539	3,927,126	149	167	518,060	638,384	0			82,197,213	3.05
9/19/2015	63,530,657	0	2,845,557	28.25	29.5	475,307	4,715,566	95,242	928,275	854,109	200	225	1,817,155	15	20	487,946	1,647,829	81,483	5,082,782	185	208	639,614	656,388	0			83,857,910	3.11
9/26/2015	61,731,400	1720 (\$2.N); 1721 (\$5.N); 1715 (\$5.N) - 9/21/15	2,815,638	30	30.75	468,584	4,735,629	97,118	924,334	1,048,752	300	450	1,860,438	25	31	499,201	1,628,350	82,200	6,648,092	235	267	790,427	653,528	0			83,983,690	3.12
10/3/2015	67,048,415	0	3,034,763	31.5	32.25	502,043	4,925,789	100,522	919,217	1,347,552	600	725	2,053,673	39	47	539,290	1,662,320	88,291	8,036,576	301	40	884,785	616,594	0		725,376	92,485,206	3.43
10/10/2015	66,049,706	1722 (\$1.N); 1723 (\$5.N); 1711 (\$20.N) - 10/05/15	2,175,801	5	5.25	366,506	4,803,855	97,005	899,614	1,141,865	925	200	2,113,720	55	65	535,411	1,636,542	86,150	2,572,748	50	60	372,480	593,616	0		743,664	84,188,683	3.12
10/17/2015	65,073,593	0	2,133,286	5	5	358,076	4,629,752	92,453	876,040	824,622	200	225	2,286,703	75	84	568,477	1,576,323	79,576	2,638,956	70	80	377,157	580,870	0		754,124	82,850,007	3.07
10/24/2015	64,087,437	1724 (\$2.N); 1768 (\$5.N); 1726 (\$10.N) - 10/19/15	2,099,176	5.25	5.5	358,217	4,515,381	92,071	860,960	991,931	300	425	2,600,946	93	105	626,019	1,553,788	80,225	2,946,077	90	100	411,192	562,378	0		752,104	82,537,901	3.06
10/31/2015	66,025,374	0	2,165,101	5.75	6	368,559	4,653,961	91,360	873,751	944,275	550	200	2,945,749	117	129	695,705	1,621,009	85,560	3,327,954	110	127	455,266	573,258	0		766,642	85,593,524	3.18
weekly change	3.0%		3.1%			2.9%	3.1%	-0.8%	1.5%	-4.8%			13.3%			11.1%	4.3%	6.7%	13.0%			10.7%	1.9%	0.0%		1.9%	3.7%	
	<b>SALES</b>		<b>SALES</b>			<b>SALES</b>	<b>SALES</b>	<b>SALES</b>	<b>SALES</b>	<b>SALES</b>			<b>SALES</b>	<b>SALES</b>	<b>SALES</b>	<b>SALES</b>	<b>SALES</b>	<b>SALES</b>	<b>SALES</b>	<b>SALES</b>	<b>SALES</b>	<b>SALES</b>	<b>SALES</b>	<b>SALES</b>	<b>SALES</b>	<b>SALES</b>	<b>SALES</b>	<b>% of Sales</b>
Calendar Year to date	2,932,686,859		105,211,635			17,241,244	210,499,714	4,473,914	41,556,817	46,263,094			114,945,945			28,166,724	72,795,536	4,024,088	183,017,194			23,218,520	30,131,706	(390)		3,741,910	3,817,974,510	100.0%
Fiscal Year to date 2016	564,647,122		22,556,016			3,778,379	42,319,041	866,659	7,945,484	9,341,562			20,234,711			5,111,306	14,393,905	747,015	38,342,385			4,878,182	5,416,428	0		3,741,910	744,320,105	100.0%
*Full week includes 2 days from FY15																												