



*WEEKLY SALES SUMMARY*

Unaudited

**Week Ending: 11/01/08**

Texas Lottery Commission  
Fiscal Year to Date Sales Comparison  
Unaudited

Through the week ending 11/01/2008 (9 weeks)

Sales by Game	FY 2007 *	FY 2008 **	FY 2009	\$ Change		% Change	
				FY 2009 to FY 2007	FY 2009 to FY 2008	FY 2009 to FY 2007	FY 2009 to FY 2008
Instants	\$ 472,528,154	\$ 473,966,523	\$ 431,299,754	\$ -41,228,400	\$ -42,666,769	-8.7%	-9.0%
Lotto Texas	36,089,590	37,678,902	30,495,645	-5,593,945	-7,183,257	-15.5%	-19.1%
Pick 3	53,361,079	50,168,484	45,039,883	-8,321,196	-5,128,601	-15.6%	-10.2%
Pick 3 Sum It Up	-	-	976,291	976,291	976,291	-	-
Cash 5	15,424,262	13,890,798	11,836,728	-3,587,534	-2,054,070	-23.3%	-14.8%
Texas Two Step	11,282,687	7,841,905	8,022,264	-3,260,423	180,359	-28.9%	2.3%
Mega Millions	26,471,303	23,366,539	21,255,805	-5,215,498	-2,110,734	-19.7%	-9.0%
Megaplier	6,413,163	6,073,313	5,636,142	-777,021	-437,171	-12.1%	-7.2%
Daily 4	-	6,241,305	6,708,397	6,708,397	467,092	-	-
Daily 4 Sum It Up	-	1,894,942	908,915	908,915	-986,027	-	-
<b>Total</b>	<b>\$ 621,570,238</b>	<b>\$ 621,122,710</b>	<b>\$ 562,179,824</b>	<b>\$ -59,390,415</b>	<b>\$ -58,942,887</b>	<b>-9.6%</b>	<b>-9.5%</b>

\* 3 extra days in 2007 \*\* 2 extra days in 2008

Texas Lottery Commission  
Fiscal Year Over Year Change in Sales  
Unaudited  
FY 2009 Compared to FY 2008

Week	FY 2009 Week Ending	INSTANT TICKETS				ON-LINE GAMES				TOTAL SALES			
		FY 2009	FY 2008	Difference	% change - Cumulative Sales	FY 2009	FY 2008	Difference	% change - Cumulative Sales	FY 2009	FY 2008	Difference	% change - Cumulative Sales
1	9/6/2008**	\$44,890,104	\$62,376,229	(\$17,486,125)	-28.0%	\$14,722,011	\$19,372,224	(\$4,650,213)	-24.0%	\$59,612,115	\$81,748,453	(\$22,136,338)	-27.1%
2	9/13/2008	\$46,309,551	\$52,458,866	(\$6,149,315)	-20.6%	\$13,704,860	\$16,926,163	(\$3,221,303)	-21.7%	\$60,014,411	\$69,385,029	(\$9,370,618)	-20.8%
3	9/20/2008	\$42,923,171	\$49,998,934	(\$7,075,763)	-18.6%	\$12,291,263	\$15,792,283	(\$3,501,020)	-21.8%	\$55,214,434	\$65,791,217	(\$10,576,783)	-19.4%
4	9/27/2008	\$47,042,801	\$49,894,175	(\$2,851,374)	-15.6%	\$14,222,339	\$14,800,514	(\$578,175)	-17.9%	\$61,265,140	\$64,694,689	(\$3,429,549)	-16.2%
5	10/4/2008	\$50,747,162	\$53,486,863	(\$2,739,701)	-13.5%	\$15,784,472	\$16,618,430	(\$833,958)	-15.3%	\$66,531,634	\$70,105,293	(\$3,573,659)	-14.0%
6	10/11/2008	\$49,763,789	\$50,918,020	(\$1,154,231)	-11.7%	\$15,622,498	\$15,601,410	\$21,088	-12.9%	\$65,386,287	\$66,519,430	(\$1,133,143)	-12.0%
7	10/18/2008	\$49,299,053	\$50,532,253	(\$1,233,200)	-10.5%	\$15,167,940	\$15,682,666	(\$514,726)	-11.6%	\$64,466,993	\$66,214,919	(\$1,747,926)	-10.7%
8	10/25/2008	\$49,977,581	\$50,347,450	(\$369,869)	-9.3%	\$14,525,843	\$15,586,516	(\$1,060,673)	-11.0%	\$64,503,424	\$65,933,966	(\$1,430,542)	-9.7%
9	11/1/2008	\$50,346,542	\$53,953,733	(\$3,607,191)	-9.0%	\$14,838,845	\$16,775,983	(\$1,937,139)	-11.1%	\$65,185,387	\$70,729,716	(\$5,544,330)	-9.5%
10	11/8/2008		\$53,635,090				\$15,912,791				\$69,547,881		
11	11/15/2008		\$51,254,401				\$15,797,076				\$67,051,477		
12	11/22/2008		\$50,897,817				\$15,801,720				\$66,699,537		
13	11/29/2008		\$53,913,115				\$17,055,505				\$70,968,620		
14	12/6/2008		\$55,702,697				\$17,900,717				\$73,603,414		
15	12/13/2008		\$53,703,516				\$17,820,841				\$71,524,357		
16	12/20/2008		\$57,592,769				\$17,436,233				\$75,029,002		
17	12/27/2008		\$57,696,003				\$14,743,680				\$72,439,683		
18	1/3/2009		\$57,935,952				\$15,704,450				\$73,640,402		
19	1/10/2009		\$55,360,542				\$15,691,540				\$71,052,082		
20	1/17/2009		\$54,920,166				\$16,259,669				\$71,179,835		
21	1/24/2009		\$54,439,890				\$16,691,724				\$71,131,614		
22	1/31/2009		\$57,464,382				\$17,968,227				\$75,432,609		
23	2/7/2009		\$60,715,019				\$20,097,338				\$80,812,357		
24	2/14/2009		\$57,093,143				\$22,179,908				\$79,273,051		
25	2/21/2009		\$57,627,047				\$27,230,539				\$84,857,586		
26	2/28/2009		\$55,591,667				\$17,016,118				\$72,607,785		
27	3/7/2009		\$56,837,481				\$16,690,193				\$73,527,674		
28	3/14/2009		\$54,587,112				\$16,448,165				\$71,035,277		
29	3/21/2009		\$53,098,937				\$16,639,184				\$69,738,121		
30	3/28/2009		\$53,933,689				\$17,698,625				\$71,632,314		
31	4/4/2009		\$57,598,982				\$17,665,411				\$75,264,393		
32	4/11/2009		\$53,954,185				\$15,860,784				\$69,814,969		
33	4/18/2009		\$53,946,736				\$16,452,676				\$70,399,412		
34	4/25/2009		\$51,533,006				\$16,873,949				\$68,406,955		
35	5/2/2009		\$53,250,568				\$18,202,103				\$71,452,671		
36	5/9/2009		\$54,060,849				\$18,422,562				\$72,483,411		
37	5/16/2009		\$54,010,641				\$20,728,360				\$74,739,001		
38	5/23/2009		\$50,377,032				\$15,461,384				\$65,838,416		
39	5/30/2009		\$49,545,080				\$15,175,370				\$64,720,450		
40	6/6/2009		\$53,702,986				\$15,982,166				\$69,685,152		

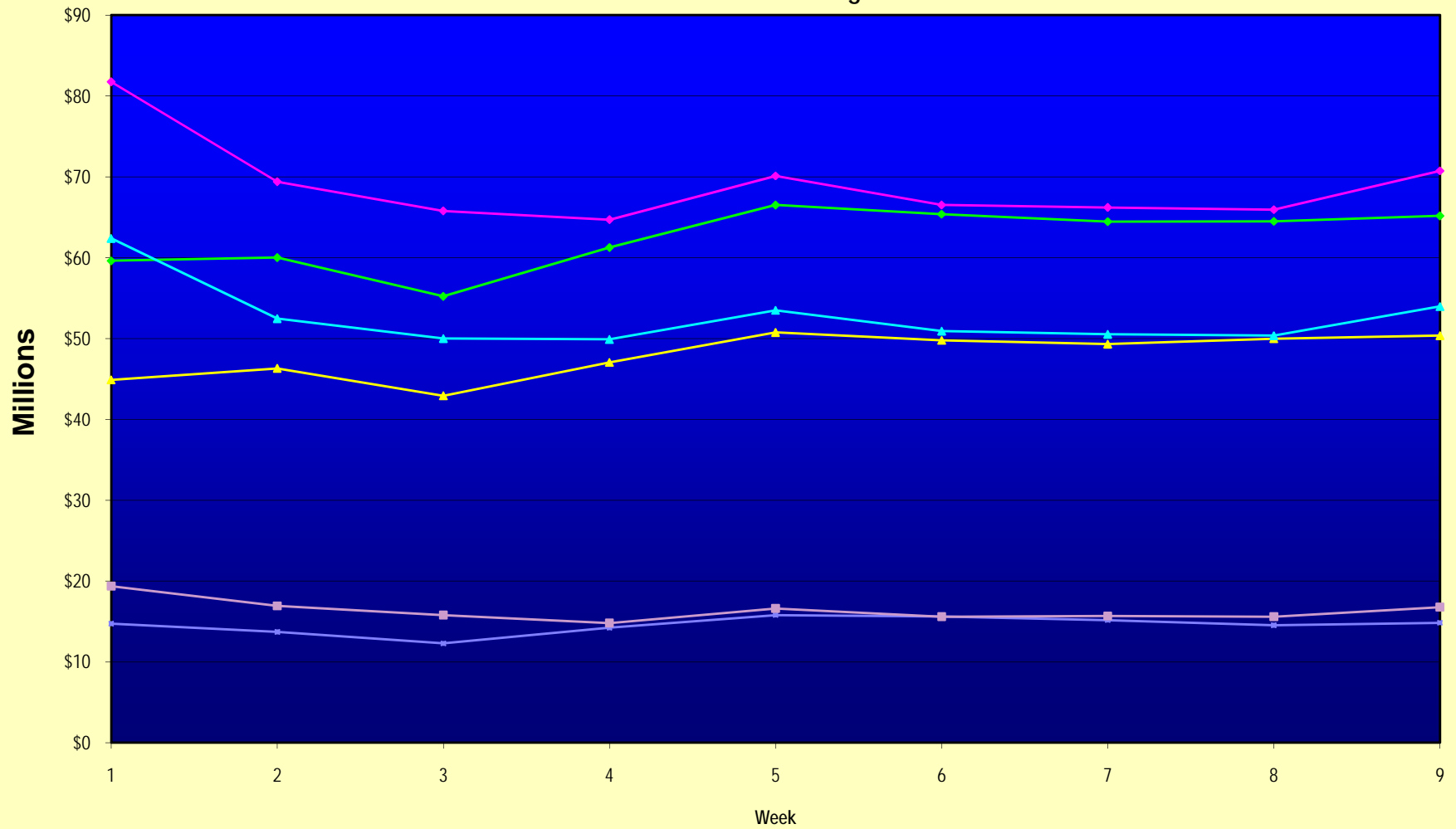
Note: Week 1 is not a full week of sales as this report is prepared on a Fiscal Year basis.

Texas Lottery Commission  
Fiscal Year Over Year Change in Sales  
Unaudited  
FY 2009 Compared to FY 2008

Week	FY 2009 Week Ending	INSTANT TICKETS				ON-LINE GAMES				TOTAL SALES			
		FY 2009	FY 2008	Difference	% change - Cumulative Sales	FY 2009	FY 2008	Difference	% change - Cumulative Sales	FY 2009	FY 2008	Difference	% change - Cumulative Sales
41	6/13/2009		\$51,171,483				\$16,589,087				\$67,760,570		
42	6/20/2009		\$50,650,362				\$15,728,484				\$66,378,846		
43	6/27/2009		\$49,258,266				\$15,250,905				\$64,509,171		
44	7/4/2009		\$53,393,355				\$16,270,619				\$69,663,974		
45	7/11/2009		\$53,127,756				\$16,914,922				\$70,042,678		
46	7/18/2009		\$51,593,146				\$17,752,738				\$69,345,884		
47	7/25/2009		\$49,902,181				\$16,706,145				\$66,608,326		
48	8/1/2009		\$49,605,420				\$16,254,383				\$65,859,803		
49	8/8/2009		\$50,961,907				\$16,770,496				\$67,732,403		
50	8/15/2009		\$49,452,511				\$16,749,487				\$66,201,998		
51	8/22/2009		\$49,249,518				\$17,286,302				\$66,535,820		
52	8/29/2009		\$49,468,928				\$18,109,997				\$67,578,925		
53	9/5/2009		\$6,054,239				\$493,109				\$6,547,348		
Total thru Current Week		\$431,299,754	\$473,966,523	(\$42,666,769)	-9.0%	\$130,880,070	\$147,156,187	(\$16,276,118)	-11.1%	\$562,179,824	\$621,122,710	(\$58,942,887)	-9.5%
Fiscal Year Total		\$431,299,754	\$2,783,836,095			\$130,880,070	\$887,641,858			\$562,179,824	\$3,671,477,953		

\*\* FY 2009 includes 6 days; FY 2008 includes 8 days

### Texas Lottery Commission Fiscal Year Over Year Change in Sales



◆ Total Sales 2009    
 ◆ Total Sales 2008    
 ▲ Instant Tickets 2009    
 ▲ Instant Tickets 2008    
 ■ On-Line Games 2009    
 ■ On-Line Games 2008

Note: Week 1 is not a full week of sales as this report is prepared on a Fiscal Year basis.

Texas Lottery Commission  
Instant Tickets by Price Point  
Sales, Prize Expense, Sales Contribution and Payout Percentage With Year Over Year Changes  
Unaudited

Fiscal Year	Price Point	# of Active Games	FY Sales	Year over Year Change in Sales	FY Prize Expense	Year over Year Change in Prize Expense	FY Sales Contribution	Year over Year Change in Contribution	Average Prize Payout %	Year over Year Change in Payout %
2008	\$1.00	35	\$43,017,535		\$25,867,817		\$17,149,718		60.1%	0.1%
thru	\$2.00	40	\$80,710,886		\$52,475,136		\$28,235,750		65.0%	0.3%
11/3/2007	\$3.00	10	\$38,444,046		\$25,331,707		\$13,112,339		65.9%	0.1%
	\$5.00	29	\$127,950,115		\$86,684,203		\$41,265,913		67.7%	-0.3%
	\$7.00	9	\$30,601,165		\$20,796,096		\$9,805,069		68.0%	0.0%
	\$10.00	14	\$70,627,256		\$49,438,107		\$21,189,149		70.0%	-0.7%
	\$20.00	6	\$24,511,580		\$17,634,376		\$6,877,204		71.9%	0.0%
	\$25.00	2	\$25,379,450		\$18,421,993		\$6,957,457		72.6%	0.2%
	\$30.00	2	\$6,849,090		\$4,950,569		\$1,898,521		72.3%	0.0%
	\$50.00	1	\$25,875,400		\$18,661,298		\$7,214,102		72.1%	0.0%
<b>Total</b>		<b>148</b>	<b>\$473,966,523</b>		<b>\$320,261,302</b>		<b>\$153,705,221</b>		<b>67.6%</b>	<b>0.1%</b>
2009	\$1.00	20	36,153,675		21,810,036		\$14,343,639		60.3%	0.4%
thru	\$2.00	20	77,134,466		50,022,996		\$27,111,470		64.9%	-0.7%
11/1/2008	\$3.00	10	48,523,455		31,874,639		\$16,648,816		65.7%	0.0%
	\$5.00	25	130,866,469		89,009,826		\$41,856,643		68.0%	0.1%
	\$7.00	5	13,175,064		8,964,802		\$4,210,262		68.0%	0.1%
	\$10.00	12	55,190,980		38,628,273		\$16,562,707		70.0%	0.0%
	\$20.00	7	43,876,860		31,490,130		\$12,386,730		71.8%	0.0%
	\$25.00	1	2,244,325		1,632,160		\$612,165		72.7%	0.2%
	\$30.00	2	4,222,710		3,061,020		\$1,161,690		72.5%	0.1%
	\$50.00	3	19,911,750		14,403,246		\$5,508,504		72.3%	0.2%
<b>Total</b>		<b>105</b>	<b>\$431,299,754</b>		<b>\$290,897,128</b>		<b>\$140,402,626</b>		<b>67.4%</b>	<b>-0.3%</b>
Variance	\$1.00	-15	-\$6,863,860	-16.0%	-\$4,057,781	-15.7%	-\$2,806,079	-16.4%	0.19%	
2009 to	\$2.00	-20	-\$3,576,420	-4.4%	-\$2,452,141	-4.7%	-\$1,124,279	-4.0%	-0.16%	
2008	\$3.00	0	\$10,079,409	26.2%	\$6,542,933	25.8%	\$3,536,476	27.0%	-0.20%	
	\$5.00	-4	\$2,916,354	2.3%	\$2,325,623	2.7%	\$590,731	1.4%	0.27%	
	\$7.00	-4	-\$17,426,101	-56.9%	-\$11,831,294	-56.9%	-\$5,594,807	-57.1%	0.09%	
	\$10.00	-2	-\$15,436,276	-21.9%	-\$10,809,834	-21.9%	-\$4,626,442	-21.8%	-0.01%	
	\$20.00	1	\$19,365,280	79.0%	\$13,855,754	78.6%	\$5,509,526	80.1%	-0.17%	
	\$25.00	-1	-\$23,135,125	-91.2%	-\$16,789,833	-91.1%	-\$6,345,292	-91.2%	0.14%	
	\$30.00	0	-\$2,626,380	-38.3%	-\$1,889,549	-38.2%	-\$736,831	-38.8%	0.21%	
	\$50.00	2	-\$5,963,650	n/a	-\$4,258,052	n/a	-\$1,705,598	n/a	0.22%	
<b>Total</b>		<b>-43</b>	<b>-\$42,666,765</b>	<b>-9.0%</b>	<b>-\$29,364,174</b>	<b>-9.2%</b>	<b>-\$13,302,595</b>	<b>-8.7%</b>	<b>-0.12%</b>	

Texas Lottery Commission  
**Instant Tickets by Price Point**  
 Sales, Prize Expense, Sales Contribution and Payout Percentage With Year Over Year Changes  
 Unaudited

Notes - Instant Ticket Variances

		FY 2009	FY 2008	Difference
Sales	\$1 - \$7	\$305,853,129	\$320,723,747	-\$14,870,618
Prize Exp.	\$1 - \$7	\$201,682,299	\$211,154,959	-\$9,472,660
Sales Cont.	\$1 - \$7	\$104,170,830	\$109,568,788	-\$5,397,958
Prize Exp. %	\$1 - \$7	65.9%	65.8%	0.1%
<b>Subtotal</b>				
		FY 2009	FY 2008	Difference
Sales	\$10 - \$50	\$125,446,625	\$153,242,776	-\$27,796,151
Prize Exp.	\$10 - \$50	\$89,214,829	\$109,106,343	-\$19,891,514
Sales Cont.	\$10 - \$50	\$36,231,796	\$44,136,433	-\$7,904,637
Prize Exp. %	\$10 - \$50	71.1%	71.2%	-0.1%
<b>Subtotal</b>				
		FY 2009	FY 2008	Difference
Sales	Instant	\$431,299,754	\$473,966,523	-\$42,666,769
Prize Exp.	Instant	\$290,897,128	\$320,261,302	-\$29,364,174
Sales Cont.	Instant	\$140,402,626	\$153,705,221	-\$13,302,595
Prize Exp. %	Instant	67.4%	67.6%	-0.1%

		FY 2009	FY 2008	Difference
Sales	\$1 - \$10	\$361,044,109	\$391,351,003	-\$30,306,894
Prize Exp.	\$1 - \$10	\$240,310,572	\$260,593,066	-\$20,282,494
Sales Cont.	\$1 - \$10	\$120,733,537	\$130,757,937	-\$10,024,400
Prize Exp. %	\$1 - \$10	66.6%	66.6%	0.0%
<b>Subtotal</b>				
		FY 2009	FY 2008	Difference
Sales	\$20 - \$50	\$70,255,645	\$82,615,520	-\$12,359,875
Prize Exp.	\$20 - \$50	\$50,586,556	\$59,668,236	-\$9,081,680
Sales Cont.	\$20 - \$50	\$19,669,089	\$22,947,284	-\$3,278,195
Prize Exp. %	\$20 - \$50	72.0%	72.2%	-0.2%
<b>Subtotal</b>				
		FY 2009	FY 2008	Difference
Sales	Instant	\$431,299,754	\$473,966,523	-\$42,666,769
Prize Exp.	Instant	\$290,897,128	\$320,261,302	-\$29,364,174
Sales Cont.	Instant	\$140,402,626	\$153,705,221	-\$13,302,595
Prize Exp. %	Instant	67.4%	67.6%	-0.1%

Texas Lottery Commission  
**Weekly Sales Summary**  
**& Comparison to Previous Week**  
 Unaudited

	Week Ending 11/01/08		Week Ending 10/25/08			
	<u>THIS WEEK</u>	% of Sales	<u>LAST WEEK</u>	% of Sales	<u>\$ change</u>	<u>% change</u>
Total Sales	<u>\$65,185,387</u>		<u>\$64,503,424</u>		<u>\$681,963</u>	1.06%
Instant Tickets	<u>\$50,346,542</u>	77.2%	<u>\$49,977,581</u>	77.5%	<u>\$368,961</u>	0.74%
Lotto Texas	\$3,325,641	5.1%	\$3,210,762	5.0%	\$114,879	3.58%
Pick 3	\$5,234,124	8.0%	\$5,099,671	7.9%	\$134,453	2.64%
Pick 3 Sum It Up	\$109,983	0.2%	\$107,105	0.2%	\$2,879	2.69%
Cash 5	\$1,339,046	2.1%	\$1,339,079	2.1%	-\$33	0.00%
Texas Two Step	\$946,035	1.5%	\$789,649	1.2%	\$156,386	19.80%
Mega Millions	\$2,347,596	3.6%	\$2,456,965	3.8%	-\$109,369	-4.45%
Megaplier	\$626,235	1.0%	\$641,206	1.0%	-\$14,971	-2.33%
Daily 4	\$805,572	1.2%	\$778,434	1.2%	\$27,138	3.49%
Daily 4 Sum It Up	\$104,613	0.2%	\$102,973	0.2%	\$1,640	1.59%
Total Online Sales	<u>\$14,838,845</u>		<u>\$14,525,843</u>		<u>\$313,002</u>	2.15%

\* Totals may not sum due to rounding.



Texas Lottery Commission  
Weekly Sales Summary  
Unaudited

INSTANT TICKETS  
TOP TEN SELLING GAMES

For the Week Ending : 11/01/08

Rank	Price Point	Game	Sales (Millions)
1	\$ 5	MERRY MONEY	\$ 3.898
2	\$ 10	JINGLE JUNGLE BUCKS	\$ 3.125
3	\$ 20	TEXAS \$50 MILLION CLUB	\$ 2.481
4	\$ 3	BONUS CASHWORD	\$ 2.436
5	\$ 10	SET FOR LIFE THE TEXAS RANGERS LIMITED EDITION	\$ 1.851
6	\$ 5	SILVER SERIES	\$ 1.820
7	\$ 5	JEWELS OF THE NILE	\$ 1.653
8	\$ 50	\$130,000,000 PLATINUM PAYOUT	\$ 1.608
9	\$ 20	\$1 MILLION DOUBLE ACTION	\$ 1.572
10	\$ 2	BREAK THE BANK	\$ 1.568

Texas Lottery Commission  
Prize Payout Tracking Report  
Unaudited

Through Week Ending 11/01/08

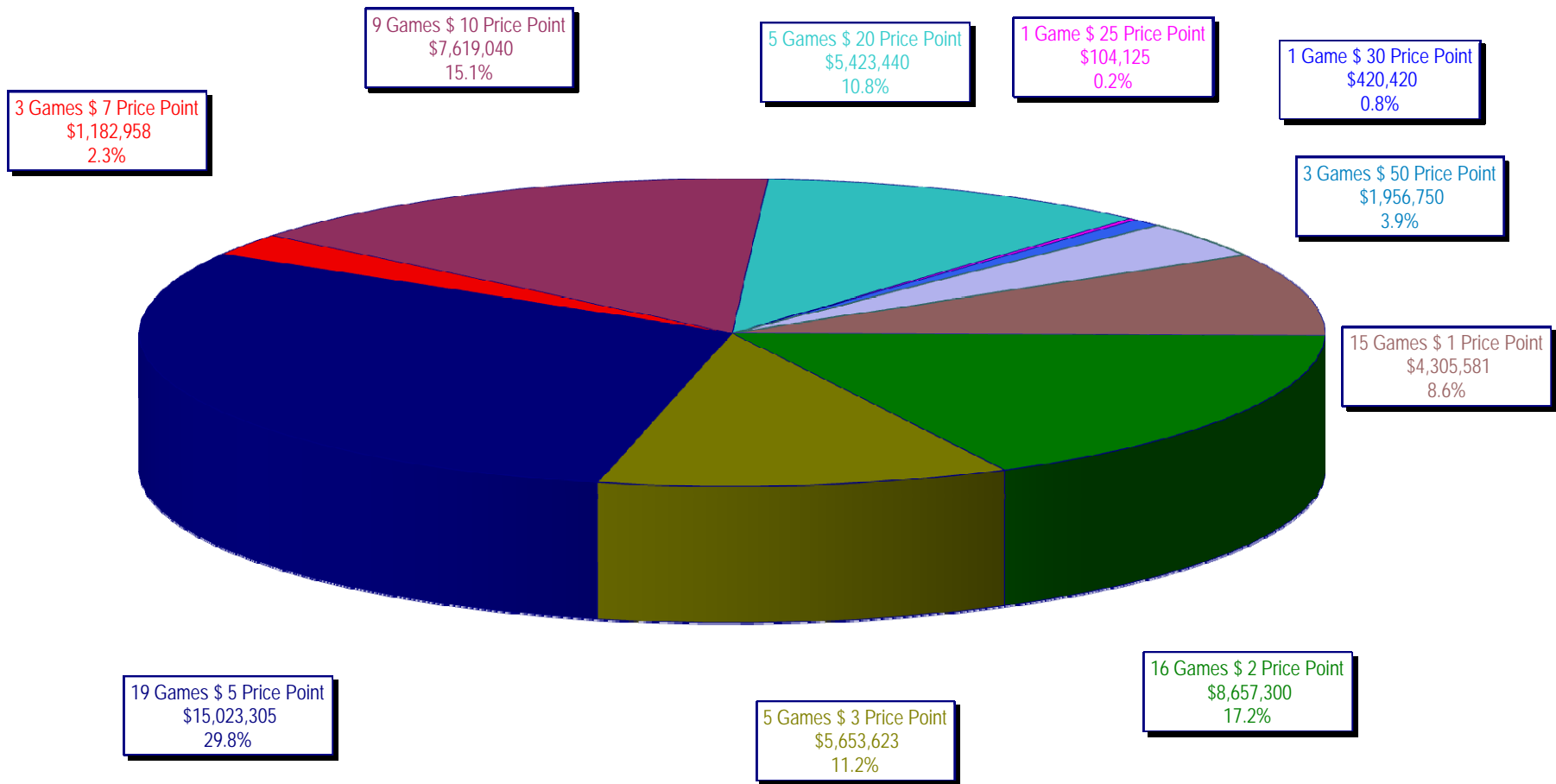
On-Line Sales

		FY Sales Through Week Ending 11/1/2008		FY Prize Expense Through Week Ending 11/1/2008	Actual* Prize Payout	Base Payout (Prize Pool)
Lotto	\$	30,495,645	\$	15,250,384	50.01%	50.00%
Pick 3		45,039,883		20,688,740	45.93%	50.00%
Pick 3 Sum It Up		976,291		429,742	44.02%	50.00%
Cash 5		11,836,728		6,002,898	50.71%	50.00%
Texas Two-Step		8,022,264		4,121,557	51.38%	50.00%
Mega Millions		21,255,805		10,153,517	47.77%	50.00%**
Megaplier		5,636,142		1,988,178	35.28%	N/A
Daily 4		6,708,397		2,675,850	39.89%	50.00%
Daily 4-Sum It Up		908,915		320,069	35.21%	50.00%
<b>Totals</b>	\$	<b>130,880,070</b>	\$	<b>61,630,934</b>	<b>47.09%</b>	

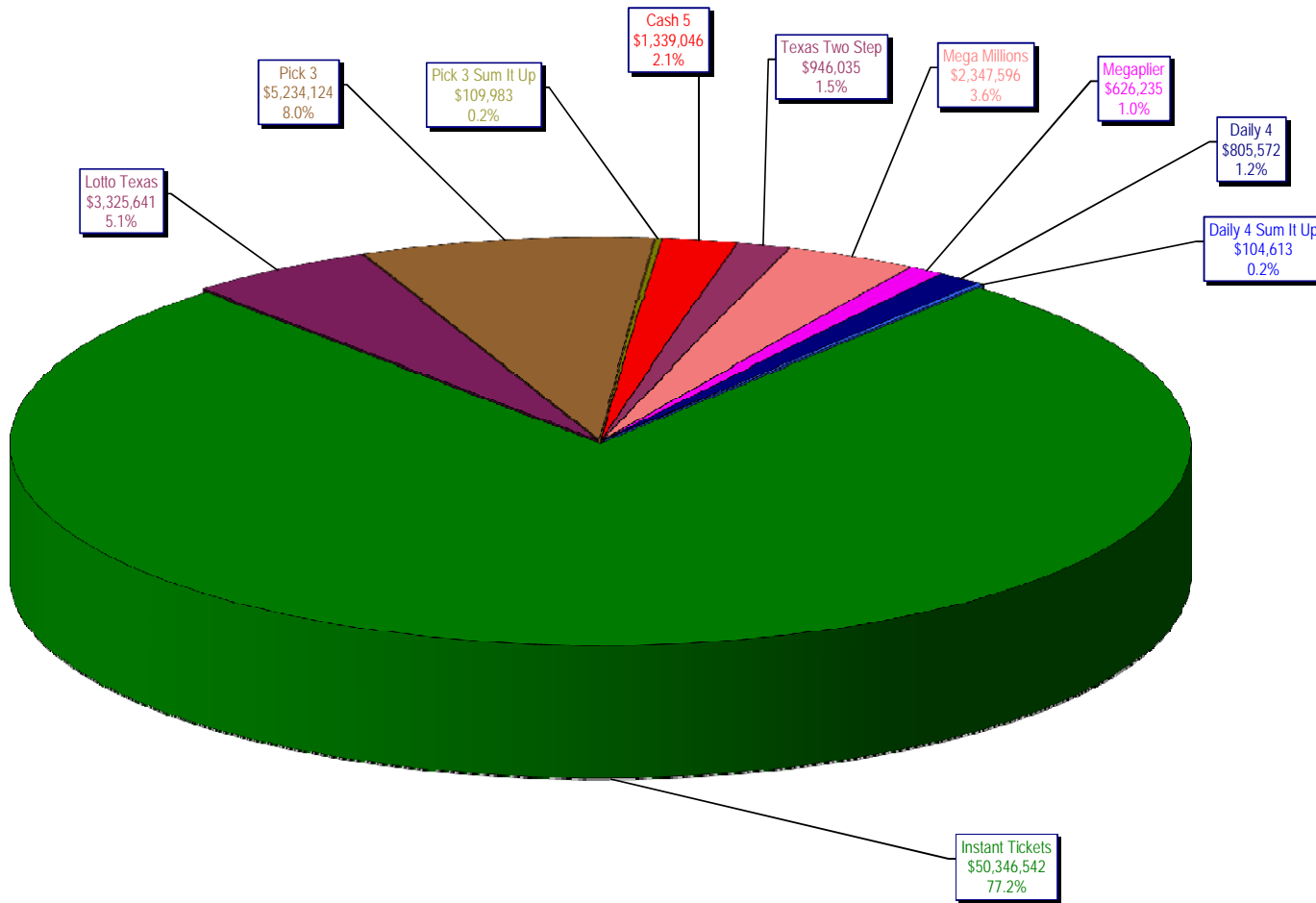
\* Before Unclaimed Prizes

\*\* Estimated; depends on # of guaranteed prizes won in Texas

Texas Lottery Commission  
Instant Ticket Sales  
For the Week Ending 11/01/2008  
(Unaudited)



Texas Lottery Commission  
**All Game Sales**  
For the Week Ending 11/01/2008  
(Unaudited)



\* Totals may not sum due to rounding.

