



WEEKLY SALES SUMMARY

Unaudited

[Week Ending: 11/01/2014](#)

Texas Lottery Commission
Fiscal Year to Date Sales Comparison
Unaudited

Through the Week Ending 11/01/2014 (9 Weeks)

Sales by Game	FY 2013 *	FY 2014 **	FY 2015	\$ Change		% Change	
				FY 2015 to FY 2013	FY 2015 to FY 2014	FY 2015 to FY 2013	FY 2015 to FY 2014
Instants	\$ 519,298,663	\$ 537,554,970	\$ 546,410,016	\$ 27,111,353	\$ 8,855,046	5.2%	1.6%
Lotto Texas	29,167,636	23,770,935	20,663,401	-8,504,235	-3,107,534	-29.2%	-13.1%
Lotto Extra	-	2,971,948	3,108,609	3,108,609	136,661	-	4.6%
Pick 3	45,882,707	43,434,421	42,366,863	-3,515,845	-1,067,558	-7.7%	-2.5%
Pick 3 Sum It Up	874,191	863,132	818,370	-55,822	-44,762	-6.4%	-5.2%
Cash Five	10,086,322	9,098,142	8,498,121	-1,588,201	-600,021	-15.7%	-6.6%
Texas Two Step	9,564,008	9,144,053	9,343,241	-220,767	199,188	-2.3%	2.2%
Mega Millions	19,656,368	23,326,022	29,145,373	9,489,005	5,819,351	48.3%	24.9%
Megaplier	4,511,967	5,145,898	6,536,028	2,024,061	1,390,130	44.9%	27.0%
Daily 4	12,130,713	14,117,379	14,026,646	1,895,933	-90,733	15.6%	-0.6%
Daily 4 Sum It Up	825,685	874,112	860,235	34,550	-13,877	4.2%	-1.6%
Powerball	28,498,181	47,669,117	31,989,443	3,491,262	-15,679,674	12.3%	-32.9%
Power Play	3,607,176	5,306,092	4,114,560	507,384	-1,191,532	14.1%	-22.5%
All or Nothing	17,788,773	8,467,814	6,854,246	-10,934,527	-1,613,568	-61.5%	-19.1%
Monopoly	-	-	842,770	842,770	842,770	-	-
Total	\$ 701,892,390	\$ 731,744,033	\$ 725,577,921	\$ 23,685,531	\$ -6,166,113	3.4%	-0.8%

* 2 extra days

** 1 extra day

Texas Lottery Commission
Fiscal Year to Date Cumulative Average Sales Comparison
Unaudited

Through the Week Ending 11/01/2014 (9 Weeks)

Sales by Game	FY 2013	FY 2014	FY 2015
Instant	\$ 8,114,042	\$ 8,532,619	\$ 8,813,065
Lotto Texas	455,744	377,316	333,281
Lotto Extra	-	47,174	50,139
Pick 3	716,917	689,435	683,336
Pick 3 Sum It Up	13,659	13,701	13,200
Cash Five	157,599	144,415	137,066
Texas Two Step	149,438	145,144	150,697
Mega Millions	307,131	370,254	470,087
Megaplier	70,499	81,681	105,420
Daily 4	189,542	224,085	226,236
Daily 4 Sum It Up	12,901	13,875	13,875
Powerball	445,284	756,653	515,959
Power Play	56,362	84,224	66,364
All or Nothing	* 317,657	134,410	110,552
Monopoly	-	- **	60,198
Total	\$ 11,006,776	\$ 11,614,985	\$ 11,749,474

thru 11/03/2012

64 days

*

56 days

thru 11/02/2013

63 days

**

thru 11/01/2014

62 days

14 days

Texas Lottery Commission
Fiscal Year Over Year Change in Sales
Unaudited
FY 2015 Compared to FY 2014

			INSTANT TICKETS				DRAW GAMES				TOTAL SALES			
Week	FY 2015		FY 2014	Difference	% change - Cumulative Sales	FY 2015	FY 2014	Difference	% change - Cumulative Sales	FY 2015	FY 2014	Difference	% change - Cumulative Sales	
	Week	Ending												
1	9/6/2014 *		\$54,911,801	\$58,587,757	(\$3,675,956)	-6.3%	\$17,482,488	\$22,369,499	(\$4,887,011)	-21.8%	\$72,394,289	\$80,957,256	(\$8,562,967)	-10.6%
2	9/13/2014		\$61,436,533	\$57,135,931	\$4,300,602	7.5%	\$19,097,081	\$25,412,980	(\$6,315,899)	-24.9%	\$80,533,614	\$82,548,911	(\$2,015,297)	-2.4%
3	9/20/2014		\$60,959,234	\$59,018,194	\$1,941,040	3.3%	\$20,567,894	\$29,161,241	(\$8,593,347)	-29.5%	\$81,527,128	\$88,179,435	(\$6,652,307)	-7.5%
4	9/27/2014		\$59,710,056	\$57,927,984	\$1,782,072	3.1%	\$19,920,828	\$20,012,313	(\$91,485)	-0.5%	\$79,630,884	\$77,940,297	\$1,690,588	2.2%
5	10/4/2014		\$62,119,854	\$62,146,816	(\$26,962)	0.0%	\$18,531,421	\$20,043,557	(\$1,512,136)	-7.5%	\$80,651,275	\$82,190,373	(\$1,539,098)	-1.9%
6	10/11/2014		\$61,253,665	\$60,867,582	\$386,083	0.6%	\$18,985,332	\$19,480,962	(\$495,631)	-2.5%	\$80,238,997	\$80,348,544	(\$109,548)	-0.1%
7	10/18/2014		\$60,230,048	\$60,612,193	(\$382,145)	-0.6%	\$19,538,402	\$20,079,610	(\$541,209)	-2.7%	\$79,768,450	\$80,691,803	(\$923,354)	-1.1%
8	10/25/2014		\$62,384,112	\$59,548,277	\$2,835,835	4.8%	\$21,475,643	\$19,319,928	\$2,155,715	11.2%	\$83,859,755	\$78,868,205	\$4,991,550	6.3%
9	11/1/2014		\$63,404,713	\$61,710,236	\$1,694,477	2.7%	\$23,568,817	\$18,308,976	\$5,259,842	28.7%	\$86,973,530	\$80,019,212	\$6,954,319	8.7%
10	11/8/2014			\$61,668,594				\$19,555,070				\$81,223,664		
11	11/15/2014			\$60,057,025				\$20,930,071				\$80,987,096		
12	11/22/2014			\$63,118,266				\$19,086,770				\$82,205,036		
13	11/29/2014			\$57,145,294				\$20,434,618				\$77,579,912		
14	12/6/2014			\$59,883,783				\$22,791,842				\$82,675,625		
15	12/13/2014			\$60,310,298				\$35,859,153				\$96,169,451		
16	12/20/2014			\$65,088,999				\$46,832,745				\$111,921,744		
17	12/27/2014			\$67,721,619				\$18,218,091				\$85,939,710		
18	1/3/2015			\$67,162,991				\$19,140,745				\$86,303,736		
19	1/10/2015			\$65,049,914				\$17,954,333				\$83,004,247		
20	1/17/2015			\$62,731,830				\$18,900,213				\$81,632,043		
21	1/24/2015			\$59,085,886				\$19,558,830				\$78,644,716		
22	1/31/2015			\$64,099,096				\$20,764,006				\$84,863,102		
23	2/7/2015			\$67,717,353				\$22,433,672				\$90,151,025		
24	2/14/2015			\$69,949,998				\$25,572,367				\$95,522,365		
25	2/21/2015			\$72,422,148				\$31,832,665				\$104,254,813		
26	2/28/2015			\$72,883,830				\$21,827,140				\$94,710,970		
27	3/7/2015			\$73,726,744				\$22,528,352				\$96,255,096		
28	3/14/2015			\$71,026,808				\$25,171,358				\$96,198,166		
29	3/21/2015			\$69,174,125				\$25,837,564				\$95,011,689		
30	3/28/2015			\$66,886,917				\$18,604,870				\$85,491,787		
31	4/4/2015			\$71,218,020				\$19,883,667				\$91,101,687		
32	4/11/2015			\$65,970,648				\$18,875,485				\$84,846,133		
33	4/18/2015			\$64,922,280				\$19,723,048				\$84,645,328		
34	4/25/2015			\$60,578,829				\$18,978,148				\$79,556,977		
35	5/2/2015			\$64,244,545				\$19,029,632				\$83,274,177		
36	5/9/2015			\$65,679,029				\$19,350,478				\$85,029,507		
37	5/16/2015			\$63,627,971				\$19,865,609				\$83,493,580		
38	5/23/2015			\$61,902,451				\$19,892,846				\$81,795,297		
39	5/30/2015			\$61,264,953				\$20,014,636				\$81,279,589		
40	6/6/2015			\$64,019,948				\$21,782,886				\$85,802,834		
41	6/13/2015			\$59,742,598				\$19,736,748				\$79,479,346		
42	6/20/2015			\$59,010,863				\$17,095,336				\$76,106,199		

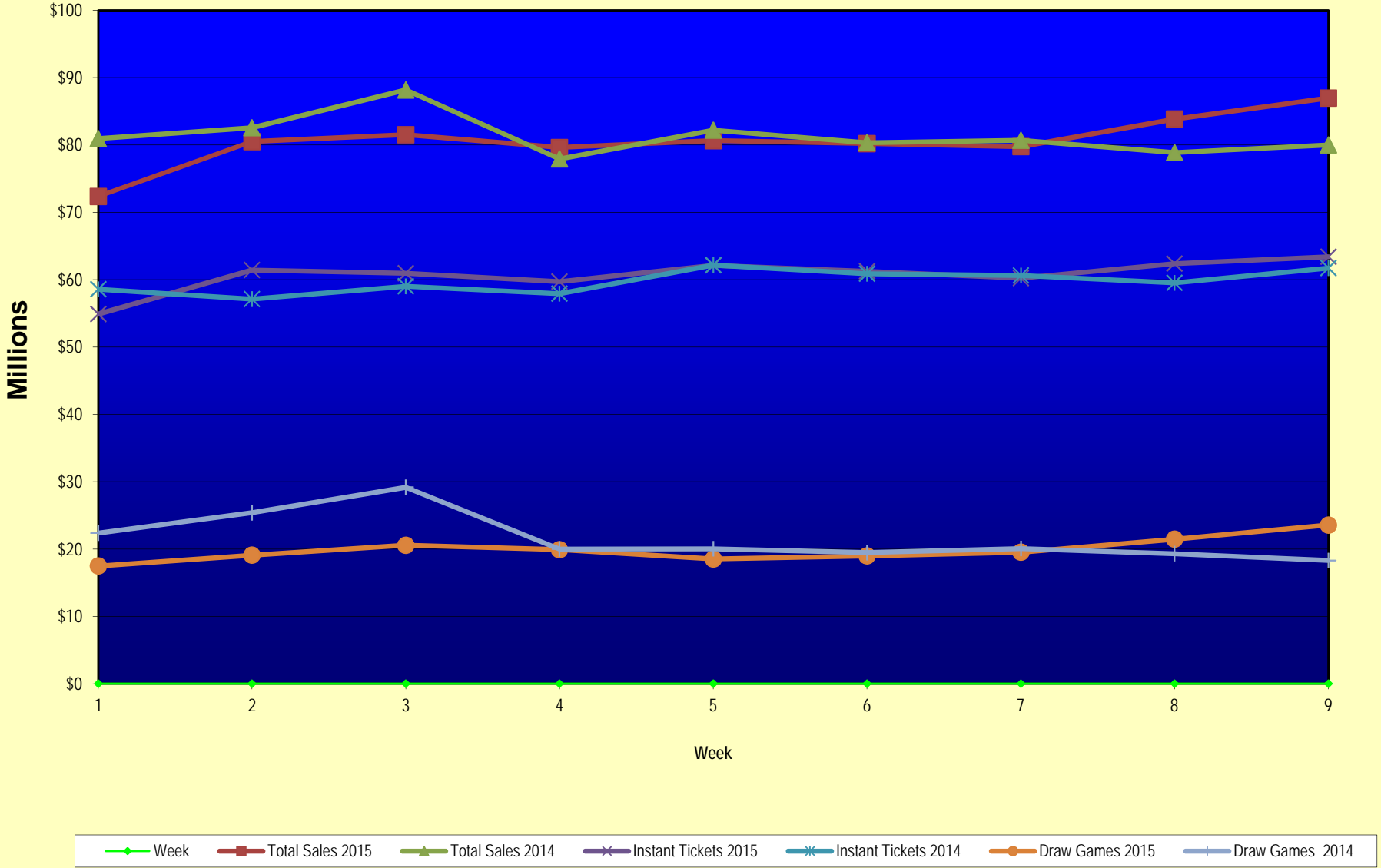
Texas Lottery Commission
Fiscal Year Over Year Change in Sales
Unaudited
FY 2015 Compared to FY 2014

			INSTANT TICKETS				DRAW GAMES				TOTAL SALES			
FY 2015			FY 2015	FY 2014	Difference	% change - Cumulative Sales	FY 2015	FY 2014	Difference	% change - Cumulative Sales	FY 2015	FY 2014	Difference	% change - Cumulative Sales
Week	Week Ending													
43	6/27/2015			\$58,102,191				\$17,635,736				\$75,737,927		
44	7/4/2015			\$61,566,071				\$18,521,529				\$80,087,600		
45	7/11/2015			\$58,729,674				\$17,913,387				\$76,643,061		
46	7/18/2015			\$58,202,035				\$17,602,032				\$75,804,067		
47	7/25/2015			\$57,220,932				\$17,736,889				\$74,957,821		
48	8/1/2015			\$64,207,294				\$18,208,743				\$82,416,037		
49	8/8/2015			\$60,066,007				\$19,022,945				\$79,088,952		
50	8/15/2015			\$58,374,809				\$18,567,246				\$76,942,055		
51	8/22/2015			\$57,277,475				\$18,916,460				\$76,193,935		
52	8/29/2015			\$61,884,256				\$17,283,925				\$79,168,181		
	8/31/2015 **			\$7,949,803				\$706,956				\$8,656,759		
Total thru Current Week			\$546,410,016	\$537,554,970	\$8,855,046	1.6%	\$179,167,905	\$194,189,063	(\$15,021,159)	-7.7%	\$725,577,921	\$731,744,033	(\$6,166,113)	-0.8%
Fiscal Year Total			\$546,410,016	\$3,280,229,170			\$179,167,905	\$1,104,367,893			\$725,577,921	\$4,384,597,063		

* FY 15 includes 6 days

** FY 15 includes 2 days; FY 14 includes 1 day

Texas Lottery Commission Fiscal Year Over Year Change in Sales



Note: Week 1 is not a full week of sales as this report is prepared on a Fiscal Year basis.

Texas Lottery Commission
Instant Tickets by Price Point
Sales, Prize Expense, Sales Contribution and Payout Percentage With Year Over Year Changes
Unaudited

Fiscal Year	Price Point	# of Active Games	FY Sales	% of Instant Ticket Sales	Year over Year Change in Sales	FY Prize Expense	Year over Year Change in Prize Expense	FY Sales Contribution	Year over Year Change in Contribution	Average Prize Payout %	Year over Year Change in Payout %
2014	\$1.00	20	31,862,150	5.9%		19,094,660		12,767,490		59.9%	-1.3%
Through	\$2.00	26	65,525,040	12.2%		42,554,663		22,970,377		64.9%	-0.1%
11/2/2013	\$3.00	13	58,373,640	10.9%		38,224,623		20,149,017		65.5%	0.0%
	\$5.00	32	175,390,480	32.6%		119,135,099		56,255,381		67.9%	-0.2%
	\$10.00	11	99,638,340	18.5%		70,415,640		29,222,700		70.7%	-0.6%
	\$20.00	8	86,420,620	16.1%		64,716,001		21,704,619		74.9%	0.0%
	\$50.00	2	20,344,700	3.8%		15,794,592		4,550,108		77.6%	0.0%
Total		112	\$537,554,970			\$369,935,278		\$167,619,692		68.8%	-0.2%
2015	\$1.00	16	27,620,589	5.1%		16,544,375		11,076,214		59.9%	0.0%
thru	\$2.00	23	57,479,872	10.5%		37,288,043		20,191,829		64.9%	0.1%
11/1/2014	\$3.00	10	54,858,270	10.0%		36,157,873		18,700,397		65.9%	0.4%
	\$5.00	32	176,466,755	32.3%		119,862,445		56,604,310		67.9%	0.0%
	\$10.00	13	112,456,500	20.6%		79,458,780		32,997,720		70.7%	0.5%
	\$20.00	8	92,004,680	16.8%		68,949,456		23,055,224		74.9%	0.1%
	\$50.00	3	25,523,350	4.7%		19,833,560		5,689,790		77.7%	0.0%
Total		105	\$546,410,016			\$378,094,532		\$168,315,484		69.2%	0.4%
Variance	\$1.00	-4	-4,241,561		-13.3%	-2,550,285	-13.4%	-1,691,276	-13.2%	-0.03%	
2015 to	\$2.00	-3	-8,045,168		-12.3%	-5,266,620	-12.4%	-2,778,548	-12.1%	-0.07%	
2014	\$3.00	-3	-3,515,370		-6.0%	-2,066,750	-5.4%	-1,448,620	-7.2%	0.43%	
	\$5.00	0	1,076,275		0.6%	727,347	0.6%	348,928	0.6%	0.00%	
	\$10.00	2	12,818,160		12.9%	9,043,140	12.8%	3,775,020	12.9%	-0.01%	
	\$20.00	0	5,584,060		6.5%	4,233,455	6.5%	1,350,605	6.2%	0.06%	
	\$50.00	1	5,178,650		25.5%	4,038,968	25.6%	1,139,682	25.0%	0.07%	
Total		-7	\$8,855,046		1.6%	\$8,159,254	2.2%	\$695,792	0.4%	0.37%	

Notes - Instant Ticket Variances

Texas Lottery Commission
Instant Tickets by Price Point
Sales, Prize Expense, Sales Contribution and Payout Percentage With Year Over Year Changes
 Unaudited

		FY 2015		FY 2014		Difference
Sales	\$1 - \$5	\$316,425,486		\$331,151,310		-\$14,725,824
Prize Exp.	\$1 - \$5	\$209,852,736		\$219,009,044		-\$9,156,308
Sales Cont.	\$1 - \$5	\$106,572,750		\$112,142,266		-\$5,569,516
Prize Exp. %	\$1 - \$5	66.3%		66.1%		0.2%
		FY 2015		FY 2014		Difference
Sales	\$10 - \$50	\$229,984,530		\$206,403,660		\$23,580,870
Prize Exp.	\$10 - \$50	\$168,241,796		\$150,926,233		\$17,315,563
Sales Cont.	\$10 - \$50	\$61,742,734		\$55,477,427		\$6,265,307
Prize Exp. %	\$10 - \$50	73.2%		73.1%		0.0%
		FY 2015		FY 2014		Difference
Sales	Instant	\$546,410,016		\$537,554,970		\$8,855,046
Prize Exp.	Instant	\$378,094,532		\$369,935,278		\$8,159,254
Sales Cont.	Instant	\$168,315,484		\$167,619,692		\$695,792
Prize Exp. %	Instant	69.2%		68.8%		0.4%

		FY 2015		FY 2014		Difference
Sales	\$1 - \$10	\$428,881,986		\$430,789,650		-\$1,907,664
Prize Exp.	\$1 - \$10	\$289,311,516		\$289,424,684		-\$113,168
Sales Cont.	\$1 - \$10	\$139,570,470		\$141,364,966		-\$1,794,496
Prize Exp. %	\$1 - \$10	67.5%		67.2%		0.3%
		FY 2015		FY 2014		Difference
Sales	\$20 - \$50	\$117,528,030		\$106,765,320		\$10,762,710
Prize Exp.	\$20 - \$50	\$88,783,016		\$80,510,593		\$8,272,422
Sales Cont.	\$20 - \$50	\$28,745,014		\$26,254,727		\$2,490,288
Prize Exp. %	\$20 - \$50	75.5%		75.4%		0.1%
		FY 2015		FY 2014		Difference
Sales	Instant	\$546,410,016		\$537,554,970		\$8,855,046
Prize Exp.	Instant	\$378,094,532		\$369,935,278		\$8,159,254
Sales Cont.	Instant	\$168,315,484		\$167,619,692		\$695,792
Prize Exp. %	Instant	69.2%		68.8%		0.4%

Texas Lottery Commission
Weekly Sales Summary
& Comparison to Previous Week
 Unaudited

	Week Ending 11/01/2014		Week Ending 10/25/2014			
	<u>THIS WEEK</u>	% of Sales	<u>LAST WEEK</u>	% of Sales	<u>\$ change</u>	<u>% change</u>
Total Sales	<u>\$86,973,530</u>		<u>\$83,859,755</u>		<u>\$3,113,776</u>	3.71%
Instant Tickets	<u>\$63,404,713</u>	72.9%	<u>\$62,384,112</u>	74.4%	<u>\$1,020,601</u>	1.64%
Lotto	\$2,289,864	2.6%	\$2,201,043	2.6%	\$88,821	4.04%
Lotto Extra	\$346,139	0.4%	\$330,460	0.4%	\$15,679	4.74%
Pick 3	\$4,620,420	5.3%	\$4,585,640	5.5%	\$34,780	0.76%
Pick 3 Sum It Up	\$87,141	0.1%	\$89,676	0.1%	-\$2,536	-2.83%
Cash Five	\$925,312	1.1%	\$933,854	1.1%	-\$8,542	-0.91%
Texas Two Step	\$993,957	1.1%	\$823,726	1.0%	\$170,231	20.67%
Mega Millions	\$5,950,540	6.8%	\$4,755,898	5.7%	\$1,194,642	25.12%
Megaplier	\$1,199,010	1.4%	\$990,074	1.2%	\$208,936	21.10%
Daily 4	\$1,554,893	1.8%	\$1,560,894	1.9%	-\$6,002	-0.38%
Daily 4 Sum It Up	\$93,945	0.1%	\$96,697	0.1%	-\$2,752	-2.85%
Powerball	\$3,903,664	4.5%	\$3,449,128	4.1%	\$454,536	13.18%
Power Play	\$494,803	0.6%	\$444,897	0.5%	\$49,906	11.22%
All or Nothing	\$733,770	0.8%	\$746,246	0.9%	-\$12,476	-1.67%
Monopoly	\$375,360	0.4%	\$467,410	0.0%	-\$92,050	-19.69%
Total Draw Game Sales	<u>\$23,568,817</u>		<u>\$21,475,643</u>		<u>\$2,093,175</u>	9.75%

* Totals may not sum due to rounding.

Texas Lottery Commission
Weekly Sales Summary
Unaudited

INSTANT TICKETS
TOP TEN SELLING GAMES

For the Week Ending: 11/01/14

Rank	Price Point	Game	Sales (Millions)
1	\$ 20	HOLIDAY GAME BOOK	\$ 6.247
2	\$ 10	HOLIDAY MAGIC	\$ 3.839
3	\$ 10	\$200,000,000 CASH BLOWOUT	\$ 2.720
4	\$ 5	\$100,000 MERRY MONEY	\$ 2.650
5	\$ 50	MILLIONNAIRE'S CLUB	\$ 2.278
6	\$ 3	LOTERIA	\$ 2.277
7	\$ 3	BONUS CASHWORD	\$ 2.203
8	\$ 5	RED BALL TRIPLER	\$ 2.025
9	\$ 20	100X THE CASH	\$ 2.020
10	\$ 20	ONE MILLION CASH	\$ 2.006

Texas Lottery Commission
Prize Payout Tracking Report
Unaudited

Through the Week Ending: 11/01/14

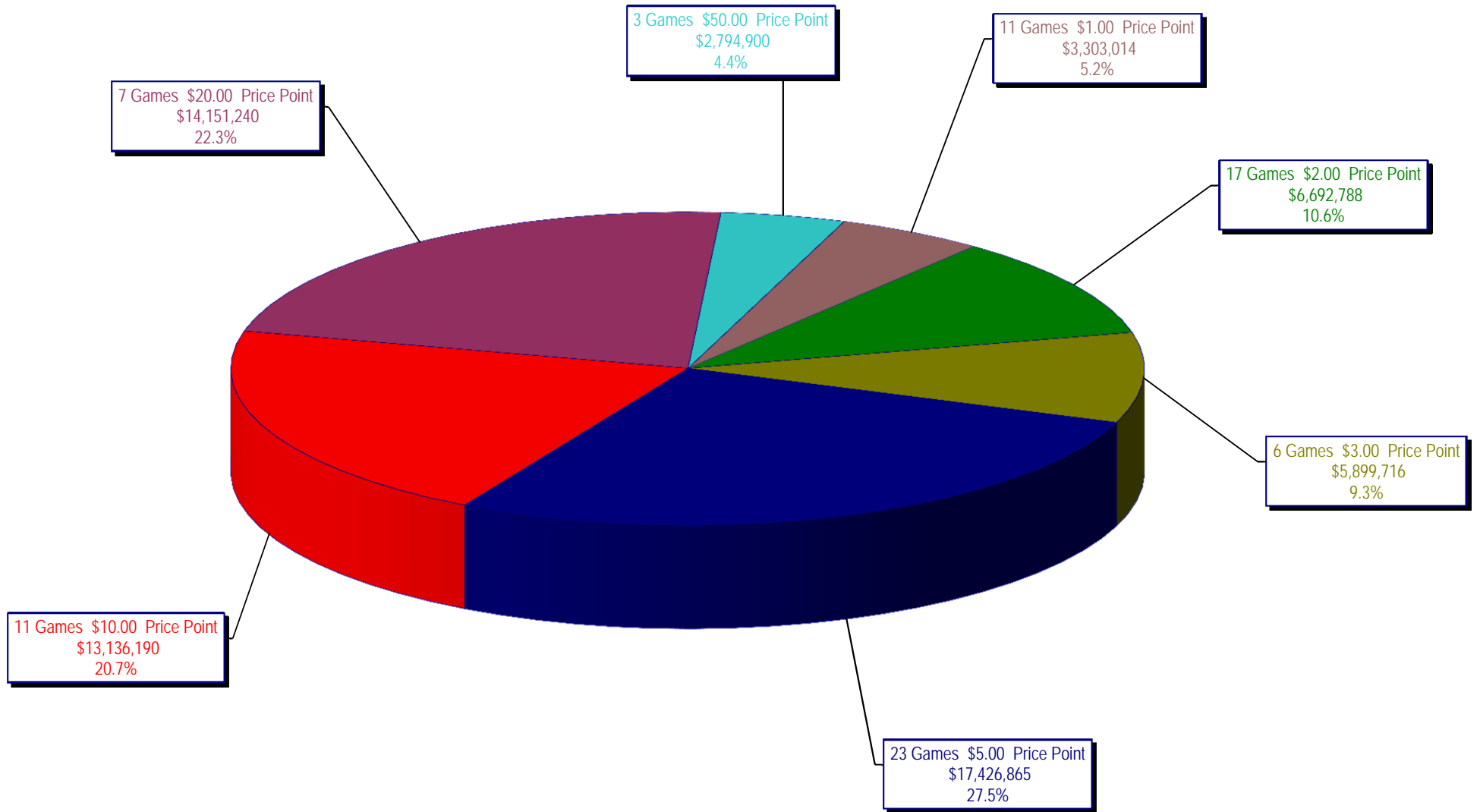
Draw Game Sales

	FY Sales Through Week Ending 11/1/2014	FY Prize Expense Through Week Ending 11/1/2014	Actual* Prize Payout	Base Payout (Prize Pool)
Lotto	\$ 20,663,401	\$ 10,432,562	50.49%	54.00%
Lotto Extra	3,108,609	1,703,804	54.81%	53.70%
Pick 3	42,366,863	19,937,850	47.06%	50.00%
Pick 3 Sum It Up	818,370	359,785	43.96%	50.00%
Cash Five	8,498,121	4,249,061	50.00%	50.00%
Texas Two Step	9,343,241	4,867,099	52.09%	50.00%
Mega Millions	29,145,373	14,729,457	50.54%	50.00%**
Megaplier	6,536,028	3,247,160	49.68%	N/A
Daily 4	14,026,646	6,632,050	47.28%	50.00%
Daily 4 Sum It Up	860,235	318,582	37.03%	50.00%
Powerball	31,989,443	16,061,613	50.21%	50.00%**
Power Play	4,114,560	2,065,845	50.21%	N/A
All or Nothing	6,854,246	4,963,264	72.41%	55.98%
Monopoly	842,770	430,598	51.09%	50.00%
Totals	\$ 179,167,905	\$ 89,998,729	50.23%	

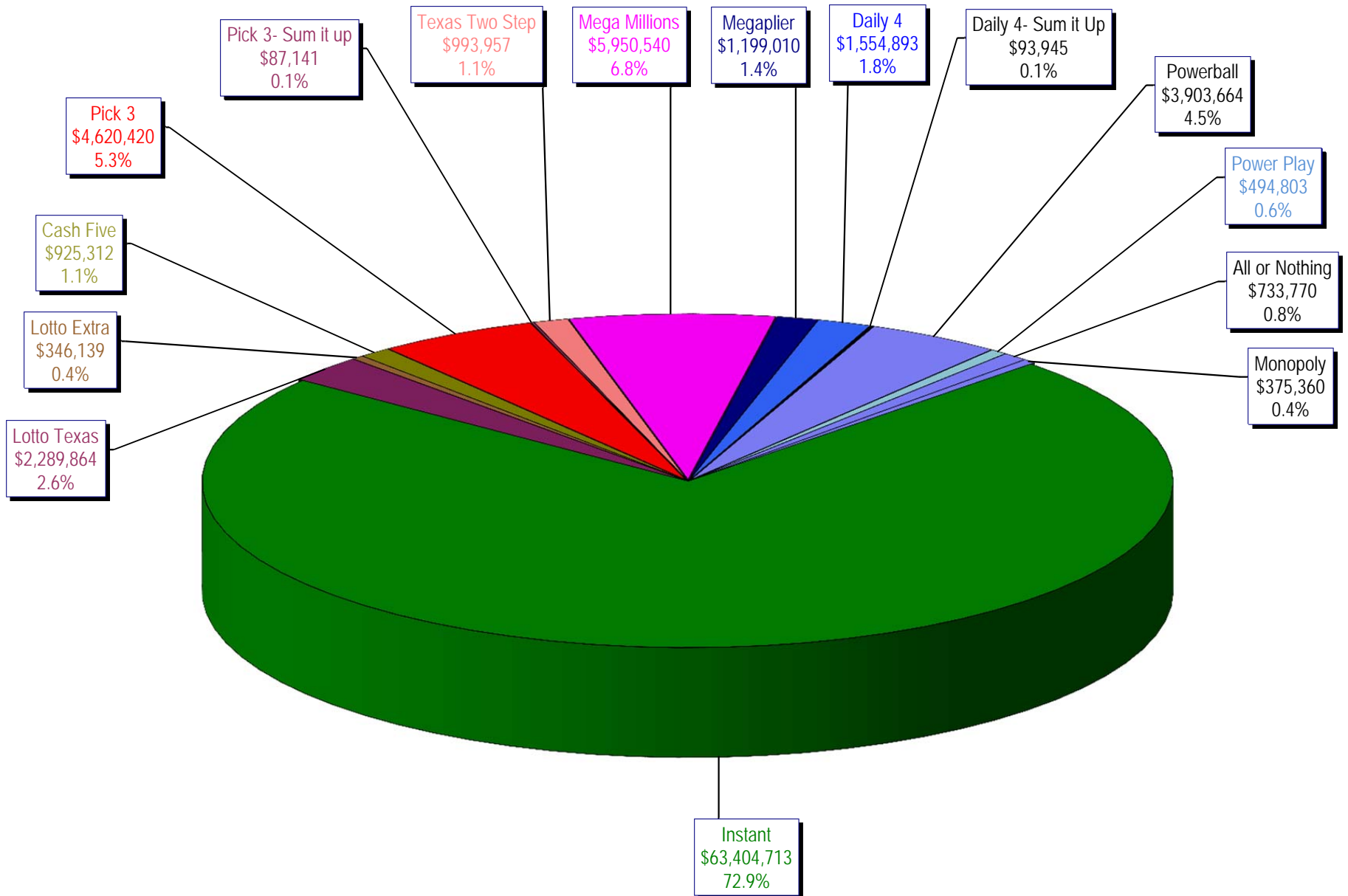
* Before Unclaimed Prizes

** Estimated; depends on # of guaranteed prizes won in Texas

Texas Lottery Commission
Instant Ticket Sales
For the Week Ending 11/01/14
(Unaudited)



Texas Lottery Commission
All Game Sales
For the Week Ending 11/01/14
(Unaudited)



Texas Lottery Commission - Weekly Sales Summary for FY 2015 (Unaudited)

Week Ended	Instant Games	New Games & Dates	Lotto Texas	Jackpot W	S	Lotto Extra	Pick 3	Pick 3 Sum It Up	Cash Five	Texas Two Step	Jackpot M	TH	Mega Millions	Jackpot T	F	Megaplier	Daily 4	Daily 4 Sum It Up	Powerball	Jackpot W	S	Power Play	All or Nothing	Monopoly	Jackpot F	Total	Per Cap.
9/06/2014*	62,861,604	1589 (\$1.N); 1592 (\$5.N) - 9/1/14	2,281,237	6	6.25	341,232	4,827,600	92,305	958,777	918,635	225	300	1,847,432	25	33	475,313	1,640,023	104,626	3,465,202	100	110	450,723	786,340			81,051,048	3.11
9/13/2014	61,436,533	0	2,299,834	6.5	6.75	344,225	4,787,666	91,850	960,067	1,214,553	425	575	1,992,737	41	52	501,468	1,571,433	97,036	3,957,407	127	149	497,718	781,088			80,533,614	3.09
9/20/2014	60,959,234	1647 (\$2.N); 1619 (\$5.N) - 9/15/14	2,307,003	7	7.25	347,119	4,624,949	89,960	952,214	1,582,291	750	925	2,149,120	62	72	528,733	1,536,913	95,355	4,985,548	171	196	597,868	770,822			81,527,128	3.13
9/27/2014	59,710,056	0	2,357,199	7.5	8.25	353,734	4,540,964	89,289	938,745	1,244,640	1,175	200	2,417,365	83	93	579,889	1,512,957	91,998	4,478,698	225	40	544,723	770,628			79,630,884	3.06
10/4/2014	62,119,854	0	2,385,322	9	9.5	360,937	4,942,321	94,197	971,047	854,141	200	200	2,966,004	105	120	682,825	1,588,795	98,392	2,443,237	50	60	348,166	786,038			80,651,275	3.09
10/11/2014	61,253,665	1608 (\$1.N); 1653 (\$5.N); 1651 (\$10.N) - 10/6/14	2,363,624	10.25	11	355,219	4,893,634	94,926	959,659	935,385	225	300	3,310,874	136	150	748,248	1,580,735	94,717	2,522,774	70	80	356,145	769,392			80,238,997	3.08
10/18/2014	60,230,048	0	2,267,582	11.5	5	343,643	4,664,420	92,081	946,399	842,255	200	225	3,839,669	166	180	841,086	1,522,939	90,307	2,937,145	90	100	398,723	752,154			79,768,450	3.06
10/25/2014	62,384,112	1655 (\$1.N); 1652 (\$2.N); 1638 (\$10.N); 1637 (\$20.N) - 10/20/14	2,201,043	5.25	5.5	330,460	4,585,640	89,676	933,854	823,726	200	225	4,755,898	200	224	990,074	1,560,894	96,697	3,449,128	110	125	444,897	746,246	467,410	15	83,859,755	3.22
11/1/2014	63,404,713	1648 (\$3.N) - 10/31/14	2,289,864	5.75	6	346,139	4,620,420	87,141	925,312	993,957	300	425	5,950,540	252	284	1,199,010	1,554,893	93,945	3,903,664	142	159	494,803	733,770	375,360	18	86,973,530	3.34
weekly change	1.6%		4.0%			4.7%	0.8%	-2.8%	-0.9%	20.7%			25.1%			21.1%	-0.4%	-2.8%	13.2%			11.2%	-1.7%			-19.7%	
	SALES		SALES			SALES	SALES	SALES	SALES	SALES			SALES			SALES	SALES	SALES	SALES			SALES	SALES	SALES		SALES	% of Sales
Calendar Year to date	2,766,512,292		111,922,914			16,142,172	213,076,148	4,204,948	43,297,002	47,577,786			124,661,407			28,913,594	69,808,816	4,312,417	156,323,559			19,824,497	37,632,043	842,770		3,645,052,364	100.0%
Fiscal Year to date 2015	546,410,016		20,663,401			3,108,609	42,366,863	818,370	8,498,121	9,343,241			29,145,373			6,536,028	14,026,646	860,235	31,989,443			4,114,560	6,854,246	842,770		725,577,921	100.0%
*Full week includes 1 day from FY14																											