



*WEEKLY SALES SUMMARY*

Unaudited

[Week Ending: 11/02/2013](#)

Texas Lottery Commission  
Fiscal Year to Date Sales Comparison  
Unaudited

Through the Week Ending 11/02/2013 (9 Weeks)

Sales by Game	FY 2012 *	FY 2013 **	FY 2014	\$ Change		% Change	
				FY 2014 to FY 2012	FY 2014 to FY 2013	FY 2014 to FY 2012	FY 2014 to FY 2013
Instants	\$ 493,357,725	\$ 519,298,663	\$ 537,554,970	\$ 44,197,245	\$ 18,256,307	9.0%	3.5%
Lotto Texas	31,188,913	29,167,636	23,770,935	-7,417,978	-5,396,701	-23.8%	-18.5%
Lotto Extra	-	-	2,971,948	2,971,948	2,971,948	-	-
Pick 3	47,004,913	45,882,707	43,434,421	-3,570,493	-2,448,287	-7.6%	-5.3%
Pick 3 Sum It Up	950,611	874,191	863,132	-87,479	-11,060	-9.2%	-1.3%
Cash Five	11,538,838	10,086,322	9,098,142	-2,440,696	-988,180	-21.2%	-9.8%
Texas Two Step	12,018,851	9,564,008	9,144,053	-2,874,798	-419,955	-23.9%	-4.4%
Mega Millions	25,529,263	19,656,368	23,326,022	-2,203,241	3,669,654	-8.6%	18.7%
Megaplier	5,798,930	4,511,967	5,145,898	-653,032	633,931	-11.3%	14.0%
Daily 4	10,926,708	12,130,713	14,117,379	3,190,671	1,986,666	29.2%	16.4%
Daily 4 Sum It Up	824,829	825,685	874,112	49,283	48,427	6.0%	5.9%
Powerball	26,136,396	28,498,181	47,669,117	21,532,721	19,170,936	82.4%	67.3%
Power Play	5,482,218	3,607,176	5,306,092	-176,126	1,698,916	-3.2%	47.1%
All or Nothing	-	17,788,773	8,467,814	8,467,814	-9,320,959	-	-52.4%
<b>Total</b>	<b>\$ 670,758,194</b>	<b>\$ 701,892,390</b>	<b>\$ 731,744,033</b>	<b>\$ 60,985,840</b>	<b>\$ 29,851,644</b>	<b>9.1%</b>	<b>4.3%</b>

\* 3 extra days

\*\* 1 extra day

Texas Lottery Commission  
Fiscal Year to Date Cumulative Average Sales Comparison  
Unaudited

Through the Week Ending 11/02/2013 (9 Weeks)

Sales by Game	FY 2012	FY 2013	FY 2014
Instant	\$ 7,475,117	\$ 8,114,042	\$ 8,532,619
Lotto Texas	472,559	455,744	377,316
Lotto Extra	-	-	47,174
Pick 3	712,196	716,917	689,435
Pick 3 Sum It Up	14,403	13,659	13,701
Cash Five	174,831	157,599	144,415
Texas Two Step	182,104	149,438	145,144
Mega Millions	386,807	307,131	370,254
Megaplier	87,863	70,499	81,681
Daily 4	165,556	189,542	224,085
Daily 4 Sum It Up	12,497	12,901	13,875
Powerball	396,006	445,284	756,653
Power Play	83,064	56,362	84,224
All or Nothing	- *	317,657	134,410
<b>Total</b>	<b>\$ 10,163,003</b>	<b>\$ 11,006,776</b>	<b>\$ 11,614,985</b>

thru 11/5/2011  
66 days

\*

thru 11/3/2012  
64 days  
56 days

thru 11/2/2013  
63 days

Texas Lottery Commission  
Fiscal Year Over Year Change in Sales  
Unaudited  
FY 2014 Compared to FY 2013

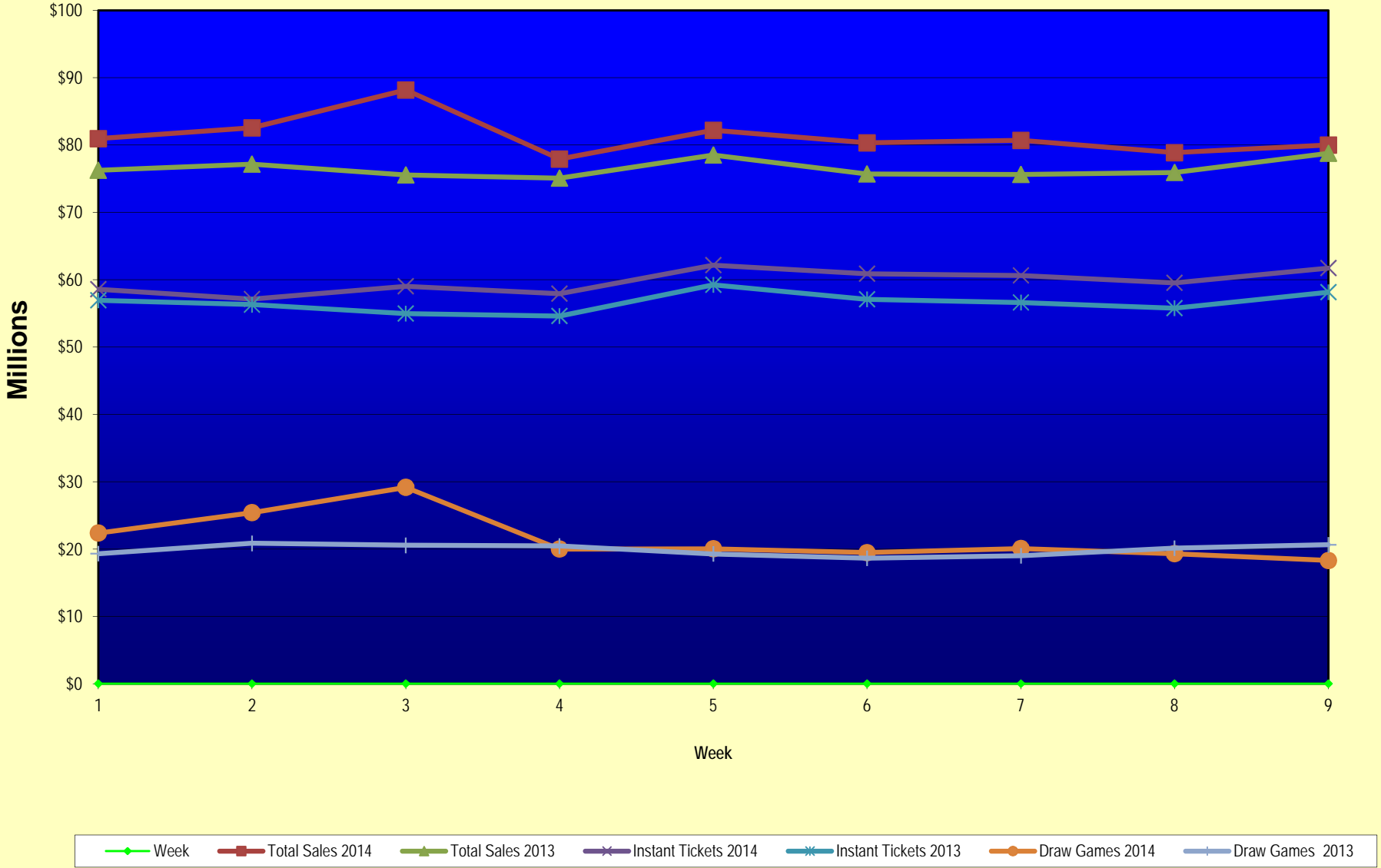
			INSTANT TICKETS				DRAW GAMES				TOTAL SALES			
FY 2014			% change -				% change -				% change -			
Week	Week	Ending	FY 2014	FY 2013	Difference	Cumulative Sales	FY 2014	FY 2013	Difference	Cumulative Sales	FY 2014	FY 2013	Difference	Cumulative Sales
0	9/1/2013 *		\$0	\$9,611,328	(\$9,611,328)	-100.0%	\$0	\$3,712,535	(\$3,712,535)	-100.0%	\$0	\$13,323,863	(\$13,323,863)	-100.0%
1	9/7/2013		\$58,587,757	\$56,941,761	\$1,645,996	2.9%	\$22,369,499	\$19,305,417	\$3,064,082	15.9%	\$80,957,256	\$76,247,178	\$4,710,078	6.2%
2	9/14/2013		\$57,135,931	\$56,302,875	\$833,056	1.5%	\$25,412,980	\$20,857,230	\$4,555,750	21.8%	\$82,548,911	\$77,160,105	\$5,388,806	7.0%
3	9/21/2013		\$59,018,194	\$54,974,438	\$4,043,756	7.4%	\$29,161,241	\$20,570,277	\$8,590,964	41.8%	\$88,179,435	\$75,544,715	\$12,634,720	16.7%
4	9/28/2013		\$57,927,984	\$54,606,674	\$3,321,310	6.1%	\$20,012,313	\$20,462,690	(\$450,378)	-2.2%	\$77,940,297	\$75,069,364	\$2,870,933	3.8%
5	10/5/2013		\$62,146,816	\$59,223,327	\$2,923,489	4.9%	\$20,043,557	\$19,279,973	\$763,584	4.0%	\$82,190,373	\$78,503,300	\$3,687,073	4.7%
6	10/12/2013		\$60,867,582	\$57,075,606	\$3,791,976	6.6%	\$19,480,962	\$18,638,467	\$842,496	4.5%	\$80,348,544	\$75,714,073	\$4,634,472	6.1%
7	10/19/2013		\$60,612,193	\$56,630,134	\$3,982,059	7.0%	\$20,079,610	\$18,998,943	\$1,080,668	5.7%	\$80,691,803	\$75,629,077	\$5,062,727	6.7%
8	10/26/2013		\$59,548,277	\$55,789,743	\$3,758,534	6.7%	\$19,319,928	\$20,130,190	(\$810,262)	-4.0%	\$78,868,205	\$75,919,933	\$2,948,273	3.9%
9	11/2/2013		\$61,710,236	\$58,142,777	\$3,567,459	6.1%	\$18,308,976	\$20,638,008	(\$2,329,032)	-11.3%	\$80,019,212	\$78,780,785	\$1,238,427	1.6%
10	11/9/2013			\$57,484,804				\$20,862,872				\$78,347,676		
11	11/16/2013			\$55,805,228				\$21,660,705				\$77,465,933		
12	11/23/2013			\$61,331,977				\$27,172,853				\$88,504,830		
13	11/30/2013			\$58,420,598				\$62,797,943				\$121,218,541		
14	12/7/2013			\$62,489,745				\$19,630,155				\$82,119,900		
15	12/14/2013			\$59,661,880				\$20,064,982				\$79,726,862		
16	12/21/2013			\$63,556,886				\$19,084,653				\$82,641,539		
17	12/28/2013			\$63,547,886				\$17,359,874				\$80,907,760		
18	1/4/2014			\$60,452,721				\$18,833,047				\$79,285,768		
19	1/11/2014			\$58,862,997				\$18,879,167				\$77,742,164		
20	1/18/2014			\$58,494,057				\$19,258,004				\$77,752,061		
21	1/25/2014			\$57,871,744				\$20,093,215				\$77,964,959		
22	2/1/2014			\$61,846,715				\$21,032,335				\$82,879,050		
23	2/8/2014			\$70,374,906				\$21,183,638				\$91,558,544		
24	2/15/2014			\$71,002,438				\$19,295,197				\$90,297,635		
25	2/22/2014			\$71,203,934				\$19,729,989				\$90,933,923		
26	3/1/2014			\$74,551,567				\$20,278,327				\$94,829,894		
27	3/8/2014			\$75,360,138				\$21,447,763				\$96,807,901		
28	3/15/2014			\$70,065,528				\$22,055,563				\$92,121,091		
29	3/22/2014			\$70,137,284				\$28,709,024				\$98,846,308		
30	3/29/2014			\$68,758,522				\$18,597,091				\$87,355,613		
31	4/5/2014			\$73,270,054				\$20,048,992				\$93,319,046		
32	4/12/2014			\$64,738,900				\$19,697,793				\$84,436,693		
33	4/19/2014			\$63,252,072				\$20,245,083				\$83,497,155		
34	4/26/2014			\$62,766,647				\$21,162,888				\$83,929,535		
35	5/3/2014			\$66,251,082				\$23,628,101				\$89,879,183		
36	5/10/2014			\$65,748,723				\$26,735,480				\$92,484,203		
37	5/17/2014			\$63,348,463				\$61,124,604				\$124,473,067		
38	5/24/2014			\$60,537,133				\$18,730,138				\$79,267,271		
39	5/31/2014			\$58,547,555				\$18,317,891				\$76,865,446		
40	6/7/2014			\$62,113,508				\$18,374,935				\$80,488,443		

Texas Lottery Commission  
Fiscal Year Over Year Change in Sales  
Unaudited  
FY 2014 Compared to FY 2013

Week	Week Ending	FY 2014	FY 2013	INSTANT TICKETS		DRAW GAMES				TOTAL SALES			
				Difference	% change - Cumulative Sales	FY 2014	FY 2013	Difference	% change - Cumulative Sales	FY 2014	FY 2013	Difference	% change - Cumulative Sales
41	6/14/2014		\$58,988,468				\$18,101,981				\$77,090,449		
42	6/21/2014		\$61,199,484				\$18,675,967				\$79,875,451		
43	6/28/2014		\$59,435,096				\$18,026,964				\$77,462,060		
44	7/5/2014		\$63,457,072				\$18,556,140				\$82,013,212		
45	7/12/2014		\$60,046,267				\$17,669,864				\$77,716,131		
46	7/19/2014		\$61,952,164				\$19,002,142				\$80,954,306		
47	7/26/2014		\$58,251,955				\$20,309,411				\$78,561,366		
48	8/2/2014		\$63,652,675				\$25,295,830				\$88,948,505		
49	8/9/2014		\$56,800,305				\$33,349,261				\$90,149,566		
50	8/16/2014		\$55,607,891				\$17,625,289				\$73,233,180		
51	8/23/2014		\$55,988,956				\$18,099,850				\$74,088,806		
52	8/30/2014		\$56,059,026				\$20,294,026				\$76,353,052		
Total thru Current Week		\$537,554,970	\$519,298,663	\$18,256,307	3.5%	\$194,189,063	\$182,593,727	\$11,595,337	6.4%	\$731,744,033	\$701,892,390	\$29,851,644	4.3%
Fiscal Year Total		\$537,554,970	\$3,222,593,714			\$194,189,063	\$1,153,692,742			\$731,744,033	\$4,376,286,456		

\* FY 13 includes 1 day

### Texas Lottery Commission Fiscal Year Over Year Change in Sales



Note: Week 1 is not a full week of sales as this report is prepared on a Fiscal Year basis.

Texas Lottery Commission  
**Instant Tickets by Price Point**  
Sales, Prize Expense, Sales Contribution and Payout Percentage With Year Over Year Changes  
Unaudited

Fiscal Year	Price Point	# of Active Games	FY Sales	% of Instant Ticket Sales	Year over Year Change in Sales	FY Prize Expense	Year over Year Change in Prize Expense	FY Sales Contribution	Year over Year Change in Contribution	Average Prize Payout %	Year over Year Change in Payout %
2013	\$1.00	23	30,599,535	5.9%		18,538,384		12,061,151		60.6%	-0.1%
thru	\$2.00	25	65,262,228	12.6%		42,433,360		22,828,868		65.0%	-0.1%
11/3/2012	\$3.00	13	67,818,447	13.1%		44,478,801		23,339,646		65.6%	0.1%
	\$5.00	39	159,283,840	30.7%		108,118,946		51,164,894		67.9%	-0.2%
	\$7.00	2	9,987,383	1.9%		6,788,087		3,199,296		68.0%	0.0%
	\$10.00	11	85,167,040	16.4%		60,236,120		24,930,920		70.7%	-0.2%
	\$20.00	7	80,991,140	15.6%		60,617,922		20,373,218		74.8%	0.1%
	\$50.00	2	20,189,050	3.9%		15,675,778		4,513,272		77.6%	0.0%
<b>Total</b>		<b>122</b>	<b>\$519,298,663</b>			<b>\$356,887,398</b>		<b>\$162,411,265</b>		<b>68.7%</b>	<b>0.2%</b>
2014	\$1.00	20	31,862,150	5.9%		19,094,660		12,767,490		59.9%	-1.3%
thru	\$2.00	26	65,525,040	12.2%		42,554,663		22,970,377		64.9%	-0.1%
11/2/2013	\$3.00	13	58,373,640	10.9%		38,224,623		20,149,017		65.5%	0.0%
	\$5.00	32	175,390,480	32.6%		119,135,099		56,255,381		67.9%	-0.2%
	\$7.00	0	0	0.0%		0		-		0.0%	0.0%
	\$10.00	11	99,638,340	18.5%		70,415,640		29,222,700		70.7%	-0.6%
	\$20.00	8	86,420,620	16.1%		64,716,001		21,704,619		74.9%	0.0%
	\$50.00	2	20,344,700	3.8%		15,794,592		4,550,108		77.6%	0.0%
<b>Total</b>		<b>112</b>	<b>\$537,554,970</b>			<b>\$369,935,278</b>		<b>\$167,619,692</b>		<b>68.8%</b>	<b>-0.2%</b>
Variance	\$1.00	-3	1,262,615		4.1%	556,276	3.0%	706,339	5.9%	-0.65%	
2014 to	\$2.00	1	262,812		0.4%	121,303	0.3%	141,509	0.6%	-0.08%	
2013	\$3.00	0	-9,444,807		-13.9%	-6,254,179	-14.1%	-3,190,628	-13.7%	-0.10%	
	\$5.00	-7	16,106,640		10.1%	11,016,153	10.2%	5,090,487	9.9%	0.05%	
	\$7.00	-2	-9,987,383		-100.0%	-6,788,087	-100.0%	-3,199,296	-100.0%	-67.97%	
	\$10.00	0	14,471,300		17.0%	10,179,520	16.9%	4,291,780	17.2%	-0.06%	
	\$20.00	1	5,429,480		6.7%	4,098,079	6.8%	1,331,401	6.5%	0.04%	
	\$50.00	0	155,650		0.8%	118,814	0.8%	36,836	0.8%	-0.01%	
<b>Total</b>		<b>-10</b>	<b>\$18,256,307</b>		<b>3.5%</b>	<b>\$13,047,879</b>	<b>3.7%</b>	<b>\$5,208,428</b>	<b>3.2%</b>	<b>0.10%</b>	

Notes - Instant Ticket Variances

Texas Lottery Commission  
**Instant Tickets by Price Point**  
**Sales, Prize Expense, Sales Contribution and Payout Percentage With Year Over Year Changes**  
 Unaudited

			FY 2014		FY 2013	Difference
Sales	\$1 - \$7	1	\$331,151,310		\$332,951,433	-\$1,800,123
Prize Exp.	\$1 - \$7	1	\$219,009,044		\$220,357,578	-\$1,348,534
Sales Cont.	\$1 - \$7	1	\$112,142,266		\$112,593,855	-\$451,589
Prize Exp. %	\$1 - \$7	1	66.1%		66.2%	0.0%
			FY 2014		FY 2013	Difference
Sales	\$10 - \$50	2	\$206,403,660		\$186,347,230	\$20,056,430
Prize Exp.	\$10 - \$50	2	\$150,926,233		\$136,529,820	\$14,396,414
Sales Cont.	\$10 - \$50	1	\$55,477,427		\$49,817,410	\$5,660,016
Prize Exp. %	\$10 - \$50	2	73.1%		73.3%	-0.1%
			FY 2014		FY 2013	Difference
Sales	Instant		\$537,554,970		\$519,298,663	\$18,256,307
Prize Exp.	Instant		\$369,935,278		\$356,887,398	\$13,047,879
Sales Cont.	Instant		\$167,619,692		\$162,411,265	\$5,208,428
Prize Exp. %	Instant		68.8%		68.7%	0.1%

			FY 2014		FY 2013	Difference
Sales	\$1 - \$10		\$430,789,650		\$418,118,473	\$12,671,177
Prize Exp.	\$1 - \$10		\$289,424,684		\$280,593,698	\$8,830,986
Sales Cont.	\$1 - \$10		\$141,364,966		\$137,524,775	\$3,840,191
Prize Exp. %	\$1 - \$10		67.2%		67.1%	0.1%
			FY 2014		FY 2013	Difference
Sales	\$20 - \$50		\$106,765,320		\$101,180,190	\$5,585,130
Prize Exp.	\$20 - \$50		\$80,510,593		\$76,293,700	\$4,216,893
Sales Cont.	\$20 - \$50		\$26,254,727		\$24,886,490	\$1,368,237
Prize Exp. %	\$20 - \$50		75.4%		75.4%	0.0%
			FY 2014		FY 2013	Difference
Sales	Instant		\$537,554,970		\$519,298,663	\$18,256,307
Prize Exp.	Instant		\$369,935,278		\$356,887,398	\$13,047,879
Sales Cont.	Instant		\$167,619,692		\$162,411,265	\$5,208,428
Prize Exp. %	Instant		68.8%		68.7%	0.1%



Texas Lottery Commission  
**Weekly Sales Summary**  
**& Comparison to Previous Week**  
 Unaudited

	Week Ending 11/02/2013		Week Ending 10/26/2013			
	<u>THIS WEEK</u>	% of Sales	<u>LAST WEEK</u>	% of Sales	<u>\$ change</u>	<u>% change</u>
Total Sales	<u>\$80,019,212</u>		<u>\$78,868,205</u>		<u>\$1,151,007</u>	1.46%
Instant Tickets	<u>\$61,710,236</u>	77.1%	<u>\$59,548,277</u>	75.5%	<u>\$2,161,959</u>	3.63%
Lotto	\$2,370,679	3.0%	\$2,318,924	2.9%	\$51,755	2.23%
Lotto Extra	\$307,933	0.4%	\$297,319	0.4%	\$10,614	3.57%
Pick 3	\$4,842,493	6.1%	\$4,702,074	6.0%	\$140,419	2.99%
Pick 3 Sum It Up	\$96,454	0.1%	\$92,890	0.1%	\$3,565	3.84%
Cash Five	\$1,006,508	1.3%	\$991,912	1.3%	\$14,596	1.47%
Texas Two Step	\$1,034,914	1.3%	\$830,330	1.1%	\$204,584	24.64%
Mega Millions	\$2,200,241	2.7%	\$2,138,960	2.7%	\$61,281	2.86%
Megaplier	\$518,514	0.6%	\$514,665	0.7%	\$3,849	0.75%
Daily 4	\$1,660,955	2.1%	\$1,635,640	2.1%	\$25,315	1.55%
Daily 4 Sum It Up	\$106,051	0.1%	\$102,731	0.1%	\$3,320	3.23%
Powerball	\$2,890,169	3.6%	\$4,306,600	5.5%	-\$1,416,431	-32.89%
Power Play	\$385,390	0.5%	\$503,870	0.6%	-\$118,480	-23.51%
All or Nothing	\$888,676	1.1%	\$884,014	1.1%	\$4,662	0.53%
Total Draw Game Sales	<u>\$18,308,976</u>		<u>\$19,319,928</u>		<u>-\$1,010,953</u>	-5.23%

\* Totals may not sum due to rounding.

Texas Lottery Commission  
Weekly Sales Summary  
Unaudited

INSTANT TICKETS  
TOP TEN SELLING GAMES

For the Week Ending: 11/02/13

Rank	Price Point	Game	Sales (Millions)
1	\$ 10	SUPER WEEKLY GRAND	\$ 4.103
2	\$ 10	GIFTS GALORE	\$ 3.787
3	\$ 5	TRIM THE TREE	\$ 3.297
4	\$ 5	BONUS WEEKLY GRAND	\$ 3.293
5	\$ 20	HOLIDAY MILLIONS	\$ 3.046
6	\$ 3	LOTERIA TEXAS	\$ 2.228
7	\$ 20	\$1,000,000 JACKPOT	\$ 2.030
8	\$ 10	10X MEGA MONEY	\$ 2.013
9	\$ 5	SAPPHIRE 7'S	\$ 2.006
10	\$ 5	\$75,000 CASHWORD-O-RAMA	\$ 1.929

Texas Lottery Commission  
Prize Payout Tracking Report  
Unaudited

Through the Week Ending 11/02/13

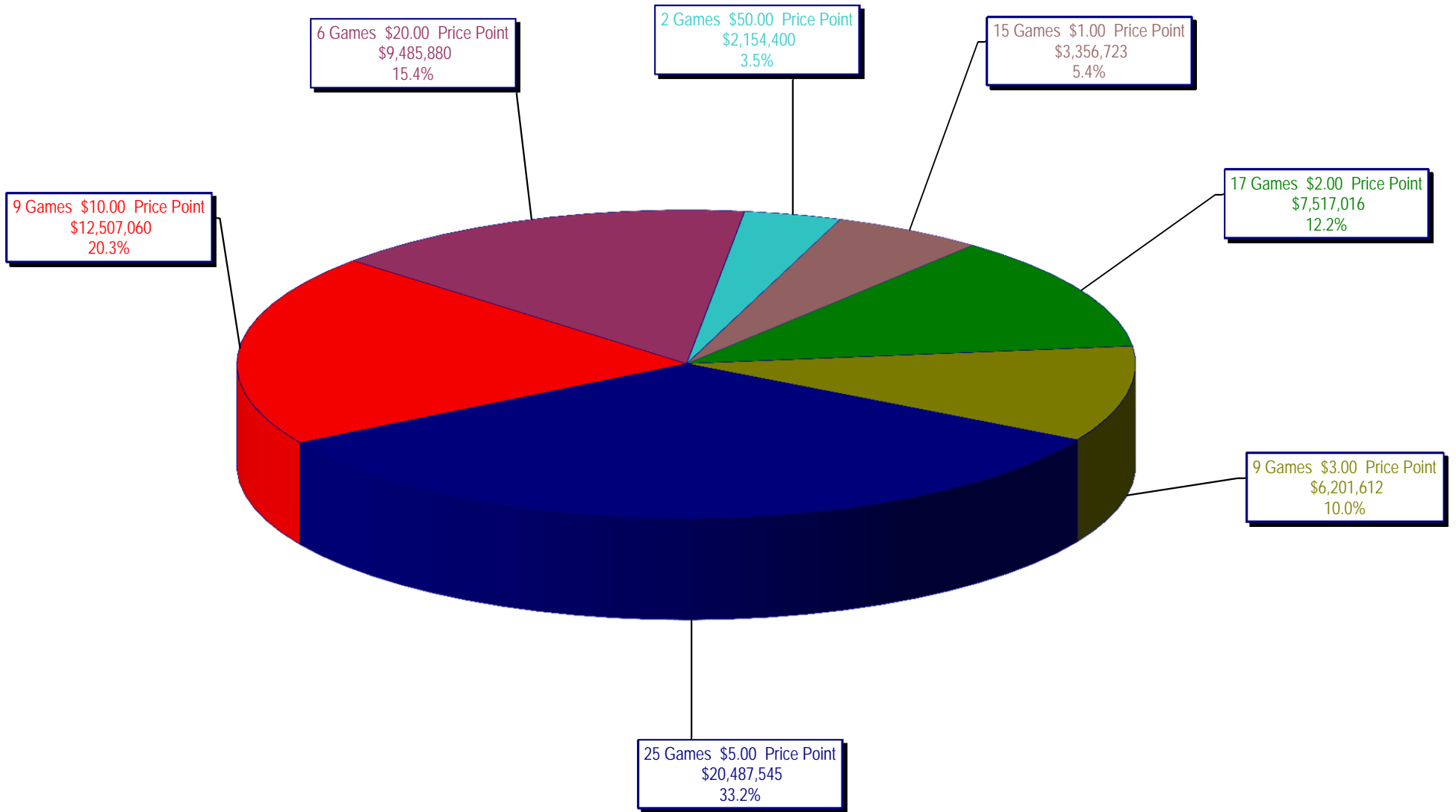
Draw Game Sales

		FY Sales Through Week Ending 11/2/2013		FY Prize Expense Through Week Ending 11/2/2013	Actual* Prize Payout	Base Payout (Prize Pool)
Lotto	\$	23,770,935	\$	12,006,462	50.51%	54.00%
Lotto Extra		2,971,948		1,674,418	56.34%	53.70%
Pick 3		43,434,421		21,652,450	49.85%	50.00%
Pick 3 Sum It Up		863,132		400,684	46.42%	50.00%
Cash Five		9,098,142		4,549,117	50.00%	50.00%
Texas Two Step		9,144,053		4,677,382	51.15%	50.00%
Mega Millions		23,326,022		11,642,976	49.91%	50.00%**
Megaplier		5,145,898		2,609,298	50.71%	N/A
Daily 4		14,117,379		8,599,100	60.91%	50.00%
Daily 4 Sum It Up		874,112		904,248	103.45%	50.00%
Powerball		47,669,117		23,129,842	48.52%	50.00%**
Power Play		5,306,092		1,959,906	36.94%	N/A
All or Nothing		8,467,814		4,577,186	54.05%	55.98%
<b>Totals</b>	\$	<b>194,189,063</b>	\$	<b>98,383,070</b>	<b>50.66%</b>	

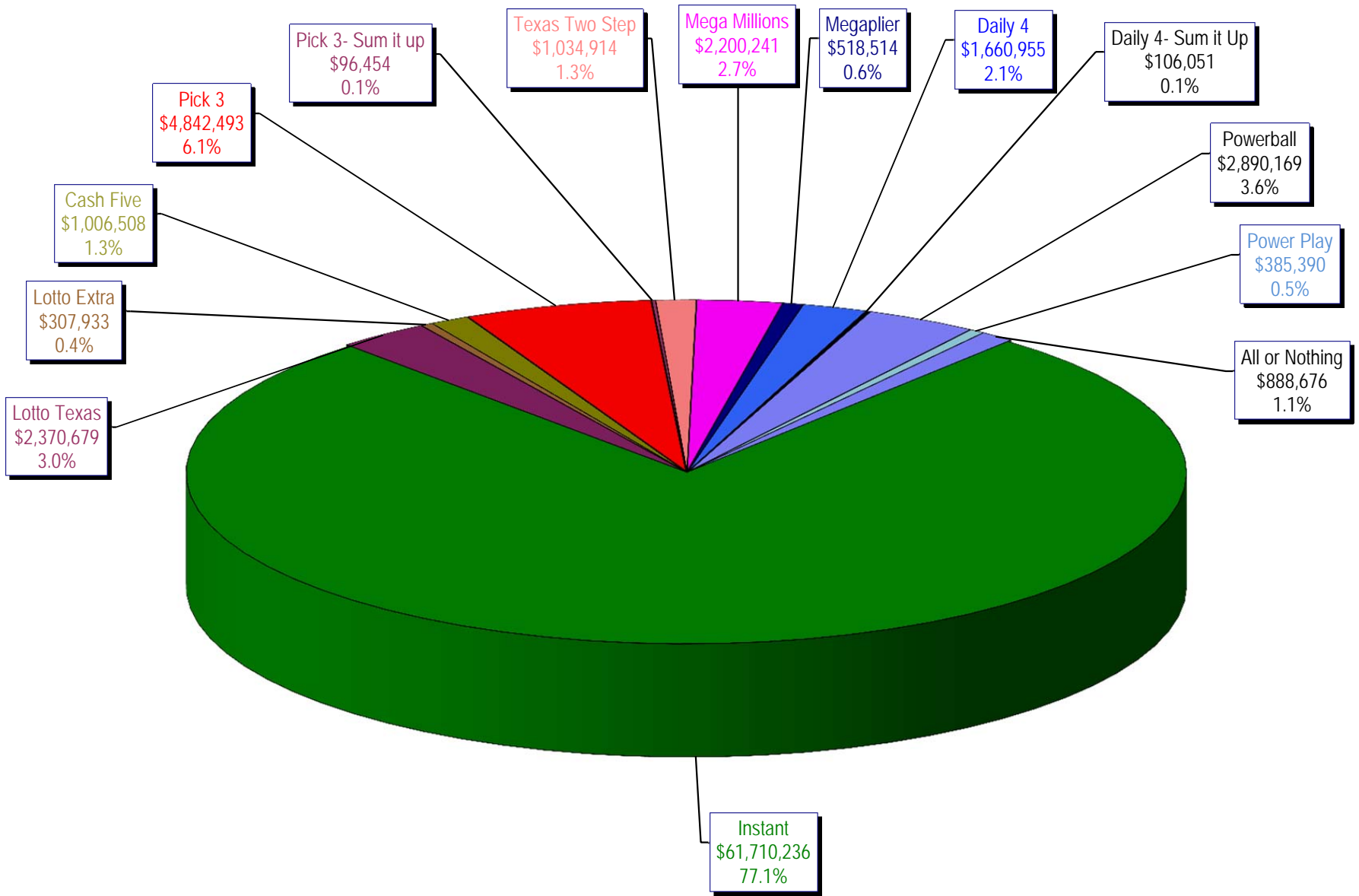
\* Before Unclaimed Prizes

\*\* Estimated; depends on # of guaranteed prizes won in Texas

Texas Lottery Commission  
Instant Ticket Sales  
For the Week Ending 11/02/13  
(Unaudited)



**Texas Lottery Commission**  
**All Game Sales**  
**For the Week Ending 11/02/13**  
**(Unaudited)**



Texas Lottery Commission - Weekly Sales Summary for FY 2014 (Unaudited)

Week Ended	Instant Games	New Games & Dates	Lotto Texas	Jackpot		Lotto Extra	Pick 3	Pick 3 Sum It Up	Cash Five	Texas Two Step	Jackpot		Mega Millions	Jackpot		Megaplier	Daily 4	Daily 4 Sum It Up	Powerball	Jackpot		Power Play	All or Nothing	Total	Per Cap.
				W	S						M	TH		T	F					W	S				
9/7/2013	58,587,757	0	2,677,829	8	9	329,933	4,945,500	89,456	1,036,149	1,417,992	600	775	2,409,195	85	95	540,148	1,453,721	84,220	5,730,736	169	203	650,070	1,004,550	80,957,256	3.11
9/14/2013	57,135,931	1554 (\$1.N); 1555 (\$2.N); 1556 (\$5.N); 1557 (\$10.N) - 09/09/13	2,667,851	9.75	10.75	331,113	4,795,787	98,347	1,011,617	1,209,874	1	200	2,942,905	106	119	623,938	1,431,261	87,188	8,313,548	245	317	861,842	1,037,710	82,548,911	3.17
9/21/2013	59,018,194	0	2,793,973	11.50	12.50	346,650	4,806,820	94,670	1,008,752	908,904	225	300	3,395,333	130	145	704,431	1,513,941	92,441	11,449,786	400	40	1,072,426	973,114	88,179,435	3.38
9/28/2013	57,927,984	1558 (\$2.N); 1523 (\$5.N) - 09/23/13	2,653,111	13.25	14	329,426	4,679,375	95,344	994,775	852,100	200	225	3,688,920	160	173	744,933	1,523,950	94,444	3,041,612	50	60	392,576	921,748	77,940,297	2.99
10/5/2013	62,146,816	0	2,758,867	15	15.75	341,320	5,022,201	105,398	1,038,159	842,921	200	200	2,878,147	189	12	615,856	1,694,849	108,583	3,263,494	70	86	416,767	956,996	82,190,373	3.15
10/12/2013	60,867,582	1560 (\$1.N); 1561 (\$5.N); 1562 (\$20.N) - 10/7/13	2,820,574	16.5	17.75	348,512	4,834,261	97,324	1,011,724	926,156	225	300	1,819,995	14	22	440,456	1,607,225	100,756	4,066,595	108	133	489,491	917,894	80,348,544	3.08
10/19/2013	60,612,193	0	2,709,127	18.5	19.5	339,742	4,805,913	93,251	998,546	1,120,862	425	575	1,852,326	29	37	442,957	1,595,838	97,700	4,606,577	156	186	533,660	883,112	80,691,803	3.10
10/26/2013	59,548,277	1563 (\$2.N); 1564 (\$5.N); 1571 (\$10.N) - 10/21/13	2,318,924	5	5.25	297,319	4,702,074	92,890	991,912	830,330	200	225	2,138,960	55	65	514,665	1,635,640	102,731	4,306,600	216	40	503,870	884,014	78,868,205	3.03
11/2/2013	61,710,236	0	2,370,679	5.5	5.75	307,933	4,842,493	96,454	1,006,508	1,034,914	300	425	2,200,241	75	87	518,514	1,660,955	106,051	2,890,169	50	60	385,390	888,676	80,019,212	3.07
weekly change	1.4%		-16.0%				0.2%	-0.9%	-0.5%	11.7%			20.9%			17.7%	3.3%	5.3%	-28.9%			-21.3%	-3.2%	-0.4%	
	<b>SALES</b>		<b>SALES</b>			<b>SALES</b>	<b>SALES</b>	<b>SALES</b>	<b>SALES</b>	<b>SALES</b>			<b>SALES</b>			<b>SALES</b>	<b>SALES</b>	<b>SALES</b>	<b>SALES</b>			<b>SALES</b>	<b>SALES</b>	<b>% of Sales</b>	
Calendar Year to date	2,741,554,233		117,047,677			9,431,853	223,967,971	4,263,160	46,242,878	49,557,163			99,848,214			22,622,864	65,861,541	4,134,598	242,982,287			26,388,161	40,648,387	3,694,550,986	100.0%
Fiscal Year to date 2014	537,554,970		23,770,935			2,971,948	43,434,421	863,132	9,098,142	9,144,053			23,326,022			5,145,898	14,117,379	874,112	47,668,117			5,306,092	8,467,814	731,744,033	100.0%