



WEEKLY SALES SUMMARY

Unaudited

[Week Ending: 11/03/2012](#)

Texas Lottery Commission
Fiscal Year to Date Sales Comparison
Unaudited

Through the week ending 11/03/2012 (10 weeks)

Sales by Game	FY 2011 *	FY 2012 **	FY 2013	\$ Change		% Change	
				FY 2013 to FY 2011	FY 2013 to FY 2012	FY 2013 to FY 2011	FY 2013 to FY 2012
Instants	\$ 481,463,003	\$ 493,357,725	\$ 519,298,663	\$ 37,835,660	\$ 25,940,938	7.9%	5.3%
Lotto Texas	31,692,531	31,188,913	29,167,636	-2,524,895	-2,021,277	-8.0%	-6.5%
Pick 3	49,737,484	47,004,913	45,882,707	-3,854,777	-1,122,206	-7.8%	-2.4%
Pick 3 Sum It Up	1,011,636	950,611	874,191	-137,445	-76,420	-13.6%	-8.0%
Cash Five	11,731,755	11,538,838	10,086,322	-1,645,433	-1,452,516	-14.0%	-12.6%
Texas Two Step	8,078,782	12,018,851	9,564,008	1,485,226	-2,454,843	18.4%	-20.4%
Mega Millions	24,697,838	25,529,263	19,656,368	-5,041,470	-5,872,895	-20.4%	-23.0%
Megaplier	5,509,694	5,798,930	4,511,967	-997,727	-1,286,963	-18.1%	-22.2%
Daily 4	10,252,790	10,926,708	12,130,713	1,877,923	1,204,005	18.3%	11.0%
Daily 4 Sum It Up	802,787	824,829	825,685	22,898	857	2.9%	0.1%
Powerball	16,405,618	26,136,396	28,498,181	12,092,563	2,361,785	73.7%	9.0%
Power Play	3,887,984	5,482,218	3,607,176	-280,808	-1,875,042	-7.2%	-34.2%
All or Nothing	-	-	17,788,773	17,788,773	17,788,773	-	-
Total	\$ 645,271,901	\$ 670,758,194	\$ 701,892,390	\$ 56,620,489	\$ 31,134,196	8.8%	4.6%

* 3 extra days

** 2 extra days

Texas Lottery Commission
Fiscal Year to Date Cumulative Average Sales Comparison
Unaudited

Through the week ending 11/03/2012 (10 weeks)

Sales by Game	FY 2011	FY 2012	FY 2013
Instant	\$ 7,186,015	\$ 7,475,117	\$ 8,114,042
Lotto Texas	473,023	472,559	455,744
Pick 3	742,351	712,196	716,917
Pick 3 Sum It Up	15,099	14,403	13,659
Cash Five	175,101	174,831	157,599
Texas Two Step	120,579	182,104	149,438
Mega Millions	368,624	386,807	307,131
Megaplier	82,234	87,863	70,499
Daily 4	153,027	165,556	189,542
Daily 4 Sum It Up	11,982	12,497	12,901
Powerball	244,860	396,006	445,284
Power Play	58,030	83,064	56,362
All or Nothing	-	-	317,657 *
Total	\$ <u>9,630,924</u>	\$ <u>10,163,003</u>	\$ <u>11,006,776</u>
	thru 11/06/2010 67 days	thru 11/05/2011 66 days	thru 11/03/2012 64 days * 56 days

Texas Lottery Commission
Fiscal Year Over Year Change in Sales
Unaudited
FY 2013 Compared to FY 2012

Week	FY 2013 Week Ending	INSTANT TICKETS				DRAW GAMES				TOTAL SALES			
		FY 2013	FY 2012	Difference	% change - Cumulative Sales	FY 2013	FY 2012	Difference	% change - Cumulative Sales	FY 2013	FY 2012	Difference	% change - Cumulative Sales
1	9/1/2012**	\$9,611,328	\$25,147,181	(\$15,535,853)	-61.8%	\$3,712,535	\$9,704,561	(\$5,992,026)	-61.7%	\$13,323,863	\$34,851,742	(\$21,527,879)	-61.8%
2	9/8/2012	\$56,941,761	\$50,591,068	\$6,350,693	12.6%	\$19,305,417	\$17,681,853	\$1,623,564	9.2%	\$76,247,178	\$68,272,921	\$7,974,257	11.7%
3	9/15/2012	\$56,302,875	\$49,835,063	\$6,467,812	13.0%	\$20,857,230	\$16,842,326	\$4,014,904	23.8%	\$77,160,105	\$66,677,389	\$10,482,716	15.7%
4	9/22/2012	\$54,974,438	\$49,777,138	\$5,197,300	10.4%	\$20,570,277	\$17,504,800	\$3,065,477	17.5%	\$75,544,715	\$67,281,938	\$8,262,777	12.3%
5	9/29/2012	\$54,606,674	\$51,040,274	\$3,566,400	7.0%	\$20,462,690	\$18,653,100	\$1,809,591	9.7%	\$75,069,364	\$69,693,374	\$5,375,991	7.7%
6	10/6/2012	\$59,223,327	\$53,715,157	\$5,508,170	10.3%	\$19,279,973	\$17,225,680	\$2,054,293	11.9%	\$78,503,300	\$70,940,837	\$7,562,463	10.7%
7	10/13/2012	\$57,075,606	\$51,942,121	\$5,133,485	9.9%	\$18,638,467	\$17,854,980	\$783,487	4.4%	\$75,714,073	\$69,797,101	\$5,916,972	8.5%
8	10/20/2012	\$56,630,134	\$52,837,769	\$3,792,365	7.2%	\$18,998,943	\$19,558,519	(\$559,577)	-2.9%	\$75,629,077	\$72,396,288	\$3,232,789	4.5%
9	10/27/2012	\$55,789,743	\$52,206,644	\$3,583,099	6.9%	\$20,130,190	\$21,504,565	(\$1,374,376)	-6.4%	\$75,919,933	\$73,711,209	\$2,208,724	3.0%
10	11/3/2012	\$58,142,777	\$56,265,310	\$1,877,467	3.3%	\$20,638,008	\$20,870,086	(\$232,079)	-1.1%	\$78,780,785	\$77,135,396	\$1,645,389	2.1%
11	11/10/2012		\$55,682,645				\$17,862,404				\$73,545,049		
12	11/17/2012		\$54,978,079				\$17,879,985				\$72,858,064		
13	11/24/2012		\$53,942,448				\$16,877,145				\$70,819,593		
14	12/1/2012		\$57,153,469				\$18,298,636				\$75,452,105		
15	12/8/2012		\$55,318,284				\$19,033,326				\$74,351,610		
16	12/15/2012		\$58,612,629				\$20,045,279				\$78,657,908		
17	12/22/2012		\$60,628,256				\$22,572,986				\$83,201,242		
18	12/29/2012		\$63,065,007				\$19,948,521				\$83,013,528		
19	1/5/2013		\$60,479,896				\$17,331,888				\$77,811,784		
20	1/12/2013		\$57,689,526				\$17,568,732				\$75,258,258		
21	1/19/2013		\$58,704,854				\$19,886,540				\$78,591,394		
22	1/26/2013		\$57,611,325				\$20,641,697				\$78,253,022		
23	2/2/2013		\$65,553,366				\$23,689,855				\$89,243,221		
24	2/9/2013		\$75,070,485				\$28,361,583				\$103,432,068		
25	2/16/2013		\$66,679,947				\$19,588,615				\$86,268,562		
26	2/23/2013		\$64,868,899				\$19,965,388				\$84,834,287		
27	3/2/2013		\$67,135,065				\$20,947,181				\$88,082,246		
28	3/9/2013		\$68,299,006				\$22,152,639				\$90,451,645		
29	3/16/2013		\$65,013,692				\$23,351,718				\$88,365,410		
30	3/23/2013		\$64,035,255				\$27,416,609				\$91,451,864		
31	3/30/2013		\$65,135,991				\$84,628,987				\$149,764,978		
32	4/6/2013		\$66,860,957				\$19,899,400				\$86,760,357		
33	4/13/2013		\$64,028,898				\$20,220,141				\$84,249,039		
34	4/20/2013		\$63,623,892				\$20,974,282				\$84,598,174		
35	4/27/2013		\$61,743,623				\$20,267,388				\$82,011,011		
36	5/4/2013		\$64,851,962				\$20,642,982				\$85,494,944		
37	5/11/2013		\$65,472,556				\$19,140,768				\$84,613,324		
38	5/18/2013		\$60,572,658				\$18,342,814				\$78,915,472		
39	5/25/2013		\$58,959,028				\$18,618,060				\$77,577,088		
40	6/1/2013		\$57,409,086				\$19,014,645				\$76,423,731		
41	6/8/2013		\$59,845,545				\$20,527,958				\$80,373,503		
42	6/15/2013		\$57,021,498				\$19,386,186				\$76,407,684		

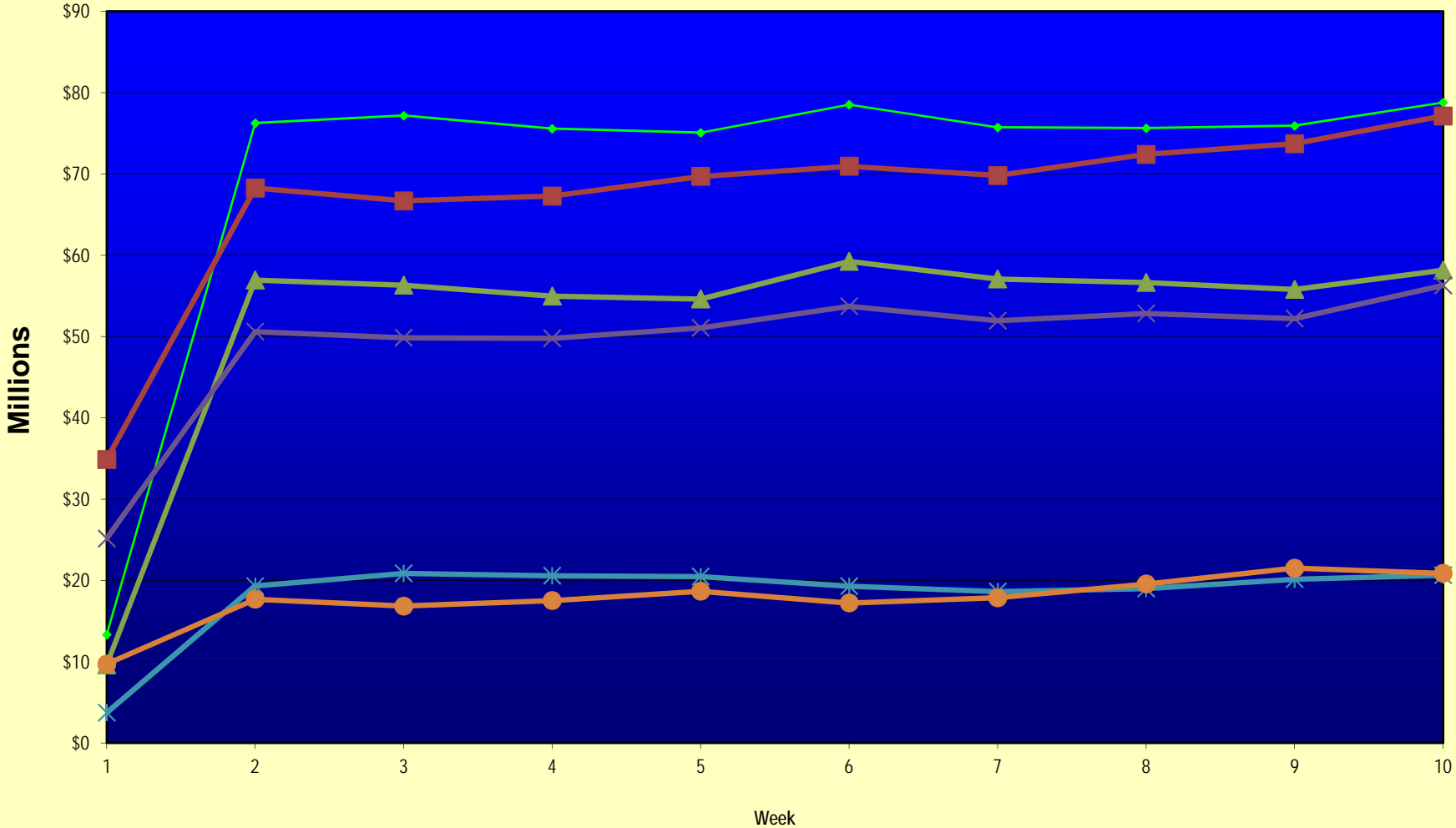
Note: Week 1 is not a full week of sales as this report is prepared on a Fiscal Year basis.

Texas Lottery Commission
Fiscal Year Over Year Change in Sales
Unaudited
FY 2013 Compared to FY 2012

Week	FY 2013 Week Ending	INSTANT TICKETS				DRAW GAMES				TOTAL SALES			
		FY 2013	FY 2012	Difference	% change - Cumulative Sales	FY 2013	FY 2012	Difference	% change - Cumulative Sales	FY 2013	FY 2012	Difference	% change - Cumulative Sales
43	6/22/2013		\$57,892,076				\$17,594,154				\$75,486,230		
44	6/29/2013		\$57,497,435				\$18,153,658				\$75,651,093		
45	7/6/2013		\$60,345,000				\$19,059,152				\$79,404,152		
46	7/13/2013		\$57,683,321				\$18,751,043				\$76,434,364		
47	7/20/2013		\$57,083,343				\$18,769,201				\$75,852,544		
48	7/27/2013		\$54,006,781				\$18,934,103				\$72,940,884		
49	8/3/2013		\$56,557,409				\$20,206,705				\$76,764,114		
50	8/10/2013		\$57,799,452				\$22,832,120				\$80,631,572		
51	8/17/2013		\$54,845,724				\$25,435,624				\$80,281,348		
52	8/24/2013		\$55,661,277				\$17,524,474				\$73,185,751		
	8/31/2013		\$47,363,984				\$14,929,528				\$62,293,512		
Total thru Current Week		\$519,298,663	\$493,357,725	\$25,940,938	5.3%	\$182,593,727	\$177,400,469	\$5,193,258	2.9%	\$701,892,390	\$670,758,194	\$31,134,196	4.6%
Fiscal Year Total		\$519,298,663	\$3,086,141,354			\$182,593,727	\$1,104,674,559			\$701,892,390	\$4,190,815,913		

** FY 2012 includes 3 days; FY 2013 includes 1 day.

Texas Lottery Commission Fiscal Year Over Year Change in Sales



Note: Week 1 is not a full week of sales as this report is prepared on a Fiscal Year basis.

Texas Lottery Commission
Instant Tickets by Price Point
Sales, Prize Expense, Sales Contribution and Payout Percentage With Year Over Year Changes
Unaudited

Fiscal Year	Price Point	# of Active Games	FY Sales	% of Instant Ticket Sales	Year over Year Change in Sales	FY Prize Expense	Year over Year Change in Prize Expense	FY Sales Contribution	Year over Year Change in Contribution	Average Prize Payout %	Year over Year Change in Payout %
2012	\$1.00	23	35,028,593	7.1%		21,268,378		13,760,215		60.7%	-0.1%
thru	\$2.00	24	68,645,946	13.9%		44,650,714		23,995,232		65.0%	-0.8%
11/5/2011	\$3.00	13	61,007,727	12.4%		40,034,839		20,972,888		65.6%	0.0%
	\$5.00	29	151,823,655	30.8%		103,236,259		48,587,396		68.0%	0.1%
	\$7.00	4	13,715,394	2.8%		9,326,358		4,389,036		68.0%	0.0%
	\$10.00	13	80,166,440	16.2%		56,536,490		23,629,950		70.5%	-0.7%
	\$20.00	5	69,020,120	14.0%		51,468,793		17,551,327		74.6%	-0.1%
	\$50.00	1	13,949,850	2.8%		10,835,002		3,114,848		77.7%	0.1%
Total		112	\$493,357,725			\$337,356,834		\$156,000,891		68.4%	-0.2%
2013	\$1.00	23	30,599,535	5.9%		18,538,384		12,061,151		60.6%	-0.1%
thru	\$2.00	25	65,262,228	12.6%		42,433,360		22,828,868		65.0%	-0.1%
11/3/2012	\$3.00	13	67,818,447	13.1%		44,478,801		23,339,646		65.6%	0.1%
	\$5.00	39	159,283,840	30.7%		108,118,946		51,164,894		67.9%	-0.2%
	\$7.00	2	9,987,383	1.9%		6,788,087		3,199,296		68.0%	0.0%
	\$10.00	11	85,167,040	16.4%		60,236,120		24,930,920		70.7%	-0.2%
	\$20.00	7	80,991,140	15.6%		60,617,922		20,373,218		74.8%	0.1%
	\$50.00	2	20,189,050	3.9%		15,675,778		4,513,272		77.6%	0.0%
Total		122	\$519,298,663			\$356,887,398		\$162,411,265		68.7%	0.2%
Variance	\$1.00	0	-4,429,058		-12.6%	-2,729,994	-12.8%	-1,699,064	-12.3%	-0.13%	
2013 to	\$2.00	1	-3,383,718		-4.9%	-2,217,354	-5.0%	-1,166,364	-4.9%	-0.03%	
2012	\$3.00	0	6,810,720		11.2%	4,443,962	11.1%	2,366,758	11.3%	-0.04%	
	\$5.00	10	7,460,185		4.9%	4,882,687	4.7%	2,577,498	5.3%	-0.12%	
	\$7.00	-2	-3,728,011		-27.2%	-2,538,271	-27.2%	-1,189,740	-27.1%	-0.03%	
	\$10.00	-2	5,000,600		6.2%	3,699,630	6.5%	1,300,970	5.5%	0.20%	
	\$20.00	2	11,971,020		17.3%	9,149,129	17.8%	2,821,891	16.1%	0.27%	
	\$50.00	1	6,239,200		44.7%	4,840,776	44.7%	1,398,424	44.9%	-0.03%	
Total		10	\$25,940,938		5.3%	\$19,530,565	5.8%	\$6,410,373	4.1%	0.35%	

Notes - Instant Ticket Variances

Texas Lottery Commission
Instant Tickets by Price Point
Sales, Prize Expense, Sales Contribution and Payout Percentage With Year Over Year Changes
 Unaudited

			FY 2013		FY 2012	Difference
Sales	\$1 - \$7		\$332,951,433		\$330,221,315	\$2,730,118
Prize Exp.	\$1 - \$7		\$220,357,578		\$218,516,548	\$1,841,030
Sales Cont.	\$1 - \$7		\$112,593,855		\$111,704,767	\$889,088
Prize Exp. %	\$1 - \$7		66.2%		66.2%	0.0%
			FY 2013		FY 2012	Difference
Sales	\$10 - \$50		\$186,347,230		\$163,136,410	\$23,210,820
Prize Exp.	\$10 - \$50		\$136,529,820		\$118,840,286	\$17,689,534
Sales Cont.	\$10 - \$50		\$49,817,410		\$44,296,125	\$5,521,286
Prize Exp. %	\$10 - \$50		73.3%		72.8%	0.4%
			FY 2013		FY 2012	Difference
Sales	Instant		\$519,298,663		\$493,357,725	\$25,940,938
Prize Exp.	Instant		\$356,887,398		\$337,356,834	\$19,530,565
Sales Cont.	Instant		\$162,411,265		\$156,000,891	\$6,410,373
Prize Exp. %	Instant		68.7%		68.4%	0.3%

			FY 2013		FY 2012	Difference
Sales	\$1 - \$10		\$418,118,473		\$410,387,755	\$7,730,718
Prize Exp.	\$1 - \$10		\$280,593,698		\$275,053,038	\$5,540,660
Sales Cont.	\$1 - \$10		\$137,524,775		\$135,334,717	\$2,190,058
Prize Exp. %	\$1 - \$10		67.1%		67.0%	0.1%
			FY 2013		FY 2012	Difference
Sales	\$20 - \$50		\$101,180,190		\$82,969,970	\$18,210,220
Prize Exp.	\$20 - \$50		\$76,293,700		\$62,303,796	\$13,989,904
Sales Cont.	\$20 - \$50		\$24,886,490		\$20,666,174	\$4,220,316
Prize Exp. %	\$20 - \$50		75.4%		75.1%	0.3%
			FY 2013		FY 2012	Difference
Sales	Instant		\$519,298,663		\$493,357,725	\$25,940,938
Prize Exp.	Instant		\$356,887,398		\$337,356,834	\$19,530,565
Sales Cont.	Instant		\$162,411,265		\$156,000,891	\$6,410,373
Prize Exp. %	Instant		68.7%		68.4%	0.3%

Texas Lottery Commission
Weekly Sales Summary
& Comparison to Previous Week
 Unaudited

	Week Ending 11/03/2012		Week Ending 10/27/2012			
	<u>THIS WEEK</u>	% of Sales	<u>LAST WEEK</u>	% of Sales	<u>\$ change</u>	<u>% change</u>
Total Sales	<u>\$78,780,785</u>		<u>\$75,919,933</u>		<u>\$2,860,852</u>	3.77%
Instant Tickets	<u>\$58,142,777</u>	73.8%	<u>\$55,789,743</u>	73.5%	<u>\$2,353,034</u>	4.22%
Lotto	\$3,392,650	4.3%	\$3,204,694	4.2%	\$187,956	5.87%
Pick 3	\$5,501,964	7.0%	\$5,550,567	7.3%	-\$48,603	-0.88%
Pick 3 Sum It Up	\$101,742	0.1%	\$96,242	0.1%	\$5,501	5.72%
Cash Five	\$1,078,593	1.4%	\$1,063,201	1.4%	\$15,392	1.45%
Texas Two Step	\$860,073	1.1%	\$1,226,578	1.6%	-\$366,505	-29.88%
Mega Millions	\$1,950,117	2.5%	\$1,778,725	2.3%	\$171,392	9.64%
Megaplier	\$462,385	0.6%	\$430,528	0.6%	\$31,857	7.40%
Daily 4	\$1,393,099	1.8%	\$1,381,019	1.8%	\$12,081	0.87%
Daily 4 Sum It Up	\$93,773	0.1%	\$91,618	0.1%	\$2,155	2.35%
Powerball	\$3,466,242	4.4%	\$2,914,062	3.8%	\$552,180	18.95%
Power Play	\$424,170	0.5%	\$371,273	0.5%	\$52,897	14.25%
All or Nothing	\$1,913,200	2.4%	\$2,021,684	2.7%	-\$108,484	-5.37%
Total Draw Game Sales	<u>\$20,638,008</u>		<u>\$20,130,190</u>		<u>\$507,818</u>	2.52%

* Totals may not sum due to rounding.

Texas Lottery Commission
Weekly Sales Summary
Unaudited

INSTANT TICKETS
TOP TEN SELLING GAMES

For the Week Ending: 11/03/12

Rank	Price Point	Game	Sales (Millions)
1	\$ 10	HOLIDAY DOUBLER	\$ 3.298
2	\$ 20	MERRY MILLIONS	\$ 3.049
3	\$ 20	\$500 MILLION EXTREME CASH BLAST	\$ 2.861
4	\$ 5	NUTCRACKER CASH	\$ 2.381
5	\$ 3	BONUS CASHWORD	\$ 2.140
6	\$ 10	\$200 MILLION CASH SPECTACULAR	\$ 2.079
7	\$ 5	RUBY 7'S	\$ 1.984
8	\$ 3	LOTERIA	\$ 1.980
9	\$ 5	10X THE MONEY	\$ 1.899
10	\$ 50	CASINO ACTION	\$ 1.749

Texas Lottery Commission
Prize Payout Tracking Report
Unaudited

Through Week Ending 11/03/12

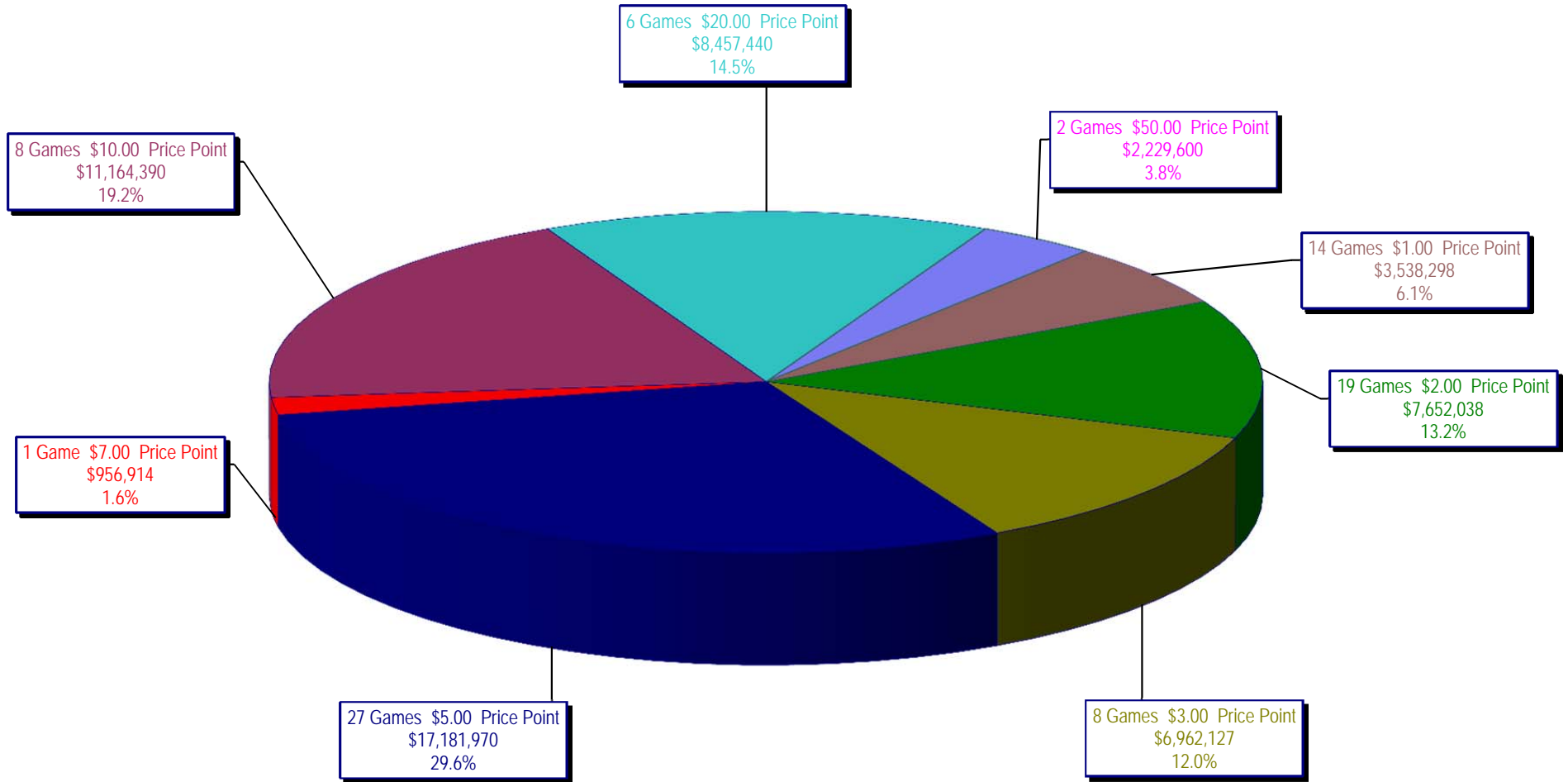
Draw Game Sales

		FY Sales Through Week Ending 11/3/2012		FY Prize Expense Through Week Ending 11/3/2012	Actual* Prize Payout	Base Payout (Prize Pool)
Lotto	\$	29,167,636	\$	14,585,510	50.01%	50.00%
Pick 3		45,882,707		28,445,810	62.00%	50.00%
Pick 3 Sum It Up		874,191		432,777	49.51%	50.00%
Cash Five		10,086,322		5,044,483	50.01%	50.00%
Texas Two Step		9,564,008		4,770,117	49.88%	50.00%
Mega Millions		19,656,368		9,487,471	48.27%	50.00%**
Megaplier		4,511,967		2,229,708	49.42%	N/A
Daily 4		12,130,713		5,116,525	42.18%	50.00%
Daily 4 Sum It Up		825,685		328,818	39.82%	50.00%
Powerball		28,498,181		14,738,337	51.72%	50.00%**
Power Play		3,607,176		1,624,232	45.03%	N/A
All or Nothing		17,788,773		10,871,192	61.11%	50.00%
Totals	\$	182,593,727	\$	97,674,979	53.49%	

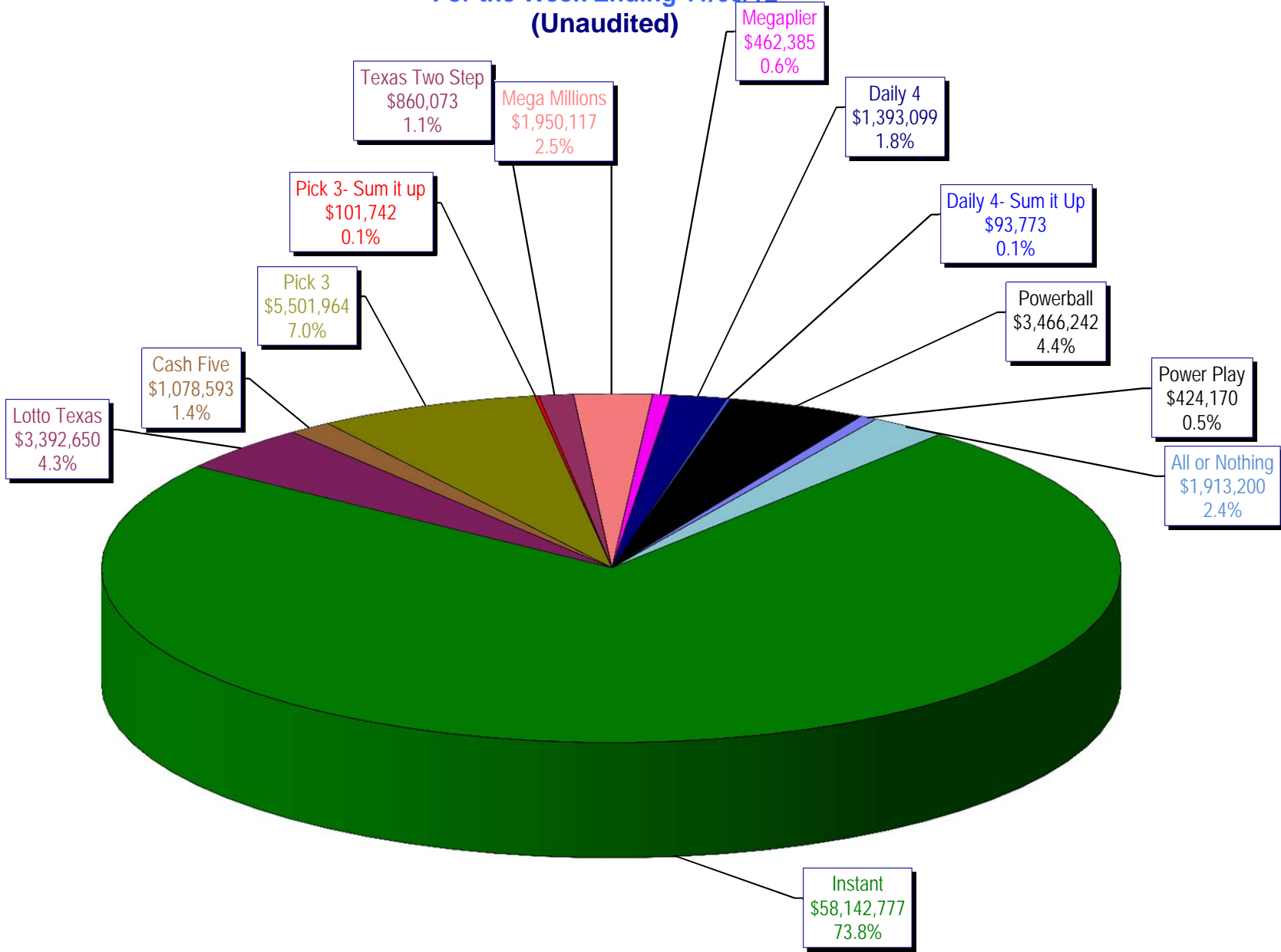
* Before Unclaimed Prizes

** Estimated; depends on # of guaranteed prizes won in Texas

Texas Lottery Commission
Instant Ticket Sales
For the Week Ending 11/03/12
(Unaudited)



**Texas Lottery Commission
All Game Sales
For the Week Ending 11/03/12
(Unaudited)**



Texas Lottery Commission - Weekly Sales Summary for FY 2013 (Unaudited)

Week Ended	Instant Games	New Games & Dates	Lotto Texas	Jackpot W S	Pick 3	Pick 3 Sum It Up	Cash Five	Texas Two Step	Jackpot M TH	Mega Millions	Jackpot T F	Megaplier	Daily 4	Daily 4 Sum It Up	Powerball	Jackpot W S	Power Play	All or Nothing	Total	Per Cap.
9/1/2012	56,975,312	1446 (\$1, N); 1444 (\$2, N) - 08/27/12	2,972,415	12 13	4,967,337	105,441	1,198,597	1,455,689	500 675	2,769,421	73 83	612,072	1,419,103	97,265	2,680,694	70 80	364,030		75,617,375	2.95
9/8/2012	56,941,761	1440 (\$2, N); 1458 (\$3, N); 1459 (\$5, N) - 09/03/12	3,005,564	14 15	5,112,132	106,959	1,185,494	1,179,003	875 200	3,140,536	93 105	665,392	1,412,279	99,861	3,002,910	90 100	395,287		76,247,178	2.97
9/15/2012	56,302,875	1452 (\$3, N) - 09/10/12	2,999,894	16 17	4,785,209	95,720	1,118,519	894,412	225 200	2,684,227	120 12	580,869	1,290,478	90,795	3,373,296	110 125	417,470	2,526,342	77,160,105	3.01
9/22/2012	54,974,438	1460 (\$1, N); 1461 (\$5, N) - 09/17/12	2,986,898	18 19	4,611,684	89,173	1,091,440	986,264	225 325	1,874,336	15 12	452,082	1,258,191	86,390	4,122,790	149 174	479,344	2,531,686	75,544,715	2.94
9/29/2012	54,606,674	1462 (\$2, N); 1472 (\$10, N) - 09/24/12	3,047,519	20 21	4,708,250	90,752	1,077,739	1,313,257	475 625	1,884,366	14 21	452,334	1,278,847	87,211	3,779,359	200 40	445,091	2,297,966	75,069,364	2.92
10/6/2012	59,223,327	1464 (\$5, N) - 10/01/12	3,164,231	22 23	4,947,571	96,251	1,121,146	1,188,386	800 200	2,055,918	28 36	482,303	1,310,612	89,270	2,266,428	50 40	312,877	2,244,980	78,503,300	3.06
10/13/2012	57,075,606	1465 (\$1, N); 1466 (\$20, N) - 10/08/2012	3,133,742	24 25	4,793,793	89,663	1,074,687	865,146	225 200	2,163,099	45 53	492,614	1,261,858	84,585	2,241,120	50 60	309,684	2,128,476	75,714,073	2.95
10/20/2012	56,630,134	1467 (\$1, N); 1468 (\$5, N) - 10/15/12	3,172,820	26 27	4,959,071	88,413	1,074,980	970,100	225 325	1,984,966	61 12	466,730	1,296,602	84,868	2,447,518	70 80	328,436	2,124,439	75,629,077	2.95
10/27/2012	55,789,743	1469 (\$2, N); 1470 (\$10, N) - 10/22/2012	3,204,694	28 29	5,550,567	96,242	1,063,201	1,226,578	450 600	1,778,725	13 21	430,528	1,381,019	91,618	2,914,062	90 100	371,273	2,021,684	75,919,933	2.96
11/3/2012	58,142,777	1503 (\$5, N) - 10/29/2012	3,392,650	30 31	5,501,964	101,742	1,078,593	860,073	200 225	1,950,117	27 32	462,385	1,393,099	93,773	3,466,242	110 124	424,170	1,913,200	78,780,785	3.07
weekly change	4.2%		5.9%		-0.9%	5.7%	1.4%	-29.9%		9.6%		7.4%	0.9%	2.4%	18.9%		14.2%	-5.4%	3.8%	
	SALES		SALES		SALES	SALES	SALES	SALES		SALES		SALES	SALES	SALES	SALES		SALES		SALES	% of Sales
Calendar Year to date	2,652,701,475		139,913,473		231,365,315	4,763,125	54,154,441	54,043,830		177,780,810		34,021,315	59,771,397	4,180,512	158,961,273		20,605,275	17,788,773	3,610,051,012	100.0%
Fiscal Year to date 2013	519,298,663		29,167,636		45,882,707	874,191	10,086,322	9,564,008		19,656,368		4,511,967	12,130,713	825,685	28,498,181		3,607,176	17,788,773	701,892,390	100.0%