



WEEKLY SALES SUMMARY

Unaudited

Week Ending: 11/05/2016

Texas Lottery Commission
Fiscal Year to Date Sales Comparison
Unaudited

Through the Week Ending 11/05/2016 (10 Weeks)

Sales by Game	FY 2015 *	FY 2016 **	FY 2017	\$ Change		% Change	
				FY 2017 to FY 2015	FY 2017 to FY 2016	FY 2017 to FY 2015	FY 2017 to FY 2016
Scratch Tickets	\$ 611,896,735	\$ 632,784,314	\$ 650,403,729	\$ 38,506,994	\$ 17,619,415	6.3%	2.8%
Lotto Texas	22,933,072	24,788,283	20,748,978	-2,184,094	-4,039,305	-9.5%	-16.3%
Lotto Extra	3,453,753	4,157,887	3,933,931	480,178	-223,956	13.9%	-5.4%
Pick 3	47,190,758	47,296,734	44,336,297	-2,854,462	-2,960,437	-6.0%	-6.3%
Pick 3 Sum It Up	910,467	963,546	848,873	-61,594	-114,673	-6.8%	-11.9%
Cash Five	9,456,527	8,836,595	7,957,115	-1,499,412	-879,480	-15.9%	-10.0%
Texas Two Step	10,679,983	10,253,358	9,414,139	-1,265,844	-839,219	-11.9%	-8.2%
Mega Millions	34,053,693	23,651,091	19,035,555	-15,018,138	-4,615,536	-44.1%	-19.5%
Megaplier	7,549,365	5,906,334	5,228,699	-2,320,666	-677,635	-30.7%	-11.5%
Daily 4	15,696,373	16,082,203	16,384,528	688,155	302,325	4.4%	1.9%
Daily 4 Sum It Up	957,770	833,433	860,233	-97,537	26,801	-10.2%	3.2%
Powerball	36,550,187	41,413,966	36,852,536	302,349	-4,561,430	0.8%	-11.0%
Power Play	4,675,947	5,303,494	5,287,915	611,968	-15,579	13.1%	-0.3%
All or Nothing	7,607,292	6,016,408	5,281,050	-2,326,242	-735,358	-30.6%	-12.2%
Monopoly	1,201,750	-	-	-1,201,750	-	-100.0%	-
Texas Triple Chance	-	4,568,003	2,966,382	2,966,382	-1,601,621	-	-35.1%
Total	\$ 814,813,672	\$ 832,855,648	\$ 829,539,959	\$ 14,726,288	\$ -3,315,689	1.8%	-0.4%

* 3 extra days

** 2 extra days

Texas Lottery Commission
Fiscal Year to Date Cumulative Average Sales Comparison
Unaudited

Through the Week Ending 11/05/2016 (10 Weeks)

Sales by Game	FY 2015	FY 2016	FY 2017
Scratch Tickets	\$ 8,868,069	\$ 9,305,652	\$ 9,854,602
Lotto Texas	332,363	364,534	314,378
Lotto Extra	50,054	61,145	59,605
Pick 3	683,924	695,540	671,762
Pick 3 Sum It Up	13,195	14,170	12,862
Cash Five	137,051	129,950	120,562
Texas Two Step	154,782	150,785	142,638
Mega Millions	493,532	347,810	288,418
Megaplier	109,411	86,858	79,223
Daily 4	227,484	236,503	248,250
Daily 4 Sum It Up	13,881	12,256	13,034
Powerball	529,713	609,029	558,372
Power Play	67,767	77,993	80,120
All or Nothing	110,251	88,477	80,016
Monopoly	** 57,226	-	-
Texas Triple Chance	- *	108,762	44,945
Total	\$ 11,848,703	\$ 12,289,463	\$ 12,568,787

thru 11/08/2014

thru 11/07/2015

thru 11/05/2016

69 days

68 days

66 days

** 21 days

* 42 days

Texas Lottery Commission
Fiscal Year Over Year Change in Sales
Unaudited
FY 2017 Compared to FY 2016

			SCRATCH TICKETS				DRAW GAMES				TOTAL SALES			
FY 2017			FY 2017	FY 2016	Difference	% change - Cumulative Sales	FY 2017	FY 2016	Difference	% change - Cumulative Sales	FY 2017	FY 2016	Difference	% change - Cumulative Sales
Week	Week	Ending												
1	9/3/2016 *		\$32,980,266	\$49,534,249	(\$16,553,983)	-33.4%	\$10,218,656	\$17,091,724	(\$6,873,068)	-40.2%	\$43,198,922	\$66,625,973	(\$23,427,051)	-35.2%
2	9/10/2016		\$65,952,418	\$61,566,291	\$4,386,127	7.1%	\$19,635,377	\$20,630,922	(\$995,545)	-4.8%	\$85,587,795	\$82,197,213	\$3,390,583	4.1%
3	9/17/2016		\$66,196,270	\$63,530,657	\$2,665,613	4.2%	\$20,915,290	\$20,327,253	\$588,037	2.9%	\$87,111,560	\$83,857,910	\$3,253,650	3.9%
4	9/24/2016		\$64,383,005	\$61,731,400	\$2,651,605	4.3%	\$17,451,165	\$22,252,290	(\$4,801,125)	-21.6%	\$81,834,170	\$83,983,690	(\$2,149,520)	-2.6%
5	10/1/2016		\$67,349,951	\$67,048,415	\$301,536	0.4%	\$17,519,852	\$25,436,791	(\$7,916,939)	-31.1%	\$84,869,803	\$92,485,206	(\$7,615,403)	-8.2%
6	10/8/2016		\$71,598,690	\$66,049,706	\$5,548,984	8.4%	\$18,211,107	\$18,138,977	\$72,130	0.4%	\$89,809,797	\$84,188,683	\$5,621,114	6.7%
7	10/15/2016		\$69,444,762	\$65,073,593	\$4,371,169	6.7%	\$18,075,261	\$17,776,414	\$298,847	1.7%	\$87,520,023	\$82,850,007	\$4,670,016	5.6%
8	10/22/2016		\$69,317,066	\$64,087,437	\$5,229,629	8.2%	\$18,422,336	\$18,450,464	(\$28,128)	-0.2%	\$87,739,402	\$82,537,901	\$5,201,501	6.3%
9	10/29/2016		\$69,729,599	\$66,025,374	\$3,704,225	5.6%	\$18,535,248	\$19,568,150	(\$1,032,902)	-5.3%	\$88,264,847	\$85,593,524	\$2,671,324	3.1%
10	11/5/2016		\$73,451,702	\$68,137,192	\$5,314,510	7.8%	\$20,151,939	\$20,398,351	(\$246,413)	-1.2%	\$93,603,641	\$88,535,543	\$5,068,098	5.7%
11	11/12/2016			\$65,449,428				\$20,169,382				\$85,618,810		
12	11/19/2016			\$68,364,421				\$17,174,606				\$85,539,027		
13	11/26/2016			\$61,091,628				\$17,168,993				\$78,260,621		
14	12/3/2016			\$67,830,827				\$19,252,418				\$87,083,245		
15	12/10/2016			\$68,324,452				\$19,529,408				\$87,853,860		
16	12/17/2016			\$71,041,258				\$20,824,840				\$91,866,098		
17	12/24/2016			\$78,125,965				\$22,586,417				\$100,712,382		
18	12/31/2016			\$76,712,975				\$27,972,880				\$104,685,855		
19	1/7/2017			\$77,136,541				\$127,289,478				\$204,426,019		
20	1/14/2017			\$73,858,865				\$140,104,126				\$213,962,991		
21	1/21/2017			\$70,665,700				\$20,781,745				\$91,447,445		
22	1/28/2017			\$71,051,685				\$20,433,401				\$91,485,086		
23	2/4/2017			\$78,458,428				\$21,274,800				\$99,733,228		
24	2/11/2017			\$80,754,850				\$21,391,919				\$102,146,769		
25	2/18/2017			\$80,078,271				\$21,911,382				\$101,989,653		
26	2/25/2017			\$78,832,217				\$22,823,086				\$101,655,303		
27	3/4/2017			\$80,019,524				\$23,146,906				\$103,166,430		
28	3/11/2017			\$78,524,214				\$19,311,625				\$97,835,839		
29	3/18/2017			\$75,446,960				\$18,001,000				\$93,447,960		
30	3/25/2017			\$75,293,759				\$18,553,964				\$93,847,723		
31	4/1/2017			\$79,316,221				\$19,482,563				\$98,798,784		
32	4/8/2017			\$74,560,898				\$20,100,629				\$94,661,527		
33	4/15/2017			\$74,056,586				\$20,677,413				\$94,733,999		
34	4/22/2017			\$73,110,080				\$20,313,339				\$93,423,419		
35	4/29/2017			\$73,448,019				\$22,666,626				\$96,114,645		
36	5/6/2017			\$77,593,399				\$33,262,968				\$110,856,367		
37	5/13/2017			\$75,263,676				\$20,250,149				\$95,513,825		
38	5/20/2017			\$74,274,808				\$19,605,983				\$93,880,791		
39	5/27/2017			\$71,562,728				\$20,150,232				\$91,712,960		
40	6/3/2017			\$73,085,109				\$21,067,550				\$94,152,659		
41	6/10/2017			\$70,593,768				\$21,389,794				\$91,983,562		
42	6/17/2017			\$69,501,864				\$22,402,713				\$91,904,577		

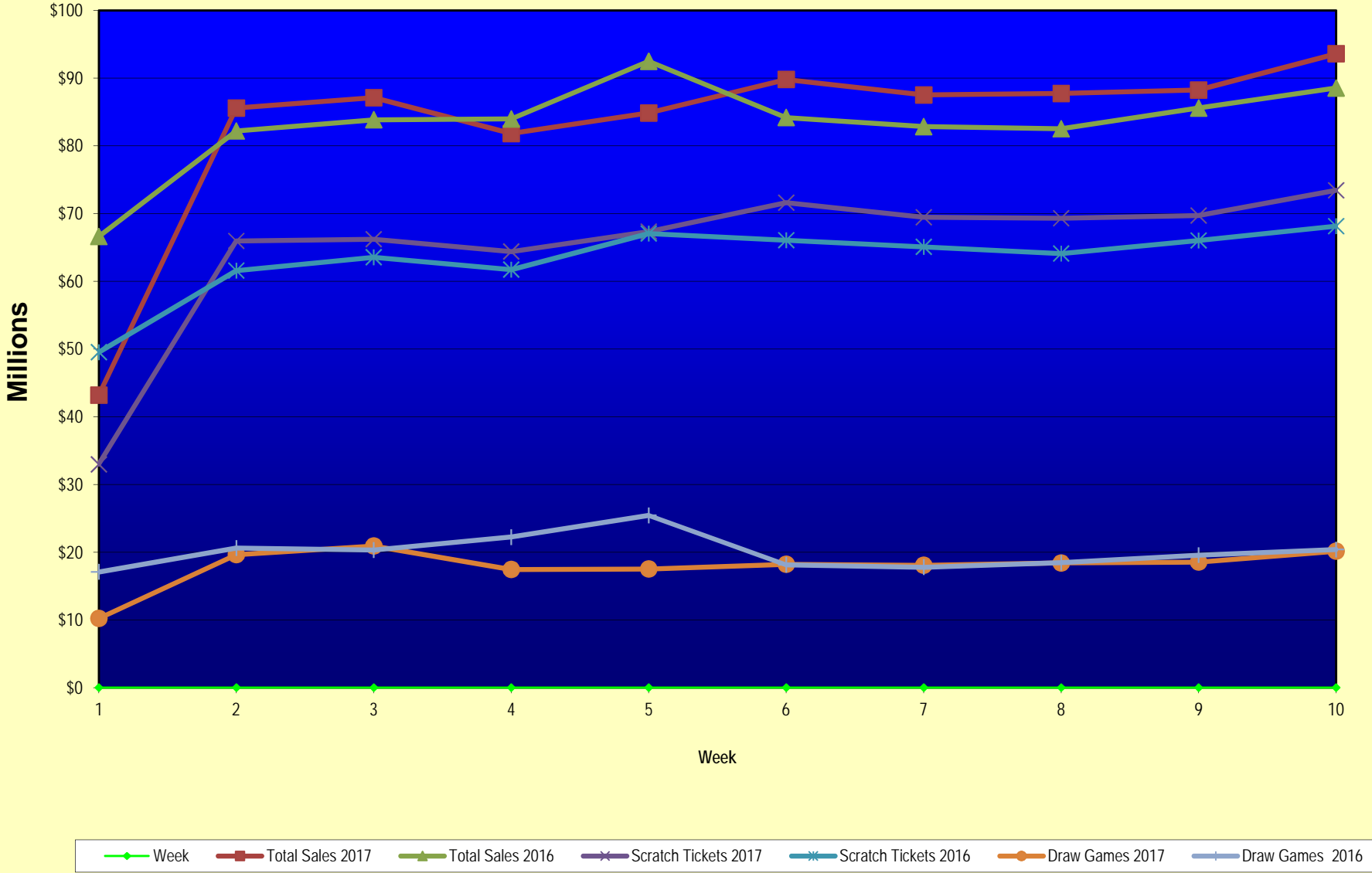
Texas Lottery Commission
Fiscal Year Over Year Change in Sales
Unaudited
FY 2017 Compared to FY 2016

			SCRATCH TICKETS				DRAW GAMES				TOTAL SALES			
FY 2017														
Week	Week	Ending	FY 2017	FY 2016	Difference	% change - Cumulative Sales	FY 2017	FY 2016	Difference	% change - Cumulative Sales	FY 2017	FY 2016	Difference	% change - Cumulative Sales
43	6/24/2017			\$69,243,660				\$24,290,311				\$93,533,971		
44	7/1/2017			\$70,782,313				\$29,331,406				\$100,113,719		
45	7/8/2017			\$67,636,625				\$38,673,314				\$106,309,939		
46	7/15/2017			\$68,064,720				\$21,311,938				\$89,376,658		
47	7/22/2017			\$69,509,821				\$21,982,689				\$91,492,510		
48	7/29/2017			\$64,486,970				\$30,699,953				\$95,186,923		
49	8/5/2017			\$69,206,183				\$18,277,075				\$87,483,258		
50	8/12/2017			\$67,165,060				\$18,101,640				\$85,266,700		
51	8/19/2017			\$69,067,938				\$18,981,681				\$88,049,619		
52	8/26/2017			\$67,821,162				\$19,606,571				\$87,427,733		
	8/31/2017 **			\$36,609,542				\$9,310,254				\$45,919,796		
Total thru Current Week			\$650,403,729	\$632,784,314	\$17,619,415	2.8%	\$179,136,230	\$200,071,334	(\$20,935,104)	-10.5%	\$829,539,959	\$832,855,648	(\$3,315,689)	-0.4%
Fiscal Year Total			\$650,403,729	\$3,715,807,432			\$179,136,230	\$1,351,710,491			\$829,539,959	\$5,067,517,923		

* FY 17 includes 3 days; FY 16 includes 5 days

** FY 17 includes 5 days; FY 16 includes 4 days

Texas Lottery Commission Fiscal Year Over Year Change in Sales



Note: Week 1 is not a full week of sales as this report is prepared on a Fiscal Year basis.

Texas Lottery Commission
Scratch Tickets by Price Point
Sales, Prize Expense, Sales Contribution and Payout Percentage With Year Over Year Changes
Unaudited

Fiscal Year	Price Point	# of Active Games	FY Sales	% of Scratch Ticket Sales	Year over Year Change in Sales	FY Prize Expense	Year over Year Change in Prize Expense	FY Sales Contribution	Year over Year Change in Contribution	Average Prize Payout %	Year over Year Change in Payout %
2016	\$1.00	13	28,143,993	4.4%		17,098,312		11,045,681		60.8%	0.4%
Through	\$2.00	22	61,705,686	9.8%		40,168,427		21,537,259		65.1%	-0.6%
11/7/2015	\$3.00	9	56,277,960	8.9%		37,027,838		19,250,122		65.8%	-0.2%
	\$5.00	38	201,453,705	31.8%		136,863,614		64,590,091		67.9%	0.0%
	\$10.00	14	128,613,820	20.3%		90,124,065		38,489,755		70.1%	-0.3%
	\$20.00	9	125,171,000	19.8%		93,805,988		31,365,012		74.9%	0.0%
	\$50.00	3	31,418,150	5.0%		24,434,616		6,983,534		77.8%	0.0%
Total		108	\$632,784,314			\$439,522,860		\$193,261,454		69.5%	0.0%
2017	\$1.00	16	26,468,743	4.1%		16,094,435		10,374,308		60.8%	0.9%
Through	\$2.00	21	55,690,330	8.6%		36,269,561		19,420,769		65.1%	-0.1%
11/5/2016	\$3.00	8	44,521,851	6.8%		29,352,182		15,169,669		65.9%	0.1%
	\$5.00	36	206,246,205	31.7%		140,110,469		66,135,736		67.9%	0.0%
	\$10.00	13	127,125,460	19.5%		89,922,074		37,203,386		70.7%	0.8%
	\$20.00	10	160,253,840	24.6%		120,079,113		40,174,727		74.9%	0.0%
	\$50.00	4	30,097,300	4.6%		23,421,582		6,675,718		77.8%	0.0%
Total		108	\$650,403,729			\$455,249,415		\$195,154,314		70.0%	0.6%
Variance	\$1.00	3	-1,675,250		-6.0%	-1,003,876	-5.9%	-671,374	-6.1%	0.05%	
2017 to	\$2.00	-1	-6,015,356		-9.7%	-3,898,866	-9.7%	-2,116,490	-9.8%	0.03%	
2016	\$3.00	-1	-11,756,109		-20.9%	-7,675,657	-20.7%	-4,080,452	-21.2%	0.13%	
	\$5.00	-2	4,792,500		2.4%	3,246,855	2.4%	1,545,645	2.4%	0.00%	
	\$10.00	-1	-1,488,360		-1.2%	-201,992	-0.2%	-1,286,368	-3.3%	0.66%	
	\$20.00	1	35,082,840		28.0%	26,273,125	28.0%	8,809,715	28.1%	-0.01%	
	\$50.00	1	-1,320,850		-4.2%	-1,013,034	-4.1%	-307,816	-4.4%	0.05%	
Total		0	\$17,619,415		2.8%	\$15,726,555	3.6%	\$1,892,860	1.0%	0.54%	

Notes - Scratch Ticket Variances

Texas Lottery Commission
Scratch Tickets by Price Point
Sales, Prize Expense, Sales Contribution and Payout Percentage With Year Over Year Changes
Unaudited

			FY 2017		FY 2016	Difference
Sales	\$1 - \$5		\$332,927,129		\$347,581,344	-\$14,654,215
Prize Exp.	\$1 - \$5		\$221,826,647		\$231,158,191	-\$9,331,544
Sales Cont.	\$1 - \$5		\$111,100,482		\$116,423,153	-\$5,322,671
Prize Exp. %	\$1 - \$5		66.6%		66.5%	0.1%
			FY 2017		FY 2016	Difference
Sales	\$10 - \$50		\$317,476,600		\$285,202,970	\$32,273,630
Prize Exp.	\$10 - \$50		\$233,422,769		\$208,364,669	\$25,058,099
Sales Cont.	\$10 - \$50		\$84,053,831		\$76,838,301	\$7,215,531
Prize Exp. %	\$10 - \$50		73.5%		73.1%	0.5%
			FY 2017		FY 2016	Difference
Sales	Scratch		\$650,403,729		\$632,784,314	\$17,619,415
Prize Exp.	Scratch		\$455,249,415		\$439,522,860	\$15,726,555
Sales Cont.	Scratch		\$195,154,314		\$193,261,454	\$1,892,860
Prize Exp. %	Scratch		70.0%		69.5%	0.5%

			FY 2017		FY 2016	Difference
Sales	\$1 - \$10		\$460,052,589		\$476,195,164	-\$16,142,575
Prize Exp.	\$1 - \$10		\$311,748,720		\$321,282,256	-\$9,533,536
Sales Cont.	\$1 - \$10		\$148,303,869		\$154,912,908	-\$6,609,039
Prize Exp. %	\$1 - \$10		67.8%		67.5%	0.3%
			FY 2017		FY 2016	Difference
Sales	\$20 - \$50		\$190,351,140		\$156,589,150	\$33,761,990
Prize Exp.	\$20 - \$50		\$143,500,695		\$118,240,604	\$25,260,091
Sales Cont.	\$20 - \$50		\$46,850,445		\$38,348,546	\$8,501,899
Prize Exp. %	\$20 - \$50		75.4%		75.5%	-0.1%
			FY 2017		FY 2016	Difference
Sales	Scratch		\$650,403,729		\$632,784,314	\$17,619,415
Prize Exp.	Scratch		\$455,249,415		\$439,522,860	\$15,726,555
Sales Cont.	Scratch		\$195,154,314		\$193,261,454	\$1,892,860
Prize Exp. %	Scratch		70.0%		69.5%	0.5%

Texas Lottery Commission
 Weekly Sales Summary
 & Comparison to Previous Week
 Unaudited

	Week Ending 11/05/2016		Week Ending 10/29/2016			
	<u>THIS WEEK</u>	% of Sales	<u>LAST WEEK</u>	% of Sales	<u>\$ change</u>	<u>% change</u>
Total Sales	<u>\$93,603,641</u>		<u>\$88,264,847</u>		<u>\$5,338,794</u>	6.05%
Scratch Tickets	<u>\$73,451,702</u>	78.5%	<u>\$69,729,599</u>	79.0%	<u>\$3,722,103</u>	5.34%
Lotto	\$2,168,782	2.3%	\$2,269,908	2.6%	-\$101,126	-4.46%
Lotto Extra	\$414,167	0.4%	\$430,487	0.5%	-\$16,320	-3.79%
Pick 3	\$4,996,360	5.3%	\$4,511,234	5.1%	\$485,126	10.75%
Pick 3 Sum It Up	\$97,149	0.1%	\$86,114	0.1%	\$11,035	12.81%
Cash Five	\$859,798	0.9%	\$833,125	0.9%	\$26,673	3.20%
Texas Two Step	\$796,978	0.9%	\$779,029	0.9%	\$17,949	2.30%
Mega Millions	\$1,904,765	2.0%	\$1,781,093	2.0%	\$123,672	6.94%
Megaplier	\$534,014	0.6%	\$500,203	0.6%	\$33,811	6.76%
Daily 4	\$1,913,301	2.0%	\$1,711,520	1.9%	\$201,781	11.79%
Daily 4 Sum It Up	\$100,223	0.1%	\$88,083	0.1%	\$12,141	13.78%
Powerball	\$4,796,408	5.1%	\$4,097,116	4.6%	\$699,292	17.07%
Power Play	\$660,205	0.7%	\$575,614	0.7%	\$84,591	14.70%
All or Nothing	\$591,246	0.6%	\$565,102	0.6%	\$26,144	4.63%
Texas Triple Chance	\$318,544	0.3%	\$306,622	0.3%	\$11,922	3.89%
Total Draw Game Sales	<u>\$20,151,939</u>		<u>\$18,535,248</u>		<u>\$1,616,691</u>	8.72%

* Totals may not sum due to rounding.

Texas Lottery Commission
Weekly Sales Summary
Unaudited

SCRATCH TICKETS
TOP TEN SELLING GAMES

For the week ending: 11/05/2016

Rank	Price Point	Game	Sales (Millions)
1	\$ 20	SUPER BREAK THE BANK	\$ 5.699
2	\$ 10	\$200 MILLION PAYOUT	\$ 3.744
3	\$ 20	100X THE CASH	\$ 3.687
4	\$ 5	SUPER LOTERIA	\$ 3.540
5	\$ 50	\$7,500,000 ULTIMATE CASH	\$ 3.270
6	\$ 5	GARLAND RICHES	\$ 3.248
7	\$ 10	CASINO CASH	\$ 3.071
8	\$ 10	CASHWORD MULTIPLIER	\$ 3.052
9	\$ 20	\$1,000,000 RICHES	\$ 2.374
10	\$ 20	HIT \$1,000,000	\$ 2.204

Texas Lottery Commission
Prize Payout Tracking Report
Unaudited

Through the week ending: 11/05/16

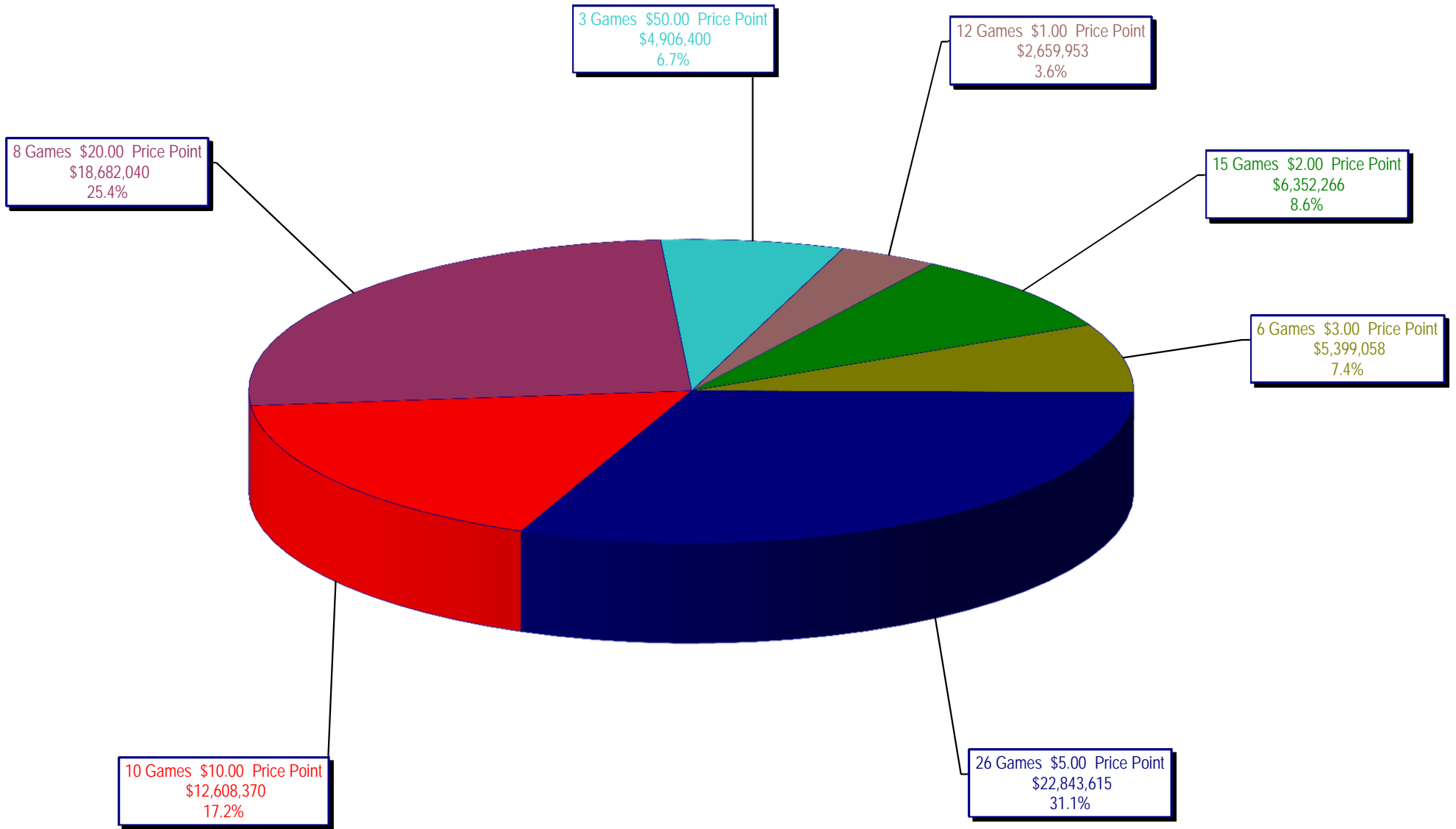
Draw Game Sales

		FY Sales Through Week Ending 11/5/2016		FY Prize Expense Through Week Ending 11/5/2016	Actual* Prize Payout	Base Payout (Prize Pool)
Lotto	\$	20,748,978	\$	10,375,038	50.00%	50.00%
Lotto Extra		3,933,931		2,083,776	52.97%	53.70%
Pick 3		44,336,297		22,441,680	50.62%	50.00%
Pick 3 Sum It Up		848,873		420,547	49.54%	50.00%
Cash Five		7,957,115		3,978,559	50.00%	50.00%
Texas Two Step		9,414,139		5,034,733	53.48%	50.00%
Mega Millions		19,035,555		9,743,757	51.19%	50.00%**
Megaplier		5,228,699		2,622,585	50.16%	N/A
Daily 4		16,384,528		7,126,050	43.49%	50.00%
Daily 4 Sum It Up		860,233		386,329	44.91%	50.00%
Powerball		36,852,536		18,437,274	50.03%	50.00%**
Power Play		5,287,915		2,647,275	50.06%	N/A
All or Nothing		5,281,050		3,039,172	57.55%	55.98%
Texas Triple Chance		2,966,382		1,548,435	52.20%	54.42%
Totals	\$	179,136,230	\$	89,885,209	50.18%	

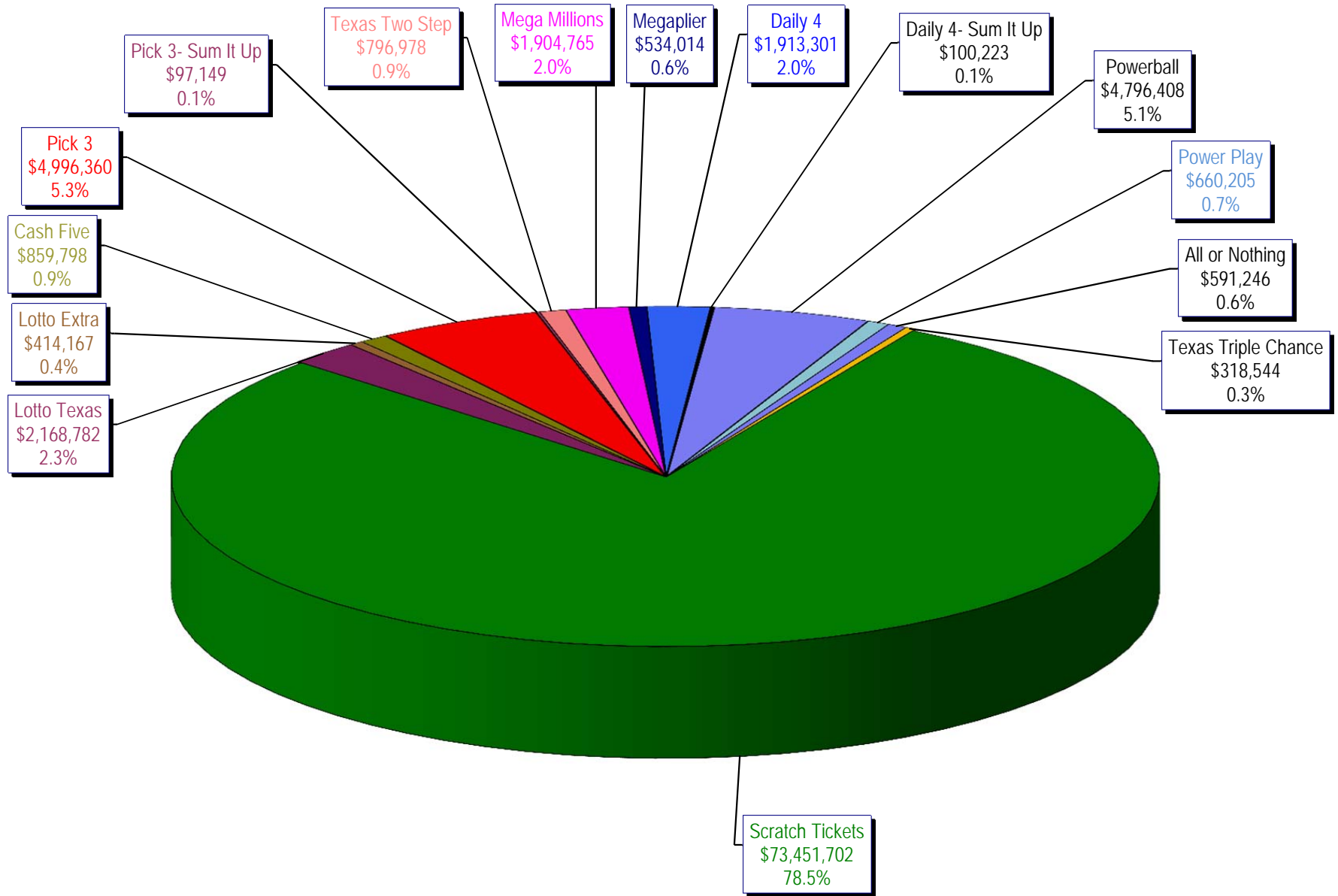
* Before Unclaimed Prizes

**Estimated; depends on # of guaranteed prizes won in Texas

Texas Lottery Commission
Scratch Ticket Sales
For the week ending 11/05/16
(Unaudited)



Texas Lottery Commission
All Game Sales
For the week ending 11/05/16
(Unaudited)



Texas Lottery Commission - Weekly Sales Summary for FY 2017 (Unaudited)

Week Ended	Scratch Tickets	New Games & Dates	Lotto Texas	Jackpot W S	Lotto Extra	Pick 3	Pick 3 Sum It Up	Cash Five	Texas Two Step	Jackpot M TH	Mega Millions	Jackpot T F	Megaplier	Daily 4	Daily 4 Sum It Up	Powerball	Jackpot W S	Power Play	All or Nothing	Texas Triple Chance	Total	Per Cap.
9/3/2016*	69,589,808	0	2,106,552	8.75 9.25	402,665	4,798,985	92,214	843,135	810,947	200 200	2,331,141	84 92	631,299	1,788,614	96,398	4,189,234	154 170	603,430	528,102	306,194	89,118,717	3.24
9/10/2016	65,952,418	1810 (\$1.N); 1809 (\$1.N); 1811 (\$5.N) - 9/06/16	2,095,828	9.75 10.25	399,944	4,590,651	86,697	818,614	862,148	225 275	2,490,552	101 111	655,066	1,647,119	87,455	4,473,836	186 205	628,810	506,718	291,940	85,587,795	3.12
9/17/2016	66,196,270	0	2,127,440	11 11.75	405,936	4,553,039	86,110	822,240	1,180,444	400 550	2,661,252	122 133	692,583	1,705,629	91,610	5,096,928	222 244	696,626	503,466	291,988	87,111,560	3.17
9/24/2016	64,383,005	1793 (\$2.N); 1782 (\$5.N); 1781 (\$10.N) - 9/19/16	2,141,721	12.25 13	404,127	4,551,066	83,958	811,604	1,465,789	700 900	1,733,288	15 20	489,347	1,680,793	90,386	2,790,676	40 50	429,512	503,041	275,858	81,834,170	2.98
10/1/2016	67,349,951	0	2,203,652	13.25 14	414,603	4,642,047	91,016	857,979	816,836	200 225	1,840,801	25 30	515,384	1,688,464	88,184	2,960,772	60 70	455,619	589,964	354,532	84,869,803	3.09
10/8/2016	71,598,690	1772 (\$1.N); 1770 (\$2.N); 1813 (\$5.N); 1779 (\$20.N) - 10/03/16	2,211,941	14.5 15.5	419,062	4,900,537	94,965	867,520	849,234	200 225	1,925,289	35 41	540,723	1,780,544	92,908	3,109,092	80 91	471,027	611,898	336,368	89,809,797	3.27
10/15/2016	69,444,762	0	2,207,002	16 16.75	416,802	4,549,017	89,171	836,548	1,024,493	300 425	1,780,458	49 15	496,567	1,679,519	87,007	3,499,528	107 122	510,617	577,343	321,190	87,520,023	3.19
10/22/2016	69,317,066	1814 (\$3.N); 1815 (\$5.N); 1832 (\$50.N) - 10/17/16	2,222,089	17 18	420,632	4,457,898	84,115	836,942	1,260,293	575 750	1,714,985	20 25	482,408	1,636,471	83,009	3,800,444	136 151	542,655	564,808	315,588	87,739,402	3.19
10/29/2016	69,729,599	0	2,269,908	18.5 19.25	430,487	4,511,234	86,114	833,125	779,029	200 200	1,781,093	30 35	500,203	1,711,520	88,083	4,097,116	164 180	575,614	565,102	306,622	88,264,847	3.21
11/5/2016	73,451,702	0	2,168,782	20 5	414,167	4,996,360	97,149	859,798	796,978	200 200	1,904,765	40 47	534,014	1,913,301	100,223	4,796,408	198 217	660,205	591,246	318,544	93,603,641	3.41
weekly change	5.3%		-4.5%		-3.8%	10.8%	12.8%	3.2%	2.3%		6.9%		6.8%	11.8%	13.8%	17.1%		14.7%	4.6%	3.9%	6.0%	
	SALES		SALES		SALES	SALES	SALES	SALES	SALES		SALES		SALES	SALES	SALES	SALES		SALES	SALES	SALES	SALES	% of Sales
Calendar Year to date	3,198,651,373		99,024,808		18,380,141	214,959,045	4,372,053	38,434,093	46,379,654		132,808,785		33,929,195	77,498,642	4,191,917	416,364,675		48,560,507	25,211,306	16,950,635	4,375,716,828	100.0%
Fiscal Year to date 2017	650,403,729		20,748,978		3,933,931	44,336,297	848,873	7,957,115	9,414,139		19,035,555		5,228,699	16,384,528	860,233	36,852,536		5,287,915	5,281,050	2,966,382	829,539,959	100.0%
*Full week includes 4 days from FY16																						