



WEEKLY SALES SUMMARY

Unaudited

Week Ending: 11/08/08

Texas Lottery Commission
Fiscal Year to Date Sales Comparison
Unaudited

Through the week ending 11/08/2008 (10 weeks)

Sales by Game	FY 2007 *	FY 2008 **	FY 2009	\$ Change		% Change	
				FY 2009 to FY 2007	FY 2009 to FY 2008	FY 2009 to FY 2007	FY 2009 to FY 2008
Instants	\$ 527,664,136	\$ 527,601,613	\$ 486,159,841	\$ -41,504,295	\$ -41,441,772	-7.9%	-7.9%
Lotto Texas	40,179,842	41,859,943	33,786,062	-6,393,780	-8,073,881	-15.9%	-19.3%
Pick 3	59,250,063	55,541,299	50,726,584	-8,523,479	-4,814,715	-14.4%	-8.7%
Pick 3 Sum It Up	-	-	1,094,786	1,094,786	1,094,786	-	-
Cash 5	17,128,606	15,356,193	13,234,713	-3,893,893	-2,121,480	-22.7%	-13.8%
Texas Two Step	12,076,392	8,605,236	9,180,365	-2,896,027	575,129	-24.0%	6.7%
Mega Millions	29,250,176	25,565,857	23,985,108	-5,265,069	-1,580,750	-18.0%	-6.2%
Megaplier	7,087,814	6,663,078	6,328,804	-759,010	-334,274	-10.7%	-5.0%
Daily 4	-	7,282,297	7,579,627	7,579,627	297,330	-	-
Daily 4 Sum It Up	-	2,195,075	1,021,091	1,021,091	-1,173,985	-	-
Total	\$ 692,637,029	\$ 690,670,591	\$ 633,096,980	\$ -59,540,049	\$ -57,573,612	-8.6%	-8.3%

* 3 extra days in 2007 ** 2 extra days in 2008

Texas Lottery Commission
Fiscal Year Over Year Change in Sales
Unaudited
FY 2009 Compared to FY 2008

Week	FY 2009 Week Ending	INSTANT TICKETS				ON-LINE GAMES				TOTAL SALES			
		FY 2009	FY 2008	Difference	% change - Cumulative Sales	FY 2009	FY 2008	Difference	% change - Cumulative Sales	FY 2009	FY 2008	Difference	% change - Cumulative Sales
1	9/6/2008**	\$44,890,104	\$62,376,229	(\$17,486,125)	-28.0%	\$14,722,011	\$19,372,224	(\$4,650,213)	-24.0%	\$59,612,115	\$81,748,453	(\$22,136,338)	-27.1%
2	9/13/2008	\$46,309,551	\$52,458,866	(\$6,149,315)	-20.6%	\$13,704,860	\$16,926,163	(\$3,221,303)	-21.7%	\$60,014,411	\$69,385,029	(\$9,370,618)	-20.8%
3	9/20/2008	\$42,923,171	\$49,998,934	(\$7,075,763)	-18.6%	\$12,291,263	\$15,792,283	(\$3,501,020)	-21.8%	\$55,214,434	\$65,791,217	(\$10,576,783)	-19.4%
4	9/27/2008	\$47,042,801	\$49,894,175	(\$2,851,374)	-15.6%	\$14,222,339	\$14,800,514	(\$578,175)	-17.9%	\$61,265,140	\$64,694,689	(\$3,429,549)	-16.2%
5	10/4/2008	\$50,747,162	\$53,486,863	(\$2,739,701)	-13.5%	\$15,784,472	\$16,618,430	(\$833,958)	-15.3%	\$66,531,634	\$70,105,293	(\$3,573,659)	-14.0%
6	10/11/2008	\$49,763,789	\$50,918,020	(\$1,154,231)	-11.7%	\$15,622,498	\$15,601,410	\$21,088	-12.9%	\$65,386,287	\$66,519,430	(\$1,133,143)	-12.0%
7	10/18/2008	\$49,299,053	\$50,532,253	(\$1,233,200)	-10.5%	\$15,167,940	\$15,682,666	(\$514,726)	-11.6%	\$64,466,993	\$66,214,919	(\$1,747,926)	-10.7%
8	10/25/2008	\$49,977,581	\$50,347,450	(\$369,869)	-9.3%	\$14,525,843	\$15,586,516	(\$1,060,673)	-11.0%	\$64,503,424	\$65,933,966	(\$1,430,542)	-9.7%
9	11/1/2008	\$50,346,542	\$53,953,733	(\$3,607,191)	-9.0%	\$14,838,845	\$16,775,983	(\$1,937,139)	-11.1%	\$65,185,387	\$70,729,716	(\$5,544,330)	-9.5%
10	11/8/2008	\$54,860,087	\$53,635,090	\$1,224,997	-7.9%	\$16,057,069	\$15,912,791	\$144,278	-9.9%	\$70,917,156	\$69,547,881	\$1,369,275	-8.3%
11	11/15/2008		\$51,254,401				\$15,797,076				\$67,051,477		
12	11/22/2008		\$50,897,817				\$15,801,720				\$66,699,537		
13	11/29/2008		\$53,913,115				\$17,055,505				\$70,968,620		
14	12/6/2008		\$55,702,697				\$17,900,717				\$73,603,414		
15	12/13/2008		\$53,703,516				\$17,820,841				\$71,524,357		
16	12/20/2008		\$57,592,769				\$17,436,233				\$75,029,002		
17	12/27/2008		\$57,696,003				\$14,743,680				\$72,439,683		
18	1/3/2009		\$57,935,952				\$15,704,450				\$73,640,402		
19	1/10/2009		\$55,360,542				\$15,691,540				\$71,052,082		
20	1/17/2009		\$54,920,166				\$16,259,669				\$71,179,835		
21	1/24/2009		\$54,439,890				\$16,691,724				\$71,131,614		
22	1/31/2009		\$57,464,382				\$17,968,227				\$75,432,609		
23	2/7/2009		\$60,715,019				\$20,097,338				\$80,812,357		
24	2/14/2009		\$57,093,143				\$22,179,908				\$79,273,051		
25	2/21/2009		\$57,627,047				\$27,230,539				\$84,857,586		
26	2/28/2009		\$55,591,667				\$17,016,118				\$72,607,785		
27	3/7/2009		\$56,837,481				\$16,690,193				\$73,527,674		
28	3/14/2009		\$54,587,112				\$16,448,165				\$71,035,277		
29	3/21/2009		\$53,098,937				\$16,639,184				\$69,738,121		
30	3/28/2009		\$53,933,689				\$17,698,625				\$71,632,314		
31	4/4/2009		\$57,598,982				\$17,665,411				\$75,264,393		
32	4/11/2009		\$53,954,185				\$15,860,784				\$69,814,969		
33	4/18/2009		\$53,946,736				\$16,452,676				\$70,399,412		
34	4/25/2009		\$51,533,006				\$16,873,949				\$68,406,955		
35	5/2/2009		\$53,250,568				\$18,202,103				\$71,452,671		
36	5/9/2009		\$54,060,849				\$18,422,562				\$72,483,411		
37	5/16/2009		\$54,010,641				\$20,728,360				\$74,739,001		
38	5/23/2009		\$50,377,032				\$15,461,384				\$65,838,416		
39	5/30/2009		\$49,545,080				\$15,175,370				\$64,720,450		
40	6/6/2009		\$53,702,986				\$15,982,166				\$69,685,152		

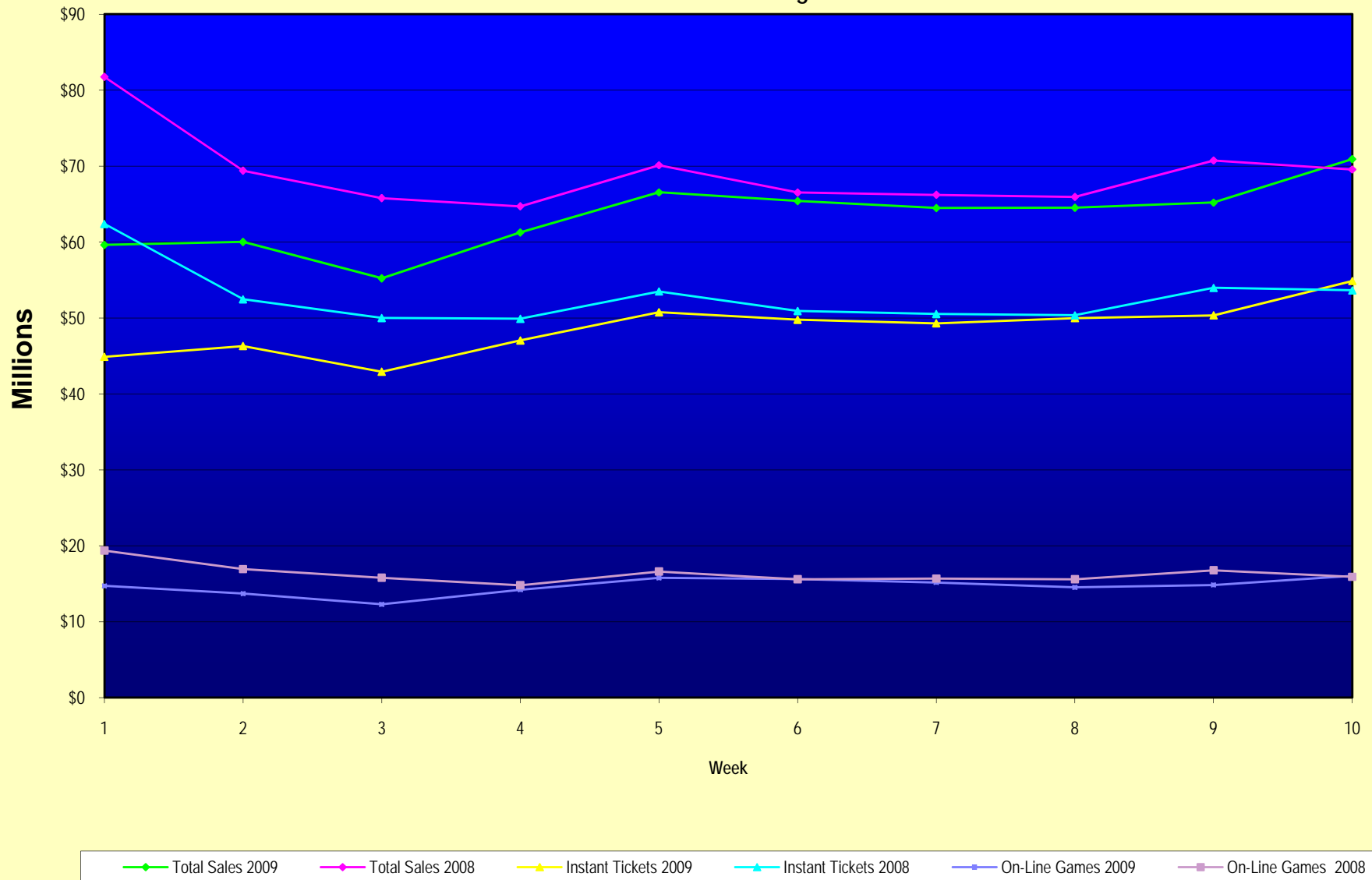
Note: Week 1 is not a full week of sales as this report is prepared on a Fiscal Year basis.

Texas Lottery Commission
Fiscal Year Over Year Change in Sales
Unaudited
FY 2009 Compared to FY 2008

Week	FY 2009 Week Ending	INSTANT TICKETS				ON-LINE GAMES				TOTAL SALES			
		FY 2009	FY 2008	Difference	% change - Cumulative Sales	FY 2009	FY 2008	Difference	% change - Cumulative Sales	FY 2009	FY 2008	Difference	% change - Cumulative Sales
41	6/13/2009		\$51,171,483				\$16,589,087				\$67,760,570		
42	6/20/2009		\$50,650,362				\$15,728,484				\$66,378,846		
43	6/27/2009		\$49,258,266				\$15,250,905				\$64,509,171		
44	7/4/2009		\$53,393,355				\$16,270,619				\$69,663,974		
45	7/11/2009		\$53,127,756				\$16,914,922				\$70,042,678		
46	7/18/2009		\$51,593,146				\$17,752,738				\$69,345,884		
47	7/25/2009		\$49,902,181				\$16,706,145				\$66,608,326		
48	8/1/2009		\$49,605,420				\$16,254,383				\$65,859,803		
49	8/8/2009		\$50,961,907				\$16,770,496				\$67,732,403		
50	8/15/2009		\$49,452,511				\$16,749,487				\$66,201,998		
51	8/22/2009		\$49,249,518				\$17,286,302				\$66,535,820		
52	8/29/2009		\$49,468,928				\$18,109,997				\$67,578,925		
53	9/5/2009		\$6,054,239				\$493,109				\$6,547,348		
Total thru Current Week		\$486,159,841	\$527,601,613	(\$41,441,772)	-7.9%	\$146,937,139	\$163,068,978	(\$16,131,840)	-9.9%	\$633,096,980	\$690,670,591	(\$57,573,612)	-8.3%
Fiscal Year Total		\$486,159,841	\$2,783,836,095			\$146,937,139	\$887,641,858			\$633,096,980	\$3,671,477,953		

** FY 2009 includes 6 days; FY 2008 includes 8 days

Texas Lottery Commission Fiscal Year Over Year Change in Sales



Note: Week 1 is not a full week of sales as this report is prepared on a Fiscal Year basis.

Texas Lottery Commission
Instant Tickets by Price Point
Sales, Prize Expense, Sales Contribution and Payout Percentage With Year Over Year Changes
Unaudited

Fiscal Year	Price Point	# of Active Games	FY Sales	Year over Year Change in Sales	FY Prize Expense	Year over Year Change in Prize Expense	FY Sales Contribution	Year over Year Change in Contribution	Average Prize Payout %	Year over Year Change in Payout %
2008	\$1.00	35	\$47,748,848		\$28,707,012		\$19,041,836		60.1%	0.1%
thru	\$2.00	40	\$89,884,274		\$58,439,016		\$31,445,258		65.0%	0.3%
11/10/2007	\$3.00	11	\$42,462,123		\$27,984,177		\$14,477,946		65.9%	0.1%
	\$5.00	30	\$140,847,200		\$95,429,715		\$45,417,485		67.8%	-0.3%
	\$7.00	10	\$35,445,914		\$24,091,306		\$11,354,608		68.0%	0.0%
	\$10.00	14	\$79,763,946		\$55,836,627		\$23,927,319		70.0%	-0.7%
	\$20.00	6	\$28,753,140		\$20,683,222		\$8,069,918		71.9%	0.0%
	\$25.00	2	\$27,096,975		\$19,669,329		\$7,427,646		72.6%	0.2%
	\$30.00	2	\$7,393,260		\$5,344,163		\$2,049,097		72.3%	0.0%
	\$50.00	1	\$28,206,150		\$20,343,259		\$7,862,891		72.1%	0.0%
Total		151	\$527,601,830		\$356,527,825		\$171,074,005		67.6%	0.1%
2009	\$1.00	28	\$40,621,780		\$25,721,189		\$14,900,591		63.3%	5.4%
thru	\$2.00	25	\$86,869,926		\$56,342,433		\$30,527,493		64.9%	-0.6%
11/8/2008	\$3.00	13	\$54,843,330		\$36,031,990		\$18,811,340		65.7%	0.0%
	\$5.00	27	\$145,575,344		\$99,014,946		\$46,560,398		68.0%	0.1%
	\$7.00	6	\$16,346,841		\$11,122,254		\$5,224,587		68.0%	0.1%
	\$10.00	12	\$63,682,250		\$44,573,022		\$19,109,228		70.0%	0.0%
	\$20.00	7	\$49,220,220		\$35,326,368		\$13,893,852		71.8%	0.0%
	\$25.00	1	\$2,318,350		\$1,686,321		\$632,029		72.7%	0.2%
	\$30.00	3	\$4,696,350		\$3,404,657		\$1,291,693		72.5%	0.1%
	\$50.00	3	\$21,985,450		\$15,902,864		\$6,082,586		72.3%	0.2%
Total		125	\$486,159,841		\$329,126,046		\$157,033,795		67.7%	0.0%
Variance	\$1.00	-7	-\$7,127,068	-14.9%	-\$2,985,823	-10.4%	-\$4,141,245	-21.7%	3.20%	
2009 to	\$2.00	-15	-\$3,014,348	-3.4%	-\$2,096,582	-3.6%	-\$917,766	-2.9%	-0.16%	
2008	\$3.00	2	\$12,381,207	29.2%	\$8,047,812	28.8%	\$4,333,395	29.9%	-0.20%	
	\$5.00	-3	\$4,728,144	3.4%	\$3,585,231	3.8%	\$1,142,913	2.5%	0.26%	
	\$7.00	-4	-\$19,099,073	-53.9%	-\$12,969,052	-53.8%	-\$6,130,021	-54.0%	0.07%	
	\$10.00	-2	-\$16,081,696	-20.2%	-\$11,263,604	-20.2%	-\$4,818,092	-20.1%	-0.01%	
	\$20.00	1	\$20,467,080	71.2%	\$14,643,147	70.8%	\$5,823,933	72.2%	-0.16%	
	\$25.00	-1	-\$24,778,625	-91.4%	-\$17,983,008	-91.4%	-\$6,795,617	-91.5%	0.15%	
	\$30.00	1	-\$2,696,910	-36.5%	-\$1,939,505	-36.3%	-\$757,405	-37.0%	0.21%	
	\$50.00	2	-\$6,220,700	n/a	-\$4,440,394	n/a	-\$1,780,306	n/a	0.21%	
Total		-26	-\$41,441,989	-7.9%	-\$27,401,779	-7.7%	-\$14,040,210	-8.2%	0.12%	

Notes - Instant Ticket Variances

Texas Lottery Commission
Instant Tickets by Price Point
Sales, Prize Expense, Sales Contribution and Payout Percentage With Year Over Year Changes
Unaudited

		FY 2009	FY 2008	Difference
Sales	\$1 - \$7	\$344,257,221	\$356,388,359	-\$12,131,138
Prize Exp.	\$1 - \$7	\$228,232,812	\$234,651,226	-\$6,418,414
Sales Cont.	\$1 - \$7	\$116,024,409	\$121,737,133	-\$5,712,724
Prize Exp. %	\$1 - \$7	66.3%	65.8%	0.5%
		FY 2009	FY 2008	Difference
Sales	\$10 - \$50	\$141,902,620	\$171,213,471	-\$29,310,851
Prize Exp.	\$10 - \$50	\$100,893,234	\$121,876,599	-\$20,983,365
Sales Cont.	\$10 - \$50	\$41,009,386	\$49,336,872	-\$8,327,486
Prize Exp. %	\$10 - \$50	71.1%	71.2%	-0.1%
		FY 2009	FY 2008	Difference
Sales	Instant	\$486,159,841	\$527,601,830	-\$41,441,989
Prize Exp.	Instant	\$329,126,046	\$356,527,825	-\$27,401,779
Sales Cont.	Instant	\$157,033,795	\$171,074,005	-\$14,040,210
Prize Exp. %	Instant	67.7%	67.6%	0.1%

		FY 2009	FY 2008	Difference
Sales	\$1 - \$10	\$407,939,471	\$436,152,305	-\$28,212,834
Prize Exp.	\$1 - \$10	\$272,805,834	\$290,487,853	-\$17,682,018
Sales Cont.	\$1 - \$10	\$135,133,637	\$145,664,452	-\$10,530,816
Prize Exp. %	\$1 - \$10	66.9%	66.6%	0.3%
		FY 2009	FY 2008	Difference
Sales	\$20 - \$50	\$78,220,370	\$91,449,525	-\$13,229,155
Prize Exp.	\$20 - \$50	\$56,320,212	\$66,039,973	-\$9,719,761
Sales Cont.	\$20 - \$50	\$21,900,158	\$25,409,552	-\$3,509,394
Prize Exp. %	\$20 - \$50	72.0%	72.2%	-0.2%
		FY 2009	FY 2008	Difference
Sales	Instant	\$486,159,841	\$527,601,830	-\$41,441,989
Prize Exp.	Instant	\$329,126,046	\$356,527,825	-\$27,401,779
Sales Cont.	Instant	\$157,033,795	\$171,074,005	-\$14,040,210
Prize Exp. %	Instant	67.7%	67.6%	0.1%

Texas Lottery Commission
Weekly Sales Summary
& Comparison to Previous Week
 Unaudited

	Week Ending 11/08/08		Week Ending 11/01/08			
	<u>THIS WEEK</u>	% of Sales	<u>LAST WEEK</u>	% of Sales	<u>\$ change</u>	<u>% change</u>
Total Sales	<u>\$70,917,156</u>		<u>\$65,185,387</u>		<u>\$5,731,770</u>	8.79%
Instant Tickets	<u>\$54,860,087</u>	77.4%	<u>\$50,346,542</u>	77.2%	<u>\$4,513,545</u>	8.96%
Lotto Texas	\$3,290,417	4.6%	\$3,325,641	5.1%	-\$35,224	-1.06%
Pick 3	\$5,686,701	8.0%	\$5,234,124	8.0%	\$452,577	8.65%
Pick 3 Sum It Up	\$118,495	0.2%	\$109,983	0.2%	\$8,512	7.74%
Cash 5	\$1,397,985	2.0%	\$1,339,046	2.1%	\$58,939	4.40%
Texas Two Step	\$1,158,101	1.6%	\$946,035	1.5%	\$212,066	22.42%
Mega Millions	\$2,729,303	3.8%	\$2,347,596	3.6%	\$381,707	16.26%
Megaplier	\$692,662	1.0%	\$626,235	1.0%	\$66,427	10.61%
Daily 4	\$871,230	1.2%	\$805,572	1.2%	\$65,658	8.15%
Daily 4 Sum It Up	\$112,176	0.2%	\$104,613	0.2%	\$7,563	7.23%
Total Online Sales	<u>\$16,057,069</u>		<u>\$14,838,845</u>		<u>\$1,218,225</u>	8.21%

* Totals may not sum due to rounding.

Texas Lottery Commission
Weekly Sales Summary
Unaudited

INSTANT TICKETS
TOP TEN SELLING GAMES

For the Week Ending : 11/08/08

Rank	Price Point	Game	Sales (Millions)
1	\$ 10	JINGLE JUNGLE BUCKS	\$ 4.337
2	\$ 5	MERRY MONEY	\$ 3.370
3	\$ 3	BONUS CASHWORD	\$ 2.584
4	\$ 20	TEXAS \$50 MILLION CLUB	\$ 2.381
5	\$ 2	SILVER BELLS	\$ 2.306
6	\$ 10	SET FOR LIFE	\$ 1.967
7	\$ 7	SIZZLIN' RED 7'S	\$ 1.966
8	\$ 5	THE TEXAS RANGERS LIMITED EDITION SILVER SERIES	\$ 1.909
9	\$ 50	\$130,000,000 PLATINUM PAYOUT	\$ 1.726
10	\$ 2	BREAK THE BANK	\$ 1.696

Texas Lottery Commission
Prize Payout Tracking Report
Unaudited

Through Week Ending 11/08/08

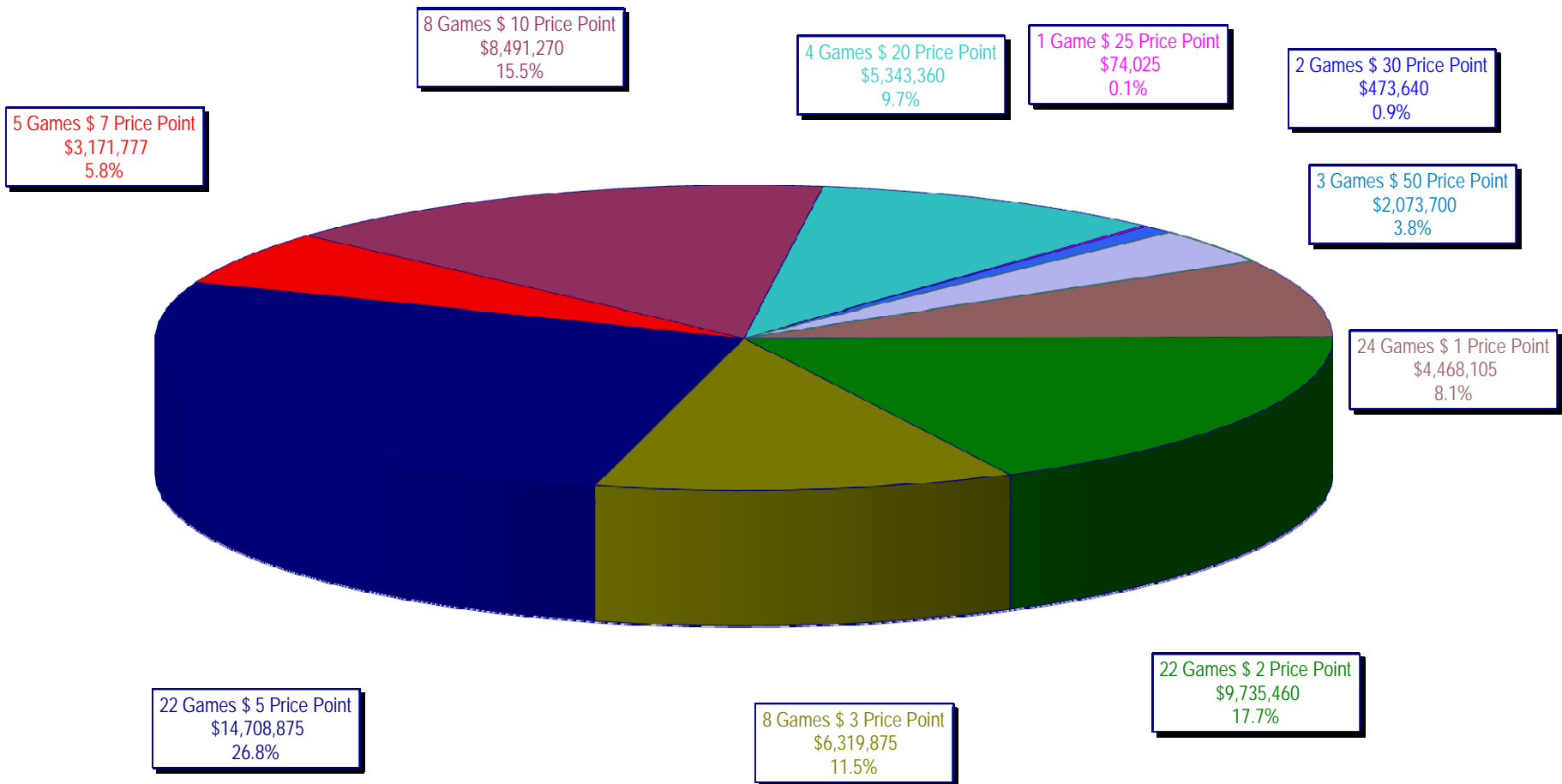
On-Line Sales

		FY Sales Through Week Ending 11/8/2008		FY Prize Expense Through Week Ending 11/8/2008	Actual* Prize Payout	Base Payout (Prize Pool)
Lotto	\$	33,786,062	\$	16,986,908	50.28%	50.00%
Pick 3		50,726,584		24,828,490	48.95%	50.00%
Pick 3 Sum It Up		1,094,786		482,707	44.09%	50.00%
Cash 5		13,234,713		6,705,597	50.67%	50.00%
Texas Two-Step		9,180,365		4,701,652	51.21%	50.00%
Mega Millions		23,985,108		11,425,345	47.64%	50.00%**
Megaplier		6,328,804		2,205,268	34.84%	N/A
Daily 4		7,579,627		3,338,500	44.05%	50.00%
Daily 4-Sum It Up		1,021,091		372,065	36.44%	50.00%
Totals	\$	146,937,139	\$	71,046,533	48.35%	

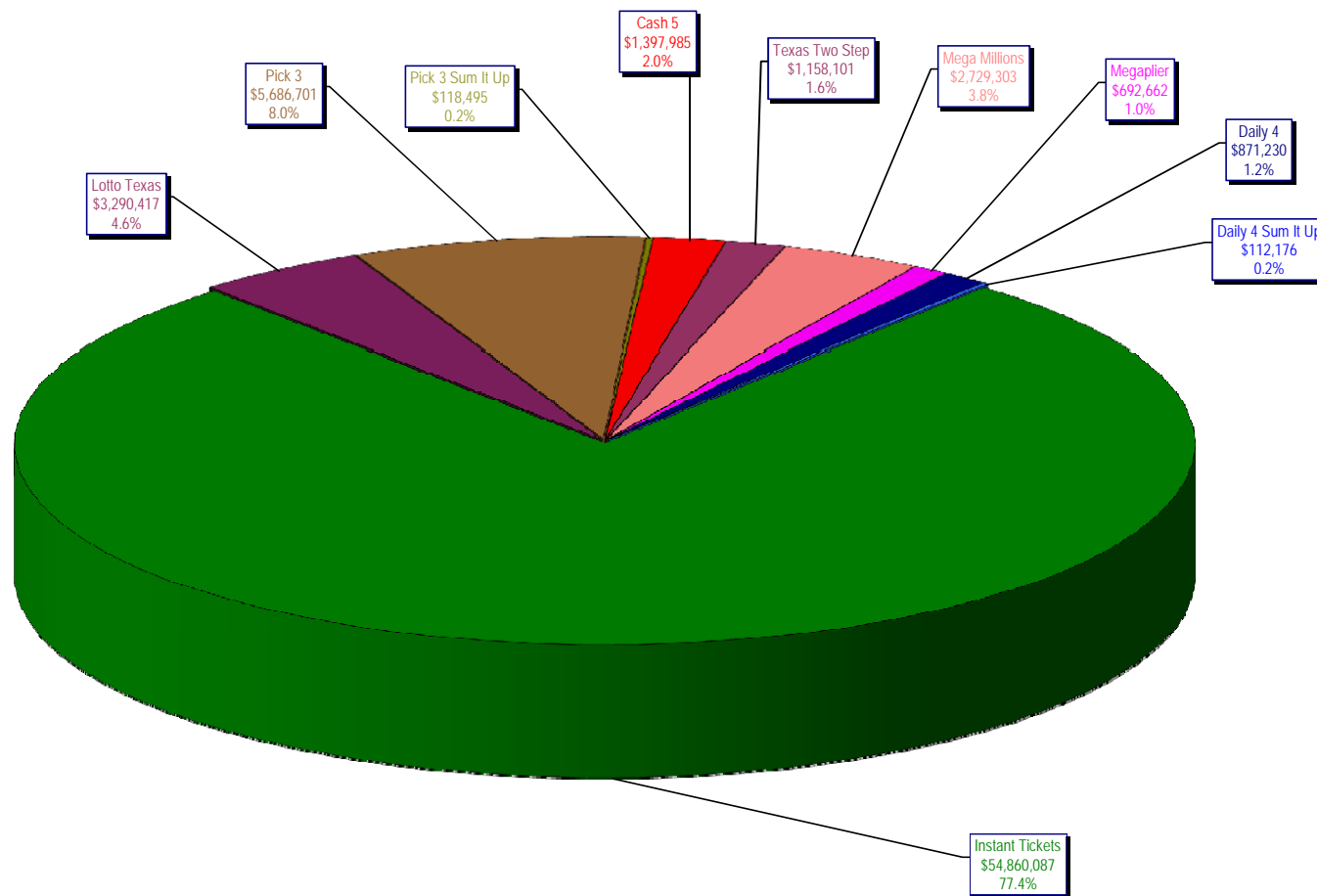
* Before Unclaimed Prizes

** Estimated; depends on # of guaranteed prizes won in Texas

Texas Lottery Commission
Instant Ticket Sales
For the Week Ending 11/08/2008
(Unaudited)



Texas Lottery Commission
All Game Sales
For the Week Ending 11/08/2008
(Unaudited)



* Totals may not sum due to rounding.

