



*WEEKLY SALES SUMMARY*

Unaudited

[Week Ending: 11/08/2014](#)

Texas Lottery Commission  
Fiscal Year to Date Sales Comparison  
Unaudited

Through the Week Ending 11/08/2014 (10 Weeks)

Sales by Game	FY 2013 *	FY 2014 **	FY 2015	\$ Change		% Change	
				FY 2015 to FY 2013	FY 2015 to FY 2014	FY 2015 to FY 2013	FY 2015 to FY 2014
Instants	\$ 576,783,467	\$ 599,223,564	\$ 611,896,735	\$ 35,113,268	\$ 12,673,171	6.1%	2.1%
Lotto Texas	32,229,635	26,167,654	22,933,072	-9,296,563	-3,234,582	-28.8%	-12.4%
Lotto Extra	-	3,283,270	3,453,753	3,453,753	170,483	-	5.2%
Pick 3	51,351,631	48,394,394	47,190,758	-4,160,873	-1,203,636	-8.1%	-2.5%
Pick 3 Sum It Up	974,958	961,720	910,467	-64,491	-51,253	-6.6%	-5.3%
Cash Five	11,170,250	10,117,766	9,456,527	-1,713,723	-661,239	-15.3%	-6.5%
Texas Two Step	10,401,674	10,524,400	10,679,983	278,309	155,583	2.7%	1.5%
Mega Millions	21,439,467	25,925,284	34,053,693	12,614,226	8,128,409	58.8%	31.4%
Megaplier	4,942,310	5,741,929	7,549,365	2,607,055	1,807,436	52.7%	31.5%
Daily 4	13,532,906	15,790,516	15,696,373	2,163,467	-94,143	16.0%	-0.6%
Daily 4 Sum It Up	920,136	979,234	957,770	37,634	-21,464	4.1%	-2.2%
Powerball	32,744,427	50,778,809	36,550,187	3,805,760	-14,228,622	11.6%	-28.0%
Power Play	4,098,714	5,714,086	4,675,947	577,233	-1,038,139	14.1%	-18.2%
All or Nothing	19,650,491	9,365,072	7,607,292	-12,043,199	-1,757,780	-61.3%	-18.8%
Monopoly	-	-	1,201,750	1,201,750	1,201,750	-	-
<b>Total</b>	<b>\$ 780,240,065</b>	<b>\$ 812,967,697</b>	<b>\$ 814,813,672</b>	<b>\$ 34,573,607</b>	<b>\$ 1,845,975</b>	<b>4.4%</b>	<b>0.2%</b>

\* 2 extra days

\*\* 1 extra day

Texas Lottery Commission  
Fiscal Year to Date Cumulative Average Sales Comparison  
Unaudited

Through the Week Ending 11/08/2014 (10 Weeks)

Sales by Game	FY 2013	FY 2014	FY 2015
Instant	\$ 8,123,711	\$ 8,560,337	\$ 8,868,069
Lotto Texas	453,939	373,824	332,363
Lotto Extra	-	46,904	50,054
Pick 3	723,262	691,348	683,924
Pick 3 Sum It Up	13,732	13,739	13,195
Cash Five	157,327	144,540	137,051
Texas Two Step	146,502	150,349	154,782
Mega Millions	301,964	370,361	493,532
Megaplier	69,610	82,028	109,411
Daily 4	190,604	225,579	227,484
Daily 4 Sum It Up	12,960	13,989	13,881
Powerball	461,189	725,412	529,713
Power Play	57,728	81,630	67,767
All or Nothing	* 311,913	133,787	110,251
Monopoly	-	- **	57,226
<b>Total</b>	<b>\$ 11,024,442</b>	<b>\$ 11,613,824</b>	<b>\$ 11,848,703</b>

thru 11/10/2012	thru 11/09/2013	thru 11/08/2014
71 days	70 days	69 days
* 63 days		** 21 days

Texas Lottery Commission  
Fiscal Year Over Year Change in Sales  
Unaudited  
FY 2015 Compared to FY 2014

			INSTANT TICKETS				DRAW GAMES				TOTAL SALES			
Week	FY 2015		FY 2014	Difference	% change - Cumulative Sales	FY 2015	FY 2014	Difference	% change - Cumulative Sales	FY 2015	FY 2014	Difference	% change - Cumulative Sales	
	Ending	Week												
1	9/6/2014 *		\$54,911,801	\$58,587,757	(\$3,675,956)	-6.3%	\$17,482,488	\$22,369,499	(\$4,887,011)	-21.8%	\$72,394,289	\$80,957,256	(\$8,562,967)	-10.6%
2	9/13/2014		\$61,436,533	\$57,135,931	\$4,300,602	7.5%	\$19,097,081	\$25,412,980	(\$6,315,899)	-24.9%	\$80,533,614	\$82,548,911	(\$2,015,297)	-2.4%
3	9/20/2014		\$60,959,234	\$59,018,194	\$1,941,040	3.3%	\$20,567,894	\$29,161,241	(\$8,593,347)	-29.5%	\$81,527,128	\$88,179,435	(\$6,652,307)	-7.5%
4	9/27/2014		\$59,710,056	\$57,927,984	\$1,782,072	3.1%	\$19,920,828	\$20,012,313	(\$91,485)	-0.5%	\$79,630,884	\$77,940,297	\$1,690,588	2.2%
5	10/4/2014		\$62,119,854	\$62,146,816	(\$26,962)	0.0%	\$18,531,421	\$20,043,557	(\$1,512,136)	-7.5%	\$80,651,275	\$82,190,373	(\$1,539,098)	-1.9%
6	10/11/2014		\$61,253,665	\$60,867,582	\$386,083	0.6%	\$18,985,332	\$19,480,962	(\$495,631)	-2.5%	\$80,238,997	\$80,348,544	(\$109,548)	-0.1%
7	10/18/2014		\$60,230,048	\$60,612,193	(\$382,145)	-0.6%	\$19,538,402	\$20,079,610	(\$541,209)	-2.7%	\$79,768,450	\$80,691,803	(\$923,354)	-1.1%
8	10/25/2014		\$62,384,112	\$59,548,277	\$2,835,835	4.8%	\$21,475,643	\$19,319,928	\$2,155,715	11.2%	\$83,859,755	\$78,868,205	\$4,991,550	6.3%
9	11/1/2014		\$63,404,713	\$61,710,236	\$1,694,477	2.7%	\$23,568,817	\$18,308,976	\$5,259,842	28.7%	\$86,973,530	\$80,019,212	\$6,954,319	8.7%
10	11/8/2014		\$65,486,719	\$61,668,594	\$3,818,125	6.2%	\$23,749,032	\$19,555,070	\$4,193,963	21.4%	\$89,235,751	\$81,223,664	\$8,012,088	9.9%
11	11/15/2014			\$60,057,025				\$20,930,071				\$80,987,096		
12	11/22/2014			\$63,118,266				\$19,086,770				\$82,205,036		
13	11/29/2014			\$57,145,294				\$20,434,618				\$77,579,912		
14	12/6/2014			\$59,883,783				\$22,791,842				\$82,675,625		
15	12/13/2014			\$60,310,298				\$35,859,153				\$96,169,451		
16	12/20/2014			\$65,088,999				\$46,832,745				\$111,921,744		
17	12/27/2014			\$67,721,619				\$18,218,091				\$85,939,710		
18	1/3/2015			\$67,162,991				\$19,140,745				\$86,303,736		
19	1/10/2015			\$65,049,914				\$17,954,333				\$83,004,247		
20	1/17/2015			\$62,731,830				\$18,900,213				\$81,632,043		
21	1/24/2015			\$59,085,886				\$19,558,830				\$78,644,716		
22	1/31/2015			\$64,099,096				\$20,764,006				\$84,863,102		
23	2/7/2015			\$67,717,353				\$22,433,672				\$90,151,025		
24	2/14/2015			\$69,949,998				\$25,572,367				\$95,522,365		
25	2/21/2015			\$72,422,148				\$31,832,665				\$104,254,813		
26	2/28/2015			\$72,883,830				\$21,827,140				\$94,710,970		
27	3/7/2015			\$73,726,744				\$22,528,352				\$96,255,096		
28	3/14/2015			\$71,026,808				\$25,171,358				\$96,198,166		
29	3/21/2015			\$69,174,125				\$25,837,564				\$95,011,689		
30	3/28/2015			\$66,886,917				\$18,604,870				\$85,491,787		
31	4/4/2015			\$71,218,020				\$19,883,667				\$91,101,687		
32	4/11/2015			\$65,970,648				\$18,875,485				\$84,846,133		
33	4/18/2015			\$64,922,280				\$19,723,048				\$84,645,328		
34	4/25/2015			\$60,578,829				\$18,978,148				\$79,556,977		
35	5/2/2015			\$64,244,545				\$19,029,632				\$83,274,177		
36	5/9/2015			\$65,679,029				\$19,350,478				\$85,029,507		
37	5/16/2015			\$63,627,971				\$19,865,609				\$83,493,580		
38	5/23/2015			\$61,902,451				\$19,892,846				\$81,795,297		
39	5/30/2015			\$61,264,953				\$20,014,636				\$81,279,589		
40	6/6/2015			\$64,019,948				\$21,782,886				\$85,802,834		
41	6/13/2015			\$59,742,598				\$19,736,748				\$79,479,346		
42	6/20/2015			\$59,010,863				\$17,095,336				\$76,106,199		

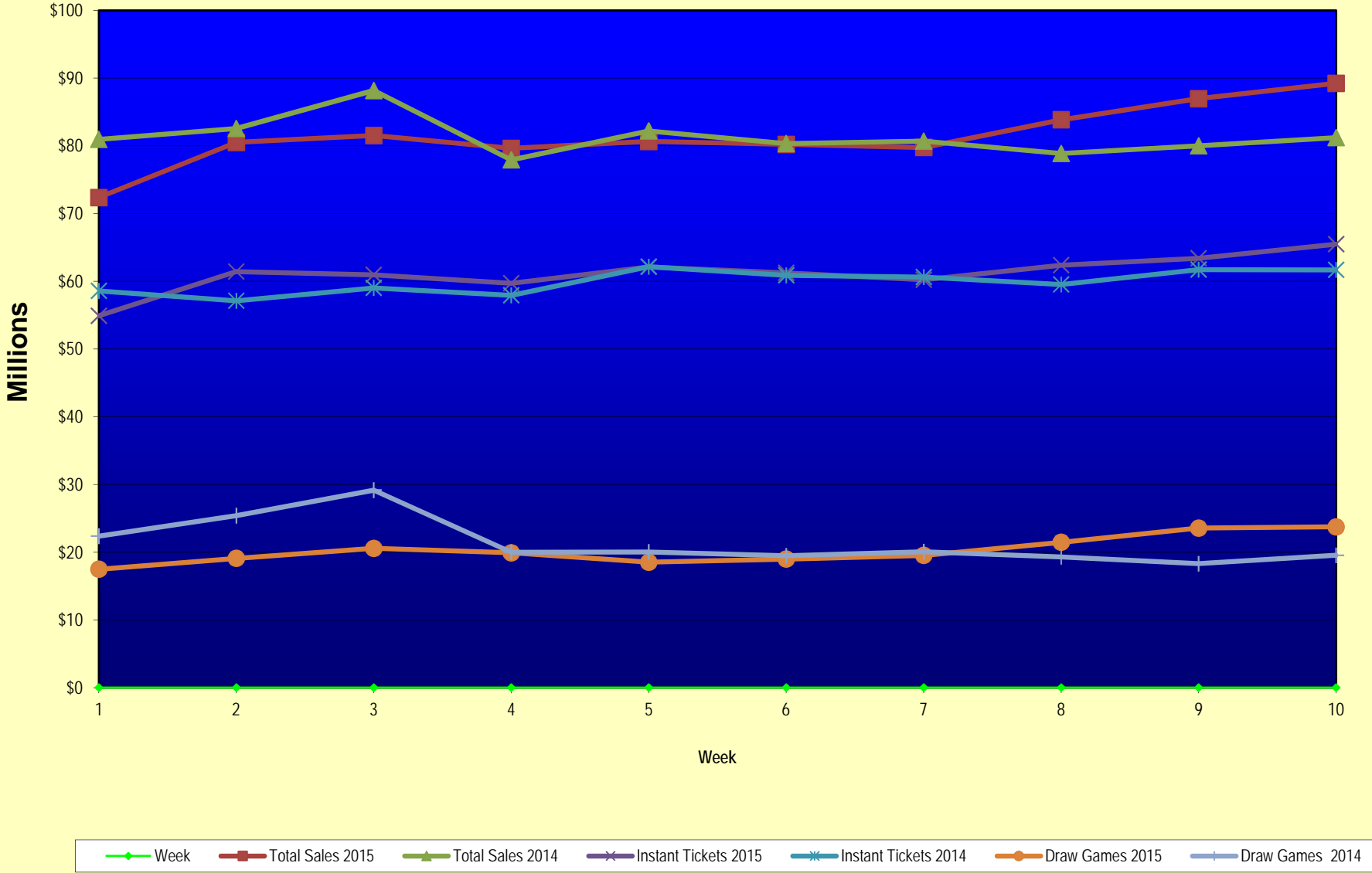
Texas Lottery Commission  
Fiscal Year Over Year Change in Sales  
Unaudited  
FY 2015 Compared to FY 2014

			INSTANT TICKETS				DRAW GAMES				TOTAL SALES			
FY 2015			FY 2015	FY 2014	Difference	% change - Cumulative Sales	FY 2015	FY 2014	Difference	% change - Cumulative Sales	FY 2015	FY 2014	Difference	% change - Cumulative Sales
Week	Week	Ending												
43	6/27/2015			\$58,102,191				\$17,635,736				\$75,737,927		
44	7/4/2015			\$61,566,071				\$18,521,529				\$80,087,600		
45	7/11/2015			\$58,729,674				\$17,913,387				\$76,643,061		
46	7/18/2015			\$58,202,035				\$17,602,032				\$75,804,067		
47	7/25/2015			\$57,220,932				\$17,736,889				\$74,957,821		
48	8/1/2015			\$64,207,294				\$18,208,743				\$82,416,037		
49	8/8/2015			\$60,066,007				\$19,022,945				\$79,088,952		
50	8/15/2015			\$58,374,809				\$18,567,246				\$76,942,055		
51	8/22/2015			\$57,277,475				\$18,916,460				\$76,193,935		
52	8/29/2015			\$61,884,256				\$17,283,925				\$79,168,181		
	8/31/2015 **			\$7,949,803				\$706,956				\$8,656,759		
Total thru Current Week			\$611,896,735	\$599,223,564	\$12,673,171	2.1%	\$202,916,937	\$213,744,133	(\$10,827,196)	-5.1%	\$814,813,672	\$812,967,697	\$1,845,975	0.2%
Fiscal Year Total			\$611,896,735	\$3,280,229,170			\$202,916,937	\$1,104,367,893			\$814,813,672	\$4,384,597,063		

\* FY 15 includes 6 days

\*\* FY 15 includes 2 days; FY 14 includes 1 day

### Texas Lottery Commission Fiscal Year Over Year Change in Sales



Note: Week 1 is not a full week of sales as this report is prepared on a Fiscal Year basis.

Texas Lottery Commission  
Instant Tickets by Price Point  
Sales, Prize Expense, Sales Contribution and Payout Percentage With Year Over Year Changes  
Unaudited

Fiscal Year	Price Point	# of Active Games	FY Sales	% of Instant Ticket Sales	Year over Year Change in Sales	FY Prize Expense	Year over Year Change in Prize Expense	FY Sales Contribution	Year over Year Change in Contribution	Average Prize Payout %	Year over Year Change in Payout %
2014	\$1.00	21	35,278,628	5.9%		21,141,946		14,136,682		59.9%	-1.3%
Through	\$2.00	27	72,944,556	12.2%		47,370,682		25,573,874		64.9%	-0.1%
11/9/2013	\$3.00	14	65,019,180	10.9%		42,571,464		22,447,716		65.5%	-0.1%
	\$5.00	34	195,987,930	32.7%		133,129,409		62,858,521		67.9%	-0.1%
	\$10.00	11	111,271,260	18.6%		78,621,518		32,649,742		70.7%	-0.6%
	\$20.00	8	95,999,660	16.0%		71,888,856		24,110,804		74.9%	0.0%
	\$50.00	2	22,722,350	3.8%		17,640,479		5,081,871		77.6%	0.0%
<b>Total</b>		<b>117</b>	<b>\$599,223,564</b>			<b>\$412,364,354</b>		<b>\$186,859,210</b>		<b>68.8%</b>	<b>-0.2%</b>
2015	\$1.00	16	31,076,774	5.1%		19,300,522		11,776,252		62.1%	3.7%
thru	\$2.00	24	64,351,798	10.5%		43,060,150		21,291,648		66.9%	3.2%
11/8/2014	\$3.00	11	61,110,483	10.0%		40,278,362		20,832,121		65.9%	0.4%
	\$5.00	33	195,380,380	31.9%		132,724,504		62,655,876		67.9%	0.0%
	\$10.00	13	125,629,380	20.5%		88,762,940		36,866,440		70.7%	0.5%
	\$20.00	8	106,029,520	17.3%		79,521,179		26,508,341		75.0%	0.2%
	\$50.00	3	28,318,400	4.6%		22,006,376		6,312,024		77.7%	0.0%
<b>Total</b>		<b>108</b>	<b>\$611,896,735</b>			<b>\$425,654,032</b>		<b>\$186,242,703</b>		<b>69.6%</b>	<b>0.9%</b>
Variance	\$1.00	-5	-4,201,854		-11.9%	-1,841,424	-8.7%	-2,360,430	-16.7%	2.18%	
2015 to	\$2.00	-3	-8,592,758		-11.8%	-4,310,532	-9.1%	-4,282,226	-16.7%	1.97%	
2014	\$3.00	-3	-3,908,697		-6.0%	-2,293,102	-5.4%	-1,615,595	-7.2%	0.44%	
	\$5.00	-1	-607,550		-0.3%	-404,905	-0.3%	-202,645	-0.3%	0.00%	
	\$10.00	2	14,358,120		12.9%	10,141,422	12.9%	4,216,698	12.9%	0.00%	
	\$20.00	0	10,029,860		10.4%	7,632,323	10.6%	2,397,537	9.9%	0.11%	
	\$50.00	1	5,596,050		24.6%	4,365,897	24.7%	1,230,153	24.2%	0.08%	
<b>Total</b>		<b>-9</b>	<b>\$12,673,171</b>		<b>2.1%</b>	<b>\$13,289,678</b>	<b>3.2%</b>	<b>-\$616,507</b>	<b>-0.3%</b>	<b>0.74%</b>	

Notes - Instant Ticket Variances

Texas Lottery Commission  
**Instant Tickets by Price Point**  
**Sales, Prize Expense, Sales Contribution and Payout Percentage With Year Over Year Changes**  
 Unaudited

		FY 2015		FY 2014		Difference
Sales	\$1 - \$5	\$351,919,435		\$369,230,294		-\$17,310,859
Prize Exp.	\$1 - \$5	\$235,363,537		\$244,213,500		-\$8,849,963
Sales Cont.	\$1 - \$5	\$116,555,898		\$125,016,794		-\$8,460,896
Prize Exp. %	\$1 - \$5	66.9%		66.1%		0.7%
		FY 2015		FY 2014		Difference
Sales	\$10 - \$50	\$259,977,300		\$229,993,270		\$29,984,030
Prize Exp.	\$10 - \$50	\$190,290,495		\$168,150,853		\$22,139,642
Sales Cont.	\$10 - \$50	\$69,686,805		\$61,842,417		\$7,844,388
Prize Exp. %	\$10 - \$50	73.2%		73.1%		0.1%
		FY 2015		FY 2014		Difference
Sales	Instant	\$611,896,735		\$599,223,564		\$12,673,171
Prize Exp.	Instant	\$425,654,032		\$412,364,354		\$13,289,678
Sales Cont.	Instant	\$186,242,703		\$186,859,210		-\$616,507
Prize Exp. %	Instant	69.6%		68.8%		0.7%

		FY 2015		FY 2014		Difference
Sales	\$1 - \$10	\$477,548,815		\$480,501,554		-\$2,952,739
Prize Exp.	\$1 - \$10	\$324,126,477		\$322,835,018		\$1,291,459
Sales Cont.	\$1 - \$10	\$153,422,338		\$157,666,536		-\$4,244,198
Prize Exp. %	\$1 - \$10	67.9%		67.2%		0.7%
		FY 2015		FY 2014		Difference
Sales	\$20 - \$50	\$134,347,920		\$118,722,010		\$15,625,910
Prize Exp.	\$20 - \$50	\$101,527,555		\$89,529,335		\$11,998,220
Sales Cont.	\$20 - \$50	\$32,820,365		\$29,192,675		\$3,627,690
Prize Exp. %	\$20 - \$50	75.6%		75.4%		0.2%
		FY 2015		FY 2014		Difference
Sales	Instant	\$611,896,735		\$599,223,564		\$12,673,171
Prize Exp.	Instant	\$425,654,032		\$412,364,354		\$13,289,678
Sales Cont.	Instant	\$186,242,703		\$186,859,210		-\$616,507
Prize Exp. %	Instant	69.6%		68.8%		0.7%



Texas Lottery Commission  
**Weekly Sales Summary**  
**& Comparison to Previous Week**  
 Unaudited

	Week Ending 11/08/2014	% of Sales	Week Ending 11/01/2014	% of Sales	\$ change	% change
	<u>THIS WEEK</u>		<u>LAST WEEK</u>			
Total Sales	<u>\$89,235,751</u>		<u>\$86,973,530</u>		<u>\$2,262,221</u>	2.60%
Instant Tickets	<u>\$65,486,719</u>	73.4%	<u>\$63,404,713</u>	72.9%	<u>\$2,082,006</u>	3.28%
Lotto	\$2,269,671	2.5%	\$2,289,864	2.6%	-\$20,193	-0.88%
Lotto Extra	\$345,144	0.4%	\$346,139	0.4%	-\$995	-0.29%
Pick 3	\$4,823,896	5.4%	\$4,620,420	5.3%	\$203,476	4.40%
Pick 3 Sum It Up	\$92,098	0.1%	\$87,141	0.1%	\$4,957	5.69%
Cash Five	\$958,406	1.1%	\$925,312	1.1%	\$33,094	3.58%
Texas Two Step	\$1,336,742	1.5%	\$993,957	1.1%	\$342,785	34.49%
Mega Millions	\$4,908,320	5.5%	\$5,950,540	6.8%	-\$1,042,220	-17.51%
Megaplier	\$1,013,337	1.1%	\$1,199,010	1.4%	-\$185,673	-15.49%
Daily 4	\$1,669,728	1.9%	\$1,554,893	1.8%	\$114,835	7.39%
Daily 4 Sum It Up	\$97,535	0.1%	\$93,945	0.1%	\$3,590	3.82%
Powerball	\$4,560,744	5.1%	\$3,903,664	4.5%	\$657,080	16.83%
Power Play	\$561,387	0.6%	\$494,803	0.6%	\$66,584	13.46%
All or Nothing	\$753,046	0.8%	\$733,770	0.8%	\$19,276	2.63%
Monopoly	\$358,980	0.4%	\$375,360	0.0%	-\$16,380	-4.36%
Total Draw Game Sales	<u>\$23,749,032</u>		<u>\$23,568,817</u>		<u>\$180,215</u>	0.76%

\* Totals may not sum due to rounding.

Texas Lottery Commission  
Weekly Sales Summary  
Unaudited

INSTANT TICKETS  
TOP TEN SELLING GAMES

For the Week Ending: 11/08/14

Rank	Price Point	Game	Sales (Millions)
1	\$ 20	HOLIDAY GAME BOOK	\$ 5.775
2	\$ 10	HOLIDAY MAGIC	\$ 3.939
3	\$ 10	\$200,000,000 CASH BLOWOUT	\$ 2.714
4	\$ 5	\$100,000 MERRY MONEY	\$ 2.559
5	\$ 3	LOTERIA	\$ 2.341
6	\$ 3	BONUS CASHWORD	\$ 2.314
7	\$ 50	MILLIONNAIRE'S CLUB	\$ 2.286
8	\$ 20	100X THE CASH	\$ 2.121
9	\$ 5	HOLIDAY GOLD	\$ 2.076
10	\$ 20	ONE MILLION CASH	\$ 2.011

Texas Lottery Commission  
Prize Payout Tracking Report  
Unaudited

Through the Week Ending: 11/08/14

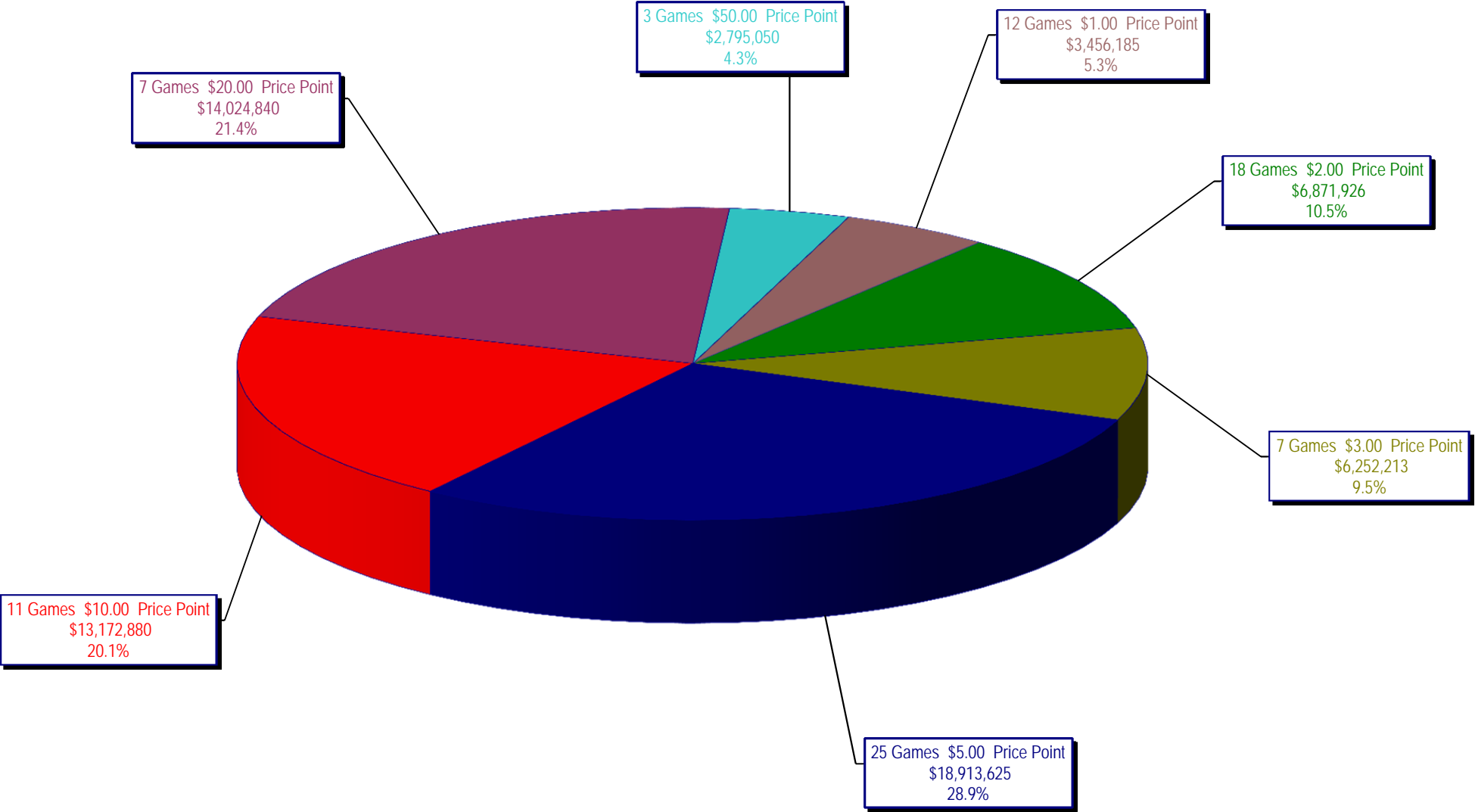
Draw Game Sales

		FY Sales Through Week Ending 11/8/2014		FY Prize Expense Through Week Ending 11/8/2014	Actual* Prize Payout	Base Payout (Prize Pool)
Lotto	\$	22,933,072	\$	11,567,457	50.44%	54.00%
Lotto Extra		3,453,753		1,844,726	53.41%	53.70%
Pick 3		47,190,758		22,243,810	47.14%	50.00%
Pick 3 Sum It Up		910,467		399,839	43.92%	50.00%
Cash Five		9,456,527		4,728,264	50.00%	50.00%
Texas Two Step		10,679,983		5,535,818	51.83%	50.00%
Mega Millions		34,053,693		17,396,951	51.09%	50.00%**
Megaplier		7,549,365		3,779,647	50.07%	N/A
Daily 4		15,696,373		7,501,250	47.79%	50.00%
Daily 4 Sum It Up		957,770		351,034	36.65%	50.00%
Powerball		36,550,187		18,337,474	50.17%	50.00%**
Power Play		4,675,947		2,345,962	50.17%	N/A
All or Nothing		7,607,292		5,336,990	70.16%	55.98%
Monopoly		1,201,750		2,527,611	210.33%	50.00%
<b>Totals</b>	\$	<b>202,916,937</b>	\$	<b>103,896,831</b>	<b>51.20%</b>	

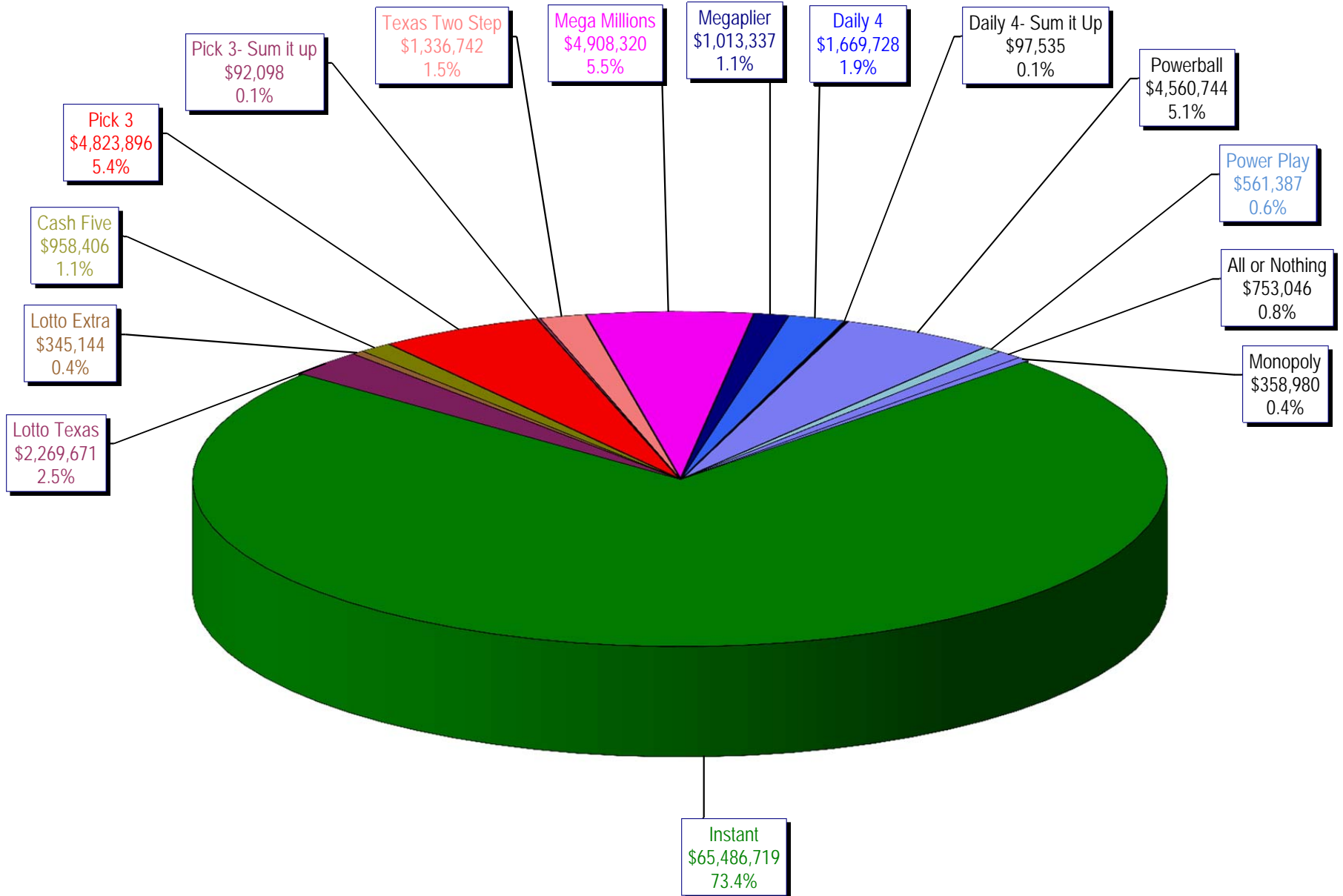
\* Before Unclaimed Prizes

\*\* Estimated; depends on # of guaranteed prizes won in Texas

Texas Lottery Commission  
Instant Ticket Sales  
For the Week Ending 11/08/14  
(Unaudited)



**Texas Lottery Commission**  
**All Game Sales**  
**For the Week Ending 11/08/14**  
**(Unaudited)**



Texas Lottery Commission - Weekly Sales Summary for FY 2015 (Unaudited)

Week Ended	Instant Games	New Games & Dates	Lotto Texas	Jackpot W	S	Lotto Extra	Pick 3	Pick 3 Sum It Up	Cash Five	Texas Two Step	Jackpot M	TH	Mega Millions	Jackpot T	F	Megaplier	Daily 4	Daily 4 Sum It Up	Powerball	Jackpot W	S	Power Play	All or Nothing	Monopoly	Jackpot F	Total	Per Cap.
9/06/2014*	62,861,604	1589 (\$1.N); 1592 (\$5.N) - 9/1/14	2,281,237	6	6.25	341,232	4,827,600	92,305	958,777	918,635	225	300	1,847,432	25	33	475,313	1,640,023	104,626	3,465,202	100	110	450,723	786,340			81,051,048	3.11
9/13/2014	61,436,533	0	2,299,834	6.5	6.75	344,225	4,787,666	91,850	960,067	1,214,553	425	575	1,992,737	41	52	501,468	1,571,433	97,036	3,957,407	127	149	497,718	781,088			80,533,614	3.09
9/20/2014	60,959,234	1647 (\$2.N); 1619 (\$5.N) - 9/15/14	2,307,003	7	7.25	347,119	4,624,949	89,960	952,214	1,582,291	750	925	2,149,120	62	72	528,733	1,536,913	95,355	4,985,548	171	196	597,868	770,822			81,527,128	3.13
9/27/2014	59,710,056	0	2,357,199	7.5	8.25	353,734	4,540,964	89,289	938,745	1,244,640	1,175	200	2,417,365	83	93	579,889	1,512,957	91,998	4,478,698	225	40	544,723	770,628			79,630,884	3.06
10/4/2014	62,119,854	0	2,385,322	9	9.5	360,937	4,942,321	94,197	971,047	854,141	200	200	2,966,004	105	120	682,825	1,588,795	98,392	2,443,237	50	60	348,166	786,038			80,651,275	3.09
10/11/2014	61,253,665	1608 (\$1.N); 1653 (\$5.N); 1651 (\$10.N) - 10/6/14	2,363,624	10.25	11	355,219	4,893,634	94,926	959,659	935,385	225	300	3,310,874	136	150	748,248	1,580,735	94,717	2,522,774	70	80	356,145	769,392			80,238,997	3.08
10/18/2014	60,230,048	0	2,267,582	11.5	5	343,643	4,664,420	92,081	946,399	842,255	200	225	3,839,669	166	180	841,086	1,522,939	90,307	2,937,145	90	100	398,723	752,154			79,768,450	3.06
10/25/2014	62,384,112	1655 (\$1.N); 1652 (\$2.N); 1638 (\$10.N); 1637 (\$20.N) - 10/20/14	2,201,043	5.25	5.5	330,460	4,585,640	89,676	933,854	823,726	200	225	4,755,898	200	224	990,074	1,560,894	96,697	3,449,128	110	125	444,897	746,246	467,410	15	83,859,755	3.22
11/1/2014	63,404,713	1648 (\$3.N) - 10/31/14	2,289,864	5.75	6	346,139	4,620,420	87,141	925,312	993,957	300	425	5,950,540	252	284	1,199,010	1,554,893	93,945	3,903,664	142	159	494,803	733,770	375,360	18	86,973,530	3.34
11/8/2014	65,486,719	1600 (\$2.N); 1656 (\$5.N); 11/3/14	2,269,671	6.25	6.5	345,144	4,823,896	92,098	958,406	1,336,742	550	700	4,908,320	321	15	1,013,337	1,669,728	97,535	4,560,744	178	203	561,387	753,046	358,980	21	89,235,751	3.42
weekly change	3.3%		-0.9%			-0.3%	4.4%	5.7%	3.6%	34.5%			-17.5%			-15.5%	7.4%	3.8%	16.8%			13.5%	2.6%	-4.4%			-4.4%
<b>SALES</b>			<b>SALES</b>			<b>SALES</b>	<b>SALES</b>	<b>SALES</b>	<b>SALES</b>	<b>SALES</b>			<b>SALES</b>			<b>SALES</b>	<b>SALES</b>	<b>SALES</b>	<b>SALES</b>			<b>SALES</b>	<b>SALES</b>	<b>SALES</b>		<b>SALES</b>	<b>% of Sales</b>
Calendar Year to date	2,831,999,011		114,192,585			16,487,316	217,900,043	4,297,046	44,255,408	48,914,528			129,569,727			29,926,931	71,478,543	4,409,951	160,884,303			20,385,884	38,385,089	1,201,750		3,734,288,115	100.0%
Fiscal Year to date 2015	611,896,735		22,933,072			3,453,753	47,190,758	910,467	9,456,527	10,679,983			34,053,693			7,549,365	15,696,373	957,770	36,550,187			4,675,947	7,607,292	1,201,750		814,813,672	100.0%
*Full week includes 1 day from FY14																											