



*WEEKLY SALES SUMMARY*

Unaudited

[Week Ending: 11/09/2013](#)

Texas Lottery Commission  
Fiscal Year to Date Sales Comparison  
Unaudited

Through the Week Ending 11/09/2013 (10 Weeks)

Sales by Game	FY 2012 *	FY 2013 **	FY 2014	\$ Change		% Change	
				FY 2014 to FY 2012	FY 2014 to FY 2013	FY 2014 to FY 2012	FY 2014 to FY 2013
Instants	\$ 549,040,370	\$ 576,783,467	\$ 599,223,564	\$ 50,183,194	\$ 22,440,097	9.1%	3.9%
Lotto Texas	34,862,050	32,229,635	26,167,654	-8,694,396	-6,061,981	-24.9%	-18.8%
Lotto Extra	-	-	3,283,270	3,283,270	3,283,270	-	-
Pick 3	52,303,558	51,351,631	48,394,394	-3,909,165	-2,957,237	-7.5%	-5.8%
Pick 3 Sum It Up	1,060,186	974,958	961,720	-98,466	-13,238	-9.3%	-1.4%
Cash Five	12,807,468	11,170,250	10,117,766	-2,689,702	-1,052,484	-21.0%	-9.4%
Texas Two Step	12,980,200	10,401,674	10,524,400	-2,455,800	122,726	-18.9%	1.2%
Mega Millions	27,891,961	21,439,467	25,925,284	-1,966,677	4,485,817	-7.1%	20.9%
Megaplier	6,351,063	4,942,310	5,741,929	-609,134	799,619	-9.6%	16.2%
Daily 4	12,161,980	13,532,906	15,790,516	3,628,536	2,257,610	29.8%	16.7%
Daily 4 Sum It Up	916,853	920,136	979,234	62,381	59,098	6.8%	6.4%
Powerball	27,998,093	32,744,427	50,778,809	22,780,716	18,034,382	81.4%	55.1%
Power Play	5,929,461	4,098,714	5,714,086	-215,375	1,615,372	-3.6%	39.4%
All or Nothing	-	19,650,491	9,365,072	9,365,072	-10,285,419	-	-52.3%
<b>Total</b>	<b>\$ 744,303,242</b>	<b>\$ 780,240,065</b>	<b>\$ 812,967,697</b>	<b>\$ 68,664,455</b>	<b>\$ 32,727,632</b>	<b>9.2%</b>	<b>4.2%</b>

\* 3 extra days

\*\* 1 extra day

Texas Lottery Commission  
Fiscal Year to Date Cumulative Average Sales Comparison  
Unaudited

Through the Week Ending 11/09/2013 (10 Weeks)

Sales by Game	FY 2012	FY 2013	FY 2014
Instant	\$ 7,521,101	\$ 8,123,711	\$ 8,560,337
Lotto Texas	477,562	453,939	373,824
Lotto Extra	-	-	46,904
Pick 3	716,487	723,262	691,348
Pick 3 Sum It Up	14,523	13,732	13,739
Cash Five	175,445	157,327	144,540
Texas Two Step	177,811	146,502	150,349
Mega Millions	382,082	301,964	370,361
Megaplier	87,001	69,610	82,028
Daily 4	166,602	190,604	225,579
Daily 4 Sum It Up	12,560	12,960	13,989
Powerball	383,536	461,189	725,412
Power Play	81,225	57,728	81,630
All or Nothing	- *	311,913	133,787
<b>Total</b>	<b>\$ <u>10,195,935</u></b>	<b>\$ <u>11,024,442</u></b>	<b>\$ <u>11,613,824</u></b>

thru 11/12/2011  
73 days

thru 11/10/2012  
71 days  
\*  
63 days

thru 11/9/2013  
70 days

Texas Lottery Commission  
Fiscal Year Over Year Change in Sales  
Unaudited  
FY 2014 Compared to FY 2013

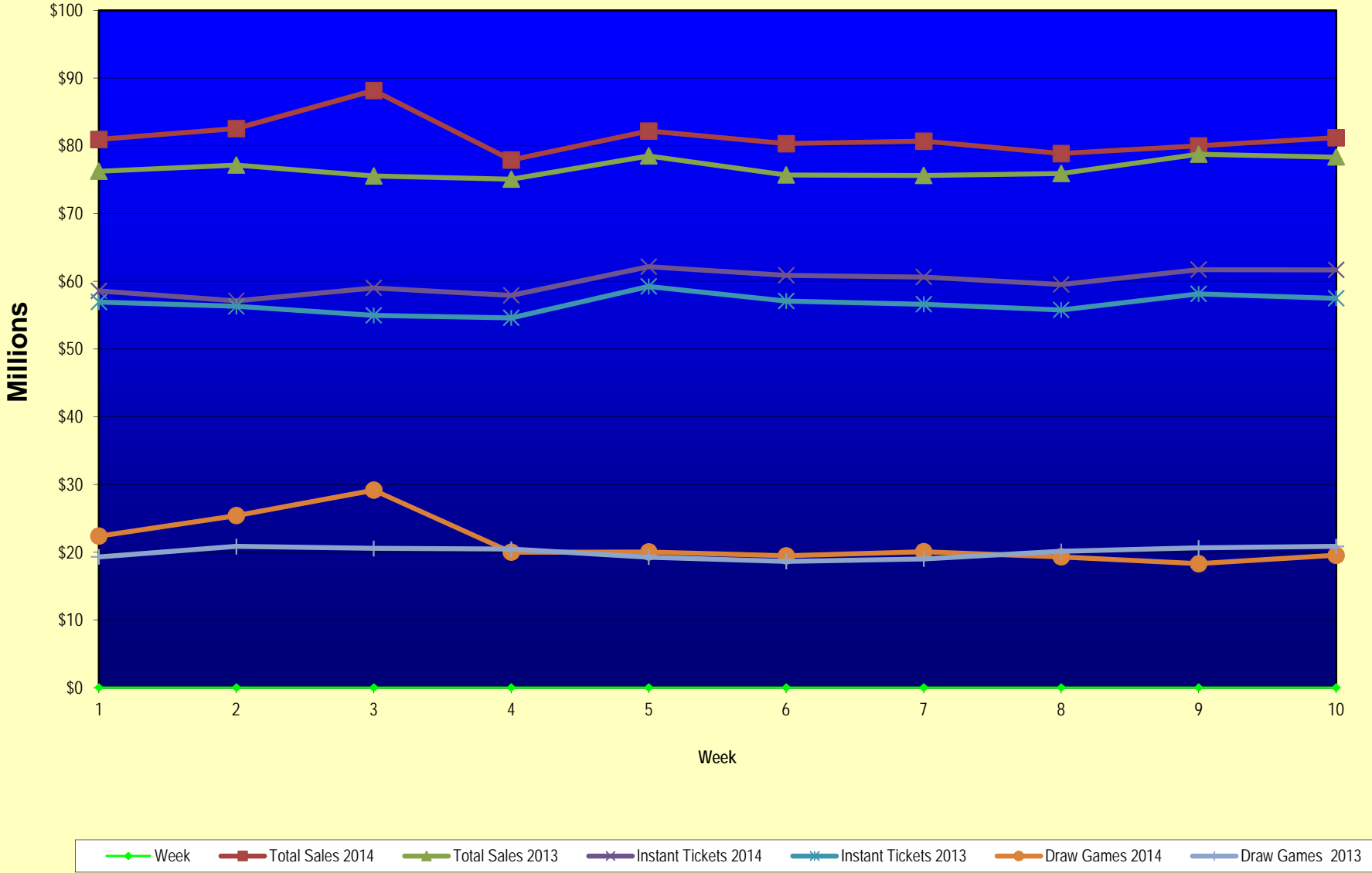
			INSTANT TICKETS				DRAW GAMES				TOTAL SALES			
FY 2014			% change -				% change -				% change -			
Week	Week	Ending	FY 2014	FY 2013	Difference	Cumulative Sales	FY 2014	FY 2013	Difference	Cumulative Sales	FY 2014	FY 2013	Difference	Cumulative Sales
0	9/1/2013 *		\$0	\$9,611,328	(\$9,611,328)	-100.0%	\$0	\$3,712,535	(\$3,712,535)	-100.0%	\$0	\$13,323,863	(\$13,323,863)	-100.0%
1	9/7/2013		\$58,587,757	\$56,941,761	\$1,645,996	2.9%	\$22,369,499	\$19,305,417	\$3,064,082	15.9%	\$80,957,256	\$76,247,178	\$4,710,078	6.2%
2	9/14/2013		\$57,135,931	\$56,302,875	\$833,056	1.5%	\$25,412,980	\$20,857,230	\$4,555,750	21.8%	\$82,548,911	\$77,160,105	\$5,388,806	7.0%
3	9/21/2013		\$59,018,194	\$54,974,438	\$4,043,756	7.4%	\$29,161,241	\$20,570,277	\$8,590,964	41.8%	\$88,179,435	\$75,544,715	\$12,634,720	16.7%
4	9/28/2013		\$57,927,984	\$54,606,674	\$3,321,310	6.1%	\$20,012,313	\$20,462,690	(\$450,378)	-2.2%	\$77,940,297	\$75,069,364	\$2,870,933	3.8%
5	10/5/2013		\$62,146,816	\$59,223,327	\$2,923,489	4.9%	\$20,043,557	\$19,279,973	\$763,584	4.0%	\$82,190,373	\$78,503,300	\$3,687,073	4.7%
6	10/12/2013		\$60,867,582	\$57,075,606	\$3,791,976	6.6%	\$19,480,962	\$18,638,467	\$842,496	4.5%	\$80,348,544	\$75,714,073	\$4,634,472	6.1%
7	10/19/2013		\$60,612,193	\$56,630,134	\$3,982,059	7.0%	\$20,079,610	\$18,998,943	\$1,080,668	5.7%	\$80,691,803	\$75,629,077	\$5,062,727	6.7%
8	10/26/2013		\$59,548,277	\$55,789,743	\$3,758,534	6.7%	\$19,319,928	\$20,130,190	(\$810,262)	-4.0%	\$78,868,205	\$75,919,933	\$2,948,273	3.9%
9	11/2/2013		\$61,710,236	\$58,142,777	\$3,567,459	6.1%	\$18,308,976	\$20,638,008	(\$2,329,032)	-11.3%	\$80,019,212	\$78,780,785	\$1,238,427	1.6%
10	11/9/2013		\$61,668,594	\$57,484,804	\$4,183,790	7.3%	\$19,555,070	\$20,862,872	(\$1,307,802)	-6.3%	\$81,223,664	\$78,347,676	\$2,875,988	3.7%
11	11/16/2013			\$55,805,228				\$21,660,705				\$77,465,933		
12	11/23/2013			\$61,331,977				\$27,172,853				\$88,504,830		
13	11/30/2013			\$58,420,598				\$62,797,943				\$121,218,541		
14	12/7/2013			\$62,489,745				\$19,630,155				\$82,119,900		
15	12/14/2013			\$59,661,880				\$20,064,982				\$79,726,862		
16	12/21/2013			\$63,556,886				\$19,084,653				\$82,641,539		
17	12/28/2013			\$63,547,886				\$17,359,874				\$80,907,760		
18	1/4/2014			\$60,452,721				\$18,833,047				\$79,285,768		
19	1/11/2014			\$58,862,997				\$18,879,167				\$77,742,164		
20	1/18/2014			\$58,494,057				\$19,258,004				\$77,752,061		
21	1/25/2014			\$57,871,744				\$20,093,215				\$77,964,959		
22	2/1/2014			\$61,846,715				\$21,032,335				\$82,879,050		
23	2/8/2014			\$70,374,906				\$21,183,638				\$91,558,544		
24	2/15/2014			\$71,002,438				\$19,295,197				\$90,297,635		
25	2/22/2014			\$71,203,934				\$19,729,989				\$90,933,923		
26	3/1/2014			\$74,551,567				\$20,278,327				\$94,829,894		
27	3/8/2014			\$75,360,138				\$21,447,763				\$96,807,901		
28	3/15/2014			\$70,065,528				\$22,055,563				\$92,121,091		
29	3/22/2014			\$70,137,284				\$28,709,024				\$98,846,308		
30	3/29/2014			\$68,758,522				\$18,597,091				\$87,355,613		
31	4/5/2014			\$73,270,054				\$20,048,992				\$93,319,046		
32	4/12/2014			\$64,738,900				\$19,697,793				\$84,436,693		
33	4/19/2014			\$63,252,072				\$20,245,083				\$83,497,155		
34	4/26/2014			\$62,766,647				\$21,162,888				\$83,929,535		
35	5/3/2014			\$66,251,082				\$23,628,101				\$89,879,183		
36	5/10/2014			\$65,748,723				\$26,735,480				\$92,484,203		
37	5/17/2014			\$63,348,463				\$61,124,604				\$124,473,067		
38	5/24/2014			\$60,537,133				\$18,730,138				\$79,267,271		
39	5/31/2014			\$58,547,555				\$18,317,891				\$76,865,446		
40	6/7/2014			\$62,113,508				\$18,374,935				\$80,488,443		

Texas Lottery Commission  
 Fiscal Year Over Year Change in Sales  
 Unaudited  
 FY 2014 Compared to FY 2013

			INSTANT TICKETS				DRAW GAMES				TOTAL SALES			
FY 2014			FY 2014	FY 2013	Difference	% change - Cumulative Sales	FY 2014	FY 2013	Difference	% change - Cumulative Sales	FY 2014	FY 2013	Difference	% change - Cumulative Sales
Week	Week	Ending												
41	6/14/2014			\$58,988,468				\$18,101,981				\$77,090,449		
42	6/21/2014			\$61,199,484				\$18,675,967				\$79,875,451		
43	6/28/2014			\$59,435,096				\$18,026,964				\$77,462,060		
44	7/5/2014			\$63,457,072				\$18,556,140				\$82,013,212		
45	7/12/2014			\$60,046,267				\$17,669,864				\$77,716,131		
46	7/19/2014			\$61,952,164				\$19,002,142				\$80,954,306		
47	7/26/2014			\$58,251,955				\$20,309,411				\$78,561,366		
48	8/2/2014			\$63,652,675				\$25,295,830				\$88,948,505		
49	8/9/2014			\$56,800,305				\$33,349,261				\$90,149,566		
50	8/16/2014			\$55,607,891				\$17,625,289				\$73,233,180		
51	8/23/2014			\$55,988,956				\$18,099,850				\$74,088,806		
52	8/30/2014			\$56,059,026				\$20,294,026				\$76,353,052		
Total thru Current Week			\$599,223,564	\$576,783,467	\$22,440,097	3.9%	\$213,744,133	\$203,456,598	\$10,287,535	5.1%	\$812,967,697	\$780,240,065	\$32,727,632	4.2%
Fiscal Year Total			\$599,223,564	\$3,222,593,714			\$213,744,133	\$1,153,692,742			\$812,967,697	\$4,376,286,456		

\* FY 13 includes 1 day

### Texas Lottery Commission Fiscal Year Over Year Change in Sales



Note: Week 1 is not a full week of sales as this report is prepared on a Fiscal Year basis.

Texas Lottery Commission  
Instant Tickets by Price Point  
Sales, Prize Expense, Sales Contribution and Payout Percentage With Year Over Year Changes  
Unaudited

Fiscal Year	Price Point	# of Active Games	FY Sales	% of Instant Ticket Sales	Year over Year Change in Sales	FY Prize Expense	Year over Year Change in Prize Expense	FY Sales Contribution	Year over Year Change in Contribution	Average Prize Payout %	Year over Year Change in Payout %
2013	\$1.00	24	34,119,219	5.9%		20,731,059		13,388,160		60.8%	0.2%
thru	\$2.00	25	72,570,852	12.6%		47,184,142		25,386,710		65.0%	-0.1%
11/10/2012	\$3.00	14	75,256,506	13.0%		49,356,071		25,900,435		65.6%	0.1%
	\$5.00	39	176,173,375	30.5%		119,588,333		56,585,042		67.9%	-0.2%
	\$7.00	2	10,854,935	1.9%		7,377,733		3,477,202		68.0%	0.0%
	\$10.00	11	96,115,330	16.7%		67,955,092		28,160,238		70.7%	-0.3%
	\$20.00	7	89,337,100	15.5%		66,866,918		22,470,182		74.8%	0.1%
	\$50.00	2	22,356,150	3.9%		17,358,517		4,997,633		77.6%	0.0%
<b>Total</b>		<b>124</b>	<b>\$576,783,467</b>			<b>\$396,417,864</b>		<b>\$180,365,603</b>		<b>68.7%</b>	<b>0.2%</b>
2014	\$1.00	21	35,278,628	5.9%		21,141,946		14,136,682		59.9%	-1.3%
thru	\$2.00	27	72,944,556	12.2%		47,370,682		25,573,874		64.9%	-0.1%
11/9/2013	\$3.00	14	65,019,180	10.9%		42,571,464		22,447,716		65.5%	-0.1%
	\$5.00	34	195,987,930	32.7%		133,129,409		62,858,521		67.9%	-0.1%
	\$7.00	0	0	0.0%		0		-		0.0%	0.0%
	\$10.00	11	111,271,260	18.6%		78,621,518		32,649,742		70.7%	-0.6%
	\$20.00	8	95,999,660	16.0%		71,888,856		24,110,804		74.9%	0.0%
	\$50.00	2	22,722,350	3.8%		17,640,479		5,081,871		77.6%	0.0%
<b>Total</b>		<b>117</b>	<b>\$599,223,564</b>			<b>\$412,364,354</b>		<b>\$186,859,210</b>		<b>68.8%</b>	<b>-0.2%</b>
Variance	\$1.00	-3	1,159,409		3.4%	410,886	2.0%	748,523	5.6%	-0.83%	
2014 to	\$2.00	2	373,704		0.5%	186,540	0.4%	187,164	0.7%	-0.08%	
2013	\$3.00	0	-10,237,326		-13.6%	-6,784,607	-13.7%	-3,452,719	-13.3%	-0.11%	
	\$5.00	-5	19,814,555		11.2%	13,541,076	11.3%	6,273,479	11.1%	0.05%	
	\$7.00	-2	-10,854,935		-100.0%	-7,377,733	-100.0%	-3,477,202	-100.0%	-67.97%	
	\$10.00	0	15,155,930		15.8%	10,666,426	15.7%	4,489,504	15.9%	-0.04%	
	\$20.00	1	6,662,560		7.5%	5,021,939	7.5%	1,640,621	7.3%	0.04%	
	\$50.00	0	366,200		1.6%	281,962	1.6%	84,238	1.7%	-0.01%	
<b>Total</b>		<b>-7</b>	<b>\$22,440,097</b>		<b>3.9%</b>	<b>\$15,946,489</b>	<b>4.0%</b>	<b>\$6,493,608</b>	<b>3.6%</b>	<b>0.10%</b>	

Notes - Instant Ticket Variances

Texas Lottery Commission  
**Instant Tickets by Price Point**  
**Sales, Prize Expense, Sales Contribution and Payout Percentage With Year Over Year Changes**  
 Unaudited

			FY 2014		FY 2013	Difference
Sales	\$1 - \$7	1	\$369,230,294		\$368,974,887	\$255,407
Prize Exp.	\$1 - \$7	1	\$244,213,500		\$244,237,338	-\$23,837
Sales Cont.	\$1 - \$7	1	\$125,016,794		\$124,737,549	\$279,244
Prize Exp. %	\$1 - \$7	1	66.1%		66.2%	-0.1%
			FY 2014		FY 2013	Difference
Sales	\$10 - \$50	2	\$229,993,270		\$207,808,580	\$22,184,690
Prize Exp.	\$10 - \$50	2	\$168,150,853		\$152,180,527	\$15,970,327
Sales Cont.	\$10 - \$50	1	\$61,842,417		\$55,628,053	\$6,214,363
Prize Exp. %	\$10 - \$50	2	73.1%		73.2%	-0.1%
			FY 2014		FY 2013	Difference
Sales	Instant		\$599,223,564		\$576,783,467	\$22,440,097
Prize Exp.	Instant		\$412,364,354		\$396,417,864	\$15,946,489
Sales Cont.	Instant		\$186,859,210		\$180,365,603	\$6,493,608
Prize Exp. %	Instant		68.8%		68.7%	0.1%

			FY 2014		FY 2013	Difference
Sales	\$1 - \$10		\$480,501,554		\$465,090,217	\$15,411,337
Prize Exp.	\$1 - \$10		\$322,835,018		\$312,192,430	\$10,642,588
Sales Cont.	\$1 - \$10		\$157,666,536		\$152,897,787	\$4,768,749
Prize Exp. %	\$1 - \$10		67.2%		67.1%	0.1%
			FY 2014		FY 2013	Difference
Sales	\$20 - \$50		\$118,722,010		\$111,693,250	\$7,028,760
Prize Exp.	\$20 - \$50		\$89,529,335		\$84,225,434	\$5,303,901
Sales Cont.	\$20 - \$50		\$29,192,675		\$27,467,816	\$1,724,859
Prize Exp. %	\$20 - \$50		75.4%		75.4%	0.0%
			FY 2014		FY 2013	Difference
Sales	Instant		\$599,223,564		\$576,783,467	\$22,440,097
Prize Exp.	Instant		\$412,364,354		\$396,417,864	\$15,946,489
Sales Cont.	Instant		\$186,859,210		\$180,365,603	\$6,493,608
Prize Exp. %	Instant		68.8%		68.7%	0.1%



Texas Lottery Commission  
**Weekly Sales Summary**  
**& Comparison to Previous Week**  
 Unaudited

	Week Ending 11/09/2013	% of Sales	Week Ending 11/02/2013	% of Sales	\$ change	% change
	<u>THIS WEEK</u>		<u>LAST WEEK</u>			
Total Sales	<u>\$81,223,664</u>		<u>\$80,019,212</u>		<u>\$1,204,452</u>	1.51%
Instant Tickets	<u>\$61,668,594</u>	75.9%	<u>\$61,710,236</u>	77.1%	<u>-\$41,642</u>	-0.07%
Lotto	\$2,396,719	3.0%	\$2,370,679	3.0%	\$26,040	1.10%
Lotto Extra	\$311,322	0.4%	\$307,933	0.4%	\$3,389	1.10%
Pick 3	\$4,959,973	6.1%	\$4,842,493	6.1%	\$117,481	2.43%
Pick 3 Sum It Up	\$98,589	0.1%	\$96,454	0.1%	\$2,135	2.21%
Cash Five	\$1,019,624	1.3%	\$1,006,508	1.3%	\$13,116	1.30%
Texas Two Step	\$1,380,347	1.7%	\$1,034,914	1.3%	\$345,433	33.38%
Mega Millions	\$2,599,262	3.2%	\$2,200,241	2.7%	\$399,021	18.14%
Megaplier	\$596,031	0.7%	\$518,514	0.6%	\$77,517	14.95%
Daily 4	\$1,673,137	2.1%	\$1,660,955	2.1%	\$12,183	0.73%
Daily 4 Sum It Up	\$105,122	0.1%	\$106,051	0.1%	-\$929	-0.88%
Powerball	\$3,109,692	3.8%	\$2,890,169	3.6%	\$219,523	7.60%
Power Play	\$407,994	0.5%	\$385,390	0.5%	\$22,604	5.87%
All or Nothing	\$897,258	1.1%	\$888,676	1.1%	\$8,582	0.97%
Total Draw Game Sales	<u>\$19,555,070</u>		<u>\$18,308,976</u>		<u>\$1,246,094</u>	6.81%

\* Totals may not sum due to rounding.

Texas Lottery Commission  
Weekly Sales Summary  
Unaudited

INSTANT TICKETS  
TOP TEN SELLING GAMES

For the Week Ending: 11/09/13

Rank	Price Point	Game	Sales (Millions)
1	\$ 10	GIFTS GALORE	\$ 3.799
2	\$ 10	SUPER WEEKLY GRAND	\$ 3.214
3	\$ 20	HOLIDAY MILLIONS	\$ 3.022
4	\$ 5	TRIM THE TREE	\$ 2.928
5	\$ 5	BONUS WEEKLY GRAND	\$ 2.561
6	\$ 3	LOTERIA TEXAS	\$ 2.151
7	\$ 20	\$1,000,000 JACKPOT	\$ 2.036
8	\$ 10	10X MEGA MONEY	\$ 2.013
9	\$ 20	20X CASH	\$ 1.992
10	\$ 5	\$75,000 CASHWORD-O-RAMA	\$ 1.923

Texas Lottery Commission  
Prize Payout Tracking Report  
Unaudited

Through the Week Ending 11/09/13

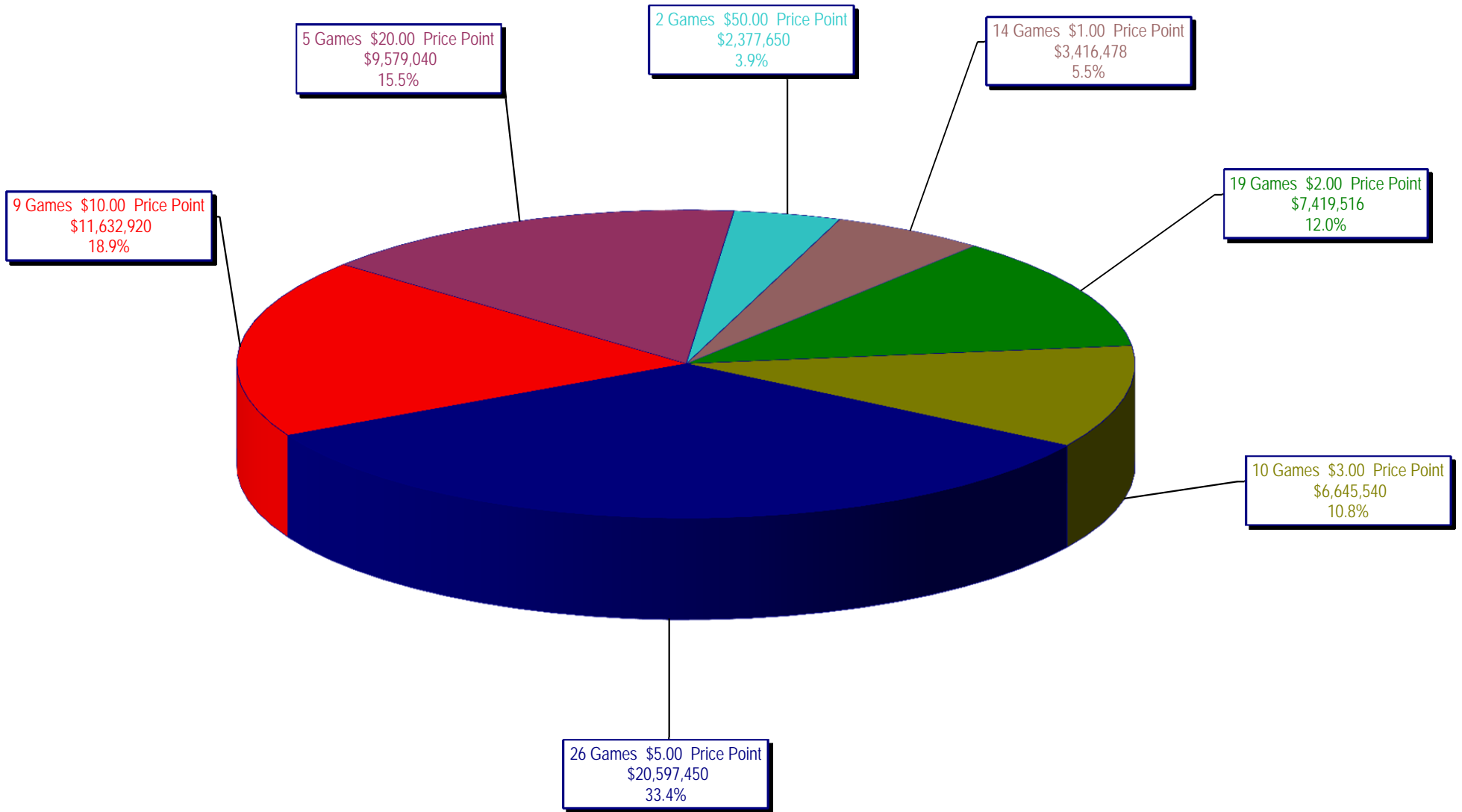
Draw Game Sales

		FY Sales Through Week Ending 11/9/2013		FY Prize Expense Through Week Ending 11/9/2013	Actual* Prize Payout	Base Payout (Prize Pool)
Lotto	\$	26,167,654	\$	14,253,107	54.47%	54.00%
Lotto Extra		3,283,270		1,813,532	55.24%	53.70%
Pick 3		48,394,394		24,074,730	49.75%	50.00%
Pick 3 Sum It Up		961,720		440,418	45.79%	50.00%
Cash Five		10,117,766		5,058,932	50.00%	50.00%
Texas Two Step		10,524,400		5,367,814	51.00%	50.00%
Mega Millions		25,925,284		12,874,592	49.66%	50.00%**
Megaplier		5,741,929		2,768,300	48.21%	N/A
Daily 4		15,790,516		9,459,375	59.91%	50.00%
Daily 4 Sum It Up		979,234		939,053	95.90%	50.00%
Powerball		50,778,809		24,527,039	48.30%	50.00%**
Power Play		5,714,086		2,103,165	36.81%	N/A
All or Nothing		9,365,072		5,002,628	53.42%	55.98%
<b>Totals</b>	\$	<b>213,744,133</b>	\$	<b>108,682,685</b>	<b>50.85%</b>	

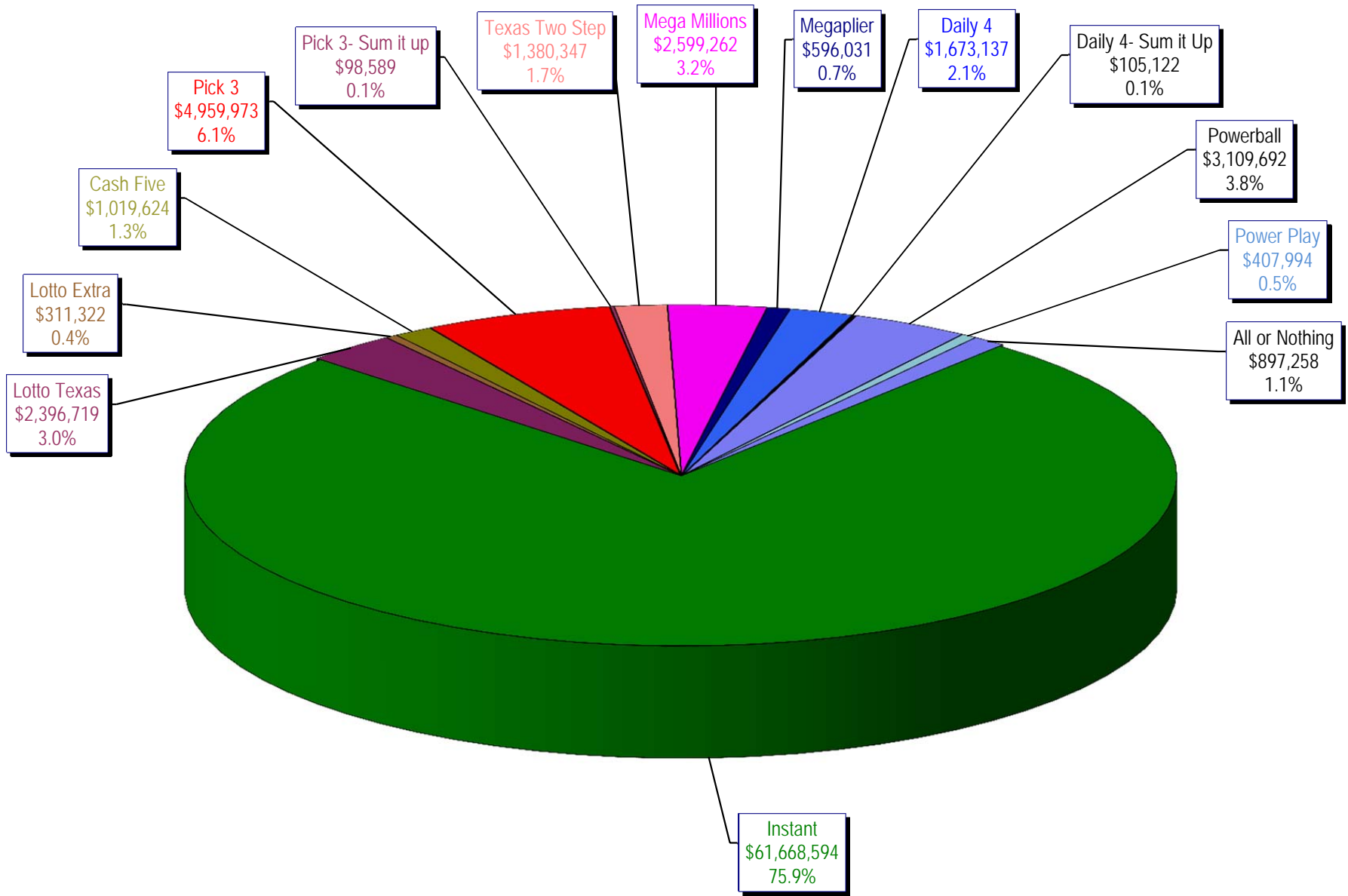
\* Before Unclaimed Prizes

\*\* Estimated; depends on # of guaranteed prizes won in Texas

Texas Lottery Commission  
Instant Ticket Sales  
For the Week Ending 11/09/13  
(Unaudited)



**Texas Lottery Commission**  
**All Game Sales**  
**For the Week Ending 11/09/13**  
**(Unaudited)**



Texas Lottery Commission - Weekly Sales Summary for FY 2014 (Unaudited)

Week Ended	Instant Games	New Games & Dates	Lotto Texas	Jackpot		Lotto Extra	Pick 3	Pick 3 Sum It Up	Cash Five	Texas Two Step	Jackpot		Mega Millions	Jackpot		Megaplier	Daily 4	Daily 4 Sum It Up	Powerball	Jackpot		Power Play	All or Nothing	Total	Per Cap.
				W	S						M	TH		T	F					W	S				
9/7/2013	58,587,757	0	2,677,829	8	9	329,933	4,945,500	89,456	1,036,149	1,417,992	600	775	2,409,195	85	95	540,148	1,453,721	84,220	5,730,736	169	203	650,070	1,004,550	80,957,256	3.11
9/14/2013	57,135,931	1554 (\$1.N); 1555 (\$2.N); 1556 (\$5.N); 1557 (\$10.N) - 09/09/13	2,667,851	9.75	10.75	331,113	4,795,787	98,347	1,011,617	1,209,874	1	200	2,942,905	106	119	623,938	1,431,261	87,188	8,313,548	245	317	861,842	1,037,710	82,548,911	3.17
9/21/2013	59,018,194	0	2,793,973	11.50	12.50	346,650	4,806,820	94,670	1,008,752	908,904	225	300	3,395,333	130	145	704,431	1,513,941	92,441	11,449,786	400	40	1,072,426	973,114	88,179,435	3.38
9/28/2013	57,927,984	1558 (\$2.N); 1523 (\$5.N) - 09/23/13	2,653,111	13.25	14	329,426	4,679,375	95,344	994,775	852,100	200	225	3,688,920	160	173	744,933	1,523,950	94,444	3,041,612	50	60	392,576	921,748	77,940,297	2.99
10/5/2013	62,146,816	0	2,758,867	15	15.75	341,320	5,022,201	105,398	1,038,159	842,921	200	200	2,878,147	189	12	615,856	1,694,849	108,583	3,263,494	70	86	416,767	956,996	82,190,373	3.15
10/12/2013	60,867,582	1560 (\$1.N); 1561 (\$5.N); 1562 (\$20.N) - 10/7/13	2,820,574	16.5	17.75	348,512	4,834,261	97,324	1,011,724	926,156	225	300	1,819,995	14	22	440,456	1,607,225	100,756	4,066,595	108	133	489,491	917,894	80,348,544	3.08
10/19/2013	60,612,193	0	2,709,127	18.5	19.5	339,742	4,805,913	93,251	998,546	1,120,862	425	575	1,852,326	29	37	442,957	1,595,838	97,700	4,606,577	156	186	533,660	883,112	80,691,803	3.10
10/26/2013	59,548,277	1563 (\$2.N); 1564 (\$5.N); 1571 (\$10.N) - 10/21/13	2,318,924	5	5.25	297,319	4,702,074	92,890	991,912	830,330	200	225	2,138,960	55	65	514,665	1,635,640	102,731	4,306,600	216	40	503,870	884,014	78,868,205	3.03
11/2/2013	61,710,236	0	2,370,679	5.5	5.75	307,933	4,842,493	96,454	1,006,508	1,034,914	300	425	2,200,241	75	87	518,514	1,660,955	106,051	2,890,169	50	60	385,390	888,676	80,019,212	3.07
11/9/2013	61,668,594	1572 (\$1.N); 1565 (\$2.N); 1524 (\$3.N); 1568 (\$5.N) - 11/4/13	2,396,719	6	6.25	311,322	4,959,973	98,589	1,019,624	1,380,347	550	750	2,599,262	99	115	596,031	1,673,137	105,122	3,109,692	70	87	407,994	897,258	81,223,664	3.12
weekly change	-0.1%		1.1%				2.4%	2.2%	1.3%	33.4%			18.1%			14.9%	0.7%	-0.9%	7.6%			5.9%	1.0%	1.5%	
	<b>SALES</b>		<b>SALES</b>			<b>SALES</b>	<b>SALES</b>	<b>SALES</b>	<b>SALES</b>	<b>SALES</b>	<b>SALES</b>	<b>SALES</b>	<b>SALES</b>	<b>SALES</b>	<b>SALES</b>	<b>SALES</b>	<b>SALES</b>	<b>SALES</b>	<b>SALES</b>	<b>SALES</b>	<b>SALES</b>	<b>SALES</b>	<b>SALES</b>	<b>SALES</b>	<b>% of Sales</b>
Calendar Year to date	2,803,222,827		119,444,396			9,743,175	228,927,944	4,361,748	47,262,502	50,937,510			102,447,476			23,218,895	67,534,678	4,239,720	246,091,979			26,796,155	41,545,645	3,775,774,650	100.0%
Fiscal Year to date 2014	599,223,564		26,167,654			3,283,270	48,394,394	961,720	10,117,766	10,524,400			25,925,284			5,741,929	15,790,516	979,234	50,778,809			5,714,086	9,365,072	812,967,697	100.0%