



WEEKLY SALES SUMMARY

Unaudited

[Week Ending: 11/10/2012](#)

Texas Lottery Commission
Fiscal Year to Date Sales Comparison
Unaudited

Through the week ending 11/10/2012 (11 weeks)

Sales by Game	FY 2011 *	FY 2012 **	FY 2013	\$ Change		% Change	
				FY 2013 to FY 2011	FY 2013 to FY 2012	FY 2013 to FY 2011	FY 2013 to FY 2012
Instants	\$ 533,748,482	\$ 549,040,370	\$ 576,783,467	\$ 43,034,985	\$ 27,743,097	8.1%	5.1%
Lotto Texas	34,811,881	34,862,050	32,229,635	-2,582,246	-2,632,415	-7.4%	-7.6%
Pick 3	55,063,655	52,303,558	51,351,631	-3,712,025	-951,928	-6.7%	-1.8%
Pick 3 Sum It Up	1,120,951	1,060,186	974,958	-145,994	-85,228	-13.0%	-8.0%
Cash Five	12,967,386	12,807,468	11,170,250	-1,797,136	-1,637,218	-13.9%	-12.8%
Texas Two Step	9,098,565	12,980,200	10,401,674	1,303,109	-2,578,526	14.3%	-19.9%
Mega Millions	26,820,956	27,891,961	21,439,467	-5,381,489	-6,452,494	-20.1%	-23.1%
Megaplier	6,015,919	6,351,063	4,942,310	-1,073,609	-1,408,753	-17.8%	-22.2%
Daily 4	11,351,982	12,161,980	13,532,906	2,180,925	1,370,927	19.2%	11.3%
Daily 4 Sum It Up	890,752	916,853	920,136	29,385	3,283	3.3%	0.4%
Powerball	17,812,951	27,998,093	32,744,427	14,931,476	4,746,334	83.8%	17.0%
Power Play	4,242,590	5,929,461	4,098,714	-143,876	-1,830,747	-3.4%	-30.9%
All or Nothing	-	-	19,650,491	19,650,491	19,650,491	-	-
Total	\$ 713,946,069	\$ 744,303,242	\$ 780,240,065	\$ 66,293,996	\$ 35,936,823	9.3%	4.8%

* 3 extra days

** 2 extra days

Texas Lottery Commission
 Fiscal Year to Date Cumulative Average Sales Comparison
 Unaudited

Through the week ending 11/10/2012 (11 weeks)

Sales by Game	FY 2011	FY 2012	FY 2013
Instant	\$ 7,212,817	\$ 7,521,101	\$ 8,123,711
Lotto Texas	470,431	477,562	453,939
Pick 3	744,103	716,487	723,262
Pick 3 Sum It Up	15,148	14,523	13,732
Cash Five	175,235	175,445	157,327
Texas Two Step	122,954	177,811	146,502
Mega Millions	362,445	382,082	301,964
Megaplier	81,296	87,001	69,610
Daily 4	153,405	166,602	190,604
Daily 4 Sum It Up	12,037	12,560	12,960
Powerball	240,716	383,536	461,189
Power Play	57,332	81,225	57,728
All or Nothing	-	-	311,913 *
Total	\$ <u>9,647,920</u>	\$ <u>10,195,935</u>	\$ <u>11,024,442</u>
	thru 11/13/2010 74 days	thru 11/12/2011 73 days	thru 11/10/2012 71 days * 63 days

Texas Lottery Commission
Fiscal Year Over Year Change in Sales
Unaudited
FY 2013 Compared to FY 2012

Week	FY 2013 Week Ending	INSTANT TICKETS				DRAW GAMES				TOTAL SALES			
		FY 2013	FY 2012	Difference	% change - Cumulative Sales	FY 2013	FY 2012	Difference	% change - Cumulative Sales	FY 2013	FY 2012	Difference	% change - Cumulative Sales
1	9/1/2012**	\$9,611,328	\$25,147,181	(\$15,535,853)	-61.8%	\$3,712,535	\$9,704,561	(\$5,992,026)	-61.7%	\$13,323,863	\$34,851,742	(\$21,527,879)	-61.8%
2	9/8/2012	\$56,941,761	\$50,591,068	\$6,350,693	12.6%	\$19,305,417	\$17,681,853	\$1,623,564	9.2%	\$76,247,178	\$68,272,921	\$7,974,257	11.7%
3	9/15/2012	\$56,302,875	\$49,835,063	\$6,467,812	13.0%	\$20,857,230	\$16,842,326	\$4,014,904	23.8%	\$77,160,105	\$66,677,389	\$10,482,716	15.7%
4	9/22/2012	\$54,974,438	\$49,777,138	\$5,197,300	10.4%	\$20,570,277	\$17,504,800	\$3,065,477	17.5%	\$75,544,715	\$67,281,938	\$8,262,777	12.3%
5	9/29/2012	\$54,606,674	\$51,040,274	\$3,566,400	7.0%	\$20,462,690	\$18,653,100	\$1,809,591	9.7%	\$75,069,364	\$69,693,374	\$5,375,991	7.7%
6	10/6/2012	\$59,223,327	\$53,715,157	\$5,508,170	10.3%	\$19,279,973	\$17,225,680	\$2,054,293	11.9%	\$78,503,300	\$70,940,837	\$7,562,463	10.7%
7	10/13/2012	\$57,075,606	\$51,942,121	\$5,133,485	9.9%	\$18,638,467	\$17,854,980	\$783,487	4.4%	\$75,714,073	\$69,797,101	\$5,916,972	8.5%
8	10/20/2012	\$56,630,134	\$52,837,769	\$3,792,365	7.2%	\$18,998,943	\$19,558,519	(\$559,577)	-2.9%	\$75,629,077	\$72,396,288	\$3,232,789	4.5%
9	10/27/2012	\$55,789,743	\$52,206,644	\$3,583,099	6.9%	\$20,130,190	\$21,504,565	(\$1,374,376)	-6.4%	\$75,919,933	\$73,711,209	\$2,208,724	3.0%
10	11/3/2012	\$58,142,777	\$56,265,310	\$1,877,467	3.3%	\$20,638,008	\$20,870,086	(\$232,079)	-1.1%	\$78,780,785	\$77,135,396	\$1,645,389	2.1%
11	11/10/2012	\$57,484,804	\$55,682,645	\$1,802,159	3.2%	\$20,862,872	\$17,862,404	\$3,000,468	16.8%	\$78,347,676	\$73,545,049	\$4,802,627	6.5%
12	11/17/2012		\$54,978,079				\$17,879,985				\$72,858,064		
13	11/24/2012		\$53,942,448				\$16,877,145				\$70,819,593		
14	12/1/2012		\$57,153,469				\$18,298,636				\$75,452,105		
15	12/8/2012		\$55,318,284				\$19,033,326				\$74,351,610		
16	12/15/2012		\$58,612,629				\$20,045,279				\$78,657,908		
17	12/22/2012		\$60,628,256				\$22,572,986				\$83,201,242		
18	12/29/2012		\$63,065,007				\$19,948,521				\$83,013,528		
19	1/5/2013		\$60,479,896				\$17,331,888				\$77,811,784		
20	1/12/2013		\$57,689,526				\$17,568,732				\$75,258,258		
21	1/19/2013		\$58,704,854				\$19,886,540				\$78,591,394		
22	1/26/2013		\$57,611,325				\$20,641,697				\$78,253,022		
23	2/2/2013		\$65,553,366				\$23,689,855				\$89,243,221		
24	2/9/2013		\$75,070,485				\$28,361,583				\$103,432,068		
25	2/16/2013		\$66,679,947				\$19,588,615				\$86,268,562		
26	2/23/2013		\$64,868,899				\$19,965,388				\$84,834,287		
27	3/2/2013		\$67,135,065				\$20,947,181				\$88,082,246		
28	3/9/2013		\$68,299,006				\$22,152,639				\$90,451,645		
29	3/16/2013		\$65,013,692				\$23,351,718				\$88,365,410		
30	3/23/2013		\$64,035,255				\$27,416,609				\$91,451,864		
31	3/30/2013		\$65,135,991				\$84,628,987				\$149,764,978		
32	4/6/2013		\$66,860,957				\$19,899,400				\$86,760,357		
33	4/13/2013		\$64,028,898				\$20,220,141				\$84,249,039		
34	4/20/2013		\$63,623,892				\$20,974,282				\$84,598,174		
35	4/27/2013		\$61,743,623				\$20,267,388				\$82,011,011		
36	5/4/2013		\$64,851,962				\$20,642,982				\$85,494,944		
37	5/11/2013		\$65,472,556				\$19,140,768				\$84,613,324		
38	5/18/2013		\$60,572,658				\$18,342,814				\$78,915,472		
39	5/25/2013		\$58,959,028				\$18,618,060				\$77,577,088		
40	6/1/2013		\$57,409,086				\$19,014,645				\$76,423,731		
41	6/8/2013		\$59,845,545				\$20,527,958				\$80,373,503		
42	6/15/2013		\$57,021,498				\$19,386,186				\$76,407,684		

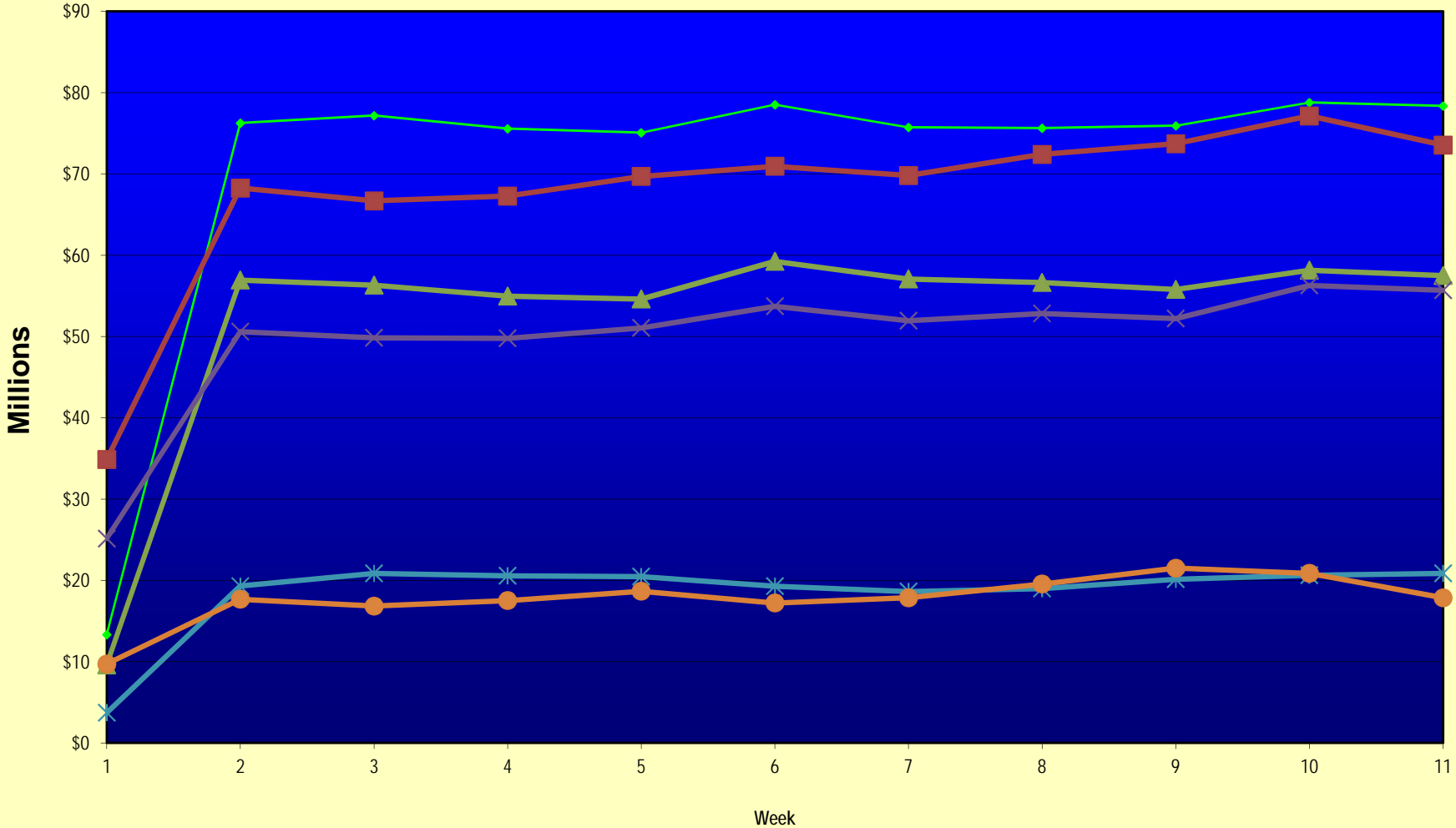
Note: Week 1 is not a full week of sales as this report is prepared on a Fiscal Year basis.

Texas Lottery Commission
Fiscal Year Over Year Change in Sales
Unaudited
FY 2013 Compared to FY 2012

Week	FY 2013 Week Ending	INSTANT TICKETS				DRAW GAMES				TOTAL SALES			
		FY 2013	FY 2012	Difference	% change - Cumulative Sales	FY 2013	FY 2012	Difference	% change - Cumulative Sales	FY 2013	FY 2012	Difference	% change - Cumulative Sales
43	6/22/2013		\$57,892,076				\$17,594,154				\$75,486,230		
44	6/29/2013		\$57,497,435				\$18,153,658				\$75,651,093		
45	7/6/2013		\$60,345,000				\$19,059,152				\$79,404,152		
46	7/13/2013		\$57,683,321				\$18,751,043				\$76,434,364		
47	7/20/2013		\$57,083,343				\$18,769,201				\$75,852,544		
48	7/27/2013		\$54,006,781				\$18,934,103				\$72,940,884		
49	8/3/2013		\$56,557,409				\$20,206,705				\$76,764,114		
50	8/10/2013		\$57,799,452				\$22,832,120				\$80,631,572		
51	8/17/2013		\$54,845,724				\$25,435,624				\$80,281,348		
52	8/24/2013		\$55,661,277				\$17,524,474				\$73,185,751		
	8/31/2013		\$47,363,984				\$14,929,528				\$62,293,512		
Total thru Current Week		\$576,783,467	\$549,040,370	\$27,743,097	5.1%	\$203,456,598	\$195,262,872	\$8,193,726	4.2%	\$780,240,065	\$744,303,242	\$35,936,823	4.8%
Fiscal Year Total		\$576,783,467	\$3,086,141,354			\$203,456,598	\$1,104,674,559			\$780,240,065	\$4,190,815,913		

** FY 2012 includes 3 days; FY 2013 includes 1 day.

Texas Lottery Commission Fiscal Year Over Year Change in Sales



◆ Total Sales 2013
 ■ Total Sales 2012
 ▲ Instant Tickets 2013
 × Instant Tickets 2012
 ✱ Draw Games 2013
 ● Draw Games 2012

Note: Week 1 is not a full week of sales as this report is prepared on a Fiscal Year basis.

Texas Lottery Commission
Instant Tickets by Price Point
Sales, Prize Expense, Sales Contribution and Payout Percentage With Year Over Year Changes
Unaudited

Fiscal Year	Price Point	# of Active Games	FY Sales	% of Instant Ticket Sales	Year over Year Change in Sales	FY Prize Expense	Year over Year Change in Prize Expense	FY Sales Contribution	Year over Year Change in Contribution	Average Prize Payout %	Year over Year Change in Payout %
2012	\$1.00	24	39,014,751	7.1%		23,765,619		15,249,132		60.9%	0.3%
thru	\$2.00	24	76,426,264	13.9%		49,708,772		26,717,492		65.0%	-0.8%
11/12/2011	\$3.00	14	67,666,437	12.3%		44,404,648		23,261,789		65.6%	0.0%
	\$5.00	29	168,821,025	30.7%		114,789,553		54,031,472		68.0%	0.1%
	\$7.00	4	14,605,003	2.7%		9,931,262		4,673,741		68.0%	0.0%
	\$10.00	13	90,190,120	16.4%		63,583,483		26,606,637		70.5%	-0.7%
	\$20.00	5	76,860,620	14.0%		57,319,960		19,540,660		74.6%	-0.1%
	\$50.00	1	15,456,150	2.8%		12,005,062		3,451,088		77.7%	0.1%
Total		114	\$549,040,370			\$375,508,361		\$173,532,009		68.4%	-0.1%
2013	\$1.00	24	34,119,219	5.9%		20,731,059		13,388,160		60.8%	0.2%
thru	\$2.00	25	72,570,852	12.6%		47,184,142		25,386,710		65.0%	-0.1%
11/10/2012	\$3.00	14	75,256,506	13.0%		49,356,071		25,900,435		65.6%	0.1%
	\$5.00	39	176,173,375	30.5%		119,588,333		56,585,042		67.9%	-0.2%
	\$7.00	2	10,854,935	1.9%		7,377,733		3,477,202		68.0%	0.0%
	\$10.00	11	96,115,330	16.7%		67,955,092		28,160,238		70.7%	-0.3%
	\$20.00	7	89,337,100	15.5%		66,866,918		22,470,182		74.8%	0.1%
	\$50.00	2	22,356,150	3.9%		17,358,517		4,997,633		77.6%	0.0%
Total		124	\$576,783,467			\$396,417,864		\$180,365,603		68.7%	0.2%
Variance	\$1.00	0	-4,895,532		-12.5%	-3,034,560	-12.8%	-1,860,972	-12.2%	-0.15%	
2013 to	\$2.00	1	-3,855,412		-5.0%	-2,524,630	-5.1%	-1,330,782	-5.0%	-0.02%	
2012	\$3.00	0	7,590,069		11.2%	4,951,423	11.2%	2,638,646	11.3%	-0.04%	
	\$5.00	10	7,352,350		4.4%	4,798,779	4.2%	2,553,571	4.7%	-0.11%	
	\$7.00	-2	-3,750,068		-25.7%	-2,553,529	-25.7%	-1,196,539	-25.6%	-0.03%	
	\$10.00	-2	5,925,210		6.6%	4,371,609	6.9%	1,553,601	5.8%	0.20%	
	\$20.00	2	12,476,480		16.2%	9,546,957	16.7%	2,929,523	15.0%	0.27%	
	\$50.00	1	6,900,000		44.6%	5,353,455	44.6%	1,546,545	44.8%	-0.03%	
Total		10	\$27,743,097		5.1%	\$20,909,504	5.6%	\$6,833,593	3.9%	0.34%	

Notes - Instant Ticket Variances

Texas Lottery Commission
Instant Tickets by Price Point
Sales, Prize Expense, Sales Contribution and Payout Percentage With Year Over Year Changes
 Unaudited

			FY 2013		FY 2012	Difference
Sales	\$1 - \$7		\$368,974,887		\$366,533,480	\$2,441,407
Prize Exp.	\$1 - \$7		\$244,237,338		\$242,599,855	\$1,637,483
Sales Cont.	\$1 - \$7		\$124,737,549		\$123,933,625	\$803,924
Prize Exp. %	\$1 - \$7		66.2%		66.2%	0.0%
			FY 2013		FY 2012	Difference
Sales	\$10 - \$50		\$207,808,580		\$182,506,890	\$25,301,690
Prize Exp.	\$10 - \$50		\$152,180,527		\$132,908,506	\$19,272,021
Sales Cont.	\$10 - \$50		\$55,628,053		\$49,598,384	\$6,029,669
Prize Exp. %	\$10 - \$50		73.2%		72.8%	0.4%
			FY 2013		FY 2012	Difference
Sales	Instant		\$576,783,467		\$549,040,370	\$27,743,097
Prize Exp.	Instant		\$396,417,864		\$375,508,361	\$20,909,504
Sales Cont.	Instant		\$180,365,603		\$173,532,009	\$6,833,593
Prize Exp. %	Instant		68.7%		68.4%	0.3%

			FY 2013		FY 2012	Difference
Sales	\$1 - \$10		\$465,090,217		\$456,723,600	\$8,366,617
Prize Exp.	\$1 - \$10		\$312,192,430		\$306,183,339	\$6,009,091
Sales Cont.	\$1 - \$10		\$152,897,787		\$150,540,261	\$2,357,526
Prize Exp. %	\$1 - \$10		67.1%		67.0%	0.1%
			FY 2013		FY 2012	Difference
Sales	\$20 - \$50		\$111,693,250		\$92,316,770	\$19,376,480
Prize Exp.	\$20 - \$50		\$84,225,434		\$69,325,022	\$14,900,412
Sales Cont.	\$20 - \$50		\$27,467,816		\$22,991,748	\$4,476,068
Prize Exp. %	\$20 - \$50		75.4%		75.1%	0.3%
			FY 2013		FY 2012	Difference
Sales	Instant		\$576,783,467		\$549,040,370	\$27,743,097
Prize Exp.	Instant		\$396,417,864		\$375,508,361	\$20,909,504
Sales Cont.	Instant		\$180,365,603		\$173,532,009	\$6,833,593
Prize Exp. %	Instant		68.7%		68.4%	0.3%

Texas Lottery Commission
Weekly Sales Summary
& Comparison to Previous Week
 Unaudited

	Week Ending 11/10/2012	% of Sales	Week Ending 11/03/2012	% of Sales	\$ change	% change
	<u>THIS WEEK</u>		<u>LAST WEEK</u>			
Total Sales	<u>\$78,347,676</u>		<u>\$78,780,785</u>		<u>-\$433,109</u>	-0.55%
Instant Tickets	<u>\$57,484,804</u>	73.4%	<u>\$58,142,777</u>	73.8%	<u>-\$657,973</u>	-1.13%
Lotto	\$3,061,999	3.9%	\$3,392,650	4.3%	-\$330,651	-9.75%
Pick 3	\$5,468,924	7.0%	\$5,501,964	7.0%	-\$33,040	-0.60%
Pick 3 Sum It Up	\$100,767	0.1%	\$101,742	0.1%	-\$976	-0.96%
Cash Five	\$1,083,928	1.4%	\$1,078,593	1.4%	\$5,335	0.49%
Texas Two Step	\$837,666	1.1%	\$860,073	1.1%	-\$22,407	-2.61%
Mega Millions	\$1,783,099	2.3%	\$1,950,117	2.5%	-\$167,018	-8.56%
Megaplier	\$430,343	0.5%	\$462,385	0.6%	-\$32,042	-6.93%
Daily 4	\$1,402,194	1.8%	\$1,393,099	1.8%	\$9,095	0.65%
Daily 4 Sum It Up	\$94,451	0.1%	\$93,773	0.1%	\$678	0.72%
Powerball	\$4,246,246	5.4%	\$3,466,242	4.4%	\$780,004	22.50%
Power Play	\$491,538	0.6%	\$424,170	0.5%	\$67,368	15.88%
All or Nothing	\$1,861,718	2.4%	\$1,913,200	2.4%	-\$51,482	-2.69%
Total Draw Game Sales	<u>\$20,862,872</u>		<u>\$20,638,008</u>		<u>\$224,864</u>	1.09%

* Totals may not sum due to rounding.

Texas Lottery Commission
Weekly Sales Summary
Unaudited

INSTANT TICKETS
TOP TEN SELLING GAMES

For the Week Ending: 11/10/12

Rank	Price Point	Game	Sales (Millions)
1	\$ 10	HOLIDAY DOUBLER	\$ 3.335
2	\$ 20	MERRY MILLIONS	\$ 2.975
3	\$ 20	\$500 MILLION EXTREME CASH BLAST	\$ 2.770
4	\$ 5	\$50,000 FAST CASH	\$ 2.409
5	\$ 3	LOTERIA	\$ 2.086
6	\$ 5	NUTCRACKER CASH	\$ 2.065
7	\$ 10	\$200 MILLION CASH SPECTACULAR	\$ 2.057
8	\$ 3	BONUS CASHWORD	\$ 1.993
9	\$ 5	RUBY 7'S	\$ 1.900
10	\$ 5	10X THE MONEY	\$ 1.757

Texas Lottery Commission
Prize Payout Tracking Report
Unaudited

Through Week Ending 11/10/12

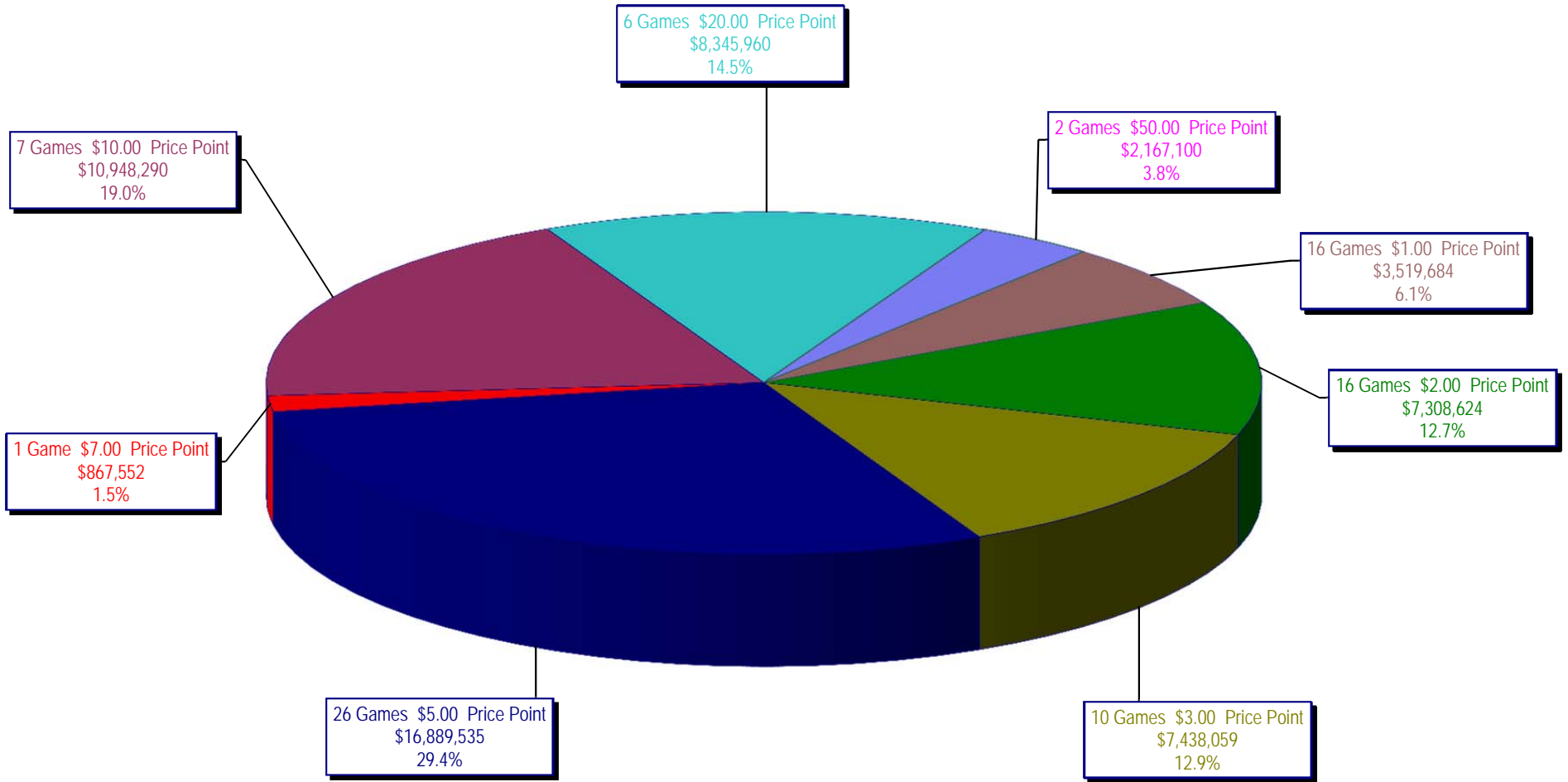
Draw Game Sales

		FY Sales Through Week Ending 11/10/2012		FY Prize Expense Through Week Ending 11/10/2012	Actual* Prize Payout	Base Payout (Prize Pool)
Lotto	\$	32,229,635	\$	22,987,632	71.32%	50.00%
Pick 3		51,351,631		30,841,430	60.06%	50.00%
Pick 3 Sum It Up		974,958		475,097	48.73%	50.00%
Cash Five		11,170,250		5,586,611	50.01%	50.00%
Texas Two Step		10,401,674		5,286,554	50.82%	50.00%
Mega Millions		21,439,467		10,446,180	48.72%	50.00%**
Megaplier		4,942,310		2,371,811	47.99%	N/A
Daily 4		13,532,906		5,959,225	44.04%	50.00%
Daily 4 Sum It Up		920,136		372,996	40.54%	50.00%
Powerball		32,744,427		16,757,265	51.18%	50.00%**
Power Play		4,098,714		2,014,864	49.16%	N/A
All or Nothing		19,650,491		12,017,688	61.16%	50.00%
Totals	\$	203,456,598	\$	115,117,352	56.58%	

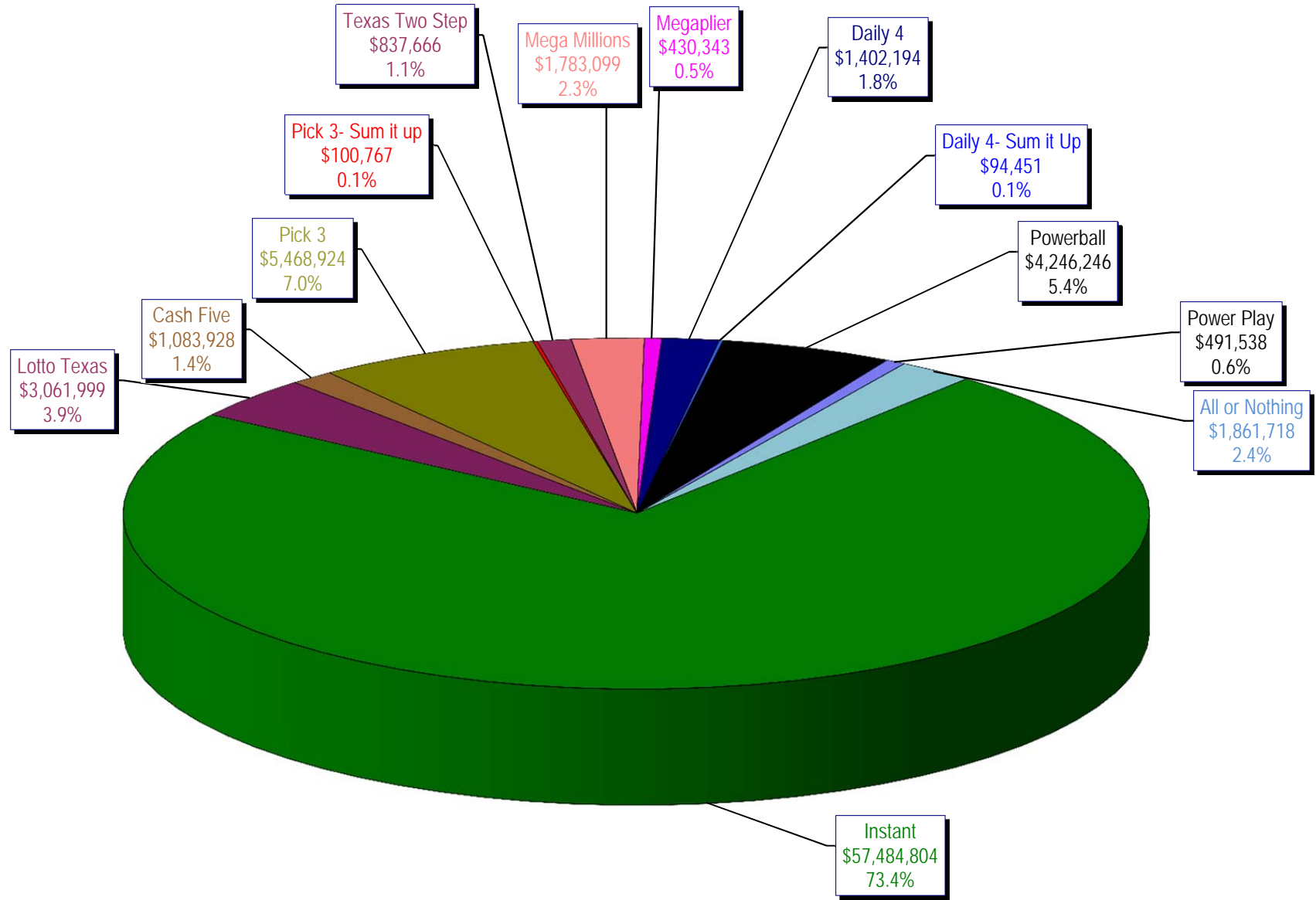
* Before Unclaimed Prizes

** Estimated; depends on # of guaranteed prizes won in Texas

Texas Lottery Commission
Instant Ticket Sales
For the Week Ending 11/10/12
(Unaudited)



Texas Lottery Commission
All Game Sales
For the Week Ending 11/10/12
(Unaudited)



Texas Lottery Commission - Weekly Sales Summary for FY 2013 (Unaudited)

Week Ended	Instant Games	New Games & Dates	Lotto Texas	Jackpot W S	Pick 3	Pick 3 Sum It Up	Cash Five	Texas Two Step	Jackpot M TH	Mega Millions	Jackpot T F	Megaplier	Daily 4	Daily 4 Sum It Up	Powerball	Jackpot W S	Power Play	All or Nothing	Total	Per Cap.
9/1/2012	56,975,312	1446 (\$1, N); 1444 (\$2, N) - 08/27/12	2,972,415	12 13	4,967,337	105,441	1,198,597	1,455,689	500 675	2,769,421	73 83	612,072	1,419,103	97,265	2,680,694	70 80	364,030		75,617,375	2.95
9/8/2012	56,941,761	1440 (\$2, N); 1458 (\$3, N); 1459 (\$5, N) - 09/03/12	3,005,564	14 15	5,112,132	106,959	1,185,494	1,179,003	875 200	3,140,536	93 105	665,392	1,412,279	99,861	3,002,910	90 100	395,287		76,247,178	2.97
9/15/2012	56,302,875	1452 (\$3, N) - 09/10/12	2,999,894	16 17	4,785,209	95,720	1,118,519	894,412	225 200	2,684,227	120 12	580,869	1,290,478	90,795	3,373,296	110 125	417,470	2,526,342	77,160,105	3.01
9/22/2012	54,974,438	1460 (\$1, N); 1461 (\$5, N) - 09/17/12	2,986,898	18 19	4,611,684	89,173	1,091,440	986,264	225 325	1,874,336	15 12	452,082	1,258,191	86,390	4,122,790	149 174	479,344	2,531,686	75,544,715	2.94
9/29/2012	54,606,674	1462 (\$2, N); 1472 (\$10, N) - 09/24/12	3,047,519	20 21	4,708,250	90,752	1,077,739	1,313,257	475 625	1,884,366	14 21	452,334	1,278,847	87,211	3,779,359	200 40	445,091	2,297,966	75,069,364	2.92
10/6/2012	59,223,327	1464 (\$5, N) - 10/01/12	3,164,231	22 23	4,947,571	96,251	1,121,146	1,188,386	800 200	2,055,918	28 36	482,303	1,310,612	89,270	2,266,428	50 40	312,877	2,244,980	78,503,300	3.06
10/13/2012	57,075,606	1465 (\$1, N); 1466 (\$20, N) - 10/08/2012	3,133,742	24 25	4,793,793	89,663	1,074,687	865,146	225 200	2,163,099	45 53	492,614	1,261,858	84,585	2,241,120	50 60	309,684	2,128,476	75,714,073	2.95
10/20/2012	56,630,134	1467 (\$1, N); 1468 (\$5, N) - 10/15/12	3,172,820	26 27	4,959,071	88,413	1,074,980	970,100	225 325	1,984,966	61 12	466,730	1,296,602	84,868	2,447,518	70 80	328,436	2,124,439	75,629,077	2.95
10/27/2012	55,789,743	1469 (\$2, N); 1470 (\$10, N) - 10/22/2012	3,204,694	28 29	5,550,567	96,242	1,063,201	1,226,578	450 600	1,778,725	13 21	430,528	1,381,019	91,618	2,914,062	90 100	371,273	2,021,684	75,919,933	2.96
11/3/2012	58,142,777	1503 (\$5, N) - 10/29/2012	3,392,650	30 31	5,501,964	101,742	1,078,593	860,073	200 225	1,950,117	27 32	462,385	1,393,099	93,773	3,466,242	110 124	424,170	1,913,200	78,780,785	3.07
11/10/2012	57,484,804	1475 (\$1, N); 1476 (\$3, N) - 11/05/2012	3,061,999	32 4	5,468,924	100,767	1,083,928	837,666	200 200	1,783,099	12 13	430,343	1,402,194	94,451	4,246,246	143 168	491,538	1,861,718	78,347,676	3.05
weekly change	-1.1%		-9.7%		-0.6%	-1.0%	0.5%	-2.6%		-8.6%		-6.9%	0.7%		22.5%		15.9%	-2.7%		-0.5%
	SALES		SALES		SALES	SALES	SALES	SALES		SALES		SALES	SALES	SALES	SALES		SALES		SALES	% of Sales
Calendar Year to date	2,710,186,279		142,975,472		236,834,239	4,863,892	55,238,369	54,881,496		179,563,909		34,451,658	61,173,590	4,274,963	163,207,519		21,096,813	19,650,491	3,688,398,688	100.0%
Fiscal Year to date 2013	576,783,467		32,229,635		51,351,631	974,958	11,170,250	10,401,674		21,439,467		4,942,310	13,532,906	920,136	32,744,427		4,098,714	19,650,491	780,240,065	100.0%