



## *WEEKLY SALES SUMMARY*

Unaudited

**Week Ending: 11/12/2011**

**Texas Lottery Commission**  
**Fiscal Year to Date Sales Comparison**  
**Unaudited**

Through the week ending 11/12/2011 (11 weeks)

Sales by Game	FY 2010 *	FY 2011 **	FY 2012	\$ Change		% Change	
				FY 2012 to FY 2010	FY 2012 to FY 2011 to	FY 2012 to FY 2010	FY 2012 to FY 2011
Instants	\$ 554,479,541	\$ 533,748,482	\$ 549,040,370	\$ -5,439,171	\$ 15,291,888	-1.0%	2.9%
Lotto Texas	64,273,906	34,811,881	34,862,050	-29,411,856	50,169	-45.8%	0.1%
Pick 3	54,993,990	55,063,655	52,303,558	-2,690,432	-2,760,097	-4.9%	-5.0%
Pick 3 Sum It Up	1,100,307	1,120,951	1,060,186	-40,121	-60,766	-3.6%	-5.4%
Cash Five	13,978,464	12,967,386	12,807,468	-1,170,996	-159,918	-8.4%	-1.2%
Texas Two Step	8,976,574	9,098,565	12,980,200	4,003,626	3,881,635	44.6%	42.7%
Mega Millions	40,390,204	26,820,956	27,891,961	-12,498,243	1,071,005	-30.9%	4.0%
Megaplier	9,064,633	6,015,919	6,351,063	-2,713,570	335,144	-29.9%	5.6%
Daily 4	10,468,759	11,351,982	12,161,980	1,693,221	809,998	16.2%	7.1%
Daily 4 Sum It Up	1,031,547	890,752	916,853	-114,694	26,102	-11.1%	2.9%
Powerball	-	17,812,951	27,998,093	27,998,093	10,185,142	-	-
Power Play	-	4,242,590	5,929,461	5,929,461	1,686,871	-	-
<b>Total</b>	<b>\$ 758,757,924</b>	<b>\$ 713,946,069</b>	<b>\$ 744,303,242</b>	<b>\$ -14,454,682</b>	<b>\$ 30,357,173</b>	<b>-1.9%</b>	<b>4.3%</b>

\* 2 extra days

\*\* 1 extra day

**Texas Lottery Commission**  
**Fiscal Year to Date Cumulative Average Sales Comparison**  
**Unaudited**

Through the week ending 11/12/2011 (11 weeks)

<b>Sales by Game</b>	<b>FY 2010</b>	<b>FY 2011</b>	<b>FY 2012</b>
Instant	\$ 7,393,061	\$ 7,212,817	\$ 7,521,101
Lotto Texas	856,985	470,431	477,562
Pick 3	733,253	744,103	716,487
Pick 3 Sum It Up	14,671	15,148	14,523
Cash Five	186,380	175,235	175,445
Texas Two Step	119,688	122,954	177,811
Mega Millions	538,536	362,445	382,082
Megaplier	120,862	81,296	87,001
Daily 4	139,583	153,405	166,602
Daily 4 Sum It Up	13,754	12,037	12,560
Powerball	-	240,716	383,536
Power Play	-	57,332	81,225
<b>Total</b>	<b>\$ 10,116,772</b>	<b>\$ 9,647,920</b>	<b>\$ 10,195,935</b>

thru 11/14/2009  
75 days

thru 11/13/2010  
74 days

thru 11/12/2011  
73 days

**Texas Lottery Commission**  
**Fiscal Year Over Year Change in Sales**  
**Unaudited**  
**FY 2012 Compared to FY 2011**

Week	FY 2012 Week Ending	INSTANT TICKETS				ON-LINE GAMES				TOTAL SALES			
		FY 2012	FY 2011	Difference	% change - Cumulative Sales	FY 2012	FY 2011	Difference	% change - Cumulative Sales	FY 2012	FY 2011	Difference	% change - Cumulative Sales
1	9/3/2011**	\$25,147,181	\$31,659,033	(\$6,511,852)	-20.6%	\$9,704,561	\$11,430,717	(\$1,726,156)	-15.1%	\$34,851,742	\$43,089,750	(\$8,238,008)	-19.1%
2	9/10/2011	\$50,591,068	\$48,912,598	\$1,678,470	3.4%	\$17,681,853	\$16,398,160	\$1,283,693	7.8%	\$68,272,921	\$65,310,758	\$2,962,163	4.5%
3	9/17/2011	\$49,835,063	\$48,988,241	\$846,822	1.7%	\$16,842,326	\$17,166,827	(\$324,501)	-1.9%	\$66,677,389	\$66,155,068	\$522,321	0.8%
4	9/24/2011	\$49,777,138	\$48,471,310	\$1,305,828	2.7%	\$17,504,800	\$15,623,813	\$1,880,987	12.0%	\$67,281,938	\$64,095,123	\$3,186,815	5.0%
5	10/1/2011	\$51,040,274	\$50,145,138	\$895,136	1.8%	\$18,653,100	\$16,453,939	\$2,199,161	13.4%	\$69,693,374	\$66,599,077	\$3,094,297	4.6%
6	10/8/2011	\$53,715,157	\$50,918,591	\$2,796,566	5.5%	\$17,225,680	\$16,974,963	\$250,717	1.5%	\$70,940,837	\$67,893,554	\$3,047,283	4.5%
7	10/15/2011	\$51,942,121	\$49,096,011	\$2,846,110	5.8%	\$17,854,980	\$16,661,904	\$1,193,077	7.2%	\$69,797,101	\$65,757,915	\$4,039,187	6.1%
8	10/22/2011	\$52,837,769	\$50,158,946	\$2,678,823	5.3%	\$19,558,519	\$17,374,460	\$2,184,060	12.6%	\$72,396,288	\$67,533,406	\$4,862,883	7.2%
9	10/29/2011	\$52,206,644	\$49,775,287	\$2,431,357	4.9%	\$21,504,565	\$18,402,209	\$3,102,356	16.9%	\$73,711,209	\$68,177,496	\$5,533,713	8.1%
10	11/5/2011	\$56,265,310	\$53,337,848	\$2,927,462	5.5%	\$20,870,086	\$17,321,908	\$3,548,179	20.5%	\$77,135,396	\$70,659,756	\$6,475,641	9.2%
11	11/12/2011	\$55,682,645	\$52,285,479	\$3,397,166	6.5%	\$17,862,404	\$16,388,690	\$1,473,714	9.0%	\$73,545,049	\$68,674,169	\$4,870,880	7.1%
12	11/19/2011		\$52,424,036				\$16,138,022				\$68,562,058		
13	11/26/2011		\$51,262,518				\$15,967,075				\$67,229,593		
14	12/3/2011		\$56,385,259				\$17,553,175				\$73,938,434		
15	12/10/2011		\$56,540,048				\$17,703,352				\$74,243,400		
16	12/17/2011		\$57,699,991				\$18,465,282				\$76,165,273		
17	12/24/2011		\$59,800,480				\$19,635,771				\$79,436,251		
18	12/31/2011		\$61,423,121				\$26,122,257				\$87,545,378		
19	1/7/2012		\$60,976,653				\$33,521,570				\$94,498,223		
20	1/14/2012		\$50,099,433				\$17,114,637				\$67,214,070		
21	1/21/2012		\$53,143,646				\$18,091,208				\$71,234,854		
22	1/28/2012		\$54,096,128				\$17,446,156				\$71,542,284		
23	2/4/2012		\$53,433,592				\$17,388,581				\$70,822,173		
24	2/11/2012		\$60,277,094				\$18,233,038				\$78,510,132		
25	2/18/2012		\$61,536,763				\$19,387,518				\$80,924,281		
26	2/25/2012		\$59,046,203				\$20,054,404				\$79,100,607		
27	3/3/2012		\$60,537,060				\$19,478,807				\$80,015,867		
28	3/10/2012		\$59,997,361				\$19,601,658				\$79,599,019		
29	3/17/2012		\$57,835,554				\$21,189,563				\$79,025,117		
30	3/24/2012		\$57,911,940				\$29,729,651				\$87,641,591		
31	3/31/2012		\$60,407,139				\$19,519,264				\$79,926,403		
32	4/7/2012		\$60,704,285				\$19,455,317				\$80,159,602		
33	4/14/2012		\$57,663,398				\$17,866,867				\$75,530,265		
34	4/21/2012		\$56,740,216				\$17,429,326				\$74,169,542		
35	4/28/2012		\$58,042,011				\$17,104,548				\$75,146,559		
36	5/5/2012		\$66,509,159				\$17,744,833				\$84,253,992		
37	5/12/2012		\$53,769,716				\$17,783,942				\$71,553,658		
38	5/19/2012		\$53,704,228				\$18,623,882				\$72,328,110		
39	5/26/2012		\$52,310,134				\$19,115,921				\$71,426,055		
40	6/2/2012		\$53,256,725				\$18,462,603				\$71,719,328		
41	6/9/2012		\$54,293,614				\$17,213,019				\$71,506,633		
42	6/16/2012		\$52,688,230				\$17,534,413				\$70,222,643		

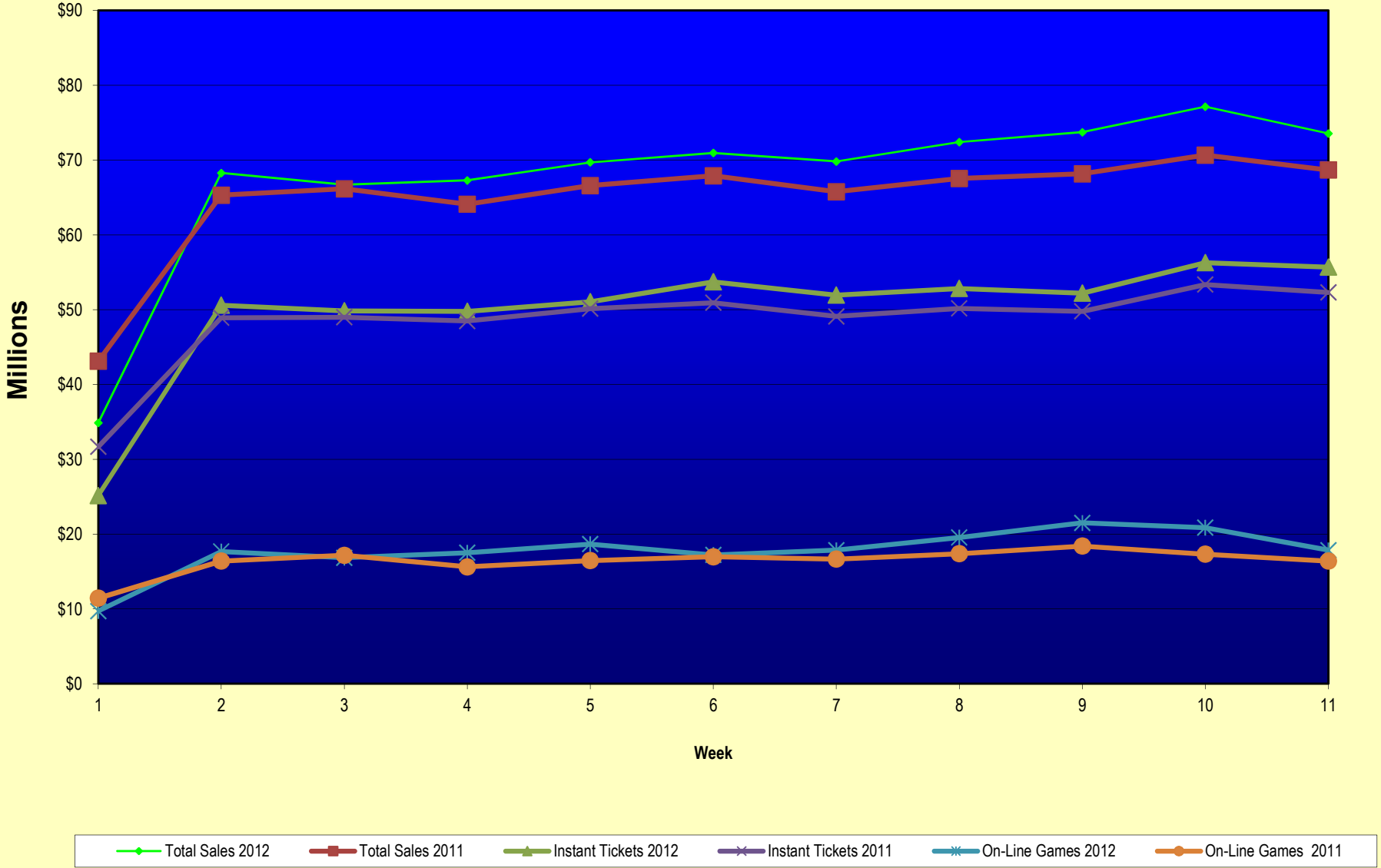
Note: Week 1 is not a full week of sales as this report is prepared on a Fiscal Year basis.

**Texas Lottery Commission**  
**Fiscal Year Over Year Change in Sales**  
**Unaudited**  
**FY 2012 Compared to FY 2011**

Week	FY 2012 Week Ending	INSTANT TICKETS				ON-LINE GAMES				TOTAL SALES			
		FY 2012	FY 2011	Difference	% change - Cumulative Sales	FY 2012	FY 2011	Difference	% change - Cumulative Sales	FY 2012	FY 2011	Difference	% change - Cumulative Sales
43	6/23/2012		\$53,174,595				\$17,086,937				\$70,261,532		
44	6/30/2012		\$53,687,509				\$18,406,785				\$72,094,294		
45	7/7/2012		\$53,054,685				\$16,211,989				\$69,266,674		
46	7/14/2012		\$51,161,290				\$16,945,733				\$68,107,023		
47	7/21/2012		\$50,807,750				\$17,362,213				\$68,169,963		
48	7/28/2012		\$51,277,179				\$18,870,764				\$70,147,943		
49	8/4/2012		\$53,320,489				\$20,922,034				\$74,242,523		
50	8/11/2012		\$50,914,022				\$19,467,124				\$70,381,146		
51	8/18/2012		\$49,905,898				\$17,419,045				\$67,324,943		
52	8/25/2012		\$49,424,242				\$16,837,474				\$66,261,716		
	8/31/2012		\$27,274,804				\$8,600,118				\$35,874,922		
<b>Total thru Current Week</b>		\$549,040,370	\$533,748,482	\$15,291,888	2.9%	\$195,262,872	\$180,197,587	\$15,065,285	8.4%	\$744,303,242	\$713,946,069	\$30,357,173	4.3%
<b>Fiscal Year Total</b>		\$549,040,370	\$2,842,266,680			\$195,262,872	\$969,003,455			\$744,303,242	\$3,811,270,135		

\*\* FY 2011 includes 4 days; FY 2012 includes 3 days

### Texas Lottery Commission Fiscal Year Over Year Change in Sales



Note: Week 1 is not a full week of sales as this report is prepared on a Fiscal Year basis.

Texas Lottery Commission  
**Instant Tickets by Price Point**  
**Sales, Prize Expense, Sales Contribution and Payout Percentage With Year Over Year Changes**  
 Unaudited

Fiscal Year	Price Point	# of Active Games	FY Sales	% of Instant Ticket Sales	Year over Year Change in Sales	FY Prize Expense	Year over Year Change in Prize Expense	FY Sales Contribution	Year over Year Change in Contribution	Average Prize Payout %	Year over Year Change in Payout %
2011	\$1.00	23	37,178,727	7.0%		22,819,677		14,359,050		61.4%	2.1%
thru	\$2.00	24	80,940,980	15.2%		53,177,839		27,763,141		65.7%	0.9%
11/13/2010	\$3.00	16	63,329,633	11.9%		41,619,372		21,710,261		65.7%	0.2%
	\$5.00	31	170,708,970	32.0%		116,289,809		54,419,161		68.1%	0.2%
	\$7.00	6	23,366,882	4.4%		15,884,740		7,482,142		68.0%	0.0%
	\$10.00	12	68,358,710	12.8%		48,279,158		20,079,552		70.6%	1.0%
	\$20.00	5	70,443,880	13.2%		52,147,060		18,296,820		74.0%	1.2%
	\$50.00	2	19,420,700	3.6%		15,076,873		4,343,827		77.6%	4.1%
<b>Total</b>		<b>119</b>	<b>\$533,748,482</b>			<b>\$365,294,528</b>		<b>\$168,453,954</b>		<b>68.4%</b>	<b>1.0%</b>
2012	\$1.00	24	39,014,751	7.1%		23,765,619		15,249,132		60.9%	0.3%
thru	\$2.00	24	76,426,264	13.9%		49,708,772		26,717,492		65.0%	-0.8%
11/12/2011	\$3.00	14	67,666,437	12.3%		44,404,648		23,261,789		65.6%	0.0%
	\$5.00	29	168,821,025	30.7%		114,789,553		54,031,472		68.0%	0.1%
	\$7.00	4	14,605,003	2.7%		9,931,262		4,673,741		68.0%	0.0%
	\$10.00	13	90,190,120	16.4%		63,583,483		26,606,637		70.5%	-0.7%
	\$20.00	5	76,860,620	14.0%		57,319,960		19,540,660		74.6%	-0.1%
	\$50.00	1	15,456,150	2.8%		12,005,062		3,451,088		77.7%	0.1%
<b>Total</b>		<b>114</b>	<b>\$549,040,370</b>			<b>\$375,508,361</b>		<b>\$173,532,009</b>		<b>68.4%</b>	<b>-0.1%</b>
<b>Variance</b>	<b>\$1.00</b>	<b>1</b>	<b>1,836,024</b>		<b>4.9%</b>	<b>945,942</b>	<b>4.1%</b>	<b>890,082</b>	<b>6.2%</b>	<b>-0.46%</b>	
<b>2012 to</b>	<b>\$2.00</b>	<b>0</b>	<b>-4,514,716</b>		<b>-5.6%</b>	<b>-3,469,067</b>	<b>-6.5%</b>	<b>-1,045,649</b>	<b>-3.8%</b>	<b>-0.66%</b>	
<b>2011</b>	<b>\$3.00</b>	<b>-2</b>	<b>4,336,804</b>		<b>6.8%</b>	<b>2,785,276</b>	<b>6.7%</b>	<b>1,551,528</b>	<b>7.1%</b>	<b>-0.10%</b>	
	<b>\$5.00</b>	<b>-2</b>	<b>-1,887,945</b>		<b>-1.1%</b>	<b>-1,500,255</b>	<b>-1.3%</b>	<b>-387,690</b>	<b>-0.7%</b>	<b>-0.13%</b>	
	<b>\$7.00</b>	<b>-2</b>	<b>-8,761,879</b>		<b>-37.5%</b>	<b>-5,953,477</b>	<b>-37.5%</b>	<b>-2,808,402</b>	<b>-37.5%</b>	<b>0.02%</b>	
	<b>\$10.00</b>	<b>1</b>	<b>21,831,410</b>		<b>31.9%</b>	<b>15,304,325</b>	<b>31.7%</b>	<b>6,527,085</b>	<b>32.5%</b>	<b>-0.13%</b>	
	<b>\$20.00</b>	<b>0</b>	<b>6,416,740</b>		<b>9.1%</b>	<b>5,172,900</b>	<b>9.9%</b>	<b>1,243,840</b>	<b>6.8%</b>	<b>0.55%</b>	
	<b>\$50.00</b>	<b>-1</b>	<b>-3,964,550</b>		<b>-20.4%</b>	<b>-3,071,811</b>	<b>-20.4%</b>	<b>-892,739</b>	<b>-20.6%</b>	<b>0.04%</b>	
<b>Total</b>		<b>-5</b>	<b>\$15,291,888</b>		<b>2.9%</b>	<b>\$10,213,833</b>	<b>2.8%</b>	<b>\$5,078,055</b>	<b>3.0%</b>	<b>-0.05%</b>	

Notes - Instant Ticket Variances

**Texas Lottery Commission**  
**Instant Tickets by Price Point**  
**Sales, Prize Expense, Sales Contribution and Payout Percentage With Year Over Year Changes**  
**Unaudited**

		FY 2012		FY 2011		Difference
Sales	\$1 - \$7		\$366,533,480		\$375,525,192	-\$8,991,712
Prize Exp.	\$1 - \$7		\$242,599,855		\$249,791,437	-\$7,191,582
Sales Cont.	\$1 - \$7		\$123,933,625		\$125,733,755	-\$1,800,130
Prize Exp. %	\$1 - \$7		66.2%		66.5%	-0.3%
		FY 2012		FY 2011		Difference
Sales	\$10 - \$50		\$182,506,890		\$158,223,290	\$24,283,600
Prize Exp.	\$10 - \$50		\$132,908,506		\$115,503,091	\$17,405,415
Sales Cont.	\$10 - \$50		\$49,598,384		\$42,720,199	\$6,878,185
Prize Exp. %	\$10 - \$50		72.8%		73.0%	-0.2%
		FY 2012		FY 2011		Difference
Sales	Instant		\$549,040,370		\$533,748,482	\$15,291,888
Prize Exp.	Instant		\$375,508,361		\$365,294,528	\$10,213,833
Sales Cont.	Instant		\$173,532,009		\$168,453,954	\$5,078,055
Prize Exp. %	Instant		68.4%		68.4%	0.0%

		FY 2012		FY 2011		Difference
Sales	\$1 - \$10		\$456,723,600		\$443,883,902	\$12,839,698
Prize Exp.	\$1 - \$10		\$306,183,339		\$298,070,595	\$8,112,743
Sales Cont.	\$1 - \$10		\$150,540,261		\$145,813,307	\$4,726,955
Prize Exp. %	\$1 - \$10		67.0%		67.2%	-0.1%
		FY 2012		FY 2011		Difference
Sales	\$20 - \$50		\$92,316,770		\$89,864,580	\$2,452,190
Prize Exp.	\$20 - \$50		\$69,325,022		\$67,223,933	\$2,101,089
Sales Cont.	\$20 - \$50		\$22,991,748		\$22,640,647	\$351,101
Prize Exp. %	\$20 - \$50		75.1%		74.8%	0.3%
		FY 2012		FY 2011		Difference
Sales	Instant		\$549,040,370		\$533,748,482	\$15,291,888
Prize Exp.	Instant		\$375,508,361		\$365,294,528	\$10,213,833
Sales Cont.	Instant		\$173,532,009		\$168,453,954	\$5,078,055
Prize Exp. %	Instant		68.4%		68.4%	0.0%



**Texas Lottery Commission  
Weekly Sales Summary  
& Comparison to Previous Week  
Unaudited**

	<b>Week Ending 11/12/2011</b>		<b>Week Ending 11/05/2011</b>			
	<b>THIS WEEK</b>	<b>% of Sales</b>	<b>LAST WEEK</b>	<b>% of Sales</b>	<b>\$ change</b>	<b>% change</b>
Total Sales	<u>\$73,545,049</u>		<u>\$77,135,396</u>		<u>-\$3,590,348</u>	-4.65%
Instant Tickets	<u>\$55,682,645</u>	75.7%	<u>\$56,265,310</u>	72.9%	<u>-\$582,665</u>	-1.04%
Lotto	\$3,673,137	5.0%	\$3,570,825	4.6%	\$102,312	2.87%
Pick 3	\$5,298,645	7.2%	\$5,165,835	6.7%	\$132,811	2.57%
Pick 3 Sum It Up	\$109,575	0.1%	\$105,793	0.1%	\$3,783	3.58%
Cash Five	\$1,268,630	1.7%	\$1,240,514	1.6%	\$28,116	2.27%
Texas Two Step	\$961,349	1.3%	\$910,036	1.2%	\$51,313	5.64%
Mega Millions	\$2,362,698	3.2%	\$2,497,308	3.2%	-\$134,610	-5.39%
Megaplier	\$552,133	0.8%	\$583,481	0.8%	-\$31,348	-5.37%
Daily 4	\$1,235,272	1.7%	\$1,222,706	1.6%	\$12,567	1.03%
Daily 4 Sum It Up	\$92,025	0.1%	\$92,619	0.1%	-\$594	-0.64%
Powerball	\$1,861,697	2.5%	\$4,617,172	6.0%	-\$2,755,475	-59.68%
Power Play	\$447,243	0.6%	\$863,799	1.1%	-\$416,556	-48.22%
Total Online Sales	<u>\$17,862,404</u>		<u>\$20,870,086</u>		<u>-\$3,007,683</u>	-14.41%

Totals may not sum due to rounding.

**Texas Lottery Commission  
Weekly Sales Summary  
Unaudited**

**INSTANT TICKETS  
TOP TEN SELLING GAMES**

For the Week Ending : 11/12/11

Rank	Price Point	Game	Sales (Millions)
1	\$ 5	EXTREME CASH	3.388
2	\$ 10	SEASON'S GREETINGS	3.064
3	\$ 20	MERRY MILLIONAIRE	3.056
4	\$ 10	20X THE MONEY	2.785
5	\$ 5	\$100,000 EXTREME CASH	2.740
6	\$ 20	\$500,000,000 FRENZY	2.579
7	\$ 5	BLACK ONYX 7S	1.998
8	\$ 3	SEASON'S GREETINGS	1.810
9	\$ 3	LOTERIA	1.725
10	\$ 20	\$500,000,000 BLOCKBUSTER	1.651

**Texas Lottery Commission  
Prize Payout Tracking Report  
Unaudited**

Through Week Ending 11/12/11

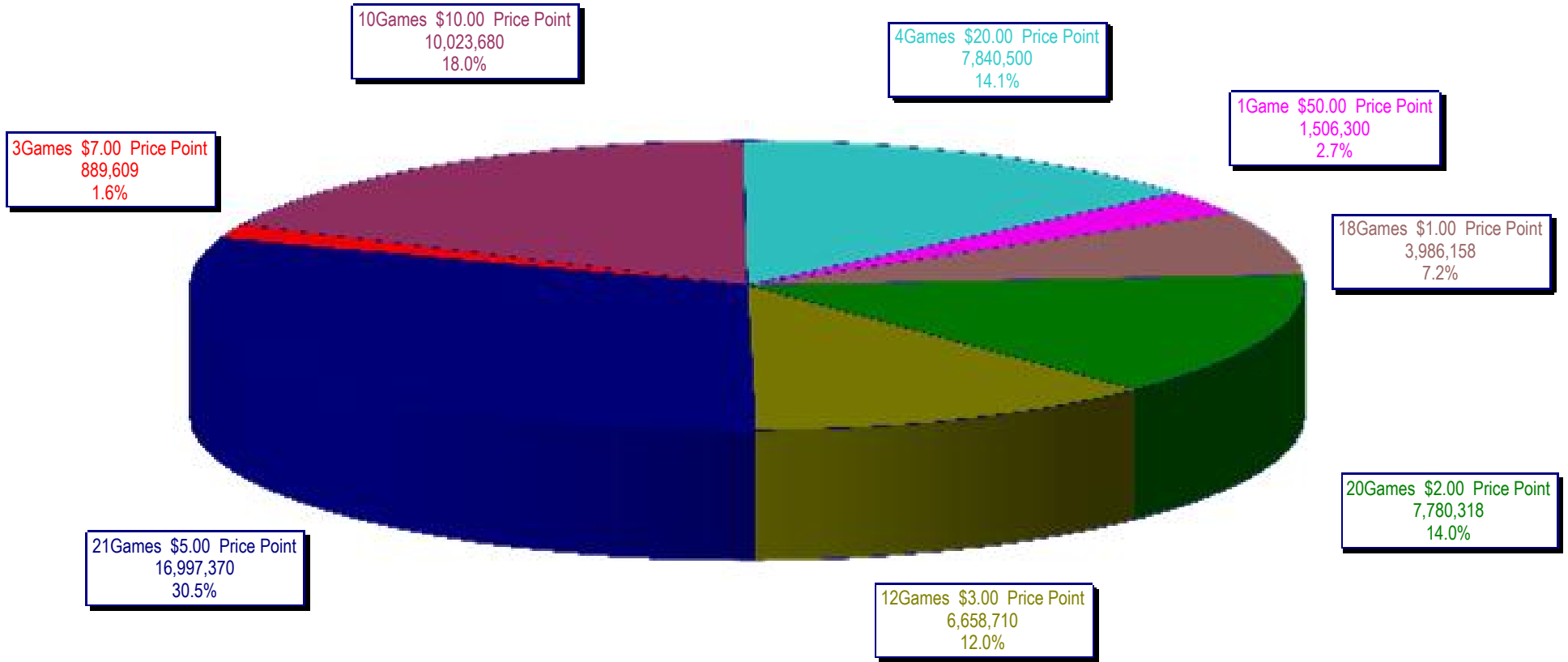
**On-Line Sales**

		FY Sales Through Week Ending 11/12/2011		FY Prize Expense Through Week Ending 11/12/2011	Actual* Prize Payout	Base Payout (Prize Pool)
Lotto	\$	34,862,050	\$	21,003,770	60.25%	50.00%
Pick 3		52,303,558		23,724,880	45.36%	50.00%
Pick 3 Sum It Up		1,060,186		482,176	45.48%	50.00%
Cash Five		12,807,468		6,403,737	50.00%	50.00%
Texas Two Step		12,980,200		6,519,569	50.23%	50.00%
Mega Millions		27,891,961		13,492,397	48.37%	50.00%**
Megaplier		6,351,063		3,944,121	62.10%	N/A
Daily 4		12,161,980		5,279,000	43.41%	50.00%
Daily 4 Sum It Up		916,853		356,398	38.87%	50.00%
Powerball		27,998,093		13,997,580	49.99%	50.00%**
Power Play		5,929,461		3,026,770	51.05%	N/A
<b>Totals</b>	\$	<b>195,262,872</b>	\$	<b>98,230,397</b>	<b>50.31%</b>	

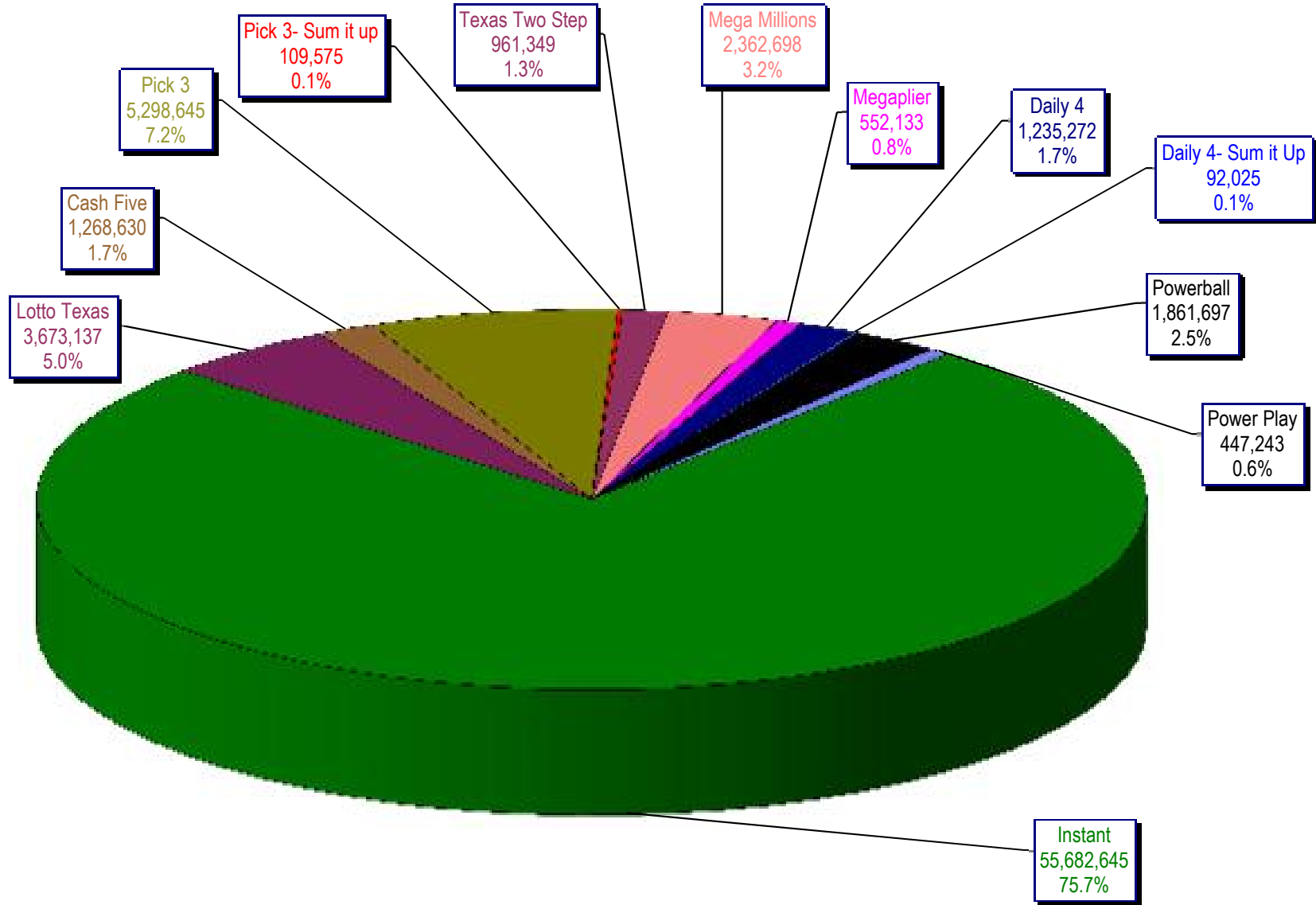
\* Before Unclaimed Prizes

\*\* Estimated; depends on # of guaranteed prizes won in Texas

Texas Lottery Commission  
Instant Ticket Sales  
For the Week Ending 11/12/11  
(Unaudited)



**Texas Lottery Commission  
All Game Sales  
For the Week Ending 11/12/11  
(Unaudited)**



Texas Lottery Commission - Weekly Sales Summary for FY 2011 (Unaudited)

Week Ended	Instant Games	New Games & Dates	Lotto Texas	Jackpot W S	Pick 3	Pick 3 Sum It Up	Cash Five	Texas Two Step	Jackpot M TH	Mega Millions	Jackpot T F	Megaplier	Daily 4	Daily 4 Sum It Up	Powerball	Jackpot W S	Power Play	Total	Per Cap.
9/3/2011	52,421,985	1340 (\$1,N); 1310 (\$2, N) - 08/29/11	3,710,974	23 24	5,228,940	100,997	1,239,134	989,988	225 300	2,248,664	21 29	539,246	1,221,178	93,318	2,401,555	75 91	530,686	70,726,664	2.81
9/10/2011	50,591,068	1360 (\$3, N) - 09/05/11	3,329,350	25 4	5,103,026	99,259	1,198,563	935,771	450 200	2,387,766	37 44	557,225	1,180,505	88,443	2,295,315	107 20	506,631	68,272,921	2.71
9/17/2011	49,835,063	0	3,031,798	5 6	4,953,079	100,990	1,210,562	961,592	225 300	2,801,526	54 65	626,459	1,125,230	83,532	1,560,522	25 20	387,037	66,677,389	2.64
9/24/2011	49,777,138	1362(\$1, N); 1363(5,N); 1364(\$5,N) - 09/19/11	3,083,973	7 8	4,819,453	97,999	1,200,444	1,283,472	450 600	3,206,022	75 86	692,909	1,092,294	82,198	1,561,655	25 30	384,383	67,281,938	2.67
10/1/2011	51,040,274	1365(\$2,N) - 09/26/11	3,196,730	9 10	4,846,896	97,026	1,215,715	1,146,613	800 200	4,033,330	96 113	830,660	1,096,271	83,993	1,693,809	37 47	412,058	69,693,374	2.76
10/8/2011	53,715,157	1366(\$1,N) - 10/03/11	3,231,892	11 12	5,064,771	102,919	1,252,733	1,004,251	225 300	2,176,684	12 14	527,777	1,188,636	92,825	2,103,034	58 71	480,159	70,940,837	2.81
10/15/2011	51,942,121	1367 (\$7, N) - 10/10/11	3,230,925	13 14	4,776,985	99,008	1,214,385	1,337,436	450 625	2,260,036	22 30	542,787	1,132,415	84,772	2,613,215	86 105	563,017	69,797,101	2.77
10/22/2011	52,837,769	1369 (\$1, N); 1370 (\$5, N) - 10/17/11	3,250,317	15 16	4,784,201	98,306	1,202,768	1,887,302	825 1,050	2,386,255	39 48	561,705	1,130,353	83,722	3,477,867	124 148	695,724	72,396,288	2.87
10/29/2011	52,206,644	1371 (\$2, N) - 10/24/11	3,302,201	17 18	4,685,786	95,887	1,186,987	2,055,399	1,300 1,550	2,592,752	57 67	596,631	1,107,441	82,921	4,895,300	173 203	903,261	73,711,209	2.92
11/5/2011	56,265,310	1373 (\$10, N) - 10/31/11	3,570,825	19 20	5,165,835	105,793	1,240,514	910,036	200 200	2,497,308	78 12	583,481	1,222,706	92,619	4,617,172	245 20	863,799	77,135,396	3.06
11/12/2011	55,682,645	(\$3, N); 1374 (\$1, N) - 11/07/11	3,673,137	21 22	5,298,645	109,575	1,268,630	961,349	225 200	2,362,698	15 22	552,133	1,235,272	92,025	1,861,697	25 35	447,243	73,545,049	2.92
weekly change	-1.0%		2.9%		2.6%	3.6%	2.3%	5.6%		-5.4%		-5.4%	1.0%	-0.6%	-59.7%		-48.2%		-4.7%
	<b>SALES</b>		<b>SALES</b>		<b>SALES</b>	<b>SALES</b>	<b>SALES</b>	<b>SALES</b>		<b>SALES</b>		<b>SALES</b>	<b>SALES</b>	<b>SALES</b>	<b>SALES</b>		<b>SALES</b>	<b>SALES</b>	<b>% of Sales</b>
Startup to date	42,424,398,572		10,942,868,109		4,179,663,879	24,363,518	2,333,716,129	590,814,667		1,513,323,686		346,486,234	213,164,668	23,886,293	184,389,977		42,192,806	63,027,402,509	100.0%
Calendar Year to date	2,469,501,905		151,421,583		236,032,194	123,957	56,140,807	47,581,951		148,100,798		31,832,464	52,017,327	3,870,487	101,448,485		22,376,536	3,320,448,493	100.0%
Fiscal Year to date 2012	549,040,370		34,862,050		52,303,558	1,060,186	12,807,468	12,980,200		27,891,961		6,351,063	12,161,980	916,853	27,998,093		5,929,461	744,303,242	100.0%