



WEEKLY SALES SUMMARY

Unaudited

Week Ending: 11/15/08

Texas Lottery Commission
Fiscal Year to Date Sales Comparison
Unaudited

Through the week ending 11/15/2008 (11 weeks)

Sales by Game	FY 2007 *	FY 2008 **	FY 2009	\$ Change		% Change	
				FY 2009 to FY 2007	FY 2009 to FY 2008	FY 2009 to FY 2007	FY 2009 to FY 2008
Instants	\$ 582,223,680	\$ 578,856,014	\$ 539,644,653	\$ -42,579,027	\$ -39,211,361	-7.3%	-6.8%
Lotto Texas	43,591,928	46,082,162	37,122,996	-6,468,932	-8,959,166	-14.8%	-19.4%
Pick 3	65,043,704	60,645,181	56,186,568	-8,857,136	-4,458,613	-13.6%	-7.4%
Pick 3 Sum It Up	-	201,606	1,207,670	1,207,670	1,006,065	-	-
Cash 5	18,810,828	16,786,558	14,600,737	-4,210,091	-2,185,821	-22.4%	-13.0%
Texas Two Step	12,933,613	9,282,052	9,947,320	-2,986,293	665,268	-23.1%	7.2%
Mega Millions	31,812,995	27,943,661	27,087,359	-4,725,637	-856,303	-14.9%	-3.1%
Megaplier	7,721,460	7,286,440	7,078,540	-642,920	-207,900	-8.3%	-2.9%
Daily 4	-	8,200,427	8,410,584	8,410,584	210,157	-	-
Daily 4 Sum It Up	-	2,437,967	1,125,185	1,125,185	-1,312,783	-	-
Total	\$ 762,138,208	\$ 757,722,068	\$ 702,411,611	\$ -59,726,597	\$ -55,310,457	-7.8%	-7.3%

* 3 extra days in 2007 ** 2 extra days in 2008

Texas Lottery Commission
Fiscal Year Over Year Change in Sales
Unaudited
FY 2009 Compared to FY 2008

Week	FY 2009 Week Ending	INSTANT TICKETS				ON-LINE GAMES				TOTAL SALES			
		FY 2009	FY 2008	Difference	% change - Cumulative Sales	FY 2009	FY 2008	Difference	% change - Cumulative Sales	FY 2009	FY 2008	Difference	% change - Cumulative Sales
1	9/6/2008**	\$44,890,104	\$62,376,229	(\$17,486,125)	-28.0%	\$14,722,011	\$19,372,224	(\$4,650,213)	-24.0%	\$59,612,115	\$81,748,453	(\$22,136,338)	-27.1%
2	9/13/2008	\$46,309,551	\$52,458,866	(\$6,149,315)	-20.6%	\$13,704,860	\$16,926,163	(\$3,221,303)	-21.7%	\$60,014,411	\$69,385,029	(\$9,370,618)	-20.8%
3	9/20/2008	\$42,923,171	\$49,998,934	(\$7,075,763)	-18.6%	\$12,291,263	\$15,792,283	(\$3,501,020)	-21.8%	\$55,214,434	\$65,791,217	(\$10,576,783)	-19.4%
4	9/27/2008	\$47,042,801	\$49,894,175	(\$2,851,374)	-15.6%	\$14,222,339	\$14,800,514	(\$578,175)	-17.9%	\$61,265,140	\$64,694,689	(\$3,429,549)	-16.2%
5	10/4/2008	\$50,747,162	\$53,486,863	(\$2,739,701)	-13.5%	\$15,784,472	\$16,618,430	(\$833,958)	-15.3%	\$66,531,634	\$70,105,293	(\$3,573,659)	-14.0%
6	10/11/2008	\$49,763,789	\$50,918,020	(\$1,154,231)	-11.7%	\$15,622,498	\$15,601,410	\$21,088	-12.9%	\$65,386,287	\$66,519,430	(\$1,133,143)	-12.0%
7	10/18/2008	\$49,299,053	\$50,532,253	(\$1,233,200)	-10.5%	\$15,167,940	\$15,682,666	(\$514,726)	-11.6%	\$64,466,993	\$66,214,919	(\$1,747,926)	-10.7%
8	10/25/2008	\$49,977,581	\$50,347,450	(\$369,869)	-9.3%	\$14,525,843	\$15,586,516	(\$1,060,673)	-11.0%	\$64,503,424	\$65,933,966	(\$1,430,542)	-9.7%
9	11/1/2008	\$50,346,542	\$53,953,733	(\$3,607,191)	-9.0%	\$14,838,845	\$16,775,983	(\$1,937,139)	-11.1%	\$65,185,387	\$70,729,716	(\$5,544,330)	-9.5%
10	11/8/2008	\$54,860,087	\$53,635,090	\$1,224,997	-7.9%	\$16,057,069	\$15,912,791	\$144,278	-9.9%	\$70,917,156	\$69,547,881	\$1,369,275	-8.3%
11	11/15/2008	\$53,484,812	\$51,254,401	\$2,230,411	-6.8%	\$15,829,819	\$15,797,076	\$32,744	-9.0%	\$69,314,631	\$67,051,477	\$2,263,155	-7.3%
12	11/22/2008		\$50,897,817				\$15,801,720				\$66,699,537		
13	11/29/2008		\$53,913,115				\$17,055,525				\$70,968,620		
14	12/6/2008		\$55,702,697				\$17,900,717				\$73,603,414		
15	12/13/2008		\$53,703,516				\$17,820,841				\$71,524,357		
16	12/20/2008		\$57,592,769				\$17,436,233				\$75,029,002		
17	12/27/2008		\$57,696,003				\$14,743,680				\$72,439,683		
18	1/3/2009		\$57,935,952				\$15,704,450				\$73,640,402		
19	1/10/2009		\$55,360,542				\$15,691,540				\$71,052,082		
20	1/17/2009		\$54,920,166				\$16,259,669				\$71,179,835		
21	1/24/2009		\$54,439,890				\$16,691,724				\$71,131,614		
22	1/31/2009		\$57,464,382				\$17,968,227				\$75,432,609		
23	2/7/2009		\$60,715,019				\$20,097,338				\$80,812,357		
24	2/14/2009		\$57,093,143				\$22,179,908				\$79,273,051		
25	2/21/2009		\$57,627,047				\$27,230,539				\$84,857,586		
26	2/28/2009		\$55,591,667				\$17,016,118				\$72,607,785		
27	3/7/2009		\$56,837,481				\$16,690,193				\$73,527,674		
28	3/14/2009		\$54,587,112				\$16,448,165				\$71,035,277		
29	3/21/2009		\$53,098,937				\$16,639,184				\$69,738,121		
30	3/28/2009		\$53,933,689				\$17,698,625				\$71,632,314		
31	4/4/2009		\$57,598,982				\$17,665,411				\$75,264,393		
32	4/11/2009		\$53,954,185				\$15,860,784				\$69,814,969		
33	4/18/2009		\$53,946,736				\$16,452,676				\$70,399,412		
34	4/25/2009		\$51,533,006				\$16,873,949				\$68,406,955		
35	5/2/2009		\$53,250,568				\$18,202,103				\$71,452,671		
36	5/9/2009		\$54,060,849				\$18,422,562				\$72,483,411		
37	5/16/2009		\$54,010,641				\$20,728,360				\$74,739,001		
38	5/23/2009		\$50,377,032				\$15,461,384				\$65,838,416		
39	5/30/2009		\$49,545,080				\$15,175,370				\$64,720,450		
40	6/6/2009		\$53,702,986				\$15,982,166				\$69,685,152		

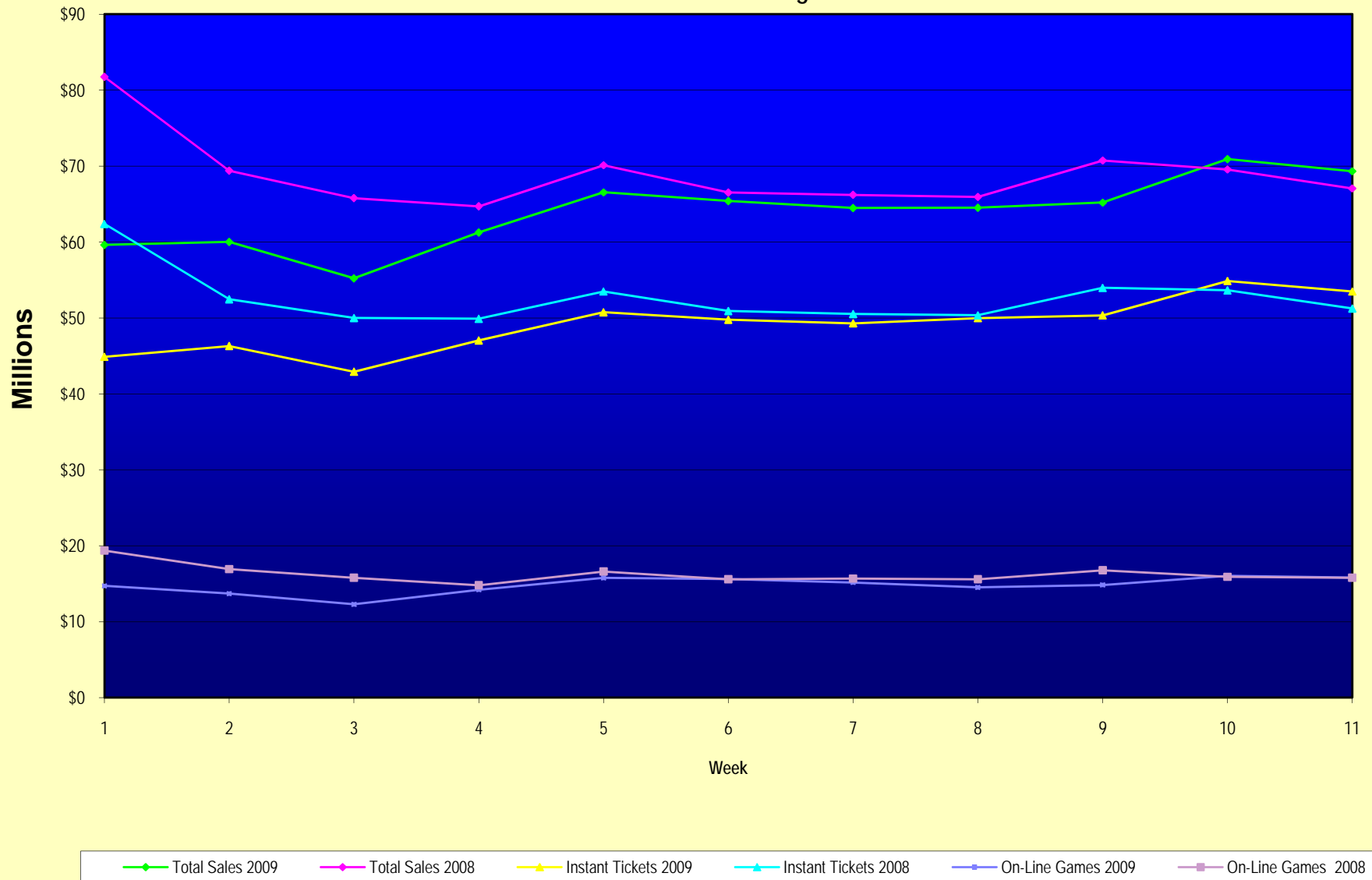
Note: Week 1 is not a full week of sales as this report is prepared on a Fiscal Year basis.

Texas Lottery Commission
Fiscal Year Over Year Change in Sales
Unaudited
FY 2009 Compared to FY 2008

Week	FY 2009 Week Ending	INSTANT TICKETS				ON-LINE GAMES				TOTAL SALES			
		FY 2009	FY 2008	Difference	% change - Cumulative Sales	FY 2009	FY 2008	Difference	% change - Cumulative Sales	FY 2009	FY 2008	Difference	% change - Cumulative Sales
41	6/13/2009		\$51,171,483				\$16,589,087				\$67,760,570		
42	6/20/2009		\$50,650,362				\$15,728,484				\$66,378,846		
43	6/27/2009		\$49,258,266				\$15,250,905				\$64,509,171		
44	7/4/2009		\$53,393,355				\$16,270,619				\$69,663,974		
45	7/11/2009		\$53,127,756				\$16,914,922				\$70,042,678		
46	7/18/2009		\$51,593,146				\$17,752,738				\$69,345,884		
47	7/25/2009		\$49,902,181				\$16,706,145				\$66,608,326		
48	8/1/2009		\$49,605,420				\$16,254,383				\$65,859,803		
49	8/8/2009		\$50,961,907				\$16,770,496				\$67,732,403		
50	8/15/2009		\$49,452,511				\$16,749,487				\$66,201,998		
51	8/22/2009		\$49,249,518				\$17,286,302				\$66,535,820		
52	8/29/2009		\$49,468,928				\$18,109,997				\$67,578,925		
53	9/5/2009		\$6,054,239				\$493,109				\$6,547,348		
Total thru Current Week		\$539,644,653	\$578,856,014	(\$39,211,361)	-6.8%	\$162,766,958	\$178,866,054	(\$16,099,096)	-9.0%	\$702,411,611	\$757,722,068	(\$55,310,457)	-7.3%
Fiscal Year Total		\$539,644,653	\$2,783,836,095			\$162,766,958	\$887,641,858			\$702,411,611	\$3,671,477,953		

** FY 2009 includes 6 days; FY 2008 includes 8 days
FY 2009 average daily sales are \$9,242,258. Two days at average daily sales are \$18,484,516.

Texas Lottery Commission Fiscal Year Over Year Change in Sales



Note: Week 1 is not a full week of sales as this report is prepared on a Fiscal Year basis.

Texas Lottery Commission
Instant Tickets by Price Point
Sales, Prize Expense, Sales Contribution and Payout Percentage With Year Over Year Changes
Unaudited

Fiscal Year	Price Point	# of Active Games	FY Sales	% of Instant Ticket Sales	Year over Year Change in Sales	FY Prize Expense	Year over Year Change in Prize Expense	FY Sales Contribution	Year over Year Change in Contribution	Average Prize Payout %	Year over Year Change in Payout %
2008	\$1.00	36	\$52,070,111	9.0%		\$31,302,535		\$20,767,576		60.1%	
thru	\$2.00	41	\$98,807,550	17.1%		\$64,239,844		\$34,567,706		65.0%	
11/17/2007	\$3.00	11	\$46,148,892	8.0%		\$30,417,617		\$15,731,275		65.9%	
	\$5.00	30	\$152,965,735	26.4%		\$103,646,713		\$49,319,022		67.8%	
	\$7.00	10	\$40,964,665	7.1%		\$27,845,057		\$13,119,608		68.0%	
	\$10.00	14	\$87,996,866	15.2%		\$61,600,180		\$26,396,686		70.0%	
	\$20.00	6	\$32,817,200	5.7%		\$23,604,264		\$9,212,936		71.9%	
	\$25.00	2	\$28,681,125	5.0%		\$20,819,566		\$7,861,559		72.6%	
	\$30.00	2	\$7,952,370	1.4%		\$5,748,049		\$2,204,321		72.3%	
	\$50.00	1	\$30,451,500	5.3%		\$21,962,590		\$8,488,910		72.1%	
Total		153	\$578,856,014			\$391,186,415		\$187,669,600		67.6%	
2009	\$1.00	29	45,294,669	8.4%		27,306,933		\$16,331,984		60.3%	0.3%
thru	\$2.00	25	95,576,256	17.7%		61,993,283		\$33,582,973		64.9%	-0.2%
11/15/2008	\$3.00	13	60,832,527	11.3%		39,974,879		\$20,857,648		65.7%	-0.3%
	\$5.00	28	161,144,619	29.9%		109,603,083		\$51,541,536		68.0%	0.4%
	\$7.00	6	20,219,017	3.7%		13,755,931		\$6,463,086		68.0%	0.1%
	\$10.00	12	70,917,750	13.1%		49,636,558		\$21,281,192		70.0%	0.0%
	\$20.00	7	54,194,300	10.0%		38,896,612		\$15,297,688		71.8%	-0.2%
	\$25.00	1	2,356,375	0.4%		1,713,928		\$642,447		72.7%	0.2%
	\$30.00	3	5,126,640	1.0%		3,716,494		\$1,410,146		72.5%	0.3%
	\$50.00	3	23,982,500	4.4%		17,346,360		\$6,636,140		72.3%	0.3%
Total		127	\$539,644,653			\$363,944,062		\$174,044,839		67.4%	-0.2%
Variance	\$1.00	-7	-\$6,775,442		-13.0%	-\$3,995,602	-12.8%	-\$4,435,593	-21.4%	0.17%	
2009 to	\$2.00	-16	-\$3,231,294		-3.3%	-\$2,246,562	-3.5%	-\$984,732	-2.8%	-0.15%	
2008	\$3.00	2	\$14,683,635		31.8%	\$9,557,262	31.4%	\$5,126,373	32.6%	-0.20%	
	\$5.00	-2	\$8,178,884		5.3%	\$5,956,369	5.7%	\$2,222,515	4.5%	0.26%	
	\$7.00	-4	-\$20,745,648		-50.6%	-\$14,089,125	-50.6%	-\$6,656,523	-50.7%	0.06%	
	\$10.00	-2	-\$17,079,116		-19.4%	-\$11,963,623	-19.4%	-\$5,115,493	-19.4%	-0.01%	
	\$20.00	1	\$21,377,100		65.1%	\$15,292,349	64.8%	\$6,084,751	66.0%	-0.15%	
	\$25.00	-1	-\$26,324,750		-91.8%	-\$19,105,638	-91.8%	-\$7,219,112	-91.8%	0.15%	
	\$30.00	1	-\$2,825,730		-35.5%	-\$2,031,555	-35.3%	-\$794,175	-36.0%	0.21%	
	\$50.00	2	-\$6,469,000		n/a	-\$4,616,229	n/a	-\$1,852,771	n/a	0.21%	
Total		-26	-\$39,211,361		-6.8%	-\$27,242,353	-7.0%	-\$13,624,761	-7.3%	-0.13%	

Texas Lottery Commission
Instant Tickets by Price Point
Sales, Prize Expense, Sales Contribution and Payout Percentage With Year Over Year Changes
Unaudited

Notes - Instant Ticket Variances						
		FY 2009		FY 2008		Difference
Sales	\$1 - \$7		\$383,067,088		\$390,956,953	-\$7,889,865
Prize Exp.	\$1 - \$7		\$252,634,109		\$257,451,766	-\$4,817,657
Sales Cont.	\$1 - \$7		\$130,432,979		\$133,505,187	-\$3,072,208
Prize Exp. %	\$1 - \$7		66.0%		65.9%	0.1%
		FY 2009		FY 2008		Difference
Sales	\$10 - \$50		\$156,577,565		\$187,899,061	-\$31,321,496
Prize Exp.	\$10 - \$50		\$111,309,953		\$133,734,649	-\$22,424,696
Sales Cont.	\$10 - \$50		\$45,267,612		\$54,164,412	-\$8,896,800
Prize Exp. %	\$10 - \$50		71.1%		71.2%	-0.1%
		FY 2009		FY 2008		Difference
Sales	Instant		\$539,644,653		\$578,856,014	-\$39,211,361
Prize Exp.	Instant		\$363,944,062		\$391,186,415	-\$27,242,353
Sales Cont.	Instant		\$175,700,591		\$187,669,600	-\$11,969,008
Prize Exp. %	Instant		67.4%		67.6%	-0.1%

		FY 2009		FY 2008		Difference
Sales	\$1 - \$10		\$453,984,838		\$478,953,819	-\$24,968,981
Prize Exp.	\$1 - \$10		\$302,270,667		\$319,051,946	-\$16,781,280
Sales Cont.	\$1 - \$10		\$151,714,171		\$159,901,873	-\$8,187,701
Prize Exp. %	\$1 - \$10		66.6%		66.6%	0.0%
		FY 2009		FY 2008		Difference
Sales	\$20 - \$50		\$85,659,815		\$99,902,195	-\$14,242,380
Prize Exp.	\$20 - \$50		\$61,673,395		\$72,134,468	-\$10,461,073
Sales Cont.	\$20 - \$50		\$23,986,420		\$27,767,727	-\$3,781,307
Prize Exp. %	\$20 - \$50		72.0%		72.2%	-0.2%
		FY 2009		FY 2008		Difference
Sales	Instant		\$539,644,653		\$578,856,014	-\$39,211,361
Prize Exp.	Instant		\$363,944,062		\$391,186,415	-\$27,242,353
Sales Cont.	Instant		\$175,700,591		\$187,669,600	-\$11,969,008
Prize Exp. %	Instant		67.4%		67.6%	-0.1%

Texas Lottery Commission
Weekly Sales Summary
& Comparison to Previous Week
 Unaudited

	Week Ending 11/15/08		Week Ending 11/08/08			
	<u>THIS WEEK</u>	% of Sales	<u>LAST WEEK</u>	% of Sales	<u>\$ change</u>	<u>% change</u>
Total Sales	<u>\$69,314,631</u>		<u>\$70,917,156</u>		<u>-\$1,602,525</u>	-2.26%
Instant Tickets	<u>\$53,484,812</u>	77.2%	<u>\$54,860,087</u>	77.4%	<u>-\$1,375,275</u>	-2.51%
Lotto Texas	\$3,336,934	4.8%	\$3,290,417	4.6%	\$46,517	1.41%
Pick 3	\$5,459,984	7.9%	\$5,686,701	8.0%	-\$226,717	-3.99%
Pick 3 Sum It Up	\$112,884	0.2%	\$118,495	0.2%	-\$5,611	-4.74%
Cash 5	\$1,366,024	2.0%	\$1,397,985	2.0%	-\$31,961	-2.29%
Texas Two Step	\$766,955	1.1%	\$1,158,101	1.6%	-\$391,146	-33.77%
Mega Millions	\$3,102,251	4.5%	\$2,729,303	3.8%	\$372,949	13.66%
Megaplier	\$749,736	1.1%	\$692,662	1.0%	\$57,074	8.24%
Daily 4	\$830,957	1.2%	\$871,230	1.2%	-\$40,273	-4.62%
Daily 4 Sum It Up	\$104,094	0.2%	\$112,176	0.2%	-\$8,082	-7.20%
Total Online Sales	<u>\$15,829,819</u>		<u>\$16,057,069</u>		<u>-\$227,250</u>	-1.42%

* Totals may not sum due to rounding.

Texas Lottery Commission
Weekly Sales Summary
Unaudited

INSTANT TICKETS
TOP TEN SELLING GAMES

For the Week Ending : 11/15/08

Rank	Price Point	Game	Sales (Millions)
1	\$ 10	JINGLE JUNGLE BUCKS	\$ 3.532
2	\$ 5	FANTASTIC 5'S	\$ 2.948
3	\$ 7	SIZZLIN' RED 7'S	\$ 2.934
4	\$ 5	MERRY MONEY	\$ 2.696
5	\$ 3	BONUS CASHWORD	\$ 2.442
6	\$ 20	TEXAS \$50 MILLION CLUB	\$ 2.227
7	\$ 2	SILVER BELLS	\$ 1.877
8	\$ 10	SET FOR LIFE	\$ 1.839
9	\$ 2	BREAK THE BANK	\$ 1.668
10	\$ 50	\$130,000,000 PLATINUM PAYOUT	\$ 1.656

Texas Lottery Commission
Prize Payout Tracking Report
Unaudited

Through Week Ending 11/15/08

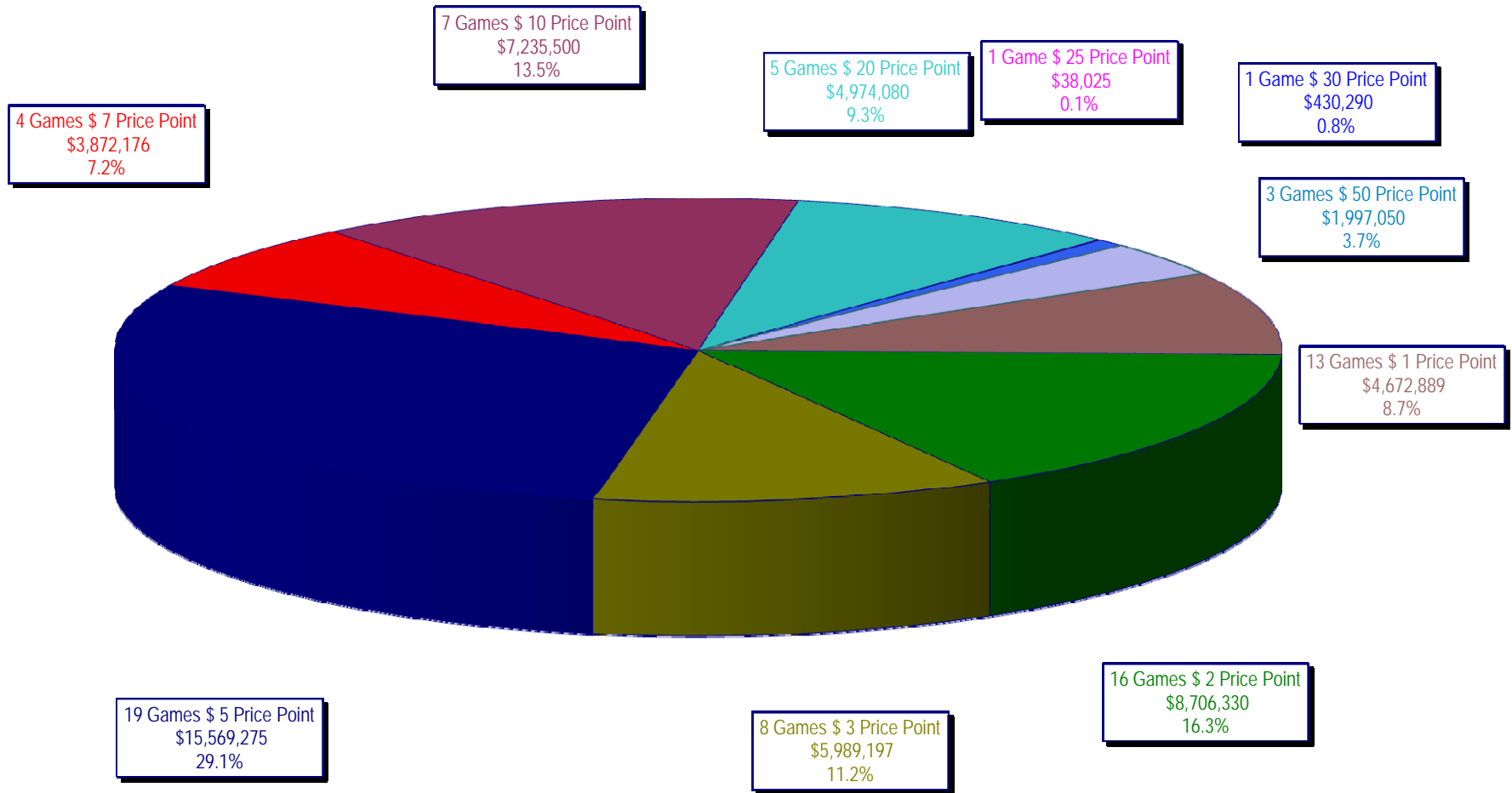
On-Line Sales

		FY Sales Through Week Ending 11/15/2008		FY Prize Expense Through Week Ending 11/15/2008	Actual* Prize Payout	Base Payout (Prize Pool)
Lotto	\$	37,122,996	\$	18,655,494	50.25%	50.00%
Pick 3		56,186,568		26,900,900	47.88%	50.00%
Pick 3 Sum It Up		1,207,670		528,691	43.78%	50.00%
Cash 5		14,600,737		7,391,499	50.62%	50.00%
Texas Two-Step		9,947,320		5,085,963	51.13%	50.00%
Mega Millions		27,087,359		12,404,091	45.79%	50.00%**
Megaplier		7,078,540		2,355,134	33.27%	N/A
Daily 4		8,410,584		3,616,375	43.00%	50.00%
Daily 4-Sum It Up		1,125,185		405,503	36.04%	50.00%
Totals	\$	162,766,958	\$	77,343,650	47.52%	

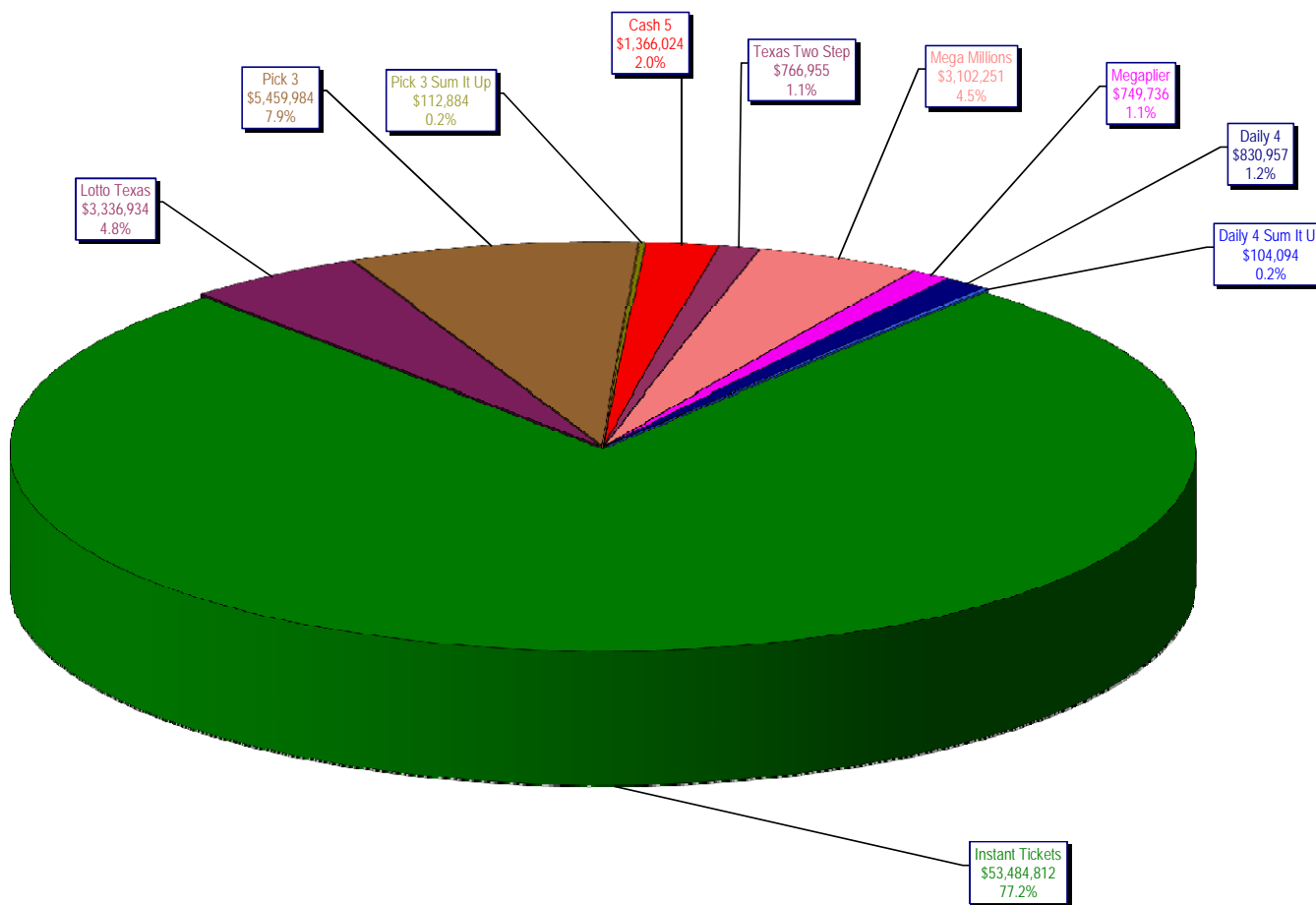
* Before Unclaimed Prizes

** Estimated; depends on # of guaranteed prizes won in Texas

Texas Lottery Commission
Instant Ticket Sales
For the Week Ending 11/15/2008
(Unaudited)



Texas Lottery Commission
All Game Sales
For the Week Ending 11/15/2008
(Unaudited)



* Totals may not sum due to rounding.

Texas Lottery Commission - Weekly Sales Summary for FY 2008 (Unaudited)

Week Ended	Instant Games	New Games & Dates	Lotto Texas	Jackpot		Pick 3	Pick 3 Sum It Up	Cash 5	Texas Two Step	Jackpot		Mega Millions	Jackpot		Megaplier	Daily 4	Daily 4 Sum It Up	Total	Per Cap.
				W	S					M/T	TH/F		T	F					
9/6/2008	50,944,343.00	1108 (\$2,N), 1088 (\$3, N) - 9/01/08	3,378,718.00	5	6	5,436,414.00	122,123.00	1,396,622.00	890,346.00	350	450	2,445,490.00	12	16	649,090.00	786,482.50	109,834.00	66,159,462.50	2.77
9/13/2008	46,309,551.00	1109 (\$1,N), 1098 (\$5, N) - 9/08/08	3,020,089.00	7	8	4,705,585.50	105,899.00	1,279,412.00	856,199.00	600	200	2,327,214.00	24	12	617,672.00	696,633.00	96,156.50	60,014,411.00	2.51
9/20/2008	42,923,171.00	0	3,054,093.00	9	10	4,121,734.50	90,718.00	1,155,350.00	637,792.00	225	250	1,978,127.00	15	12	540,225.00	627,210.00	86,013.50	55,214,434.00	2.31
9/27/2008	47,042,801.00	1111 (\$2,N), 1099 (\$5, N) - 9/22/08	3,427,671.00	11	12	4,821,563.00	103,189.50	1,288,062.00	834,307.00	275	425	2,322,862.00	16	24	617,085.00	709,741.50	97,858.00	61,265,140.00	2.56
10/4/2008	50,747,162.00	1113 (\$1,N) 9/29/08	3,675,683.00	13	14	5,305,711.00	116,332.50	1,369,040.00	1,074,874.00	525	650	2,671,927.00	32	42	693,845.00	770,782.50	106,277.00	66,531,634.00	2.78
10/11/2008	49,763,789.00	0	3,732,365.00	15	16	5,287,094.00	114,665.50	1,370,334.00	1,305,250.00	800	975	2,306,070.00	12	16	622,120.00	778,204.00	106,395.00	65,386,286.50	2.74
10/18/2008	49,299,053.00	1117 (\$3,N), 1118 (\$20,N) - 10/13/08	3,780,438.00	17	18	5,149,258.00	109,530.00	1,355,601.00	741,849.00	200	200	2,500,644.00	23	32	652,198.00	776,366.00	102,056.00	64,466,993.00	2.70
10/25/2008	49,977,581.00	1119 (\$1,N), 1120 (\$5, N) - 10/20/08	3,210,762.00	4	5	5,099,671.00	107,104.50	1,339,079.00	789,649.00	225	275	2,456,965.00	42	12	641,206.00	778,434.00	102,972.50	64,503,424.00	2.70
11/1/2008	50,346,542.00	1121 (\$2,N), 1122 (\$10,N) - 10/27/08	3,325,641.00	6	7	5,234,124.00	109,983.00	1,339,046.00	946,035.00	375	475	2,347,596.00	16	23	626,235.00	805,572.00	104,612.50	65,185,386.50	2.73
11/8/2008	54,860,087.00	1123 (\$3,N), 1124 (\$7,N) - 11/03/08; 1109 (\$3,N) - 11/05/08; 1063 (\$3,N) - 11/07/08	3,290,417.00	4	5	5,686,701.00	118,495.00	1,397,985.00	1,158,101.00	625	750	2,729,302.50	31	42	692,662.00	871,230.00	112,175.50	70,917,156.00	2.97
11/15/2008	53,484,812.00	1125 (\$1, N), 1126 (\$5,N) - 11/10/08	3,336,934.00	6	7	5,459,984.00	112,884.00	1,366,024.00	766,955.00	200	225	3,102,251.00	51	62	749,736.00	830,957.00	104,094.00	69,314,631.00	2.90
weekly change	-2.51%		1.41%			-3.99%	-4.74%	-2.29%	-33.77%			13.66%			8.24%	-4.62%	-7.20%	-2.26%	
SALES																			
Startup to date	34,020,230,655.00	\$ = Price Point	10,316,220,043.00			3,354,905,520.50	7,693,500.00	2,133,756,747.00	436,213,038.00			953,225,953.50			225,286,574.00	50,627,555.00	9,463,988.00	51,715,757,546.00	100.0%
Calendar Year to date	2,399,025,053.00	\$ = Price Point	171,305,581.00			249,444,770.00	6,279,897.00	64,631,216.00	43,811,198.00			152,706,654.50			36,337,921.00	37,252,139.50	5,882,698.50	3,166,677,128.50	100.0%
Fiscal Year to date 2009	539,644,653.00	\$ = Price Point	37,122,996.00			56,186,568.00	1,207,670.00	14,600,737.00	9,947,320.00			27,087,358.50			7,078,540.00	8,410,583.50	1,125,184.50	702,411,610.50	100.0%