



*WEEKLY SALES SUMMARY*

Unaudited

[Week Ending: 11/15/2014](#)

Texas Lottery Commission  
Fiscal Year to Date Sales Comparison  
Unaudited

Through the Week Ending 11/15/2014 (11 Weeks)

Sales by Game	FY 2013 *	FY 2014 **	FY 2015	\$ Change		% Change	
				FY 2015 to FY 2013	FY 2015 to FY 2014	FY 2015 to FY 2013	FY 2015 to FY 2014
Instants	\$ 632,588,695	\$ 659,280,589	\$ 673,642,256	\$ 41,053,561	\$ 14,361,667	6.5%	2.2%
Lotto Texas	34,828,825	28,617,256	25,105,830	-9,722,995	-3,511,426	-27.9%	-12.3%
Lotto Extra	-	3,600,247	3,780,166	3,780,166	179,919	-	5.0%
Pick 3	56,599,690	53,239,419	51,772,897	-4,826,793	-1,466,522	-8.5%	-2.8%
Pick 3 Sum It Up	1,066,946	1,056,935	997,442	-69,504	-59,493	-6.5%	-5.6%
Cash Five	12,229,973	11,121,620	10,393,209	-1,836,764	-728,411	-15.0%	-6.5%
Texas Two Step	11,321,993	12,215,263	12,284,408	962,415	69,145	8.5%	0.6%
Mega Millions	23,281,038	28,914,076	35,916,811	12,635,773	7,002,735	54.3%	24.2%
Megaplier	5,383,093	6,394,885	8,020,388	2,637,295	1,625,503	49.0%	25.4%
Daily 4	14,878,027	17,450,825	17,284,050	2,406,023	-166,775	16.2%	-1.0%
Daily 4 Sum It Up	1,008,527	1,081,458	1,049,430	40,904	-32,028	4.1%	-3.0%
Powerball	38,382,852	54,565,255	38,891,439	508,587	-15,673,816	1.3%	-28.7%
Power Play	4,714,037	6,191,618	5,005,942	291,905	-1,185,676	6.2%	-19.1%
All or Nothing	21,422,303	10,225,348	8,337,774	-13,084,529	-1,887,574	-61.1%	-18.5%
Monopoly	-	-	1,526,755	1,526,755	1,526,755	-	-
<b>Total</b>	<b>\$ 857,705,998</b>	<b>\$ 893,954,793</b>	<b>\$ 894,008,796</b>	<b>\$ 36,302,798</b>	<b>\$ 54,004</b>	<b>4.2%</b>	<b>0.0%</b>

\* 2 extra days

\*\* 1 extra day

Texas Lottery Commission  
 Fiscal Year to Date Cumulative Average Sales Comparison  
 Unaudited

Through the Week Ending 11/15/2014 (11 Weeks)

Sales by Game	FY 2013	FY 2014	FY 2015
Instant	\$ 8,110,111	\$ 8,562,086	\$ 8,863,714
Lotto Texas	446,523	371,653	330,340
Lotto Extra	-	46,756	49,739
Pick 3	725,637	691,421	681,222
Pick 3 Sum It Up	13,679	13,726	13,124
Cash Five	156,795	144,437	136,753
Texas Two Step	145,154	158,640	161,637
Mega Millions	298,475	375,507	472,590
Megaplier	69,014	83,050	105,531
Daily 4	190,744	226,634	227,422
Daily 4 Sum It Up	12,930	14,045	13,808
Powerball	492,088	708,640	511,729
Power Play	60,436	80,411	65,868
All or Nothing	* 306,033	132,797	109,708
Monopoly	-	- **	54,527
<b>Total</b>	<b>\$ 11,027,619</b>	<b>\$ 11,609,803</b>	<b>\$ 11,797,712</b>

	thru 11/17/2012	thru 11/16/2013	thru 11/15/2014
	78 days	77 days	76 days
*	70 days		** 28 days

Texas Lottery Commission  
Fiscal Year Over Year Change in Sales  
Unaudited  
FY 2015 Compared to FY 2014

			INSTANT TICKETS				DRAW GAMES				TOTAL SALES			
Week	FY 2015		FY 2015	FY 2014	Difference	% change - Cumulative Sales	FY 2015	FY 2014	Difference	% change - Cumulative Sales	FY 2015	FY 2014	Difference	% change - Cumulative Sales
	Week	Ending												
1	9/6/2014 *		\$54,911,801	\$58,587,757	(\$3,675,956)	-6.3%	\$17,482,488	\$22,369,499	(\$4,887,011)	-21.8%	\$72,394,289	\$80,957,256	(\$8,562,967)	-10.6%
2	9/13/2014		\$61,436,533	\$57,135,931	\$4,300,602	7.5%	\$19,097,081	\$25,412,980	(\$6,315,899)	-24.9%	\$80,533,614	\$82,548,911	(\$2,015,297)	-2.4%
3	9/20/2014		\$60,959,234	\$59,018,194	\$1,941,040	3.3%	\$20,567,894	\$29,161,241	(\$8,593,347)	-29.5%	\$81,527,128	\$88,179,435	(\$6,652,307)	-7.5%
4	9/27/2014		\$59,710,056	\$57,927,984	\$1,782,072	3.1%	\$19,920,828	\$20,012,313	(\$91,485)	-0.5%	\$79,630,884	\$77,940,297	\$1,690,588	2.2%
5	10/4/2014		\$62,119,854	\$62,146,816	(\$26,962)	0.0%	\$18,531,421	\$20,043,557	(\$1,512,136)	-7.5%	\$80,651,275	\$82,190,373	(\$1,539,098)	-1.9%
6	10/11/2014		\$61,253,665	\$60,867,582	\$386,083	0.6%	\$18,985,332	\$19,480,962	(\$495,631)	-2.5%	\$80,238,997	\$80,348,544	(\$109,548)	-0.1%
7	10/18/2014		\$60,230,048	\$60,612,193	(\$382,145)	-0.6%	\$19,538,402	\$20,079,610	(\$541,209)	-2.7%	\$79,768,450	\$80,691,803	(\$923,354)	-1.1%
8	10/25/2014		\$62,384,112	\$59,548,277	\$2,835,835	4.8%	\$21,475,643	\$19,319,928	\$2,155,715	11.2%	\$83,859,755	\$78,868,205	\$4,991,550	6.3%
9	11/1/2014		\$63,404,713	\$61,710,236	\$1,694,477	2.7%	\$23,568,817	\$18,308,976	\$5,259,842	28.7%	\$86,973,530	\$80,019,212	\$6,954,319	8.7%
10	11/8/2014		\$65,486,719	\$61,668,594	\$3,818,125	6.2%	\$23,749,032	\$19,555,070	\$4,193,963	21.4%	\$89,235,751	\$81,223,664	\$8,012,088	9.9%
11	11/15/2014		\$61,745,521	\$60,057,025	\$1,688,496	2.8%	\$17,449,604	\$20,930,071	(\$3,480,468)	-16.6%	\$79,195,125	\$80,987,096	(\$1,791,972)	-2.2%
12	11/22/2014			\$63,118,266				\$19,086,770				\$82,205,036		
13	11/29/2014			\$57,145,294				\$20,434,618				\$77,579,912		
14	12/6/2014			\$59,883,783				\$22,791,842				\$82,675,625		
15	12/13/2014			\$60,310,298				\$35,859,153				\$96,169,451		
16	12/20/2014			\$65,088,999				\$46,832,745				\$111,921,744		
17	12/27/2014			\$67,721,619				\$18,218,091				\$85,939,710		
18	1/3/2015			\$67,162,991				\$19,140,745				\$86,303,736		
19	1/10/2015			\$65,049,914				\$17,954,333				\$83,004,247		
20	1/17/2015			\$62,731,830				\$18,900,213				\$81,632,043		
21	1/24/2015			\$59,085,886				\$19,558,830				\$78,644,716		
22	1/31/2015			\$64,099,096				\$20,764,006				\$84,863,102		
23	2/7/2015			\$67,717,353				\$22,433,672				\$90,151,025		
24	2/14/2015			\$69,949,998				\$25,572,367				\$95,522,365		
25	2/21/2015			\$72,422,148				\$31,832,665				\$104,254,813		
26	2/28/2015			\$72,883,830				\$21,827,140				\$94,710,970		
27	3/7/2015			\$73,726,744				\$22,528,352				\$96,255,096		
28	3/14/2015			\$71,026,808				\$25,171,358				\$96,198,166		
29	3/21/2015			\$69,174,125				\$25,837,564				\$95,011,689		
30	3/28/2015			\$66,886,917				\$18,604,870				\$85,491,787		
31	4/4/2015			\$71,218,020				\$19,883,667				\$91,101,687		
32	4/11/2015			\$65,970,648				\$18,875,485				\$84,846,133		
33	4/18/2015			\$64,922,280				\$19,723,048				\$84,645,328		
34	4/25/2015			\$60,578,829				\$18,978,148				\$79,556,977		
35	5/2/2015			\$64,244,545				\$19,029,632				\$83,274,177		
36	5/9/2015			\$65,679,029				\$19,350,478				\$85,029,507		
37	5/16/2015			\$63,627,971				\$19,865,609				\$83,493,580		
38	5/23/2015			\$61,902,451				\$19,892,846				\$81,795,297		
39	5/30/2015			\$61,264,953				\$20,014,636				\$81,279,589		
40	6/6/2015			\$64,019,948				\$21,782,886				\$85,802,834		
41	6/13/2015			\$59,742,598				\$19,736,748				\$79,479,346		
42	6/20/2015			\$59,010,863				\$17,095,336				\$76,106,199		

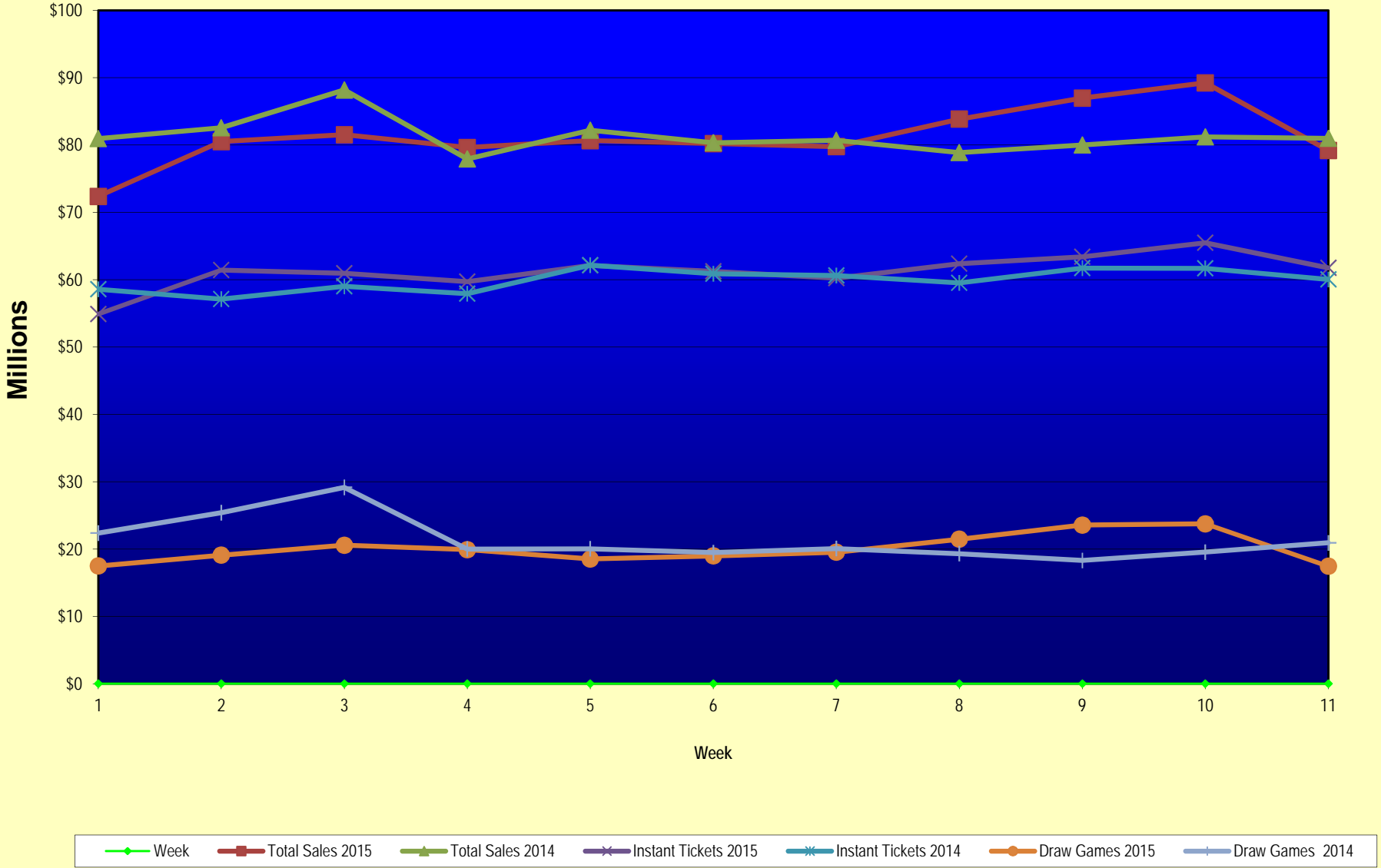
Texas Lottery Commission  
Fiscal Year Over Year Change in Sales  
Unaudited  
FY 2015 Compared to FY 2014

			INSTANT TICKETS				DRAW GAMES				TOTAL SALES			
FY 2015			FY 2015	FY 2014	Difference	% change - Cumulative Sales	FY 2015	FY 2014	Difference	% change - Cumulative Sales	FY 2015	FY 2014	Difference	% change - Cumulative Sales
Week	Week	Ending												
43	6/27/2015			\$58,102,191				\$17,635,736				\$75,737,927		
44	7/4/2015			\$61,566,071				\$18,521,529				\$80,087,600		
45	7/11/2015			\$58,729,674				\$17,913,387				\$76,643,061		
46	7/18/2015			\$58,202,035				\$17,602,032				\$75,804,067		
47	7/25/2015			\$57,220,932				\$17,736,889				\$74,957,821		
48	8/1/2015			\$64,207,294				\$18,208,743				\$82,416,037		
49	8/8/2015			\$60,066,007				\$19,022,945				\$79,088,952		
50	8/15/2015			\$58,374,809				\$18,567,246				\$76,942,055		
51	8/22/2015			\$57,277,475				\$18,916,460				\$76,193,935		
52	8/29/2015			\$61,884,256				\$17,283,925				\$79,168,181		
	8/31/2015 **			\$7,949,803				\$706,956				\$8,656,759		
Total thru Current Week			\$673,642,256	\$659,280,589	\$14,361,667	2.2%	\$220,366,540	\$234,674,204	(\$14,307,664)	-6.1%	\$894,008,796	\$893,954,793	\$54,004	0.0%
Fiscal Year Total			\$673,642,256	\$3,280,229,170			\$220,366,540	\$1,104,367,893			\$894,008,796	\$4,384,597,063		

\* FY 15 includes 6 days

\*\* FY 15 includes 2 days; FY 14 includes 1 day

### Texas Lottery Commission Fiscal Year Over Year Change in Sales



Note: Week 1 is not a full week of sales as this report is prepared on a Fiscal Year basis.

Texas Lottery Commission  
Instant Tickets by Price Point  
Sales, Prize Expense, Sales Contribution and Payout Percentage With Year Over Year Changes  
Unaudited

Fiscal Year	Price Point	# of Active Games	FY Sales	% of Instant Ticket Sales	Year over Year Change in Sales	FY Prize Expense	Year over Year Change in Prize Expense	FY Sales Contribution	Year over Year Change in Contribution	Average Prize Payout %	Year over Year Change in Payout %
2014	\$1.00	21	38,675,504	5.9%		23,178,308		15,497,196		59.9%	-1.3%
Through	\$2.00	27	79,850,018	12.1%		51,853,111		27,996,907		64.9%	-0.1%
11/16/2013	\$3.00	14	71,771,112	10.9%		46,986,351		24,784,761		65.5%	-0.1%
	\$5.00	35	216,112,265	32.8%		146,802,841		69,309,424		67.9%	-0.1%
	\$10.00	11	122,458,090	18.6%		86,512,851		35,945,239		70.6%	-0.6%
	\$20.00	8	105,358,500	16.0%		78,896,876		26,461,624		74.9%	0.0%
	\$50.00	2	25,055,100	3.8%		19,451,508		5,603,592		77.6%	0.0%
<b>Total</b>		<b>118</b>	<b>\$659,280,589</b>			<b>\$453,681,845</b>		<b>\$205,598,744</b>		<b>68.8%</b>	<b>-0.2%</b>
2015	\$1.00	16	34,239,377	5.1%		21,195,304		13,044,073		61.9%	3.3%
thru	\$2.00	24	70,564,648	10.5%		47,090,595		23,474,053		66.7%	2.9%
11/15/2014	\$3.00	11	67,198,341	10.0%		44,290,372		22,907,969		65.9%	0.4%
	\$5.00	34	213,731,530	31.7%		145,191,475		68,540,055		67.9%	0.0%
	\$10.00	13	137,680,340	20.4%		97,244,136		40,436,204		70.6%	0.5%
	\$20.00	8	118,988,520	17.7%		89,235,095		29,753,425		75.0%	0.2%
	\$50.00	3	31,239,500	4.6%		24,276,800		6,962,700		77.7%	0.0%
<b>Total</b>		<b>109</b>	<b>\$673,642,256</b>			<b>\$468,523,776</b>		<b>\$205,118,480</b>		<b>69.6%</b>	<b>0.9%</b>
Variance	\$1.00	-5	-4,436,127		-11.5%	-1,983,004	-8.6%	-2,453,123	-15.8%	1.97%	
2015 to	\$2.00	-3	-9,285,370		-11.6%	-4,762,517	-9.2%	-4,522,853	-16.2%	1.80%	
2014	\$3.00	-3	-4,572,771		-6.4%	-2,695,979	-5.7%	-1,876,792	-7.6%	0.44%	
	\$5.00	-1	-2,380,735		-1.1%	-1,611,366	-1.1%	-769,369	-1.1%	0.00%	
	\$10.00	2	15,222,250		12.4%	10,731,285	12.4%	4,490,965	12.5%	-0.02%	
	\$20.00	0	13,630,020		12.9%	10,338,219	13.1%	3,291,801	12.4%	0.11%	
	\$50.00	1	6,184,400		24.7%	4,825,292	24.8%	1,359,108	24.3%	0.08%	
<b>Total</b>		<b>-9</b>	<b>\$14,361,667</b>		<b>2.2%</b>	<b>\$14,841,931</b>	<b>3.3%</b>	<b>-\$480,264</b>	<b>-0.2%</b>	<b>0.74%</b>	

Notes - Instant Ticket Variances

Texas Lottery Commission  
**Instant Tickets by Price Point**  
**Sales, Prize Expense, Sales Contribution and Payout Percentage With Year Over Year Changes**  
 Unaudited

			FY 2015		FY 2014	Difference
Sales	\$1 - \$5		\$385,733,896		\$406,408,899	-\$20,675,003
Prize Exp.	\$1 - \$5		\$257,767,745		\$268,820,611	-\$11,052,866
Sales Cont.	\$1 - \$5		\$127,966,151		\$137,588,288	-\$9,622,137
Prize Exp. %	\$1 - \$5		66.8%		66.1%	0.7%
			FY 2015		FY 2014	Difference
Sales	\$10 - \$50		\$287,908,360		\$252,871,690	\$35,036,670
Prize Exp.	\$10 - \$50		\$210,756,031		\$184,861,234	\$25,894,797
Sales Cont.	\$10 - \$50		\$77,152,329		\$68,010,456	\$9,141,873
Prize Exp. %	\$10 - \$50		73.2%		73.1%	0.1%
			FY 2015		FY 2014	Difference
Sales	Instant		\$673,642,256		\$659,280,589	\$14,361,667
Prize Exp.	Instant		\$468,523,776		\$453,681,845	\$14,841,931
Sales Cont.	Instant		\$205,118,480		\$205,598,744	-\$480,264
Prize Exp. %	Instant		69.6%		68.8%	0.7%

			FY 2015		FY 2014	Difference
Sales	\$1 - \$10		\$523,414,236		\$528,866,989	-\$5,452,753
Prize Exp.	\$1 - \$10		\$355,011,881		\$355,333,462	-\$321,580
Sales Cont.	\$1 - \$10		\$168,402,355		\$173,533,527	-\$5,131,173
Prize Exp. %	\$1 - \$10		67.8%		67.2%	0.6%
			FY 2015		FY 2014	Difference
Sales	\$20 - \$50		\$150,228,020		\$130,413,600	\$19,814,420
Prize Exp.	\$20 - \$50		\$113,511,895		\$98,348,384	\$15,163,511
Sales Cont.	\$20 - \$50		\$36,716,125		\$32,065,216	\$4,650,909
Prize Exp. %	\$20 - \$50		75.6%		75.4%	0.1%
			FY 2015		FY 2014	Difference
Sales	Instant		\$673,642,256		\$659,280,589	\$14,361,667
Prize Exp.	Instant		\$468,523,776		\$453,681,845	\$14,841,931
Sales Cont.	Instant		\$205,118,480		\$205,598,744	-\$480,264
Prize Exp. %	Instant		69.6%		68.8%	0.7%



Texas Lottery Commission  
**Weekly Sales Summary**  
**& Comparison to Previous Week**  
 Unaudited

	Week Ending 11/15/2014	% of Sales	Week Ending 11/08/2014	% of Sales	\$ change	% change
	<u>THIS WEEK</u>		<u>LAST WEEK</u>			
Total Sales	<u>\$79,195,125</u>		<u>\$89,235,751</u>		<u>-\$10,040,627</u>	-11.25%
Instant Tickets	<u>\$61,745,521</u>	78.0%	<u>\$65,486,719</u>	73.4%	<u>-\$3,741,198</u>	-5.71%
Lotto	\$2,172,758	2.7%	\$2,269,671	2.5%	-\$96,913	-4.27%
Lotto Extra	\$326,413	0.4%	\$345,144	0.4%	-\$18,731	-5.43%
Pick 3	\$4,582,139	5.8%	\$4,823,896	5.4%	-\$241,757	-5.01%
Pick 3 Sum It Up	\$86,975	0.1%	\$92,098	0.1%	-\$5,123	-5.56%
Cash Five	\$936,682	1.2%	\$958,406	1.1%	-\$21,724	-2.27%
Texas Two Step	\$1,604,425	2.0%	\$1,336,742	1.5%	\$267,683	20.03%
Mega Millions	\$1,863,118	2.4%	\$4,908,320	5.5%	-\$3,045,202	-62.04%
Megaplier	\$471,023	0.6%	\$1,013,337	1.1%	-\$542,314	-53.52%
Daily 4	\$1,587,677	2.0%	\$1,669,728	1.9%	-\$82,051	-4.91%
Daily 4 Sum It Up	\$91,661	0.1%	\$97,535	0.1%	-\$5,874	-6.02%
Powerball	\$2,341,252	3.0%	\$4,560,744	5.1%	-\$2,219,492	-48.67%
Power Play	\$329,995	0.4%	\$561,387	0.6%	-\$231,392	-41.22%
All or Nothing	\$730,482	0.9%	\$753,046	0.8%	-\$22,564	-3.00%
Monopoly	\$325,005	0.4%	\$358,980	0.0%	-\$33,975	-9.46%
Total Draw Game Sales	<u>\$17,449,604</u>		<u>\$23,749,032</u>		<u>-\$6,299,429</u>	-26.52%

\* Totals may not sum due to rounding.

Texas Lottery Commission  
Weekly Sales Summary  
Unaudited

INSTANT TICKETS  
TOP TEN SELLING GAMES

For the Week Ending: 11/08/14

Rank	Price Point	Game	Sales (Millions)
1	\$ 20	HOLIDAY GAME BOOK	\$ 5.075
2	\$ 10	HOLIDAY MAGIC	\$ 3.587
3	\$ 5	HOLIDAY GOLD	\$ 3.330
4	\$ 10	\$200,000,000 CASH BLOWOUT	\$ 2.399
5	\$ 50	MILLIONNAIRE'S CLUB	\$ 2.375
6	\$ 3	BONUS CASHWORD	\$ 2.225
7	\$ 5	\$100,000 MERRY MONEY	\$ 2.155
8	\$ 20	100X THE CASH	\$ 1.998
9	\$ 20	ONE MILLION CASH	\$ 1.933
10	\$ 3	LOTERIA	\$ 1.811

Texas Lottery Commission  
Prize Payout Tracking Report  
Unaudited

Through the Week Ending: 11/15/14

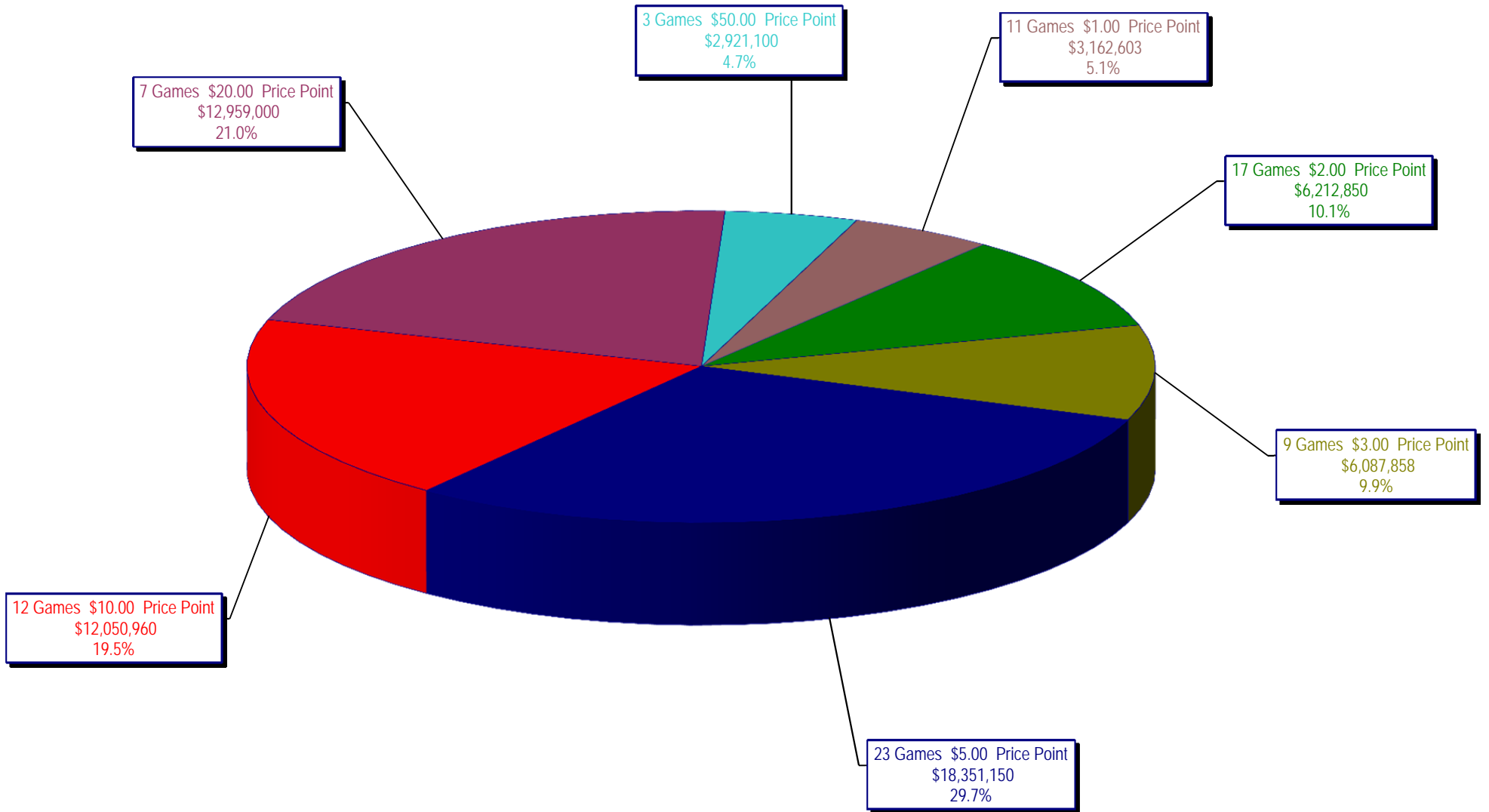
Draw Game Sales

		FY Sales Through Week Ending 11/15/2014		FY Prize Expense Through Week Ending 11/15/2014	Actual* Prize Payout	Base Payout (Prize Pool)
Lotto	\$	25,105,830	\$	12,653,937	50.40%	54.00%
Lotto Extra		3,780,166		2,015,746	53.32%	53.70%
Pick 3		51,772,897		24,200,850	46.74%	50.00%
Pick 3 Sum It Up		997,442		441,389	44.25%	50.00%
Cash Five		10,393,209		5,196,605	50.00%	50.00%
Texas Two Step		12,284,408		6,309,284	51.36%	50.00%
Mega Millions		35,916,811		18,358,992	51.12%	50.00%**
Megaplier		8,020,388		4,018,268	50.10%	N/A
Daily 4		17,284,050		8,140,125	47.10%	50.00%
Daily 4 Sum It Up		1,049,430		378,090	36.03%	50.00%
Powerball		38,891,439		19,521,921	50.20%	50.00%**
Power Play		5,005,942		2,513,112	50.20%	N/A
All or Nothing		8,337,774		5,712,122	68.51%	55.98%
Monopoly		1,526,755		2,701,331	176.93%	50.00%
<b>Totals</b>	\$	<b>220,366,540</b>	\$	<b>112,161,770</b>	<b>50.90%</b>	

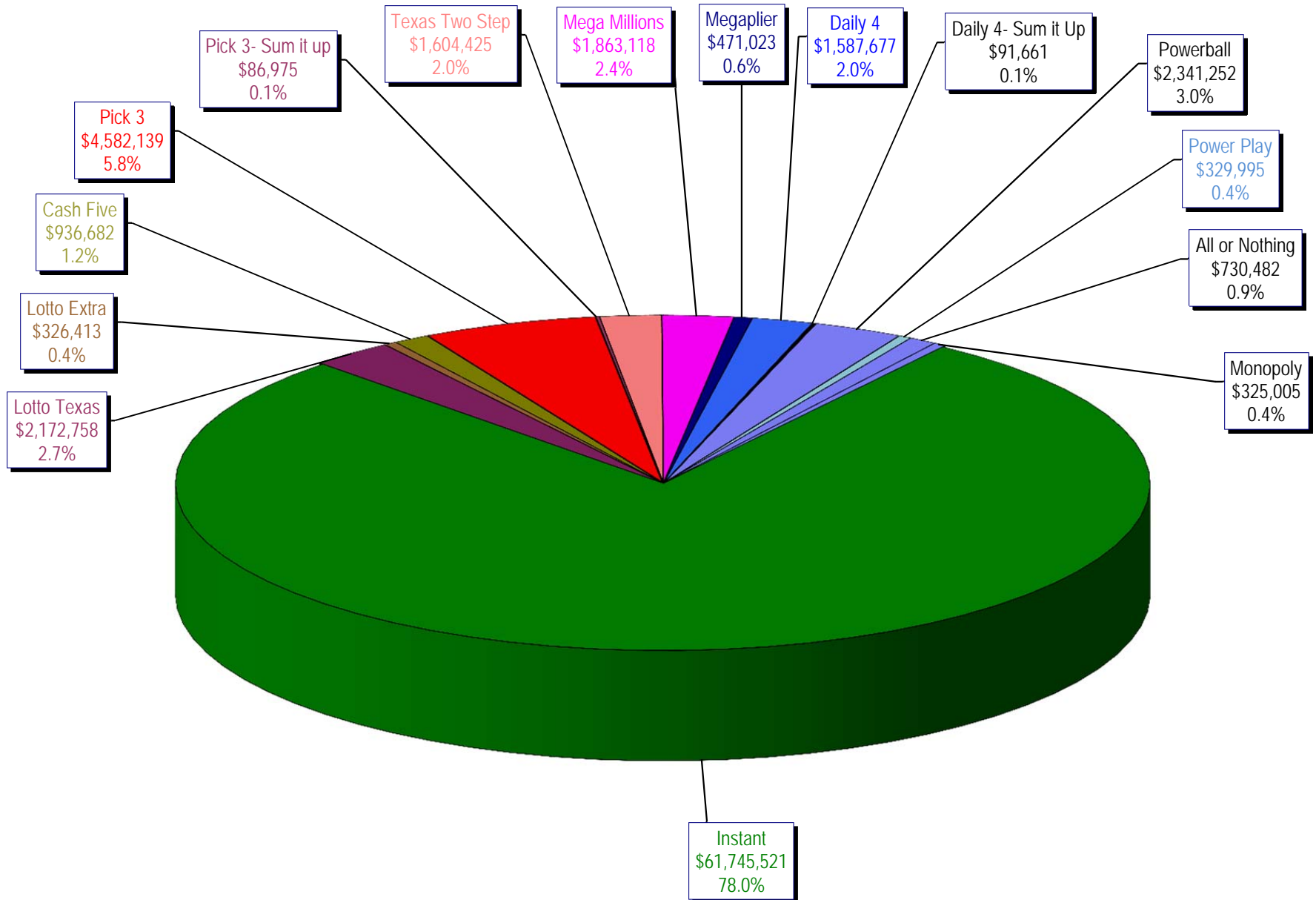
\* Before Unclaimed Prizes

\*\* Estimated; depends on # of guaranteed prizes won in Texas

Texas Lottery Commission  
Instant Ticket Sales  
For the Week Ending 11/15/14  
(Unaudited)



**Texas Lottery Commission**  
**All Game Sales**  
**For the Week Ending 11/15/14**  
**(Unaudited)**



Texas Lottery Commission - Weekly Sales Summary for FY 2015 (Unaudited)

Week Ended	Instant Games	New Games & Dates	Lotto Texas	Jackpot W S	Lotto Extra	Pick 3	Pick 3 Sum It Up	Cash Five	Texas Two Step	Jackpot M TH	Mega Millions	Jackpot T F	Megaplier	Daily 4	Daily 4 Sum It Up	Powerball	Jackpot W S	Power Play	All or Nothing	Monopoly	Jackpot F	Total	Per Cap.	
9/06/2014*	62,861,604	1589 (\$1.N); 1592 (\$5.N) - 9/1/14	2,281,237	6 6.25	341,232	4,827,600	92,305	958,777	918,635	225 300	1,847,432	25 33	475,313	1,640,023	104,626	3,465,202	100 110	450,723	786,340			81,051,048	3.11	
9/13/2014	61,436,533	0	2,299,834	6.5 6.75	344,225	4,787,666	91,850	960,067	1,214,553	425 575	1,992,737	41 52	501,468	1,571,433	97,036	3,957,407	127 149	497,718	781,088			80,533,614	3.09	
9/20/2014	60,959,234	1647 (\$2.N); 1619 (\$5.N) - 9/15/14	2,307,003	7 7.25	347,119	4,624,949	89,960	952,214	1,582,291	750 925	2,149,120	62 72	528,733	1,536,913	95,355	4,985,548	171 196	597,868	770,822			81,527,128	3.13	
9/27/2014	59,710,056	0	2,357,199	7.5 8.25	353,734	4,540,964	89,289	938,745	1,244,640	1,175 200	2,417,365	83 93	579,889	1,512,957	91,998	4,478,698	225 40	544,723	770,628			79,630,884	3.06	
10/4/2014	62,119,854	0	2,385,322	9 9.5	360,937	4,942,321	94,197	971,047	854,141	200 200	2,966,004	105 120	692,825	1,588,795	98,392	2,443,237	50 60	348,166	786,038			80,651,275	3.09	
10/11/2014	61,253,665	1608 (\$1.N); 1653 (\$5.N); 1651 (\$10.N) - 10/6/14	2,363,624	10.25 11	355,219	4,893,634	94,926	959,659	935,385	225 300	3,310,874	136 150	748,248	1,580,735	94,717	2,522,774	70 80	356,145	769,392			80,238,997	3.08	
10/18/2014	60,230,048	0	2,267,582	11.5 5	343,643	4,664,420	92,081	946,399	842,255	200 225	3,839,669	166 180	841,086	1,522,939	90,307	2,937,145	90 100	398,723	752,154			79,768,450	3.06	
10/25/2014	62,384,112	1655 (\$1.N); 1652 (\$2.N); 1638 (\$10.N); 1637 (\$20.N) - 10/20/14	2,201,043	5.25 5.5	330,460	4,585,640	89,676	933,854	823,726	200 225	4,755,898	200 224	990,074	1,560,894	96,697	3,449,128	110 125	444,897	746,246	467,410	15		83,859,755	3.22
11/1/2014	63,404,713	1648 (\$3.N) - 10/31/14	2,289,864	5.75 6	346,139	4,620,420	87,141	925,312	993,957	300 425	5,950,540	252 284	1,199,010	1,554,893	93,945	3,903,664	142 159	494,803	733,770	375,360	18		86,973,530	3.34
11/8/2014	65,486,719	1600 (\$2.N); 1656 (\$5.N); 11/3/14	2,269,671	6.25 6.5	345,144	4,823,896	92,098	958,406	1,336,742	550 700	4,908,320	321 15	1,013,337	1,669,728	97,535	4,560,744	178 203	561,387	753,046	358,980	21		89,235,751	3.42
11/15/2014	61,745,521	1649 (\$5.N) - 11/13/14	2,172,758	6.75 7	326,413	4,582,139	86,975	936,682	1,604,425	900 1,100	1,863,118	20 26	471,023	1,587,677	91,661	2,341,252	40 50	329,995	730,482	325,005	15		79,195,125	3.04
weekly change	-5.7%		-4.3%		-5.4%	-5.0%	-5.6%	-2.3%	20.0%		-62.0%		-53.5%	-4.9%	-6.0%	-48.7%		-41.2%	-3.0%	-9.5%			-9.5%	
	<b>SALES</b>		<b>SALES</b>		<b>SALES</b>	<b>SALES</b>	<b>SALES</b>	<b>SALES</b>	<b>SALES</b>	<b>SALES</b>	<b>SALES</b>	<b>SALES</b>	<b>SALES</b>	<b>SALES</b>	<b>SALES</b>	<b>SALES</b>	<b>SALES</b>	<b>SALES</b>	<b>SALES</b>	<b>SALES</b>	<b>SALES</b>	<b>SALES</b>	<b>% of Sales</b>	
Calendar Year to date	2,893,744,532		116,365,343		16,813,729	222,482,182	4,384,021	45,192,090	50,518,953		131,432,845		30,397,954	73,066,220	4,501,612	163,225,555		20,715,879	39,115,571	1,526,755		3,813,483,239	100.0%	
Fiscal Year to date 2015	673,642,256		25,105,830		3,780,166	51,772,897	997,442	10,393,209	12,284,408		35,916,811		8,020,388	17,284,050	1,049,430	38,891,439		5,005,942	8,337,774	1,526,755		894,008,796	100.0%	
*Full week includes 1 day from FY14																								