



*WEEKLY SALES SUMMARY*

Unaudited

[Week Ending: 11/16/2013](#)

Texas Lottery Commission  
Fiscal Year to Date Sales Comparison  
Unaudited

Through the Week Ending 11/16/2013 (11 Weeks)

Sales by Game	FY 2012 *	FY 2013 **	FY 2014	\$ Change		% Change	
				FY 2014 to FY 2012	FY 2014 to FY 2013	FY 2014 to FY 2012	FY 2014 to FY 2013
Instants	\$ 604,018,449	\$ 632,588,695	\$ 659,280,589	\$ 55,262,140	\$ 26,691,894	9.1%	4.2%
Lotto Texas	38,437,281	34,828,825	28,617,256	-9,820,025	-6,211,569	-25.5%	-17.8%
Lotto Extra	-	-	3,600,247	3,600,247	3,600,247	-	-
Pick 3	57,519,653	56,599,690	53,239,419	-4,280,235	-3,360,271	-7.4%	-5.9%
Pick 3 Sum It Up	1,167,141	1,066,946	1,056,935	-110,207	-10,012	-9.4%	-0.9%
Cash Five	14,053,834	12,229,973	11,121,620	-2,932,214	-1,108,353	-20.9%	-9.1%
Texas Two Step	14,039,555	11,321,993	12,215,263	-1,824,292	893,270	-13.0%	7.9%
Mega Millions	30,192,011	23,281,038	28,914,076	-1,277,935	5,633,038	-4.2%	24.2%
Megaplier	6,901,888	5,383,093	6,394,885	-507,003	1,011,792	-7.3%	18.8%
Daily 4	13,386,345	14,878,027	17,450,825	4,064,480	2,572,798	30.4%	17.3%
Daily 4 Sum It Up	1,006,831	1,008,527	1,081,458	74,627	72,932	7.4%	7.2%
Powerball	30,031,315	38,382,852	54,565,255	24,533,940	16,182,403	81.7%	42.2%
Power Play	6,407,003	4,714,037	6,191,618	-215,385	1,477,581	-3.4%	31.3%
All or Nothing	-	21,422,303	10,225,348	10,225,348	-11,196,955	-	-52.3%
<b>Total</b>	<b>\$ 817,161,306</b>	<b>\$ 857,705,998</b>	<b>\$ 893,954,793</b>	<b>\$ 76,793,487</b>	<b>\$ 36,248,795</b>	<b>9.4%</b>	<b>4.2%</b>

\* 3 extra days

\*\* 1 extra day

Texas Lottery Commission  
 Fiscal Year to Date Cumulative Average Sales Comparison  
 Unaudited

Through the Week Ending 11/16/2013 (11 Weeks)

Sales by Game	FY 2012	FY 2013	FY 2014
Instants	\$ 7,550,231	\$ 8,110,111	\$ 8,562,086
Lotto Texas	480,466	446,523	371,653
Lotto Extra	-	-	46,756
Pick 3	718,996	725,637	691,421
Pick 3 Sum It Up	14,589	13,679	13,726
Cash Five	175,673	156,795	144,437
Texas Two Step	175,494	145,154	158,640
Mega Millions	377,400	298,475	375,507
Megaplier	86,274	69,014	83,050
Daily 4	167,329	190,744	226,634
Daily 4 Sum It Up	12,585	12,930	14,045
Powerball	375,391	492,088	708,640
Power Play	80,088	60,436	80,411
All or Nothing	- *	306,033	132,797
<b>Total</b>	<b>\$ <u>10,214,516</u></b>	<b>\$ <u>11,027,619</u></b>	<b>\$ <u>11,609,803</u></b>

thru 11/19/2011  
80 days

thru 11/17/2012  
78 days  
70 days

thru 11/16/2013  
77 days

\*

Texas Lottery Commission  
Fiscal Year Over Year Change in Sales  
Unaudited  
FY 2014 Compared to FY 2013

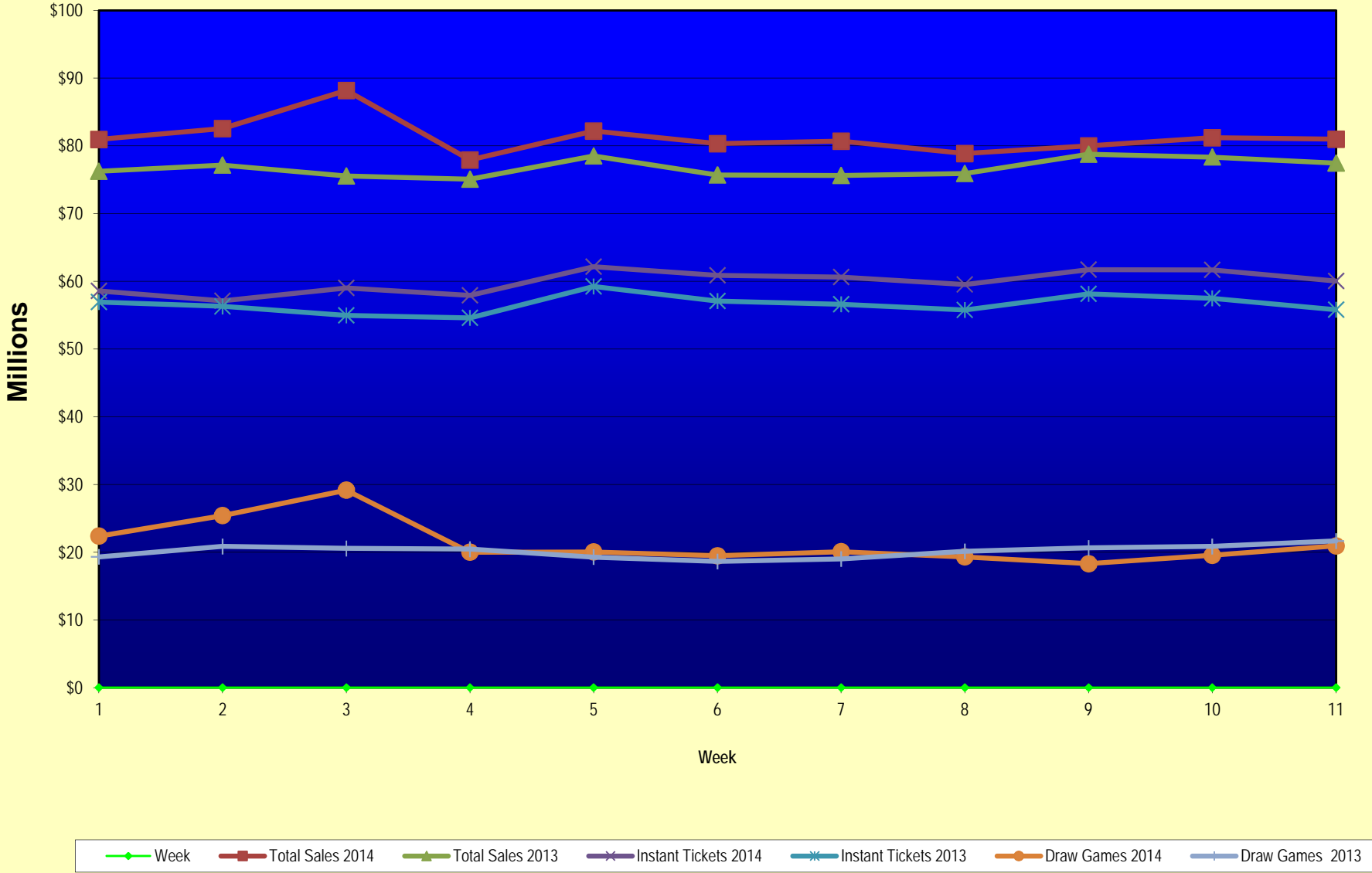
			INSTANT TICKETS				DRAW GAMES				TOTAL SALES			
FY 2014			FY 2014	FY 2013	Difference	% change - Cumulative Sales	FY 2014	FY 2013	Difference	% change - Cumulative Sales	FY 2014	FY 2013	Difference	% change - Cumulative Sales
Week	Week Ending													
0	9/1/2013 *		\$0	\$9,611,328	(\$9,611,328)	-100.0%	\$0	\$3,712,535	(\$3,712,535)	-100.0%	\$0	\$13,323,863	(\$13,323,863)	-100.0%
1	9/7/2013		\$58,587,757	\$56,941,761	\$1,645,996	2.9%	\$22,369,499	\$19,305,417	\$3,064,082	15.9%	\$80,957,256	\$76,247,178	\$4,710,078	6.2%
2	9/14/2013		\$57,135,931	\$56,302,875	\$833,056	1.5%	\$25,412,980	\$20,857,230	\$4,555,750	21.8%	\$82,548,911	\$77,160,105	\$5,388,806	7.0%
3	9/21/2013		\$59,018,194	\$54,974,438	\$4,043,756	7.4%	\$29,161,241	\$20,570,277	\$8,590,964	41.8%	\$88,179,435	\$75,544,715	\$12,634,720	16.7%
4	9/28/2013		\$57,927,984	\$54,606,674	\$3,321,310	6.1%	\$20,012,313	\$20,462,690	(\$450,378)	-2.2%	\$77,940,297	\$75,069,364	\$2,870,933	3.8%
5	10/5/2013		\$62,146,816	\$59,223,327	\$2,923,489	4.9%	\$20,043,557	\$19,279,973	\$763,584	4.0%	\$82,190,373	\$78,503,300	\$3,687,073	4.7%
6	10/12/2013		\$60,867,582	\$57,075,606	\$3,791,976	6.6%	\$19,480,962	\$18,638,467	\$842,496	4.5%	\$80,348,544	\$75,714,073	\$4,634,472	6.1%
7	10/19/2013		\$60,612,193	\$56,630,134	\$3,982,059	7.0%	\$20,079,610	\$18,998,943	\$1,080,668	5.7%	\$80,691,803	\$75,629,077	\$5,062,727	6.7%
8	10/26/2013		\$59,548,277	\$55,789,743	\$3,758,534	6.7%	\$19,319,928	\$20,130,190	(\$810,262)	-4.0%	\$78,868,205	\$75,919,933	\$2,948,273	3.9%
9	11/2/2013		\$61,710,236	\$58,142,777	\$3,567,459	6.1%	\$18,308,976	\$20,638,008	(\$2,329,032)	-11.3%	\$80,019,212	\$78,780,785	\$1,238,427	1.6%
10	11/9/2013		\$61,668,594	\$57,484,804	\$4,183,790	7.3%	\$19,555,070	\$20,862,872	(\$1,307,802)	-6.3%	\$81,223,664	\$78,347,676	\$2,875,988	3.7%
11	11/16/2013		\$60,057,025	\$55,805,228	\$4,251,797	7.6%	\$20,930,071	\$21,660,705	(\$730,634)	-3.4%	\$80,987,096	\$77,465,933	\$3,521,163	4.5%
12	11/23/2013			\$61,331,977				\$27,172,853				\$88,504,830		
13	11/30/2013			\$58,420,598				\$62,797,943				\$121,218,541		
14	12/7/2013			\$62,489,745				\$19,630,155				\$82,119,900		
15	12/14/2013			\$59,661,880				\$20,064,982				\$79,726,862		
16	12/21/2013			\$63,556,886				\$19,084,653				\$82,641,539		
17	12/28/2013			\$63,547,886				\$17,359,874				\$80,907,760		
18	1/4/2014			\$60,452,721				\$18,833,047				\$79,285,768		
19	1/11/2014			\$58,862,997				\$18,879,167				\$77,742,164		
20	1/18/2014			\$58,494,057				\$19,258,004				\$77,752,061		
21	1/25/2014			\$57,871,744				\$20,093,215				\$77,964,959		
22	2/1/2014			\$61,846,715				\$21,032,335				\$82,879,050		
23	2/8/2014			\$70,374,906				\$21,183,638				\$91,558,544		
24	2/15/2014			\$71,002,438				\$19,295,197				\$90,297,635		
25	2/22/2014			\$71,203,934				\$19,729,989				\$90,933,923		
26	3/1/2014			\$74,551,567				\$20,278,327				\$94,829,894		
27	3/8/2014			\$75,360,138				\$21,447,763				\$96,807,901		
28	3/15/2014			\$70,065,528				\$22,055,563				\$92,121,091		
29	3/22/2014			\$70,137,284				\$28,709,024				\$98,846,308		
30	3/29/2014			\$68,758,522				\$18,597,091				\$87,355,613		
31	4/5/2014			\$73,270,054				\$20,048,992				\$93,319,046		
32	4/12/2014			\$64,738,900				\$19,697,793				\$84,436,693		
33	4/19/2014			\$63,252,072				\$20,245,083				\$83,497,155		
34	4/26/2014			\$62,766,647				\$21,162,888				\$83,929,535		
35	5/3/2014			\$66,251,082				\$23,628,101				\$89,879,183		
36	5/10/2014			\$65,748,723				\$26,735,480				\$92,484,203		
37	5/17/2014			\$63,348,463				\$61,124,604				\$124,473,067		
38	5/24/2014			\$60,537,133				\$18,730,138				\$79,267,271		
39	5/31/2014			\$58,547,555				\$18,317,891				\$76,865,446		
40	6/7/2014			\$62,113,508				\$18,374,935				\$80,488,443		

Texas Lottery Commission  
Fiscal Year Over Year Change in Sales  
Unaudited  
FY 2014 Compared to FY 2013

Week	FY 2014 Week Ending	INSTANT TICKETS				DRAW GAMES				TOTAL SALES			
		FY 2014	FY 2013	Difference	% change - Cumulative Sales	FY 2014	FY 2013	Difference	% change - Cumulative Sales	FY 2014	FY 2013	Difference	% change - Cumulative Sales
41	6/14/2014		\$58,988,468				\$18,101,981				\$77,090,449		
42	6/21/2014		\$61,199,484				\$18,675,967				\$79,875,451		
43	6/28/2014		\$59,435,096				\$18,026,964				\$77,462,060		
44	7/5/2014		\$63,457,072				\$18,556,140				\$82,013,212		
45	7/12/2014		\$60,046,267				\$17,669,864				\$77,716,131		
46	7/19/2014		\$61,952,164				\$19,002,142				\$80,954,306		
47	7/26/2014		\$58,251,955				\$20,309,411				\$78,561,366		
48	8/2/2014		\$63,652,675				\$25,295,830				\$88,948,505		
49	8/9/2014		\$56,800,305				\$33,349,261				\$90,149,566		
50	8/16/2014		\$55,607,891				\$17,625,289				\$73,233,180		
51	8/23/2014		\$55,988,956				\$18,099,850				\$74,088,806		
52	8/30/2014		\$56,059,026				\$20,294,026				\$76,353,052		
Total thru Current Week		\$659,280,589	\$632,588,695	\$26,691,894	4.2%	\$234,674,204	\$225,117,303	\$9,556,901	4.2%	\$893,954,793	\$857,705,998	\$36,248,795	4.2%
Fiscal Year Total		\$659,280,589	\$3,222,593,714			\$234,674,204	\$1,153,692,742			\$893,954,793	\$4,376,286,456		

\* FY 13 includes 1 day

### Texas Lottery Commission Fiscal Year Over Year Change in Sales



Note: Week 1 is not a full week of sales as this report is prepared on a Fiscal Year basis.

Texas Lottery Commission  
**Instant Tickets by Price Point**  
Sales, Prize Expense, Sales Contribution and Payout Percentage With Year Over Year Changes  
Unaudited

Fiscal Year	Price Point	# of Active Games	FY Sales	% of Instant Ticket Sales	Year over Year Change in Sales	FY Prize Expense	Year over Year Change in Prize Expense	FY Sales Contribution	Year over Year Change in Contribution	Average Prize Payout %	Year over Year Change in Payout %
2013	\$1.00	24	37,585,219	5.9%		22,883,802		14,701,417		60.9%	0.4%
thru	\$2.00	26	79,888,766	12.6%		51,941,027		27,947,739		65.0%	-0.1%
11/17/2012	\$3.00	14	82,813,866	13.1%		54,314,813		28,499,053		65.6%	0.1%
	\$5.00	40	192,648,715	30.5%		130,777,363		61,871,352		67.9%	-0.2%
	\$7.00	2	11,598,839	1.8%		7,883,339		3,715,500		68.0%	0.0%
	\$10.00	11	106,346,980	16.8%		75,170,054		31,176,926		70.7%	-0.3%
	\$20.00	7	97,330,360	15.4%		72,851,816		24,478,544		74.9%	0.1%
	\$50.00	2	24,375,950	3.9%		18,926,743		5,449,207		77.6%	0.0%
<b>Total</b>		<b>126</b>	<b>\$632,588,695</b>			<b>\$434,748,958</b>		<b>\$197,839,737</b>		<b>68.7%</b>	<b>0.2%</b>
2014	\$1.00	21	38,675,504	5.9%		23,178,308		15,497,196		59.9%	-1.3%
thru	\$2.00	27	79,850,018	12.1%		51,853,111		27,996,907		64.9%	-0.1%
11/16/2013	\$3.00	14	71,771,112	10.9%		46,986,351		24,784,761		65.5%	-0.1%
	\$5.00	35	216,112,265	32.8%		146,802,841		69,309,424		67.9%	-0.1%
	\$7.00	0	0	0.0%		0		-		0.0%	0.0%
	\$10.00	11	122,458,090	18.6%		86,512,851		35,945,239		70.6%	-0.6%
	\$20.00	8	105,358,500	16.0%		78,896,876		26,461,624		74.9%	0.0%
	\$50.00	2	25,055,100	3.8%		19,451,508		5,603,592		77.6%	0.0%
<b>Total</b>		<b>118</b>	<b>\$659,280,589</b>			<b>\$453,681,845</b>		<b>\$205,598,744</b>		<b>68.8%</b>	<b>-0.2%</b>
Variance	\$1.00	-3	1,090,285		2.9%	294,506	1.3%	795,779	5.4%	-0.95%	
2014 to	\$2.00	1	-38,748		0.0%	-87,916	-0.2%	49,168	0.2%	-0.08%	
2013	\$3.00	0	-11,042,754		-13.3%	-7,328,462	-13.5%	-3,714,292	-13.0%	-0.12%	
	\$5.00	-5	23,463,550		12.2%	16,025,477	12.3%	7,438,073	12.0%	0.05%	
	\$7.00	-2	-11,598,839		-100.0%	-7,883,339	-100.0%	-3,715,500	-100.0%	-67.97%	
	\$10.00	0	16,111,110		15.1%	11,342,797	15.1%	4,768,313	15.3%	-0.04%	
	\$20.00	1	8,028,140		8.2%	6,045,060	8.3%	1,983,080	8.1%	0.03%	
	\$50.00	0	679,150		2.8%	524,765	2.8%	154,385	2.8%	-0.01%	
<b>Total</b>		<b>-8</b>	<b>\$26,691,894</b>		<b>4.2%</b>	<b>\$18,932,888</b>	<b>4.4%</b>	<b>\$7,759,007</b>	<b>3.9%</b>	<b>0.10%</b>	

Notes - Instant Ticket Variances

Texas Lottery Commission  
**Instant Tickets by Price Point**  
**Sales, Prize Expense, Sales Contribution and Payout Percentage With Year Over Year Changes**  
 Unaudited

			FY 2014		FY 2013	Difference
Sales	\$1 - \$7	1	\$406,408,899		\$404,535,405	\$1,873,494
Prize Exp.	\$1 - \$7	1	\$268,820,611		\$267,800,345	\$1,020,266
Sales Cont.	\$1 - \$7	1	\$137,588,288		\$136,735,060	\$853,228
Prize Exp. %	\$1 - \$7	1	66.1%		66.2%	-0.1%
			FY 2014		FY 2013	Difference
Sales	\$10 - \$50	2	\$252,871,690		\$228,053,290	\$24,818,400
Prize Exp.	\$10 - \$50	2	\$184,861,234		\$166,948,613	\$17,912,621
Sales Cont.	\$10 - \$50	1	\$68,010,456		\$61,104,677	\$6,905,779
Prize Exp. %	\$10 - \$50	2	73.1%		73.2%	-0.1%
			FY 2014		FY 2013	Difference
Sales	Instant		\$659,280,589		\$632,588,695	\$26,691,894
Prize Exp.	Instant		\$453,681,845		\$434,748,958	\$18,932,888
Sales Cont.	Instant		\$205,598,744		\$197,839,737	\$7,759,007
Prize Exp. %	Instant		68.8%		68.7%	0.1%

			FY 2014		FY 2013	Difference
Sales	\$1 - \$10		\$528,866,989		\$510,882,385	\$17,984,604
Prize Exp.	\$1 - \$10		\$355,333,462		\$342,970,399	\$12,363,063
Sales Cont.	\$1 - \$10		\$173,533,527		\$167,911,986	\$5,621,541
Prize Exp. %	\$1 - \$10		67.2%		67.1%	0.1%
			FY 2014		FY 2013	Difference
Sales	\$20 - \$50		\$130,413,600		\$121,706,310	\$8,707,290
Prize Exp.	\$20 - \$50		\$98,348,384		\$91,778,559	\$6,569,825
Sales Cont.	\$20 - \$50		\$32,065,216		\$29,927,751	\$2,137,465
Prize Exp. %	\$20 - \$50		75.4%		75.4%	0.0%
			FY 2014		FY 2013	Difference
Sales	Instant		\$659,280,589		\$632,588,695	\$26,691,894
Prize Exp.	Instant		\$453,681,845		\$434,748,958	\$18,932,888
Sales Cont.	Instant		\$205,598,744		\$197,839,737	\$7,759,007
Prize Exp. %	Instant		68.8%		68.7%	0.1%



Texas Lottery Commission  
**Weekly Sales Summary**  
**& Comparison to Previous Week**  
 Unaudited

	Week Ending 11/16/2013	% of Sales	Week Ending 11/09/2013	% of Sales	\$ change	% change
	<u>THIS WEEK</u>		<u>LAST WEEK</u>			
Total Sales	<u>\$80,987,096</u>		<u>\$81,223,664</u>		<u>-\$236,568</u>	-0.29%
Instant Tickets	<u>\$60,057,025</u>	74.2%	<u>\$61,668,594</u>	75.9%	<u>-\$1,611,569</u>	-2.61%
Lotto	\$2,449,602	3.0%	\$2,396,719	3.0%	\$52,883	2.21%
Lotto Extra	\$316,977	0.4%	\$311,322	0.4%	\$5,655	1.82%
Pick 3	\$4,845,025	6.0%	\$4,959,973	6.1%	-\$114,948	-2.32%
Pick 3 Sum It Up	\$95,215	0.1%	\$98,589	0.1%	-\$3,374	-3.42%
Cash Five	\$1,003,854	1.2%	\$1,019,624	1.3%	-\$15,770	-1.55%
Texas Two Step	\$1,690,863	2.1%	\$1,380,347	1.7%	\$310,516	22.50%
Mega Millions	\$2,988,792	3.7%	\$2,599,262	3.2%	\$389,530	14.99%
Megaplier	\$652,956	0.8%	\$596,031	0.7%	\$56,925	9.55%
Daily 4	\$1,660,309	2.1%	\$1,673,137	2.1%	-\$12,828	-0.77%
Daily 4 Sum It Up	\$102,225	0.1%	\$105,122	0.1%	-\$2,898	-2.76%
Powerball	\$3,786,446	4.7%	\$3,109,692	3.8%	\$676,754	21.76%
Power Play	\$477,532	0.6%	\$407,994	0.5%	\$69,538	17.04%
All or Nothing	\$860,276	1.1%	\$897,258	1.1%	-\$36,982	-4.12%
Total Draw Game Sales	<u>\$20,930,071</u>		<u>\$19,555,070</u>		<u>\$1,375,002</u>	7.03%

\* Totals may not sum due to rounding.

Texas Lottery Commission  
Weekly Sales Summary  
Unaudited

INSTANT TICKETS  
TOP TEN SELLING GAMES

For the Week Ending: 11/16/13

Rank	Price Point	Game	Sales (Millions)
1	\$ 10	GIFTS GALORE	\$ 3.808
2	\$ 5	CASH MACHINE	\$ 3.209
3	\$ 10	SUPER WEEKLY GRAND	\$ 3.009
4	\$ 20	HOLIDAY MILLIONS	\$ 3.001
5	\$ 5	TRIM THE TREE	\$ 2.509
6	\$ 5	BONUS WEEKLY GRAND	\$ 2.277
7	\$ 20	\$1,000,000 JACKPOT	\$ 2.027
8	\$ 10	10X MEGA MONEY	\$ 1.940
9	\$ 20	20X CASH	\$ 1.886
10	\$ 5	\$75,000 CASHWORD-O-RAMA	\$ 1.845

Texas Lottery Commission  
Prize Payout Tracking Report  
Unaudited

Through the Week Ending 11/16/13

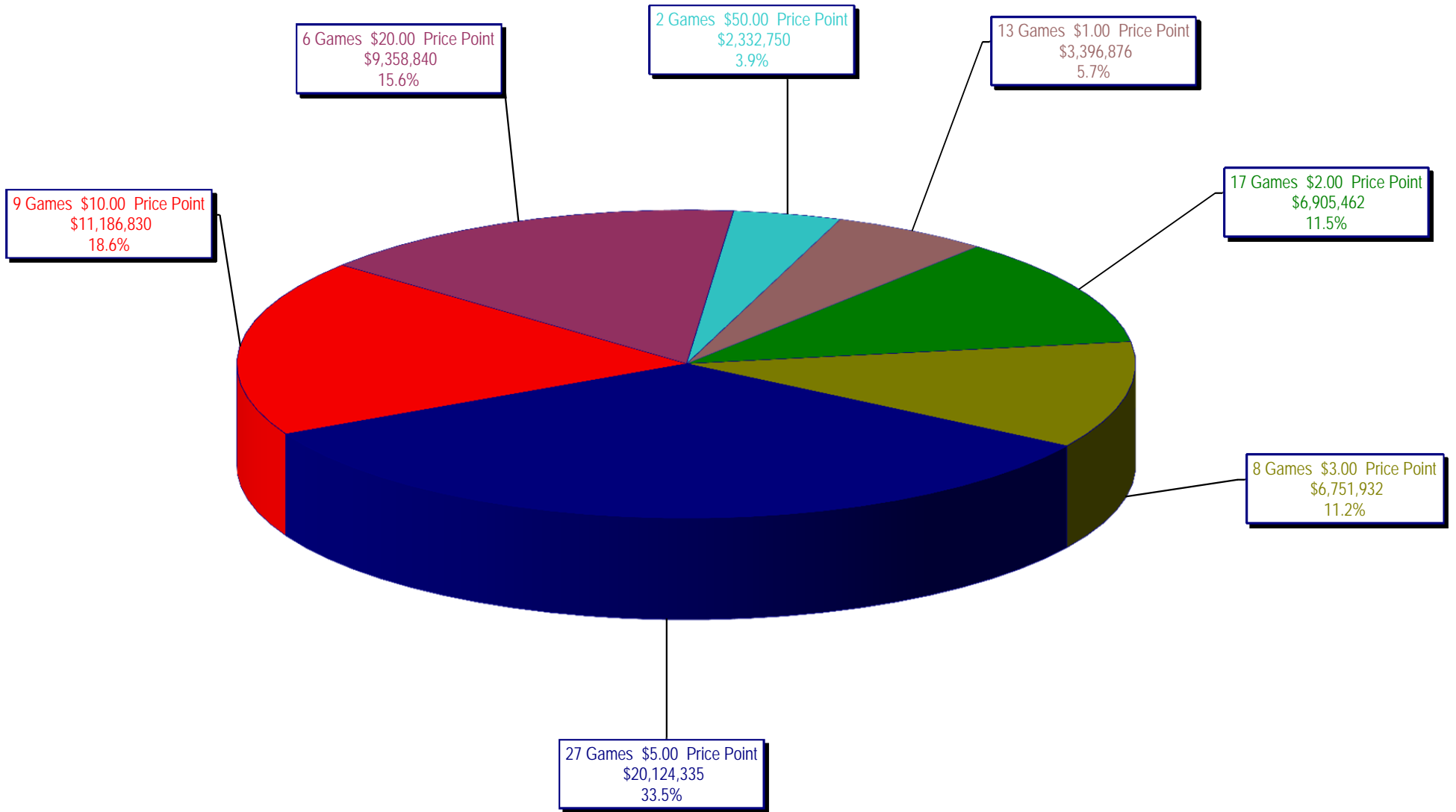
Draw Game Sales

		FY Sales Through Week Ending 11/16/2013		FY Prize Expense Through Week Ending 11/16/2013	Actual* Prize Payout	Base Payout (Prize Pool)
Lotto	\$	28,617,256	\$	15,477,916	54.09%	54.00%
Lotto Extra		3,600,247		1,966,256	54.61%	53.70%
Pick 3		53,239,419		27,048,420	50.81%	50.00%
Pick 3 Sum It Up		1,056,935		482,601	45.66%	50.00%
Cash Five		11,121,620		5,560,859	50.00%	50.00%
Texas Two Step		12,215,263		6,190,942	50.68%	50.00%
Mega Millions		28,914,076		14,416,374	49.86%	50.00%**
Megaplier		6,394,885		3,039,945	47.54%	N/A
Daily 4		17,450,825		9,974,275	57.16%	50.00%
Daily 4 Sum It Up		1,081,458		967,122	89.43%	50.00%
Powerball		54,565,255		26,315,511	48.23%	50.00%**
Power Play		6,191,618		2,232,417	36.06%	N/A
All or Nothing		10,225,348		5,396,308	52.77%	55.98%
<b>Totals</b>	\$	<b>234,674,204</b>	\$	<b>119,068,945</b>	<b>50.74%</b>	

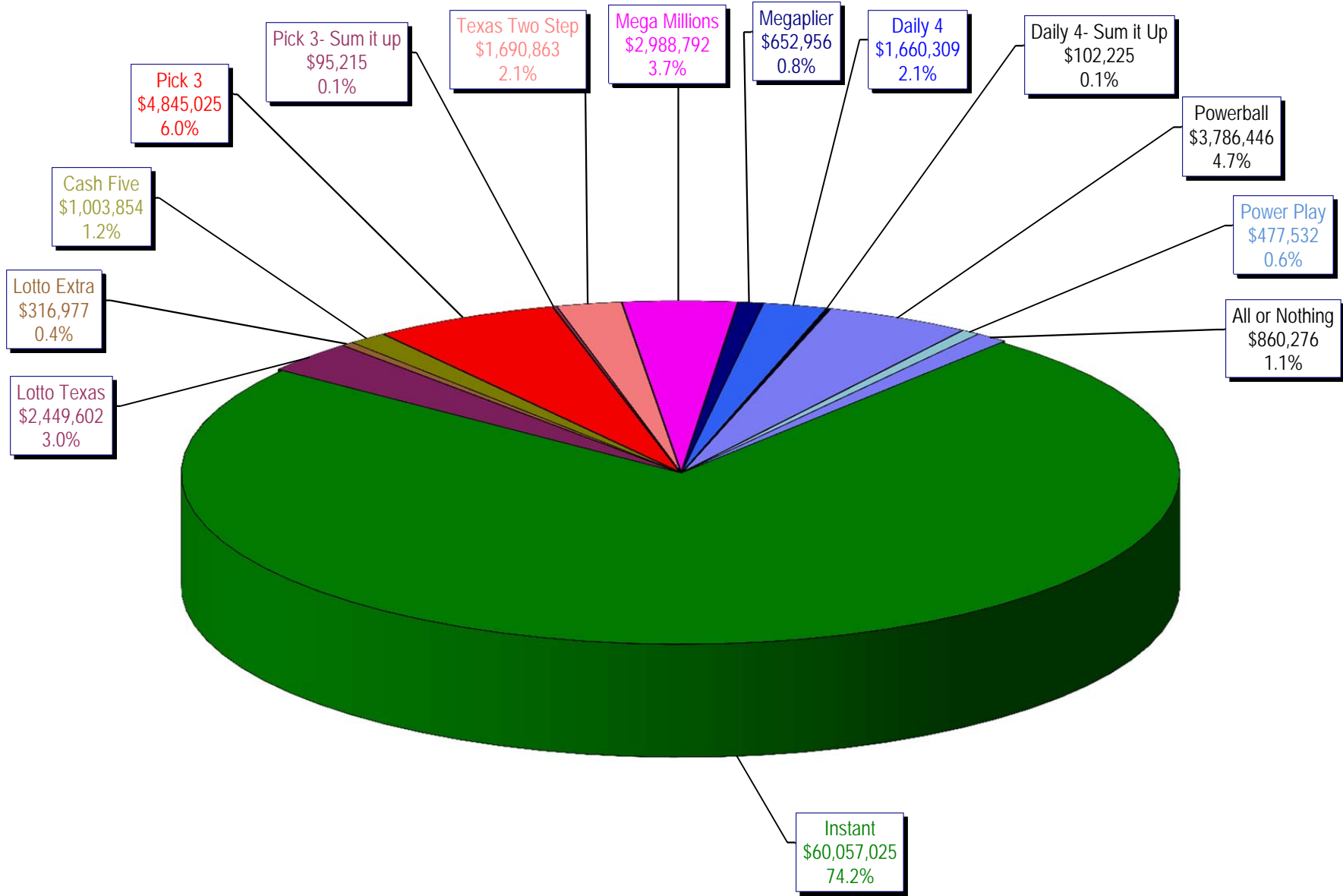
\* Before Unclaimed Prizes

\*\* Estimated; depends on # of guaranteed prizes won in Texas

Texas Lottery Commission  
Instant Ticket Sales  
For the Week Ending 11/16/13  
(Unaudited)



**Texas Lottery Commission  
All Game Sales  
For the Week Ending 11/16/13  
(Unaudited)**



Texas Lottery Commission - Weekly Sales Summary for FY 2014 (Unaudited)

Week Ended	Instant Games	New Games & Dates	Lotto Texas	Jackpot		Lotto Extra	Pick 3	Pick 3 Sum It Up	Cash Five	Texas Two Step	Jackpot		Mega Millions	Jackpot		Megaplier	Daily 4	Daily 4 Sum It Up	Powerball	Jackpot		Power Play	All or Nothing	Total	Per Cap.
				W	S						M	TH		T	F					W	S				
9/7/2013	58,587,757	0	2,677,829	8	9	329,933	4,945,500	89,456	1,036,149	1,417,992	600	775	2,409,195	85	95	540,148	1,453,721	84,220	5,730,736	169	203	650,070	1,004,550	80,957,256	3.11
9/14/2013	57,135,931	1554 (\$1.N); 1555 (\$2.N); 1556 (\$5.N); 1557 (\$10.N) - 09/09/13	2,667,851	9.75	10.75	331,113	4,795,787	98,347	1,011,617	1,209,874	1	200	2,942,905	106	119	623,938	1,431,261	87,188	8,313,548	245	317	861,842	1,037,710	82,548,911	3.17
9/21/2013	59,018,194	0	2,793,973	11.50	12.50	346,650	4,806,820	94,670	1,008,752	908,904	225	300	3,395,333	130	145	704,431	1,513,941	92,441	11,449,786	400	40	1,072,426	973,114	88,179,435	3.38
9/28/2013	57,927,984	1558 (\$2.N); 1523 (\$5.N) - 09/23/13	2,653,111	13.25	14	329,426	4,679,375	95,344	994,775	852,100	200	225	3,688,920	160	173	744,933	1,523,950	94,444	3,041,612	50	60	392,576	921,748	77,940,297	2.99
10/5/2013	62,146,816	0	2,758,867	15	15.75	341,320	5,022,201	105,398	1,038,159	842,921	200	200	2,878,147	189	12	615,856	1,694,849	108,583	3,263,494	70	86	416,767	956,996	82,190,373	3.15
10/12/2013	60,867,582	1560 (\$1.N); 1561 (\$5.N); 1562 (\$20.N) - 10/7/13	2,820,574	16.5	17.75	348,512	4,834,261	97,324	1,011,724	926,156	225	300	1,819,995	14	22	440,456	1,607,225	100,756	4,066,595	108	133	489,491	917,894	80,348,544	3.08
10/19/2013	60,612,193	0	2,709,127	18.5	19.5	339,742	4,805,913	93,251	998,546	1,120,862	425	575	1,852,326	29	37	442,957	1,595,838	97,700	4,606,577	156	186	533,660	883,112	80,691,803	3.10
10/26/2013	59,548,277	1563 (\$2.N); 1564 (\$5.N); 1571 (\$10.N) - 10/21/13	2,318,924	5	5.25	297,319	4,702,074	92,890	991,912	830,330	200	225	2,138,960	55	65	514,665	1,635,640	102,731	4,306,600	216	40	503,870	884,014	78,868,205	3.03
11/2/2013	61,710,236	0	2,370,679	5.5	5.75	307,933	4,842,493	96,454	1,006,508	1,034,914	300	425	2,200,241	75	87	518,514	1,660,955	106,051	2,890,169	50	60	385,390	888,676	80,019,212	3.07
11/9/2013	61,668,594	1572 (\$1.N); 1565 (\$2.N); 1524 (\$3.N); 1568 (\$5.N) - 11/4/13	2,396,719	6	6.25	311,322	4,959,973	98,589	1,019,624	1,380,347	550	750	2,599,262	99	115	596,031	1,673,137	105,122	3,109,692	70	87	407,994	897,258	81,223,664	3.12
11/16/2013	60,057,025	0	2,449,602	5	5.25	316,977	4,845,025	95,215	1,003,854	1,690,863	925	1,150	2,988,792	132	149	652,956	1,660,309	102,225	3,786,446	110	130	477,532	860,276	80,987,096	3.11
weekly change	-2.6%		2.2%				-2.3%	-3.4%	-1.5%	22.5%			15.0%			9.6%	-0.8%	-2.8%			21.8%	17.0%	-4.1%		-0.3%
	<b>SALES</b>		<b>SALES</b>			<b>SALES</b>	<b>SALES</b>	<b>SALES</b>	<b>SALES</b>	<b>SALES</b>	<b>SALES</b>	<b>SALES</b>	<b>SALES</b>	<b>SALES</b>	<b>SALES</b>	<b>SALES</b>	<b>SALES</b>	<b>SALES</b>	<b>SALES</b>	<b>SALES</b>	<b>SALES</b>	<b>SALES</b>	<b>SALES</b>	<b>SALES</b>	<b>% of Sales</b>
Calendar Year to date	2,863,279,852		121,893,998			10,060,152	233,772,969	4,456,963	48,266,356	52,628,373			105,436,268			23,871,851	69,194,987	4,341,945	249,878,425			27,273,687	42,405,921	3,856,761,746	100.0%
Fiscal Year to date 2014	659,280,589		28,617,256			3,600,247	53,239,419	1,056,935	11,121,620	12,215,263			28,914,076			6,394,885	17,450,825	1,081,458	54,565,255			6,191,618	10,225,348	893,954,793	100.0%