



*WEEKLY SALES SUMMARY*

Unaudited

[Week Ending: 11/17/2012](#)

Texas Lottery Commission  
Fiscal Year to Date Sales Comparison  
Unaudited

Through the week ending 11/17/2012 (12 weeks)

Sales by Game	FY 2011 *	FY 2012 **	FY 2013	\$ Change		% Change	
				FY 2013 to FY 2011	FY 2013 to FY 2012	FY 2013 to FY 2011	FY 2013 to FY 2012
Instants	\$ 586,172,518	\$ 604,018,449	\$ 632,588,695	\$ 46,416,177	\$ 28,570,246	7.9%	4.7%
Lotto Texas	37,974,173	38,437,281	34,828,825	-3,145,348	-3,608,456	-8.3%	-9.4%
Pick 3	60,188,516	57,519,653	56,599,690	-3,588,827	-919,964	-6.0%	-1.6%
Pick 3 Sum It Up	1,225,323	1,167,141	1,066,946	-158,377	-100,195	-12.9%	-8.6%
Cash Five	14,201,782	14,053,834	12,229,973	-1,971,809	-1,823,861	-13.9%	-13.0%
Texas Two Step	9,893,690	14,039,555	11,321,993	1,428,303	-2,717,562	14.4%	-19.4%
Mega Millions	28,952,996	30,192,011	23,281,038	-5,671,958	-6,910,973	-19.6%	-22.9%
Megaplier	6,529,644	6,901,888	5,383,093	-1,146,551	-1,518,795	-17.6%	-22.0%
Daily 4	12,416,817	13,386,345	14,878,027	2,461,211	1,491,683	19.8%	11.1%
Daily 4 Sum It Up	975,363	1,006,831	1,008,527	33,164	1,696	3.4%	0.2%
Powerball	19,356,641	30,031,315	38,382,852	19,026,211	8,351,537	98.3%	27.8%
Power Play	4,620,665	6,407,003	4,714,037	93,372	-1,692,966	2.0%	-26.4%
All or Nothing	-	-	21,422,303	21,422,303	21,422,303	-	-
<b>Total</b>	<b>\$ 782,508,127</b>	<b>\$ 817,161,306</b>	<b>\$ 857,705,998</b>	<b>\$ 75,197,871</b>	<b>\$ 40,544,693</b>	<b>9.6%</b>	<b>5.0%</b>

\* 3 extra days

\*\* 2 extra days

Texas Lottery Commission  
Fiscal Year to Date Cumulative Average Sales Comparison  
Unaudited

Through the week ending 11/17/2012 (12 weeks)

Sales by Game	FY 2011	FY 2012	FY 2013
Instant	\$ 7,236,698	\$ 7,550,231	\$ 8,110,111
Lotto Texas	468,817	480,466	446,523
Pick 3	743,068	718,996	725,637
Pick 3 Sum It Up	15,127	14,589	13,679
Cash Five	175,331	175,673	156,795
Texas Two Step	122,144	175,494	145,154
Mega Millions	357,444	377,400	298,475
Megaplier	80,613	86,274	69,014
Daily 4	153,294	167,329	190,744
Daily 4 Sum It Up	12,042	12,585	12,930
Powerball	238,971	375,391	492,088
Power Play	57,045	80,088	60,436
All or Nothing	-	-	306,033 *
<b>Total</b>	<b>\$ <u>9,660,594</u></b>	<b>\$ <u>10,214,516</u></b>	<b>\$ <u>11,027,619</u></b>
	thru 11/20/2010 81 days	thru 11/19/2011 80 days	thru 11/17/2012 78 days * 70 days

Texas Lottery Commission  
Fiscal Year Over Year Change in Sales  
Unaudited  
FY 2013 Compared to FY 2012

Week	FY 2013 Week Ending	INSTANT TICKETS				DRAW GAMES				TOTAL SALES			
		FY 2013	FY 2012	Difference	% change - Cumulative Sales	FY 2013	FY 2012	Difference	% change - Cumulative Sales	FY 2013	FY 2012	Difference	% change - Cumulative Sales
1	9/1/2012**	\$9,611,328	\$25,147,181	(\$15,535,853)	-61.8%	\$3,712,535	\$9,704,561	(\$5,992,026)	-61.7%	\$13,323,863	\$34,851,742	(\$21,527,879)	-61.8%
2	9/8/2012	\$56,941,761	\$50,591,068	\$6,350,693	12.6%	\$19,305,417	\$17,681,853	\$1,623,564	9.2%	\$76,247,178	\$68,272,921	\$7,974,257	11.7%
3	9/15/2012	\$56,302,875	\$49,835,063	\$6,467,812	13.0%	\$20,857,230	\$16,842,326	\$4,014,904	23.8%	\$77,160,105	\$66,677,389	\$10,482,716	15.7%
4	9/22/2012	\$54,974,438	\$49,777,138	\$5,197,300	10.4%	\$20,570,277	\$17,504,800	\$3,065,477	17.5%	\$75,544,715	\$67,281,938	\$8,262,777	12.3%
5	9/29/2012	\$54,606,674	\$51,040,274	\$3,566,400	7.0%	\$20,462,690	\$18,653,100	\$1,809,591	9.7%	\$75,069,364	\$69,693,374	\$5,375,991	7.7%
6	10/6/2012	\$59,223,327	\$53,715,157	\$5,508,170	10.3%	\$19,279,973	\$17,225,680	\$2,054,293	11.9%	\$78,503,300	\$70,940,837	\$7,562,463	10.7%
7	10/13/2012	\$57,075,606	\$51,942,121	\$5,133,485	9.9%	\$18,638,467	\$17,854,980	\$783,487	4.4%	\$75,714,073	\$69,797,101	\$5,916,972	8.5%
8	10/20/2012	\$56,630,134	\$52,837,769	\$3,792,365	7.2%	\$18,998,943	\$19,558,519	(\$559,577)	-2.9%	\$75,629,077	\$72,396,288	\$3,232,789	4.5%
9	10/27/2012	\$55,789,743	\$52,206,644	\$3,583,099	6.9%	\$20,130,190	\$21,504,565	(\$1,374,376)	-6.4%	\$75,919,933	\$73,711,209	\$2,208,724	3.0%
10	11/3/2012	\$58,142,777	\$56,265,310	\$1,877,467	3.3%	\$20,638,008	\$20,870,086	(\$232,079)	-1.1%	\$78,780,785	\$77,135,396	\$1,645,389	2.1%
11	11/10/2012	\$57,484,804	\$55,682,645	\$1,802,159	3.2%	\$20,862,872	\$17,862,404	\$3,000,468	16.8%	\$78,347,676	\$73,545,049	\$4,802,627	6.5%
12	11/17/2012	\$55,805,228	\$54,978,079	\$827,149	1.5%	\$21,660,705	\$17,879,985	\$3,780,721	21.1%	\$77,465,933	\$72,858,064	\$4,607,870	6.3%
13	11/24/2012		\$53,942,448				\$16,877,145				\$70,819,593		
14	12/1/2012		\$57,153,469				\$18,298,636				\$75,452,105		
15	12/8/2012		\$55,318,284				\$19,033,326				\$74,351,610		
16	12/15/2012		\$58,612,629				\$20,045,279				\$78,657,908		
17	12/22/2012		\$60,628,256				\$22,572,986				\$83,201,242		
18	12/29/2012		\$63,065,007				\$19,948,521				\$83,013,528		
19	1/5/2013		\$60,479,896				\$17,331,888				\$77,811,784		
20	1/12/2013		\$57,689,526				\$17,568,732				\$75,258,258		
21	1/19/2013		\$58,704,854				\$19,886,540				\$78,591,394		
22	1/26/2013		\$57,611,325				\$20,641,697				\$78,253,022		
23	2/2/2013		\$65,553,366				\$23,689,855				\$89,243,221		
24	2/9/2013		\$75,070,485				\$28,361,583				\$103,432,068		
25	2/16/2013		\$66,679,947				\$19,588,615				\$86,268,562		
26	2/23/2013		\$64,868,899				\$19,965,388				\$84,834,287		
27	3/2/2013		\$67,135,065				\$20,947,181				\$88,082,246		
28	3/9/2013		\$68,299,006				\$22,152,639				\$90,451,645		
29	3/16/2013		\$65,013,692				\$23,351,718				\$88,365,410		
30	3/23/2013		\$64,035,255				\$27,416,609				\$91,451,864		
31	3/30/2013		\$65,135,991				\$84,628,987				\$149,764,978		
32	4/6/2013		\$66,860,957				\$19,899,400				\$86,760,357		
33	4/13/2013		\$64,028,898				\$20,220,141				\$84,249,039		
34	4/20/2013		\$63,623,892				\$20,974,282				\$84,598,174		
35	4/27/2013		\$61,743,623				\$20,267,388				\$82,011,011		
36	5/4/2013		\$64,851,962				\$20,642,982				\$85,494,944		
37	5/11/2013		\$65,472,556				\$19,140,768				\$84,613,324		
38	5/18/2013		\$60,572,658				\$18,342,814				\$78,915,472		
39	5/25/2013		\$58,959,028				\$18,618,060				\$77,577,088		
40	6/1/2013		\$57,409,086				\$19,014,645				\$76,423,731		
41	6/8/2013		\$59,845,545				\$20,527,958				\$80,373,503		
42	6/15/2013		\$57,021,498				\$19,386,186				\$76,407,684		

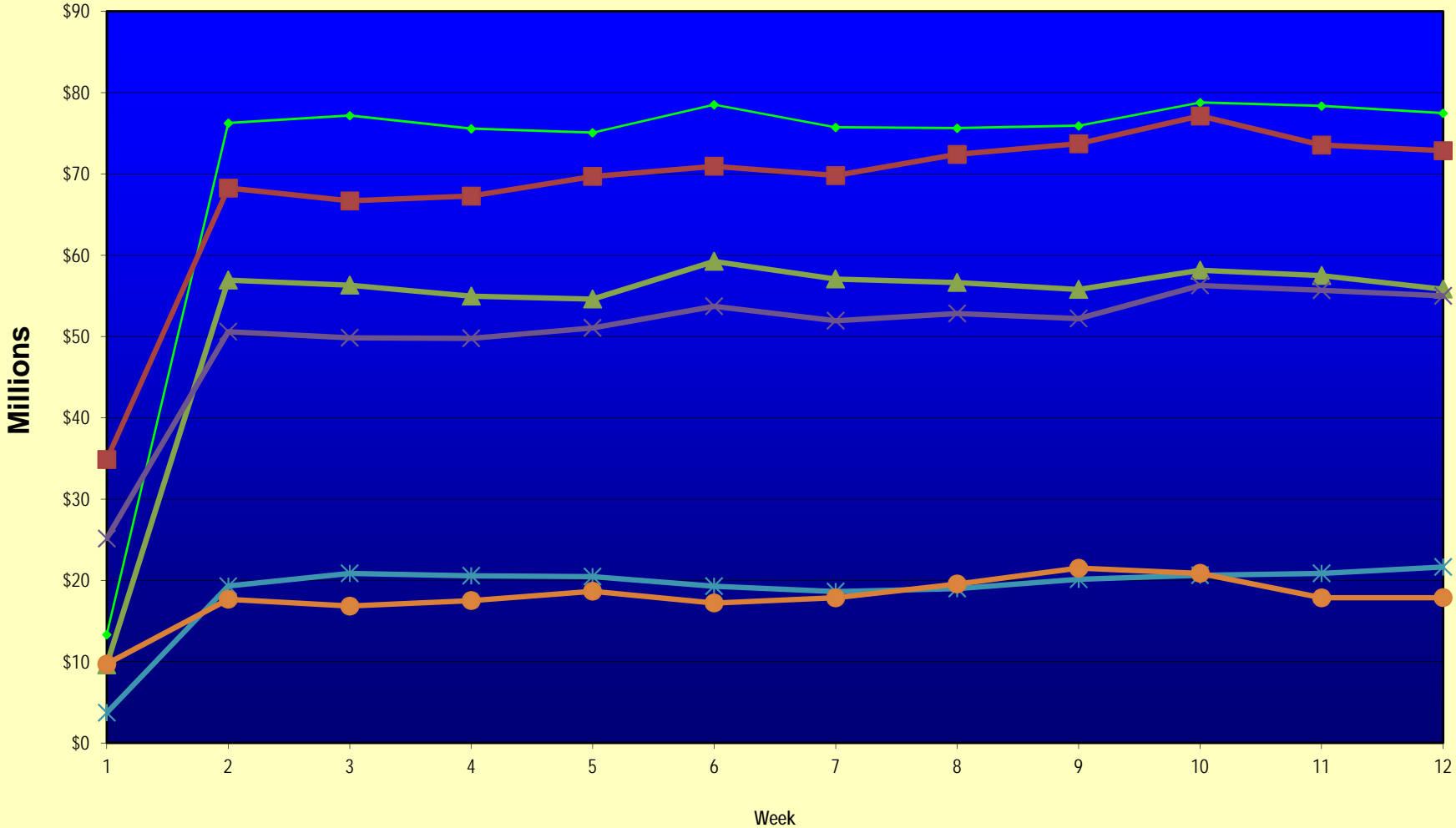
Note: Week 1 is not a full week of sales as this report is prepared on a Fiscal Year basis.

Texas Lottery Commission  
Fiscal Year Over Year Change in Sales  
Unaudited  
FY 2013 Compared to FY 2012

Week	FY 2013 Week Ending	INSTANT TICKETS				DRAW GAMES				TOTAL SALES			
		FY 2013	FY 2012	Difference	% change - Cumulative Sales	FY 2013	FY 2012	Difference	% change - Cumulative Sales	FY 2013	FY 2012	Difference	% change - Cumulative Sales
43	6/22/2013		\$57,892,076				\$17,594,154				\$75,486,230		
44	6/29/2013		\$57,497,435				\$18,153,658				\$75,651,093		
45	7/6/2013		\$60,345,000				\$19,059,152				\$79,404,152		
46	7/13/2013		\$57,683,321				\$18,751,043				\$76,434,364		
47	7/20/2013		\$57,083,343				\$18,769,201				\$75,852,544		
48	7/27/2013		\$54,006,781				\$18,934,103				\$72,940,884		
49	8/3/2013		\$56,557,409				\$20,206,705				\$76,764,114		
50	8/10/2013		\$57,799,452				\$22,832,120				\$80,631,572		
51	8/17/2013		\$54,845,724				\$25,435,624				\$80,281,348		
52	8/24/2013		\$55,661,277				\$17,524,474				\$73,185,751		
	8/31/2013		\$47,363,984				\$14,929,528				\$62,293,512		
Total thru Current Week		\$632,588,695	\$604,018,449	\$28,570,246	4.7%	\$225,117,303	\$213,142,857	\$11,974,447	5.6%	\$857,705,998	\$817,161,306	\$40,544,693	5.0%
Fiscal Year Total		\$632,588,695	\$3,086,141,354			\$225,117,303	\$1,104,674,559			\$857,705,998	\$4,190,815,913		

\*\* FY 2012 includes 3 days; FY 2013 includes 1 day.

### Texas Lottery Commission Fiscal Year Over Year Change in Sales



Note: Week 1 is not a full week of sales as this report is prepared on a Fiscal Year basis.

Texas Lottery Commission  
**Instant Tickets by Price Point**  
Sales, Prize Expense, Sales Contribution and Payout Percentage With Year Over Year Changes  
Unaudited

Fiscal Year	Price Point	# of Active Games	FY Sales	% of Instant Ticket Sales	Year over Year Change in Sales	FY Prize Expense	Year over Year Change in Prize Expense	FY Sales Contribution	Year over Year Change in Contribution	Average Prize Payout %	Year over Year Change in Payout %
2012	\$1.00	24	43,075,833	7.1%		26,307,557		16,768,276		61.1%	0.5%
thru	\$2.00	25	84,002,172	13.9%		54,632,990		29,369,182		65.0%	-0.8%
11/19/2011	\$3.00	14	74,934,762	12.4%		49,177,368		25,757,394		65.6%	0.1%
	\$5.00	30	185,546,800	30.7%		126,157,055		59,389,745		68.0%	0.1%
	\$7.00	4	15,388,492	2.5%		10,464,028		4,924,464		68.0%	0.0%
	\$10.00	13	99,568,190	16.5%		70,175,820		29,392,370		70.5%	-0.8%
	\$20.00	5	84,595,800	14.0%		63,093,746		21,502,054		74.6%	-0.1%
	\$50.00	1	16,906,400	2.8%		13,131,583		3,774,817		77.7%	0.1%
<b>Total</b>		<b>116</b>	<b>\$604,018,449</b>			<b>\$413,140,146</b>		<b>\$190,878,303</b>		<b>68.4%</b>	<b>-0.1%</b>
2013	\$1.00	24	37,585,219	5.9%		22,883,802		14,701,417		60.9%	0.4%
thru	\$2.00	26	79,888,766	12.6%		51,941,027		27,947,739		65.0%	-0.1%
11/17/2012	\$3.00	14	82,813,866	13.1%		54,314,813		28,499,053		65.6%	0.1%
	\$5.00	40	192,648,715	30.5%		130,777,363		61,871,352		67.9%	-0.2%
	\$7.00	2	11,598,839	1.8%		7,883,339		3,715,500		68.0%	0.0%
	\$10.00	11	106,346,980	16.8%		75,170,054		31,176,926		70.7%	-0.3%
	\$20.00	7	97,330,360	15.4%		72,851,816		24,478,544		74.9%	0.1%
	\$50.00	2	24,375,950	3.9%		18,926,743		5,449,207		77.6%	0.0%
<b>Total</b>		<b>126</b>	<b>\$632,588,695</b>			<b>\$434,748,958</b>		<b>\$197,839,737</b>		<b>68.7%</b>	<b>0.2%</b>
Variance	\$1.00	0	-5,490,614		-12.7%	-3,423,755	-13.0%	-2,066,859	-12.3%	-0.19%	
2013 to	\$2.00	1	-4,113,406		-4.9%	-2,691,963	-4.9%	-1,421,443	-4.8%	-0.02%	
2012	\$3.00	0	7,879,104		10.5%	5,137,446	10.4%	2,741,658	10.6%	-0.04%	
	\$5.00	10	7,101,915		3.8%	4,620,309	3.7%	2,481,606	4.2%	-0.11%	
	\$7.00	-2	-3,789,653		-24.6%	-2,580,688	-24.7%	-1,208,965	-24.6%	-0.03%	
	\$10.00	-2	6,778,790		6.8%	4,994,234	7.1%	1,784,556	6.1%	0.20%	
	\$20.00	2	12,734,560		15.1%	9,758,070	15.5%	2,976,490	13.8%	0.27%	
	\$50.00	1	7,469,550		44.2%	5,795,161	44.1%	1,674,390	44.4%	-0.03%	
<b>Total</b>		<b>10</b>	<b>\$28,570,246</b>		<b>4.7%</b>	<b>\$21,608,812</b>	<b>5.2%</b>	<b>\$6,961,434</b>	<b>3.6%</b>	<b>0.33%</b>	

Notes - Instant Ticket Variances

Texas Lottery Commission  
**Instant Tickets by Price Point**  
**Sales, Prize Expense, Sales Contribution and Payout Percentage With Year Over Year Changes**  
 Unaudited

			FY 2013		FY 2012	Difference
Sales	\$1 - \$7		\$404,535,405		\$402,948,059	\$1,587,346
Prize Exp.	\$1 - \$7		\$267,800,345		\$266,738,997	\$1,061,348
Sales Cont.	\$1 - \$7		\$136,735,060		\$136,209,062	\$525,998
Prize Exp. %	\$1 - \$7		66.2%		66.2%	0.0%
			FY 2013		FY 2012	Difference
Sales	\$10 - \$50		\$228,053,290		\$201,070,390	\$26,982,900
Prize Exp.	\$10 - \$50		\$166,948,613		\$146,401,149	\$20,547,464
Sales Cont.	\$10 - \$50		\$61,104,677		\$54,669,241	\$6,435,436
Prize Exp. %	\$10 - \$50		73.2%		72.8%	0.4%
			FY 2013		FY 2012	Difference
Sales	Instant		\$632,588,695		\$604,018,449	\$28,570,246
Prize Exp.	Instant		\$434,748,958		\$413,140,146	\$21,608,812
Sales Cont.	Instant		\$197,839,737		\$190,878,303	\$6,961,434
Prize Exp. %	Instant		68.7%		68.4%	0.3%

			FY 2013		FY 2012	Difference
Sales	\$1 - \$10		\$510,882,385		\$502,516,249	\$8,366,136
Prize Exp.	\$1 - \$10		\$342,970,399		\$336,914,817	\$6,055,582
Sales Cont.	\$1 - \$10		\$167,911,986		\$165,601,432	\$2,310,554
Prize Exp. %	\$1 - \$10		67.1%		67.0%	0.1%
			FY 2013		FY 2012	Difference
Sales	\$20 - \$50		\$121,706,310		\$101,502,200	\$20,204,110
Prize Exp.	\$20 - \$50		\$91,778,559		\$76,225,329	\$15,553,230
Sales Cont.	\$20 - \$50		\$29,927,751		\$25,276,871	\$4,650,880
Prize Exp. %	\$20 - \$50		75.4%		75.1%	0.3%
			FY 2013		FY 2012	Difference
Sales	Instant		\$632,588,695		\$604,018,449	\$28,570,246
Prize Exp.	Instant		\$434,748,958		\$413,140,146	\$21,608,812
Sales Cont.	Instant		\$197,839,737		\$190,878,303	\$6,961,434
Prize Exp. %	Instant		68.7%		68.4%	0.3%



Texas Lottery Commission  
 Weekly Sales Summary  
 & Comparison to Previous Week  
 Unaudited

	Week Ending 11/17/2012		Week Ending 11/10/2012			
	<u>THIS WEEK</u>	% of Sales	<u>LAST WEEK</u>	% of Sales	<u>\$ change</u>	<u>% change</u>
Total Sales	<u>\$77,465,933</u>		<u>\$78,347,676</u>		<u>-\$881,743</u>	-1.13%
Instant Tickets	<u>\$55,805,228</u>	72.0%	<u>\$57,484,804</u>	73.4%	<u>-\$1,679,576</u>	-2.92%
Lotto	\$2,599,190	3.4%	\$3,061,999	3.9%	-\$462,809	-15.11%
Pick 3	\$5,248,059	6.8%	\$5,468,924	7.0%	-\$220,865	-4.04%
Pick 3 Sum It Up	\$91,989	0.1%	\$100,767	0.1%	-\$8,778	-8.71%
Cash Five	\$1,059,723	1.4%	\$1,083,928	1.4%	-\$24,205	-2.23%
Texas Two Step	\$920,319	1.2%	\$837,666	1.1%	\$82,653	9.87%
Mega Millions	\$1,841,571	2.4%	\$1,783,099	2.3%	\$58,472	3.28%
Megaplier	\$440,783	0.6%	\$430,343	0.5%	\$10,440	2.43%
Daily 4	\$1,345,121	1.7%	\$1,402,194	1.8%	-\$57,073	-4.07%
Daily 4 Sum It Up	\$88,391	0.1%	\$94,451	0.1%	-\$6,061	-6.42%
Powerball	\$5,638,425	7.3%	\$4,246,246	5.4%	\$1,392,179	32.79%
Power Play	\$615,323	0.8%	\$491,538	0.6%	\$123,785	25.18%
All or Nothing	<u>\$1,771,812</u>	2.3%	<u>\$1,861,718</u>	2.4%	<u>-\$89,906</u>	-4.83%
Total Draw Game Sales	<u>\$21,660,705</u>		<u>\$20,862,872</u>		<u>\$797,834</u>	3.82%

Totals may not sum due to rounding.

Texas Lottery Commission  
Weekly Sales Summary  
Unaudited

INSTANT TICKETS  
TOP TEN SELLING GAMES

For the Week Ending: 11/17/12

Rank	Price Point	Game	Sales (Millions)
1	\$ 10	HOLIDAY DOUBLER	\$ 3.081
2	\$ 20	MERRY MILLIONS	\$ 2.944
3	\$ 20	\$500 MILLION EXTREME CASH BLAST	\$ 2.641
4	\$ 3	LOTERIA	\$ 1.991
5	\$ 10	\$200 MILLION CASH SPECTACULAR	\$ 1.959
6	\$ 5	\$50,000 FAST CASH	\$ 1.826
7	\$ 5	NUTCRACKER CASH	\$ 1.800
8	\$ 3	JINGLE BELL CROSSWORD	\$ 1.745
9	\$ 5	HAPPY HOLIDAYS	\$ 1.739
10	\$ 3	BONUS CASHWORD	\$ 1.728

Texas Lottery Commission  
Prize Payout Tracking Report  
Unaudited

Through Week Ending 11/17/12

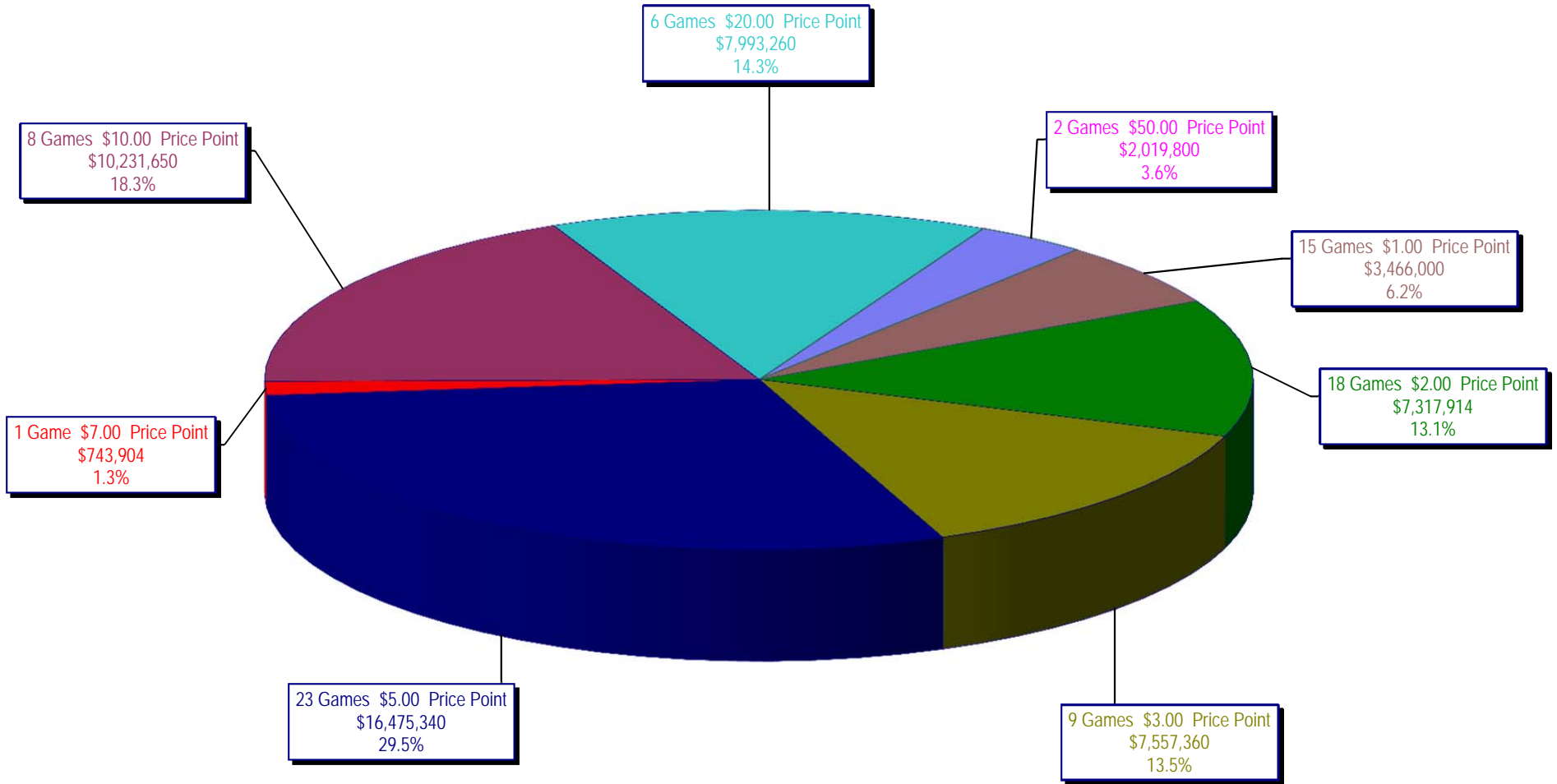
Draw Game Sales

		FY Sales Through Week Ending 11/17/2012		FY Prize Expense Through Week Ending 11/17/2012	Actual* Prize Payout	Base Payout (Prize Pool)
Lotto	\$	34,828,825	\$	24,287,490	69.73%	50.00%
Pick 3		56,599,690		33,345,500	58.91%	50.00%
Pick 3 Sum It Up		1,066,946		509,118	47.72%	50.00%
Cash Five		12,229,973		6,116,802	50.01%	50.00%
Texas Two Step		11,321,993		5,747,090	50.76%	50.00%
Mega Millions		23,281,038		11,358,195	48.79%	50.00%**
Megaplier		5,383,093		2,684,295	49.87%	N/A
Daily 4		14,878,027		6,416,425	43.13%	50.00%
Daily 4 Sum It Up		1,008,527		396,905	39.35%	50.00%
Powerball		38,382,852		19,639,692	51.17%	50.00%**
Power Play		4,714,037		2,438,483	51.73%	N/A
All or Nothing		21,422,303		13,146,324	61.37%	50.00%
<b>Totals</b>	\$	<b>225,117,303</b>	\$	<b>126,086,320</b>	<b>56.01%</b>	

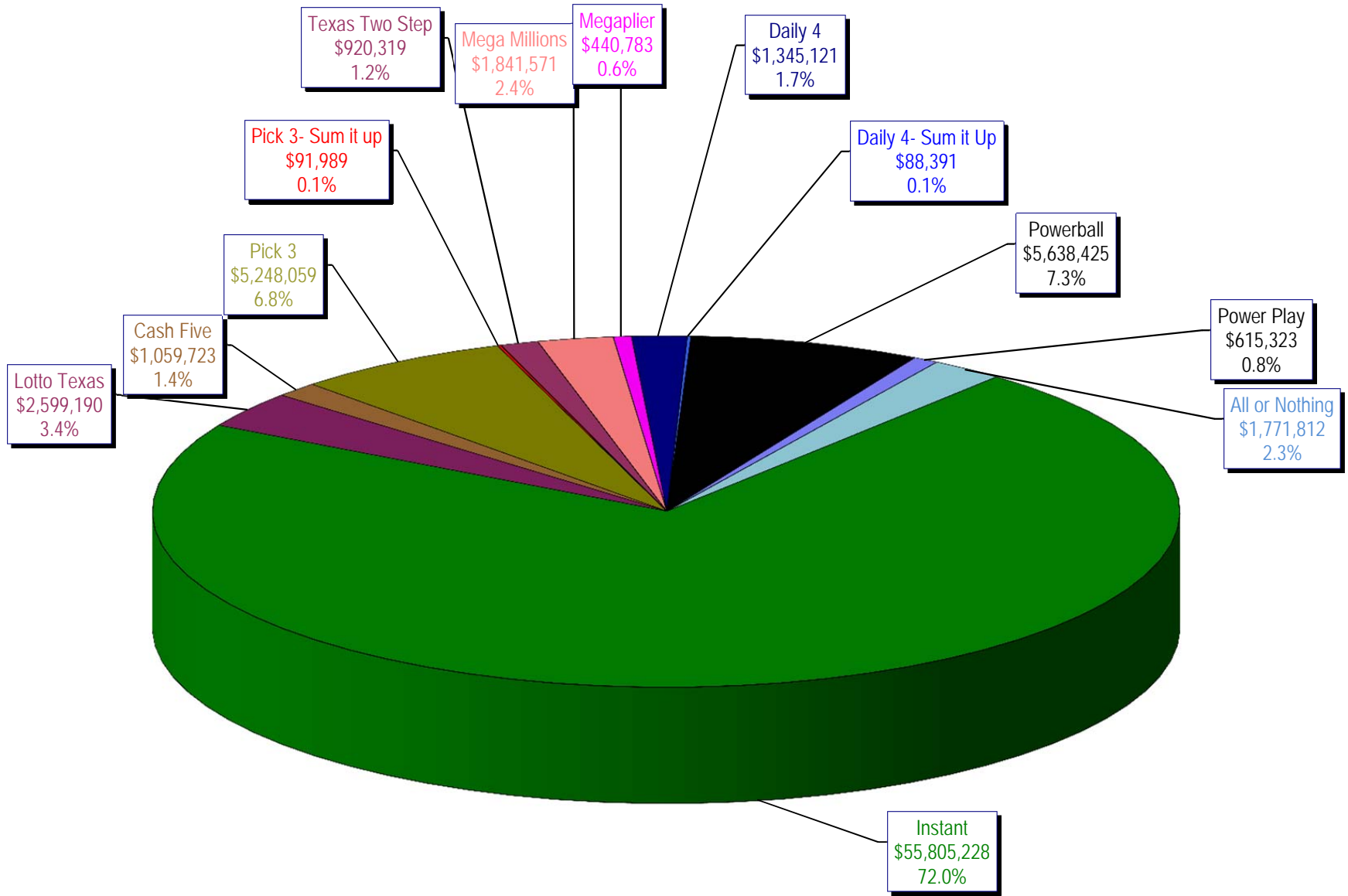
\* Before Unclaimed Prizes

\*\* Estimated; depends on # of guaranteed prizes won in Texas

Texas Lottery Commission  
Instant Ticket Sales  
For the Week Ending 11/17/12  
(Unaudited)



**Texas Lottery Commission**  
**All Game Sales**  
**For the Week Ending 11/17/12**  
**(Unaudited)**



Texas Lottery Commission - Weekly Sales Summary for FY 2013 (Unaudited)

Week Ended	Instant Games	New Games & Dates	Lotto Texas	Jackpot W S	Pick 3	Pick 3 Sum It Up	Cash Five	Texas Two Step	Jackpot M TH	Mega Millions	Jackpot T F	Megaplier	Daily 4	Daily 4 Sum It Up	Powerball	Jackpot W S	Power Play	All or Nothing	Total	Per Cap.	
9/1/2012	56,975,312	1446 (\$1, N); 1444 (\$2, N) - 08/27/12	2,972,415	12 13	4,967,337	105,441	1,198,597	1,455,689	500 675	2,769,421	73 83	612,072	1,419,103	97,265	2,680,694	70 80	364,030		75,617,375	2.95	
9/8/2012	56,941,761	1440 (\$2, N); 1458 (\$3, N); 1459 (\$5, N) - 09/03/12	3,005,564	14 15	5,112,132	106,959	1,185,494	1,179,003	875 200	3,140,536	93 105	665,392	1,412,279	99,861	3,002,910	90 100	395,287		76,247,178	2.97	
9/15/2012	56,302,875	1452 (\$3, N) - 09/10/12	2,999,894	16 17	4,785,209	95,720	1,118,519	894,412	225 200	2,684,227	120 12	580,869	1,290,478	90,795	3,373,296	110 125	417,470	2,526,342	77,160,105	3.01	
9/22/2012	54,974,438	1460 (\$1, N); 1461 (\$5, N) - 09/17/12	2,986,898	18 19	4,611,684	89,173	1,091,440	986,264	225 325	1,874,336	15 12	452,082	1,258,191	86,390	4,122,790	149 174	479,344	2,531,686	75,544,715	2.94	
9/29/2012	54,606,674	1462 (\$2, N); 1472 (\$10, N) - 09/24/12	3,047,519	20 21	4,708,250	90,752	1,077,739	1,313,257	475 625	1,884,366	14 21	452,334	1,278,847	87,211	3,779,359	200 40	445,091	2,297,966	75,069,364	2.92	
10/6/2012	59,223,327	1464 (\$5, N) - 10/01/12	3,164,231	22 23	4,947,571	96,251	1,121,146	1,188,386	800 200	2,055,918	28 36	482,303	1,310,612	89,270	2,266,428	50 40	312,877	2,244,980	78,503,300	3.06	
10/13/2012	57,075,606	1465 (\$1, N); 1466 (\$20, N) - 10/08/2012	3,133,742	24 25	4,793,793	89,663	1,074,687	865,146	225 200	2,163,099	45 53	492,614	1,261,858	84,585	2,241,120	50 60	309,684	2,128,476	75,714,073	2.95	
10/20/2012	56,630,134	1467 (\$1, N); 1468 (\$5, N) - 10/15/12	3,172,820	26 27	4,959,071	88,413	1,074,980	970,100	225 325	1,984,966	61 12	466,730	1,296,602	84,868	2,447,518	70 80	328,436	2,124,439	75,629,077	2.95	
10/27/2012	55,789,743	1469 (\$2, N); 1470 (\$10, N) - 10/22/2012	3,204,694	28 29	5,550,567	96,242	1,063,201	1,226,578	450 600	1,778,725	13 21	430,528	1,381,019	91,618	2,914,062	90 100	371,273	2,021,684	75,919,933	2.96	
11/3/2012	58,142,777	1503 (\$5, N) - 10/29/2012	3,392,650	30 31	5,501,964	101,742	1,078,593	860,073	200 225	1,950,117	27 32	462,385	1,393,099	93,773	3,466,242	110 124	424,170	1,913,200	78,780,785	3.07	
11/10/2012	57,484,804	1475 (\$1, N); 1476 (\$3, N) - 11/05/2012	3,061,999	32 4	5,468,924	100,767	1,083,928	837,666	200 200	1,783,099	12 13	430,343	1,402,194	94,451	4,246,246	143 168	491,538	1,861,718	78,347,676	3.05	
11/17/2012	55,805,228	1477 (\$2, N); 1478 (\$5, N) - 11/12/2012	2,599,190	5 6	5,248,059	91,989	1,059,723	920,319	225 300	1,841,571	19 26	440,783	1,345,121	88,391	5,638,425	185 214	615,323	1,771,812	77,465,933	3.02	
weekly change	-2.9%		-15.1%		-4.0%	-8.7%	-2.2%	9.9%		3.3%	-4.0%	2.4%	-4.1%	-6.4%	32.8%		25.2%	-4.8%	-1.1%		
	<b>SALES</b>		<b>SALES</b>		<b>SALES</b>	<b>SALES</b>	<b>SALES</b>	<b>SALES</b>		<b>SALES</b>		<b>SALES</b>	<b>SALES</b>	<b>SALES</b>	<b>SALES</b>		<b>SALES</b>		<b>SALES</b>	<b>% of Sales</b>	
Calendar Year to date	2,765,991,507		145,574,662		242,082,298	4,955,880	56,298,092	55,801,815		181,405,480		34,892,441	62,518,711	4,363,353	168,845,944		21,712,136		21,422,303	3,765,864,621	100.0%
Fiscal Year to date 2013	632,588,695		34,828,825		56,599,690	1,066,946	12,229,973	11,321,993		23,281,038		5,383,093	14,878,027	1,008,527	38,382,852		4,714,037		21,422,303	857,705,998	100.0%