



WEEKLY SALES SUMMARY

Unaudited

[Week Ending: 11/18/2017](#)

Texas Lottery Commission
Fiscal Year to Date Sales Comparison
Unaudited

Through the Week Ending 11/18/2017 (12 Weeks)

Sales by Game	FY 2016 *	FY 2017 **	FY 2018	\$ Change		% Change	
				FY 2018 to FY 2016	FY 2018 to FY 2017	FY 2018 to FY 2016	FY 2018 to FY 2017
Scratch Tickets	\$ 766,598,163	\$ 796,667,245	\$ 858,865,651	\$ 92,267,488	\$ 62,198,406	12.0%	7.8%
Lotto Texas	29,147,761	24,566,782	24,963,583	-4,184,178	396,801	-14.4%	1.6%
Lotto Extra	4,900,508	4,679,378	5,318,410	417,902	639,032	8.5%	13.7%
Pick 3	56,697,237	53,573,823	54,111,360	-2,585,878	537,537	-4.6%	1.0%
Pick 3 Sum It Up	1,145,564	1,026,393	1,067,296	-78,268	40,904	-6.8%	4.0%
Cash Five	10,569,440	9,620,521	9,215,129	-1,354,312	-405,393	-12.8%	-4.2%
Texas Two Step	12,165,513	11,362,312	10,227,459	-1,938,054	-1,134,853	-15.9%	-10.0%
Mega Millions	29,621,462	23,071,901	24,750,318	-4,871,144	1,678,417	-16.4%	7.3%
Megaplier	7,334,576	6,337,935	6,083,902	-1,250,674	-254,033	-17.1%	-4.0%
MM Just the Jackpot	-	-	251,916	251,916	251,916	-	-
Daily 4	19,329,025	19,841,060	23,368,355	4,039,330	3,527,295	20.9%	17.8%
Daily 4 Sum It Up	998,045	1,041,743	1,261,520	263,476	219,777	26.4%	21.1%
Powerball	46,405,286	48,556,981	41,683,155	-4,722,131	-6,873,826	-10.2%	-14.2%
Power Play	6,031,848	6,839,884	6,600,520	568,672	-239,364	9.4%	-3.5%
All or Nothing	7,177,352	6,401,388	6,353,916	-823,436	-47,472	-11.5%	-0.7%
Texas Triple Chance	5,891,705	3,566,226	2,807,680	-3,084,025	-758,546	-52.3%	-21.3%
Total	\$ 1,004,013,484	\$ 1,017,153,571	\$ 1,076,930,169	\$ 72,916,685	\$ 59,776,598	7.3%	5.9%

* 3 extra days

** 1 extra day

Texas Lottery Commission
Fiscal Year to Date Cumulative Average Sales Comparison
Unaudited

Through the Week Ending 11/18/2017 (12 Weeks)

Sales by Game	FY 2016	FY 2017	FY 2018
Scratch Tickets	\$ 9,348,758	\$ 9,958,341	\$ 10,871,717
Lotto Texas	355,461	307,085	315,995
Lotto Extra	59,762	58,492	67,322
Pick 3	691,430	669,673	684,954
Pick 3 Sum It Up	13,970	12,830	13,510
Cash Five	128,896	120,257	116,647
Texas Two Step	148,360	142,029	129,462
Mega Millions	361,237	288,399	313,295
Megaplier	89,446	79,224	77,011
MM Just the Jackpot	-	- **	11,451
Daily 4	235,720	248,013	295,802
Daily 4 Sum It Up	12,171	13,022	15,969
Powerball	565,918	606,962	527,635
Power Play	73,559	85,499	83,551
All or Nothing	87,529	80,017	80,429
Texas Triple Chance *	105,209	44,578	35,540
Total	\$ 12,277,426	\$ 12,714,420	\$ 13,640,289

	thru 11/21/2015	thru 11/19/2016	thru 11/18/2017
	82 days	80 days	79 days
*	56 days		** 22 days

Texas Lottery Commission
Fiscal Year Over Year Change in Sales
Unaudited
FY 2018 Compared to FY 2017

			SCRATCH TICKETS				DRAW GAMES				TOTAL SALES			
FY 2018			FY 2018	FY 2017	Difference	% change - Cumulative Sales	FY 2018	FY 2017	Difference	% change - Cumulative Sales	FY 2018	FY 2017	Difference	% change - Cumulative Sales
Week	Week Ending													
1	9/2/2017 *		\$23,058,926	\$32,980,266	(\$9,921,340)	-30.1%	\$6,902,847	\$10,218,656	(\$3,315,809)	-32.4%	\$29,961,773	\$43,198,922	(\$13,237,149)	-30.6%
2	9/9/2017		\$71,784,232	\$65,952,418	\$5,831,814	8.8%	\$18,779,001	\$19,635,377	(\$856,376)	-4.4%	\$90,563,233	\$85,587,795	\$4,975,438	5.8%
3	9/16/2017		\$72,828,393	\$66,196,270	\$6,632,123	10.0%	\$19,679,292	\$20,915,290	(\$1,235,999)	-5.9%	\$92,507,685	\$87,111,560	\$5,396,125	6.2%
4	9/23/2017		\$71,147,147	\$64,383,005	\$6,764,142	10.5%	\$18,601,742	\$17,451,165	\$1,150,577	6.6%	\$89,748,889	\$81,834,170	\$7,914,719	9.7%
5	9/30/2017		\$74,749,619	\$67,349,951	\$7,399,668	11.0%	\$18,436,682	\$17,519,852	\$916,830	5.2%	\$93,186,301	\$84,869,803	\$8,316,498	9.8%
6	10/7/2017		\$78,134,381	\$71,598,690	\$6,535,691	9.1%	\$19,297,281	\$18,211,107	\$1,086,174	6.0%	\$97,431,662	\$89,809,797	\$7,621,865	8.5%
7	10/14/2017		\$74,084,207	\$69,444,762	\$4,639,445	6.7%	\$19,185,335	\$18,075,261	\$1,110,074	6.1%	\$93,269,542	\$87,520,023	\$5,749,519	6.6%
8	10/21/2017		\$77,631,892	\$69,317,066	\$8,314,826	12.0%	\$19,573,636	\$18,422,336	\$1,151,300	6.2%	\$97,205,528	\$87,739,402	\$9,466,126	10.8%
9	10/28/2017		\$76,385,130	\$69,729,599	\$6,655,531	9.5%	\$18,788,634	\$18,535,248	\$253,386	1.4%	\$95,173,764	\$88,264,847	\$6,908,917	7.8%
10	11/4/2017		\$78,814,323	\$73,451,702	\$5,362,621	7.3%	\$19,564,629	\$20,151,939	(\$587,310)	-2.9%	\$98,378,952	\$93,603,641	\$4,775,312	5.1%
11	11/11/2017		\$78,572,697	\$70,998,320	\$7,574,377	10.7%	\$19,317,440	\$19,925,460	(\$608,020)	-3.1%	\$97,890,137	\$90,923,780	\$6,966,358	7.7%
12	11/18/2017		\$81,674,704	\$75,265,196	\$6,409,508	8.5%	\$19,938,001	\$21,424,637	(\$1,486,636)	-6.9%	\$101,612,705	\$96,689,833	\$4,922,872	5.1%
13	11/25/2017			\$68,983,157				\$24,223,331				\$93,206,488		
14	12/2/2017			\$72,688,514				\$17,653,328				\$90,341,842		
15	12/9/2017			\$71,676,549				\$18,150,590				\$89,827,139		
16	12/16/2017			\$73,909,726				\$19,814,333				\$93,724,059		
17	12/23/2017			\$77,369,179				\$19,276,415				\$96,645,594		
18	12/30/2017			\$80,868,854				\$19,289,161				\$100,158,015		
19	1/6/2018			\$73,328,624				\$18,611,644				\$91,940,268		
20	1/13/2018			\$73,471,643				\$20,351,397				\$93,823,040		
21	1/20/2018			\$72,229,342				\$20,349,310				\$92,578,652		
22	1/27/2018			\$72,056,793				\$21,668,657				\$93,725,450		
23	2/3/2018			\$77,292,806				\$22,161,789				\$99,454,595		
24	2/10/2018			\$78,699,192				\$22,100,245				\$100,799,437		
25	2/17/2018			\$77,864,124				\$24,776,465				\$102,640,589		
26	2/24/2018			\$80,287,015				\$28,133,116				\$108,420,131		
27	3/3/2018			\$87,500,184				\$20,213,859				\$107,714,043		
28	3/10/2018			\$84,966,053				\$21,024,757				\$105,990,810		
29	3/17/2018			\$82,972,977				\$20,434,291				\$103,407,268		
30	3/24/2018			\$82,217,628				\$20,282,992				\$102,500,620		
31	3/31/2018			\$86,271,920				\$19,497,142				\$105,769,062		
32	4/7/2018			\$81,499,404				\$17,854,294				\$99,353,698		
33	4/14/2018			\$81,831,134				\$17,865,636				\$99,696,770		
34	4/21/2018			\$80,531,863				\$18,337,257				\$98,869,120		
35	4/28/2018			\$81,433,819				\$18,956,981				\$100,390,800		
36	5/5/2018			\$84,857,262				\$19,489,624				\$104,346,886		
37	5/12/2018			\$81,090,824				\$19,420,237				\$100,511,061		
38	5/19/2018			\$80,557,866				\$20,939,291				\$101,497,157		
39	5/26/2018			\$78,141,293				\$21,072,651				\$99,213,944		
40	6/2/2018			\$78,991,820				\$23,569,252				\$102,561,072		
41	6/9/2018			\$77,859,970				\$29,337,930				\$107,197,900		
42	6/16/2018			\$75,964,093				\$18,618,777				\$94,582,870		

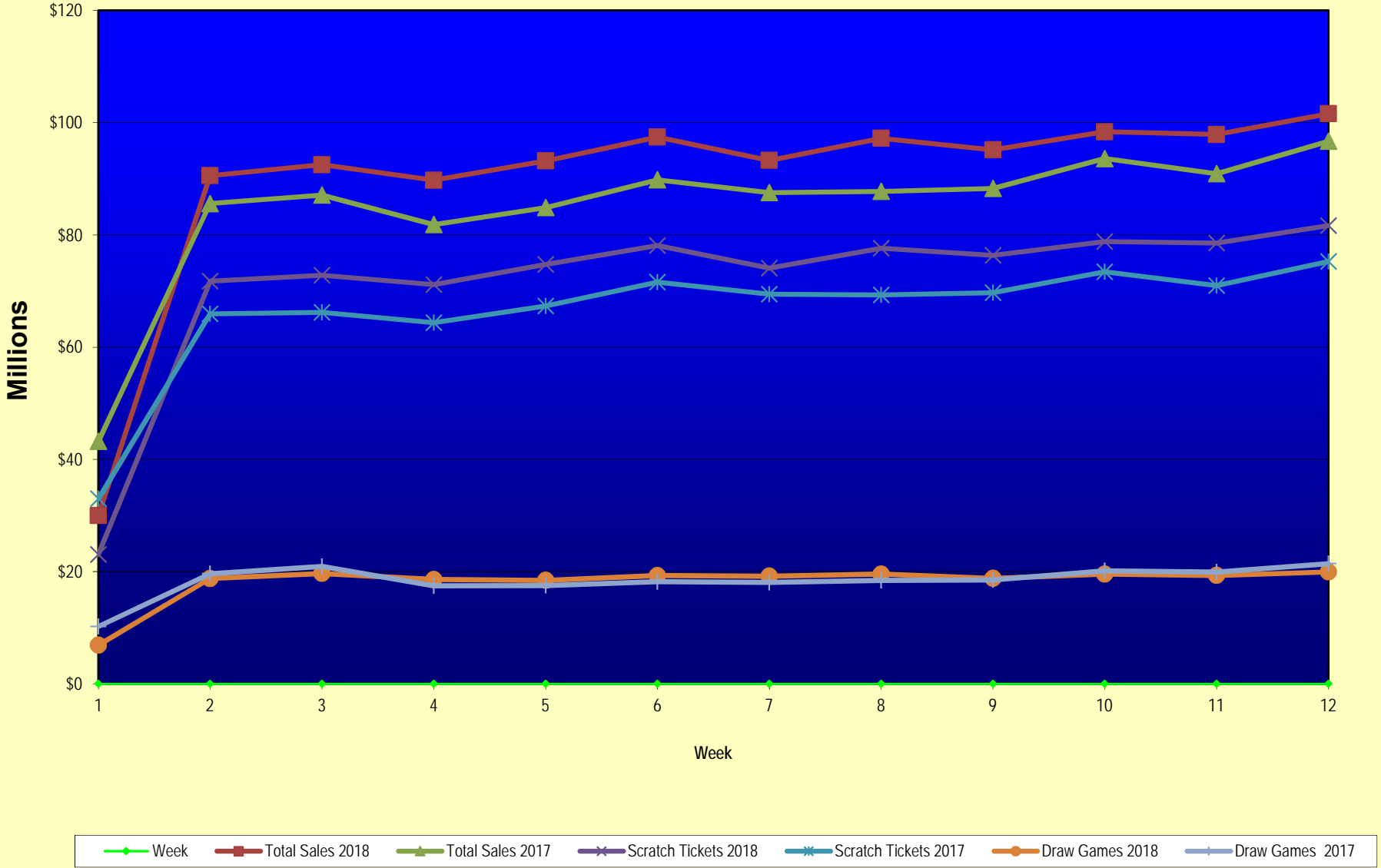
Texas Lottery Commission
Fiscal Year Over Year Change in Sales
Unaudited
FY 2018 Compared to FY 2017

			SCRATCH TICKETS				DRAW GAMES				TOTAL SALES			
FY 2018			FY 2018	FY 2017	Difference	% change - Cumulative Sales	FY 2018	FY 2017	Difference	% change - Cumulative Sales	FY 2018	FY 2017	Difference	% change - Cumulative Sales
Week	Week	Ending												
43	6/23/2018			\$75,379,863				\$18,464,310				\$93,844,173		
44	6/30/2018			\$76,450,854				\$19,685,004				\$96,135,858		
45	7/7/2018			\$75,420,516				\$20,817,697				\$96,238,213		
46	7/14/2018			\$74,068,426				\$21,553,240				\$95,621,666		
47	7/21/2018			\$75,926,884				\$21,909,933				\$97,836,817		
48	7/28/2018			\$68,526,927				\$22,791,762				\$91,318,689		
49	8/4/2018			\$74,104,794				\$27,396,555				\$101,501,349		
50	8/11/2018			\$73,356,820				\$37,340,879				\$110,697,699		
51	8/18/2018			\$74,114,510				\$42,787,014				\$116,901,524		
52	8/25/2018			\$70,061,982				\$55,854,516				\$125,916,498		
	8/31/2018 **			\$43,727,573				\$9,679,652				\$53,407,225		
Total thru Current Week			\$858,865,651	\$796,667,245	\$62,198,406	7.8%	\$218,064,518	\$220,486,326	(\$2,421,809)	-1.1%	\$1,076,930,169	\$1,017,153,571	\$59,776,598	5.9%
Fiscal Year Total			\$858,865,651	\$3,935,220,022			\$218,064,518	\$1,142,241,630			\$1,076,930,169	\$5,077,461,652		

* FY 18 includes 2 days; FY 17 includes 3 days

** FY 18 includes 6 days; FY 17 includes 5 days

Texas Lottery Commission Fiscal Year Over Year Change in Sales



Note: Week 1 is not a full week of sales as this report is prepared on a Fiscal Year basis.

Texas Lottery Commission
Scratch Tickets by Price Point
Sales, Prize Expense, Sales Contribution and Payout Percentage With Year Over Year Changes
Unaudited

Fiscal Year	Price Point	# of Active Games	FY Sales	% of Scratch Ticket Sales	Year over Year Change in Sales	FY Prize Expense	Year over Year Change in Prize Expense	FY Sales Contribution	Year over Year Change in Contribution	Average Prize Payout %	Year over Year Change in Payout %
2017	\$1.00	17	31,554,253	4.0%		19,145,557		12,408,696		60.7%	0.7%
Through	\$2.00	22	67,986,308	8.5%		44,332,846		23,653,462		65.2%	0.0%
11/19/2016	\$3.00	8	54,867,414	6.9%		36,170,728		18,696,686		65.9%	0.1%
	\$5.00	39	252,360,090	31.7%		171,448,357		80,911,733		67.9%	0.0%
	\$10.00	15	158,358,480	19.9%		111,931,181		46,427,299		70.7%	0.7%
	\$20.00	10	192,620,300	24.2%		144,331,679		48,288,621		74.9%	0.0%
	\$50.00	4	38,920,400	4.9%		30,286,377		8,634,023		77.8%	0.0%
Total		115	\$796,667,245			\$557,646,725		\$239,020,520		70.0%	0.6%
2018	\$1.00	16	31,169,545	3.6%		18,909,575		12,259,970		60.7%	0.7%
Through	\$2.00	17	61,364,074	7.1%		39,941,116		21,422,958		65.1%	-0.1%
11/18/2017	\$3.00	10	61,333,092	7.1%		40,442,476		20,890,616		65.9%	0.1%
	\$5.00	42	248,254,240	28.9%		168,768,209		79,486,031		68.0%	0.0%
	\$10.00	16	205,711,640	24.0%		144,120,316		61,591,324		70.1%	-0.3%
	\$20.00	13	185,520,360	21.6%		139,051,087		46,469,273		75.0%	0.0%
	\$50.00	4	65,512,700	7.6%		51,085,700		14,427,000		78.0%	0.1%
Total		118	\$858,865,651			\$602,318,478		\$256,547,173		70.1%	0.4%
Variance	\$1.00	-1	-384,708		-1.2%	-235,982	-1.2%	-148,726	-1.2%	-0.01%	
2018 to	\$2.00	-5	-6,622,234		-9.7%	-4,391,730	-9.9%	-2,230,504	-9.4%	-0.12%	
2017	\$3.00	2	6,465,678		11.8%	4,271,748	11.8%	2,193,930	11.7%	0.02%	
	\$5.00	3	-4,105,850		-1.6%	-2,680,148	-1.6%	-1,425,702	-1.8%	0.04%	
	\$10.00	1	47,353,160		29.9%	32,189,135	28.8%	15,164,025	32.7%	-0.62%	
	\$20.00	3	-7,099,940		-3.7%	-5,280,592	-3.7%	-1,819,348	-3.8%	0.02%	
	\$50.00	0	26,592,300		68.3%	20,799,323	68.7%	5,792,977	67.1%	0.16%	
Total		3	\$62,198,406		7.8%	\$44,671,753	8.0%	\$17,526,653	7.3%	0.13%	

Notes - Scratch Ticket Variances

Texas Lottery Commission
Scratch Tickets by Price Point
Sales, Prize Expense, Sales Contribution and Payout Percentage With Year Over Year Changes
Unaudited

			FY 2018		FY 2017	Difference
Sales	\$1 - \$5		\$402,120,951		\$406,768,065	-\$4,647,114
Prize Exp.	\$1 - \$5		\$268,061,375		\$271,097,488	-\$3,036,113
Sales Cont.	\$1 - \$5		\$134,059,576		\$135,670,577	-\$1,611,001
Prize Exp. %	\$1 - \$5		66.7%		66.6%	0.0%
			FY 2018		FY 2017	Difference
Sales	\$10 - \$50		\$456,744,700		\$389,899,180	\$66,845,520
Prize Exp.	\$10 - \$50		\$334,257,103		\$286,549,238	\$47,707,866
Sales Cont.	\$10 - \$50		\$122,487,597		\$103,349,942	\$19,137,654
Prize Exp. %	\$10 - \$50		73.2%		73.5%	-0.3%
			FY 2018		FY 2017	Difference
Sales	Scratch		\$858,865,651		\$796,667,245	\$62,198,406
Prize Exp.	Scratch		\$602,318,478		\$557,646,725	\$44,671,753
Sales Cont.	Scratch		\$256,547,173		\$239,020,520	\$17,526,653
Prize Exp. %	Scratch		70.1%		70.0%	0.1%

			FY 2018		FY 2017	Difference
Sales	\$1 - \$10		\$607,832,591		\$565,126,545	\$42,706,046
Prize Exp.	\$1 - \$10		\$412,181,691		\$383,028,669	\$29,153,022
Sales Cont.	\$1 - \$10		\$195,650,900		\$182,097,876	\$13,553,024
Prize Exp. %	\$1 - \$10		67.8%		67.8%	0.0%
			FY 2018		FY 2017	Difference
Sales	\$20 - \$50		\$251,033,060		\$231,540,700	\$19,492,360
Prize Exp.	\$20 - \$50		\$190,136,787		\$174,618,056	\$15,518,731
Sales Cont.	\$20 - \$50		\$60,896,273		\$56,922,644	\$3,973,629
Prize Exp. %	\$20 - \$50		75.7%		75.4%	0.3%
			FY 2018		FY 2017	Difference
Sales	Scratch		\$858,865,651		\$796,667,245	\$62,198,406
Prize Exp.	Scratch		\$602,318,478		\$557,646,725	\$44,671,753
Sales Cont.	Scratch		\$256,547,173		\$239,020,520	\$17,526,653
Prize Exp. %	Scratch		70.1%		70.0%	0.1%

Texas Lottery Commission
Weekly Sales Summary
& Comparison to Previous Week
 Unaudited

	Week Ending 11/18/2017	% of Sales	Week Ending 11/11/2017	% of Sales	\$ change	% change
	<u>THIS WEEK</u>		<u>LAST WEEK</u>			
Total Sales	<u>\$101,612,705</u>		<u>\$97,890,137</u>		<u>\$3,722,568</u>	3.80%
Scratch Tickets	<u>\$81,674,704</u>	80.4%	<u>\$78,572,697</u>	80.3%	<u>\$3,102,007</u>	3.95%
Lotto	\$2,379,541	2.3%	\$2,315,922	2.4%	\$63,619	2.75%
Lotto Extra	\$504,693	0.5%	\$490,024	0.5%	\$14,669	2.99%
Pick 3	\$4,782,395	4.7%	\$4,901,274	5.0%	-\$118,879	-2.43%
Pick 3 Sum It Up	\$93,156	0.1%	\$94,521	0.1%	-\$1,365	-1.44%
Cash Five	\$818,168	0.8%	\$817,975	0.8%	\$193	0.02%
Texas Two Step	\$882,520	0.9%	\$894,972	0.9%	-\$12,452	-1.39%
Mega Millions	\$2,820,440	2.8%	\$2,652,012	2.7%	\$168,428	6.35%
Megaplier	\$433,282	0.4%	\$410,066	0.4%	\$23,216	5.66%
MM Just the Jackpot	\$53,445	0.1%	\$62,832	0.1%	-\$9,387	-14.94%
Daily 4	\$2,053,707	2.0%	\$2,069,360	2.1%	-\$15,653	-0.76%
Daily 4 Sum It Up	\$108,480	0.1%	\$110,879	0.1%	-\$2,400	-2.16%
Powerball	\$3,638,718	3.6%	\$3,183,712	3.3%	\$455,006	14.29%
Power Play	\$564,829	0.6%	\$507,890	0.5%	\$56,939	11.21%
All or Nothing	\$562,306	0.6%	\$563,738	0.6%	-\$1,432	-0.25%
Texas Triple Chance	<u>\$242,322</u>	0.2%	<u>\$242,264</u>	0.2%	<u>\$58</u>	0.02%
Total Draw Game Sales	<u>\$19,938,001</u>		<u>\$19,317,440</u>		<u>\$620,561</u>	3.21%

* Totals may not sum due to rounding.

Texas Lottery Commission
Weekly Sales Summary
Unaudited

SCRATCH TICKETS
TOP TEN SELLING GAMES

For the week ending: 11/18/2017

Rank	Price Point	Game	Sales (Millions)
1	\$ 10	SEASON'S GREETINGS	\$ 4.972
2	\$ 10	MEGA LOTERIA	\$ 3.903
3	\$ 50	TEXAS LOTTERY PLATINUM	\$ 3.864
4	\$ 5	SUPER LOTERIA	\$ 3.542
5	\$ 20	TEXAS LOTTERY GOLD	\$ 3.465
6	\$ 5	DIAMOND MINE 9X	\$ 3.300
7	\$ 10	TEXAS LOTTERY BLACK	\$ 2.914
8	\$ 20	INSTANT MILLIONAIRE	\$ 2.707
9	\$ 20	ULTIMATE CROSSWORD/ULTIMATE BINGO	\$ 2.629
10	\$ 20	100X THE CASH	\$ 2.497

Texas Lottery Commission
Prize Payout Tracking Report
Unaudited

Through the week ending: 11/18/2017

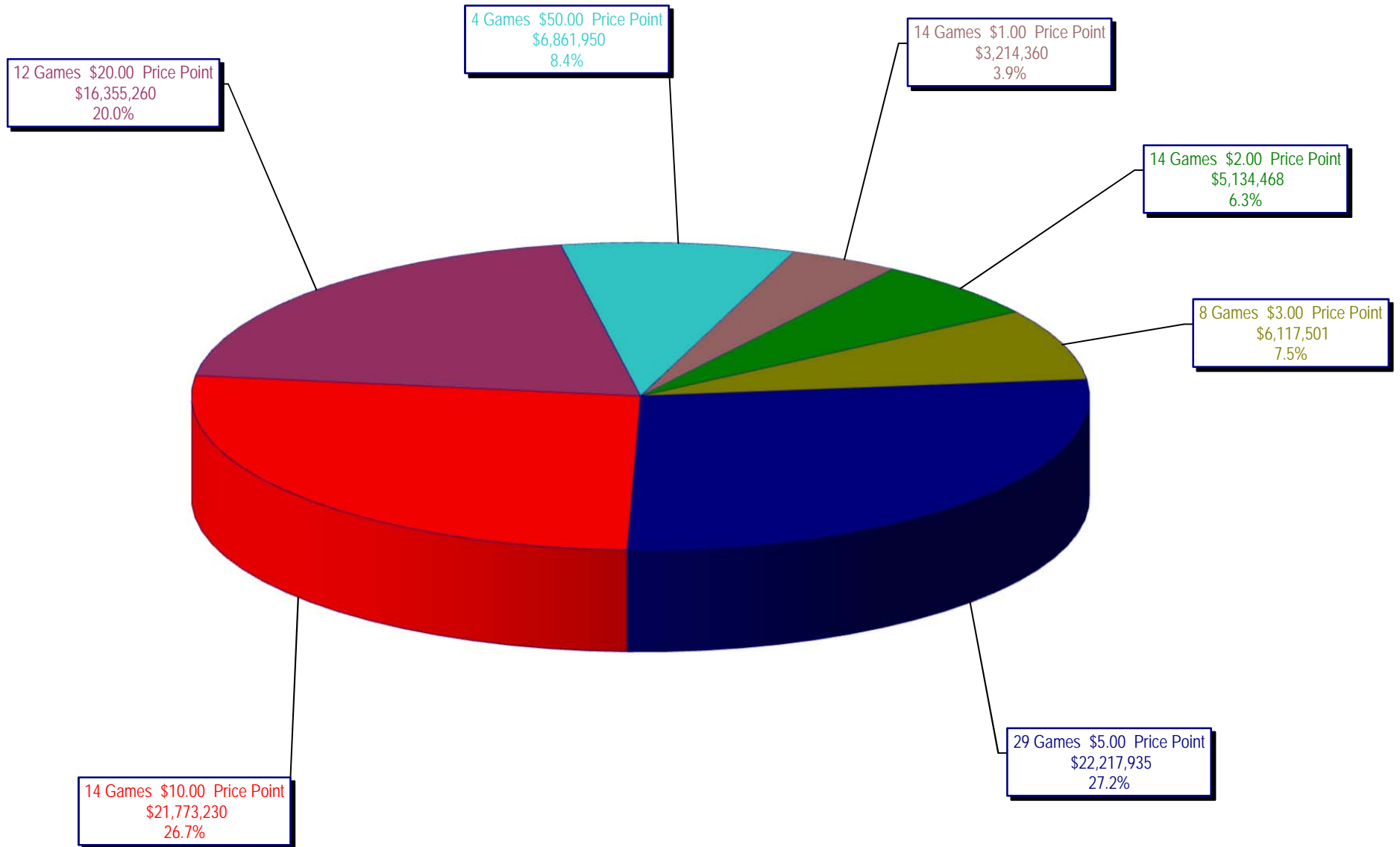
Draw Game Sales

	FY Sales Through Week Ending 11/18/2017	FY Prize Expense Through Week Ending 11/18/2017	Actual* Prize Payout	Base Payout (Prize Pool)
Lotto	\$ 24,963,583	\$ 12,239,149	49.03%	50.00%
Lotto Extra	5,318,410	3,141,816	59.07%	53.70%
Pick 3	54,111,360	24,622,620	45.50%	50.00%
Pick 3 Sum It Up	1,067,296	486,769	45.61%	50.00%
Cash Five	9,215,129	4,607,622	50.00%	50.00%
Texas Two Step	10,227,459	5,158,746	50.44%	50.00%
Mega Millions	24,750,318	12,792,252	51.69%	50.00%**
Megaplier	6,083,902	3,082,876	50.67%	N/A
MM Just the Jackpot	251,916	119,188	47.31%	50.00%**
Daily 4	23,368,355	16,462,000	70.45%	50.00%
Daily 4 Sum It Up	1,261,520	489,083	38.77%	50.00%
Powerball	41,683,155	21,009,153	50.40%	50.00%**
Power Play	6,600,520	3,329,444	50.44%	N/A
All or Nothing	6,353,916	3,710,354	58.39%	55.98%
Texas Triple Chance	2,807,680	1,275,775	45.44%	54.42%
Totals	\$ 218,064,518	\$ 112,526,846	51.60%	

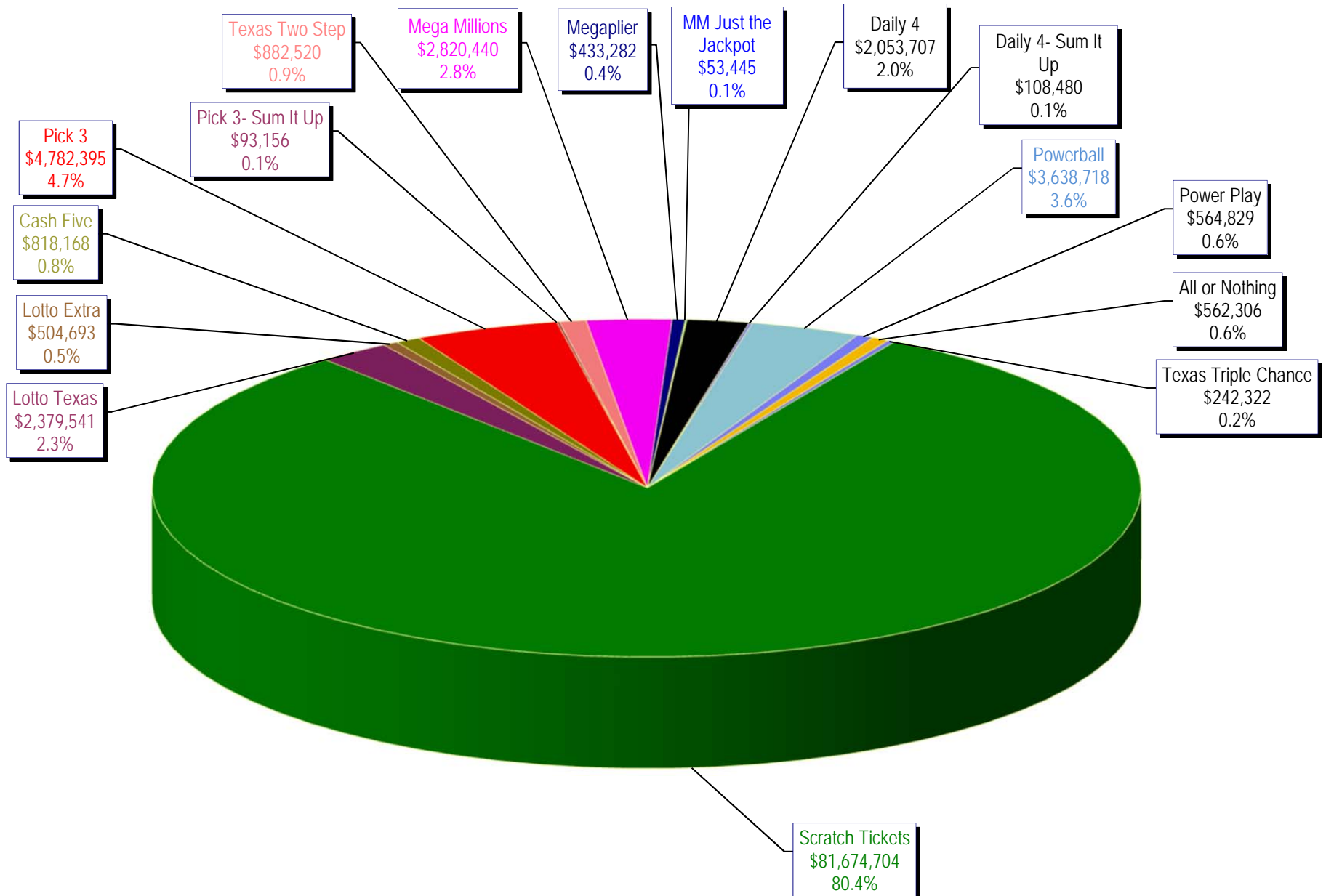
* Before Unclaimed Prizes

**Estimated; depends on # of guaranteed prizes won in Texas

Texas Lottery Commission
Scratch Ticket Sales
For the week ending 11/18/2017
(Unaudited)



Texas Lottery Commission
All Game Sales
For the week ending 11/18/2017
(Unaudited)



Texas Lottery Commission - Weekly Sales Summary for FY 2017 (Unaudited)

Week Ended	Scratch Tickets	New Games & Dates	Lotto Texas	Jackpot W	S	Lotto Extra	Pick 3	Pick 3 Sum It Up	Cash Five	Texas Two Step	Jackpot M	TH	Mega Millions	Jackpot T	F	Megaplier	MM Just the Jackpot	Daily 4	Daily 4 Sum It Up	Powerball	Jackpot W	S	Power Play	All or Nothing	Texas Triple Chance	Total	Per Cap.
9/2/2017*	66,786,499	0	1,882,138	7.75	8	407,969	4,127,448	87,462	745,315	757,964	225	250	1,839,333	45	53	546,532		1,675,002	88,460	3,160,562	53	68	527,201	510,296	226,818	83,368,998	2.99
9/9/2017	71,784,232	1894 (\$1.N); 1895 (\$3.N); 1896 (\$5.N); 1897 (\$10.N); 1898 (\$20.N) - 9/05/17	2,030,456	8.25	9	434,404	4,673,693	94,976	810,225	814,157	200	225	2,116,454	61	70	610,101		1,864,288	98,842	3,815,824	83	102	614,504	550,992	250,086	90,563,233	3.25
9/16/2017	72,628,393	0	2,072,973	9.5	10.25	441,815	4,761,239	95,625	803,128	1,009,847	275	400	2,218,181	76	86	632,423		1,969,938	107,496	4,120,318	115	132	647,273	549,860	248,976	92,507,685	3.32
9/23/2017	71,147,147	2000 (\$5.N); 1885 (\$10.N) - 9/18/17	2,083,698	10.75	11.5	444,009	4,652,157	91,944	799,261	958,113	550	200	2,417,135	94	104	676,790		1,999,292	111,399	3,062,637	40	53	505,638	554,074	245,596	89,748,889	3.22
9/30/2017	74,749,619	0	2,123,157	12	12.75	453,258	4,787,745	93,462	817,582	914,011	225	300	1,798,854	15	20	540,169		2,140,708	114,176	3,298,744	66	80	535,906	567,658	251,252	93,186,301	3.34
10/7/2017	78,134,381	1857 (\$1.N); 1871 (\$5.N); 2002 (\$20.N) - 10/02/17	2,158,233	13.5	14	461,982	4,884,513	93,622	837,916	1,157,363	425	575	1,859,000	25	30	555,420		2,086,885	112,246	3,678,352	94	112	585,624	570,242	255,884	97,431,662	3.50
10/14/2017	74,084,207	0	2,161,597	14.75	15.5	460,731	4,743,121	91,735	812,165	832,638	200	225	1,899,412	36	43	564,073		2,060,922	109,910	4,013,728	128	143	621,796	564,614	248,894	93,269,542	3.35
10/21/2017	77,631,892	2003 (\$2.N); 2004 (\$5.N); 1899 (\$50.N) - 10/16/17	2,191,085	16	16.75	466,612	4,682,503	94,156	810,073	1,008,511	300	425	1,677,423	15	20	505,340		2,117,469	116,022	4,422,740	156	173	670,007	563,200	248,496	97,205,528	3.49
10/28/2017	76,385,130	0	2,227,162	17.25	18.25	475,194	4,654,638	92,765	797,066	786,381	200	200	1,737,391	25	30	493,983	22,971	2,144,198	121,467	3,852,082	191	40	595,303	547,396	240,638	95,173,764	3.42
11/4/2017	78,814,323	0	2,333,965	18.75	19.25	494,349	4,926,697	96,245	820,269	887,674	225	275	2,753,000	40	48	421,360	112,668	2,205,239	114,585	3,078,822	52	64	500,061	571,658	248,038	98,378,952	3.53
11/11/2017	78,572,697	2005 (\$1.N); 2006 (\$3.N); 2007 (\$5.N); 2008 (\$10.N) - 11/06/17	2,315,922	19.75	20.5	490,024	4,901,274	94,521	817,975	894,972	400	200	2,652,012	59	71	410,066	62,832	2,069,360	110,879	3,183,712	75	90	507,890	563,738	242,264	97,890,137	3.51
11/18/2017	81,674,704	2085 (\$2.N); 1891 (\$5.N); 2011 (\$10.N) - 11/15/17	2,379,541	21.25	21.75	504,693	4,782,395	93,156	818,168	882,520	225	275	2,820,440	82	95	433,282	53,445	2,053,707	108,480	3,638,718	103	119	564,829	562,306	242,322	101,612,705	3.65
weekly change	3.9%		2.7%			3.0%	-2.4%	-1.4%	0.0%	-1.4%			6.4%			5.7%	-14.9%	-0.8%	-2.2%	14.3%			11.2%	-0.3%	0.0%	3.8%	
	SALES		SALES			SALES	SALES	SALES	SALES	SALES			SALES	SALES	SALES	SALES	SALES	SALES	SALES	SALES	SALES	SALES	SALES	SALES	SALES	SALES	% of Sales
Calendar Year to date	3,551,922,449		100,648,983			20,704,077	222,371,933	4,346,546	38,237,045	46,615,667			121,344,829	31,627,348	251,916	88,723,863	4,756,145	266,674,948	37,362,613	25,681,888	12,064,864	4,573,335,113	100.0%				
Fiscal Year to date 2018	858,865,651		24,963,583			5,318,410	54,111,360	1,067,296	9,215,129	10,227,459			24,750,318	6,083,902	251,916	23,368,355	1,261,520	41,683,155	6,600,520	6,353,916	2,807,680	1,076,930,169	100.0%				

*Full week includes 5 days from FY17