



WEEKLY SALES SUMMARY

Unaudited

[Week Ending: 11/19/2011](#)

Texas Lottery Commission
Fiscal Year to Date Sales Comparison
Unaudited

Through the week ending 11/19/2011 (12 weeks)

Sales by Game	FY 2010 *	FY 2011 **	FY 2012	\$ Change		% Change	
				FY 2012 to FY 2010	FY 2012 to FY 2011 to	FY 2012 to FY 2010	FY 2012 to FY 2011
Instants	\$ 606,907,422	\$ 586,172,518	\$ 604,018,449	\$ -2,888,973	\$ 17,845,931	-0.5%	3.0%
Lotto Texas	68,217,864	37,974,173	38,437,281	-29,780,583	463,108	-43.7%	1.2%
Pick 3	60,117,792	60,188,516	57,519,653	-2,598,139	-2,668,863	-4.3%	-4.4%
Pick 3 Sum It Up	1,205,012	1,225,323	1,167,141	-37,871	-58,182	-3.1%	-4.7%
Cash Five	15,233,490	14,201,782	14,053,834	-1,179,656	-147,948	-7.7%	-1.0%
Texas Two Step	9,774,370	9,893,690	14,039,555	4,265,185	4,145,865	43.6%	41.9%
Mega Millions	43,224,522	28,952,996	30,192,011	-13,032,511	1,239,015	-30.2%	4.3%
Megaplier	9,751,854	6,529,644	6,901,888	-2,849,966	372,244	-29.2%	5.7%
Daily 4	11,458,801	12,416,817	13,386,345	1,927,544	969,528	16.8%	7.8%
Daily 4 Sum It Up	1,124,240	975,363	1,006,831	-117,409	31,468	-10.4%	3.2%
Powerball	-	19,356,641	30,031,315	30,031,315	10,674,674	-	-
Power Play	-	4,620,665	6,407,003	6,407,003	1,786,338	-	-
Total	\$ 827,015,366	\$ 782,508,127	\$ 817,161,306	\$ -9,854,061	\$ 34,653,179	-1.2%	4.4%

* 2 extra days

** 1 extra day

Texas Lottery Commission
Fiscal Year to Date Cumulative Average Sales Comparison
Unaudited

Through the week ending 11/19/2011 (12 weeks)

Sales by Game	FY 2010	FY 2011	FY 2012
Instant	\$ 7,401,310	\$ 7,236,698	\$ 7,550,231
Lotto Texas	831,925	468,817	480,466
Pick 3	733,144	743,068	718,996
Pick 3 Sum It Up	14,695	15,127	14,589
Cash Five	185,774	175,331	175,673
Texas Two Step	119,200	122,144	175,494
Mega Millions	527,128	357,444	377,400
Megaplier	118,925	80,613	86,274
Daily 4	139,741	153,294	167,329
Daily 4 Sum It Up	13,710	12,042	12,585
Powerball	-	238,971	375,391
Power Play	-	57,045	80,088
Total	\$ 10,085,553	\$ 9,660,594	\$ 10,214,516
	thru 11/21/2009 82 days	thru 11/20/2010 81 days	thru 11/19/2011 80 days

Texas Lottery Commission
Fiscal Year Over Year Change in Sales
Unaudited
FY 2012 Compared to FY 2011

Week	FY 2012 Week Ending	INSTANT TICKETS				ON-LINE GAMES				TOTAL SALES			
		FY 2012	FY 2011	Difference	% change - Cumulative Sales	FY 2012	FY 2011	Difference	% change - Cumulative Sales	FY 2012	FY 2011	Difference	% change - Cumulative Sales
1	9/3/2011**	\$25,147,181	\$31,659,033	(\$6,511,852)	-20.6%	\$9,704,561	\$11,430,717	(\$1,726,156)	-15.1%	\$34,851,742	\$43,089,750	(\$8,238,008)	-19.1%
2	9/10/2011	\$50,591,068	\$48,912,598	\$1,678,470	3.4%	\$17,681,853	\$16,398,160	\$1,283,693	7.8%	\$68,272,921	\$65,310,758	\$2,962,163	4.5%
3	9/17/2011	\$49,835,063	\$48,988,241	\$846,822	1.7%	\$16,842,326	\$17,166,827	(\$324,501)	-1.9%	\$66,677,389	\$66,155,068	\$522,321	0.8%
4	9/24/2011	\$49,777,138	\$48,471,310	\$1,305,828	2.7%	\$17,504,800	\$15,623,813	\$1,880,987	12.0%	\$67,281,938	\$64,095,123	\$3,186,815	5.0%
5	10/1/2011	\$51,040,274	\$50,145,138	\$895,136	1.8%	\$18,653,100	\$16,453,939	\$2,199,161	13.4%	\$69,693,374	\$66,599,077	\$3,094,297	4.6%
6	10/8/2011	\$53,715,157	\$50,918,591	\$2,796,566	5.5%	\$17,225,680	\$16,974,963	\$250,717	1.5%	\$70,940,837	\$67,893,554	\$3,047,283	4.5%
7	10/15/2011	\$51,942,121	\$49,096,011	\$2,846,110	5.8%	\$17,854,980	\$16,661,904	\$1,193,077	7.2%	\$69,797,101	\$65,757,915	\$4,039,187	6.1%
8	10/22/2011	\$52,837,769	\$50,158,946	\$2,678,823	5.3%	\$19,558,519	\$17,374,460	\$2,184,060	12.6%	\$72,396,288	\$67,533,406	\$4,862,883	7.2%
9	10/29/2011	\$52,206,644	\$49,775,287	\$2,431,357	4.9%	\$21,504,565	\$18,402,209	\$3,102,356	16.9%	\$73,711,209	\$68,177,496	\$5,533,713	8.1%
10	11/5/2011	\$56,265,310	\$53,337,848	\$2,927,462	5.5%	\$20,870,086	\$17,321,908	\$3,548,179	20.5%	\$77,135,396	\$70,659,756	\$6,475,641	9.2%
11	11/12/2011	\$55,682,645	\$52,285,479	\$3,397,166	6.5%	\$17,862,404	\$16,388,690	\$1,473,714	9.0%	\$73,545,049	\$68,674,169	\$4,870,880	7.1%
12	11/19/2011	\$54,978,079	\$52,424,036	\$2,554,043	4.9%	\$17,879,985	\$16,138,022	\$1,741,963	10.8%	\$72,858,064	\$68,562,058	\$4,296,006	6.3%
13	11/26/2011		\$51,262,518				\$15,967,075				\$67,229,593		
14	12/3/2011		\$56,385,259				\$17,553,175				\$73,938,434		
15	12/10/2011		\$56,540,048				\$17,703,352				\$74,243,400		
16	12/17/2011		\$57,699,991				\$18,465,282				\$76,165,273		
17	12/24/2011		\$59,800,480				\$19,635,771				\$79,436,251		
18	12/31/2011		\$61,423,121				\$26,122,257				\$87,545,378		
19	1/7/2012		\$60,976,653				\$33,521,570				\$94,498,223		
20	1/14/2012		\$50,099,433				\$17,114,637				\$67,214,070		
21	1/21/2012		\$53,143,646				\$18,091,208				\$71,234,854		
22	1/28/2012		\$54,096,128				\$17,446,156				\$71,542,284		
23	2/4/2012		\$53,433,592				\$17,388,581				\$70,822,173		
24	2/11/2012		\$60,277,094				\$18,233,038				\$78,510,132		
25	2/18/2012		\$61,536,763				\$19,387,518				\$80,924,281		
26	2/25/2012		\$59,046,203				\$20,054,404				\$79,100,607		
27	3/3/2012		\$60,537,060				\$19,478,807				\$80,015,867		
28	3/10/2012		\$59,997,361				\$19,601,658				\$79,599,019		
29	3/17/2012		\$57,835,554				\$21,189,563				\$79,025,117		
30	3/24/2012		\$57,911,940				\$29,729,651				\$87,641,591		
31	3/31/2012		\$60,407,139				\$19,519,264				\$79,926,403		
32	4/7/2012		\$60,704,285				\$19,455,317				\$80,159,602		
33	4/14/2012		\$57,663,398				\$17,866,867				\$75,530,265		
34	4/21/2012		\$56,740,216				\$17,429,326				\$74,169,542		
35	4/28/2012		\$58,042,011				\$17,104,548				\$75,146,559		
36	5/5/2012		\$66,509,159				\$17,744,833				\$84,253,992		
37	5/12/2012		\$53,769,716				\$17,783,942				\$71,553,658		
38	5/19/2012		\$53,704,228				\$18,623,882				\$72,328,110		
39	5/26/2012		\$52,310,134				\$19,115,921				\$71,426,055		
40	6/2/2012		\$53,256,725				\$18,462,603				\$71,719,328		
41	6/9/2012		\$54,293,614				\$17,213,019				\$71,506,633		
42	6/16/2012		\$52,688,230				\$17,534,413				\$70,222,643		

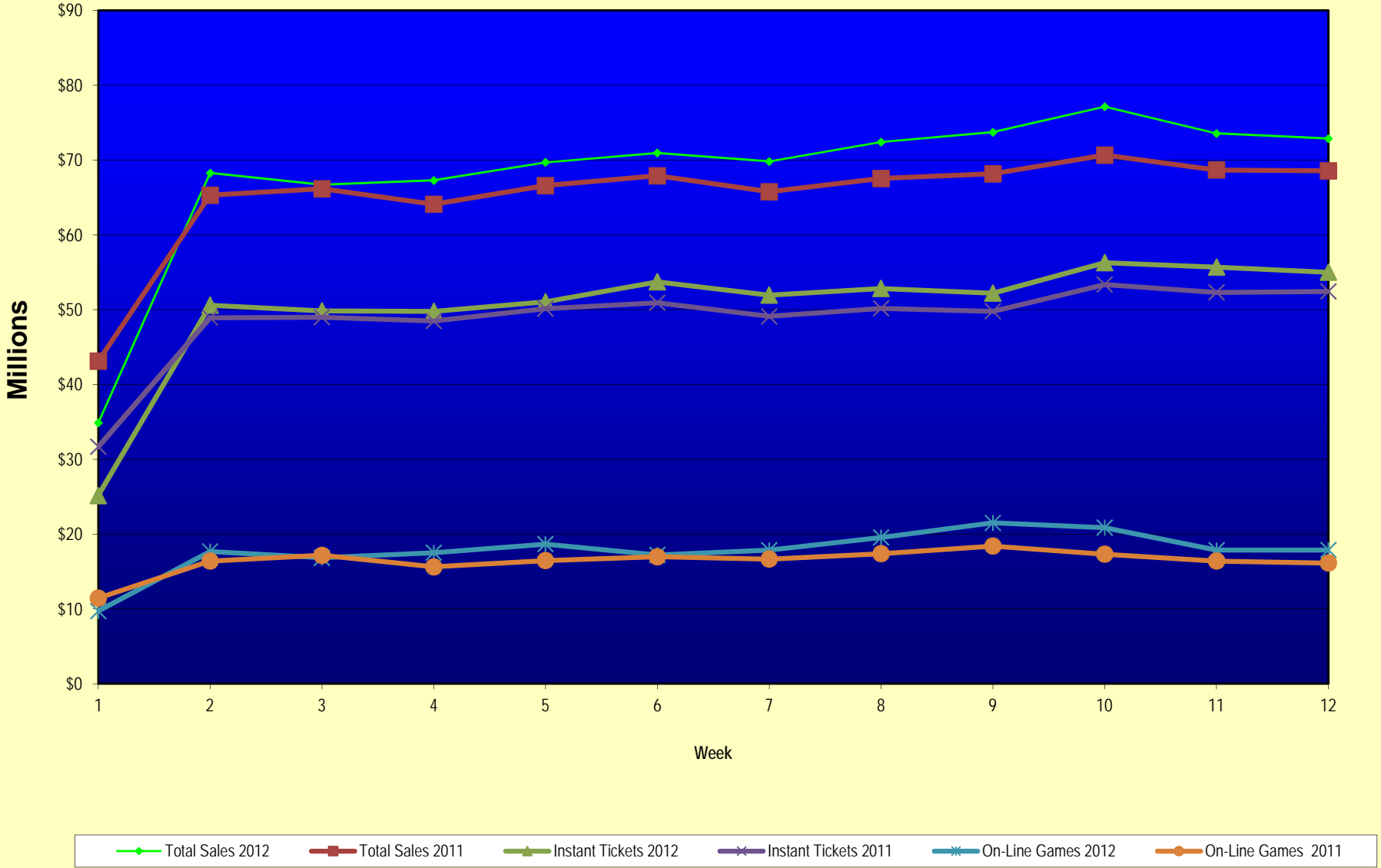
Note: Week 1 is not a full week of sales as this report is prepared on a Fiscal Year basis.

Texas Lottery Commission
Fiscal Year Over Year Change in Sales
Unaudited
FY 2012 Compared to FY 2011

Week	FY 2012 Week Ending	INSTANT TICKETS				ON-LINE GAMES				TOTAL SALES			
		FY 2012	FY 2011	Difference	% change - Cumulative Sales	FY 2012	FY 2011	Difference	% change - Cumulative Sales	FY 2012	FY 2011	Difference	% change - Cumulative Sales
43	6/23/2012		\$53,174,595				\$17,086,937				\$70,261,532		
44	6/30/2012		\$53,687,509				\$18,406,785				\$72,094,294		
45	7/7/2012		\$53,054,685				\$16,211,989				\$69,266,674		
46	7/14/2012		\$51,161,290				\$16,945,733				\$68,107,023		
47	7/21/2012		\$50,807,750				\$17,362,213				\$68,169,963		
48	7/28/2012		\$51,277,179				\$18,870,764				\$70,147,943		
49	8/4/2012		\$53,320,489				\$20,922,034				\$74,242,523		
50	8/11/2012		\$50,914,022				\$19,467,124				\$70,381,146		
51	8/18/2012		\$49,905,898				\$17,419,045				\$67,324,943		
52	8/25/2012		\$49,424,242				\$16,837,474				\$66,261,716		
	8/31/2012		\$27,274,804				\$8,600,118				\$35,874,922		
Total thru Current Week		\$604,018,449	\$586,172,518	\$17,845,931	3.0%	\$213,142,857	\$196,335,609	\$16,807,248	8.6%	\$817,161,306	\$782,508,127	\$34,653,179	4.4%
Fiscal Year Total		\$604,018,449	\$2,842,266,680			\$213,142,857	\$969,003,455			\$817,161,306	\$3,811,270,135		

** FY 2011 includes 4 days; FY 2012 includes 3 days

Texas Lottery Commission Fiscal Year Over Year Change in Sales



Note: Week 1 is not a full week of sales as this report is prepared on a Fiscal Year basis.

Texas Lottery Commission
Instant Tickets by Price Point
Sales, Prize Expense, Sales Contribution and Payout Percentage With Year Over Year Changes
Unaudited

Fiscal Year	Price Point	# of Active Games	FY Sales	% of Instant Ticket Sales	Year over Year Change in Sales	FY Prize Expense	Year over Year Change in Prize Expense	FY Sales Contribution	Year over Year Change in Contribution	Average Prize Payout %	Year over Year Change in Payout %
2011	\$1.00	23	41,019,557	7.0%		25,227,622		15,791,935		61.5%	2.3%
thru	\$2.00	25	88,292,616	15.1%		57,964,745		30,327,871		65.7%	0.8%
11/20/2010	\$3.00	16	70,367,573	12.0%		46,245,413		24,122,160		65.7%	0.2%
	\$5.00	31	186,298,655	31.8%		126,904,102		59,394,553		68.1%	0.1%
	\$7.00	6	25,721,017	4.4%		17,484,587		8,236,430		68.0%	0.0%
	\$10.00	12	75,941,500	13.0%		53,669,514		22,271,986		70.7%	1.0%
	\$20.00	5	77,227,700	13.2%		57,188,067		20,039,633		74.1%	1.2%
	\$50.00	2	21,303,900	3.6%		16,538,685		4,765,215		77.6%	4.1%
Total		120	\$586,172,518			\$401,222,736		\$184,949,782		68.4%	1.0%
2012	\$1.00	24	43,075,833	7.1%		26,307,557		16,768,276		61.1%	0.5%
thru	\$2.00	25	84,002,172	13.9%		54,632,990		29,369,182		65.0%	-0.8%
11/19/2011	\$3.00	14	74,934,762	12.4%		49,177,368		25,757,394		65.6%	0.1%
	\$5.00	30	185,546,800	30.7%		126,157,055		59,389,745		68.0%	0.1%
	\$7.00	4	15,388,492	2.5%		10,464,028		4,924,464		68.0%	0.0%
	\$10.00	13	99,568,190	16.5%		70,175,820		29,392,370		70.5%	-0.8%
	\$20.00	5	84,595,800	14.0%		63,093,746		21,502,054		74.6%	-0.1%
	\$50.00	1	16,906,400	2.8%		13,131,583		3,774,817		77.7%	0.1%
Total		116	\$604,018,449			\$413,140,146		\$190,878,303		68.4%	-0.1%
Variance	\$1.00	1	2,056,276		5.0%	1,079,935	4.3%	976,341	6.2%	-0.43%	
2012 to	\$2.00	0	-4,290,444		-4.9%	-3,331,755	-5.7%	-958,689	-3.2%	-0.61%	
2011	\$3.00	-2	4,567,189		6.5%	2,931,954	6.3%	1,635,235	6.8%	-0.09%	
	\$5.00	-1	-751,855		-0.4%	-747,048	-0.6%	-4,807	0.0%	-0.13%	
	\$7.00	-2	-10,332,525		-40.2%	-7,020,559	-40.2%	-3,311,966	-40.2%	0.02%	
	\$10.00	1	23,626,690		31.1%	16,506,306	30.8%	7,120,384	32.0%	-0.19%	
	\$20.00	0	7,368,100		9.5%	5,905,678	10.3%	1,462,422	7.3%	0.53%	
	\$50.00	-1	-4,397,500		-20.6%	-3,407,102	-20.6%	-990,398	-20.8%	0.04%	
Total		-4	\$17,845,931		3.0%	\$11,917,409	3.0%	\$5,928,522	3.2%	-0.05%	

Notes - Instant Ticket Variances

Texas Lottery Commission
Instant Tickets by Price Point
Sales, Prize Expense, Sales Contribution and Payout Percentage With Year Over Year Changes
 Unaudited

			FY 2012		FY 2011	Difference
Sales	\$1 - \$7		\$402,948,059		\$411,699,418	-\$8,751,359
Prize Exp.	\$1 - \$7		\$266,738,997		\$273,826,470	-\$7,087,473
Sales Cont.	\$1 - \$7		\$136,209,062		\$137,872,948	-\$1,663,886
Prize Exp. %	\$1 - \$7		66.2%		66.5%	-0.3%
			FY 2012		FY 2011	Difference
Sales	\$10 - \$50		\$201,070,390		\$174,473,100	\$26,597,290
Prize Exp.	\$10 - \$50		\$146,401,149		\$127,396,267	\$19,004,882
Sales Cont.	\$10 - \$50		\$54,669,241		\$47,076,833	\$7,592,408
Prize Exp. %	\$10 - \$50		72.8%		73.0%	-0.2%
			FY 2012		FY 2011	Difference
Sales	Instant		\$604,018,449		\$586,172,518	\$17,845,931
Prize Exp.	Instant		\$413,140,146		\$401,222,736	\$11,917,409
Sales Cont.	Instant		\$190,878,303		\$184,949,782	\$5,928,522
Prize Exp. %	Instant		68.4%		68.4%	0.0%

			FY 2012		FY 2011	Difference
Sales	\$1 - \$10		\$502,516,249		\$487,640,918	\$14,875,331
Prize Exp.	\$1 - \$10		\$336,914,817		\$327,495,984	\$9,418,833
Sales Cont.	\$1 - \$10		\$165,601,432		\$160,144,934	\$5,456,498
Prize Exp. %	\$1 - \$10		67.0%		67.2%	-0.1%
			FY 2012		FY 2011	Difference
Sales	\$20 - \$50		\$101,502,200		\$98,531,600	\$2,970,600
Prize Exp.	\$20 - \$50		\$76,225,329		\$73,726,752	\$2,498,576
Sales Cont.	\$20 - \$50		\$25,276,871		\$24,804,848	\$472,024
Prize Exp. %	\$20 - \$50		75.1%		74.8%	0.3%
			FY 2012		FY 2011	Difference
Sales	Instant		\$604,018,449		\$586,172,518	\$17,845,931
Prize Exp.	Instant		\$413,140,146		\$401,222,736	\$11,917,409
Sales Cont.	Instant		\$190,878,303		\$184,949,782	\$5,928,522
Prize Exp. %	Instant		68.4%		68.4%	0.0%

Texas Lottery Commission
 Weekly Sales Summary
 & Comparison to Previous Week
 Unaudited

	Week Ending 11/19/2011		Week Ending 11/12/2011			
	<u>THIS WEEK</u>	% of Sales	<u>LAST WEEK</u>	% of Sales	<u>\$ change</u>	<u>% change</u>
Total Sales	<u>\$72,858,064</u>		<u>\$73,545,049</u>		<u>-\$686,985</u>	-0.93%
Instant Tickets	<u>\$54,978,079</u>	75.5%	<u>\$55,682,645</u>	75.7%	<u>-\$704,566</u>	-1.27%
Lotto	\$3,575,231	4.9%	\$3,673,137	5.0%	-\$97,906	-2.67%
Pick 3	\$5,216,095	7.2%	\$5,298,645	7.2%	-\$82,550	-1.56%
Pick 3 Sum It Up	\$106,956	0.1%	\$109,575	0.1%	-\$2,620	-2.39%
Cash Five	\$1,246,366	1.7%	\$1,268,630	1.7%	-\$22,264	-1.75%
Texas Two Step	\$1,059,355	1.5%	\$961,349	1.3%	\$98,006	10.19%
Mega Millions	\$2,300,050	3.2%	\$2,362,698	3.2%	-\$62,648	-2.65%
Megaplier	\$550,825	0.8%	\$552,133	0.8%	-\$1,308	-0.24%
Daily 4	\$1,224,365	1.7%	\$1,235,272	1.7%	-\$10,907	-0.88%
Daily 4 Sum It Up	\$89,978	0.1%	\$92,025	0.1%	-\$2,047	-2.22%
Powerball	\$2,033,222	2.8%	\$1,861,697	2.5%	\$171,525	9.21%
Power Play	\$477,542	0.7%	\$447,243	0.6%	\$30,299	6.77%
Total Online Sales	<u>\$17,879,985</u>		<u>\$17,862,404</u>		<u>\$17,581</u>	0.10%

* Totals may not sum due to rounding.

Texas Lottery Commission
Weekly Sales Summary
Unaudited

INSTANT TICKETS
TOP TEN SELLING GAMES

For the Week Ending : 11/19/11

Rank	Price Point	Game	Sales (Millions)
1	\$ 20	MERRY MILLIONAIRE	3.080
2	\$ 10	SEASON'S GREETINGS	2.912
3	\$ 10	20X THE MONEY	2.671
4	\$ 5	SILVER BELLS	2.626
5	\$ 20	\$500,000,000 FRENZY	2.524
6	\$ 5	\$100,000 EXTREME CASH	2.485
7	\$ 3	MERRY CROSSWORD	2.104
8	\$ 5	MEGA MONEY	1.951
9	\$ 5	BLACK ONYX 7S	1.791
10	\$ 3	BONUS CASHWORD	1.678

Texas Lottery Commission
Prize Payout Tracking Report
Unaudited

Through Week Ending 11/19/11

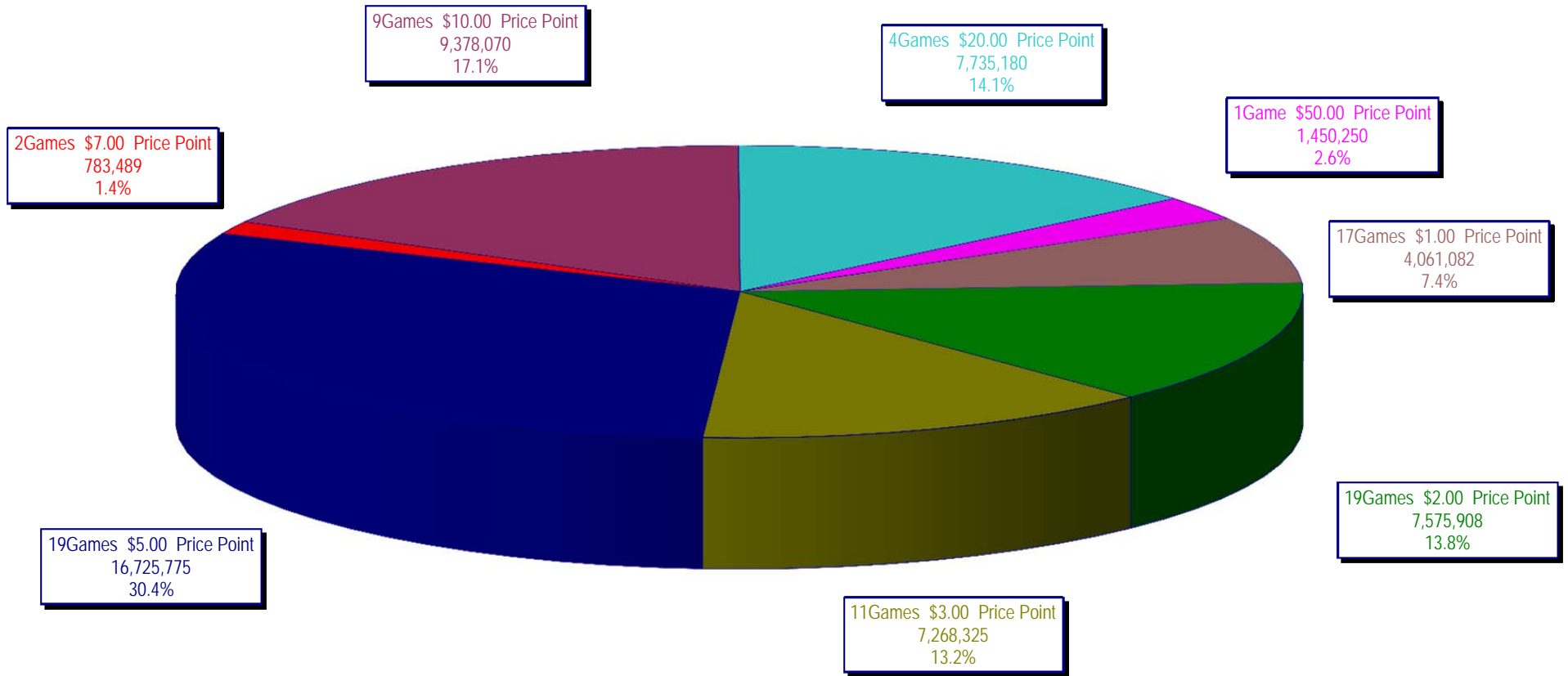
On-Line Sales

		FY Sales Through Week Ending 11/19/2011		FY Prize Expense Through Week Ending 11/19/2011	Actual* Prize Payout	Base Payout (Prize Pool)
Lotto	\$	38,437,281	\$	22,791,603	59.30%	50.00%
Pick 3		57,519,653		25,827,990	44.90%	50.00%
Pick 3 Sum It Up		1,167,141		526,615	45.12%	50.00%
Cash Five		14,053,834		7,027,056	50.00%	50.00%
Texas Two Step		14,039,555		7,049,939	50.21%	50.00%
Mega Millions		30,192,011		14,662,965	48.57%	50.00%**
Megaplier		6,901,888		4,180,493	60.57%	N/A
Daily 4		13,386,345		6,364,975	47.55%	50.00%
Daily 4 Sum It Up		1,006,831		400,831	39.81%	50.00%
Powerball		30,031,315		15,138,952	50.41%	50.00%**
Power Play		6,407,003		3,124,640	48.77%	N/A
Totals	\$	213,142,857	\$	107,096,059	50.25%	

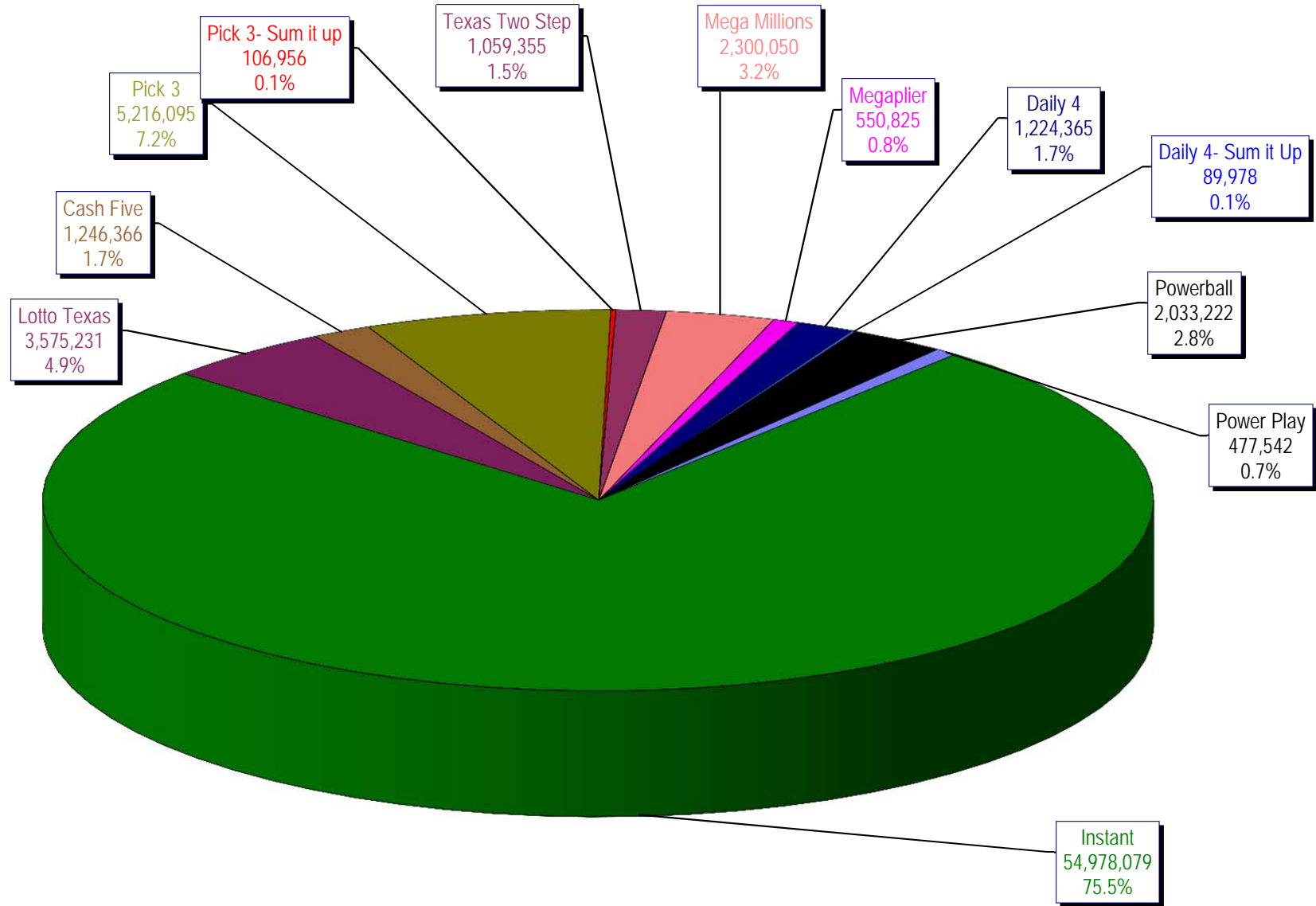
* Before Unclaimed Prizes

** Estimated; depends on # of guaranteed prizes won in Texas

Texas Lottery Commission
Instant Ticket Sales
For the Week Ending 11/19/11
(Unaudited)



**Texas Lottery Commission
All Game Sales
For the Week Ending 11/19/11
(Unaudited)**



Texas Lottery Commission - Weekly Sales Summary for FY 2011 (Unaudited)

Week Ended	Instant Games	New Games & Dates	Lotto Texas	Jackpot		Pick 3	Pick 3 Sum It Up	Cash Five	Texas Two Step	Jackpot		Mega Millions	Jackpot		Megaplier	Daily 4	Daily 4 Sum It Up	Powerball	Jackpot		Power Play	Total	Per Cap.
				W	S					M	TH		T	F					W	S			
9/3/2011	52,421,985	1340 (\$1,N); 1310 (\$2, N) - 08/29/11	3,710,974	23	24	5,228,940	100,997	1,239,134	989,988	225	300	2,248,664	21	29	539,246	1,221,178	93,318	2,401,555	75	91	530,686	70,726,664	2.81
9/10/2011	50,591,068	1360 (\$3, N) - 09/05/11	3,329,350	25	4	5,103,026	99,259	1,198,563	935,771	450	200	2,387,766	37	44	557,225	1,180,505	88,443	2,295,315	107	20	506,631	68,272,921	2.71
9/17/2011	49,835,063	0	3,031,798	5	6	4,953,079	100,990	1,210,562	961,592	225	300	2,801,526	54	65	626,459	1,125,230	83,532	1,560,522	25	20	387,037	66,677,389	2.64
9/24/2011	49,777,138	1362(\$1, N); 1363(5,N); 1364(\$5,N) - 09/19/11	3,083,973	7	8	4,819,453	97,999	1,200,444	1,283,472	450	600	3,206,022	75	86	692,909	1,092,294	82,198	1,561,655	25	30	384,383	67,281,938	2.67
10/1/2011	51,040,274	1365(\$2,N) - 09/26/11	3,196,730	9	10	4,846,896	97,026	1,215,715	1,146,613	800	200	4,033,330	96	113	830,660	1,096,271	83,993	1,693,809	37	47	412,058	69,693,374	2.76
10/8/2011	53,715,157	1366(\$1,N) - 10/03/11	3,231,892	11	12	5,064,771	102,919	1,252,733	1,004,251	225	300	2,176,684	12	14	527,777	1,188,636	92,825	2,103,034	58	71	480,159	70,940,837	2.81
10/15/2011	51,942,121	1367 (\$7, N) - 10/10/11	3,230,925	13	14	4,776,985	99,008	1,214,385	1,337,436	450	625	2,260,036	22	30	542,787	1,132,415	84,772	2,613,215	86	105	563,017	69,797,101	2.77
10/22/2011	52,837,769	1369 (\$1, N); 1370 (\$5, N) - 10/17/11	3,250,317	15	16	4,784,201	98,306	1,202,768	1,887,302	825	1,050	2,386,255	39	48	561,705	1,130,353	83,722	3,477,867	124	148	695,724	72,396,288	2.87
10/29/2011	52,206,644	1371 (\$2, N) - 10/24/11	3,302,201	17	18	4,685,786	95,887	1,186,987	2,055,399	1,300	1,550	2,592,752	57	67	596,631	1,107,441	82,921	4,895,300	173	203	903,261	73,711,209	2.92
11/5/2011	56,265,310	1373 (\$10, N) - 10/31/11	3,570,825	19	20	5,165,835	105,793	1,240,514	910,036	200	200	2,497,308	78	12	583,481	1,222,706	92,619	4,617,172	245	20	863,799	77,135,396	3.06
11/12/2011	55,682,645	1375 (\$3, N); 1374 (\$1, N) - 11/07/11	3,673,137	21	22	5,298,645	109,575	1,268,630	961,349	225	200	2,362,698	15	22	552,133	1,235,272	92,025	1,861,697	25	35	447,243	73,545,049	2.92
11/19/2011	54,978,079	1376(\$2, N); 1377 (\$5, N) - 11/14/11	3,575,231	23	24	5,216,095	106,956	1,246,366	1,059,355	225	325	2,300,050	30	40	550,825	1,224,365	89,978	2,033,222	46	60	477,542	72,858,064	2.89
weekly change	-1.3%		-2.7%			-1.6%	-2.4%	-1.8%	10.2%			-2.7%			-0.2%	-0.9%	-2.2%	9.2%			6.8%	-0.9%	
	SALES		SALES			SALES	SALES	SALES	SALES			SALES			SALES	SALES	SALES	SALES			SALES	SALES	% of Sales
Startup to date	42,479,376,651		10,946,443,340			4,184,879,974	24,470,474	2,334,962,495	591,874,022			1,515,623,736			347,037,059	214,389,033	23,976,271	186,423,199			42,670,348	63,100,260,573	100.0%
Calendar Year to date	2,524,479,984		154,996,814			241,248,289	123,957	57,387,173	48,641,306			150,400,848			32,383,289	53,241,692	3,960,465	103,481,707			22,854,078	3,393,199,601	100.0%
Fiscal Year to date 2012	604,018,449		38,437,281			57,519,653	1,167,141	14,053,834	14,039,555			30,192,011			6,901,888	13,386,345	1,006,831	30,031,315			6,407,003	817,161,306	100.0%