



WEEKLY SALES SUMMARY

Unaudited

[Week Ending: 11/21/2015](#)

Texas Lottery Commission
Fiscal Year to Date Sales Comparison
Unaudited

Through the Week Ending 11/21/2015 (12 Weeks)

Sales by Game	FY 2014 *	FY 2015 **	FY 2016	\$ Change		% Change	
				FY 2016 to FY 2014	FY 2016 to FY 2015	FY 2016 to FY 2014	FY 2016 to FY 2015
Scratch Tickets	\$ 722,398,855	\$ 739,995,839	\$ 766,598,163	\$ 44,199,308	\$ 26,602,324	6.1%	3.6%
Lotto Texas	30,942,934	27,305,548	29,147,761	-1,795,173	1,842,213	-5.8%	6.7%
Lotto Extra	3,907,267	4,114,527	4,900,508	993,241	785,981	25.4%	19.1%
Pick 3	57,941,879	56,412,460	56,697,237	-1,244,642	284,777	-2.1%	0.5%
Pick 3 Sum It Up	1,148,139	1,085,210	1,145,564	-2,575	60,354	-0.2%	5.6%
Cash Five	12,129,144	11,326,699	10,569,440	-1,559,704	-757,259	-12.9%	-6.7%
Texas Two Step	13,055,140	13,135,689	12,165,513	-889,627	-970,176	-6.8%	-7.4%
Mega Millions	32,387,133	37,929,832	29,621,462	-2,765,671	-8,308,370	-8.5%	-21.9%
Megaplier	7,159,433	8,523,410	7,334,576	175,143	-1,188,834	2.4%	-13.9%
Daily 4	19,079,262	18,872,652	19,329,025	249,764	456,373	1.3%	2.4%
Daily 4 Sum It Up	1,180,257	1,140,665	998,045	-182,213	-142,620	-15.4%	-12.5%
Powerball	57,203,015	41,361,975	46,405,286	-10,797,729	5,043,311	-18.9%	12.2%
Power Play	6,540,956	5,347,897	6,031,848	-509,108	683,951	-7.8%	12.8%
All or Nothing	11,086,416	9,066,210	7,177,352	-3,909,064	-1,888,858	-35.3%	-20.8%
Monopoly	-	1,851,850	-	-	-1,851,850	-	-100.0%
Texas Triple Chance	-	-	5,891,705	5,891,705	5,891,705	-	-
Total	\$ 976,159,829	\$ 977,470,463	\$ 1,004,013,484	\$ 27,853,656	\$ 26,543,022	2.9%	2.7%

* 2 extra days

** 1 extra day

Texas Lottery Commission
Fiscal Year to Date Cumulative Average Sales Comparison
Unaudited

Through the Week Ending 11/21/2015 (12 Weeks)

Sales by Game	FY 2014	FY 2015	FY 2016
Scratch Tickets	\$ 8,599,986	\$ 8,915,613	\$ 9,348,758
Lotto Texas	368,368	328,983	355,461
Lotto Extra	46,515	49,573	59,762
Pick 3	689,784	679,668	691,430
Pick 3 Sum It Up	13,668	13,075	13,970
Cash Five	144,395	136,466	128,896
Texas Two Step	155,418	158,261	148,360
Mega Millions	385,561	456,986	361,237
Megaplier	85,231	102,692	89,446
Daily 4	227,134	227,381	235,720
Daily 4 Sum It Up	14,051	13,743	12,171
Powerball	680,988	498,337	565,918
Power Play	77,869	64,432	73,559
All or Nothing	131,981	109,231	87,529
Monopoly	- **	52,910	-
Texas Triple Chance	- *	-	105,209
Total	\$ 11,620,950	\$ 11,807,351	\$ 12,277,426

thru 11/23/2013
84 days

**

thru 11/22/2014
83 days
35 days

*

thru 11/21/2015
82 days
56 days

Texas Lottery Commission
Fiscal Year Over Year Change in Sales
Unaudited
FY 2016 Compared to FY 2015

			SCRATCH TICKETS				DRAW GAMES				TOTAL SALES			
FY 2016			FY 2016	FY 2015	Difference	% change - Cumulative Sales	FY 2016	FY 2015	Difference	% change - Cumulative Sales	FY 2016	FY 2015	Difference	% change - Cumulative Sales
Week	Week Ending													
1	9/5/2015 *		\$49,534,249	\$54,911,801	(\$5,377,552)	-9.8%	\$17,091,724	\$17,482,488	(\$390,765)	-2.2%	\$66,625,973	\$72,394,289	(\$5,768,317)	-8.0%
2	9/12/2015		\$61,566,291	\$61,436,533	\$129,758	0.2%	\$20,630,922	\$19,097,081	\$1,533,841	8.0%	\$82,197,213	\$80,533,614	\$1,663,599	2.1%
3	9/19/2015		\$63,530,657	\$60,959,234	\$2,571,423	4.2%	\$20,327,253	\$20,567,894	(\$240,641)	-1.2%	\$83,857,910	\$81,527,128	\$2,330,782	2.9%
4	9/26/2015		\$61,731,400	\$59,710,056	\$2,021,344	3.4%	\$22,252,290	\$19,920,828	\$2,331,462	11.7%	\$83,983,690	\$79,630,884	\$4,352,806	5.5%
5	10/3/2015		\$67,048,415	\$62,119,854	\$4,928,561	7.9%	\$25,436,791	\$18,531,421	\$6,905,370	37.3%	\$92,485,206	\$80,651,275	\$11,833,931	14.7%
6	10/10/2015		\$66,049,706	\$61,253,665	\$4,796,041	7.8%	\$18,138,977	\$18,985,332	(\$846,355)	-4.5%	\$84,188,683	\$80,238,997	\$3,949,687	4.9%
7	10/17/2015		\$65,073,593	\$60,230,048	\$4,843,545	8.0%	\$17,776,414	\$19,538,402	(\$1,761,988)	-9.0%	\$82,850,007	\$79,768,450	\$3,081,558	3.9%
8	10/24/2015		\$64,087,437	\$62,384,112	\$1,703,325	2.7%	\$18,450,464	\$21,475,643	(\$3,025,179)	-14.1%	\$82,537,901	\$83,859,755	(\$1,321,854)	-1.6%
9	10/31/2015		\$66,025,374	\$63,404,713	\$2,620,661	4.1%	\$19,568,150	\$23,568,817	(\$4,000,668)	-17.0%	\$85,593,524	\$86,973,530	(\$1,380,007)	-1.6%
10	11/7/2015		\$68,137,192	\$65,486,719	\$2,650,473	4.0%	\$20,398,351	\$23,749,032	(\$3,350,681)	-14.1%	\$88,535,543	\$89,235,751	(\$700,208)	-0.8%
11	11/14/2015		\$65,449,428	\$61,745,521	\$3,703,907	6.0%	\$20,169,382	\$17,449,604	\$2,719,779	15.6%	\$85,618,810	\$79,195,125	\$6,423,686	8.1%
12	11/21/2015		\$68,364,421	\$66,353,583	\$2,010,838	3.0%	\$17,174,606	\$17,108,084	\$66,522	0.4%	\$85,539,027	\$83,461,667	\$2,077,360	2.5%
13	11/28/2015			\$60,471,184				\$17,303,129				\$77,774,313		
14	12/5/2015			\$66,648,696				\$18,862,425				\$85,511,121		
15	12/12/2015			\$65,708,630				\$18,649,598				\$84,358,228		
16	12/19/2015			\$68,551,298				\$19,051,100				\$87,602,398		
17	12/26/2015			\$73,858,618				\$20,006,357				\$93,864,975		
18	1/2/2016			\$67,733,268				\$21,355,167				\$89,088,435		
19	1/9/2016			\$64,745,641				\$22,265,347				\$87,010,988		
20	1/16/2016			\$64,015,166				\$23,694,617				\$87,709,783		
21	1/23/2016			\$62,569,156				\$19,765,442				\$82,334,598		
22	1/30/2016			\$68,001,588				\$22,877,000				\$90,878,588		
23	2/6/2016			\$75,677,650				\$31,662,209				\$107,339,859		
24	2/13/2016			\$75,368,712				\$46,091,747				\$121,460,459		
25	2/20/2016			\$74,833,076				\$19,865,172				\$94,698,248		
26	2/27/2016			\$69,918,013				\$19,735,352				\$89,653,365		
27	3/5/2016			\$74,848,961				\$19,946,068				\$94,795,029		
28	3/12/2016			\$70,079,409				\$20,044,562				\$90,123,971		
29	3/19/2016			\$70,368,686				\$18,480,795				\$88,849,481		
30	3/26/2016			\$70,280,600				\$17,595,205				\$87,875,805		
31	4/2/2016			\$74,369,952				\$18,378,917				\$92,748,869		
32	4/9/2016			\$67,416,817				\$18,594,844				\$86,011,661		
33	4/16/2016			\$68,393,316				\$18,104,632				\$86,497,948		
34	4/23/2016			\$70,078,182				\$17,957,150				\$88,035,332		
35	4/30/2016			\$71,744,718				\$18,961,113				\$90,705,831		
36	5/7/2016			\$73,415,978				\$20,210,341				\$93,626,319		
37	5/14/2016			\$72,152,109				\$20,362,774				\$92,514,883		
38	5/21/2016			\$70,399,950				\$21,246,276				\$91,646,226		
39	5/28/2016			\$68,547,554				\$22,227,946				\$90,775,500		
40	6/4/2016			\$71,254,006				\$20,739,703				\$91,993,709		
41	6/11/2016			\$65,878,375				\$17,216,403				\$83,094,778		
42	6/18/2016			\$66,658,742				\$17,340,531				\$83,999,273		

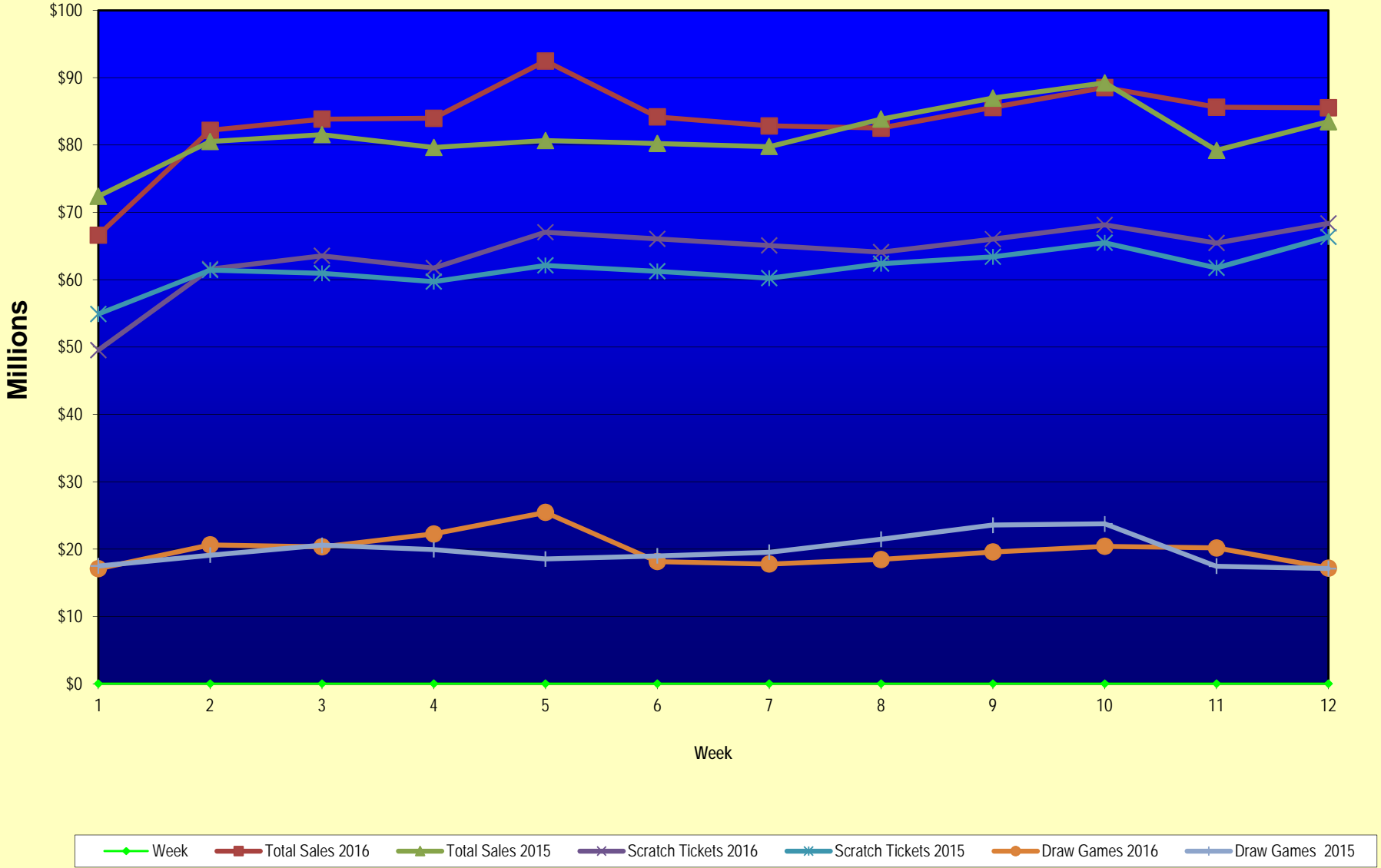
Texas Lottery Commission
Fiscal Year Over Year Change in Sales
Unaudited
FY 2016 Compared to FY 2015

			SCRATCH TICKETS				DRAW GAMES				TOTAL SALES			
FY 2016			FY 2016	FY 2015	Difference	% change - Cumulative Sales	FY 2016	FY 2015	Difference	% change - Cumulative Sales	FY 2016	FY 2015	Difference	% change - Cumulative Sales
Week	Week	Ending												
43	6/25/2016			\$65,282,276				\$16,873,368				\$82,155,644		
44	7/2/2016			\$67,757,752				\$18,007,540				\$85,765,292		
45	7/9/2016			\$64,718,254				\$18,203,985				\$82,922,239		
46	7/16/2016			\$64,957,977				\$18,792,785				\$83,750,762		
47	7/23/2016			\$62,541,241				\$18,229,965				\$80,771,206		
48	7/30/2016			\$66,468,460				\$17,742,489				\$84,210,949		
49	8/6/2016			\$62,412,598				\$17,331,374				\$79,743,972		
50	8/13/2016			\$62,089,389				\$17,501,599				\$79,590,988		
51	8/20/2016			\$62,437,148				\$17,779,458				\$80,216,606		
52	8/27/2016			\$61,403,206				\$18,529,560				\$79,932,766		
	8/31/2016 **			\$17,309,621				\$3,279,958				\$20,589,579		
Total thru Current Week			\$766,598,163	\$739,995,839	\$26,602,324	3.6%	\$237,415,321	\$237,474,624	(\$59,303)	0.0%	\$1,004,013,484	\$977,470,463	\$26,543,022	2.7%
Fiscal Year Total			\$766,598,163	\$3,481,361,812			\$237,415,321	\$1,048,338,613			\$1,004,013,484	\$4,529,700,425		

* FY 16 includes 5 days; FY 15 includes 6 days

** FY 16 includes 4 days; FY 15 includes 2 days

Texas Lottery Commission Fiscal Year Over Year Change in Sales



Note: Week 1 is not a full week of sales as this report is prepared on a Fiscal Year basis.

Texas Lottery Commission
Scratch Tickets by Price Point
Sales, Prize Expense, Sales Contribution and Payout Percentage With Year Over Year Changes
Unaudited

Fiscal Year	Price Point	# of Active Games	FY Sales	% of Scratch Ticket Sales	Year over Year Change in Sales	FY Prize Expense	Year over Year Change in Prize Expense	FY Sales Contribution	Year over Year Change in Contribution	Average Prize Payout %	Year over Year Change in Payout %
2015	\$1.00	16	37,527,585	5.1%		23,165,310		14,362,275		61.7%	3.0%
Through	\$2.00	25	77,182,150	10.4%		51,384,362		25,797,788		66.6%	2.7%
11/22/2014	\$3.00	11	73,637,934	10.0%		48,534,112		25,103,822		65.9%	0.4%
	\$5.00	36	234,141,880	31.6%		159,058,717		75,083,163		67.9%	0.0%
	\$10.00	13	150,521,910	20.3%		106,280,907		44,241,003		70.6%	0.4%
	\$20.00	8	132,689,780	17.9%		99,504,786		33,184,994		75.0%	0.2%
	\$50.00	3	34,294,600	4.6%		26,651,363		7,643,237		77.7%	0.1%
Total		112	\$739,995,839			\$514,579,555		\$225,416,284		69.5%	0.9%
2016	\$1.00	13	34,132,926	4.5%		20,682,204		13,450,722		60.6%	0.1%
thru	\$2.00	25	74,778,716	9.8%		48,658,047		26,120,669		65.1%	-0.7%
11/21/2015	\$3.00	9	67,503,741	8.8%		44,415,716		23,088,025		65.8%	-0.2%
	\$5.00	39	244,857,680	31.9%		166,350,073		78,507,607		67.9%	0.0%
	\$10.00	14	154,372,470	20.1%		108,167,564		46,204,906		70.1%	-0.3%
	\$20.00	9	152,979,180	20.0%		114,645,497		38,333,683		74.9%	0.0%
	\$50.00	3	37,973,450	5.0%		29,533,080		8,440,370		77.8%	0.0%
Total		112	\$766,598,163			\$532,452,182		\$234,145,981		69.5%	0.0%
Variance	\$1.00	-3	-3,394,659		-9.0%	-2,483,106	-10.7%	-911,553	-6.3%	-1.14%	
2015 to	\$2.00	0	-2,403,434		-3.1%	-2,726,314	-5.3%	322,880	1.3%	-1.51%	
2014	\$3.00	-2	-6,134,193		-8.3%	-4,118,395	-8.5%	-2,015,798	-8.0%	-0.11%	
	\$5.00	3	10,715,800		4.6%	7,291,357	4.6%	3,424,443	4.6%	0.00%	
	\$10.00	1	3,850,560		2.6%	1,886,657	1.8%	1,963,903	4.4%	-0.54%	
	\$20.00	1	20,289,400		15.3%	15,140,711	15.2%	5,148,689	15.5%	-0.05%	
	\$50.00	0	3,678,850		10.7%	2,881,717	10.8%	797,133	10.4%	0.06%	
Total		0	\$26,602,324		3.6%	\$17,872,627	3.5%	\$8,729,697	3.9%	-0.08%	

Notes - Scratch Ticket Variances

Texas Lottery Commission
Scratch Tickets by Price Point
Sales, Prize Expense, Sales Contribution and Payout Percentage With Year Over Year Changes
Unaudited

			FY 2016		FY 2015	Difference
Sales	\$1 - \$5		\$421,273,063		\$422,489,549	-\$1,216,486
Prize Exp.	\$1 - \$5		\$280,106,041		\$282,142,500	-\$2,036,459
Sales Cont.	\$1 - \$5		\$141,167,022		\$140,347,049	\$819,973
Prize Exp. %	\$1 - \$5		66.5%		66.8%	-0.3%
			FY 2016		FY 2015	Difference
Sales	\$10 - \$50		\$345,325,100		\$317,506,290	\$27,818,810
Prize Exp.	\$10 - \$50		\$252,346,141		\$232,437,056	\$19,909,086
Sales Cont.	\$10 - \$50		\$92,978,959		\$85,069,234	\$7,909,724
Prize Exp. %	\$10 - \$50		73.1%		73.2%	-0.1%
			FY 2016		FY 2015	Difference
Sales	Scratch		\$766,598,163		\$739,995,839	\$26,602,324
Prize Exp.	Scratch		\$532,452,182		\$514,579,555	\$17,872,627
Sales Cont.	Scratch		\$234,145,981		\$225,416,284	\$8,729,697
Prize Exp. %	Scratch		69.5%		69.5%	-0.1%

			FY 2016		FY 2015	Difference
Sales	\$1 - \$10		\$575,645,533		\$573,011,459	\$2,634,074
Prize Exp.	\$1 - \$10		\$388,273,605		\$388,423,406	-\$149,802
Sales Cont.	\$1 - \$10		\$187,371,928		\$184,588,053	\$2,783,876
Prize Exp. %	\$1 - \$10		67.5%		67.8%	-0.3%
			FY 2016		FY 2015	Difference
Sales	\$20 - \$50		\$190,952,630		\$166,984,380	\$23,968,250
Prize Exp.	\$20 - \$50		\$144,178,577		\$126,156,149	\$18,022,428
Sales Cont.	\$20 - \$50		\$46,774,053		\$40,828,231	\$5,945,822
Prize Exp. %	\$20 - \$50		75.5%		75.5%	0.0%
			FY 2016		FY 2015	Difference
Sales	Scratch		\$766,598,163		\$739,995,839	\$26,602,324
Prize Exp.	Scratch		\$532,452,182		\$514,579,555	\$17,872,627
Sales Cont.	Scratch		\$234,145,981		\$225,416,284	\$8,729,697
Prize Exp. %	Scratch		69.5%		69.5%	-0.1%

Texas Lottery Commission
Weekly Sales Summary
& Comparison to Previous Week
 Unaudited

	Week Ending 11/21/2015	% of Sales	Week Ending 11/14/2015	% of Sales	\$ change	% change
	<u>THIS WEEK</u>		<u>LAST WEEK</u>			
Total Sales	<u>\$85,539,027</u>		<u>\$85,618,810</u>		<u>-\$79,784</u>	-0.09%
Scratch Tickets	<u>\$68,364,421</u>	79.9%	<u>\$65,449,428</u>	76.4%	<u>\$2,914,993</u>	4.45%
Lotto	\$2,173,857	2.5%	\$2,185,621	2.6%	-\$11,764	-0.54%
Lotto Extra	\$369,519	0.4%	\$373,102	0.4%	-\$3,583	-0.96%
Pick 3	\$4,674,293	5.5%	\$4,726,211	5.5%	-\$51,918	-1.10%
Pick 3 Sum It Up	\$88,988	0.1%	\$93,030	0.1%	-\$4,043	-4.35%
Cash Five	\$862,630	1.0%	\$870,215	1.0%	-\$7,585	-0.87%
Texas Two Step	\$825,054	1.0%	\$1,087,101	1.3%	-\$262,047	-24.11%
Mega Millions	\$1,830,909	2.1%	\$4,139,462	4.8%	-\$2,308,553	-55.77%
Megaplier	\$489,485	0.6%	\$938,757	1.1%	-\$449,272	-47.86%
Daily 4	\$1,632,096	1.9%	\$1,614,727	1.9%	\$17,369	1.08%
Daily 4 Sum It Up	\$82,077	0.1%	\$82,536	0.1%	-\$459	-0.56%
Powerball	\$2,553,907	3.0%	\$2,437,413	2.8%	\$116,494	4.78%
Power Play	\$370,594	0.4%	\$357,760	0.4%	\$12,834	3.59%
All or Nothing	\$586,348	0.7%	\$574,596	0.7%	\$11,752	2.05%
Texas Triple Chance	\$634,850	0.7%	\$688,852	0.8%	-\$54,002	-7.84%
Total Draw Game Sales	<u>\$17,174,606</u>		<u>\$20,169,382</u>		<u>-\$2,994,777</u>	-14.85%

* Totals may not sum due to rounding.

Texas Lottery Commission
Weekly Sales Summary
Unaudited

SCRATCH TICKETS
TOP TEN SELLING GAMES

For the week ending: 11/21/2015

Rank	Price Point	Game	Sales (Millions)
1	\$ 20	HOLIDAY GAME BOOK	\$ 3.964
2	\$ 10	HAPPY HOLIDAYS	\$ 3.329
3	\$ 20	100X THE CASH	\$ 3.167
4	\$ 5	WILD 10'S	\$ 2.869
5	\$ 10	CASHWORD MULTIPLIER	\$ 2.827
6	\$ 50	DIAMOND DOLLARS	\$ 2.616
7	\$ 20	\$1,000,000 INSTANT CASHOUT	\$ 2.586
8	\$ 3	BONUS CASHWORD	\$ 2.335
9	\$ 20	\$500,000,000 CASH	\$ 2.321
10	\$ 3	TEXAS LOTERIA	\$ 2.317

Texas Lottery Commission
Prize Payout Tracking Report
Unaudited

Through the week ending: 11/21/2015

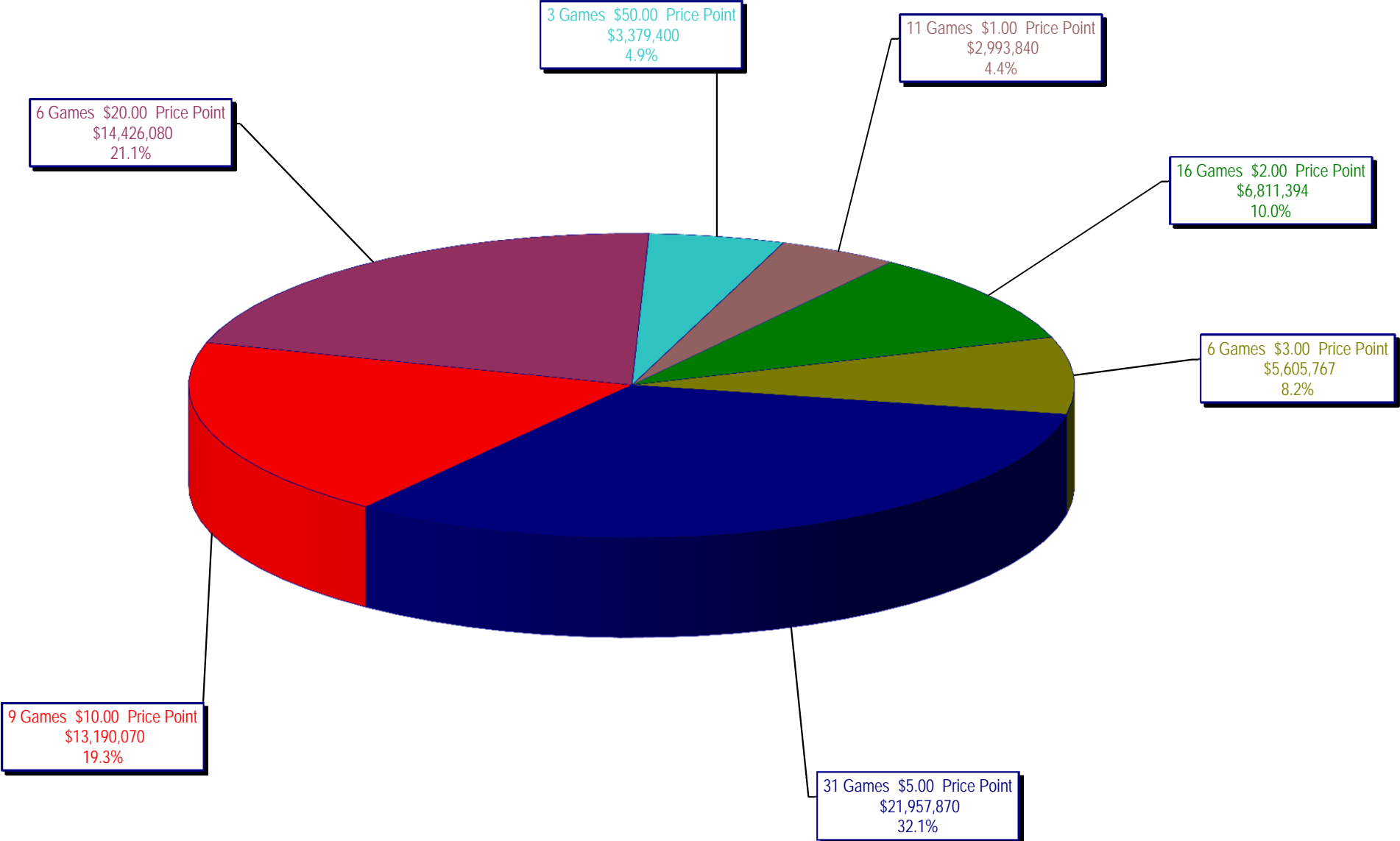
Draw Game Sales

	FY Sales Through Week Ending 11/21/2015	FY Prize Expense Through Week Ending 11/21/2015	Actual* Prize Payout	Base Payout (Prize Pool)
Lotto	\$ 29,147,761	\$ 20,485,496	70.28%	50.00%
Lotto Extra	4,900,508	2,454,586	50.09%	53.70%
Pick 3	56,697,237	28,231,660	49.79%	50.00%
Pick 3 Sum It Up	1,145,564	597,878	52.19%	50.00%
Cash Five	10,569,440	5,284,877	50.00%	50.00%
Texas Two Step	12,165,513	6,188,285	50.87%	50.00%
Mega Millions	29,621,462	15,284,180	51.60%	50.00%**
Megaplier	7,334,576	3,708,385	50.56%	N/A
Daily 4	19,329,025	8,942,800	46.27%	50.00%
Daily 4 Sum It Up	998,045	349,870	35.06%	50.00%
Powerball	46,405,286	23,418,989	50.47%	50.00%**
Power Play	6,031,848	3,043,893	50.46%	N/A
All or Nothing	7,177,352	3,849,372	53.63%	55.98%
Texas Triple Chance	5,891,705	3,768,349	63.96%	50.00%
Totals	\$ 237,415,321	\$ 125,608,620	52.91%	

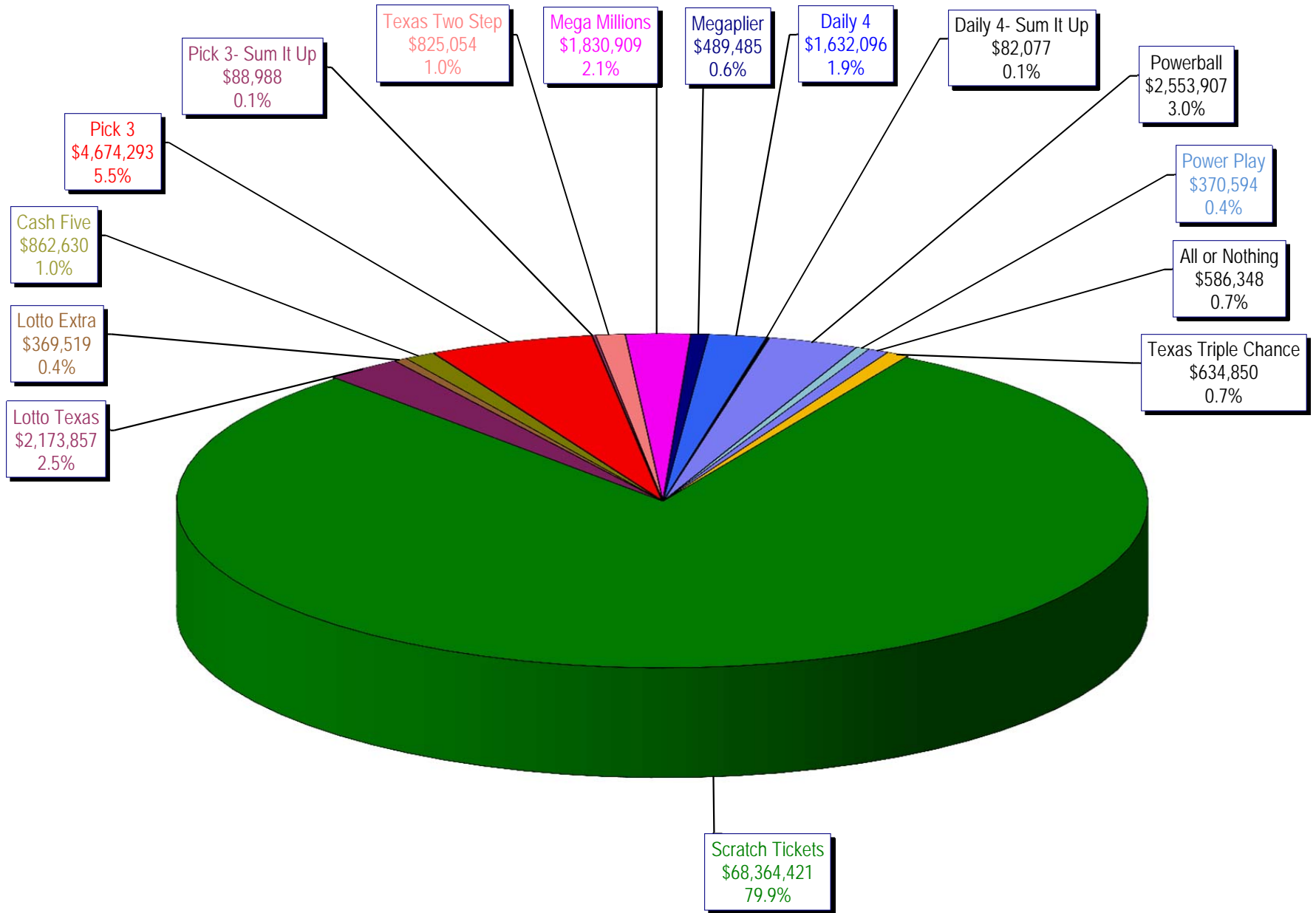
* Before Unclaimed Prizes

** Estimated; depends on # of guaranteed prizes won in Texas

Texas Lottery Commission
Scratch Ticket Sales
For the week ending 11/21/15
(Unaudited)



Texas Lottery Commission
All Game Sales
For the week ending 11/21/15
(Unaudited)



Texas Lottery Commission - Weekly Sales Summary for FY 2016 (Unaudited)

Week Ended	Scratch Tickets	New Games & Dates	Lotto Texas	Jackpot W	S	Lotto Extra	Pick 3	Pick 3 Sum It Up	Cash Five	Texas Two Step	Jackpot M	TH	Mega Millions	Jackpot T	F	Megaplier	Daily 4	Daily 4 Sum It Up	Powerball	Jackpot W	S	Power Play	All or Nothing	Monopoly	Jackpot F	Texas Triple Chance	Total	Per Cap.
9/5/2015*	66,843,870	0	2,788,509	25	26	466,121	5,249,348	117,979	956,126	1,253,100	425	575	2,366,640	74	85	608,901	1,725,027	93,067	3,586,482	120	133	484,769	675,614	0			87,215,551	3.24
9/12/2015	61,566,291	1717 (\$1.N); 1718 (\$5.N); 1748 (\$10.N); 1696 (\$3.N) - 9/08/15	2,793,426	26.5	27.75	465,451	4,974,238	103,203	919,536	1,423,604	725	950	2,511,039	95	106	629,091	1,641,226	86,539	3,927,126	149	167	518,060	638,384	0			82,197,213	3.05
9/19/2015	63,530,657	0	2,845,557	28.25	29.5	475,307	4,715,566	95,242	928,275	854,109	200	225	1,817,155	15	20	487,946	1,647,829	81,483	5,082,782	185	208	639,614	656,388	0			83,857,910	3.11
9/26/2015	61,731,400	1720 (\$2.N); 1721 (\$5.N); 1715 (\$5.N) - 9/21/15	2,815,638	30	30.75	468,584	4,735,629	97,118	924,334	1,048,752	300	450	1,860,438	25	31	499,201	1,628,350	82,200	6,648,092	235	267	790,427	653,528	0			83,983,690	3.12
10/3/2015	67,048,415	0	3,034,763	31.5	32.25	502,043	4,925,789	100,522	919,217	1,347,552	600	725	2,053,673	39	47	539,290	1,662,320	88,291	8,036,576	301	40	884,785	616,594	0		725,376	92,485,206	3.43
10/10/2015	66,049,706	1722 (\$1.N); 1723 (\$5.N); 1711 (\$20.N) - 10/05/15	2,175,801	5	5.25	366,506	4,803,855	97,005	899,614	1,141,865	925	200	2,113,720	55	65	535,411	1,636,542	86,150	2,572,748	50	60	372,480	593,616	0		743,664	84,188,683	3.12
10/17/2015	65,073,593	0	2,133,286	5	5	358,076	4,629,752	92,453	876,040	824,622	200	225	2,286,703	75	84	568,477	1,576,323	79,576	2,638,956	70	80	377,157	580,870	0		754,124	82,850,007	3.07
10/24/2015	64,087,437	1724 (\$2.N); 1768 (\$5.N); 1726 (\$10.N) - 10/19/15	2,099,176	5.25	5.5	358,217	4,515,381	92,071	860,960	991,931	300	425	2,600,946	93	105	626,019	1,553,788	80,225	2,946,077	90	100	411,192	562,378	0		752,104	82,537,901	3.06
10/31/2015	66,025,374	0	2,165,101	5.75	6	368,559	4,653,961	91,360	873,751	944,275	550	200	2,945,749	117	129	695,705	1,621,009	85,560	3,327,954	110	127	455,266	573,258	0		766,642	85,593,524	3.18
11/7/2015	68,137,192	1727 (\$1.N); 1728 (\$2.N); 1729 (\$5.N) - 11/02/15	2,232,267	6.25	6.5	379,508	4,977,693	96,887	891,111	911,796	225	300	3,416,380	144	164	795,028	1,688,298	86,418	3,071,581	142	40	425,312	599,980	0		826,093	88,535,543	3.28
11/14/2015	65,449,428	0	2,185,621	6.75	7	373,102	4,726,211	93,030	870,215	1,087,101	425	575	4,139,462	180	200	938,757	1,614,727	82,536	2,437,413	50	60	357,760	574,596	0		688,852	85,618,810	3.18
11/21/2015	68,364,421	1730 (\$2.N); 1783 (\$2.N); 1731 (\$5.N) - 11/16/15 1778 (\$2.N) - 11/18/15	2,173,857	7.25	7.5	369,519	4,674,293	88,988	862,630	825,054	200	225	1,830,909	15	20	489,485	1,632,096	82,077	2,553,907	70	80	370,594	586,348	0		634,850	85,539,027	3.17
weekly change	4.5%		-0.5%			-1.0%	-1.1%	-4.3%	-0.9%	-24.1%			-55.8%			-47.9%	1.1%	-0.6%	4.8%			3.6%	2.0%	0.0%			-7.8%	-0.1%
	SALES		SALES			SALES	SALES	SALES	SALES	SALES	SALES	SALES	SALES	SALES	SALES	SALES	SALES	SALES	SALES	SALES	SALES	SALES	SALES	SALES	SALES	SALES	SALES	% of Sales
Calendar Year to date	3,134,637,900		111,803,380			18,363,373	224,877,910	4,752,819	44,180,773	49,087,045			124,332,696			30,389,994	77,730,657	4,275,118	191,080,095			24,372,186	31,892,630	(390)		5,891,705	4,077,667,890	100.0%
Fiscal Year to date 2016	766,598,163		29,147,761			4,900,508	56,697,237	1,145,564	10,569,440	12,165,513			29,621,462			7,334,576	19,329,025	998,045	46,405,286			6,031,848	7,177,352	0		5,891,705	1,004,013,484	100.0%
*Full week includes 2 days from FY15																												