



WEEKLY SALES SUMMARY

Unaudited

Week Ending: 11/22/08

Texas Lottery Commission
Fiscal Year to Date Sales Comparison
Unaudited

Through the week ending 11/22/2008 (12 weeks)

Sales by Game	FY 2007 *	FY 2008 **	FY 2009	\$ Change		% Change	
				FY 2009 to FY 2007	FY 2009 to FY 2008	FY 2009 to FY 2007	FY 2009 to FY 2008
Instants	\$ 635,363,958	\$ 629,753,831	\$ 592,451,164	\$ -42,912,794	\$ -37,302,667	-6.8%	-5.9%
Lotto Texas	47,248,003	50,195,658	40,575,477	-6,672,526	-9,620,181	-14.1%	-19.2%
Pick 3	70,844,887	65,869,715	61,516,159	-9,328,728	-4,353,556	-13.2%	-6.6%
Pick 3 Sum It Up	-	427,500	1,316,532	1,316,532	889,032	-	-
Cash 5	20,423,570	18,154,629	15,959,008	-4,464,562	-2,195,621	-21.9%	-12.1%
Texas Two Step	13,880,300	9,953,607	10,691,270	-3,189,030	737,663	-23.0%	7.4%
Mega Millions	33,871,279	30,449,524	30,753,876	-3,117,404	304,352	-9.2%	1.0%
Megaplier	8,266,463	7,919,405	7,925,741	-340,722	6,336	-4.1%	0.1%
Daily 4	-	9,050,620	9,259,661	9,259,661	209,042	-	-
Daily 4 Sum It Up	-	2,647,116	1,229,982	1,229,982	-1,417,134	-	-
Total	\$ 829,898,460	\$ 824,421,605	\$ 771,678,869	\$ -58,219,591	\$ -52,742,736	-7.0%	-6.4%

* 3 extra days in 2007 ** 2 extra days in 2008

Texas Lottery Commission
Fiscal Year Over Year Change in Sales
Unaudited
FY 2009 Compared to FY 2008

Week	FY 2009 Week Ending	INSTANT TICKETS				ON-LINE GAMES				TOTAL SALES			
		FY 2009	FY 2008	Difference	% change - Cumulative Sales	FY 2009	FY 2008	Difference	% change - Cumulative Sales	FY 2009	FY 2008	Difference	% change - Cumulative Sales
1	9/6/2008**	\$44,890,104	\$62,376,229	(\$17,486,125)	-28.0%	\$14,722,011	\$19,372,224	(\$4,650,213)	-24.0%	\$59,612,115	\$81,748,453	(\$22,136,338)	-27.1%
2	9/13/2008	\$46,309,551	\$52,458,866	(\$6,149,315)	-20.6%	\$13,704,860	\$16,926,163	(\$3,221,303)	-21.7%	\$60,014,411	\$69,385,029	(\$9,370,618)	-20.8%
3	9/20/2008	\$42,923,171	\$49,998,934	(\$7,075,763)	-18.6%	\$12,291,263	\$15,792,283	(\$3,501,020)	-21.8%	\$55,214,434	\$65,791,217	(\$10,576,783)	-19.4%
4	9/27/2008	\$47,042,801	\$49,894,175	(\$2,851,374)	-15.6%	\$14,222,339	\$14,800,514	(\$578,175)	-17.9%	\$61,265,140	\$64,694,689	(\$3,429,549)	-16.2%
5	10/4/2008	\$50,747,162	\$53,486,863	(\$2,739,701)	-13.5%	\$15,784,472	\$16,618,430	(\$833,958)	-15.3%	\$66,531,634	\$70,105,293	(\$3,573,659)	-14.0%
6	10/11/2008	\$49,763,789	\$50,918,020	(\$1,154,231)	-11.7%	\$15,622,498	\$15,601,410	\$21,088	-12.9%	\$65,386,287	\$66,519,430	(\$1,133,143)	-12.0%
7	10/18/2008	\$49,299,053	\$50,532,253	(\$1,233,200)	-10.5%	\$15,167,940	\$15,682,666	(\$514,726)	-11.6%	\$64,466,993	\$66,214,919	(\$1,747,926)	-10.7%
8	10/25/2008	\$49,977,581	\$50,347,450	(\$369,869)	-9.3%	\$14,525,843	\$15,586,516	(\$1,060,673)	-11.0%	\$64,503,424	\$65,933,966	(\$1,430,542)	-9.7%
9	11/1/2008	\$50,346,542	\$53,953,733	(\$3,607,191)	-9.0%	\$14,838,845	\$16,775,983	(\$1,937,139)	-11.1%	\$65,185,387	\$70,729,716	(\$5,544,330)	-9.5%
10	11/8/2008	\$54,860,087	\$53,635,090	\$1,224,997	-7.9%	\$16,057,069	\$15,912,791	\$144,278	-9.9%	\$70,917,156	\$69,547,881	\$1,369,275	-8.3%
11	11/15/2008	\$53,484,812	\$51,254,401	\$2,230,411	-6.8%	\$15,829,819	\$15,797,076	\$32,744	-9.0%	\$69,314,631	\$67,051,477	\$2,263,155	-7.3%
12	11/22/2008	\$52,806,511	\$50,897,817	\$1,908,694	-5.9%	\$16,460,748	\$15,801,720	\$659,028	-7.9%	\$69,267,259	\$66,699,537	\$2,567,722	-6.4%
13	11/29/2008		\$53,913,115				\$17,055,505				\$70,968,620		
14	12/6/2008		\$55,702,697				\$17,900,717				\$73,603,414		
15	12/13/2008		\$53,703,516				\$17,820,841				\$71,524,357		
16	12/20/2008		\$57,592,769				\$17,436,233				\$75,029,002		
17	12/27/2008		\$57,696,003				\$14,743,680				\$72,439,683		
18	1/3/2009		\$57,935,952				\$15,704,450				\$73,640,402		
19	1/10/2009		\$55,360,542				\$15,691,540				\$71,052,082		
20	1/17/2009		\$54,920,166				\$16,259,669				\$71,179,835		
21	1/24/2009		\$54,439,890				\$16,691,724				\$71,131,614		
22	1/31/2009		\$57,464,382				\$17,968,227				\$75,432,609		
23	2/7/2009		\$60,715,019				\$20,097,338				\$80,812,357		
24	2/14/2009		\$57,093,143				\$22,179,908				\$79,273,051		
25	2/21/2009		\$57,627,047				\$27,230,539				\$84,857,586		
26	2/28/2009		\$55,591,667				\$17,016,118				\$72,607,785		
27	3/7/2009		\$56,837,481				\$16,690,193				\$73,527,674		
28	3/14/2009		\$54,587,112				\$16,448,165				\$71,035,277		
29	3/21/2009		\$53,098,937				\$16,639,184				\$69,738,121		
30	3/28/2009		\$53,933,689				\$17,698,625				\$71,632,314		
31	4/4/2009		\$57,598,982				\$17,665,411				\$75,264,393		
32	4/11/2009		\$53,954,185				\$15,860,784				\$69,814,969		
33	4/18/2009		\$53,946,736				\$16,452,676				\$70,399,412		
34	4/25/2009		\$51,533,006				\$16,873,949				\$68,406,955		
35	5/2/2009		\$53,250,568				\$18,202,103				\$71,452,671		
36	5/9/2009		\$54,060,849				\$18,422,562				\$72,483,411		
37	5/16/2009		\$54,010,641				\$20,728,360				\$74,739,001		
38	5/23/2009		\$50,377,032				\$15,461,384				\$65,838,416		
39	5/30/2009		\$49,545,080				\$15,175,370				\$64,720,450		
40	6/6/2009		\$53,702,986				\$15,982,166				\$69,685,152		

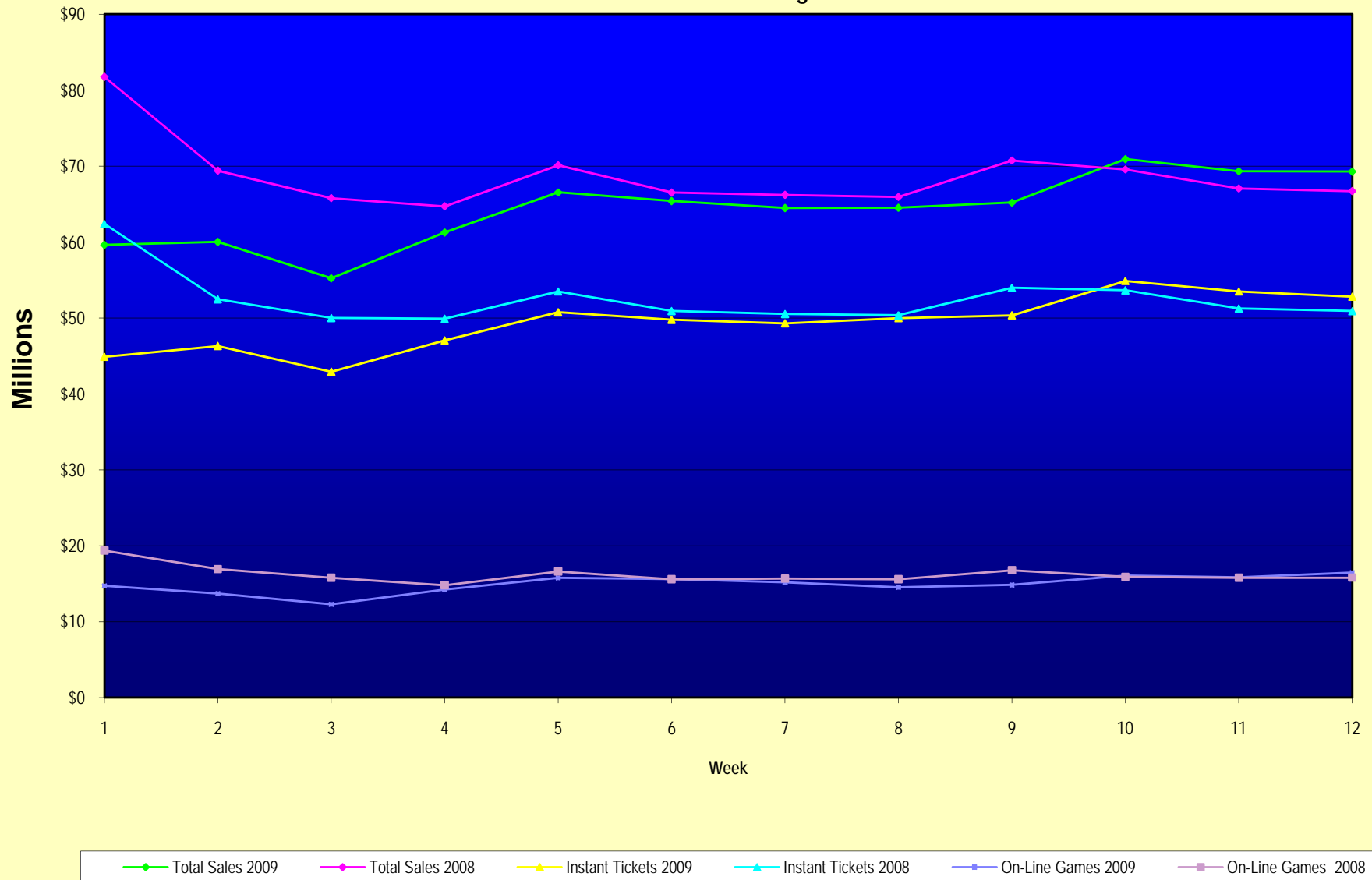
Note: Week 1 is not a full week of sales as this report is prepared on a Fiscal Year basis.

Texas Lottery Commission
Fiscal Year Over Year Change in Sales
Unaudited
FY 2009 Compared to FY 2008

Week	FY 2009 Week Ending	INSTANT TICKETS				ON-LINE GAMES				TOTAL SALES			
		FY 2009	FY 2008	Difference	% change - Cumulative Sales	FY 2009	FY 2008	Difference	% change - Cumulative Sales	FY 2009	FY 2008	Difference	% change - Cumulative Sales
41	6/13/2009		\$51,171,483				\$16,589,087				\$67,760,570		
42	6/20/2009		\$50,650,362				\$15,728,484				\$66,378,846		
43	6/27/2009		\$49,258,266				\$15,250,905				\$64,509,171		
44	7/4/2009		\$53,393,355				\$16,270,619				\$69,663,974		
45	7/11/2009		\$53,127,756				\$16,914,922				\$70,042,678		
46	7/18/2009		\$51,593,146				\$17,752,738				\$69,345,884		
47	7/25/2009		\$49,902,181				\$16,706,145				\$66,608,326		
48	8/1/2009		\$49,605,420				\$16,254,383				\$65,859,803		
49	8/8/2009		\$50,961,907				\$16,770,496				\$67,732,403		
50	8/15/2009		\$49,452,511				\$16,749,487				\$66,201,998		
51	8/22/2009		\$49,249,518				\$17,286,302				\$66,535,820		
52	8/29/2009		\$49,468,928				\$18,109,997				\$67,578,925		
53	9/5/2009		\$6,054,239				\$493,109				\$6,547,348		
Total thru Current Week		\$592,451,164	\$629,753,831	(\$37,302,667)	-5.9%	\$179,227,705	\$194,667,774	(\$15,440,069)	-7.9%	\$771,678,869	\$824,421,605	(\$52,742,736)	-6.4%
Fiscal Year Total		\$592,451,164	\$2,783,836,095			\$179,227,705	\$887,641,858			\$771,678,869	\$3,671,477,953		

** FY 2009 includes 6 days; FY 2008 includes 8 days
FY 2009 average daily sales are \$9,242,258. Two days at average daily sales are \$18,484,516.

Texas Lottery Commission Fiscal Year Over Year Change in Sales



Note: Week 1 is not a full week of sales as this report is prepared on a Fiscal Year basis.

Texas Lottery Commission
Instant Tickets by Price Point
Sales, Prize Expense, Sales Contribution and Payout Percentage With Year Over Year Changes
Unaudited

Fiscal Year	Price Point	# of Active Games	FY Sales	% of Instant Ticket Sales	Year over Year Change in Sales	FY Prize Expense	Year over Year Change in Prize Expense	FY Sales Contribution	Year over Year Change in Contribution	Average Prize Payout %	Year over Year Change in Payout %
2008	\$1.00	36	\$56,082,702	8.9%		\$33,709,716		\$22,372,986		60.1%	
thru	\$2.00	41	\$107,625,504	17.1%		\$69,972,030		\$37,653,474		65.0%	
11/24/2007	\$3.00	11	\$49,930,194	7.9%		\$32,913,622		\$17,016,572		65.9%	
	\$5.00	32	\$165,861,295	26.3%		\$112,397,171		\$53,464,124		67.8%	
	\$7.00	10	\$45,614,240	7.2%		\$31,007,282		\$14,606,958		68.0%	
	\$10.00	14	\$95,354,726	15.1%		\$66,751,652		\$28,603,074		70.0%	
	\$20.00	6	\$36,489,880	5.8%		\$26,244,354		\$10,245,526		71.9%	
	\$25.00	2	\$30,071,450	4.8%		\$21,829,545		\$8,241,905		72.6%	
	\$30.00	2	\$8,416,890	1.3%		\$6,083,898		\$2,332,992		72.3%	
	\$50.00	2	\$34,306,950	5.4%		\$24,743,689		\$9,563,261		72.1%	
Total		156	\$629,753,831			\$425,652,959		\$204,100,872		67.6%	
2009	\$1.00	32	\$50,204,803	8.5%		\$30,253,432		\$19,951,371		60.3%	0.3%
thru	\$2.00	27	\$103,750,008	17.5%		\$67,297,954		\$36,452,054		64.9%	-0.6%
11/22/2008	\$3.00	13	\$66,555,972	11.2%		\$43,744,265		\$22,811,707		65.7%	0.0%
	\$5.00	29	\$177,156,279	29.9%		\$120,489,725		\$56,666,554		68.0%	0.1%
	\$7.00	6	\$23,673,132	4.0%		\$16,104,293		\$7,568,839		68.0%	0.0%
	\$10.00	12	\$78,027,020	13.2%		\$54,610,731		\$23,416,289		70.0%	0.0%
	\$20.00	7	\$59,047,300	10.0%		\$42,379,756		\$16,667,544		71.8%	0.0%
	\$25.00	1	\$2,379,050	0.4%		\$1,730,391		\$648,659		72.7%	0.2%
	\$30.00	3	\$5,580,600	0.9%		\$4,045,187		\$1,535,413		72.5%	0.1%
	\$50.00	3	\$26,077,000	4.4%		\$18,858,920		\$7,218,080		72.3%	0.2%
Total		133	\$592,451,164			\$399,514,655		\$192,936,509		67.4%	-0.3%
Variance	\$1.00	-4	-\$5,877,899		-10.5%	-\$3,456,284	-10.3%	-\$2,421,615	-10.8%	0.15%	
2009 to	\$2.00	-14	-\$3,875,496		-3.6%	-\$2,674,076	-3.8%	-\$1,201,420	-3.2%	-0.15%	
2008	\$3.00	2	\$16,625,778		33.3%	\$10,830,642	32.9%	\$5,795,136	34.1%	-0.19%	
	\$5.00	-3	\$11,294,984		6.8%	\$8,092,555	7.2%	\$3,202,429	6.0%	0.25%	
	\$7.00	-4	-\$21,941,108		-48.1%	-\$14,902,989	-48.1%	-\$7,038,119	-48.2%	0.05%	
	\$10.00	-2	-\$17,327,706		-18.2%	-\$12,140,920	-18.2%	-\$5,186,786	-18.1%	-0.01%	
	\$20.00	1	\$22,557,420		61.8%	\$16,135,403	61.5%	\$6,422,017	62.7%	-0.15%	
	\$25.00	-1	-\$27,692,400		-92.1%	-\$20,099,154	-92.1%	-\$7,593,246	-92.1%	0.14%	
	\$30.00	1	-\$2,836,290		-33.7%	-\$2,038,711	-33.5%	-\$797,579	-34.2%	0.20%	
	\$50.00	1	-\$8,229,950		n/a	-\$5,884,769	n/a	-\$2,345,181	n/a	0.20%	
Total		-23	-\$37,302,667		-5.9%	-\$26,138,304	-6.1%	-\$11,164,363	-5.5%	-0.14%	

Texas Lottery Commission
Instant Tickets by Price Point
Sales, Prize Expense, Sales Contribution and Payout Percentage With Year Over Year Changes
Unaudited

Notes - Instant Ticket Variances

		FY 2009		FY 2008	Difference
Sales	\$1 - \$7	\$421,340,194		\$425,113,935	-\$3,773,741
Prize Exp.	\$1 - \$7	\$277,889,669		\$279,999,822	-\$2,110,153
Sales Cont.	\$1 - \$7	\$143,450,525		\$145,114,113	-\$1,663,588
Prize Exp. %	\$1 - \$7	66.0%		65.9%	0.1%
		FY 2009		FY 2008	Difference
Sales	\$10 - \$50	\$171,110,970		\$204,639,896	-\$33,528,926
Prize Exp.	\$10 - \$50	\$121,624,986		\$145,653,137	-\$24,028,152
Sales Cont.	\$10 - \$50	\$49,485,984		\$58,986,759	-\$9,500,774
Prize Exp. %	\$10 - \$50	71.1%		71.2%	-0.1%
		FY 2009		FY 2008	Difference
Sales	Instant	\$592,451,164		\$629,753,831	-\$37,302,667
Prize Exp.	Instant	\$399,514,655		\$425,652,959	-\$26,138,304
Sales Cont.	Instant	\$192,936,509		\$204,100,872	-\$11,164,363
Prize Exp. %	Instant	67.4%		67.6%	-0.2%

		FY 2009		FY 2008	Difference
Sales	\$1 - \$10	\$499,367,214		\$520,468,661	-\$21,101,447
Prize Exp.	\$1 - \$10	\$332,500,401		\$346,751,474	-\$14,251,073
Sales Cont.	\$1 - \$10	\$166,866,813		\$173,717,187	-\$6,850,374
Prize Exp. %	\$1 - \$10	66.6%		66.6%	0.0%
		FY 2009		FY 2008	Difference
Sales	\$20 - \$50	\$93,083,950		\$109,285,170	-\$16,201,220
Prize Exp.	\$20 - \$50	\$67,014,254		\$78,901,486	-\$11,887,231
Sales Cont.	\$20 - \$50	\$26,069,696		\$30,383,684	-\$4,313,989
Prize Exp. %	\$20 - \$50	72.0%		72.2%	-0.2%
		FY 2009		FY 2008	Difference
Sales	Instant	\$592,451,164		\$629,753,831	-\$37,302,667
Prize Exp.	Instant	\$399,514,655		\$425,652,959	-\$26,138,304
Sales Cont.	Instant	\$192,936,509		\$204,100,872	-\$11,164,363
Prize Exp. %	Instant	67.4%		67.6%	-0.2%

Texas Lottery Commission
Weekly Sales Summary
& Comparison to Previous Week
 Unaudited

	Week Ending 11/22/08		Week Ending 11/15/08			
	<u>THIS WEEK</u>	% of Sales	<u>LAST WEEK</u>	% of Sales	<u>\$ change</u>	<u>% change</u>
Total Sales	<u>\$69,267,259</u>		<u>\$69,314,631</u>		<u>-\$47,373</u>	-0.07%
Instant Tickets	<u>\$52,806,511</u>	76.2%	<u>\$53,484,812</u>	77.2%	<u>-\$678,301</u>	-1.27%
Lotto Texas	\$3,452,481	5.0%	\$3,336,934	4.8%	\$115,547	3.46%
Pick 3	\$5,329,591	7.7%	\$5,459,984	7.9%	-\$130,393	-2.39%
Pick 3 Sum It Up	\$108,862	0.2%	\$112,884	0.2%	-\$4,023	-3.56%
Cash 5	\$1,358,271	2.0%	\$1,366,024	2.0%	-\$7,753	-0.57%
Texas Two Step	\$743,950	1.1%	\$766,955	1.1%	-\$23,005	-3.00%
Mega Millions	\$3,666,517	5.3%	\$3,102,251	4.5%	\$564,266	18.19%
Megaplier	\$847,201	1.2%	\$749,736	1.1%	\$97,465	13.00%
Daily 4	\$849,078	1.2%	\$830,957	1.2%	\$18,121	2.18%
Daily 4 Sum It Up	<u>\$104,798</u>	0.2%	<u>\$104,094</u>	0.2%	<u>\$704</u>	0.68%
Total Online Sales	<u>\$16,460,748</u>		<u>\$15,829,819</u>		<u>\$630,929</u>	3.99%

* Totals may not sum due to rounding.

Texas Lottery Commission
Weekly Sales Summary
Unaudited

INSTANT TICKETS
TOP TEN SELLING GAMES

For the Week Ending : 11/22/08

Rank	Price Point	Game	Sales (Millions)
1	\$ 5	FANTASTIC 5'S	\$ 3.969
2	\$ 10	JINGLE JUNGLE BUCKS	\$ 3.441
3	\$ 5	MERRY MONEY	\$ 2.680
4	\$ 7	SIZZLIN' RED 7'S	\$ 2.590
5	\$ 20	TEXAS \$50 MILLION CLUB	\$ 2.193
6	\$ 3	BONUS CASHWORD	\$ 2.070
7	\$ 10	SET FOR LIFE	\$ 1.860
8	\$ 50	\$130,000,000 PLATINUM PAYOUT	\$ 1.726
9	\$ 2	SILVER BELLS	\$ 1.705
10	\$ 2	BREAK THE BANK	\$ 1.661

Texas Lottery Commission
Prize Payout Tracking Report
Unaudited

Through Week Ending 11/22/08

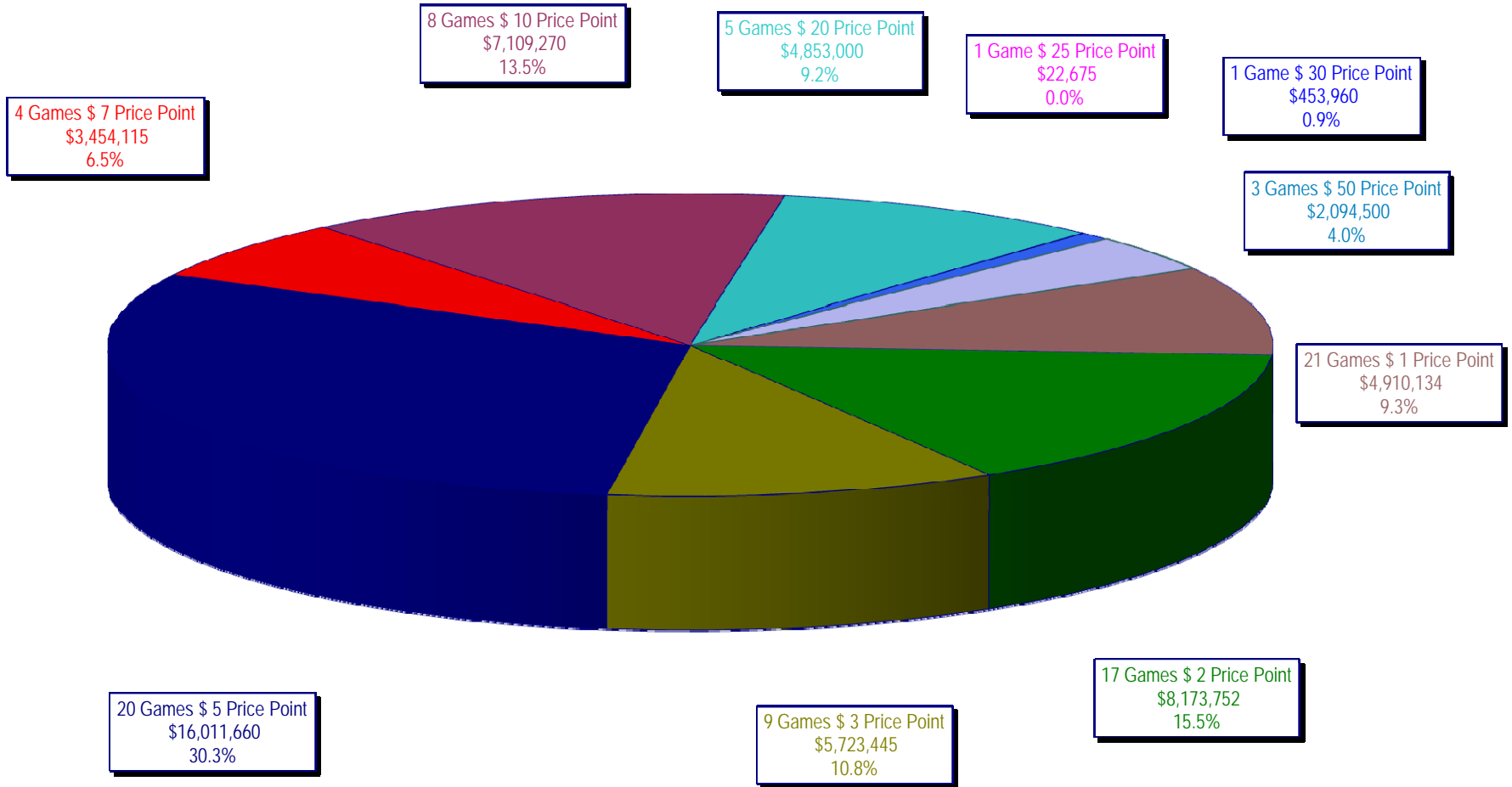
On-Line Sales

		FY Sales Through Week Ending 11/22/2008		FY Prize Expense Through Week Ending 11/22/2008	Actual* Prize Payout	Base Payout (Prize Pool)
Lotto	\$	40,575,477	\$	20,382,787	50.23%	50.00%
Pick 3		61,516,159		29,482,640	47.93%	50.00%
Pick 3 Sum It Up		1,316,532		569,031	43.22%	50.00%
Cash 5		15,959,008		8,072,958	50.59%	50.00%
Texas Two-Step		10,691,270		5,471,432	51.18%	50.00%
Mega Millions		30,753,876		14,532,136	47.25%	50.00%**
Megaplier		7,925,741		2,549,711	32.17%	N/A
Daily 4		9,259,661		4,198,050	45.34%	50.00%
Daily 4-Sum It Up		1,229,982		459,561	37.36%	50.00%
Totals	\$	179,227,705	\$	85,718,307	47.83%	

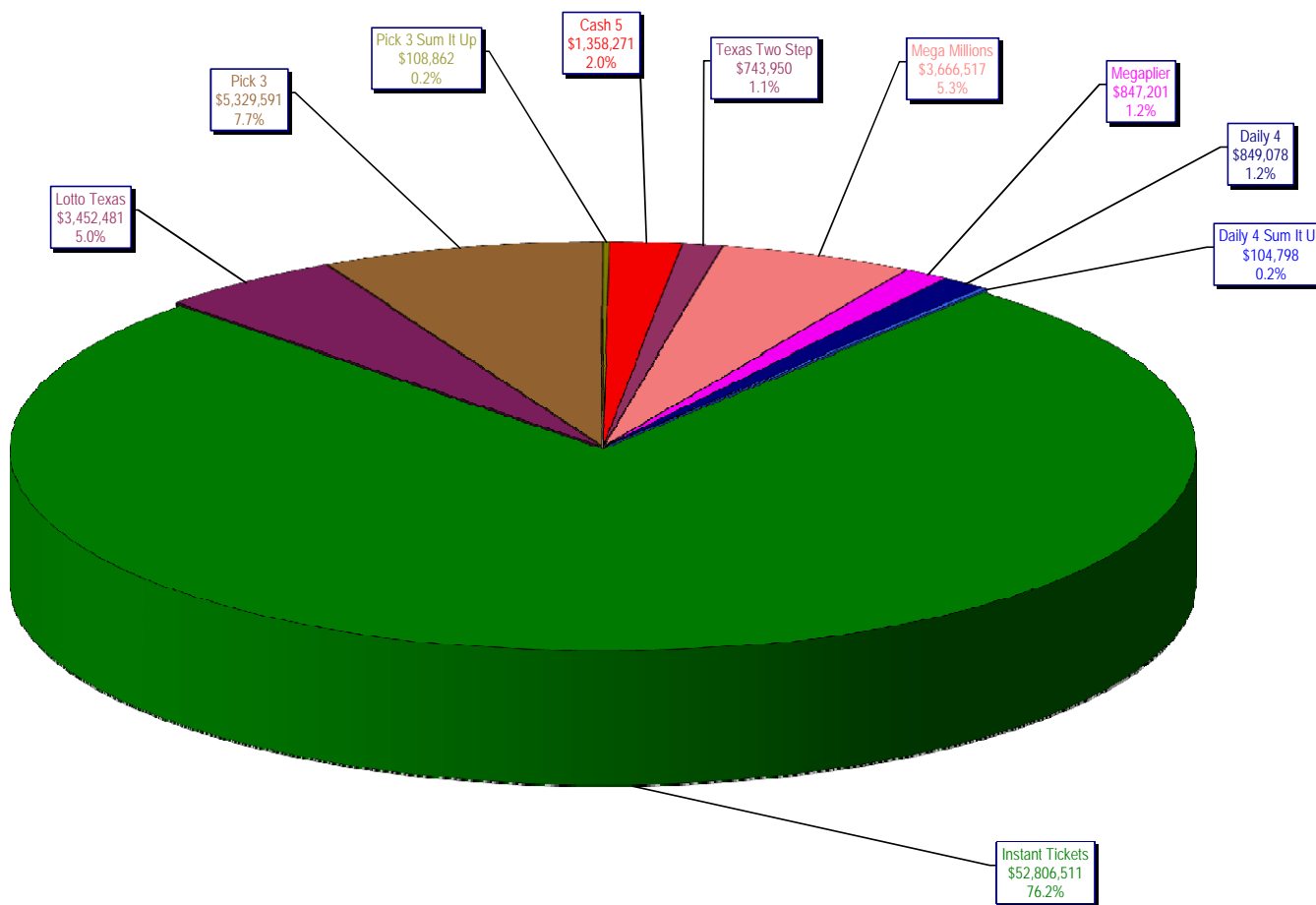
* Before Unclaimed Prizes

** Estimated; depends on # of guaranteed prizes won in Texas

Texas Lottery Commission
Instant Ticket Sales
For the Week Ending 11/22/2008
(Unaudited)



Texas Lottery Commission
All Game Sales
For the Week Ending 11/22/2008
(Unaudited)



* Totals may not sum due to rounding.

Texas Lottery Commission - Weekly Sales Summary for FY 2008 (Unaudited)

Week Ended	Instant Games	New Games & Dates	Lotto Texas	Jackpot		Pick 3	Pick 3 Sum It Up	Cash 5	Texas Two Step	Jackpot		Mega Millions	Jackpot		Megaplier	Daily 4	Daily 4 Sum It Up	Total	Per Cap.
				W	S					M/T	TH/F		T	F					
9/6/2008	50,944,343.00	1108 (\$2,N), 1088 (\$3, N) - 9/01/08	3,378,718.00	5	6	5,436,414.00	122,123.00	1,396,622.00	890,346.00	350	450	2,445,490.00	12	16	649,090.00	786,482.50	109,834.00	66,159,462.50	2.77
9/13/2008	46,309,551.00	1109 (\$1,N), 1098 (\$5, N) - 9/08/08	3,020,089.00	7	8	4,705,585.50	105,899.00	1,279,412.00	856,199.00	600	200	2,327,214.00	24	12	617,672.00	696,633.00	96,156.50	60,014,411.00	2.51
9/20/2008	42,923,171.00	0	3,054,093.00	9	10	4,121,734.50	90,718.00	1,155,350.00	637,792.00	225	250	1,978,127.00	15	12	540,225.00	627,210.00	86,013.50	55,214,434.00	2.31
9/27/2008	47,042,801.00	1111 (\$2,N), 1099 (\$5, N) - 9/22/08	3,427,671.00	11	12	4,821,563.00	103,189.50	1,288,062.00	834,307.00	275	425	2,322,862.00	16	24	617,085.00	709,741.50	97,858.00	61,265,140.00	2.56
10/4/2008	50,747,162.00	1113 (\$1,N) 9/29/08	3,675,683.00	13	14	5,305,711.00	116,332.50	1,369,040.00	1,074,874.00	525	650	2,671,927.00	32	42	693,845.00	770,782.50	106,277.00	66,531,634.00	2.78
10/11/2008	49,763,789.00	0	3,732,365.00	15	16	5,287,094.00	114,665.50	1,370,334.00	1,305,250.00	800	975	2,306,070.00	12	16	622,120.00	778,204.00	106,395.00	65,386,286.50	2.74
10/18/2008	49,299,053.00	1117 (\$3,N), 1118 (\$20,N) - 10/13/08	3,780,438.00	17	18	5,149,258.00	109,530.00	1,355,601.00	741,849.00	200	200	2,500,644.00	23	32	652,198.00	776,366.00	102,056.00	64,466,993.00	2.70
10/25/2008	49,977,581.00	1119 (\$1,N), 1120 (\$5, N) - 10/20/08	3,210,762.00	4	5	5,099,671.00	107,104.50	1,339,079.00	789,649.00	225	275	2,456,965.00	42	12	641,206.00	778,434.00	102,972.50	64,503,424.00	2.70
11/1/2008	50,346,542.00	1121 (\$2,N), 1122 (\$10,N) - 10/27/08	3,325,641.00	6	7	5,234,124.00	109,983.00	1,339,046.00	946,035.00	375	475	2,347,596.00	16	23	626,235.00	805,572.00	104,612.50	65,185,386.50	2.73
11/8/2008	54,860,087.00	1123 (\$3,N), 1124 (\$7,N) - 11/03/08; 1109 (\$3,N) - 11/05/08; 1063 (\$3,N) - 11/07/08	3,290,417.00	4	5	5,686,701.00	118,495.00	1,397,985.00	1,158,101.00	625	750	2,729,302.50	31	42	692,662.00	871,230.00	112,175.50	70,917,156.00	2.97
11/15/2008	53,484,812.00	1125 (\$1, N), 1126 (\$5,N) - 11/10/08	3,336,934.00	6	7	5,459,984.00	112,884.00	1,366,024.00	766,955.00	200	225	3,102,251.00	51	62	749,736.00	830,957.00	104,094.00	69,314,631.00	2.90
11/22/2008	52,806,511.00	0	3,452,481.00	8	9	5,329,591.00	108,861.50	1,358,271.00	743,950.00	200	200	3,666,517.00	73	86	847,201.00	849,077.50	104,797.50	69,267,258.50	2.90
weekly change	-1.27%		3.46%			-2.39%	-3.56%	-0.57%	-3.00%			18.19%			13.00%	2.18%	0.68%		-0.07%
SALES																			
Startup to date	34,073,037,166.00		10,319,672,524.00			3,360,235,111.50	7,802,361.50	2,135,115,018.00	436,956,988.00			956,892,470.50			226,133,775.00	51,476,632.50	9,568,785.50	51,785,024,804.50	100.0%
Calendar Year to date	2,451,831,564.00		174,758,062.00			254,774,361.00	6,388,758.50	65,989,487.00	44,555,148.00			156,373,171.50			37,185,122.00	38,101,217.00	5,987,496.00	3,235,944,387.00	100.0%
Fiscal Year to date 2009	592,451,164.00		40,575,477.00			61,516,159.00	1,316,531.50	15,959,008.00	10,691,270.00			30,753,875.50			7,925,741.00	9,259,661.00	1,229,982.00	771,678,869.00	100.0%