



WEEKLY SALES SUMMARY

Unaudited

[Week Ending: 11/23/2013](#)

Texas Lottery Commission
Fiscal Year to Date Sales Comparison
Unaudited

Through the Week Ending 11/23/2013 (12 Weeks)

Sales by Game	FY 2012 *	FY 2013 **	FY 2014	\$ Change		% Change	
				FY 2014 to FY 2012	FY 2014 to FY 2013	FY 2014 to FY 2012	FY 2014 to FY 2013
Instants	\$ 657,960,897	\$ 693,920,672	\$ 722,398,855	\$ 64,437,958	\$ 28,478,183	9.8%	4.1%
Lotto Texas	41,937,189	37,597,701	30,942,934	-10,994,255	-6,654,767	-26.2%	-17.7%
Lotto Extra	-	-	3,907,267	3,907,267	3,907,267	-	-
Pick 3	62,463,073	61,686,568	57,941,879	-4,521,195	-3,744,690	-7.2%	-6.1%
Pick 3 Sum It Up	1,267,493	1,158,355	1,148,139	-119,355	-10,216	-9.4%	-0.9%
Cash Five	15,233,008	13,251,851	12,129,144	-3,103,864	-1,122,707	-20.4%	-8.5%
Texas Two Step	15,037,730	12,205,400	13,055,140	-1,982,590	849,740	-13.2%	7.0%
Mega Millions	32,569,410	25,284,403	32,387,133	-182,277	7,102,730	-0.6%	28.1%
Megaplier	7,457,648	5,855,816	7,159,433	-298,215	1,303,617	-4.0%	22.3%
Daily 4	14,601,435	16,178,720	19,079,262	4,477,827	2,900,542	30.7%	17.9%
Daily 4 Sum It Up	1,097,247	1,093,564	1,180,257	83,010	86,694	7.6%	7.9%
Powerball	31,558,861	49,150,897	57,203,015	25,644,154	8,052,118	81.3%	16.4%
Power Play	6,796,908	5,767,043	6,540,956	-255,952	773,913	-3.8%	13.4%
All or Nothing	-	23,059,839	11,086,416	11,086,416	-11,973,423	-	-51.9%
Total	\$ 887,980,899	\$ 946,210,828	\$ 976,159,829	\$ 88,178,930	\$ 29,949,001	9.9%	3.2%

* 3 extra days

** 1 extra day

Texas Lottery Commission
Fiscal Year to Date Cumulative Average Sales Comparison
Unaudited

Through the Week Ending 11/23/2013 (12 Weeks)

Sales by Game	FY 2012	FY 2013	FY 2014
Instants	\$ 7,562,769	\$ 8,163,773	\$ 8,599,986
Lotto Texas	482,037	442,326	368,368
Lotto Extra	-	-	46,515
Pick 3	717,966	725,724	689,784
Pick 3 Sum It Up	14,569	13,628	13,668
Cash Five	175,092	155,904	144,395
Texas Two Step	172,847	143,593	155,418
Mega Millions	374,361	297,464	385,561
Megaplier	85,720	68,892	85,231
Daily 4	167,833	190,338	227,134
Daily 4 Sum It Up	12,612	12,865	14,051
Powerball	362,746	578,246	680,988
Power Play	78,125	67,848	77,869
All or Nothing	- *	299,478	131,981
	<hr/>	<hr/>	<hr/>
Total	\$ 10,206,677	\$ 11,160,078	\$ 11,620,950
	<hr/> <hr/>	<hr/> <hr/>	<hr/> <hr/>

thru 11/26/2011
87 days

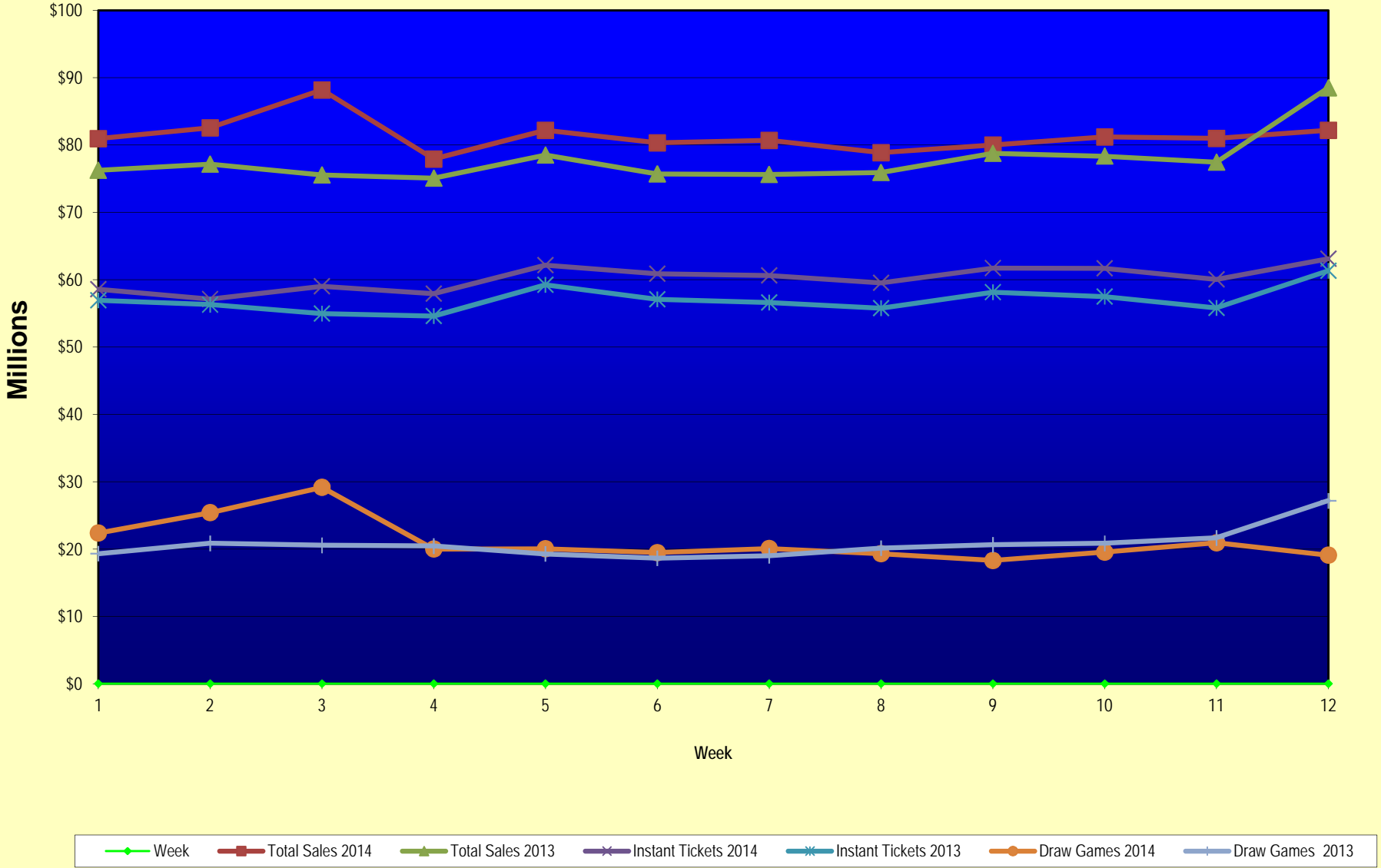
thru 11/24/2012
85 days
*
77 days

thru 11/23/2013
84 days

Texas Lottery Commission
Fiscal Year Over Year Change in Sales
Unaudited
FY 2014 Compared to FY 2013

			INSTANT TICKETS				DRAW GAMES				TOTAL SALES			
FY 2014			FY 2014	FY 2013	Difference	% change - Cumulative Sales	FY 2014	FY 2013	Difference	% change - Cumulative Sales	FY 2014	FY 2013	Difference	% change - Cumulative Sales
Week	Week Ending													
0	9/1/2013 *		\$0	\$9,611,328	(\$9,611,328)	-100.0%	\$0	\$3,712,535	(\$3,712,535)	-100.0%	\$0	\$13,323,863	(\$13,323,863)	-100.0%
1	9/7/2013		\$58,587,757	\$56,941,761	\$1,645,996	2.9%	\$22,369,499	\$19,305,417	\$3,064,082	15.9%	\$80,957,256	\$76,247,178	\$4,710,078	6.2%
2	9/14/2013		\$57,135,931	\$56,302,875	\$833,056	1.5%	\$25,412,980	\$20,857,230	\$4,555,750	21.8%	\$82,548,911	\$77,160,105	\$5,388,806	7.0%
3	9/21/2013		\$59,018,194	\$54,974,438	\$4,043,756	7.4%	\$29,161,241	\$20,570,277	\$8,590,964	41.8%	\$88,179,435	\$75,544,715	\$12,634,720	16.7%
4	9/28/2013		\$57,927,984	\$54,606,674	\$3,321,310	6.1%	\$20,012,313	\$20,462,690	(\$450,378)	-2.2%	\$77,940,297	\$75,069,364	\$2,870,933	3.8%
5	10/5/2013		\$62,146,816	\$59,223,327	\$2,923,489	4.9%	\$20,043,557	\$19,279,973	\$763,584	4.0%	\$82,190,373	\$78,503,300	\$3,687,073	4.7%
6	10/12/2013		\$60,867,582	\$57,075,606	\$3,791,976	6.6%	\$19,480,962	\$18,638,467	\$842,496	4.5%	\$80,348,544	\$75,714,073	\$4,634,472	6.1%
7	10/19/2013		\$60,612,193	\$56,630,134	\$3,982,059	7.0%	\$20,079,610	\$18,998,943	\$1,080,668	5.7%	\$80,691,803	\$75,629,077	\$5,062,727	6.7%
8	10/26/2013		\$59,548,277	\$55,789,743	\$3,758,534	6.7%	\$19,319,928	\$20,130,190	(\$810,262)	-4.0%	\$78,868,205	\$75,919,933	\$2,948,273	3.9%
9	11/2/2013		\$61,710,236	\$58,142,777	\$3,567,459	6.1%	\$18,308,976	\$20,638,008	(\$2,329,032)	-11.3%	\$80,019,212	\$78,780,785	\$1,238,427	1.6%
10	11/9/2013		\$61,668,594	\$57,484,804	\$4,183,790	7.3%	\$19,555,070	\$20,862,872	(\$1,307,802)	-6.3%	\$81,223,664	\$78,347,676	\$2,875,988	3.7%
11	11/16/2013		\$60,057,025	\$55,805,228	\$4,251,797	7.6%	\$20,930,071	\$21,660,705	(\$730,634)	-3.4%	\$80,987,096	\$77,465,933	\$3,521,163	4.5%
12	11/23/2013		\$63,118,266	\$61,331,977	\$1,786,289	2.9%	\$19,086,770	\$27,172,853	(\$8,086,083)	-29.8%	\$82,205,036	\$88,504,830	(\$6,299,794)	-7.1%
13	11/30/2013			\$58,420,598				\$62,797,943				\$121,218,541		
14	12/7/2013			\$62,489,745				\$19,630,155				\$82,119,900		
15	12/14/2013			\$59,661,880				\$20,064,982				\$79,726,862		
16	12/21/2013			\$63,556,886				\$19,084,653				\$82,641,539		
17	12/28/2013			\$63,547,886				\$17,359,874				\$80,907,760		
18	1/4/2014			\$60,452,721				\$18,833,047				\$79,285,768		
19	1/11/2014			\$58,862,997				\$18,879,167				\$77,742,164		
20	1/18/2014			\$58,494,057				\$19,258,004				\$77,752,061		
21	1/25/2014			\$57,871,744				\$20,093,215				\$77,964,959		
22	2/1/2014			\$61,846,715				\$21,032,335				\$82,879,050		
23	2/8/2014			\$70,374,906				\$21,183,638				\$91,558,544		
24	2/15/2014			\$71,002,438				\$19,295,197				\$90,297,635		
25	2/22/2014			\$71,203,934				\$19,729,989				\$90,933,923		
26	3/1/2014			\$74,551,567				\$20,278,327				\$94,829,894		
27	3/8/2014			\$75,360,138				\$21,447,763				\$96,807,901		
28	3/15/2014			\$70,065,528				\$22,055,563				\$92,121,091		
29	3/22/2014			\$70,137,284				\$28,709,024				\$98,846,308		
30	3/29/2014			\$68,758,522				\$18,597,091				\$87,355,613		
31	4/5/2014			\$73,270,054				\$20,048,992				\$93,319,046		
32	4/12/2014			\$64,738,900				\$19,697,793				\$84,436,693		
33	4/19/2014			\$63,252,072				\$20,245,083				\$83,497,155		
34	4/26/2014			\$62,766,647				\$21,162,888				\$83,929,535		
35	5/3/2014			\$66,251,082				\$23,628,101				\$89,879,183		
36	5/10/2014			\$65,748,723				\$26,735,480				\$92,484,203		
37	5/17/2014			\$63,348,463				\$61,124,604				\$124,473,067		
38	5/24/2014			\$60,537,133				\$18,730,138				\$79,267,271		
39	5/31/2014			\$58,547,555				\$18,317,891				\$76,865,446		
40	6/7/2014			\$62,113,508				\$18,374,935				\$80,488,443		

Texas Lottery Commission Fiscal Year Over Year Change in Sales



Note: Week 1 is not a full week of sales as this report is prepared on a Fiscal Year basis.

Texas Lottery Commission
Instant Tickets by Price Point
Sales, Prize Expense, Sales Contribution and Payout Percentage With Year Over Year Changes
Unaudited

Fiscal Year	Price Point	# of Active Games	FY Sales	% of Instant Ticket Sales	Year over Year Change in Sales	FY Prize Expense	Year over Year Change in Prize Expense	FY Sales Contribution	Year over Year Change in Contribution	Average Prize Payout %	Year over Year Change in Payout %
2013	\$1.00	24	41,145,228	5.9%		25,108,758		16,036,470		61.0%	0.7%
thru	\$2.00	26	88,146,288	12.7%		57,308,766		30,837,522		65.0%	-0.1%
11/24/2012	\$3.00	14	90,806,667	13.1%		59,559,106		31,247,561		65.6%	0.1%
	\$5.00	40	210,748,040	30.4%		143,070,854		67,677,186		67.9%	-0.2%
	\$7.00	2	12,363,169	1.8%		8,402,829		3,960,340		68.0%	0.0%
	\$10.00	11	117,164,830	16.9%		82,797,512		34,367,318		70.7%	-0.3%
	\$20.00	7	105,539,300	15.2%		78,998,465		26,540,835		74.9%	0.1%
	\$50.00	3	28,007,150	4.0%		21,745,916		6,261,234		77.6%	0.0%
Total		127	\$693,920,672			\$476,992,206		\$216,928,466		68.7%	0.2%
2014	\$1.00	21	42,034,010	5.8%		25,190,897		16,843,113		59.9%	-1.3%
thru	\$2.00	27	86,794,792	12.0%		56,361,159		30,433,633		64.9%	-0.1%
11/23/2013	\$3.00	14	78,591,273	10.9%		51,447,601		27,143,672		65.5%	-0.1%
	\$5.00	36	237,028,150	32.8%		161,016,292		76,011,858		67.9%	-0.1%
	\$7.00	0	0	0.0%		0		-		0.0%	0.0%
	\$10.00	12	135,022,370	18.7%		95,366,612		39,655,758		70.6%	-0.6%
	\$20.00	8	115,385,960	16.0%		86,405,438		28,980,522		74.9%	0.0%
	\$50.00	2	27,542,300	3.8%		21,382,444		6,159,856		77.6%	0.0%
Total		120	\$722,398,855			\$497,170,444		\$225,228,411		68.8%	-0.2%
Variance	\$1.00	-3	888,782		2.2%	82,139	0.3%	806,643	5.0%	-1.09%	
2014 to	\$2.00	1	-1,351,496		-1.5%	-947,607	-1.7%	-403,889	-1.3%	-0.08%	
2013	\$3.00	0	-12,215,394		-13.5%	-8,111,505	-13.6%	-4,103,889	-13.1%	-0.13%	
	\$5.00	-4	26,280,110		12.5%	17,945,438	12.5%	8,334,672	12.3%	0.04%	
	\$7.00	-2	-12,363,169		-100.0%	-8,402,829	-100.0%	-3,960,340	-100.0%	-67.97%	
	\$10.00	1	17,857,540		15.2%	12,569,100	15.2%	5,288,440	15.4%	-0.04%	
	\$20.00	1	9,846,660		9.3%	7,406,973	9.4%	2,439,687	9.2%	0.03%	
	\$50.00	-1	-464,850		-1.7%	-363,472	-1.7%	-101,378	-1.6%	-0.01%	
Total		-7	\$28,478,183		4.1%	\$20,178,238	4.2%	\$8,299,945	3.8%	0.10%	

Notes - Instant Ticket Variances

Texas Lottery Commission
Instant Tickets by Price Point
Sales, Prize Expense, Sales Contribution and Payout Percentage With Year Over Year Changes
 Unaudited

			FY 2014		FY 2013	Difference
Sales	\$1 - \$7	1	\$444,448,225		\$443,209,392	\$1,238,833
Prize Exp.	\$1 - \$7	1	\$294,015,950		\$293,450,314	\$565,637
Sales Cont.	\$1 - \$7	1	\$150,432,275		\$149,759,078	\$673,196
Prize Exp. %	\$1 - \$7	1	66.2%		66.2%	-0.1%
			FY 2014		FY 2013	Difference
Sales	\$10 - \$50	2	\$277,950,630		\$250,711,280	\$27,239,350
Prize Exp.	\$10 - \$50	2	\$203,154,494		\$183,541,892	\$19,612,601
Sales Cont.	\$10 - \$50	1	\$74,796,136		\$67,169,388	\$7,626,749
Prize Exp. %	\$10 - \$50	2	73.1%		73.2%	-0.1%
			FY 2014		FY 2013	Difference
Sales	Instant		\$722,398,855		\$693,920,672	\$28,478,183
Prize Exp.	Instant		\$497,170,444		\$476,992,206	\$20,178,238
Sales Cont.	Instant		\$225,228,411		\$216,928,466	\$8,299,945
Prize Exp. %	Instant		68.8%		68.7%	0.1%

			FY 2014		FY 2013	Difference
Sales	\$1 - \$10		\$579,470,595		\$560,374,222	\$19,096,373
Prize Exp.	\$1 - \$10		\$389,382,562		\$376,247,825	\$13,134,737
Sales Cont.	\$1 - \$10		\$190,088,033		\$184,126,397	\$5,961,636
Prize Exp. %	\$1 - \$10		67.2%		67.1%	0.1%
			FY 2014		FY 2013	Difference
Sales	\$20 - \$50		\$142,928,260		\$133,546,450	\$9,381,810
Prize Exp.	\$20 - \$50		\$107,787,882		\$100,744,381	\$7,043,501
Sales Cont.	\$20 - \$50		\$35,140,378		\$32,802,069	\$2,338,309
Prize Exp. %	\$20 - \$50		75.4%		75.4%	0.0%
			FY 2014		FY 2013	Difference
Sales	Instant		\$722,398,855		\$693,920,672	\$28,478,183
Prize Exp.	Instant		\$497,170,444		\$476,992,206	\$20,178,238
Sales Cont.	Instant		\$225,228,411		\$216,928,466	\$8,299,945
Prize Exp. %	Instant		68.8%		68.7%	0.1%

Texas Lottery Commission
Weekly Sales Summary
& Comparison to Previous Week
 Unaudited

	Week Ending 11/23/2013	% of Sales	Week Ending 11/16/2013	% of Sales	\$ change	% change
	<u>THIS WEEK</u>		<u>LAST WEEK</u>			
Total Sales	<u>\$82,205,036</u>		<u>\$80,987,096</u>		<u>\$1,217,940</u>	1.50%
Instant Tickets	<u>\$63,118,266</u>	76.8%	<u>\$60,057,025</u>	74.2%	<u>\$3,061,241</u>	5.10%
Lotto	\$2,325,678	2.8%	\$2,449,602	3.0%	-\$123,924	-5.06%
Lotto Extra	\$307,020	0.4%	\$316,977	0.4%	-\$9,957	-3.14%
Pick 3	\$4,702,460	5.7%	\$4,845,025	6.0%	-\$142,565	-2.94%
Pick 3 Sum It Up	\$91,204	0.1%	\$95,215	0.1%	-\$4,011	-4.21%
Cash Five	\$1,007,524	1.2%	\$1,003,854	1.2%	\$3,670	0.37%
Texas Two Step	\$839,877	1.0%	\$1,690,863	2.1%	-\$850,986	-50.33%
Mega Millions	\$3,473,057	4.2%	\$2,988,792	3.7%	\$484,265	16.20%
Megaplier	\$764,548	0.9%	\$652,956	0.8%	\$111,592	17.09%
Daily 4	\$1,628,437	2.0%	\$1,660,309	2.1%	-\$31,872	-1.92%
Daily 4 Sum It Up	\$98,799	0.1%	\$102,225	0.1%	-\$3,426	-3.35%
Powerball	\$2,637,760	3.2%	\$3,786,446	4.7%	-\$1,148,686	-30.34%
Power Play	\$349,338	0.4%	\$477,532	0.6%	-\$128,194	-26.85%
All or Nothing	\$861,068	1.0%	\$860,276	1.1%	\$792	0.09%
Total Draw Game Sales	<u>\$19,086,770</u>		<u>\$20,930,071</u>		<u>-\$1,843,301</u>	-8.81%

* Totals may not sum due to rounding.

Texas Lottery Commission
Weekly Sales Summary
Unaudited

INSTANT TICKETS
TOP TEN SELLING GAMES

For the Week Ending: 11/23/13

Rank	Price Point	Game	Sales (Millions)
1	\$ 10	GIFTS GALORE	\$ 3.418
2	\$ 20	HOLIDAY MILLIONS	\$ 3.400
3	\$ 10	SUPER WEEKLY GRAND	\$ 2.752
4	\$ 5	CASH MACHINE	\$ 2.541
5	\$ 5	TRIM THE TREE	\$ 2.437
6	\$ 10	BIG WINNING NUMBERS	\$ 2.251
7	\$ 5	BONUS WEEKLY GRAND	\$ 2.194
8	\$ 5	MERRY MONEY	\$ 2.156
9	\$ 20	\$1,000,000 JACKPOT	\$ 2.046
10	\$ 20	20X CASH	\$ 2.021

Texas Lottery Commission
Prize Payout Tracking Report
Unaudited

Through the Week Ending 11/23/13

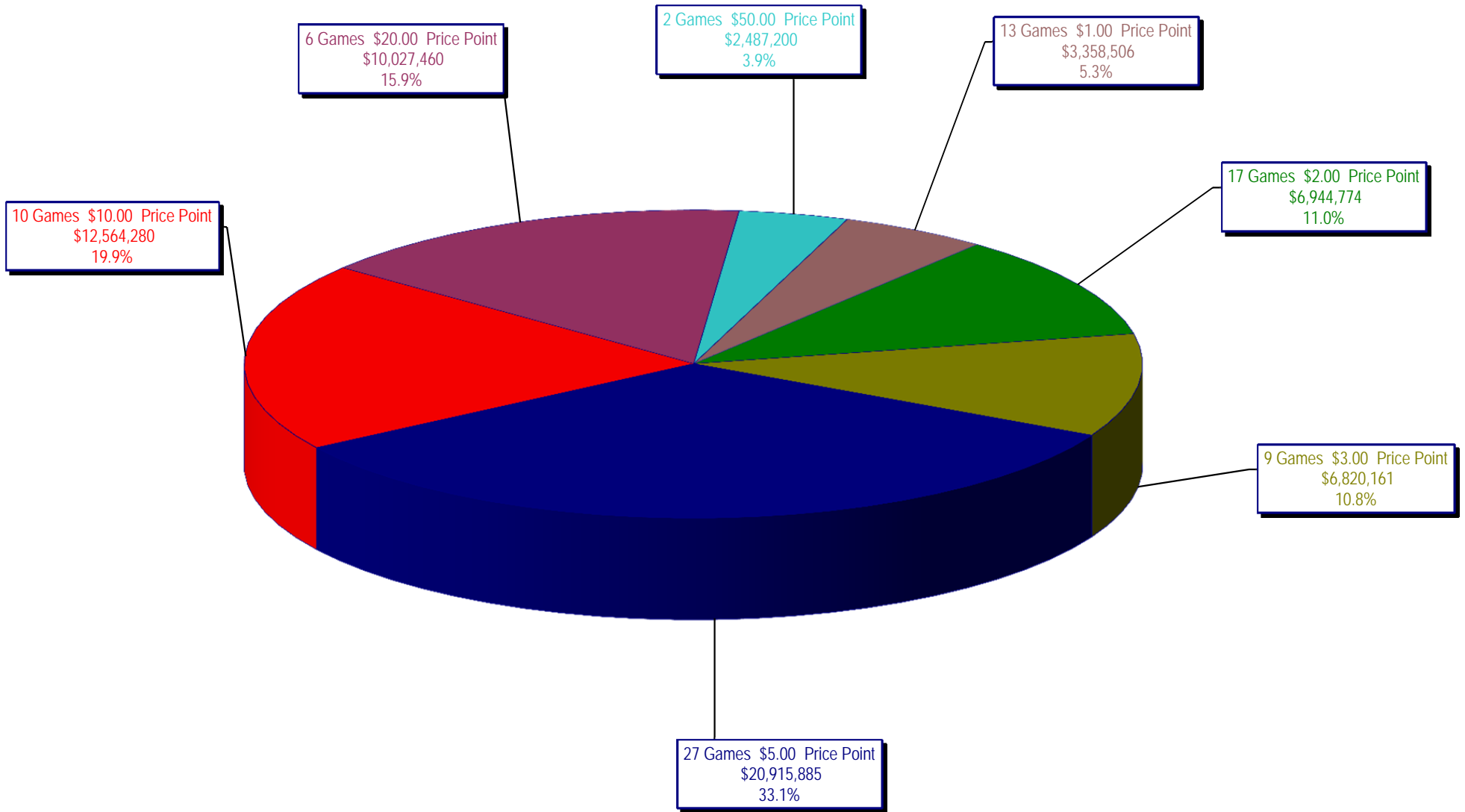
Draw Game Sales

		FY Sales Through Week Ending 11/23/2013		FY Prize Expense Through Week Ending 11/23/2013	Actual* Prize Payout	Base Payout (Prize Pool)
Lotto	\$	30,942,934	\$	16,641,414	53.78%	54.00%
Lotto Extra		3,907,267		2,104,956	53.87%	53.70%
Pick 3		57,941,879		28,974,780	50.01%	50.00%
Pick 3 Sum It Up		1,148,139		519,170	45.22%	50.00%
Cash Five		12,129,144		6,064,632	50.00%	50.00%
Texas Two Step		13,055,140		6,808,503	52.15%	50.00%
Mega Millions		32,387,133		16,323,567	50.40%	50.00%**
Megaplier		7,159,433		3,255,239	45.47%	N/A
Daily 4		19,079,262		10,564,050	55.37%	50.00%
Daily 4 Sum It Up		1,180,257		1,002,916	84.97%	50.00%
Powerball		57,203,015		27,657,262	48.35%	50.00%**
Power Play		6,540,956		2,373,161	36.28%	N/A
All or Nothing		11,086,416		5,799,256	52.31%	55.98%
Totals	\$	253,760,974	\$	128,088,906	50.48%	

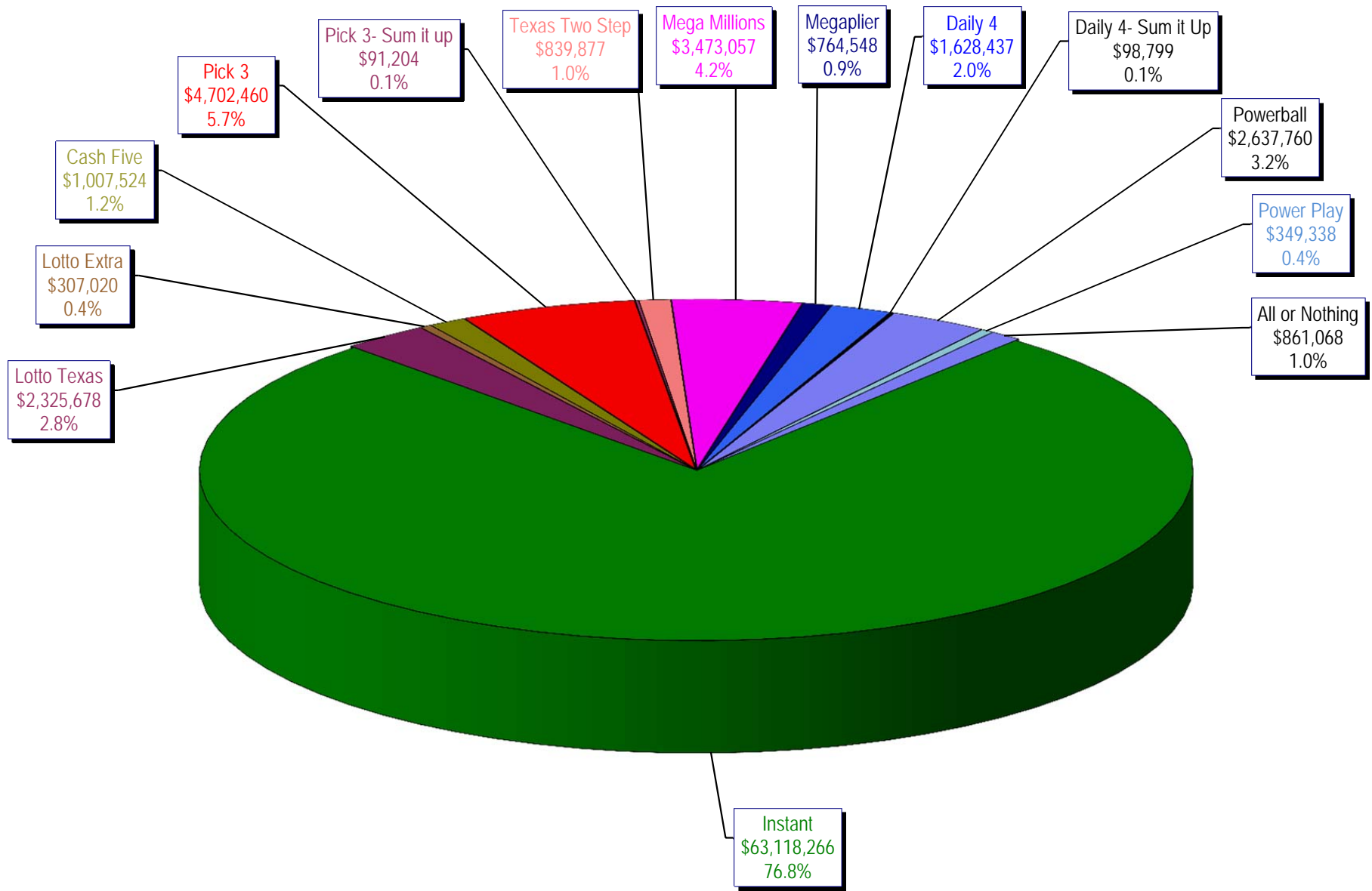
* Before Unclaimed Prizes

** Estimated; depends on # of guaranteed prizes won in Texas

Texas Lottery Commission
Instant Ticket Sales
For the Week Ending 11/23/13
(Unaudited)



Texas Lottery Commission
All Game Sales
For the Week Ending 11/23/13
(Unaudited)



Texas Lottery Commission - Weekly Sales Summary for FY 2014 (Unaudited)

Week Ended	Instant Games	New Games & Dates	Lotto Texas	Jackpot		Lotto Extra	Pick 3	Pick 3 Sum It Up	Cash Five	Texas Two Step	Jackpot		Mega Millions	Jackpot		Megaplier	Daily 4	Daily 4 Sum It Up	Powerball	Jackpot		Power Play	All or Nothing	Total	Per Cap.
				W	S						M	TH		T	F					W	S				
9/7/2013	58,587,757	0	2,677,829	8	9	329,933	4,945,500	89,456	1,036,149	1,417,992	600	775	2,409,195	85	95	540,148	1,453,721	84,220	5,730,736	169	203	650,070	1,004,550	80,957,256	3.11
9/14/2013	57,135,931	1554 (\$1.N); 1555 (\$2.N); 1556 (\$5.N); 1557 (\$10.N) - 09/09/13	2,667,851	9.75	10.75	331,113	4,795,787	98,347	1,011,617	1,209,874	1	200	2,942,905	106	119	623,938	1,431,261	87,188	8,313,548	245	317	861,842	1,037,710	82,548,911	3.17
9/21/2013	59,018,194	0	2,793,973	11.50	12.50	346,650	4,806,820	94,670	1,008,752	908,904	225	300	3,395,333	130	145	704,431	1,513,941	92,441	11,449,786	400	40	1,072,426	973,114	88,179,435	3.38
9/28/2013	57,927,984	1558 (\$2.N); 1523 (\$5.N) - 09/23/13	2,653,111	13.25	14	329,426	4,679,375	95,344	994,775	852,100	200	225	3,688,920	160	173	744,933	1,523,950	94,444	3,041,612	50	60	392,576	921,748	77,940,297	2.99
10/5/2013	62,146,816	0	2,758,867	15	15.75	341,320	5,022,201	105,398	1,038,159	842,921	200	200	2,878,147	189	12	615,856	1,694,849	108,583	3,263,494	70	86	416,767	956,996	82,190,373	3.15
10/12/2013	60,867,582	1560 (\$1.N); 1561 (\$5.N); 1562 (\$20.N) - 10/7/13	2,820,574	16.5	17.75	348,512	4,834,261	97,324	1,011,724	926,156	225	300	1,819,995	14	22	440,456	1,607,225	100,756	4,066,595	108	133	489,491	917,894	80,348,544	3.08
10/19/2013	60,612,193	0	2,709,127	18.5	19.5	339,742	4,805,913	93,251	998,546	1,120,862	425	575	1,852,326	29	37	442,957	1,595,838	97,700	4,606,577	156	186	533,660	883,112	80,691,803	3.10
10/26/2013	59,548,277	1563 (\$2.N); 1564 (\$5.N); 1571 (\$10.N) - 10/21/13	2,318,924	5	5.25	297,319	4,702,074	92,890	991,912	830,330	200	225	2,138,960	55	65	514,665	1,635,640	102,731	4,306,600	216	40	503,870	884,014	78,868,205	3.03
11/2/2013	61,710,236	0	2,370,679	5.5	5.75	307,933	4,842,493	96,454	1,006,508	1,034,914	300	425	2,200,241	75	87	518,514	1,660,955	106,051	2,890,169	50	60	385,390	888,676	80,019,212	3.07
11/9/2013	61,668,594	1572 (\$1.N); 1565 (\$2.N); 1524 (\$3.N); 1568 (\$5.N) - 11/4/13	2,396,719	6	6.25	311,322	4,959,973	98,589	1,019,624	1,380,347	550	750	2,599,262	99	115	596,031	1,673,137	105,122	3,109,692	70	87	407,994	897,258	81,223,664	3.12
11/16/2013	60,057,025	0	2,449,602	5	5.25	316,977	4,845,025	95,215	1,003,854	1,690,863	925	1,150	2,988,792	132	149	652,956	1,660,309	102,225	3,786,446	110	130	477,532	860,276	80,987,096	3.11
11/23/2013	63,118,266	1570 (\$5.N); 1534 (\$10.N) - 11/18/13	2,325,678	5.5	5.75	307,020	4,702,460	91,204	1,007,524	839,877	200	200	3,473,057	165	181	764,548	1,628,437	98,799	2,637,760	40	50	349,338	861,068	82,205,036	3.15
weekly change	5.1%		-5.1%				-2.9%	-4.2%	0.4%	-50.3%			16.2%			17.1%	-1.9%	-3.4%				-26.8%	0.1%		1.5%
	SALES		SALES			SALES	SALES	SALES	SALES	SALES			SALES			SALES	SALES	SALES	SALES			SALES	SALES	% of Sales	
Calendar Year to date	2,926,398,118		124,219,676			10,367,172	238,475,429	4,548,167	49,273,880	53,468,250			108,909,325			24,636,399	70,823,424	4,440,744	252,516,185			27,623,025	43,266,989	3,938,966,782	100.0%
Fiscal Year to date 2014	722,398,855		30,942,934			3,907,267	57,941,879	1,148,139	12,129,144	13,055,140			32,387,133			7,159,433	19,079,262	1,180,257	57,203,015			6,540,956	11,086,416	976,159,829	100.0%